

REVISIONS				
DR	REV	DESCRIPTION	DATE	APPROVAL
VL005	-	INITIAL DRAWING	1/14/2021	TLC
VL005	-	DRAWING UPDATE	5/25/21	TLC

NOTES

1. NON-IMPACT RESISTANT GLAZING OPTION - 1/25" MINIMUM DSB GLAZING MEETS UNIFORM STATIC DESIGN PRESSURES SHOWN ON THIS DRAWING. GLAZING SHALL HAVE A MAXIMUM HEIGHT OF 6.70' AND A MAXIMUM LENGTH OF 24.00'. GLAZING IS NOT IMPACT RESISTANT AND DOES NOT MEET THE REQUIREMENTS FOR WIND-BORNE DEBRIS REGIONS.

2. IMPACT RESISTANT GLAZING OPTION - IMPACT RESISTANT GLAZING SYSTEM MAY BE INSTALLED IN INTERMEDIATE SECTIONS (WITH OR WITHOUT DECORATIVE INSERTS). GLAZING SHALL BE 1/4" POLYCARBONATE. MAXIMUM GLAZING DIMENSIONS SHALL BE 11" x 17", FASTENED WITH A MINIMUM #8 X 1" SMS; 3X ALONG THE HORIZONTAL AND 2X ALONG THE VERTICAL.

3. MINIMUM OF 1" OVERLAP ON BOTH JAMBS REQUIRED TO MEET NEGATIVE DESIGN PRESSURES.

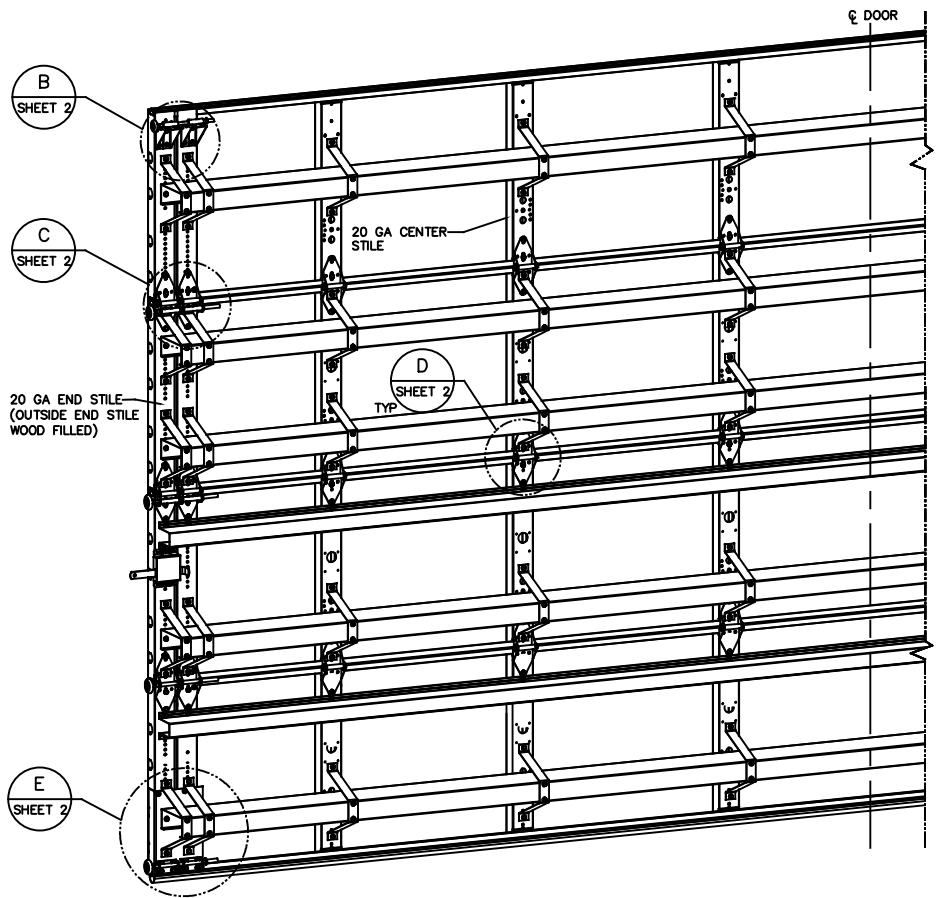
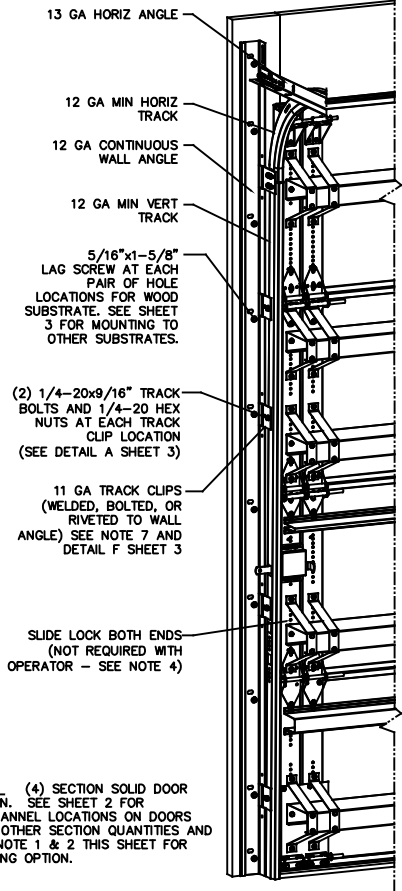
4. SLIDE LOCKS OR OPERATOR REQUIRED.

5. SECTION STEEL TO HAVE THE FOLLOWING MINIMUM THICKNESS:
 421, 423 - 20 GA
 427, 429 - 24 GA
 434, 436 - 25 GA

6. THE DESIGN OF THE SUPPORTING STRUCTURAL ELEMENTS SHALL BE THE RESPONSIBILITY OF THE PROFESSIONAL OF RECORD FOR THE BUILDING OR STRUCTURE AND IN ACCORDANCE WITH CURRENT BUILDING CODES FOR THE LOADS LISTED ON THIS DRAWING.

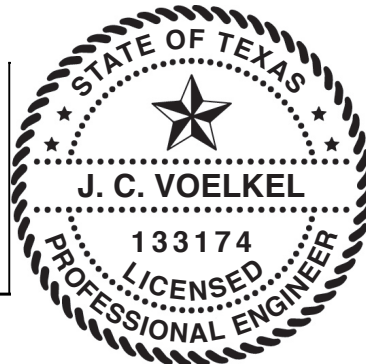
7. TRACK CLIPS SHALL BE LOCATED WITH CENTERLINE OF BOTTOM CLIP SPACED 10" MAX FROM BOTTOM OF TRACK AND REMAINING TRACK CLIPS SPACED AT 24" O.C. MAX. SPACING BETWEEN TOP TRACK CLIP AND SPLICE PLATE SHALL BE 30" O.C. MAX.

8. WHEN MOUNTING TO WOOD, DOOR JAMB TO BE MINIMUM 2x6 STRUCTURAL GRADE LUMBER. REFER TO JAMB CONNECTION SUPPLEMENT FOR ATTACHMENT TO SUPPORTING STRUCTURE.



NOTE: (4) SECTION SOLID DOOR SHOWN. SEE SHEET 2 FOR C-CHANNEL LOCATIONS ON DOORS WITH OTHER SECTION QUANTITIES AND SEE NOTE 1 & 2 THIS SHEET FOR GLAZING OPTION.

SUPERIMPOSED DESIGN PRESSURE LOADS ON SUPPORTING STRUCTURE		
MAX DOOR WIDTH	DOOR HEIGHT	MAX UNIFORM LOAD EACH JAMB (PLF)
24'-2"	ALL	+381.8/-427.8

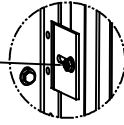


THE DOORS ARE DESIGNED AND MANUFACTURED TO COMPLY WITH THE 2018 IRC AND THE 2018 IBC.

STATIC PRESSURE RATINGS	APPROVED SIZES
DESIGN PRESSURE(PSF): +31.6/-35.4	MAX WIDTH: 24'-2"
	MAX HEIGHT: 24'-1"
IMPACT/CYCLIC RATED: YES	MAX SECTION HEIGHT: 24'

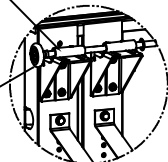
THE DRAWINGS AND ALL OTHER INFORMATION CONTAINED HEREIN ARE THE CONFIDENTIAL AND PROPRIETARY PROPERTY OF OVERHEAD DOOR CORPORATION AND ITS AFFILIATED COMPANIES. THIS DRAWING AND INFORMATION, IN WHOLE OR IN PART, MAY NOT BE COPIED IN ANY MANNER OR DISCLOSED TO ANYONE WITHOUT THE PRIOR WRITTEN CONSENT OF OVERHEAD DOOR CORPORATION. NO DISCLOSURE OF ANY OF THIS DRAWING OR INFORMATION IS INTENDED TO OPERATE AS A LICENSE OR AUTHORIZATION TO USE IT FOR ANY PURPOSE WITHOUT THE SPECIFIC WRITTEN CONSENT OF OVERHEAD DOOR CORPORATION.			
REF DIVG USED ON	TITLE UNDER 251 +.004/-003 251 TO 500 +.006/-003 OVER 500 +.008/-003 FRACTIONS ± 1/16	WHOLE NUMBERS: ± .25 .X ± .1 .XX ± .03 .XXX ± .010 ANGLES: ± .5°	FINISH N/A UNIT OF MEASURE EA
MATERIAL N/A		The Genuine. The Original. LEVELVILLE, TENNESSEE DRAWN BY: T CLARK CHECKED BY: J QIAN APPROVED BY: T CLARK DATE: 1/14/21 1/21/21 5/25/21	
DRAWING TITLE: WINDLOAD OPTION CODE 2052 SERIES 421/423/427/429/434/436, 316/-35.4 PSF, 24'-2" MAX		DRAWING NUMBER: D- 411803 SCALE: N/A SHEET 1 OF 3	

1/4-20x9/16" TRACK BOLT AND 1/4-20 HEX NUT THROUGH THE SLOT IN THE TRACK AND TRACK CLIP



DETAIL A

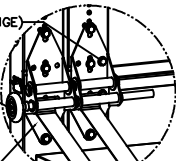
12 GA COMMERCIAL TOP FRAME BRACKETS WITH 13 GA ROLLER CARRIERS, EACH ATTACHED WITH (4) 1/4-14x7/8" SELF DRILLING CRIMPITTE SCREWS



DETAIL B

3" STEEL ROLLER WITH 7/16" DIA. x 9" LONG STEM AND 7/16" PUSH NUT AT TOP ROLLER LOCATION. 1/4" MAX BETWEEN PUSH NUT AND BRACKET.

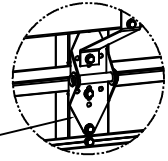
ADD (2) 1/4-14x7/8" SELF DRILLING CRIMPITTE SCREWS (INSIDE OF EACH INSIDE END HINGE)



DETAIL C

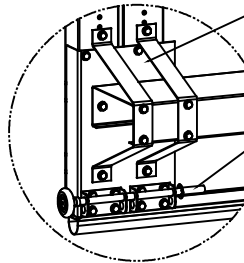
3" STEEL ROLLER WITH 9/16" DIA. x 9" LONG STEM AT ALL ROLLER LOCATIONS EXCEPT TOP AND BOTTOM ROLLERS

11 GA MODIFIED WIDE BODY END HINGE ATTACHED WITH (4) 1/4-14x7/8" SELF DRILLING CRIMPITTE SCREWS



DETAIL D

14 GA WIDE BODY INTERMEDIATE HINGE ATTACHED WITH (4) 1/4-14x7/8" SELF DRILLING CRIMPITTE SCREWS



DETAIL E

11 GA DOUBLE BOTTOM BRACKET ATTACHED WITH (14) 1/4-14x7/8" SELF DRILLING CRIMPITTE SCREWS (4 OF WHICH ARE USED IN ATTACHMENT OF CHANNEL AND STRAPS AND 8 OF WHICH ARE USED TO ATTACH 12 GA ROLLER CARRIERS)

3" STEEL ROLLER WITH 7/16" DIA. x 9" LONG STEM AND 7/16" PUSH NUT. 1/4" MAX BETWEEN PUSH NUT AND BRACKET.

ATTACH U-BARS WITH (2) 1/4-14x7/8" SELF DRILLING CRIMPITTE SCREWS AT ALL STILE LOCATIONS, TYP.

ATTACH EACH 6" STRAP WITH (4) 1/4-14x7/8" SELF DRILLING CRIMPITTE SCREWS AT EACH STILE LOCATION AS SHOWN

ATTACH EACH 6" C-CHANNEL WITH (1) 1/4-14x7/8" SELF DRILLING CRIMPITTE SCREW AT EACH STILE LOCATION AS SHOWN

(12) SECTION DOORS WITH (15) 6" 16 GA 50 KSI C-CHANNELS AND (6) 4" 16 GA 80 KSI U-BARS LOCATED AS SHOWN

(11) SECTION DOORS WITH (13) 6" 16 GA 50 KSI C-CHANNELS AND (7) 4" 16 GA 80 KSI U-BARS LOCATED AS SHOWN

(10) SECTION DOORS WITH (12) 6" 16 GA 50 KSI C-CHANNELS AND (6) 4" 16 GA 80 KSI U-BARS LOCATED AS SHOWN

(9) SECTION DOORS WITH (11) 6" 16 GA 50 KSI C-CHANNELS AND (5) 4" 16 GA 80 KSI U-BARS LOCATED AS SHOWN

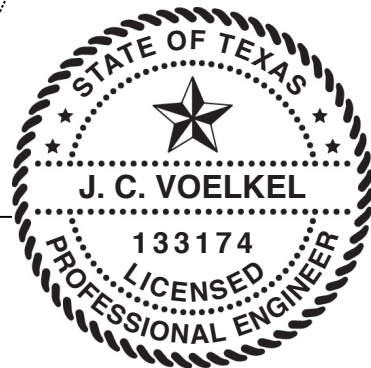
(8) SECTION DOORS WITH (10) 6" 16 GA 50 KSI C-CHANNELS AND (4) 4" 16 GA 80 KSI U-BARS LOCATED AS SHOWN

(7) SECTION DOORS WITH (8) 6" 16 GA 50 KSI C-CHANNELS AND (5) 4" 16 GA 80 KSI U-BARS LOCATED AS SHOWN

(6) SECTION DOORS WITH (7) 6" 16 GA 50 KSI C-CHANNELS AND (4) 4" 16 GA 80 KSI U-BARS LOCATED AS SHOWN

(5) SECTION DOORS WITH (6) 6" 16 GA 50 KSI C-CHANNELS AND (3) 4" 16 GA 80 KSI U-BARS LOCATED AS SHOWN

(4) SECTION DOORS WITH (5) 6" 16 GA 50 KSI C-CHANNELS AND (2) 4" 16 GA 80 KSI U-BARS LOCATED AS SHOWN



J. CHRISTIAN VOELKEL, PE
312 N. NEW VARRINGTON ROAD, UNIT 1A
PENSACOLA, FL
FL PE 88229
TX PE 133174

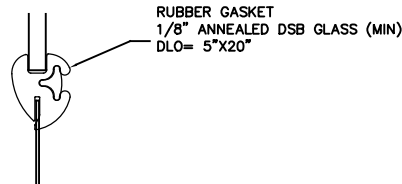
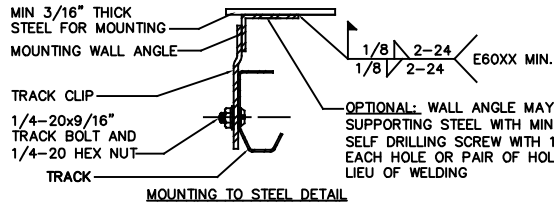
STATIC PRESSURE RATINGS	APPROVED SIZES
DESIGN PRESSURE(PSF): +31.6/-35.4	MAX WIDTH: 24'-2"
	MAX HEIGHT: 24'-1"
IMPACT/CYCLIC RATED: YES	MAX SECTION HEIGHT: 24'

TOLERANCES UNLESS OTHERWISE SPECIFIED		FINISH	MATERIAL	
HOLE DIAMETER	WHOLE NUMBERS: ± .25	N/A	STEEL	LEVELVILLE, TENNESSEE
UNDER .251 +.004/- .003	X ± .1			
.251 TO .500 +.006/- .003	XX ± .03			
OVER .500 +.008/- .003	XXX ± .010			
FRACTIONS	ANGLES: ± .5°	EA	N/A	
± 1/16				

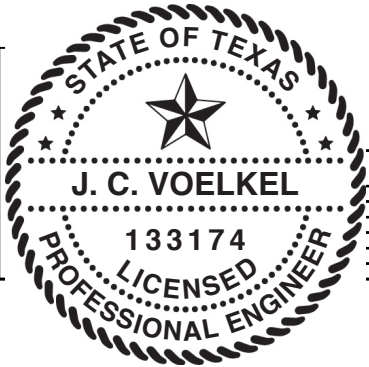
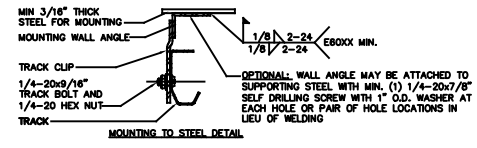
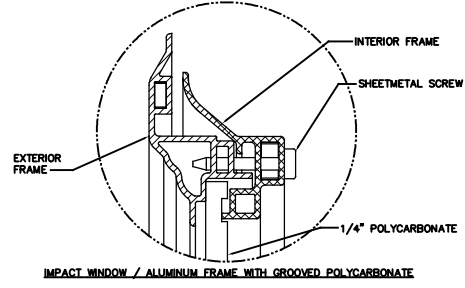
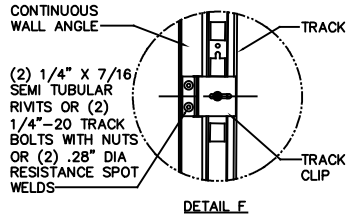
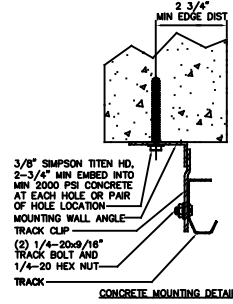
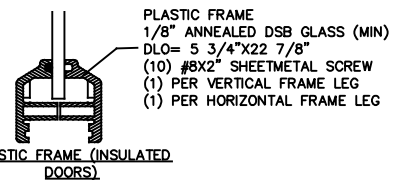
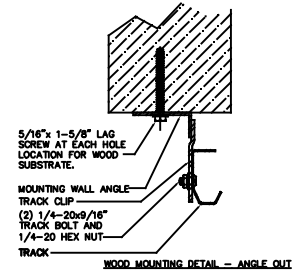
THE DRAWINGS AND ALL OTHER INFORMATION CONTAINED HEREIN ARE THE CONFIDENTIAL AND PROPRIETARY PROPERTY OF OVERHEAD DOOR CORPORATION AND ITS AFFILIATED COMPANIES. THIS DRAWING AND INFORMATION, IN WHOLE OR IN PART, MAY NOT BE COPIED IN ANY MANNER OR DISCLOSED TO ANYONE WITHOUT THE PRIOR WRITTEN CONSENT OF OVERHEAD DOOR CORPORATION. NO DISCLOSURE OF ANY OF THIS DRAWING OR INFORMATION IS INTENDED TO OPERATE AS A LICENSE OR AUTHORIZATION TO USE IT FOR ANY PURPOSE WITHOUT THE SPECIFIC WRITTEN CONSENT OF OVERHEAD DOOR CORPORATION.

REF DWG	USED ON	DATE	BY	DATE	REVISION
			T CLARK	1/14/21	
			J QIAN	1/21/21	
			T CLARK	5/25/21	

DRAWING TITLE	DRAWING NUMBER
WINDLOAD OPTION CODE 2052	D-411803
SERIES 421/423/427/429/434/436, 316/-35.4 PSF, 24'-2" MAX	
SCALE: N/A	SHEET 2 OF 3



RUBBER FRAME GASKET (NON-INSULATED DOORS)



STATIC PRESSURE RATINGS	APPROVED SIZES
DESIGN PRESSURE(PSF): +31.6/-35.4	MAX WIDTH: 24'-2"
IMPACT/CYCLIC RATED: YES	MAX HEIGHT: 24'-1"
	MAX SECTION HEIGHT: 24'

THE DRAWINGS AND ALL OTHER INFORMATION CONTAINED HEREIN ARE THE CONFIDENTIAL AND PROPRIETARY PROPERTY OF OVERHEAD DOOR CORPORATION AND ITS AFFILIATED COMPANIES. THIS DRAWING AND INFORMATION, IN WHOLE OR IN PART, MAY NOT BE COPIED IN ANY MANNER OR DISCLOSED TO ANYONE WITHOUT THE PRIOR WRITTEN CONSENT OF OVERHEAD DOOR CORPORATION. NO DISCLOSURE OF ANY OF THIS DRAWING OR INFORMATION IS INTENDED TO OPERATE AS A LICENSE OR AUTHORIZATION TO USE IT FOR ANY PURPOSE WITHOUT THE SPECIFIC WRITTEN CONSENT OF OVERHEAD DOOR CORPORATION.										
REF DWG	USED ON	HOLE DIAMETER			FINISH	MATERIAL	LEVEILLE, TEXAS	DATE	DRAWN BY	DATE
		UNDER .251 +.004/- .003	WHOLE NUMBERS:	± .25						
		.251 TO .500 +.006/- .003	.X	± .1					T CLARK	1/14/21
		OVER .500 +.008/- .003	.XX	± .03					CHECKED BY	
		FRACTIONS	.XXX	± .010	UNIT OF MEASURE				J QIAN	1/21/21
		± 1/16	ANGLES:	± .5°	EA				APPROVED BY	5/25/21
									T CLARK	

DRAWING TITLE	WINDLOAD OPTION CODE 2052
SERIES	421/423/427/429/434/436, 316/-33.4 PSF, 24'-2" MAX
DRAWING NUMBER	D- 411803
SCALE	N/A
SHEET	3 OF 3