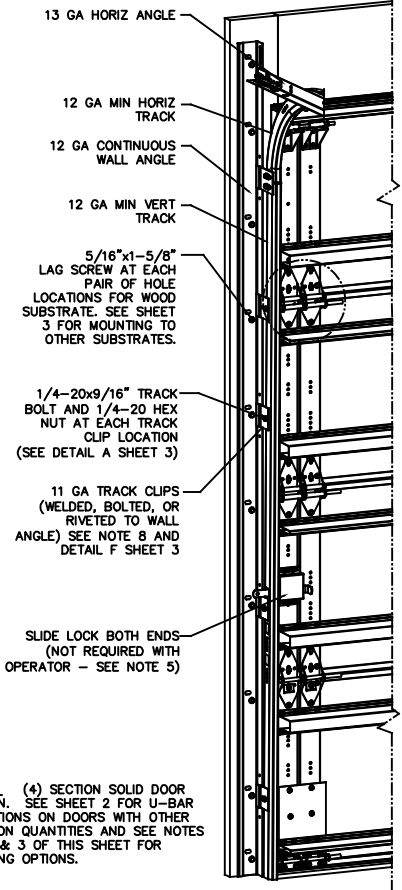


NOTES

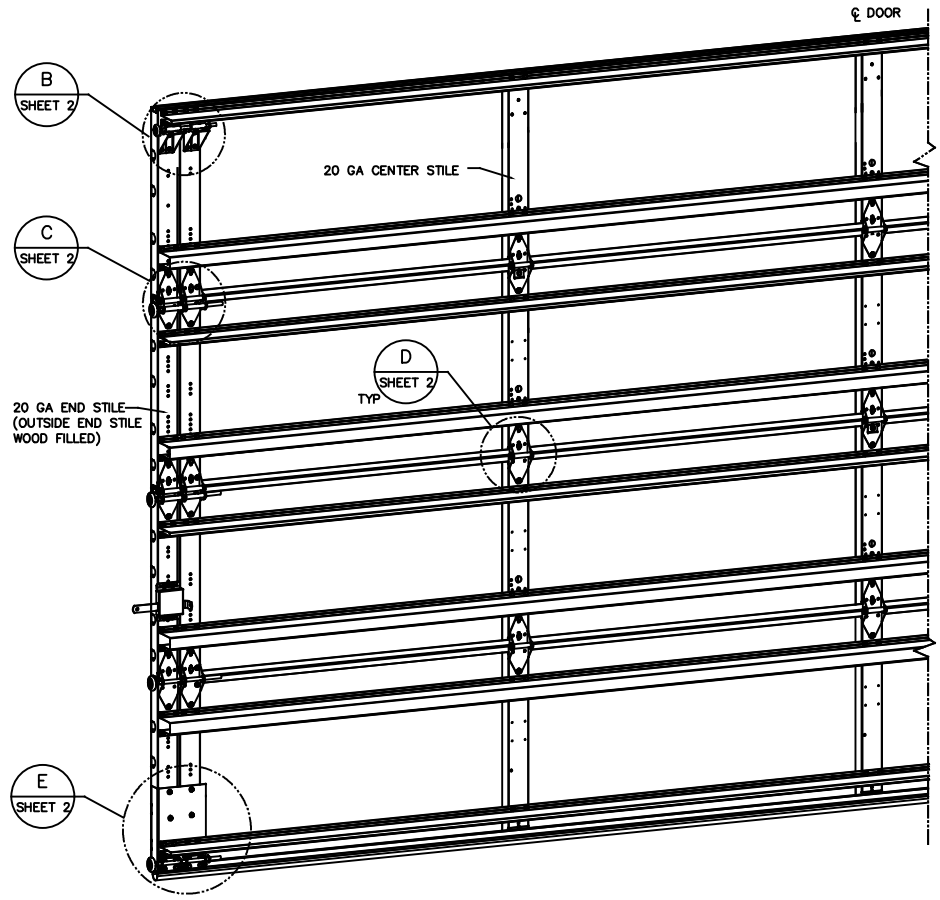
- NON-IMPACT RESISTANT OPTION - .125" MINIMUM DSB GLAZING MEETS UNIFORM STATIC DESIGN PRESSURES SHOWN ON THIS DRAWING. GLAZING SHALL HAVE A MAXIMUM HEIGHT OF 6'-7" AND A MAXIMUM LENGTH OF 24'-0". GLAZING IS NOT IMPACT RESISTANT AND DOES NOT MEET THE REQUIREMENTS FOR WIND-BORNE DEBRIS REGIONS.
- IMPACT RESISTANT GLAZING OPTION - IMPACT RESISTANT GLAZING SYSTEM MAY BE INSTALLED IN INTERMEDIATE SECTIONS (WITH OR WITHOUT DECORATIVE INSERTS). GLAZING SHALL BE 1/4" POLYCARBONATE. MAXIMUM GLAZING DIMENSIONS SHALL BE 11" x 17", FASTENED WITH A MINIMUM #8 x 1" SMS: 3X ALONG THE HORIZONTAL AND 2X ALONG THE VERTICAL.
- ALUMINUM FULL VIEW OPTION - ALUMINUM FULL VIEW SECTION MAY REPLACE ANY SECTION EXCEPT TOP AND BOTTOM PANELS. ALUMINUM FULL VIEW SECTION SHALL HAVE RAILS AND STILES OF EXTRUDED ALUMINUM ALLOY 6063-T6 AND .125" MINIMUM DSB GLAZING INSTALLED WITH ALUMINUM RETAINERS IN ORDER TO MEET UNIFORM STATIC DESIGN PRESSURES SHOWN ON THIS DRAWING. AFV PANEL SIZE IS 47.5"x21.9" (MAX) GLAZING IS NOT IMPACT RESISTANT AND DOES NOT MEET THE REQUIREMENTS FOR WIND-BORNE DEBRIS REGIONS.
- MINIMUM OF 1" OVERLAP ON BOTH JAMBS REQUIRED TO MEET NEGATIVE DESIGN PRESSURES.
- SLIDE LOCK OR OPERATOR REQUIRED.
- SECTION STEEL TO HAVE THE FOLLOWING MINIMUM THICKNESS:
421, 423 - 20 GA
427, 429 - 24 GA
434, 436 - 25 GA
- THE DESIGN OF THE SUPPORTING STRUCTURAL ELEMENTS SHALL BE THE RESPONSIBILITY OF THE PROFESSIONAL OF RECORD FOR THE BUILDING OR STRUCTURE AND IN ACCORDANCE WITH CURRENT BUILDING CODES FOR THE LOADS LISTED ON THIS DRAWING.
- TRACK CLIPS SHALL BE LOCATED WITH CENTERLINE OF BOTTOM CLIP SPACED 10" MAX FROM BOTTOM OF TRACK AND REMAINING TRACK CLIPS SPACED AT 24" O.C. MAX. SPACING BETWEEN TOP TRACK CLIP AND SPLICE PLATE SHALL BE 30" O.C. MAX.
- WHEN MOUNTING TO WOOD, DOOR JAMB TO BE MINIMUM 2x6 STRUCTURAL GRADE LUMBER. REFER TO JAMB CONNECTION SUPPLEMENT FOR ATTACHMENT TO SUPPORTING STRUCTURE.



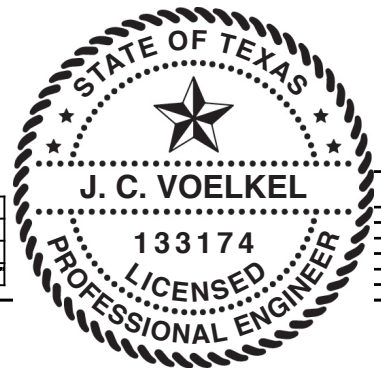
NOTE: (4) SECTION SOLID DOOR SHOWN. SEE SHEET 2 FOR U-BAR LOCATIONS ON DOORS WITH OTHER SECTION QUANTITIES AND SEE NOTES 1, 2, & 3 OF THIS SHEET FOR GLAZING OPTIONS.

SUPERIMPOSED DESIGN PRESSURE LOADS ON SUPPORTING STRUCTURE		
MAX DOOR WIDTH	DOOR HEIGHT	MAX UNIFORM LOAD EACH JAMB (PLF)
16'-2"	ALL	+355.7/-402.6

REVISIONS				
OR	REV	DESCRIPTION	DATE	APPROVAL
WL005	-	INITIAL DRAWING	1/14/2021	TLC
WL005	A	ADDED AFV PANEL SIZE	4/27/21	TLC



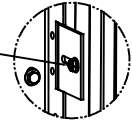
THE DOORS ARE DESIGNED AND MANUFACTURED TO COMPLY WITH THE 2018 IRC AND THE 2018 IBC.



STATIC PRESSURE RATINGS		APPROVED SIZES	
DESIGN PRESSURE (PSF):	+44.0/-49.8	MAX WIDTH:	16'-2"
		MAX HEIGHT:	24'-1"
IMPACT/CYCLIC RATED:	YES	MAX SECTION HEIGHT:	24'

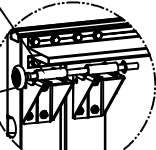
THE DRAWINGS AND ALL OTHER INFORMATION CONTAINED HEREIN ARE THE CONFIDENTIAL AND PROPRIETARY PROPERTY OF OVERHEAD DOOR CORPORATION AND ITS AFFILIATED COMPANIES. THIS DRAWING AND INFORMATION, IN WHOLE OR IN PART, MAY NOT BE COPIED IN ANY MANNER OR DISCLOSED TO ANYONE WITHOUT THE PRIOR WRITTEN CONSENT OF OVERHEAD DOOR CORPORATION. NO DISCLOSURE OF ANY OF THIS DRAWING OR INFORMATION IS INTENDED TO OPERATE AS A LICENSE OR AUTHORIZATION TO USE IT FOR ANY PURPOSE WITHOUT THE SPECIFIC WRITTEN CONSENT OF OVERHEAD DOOR CORPORATION.																																															
REF DWG	USED ON	<table border="1"> <tr> <th colspan="2">TOLERANCES UNLESS OTHERWISE SPECIFIED</th> </tr> <tr> <td>DIM. DIAMETER</td> <td>FRACTIONS</td> </tr> <tr> <td>UNDER .251 +.004/- .003</td> <td>± .25</td> </tr> <tr> <td>.251 TO .500 +.006/- .003</td> <td>± .1</td> </tr> <tr> <td>OVER .500 +.008/- .003</td> <td>± .03</td> </tr> <tr> <td></td> <td>± .010</td> </tr> <tr> <td></td> <td>± .5°</td> </tr> </table>	TOLERANCES UNLESS OTHERWISE SPECIFIED		DIM. DIAMETER	FRACTIONS	UNDER .251 +.004/- .003	± .25	.251 TO .500 +.006/- .003	± .1	OVER .500 +.008/- .003	± .03		± .010		± .5°	FINISH	N/A		<table border="1"> <tr> <th colspan="2">LEWISVILLE, TEXAS</th> </tr> <tr> <td>DRAWN BY:</td> <td>T CLARK</td> </tr> <tr> <td>CHECKED BY:</td> <td>J QIAN</td> </tr> <tr> <td>APPROVED BY:</td> <td>T CLARK</td> </tr> </table>	LEWISVILLE, TEXAS		DRAWN BY:	T CLARK	CHECKED BY:	J QIAN	APPROVED BY:	T CLARK	DATE	1/14/21	<table border="1"> <tr> <th colspan="2">DRAWING TITLE</th> </tr> <tr> <td>WIND LOAD OPTION CODE</td> <td>2047</td> </tr> <tr> <td>SERIES</td> <td>421/423/427/429/434/436</td> </tr> <tr> <td>MAX HEIGHT</td> <td>44.0/-49.8 PSF, 16'-2" MAX</td> </tr> <tr> <th colspan="2">DRAWING NUMBER</th> </tr> <tr> <td>D-</td> <td>411801</td> </tr> <tr> <td>SCALE:</td> <td>N/A</td> </tr> <tr> <td>SHEET 1 OF 3</td> <td></td> </tr> </table>	DRAWING TITLE		WIND LOAD OPTION CODE	2047	SERIES	421/423/427/429/434/436	MAX HEIGHT	44.0/-49.8 PSF, 16'-2" MAX	DRAWING NUMBER		D-	411801	SCALE:	N/A	SHEET 1 OF 3	
TOLERANCES UNLESS OTHERWISE SPECIFIED																																															
DIM. DIAMETER	FRACTIONS																																														
UNDER .251 +.004/- .003	± .25																																														
.251 TO .500 +.006/- .003	± .1																																														
OVER .500 +.008/- .003	± .03																																														
	± .010																																														
	± .5°																																														
LEWISVILLE, TEXAS																																															
DRAWN BY:	T CLARK																																														
CHECKED BY:	J QIAN																																														
APPROVED BY:	T CLARK																																														
DRAWING TITLE																																															
WIND LOAD OPTION CODE	2047																																														
SERIES	421/423/427/429/434/436																																														
MAX HEIGHT	44.0/-49.8 PSF, 16'-2" MAX																																														
DRAWING NUMBER																																															
D-	411801																																														
SCALE:	N/A																																														
SHEET 1 OF 3																																															

1/4-20x9/16" TRACK BOLT AND 1/4-20 HEX NUT THROUGH THE SLOT IN THE TRACK AND TRACK CLIP



DETAIL A

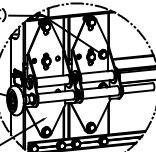
12 GA COMMERCIAL TOP FRAME BRACKETS WITH 13 GA ROLLER CARRIERS, EACH ATTACHED WITH (4) 1/4-14x7/8" SELF DRILLING CRIMPITTE SCREWS



DETAIL B

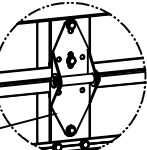
3" STEEL ROLLER WITH 7/16" DIA. x 9" LONG STEM AND 7/16" PUSH NUT AT TOP ROLLER LOCATION. 1/4" MAX BETWEEN PUSH NUT AND BRACKET.

ADD (2) 1/4-14x7/8" SELF DRILLING CRIMPITTE SCREWS (INSIDE OF EACH INSIDE END HINGE)



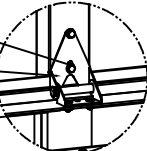
DETAIL C

11 GA MODIFIED WIDE BODY END HINGE ATTACHED WITH (4) 1/4-14x7/8" SELF DRILLING CRIMPITTE SCREWS



SOLID SECTION

14 GA WIDE BODY INTERMEDIATE HINGE ATTACHED WITH (4) 1/4-14x7/8" SELF DRILLING CRIMPITTE SCREWS

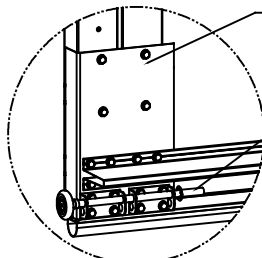


AEV SECTION
DETAIL D

(2) 1/4-14x7/8" SELF DRILLING CRIMPITTE SCREWS

HALF HINGE

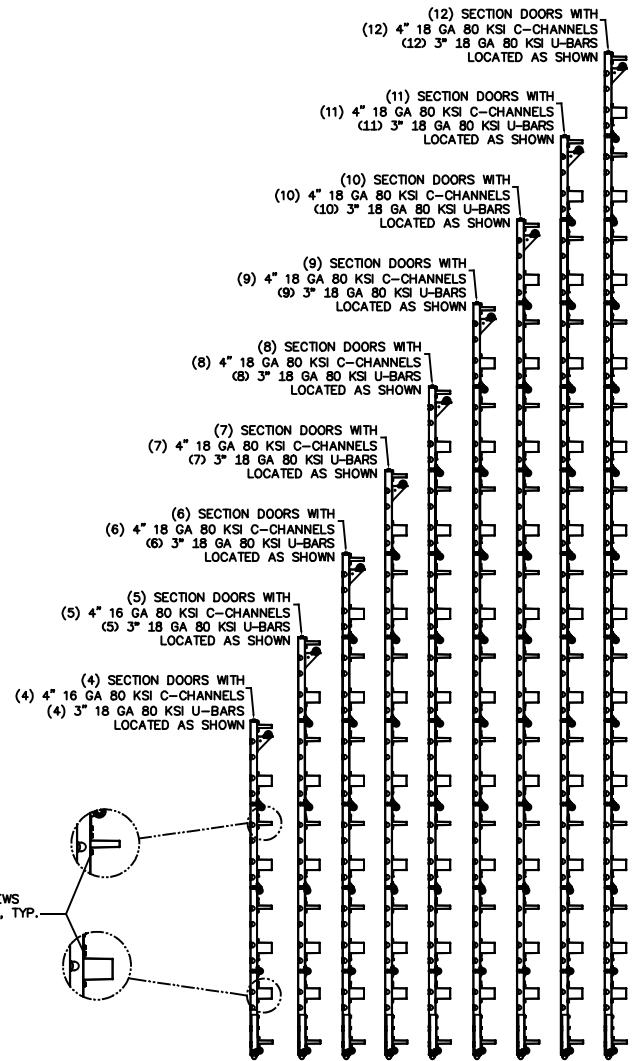
(2) 1/4 x 1/2" CARRIAGE BOLTS AND 1/4" FLANGE NUTS



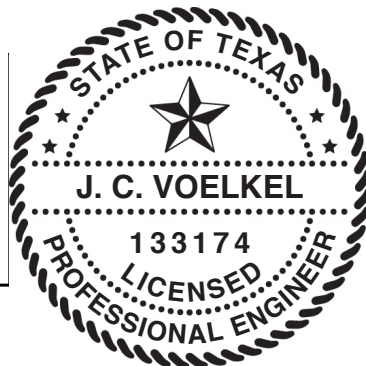
DETAIL E

11 GA DOUBLE BOTTOM BRACKET ATTACHED WITH (20) 1/4-14x7/8" SELF DRILLING CRIMPITTE SCREWS (8 OF WHICH ARE USED IN ATTACHMENT OF STRUT AND 8 OF WHICH ARE USED TO ATTACH 12 GA ROLLER CARRIERS)

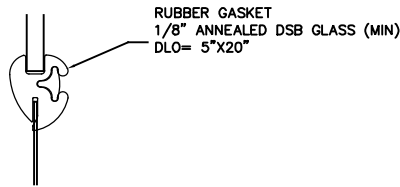
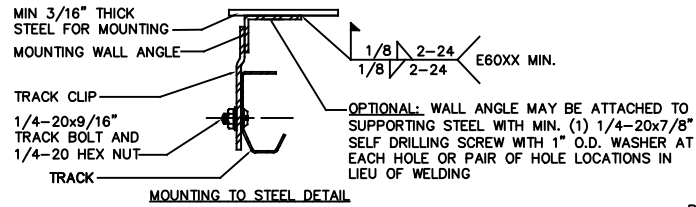
3" 1144 STEEL ROLLER WITH 7/16" DIA. x 9" LONG STEM AND 7/16" PUSH NUT. 1/4" MAX BETWEEN PUSH NUT AND BRACKET.



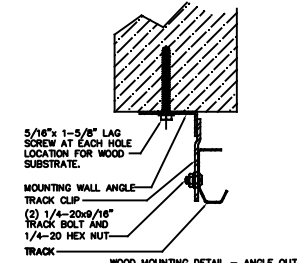
STATIC PRESSURE RATINGS	APPROVED SIZES
DESIGN PRESSURE(PSF): +44.0/-49.8	MAX WIDTH: 16'-2"
	MAX HEIGHT: 24'-1"
IMPACT/CYCLIC RATED: YES	MAX SECTION HEIGHT: 24'



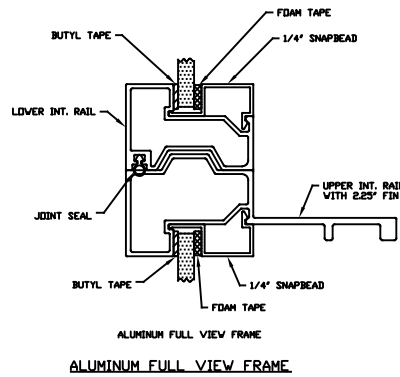
THE DRAWINGS AND ALL OTHER INFORMATION CONTAINED HEREIN ARE THE CONFIDENTIAL AND PROPRIETARY PROPERTY OF OVERHEAD DOOR CORPORATION AND ITS AFFILIATED COMPANIES. THIS DRAWING AND INFORMATION, IN WHOLE OR IN PART, MAY NOT BE COPIED IN ANY MANNER OR DISCLOSED TO ANYONE WITHOUT THE PRIOR WRITTEN CONSENT OF OVERHEAD DOOR CORPORATION. NO DISCLOSURE OF ANY OF THIS DRAWING OR INFORMATION IS INTENDED TO OPERATE AS A LICENSE OR AUTHORIZATION TO USE IT FOR ANY PURPOSE WITHOUT THE SPECIFIC WRITTEN CONSENT OF OVERHEAD DOOR CORPORATION.			
 TOLERANCES UNLESS OTHERWISE SPECIFIED FRACTIONS ± 1/16 DECIMALS ± .005 ANGLES ± .5°	HOLE DIAMETER UNDER .251 +.004/-0.003 .251 TO .500 +.006/-0.003 OVER .500 +.008/-0.003	FINISH N/A	DATE 1/14/21
	WHOLE NUMBERS ± .25 .X ± .1 .XX ± .03 .XXX ± .010 ANGLES ± .5°	UNIT OF MEASURE EA	MATERIAL N/A
REF DWG USED ON	THE GENUINE, THE ORIGINAL LEVYVILLE, TENNESSEE OVERHEAD DOOR CORPORATION MADE IN U.S. CUSTOMARY UNITS	CHECKED BY J QIAN APPROVED BY T CLARK	DATE 1/8/21 4/27/21 DRAWING NUMBER D- 411801 SCALE N/A SHEET 2 OF 3



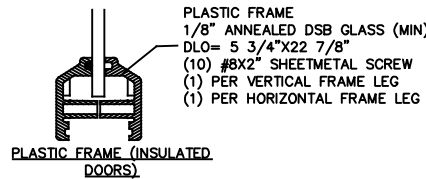
RUBBER FRAME GASKET
(NON-INSULATED DOORS)



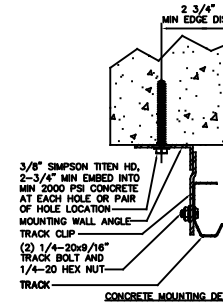
WOOD MOUNTING DETAIL - ANGLE OUT



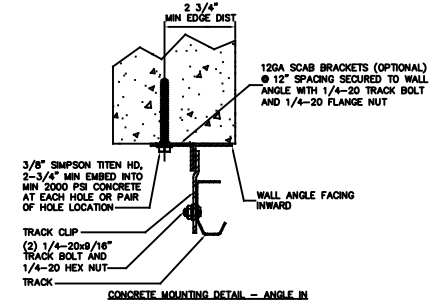
ALUMINUM FULL VIEW FRAME



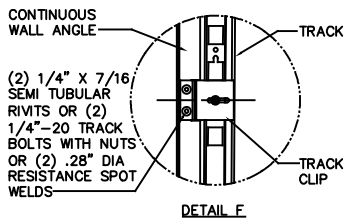
PLASTIC FRAME (INSULATED DOORS)



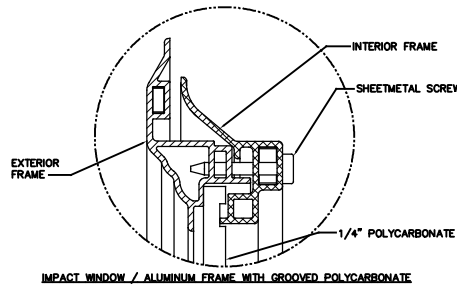
CONCRETE MOUNTING DETAIL - ANGLE OUT



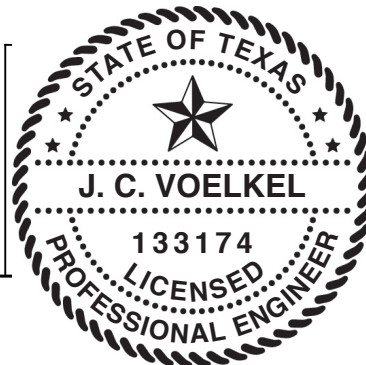
CONCRETE MOUNTING DETAIL - ANGLE IN



DETAIL F



IMPACT WINDOW / ALUMINUM FRAME WITH GROOVED POLYCARBONATE



STATIC PRESSURE RATINGS	APPROVED SIZES
DESIGN PRESSURE(PSF): +44.0/-49.8	MAX WIDTH: 16'-2"
	MAX HEIGHT: 24'-1"
IMPACT/CYCLIC RATED: YES	MAX SECTION HEIGHT: 24'

TOLERANCES UNLESS OTHERWISE SPECIFIED		FINISH	DATE
HOLE DIAMETER	WHOLE NUMBERS: ± .25	N/A	1/14/21
UNDER .251 +.004/-003	FRACTIONS: ± .1		
.251 TO .500 +.006/-003	ANGLES: ± .5°		
OVER .500 +.008/-003			
REF DWG	USED ON	UNIT OF MEASURE	
		EA	

DATE	BY	REVISION
1/14/21	T. CLARK	ISSUED FOR PERMIT
1/8/21	J. QIAN	CHECKED
4/27/21	T. CLARK	APPROVED

DRAWING TITLE	SHEET NO.
WINDLOAD OPTION CODE 2047 SERIES 421/423/427/429/434/436, 44.0/-49.8 PSF, 16'-2" MAX	3 OF 3
DRAWING NUMBER	
D-411801	
SCALE	N/A