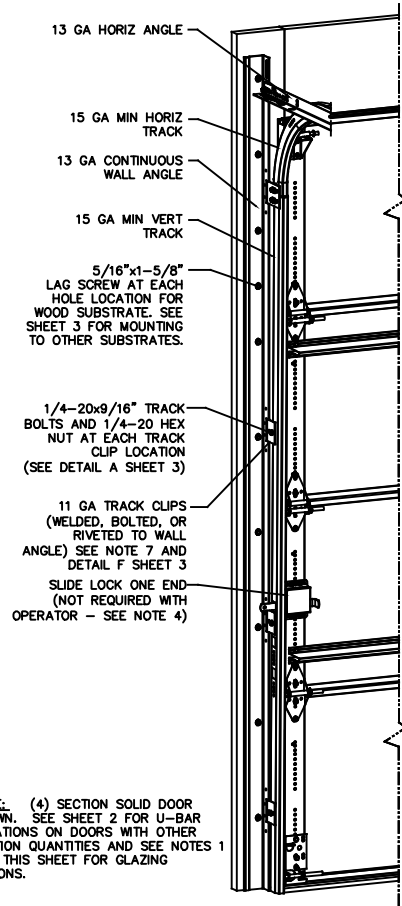


NOTES

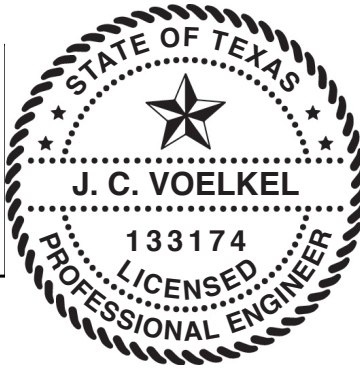
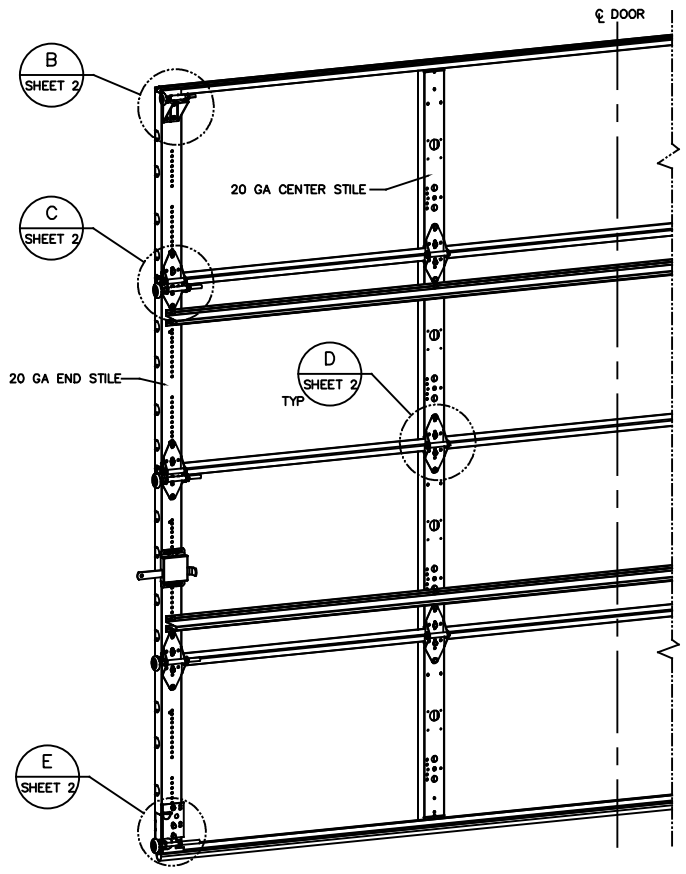
- STANDARD GLAZING OPTION - .125" MINIMUM DSB GLAZING MEETS UNIFORM STATIC DESIGN PRESSURES SHOWN ON THIS DRAWING. GLAZING SHALL HAVE A MAXIMUM HEIGHT OF 6.70' AND A MAXIMUM LENGTH OF 24.00'. GLAZING IS NOT IMPACT RESISTANT AND DOES NOT MEET THE REQUIREMENTS FOR WIND-BORNE DEBRIS REGIONS.
- ALUMINUM FULL VIEW OPTION - ALUMINUM FULL VIEW SECTION MAY REPLACE ANY FULL VIEW SECTION EXCEPT TOP AND BOTTOM PANELS. ALUMINUM FULL VIEW SECTION SHALL HAVE RAILS AND STILES OF EXTRUDED ALUMINUM ALLOY 6063-T6 WITH A 2-1/4" INTEGRAL FIN AND .125" MINIMUM DSB ANNEALED GLAZING INSTALLED WITH ALUMINUM RETAINERS IN ORDER TO MEET UNIFORM STATIC DESIGN PRESSURES SHOWN ON THIS DRAWING. AFV PANEL SIZE IS 46.5"x21.9" (MAX). GLAZING IS NOT IMPACT RESISTANT AND DOES NOT MEET THE REQUIREMENTS FOR WIND-BORNE DEBRIS REGIONS.
- MINIMUM OF 1" OVERLAP ON BOTH JAMBS REQUIRED TO MEET NEGATIVE DESIGN PRESSURES.
- SLIDE LOCK OR OPERATOR REQUIRED.
- SECTION STEEL TO HAVE THE FOLLOWING MINIMUM THICKNESS:
421, 423 - 20 GA
427, 429 - 24 GA
434, 436 - 25 GA
- THE DESIGN OF THE SUPPORTING STRUCTURAL ELEMENTS SHALL BE THE RESPONSIBILITY OF THE PROFESSIONAL OF RECORD FOR THE BUILDING OR STRUCTURE AND IN ACCORDANCE WITH CURRENT BUILDING CODES FOR THE LOADS LISTED ON THIS DRAWING.
- TRACK CLIPS SHALL BE LOCATED WITH CENTERLINE OF BOTTOM CLIP SPACED 10" MAX FROM BOTTOM OF TRACK AND REMAINING TRACK CLIPS SPACED AT 24" O.C. MAX. SPACING BETWEEN TOP TRACK CLIP AND SPLICE PLATE SHALL BE 30" O.C. MAX.
- WHEN MOUNTING TO WOOD, DOOR JAMB TO BE MINIMUM 2x6 STRUCTURAL GRADE LUMBER. REFER TO JAMB CONNECTION SUPPLEMENT FOR ATTACHMENT TO SUPPORTING STRUCTURE.



NOTE: (4) SECTION SOLID DOOR SHOWN. SEE SHEET 2 FOR U-BAR LOCATIONS ON DOORS WITH OTHER SECTION QUANTITIES AND SEE NOTES 1 & 2 THIS SHEET FOR GLAZING OPTIONS.

MAX DOOR WIDTH	DOOR HEIGHT	MAX UNIFORM LOAD EACH JAMB (PLF)
12'-2"	ALL	+69.4/-77.3

REVISIONS				
CR	REV	DESCRIPTION	DATE	APPROVAL
VL005	-	INITIAL DRAWING	1/13/2021	TLC
VL005	A	ADDED AFV PANEL SIZE	4/27/21	TLC



STATIC PRESSURE RATINGS	APPROVED SIZES
DESIGN PRESSURE(PSF): +11.4/-12.7	MAX WIDTH: 12'-2"
IMPACT/CYCLIC RATED: NO	MAX HEIGHT: 24'-1"
	MAX SECTION HEIGHT: 24'

THE DOORS ARE DESIGNED AND MANUFACTURED TO COMPLY WITH THE 2018 IRC AND THE 2018 IBC.

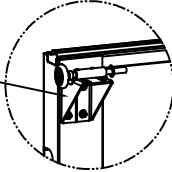
THE DRAWINGS AND ALL OTHER INFORMATION CONTAINED HEREIN ARE THE CONFIDENTIAL AND PROPRIETARY PROPERTY OF OVERHEAD DOOR CORPORATION AND ITS AFFILIATED COMPANIES. THIS DRAWING AND INFORMATION, IN WHOLE OR IN PART, MAY NOT BE COPIED IN ANY MANNER OR DISCLOSED TO ANYONE WITHOUT THE PRIOR WRITTEN CONSENT OF OVERHEAD DOOR CORPORATION. NO DISCLOSURE OF ANY OF THIS DRAWING OR INFORMATION IS INTENDED TO OPERATE AS A LICENSE OR AUTHORIZATION TO USE IT FOR ANY PURPOSE WITHOUT THE SPECIFIC WRITTEN CONSENT OF OVERHEAD DOOR CORPORATION.		FINISH: N/A		DATE: 1/14/21	
TOLERANCES UNLESS OTHERWISE SPECIFIED		UNIT OF MEASURE: EA		DRAWING TITLE: WINDLOAD, OPTION CODE 2020	
HOLE DIAMETER	WHOLE NUMBERS: ± .25	MATERIAL: N/A		SERIES: 421/423/427/429/434/436	
UNDER .251 +.004/- .003	.X ± .1	N/A		11.4'-12.7' PSF, 12'-2" MAX	
.251 TO .500 +.006/- .003	.XX ± .03	N/A		DRAWING NUMBER: D-411789	
OVER .500 +.008/- .003	.XXX ± .010	N/A		SCALE: N/A	
FRACTIONS	ANGLES: ± .5°	N/A		SHEET 1 OF 3	
± 1/16		N/A			

1/4-20x9/16" TRACK BOLT AND 1/4-20 HEX NUT THROUGH THE SLOT IN THE TRACK AND TRACK CLIP



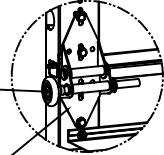
DETAIL A

12 GA COMMERCIAL TOP FRAME BRACKET WITH 13 GA ROLLER CARRIER ATTACHED WITH (4) 1/4-14x7/8" SELF DRILLING CRIMPITITE SCREWS



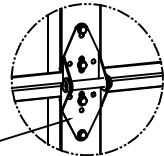
DETAIL B

2" STEEL ROLLER WITH 5-1/8" STEM AND 7/16" PUSHNUT AT EACH ROLLER LOCATION. 1/4" MAX BETWEEN PUSHNUT AND BRACKET OR HINGE



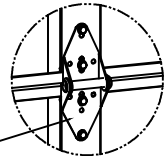
DETAIL C

13 GA WIDE BODY END HINGES EACH ATTACHED WITH (4) 1/4-14x7/8" SELF DRILLING CRIMPITITE SCREWS

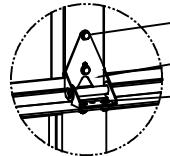


SOLID SECTION

14 GA WIDE BODY INTERMEDIATE HINGE ATTACHED WITH (4) 1/4-14x7/8" SELF DRILLING CRIMPITITE SCREWS



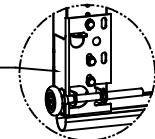
DETAIL D



AFV SECTION

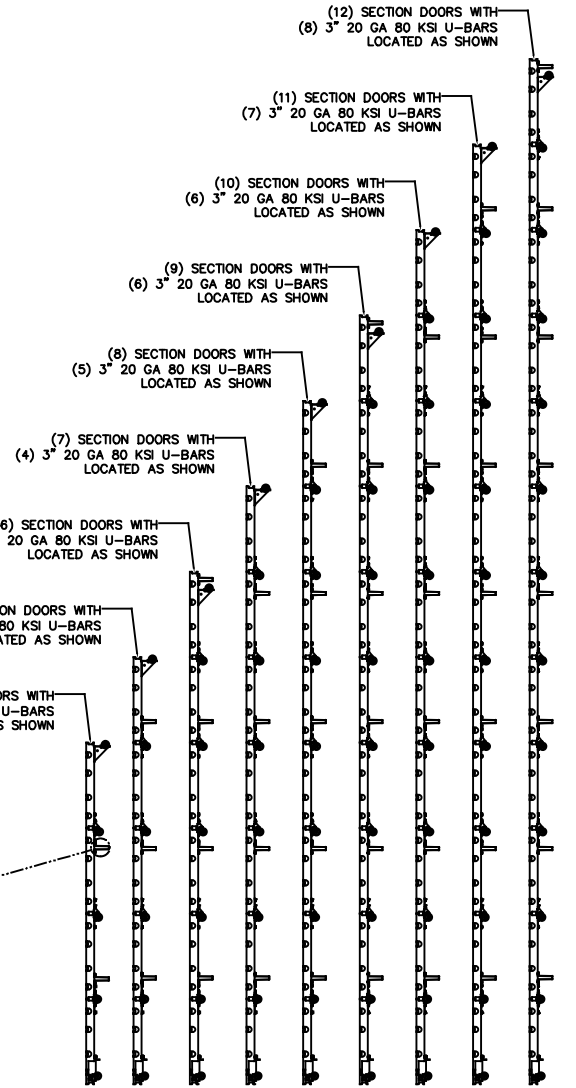
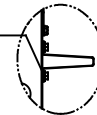
(2) 1/4-14x7/8" SELF DRILLING CRIMPITITE SCREWS
HALF HINGE
(2) 1/4 x 1/2" CARRIAGE BOLTS AND 1/4" FLANGE NUTS

12 GA BOTTOM BRACKET ATTACHED WITH (3) 1/4-14x7/8" SELF DRILLING CRIMPITITE SCREWS (2 THROUGH STRUT AND BRACKET)

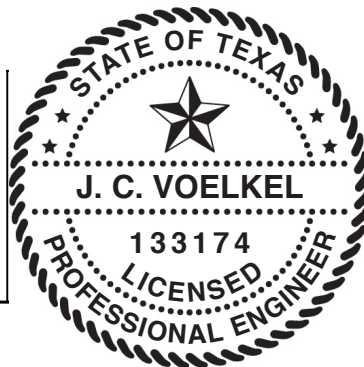


DETAIL E

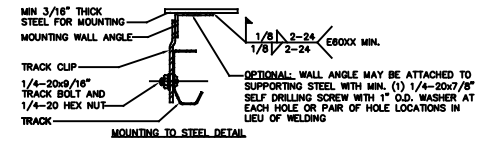
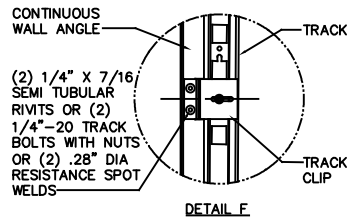
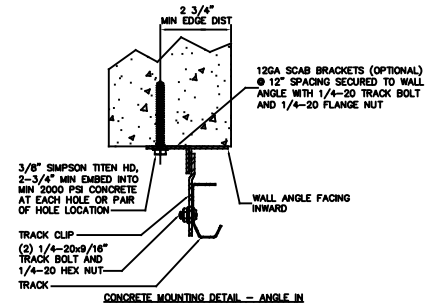
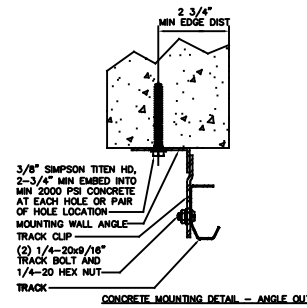
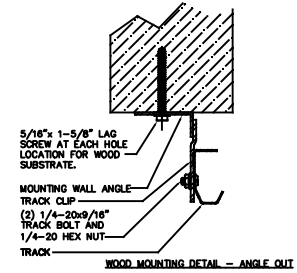
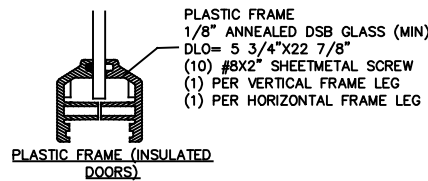
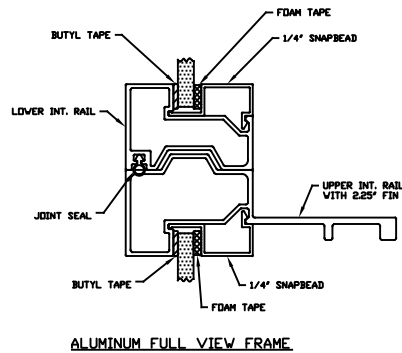
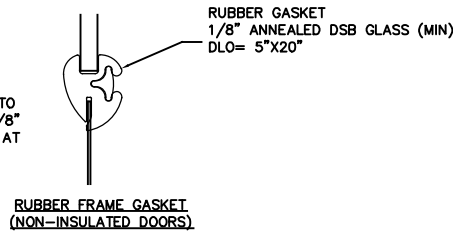
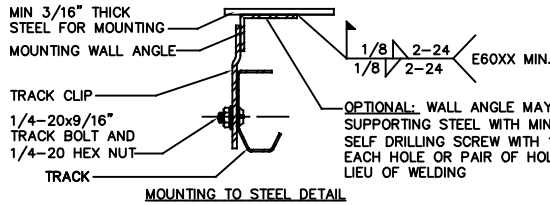
ATTACH U-BARS WITH (2) 1/4-14x7/8" SELF DRILLING CRIMPITITE SCREWS AT ALL STILE LOCATIONS, TYP.



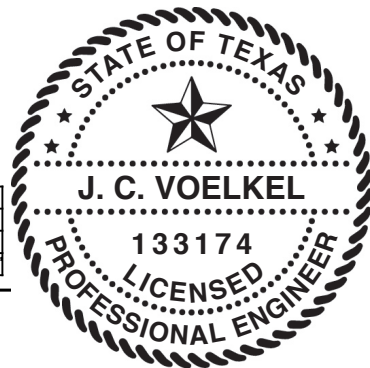
STATIC PRESSURE RATINGS	APPROVED SIZES
DESIGN PRESSURE(PSF): +11.4/-12.7	MAX WIDTH: 12'-2"
	MAX HEIGHT: 24'-1"
IMPACT/CYCLIC RATED: NO	MAX SECTION HEIGHT: 24'



THE DRAWINGS AND ALL OTHER INFORMATION CONTAINED HEREIN ARE THE CONFIDENTIAL AND PROPRIETARY PROPERTY OF OVERHEAD DOOR CORPORATION AND ITS AFFILIATED COMPANIES. THIS DRAWING AND INFORMATION, IN WHOLE OR IN PART, MAY NOT BE COPIED IN ANY MANNER OR DISCLOSED TO ANYONE WITHOUT THE PRIOR WRITTEN CONSENT OF OVERHEAD DOOR CORPORATION. NO DISCLOSURE OF ANY OF THIS DRAWING OR INFORMATION IS INTENDED TO OPERATE AS A LICENSE OR AUTHORIZATION TO USE IT FOR ANY PURPOSE WITHOUT THE SPECIFIC WRITTEN CONSENT OF OVERHEAD DOOR CORPORATION.			
 TOLERANCES UNLESS OTHERWISE SPECIFIED HOLE DIAMETER UNDER .251 +.004/- .003 .251 TO .500 +.006/- .003 OVER .500 +.008/- .003 FRACTIONS ± 1/16 REF DWG USED ON	FINISH N/A UNIT OF MEASURE EA	MATERIAL N/A	DATE 1/14/21 1/14/21 4/27/21
	WHOLE NUMBERS: ± .25 .X ± .1 .XX ± .03 .XXX ± .010 ANGLES: ± .5°	THE GENUINE, THE ORIGINAL. LEVYVILLE, TEXAS OVERHEAD DOOR CORPORATION	NAME T. CLARK J. QIAN T. CLARK



STATIC PRESSURE RATINGS	APPROVED SIZES
DESIGN PRESSURE(PSF): +11.4/-12.7	MAX WIDTH: 12'-2"
	MAX HEIGHT: 24'-1"
IMPACT/CYCLIC RATED: NO	MAX SECTION HEIGHT: 24'



THESE DRAWINGS ARE THE PROPERTY OF OVERHEAD DOOR CORPORATION AND ARE NOT TO BE REPRODUCED OR COPIED IN ANY MANNER WITHOUT THE WRITTEN CONSENT OF OVERHEAD DOOR CORPORATION.		FINISH		DATE		DRAWING TITLE	
REF DWG	USED ON	UNDER 251 +.004/- .003	WHOLE NUMBERS: ± .25	N/A	1/14/21	LEWISVILLE, TEXAS	WINDLOAD, OPTION CODE 2020
		251 TO 500 +.006/- .003	X ± .1				SERIES 421/423/427/429/434/436, 11.4/-12.7 PSF, 12'-2" MAX
		OVER 500 +.008/- .003	.XX ± .03	UNIT OF MEASURE			
		FRACTIONS ± 1/16	.XXX ± .010				DRAWING NUMBER
			ANGLES: ± .5°	EA			D-411789
							SCALE: N/A
							SHEET 3 OF 3