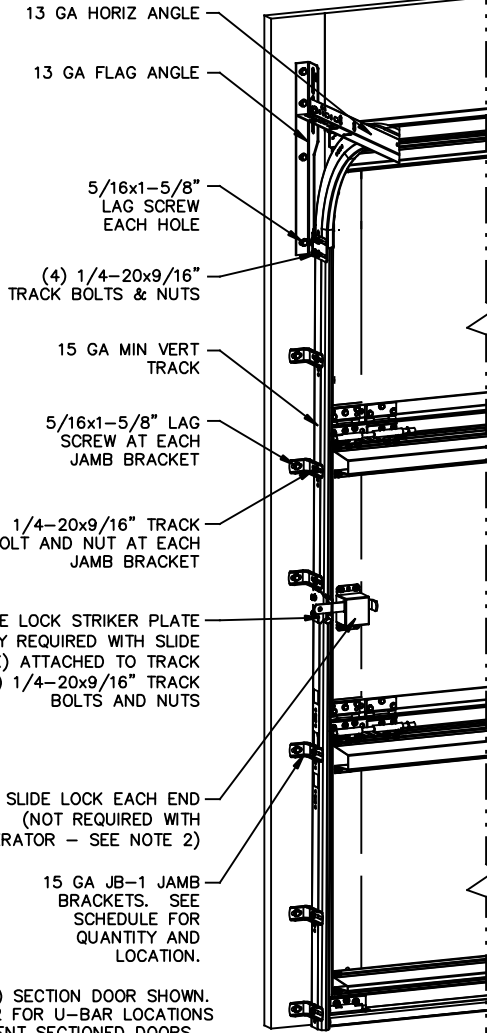


NOTES:

- VINYL OR WOOD DOOR STOP NAILED A MAXIMUM OF 6" O.C. MUST OVERLAP TOP AND BOTH ENDS OF PANELS MINIMUM 7/16" TO MEET NEGATIVE PRESSURES.
- SLIDE LOCK OR OPERATOR REQUIRED. LOW HEADROOM REQUIRES A LOCK ON THE LEFT AND RIGHT SIDE OF THE DOOR.
- THE DESIGN OF THE SUPPORTING STRUCTURAL ELEMENTS SHALL BE THE RESPONSIBILITY OF THE PROFESSIONAL OF RECORD FOR THE BUILDING OR STRUCTURE AND IN ACCORDANCE WITH CURRENT BUILDING CODES FOR THE LOADS LISTED ON THIS DRAWING.
- SECTION STEEL TO HAVE THE FOLLOWING MINIMUM THICKNESS:
EXTERIOR - 27 GA
INTERIOR - 30 GA
- DOOR JAMB TO BE MINIMUM 2x6 STRUCTURAL GRADE SOUTHERN PINE LUMBER. REFER TO JAMB CONNECTION SUPPLEMENT FOR ATTACHMENT TO SUPPORTING STRUCTURE.
- FOR LOW HEAD ROOM LIFT CONDITIONS, TOP BRACKET SHALL BE A LHR TOP BRACKET IN LIEU OF THE BRACKET SHOWN ON THIS DRAWING. SEE LHR, DETAIL A, SHEET 2.
- FOR LOW HEAD ROOM APPLICATIONS, THE UPPERMOST JAMB BRACKET IS OMITTED.
- MAX WINDOW SIZE IS 37-1/4" x 19-1/4", .125 DSB, USING 16 SCREWS PER FRAME.
- 11 GA ROLLER SLIDES WITH WELDED ENDS AND 11 GA REINFORCING BRACKETS REQUIRED FOR DOORS >8' TALL.



NOTE: (3) SECTION DOOR SHOWN. SEE PAGE 2 FOR U-BAR LOCATIONS FOR DIFFERENT SECTIONED DOORS.

JAMB BRACKET SCHEDULE			
DOOR HEIGHT	NO. OF SECTIONS	NO. OF JAMB BRACKETS (EACH JAMB)	LOCATION OF CENTERLINE OF JAMB BRACKETS MEASURED FROM BOTTOM OF TRACK (ALL DIMENSIONS ± 2")
7'-0"	3	6	2", 10", 26", 42", 53", 63"
8'-0"	4	8	2", 10", 26", 39", 48", 57", 66", 75"
> 8'-0"			SEE NOTE BELOW

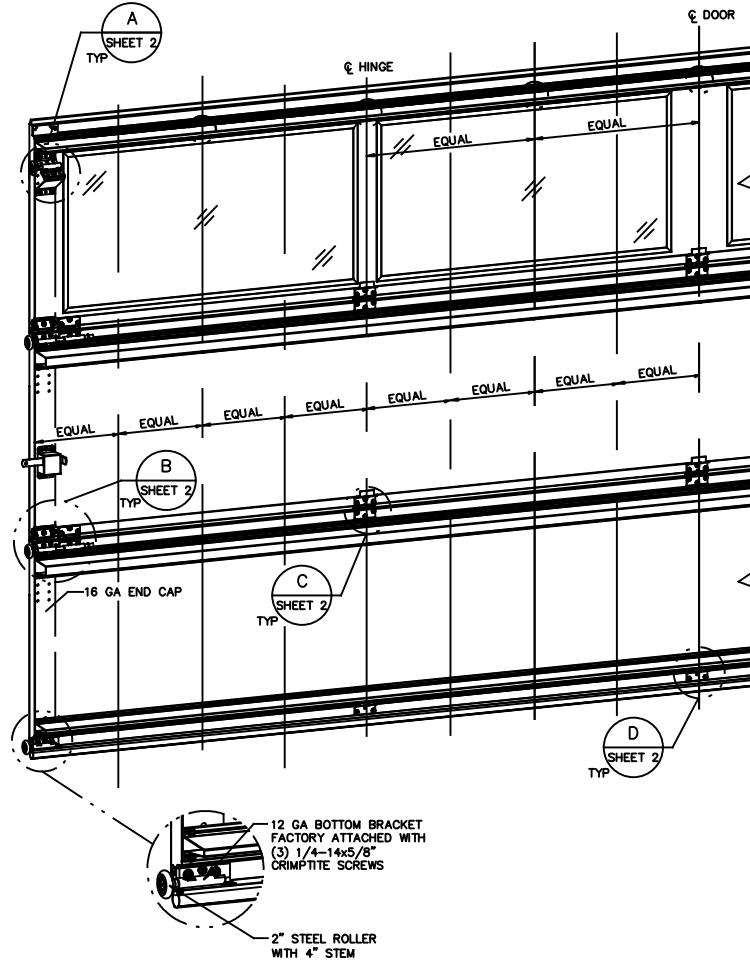
NOTE: ALL DOORS GREATER THAN 8' IN HEIGHT REQUIRE USE OF CONTINUOUS WALL ANGLE. SEE SUPPLEMENT TRACK CHART FOR DETAILS.

SUPERIMPOSED DESIGN PRESSURE LOADS ON SUPPORTING STRUCTURE

DOOR WIDTH	DOOR HEIGHT	UNIFORM LOAD EACH JAMB (PLF)
16'-0"	7'-0"	+240.0/-268.0
	8'-0"	+240.0/-268.0

PROFESSIONAL ENGINEER'S SEAL PROVIDED ONLY FOR VERIFICATION OF WINDLOAD CONSTRUCTION DETAILS.

FASTENERS AT AND MIDWAY BETWEEN ALL INTERMEDIATE HINGE LOCATIONS AND MIDWAY BETWEEN THOSE LOCATIONS. SEE NOTE SHEET 2



REVISIONS

- POO CREATED NEW DRAWING FOR WINDLOAD OPTIONS 8-24-16 GAC
- P01 ER 31281 REV NOMENCLATURE TO 1144 GRADE STEEL ROLLER 2-3-17 GAC

This door has been tested per ANSI/DASMA 108

STATIC PRESSURE RATINGS		APPROVED SIZES		SCALE: N.T.S.		SIZE: A	
DESIGN (PSF):	+30.00/-33.50	MAX WIDTH:	16'-0"	DATE	8-24-16	NAME	GAC
IMPACT/CYCLIC RATED (YES/NO): NO		MAX HEIGHT:	14'-0"	DRAWN	8-24-16	CHECKED	DK
		MAX SECTION HEIGHT:	28"	SHEET 1 OF 2			
MODELS 300-309/5800				DRAWING PART NO.			
WINDLOAD SPECIFICATION				411449		REV. P01	

The Genuine. The Original.

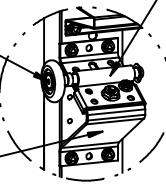


Lewisville, TX

JOHN E. SCATES, PE
3121 FAIRGATE DR.
CARROLLTON, TX 75007
FL PE 51737 TX PE 56308/F-2203

STANDARD LIFT TRACK

2" STEEL ROLLER WITH 4" STEM WITH PUSHNUT 1/2" FROM SLIDE
 13 GA COMMERCIAL 'A' FRAME TOP BRACKET ATTACHED WITH (4) 1/4-20x7/8" SELF DRILLING SCREWS

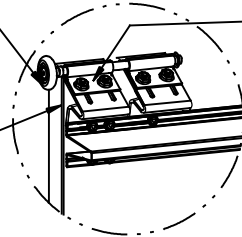


13 GA ROLLER SLIDE ATTACHED TO BRACKET WITH 5/16-18 BOLT & NUT IN CENTER SLOT AND 1/4-20x9/16" TRACK BOLT & NUT THROUGH ANY TWO ALIGNING HOLES

2" 1144 GRADE STEEL ROLLER WITH 9" STEM WITH PUSHNUT 1/2" FROM SLIDE

LOW HEADROOM TRACK

14GA LHR TOP BRACKET ATTACHED TO DOOR WITH (3) 1/4-20 X 11/16" SELF DRILLING AND (2) #12 X 1/2" PHILLIPS SCREWS



13 GA ROLLER SLIDE ATTACHED TO BRACKET WITH (2) 1/4-20 CARRIAGE BOLTS

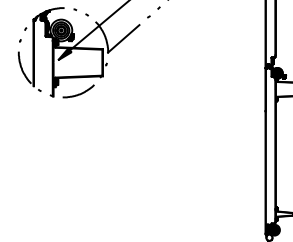
(7) SECTION DOORS WITH (6) 4" 16 GA & (2) 3" 18 GA 80 KSI U-BARS LOCATED AS SHOWN (TOP BRACKET REMOVED FOR CLARITY)

(6) SECTION DOORS WITH (5) 4" 16 GA & (2) 3" 18 GA 80 KSI U-BARS LOCATED AS SHOWN (TOP BRACKET REMOVED FOR CLARITY)

(5) SECTION DOORS WITH (4) 4" 16 GA & (2) 3" 18 GA 80 KSI U-BARS LOCATED AS SHOWN (TOP BRACKET REMOVED FOR CLARITY)

(4) SECTION DOORS WITH (3) 4" 16 GA & (2) 3" 18 GA 80 KSI U-BARS LOCATED AS SHOWN (TOP BRACKET REMOVED FOR CLARITY)

(3) SECTION DOORS WITH (2) 4" 16 GA & (2) 3" 18 GA 80 KSI U-BARS LOCATED AS SHOWN (TOP BRACKET REMOVED FOR CLARITY)



UNLESS NOTED OTHERWISE, ALL U-BARS SHALL BE ATTACHED WITH A MINIMUM OF (4) FASTENERS AT EACH END, (2) FASTENERS AT ALL INTERMEDIATE HINGE LOCATIONS, MIDWAY BETWEEN INTERMEDIATE HINGE LOCATIONS, AND MIDWAY BETWEEN THOSE MIDWAY LOCATIONS. (SEE DIAGRAM SHEET 1). ALL FASTENERS USED TO ATTACH U-BARS SHALL BE 1/4-20x7/8" SELF DRILLING.

DETAIL A

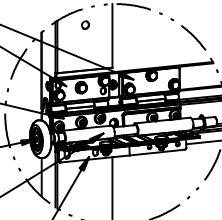
(2) 15 GA HINGE LEAFS ATTACHED WITH (3) 1/4-14x5/8" CRIMPTITE SCREWS EACH

14 GA HINGE BASE FACTORY ATTACHED TO DOOR WITH (5) 1/4-14x5/8" CRIMPTITE SCREWS

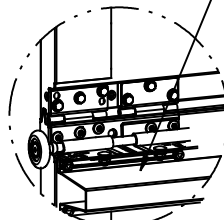
2" 1144 GRADE OR EQUIVALENT STEEL ROLLER WITH 9" STEM WITH PUSHNUT 1/2" FROM SLIDE

13 GA ROLLER CARRIERS FACTORY ATTACHED TO HINGE BASE AND REINFORCING BRACKET. (EXCEPTION: NOTE #9)

13 GA REINFORCING BRACKET ATTACHED BENEATH HINGE BASE. (EXCEPTION: NOTE #9)



BEFORE U-BAR INSTALLATION

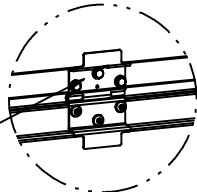


AFTER U-BAR INSTALLATION

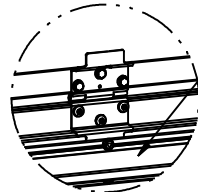
POSITION U-BAR OVER REINFORCING BRACKET AND ATTACH WITH (4) 1/4-20x7/8" SELF DRILLING SCREWS

DETAIL B

15 GA HINGE ATTACHED WITH (6) 1/4-14x5/8" CRIMPTITE SCREWS



BEFORE U-BAR INSTALLATION

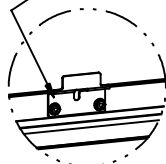


AFTER U-BAR INSTALLATION

POSITION U-BAR OVER HINGE LEAF AND ATTACH WITH (2) 1/4-20x7/8" SELF DRILLING SCREWS AS SHOWN

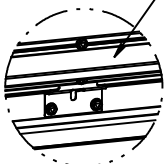
DETAIL C

15 GA HINGE BRACKET ATTACHED WITH (2) 1/4-20x7/8" SELF DRILLING SCREWS



BEFORE U-BAR INSTALLATION

POSITION U-BAR OVER HINGE BRACKET AND ATTACH WITH (2) 1/4-20x7/8" SELF DRILLING SCREWS AS SHOWN



AFTER U-BAR INSTALLATION

DETAIL D

The Genuine. The Original.



Lewisville, TX

PROFESSIONAL ENGINEER'S SEAL PROVIDED ONLY FOR VERIFICATION OF WINDLOAD CONSTRUCTION DETAILS.

STATIC PRESSURE RATINGS		APPROVED SIZES		SCALE: N.T.S.		SIZE: A	
DESIGN (PSF):	+30.00/-33.50	MAX WIDTH:	16'-0"	DATE	NAME		
		MAX HEIGHT:	14'-0"	DRAWN	8-24-16 GAC		
IMPACT/CYCLIC RATED (YES/NO):	NO	MAX SECTION HEIGHT:	28"	CHECKED	8-24-16 DK		
MODELS 300-309/5800				SHEET 2 OF 2			
WINDLOAD SPECIFICATION				DRAWING PART NO.		REV.	
				411449		P01	