

NOTES:

- VINYL OR WOOD DOOR STOP NAILED A MAXIMUM OF 6" O.C. MUST OVERLAP TOP AND BOTH ENDS OF PANELS MINIMUM 7/16" TO MEET NEGATIVE PRESSURES.
- SLIDE LOCK OR OPERATOR REQUIRED. LOW HEADROOM REQUIRES A LOCK ON THE LEFT AND RIGHT SIDE OF THE DOOR.
- THE DESIGN OF THE SUPPORTING STRUCTURAL ELEMENTS SHALL BE THE RESPONSIBILITY OF THE PROFESSIONAL OF RECORD FOR THE BUILDING OR STRUCTURE AND IN ACCORDANCE WITH CURRENT BUILDING CODES FOR THE LOADS LISTED ON THIS DRAWING.
- SECTION STEEL TO HAVE THE FOLLOWING MINIMUM THICKNESS:
EXTERIOR - 27 GA
INTERIOR - 30 GA
- DOOR JAMB TO BE MINIMUM 2x6 STRUCTURAL GRADE LUMBER AND BE SPRUCE, PINE, OR FIR. REFER TO JAMB CONNECTION SUPPLEMENT FOR ATTACHMENT TO SUPPORTING STRUCTURE.
- FOR LOW HEAD ROOM LIFT CONDITIONS, TOP BRACKET SHALL BE A LHR TOP BRACKET IN LIEU OF THE BRACKET SHOWN ON THIS DRAWING. SEE LHR, DETAIL A, SHEET 2.
- GLAZING OPTIONS - .125" MINIMUM TEMPERED GLAZING INSTALLED IN TOP SECTION (WITH OR WITHOUT DECORATIVE LITE FRAME DIVIDERS) MEETS UNIFORM STATIC WIND PRESSURES SHOWN ON THIS DRAWING. GLAZING IS NOT IMPACT RESISTANT AND DOES NOT MEET THE REQUIREMENTS FOR WIND-BORNE DEBRIS REGIONS.
- 11 GA ROLLER SLIDES WITH WELDED ENDS AND 11 GA REINFORCING BRACKETS REQUIRED FOR DOORS > 8' TALL.

- 13 GA HORIZ ANGLE
- 13 GA FLAG ANGLE
- 5/16x1-5/8" LAG SCREW EACH HOLE
- (4) 1/4-20x9/16" TRACK BOLTS & NUTS
- 16 GA MIN VERT TRACK
- 5/16x1-5/8" LAG SCREW AT EACH JAMB BRACKET
- 1/4-20x9/16" TRACK BOLT AND NUT AT EACH JAMB BRACKET
- SECURE LOCK STRIKER PLATE (ONLY REQUIRED WITH SLIDE LOCK) ATTACHED TO TRACK WITH (2) 1/4-20x9/16" TRACK BOLTS AND NUTS
- SLIDE LOCK (NOT REQUIRED WITH OPERATOR - SEE NOTE 2)
- 15 GA JB-1 JAMB BRACKETS. SEE SCHEDULE FOR QUANTITY AND LOCATION.

NOTE: (3) SECTION DOOR SHOWN. SEE SHEET 2 FOR U-BAR LOCATIONS ON DOORS WITH OTHER SECTION QUANTITIES.

JAMB BRACKET SCHEDULE			
DOOR HEIGHT	NO. OF SECTIONS	NO. OF JAMB BRACKETS (EACH JAMB)	LOCATION OF CENTERLINE OF JAMB BRACKETS MEASURED FROM BOTTOM OF TRACK (ALL DIMENSIONS ± 2")
7'-0"	3	6	2", 10", 26", 42", 53", 63"
8'-0"	4	8	2", 10", 26", 39", 48", 57", 66", 75"
> 8'-0"			SEE NOTE BELOW

NOTE: ALL DOORS GREATER THAN 8' IN HEIGHT REQUIRE USE OF CONTINUOUS WALL ANGLE. SEE SUPPLEMENT TRACK CHART FOR DETAILS.

SUPERIMPOSED DESIGN PRESSURE LOADS ON SUPPORTING STRUCTURE

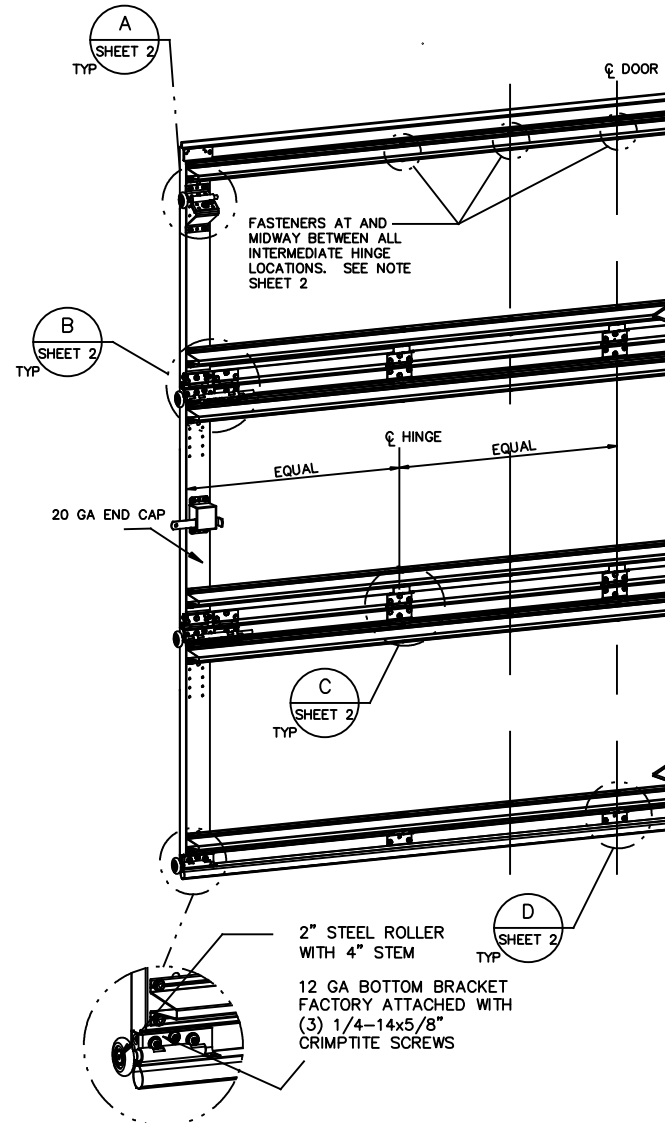
DOOR WIDTH	DOOR HEIGHT	UNIFORM LOAD EACH JAMB (PLF)
9'-0"	ALL	+203.9/-230.4
8'-0"	ALL	+181.2/-204.8

PROFESSIONAL ENGINEER'S SEAL PROVIDED ONLY FOR VERIFICATION OF WINDLOAD CONSTRUCTION DETAILS.

The Genuine. The Original.



Lewisville, TX



This door has been tested per ANSI/DASMA 108

STATIC PRESSURE RATINGS		APPROVED SIZES	SCALE: N.T.S.	SIZE: A
DESIGN (PSF):	+45.30/-51.20	MAX WIDTH: 9'-0"	DATE	NAME
IMPACT/CYCLIC RATED (YES/NO): NO		MAX HEIGHT: 14'-0"	DRAWN	8-23-16
		MAX SECTION HEIGHT: 28"	CHECKED	8-23-16
MODELS 300-309/5800			SHEET 1 OF 2	
WINDLOAD SPECIFICATION			DRAWING PART NO.	REV.
			411424	P00

- REVISIONS**
- P4 CHANGES MADE PER ETC LABORATORIES TESTING AND CHANGES TO GENERAL FORMAT 1/12/06 GRT
 - P5 UPDATED TITLE BLOCK 4/15/13 GRT
 - P6 UPDATED FOR TESTING AND CHANGES IN GENERAL FORMAT 8-19-16 GAC

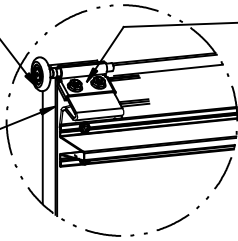
LOW HEADROOM TRACK

STANDARD LIFT TRACK

U-BAR LOCATIONS (7) SECTION DOORS WITH (14) 3" 20 GA 80 KSI U-BARS LOCATED AS SHOWN (TOP BRACKET REMOVED FOR CLARITY)

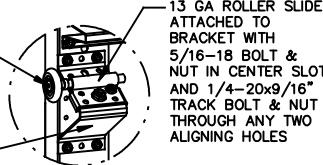
REVISIONS

2" STEEL ROLLER WITH 4" STEM
14GA LHR TOP BRACKET ATTACHED TO DOOR WITH (3) 1/4-20 X 11/16" SELF DRILLING AND (2) #12 X 1/2" PHILLIPS SCREWS



13 GA ROLLER SLIDE ATTACHED TO BRACKET WITH 5/16-18 BOLT & NUT IN CENTER SLOT AND 1/4-20x9/16" TRACK BOLT & NUT THROUGH ANY TWO ALIGNING HOLES

2" STEEL ROLLER WITH 4" STEM
13 GA COMMERCIAL 'A' FRAME TOP BRACKET ATTACHED WITH (4) 1/4-20x7/8" SELF DRILLING SCREWS



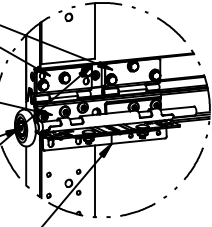
13 GA ROLLER SLIDE ATTACHED TO BRACKET WITH 5/16-18 BOLT & NUT IN CENTER SLOT AND 1/4-20x9/16" TRACK BOLT & NUT THROUGH ANY TWO ALIGNING HOLES

DETAIL A

(2) 15 GA HINGE LEAFS ATTACHED WITH (3) 1/4-14x5/8" CRIMP TITE SCREWS EACH

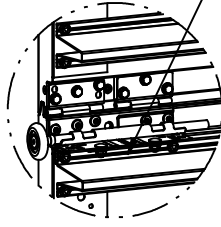
14 GA HINGE BASE FACTORY ATTACHED TO DOOR WITH (5) 1/4-14x5/8" CRIMP TITE SCREWS

2" 1144 GRADE OR EQUIVALENT STEEL ROLLER WITH 9" STEM
13 GA ROLLER CARRIERS FACTORY ATTACHED TO HINGE BASE AND REINFORCING BRACKET. (EXCEPTION: NOTE #8)



BEFORE U-BAR INSTALLATION

POSITION U-BAR OVER REINFORCING BRACKET AND ATTACH WITH (3) 1/4-20x7/8" SELF DRILLING SCREWS AS SHOWN (2 OF WHICH ATTACH THROUGH REINFORCING BRACKET)

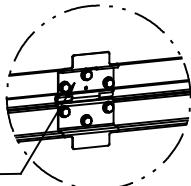


AFTER U-BAR INSTALLATION

POSITION U-BAR ADJACENT TO HINGE LEAF AND ATTACH WITH (2) 1/4-14x5/8" CRIMP TITE SCREWS AS SHOWN

DETAIL B

POSITION U-BAR OVER HINGE LEAF AND ATTACH WITH (1) 1/4-14x5/8" CRIMP TITE SCREW AND (1) 1/4-20x7/8" SELF DRILLING SCREW AS SHOWN (SELF DRILLING SCREW ATTACHES THROUGH HINGE LEAF)



BEFORE U-BAR INSTALLATION



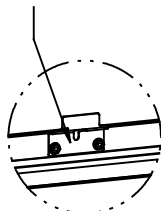
AFTER U-BAR INSTALLATION

15 GA HINGE ATTACHED WITH (6) 1/4-14x5/8" CRIMP TITE SCREWS

13 GA REINFORCING BRACKET ATTACHED BENEATH HINGE BASE. (EXCEPTION: NOTE #8)

DETAIL C

15 GA HINGE BRACKET ATTACHED WITH (2) 1/4-20x7/8" SELF DRILLING SCREWS



BEFORE U-BAR INSTALLATION

POSITION U-BAR OVER HINGE BRACKET AND ATTACH WITH (1) 1/4-14x5/8" CRIMP TITE SCREW AND (1) 1/4-20x7/8" SELF DRILLING SCREW AS SHOWN (SELF DRILLING SCREW ATTACHES THROUGH HINGE BRACKET)



AFTER U-BAR INSTALLATION

DETAIL D

UNLESS NOTED OTHERWISE, ALL U-BARS SHALL BE ATTACHED WITH A MINIMUM OF (2) FASTENERS AT EACH END AND AT ALL INTERMEDIATE HINGE LOCATIONS (OR IN LINE WITH INTERMEDIATE HINGE LOCATIONS IF U-BAR IS NOT LOCATED AT A HINGE). ALL FASTENERS USED TO ATTACH U-BARS SHALL BE 1/4-14x5/8" CRIMP TITE SCREWS EXCEPT 1/4-20x7/8" SELF DRILLING SCREWS SHALL BE USED AT END CAPS AND WHERE FASTENING THROUGH HINGE LEAFS OR BRACKETS.

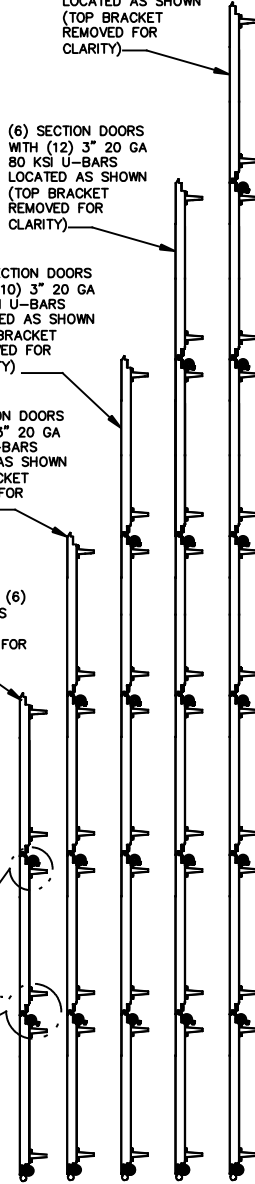
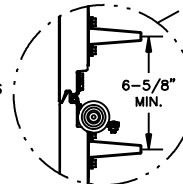
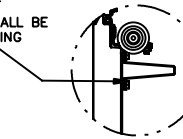
(3) SECTION DOORS WITH (6) 3" 20 GA 80 KSI U-BARS LOCATED AS SHOWN (TOP BRACKET REMOVED FOR CLARITY)

(4) SECTION DOORS WITH (8) 3" 20 GA 80 KSI U-BARS LOCATED AS SHOWN (TOP BRACKET REMOVED FOR CLARITY)

(5) SECTION DOORS WITH (10) 3" 20 GA 80 KSI U-BARS LOCATED AS SHOWN (TOP BRACKET REMOVED FOR CLARITY)

(6) SECTION DOORS WITH (12) 3" 20 GA 80 KSI U-BARS LOCATED AS SHOWN (TOP BRACKET REMOVED FOR CLARITY)

NOTE: U-BARS SHOULD BE INSTALLED LEVEL ACROSS DOOR AND MAINTAIN A MINIMUM CENTERLINE SPACING OF 6-5/8" BETWEEN U-BARS ON ADJACENT SECTIONS



The Genuine. The Original.



Louisville, TX

DESIGN (PSF):	STATIC PRESSURE RATINGS	APPROVED SIZES	SCALE: N.T.S.	SIZE: A
	+45.30/-51.20	MAX WIDTH: 9'-0"	DATE	NAME
		MAX HEIGHT: 14'-0"	8-23-16	GAC
IMPACT/CYCLIC RATED (YES/NO): NO		MAX SECTION HEIGHT: 28"	CHECKED	8-23-16
		MODELS 300-309/5800	SHEET 2 OF 2	
		WINDLOAD SPECIFICATION	DRAWING PART NO.	REV.
			411424	P00

JOHN E. SCATES, PE
3121 FAIRGATE DR.
CARROLLTON, TX 75007
FL. PE 51737 TX. PE 56308/F-2203

PROFESSIONAL ENGINEER'S SEAL PROVIDED ONLY FOR VERIFICATION OF WINDLOAD CONSTRUCTION DETAILS.