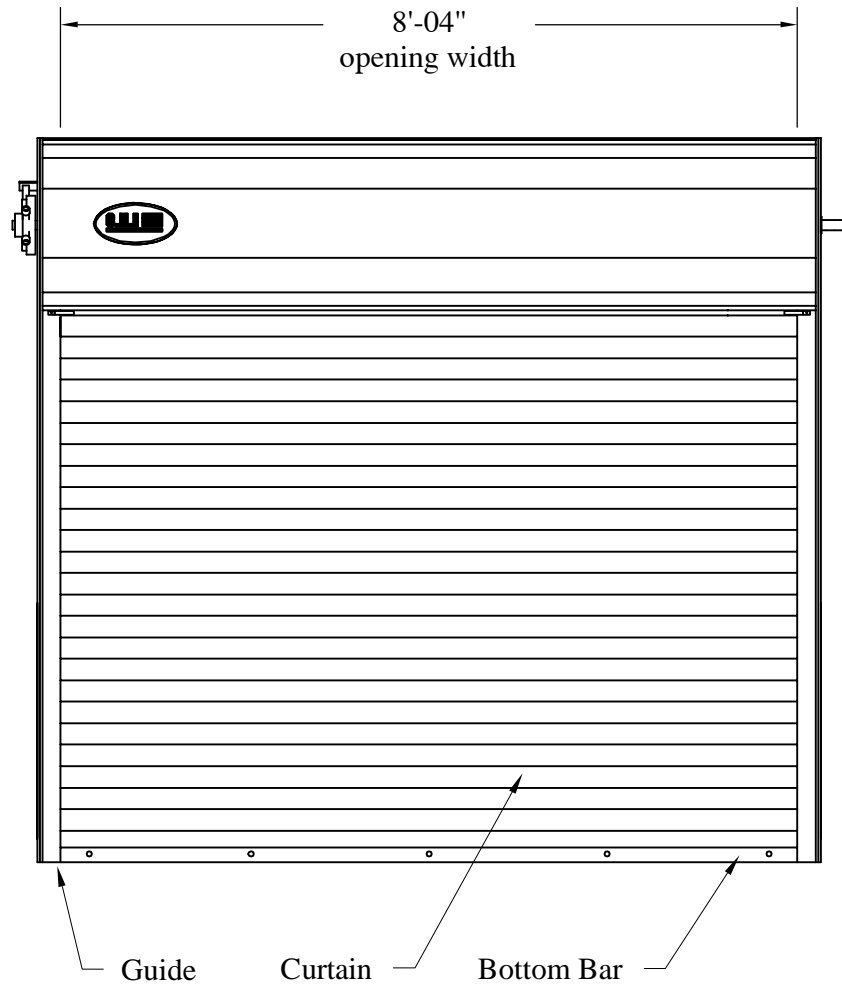



This door has been evaluated in accordance with ASTM E 330-02 and ANSI/DASMA 108-02 and 108-05. Per ASCE 7-05, Design Pressures (DP) +34.7/-43.1psf typically meet or exceed 155mph exposure "B" requirements for 8'-04" x 8' doors.



John E. Scates, P.E.  
 3121 Fairgate Drive  
 Carrollton, Texas 75007  
 TX P.E. # 56308 F-2203

 <small>1485 Sunrise Drive, Arthur, IL 61911</small>	Date: 8-31-2015
	Models: 6202, 6222, 6242, 6181, 6201, 6221, 6266
8'-04" wide +34.7/-43.1psf	
C.H.I. Drawing: TZ7n-08-R1002	

Maximum door height: 24'-0"

Professional Engineer's seal provided only for verification of windload construction details

**Guide Details**

**1. Jamb Material:**

Steel (3/16" thick, A500 Structural) or  
Concrete (2000psi, minimum) or  
Filled CMU (2000psi, minimum)

**2. Wall Angle: (A36 Structural Steel Angle)**

a. 3" x 3" x 3/16"

"E" Guide Configuration For Steel Jamb.

b. 3" x 3" x 3/16"

"Z" Guide Configuration For concrete Jamb.

**3. Jamb Fastener: (Quantity Shown On Page 3)**

a. Steel: 3/8"-16 x 1" Self Tapping Bolt (ASME B18.6.3)

b. Welding of Guides: 3/16" Fillet Weld  
Perimeter of Slot Utilizing an E60 Electrode.  
Slot Quantity Same as Steel.

c. Simpson Strong-Tie (Concrete) or Hilti (Filled CMU):  
3/8"x4" Simpson Strong-Tie Titen HD (concrete) or  
5/8"x5" (4" embedment) Hilti KWIK BOLT 3 (Filled CMU) or  
3/8"x3.75" (2.5" embedment) Hilti KWIK BOLT 3 (Filled CMU)

d. Through Bolt (Concrete or Filled CMU):  
3/8"-16 Bolt or Rod (minimum 115,000 psi), Nut, and .75"OD flat washers,  
with Square crush plate: 2.5"x2.5"x0.25" thick (A36 steel or better)

**4. Guide to Guide Fastener :**

3/8"-16 x 1-1/4" Grade 2 Carriage Bolt  
with Steel Serrated-Flange Hex Locknut 3/8"-16  
not to exceed 24" on centers.

**5. Back Angle: (A36 Structural Steel Angle)**

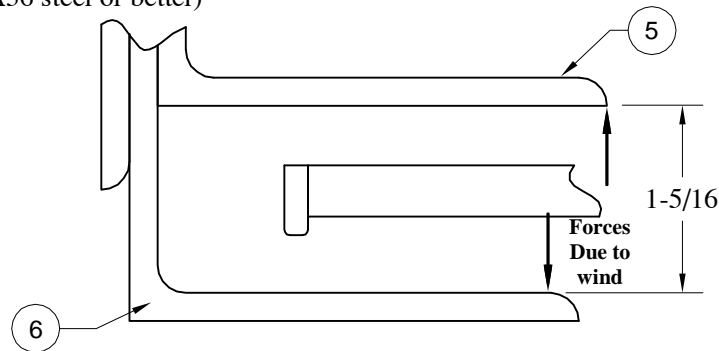
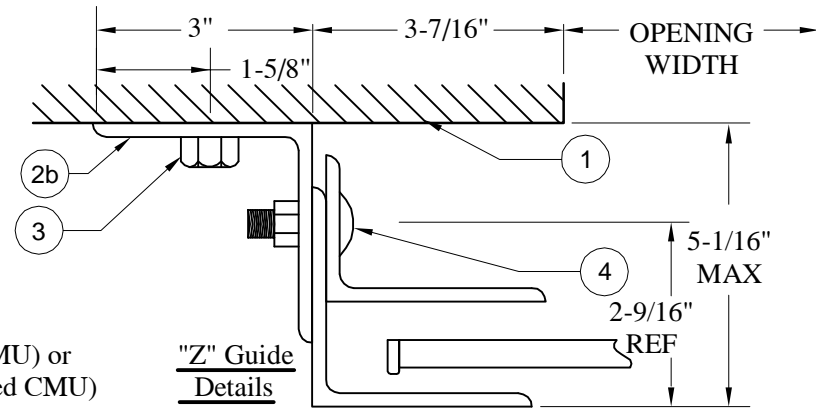
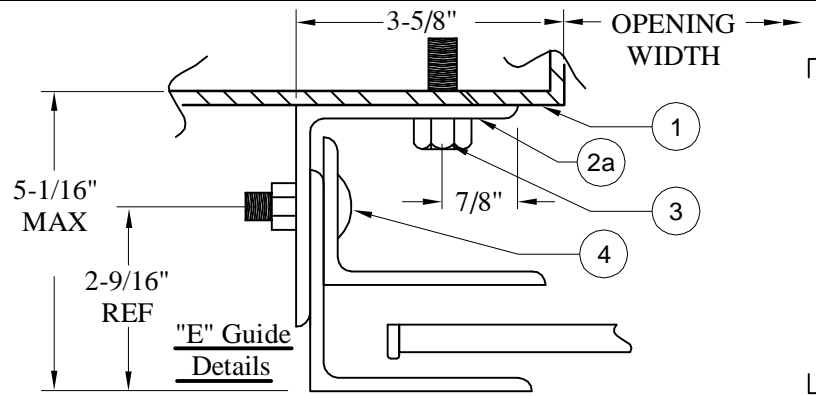
2" x 3" x 3/16"

**6. Face Angle: (A36 Structural Steel Angle)**

3" x 3" x 3/16"

**7. Slat Cut-Length:**


Slat Length = Opening Width plus 4-3/4"

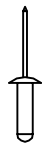
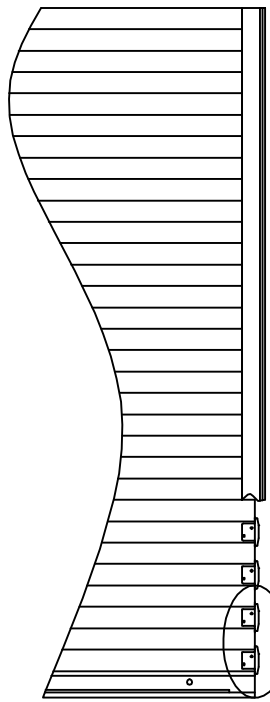


**Slip Detail**

John E. Scates, P.E.  
3121 Fairgate Drive  
Carrollton, Texas 75007  
TX P.E. # 56308 F-2203

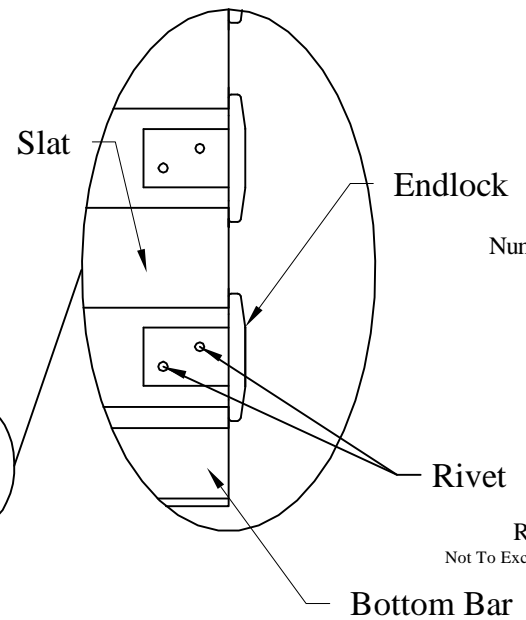
The jambs must be designed (by others) to withstand direct forces due to wind (width x psf/2) on this door. Forces are in units of "pounds per foot tall". Direct forces due to wind occur in both (+) and (-) directions.

 <small>ROLLING STEEL DOORS</small> <small>1485 Sunrise Drive, Arthur, IL 61911</small>	Date: 8-31-2015
	Models: 6202, 6222, 6242, 6181, 6201, 6221, 6266
8'-04" wide +34.7/-43.1psf	
C.H.I. Drawing: TZ7n-08-R1002	

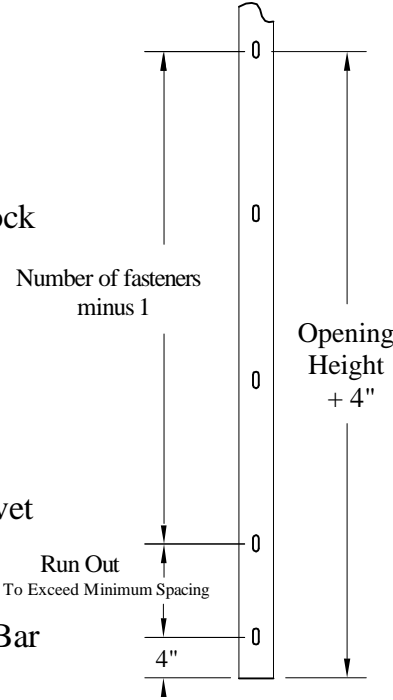


Rivet Diameter: 1/4"  
 Rivet Body: Steel  
 Rivet Mandrel: Steel

Rivet

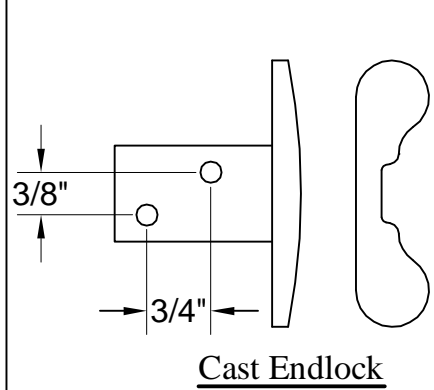


Note:  
 Construction of the door above the header is not part of the windload design and not detailed on this drawing.

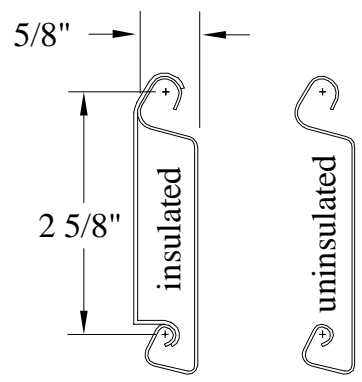


Opening Height	Quantity of Jamb Fasteners				
	steel	bolt through	2000psi concrete Simpson	2000psi filledCMU 5/8 Hilti	2000psi filledCMU 3/8 Hilti
8'-0"	3	5	5	7	10
9'-0"	4	5	5	7	11
10'-0"	4	5	5	8	12
11'-0"	4	6	6	9	13
12'-0"	4	6	6	9	15
13'-0"	5	7	7	10	16
14'-0"	5	7	7	11	17
15'-0"	5	7	7	12	19
16'-0"	5	8	8	12	20
17'-0"	6	8	8	13	21
18'-0"	6	9	9	14	22
20'-0"	6	9	9	15	24
22'-0"	7	10	10	17	26
24'-0"	7	11	11	18	28
Spacing not to exceed	48"	30"	30"	17"	11"

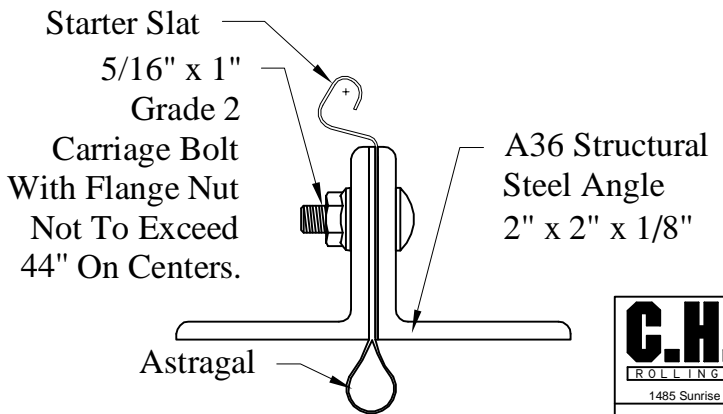
John E. Scates, P.E.  
 3121 Fairgate Drive  
 Carrollton, Texas 75007  
 TX P.E. # 56308 F-2203



Cast Endlock



Steel Slat Thickness  
 .024/.024 insulated  
 .028 uninsulated



Date: 8-31-2015  
 Models: 6202, 6222, 6242, 6181, 6201, 6221, 6266

8'-04" wide +34.7/-43.1psf

C.H.I. Drawing: TZ7n-08-R1002

Professional Engineer's seal provided only for verification of windload construction details