

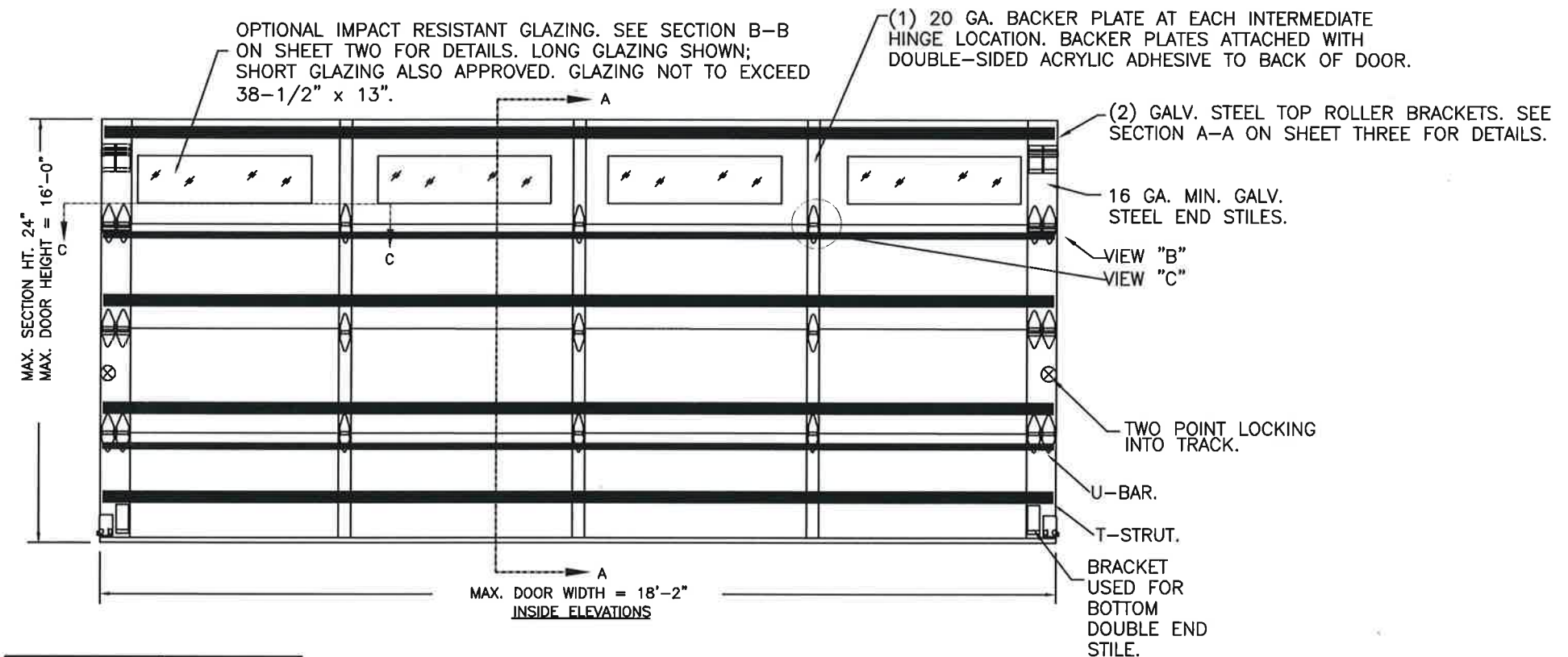
MODELS	SHORT	LONG
CLOPAY GALLERY	GD2SU, GR2SU	GD2LU, GR2LU
HOLMES ARTISTRY IDEAL EXPRESSIONS	AR2SU	AR2LU
	ED2SU	ED2LU

MODELS	FLUSH
CLOPAY CLASSIC	9202, HDPC20
HOLMES CLASSIC	7202
IDEAL CLASSIC	8202, MFC68U

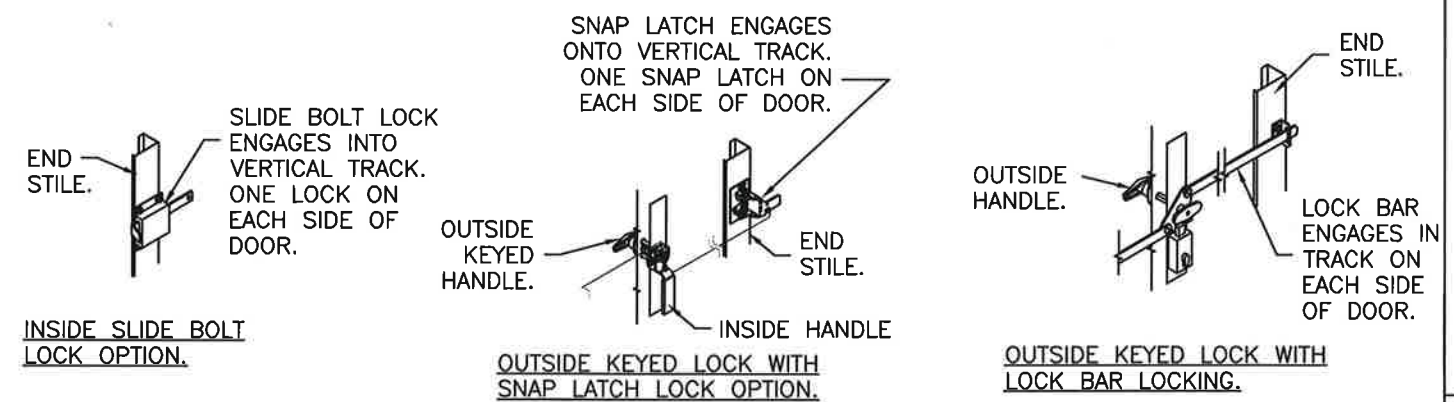
SHEET:  
1 OF 4

REVISIONS					
REV. NO.	ZONE	DATE	ECN NO.	APPVD:	DESCRIPTION
03	-	08/2016	-	SH	REMOVED WIND SPEED TABLE.
04	-	9/29/20	-	SH	UPDATED TITLE BLOCK AND ADDED IBC/IRC COMPLIANCE STATEMENT.

THIS PRODUCT COMPLIES WITH THE 2018 IBC/IRC.



DOOR HEIGHT	# OF SECTIONS
UP TO 8'0"	4
8'3" TO 10'0"	5
10'3" TO 12'0"	6
12'3" TO 14'0"	7
14'3" TO 16'0"	8
MAX SECTION HEIGHT: 24"	



DESIGN ENGINEER:  
MARK WESTERFIELD, P.E.  
FLORIDA: P.E. #48495, NC P.E. #23832, TEXAS P.E. #91513

DESIGN LOADS: +38.0 P.S.F. & -42.0 P.S.F.  
TEST LOADS: +57.0 P.S.F. & -63.0 P.S.F.

Unless Stated Otherwise  
TOLERANCES are  
.0 = ±.031  
.00 = ±.015  
.000 = ±.005  
.0000 = ±.001  
Degrees = ±1/2"

Unless Stated Otherwise  
DIMENSIONS ARE IN INCHES.

**Glopay** CORPORATION  
8585 Duke Boulevard  
Mason, OH 45040 USA  
Tel. No. 513-770-4800  
Fax No. 513-770-4853

MANUFACTURING PRODUCT CODE  
DSIU-1F471  
PART NO.: N/A

WINDLOAD RATING  
W6 DP38T

DESCRIPTION: 2" GALLERY PUR DOORS 18'2"W (SEE TABLE)

DRAWN BY: SH	DATE: 1/10/13	SCALE: NTS	DWG. SIZE B
CHECKED BY: SH	DATE: 1/10/13	SHEET 1 OF 4	
DWG. NO.: 104821		VER: TDI	

MODELS	SHORT	LONG
CLOPAY GALLERY	GD2SU, GR2SU	GD2LU, GR2LU
HOLMES ARTISTRY	AR2SU	AR2LU
IDEAL EXPRESSIONS	ED2SU	ED2LU

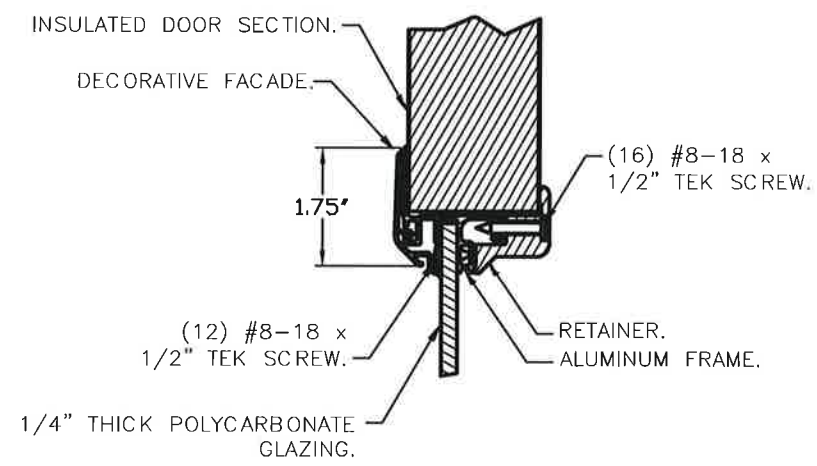
MODELS	FLUSH
CLOPAY CLASSIC	9202, HDPC20
HOLMES CLASSIC	7202
IDEAL CLASSIC	8202, MFC68U

SHEET:  
2 OF 4

REVISIONS					
REV. NO.	ZONE:	DATE:	ECN NO.	APPVD:	DESCRIPTION
04	-	-	-	-	SEE REVISION HISTORY ON SHEET ONE.

**IMPACT-RESISTANT CONSTRUCTION:**  
 SOLID DOORS (NO GLAZING) OR DOORS WITH OPTIONAL IMPACT-RESISTANT GLAZING ARE IMPACT-RESISTANT. OPTIONAL IMPACT RESISTANT ASSEMBLY CONSISTS OF ALUMINUM FRONT FRAME GE LEXAN MR10, AN APPROVED CC1 PLASTIC IN ACCORDANCE WITH IBC/FBC 2606.  
 THE ENTIRE DOOR ASSEMBLY INSTALLED IN COMPLIANCE WITH THIS SECTION MEETS THE WIND LOAD REQUIREMENTS OF THE FLORIDA BUILDING CODE AND INTERNATIONAL BUILDING CODE AND IS LARGE- AND SMALL-MISSILE IMPACT RESISTANT.

SECTION B-B (IMPACT-RESISTANT GLAZING OPTION)



DESIGN ENGINEER  
 MARK WESTERFIELD, P.E.  
 FLORIDA P.E. #48495, NC P.E. #23832, TEXAS P.E. #91513

DESIGN LOADS: +38.0 P.S.F. & -42.0 P.S.F.  
 TEST LOADS: +57.0 P.S.F. & -63.0 P.S.F.

Unless Stated Otherwise  
 TOLERANCES are  
 .0 = ±.031  
 .00 = ±.015  
 .000 = ±.005  
 .0000 = ±.001  
 Degrees = ±1/2'  
 Unless Stated Otherwise  
 DIMENSIONS ARE IN INCHES.

**Clopay**  
 CORPORATION  
 8585 Duke Boulevard  
 Mason, OH 45040 USA  
 Tel. No. 513-770-4800  
 Fax No. 513-770-4853

MANUFACTURING PRODUCT CODE  
 DSIU-1F471

PART NO.: N/A

WINDLOAD RATING  
 W6 DP38T

DESCRIPTION: 2" GALLERY PUR DOORS 18'2"W (SEE TABLE)

DRAWN BY: SH	DATE: 1/10/13	SCALE: NTS	DWG. SIZE B
CHECKED BY: SH	DATE: 1/10/13	SHEET 2 OF 4	

DWG. NO.: 104821	VER: TDI
------------------	----------

MODELS	SHORT	LONG
CLOPAY GALLERY	GD2SU, GR2SU	GD2LU, GR2LU
HOLMES ARTISTRY	AR2SU	AR2LU
IDEAL EXPRESSIONS	ED2SU	ED2LU

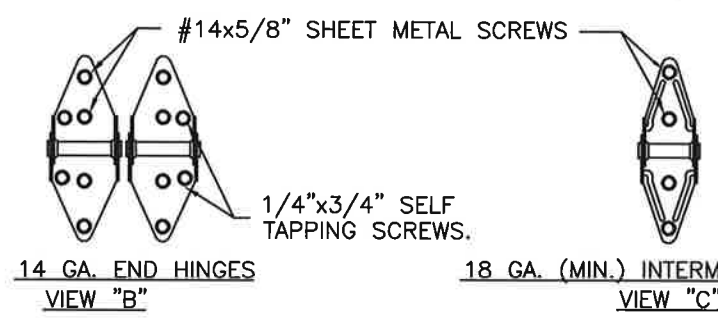
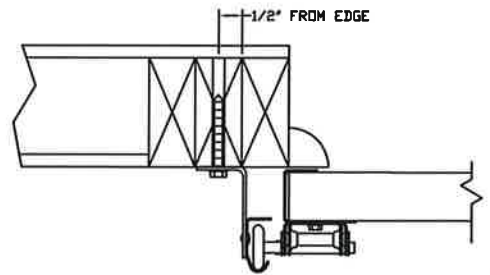
MODELS	FLUSH
CLOPAY CLASSIC	9202, HDPC20
HOLMES CLASSIC	7202
IDEAL CLASSIC	8202, MFC68U

SHEET:  
3 OF 4

REVISIONS					
REV. NO.	ZONE	DATE	ECN NO.	APPVD:	DESCRIPTION
04	-	-	-	-	SEE REVISION HISTORY ON SHEET ONE.

IN THE CASE OF GYPSUM WALLBOARD LOCATED AT OR NEAR THE DOOR OPENING LOCATION THERE ARE TWO ACCEPTABLE ALTERNATIVES:

- 1) THE WALLBOARD CAN BE CUT AWAY FROM THE DOOR OPENING AND 2X6 SOUTHERN YELLOW PINE WOOD JAMBS MOUNTED DIRECTLY TO THE SUPPORTING STRUCTURE TO CREATE THE MOUNTING SURFACE. ALTERNATIVELY, THE BRACKETS MAY BE ATTACHED DIRECTLY TO THE SUPPORTING STRUCTURE. SEE DETAIL BELOW. THE CENTER OF SCREW HOLE MUST BE AT LEAST 1/2" FROM BOTH EDGES FOR A 5/16" LAG SCREW.
- 2) IF THE WALLBOARD IS NOT CUT AWAY TO EXPOSE THE UNDERLYING STRUCTURE (WOOD FRAMING MEMBERS), A 2X6 SOUTHERN YELLOW PINE WOOD BUCK OVER SHALL BE INSTALLED THE WALLBOARD FRAMING THE OPENING USING THE JAMB ATTACHMENT FASTENERS LISTED BELOW. HOWEVER, THE JAMB ATTACHMENT FASTENERS MUST BE OF A SUFFICIENT INCREASED LENGTH TO ACCOUNT FOR THE THICKNESS OF THE WALLBOARD TO ENSURE PROPER FASTENER EMBEDMENT INTO THE STRUCTURAL FRAMING MEMBERS OF THE SUPPORTING STRUCTURE.



PREPARATION OF JAMBS BY OTHERS.

VERTICAL JAMB ATTACHMENT (WOOD FRAME BUILDINGS):

3/8"x3" LAG SCREWS ON 19" CENTERS. 1-1/8" O.D. WASHER REQUIRED. LAG SCREWS MAY BE COUNTERSUNK (BUT NOT REQUIRED) TO PROVIDE A FLUSH MOUNTING SURFACE. HORIZONTAL JAMBS DO NOT TRANSFER LOAD.

VERTICAL JAMB ATTACHMENT (C-90 BLOCK OR 2,000 PSI MIN. CONCRETE COLUMN):

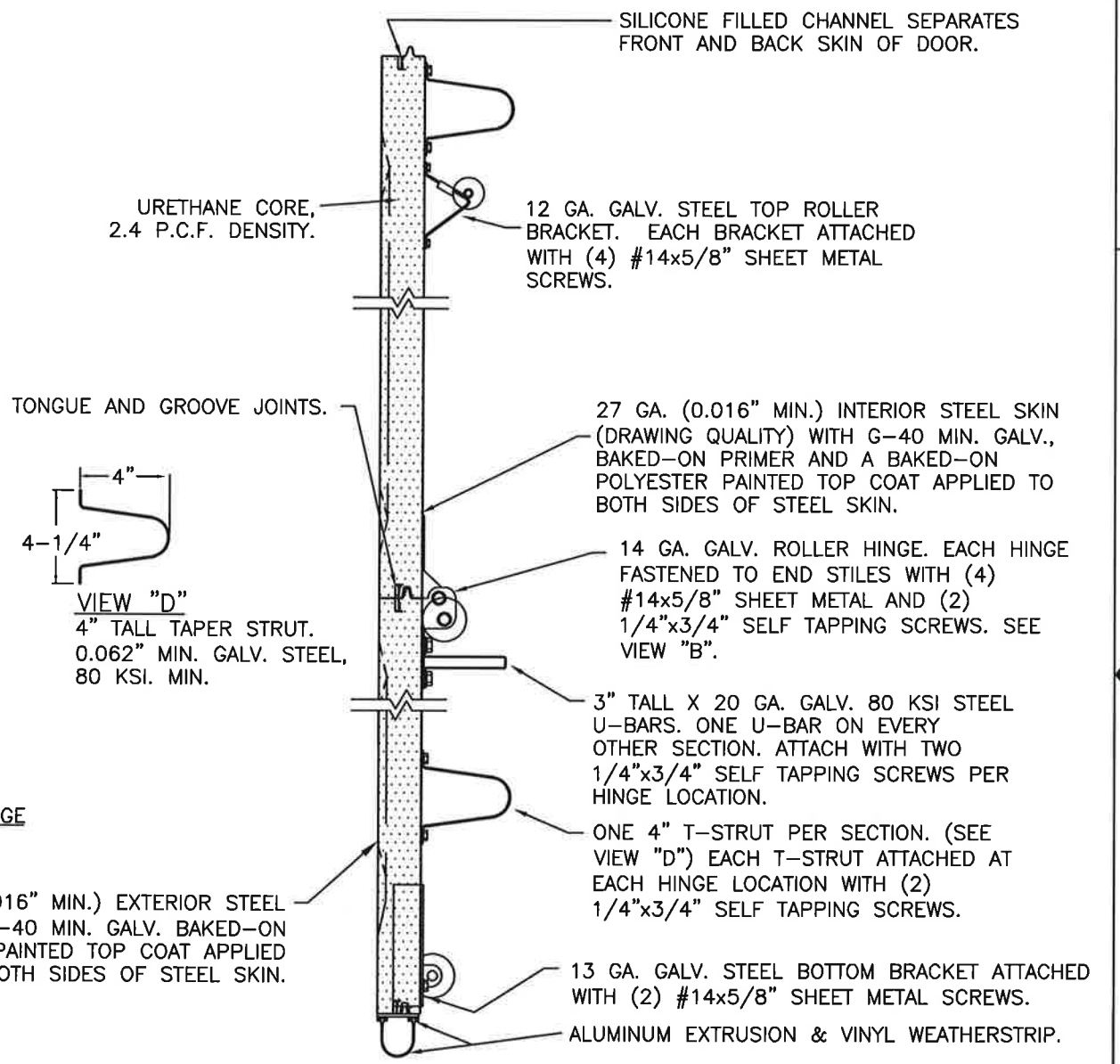
3/8"x3" SLEEVE ANCHOR BOLTS ON 11" CENTERS (2,000 PSI MIN. CONCRETE). WASHERS INCLUDED WITH SLEEVE ANCHORS.

OR  
1/4"x3" TAPCON SCREWS ON 9" CENTERS (2,000 PSI MIN. CONCRETE) OR 5" CENTERS (C-90 BLOCK), 1" O.D. WASHERS REQUIRED WITH TAPCONS.

ANCHORS MAY BE COUNTERSUNK (BUT NOT REQUIRED) TO PROVIDE A FLUSH MOUNTING SURFACE. HORIZONTAL JAMBS DO NOT TRANSFER LOAD.

OTHER JAMB CONFIGURATIONS: REFER TO DASMA TDS-161. A LICENSED DESIGN PROFESSIONAL MAY ALSO BE EMPLOYED TO APPROVE ALTERNATE FASTENERS AND/OR JAMB CONFIGURATIONS.

DESIGN ENGINEER:  
MARK WESTERFIELD, P.E.  
FLORIDA P.E. #48495, NC P.E. #23832, TEXAS P.E. #91513



SECTION A-A (SIDE VIEW)

DESIGN LOADS: +38.0 P.S.F. & -42.0 P.S.F.  
TEST LOADS: +57.0 P.S.F. & -63.0 P.S.F.

Unless Stated Otherwise TOLERANCES are

.0	= ±.031
.00	= ±.015
.000	= ±.005
.0000	= ±.001
Degrees	= ±1/2'

**Glopay** CORPORATION  
8585 Duke Boulevard  
Mason, OH 45040 USA  
Tel. No. 513-770-4800  
Fax No. 513-770-4853

DESCRIPTION: 2" GALLERY PUR DOORS 18'2"W (SEE TABLE)

DRAWN BY: SH	DATE: 1/10/13	SCALE: NTS	DWG. SIZE: B
CHECKED BY: SH	DATE: 1/10/13	SHEET 3 OF 4	

DWG. NO.: 104821 VER: TDI

MANUFACTURING PRODUCT CODE  
DSIU-1F471

PART NO.: N/A

WINDLOAD RATING  
W6 DP38T

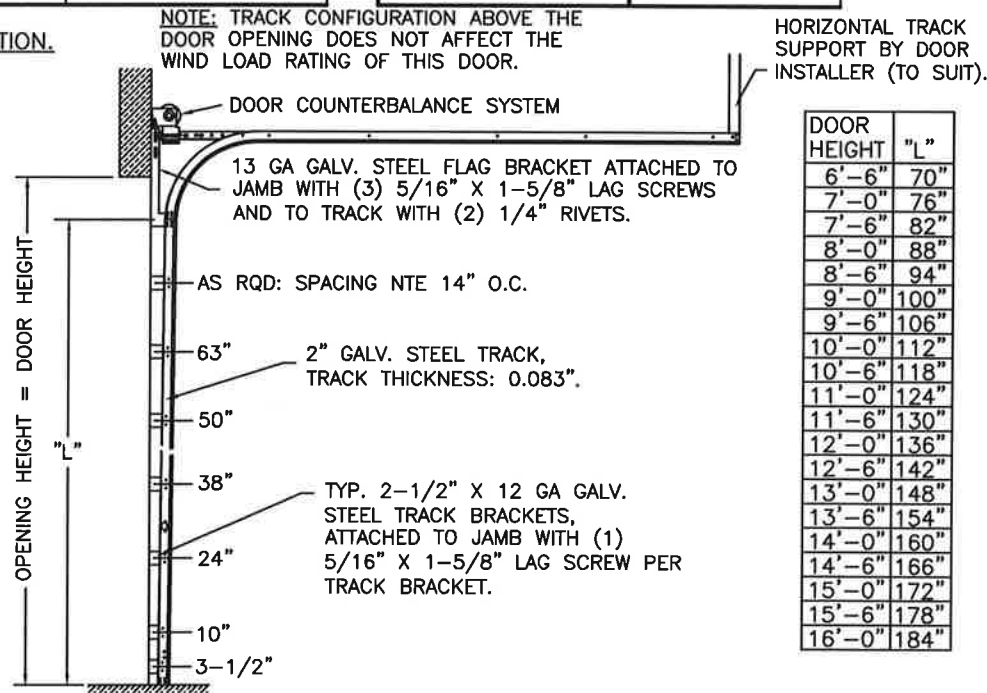
MODELS	SHORT	LONG
CLOPAY GALLERY	GD2SU, GR2SU	GD2LU, GR2LU
HOLMES ARTISTRY	AR2SU	AR2LU
IDEAL EXPRESSIONS	ED2SU	ED2LU

MODELS	FLUSH
CLOPAY CLASSIC	9202, HDPC20
HOLMES CLASSIC	7202
IDEAL CLASSIC	8202, MFC68U

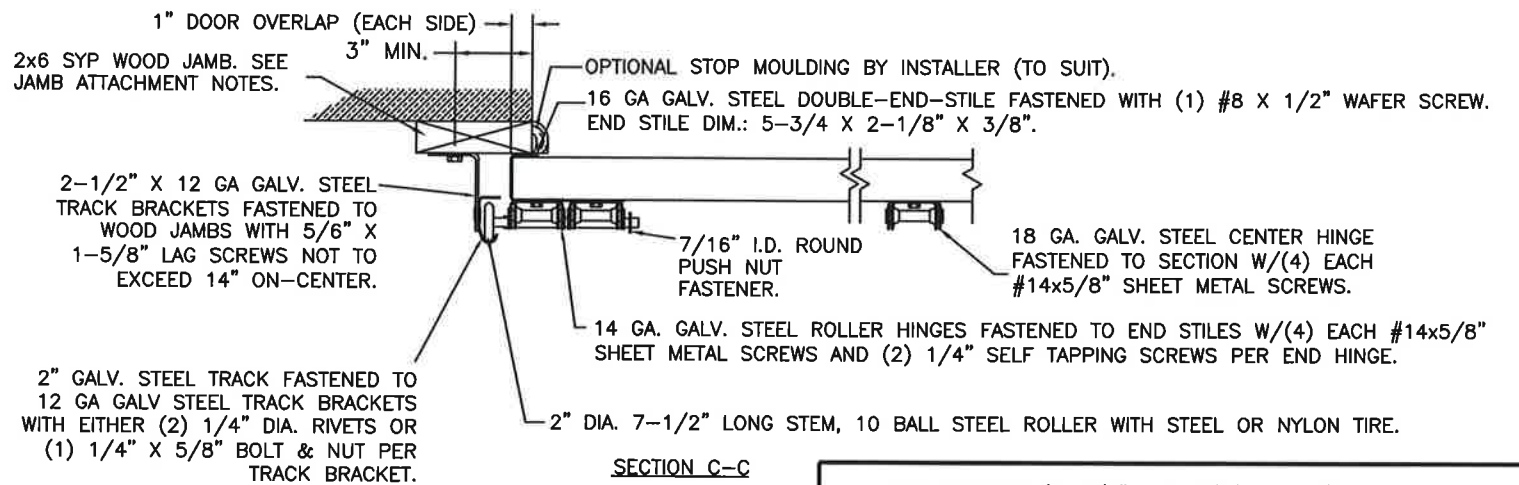
SHEET:  
4 OF 4

REVISIONS						DESCRIPTION
REV. NO.	ZONE	DATE	ECN NO.	APPVD:		
04	-	-	-	-		SEE REVISION HISTORY ON SHEET ONE.

**2" TRACK CONFIGURATION.**



**2" JAMB CONFIGURATION.**



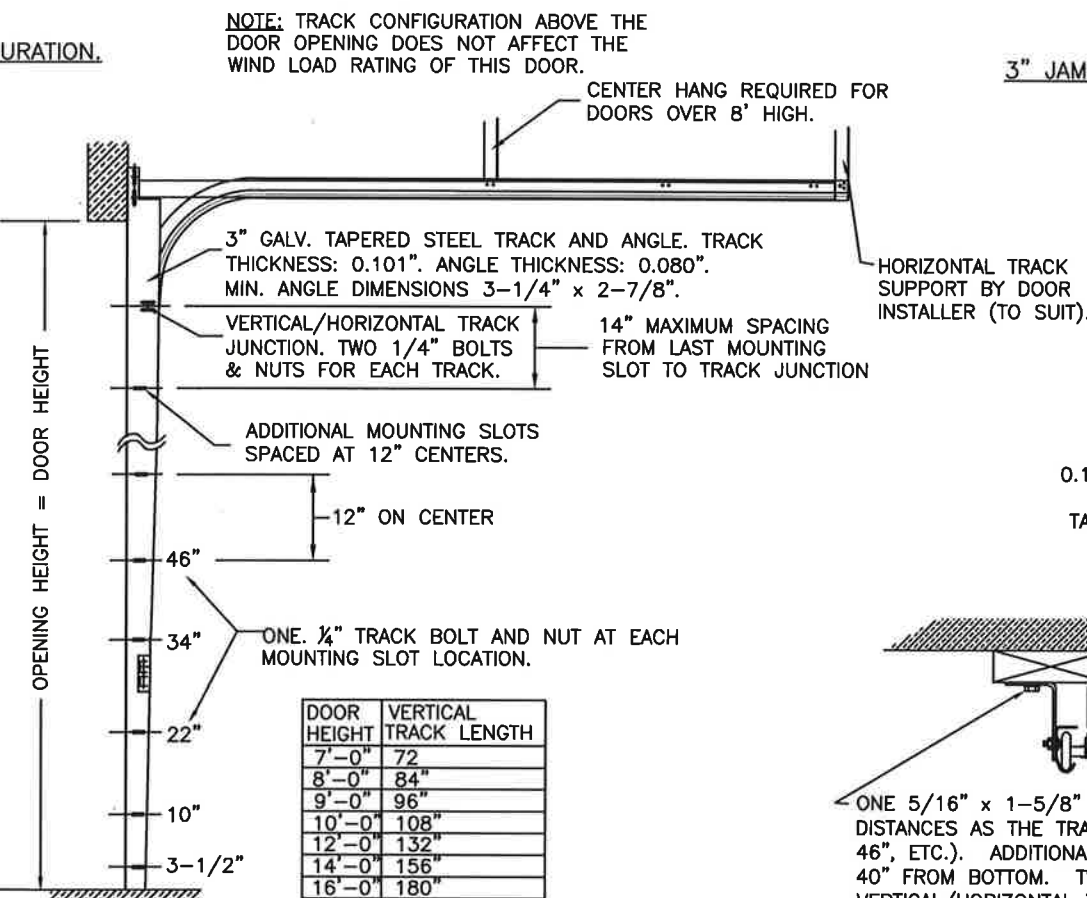
**PREPARATION OF JAMBS BY OTHERS.**

LHR BRACKET (2-1/2" x 5-3/4" x 12GA) ATTACHED WITH (2) 1/4" x 3/4" SELF TAPPING SCREWS. NOTE THAT LHR BRACKETS ARE ALSO USED WITH "DOUBLE END STILE" AS SHOWN IN ZONE B-3 SHEET 1.

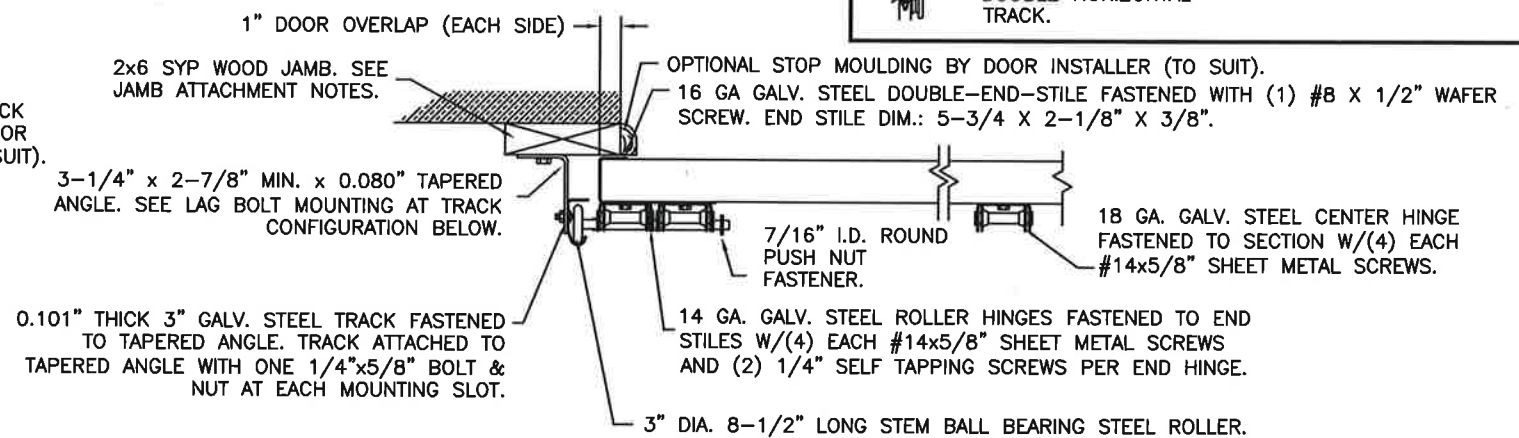
DOUBLE TRACK LOW HEADROOM OPTION (AVAIL. FOR BOTH 2" AND 3" TRACK)



**3" TRACK CONFIGURATION.**



**3" JAMB CONFIGURATION.**



**PREPARATION OF JAMBS BY OTHERS.**

DESIGN LOADS: +38.0 P.S.F. & -42.0 P.S.F.  
TEST LOADS: +57.0 P.S.F. & -63.0 P.S.F.

Unless Stated Otherwise TOLERANCES are  
.0 = ±.031  
.00 = ±.015  
.000 = ±.005  
.0000 = ±.001  
Degrees = ±1/2'

Unless Stated Otherwise DIMENSIONS ARE IN INCHES.

**Glopay CORPORATION**  
8585 Duke Boulevard  
Mason, OH 45040 USA  
Tel. No. 513-770-4800  
Fax No. 513-770-4853

MANUFACTURING PRODUCT CODE  
DSIU-1F471

PART NO.: N/A

WINDLOAD RATING  
W6 DP38T

DESCRIPTION: 2" GALLERY PUR DOORS 18'2"W (SEE TABLE)			
DRAWN BY: SH	DATE: 1/10/13	SCALE: NTS	DWG. SIZE B
CHECKED BY: SH	DATE: 1/10/13	SHEET 4 OF 4	
DWG. NO.: 104821		VER: TDI	



DESIGN ENGINEER:  
MARK WESTFIELD, P.E.  
FLORIDA P.E. #48495, NC P.E. #23832, TEXAS P.E. #91513