

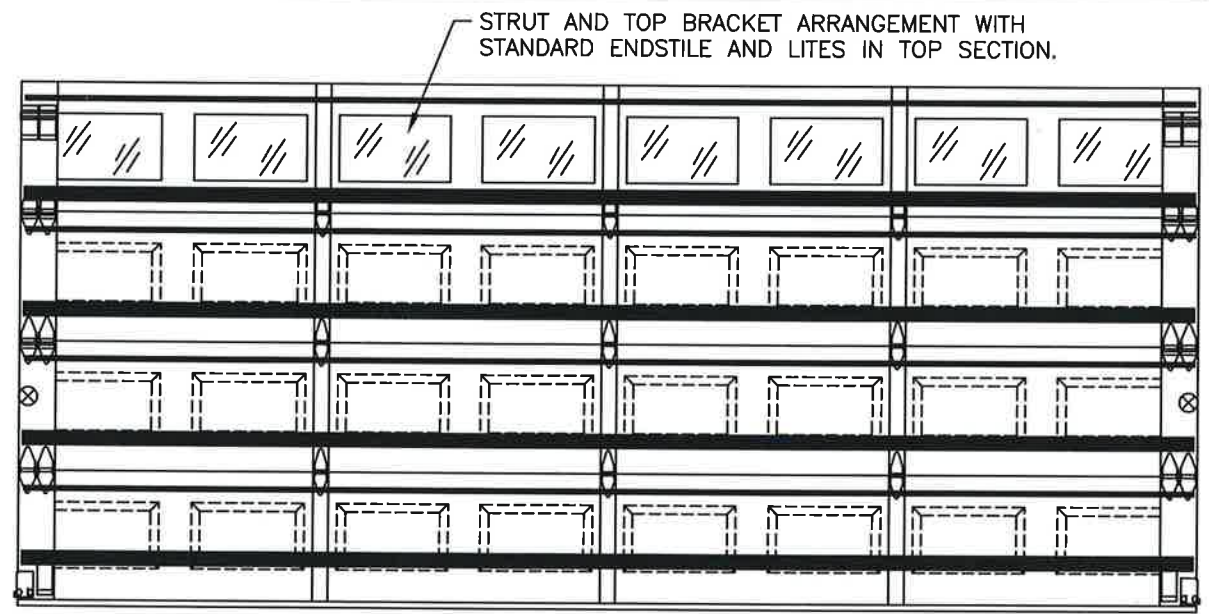
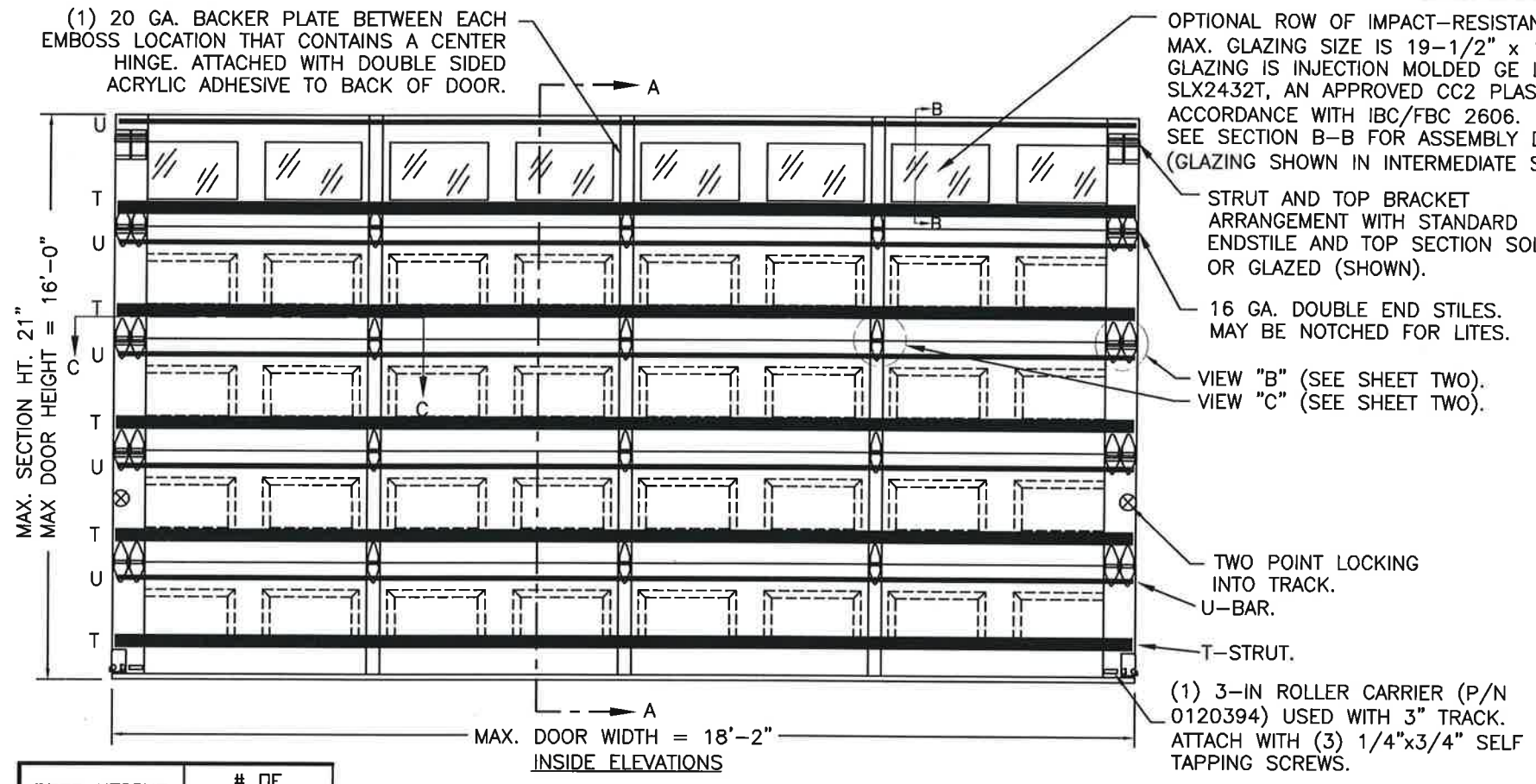
BRAND	EMBOSS TYPE		
	SHORT	LONG	FLUSH
CLOPAY	9200, HDP20	9203, HDPL20	9201, HDPF20
IDEAL	8200	8203	8201
HOLMES	7200	7203	7201

SHEET:
1 OF 3

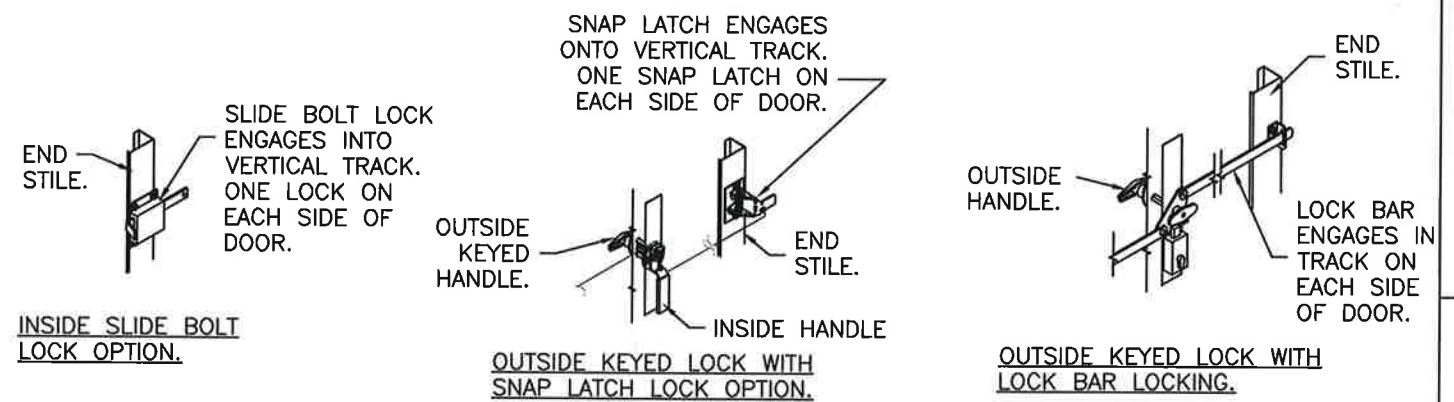
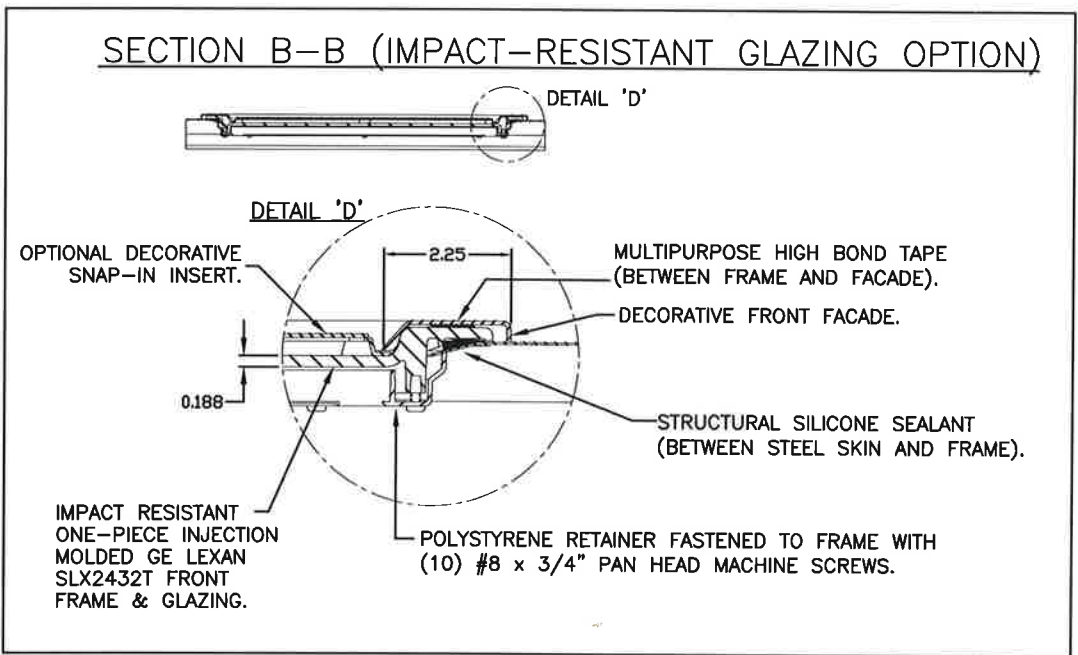
REVISIONS					
REV. NO.	ZONE:	DATE:	ECN NO.	APPVD:	DESCRIPTION
02	-	5/13/14	-	SH	REVISED FOR APPROVAL.
03	-	3/5/20	EN2736	SH	REVISED MAX WINDOW SIZE AND TITLE BLOCK
04	-	9/28/20	-	SH	ADDED IBC/IRC COMPLIANCE STATEMENT.

THIS PRODUCT COMPLIES WITH THE 2018 IBC/IRC.

IMPACT-RESISTANT CONSTRUCTION:
 SOLID DOORS (NO GLAZING) OR DOORS WITH OPTIONAL IMPACT-RESISTANT GLAZING ARE IMPACT-RESISTANT. OPTIONAL MAX WINDOW SIZE 19-1/2"x12" INJECTION-MOLDED POLYCARBONATE FRONT FRAME AND GLAZING IS GE LEXAN SLX2432T, AN APPROVED CC2 PLASTIC IN ACCORDANCE WITH IBC/FBC 2606. THE ENTIRE DOOR ASSEMBLY INSTALLED IN COMPLIANCE WITH THIS SECTION MEETS THE WIND LOAD REQUIREMENTS OF THE FLORIDA BUILDING CODE AND INTERNATIONAL BUILDING CODE AND IS LARGE- AND SMALL-MISSILE IMPACT RESISTANT.



DOOR HEIGHT	# OF SECTIONS
UP TO 7'0"	4
7'3" TO 8'9"	5
9'0" TO 10'6"	6
10'9" TO 12'3"	7
12'6" TO 14'0"	8
14'3" TO 15'9"	9
16'0"	10
MAX SECTION HEIGHT: 21'	



DESIGN ENGINEER:
 MARK WESTERFIELD, P.E.
 FLORIDA P.E. #48495, NC P.E. #23832, TEXAS P.E. #91513

DESIGN LOADS: +46.0 P.S.F. & -50.0 P.S.F.
 TEST LOADS: +69.0 P.S.F. & -75.0 P.S.F.

Unless Stated Otherwise TOLERANCES are

.0	= ±.031
.00	= ±.015
.000	= ±.005
.0000	= ±.001
Degrees	= ±1/2°

Unless Stated Otherwise DIMENSIONS ARE IN INCHES.

Clopay CORPORATION
 8585 Duke Boulevard
 Mason, OH 45040 USA
 Tel. No. 513-770-4800
 Fax No. 513-770-4853

MANUFACTURING PRODUCT CODE
 DSIU-1F171

PART NO.: N/A

WINDLOAD RATING
W8 DP46

DESCRIPTION: 2" PUR INS. DOORS TO 18'2" (SEE TABLE FOR MODELS)	SCALE: NTS	DWG. SIZE: B
DRAWN BY: SH	DATE: 11/8/12	SHEET 1 OF 3
CHECKED BY: SH	DATE: 11/9/12	VER: TDI
DWG. NO.: 104779		

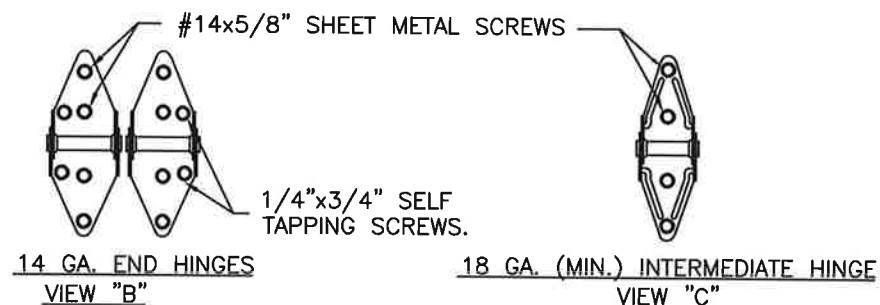
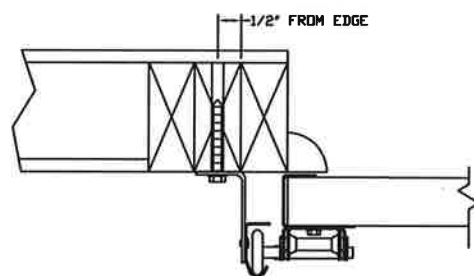
BRAND	EMBOSS TYPE		
	SHORT	LONG	FLUSH
CLOPAY	9200, HDP20	9203, HDPL20	9201, HDPF20
IDEAL	8200	8203	8201
HOLMES	7200	7203	7201

SHEET:
2 OF 3

REVISIONS					
REV. NO.	ZONE	DATE	ECN NO.	APPVD:	DESCRIPTION
04	-	-	-	-	SEE REVISION HISTORY ON SHEET ONE.

IN THE CASE OF GYPSUM WALLBOARD LOCATED AT OR NEAR THE DOOR OPENING LOCATION THERE ARE TWO ACCEPTABLE ALTERNATIVES:

- 1) THE WALLBOARD CAN BE CUT AWAY FROM THE DOOR OPENING AND 2X6 SOUTHERN YELLOW PINE WOOD JAMBS MOUNTED DIRECTLY TO THE SUPPORTING STRUCTURE TO CREATE THE MOUNTING SURFACE. ALTERNATIVELY, THE BRACKETS MAY BE ATTACHED DIRECTLY TO THE SUPPORTING STRUCTURE. SEE DETAIL BELOW. THE CENTER OF SCREW HOLE MUST BE AT LEAST 1/2" FROM BOTH EDGES FOR A 5/16" LAG SCREW.
- 2) IF THE WALLBOARD IS NOT CUT AWAY TO EXPOSE THE UNDERLYING STRUCTURE (WOOD FRAMING MEMBERS), A 2X6 SOUTHERN YELLOW PINE WOOD BUCK OVER SHALL BE INSTALLED THE WALLBOARD FRAMING THE OPENING USING THE JAMB ATTACHMENT FASTENERS LISTED BELOW. HOWEVER, THE JAMB ATTACHMENT FASTENERS MUST BE OF A SUFFICIENT INCREASED LENGTH TO ACCOUNT FOR THE THICKNESS OF THE WALLBOARD TO ENSURE PROPER FASTENER EMBEDMENT INTO THE STRUCTURAL FRAMING MEMBERS OF THE SUPPORTING STRUCTURE.



PREPARATION OF JAMBS BY OTHERS.

VERTICAL JAMB ATTACHMENT (WOOD FRAME BUILDINGS):

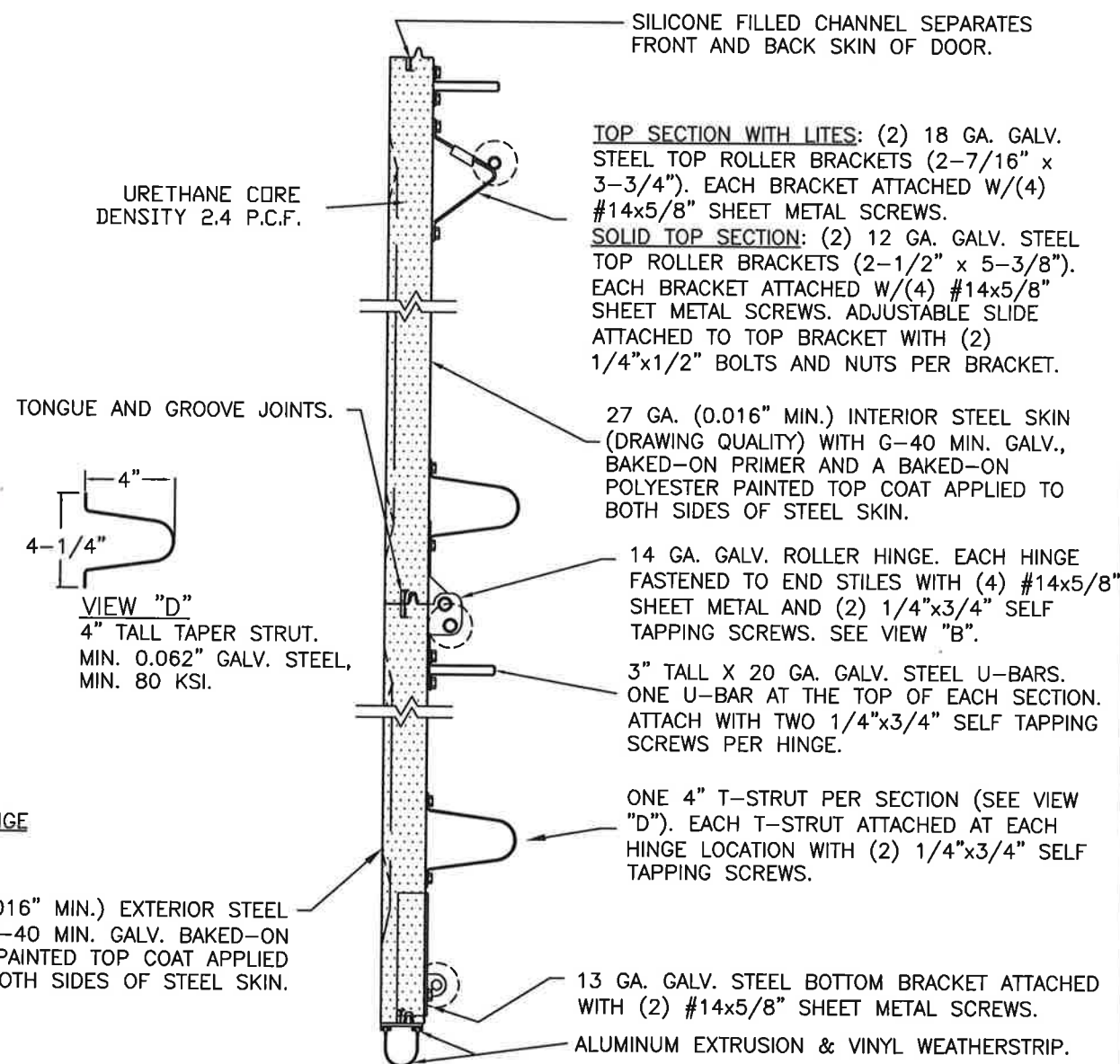
3/8"x3" LAG SCREWS ON 17" CENTERS. 1-1/8" O.D. WASHER REQUIRED. LAG SCREWS MAY BE COUNTERSUNK (BUT NOT REQUIRED) TO PROVIDE A FLUSH MOUNTING SURFACE. HORIZONTAL JAMBS DO NOT TRANSFER LOAD.

VERTICAL JAMB ATTACHMENT (C-90 BLOCK OR 2,000 PSI MIN. CONCRETE COLUMN):

3/8"x3" SLEEVE ANCHOR BOLTS ON 10" CENTERS (2,000 PSI MIN. CONCRETE). WASHERS INCLUDED WITH SLEEVE ANCHORS.
OR
1/4"x3" TAPCON SCREWS ON 8" CENTERS (2,000 PSI MIN. CONCRETE) OR 5" CENTERS (C-90 BLOCK), 1" O.D. WASHERS REQUIRED WITH TAPCONS.
ANCHORS MAY BE COUNTERSUNK (BUT NOT REQUIRED) TO PROVIDE A FLUSH MOUNTING SURFACE. HORIZONTAL JAMBS DO NOT TRANSFER LOAD.

OTHER JAMB CONFIGURATIONS: REFER TO DASMA TDS-161. A LICENSED DESIGN PROFESSIONAL MAY ALSO BE EMPLOYED TO APPROVE ALTERNATE FASTENERS AND/OR JAMB CONFIGURATIONS.

DESIGN ENGINEER
MARK WESTERFIELD, P.E.
FLORIDA P.E. #48495, NC P.E. #23832, TEXAS P.E. #91513



SECTION A-A (SIDE VIEW)

DESIGN LOADS: +46.0 P.S.F. & -50.0 P.S.F.
TEST LOADS: +69.0 P.S.F. & -75.0 P.S.F.

Unless Stated Otherwise TOLERANCES are

.0	= ±.031
.00	= ±.015
.000	= ±.005
.0000	= ±.001
Degrees	= ±1/2°

Unless Stated Otherwise DIMENSIONS ARE IN INCHES.

Clopay CORPORATION
8585 Duke Boulevard
Mason, OH 45040 USA
Tel. No. 513-770-4800
Fax No. 513-770-4853

MANUFACTURING PRODUCT CODE DSIU-1F171			
PART NO.: N/A			
WINDLOAD RATING W8 DP46			
DESCRIPTION: 2" PUR INS. DOORS TO 18'2" (SEE TABLE FOR MODELS)			
DRAWN BY: SH	DATE: 11/8/12	SCALE: NTS	DWG. SIZE B
CHECKED BY: SH	DATE: 11/9/12	SHEET 2 OF 3	
DWG. NO.: 104779		VER: TDI	

BRAND	EMBOSS TYPE		
	SHORT	LONG	FLUSH
CLOPAY	9200, HDP20	9203, HDPL20	9201, HDPF20
IDEAL	8200	8203	8201
HOLMES	7200	7203	7201

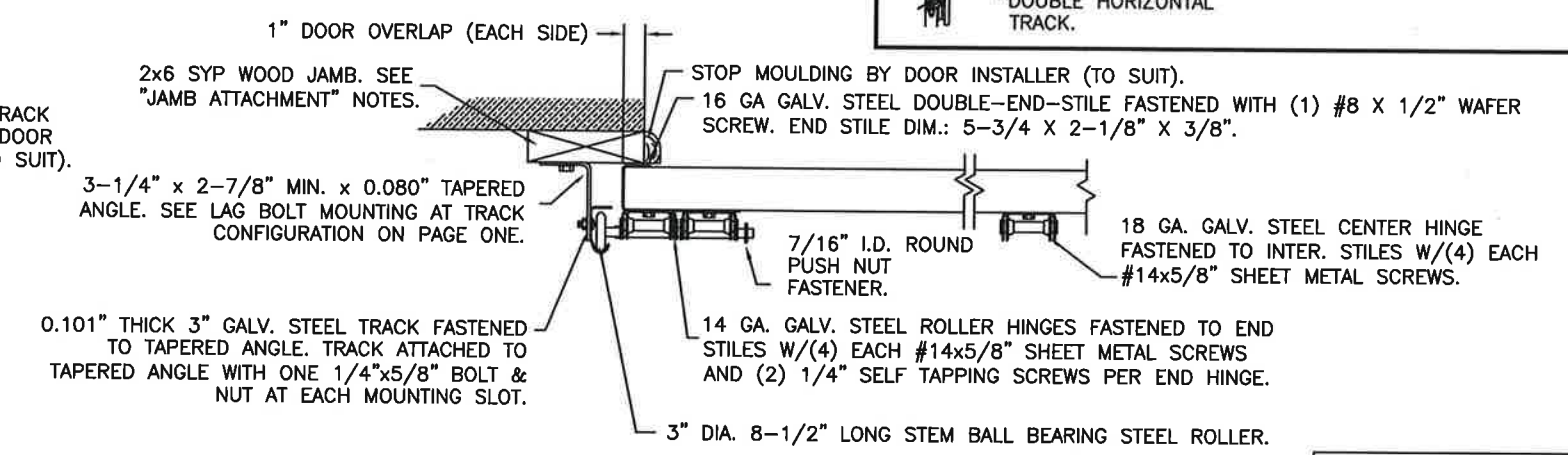
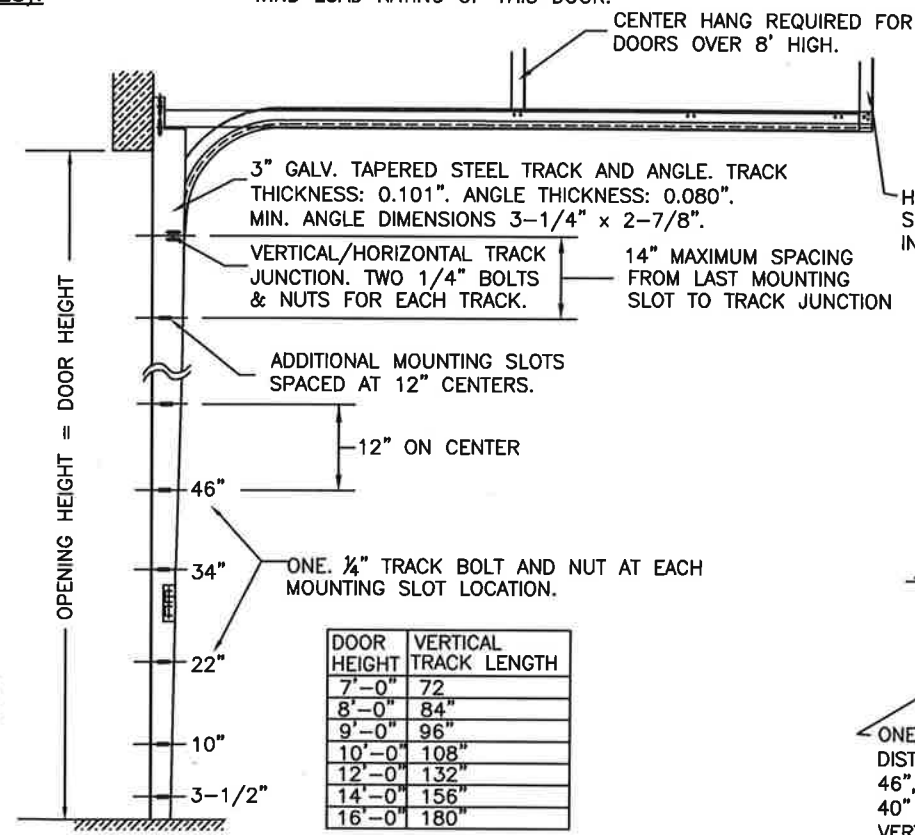
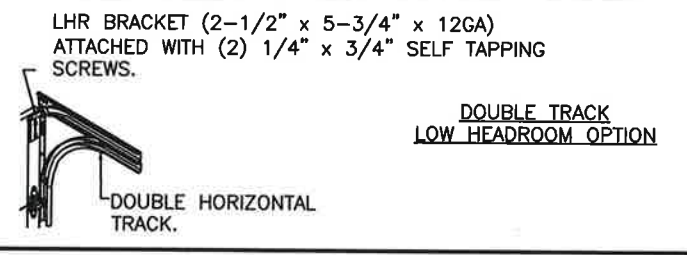
SHEET:
3 OF 3

REVISIONS					
REV. NO.	ZONE:	DATE:	ECN NO.	APPVD:	DESCRIPTION
04	-	-	-	-	SEE REVISION HISTORY ON SHEET ONE.

**3" TRACK CONFIGURATION
(ALL SIZES).**

NOTE: TRACK CONFIGURATION ABOVE THE DOOR OPENING DOES NOT AFFECT THE WIND LOAD RATING OF THIS DOOR.

**JAMB CONFIGURATION
(ALL SIZES).**



**SECTION C-C
PREPARATION OF JAMBS BY OTHERS.**

DESIGN LOADS: +46.0 P.S.F. & -50.0 P.S.F.
TEST LOADS: +69.0 P.S.F. & -75.0 P.S.F.

Unless Stated Otherwise TOLERANCES are

.0	= ±.031
.00	= ±.015
.000	= ±.005
.0000	= ±.001
Degrees	= ±1/2°

Unless Stated Otherwise DIMENSIONS ARE IN INCHES.

Clopay CORPORATION
8585 Duke Boulevard
Mason, OH 45040 USA
Tel. No. 513-770-4800
Fax No. 513-770-4853

MANUFACTURING PRODUCT CODE
DSIU-1F171

PART NO.: N/A

WINDLOAD RATING
W8 DP46

DESCRIPTION: 2" PUR INS. DOORS TO 18'2" (SEE TABLE FOR MODELS)	SCALE: NTS	DWG. SIZE: B
DRAWN BY: SH	DATE: 11/8/12	SHEET 3 OF 3
CHECKED BY: SH	DATE: 11/9/12	VER: TDI
DWG. NO.: 104779		

STATE OF TEXAS
MARK W. WESTERFIELD
10/2/20203
DESIGN ENGINEER
MARK WESTERFIELD, P.E.
FLORIDA P.E. #48495, NC P.E. #23832, TEXAS P.E. #91513