

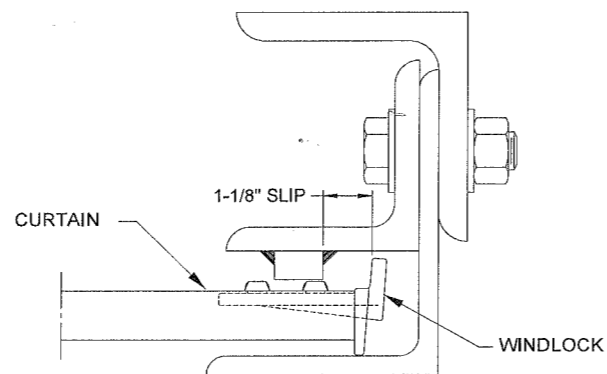
NOTES: (UNLESS OTHERWISE SPECIFIED)

- DESIGNED AND TESTED IN ACCORDANCE FLORIDA BLDG CODE AND INTERNATIONAL BLDG CODE. PROFESSIONAL ENGINEER'S SEAL PROVIDED ONLY FOR VERIFICATION OF WIND LOAD CONSTRUCTION DETAILS.
- WALL ANGLES MAY BE WELDED TO STEEL JAMBS. PLUG WELDS IN THE WALL ANGLE SLOTS THE THICKNESS OF THE ANGLE, OR FILLET WELDS AT THE HEEL AND TOE OF THE WALL ANGLE, 2" LONG AT EACH SPECIFIED BOLT LOCATION, REQUIRED TO HOLD THE LOADS EXERTED ON THE GUIDE.
- STEEL JAMBS MUST BE MINIMUM ASTM A36 5/16" THICK
- RATED DESIGN PRESSURE: ±38 PSF.
- (-W/L) = NEGATIVE WIND LOAD
(+W/L) = POSITIVE WIND LOAD
- WIND LOCKS ATTACHED TO THE END OF EVERY OTHER SLAT (ALTERNATE).
- GUIDE MATERIAL: ASTM A36
CURTAIN MATERIAL: ASTM A-653 CS TYPE B
- THIS DOOR IS CAPABLE OF INTERIOR OR EXTERIOR MOUNTING.

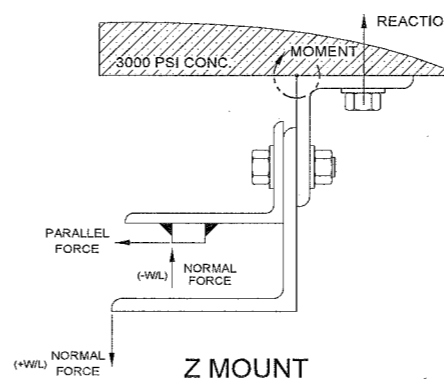
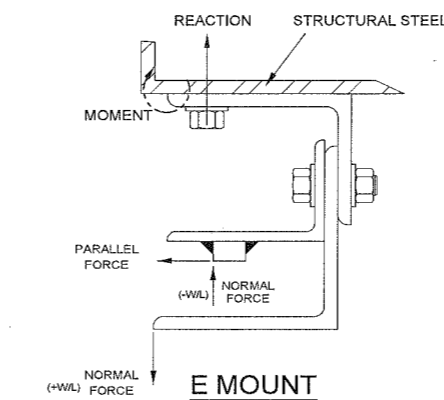
MOUNT	(E-MOUNT) LOADS *	(Z-MOUNT) LOADS *
REACTION	3386	1941
NORMAL	418	418
PARALLEL	1444	1444

* LOADS - PER FOOT OF HEIGHT (LBS)

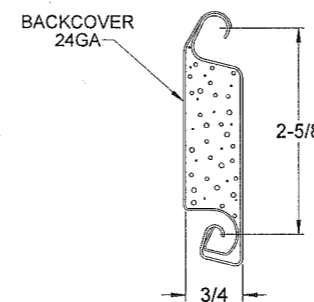
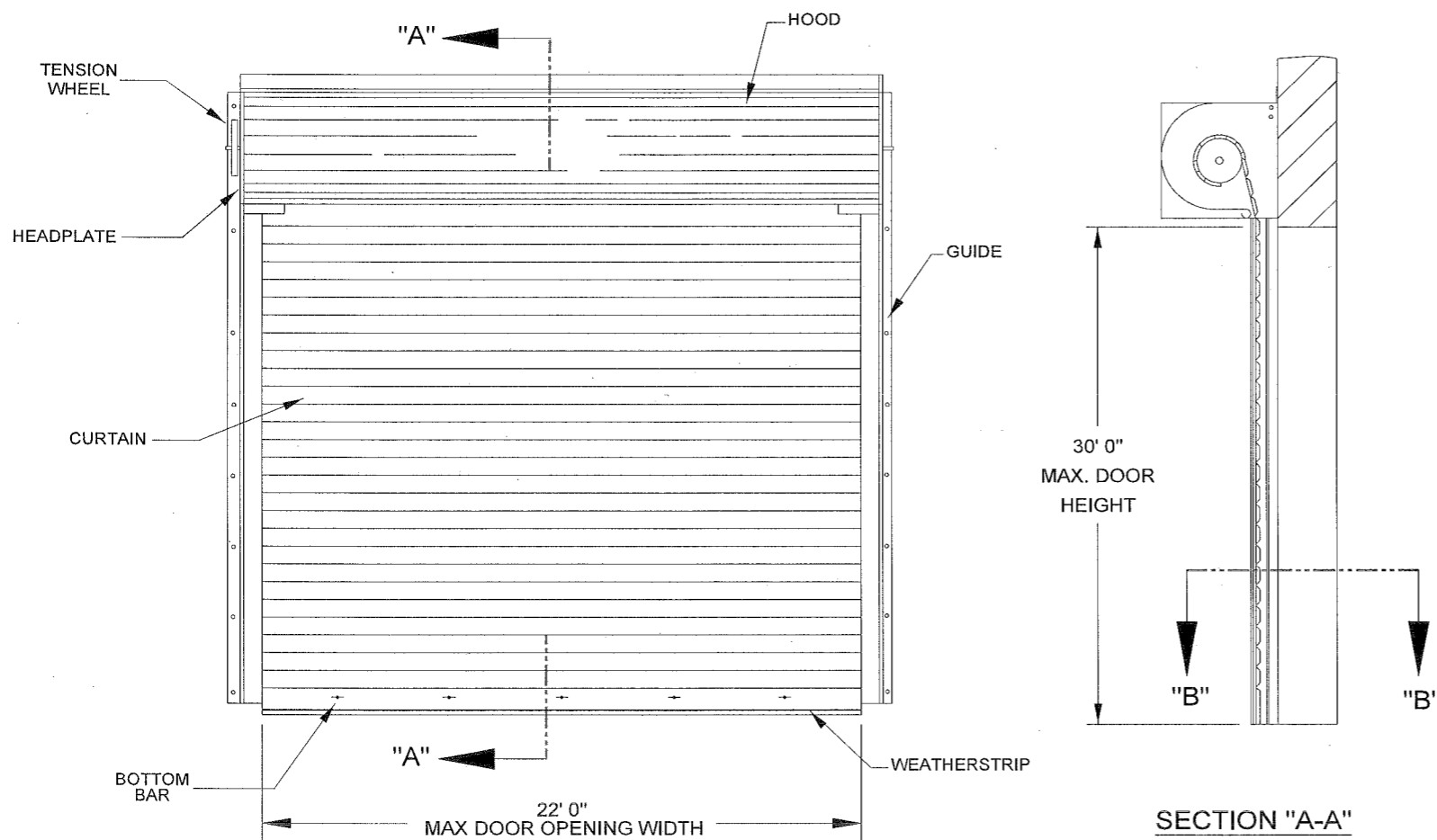
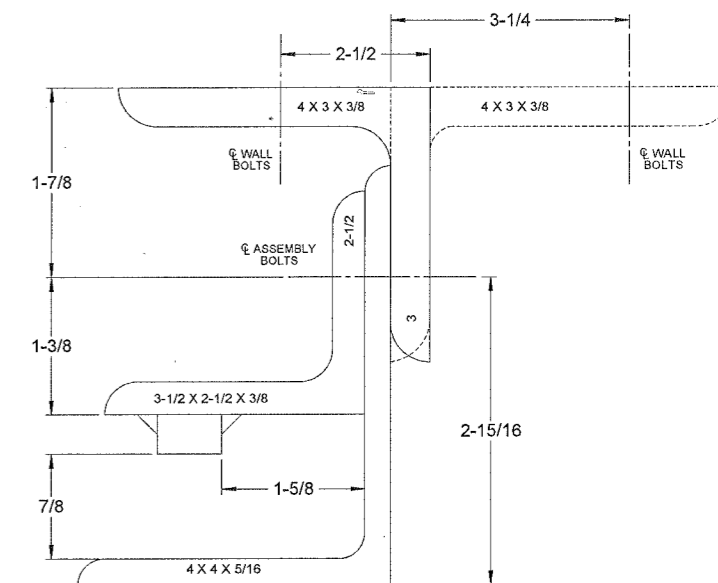
LOAD TABLE



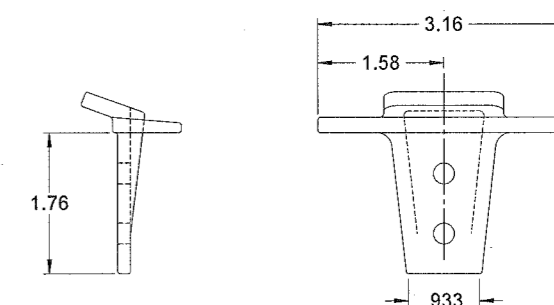
SECTION "B-B"



REVISIONS				
EN	REV	DESCRIPTION	DATE	APVL
502944	REL	RELEASE FOR PRODUCTION	6/2/15	TS



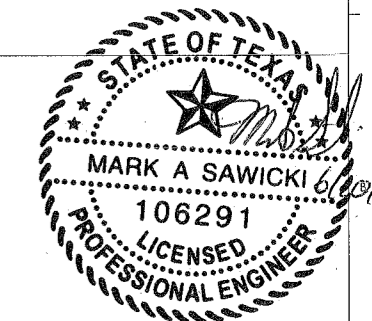
FRONT SLAT GAUGE OPTIONS: 20, 18



SLAT	ASSEMBLY BOLT	WALL BOLT STEEL JAMB	WALL ATTACHMENT CONCRETE JAMB*
FI265	1/2" GRADE 5, 12" O.C.	1/2" GRADE 5, 15" O.C.	1/2" X 3 1/2" EMB HILTI KWIK BOLT 3 8" O.C.

*ANCHORS MUST BE INSTALLED INTO UN-CRACKED, MIN. 3000 PSI, MIN. 8" THICK, NORMAL WEIGHT CONCRETE

HARDWARE DETAIL



OVERHEAD DOOR CORPORATION
2501 SOUTH STATE HWY 121 BUSINESS
LEWISVILLE, TX 75067
MARK A. SAWICKI, TX PE 106291

<p>THE DRAWINGS AND ALL OTHER INFORMATION CONTAINED HEREIN ARE THE CONFIDENTIAL PROPRIETARY PROPERTY OF OVERHEAD DOOR CORPORATION, INCLUDING ITS AFFILIATED SUBSIDIARIES AND AFFILIATES. THIS DRAWING INFORMATION IN WHOLE OR IN PART, MAY NOT BE COPIED IN ANY MANNER OR DISCLOSED TO ANYONE WITHOUT PRIOR WRITTEN CONSENT OF OVERHEAD DOOR CORPORATION. DISCLOSURE OF ANY DRAWING OR INFORMATION IS INTENDED NOT TO AND SHALL NOT OPERATE AS A LICENSE OR AUTHORIZATION TO USE IT FOR ANY PURPOSE WITHOUT SPECIFIC WRITTEN CONSENT OF OVERHEAD DOOR CORPORATION.</p>	<p>UNLESS OTHERWISE SPECIFIED INTERPRET DIMS & TOLS PER ASME Y14.5M</p>		<p>APPROVALS DATE</p>		<p>The Genuine. The Original. OVERHEAD DOOR</p>
	<p>TOLERANCES:</p> <p>.X = ± .1 .XX = ± .03 .XXX = ± .010 ANGULAR = ± .5°</p>		<p>DRAWN M. PORTO 5/22/2014</p>		
	<p>ALL DIMS ARE IN INCHES</p> <p>DO NOT SCALE</p>		<p>CHECKED G. FINERAN 5/29/14</p>		
	<p>DO NOT SCALE</p>		<p>APPROVED M. SAWICKI 5/29/14</p>		
<p>HOLES:</p> <p>< Ø .251 = +.004/- .003 Ø .251-Ø .500 = +.006/- .003 > Ø .500 = +.008/- .003</p>		<p>FINISH N/A</p>		<p>DESCRIPTION MODEL 625/626, ROLLING SERVICE DOOR, 22' TDI, 38PSF</p>	
<p>ALL GEOMETRY GOVERNED BY 3D CAD DATABASE:</p>		<p>SCALE 1:1 UOM: IN.</p>		<p>SIZE DWG NO. D 308739</p>	

REV REL

SHEET 1 OF 1