

MODELS	SHORT	LONG	MODELS	FLUSH
CLOPAY GALLERY	GD2SP, GR2SP	GD2LP, GR2LP	CLOPAY CLASSIC	4302
HOLMES ARTISTRY	AR2SP	AR2LP	HOLMES CLASSIC	6202
IDEAL EXPRESSIONS	ED2SP	ED2LP	IDEAL CLASSIC	SFC68

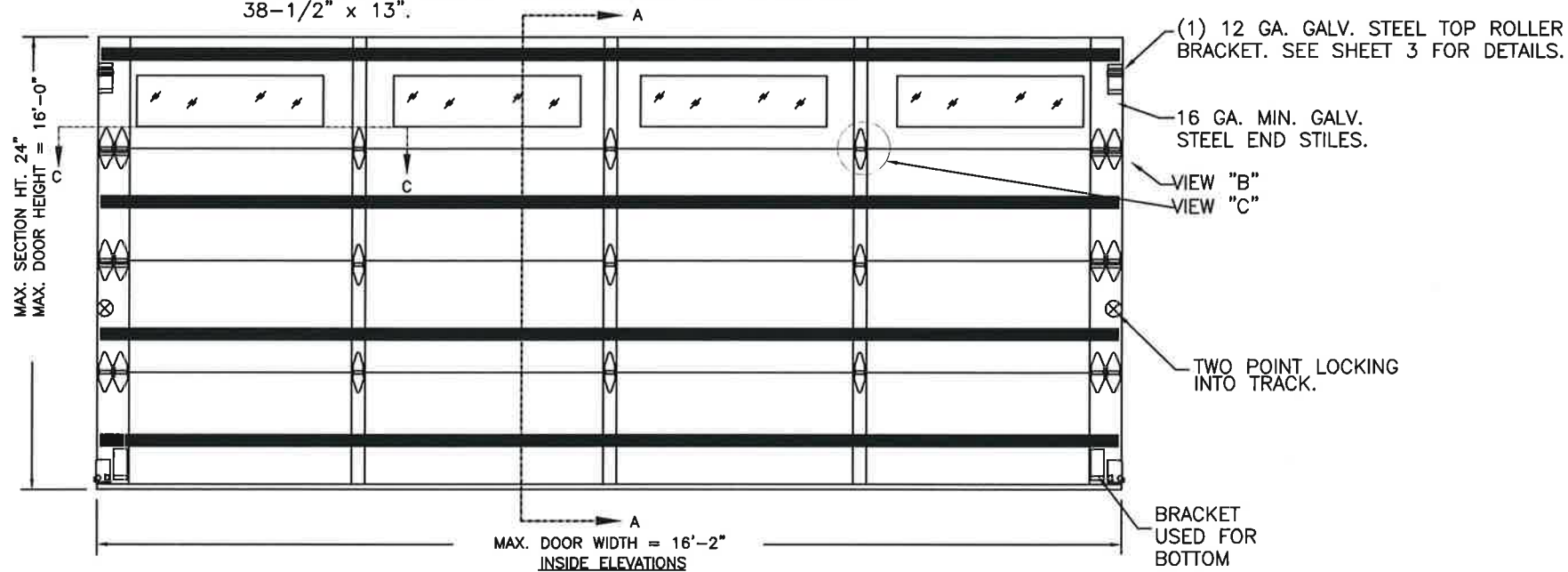
SHEET:  
1 OF 4

REVISIONS					DESCRIPTION
REV. NO.	ZONE:	DATE:	ECN NO.	APPVD:	
01	-	4/18/13	-	SH	REVISED SECTION VIEWS ON SHEET 4.
02	-	2/2015	-	SH	UPDATED TOP BRACKET CONFIGURATION.
03	-	8/2016	-	SH	REMOVED WIND SPEED TABLE.
04	-	11/24/20	-	SH	UPDATED TITLE BLOCK AND ADDED COMPLIANCE STATEMENT.

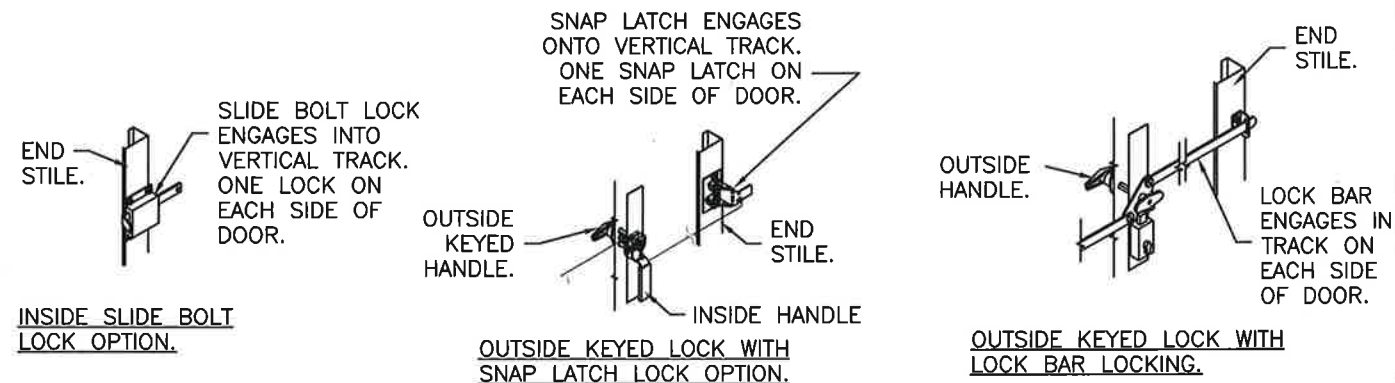
THIS PRODUCT COMPLIES WITH THE 2018 IBC/IRC.

OPTIONAL IMPACT RESISTANT GLAZING. SEE SECTION B-B ON SHEET TWO FOR DETAILS. LONG GLAZING SHOWN; SHORT GLAZING ALSO APPROVED. GLAZING NOT TO EXCEED 38-1/2" x 13".

(1) 20 GA. BACKER PLATE AT EACH INTERMEDIATE HINGE LOCATION. BACKER PLATES ATTACHED WITH DOUBLE-SIDED ACRYLIC ADHESIVE TO BACK OF DOOR.



DOOR HEIGHT	# OF SECTIONS
UP TO 8'0"	4
8'3" TO 10'0"	5
10'3" TO 12'0"	6
12'3" TO 14'0"	7
14'3" TO 16'0"	8
MAX SECTION HEIGHT: 24'	



DESIGN ENGINEER:  
MARK WESTERFIELD, P.E.  
11/25/20

FLORIDA P.E. #48495, NC P.E. #23832, TEXAS P.E. #91513

DESIGN LOADS: +38.0 P.S.F. & -42.0 P.S.F.  
TEST LOADS: +57.0 P.S.F. & -63.0 P.S.F.

Unless Stated Otherwise  
TOLERANCES are  
.0 = ±.031  
.00 = ±.015  
.000 = ±.005  
.0000 = ±.001  
Degrees = ±1/2'

Unless Stated Otherwise  
DIMENSIONS ARE IN INCHES.

**Clopay**  
CORPORATION  
8585 Duke Boulevard  
Mason, OH 45040 USA  
Tel. No. 513-770-4800  
Fax No. 513-770-4853

DESCRIPTION: 2" GALLERY EPS DOORS 16'2"W (SEE TABLE)			
DRAWN BY: SH	DATE: 1/10/13	SCALE: NTS	DWG. B
CHECKED BY: SH	DATE: 1/10/13	SHEET 1 OF 4	SIZE B
DWG. NO.: 104785		VER: TDI	

MANUFACTURING PRODUCT CODE  
DSIE-1F471

PART NO.: N/A

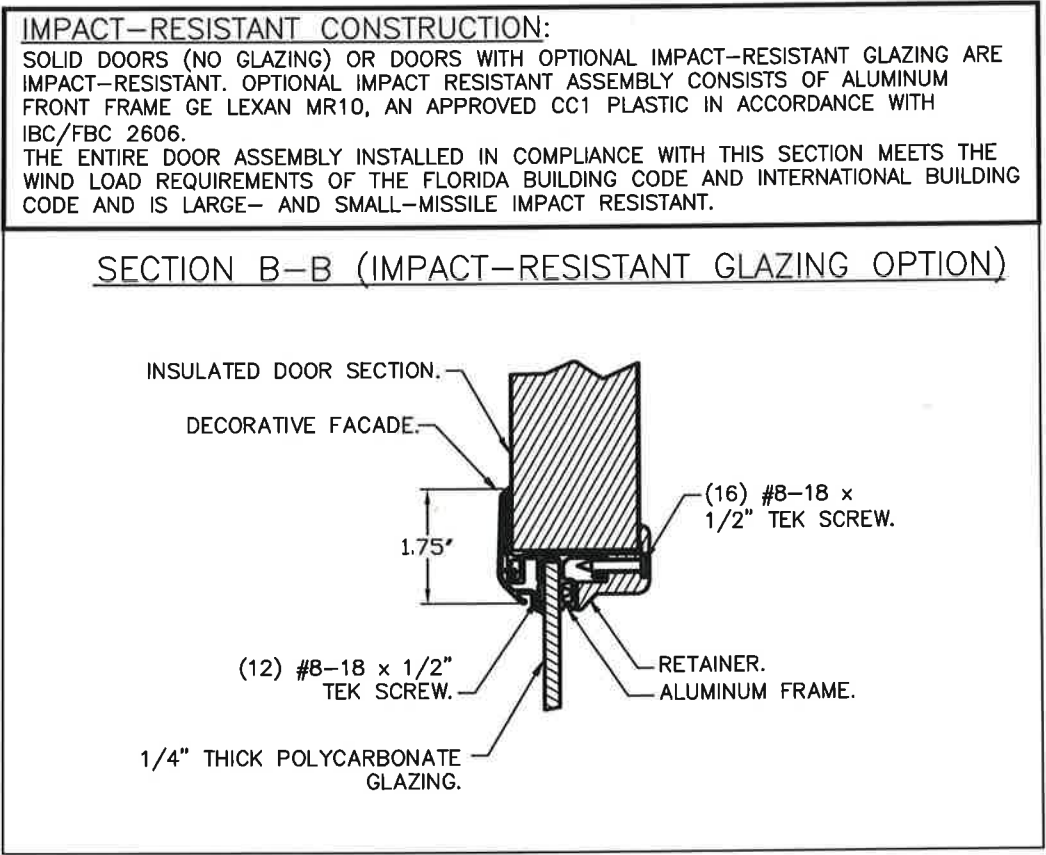
WINDLOAD RATING  
W6 DP38T

MODELS	SHORT	LONG
CLOPAY GALLERY	GD2SP, GR2SP	GD2LP, GR2LP
HOLMES ARTISTRY	AR2SP	AR2LP
IDEAL EXPRESSIONS	ED2SP	ED2LP

MODELS	FLUSH
CLOPAY CLASSIC	4302
HOLMES CLASSIC	6202
IDEAL CLASSIC	SFC68

SHEET  
2 OF 4

REVISIONS					
REV. NO.	ZONE	DATE	ECN NO.	APPVD	DESCRIPTION
04	-	-	-	SH	SEE REVISION HISTORY ON SHEET ONE.



DESIGN ENGINEER:  
 MARK WESTERFIELD, P.E.  
 FLORIDA P.E. #48495, NC P.E. #23832, TEXAS P.E. #91513

DESIGN LOADS: +38.0 P.S.F. & -42.0 P.S.F.  
 TEST LOADS: +57.0 P.S.F. & -63.0 P.S.F.

Unless Stated Otherwise  
 TOLERANCES are

.0	= ±.031
.00	= ±.015
.000	= ±.005
.0000	= ±.001
Degrees	= ±1/2'

Unless Stated Otherwise  
 DIMENSIONS ARE IN INCHES.

**Clopay** CORPORATION  
 8585 Duke Boulevard  
 Mason, OH 45040 USA  
 Tel. No. 513-770-4800  
 Fax No. 513-770-4853

DESCRIPTION: 2" GALLERY EPS DOORS 16'2"W (SEE TABLE)			
DRAWN BY: SH	DATE: 1/10/13	SCALE: NTS	DWG. B
CHECKED BY: SH	DATE: 1/10/13	SHEET 2 OF 4	SIZE B
DWG. NO.: 104785		VER: TDI	

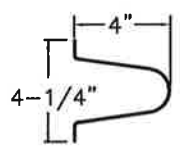
MANUFACTURING PRODUCT CODE  
 DSIE-1F471

PART NO.: N/A

WINDLOAD RATING  
 W6 DP38T

	4		3		2		1
MODELS	SHORT	LONG	MODELS	FLUSH	REVISIONS		
CLOPAY GALLERY	GD2SP, GR2SP	GD2LP, GR2LP	CLOPAY CLASSIC	4302	REV. NO.	ZONE:	DATE:
HOLMES ARTISTRY	AR2SP	AR2LP	HOLMES CLASSIC	6202	04	-	-
IDEAL EXPRESSIONS	ED2SP	ED2LP	IDEAL CLASSIC	SFC68	ECN NO.	APPVD:	DESCRIPTION
					-	SH	SEE REVISION HISTORY ON SHEET ONE.

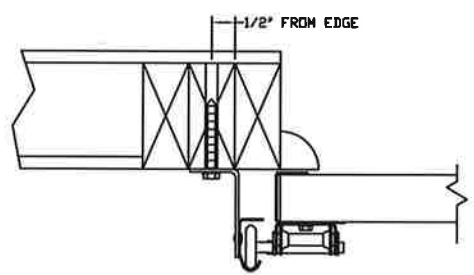
SHEET:  
3 OF 4



VIEW "D"  
4" TALL TAPER STRUT.  
0.062" MIN. GALV. STEEL,  
80 KSI MIN.

IN THE CASE OF GYPSUM WALLBOARD LOCATED AT OR NEAR THE DOOR OPENING LOCATION THERE ARE TWO ACCEPTABLE ALTERNATIVES:

- 1) THE WALLBOARD CAN BE CUT AWAY FROM THE DOOR OPENING AND 2X6 SOUTHERN YELLOW PINE WOOD JAMBS MOUNTED DIRECTLY TO THE SUPPORTING STRUCTURE TO CREATE THE MOUNTING SURFACE. ALTERNATIVELY, THE BRACKETS MAY BE ATTACHED DIRECTLY TO THE SUPPORTING STRUCTURE. SEE DETAIL BELOW. THE CENTER OF SCREW HOLE MUST BE AT LEAST 1/2" FROM BOTH EDGES FOR A 5/16" LAG SCREW.
- 2) IF THE WALLBOARD IS NOT CUT AWAY TO EXPOSE THE UNDERLYING STRUCTURE (WOOD FRAMING MEMBERS), A 2X6 SOUTHERN YELLOW PINE WOOD BUCK OVER SHALL BE INSTALLED THE WALLBOARD FRAMING THE OPENING USING THE JAMB ATTACHMENT FASTENERS LISTED BELOW. HOWEVER, THE JAMB ATTACHMENT FASTENERS MUST BE OF A SUFFICIENT INCREASED LENGTH TO ACCOUNT FOR THE THICKNESS OF THE WALLBOARD TO ENSURE PROPER FASTENER EMBEDMENT INTO THE STRUCTURAL FRAMING MEMBERS OF THE SUPPORTING STRUCTURE.



PREPARATION OF JAMBS BY OTHERS.

VERTICAL JAMB ATTACHMENT (WOOD FRAME BUILDINGS):

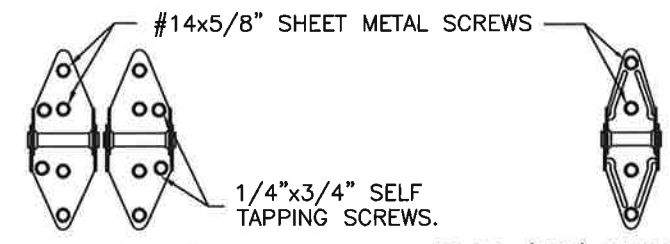
3/8"x3" LAG SCREWS ON 22" CENTERS. 1-1/8" O.D. WASHER REQUIRED. LAG SCREWS MAY BE COUNTERSUNK (BUT NOT REQUIRED) TO PROVIDE A FLUSH MOUNTING SURFACE. HORIZONTAL JAMBS DO NOT TRANSFER LOAD.

VERTICAL JAMB ATTACHMENT (C-90 BLOCK OR 2,000 PSI MIN. CONCRETE COLUMN):

3/8"x3" SLEEVE ANCHOR BOLTS ON 13" CENTERS (2,000 PSI MIN. CONCRETE). WASHERS INCLUDED WITH SLEEVE ANCHORS.  
OR  
1/4"x3" TAPCON SCREWS ON 11" CENTERS (2,000 PSI MIN. CONCRETE) OR 6" CENTERS (C-90 BLOCK), 1" O.D. WASHERS REQUIRED WITH TAPCONS.

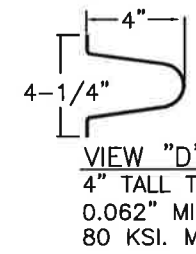
ANCHORS MAY BE COUNTERSUNK (BUT NOT REQUIRED) TO PROVIDE A FLUSH MOUNTING SURFACE. HORIZONTAL JAMBS DO NOT TRANSFER LOAD.

OTHER JAMB CONFIGURATIONS: REFER TO DASMA TDS-161. A LICENSED DESIGN PROFESSIONAL MAY ALSO BE EMPLOYED TO APPROVE ALTERNATE FASTENERS AND/OR JAMB CONFIGURATIONS.



14 GA. END HINGES  
VIEW "B"

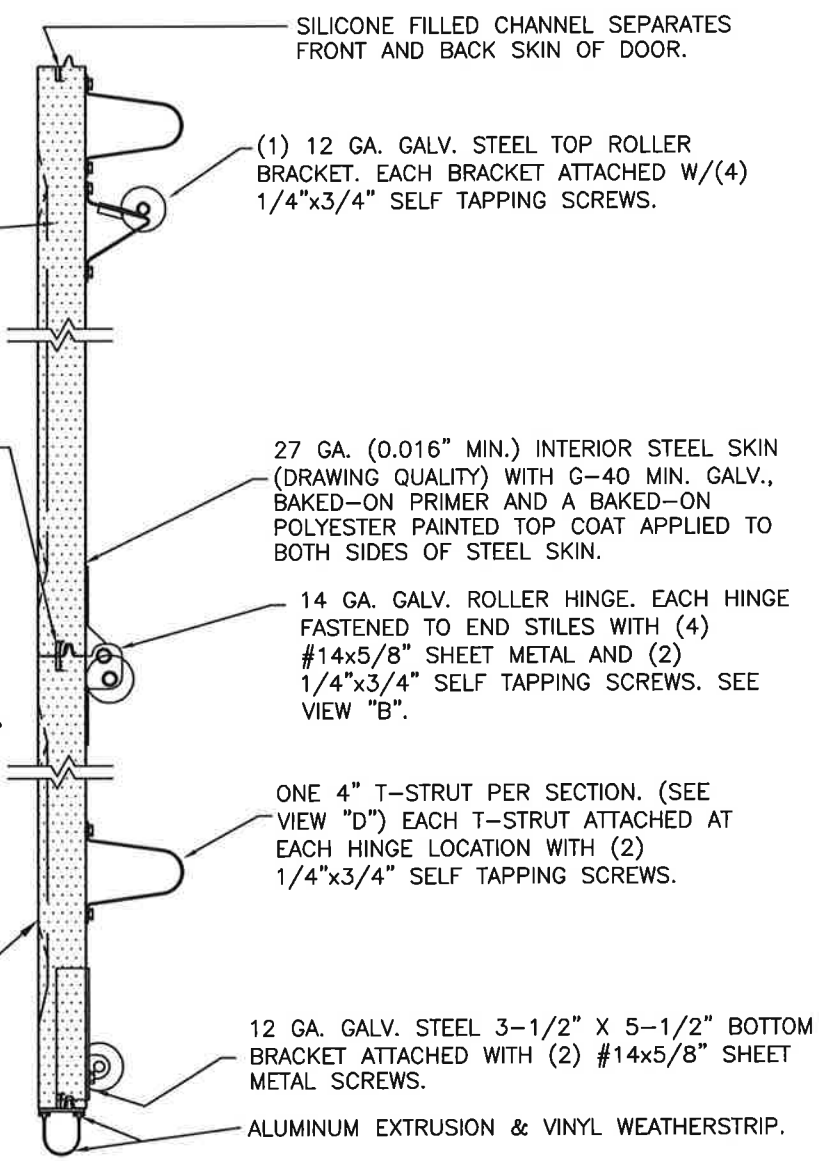
18 GA. (MIN.) INTERMEDIATE HINGE  
VIEW "C"



VIEW "D"  
4" TALL TAPER STRUT.  
0.062" MIN. GALV. STEEL,  
80 KSI MIN.

TONGUE AND GROOVE JOINTS.

27 GA (0.016" MIN.) EXTERIOR STEEL SKIN WITH G-40 MIN. GALV. BAKED-ON POLYESTER PAINTED TOP COAT APPLIED TO BOTH SIDES OF STEEL SKIN.



SECTION A-A (SIDE VIEW)

SILICONE FILLED CHANNEL SEPARATES FRONT AND BACK SKIN OF DOOR.

(1) 12 GA. GALV. STEEL TOP ROLLER BRACKET. EACH BRACKET ATTACHED W/(4) 1/4"x3/4" SELF TAPPING SCREWS.

1.95" THICK, 1# DENSITY EXPANDED POLYSTYRENE FOAM INSULATION LAMINATED TO BOTH EXTERIOR AND INTERIOR SKINS.

27 GA. (0.016" MIN.) INTERIOR STEEL SKIN (DRAWING QUALITY) WITH G-40 MIN. GALV., BAKED-ON PRIMER AND A BAKED-ON POLYESTER PAINTED TOP COAT APPLIED TO BOTH SIDES OF STEEL SKIN.

14 GA. GALV. ROLLER HINGE. EACH HINGE FASTENED TO END STILES WITH (4) #14x5/8" SHEET METAL AND (2) 1/4"x3/4" SELF TAPPING SCREWS. SEE VIEW "B".

ONE 4" T-STRUT PER SECTION. (SEE VIEW "D") EACH T-STRUT ATTACHED AT EACH HINGE LOCATION WITH (2) 1/4"x3/4" SELF TAPPING SCREWS.

12 GA. GALV. STEEL 3-1/2" X 5-1/2" BOTTOM BRACKET ATTACHED WITH (2) #14x5/8" SHEET METAL SCREWS.

ALUMINUM EXTRUSION & VINYL WEATHERSTRIP.

DESIGN LOADS: +38.0 P.S.F. & -42.0 P.S.F.  
TEST LOADS: +57.0 P.S.F. & -63.0 P.S.F.

Unless Stated Otherwise TOLERANCES are

.0	= ±.031
.00	= ±.015
.000	= ±.005
.0000	= ±.001
Degrees	= ±1/2'

Unless Stated Otherwise DIMENSIONS ARE IN INCHES.

**Clopay**  
CORPORATION

8585 Duke Boulevard  
Mason, OH 45040 USA  
Tel. No. 513-770-4800  
Fax No. 513-770-4853

DESCRIPTION: 2" GALLERY EPS DOORS 16'2"W (SEE TABLE)

DRAWN BY: SH

DATE: 1/10/13

SCALE: NTS

DWG. B

CHECKED BY: SH

DATE: 1/10/13

SHEET 3 OF 4

SIZE B

DWG. NO.: 104785

VER: TDI

MANUFACTURING PRODUCT CODE  
DSIE-1F471

PART NO.: N/A

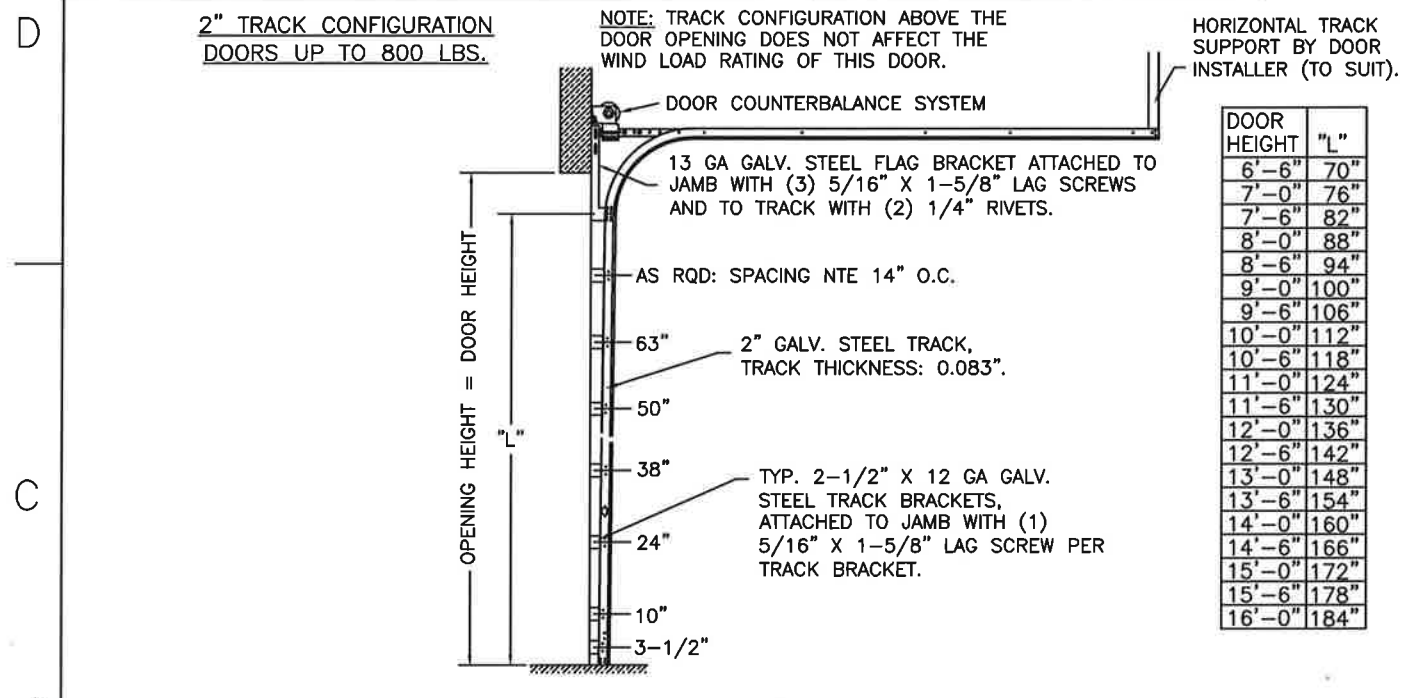
WINDLOAD RATING  
W6 DP38T

DESIGN ENGINEER:  
MARK WESTERFIELD, P.E.  
FLORIDA P.E. #48495, NC P.E. #23832, TEXAS P.E. #91513

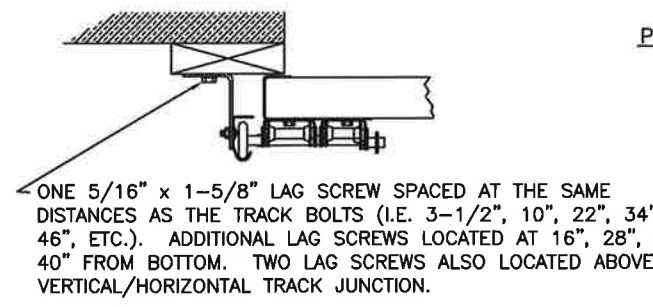
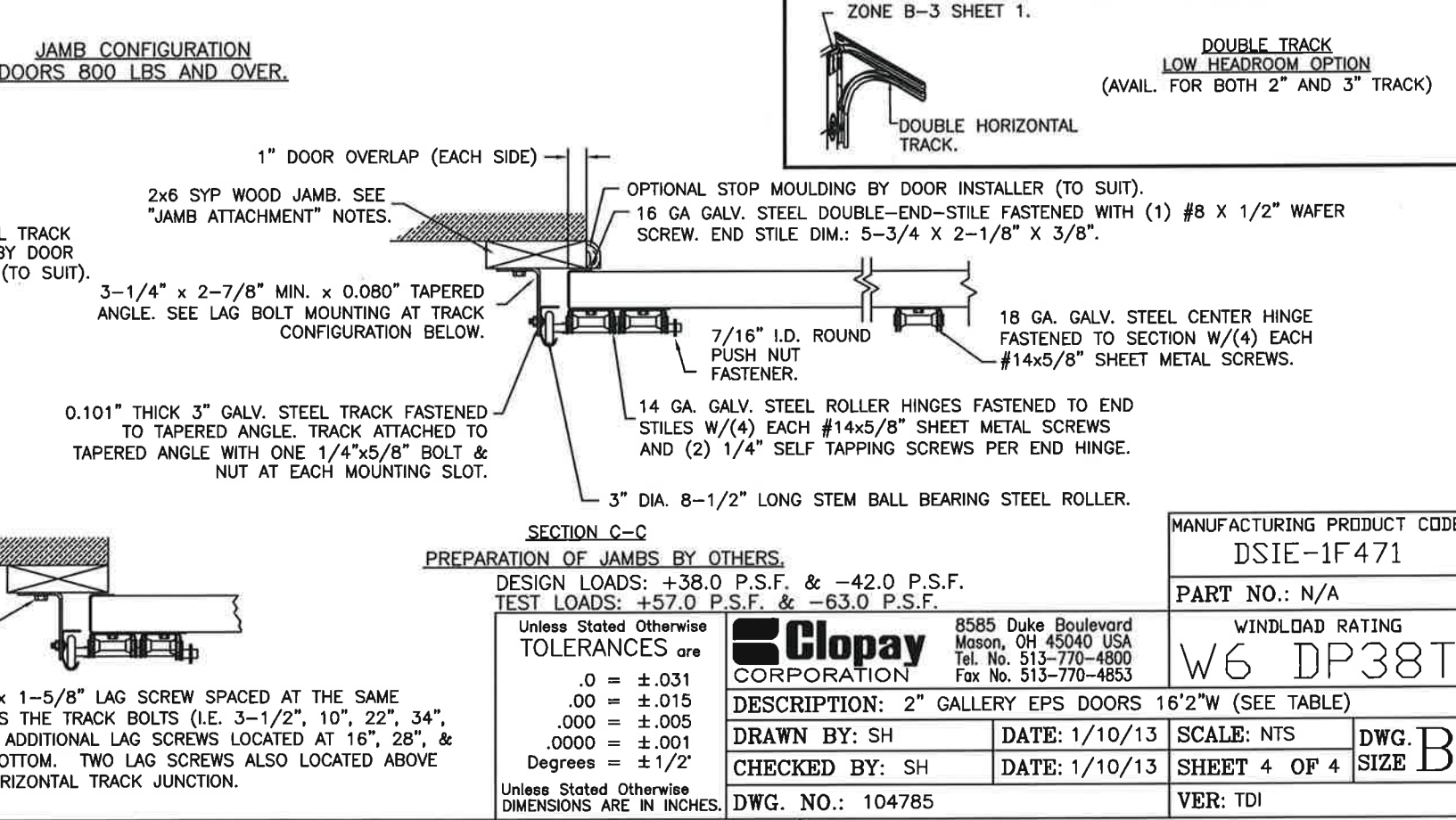
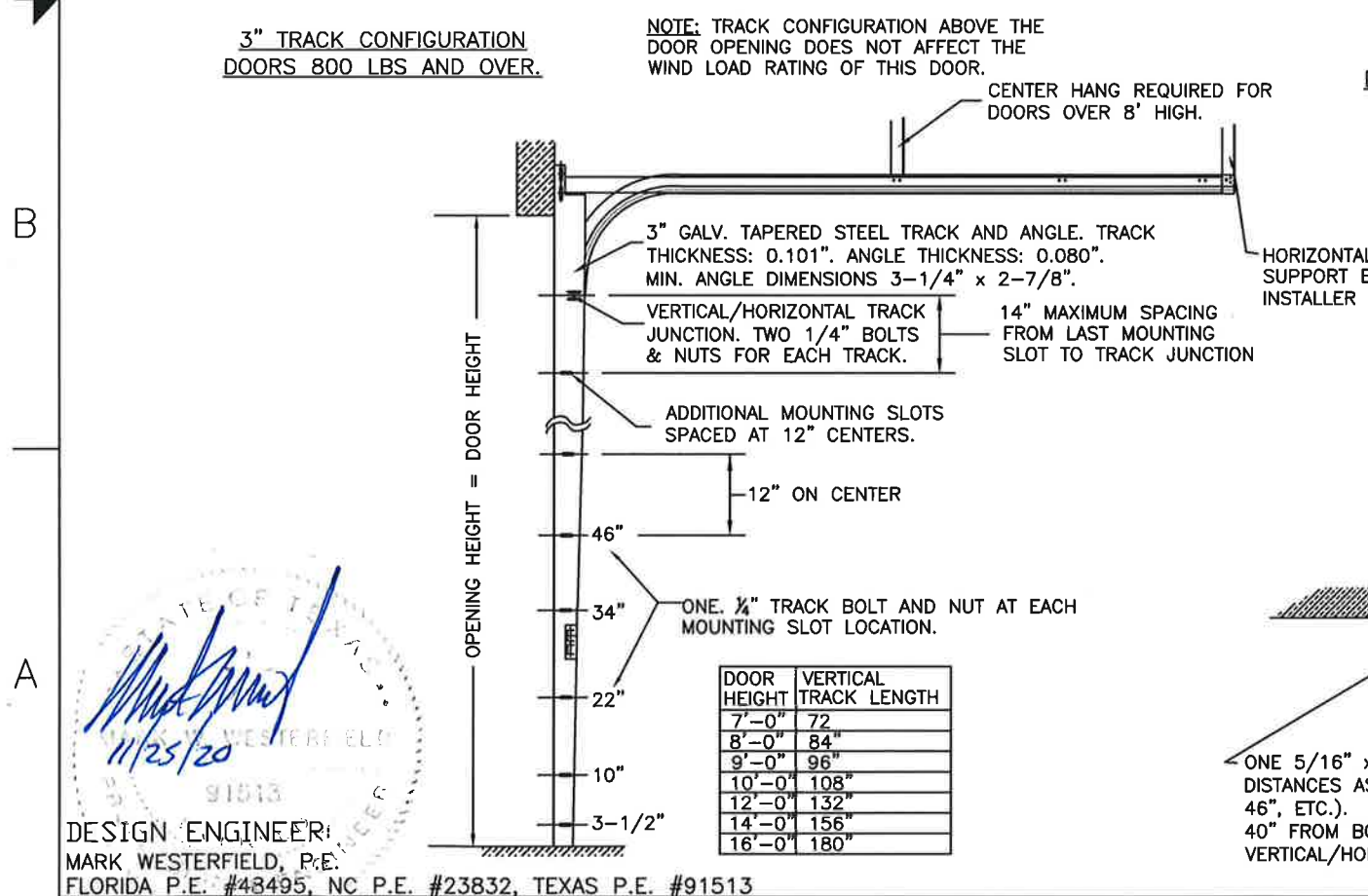
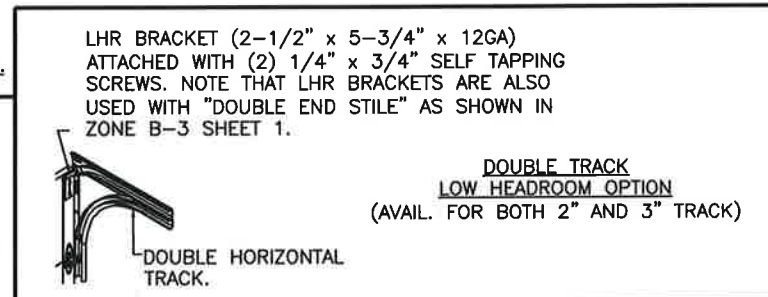
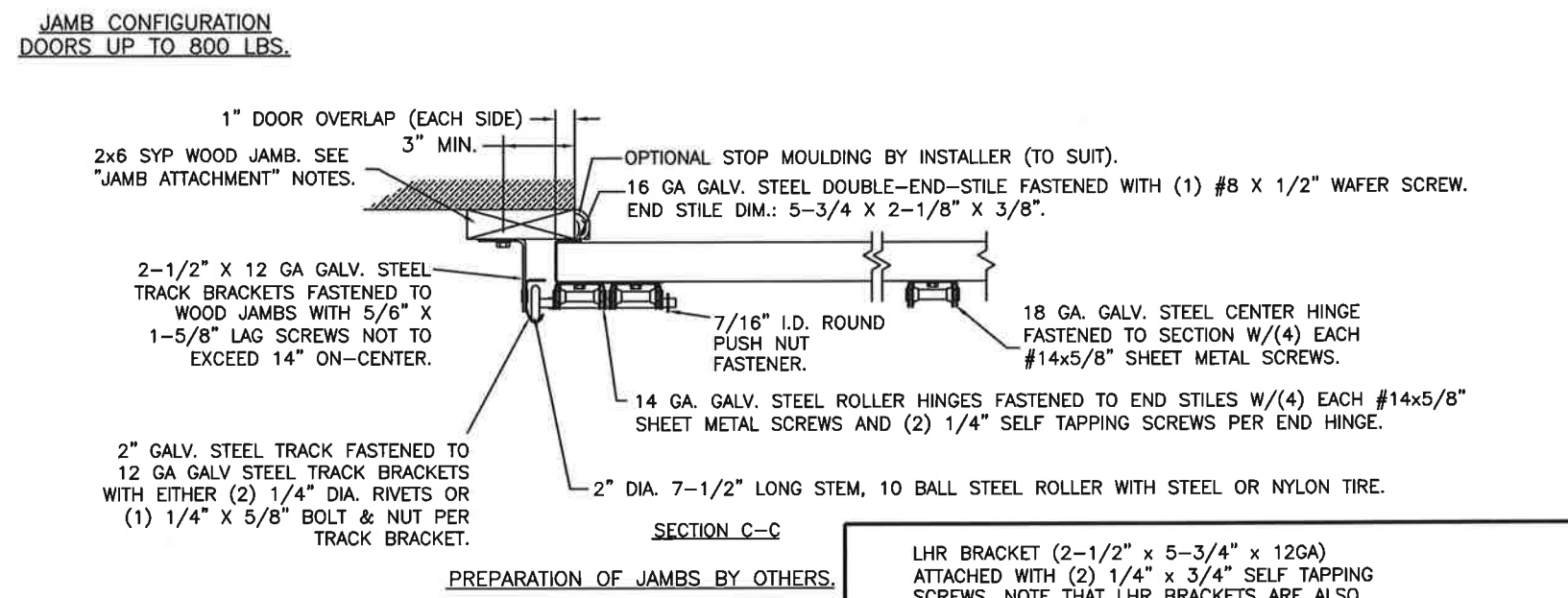
11/25/20

	4		3		2		1
MODELS	SHORT	LONG	MODELS	FLUSH	REVISIONS		
CLOPAY GALLERY	GD2SP, GR2SP	GD2LP, GR2LP	CLOPAY CLASSIC	4302	REV. NO.	ZONE:	DATE:
HOLMES ARTISTRY	AR2SP	AR2LP	HOLMES CLASSIC	6202	04	-	-
IDEAL EXPRESSIONS	ED2SP	ED2LP	IDEAL CLASSIC	SFC68	ECN NO.	APPVD:	DESCRIPTION
						SH	SEE REVISION HISTORY ON SHEET ONE.

SHEET:	4 OF 4
--------	--------



DOOR HEIGHT	"L"
6'-6"	70"
7'-0"	76"
7'-6"	82"
8'-0"	88"
8'-6"	94"
9'-0"	100"
9'-6"	106"
10'-0"	112"
10'-6"	118"
11'-0"	124"
11'-6"	130"
12'-0"	136"
12'-6"	142"
13'-0"	148"
13'-6"	154"
14'-0"	160"
14'-6"	166"
15'-0"	172"
15'-6"	178"
16'-0"	184"



DESIGN ENGINEER:  
MARK WESTERFIELD, P.E.  
FLORIDA P.E. #48495, NC P.E. #23832, TEXAS P.E. #91513

11/25/20

MANUFACTURING PRODUCT CODE	DSIE-1F471
PART NO.:	N/A
WINDLOAD RATING	W6 DP38T
DESCRIPTION:	2" GALLERY EPS DOORS 16'2"W (SEE TABLE)
DRAWN BY:	SH
DATE:	1/10/13
SCALE:	NTS
DWG. NO.:	104785
CHECKED BY:	SH
DATE:	1/10/13
SHEET	4 OF 4
SIZE	B
VER:	TDI