

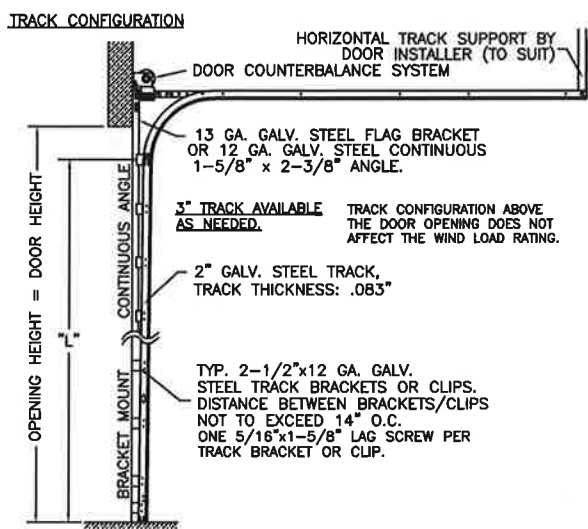
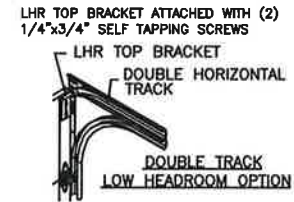
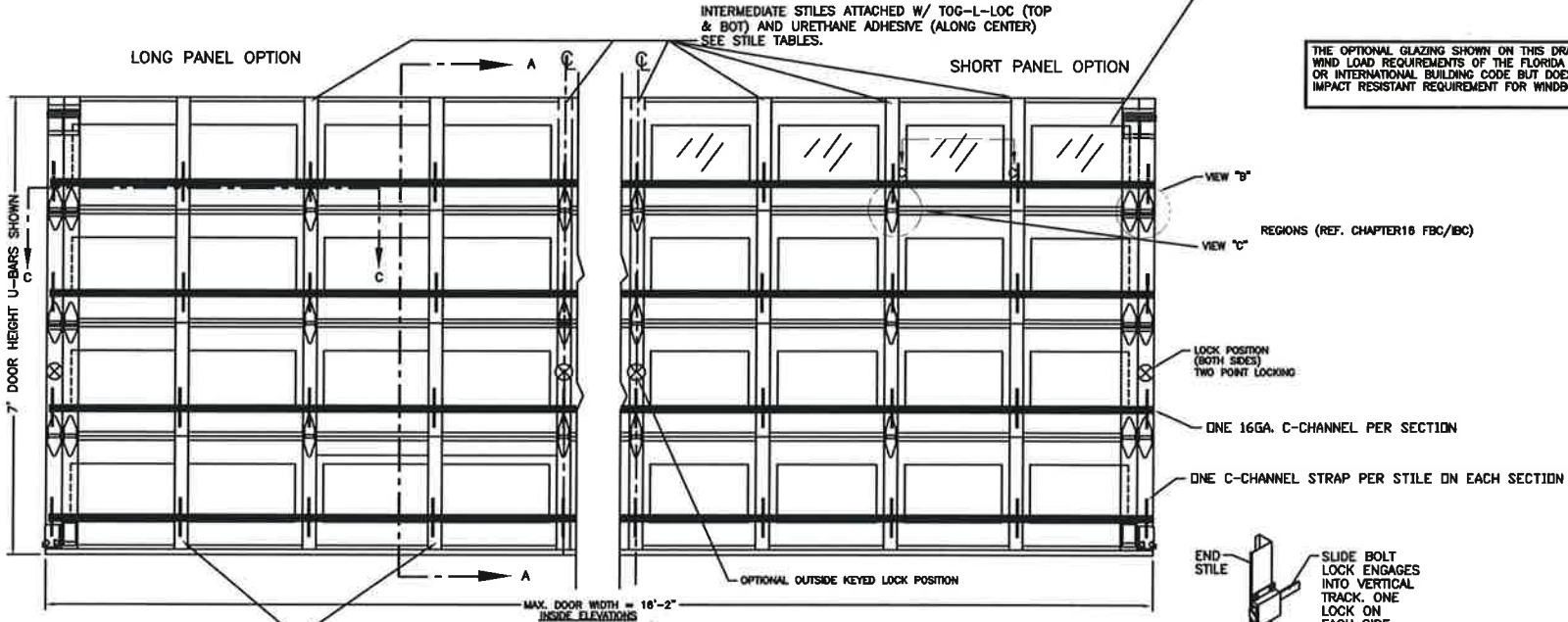
MODELS	STANDARD	INSULATED
CLOPAY IDEAL	G4S, GS4, G4L, GL4, GD4S, GD4L, GR4S, GR4L	G4SV, GS4V, G4LV, GL4V, GD4SV, GD4LV, GR4SV, GR4LV
HOLMES	E4S, E4L, ED4S, ED4L, MR4S, MR4L	E4SV, E4LV, ED4SV, ED4LV, MR4SV, MR4LV
	SS4, SL4, AR4S, AR4L	SS4V, SL4V, AR4SV, AR4LV

OPTIONAL WINDOW LITES DSB GLASS AVAILABLE (SEE SECTION C-C)
(MAX CUT-OUT NOT TO EXCEED 15-5/8" WIDE X 15-1/16" TALL)

THE OPTIONAL GLAZING SHOWN ON THIS DRAWING MEETS THE WIND LOAD REQUIREMENTS OF THE FLORIDA BUILDING CODE OR INTERNATIONAL BUILDING CODE BUT DOES NOT MEET THE IMPACT RESISTANT REQUIREMENT FOR WINDBORNE DEBRIS

REV	DATE	DESCRIPTION
05	12/2009	INCREASED DESIGN LOAD.
06	02/2012	UPDATED WINDCODE CHART.
07	08/2012	REVISED FOR TDI
08	06/2013	REMOVED ACRYLIC GLAZING OPTION. ADDED GLAZING DIMENSION.
09	08/2016	REMOVED WIND SPEED TABLE.
10	11/23/20	UPDATED TITLE BLOCK AND ADDED COMPLIANCE STATEMENT.

THIS PRODUCT COMPLIES WITH THE 2018 IBC/IRC.



DOOR HEIGHT	"L"
6'-0"	70"
7'-0"	76"
8'-0"	82"
9'-0"	88"
10'-0"	94"
11'-0"	100"
12'-0"	106"
13'-0"	112"
14'-0"	118"
15'-0"	124"
16'-0"	130"
17'-0"	136"
18'-0"	142"
19'-0"	148"
20'-0"	154"
21'-0"	160"
22'-0"	166"
23'-0"	172"
24'-0"	178"
25'-0"	184"

DOOR HEIGHT	# OF SECTIONS
6'-0"	3
6'-3" TO 8'-0"	4
8'-3" TO 10'-0"	5
10'-3" TO 12'-0"	6
12'-3" TO 14'-0"	7
14'-3" TO 16'-0"	8
MAX SECTION HEIGHT:	24"

FOR MODELS G4L, G4LV, E4L, E4LV, GL4, GL4V, SL4, SL4V ONLY (LONG EMBOSS DOORS):
ADDITIONAL 18 GA. COMMERCIAL INTERM. STILES REQUIRED FROM 11'-0" WIDE TO 16'-0" WIDE
SEE 'STILE TABLE FOR LONG EMBOSS DOORS'. THESE COMMERCIAL CENTER STILES ARE ATTACHED MIDPOINT BETWEEN THE EXISTING RESIDENTIAL CENTER STILES. COMMERCIAL CENTER STILES ARE ATTACHED WITH TOG-L-LOC (TOP & BOTTOM) OR (4) 3/16" POP RIVETS OR (4) #8 SHEET METAL SCREWS.

DOOR AVAILABLE IN SHORT OR LONG EMBOSS. DOOR MAY CONSIST OF A MIXTURE OF LONG AND SHORT PANEL SECTIONS.

STILE TABLE FOR LONG EMBOSS DOORS

DOOR WIDTH	# OF HINGES	# OF STD. INTERM. STILES	# OF COMM. INTERM. STILES
9'-2" TO 10'-0"	1	1	2
10'-2" TO 11'-4"	N/A	N/A	N/A
11'-6" TO 13'-10"	2	2	3
14'-0" TO 16'-2"	3	3	4

STILE TABLE FOR SHORT EMBOSS DOORS

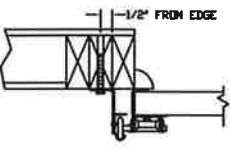
DOOR WIDTH	# OF HINGES	# OF STD. INTERM. STILES
9'-2" TO 10'-0"	1	3
10'-2" TO 11'-4"	N/A	N/A
11'-6" TO 13'-10"	2	5
14'-0" TO 16'-2"	3	7

EQUIVALENT SECTION CONSTRUCTION: FOR ANY OF THE MODELS LISTED ON THIS DRAWING, THE FOLLOWING W-LEVEL DOORS USE EQUIVALENT SECTIONS (UP TO THE MAXIMUM WIDTH ALLOWED ON THIS DRAWING).
W6, W8.

ANY OF THESE W-LEVELS MAY BE SHOWN ON THE OPTIONAL SHIPPING LABEL ON THE END STILE.

IN THE CASE OF GYPSUM WALLBOARD LOCATED AT OR NEAR THE DOOR OPENING LOCATION THERE ARE TWO ACCEPTABLE ALTERNATIVES:

- 1) THE WALLBOARD CAN BE CUT AWAY FROM THE DOOR OPENING AND 2X6 SOUTHERN YELLOW PINE WOOD JAMBS MOUNTED DIRECTLY TO THE SUPPORTING STRUCTURE TO CREATE THE MOUNTING SURFACE. ALTERNATIVELY, THE BRACKETS MAY BE ATTACHED DIRECTLY TO THE SUPPORTING STRUCTURE. SEE DETAIL BELOW. THE CENTER OF SCREW HOLE MUST BE AT LEAST 1/2" FROM BOTH EDGES FOR A 5/16" LAG SCREW.
- 2) IF THE WALLBOARD IS NOT CUT AWAY TO EXPOSE THE UNDERLYING STRUCTURE (WOOD FRAMING MEMBERS), A 2X6 SOUTHERN YELLOW PINE WOOD BUCK OVER SHALL BE INSTALLED THE WALLBOARD FRAMING THE OPENING USING THE JAMB ATTACHMENT FASTENERS LISTED BELOW. HOWEVER, THE JAMB ATTACHMENT FASTENERS MUST BE OF A SUFFICIENT INCREASED LENGTH TO ACCOUNT FOR THE THICKNESS OF THE WALLBOARD TO ENSURE PROPER FASTENER EMBEDMENT INTO THE STRUCTURAL FRAMING MEMBERS OF THE SUPPORTING STRUCTURE.



NOTE: THE DESIGN OF THE SUPPORTING STRUCTURAL ELEMENTS SHALL BE THE RESPONSIBILITY OF THE PROFESSIONAL OF RECORD FOR THE BUILDING OR STRUCTURE AND IN ACCORDANCE WITH CURRENT BUILDING CODES FOR THE LOADS LISTED ON THIS DRAWING.

PREPARATION OF JAMBS BY OTHERS.

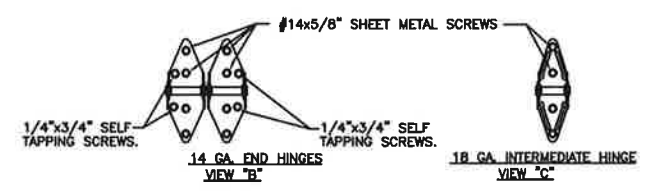
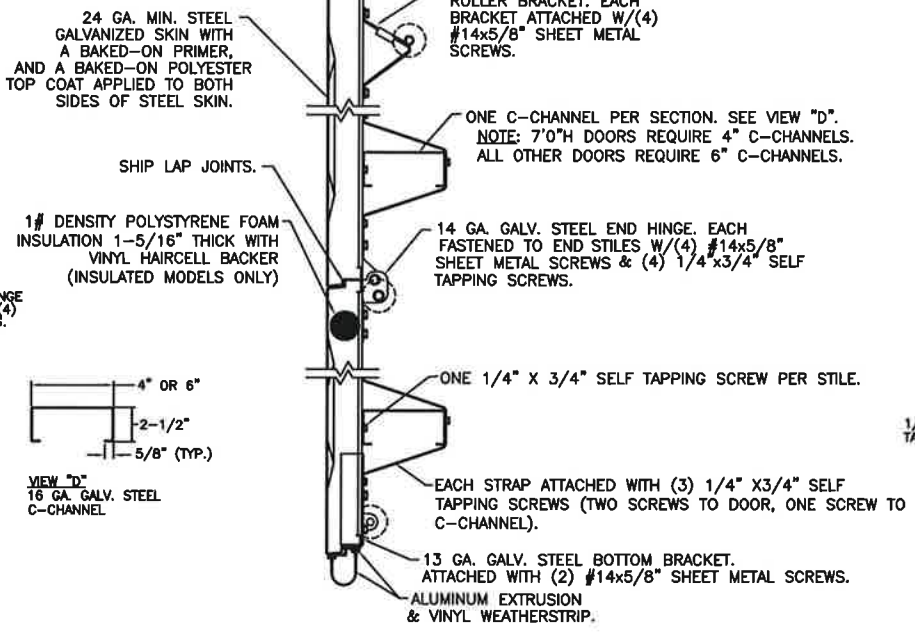
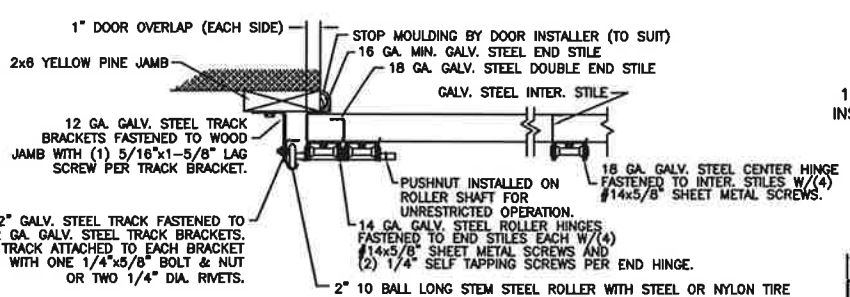
VERTICAL JAMB ATTACHMENT (WOOD FRAME BUILDINGS):
3/8"x3" LAG SCREWS ON 12" CENTERS. 1-1/8" O.D. WASHER REQUIRED. LAG SCREWS MAY BE COUNTERSUNK (BUT NOT REQUIRED) TO PROVIDE A FLUSH MOUNTING SURFACE. HORIZONTAL JAMBS DO NOT TRANSFER LOAD.

VERTICAL JAMB ATTACHMENT (C-90 BLOCK OR 2,000 PSI MIN. CONCRETE COLUMN):
3/8"x3" SLEEVE ANCHOR BOLTS ON 12" CENTERS (2,000 PSI MIN. CONCRETE). WASHERS INCLUDED WITH SLEEVE ANCHORS.
OR
1/4"x3" TAPCON SCREWS ON 10" CENTERS (2,000 PSI MIN. CONCRETE) OR 6" CENTERS (C-90 BLOCK). 1" O.D. WASHERS REQUIRED WITH TAPCONS. ANCHORS MAY BE COUNTERSUNK (BUT NOT REQUIRED) TO PROVIDE A FLUSH MOUNTING SURFACE. HORIZONTAL JAMBS DO NOT TRANSFER LOAD.

OTHER JAMB CONFIGURATIONS: REFER TO DSMA TDS-161. A LICENSED DESIGN PROFESSIONAL MAY ALSO BE EMPLOYED TO APPROVE ALTERNATE FASTENERS AND/OR JAMB CONFIGURATIONS.

PREPARATION OF JAMBS BY OTHERS.

JAMB CONFIGURATION SECTION C-C



ORIGINAL DRAWINGS ARE SIGNED IN BLUE INK WITH A PASED SEAL (IMPRESS).

DESIGN ENGINEER: MARK WESTERFIELD, P.E.
FLORIDA P.E. #48495,
NC P.E. #23832,
TEXAS P.E. #91513

CLOPAY CORPORATION
8585 DUKE BLVD.
MASON, OH 45040
(513) 770-4800

Clopay Corporation All Rights Reserved.
The arrangements depicted herein are the sole property of the Clopay Corporation and may not be reproduced in any form without its written permission.

MANUFACTURING PRODUCT CODE:
SHORT: PAN-2F443
LONG: PAN-2F446

DATE: 5/31/05
DRAWN BY: RJK

WINDLOAD RATING	MAX. DOOR SIZE
W6	16'2"W x 16'0"H
DESCRIPTION: G4S, G4SV, G4L, G4LV; 16'W +37/-41 PSF	
DRAWING NUMBER: B 103489 - A/B	

DESIGN LOADS: +37.0 PSF & -41.0 PSF.
TEST LOADS: +55.5 PSF & -61.5 PSF.