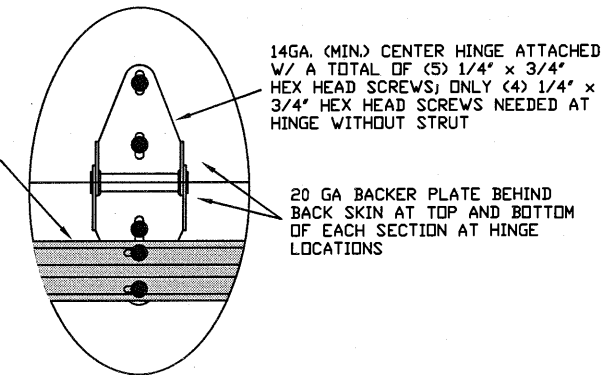
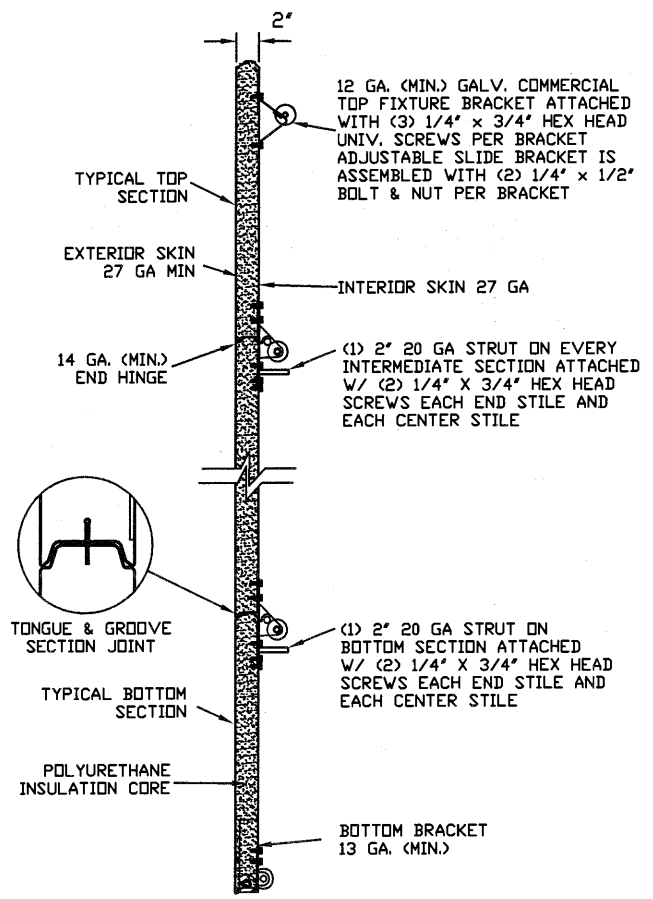


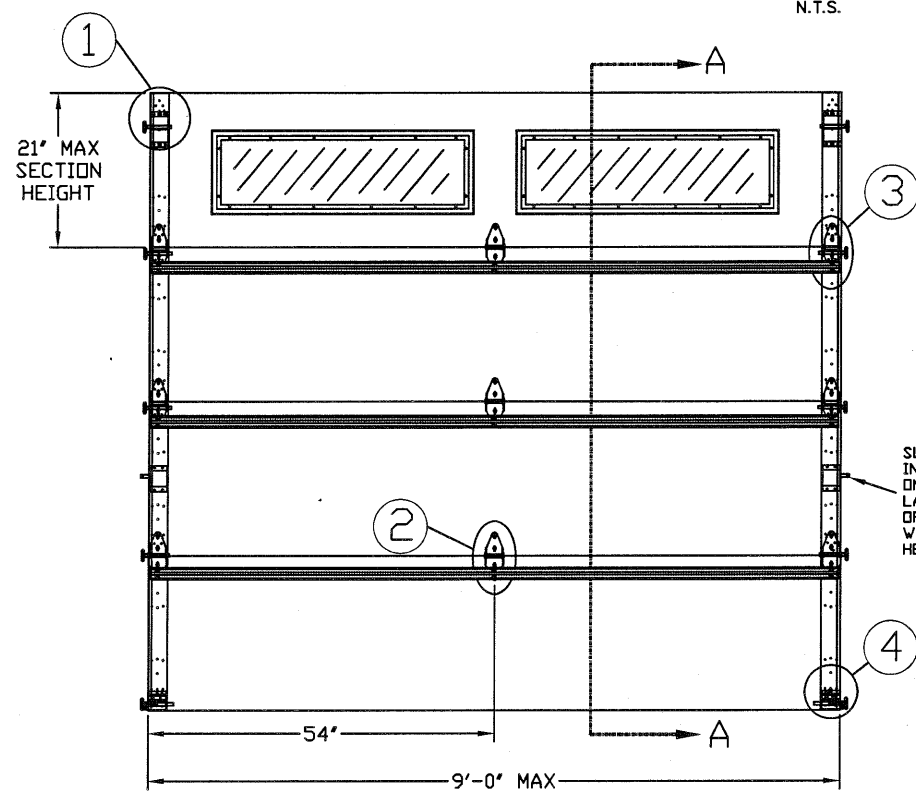
TYPICAL TOP FIXTURES
N.T.S. 1



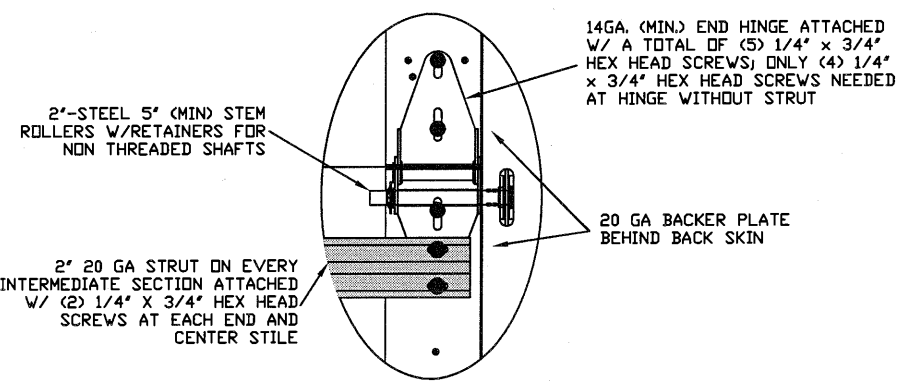
TYPICAL CENTER HINGE
N.T.S. 2



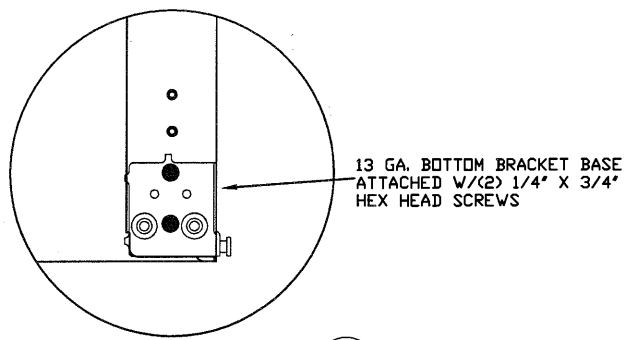
SECTION A-A (SIDE VIEW)
N.T.S.



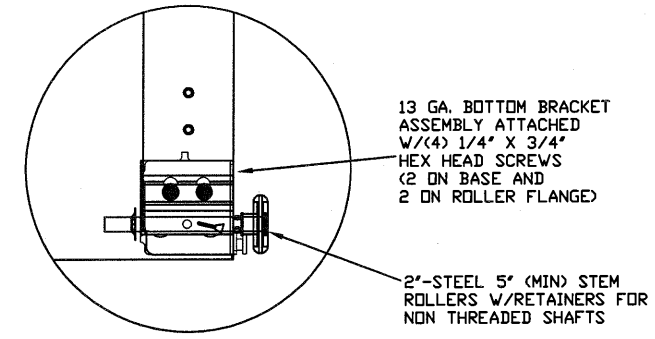
INSIDE ELEVATION
N.T.S.



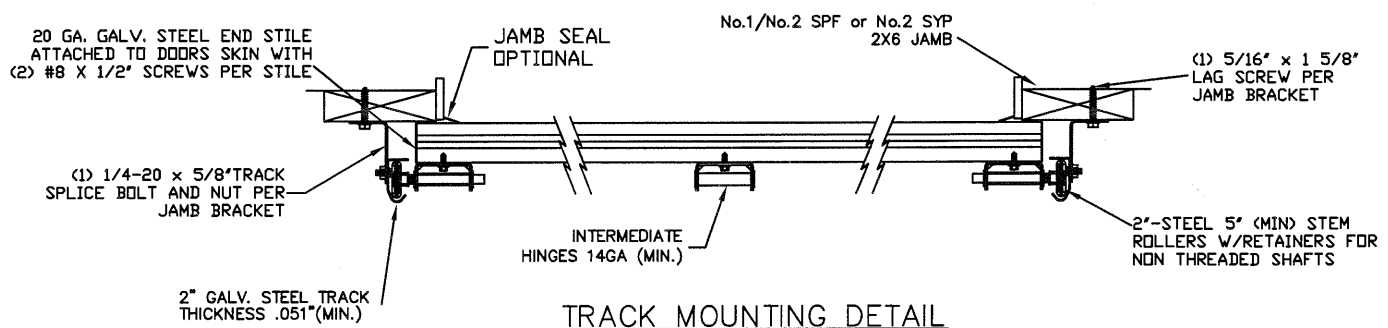
TYPICAL END HINGE
N.T.S. 3



TRBB-375 BOTTOM BRACKET 4A
N.T.S.



TRBB-375 BOTTOM BRACKET 4B
N.T.S.



TRACK MOUNTING DETAIL
N.T.S.

THE METHOD OF TESTING WAS IN SUBSTANTIAL CONFORMANCE WITH THE PROCEDURE DESCRIBED IN ASTM E330 AND DASMA 108. THE PRESSURES SHOWN ON THE DRAWINGS WERE CALCULATED USING ASCE 7-98/02/05 WITH THE FOLLOWING PARAMETERS (5 FEET OF DOOR WIDTH IN THE END ZONE, ROOF AT ANY SLOPE, AND I=1.0):

WIND SPEED (MPH)	130	118	112	107	103
EXPOSURE LEVEL	B	C	C	D	D
MEAN ROOF HEIGHT	30'	15'	25'	15'	25'

REV	DESCRIPTION OF REVISIONS	DATE	BY

MAX SIZE 9' x 14'

DESIGN LOADS +26.7 PSF -31.6 PSF

TEST LOADS +40.1 PSF -47.4 PSF

Thomas L. Shelmerdine, PE (TX PE #85829) Structural Solutions, PA (TX Firm #F-004063)

TX

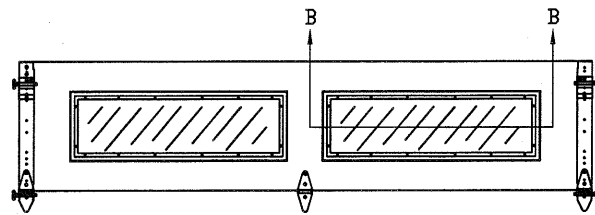
Amarr ENTREMATICS

MODEL P500 AMARR OLYMPUS 500
MODEL D500 AMARR DESIGNERS CHOICE DC-500

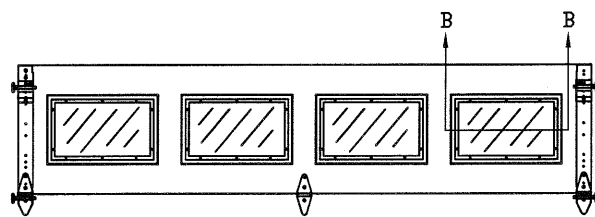
165 CARRIAGE COURT WINSTON-SALEM, NC 27105

9521-G W. Friendly Ave., Greensboro, NC 27410

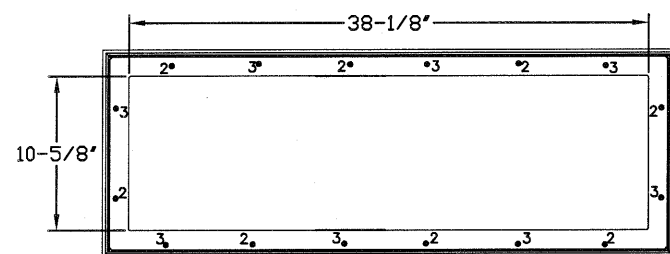
SIZE	DRAWN BY RLR	DATE 12/06/17	DRAWING NUMBER
B	CHECKED BY RLR	DATE 12/06/17	IRC-P509-130-11
ENTREMATICS			SHEET 1 OF 3



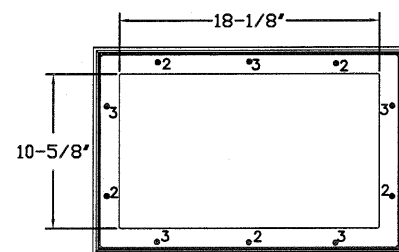
OPTIONAL GLAZED TOP SECTION W/ RESIDENTIAL LONG PANEL WINDOWS
N.T.S.



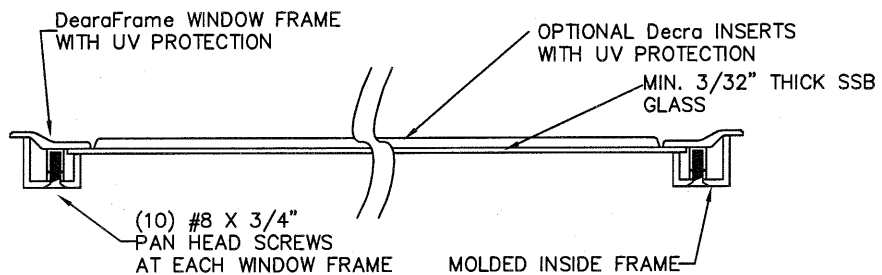
OPTIONAL GLAZED TOP SECTION W/ RESIDENTIAL SHORT PANEL WINDOWS
N.T.S.



LONG PANEL GLAZING FASTENER DETAIL
N.T.S.



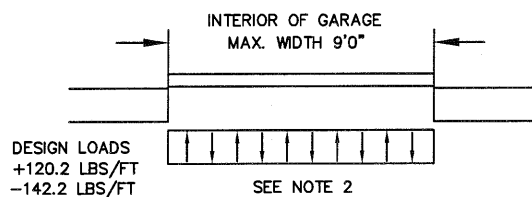
SHORT PANEL GLAZING FASTENER DETAIL
N.T.S.



SECTION B-B RESIDENTIAL LONG PANEL WINDOW DETAIL
N.T.S.

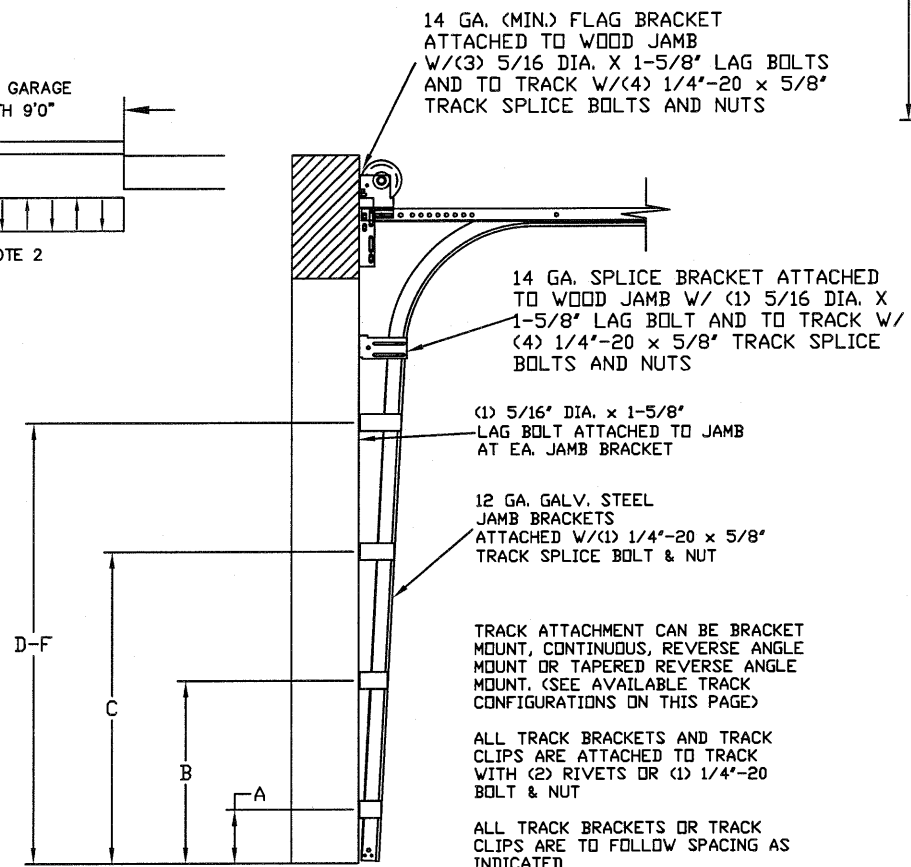
SPECIFICATIONS AND NOTES

1. ALL THE LOAD FROM THE DOOR IS TRANSFERRED TO THE VERTICAL TRACK, FROM THE TRACK THE LOAD IS TRANSFERRED TO THE VERTICAL JAMBS. THE HORIZONTAL JAMB OR HEADER RECEIVES NO PORTION OF THE LOAD TRANSFERRED FROM THE DOOR.
2. EACH VERTICAL JAMBS RECEIVES MAXIMUM DESIGN LOADS OF: +120.2 LBS/FT & -142.2 LBS/FT
3. DOORS AND HARDWARE WILL BE DESIGNED, MANUFACTURED AND INSTALLED WITH STANDARDS AS SET FORTH BY DASMA.
4. DOOR SECTIONS SHALL BE 27 GA. (.015) MIN. EXTERIOR AND INTERIOR SKIN, ROLLED FORMED, W/ BAKED ON POLYESTER FINISH
5. SUPPORTING STRUCTURAL ELEMENTS SHALL BE DESIGNED BY A REGISTERED PROFESSIONAL ENGINEER FOR WIND LOADS INDICATED ON THIS DRAWING IN ADDITION TO OTHER LOADINGS.

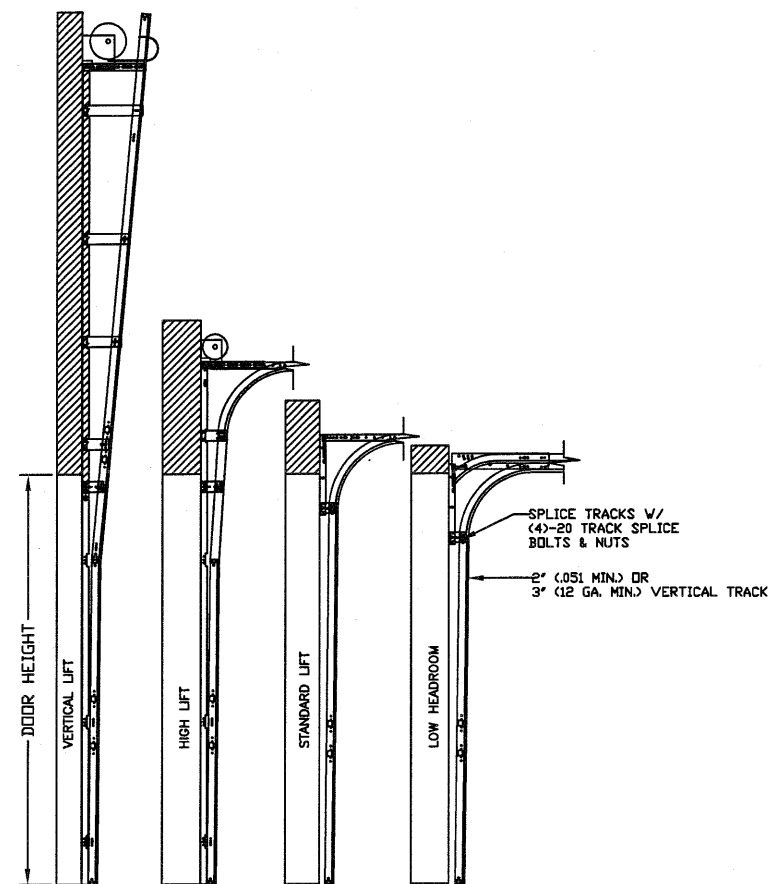


DESIGN LOADS
+120.2 LBS/FT
-142.2 LBS/FT

SEE NOTE 2



TRACK CONFIGURATION FOR UP TO 14' TALL DOORS
SEE TABLE 1



AVAILABLE TRACK CONFIGURATIONS
N.T.S.

REV	DESCRIPTION OF REVISIONS	DATE	BY
	MAX SIZE 9' x 14'		
	DESIGN LOADS +26.7 PSF -31.6 PSF		
	TEST LOADS +40.1 PSF -47.4 PSF		
	<div style="text-align: center;"> </div>		
	<div style="text-align: center;"> </div>		
	<div style="text-align: center;"> MODEL P500 AMARR OLYMPUS 500 MODEL D500 AMARR DESIGNERS CHOICE DC-500 </div>		
SIZE	DRAWN BY RLR	DATE 12/06/17	DRAWING NUMBER
B	CHECKED BY RLR	DATE 12/06/17	IRC-P509-130-11
	ENTREMATICS 165 CARRIAGE COURT WINSTON-SALEM, NC 27105		SHEET 2 OF 3

5921-G W. Friendly Ave., Greensboro, NC 27410

TABLE 1

HEIGHT	TRACK ATTACHMENT								SPLICE
	A	B	C	D	E	F	G	H	
6' 0"	3.5"	21"	42"						64"
6' 6"	3.5"	21"	42"	63"					70"
7' 0"	3.5"	21"	42"	63"					76"
7' 6"	3.5"	21"	42"	63"					82"
8' 0"	3.5"	21"	42"	63"	84"				88"
8' 6"	3.5"	21"	42"	63"	84"				94"
9' 0"	3.5"	21"	42"	63"	84"				100"
9' 6"	3.5"	21"	42"	63"	84"				106"
10' 0"	3.5"	21"	42"	63"	84"	105"			112"
10' 6"	3.5"	21"	42"	63"	84"	105"			118"
11' 0"	3.5"	21"	42"	63"	84"	105"			124"
11' 6"	3.5"	21"	42"	63"	84"	105"	126"		130"
12' 0"	3.5"	21"	42"	63"	84"	105"	126"		136"
12' 6"	3.5"	21"	42"	63"	84"	105"	126"		142"
13' 0"	3.5"	21"	42"	63"	84"	105"	126"		148"
13' 6"	3.5"	21"	42"	63"	84"	105"	126"	147"	154"
14' 0"	3.5"	21"	42"	63"	84"	105"	126"	147"	160"

ALL TRACK ATTACHMENTS +/- 2" ALLOWED USING SYP OR SPF NO.2 OR BETTER ONLY

TABLE 2

Section	Panel Type	Center Stile Location (Measured from Left Edge)		Max Design Loads Allowed	
		1st (in)	2nd (in)	Positive (PSF)	Negative (PSF)
6'0	Short	24.406	47.594	40.0	47.4
6'0	Designers Choice	24.644	47.357	40.0	47.4
7'0	Short	29.200	54.800	34.3	40.6
7'0	Designers Choice	29.144	54.857	34.3	40.6
7'2	Short	30.200	55.800	33.5	39.6
7'2	Designers Choice	29.894	56.107	33.5	39.6
7'4	Short	31.200	56.800	32.7	38.7
7'4	Designers Choice	30.644	57.357	32.7	38.7
7'6	Short	32.200	57.800	32.0	37.9
7'6	Designers Choice	45.000		32.0	37.9
7'8	Short	32.200	60.000	31.3	37.0
7'8	Designers Choice	46.000		31.3	37.0
7'10	Short	33.000	61.000	30.6	36.3
7'10	Designers Choice	47.000		30.6	36.3
8'0	Short	48.000		30.0	35.5
8'0	Designers Choice	48.000		30.0	35.5
8'2	Short	49.000		29.4	34.8
8'2	Designers Choice	49.000		29.4	34.8
8'4	Short	50.000		28.8	34.1
8'4	Designers Choice	50.000		28.8	34.1
8'6	Short	51.000		28.2	33.4
8'6	Designers Choice	51.000		28.2	33.4
8'8	Short	52.000		27.7	32.8
8'8	Designers Choice	52.000		27.7	32.8
8'10	Short	53.000		27.2	32.1
8'10	Designers Choice	53.000		27.2	32.1
9'0	Short	54.000		26.7	31.6
9'0	Designers Choice	54.000		26.7	31.6

WOOD JAMB ATTACHMENT TO STRUCTURE (OPTIONAL)

2 X 6 VERTICAL JAMB ATTACHMENT TO WOOD FRAME STRUCTURE
 5/16" X 3" LAG SCREWS STARTING 6" FROM ENDS
 THEN 24" O.C. (1 1/2" EMBEDMENT)

2 X 6 VERTICAL JAMB ATTACHMENT TO 2,000 PSI CONCRETE
 HILTI KWIK BOLT 3/8" X 4" STARTING 6" FROM ENDS
 THEN 24" O.C. (2 1/2" EMBEDMENT)

2 X 6 VERTICAL JAMB ATTACHMENT TO 2,000 PSI CONCRETE
 HILTI SLEEVE ANCHOR 3/8" X 2-3/4" STARTING 6" FROM ENDS
 THEN 24" O.C. (1 1/4" EMBEDMENT)

2 X 6 VERTICAL JAMB ATTACHMENT TO HOLLOW C-90 BLOCK
 SIMPSON 1/4" X 3" TITEN SCREWS STARTING 6" FROM ENDS,
 USE PAIRS OF FASTENERS (3" APART)
 AT 24" O.C. (1 1/2" EMBEDMENT)

2 X 6 VERTICAL JAMB ATTACHMENT TO HOLLOW C-90 BLOCK
 HILTI 1/4" X 2-3/4" KWIK-CON II+ SCREWS STARTING 6" FROM ENDS,
 USE PAIRS OF FASTENERS (3" APART) AT 24" O.C. (1 1/4" EMBEDMENT)

2 X 6 VERTICAL JAMB ATTACHMENT TO GROUDED C-90 BLOCK (2000 PSI GROUT)
 HILTI SLEEVE ANCHOR 3/8" X 2-3/4" STARTING 6" FROM ENDS
 THEN 24" O.C. (1 1/4" EMBEDMENT)
 (OR, USE FASTENERS FOR HOLLOW C-90 BLOCK)

*LAGS AND BOLTS CAN BE COUNTERSUNK TO PROVIDE A FLUSH MOUNTING SURFACE.
 *PREPARATION OF WOOD JAMBS BY OTHERS

REV	DESCRIPTION OF REVISIONS	DATE	BY

MAX SIZE
9' x 14'

DESIGN LOADS
+26.7 PSF
-31.6 PSF

TEST LOADS
+40.1 PSF
-47.4 PSF

Thomas L. Shelmerdine, PE (TX PE #85829)
Structural Solutions, PA (TX Firm #F-004063)

TX

Amarr
ENTREMATIc

MODEL P500 AMARR OLYMPUS 500
MODEL D500 AMARR DESIGNERS CHOICE DC-500

SIZE	DRAWN BY	RLR	DATE	12/06/17	DRAWING NUMBER
B	CHECKED BY	RLR	DATE	12/06/17	IRC-P509-130-11

ENTREMATIc
165 CARRIAGE COURT WINSTON-SALEM, NC 27105

SHEET 3 OF 3

5921-G W. Friendly Ave., Greensboro, NC 27410