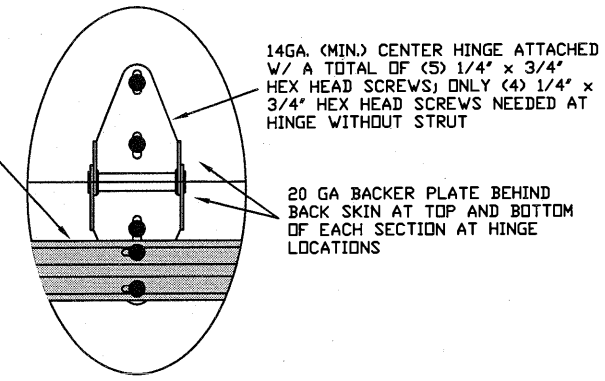
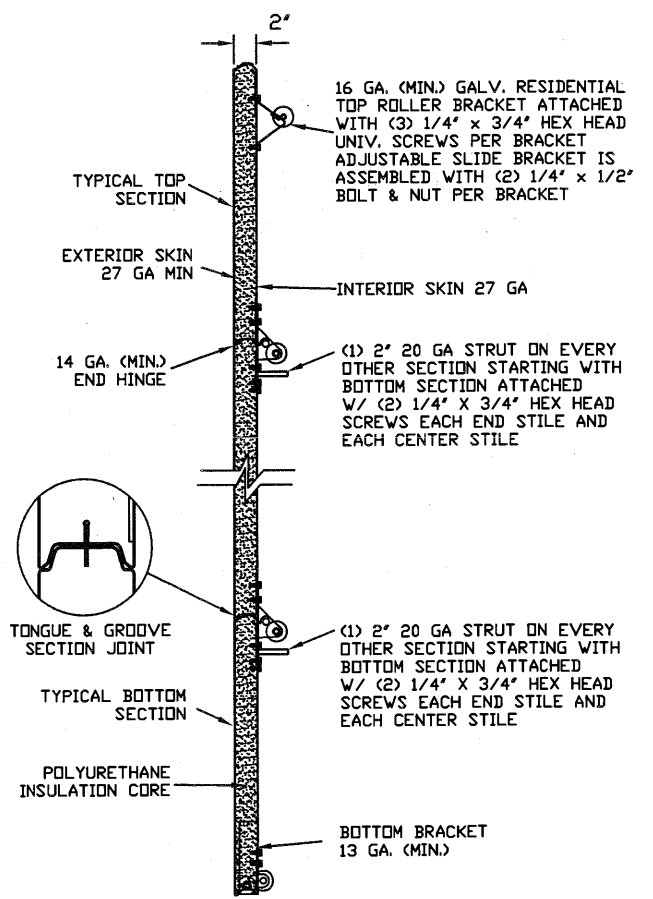


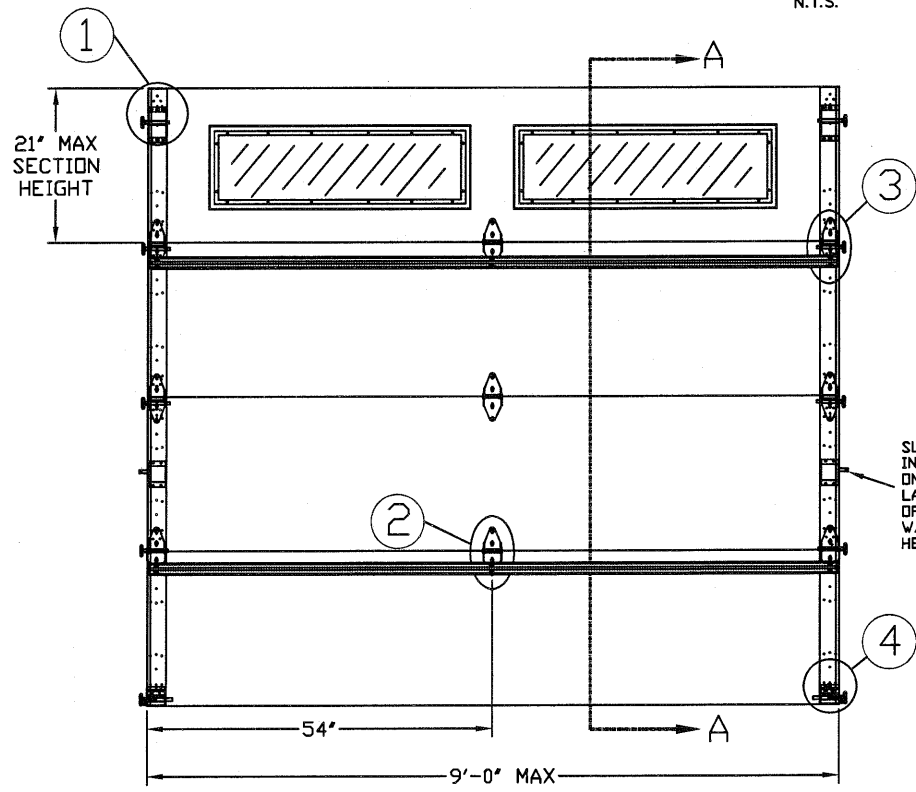
TYPICAL TOP FIXTURES
N.T.S. ①



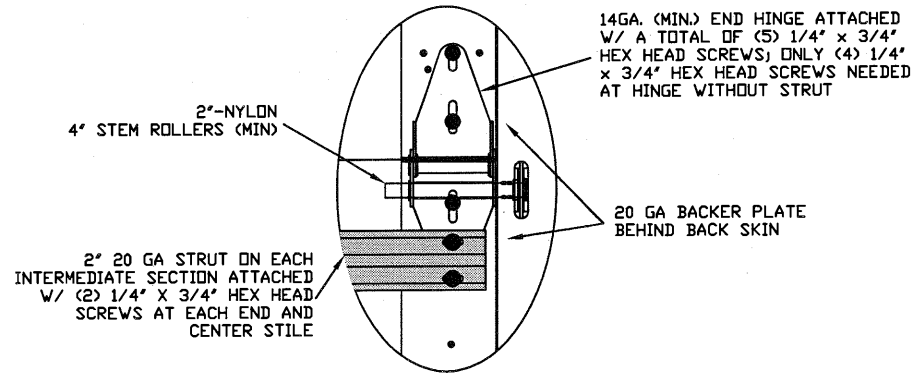
TYPICAL CENTER HINGE
N.T.S. ②



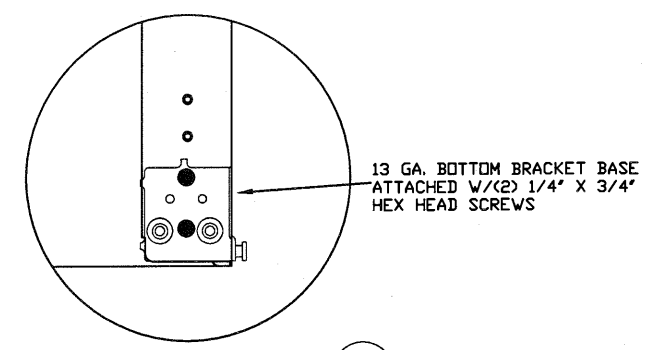
SECTION A-A (SIDE VIEW)
N.T.S.



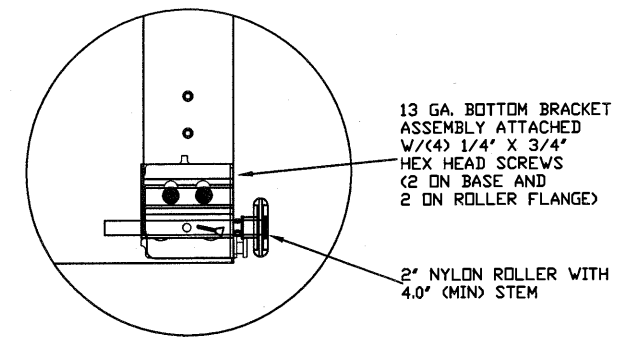
INSIDE ELEVATION
N.T.S.



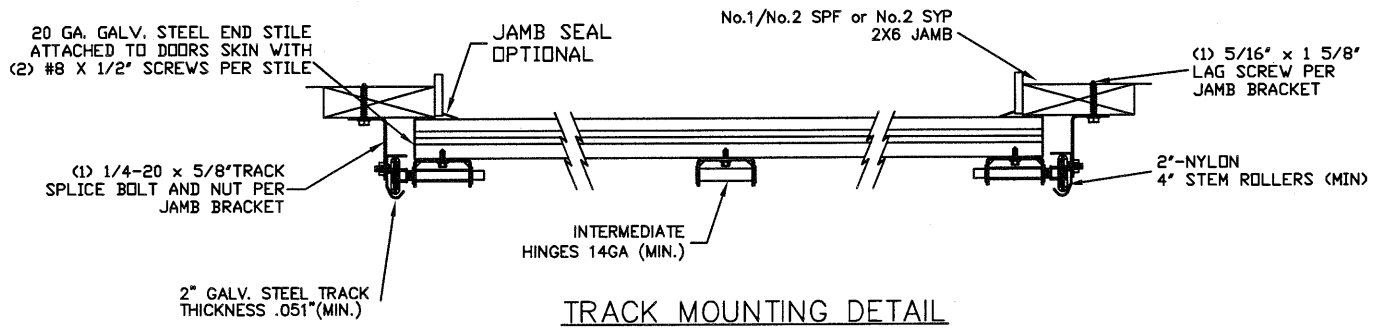
TYPICAL END HINGE
N.T.S. ③



TRBB-375 BOTTOM BRACKET
N.T.S. 4A



TRBB-375 BOTTOM BRACKET
N.T.S. 4B



TRACK MOUNTING DETAIL
N.T.S.

THE METHOD OF TESTING WAS IN SUBSTANTIAL CONFORMANCE WITH THE PROCEDURE DESCRIBED IN ASTM E330 AND DASMA 108. THE PRESSURES SHOWN ON THE DRAWINGS WERE CALCULATED USING ASCE 7-98/02/05 WITH THE FOLLOWING PARAMETERS (5 FEET OF DOOR WIDTH IN THE END ZONE, ROOF AT ANY SLOPE, AND I=1.0):

WIND SPEED (MPH)	120	109	104	99	95
EXPOSURE LEVEL	B	C	C	D	D
MEAN ROOF HEIGHT	30'	15'	25'	15'	25'

REV	DESCRIPTION OF REVISIONS	DATE	BY

MAX SIZE
9' x 14'

DESIGN LOADS
+22.8 PSF
-26.9 PSF

TEST LOADS
+34.2 PSF
-40.4 PSF

Thomas L. Shelmerdine, PE (TX PE #85829)
Structural Solutions, PA (TX Firm #F-004063)

TX

5921-G W. Friendly Ave., Greensboro, NC 27410

ENTREMATIC
165 CARRIAGE COURT WINSTON-SALEM, NC. 27105

**MODEL C500 (CLAMSHELL)
AMARR OLYMPUS**

SIZE	DRAWN BY	RLR	DATE	11/18/15	DRAWING NUMBER
B	CHECKED BY	RLR	DATE	11/18/15	IRC-C509-120-11

SHEET 1 OF 3

TABLE 1

DOOR HEIGHT	TRACK ATTACHMENT						TYPICAL SPLICE
	A	B	C	D	E	F	
7' 0"	10.0"	34"	58"				76"
7' 6"	10.0"	34"	58"				82"
8' 0"	10.0"	34"	58"				88"
9' 0"	10.0"	34"	58"	82"			100"
9' 6"	10.0"	34"	58"	82"			106"
10' 0"	10.0"	34"	58"	82"			112"
11' 0"	10.0"	34"	58"	82"	106"		124"
12' 0"	10.0"	34"	58"	82"	106"		136"
13' 0"	10.0"	34"	58"	82"	106"	130"	148"
14' 0"	10.0"	34"	58"	82"	106"	130"	160"

ALL TRACK ATTACHMENTS +/- 2" ALLOWED USING SYP OR SPF NO.2 OR BETTER ONLY

TABLE 2

Section Width (ft)	Panel Type	Center Stile Location (Measured from Left Edge)		Max Design Loads Allowed	
		1st (in)	2nd (in)	Positive (PSF)	Negative (PSF)
6' 0"	Short	24.406	47.594	34.2	40.3
7' 0"	Short	29.200	54.800	29.3	34.5
7' 2"	Short	30.200	55.800	28.6	33.7
7' 4"	Short	31.200	56.800	27.9	33.0
7' 6"	Short	32.200	57.800	27.3	32.2
7' 8"	Short	32.200	60.000	26.7	31.5
7' 10"	Short	33.000	61.000	26.1	30.9
8' 0"	Short	48.000		25.6	30.2
8' 2"	Short	49.000		25.1	29.6
8' 4"	Short	50.000		24.6	29.0
8' 6"	Short	51.000		24.1	28.4
8' 8"	Short	52.000		23.6	27.9
8' 10"	Short	53.000		23.2	27.4
9' 0"	Short	54.000		22.8	26.9

WOOD JAMB ATTACHMENT TO STRUCTURE (OPTIONAL)

2 X 6 VERTICAL JAMB ATTACHMENT TO WOOD FRAME STRUCTURE
 5/16" X 3" LAG SCREWS STARTING 6" FROM ENDS
 THEN 24" O.C. (1 1/2" EMBEDMENT)

2 X 6 VERTICAL JAMB ATTACHMENT TO 2,000 PSI CONCRETE
 HILTI KWIK BOLT 3/8" X 4" STARTING 6" FROM ENDS
 THEN 24" O.C. (2 1/2" EMBEDMENT)
 HILTI SLEEVE ANCHOR 3/8" X 2-3/4" STARTING 6" FROM ENDS
 THEN 24" O.C. (1 1/4" EMBEDMENT)
 ITW/RAMSET REDHEAD (TRU-BOLT) 3/8" X 4" STARTING 6" FROM ENDS
 THEN 24" O.C. (2 1/2" EMBEDMENT)

2 X 6 VERTICAL JAMB ATTACHMENT TO HOLLOW C-90 BLOCK
 SIMPSON 1/4" X 3" TITEN SCREWS STARTING 6" FROM ENDS,
 USE PAIRS OF FASTENERS (3" APART)
 AT 24" O.C. (1 1/2" EMBEDMENT)
 HILTI 1/4" X 2-3/4" KWIK-CON II+ SCREWS STARTING 6" FROM ENDS,
 USE PAIRS OF FASTENERS (3" APART) AT 24" O.C. (1 1/4" EMBEDMENT)

2 X 6 VERTICAL JAMB ATTACHMENT TO GROUTED C-90 BLOCK (2000 PSI GROUT)
 HILTI SLEEVE ANCHOR 3/8" X 2-3/4" STARTING 6" FROM ENDS
 THEN 24" O.C. (1 1/4" EMBEDMENT)
 (OR, USE FASTENERS FOR HOLLOW C-90 BLOCK)

*LAGS AND BOLTS CAN BE COUNTERSUNK TO PROVIDE A FLUSH MOUNTING SURFACE.
 *PREPARATION OF WOOD JAMBS BY OTHERS

REV	DESCRIPTION OF REVISIONS	DATE	BY

MAX SIZE 9' x 14'
 DESIGN LOADS +22.8 PSF -26.9 PSF
 TEST LOADS +34.2 PSF -40.4 PSF

Thomas L. Shelmerdine, PE (TX PE #85829)
 Structural Solutions, PA (TX Firm #004063)

STATE OF TEXAS
 THOMAS L. SHELMERDINE
 85829
 LICENSED PROFESSIONAL ENGINEER
 TX

5921-G W. Friendly Ave., Greensboro, NC 27410

ENTRE/MATIC
 165 CARRIAGE COURT WINSTON-SALEM, NC. 27105

**MODEL C500 (CLAMSHELL)
 AMARR OLYMPUS**

SIZE	DRAWN BY	RLR	DATE	11/18/15	DRAWING NUMBER
B	CHECKED BY	RLR	DATE	11/18/15	IRC-C509-120-11

SHEET 3 OF 3