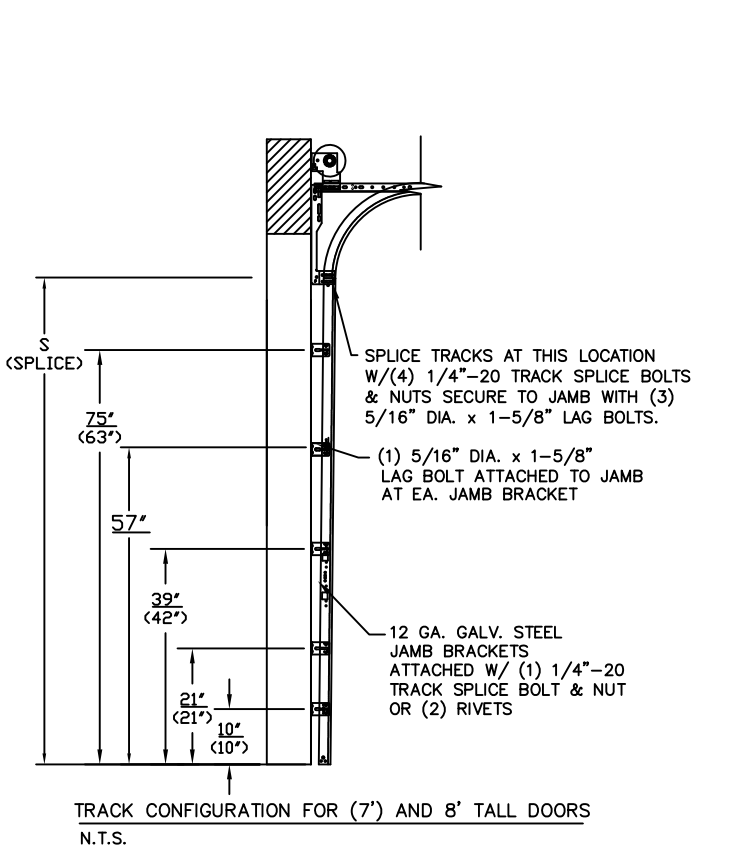


THE METHOD OF TESTING WAS IN SUBSTANTIAL CONFORMANCE WITH THE PROCEDURE DESCRIBED IN ASTM E330 AND DASMA 108. THE PRESSURES SHOWN ON THE DRAWINGS WERE CALCULATED USING ASCE 7-98/02/05 WITH THE FOLLOWING PARAMETERS (5 FEET OF DOOR WIDTH IN THE END ZONE, ROOF AT ANY SLOPE, AND I=1.0):

WIND SPEED (MPH)	155	140	133	127	122
EXPOSURE LEVEL	B	C	C	D	D
MEAN ROOF HEIGHT	30'	15'	25'	15'	25'



REV	DESCRIPTION OF REVISIONS	DATE	BY
A	NOTE 4 SKIN GAUGE CORRECTED	2/21/08	SKW
B	REVISED NOTE 6	9/2/08	BHG
C	REMOVED PRESSURE TABLE / STILE CHART	05/20/09	CBT
D	WIND SPEED TABLE & TRACK CONFIGURATIONS	04/24/12	RLR

MAX SIZE 18' x 8'

DESIGN LOADS +37.0 PSF -40.6 PSF

TEST LOADS (1.5 x DESIGN LOADS) +55.5 PSF -60.8 PSF

STATE OF TEXAS
 06/28/2012
 THOMAS L. SHELDERDINE
 85829
 LICENSED PROFESSIONAL ENGINEER

Amarr GARAGE DOORS

165 CARRIAGE COURT WINSTON-SALEM, N.C. 27105

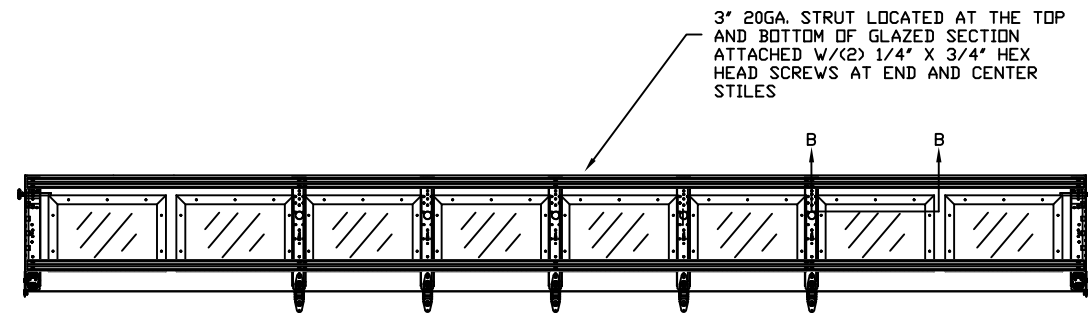
MODEL #650 OAK SUMMIT 1000, 2000
MODEL #600 STRATFORD 1000, 2000
MODEL #950 HERITAGE 1000, 2000
Short, Long, Flush & Oak Summit Panel's

SIZE	DRAWN BY	BHG	DATE	10/04/06	DRAWING NUMBER
B	CHECKED BY	DLJ	DATE	10/04/06	IRC-6018-155-45

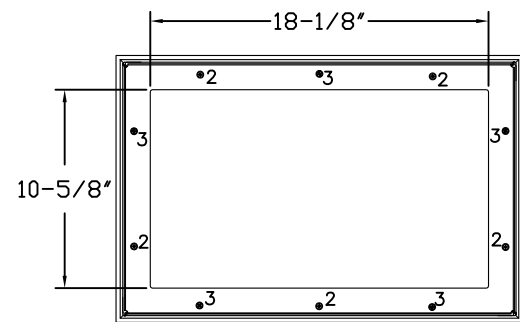
ENGINEER: THOMAS L. SHELDERDINE P.E. LIC. No. 0048579 SHEET 1 OF 3

WOOD JAMB ATTACHMENT TO STRUCTURE

SEE NOTE 1



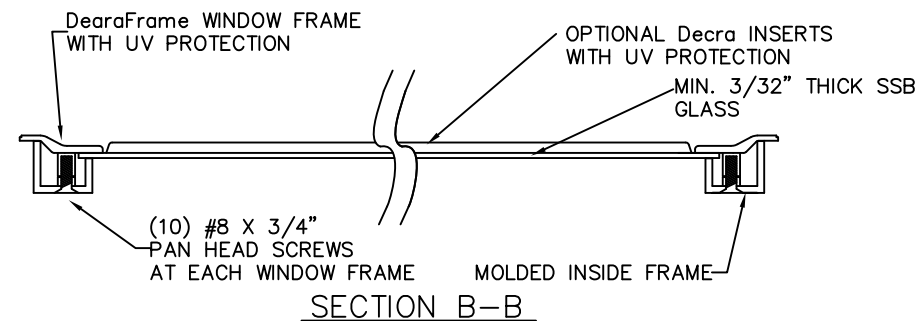
OPTIONAL SHORT PANEL GLAZED SECTION STRUT AND STILE LAYOUT



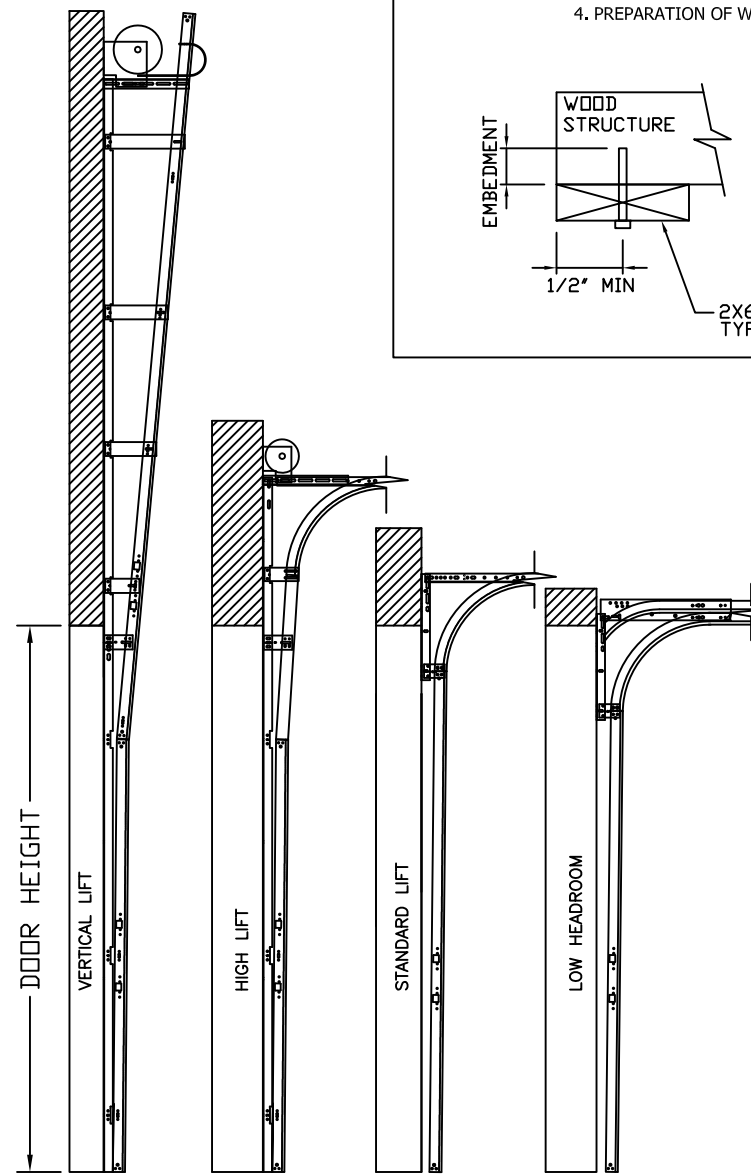
SHORT PANEL GLAZING FASTENER DETAIL
N.T.S.

GLAZING OPTION CROSS SECTION

GLAZING NOT AVAILABLE IN WIND-BORNE DEBRIS REGION
GLAZING MEETS ASTM E1300-04



SECTION B-B



AVAILABLE TRACK CONFIGURATIONS
N.T.S.

2 X 6 VERTICAL JAMB ATTACHMENT TO WOOD FRAME STRUCTURE
5/16" X 3" LAG SCREWS STARTING 6" FROM ENDS THEN 24" O.C. (1 1/2" EMBEDMENT)

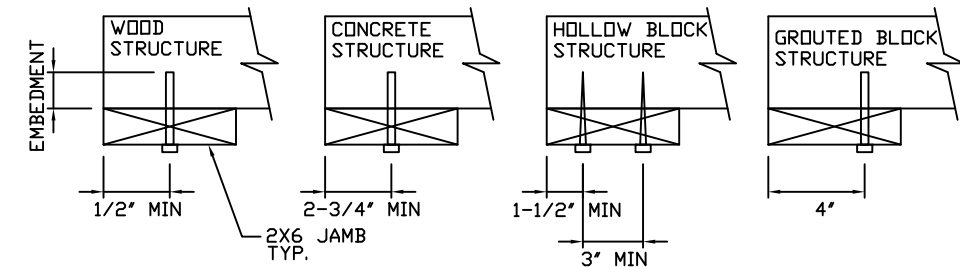
2 X 6 VERTICAL JAMB ATTACHMENT TO 2,000 PSI CONCRETE
HILTI KWIK BOLT 3/8" X 4" STARTING 6" FROM ENDS THEN 24" O.C. (2 1/2" EMBEDMENT)
HILTI SLEEVE ANCHOR 3/8" X 2-3/4" STARTING 6" FROM ENDS THEN 24" O.C. (1 1/4" EMBEDMENT)
ITW/RAMSET REDHEAD (TRU-BOLT) 3/8" X 4" STARTING 6" FROM ENDS THEN 24" O.C. (2 1/2" EMBEDMENT)

2 X 6 VERTICAL JAMB ATTACHMENT TO HOLLOW C-90 BLOCK *SEE NOTE 2*
SIMPSON 1/4" X 3" TITEN SCREWS STARTING 6" FROM ENDS, USE PAIRS OF FASTENERS (3" APART) AT 16" O.C. (1 1/2" EMBEDMENT)
HILTI 1/4" X 2-3/4" KWIK-CON II+ SCREWS STARTING 6" FROM ENDS, USE PAIRS OF FASTENERS (3" APART) AT 16" O.C. (1 1/4" EMBEDMENT)

2 X 6 VERTICAL JAMB ATTACHMENT TO GROUTED C-90 BLOCK (2000 PSI GROUT)
HILTI SLEEVE ANCHOR 3/8" X 2-3/4" STARTING 6" FROM ENDS THEN 24" O.C. (1 1/4" EMBEDMENT) (OR, USE FASTENERS FOR HOLLOW C-90 BLOCK)

NOTES

1. REFER TO DETAIL (6) FOR ADDITIONAL FASTENERS AT HEADER
2. OPTION NOT AVAILABLE FOR HEADER ATTACHMENT
3. LAGS AND BOLTS CAN BE COUNTERSUNK TO PROVIDE A FLUSH MOUNTING SURFACE
4. PREPARATION OF WOOD JAMBS BY OTHERS

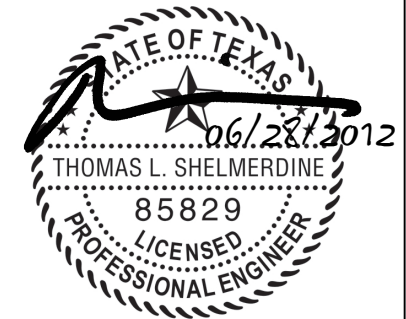


REV	DESCRIPTION OF REVISIONS	DATE	BY
A	NOTE 4 SKIN GAUGE CORRECTED	2/21/08	SKW
B	REVISED NOTE 6	9/2/08	BHG
C	REMOVED PRESSURE TABLE / STILE CHART	05/20/09	CBT
D	WIND SPEED TABLE & TRACK CONFIGURATIONS	04/24/12	RLR

MAX SIZE
18' x 8'

DESIGN LOADS
+37.0 PSF
-40.6 PSF

TEST LOADS
(1.5 x DESIGN LOADS)
+55.5 PSF
-60.8 PSF



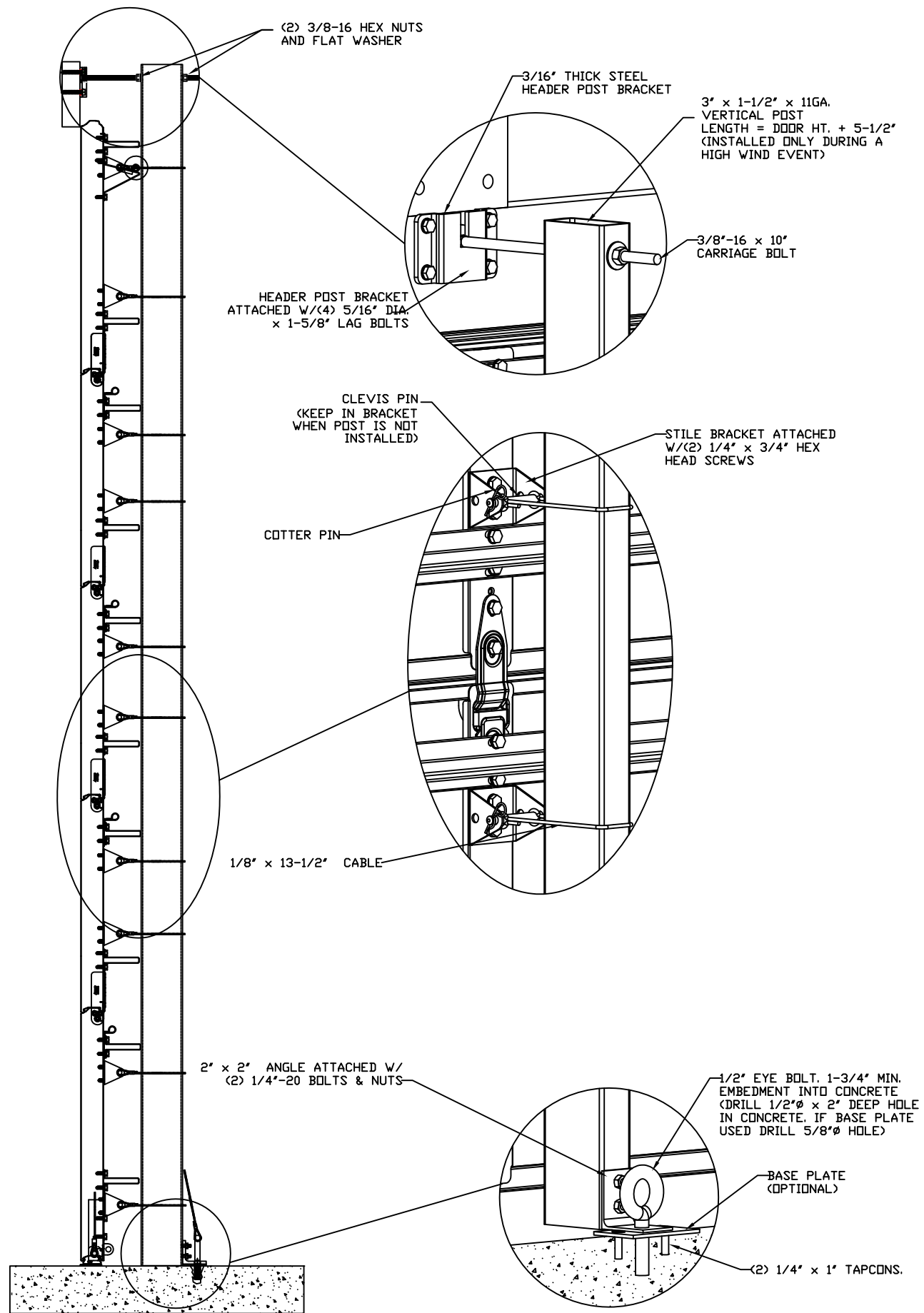
Amarr
GARAGE DOORS

165 CARRIAGE COURT WINSTON-SALEM, N.C. 27105

MODEL #650 OAK SUMMIT 1000, 2000
MODEL #600 STRATFORD 1000, 2000
MODEL #950 HERITAGE 1000, 2000
Short, Long, Flush & Oak Summit Panel's

SIZE	DRAWN BY	BHG	DATE	10/04/06	DRAWING NUMBER
B	CHECKED BY	DLJ	DATE	10/04/06	IRC-6018-155-45

ENGINEER: THOMAS L. SHELMERDINE P.E. LIC. No. 0048579 SHEET 2 OF 3



SECTION A-A (FOR 8' TALL DOOR)
N.T.S.

TABLE 1

Section Width (ft)	Panel Type	Center Stile Locations (Measured from Left Edge)					Max Design Loads Allowed	
		1st (in)	2nd (in)	3rd (in)	4th (in)	5th (in)	Positive (PSF)	Negative (PSF)
16' 0	Short	49.62	72.81	96.00	119.19	142.38	41.4	45.6
16' 0	Long	50.60	73.30	96.00	118.70	141.40	41.4	45.6
16' 0	Oak Summit	48.42	72.21	96.00	119.79	143.58	41.4	45.6
16' 2	Short	50.27	73.64	97.00	120.36	143.73	41.0	45.2
16' 2	Long	51.17	74.08	97.00	119.92	142.83	41.0	45.2
16' 2	Oak Summit	48.75	72.88	97.00	121.13	145.25	41.0	45.2
16' 4	Short	51.27	74.64	98.00	121.36	144.73	40.6	44.7
16' 4	Long	52.17	75.08	98.00	120.92	143.83	40.6	44.7
16' 4	Oak Summit	49.08	73.54	98.00	122.46	146.92	40.6	44.7
16' 6	Short	52.27	75.64	99.00	122.36	145.73	40.2	44.2
16' 6	Long	51.34	75.17	99.00	122.83	146.66	40.2	44.2
16' 6	Oak Summit	49.42	74.21	99.00	123.79	148.59	40.2	44.2
16' 8	Short	51.34	75.67	100.00	124.33	148.66	39.8	43.8
16' 8	Long	52.20	76.10	100.00	123.90	147.80	39.8	43.8
16' 8	Oak Summit	49.92	74.96	100.00	125.04	150.09	39.8	43.8
16' 10	Short	51.50	76.25	101.00	125.75	150.50	39.4	43.4
16' 10	Long	53.20	77.10	101.00	124.90	148.80	39.4	43.4
16' 10	Oak Summit	50.15	75.57	101.00	126.29	151.59	39.4	43.4
17' 0	Short	53.34	77.67	102.00	126.33	150.66	39.0	42.9
17' 0	Long	54.20	78.10	102.00	125.90	149.80	39.0	42.9
17' 0	Oak Summit	50.92	76.46	102.00	127.54	153.09	39.0	42.9
17' 2	Short	53.00	78.00	103.00	128.00	153.00	38.6	42.5
17' 2	Long	55.20	79.10	103.00	126.90	150.80	38.6	42.5
17' 2	Oak Summit	51.42	77.21	103.00	128.79	154.59	38.6	42.5
17' 4	Short	54.00	79.00	104.00	129.00	154.00	38.2	42.1
17' 4	Long	56.20	80.10	104.00	127.90	151.80	38.2	42.1
17' 4	Oak Summit	51.92	77.96	104.00	130.04	156.09	38.2	42.1
17' 6	Short	55.00	80.00	105.00	130.00	155.00	37.9	41.7
17' 6	Long	57.20	81.10	105.00	128.90	152.80	37.9	41.7
17' 6	Oak Summit	52.42	78.71	105.00	131.29	157.59	37.9	41.7
17' 8	Short	54.80	80.40	106.00	131.60	157.20	37.5	41.3
17' 8	Long	55.80	80.90	106.00	131.10	156.20	37.5	41.3
17' 8	Oak Summit	52.92	79.46	106.00	132.54	159.09	37.5	41.3
17' 10	Short	55.80	81.40	107.00	132.60	158.20	37.2	40.9
17' 10	Long	56.25	81.63	107.00	132.38	157.75	37.2	40.9
17' 10	Oak Summit	53.42	80.21	107.00	133.79	160.59	37.2	40.9
18' 0	Short	57.25	82.63	108.00	133.38	158.75	37.0	40.6
18' 0	Long	57.80	82.90	108.00	133.10	158.20	37.0	40.6
18' 0	Oak Summit	53.92	80.96	108.00	135.04	162.09	37.0	40.6

REV	DESCRIPTION OF REVISIONS	DATE	BY
A	NOTE 4 SKIN GAUGE CORRECTED	2/21/08	SKW
B	REVISED NOTE 6	9/2/08	BHG
C	REMOVED PRESSURE TABLE / STILE CHART	05/20/09	CBT
D	WIND SPEED TABLE & TRACK CONFIGURATIONS	04/24/12	RLR

MAX SIZE
18' x 8'

DESIGN LOADS
+37.0 PSF
-40.6 PSF

TEST LOADS
(1.5 x DESIGN LOADS)
+55.5 PSF
-60.8 PSF

Amarr
GARAGE DOORS

165 CARRIAGE COURT WINSTON-SALEM, N.C. 27105

MODEL #650 OAK SUMMIT 1000, 2000
MODEL #600 STRATFORD 1000, 2000
MODEL #950 HERITAGE 1000, 2000
Short, Long, Flush & Oak Summit Panel's

SIZE	DRAWN BY	BHG	DATE	10/04/06	DRAWING NUMBER
B	CHECKED BY	DLJ	DATE	10/04/06	IRC-6018-155-45

ENGINEER: THOMAS L. SHELMERDINE P.E. LIC. No. 0048579 SHEET 3 OF 3