

SPECIFICATIONS AND NOTES

- ALL THE LOAD FROM THE DOOR IS TRANSFERRED TO THE VERTICAL TRACK. FROM THE TRACK THE LOAD IS TRANSFERRED TO THE VERTICAL JAMBS. THE HORIZONTAL JAMB OR HEADER RECEIVES NO PORTION OF THE LOAD TRANSFERRED FROM THE DOOR.
- EACH VERTICAL JAMB RECEIVES MAXIMUM DESIGN LOADS OF: +194.4 LBS/FT & -220.5 LBS/FT
- DOORS AND HARDWARE WILL BE DESIGNED, MANUFACTURED AND INSTALLED WITH STANDARDS AS SET FORTH BY DASMA.
- DOOR SECTIONS SHALL BE 25 GA. MIN. (.019") ROLLED FORMED LIGHT COMMERCIAL QUALITY
- SUPPORTING STRUCTURAL ELEMENTS SHALL BE DESIGNED BY A REGISTERED PROFESSIONAL ENGINEER FOR WIND LOADS INDICATED ON THIS DRAWING IN ADDITION TO OTHER LOADINGS.
- REFER TO TABLES ON PAGE 3 FOR ADDITIONAL DOOR WIDTHS AND THEIR DESIGN PRESSURES

REV	DESCRIPTION OF REVISIONS	DATE	BY
A	UPDATED BOTTOM BRACKET INFORMATION ADDED OAKSUMMIT AND GLAZING OPTIONS	08/30/05	DLJ
B	REVISED NOTE 6	09/02/08	DLJ
C	WIND SPEED TABLE & TRACK CONFIGURATIONS	04/23/12	RLR
D	CHANGED STRUT CONFIGURATION & TRACK GAUGE	01/14/13	RLR

MAX SIZE
18' WIDTH
14' HEIGHT
(DOOR HEIGHT SUBJECT TO WEIGHT LIMITATIONS)

DESIGN LOADS
+21.6 PSF
-24.5 PSF

TEST LOADS
(1.5 x DESIGN LOADS)
+32.4 PSF
-36.8 PSF

Thomas L. Shelmerdine, PE (TX PE #85829)
Structural Solutions, PA (TX Firm #F-004063)

STATE OF TEXAS
THOMAS L. SHELMERDINE
85829
LICENSED PROFESSIONAL ENGINEER
TX

dba Structural Solutions of North Carolina, Inc.
5921-G W. Friendly Ave., Greensboro, NC 27410

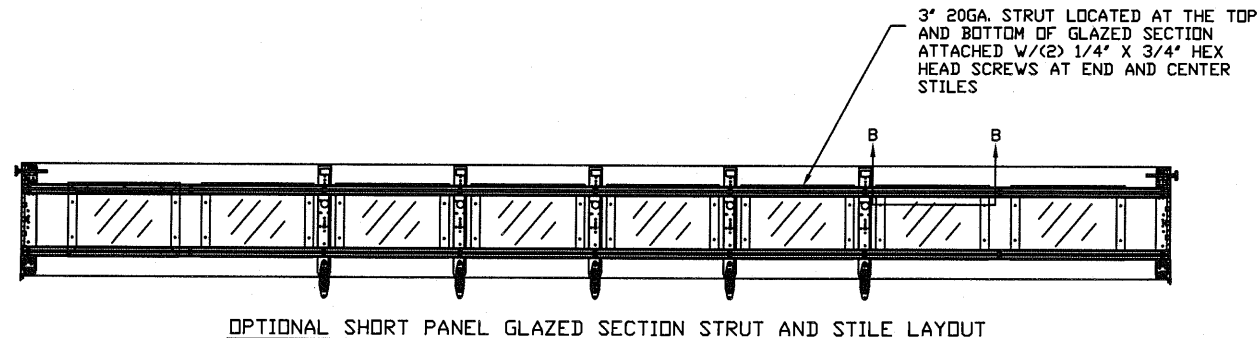
Amarr

165 CARRIAGE COURT WINSTON-SALEM, N.C. 27105

MODEL #650 OAK SUMMIT w/DuraSafe
MODEL #600 STRATFORD w/DuraSafe
MODEL #950 HERITAGE w/DuraSafe
Short, Long, Flush & Oak Summit Panel's

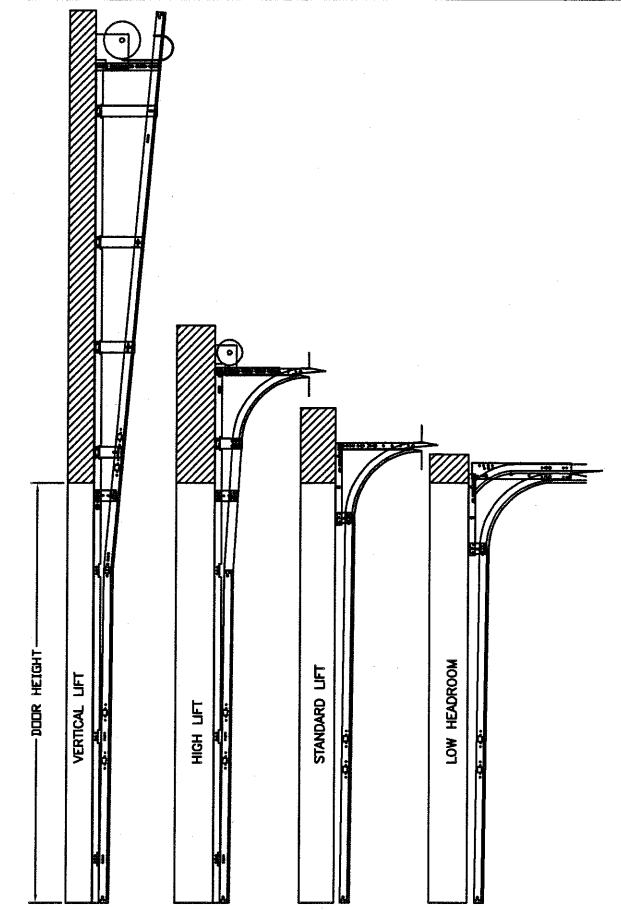
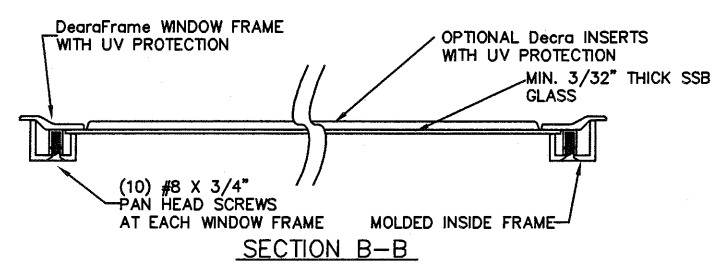
SIZE	DRAWN BY	DLJ	DATE	10/16/03	DRAWING NUMBER
B	CHECKED BY	AAE	DATE	10/16/03	IRC-6018-120-15

SHEET 1 OF 3

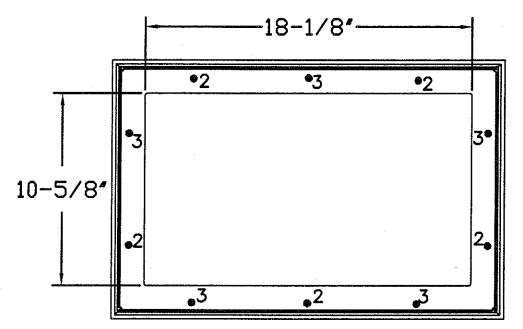


OPTIONAL SHORT PANEL GLAZED SECTION STRUT AND STILE LAYOUT

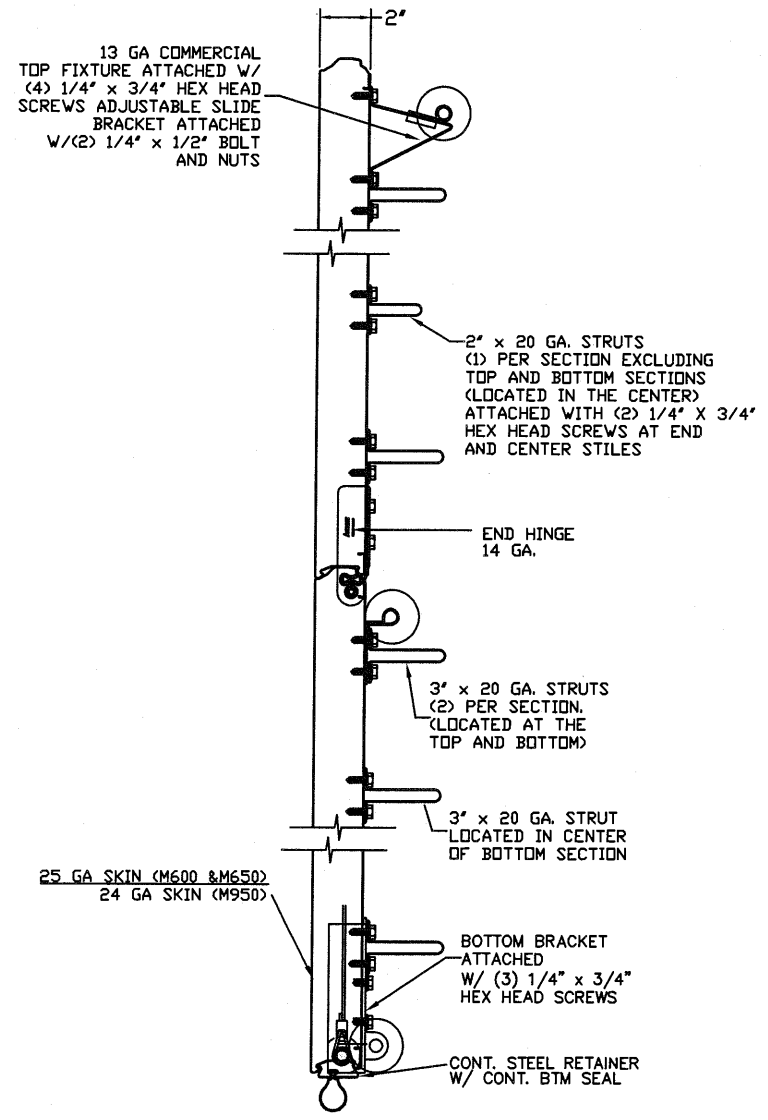
GLAZING OPTION CROSS SECTION
 GLAZING NOT AVAILABLE IN WIND-BORNE DEBRIS REGION
 GLAZING MEETS ASTM E1300-04



AVAILABLE TRACK CONFIGURATIONS
N.T.S.



SHORT PANEL GLAZING FASTENER DETAIL
N.T.S.



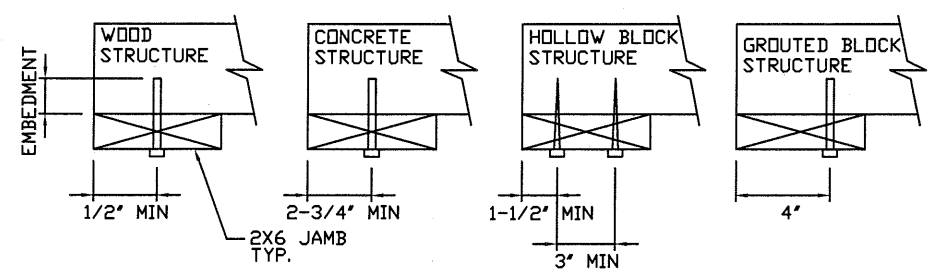
SECTION A-A (SIDE VIEW)
N.T.S.

WOOD JAMB ATTACHMENT TO STRUCTURE

2 X 6 VERTICAL JAMB ATTACHMENT TO WOOD FRAME STRUCTURE
 5/16" X 3" LAG SCREWS STARTING 6" FROM ENDS THEN 24" O.C. (1 1/2" EMBEDMENT)
2 X 6 VERTICAL JAMB ATTACHMENT TO 2,000 PSI CONCRETE
 HILTI KWIK BOLT 3/8" X 4" STARTING 6" FROM ENDS THEN 24" O.C. (2 1/2" EMBEDMENT)
 HILTI SLEEVE ANCHOR 3/8" X 2-3/4" STARTING 6" FROM ENDS THEN 22" O.C. (1 1/4" EMBEDMENT)
 ITW/RAMSET REDHEAD (TRU-BOLT) 3/8" X 4" STARTING 6" FROM ENDS THEN 24" O.C. (2 1/2" EMBEDMENT)
2 X 6 VERTICAL JAMB ATTACHMENT TO HOLLOW C-90 BLOCK
 SIMPSON 1/4" X 3" TITEN SCREWS STARTING 6" FROM ENDS, USE PAIRS OF FASTENERS (3" APART) AT 16" O.C. (1 1/2" EMBEDMENT)
 HILTI 1/4" X 2-3/4" KWIK-CON II+ SCREWS STARTING 6" FROM ENDS, USE PAIRS OF FASTENERS (3" APART) AT 16" O.C. (1 1/4" EMBEDMENT)

2 X 6 VERTICAL JAMB ATTACHMENT TO GROUTED C-90 BLOCK (2000 PSI GROUT)
 HILTI SLEEVE ANCHOR 3/8" X 2-3/4" STARTING 6" FROM ENDS THEN 24" O.C. (1 1/4" EMBEDMENT) (OR, USE FASTENERS FOR HOLLOW C-90 BLOCK)

*LAGS AND BOLTS CAN BE COUNTERSUNK TO PROVIDE A FLUSH MOUNTING SURFACE.
 *PREPARATION OF WOOD JAMBS BY OTHERS



REV	DESCRIPTION OF REVISIONS	DATE	BY
A	UPDATED BOTTOM BRACKET INFORMATION ADDED OAKSUMMIT AND GLAZING OPTIONS	08/30/05	DLJ
B	REVISED NOTE 6	09/02/08	DLJ
C	WIND SPEED TABLE & TRACK CONFIGURATIONS	04/23/12	RLR
D	CHANGED STRUT CONFIGURATION & TRACK GAUGE	01/14/13	RLR

MAX SIZE
18' WIDTH
14' HEIGHT
(DOOR HEIGHT SUBJECT TO WEIGHT LIMITATIONS)

DESIGN LOADS
+21.6 PSF
-24.5 PSF

TEST LOADS
(1.5 x DESIGN LOADS)
+32.4 PSF
-36.8 PSF

Thomas L. Shelmerdine, PE (TX PE #85829)
Structural Solutions, PA (TX Firm #F-004063)

TX

dba Structural Solutions of North Carolina, Inc.
5921-G W. Friendly Ave., Greensboro, NC 27410

Amarr
165 CARRIAGE COURT WINSTON-SALEM, N.C. 27105

MODEL #650 OAK SUMMIT w/DuraSafe
MODEL #600 STRATFORD w/DuraSafe
MODEL #950 HERITAGE w/DuraSafe
Short, Long, Flush & Oak Summit Panel's

SIZE	DRAWN BY	DLJ	DATE	10/16/03	DRAWING NUMBER
B	CHECKED BY	AAE	DATE	10/16/03	IRC-6018-120-15

SHEET 2 OF 3

TABLE 1

DOOR HEIGHT	SECTION HEIGHTS							
	Btm	#2	#3	#4	#5	#6	#7	#8
14' 0"	21"	21"	21"	21"	21"	21"	21"	21"
13' 6"	21"	21"	21"	21"	21"	18"	18"	21"
13' 0"	21"	21"	21"	18"	18"	18"	18"	21"
12' 6"	21"	18"	18"	18"	18"	18"	18"	21"
12' 0"	21"	21"	21"	21"	21"	18"	21"	
11' 6"	21"	21"	21"	18"	18"	18"	21"	
11' 0"	21"	18"	18"	18"	18"	18"	21"	
10' 6"	21"	21"	21"	21"	21"	21"		
10' 0"	21"	21"	21"	18"	18"	21"		
9' 6"	21"	18"	18"	18"	18"	21"		
9' 0"	18"	18"	18"	18"	18"	18"		
8' 6"	21"	21"	21"	18"	21"			
8' 0"	21"	18"	18"	18"	21"			
7' 6"	18"	18"	18"	18"	18"			
7' 0"	21"	21"	21"	21"				
6' 6"	21"	18"	18"	21"				

TABLE 2

DOOR HEIGHT	TRACK ATTACHMENT								SPLICE
	A	B	C	D	E	F	G	H	
6' 6"	10"	21"	39"	57"					70"
7'	10"	21"	38"	63"					76"
7' 6"	10"	18"	36"	54"	72"				82"
8'	10"	21"	39"	57"	75"				88"
8' 6"	10"	21"	42"	63"	81"				94"
9'	10"	18"	36"	54"	72"	90"			100"
9' 6"	10"	21"	39"	57"	75"	93"			106"
10'	10"	21"	42"	63"	81"	99"			112"
10' 6"	10"	21"	42"	63"	84"	105"			118"
11'	10"	21"	39"	57"	75"	93"	111"		124"
11' 6"	10"	21"	42"	63"	81"	99"	117"		130"
12'	10"	21"	42"	63"	84"	105"	123"		136"
12' 6"	10"	21"	39"	57"	75"	93"	111"	129"	142"
13'	10"	21"	42"	63"	81"	99"	117"	135"	148"
13' 6"	10"	21"	42"	63"	84"	105"	123"	141"	154"
14'	10"	21"	42"	63"	84"	105"	126"	147"	160"

ALL TRACK ATTACHMENT SPACING +/-2' ALLOWED WITH SYP NO.2 OR BETTER

TABLE 3

Section Width (ft)	Panel Type	Center Stile Locations (Measured from Left Edge)				
		1st (in)	2st (in)	3rd (in)	4th (in)	5th (in)
16' 2	Short	50.27	73.64	97.00	120.36	143.73
16' 2	Long	51.17	74.08	97.00	119.92	142.83
16' 2	Oak Summit	48.75	72.88	97.00	121.13	145.25
16' 4	Short	51.27	74.64	98.00	121.36	144.73
16' 4	Long	52.17	75.08	98.00	120.92	143.83
16' 4	Oak Summit	49.08	73.54	98.00	122.46	146.92
16' 6	Short	52.27	75.64	99.00	122.36	145.73
16' 6	Long	51.34	75.17	99.00	122.83	146.66
16' 6	Oak Summit	49.42	74.21	99.00	123.79	148.59
16' 8	Short	51.34	75.67	100.00	124.33	148.66
16' 8	Long	52.20	76.10	100.00	123.90	147.80
16' 8	Oak Summit	49.92	74.96	100.00	125.04	150.09
16' 10	Short	51.50	76.25	101.00	125.75	150.50
16' 10	Long	53.20	77.10	101.00	124.90	148.80
16' 10	Oak Summit	50.15	75.57	101.00	126.29	151.59
17' 0	Short	53.34	77.67	102.00	126.33	150.66
17' 0	Long	54.20	78.10	102.00	125.90	149.80
17' 0	Oak Summit	50.92	76.46	102.00	127.54	153.09
17' 2	Short	53.00	78.00	103.00	128.00	153.00
17' 2	Long	55.20	79.10	103.00	126.90	150.80
17' 2	Oak Summit	51.42	77.21	103.00	128.79	154.59
17' 4	Short	54.00	79.00	104.00	129.00	154.00
17' 4	Long	56.20	80.10	104.00	127.90	151.80
17' 4	Oak Summit	51.92	77.96	104.00	130.04	156.09
17' 6	Short	55.00	80.00	105.00	130.00	155.00
17' 6	Long	57.20	81.10	105.00	128.90	152.80
17' 6	Oak Summit	52.42	78.71	105.00	131.29	157.59
17' 8	Short	54.80	80.40	106.00	131.60	157.20
17' 8	Long	55.80	80.90	106.00	131.10	156.20
17' 8	Oak Summit	52.92	79.46	106.00	132.54	159.09
17' 10	Short	55.80	81.40	107.00	132.60	158.20
17' 10	Long	56.25	81.63	107.00	132.38	157.75
17' 10	Oak Summit	53.42	80.21	107.00	133.79	160.59
18' 0	Short	57.25	82.63	108.00	133.38	158.75
18' 0	Long	57.80	82.90	108.00	133.10	158.20
18' 0	Oak Summit	53.92	80.96	108.00	135.04	162.09

TABLE 4

Section Width (ft)	Panel Type	Max Design Loads Allowed	
		Positive (PSF)	Negative (PSF)
16' 2	Short	23.9	27.1
16' 2	Long	23.9	27.1
16' 2	Oak Summit	23.9	27.1
16' 4	Short	23.7	26.9
16' 4	Long	23.7	26.8
16' 4	Oak Summit	23.7	26.9
16' 6	Short	23.4	26.6
16' 6	Long	23.4	26.6
16' 6	Oak Summit	23.4	26.6
16' 8	Short	23.2	26.3
16' 8	Long	23.2	26.3
16' 8	Oak Summit	23.2	26.3
16' 10	Short	23.0	26.1
16' 10	Long	23.0	26.1
16' 10	Oak Summit	23.0	26.1
17' 0	Short	22.8	25.8
17' 0	Long	22.7	25.8
17' 0	Oak Summit	22.8	25.8
17' 2	Short	22.5	25.6
17' 2	Long	22.4	25.5
17' 2	Oak Summit	22.5	25.6
17' 4	Short	22.3	25.3
17' 4	Long	22.2	25.1
17' 4	Oak Summit	22.3	25.3
17' 6	Short	22.1	25.1
17' 6	Long	21.9	24.8
17' 6	Oak Summit	22.1	25.1
17' 8	Short	21.9	24.8
17' 8	Long	21.9	24.8
17' 8	Oak Summit	21.9	24.8
17' 10	Short	21.7	24.6
17' 10	Long	21.7	24.6
17' 10	Oak Summit	21.7	24.6
18' 0	Short	21.6	24.5
18' 0	Long	21.5	24.4
18' 0	Oak Summit	21.6	24.5

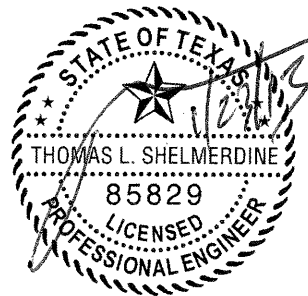
REV	DESCRIPTION OF REVISIONS	DATE	BY
A	UPDATED BOTTOM BRACKET INFORMATION ADDED OAKSUMMIT AND GLAZING OPTIONS	08/30/05	DLJ
B	REVISED NOTE 6	09/02/08	DLJ
C	WIND SPEED TABLE & TRACK CONFIGURATIONS	04/23/12	RLR
D	CHANGED STRUT CONFIGURATION & TRACK GAUGE	01/14/13	RLR

MAX SIZE 18' WIDTH 14' HEIGHT (DOOR HEIGHT SUBJECT TO WEIGHT LIMITATIONS)

DESIGN LOADS +21.6 PSF -24.5 PSF

TEST LOADS (1.5 x DESIGN LOADS) +32.4 PSF -36.8 PSF

Thomas L. Shelmerdine, PE (TX PE #85829) Structural Solutions, PA (TX Firm #F-004063)



TX

dba Structural Solutions of North Carolina, Inc. 5921-G.W. Friendly Ave., Greensboro, NC 27410

Amarr

165 CARRIAGE COURT WINSTON-SALEM, N.C. 27105

MODEL #650 OAK SUMMIT w/DuraSafe
 MODEL #600 STRATFORD w/DuraSafe
 MODEL #950 HERITAGE w/DuraSafe
 Short, Long, Flush & Oak Summit Panel's

SIZE	DRAWN BY	DATE	DRAWING NUMBER
B	DLJ	10/16/03	IRC-6018-120-15
	CHECKED BY	AAE	DATE 10/16/03