

INSIDE ELEVATION
N.T.S.

SECTION A-A (SIDE VIEW)
N.T.S.

TYPICAL DURASAFE END HINGE
N.T.S.

TYPICAL BOTTOM BRACKET
N.T.S.

TRACK MOUNTING DETAIL
N.T.S.

THE METHOD OF TESTING WAS IN SUBSTANTIAL CONFORMANCE WITH THE PROCEDURE DESCRIBED IN ASTM E330 AND DASMA 108. THE PRESSURES SHOWN ON THE DRAWINGS WERE CALCULATED USING ASCE 7-98/02/05 WITH THE FOLLOWING PARAMETERS (5 FEET OF DOOR WIDTH IN THE END ZONE, ROOF AT ANY SLOPE, AND I=1.0):

WIND SPEED (MPH)	130	118	112	107	103
EXPOSURE LEVEL	B	C	C	D	D
MEAN ROOF HEIGHT	30'	15'	25'	15'	25'

- SPECIFICATIONS AND NOTES**
- ALL THE LOAD FROM THE DOOR IS TRANSFERRED TO THE VERTICAL TRACK, FROM THE TRACK THE LOAD IS TRANSFERRED TO THE VERTICAL JAMBS. THE HORIZONTAL JAMB OR HEADER RECEIVES NO PORTION OF THE LOAD TRANSFERRED FROM THE DOOR.
 - EACH VERTICAL JAMB RECEIVES MAXIMUM DESIGN LOADS OF: +204.8 LBS/FT & -232.8 LBS/FT
 - DOORS AND HARDWARE WILL BE DESIGNED, MANUFACTURED AND INSTALLED WITH STANDARDS AS SET FORTH BY DASMA.
 - DOOR SECTIONS SHALL BE 25 GA. MIN. (.019") ROLLED FORMED LIGHT COMMERCIAL QUALITY
 - SUPPORTING STRUCTURAL ELEMENTS SHALL BE DESIGNED BY A REGISTERED PROFESSIONAL ENGINEER FOR WIND LOADS INDICATED ON THIS DRAWING IN ADDITION TO OTHER LOADINGS.
 - REFER TO TABLES ON THE PAGE 3 FOR ADDITIONAL DOOR WIDTHS AND THEIR DESIGN PRESSURES

REV	DESCRIPTION OF REVISIONS	DATE	BY

MAX SIZE
16' WIDTH
14' HEIGHT

(DOOR HEIGHT SUBJECT TO WEIGHT LIMITATIONS)
DESIGN LOADS
+25.6 PSF
-29.1 PSF

TEST LOADS
+38.4 PSF
-43.6 PSF

Thomas L. Shelmerdine, PE (TX PE #85829)
Structural Solutions, PA (TX Firm #F-004063)

STATE OF TEXAS
THOMAS L. SHELMERDINE
85829
LICENSED PROFESSIONAL ENGINEER
TX

5921-G W. Friendly Ave., Greensboro, NC 27410

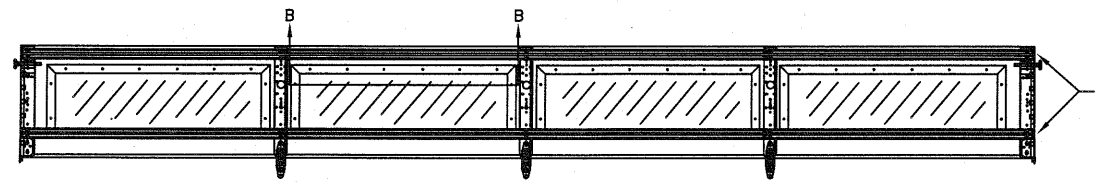
Amarr
ENTRE/MATIC
165 CARRIAGE COURT WINSTON-SALEM, N.C. 27105

MODEL #650 OAK SUMMIT w/DuraSafe
MODEL #600 STRATFORD w/DuraSafe
MODEL #950 HERITAGE w/DuraSafe
Short, Long, Flush & Oak Summit Panel's

SIZE	DRAWN BY	RLR	DATE	05/22/14	DRAWING NUMBER
B	CHECKED BY		DATE		IRC-6016-130-15-P

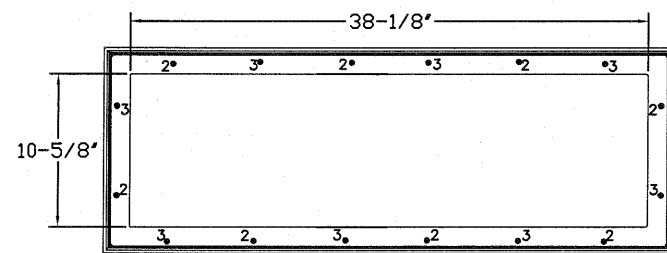
SHEET 1 OF 3

WOOD JAMB ATTACHMENT TO STRUCTURE



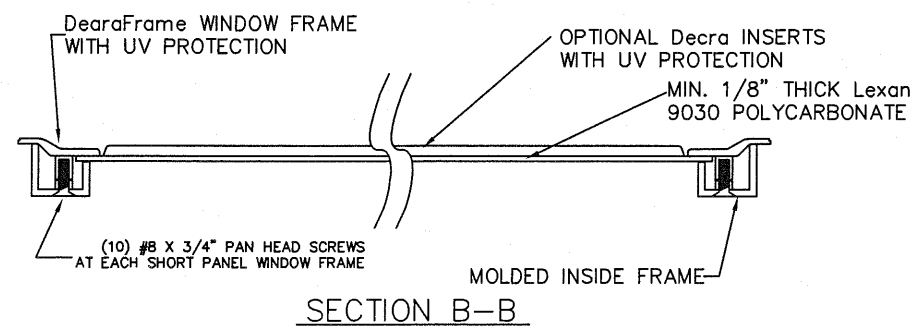
3" 20GA. STRUT LOCATED ON THE TOP AND BOTTOM OF GLAZED SECTION ATTACHED W/ (2) 1/4" X 3/4" HEX HEAD SCREWS AT END AND CENTER STILES

LONG PANEL TOP GLAZED SECTION (STRUT AND STILE LAYOUTS)



LONG PANEL GLAZING FASTENER DETAIL
N.T.S.

GLAZING OPTION CROSS SECTION GLAZING NOT AVAILABLE IN WIND-BORNE DEBRIS REGION

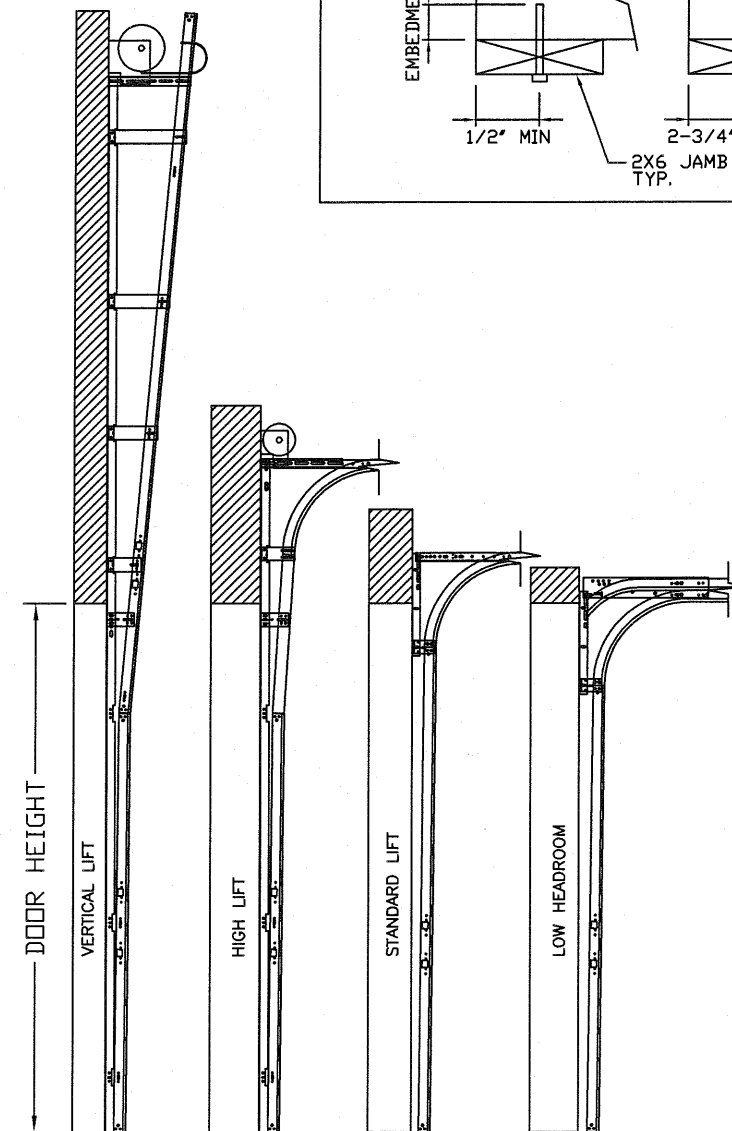
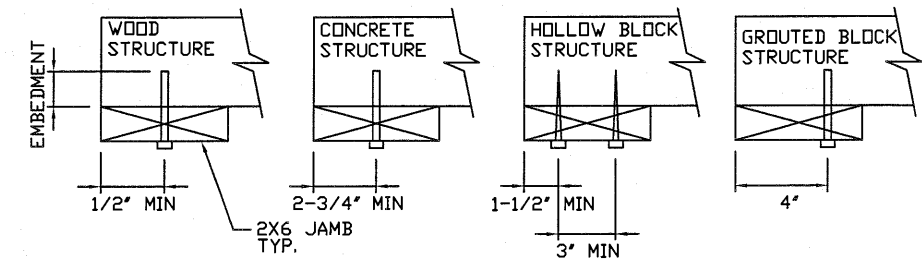


SECTION B-B

2 X 6 VERTICAL JAMB ATTACHMENT TO WOOD FRAME STRUCTURE
 5/16" X 3" LAG SCREWS STARTING 6" FROM ENDS THEN 24" O.C. (1 1/2" EMBEDMENT)
2 X 6 VERTICAL JAMB ATTACHMENT TO 2,000 PSI CONCRETE
 HILTI KWIK BOLT 3/8" X 4" STARTING 6" FROM ENDS THEN 24" O.C. (2 1/2" EMBEDMENT)
 HILTI SLEEVE ANCHOR 3/8" X 2-3/4" STARTING 6" FROM ENDS THEN 20" O.C. (1 1/4" EMBEDMENT)
 ITW/RAMSET REDHEAD (TRU-BOLT) 3/8" X 4" STARTING 6" FROM ENDS THEN 24" O.C. (2 1/2" EMBEDMENT)
2 X 6 VERTICAL JAMB ATTACHMENT TO HOLLOW C-90 BLOCK
 SIMPSON 1/4" X 3" TITEN SCREWS STARTING 6" FROM ENDS, USE PAIRS OF FASTENERS (3" APART) AT 16" O.C. (1 1/2" EMBEDMENT)
 HILTI 1/4" X 2-3/4" KWIK-CON II+ SCREWS STARTING 6" FROM ENDS, USE PAIRS OF FASTENERS (3" APART) AT 16" O.C. (1 1/4" EMBEDMENT)

2 X 6 VERTICAL JAMB ATTACHMENT TO GROUTED C-90 BLOCK (2000 PSI GROUT)
 HILTI SLEEVE ANCHOR 3/8" X 2-3/4" STARTING 6" FROM ENDS THEN 24" O.C. (1 1/4" EMBEDMENT) (OR, USE FASTENERS FOR HOLLOW C-90 BLOCK)

*LAGS AND BOLTS CAN BE COUNTERSUNK TO PROVIDE A FLUSH MOUNTING SURFACE.
 *PREPARATION OF WOOD JAMBS BY OTHERS



AVAILABLE TRACK CONFIGURATIONS
N.T.S.

REV	DESCRIPTION OF REVISIONS	DATE	BY
MAX SIZE 16' WIDTH 14' HEIGHT (DOOR HEIGHT SUBJECT TO WEIGHT LIMITATIONS) DESIGN LOADS +25.6 PSF -29.1 PSF TEST LOADS +38.4 PSF -43.6 PSF		Thomas L. Shelmerdine, PE (TX PE #85829) Structural Solutions, PA (TX Firm #F-004063)	
		TX 	
ENTREMATIC 165 CARRIAGE COURT WINSTON-SALEM, N.C. 27105			
MODEL #650 OAK SUMMIT w/DuraSafe MODEL #600 STRATFORD w/DuraSafe MODEL #950 HERITAGE w/DuraSafe Short, Long, Flush & Oak Summit Panel's			
SIZE	DRAWN BY	RLR	DATE 05/22/14
B	CHECKED BY		DATE
			DRAWING NUMBER
			IRC-6016-130-15-P
SHEET 2 OF 3			

5921-G W. Friendly Ave., Greensboro, NC 27410

TABLE 4

Section	Panel Type	Center Stile Locations (Measured from Left Edge)							Max Design Loads Allowed	
		1st (in)	2nd (in)	3rd (in)	4th (in)	5th (in)	6th (in)	7th (in)	Positive (PSF)	Negative (PSF)
10' 0"	Short	48.41	71.59						34.2	38.8
10' 0"	Long	30.00	60.00	90.00					40.8	46.3
10' 0"	Oak Summit	30.63	60.00	89.38					40.8	46.3
12' 0"	Short	25.62	48.81	72.00	96.36	119.55			34.0	38.6
12' 0"	Long	27.25	49.63	72.00	94.38	116.75			34.0	38.6
12' 0"	Oak Summit	24.63	48.31	72.00	95.69	119.38			34.0	38.6
12' 2"	Short	26.27	49.64	73.00	96.36	119.73			33.5	38.1
12' 2"	Long	27.17	50.08	73.00	95.92	118.83			33.5	38.1
12' 2"	Oak Summit	25.13	49.06	73.00	96.94	120.88			33.5	38.1
12' 4"	Short	27.27	50.64	74.00	97.36	120.73			33.0	37.6
12' 4"	Long	28.17	51.08	74.00	96.92	119.83			33.0	37.6
12' 4"	Oak Summit	25.63	49.81	74.00	98.19	122.38			33.0	37.6
12' 6"	Short	26.34	50.67	75.00	99.33	123.66			32.6	37.1
12' 6"	Long	27.34	51.17	75.00	98.83	122.66			32.6	37.1
12' 6"	Oak Summit	26.13	50.56	75.00	99.44	123.88			32.6	37.1
12' 8"	Short	27.34	51.67	76.00	100.33	124.66			32.2	36.6
12' 8"	Long	28.20	52.10	76.00	99.90	123.80			32.2	36.6
12' 8"	Oak Summit	26.63	51.31	76.00	100.69	125.38			32.2	36.6
12' 10"	Short	27.50	52.25	77.00	101.75	126.50			31.8	36.1
12' 10"	Long	29.20	53.10	77.00	100.90	124.80			31.8	36.1
12' 10"	Oak Summit	27.13	52.06	77.00	101.94	126.88			31.8	36.1
13' 0"	Short	28.00	53.00	78.00	103.00	128.00			31.4	35.6
13' 0"	Long	30.20	54.10	78.00	101.90	125.80			31.4	35.6
13' 0"	Oak Summit	27.63	52.81	78.00	103.19	128.38			31.4	35.6
13' 2"	Short	29.00	54.00	79.00	104.00	129.00			31.0	35.2
13' 2"	Long	31.20	55.10	79.00	102.90	126.80			31.0	35.2
13' 2"	Oak Summit	28.13	53.56	79.00	104.44	129.88			31.0	35.2
13' 4"	Short	28.80	54.40	80.00	105.60	131.20			30.6	34.7
13' 4"	Long	29.80	54.90	80.00	105.10	130.20			30.6	34.7
13' 4"	Oak Summit	28.63	54.31	80.00	105.69	131.38			30.6	34.7
13' 6"	Short	29.80	55.40	81.00	106.60	132.20			30.2	34.3
13' 6"	Long	30.80	55.90	81.00	106.10	131.20			30.2	34.3
13' 6"	Oak Summit	29.13	55.06	81.00	106.94	132.88			30.2	34.3
13' 8"	Short	30.80	56.40	82.00	107.60	133.20			29.8	33.9
13' 8"	Long	31.25	56.63	82.00	107.38	132.75			29.8	33.9
13' 8"	Oak Summit	29.63	55.81	82.00	108.19	134.38			29.8	33.9
13' 10"	Short	31.33	57.16	83.00	108.71	134.55			29.5	33.5
13' 10"	Long	31.34	57.17	83.00	108.83	134.66			29.5	33.5
13' 10"	Oak Summit	30.13	56.56	83.00	109.44	135.88			29.5	33.5
14' 0"	Short	31.53	57.76	84.00	110.11	136.35			29.1	33.1
14' 0"	Long	33.25	58.63	84.00	109.38	134.75			29.1	33.1
14' 0"	Oak Summit	30.63	57.31	84.00	110.69	137.38			29.1	33.1
14' 2"	Short	32.69	58.85	85.00	111.41	137.57			28.8	32.7
14' 2"	Long	33.34	59.17	85.00	110.83	136.66			28.8	32.7
14' 2"	Oak Summit	31.13	58.06	85.00	111.94	138.88			28.8	32.7
14' 4"	Short	32.33	59.16	86.00	112.71	139.55			28.4	32.3
14' 4"	Long	34.34	60.17	86.00	111.83	137.66			28.4	32.3
14' 4"	Oak Summit	31.63	58.81	86.00	113.19	140.38			28.4	32.3
14' 6"	Short	32.73	59.86	87.00	114.01	141.15			28.1	31.9
14' 6"	Long	35.34	61.17	87.00	112.83	138.66			28.1	31.9
14' 6"	Oak Summit	32.13	59.56	87.00	114.44	141.88			28.1	31.9
14' 8"	Short	33.13	60.56	88.00	115.31	142.75			27.8	31.6
14' 8"	Long	33.21	60.41	88.00	109.59	131.19	152.78		27.8	31.6
14' 8"	Oak Summit	32.63	60.31	88.00	115.69	143.38			27.8	31.6
14' 10"	Short	33.53	61.26	89.00	116.61	144.35			27.5	31.2
14' 10"	Long	33.90	61.26	89.00	110.70	132.40	154.10		27.5	31.2
14' 10"	Oak Summit	33.13	61.06	89.00	116.94	144.88			27.5	31.2
15' 0"	Short	47.91	61.94	75.97	90.00	103.97	117.940	131.91	27.2	30.9
15' 0"	Long	24.90	46.60	68.30	90.00	111.70	133.40	155.10	27.2	30.9
15' 0"	Oak Summit	33.63	61.81	90.00	118.19	146.38			27.2	30.9
15' 2"	Short	48.50	62.66	76.83	91.00	105.11	119.210	133.31	26.9	30.5
15' 2"	Long	25.90	47.60	69.30	91.00	112.70	134.40	156.10	26.9	30.5
15' 2"	Oak Summit	34.13	62.56	91.00	119.44	147.88			26.9	30.5
15' 4"	Short	28.00	53.60	79.20	104.80	130.40	156.00		26.6	30.2
15' 4"	Long	24.87	47.25	69.63	92.00	114.38	136.75	159.13	26.6	30.2
15' 4"	Oak Summit	34.63	63.31	92.00	120.69	149.38			26.6	30.2
15' 6"	Short	23.44	46.62	69.81	93.00	116.19	139.38	162.56	26.3	29.9
15' 6"	Long	24.90	47.80	70.30	93.00	115.70	138.40	161.10	26.3	29.9
15' 6"	Oak Summit	24.63	47.42	70.21	93.00	115.79	138.58	161.37	26.3	29.9
15' 8"	Short	24.44	47.62	70.81	94.00	117.19	140.38	163.56	26.0	29.6
15' 8"	Long	25.90	48.80	71.30	94.00	116.70	139.40	162.10	26.0	29.6
15' 8"	Oak Summit	25.03	48.02	71.01	94.00	116.99	139.98	162.97	26.0	29.6
15' 10"	Short	25.44	48.62	71.81	95.00	118.19	141.38	164.56	25.7	29.3
15' 10"	Long	26.25	49.17	72.08	95.00	117.92	140.83	163.75	25.7	29.3
15' 10"	Oak Summit	25.43	48.62	71.81	95.00	118.19	141.38	164.57	25.7	29.3
16' 0"	Short	26.44	49.62	72.81	96.00	119.19	142.38	165.56	25.6	29.1
16' 0"	Long	27.90	50.60	73.30	96.00	118.70	141.40	164.10	25.6	29.1
16' 0"	Oak Summit	24.63	48.42	72.21	96.00	119.79	143.58	167.37	25.6	29.1

*ONLY SHADED STILES ARE HINGED

TABLE 1

DOOR HEIGHT	3" STRUT SPACING (BASED ON RECOMMENDED SECTION CONFIGURATION)															TOP
	A	B	C	D	E	F	G	H	I	J	K	L	M	N	O	T
6' 6"	5 1/2"	18 1/4"	25 1/2"	36 1/4"	43 1/2"	54 1/4"	61 1/2"									76 1/2"
7'	5 1/2"	18 1/4"	25 1/2"	39 1/4"	46 1/2"	60 1/4"	67 1/2"									82 1/2"
7' 6"	5 1/2"	15 1/4"	22 1/2"	33 1/4"	40 1/2"	51 1/4"	58 1/2"	69 1/4"	76 1/2"							88 1/2"
8'	5 1/2"	18 1/4"	25 1/2"	36 1/4"	43 1/2"	54 1/4"	61 1/2"	72 1/4"	79 1/2"							94 1/2"
8' 6"	5 1/2"	18 1/4"	25 1/2"	39 1/4"	46 1/2"	60 1/4"	67 1/2"	78 1/4"	85 1/2"							100 1/2"
9'	5 1/2"	15 1/4"	22 1/2"	33 1/4"	40 1/2"	51 1/4"	58 1/2"	69 1/4"	76 1/2"	87 1/4"	94 1/2"					106 1/2"
9' 6"	5 1/2"	18 1/4"	25 1/2"	36 1/4"	43 1/2"	54 1/4"	61 1/2"	72 1/4"	79 1/2"	90 1/4"	97 1/2"					112 1/2"
10'	5 1/2"	18 1/4"	25 1/2"	39 1/4"	46 1/2"	60 1/4"	67 1/2"	78 1/4"	85 1/2"	96 1/4"	103 1/2"					118 1/2"
10' 6"	5 1/2"	18 1/4"	25 1/2"	39 1/4"	46 1/2"	60 1/4"	67 1/2"	81 1/4"	88 1/2"	102 1/4"	109 1/2"					124 1/2"
11'	5 1/2"	18 1/4"	25 1/2"	36 1/4"	43 1/2"	54 1/4"	61 1/2"	72 1/4"	79 1/2"	90 1/4"	97 1/2"	108 1/4"	115 1/2"			130 1/2"
11' 6"	5 1/2"	18 1/4"	25 1/2"	39 1/4"	46 1/2"	60 1/4"	67 1/2"	78 1/4"	85 1/2"	96 1/4"	103 1/2"	114 1/4"	121 1/2"			136 1/2"
12'	5 1/2"	18 1/4"	25 1/2"	39 1/4"	46 1/2"	60 1/4"	67 1/2"	81 1/4"	88 1/2"	102 1/4"	109 1/2"	120 1/4"	127 1/2"			142 1/2"
12' 6"	5 1/2"	18 1/4"	25 1/2"	36 1/4"	43 1/2"	54 1/4"	61 1/2"	72 1/4"	79 1/2"	90 1/4"	97 1/2"	108 1/4"	115 1/2"	126 1/4"	133 1/2"	148 1/2"
13'	5 1/2"	18 1/4"	25 1/2"	39 1/4"	46 1/2"	60 1/4"	67 1/2"	78 1/4"	85 1/2"	96 1/4"	103 1/2"	114 1/4"	121 1/2"	132 1/4"	139 1/2"	154 1/2"
13' 6"	5 1/2"	18 1/4"	25 1/2"	39 1/4"	46 1/2"	60 1/4"	67 1/2"	81 1/4"	88 1/2"	102 1/4"	109 1/2"	120 1/4"	127 1/2"	138 1/4"	145 1/2"	160 1/2"
14'	5 1/2"	18 1/4"	25 1/2"	39 1/4"	46 1/2"	60 1/4"	67 1/2"	81 1/4"	88 1/2"	102 1/4"	109 1/2"	123 1/4"	130 1/2"	144 1/4"	151 1/2"	166 1/2"

TABLE 2

DOOR HEIGHT	SECTION HEIGHTS							
	Btm	#2	#3	#4	#5	#6	#7	#8
14' 0"	21"	21"	21"	21"	21"	21"	21"	21"
13' 6"	21"	21"	21"	21"	21"	18"	18"	21"
13' 0"	21"	21"	21"	18"	18"	18"	18"	21"
12' 6"	21"	18"	18"	18"	18"	18"	18"	21"
12' 0"	21"	21"	21"	21"	21"	18"	21"	
11' 6"	21"	21"	21"	18"	18"	18"	21"	
11' 0"	21"	18"	18"	18"	18"	18"	21"	
10' 6"	21"	21"	21"	21"	21"	21"		
10' 0"	21"	21"	21"	18"	18"	21"		
9' 6"	21"	18"	18"	18"	18"	21"		
9' 0"	18"	18"	18"	18"	18"	18"		
8' 6"	21"	21"	21"	18"	21"			
8' 0"	21"	18"	18"	18"	21"			
7' 6"	18"	18"	18"	18"	18"			
7' 0"	21"	21"	21"	21"				
6' 6"	21"	18"	18"	21"				