

THE METHOD OF TESTING WAS IN SUBSTANTIAL CONFORMANCE WITH THE PROCEDURE DESCRIBED IN ASTM E330 AND DASHA 108. THE PRESSURES SHOWN ON THE DRAWINGS WERE CALCULATED USING ASCE 7-98/02/05 WITH THE FOLLOWING PARAMETERS (5 FEET OF DOOR WIDTH IN THE END ZONE, ROOF AT ANY SLOPE, AND I=1.0):

| | | | | | |
|------------------|-----|-----|-----|-----|-----|
| WIND SPEED (MPH) | 110 | 100 | 95 | 91 | 87 |
| EXPOSURE LEVEL | B | C | C | D | D |
| MEAN ROOF HEIGHT | 30' | 15' | 25' | 15' | 25' |

- SPECIFICATIONS AND NOTES**
1. ALL THE LOAD FROM THE DOOR IS TRANSFERRED TO THE VERTICAL TRACK, FROM THE TRACK THE LOAD IS TRANSFERRED TO THE VERTICAL JAMBS. THE HORIZONTAL JAMB OR HEADER RECEIVES NO PORTION OF THE LOAD TRANSFERRED FROM THE DOOR.
 2. EACH VERTICAL JAMBS RECEIVES MAXIMUM DESIGN LOADS OF: +146.4 LBS/FT & -166.4 LBS/FT
 3. DOORS AND HARDWARE WILL BE DESIGNED, MANUFACTURED AND INSTALLED WITH STANDARDS AS SET FORTH BY DASHA.
 4. DOOR SECTIONS SHALL BE 25 GA. MIN. (.019") ROLLED FORMED LIGHT COMMERCIAL QUALITY.
 5. SUPPORTING STRUCTURAL ELEMENTS SHALL BE DESIGNED BY A REGISTERED PROFESSIONAL ENGINEER FOR WIND LOADS INDICATED ON THIS DRAWING IN ADDITION TO OTHER LOADINGS.
 6. REFER TO TABLES ON THE PAGE 3 FOR ADDITIONAL DOOR WIDTHS AND THEIR DESIGN PRESSURES

| REV | DESCRIPTION OF REVISIONS | DATE | BY |
|-----|---|----------|-----|
| A | UPDATED BOTTOM BRACKET INFORMATION ADDED OAKSUMMIT AND GLAZING OPTIONS | 07/05/05 | DLJ |
| B | REVISED NOTE 6 | 09/02/08 | DLJ |
| C | REMOVED TABLE 5, NOTE 7 | 05/25/09 | CBT |
| D | WIND SPEED TABLE & TRACK CONFIGURATIONS | 04/05/12 | RLR |
| E | ADDED NYLON ROLLERS/UPDATED GLAZING OPTIONS | 11/1/12 | RLR |

MAX SIZE
16' WIDTH
14' HEIGHT
(DOOR HEIGHT SUBJECT TO WEIGHT LIMITATIONS)
DESIGN LOADS
+18.3 PSF
-20.8 PSF
TEST LOADS
+27.5 PSF
-31.2 PSF

Thomas L. Shelmerdine, PE (TX PE #85829)
Structural Solutions, PA (TX Firm #F-004063)

TX

dba Structural Solutions of North Carolina, Inc.
5921-G W. Friendly Ave., Greensboro, NC 27410

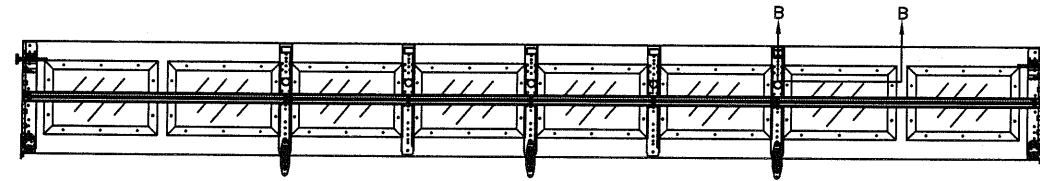
Amarr

165 CARRIAGE COURT WINSTON-SALEM, N.C. 27105

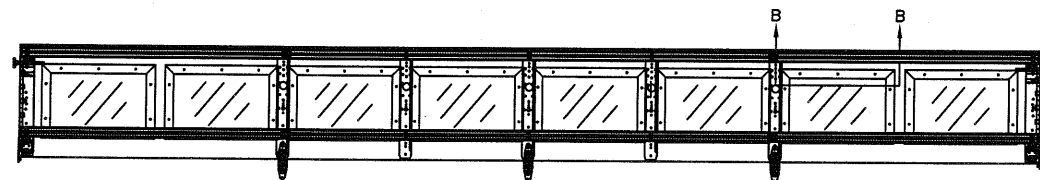
MODEL #650 OAK SUMMIT w/DuraSafe
MODEL #600 STRATFORD w/DuraSafe
MODEL #950 HERITAGE w/DuraSafe
Short, Long, Flush & Oak Summit Panel's

| | | | | | |
|------|------------|-----|------|----------|-----------------|
| SIZE | DRAWN BY | DLJ | DATE | 04/07/03 | DRAWING NUMBER |
| B | CHECKED BY | AAE | DATE | 04/07/03 | IRC-6016-110-15 |

SHEET 1 OF 3

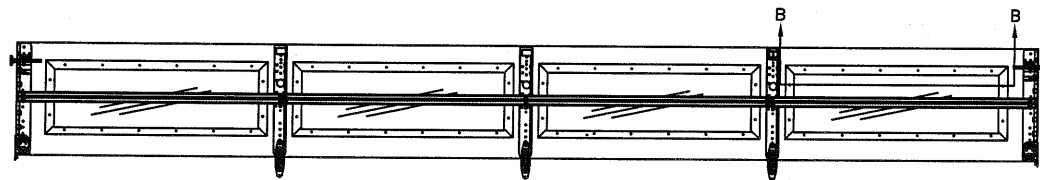


3' 20GA. STRUT LOCATED IN THE MIDDLE OF GLAZED SECTION ATTACHED W/(2) 1/4" X 3/4" HEX HEAD SCREWS AT END AND CENTER STILES



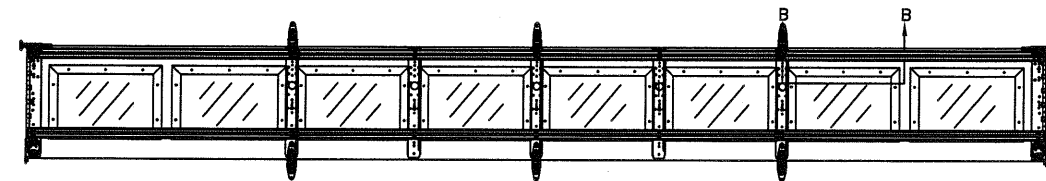
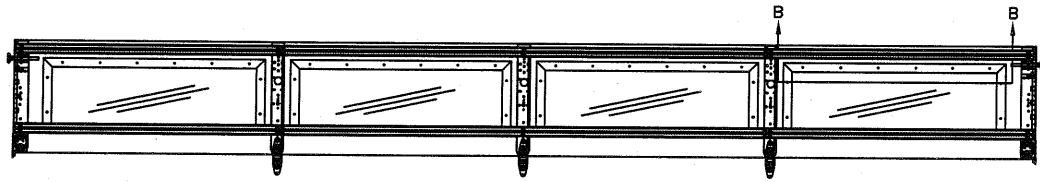
3' 20GA. STRUT LOCATED ON THE TOP AND BOTTOM OF GLAZED SECTION ATTACHED W/(2) 1/4" X 3/4" HEX HEAD SCREWS AT END AND CENTER STILES

OPTIONAL SHORT PANEL TOP GLAZED SECTION (STRUT AND STILE LAYOUTS)

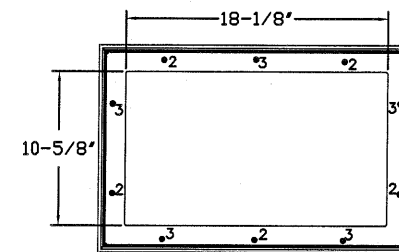


OPTIONAL LONG PANEL TOP GLAZED SECTION (STRUT AND STILE LAYOUTS)

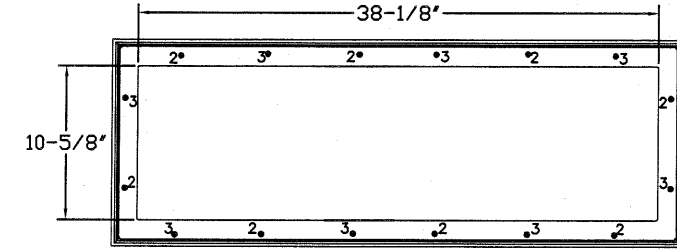
LONG PANEL GLAZING OPTION AVAILABLE ONLY ON DOORS 15'6" THROUGH 16'0" WIDE. DOORS LESS THAN 15'6" WIDE MUST USE SHORT PANEL GLAZING OR CLOSED SECTIONS



OPTIONAL SHORT PANEL INTERMEDIATE GLAZED SECTION (STRUT AND STILE LAYOUT)



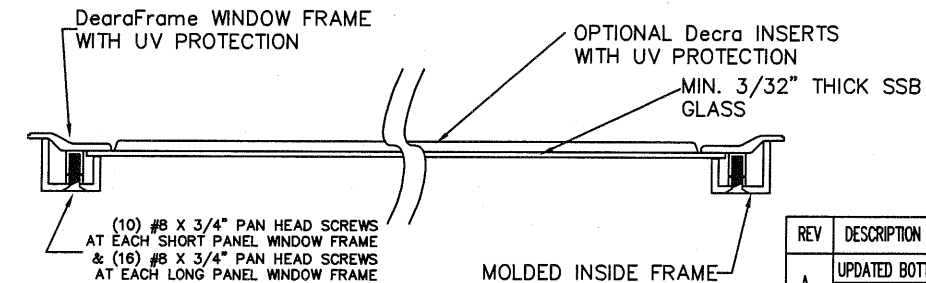
SHORT PANEL GLAZING FASTENER DETAIL
N.T.S.



LONG PANEL GLAZING FASTENER DETAIL
N.T.S.

GLAZING OPTION CROSS SECTION

GLAZING NOT AVAILABLE IN WIND-BORNE DEBRIS REGION
GLAZING MEETS ASTM E1300-04

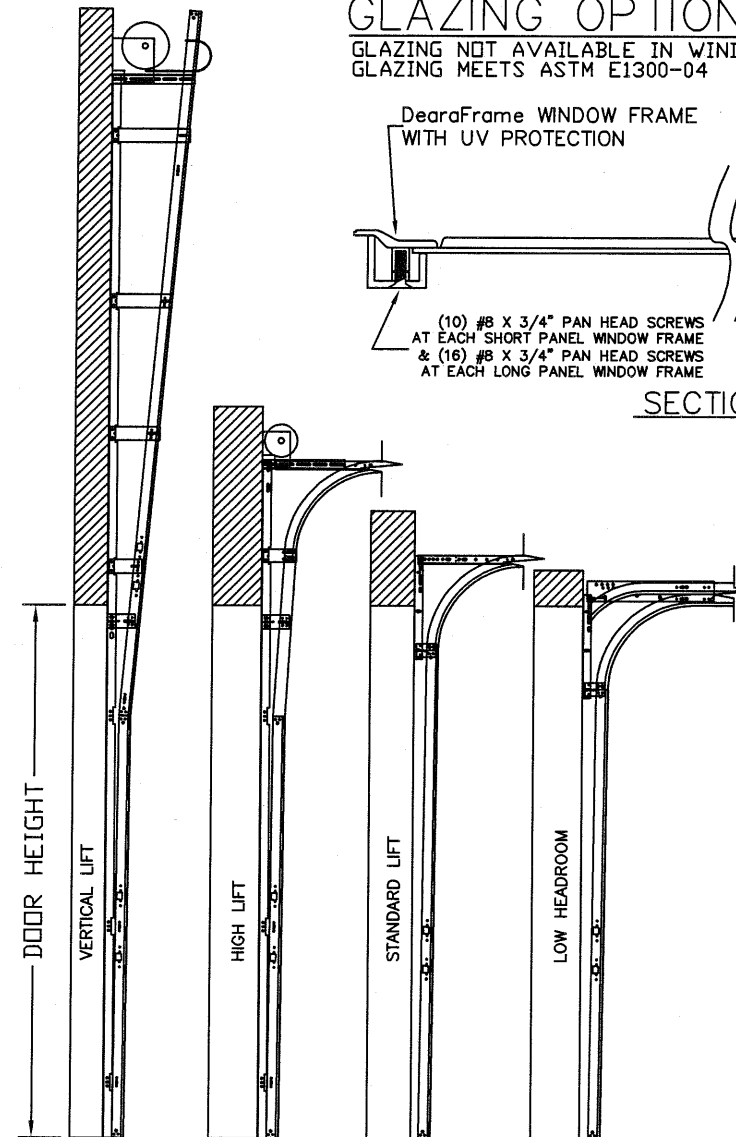
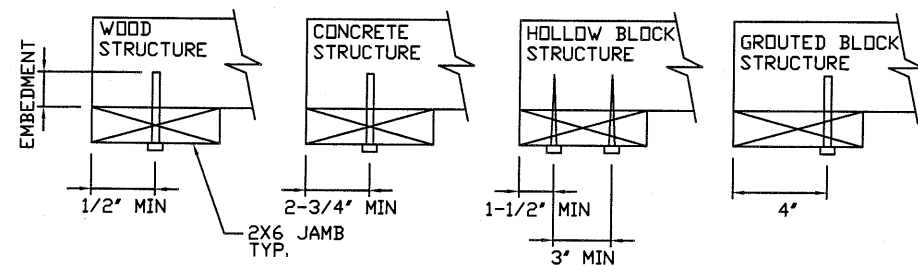


SECTION B-B

WOOD JAMB ATTACHMENT TO STRUCTURE

- 2 X 6 VERTICAL JAMB ATTACHMENT TO WOOD FRAME STRUCTURE
5/16" X 3" LAG SCREWS STARTING 6" FROM ENDS THEN 24" O.C. (1 1/2" EMBEDMENT)
- 2 X 6 VERTICAL JAMB ATTACHMENT TO 2,000 PSI CONCRETE
HILTI KWIK BOLT 3/8" X 4" STARTING 6" FROM ENDS THEN 24" O.C. (2 1/2" EMBEDMENT)
HILTI SLEEVE ANCHOR 3/8" X 2-3/4" STARTING 6" FROM ENDS THEN 24" O.C. (1 1/4" EMBEDMENT)
ITW/RAMSET REDHEAD (TRU-BOLT) 3/8" X 4" STARTING 6" FROM ENDS THEN 24" O.C. (2 1/2" EMBEDMENT)
- 2 X 6 VERTICAL JAMB ATTACHMENT TO HOLLOW C-90 BLOCK
SIMPSON 1/4" X 3" TITEN SCREWS STARTING 6" FROM ENDS, USE PAIRS OF FASTENERS (3" APART) AT 24" O.C. (1 1/2" EMBEDMENT)
HILTI 1/4" X 2-3/4" KWIK-CON II+ SCREWS STARTING 6" FROM ENDS, USE PAIRS OF FASTENERS (3" APART) AT 24" O.C. (1 1/4" EMBEDMENT)
- 2 X 6 VERTICAL JAMB ATTACHMENT TO GROUTED C-90 BLOCK (2000 PSI GROUT)
HILTI SLEEVE ANCHOR 3/8" X 2-3/4" STARTING 6" FROM ENDS THEN 24" O.C. (1 1/4" EMBEDMENT) (OR, USE FASTENERS FOR HOLLOW C-90 BLOCK)

*LAGS AND BOLTS CAN BE COUNTERSUNK TO PROVIDE A FLUSH MOUNTING SURFACE.
*PREPARATION OF WOOD JAMBS BY OTHERS



AVAILABLE TRACK CONFIGURATIONS
N.T.S.

| REV | DESCRIPTION OF REVISIONS | DATE | BY |
|-----|---|----------|-----|
| A | UPDATED BOTTOM BRACKET INFORMATION ADDED OAKSUMMIT AND GLAZING OPTIONS | 07/05/05 | DLJ |
| B | REVISED NOTE 6 | 09/02/08 | DLJ |
| C | REMOVED TABLE 5, NOTE 7 | 05/25/09 | CBT |
| D | WIND SPEED TABLE & TRACK CONFIGURATIONS | 04/05/12 | RLR |
| E | ADDED NYLON ROLLERS/UPDATED GLAZING OPTIONS | 11/1/12 | RLR |

MAX SIZE
16' WIDTH
14' HEIGHT
(DOOR HEIGHT SUBJECT TO WEIGHT LIMITATIONS)
DESIGN LOADS
+18.3 PSF
-20.8 PSF
TEST LOADS
+27.5 PSF
-31.2 PSF

Thomas L. Shelmerdine, PE (TX PE #85829)
Structural Solutions, PA (TX Firm #004063)

TX

dba Structural Solutions of North Carolina, Inc.
5921-G W. Friendly Ave., Greensboro, NC 27410

Amarr

165 CARRIAGE COURT WINSTON-SALEM, N.C. 27105

MODEL #650 OAK SUMMIT w/DuraSafe
MODEL #600 STRATFORD w/DuraSafe
MODEL #950 HERITAGE w/DuraSafe
Short, Long, Flush & Oak Summit Panel's

| SIZE | DRAWN BY | DATE | DRAWING NUMBER |
|------|------------|----------|-----------------|
| B | DLJ | 04/07/03 | IRC-6016-110-15 |
| | CHECKED BY | DATE | |
| | AAE | 04/07/03 | |

TABLE 1

| DOOR HEIGHT | STRUT SPACING (BASED ON RECOMMENDED SECTION CONFIGURATION) | | | | | | | | | | | TOP |
|-------------|--|---------|---------|---------|---------|---------|---------|----------|----------|----------|----------|----------|
| | A | B | C | D | E | F | G | H | I | J | K | |
| 6' 6" | 5 1/2" | 18 1/4" | 36 1/4" | 43 1/2" | 54 1/4" | | | | | | | 67 1/2" |
| 7' | 5 1/2" | 18 1/4" | 39 1/4" | 46 1/2" | 60 1/4" | | | | | | | 73 1/2" |
| 7' 6" | 5 1/2" | 15 1/4" | 33 1/4" | 40 1/2" | 51 1/4" | 69 1/4" | 76 1/2" | | | | | 88 1/2" |
| 8' | 5 1/2" | 18 1/4" | 36 1/4" | 43 1/2" | 54 1/4" | 72 1/4" | 79 1/2" | | | | | 94 1/2" |
| 8' 6" | 5 1/2" | 18 1/4" | 39 1/4" | 46 1/2" | 60 1/4" | 78 1/4" | 85 1/2" | | | | | 100 1/2" |
| 9' | 5 1/2" | 15 1/4" | 33 1/4" | 40 1/2" | 51 1/4" | 69 1/4" | 76 1/2" | 87 1/4" | | | | 99" |
| 9' 6" | 5 1/2" | 18 1/4" | 36 1/4" | 43 1/2" | 54 1/4" | 72 1/4" | 79 1/2" | 90 1/4" | | | | 103 1/2" |
| 10' | 5 1/2" | 18 1/4" | 39 1/4" | 46 1/2" | 60 1/4" | 78 1/4" | 85 1/2" | 96 1/4" | | | | 109 1/2" |
| 10' 6" | 5 1/2" | 18 1/4" | 39 1/4" | 46 1/2" | 60 1/4" | 81 1/4" | 88 1/2" | 102 1/4" | | | | 115 1/2" |
| 11' | 5 1/2" | 18 1/4" | 36 1/4" | 43 1/2" | 54 1/4" | 72 1/4" | 79 1/2" | 90 1/4" | 108 1/4" | 115 1/2" | | 130 1/2" |
| 11' 6" | 5 1/2" | 18 1/4" | 39 1/4" | 46 1/2" | 60 1/4" | 78 1/4" | 85 1/2" | 96 1/4" | 114 1/4" | 121 1/2" | | 136 1/2" |
| 12' | 5 1/2" | 18 1/4" | 39 1/4" | 46 1/2" | 60 1/4" | 81 1/4" | 88 1/2" | 102 1/4" | 120 1/4" | 127 1/2" | | 142 1/2" |
| 12' 6" | 5 1/2" | 18 1/4" | 36 1/4" | 43 1/2" | 54 1/4" | 72 1/4" | 79 1/2" | 90 1/4" | 108 1/4" | 115 1/2" | 126 1/4" | 139 1/2" |
| 13' | 5 1/2" | 18 1/4" | 39 1/4" | 46 1/2" | 60 1/4" | 78 1/4" | 85 1/2" | 96 1/4" | 114 1/4" | 121 1/2" | 132 1/4" | 145 1/2" |
| 13' 6" | 5 1/2" | 18 1/4" | 39 1/4" | 46 1/2" | 60 1/4" | 81 1/4" | 88 1/2" | 102 1/4" | 120 1/4" | 127 1/2" | 138 1/4" | 151 1/2" |
| 14' | 5 1/2" | 18 1/4" | 39 1/4" | 46 1/2" | 60 1/4" | 81 1/4" | 88 1/2" | 102 1/4" | 123 1/4" | 130 1/2" | 144 1/4" | 157 1/2" |

TABLE 2

| DOOR HEIGHT | SECTION HEIGHTS | | | | | | | |
|-------------|-----------------|-----|-----|-----|-----|-----|-----|-----|
| | Btm | #2 | #3 | #4 | #5 | #6 | #7 | #8 |
| 14' 0" | 21" | 21" | 21" | 21" | 21" | 21" | 21" | 21" |
| 13' 6" | 21" | 21" | 21" | 21" | 18" | 18" | 18" | 21" |
| 13' 0" | 21" | 21" | 21" | 18" | 18" | 18" | 18" | 21" |
| 12' 6" | 21" | 18" | 18" | 18" | 18" | 18" | 18" | 21" |
| 12' 0" | 21" | 21" | 21" | 21" | 21" | 18" | 21" | |
| 11' 6" | 21" | 21" | 21" | 18" | 18" | 18" | 21" | |
| 11' 0" | 21" | 18" | 18" | 18" | 18" | 18" | 21" | |
| 10' 6" | 21" | 21" | 21" | 21" | 21" | 21" | | |
| 10' 0" | 21" | 21" | 21" | 18" | 18" | 21" | | |
| 9' 6" | 21" | 18" | 18" | 18" | 18" | 21" | | |
| 9' 0" | 18" | 18" | 18" | 18" | 18" | 18" | | |
| 8' 6" | 21" | 21" | 21" | 18" | 21" | | | |
| 8' 0" | 21" | 18" | 18" | 18" | 21" | | | |
| 7' 6" | 18" | 18" | 18" | 18" | 18" | | | |
| 7' 0" | 21" | 21" | 21" | 21" | | | | |
| 6' 6" | 21" | 18" | 18" | 21" | | | | |

TABLE 3

| DOOR HEIGHT | TRACK ATTACHMENT | | | | | | | SPLICE |
|-------------|------------------|-----|-----|-----|------|------|------|--------|
| | A | B | C | D | E | F | G | |
| 6' 6" | 10" | 38" | 58" | | | | | 70" |
| 7' | 10" | 38" | 58" | | | | | 76" |
| 7' 6" | 4" | 28" | 52" | 76" | | | | 82" |
| 8' | 10" | 34" | 58" | 82" | | | | 88" |
| 8' 6" | 4" | 28" | 52" | 76" | | | | 94" |
| 9' | 10" | 34" | 58" | 82" | | | | 100" |
| 9' 6" | 4" | 28" | 52" | 76" | 100" | | | 106" |
| 10' | 10" | 34" | 58" | 82" | 106" | | | 112" |
| 10' 6" | 4" | 28" | 52" | 76" | 100" | | | 118" |
| 11' | 10" | 34" | 58" | 82" | 106" | | | 124" |
| 11' 6" | 4" | 28" | 52" | 76" | 100" | 124" | | 130" |
| 12' | 10" | 34" | 58" | 82" | 106" | 130" | | 136" |
| 12' 6" | 4" | 28" | 52" | 76" | 100" | 124" | | 142" |
| 13' | 10" | 34" | 58" | 82" | 106" | 130" | | 148" |
| 13' 6" | 4" | 28" | 52" | 76" | 100" | 124" | 148" | 154" |
| 14' | 10" | 34" | 58" | 82" | 106" | 130" | 154" | 160" |

ALL TRACK ATTACHMENT SPACING +/-2" ALLOWED WITH SYP OR SPF NO. 2 OR BETTER ONLY

TABLE 4

| Section Width (ft) | Panel Type | Center Stile Locations (Measured from Left Edge) | | | | |
|--------------------|------------|--|----------|----------|----------|----------|
| | | 1st (in) | 2st (in) | 3rd (in) | 4th (in) | 5th (in) |
| 10' 0" | Short | 48.41 | 71.59 | | | |
| 10' 0" | Long | 30.00 | 60.00 | 90.00 | | |
| 10' 0" | Oak Summit | 30.63 | 60.00 | 89.38 | | |
| 12' 0" | Short | 48.81 | 72.00 | 95.19 | | |
| 12' 0" | Long | 49.63 | 72.00 | 94.38 | | |
| 12' 0" | Oak Summit | 48.31 | 72.00 | 95.69 | | |
| 12' 2" | Short | 49.64 | 73.00 | 96.36 | | |
| 12' 2" | Long | 50.08 | 73.00 | 95.92 | | |
| 12' 2" | Oak Summit | 49.06 | 73.00 | 96.94 | | |
| 12' 4" | Short | 50.64 | 74.00 | 97.36 | | |
| 12' 4" | Long | 51.08 | 74.00 | 96.92 | | |
| 12' 4" | Oak Summit | 49.81 | 74.00 | 98.19 | | |
| 12' 6" | Short | 50.67 | 75.00 | 99.33 | | |
| 12' 6" | Long | 51.17 | 75.00 | 98.83 | | |
| 12' 6" | Oak Summit | 50.56 | 75.00 | 99.44 | | |
| 12' 8" | Short | 51.67 | 76.00 | 100.33 | | |
| 12' 8" | Long | 52.10 | 76.00 | 99.90 | | |
| 12' 8" | Oak Summit | 51.31 | 76.00 | 100.69 | | |
| 12' 10" | Short | 52.25 | 77.00 | 101.75 | | |
| 12' 10" | Long | 53.10 | 77.00 | 100.90 | | |
| 12' 10" | Oak Summit | 52.06 | 77.00 | 101.94 | | |
| 13' 0" | Short | 53.00 | 78.00 | 103.00 | | |
| 13' 0" | Long | 54.10 | 78.00 | 101.90 | | |
| 13' 0" | Oak Summit | 52.81 | 78.00 | 103.19 | | |
| 13' 2" | Short | 54.00 | 79.00 | 104.00 | | |
| 13' 2" | Long | 55.10 | 79.00 | 102.90 | | |
| 13' 2" | Oak Summit | 53.56 | 79.00 | 104.44 | | |
| 13' 4" | Short | 54.40 | 80.00 | 105.60 | | |
| 13' 4" | Long | 54.90 | 80.00 | 105.10 | | |
| 13' 4" | Oak Summit | 54.31 | 80.00 | 105.69 | | |
| 13' 6" | Short | 55.40 | 81.00 | 106.60 | | |
| 13' 6" | Long | 55.90 | 81.00 | 106.10 | | |
| 13' 6" | Oak Summit | 55.06 | 81.00 | 106.94 | | |
| 13' 8" | Short | 56.40 | 82.00 | 107.60 | | |
| 13' 8" | Long | 56.63 | 82.00 | 107.38 | | |
| 13' 8" | Oak Summit | 55.81 | 82.00 | 108.19 | | |
| 13' 10" | Short | 57.16 | 83.00 | 108.71 | | |
| 13' 10" | Long | 57.17 | 83.00 | 108.83 | | |
| 13' 10" | Oak Summit | 56.56 | 83.00 | 109.44 | | |
| 14' 0" | Short | 57.76 | 84.00 | 110.11 | | |
| 14' 0" | Long | 58.63 | 84.00 | 109.38 | | |
| 14' 0" | Oak Summit | 57.31 | 84.00 | 110.69 | | |
| 14' 2" | Short | 58.85 | 85.00 | 111.41 | | |
| 14' 2" | Long | 59.17 | 85.00 | 110.83 | | |
| 14' 2" | Oak Summit | 58.06 | 85.00 | 111.94 | | |
| 14' 4" | Short | 59.16 | 86.00 | 112.71 | | |
| 14' 4" | Long | 60.17 | 86.00 | 111.83 | | |
| 14' 4" | Oak Summit | 58.81 | 86.00 | 113.19 | | |
| 14' 6" | Short | 59.86 | 87.00 | 114.01 | | |
| 14' 6" | Long | 61.17 | 87.00 | 112.83 | | |
| 14' 6" | Oak Summit | 59.56 | 87.00 | 114.44 | | |
| 14' 8" | Short | 60.56 | 88.00 | 115.31 | | |
| 14' 8" | Long | 61.87 | 88.00 | 114.59 | 131.19 | |
| 14' 8" | Oak Summit | 60.31 | 88.00 | 115.69 | | |
| 14' 10" | Short | 61.26 | 89.00 | 116.61 | | |
| 14' 10" | Long | 62.60 | 89.00 | 116.70 | 132.40 | |
| 14' 10" | Oak Summit | 61.06 | 89.00 | 116.94 | | |
| 15' 0" | Short | 61.94 | 90.00 | 117.97 | 117.94 | |
| 15' 0" | Long | 63.30 | 90.00 | 117.70 | 133.40 | |
| 15' 0" | Oak Summit | 62.66 | 90.00 | 118.19 | 146.38 | |
| 15' 2" | Short | 62.66 | 91.00 | 118.83 | 119.21 | |
| 15' 2" | Long | 64.00 | 91.00 | 118.70 | 134.40 | |
| 15' 2" | Oak Summit | 63.13 | 91.00 | 119.44 | 147.88 | |
| 15' 4" | Short | 63.60 | 92.00 | 120.40 | 130.40 | |
| 15' 4" | Long | 64.95 | 92.00 | 119.38 | 136.75 | |
| 15' 4" | Oak Summit | 63.63 | 92.00 | 120.69 | 149.38 | |
| 15' 6" | Short | 64.62 | 93.00 | 121.19 | 139.38 | |
| 15' 6" | Long | 66.00 | 93.00 | 120.70 | 138.40 | |
| 15' 6" | Oak Summit | 64.42 | 93.00 | 121.79 | 138.58 | |
| 15' 8" | Short | 65.62 | 94.00 | 122.19 | 140.38 | |
| 15' 8" | Long | 67.00 | 94.00 | 121.70 | 139.40 | |
| 15' 8" | Oak Summit | 65.02 | 94.00 | 122.99 | 139.98 | |
| 15' 10" | Short | 66.82 | 95.00 | 123.19 | 141.38 | |
| 15' 10" | Long | 68.17 | 95.00 | 122.92 | 140.83 | |
| 15' 10" | Oak Summit | 66.62 | 95.00 | 123.19 | 141.38 | |
| 16' 0" | Short | 68.62 | 96.00 | 123.19 | 142.38 | |
| 16' 0" | Long | 70.00 | 96.00 | 122.70 | 141.40 | |
| 16' 0" | Oak Summit | 68.42 | 96.00 | 123.79 | 143.58 | |

^ Stiles do not need to be hinged

TABLE 5

| Section Width (ft) | Panel Type | Max Design Loads Allowed | |
|--------------------|------------|--------------------------|----------------|
| | | Positive (PSF) | Negative (PSF) |
| 10' 0" | Short | 24.4 | 27.8 |
| 10' 0" | Long | 29.1 | 33.1 |
| 10' 0" | Oak Summit | 29.1 | 33.1 |
| 12' 0" | Short | 24.3 | 27.6 |
| 12' 0" | Long | 24.3 | 27.6 |
| 12' 0" | Oak Summit | 24.3 | 27.6 |
| 12' 2" | Short | 23.9 | 27.2 |
| 12' 2" | Long | 23.9 | 27.2 |
| 12' 2" | Oak Summit | 23.9 | 27.2 |
| 12' 4" | Short | 23.6 | 26.8 |
| 12' 4" | Long | 23.6 | 26.8 |
| 12' 4" | Oak Summit | 23.6 | 26.8 |
| 12' 6" | Short | 23.3 | 26.5 |
| 12' 6" | Long | 23.3 | 26.5 |
| 12' 6" | Oak Summit | 23.3 | 26.5 |
| 12' 8" | Short | 23.0 | 26.1 |
| 12' 8" | Long | 23.0 | 26.1 |
| 12' 8" | Oak Summit | 23.0 | 26.1 |
| 12' 10" | Short | 22.7 | 25.8 |
| 12' 10" | Long | 22.7 | 25.8 |
| 12' 10" | Oak Summit | 22.7 | 25.8 |
| 13' 0" | Short | 22.4 | 25.5 |
| 13' 0" | Long | 22.4 | 25.5 |
| 13' 0" | Oak Summit | 22.4 | 25.5 |
| 13' 2" | Short | 22.1 | 25.1 |
| 13' 2" | Long | 22.1 | 25.1 |
| 13' 2" | Oak Summit | 22.1 | 25.1 |
| 13' 4" | Short | 21.9 | 24.8 |
| 13' 4" | Long | 21.9 | 24.8 |
| 13' 4" | Oak Summit | 21.9 | 24.8 |
| 13' 6" | Short | 21.6 | 24.5 |
| 13' 6" | Long | 21.6 | 24.5 |
| 13' 6" | Oak Summit | 21.6 | 24.5 |
| 13' 8" | Short | 21.3 | 24.2 |
| 13' 8" | Long | 21.3 | 24.2 |
| 13' 8" | Oak Summit | 21.3 | 24.2 |
| 13' 10" | Short | 21.1 | 23.9 |
| 13' 10" | Long | 21.1 | 23.9 |
| 13' 10" | Oak Summit | 21.1 | 23.9 |
| 14' 0" | Short | 20.8 | 23.7 |
| 14' 0" | Long | 20.8 | 23.7 |
| 14' 0" | Oak Summit | 20.8 | 23.7 |
| 14' 2" | Short | 20.6 | 23.4 |
| 14' 2" | Long | 20.6 | 23.4 |
| 14' 2" | Oak Summit | 20.6 | 23.4 |
| 14' 4" | Short | 20.3 | 23.1 |
| 14' 4" | Long | 20.3 | 23.1 |
| 14' 4" | Oak Summit | 20.3 | 23.1 |
| 14' 6" | Short | 20.1 | 22.8 |
| 14' 6" | Long | 20.1 | 22.8 |
| 14' 6" | Oak Summit | 20.1 | 22.8 |
| 14' 8" | Short | 19.9 | 22.6 |
| 14' 8" | Long | 19.9 | 22.6 |
| 14' 8" | Oak Summit | 19.9 | 22.6 |
| 14' 10" | Short | 19.6 | 22.3 |
| 14' 10" | Long | 19.6 | 22.3 |
| 14' 10" | Oak Summit | 19.6 | 22.3 |
| 15' 0" | Short | 19.4 | 22.1 |
| 15' 0" | Long | 19.4 | 22.1 |