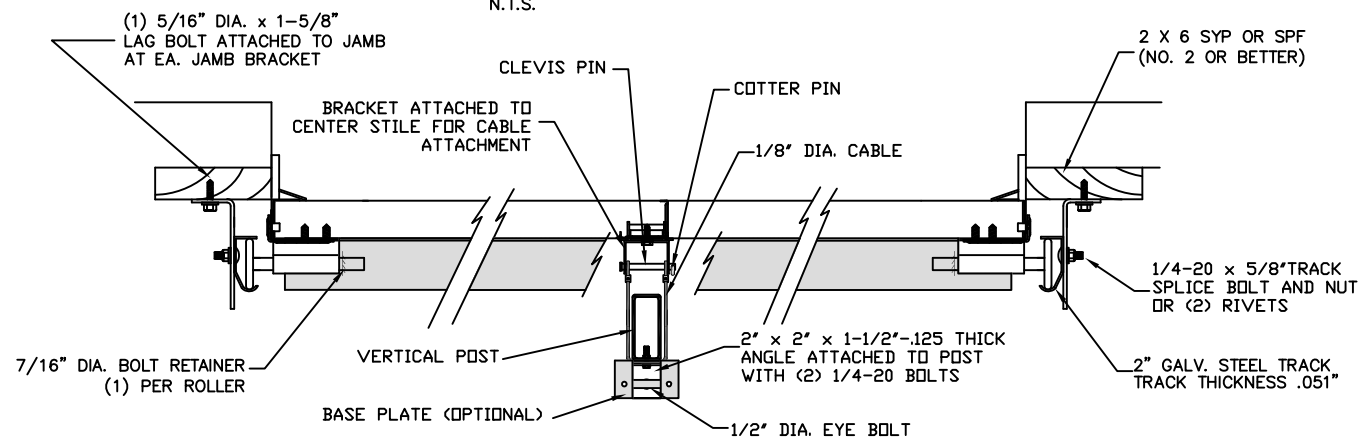
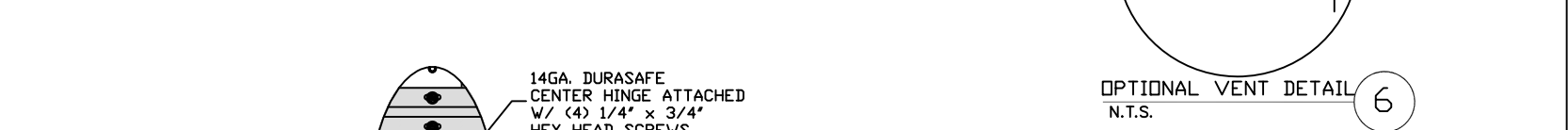
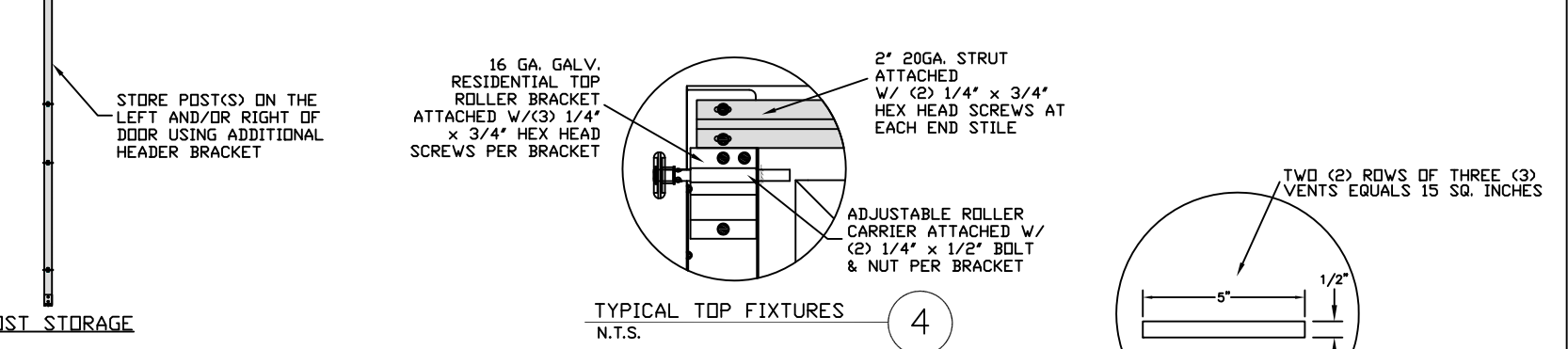
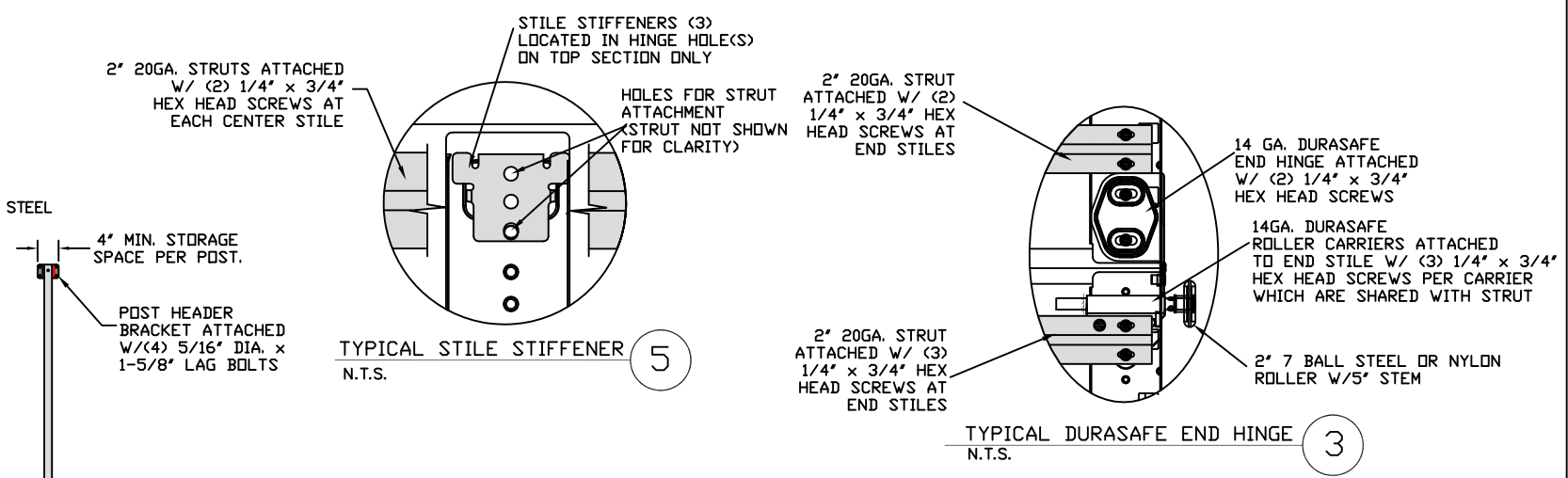
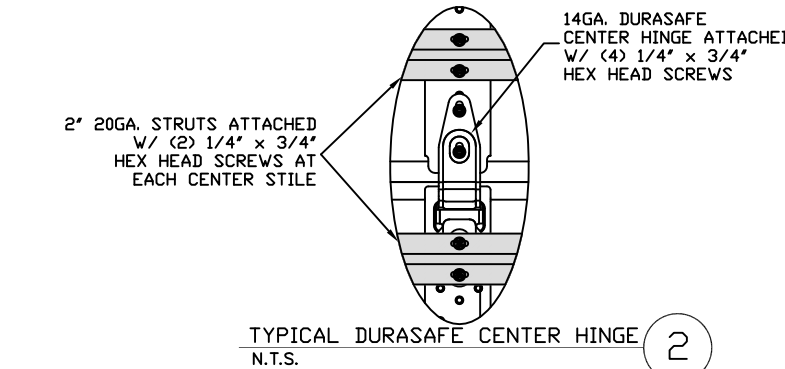


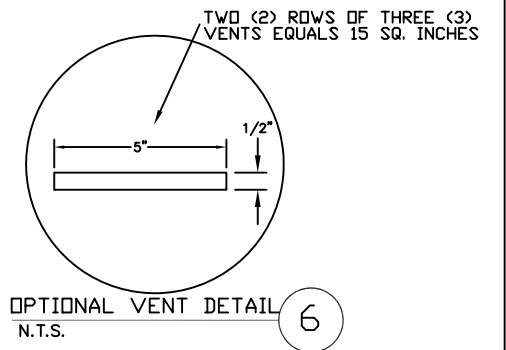
INSIDE ELEVATION
N.T.S.



TYPICAL BOTTOM BRACKET
N.T.S.



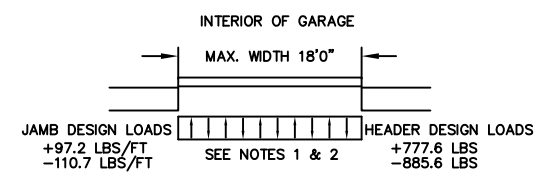
TYPICAL DURASAFE CENTER HINGE
N.T.S.



OPTIONAL VENT DETAIL
N.T.S.

THE METHOD OF TESTING WAS IN SUBSTANTIAL CONFORMANCE WITH THE PROCEDURE DESCRIBED IN ASTM E330 AND DASMA 108. THE PRESSURES SHOWN ON THE DRAWINGS WERE CALCULATED USING ASCE 7-98/02/05 WITH THE FOLLOWING PARAMETERS (5 FEET OF DOOR WIDTH IN THE END ZONE, ROOF AT ANY SLOPE, AND I=1.0):

WIND SPEED (MPH)	120	109	104	99	95
EXPOSURE LEVEL	B	C	C	D	D
MEAN ROOF HEIGHT	30'	15'	25'	15'	25'



SPECIFICATIONS AND NOTES

1. THE HEADER RECEIVES MAXIMUM DESIGN LOADS OF: +777.6 LBS & -885.6 LBS AT THE TOP OF THE POST.
2. EACH VERTICAL JAMB RECEIVES MAXIMUM DESIGN LOADS OF: +97.2 LBS/FT & -110.7 LBS/FT
3. DOORS AND HARDWARE WILL BE DESIGNED, MANUFACTURED AND INSTALLED WITH STANDARDS AS SET FORTH BY DASMA.
4. DOOR SECTIONS SHALL BE 24 GA. MIN. (.022") ROLLED FORMED LIGHT COMMERCIAL QUALITY
5. SUPPORTING STRUCTURAL ELEMENTS SHALL BE DESIGNED BY A REGISTERED PROFESSIONAL ENGINEER FOR WIND LOADS INDICATED ON THIS DRAWING IN ADDITION TO OTHER LOADINGS.

REV	DESCRIPTION OF REVISIONS	DATE	BY
A	REVISED NOTE 6	09/02/08	DLJ
B	REMOVED TABLES 2-3, NOTE 7.	05/19/09	CBT
C	UPDATED WJATS AND ADDED DOOR VENTS	1/17/12	RLR

MAX SIZE
18' WIDTH
8' HEIGHT
(DOOR HEIGHT SUBJECT TO WEIGHT LIMITATIONS)

DESIGN LOADS
+21.6 PSF
-24.6 PSF

TEST LOADS
(1.5 x DESIGN LOADS)
+32.4 PSF
-36.9 PSF

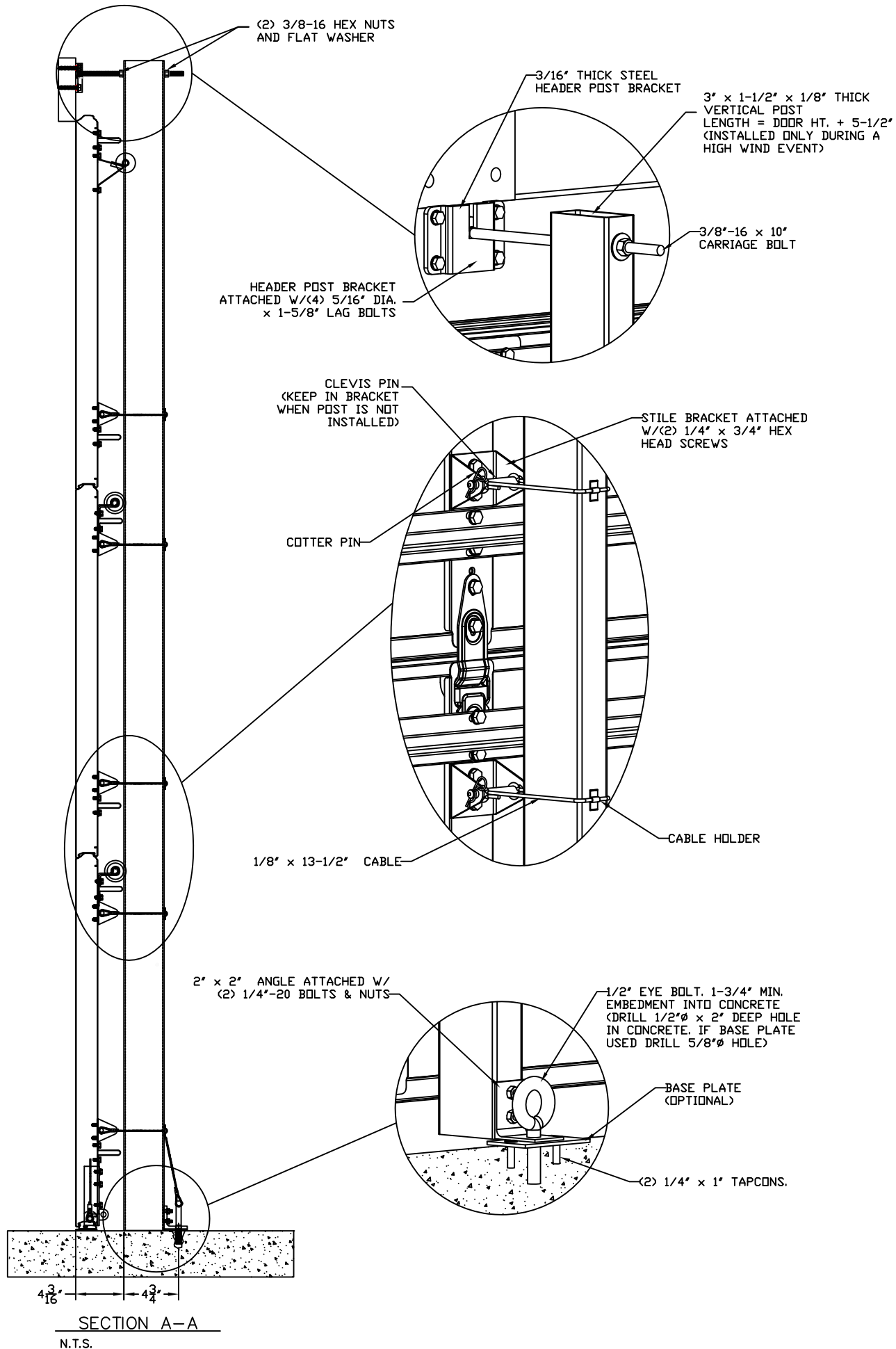
Amarr
165 CARRIAGE COURT WINSTON-SALEM, N.C. 27105

MODEL #500 CLASSICA

SIZE	DRAWN BY DLJ	DATE 05/16/05	DRAWING NUMBER
B	CHECKED BY AAE	DATE 05/16/05	IRC-5318-120-45

ENGINEER: THOMAS L. SHELMERDINE P.E. LIC. No. 0048579 SHEET 1 OF 3

WOOD JAMB ATTACHMENT TO STRUCTURE



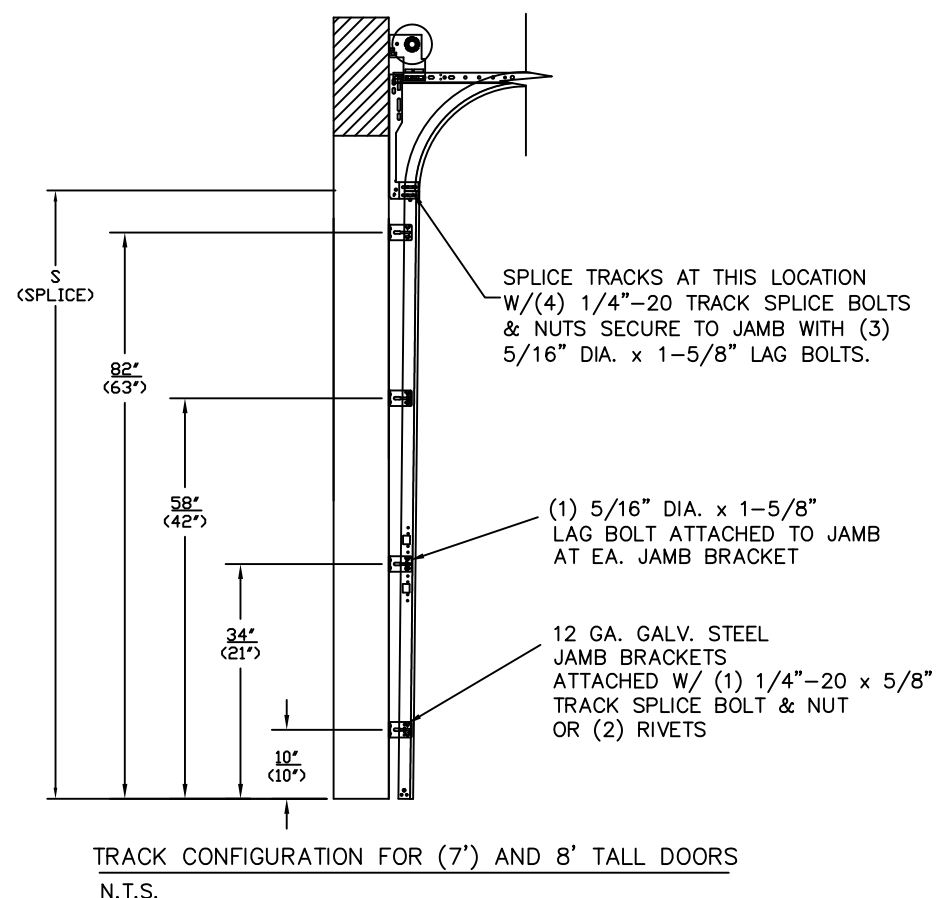
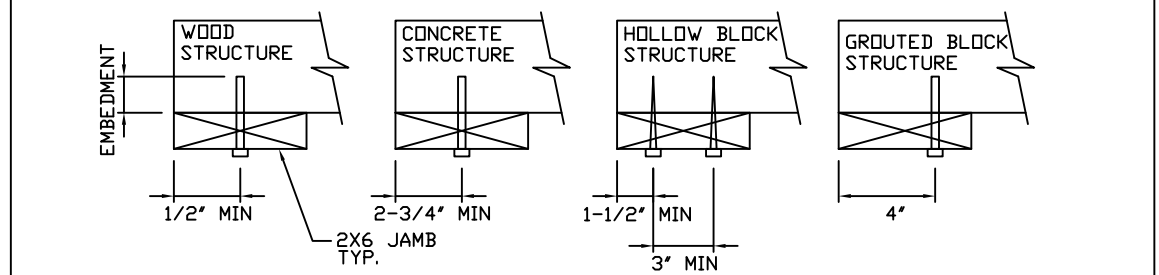
2 X 6 VERTICAL JAMB ATTACHMENT TO WOOD FRAME STRUCTURE
 5/16" X 3" LAG SCREWS STARTING 6" FROM ENDS THEN 24" O.C. (1 1/2" EMBEDMENT)

2 X 6 VERTICAL JAMB ATTACHMENT TO 2,000 PSI CONCRETE
 HILTI KWIK BOLT 3/8" X 4" STARTING 6" FROM ENDS THEN 24" O.C. (2 1/2" EMBEDMENT)
 HILTI SLEEVE ANCHOR 3/8" X 2-3/4" STARTING 6" FROM ENDS THEN 24" O.C. (1 1/4" EMBEDMENT)
 ITW/RAMSET REDHEAD (TRU-BOLT) 3/8" X 4" STARTING 6" FROM ENDS THEN 24" O.C. (2 1/2" EMBEDMENT)

2 X 6 VERTICAL JAMB ATTACHMENT TO HOLLOW C-90 BLOCK
 SIMPSON 1/4" X 3" TITEN SCREWS STARTING 6" FROM ENDS, USE PAIRS OF FASTENERS (3" APART) AT 24" O.C. (1 1/2" EMBEDMENT)
 HILTI 1/4" X 2-3/4" KWIK-CON II+ SCREWS STARTING 6" FROM ENDS, USE PAIRS OF FASTENERS (3" APART) AT 24" O.C. (1 1/4" EMBEDMENT)

2 X 6 VERTICAL JAMB ATTACHMENT TO GROUTED C-90 BLOCK (2000 PSI GROUT)
 HILTI SLEEVE ANCHOR 3/8" X 2-3/4" STARTING 6" FROM ENDS THEN 24" O.C. (1 1/4" EMBEDMENT) (OR, USE FASTENERS FOR HOLLOW C-90 BLOCK)

*LAGS AND BOLTS CAN BE COUNTERSUNK TO PROVIDE A FLUSH MOUNTING SURFACE.
 *PREPARATION OF WOOD JAMBS BY OTHERS



REV	DESCRIPTION OF REVISIONS	DATE	BY
A	REVISED NOTE 6	09/02/08	DLJ
B	REMOVED TABLES 2-3, NOTE 7.	05/19/09	CBT
C	UPDATED WJATS AND ADDED DOOR VENTS	1/17/12	RLR

MAX SIZE
 18' WIDTH
 8' HEIGHT
 (DOOR HEIGHT SUBJECT TO WEIGHT LIMITATIONS)

DESIGN LOADS
 +21.6 PSF
 -24.6 PSF

TEST LOADS
 (1.5 x DESIGN LOADS)
 +32.4 PSF
 -36.9 PSF

Amarr
 165 CARRIAGE COURT WINSTON-SALEM, N.C. 27105

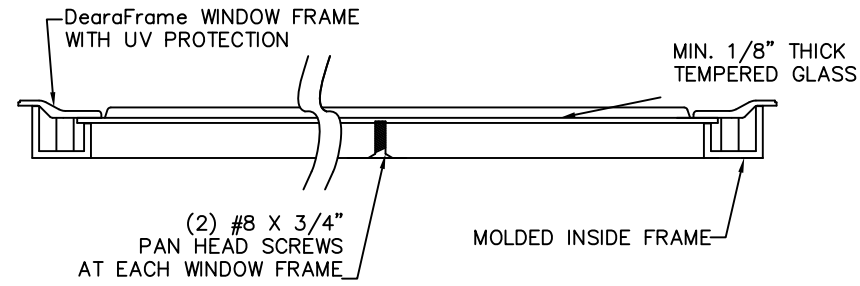
MODEL #500 CLASSICA

SIZE	DRAWN BY DLJ	DATE 05/16/05	DRAWING NUMBER
B	CHECKED BY AAE	DATE 05/16/05	IRC-5318-120-45

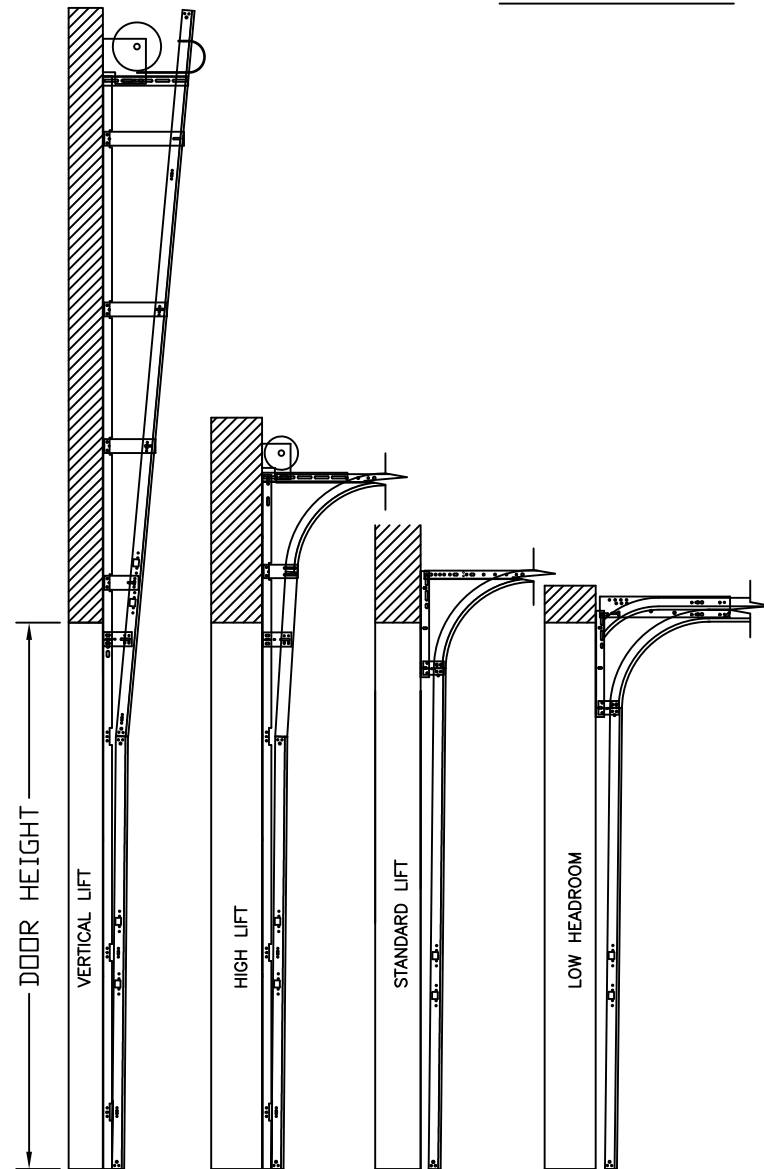
ENGINEER: THOMAS L. SHELME RDINE P.E. LIC. No. 0048579 SHEET 2 OF 3

GLAZING OPTION CROSS SECTION

GLAZING NOT AVAILABLE IN WIND-BORNE DEBRIS REGION
GLAZING MEETS ASTM E1300-04



SECTION B-B



AVAILABLE TRACK CONFIGURATIONS
N.T.S.

TABLE 1

Door Width (ft)	Center Stile Locations (Measured from Left)		
	1st (in)	2nd (in)	3rd (in)
15' 6	47.42	*93.00	138.58
15' 8	48.02	*94.00	139.98
15' 10	48.62	*95.00	141.38
16' 0	48.42	*96.00	143.58
16' 2	48.75	*97.00	145.25
16' 4	49.08	*98.00	146.92
16' 6	49.42	*99.00	148.59
16' 8	49.92	*100.00	150.09
16' 10	50.42	*101.00	151.59
17' 0	50.92	*102.00	153.09
17' 2	51.42	*103.00	154.59
17' 4	51.92	*104.00	156.09
17' 6	52.42	*105.00	157.59
17' 8	52.92	*106.00	159.09
17' 10	53.42	*107.00	160.59
18' 0	53.92	*108.00	162.09

* Post location

TABLE 2

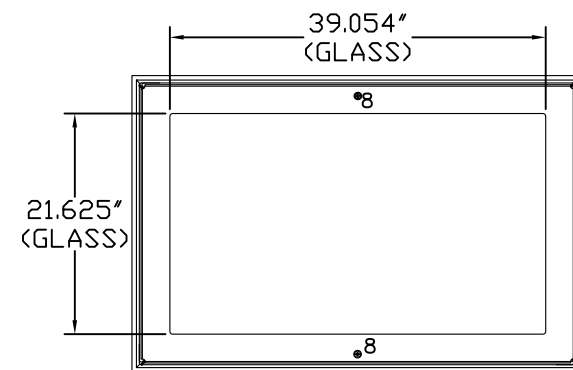
FOR MAX. 8' TALL DOORS CONSTRUCTED USING (1) OR MORE 32" SECTIONS

Door Width (ft)	Max Design Loads Allowed	
	Positive (PSF)	Negative (PSF)
15' 6	25.0	28.4
15' 8	24.7	28.1
15' 10	24.4	27.8
16' 0	24.2	27.5
16' 2	23.9	27.3
16' 4	23.7	27.0
16' 6	23.4	26.7
16' 8	23.2	26.4
16' 10	23.0	26.2
17' 0	22.8	25.9
17' 2	22.5	25.7
17' 4	22.3	25.4
17' 6	22.1	25.2
17' 8	21.9	24.9
17' 10	21.7	24.7
18' 0	21.6	24.6

TABLE 3

FOR 7' TALL DOORS CONSTRUCTED WITH ALL 28" SECTIONS

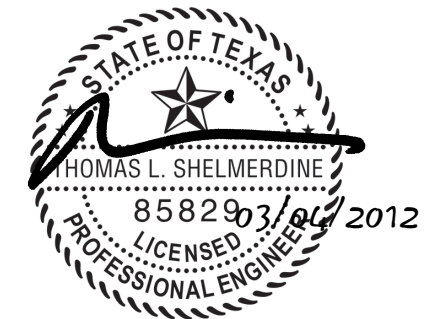
Door Width (ft)	Max Design Loads Allowed	
	Positive (PSF)	Negative (PSF)
15' 6	28.5	32.5
15' 8	28.2	32.1
15' 10	27.9	31.8
16' 0	27.6	31.5
16' 2	27.3	31.1
16' 4	27.1	30.8
16' 6	26.8	30.5
16' 8	26.5	30.2
16' 10	26.3	29.9
17' 0	26.0	29.6
17' 2	25.8	29.3
17' 4	25.5	29.0
17' 6	25.3	28.8
17' 8	25.0	28.5
17' 10	24.8	28.2
18' 0	24.6	28.0



SHORT PANEL GLAZING FASTENER DETAIL
N.T.S.

REV	DESCRIPTION OF REVISIONS	DATE	BY
A	REVISED NOTE 6	09/02/08	DLJ
B	REMOVED TABLES 2-3, NOTE 7.	05/19/09	CBT
C	UPDATED WJATS AND ADDED DOOR VENTS	1/17/12	RLR

MAX SIZE
18' WIDTH
8' HEIGHT
(DOOR HEIGHT SUBJECT TO WEIGHT LIMITATIONS)
DESIGN LOADS
+21.6 PSF
-24.6 PSF
TEST LOADS (1.5 x DESIGN LOADS)
+32.4 PSF
-36.9 PSF



Amarr

165 CARRIAGE COURT WINSTON-SALEM, N.C. 27105

MODEL #500 CLASSICA

SIZE	DRAWN BY	DLJ	DATE	05/16/05	DRAWING NUMBER
B	CHECKED BY	AAE	DATE	05/16/05	IRC-5318-120-45
ENGINEER: THOMAS L. SHELMARDINE P.E. LIC. No. 0048579					SHEET 3 OF 3