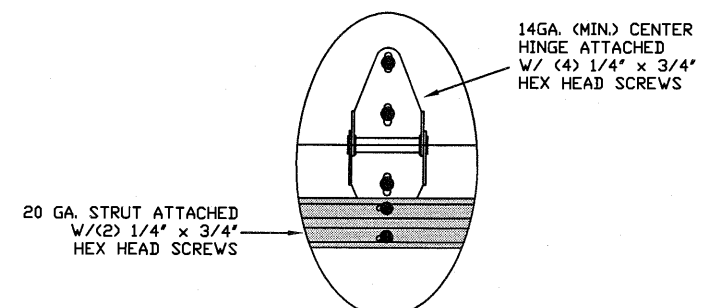
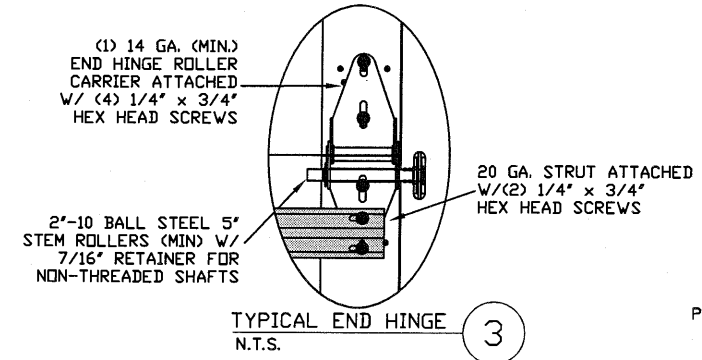
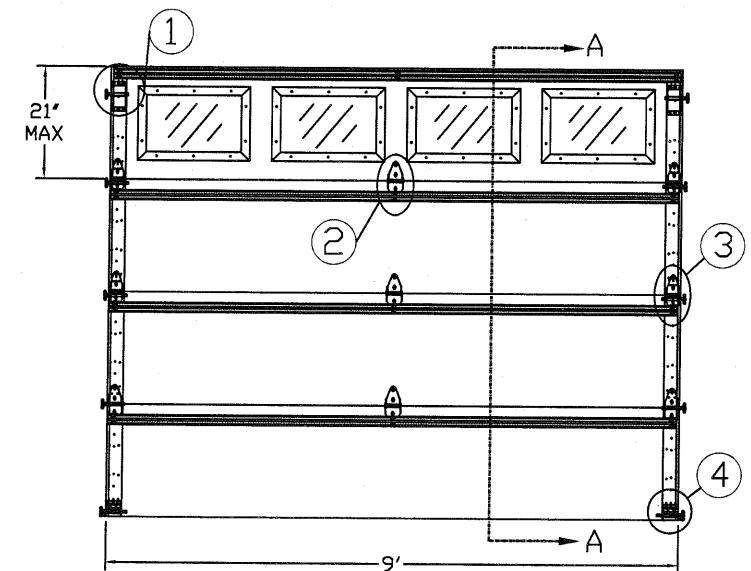


TYPICAL TOP FIXTURES
N.T.S. 1

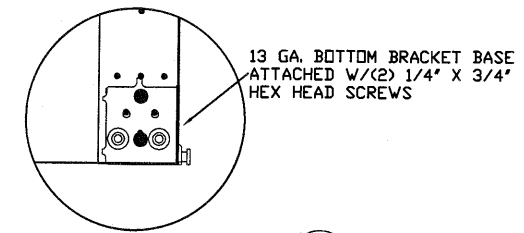


TYPICAL CENTER HINGE
N.T.S. 2

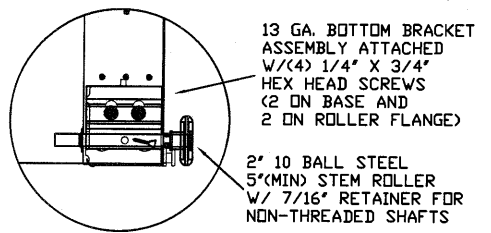


TYPICAL END HINGE
N.T.S. 3

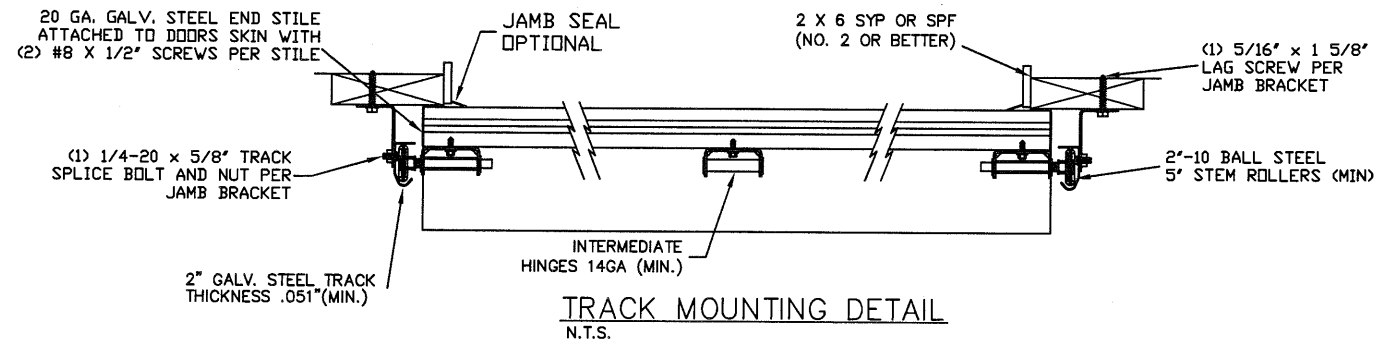
INSIDE ELEVATION
N.T.S.



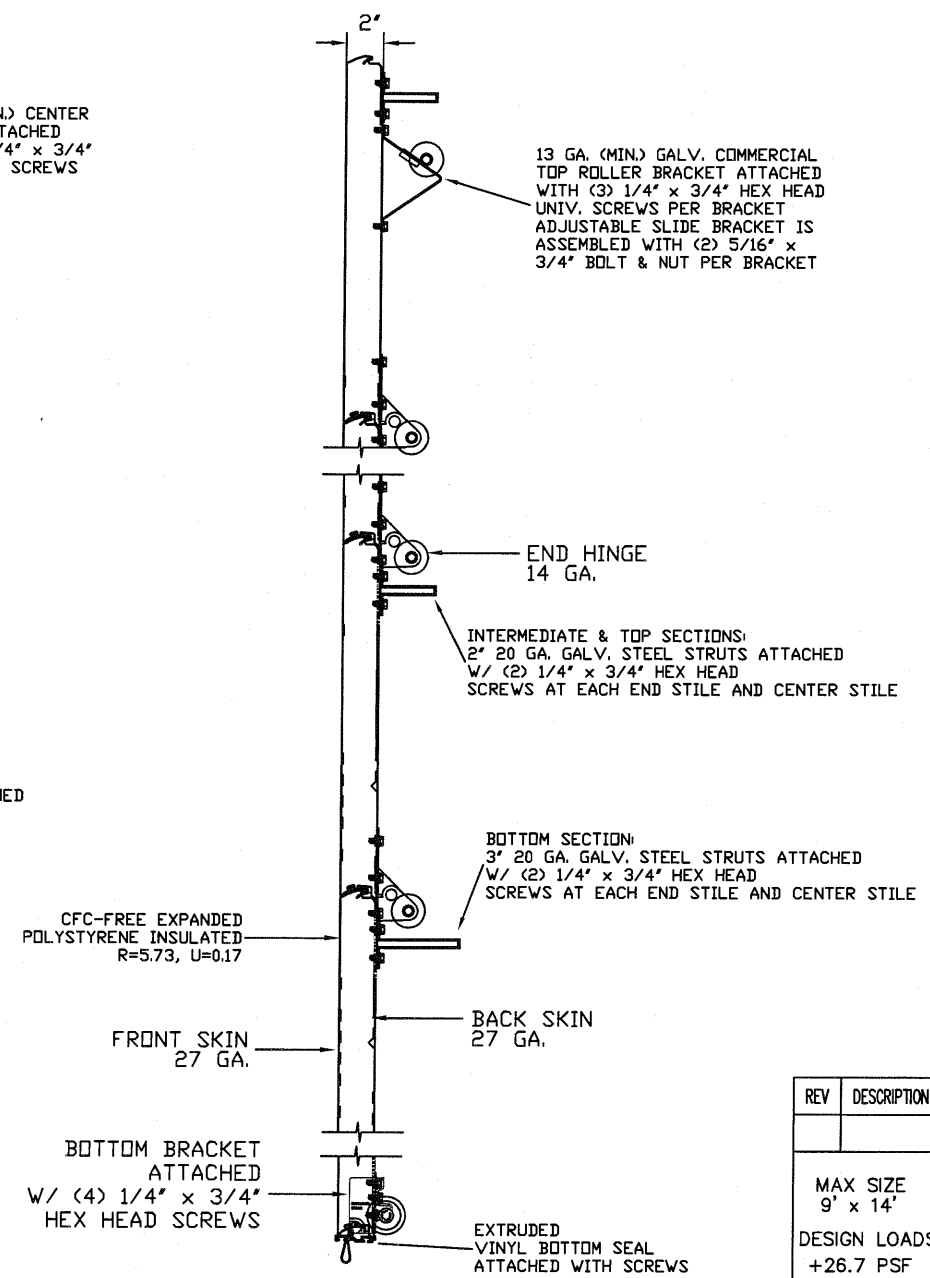
TRBB-375 BOTTOM BRACKET
N.T.S. 4A



TRBB-375 BOTTOM BRACKET
N.T.S. 4B



TRACK MOUNTING DETAIL
N.T.S.



SECTION A-A (SIDE VIEW)
N.T.S.

THE METHOD OF TESTING WAS IN SUBSTANTIAL CONFORMANCE WITH THE PROCEDURE DESCRIBED IN ASTM E330 AND DASHA 108. THE PRESSURES SHOWN ON THE DRAWINGS WERE CALCULATED USING ASCE 7-98/02/05 WITH THE FOLLOWING PARAMETERS (5 FEET OF DOOR WIDTH IN THE END ZONE, ROOF AT ANY SLOPE I=1.0):

WIND SPEED (MPH)	130	118	112	107	103
EXPOSURE LEVEL	B	C	C	D	D
MEAN ROOF HEIGHT	30'	15'	25'	15'	25'

REV	DESCRIPTION OF REVISIONS	DATE	BY

MAX SIZE
9' x 14'

DESIGN LOADS
+26.7 PSF
-31.6 PSF

TEST LOADS
+40.1 PSF
-47.4 PSF

Thomas L. Shelmerdine, PE (TX PE #85829)
Structural Solutions, PA (TX Firm #F-004063)

STATE OF TEXAS
THOMAS L. SHELMERDINE
85829
LICENSED PROFESSIONAL ENGINEER
TX

dba Structural Solutions of North Carolina, Inc.
5921-G W. Friendly Ave., Greensboro, NC 27410

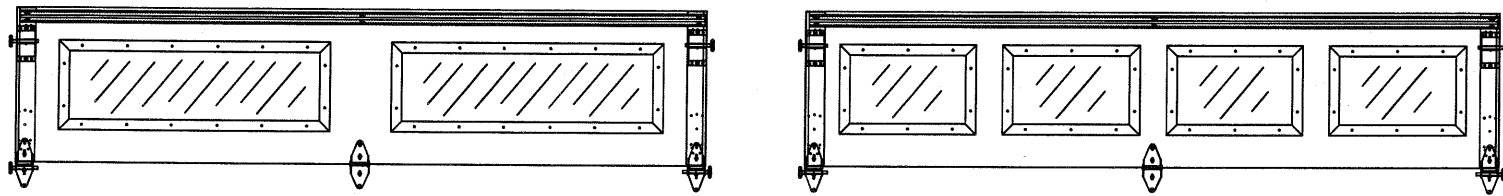
Amarr
165 CARRIAGE COURT WINSTON-SALEM, N.C. 27105 WWW.AMARR.COM

MODEL #1600 LINCOLN 3000
MODEL #1650 HILLCREST 3000

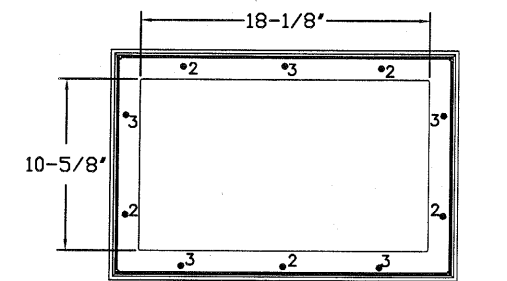
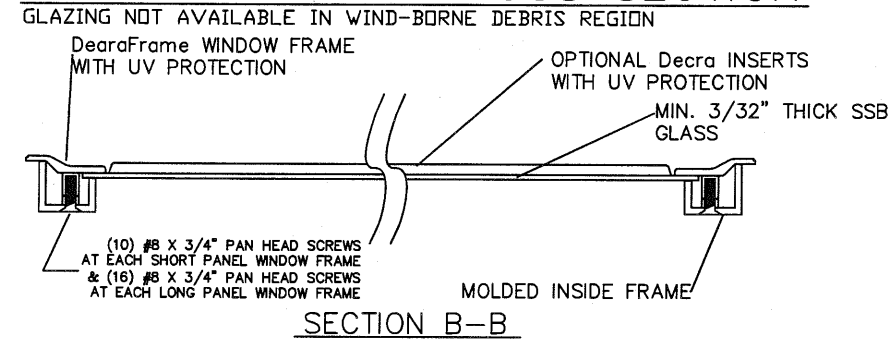
SIZE	DRAWN BY	RLR	DATE	05/21/13	DRAWING NUMBER
B	CHECKED BY		DATE		IRC-1609-130-15

SHEET 1 OF 3

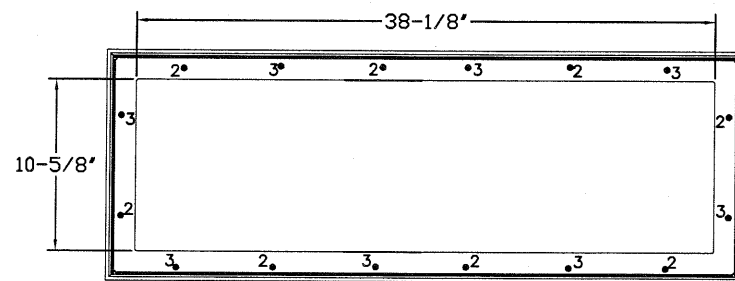
OPTIONAL SHORT AND LONG PANEL GLAZING LAYOUTS
GLAZING MEETS ASTM E1300-04



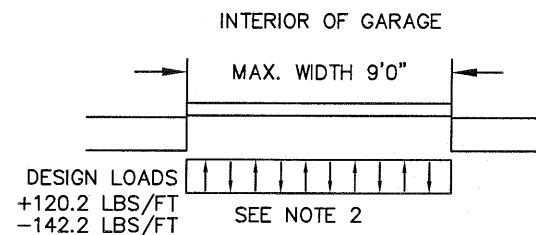
GLAZING OPTION CROSS SECTION



SHORT PANEL GLAZING FASTENER DETAIL
N.T.S.



LONG PANEL GLAZING FASTENER DETAIL
N.T.S.



DESIGN LOADS
+120.2 LBS/FT
-142.2 LBS/FT
SEE NOTE 2

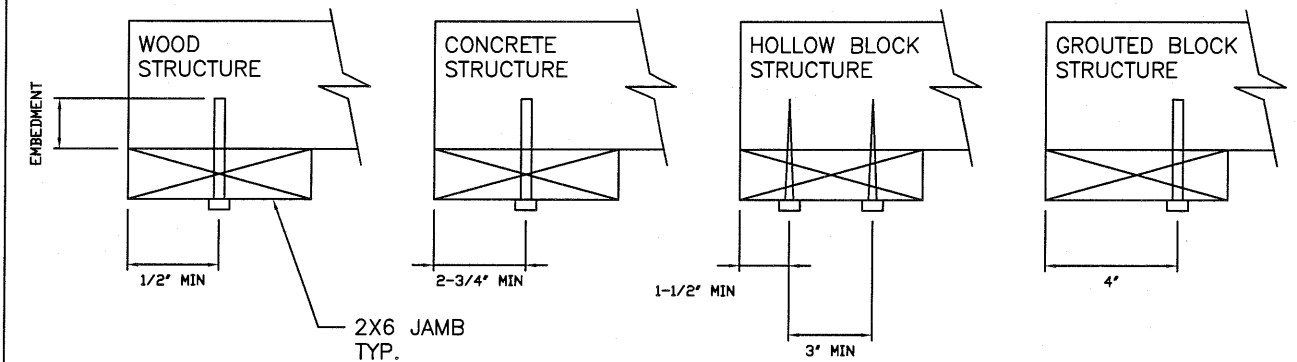
SPECIFICATIONS AND NOTES

1. ALL THE LOAD FROM THE DOOR IS TRANSFERRED TO THE VERTICAL TRACK, FROM THE TRACK THE LOAD IS TRANSFERRED TO THE VERTICAL JAMBS. THE HORIZONTAL JAMB OR HEADER RECEIVES NO PORTION OF THE LOAD TRANSFERRED FROM THE DOOR.
2. EACH VERTICAL JAMBS RECEIVES MAXIMUM DESIGN LOADS OF: +120.2 LBS/FT & -142.2 LBS/FT.
3. DOOR AND HARDWARE WILL BE DESIGNED, MANUFACTURED AND INSTALLED WITH STANDARDS AS SET FORTH BY DASMA.
4. DOOR SECTIONS SHALL BE 27GA MIN. INTERIOR AND 27GA MIN. EXTERIOR SKIN ROLLED FORMED, W/ BAKED ON POLYESTER FINISH.
5. SUPPORTING STRUCTURAL ELEMENTS SHALL BE DESIGNED BY A REGISTERED PROFESSIONAL ENGINEER FOR WIND LOADS INDICATED ON THIS DRAWING IN ADDITION TO OTHER LOADINGS.
6. PANEL STAMP DOES NOT AFFECT WINDLOAD CAPABILITIES.

WOOD JAMB ATTACHMENT TO STRUCTURE

- 2 X 6 VERTICAL JAMB ATTACHMENT TO WOOD FRAME STRUCTURE
5/16" X 3" LAG SCREWS STARTING 6" FROM ENDS THEN 24" O.C. (1 1/2" EMBEDMENT)
- 2 X 6 VERTICAL JAMB ATTACHMENT TO 2,000 PSI CONCRETE
HILTI KWIK BOLT 3/8" X 4" STARTING 6" FROM ENDS THEN 24" O.C. (2 1/2" EMBEDMENT)
HILTI SLEEVE ANCHOR 3/8" X 2-3/4" STARTING 6" FROM ENDS THEN 24" O.C. (1 1/4" EMBEDMENT)
ITW/RAMSET REDHEAD (TRU-BOLT) 3/8" X 4" STARTING 6" FROM ENDS THEN 24" O.C. (2 1/2" EMBEDMENT)
- 2 X 6 VERTICAL JAMB ATTACHMENT TO HOLLOW C-90 BLOCK
SIMPSON 1/4" X 3" TITEN SCREWS STARTING 6" FROM ENDS, USE PAIRS OF FASTENERS (3" APART) AT 24" O.C. (1 1/2" EMBEDMENT)
HILTI 1/4" X 2-3/4" KWIK-CON II+ SCREWS STARTING 6" FROM ENDS, USE PAIRS OF FASTENERS (3" APART) AT 24" O.C. (1 1/4" EMBEDMENT)
- 2 X 6 VERTICAL JAMB ATTACHMENT TO GROUTED C-90 BLOCK (2000 PSI GROUT)
HILTI SLEEVE ANCHOR 3/8" X 2-3/4" STARTING 6" FROM ENDS THEN 24" O.C. (1 1/4" EMBEDMENT)
(OR, USE FASTENERS FOR HOLLOW C-90 BLOCK)

*LAGS AND BOLTS CAN BE COUNTERSUNK TO PROVIDE A FLUSH MOUNTING SURFACE.
*PREPARATION OF WOOD JAMBS BY OTHERS



REV	DESCRIPTION OF REVISIONS	DATE	BY

MAX SIZE
9' x 14'

DESIGN LOADS
+26.7 PSF
-31.6 PSF

TEST LOADS
+40.1 PSF
-47.4 PSF

Thomas L. Shelmerdine, PE (TX PE #85829)
Structural Solutions, PA (TX Firm #F-004063)

STATE OF TEXAS
THOMAS L. SHELMERDINE
85829
LICENSED PROFESSIONAL ENGINEER
TX

dba Structural Solutions of North Carolina, Inc.
5921-G.W. Friendly Ave., Greensboro, NC 27410

Amarr

165 CARRIAGE COURT WINSTON-SALEM, N.C. 27105 WWW.AMARR.COM

MODEL #1600 LINCOLN 3000
MODEL #1650 HILLCREST 3000

SIZE	DRAWN BY	RLR	DATE	05/21/13	DRAWING NUMBER
B	CHECKED BY		DATE		IRC-1609-130-15

SHEET 2 OF 3

TABLE 1

DOOR HEIGHT	SECTION HEIGHTS							
	Btm	#2	#3	#4	#5	#6	#7	#8
6' 0"	18"	18"	18"	18"				
6' 6"	21"	18"	18"	21"				
7' 0"	21"	21"	21"	21"				
7' 6"	18"	18"	18"	18"	18"			
8' 0"	21"	18"	18"	18"	21"			
8' 6"	21"	21"	21"	18"	21"			
9' 0"	18"	18"	18"	18"	18"	18"		
9' 6"	21"	18"	18"	18"	18"	21"		
10' 0"	21"	21"	21"	18"	18"	21"		
10' 6"	21"	21"	21"	21"	21"	21"		
11' 0"	21"	18"	18"	18"	18"	18"	21"	
11' 6"	21"	21"	21"	18"	18"	18"	21"	
12' 0"	21"	21"	21"	21"	21"	18"	21"	
12' 6"	21"	18"	18"	18"	18"	18"	18"	21"
13' 0"	21"	21"	21"	18"	18"	18"	18"	21"
13' 6"	21"	21"	21"	21"	21"	18"	18"	21"
14' 0"	21"	21"	21"	21"	21"	21"	21"	21"

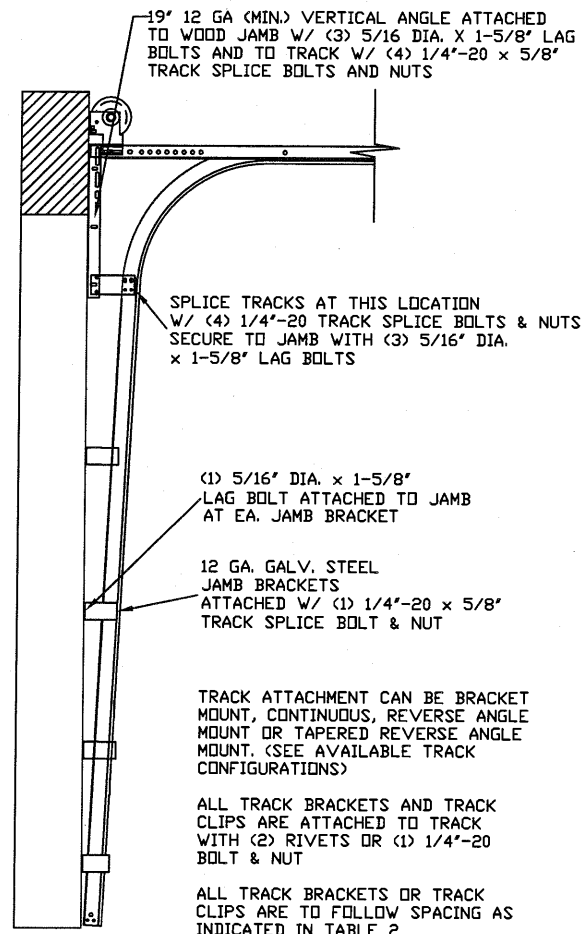
TABLE 2

HEIGHT	TRACK ATTACHMENT								SPLICE
	A	B	C	D	E	F	G	H	
6' 0"	3.5"	21"	42"						64"
6' 6"	3.5"	21"	42"	63"					70"
7' 0"	3.5"	21"	42"	63"					76"
7' 6"	3.5"	21"	42"	63"					82"
8' 0"	3.5"	21"	42"	63"	84"				88"
8' 6"	3.5"	21"	42"	63"	84"				94"
9' 0"	3.5"	21"	42"	63"	84"				100"
9' 6"	3.5"	21"	42"	63"	84"				106"
10' 0"	3.5"	21"	42"	63"	84"	105"			112"
10' 6"	3.5"	21"	42"	63"	84"	105"			118"
11' 0"	3.5"	21"	42"	63"	84"	105"			124"
11' 6"	3.5"	21"	42"	63"	84"	105"	126"		130"
12' 0"	3.5"	21"	42"	63"	84"	105"	126"		136"
12' 6"	3.5"	21"	42"	63"	84"	105"	126"		142"
13' 0"	3.5"	21"	42"	63"	84"	105"	126"		148"
13' 6"	3.5"	21"	42"	63"	84"	105"	126"	147"	154"
14' 0"	3.5"	21"	42"	63"	84"	105"	126"	147"	160"

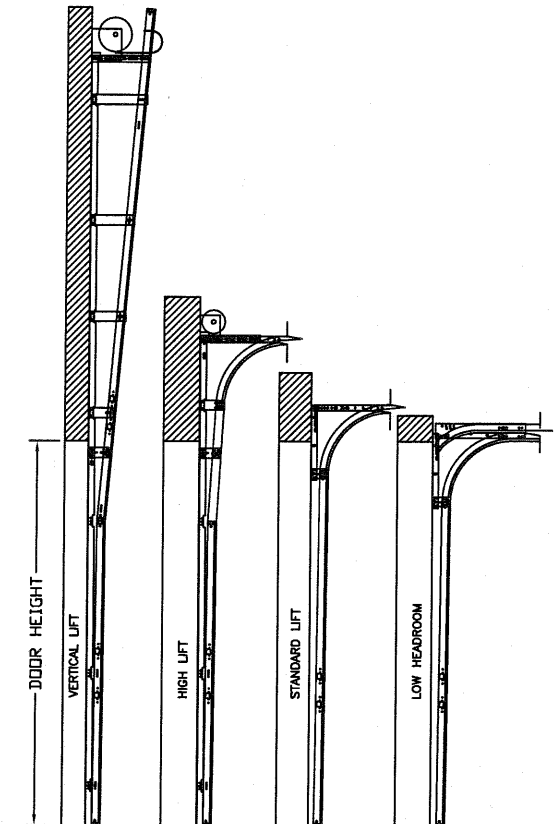
ALL TRACK ATTACHMENT SPACING +/- 2" ALLOWED WITH SYP OR SPF NO. 2 OR BETTER ONLY

TABLE 3

Section	Panel Type	Center Stile Location (Measured from Left Edge)		Max Design Loads Allowed		
		Width (ft)	1st (in)	2nd (in)	Positive (PSF)	Negative (PSF)
6' 0"	Short		24.406	47.594	40.0	47.4
7' 0"	Short		29.200	54.800	34.3	40.6
7' 2"	Short		30.200	55.800	33.5	39.6
7' 4"	Short		31.200	56.800	32.7	38.7
7' 6"	Short		32.200	57.800	32.0	37.9
7' 6"	Long		45.000		32.0	37.9
7' 8"	Short		32.200	60.000	31.3	37.0
7' 8"	Long		46.000		31.3	37.0
7' 10"	Short		33.000	61.000	30.6	36.3
7' 10"	Long		47.000		30.6	36.3
8' 0"	Short		48.000		30.0	35.5
8' 0"	Long		48.000		30.0	35.5
8' 2"	Short		49.000		29.4	34.8
8' 2"	Long		49.000		29.4	34.8
8' 4"	Short		50.000		28.8	34.1
8' 4"	Long		50.000		28.8	34.1
8' 6"	Short		51.000		28.2	33.4
8' 6"	Long		51.000		28.2	33.4
8' 8"	Short		52.000		27.7	32.8
8' 8"	Long		52.000		27.7	32.8
8' 10"	Short		53.000		27.2	32.1
8' 10"	Long		53.000		27.2	32.1
9' 0"	Short		54.000		26.7	31.6
9' 0"	Long		54.000		26.7	31.6



TRACK CONFIGURATION FOR UP TO 14' TALL DOORS



AVAILABLE TRACK CONFIGURATIONS N.T.S.

REV	DESCRIPTION OF REVISIONS	DATE	BY

MAX SIZE 9' x 14'

DESIGN LOADS +26.7 PSF -31.6 PSF

TEST LOADS +40.1 PSF -47.4 PSF

Thomas L. Shelmerdine, PE (TX PE #85829) Structural Solutions, PA (TX Firm #F-004063)

STATE OF TEXAS
 THOMAS L. SHELMERDINE
 85829
 LICENSED PROFESSIONAL ENGINEER
 TX

Amarr

165 CARRIAGE COURT WINSTON-SALEM, N.C. 27105 WWW.AMARR.COM

MODEL #1600 LINCOLN 3000
 MODEL #1650 HILLCREST 3000

SIZE	DRAWN BY	RLR	DATE	05/21/13	DRAWING NUMBER
B	CHECKED BY		DATE		IRC-1609-130-15

SHEET 3 OF 3

dba Structural Solutions of North Carolina, Inc. 5921-G.W. Friendly Ave., Greensboro, NC 27410