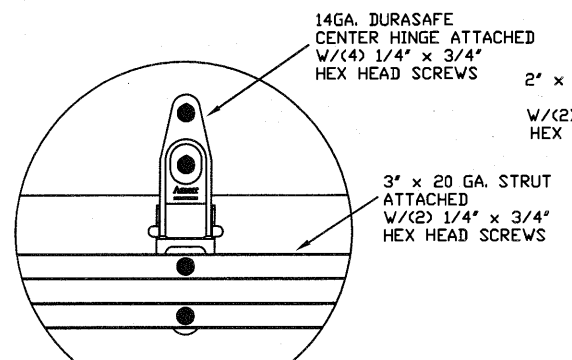
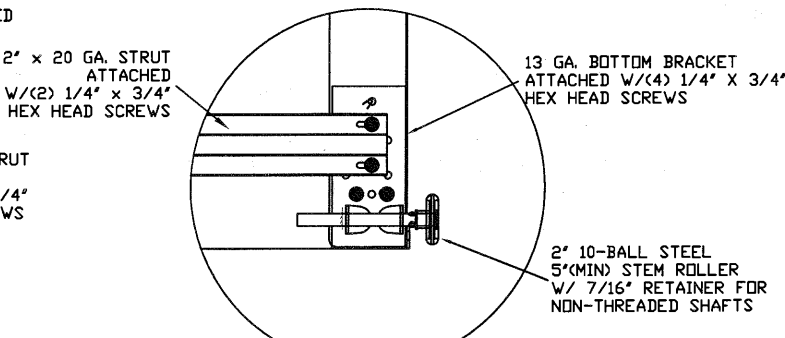


TYPICAL TOP FIXTURES  
N.T.S. ①



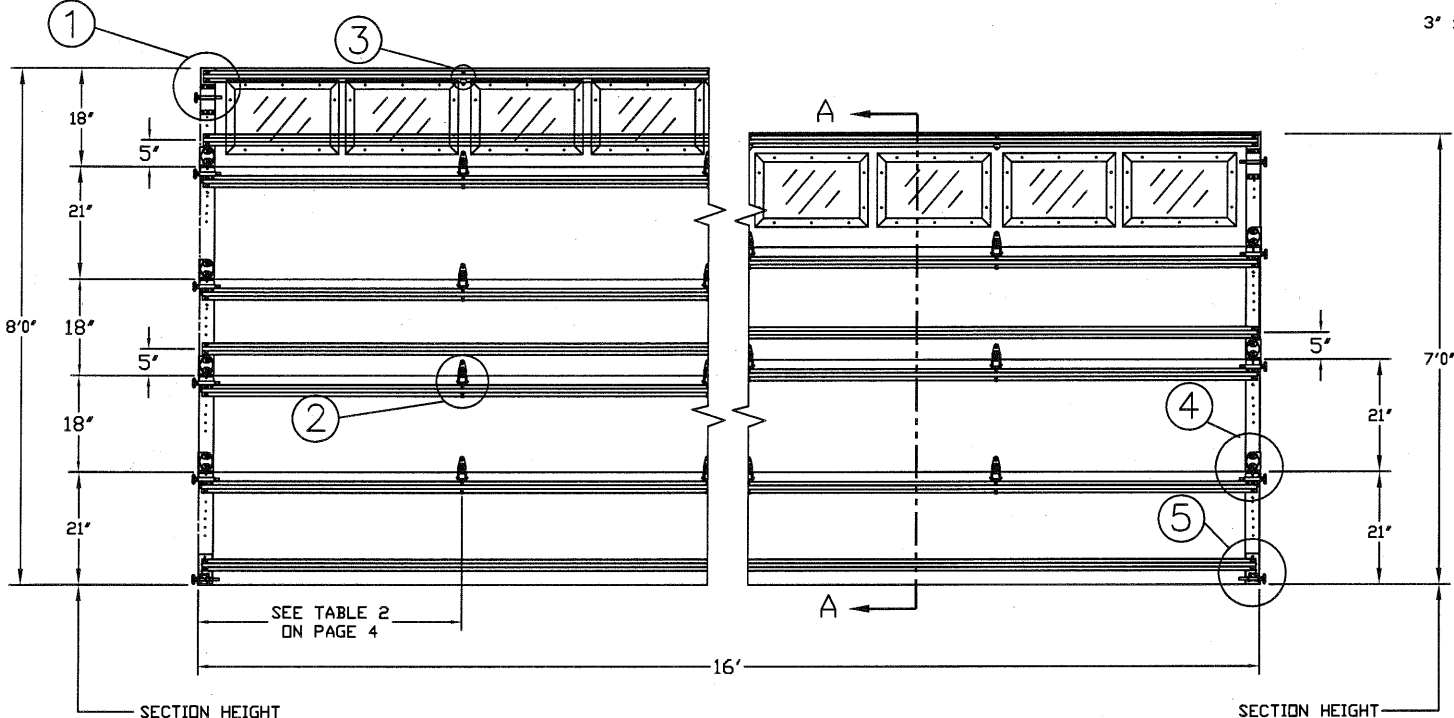
TYPICAL DURASAFE CENTER HINGE  
N.T.S. ②



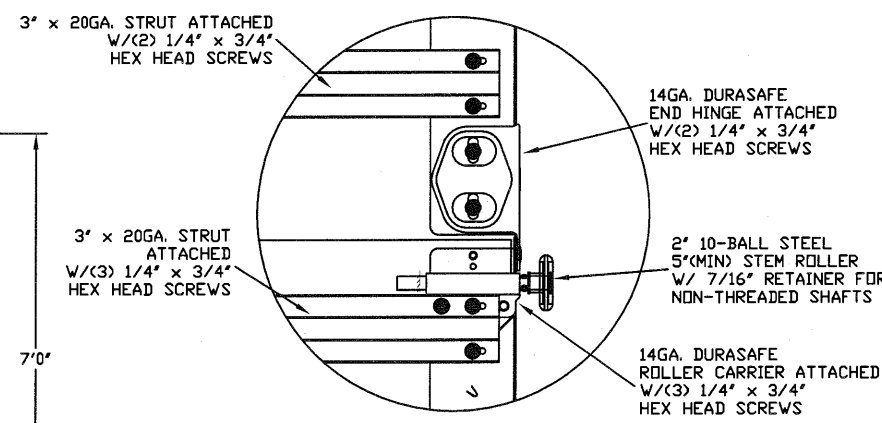
TYPICAL BOTTOM BRACKET  
N.T.S. ⑤

SPECIFICATIONS AND NOTES

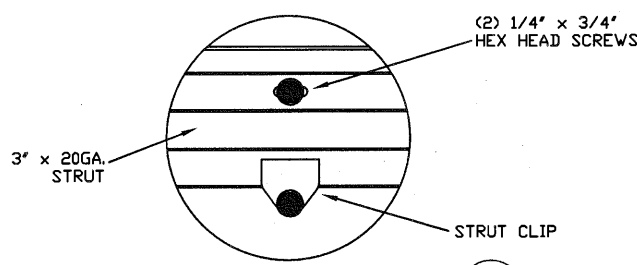
1. ALL THE LOAD FROM THE DOOR IS TRANSFERRED TO THE VERTICAL TRACK, FROM THE TRACK THE LOAD IS TRANSFERRED TO THE VERTICAL JAMBS. THE HORIZONTAL JAMB OR HEADER RECEIVES NO PORTION OF THE LOAD TRANSFERRED FROM THE DOOR.
2. EACH VERTICAL JAMBS RECEIVES MAXIMUM DESIGN LOADS OF: +146.4 LBS/FT & -166.4 LBS/FT
3. DOOR AND HARDWARE WILL BE DESIGNED, MANUFACTURED AND INSTALLED WITH STANDARDS AS SET FORTH BY DASMA.
4. DOOR SECTIONS SHALL BE 27 GA. (.016) MIN. EXTERIOR SKIN ROLLED FORMED, W/ BAKED ON POLYESTER FINISH
5. SUPPORTING STRUCTURAL ELEMENTS SHALL BE DESIGNED BY A REGISTERED PROFESSIONAL ENGINEER FOR WIND LOADS INDICATED ON THIS DRAWING IN ADDITION TO OTHER LOADINGS.



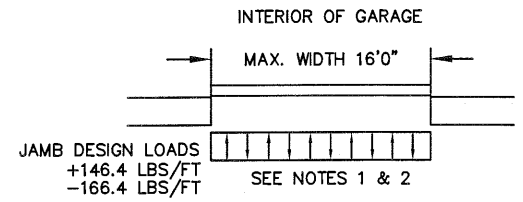
INSIDE ELEVATION  
N.T.S.



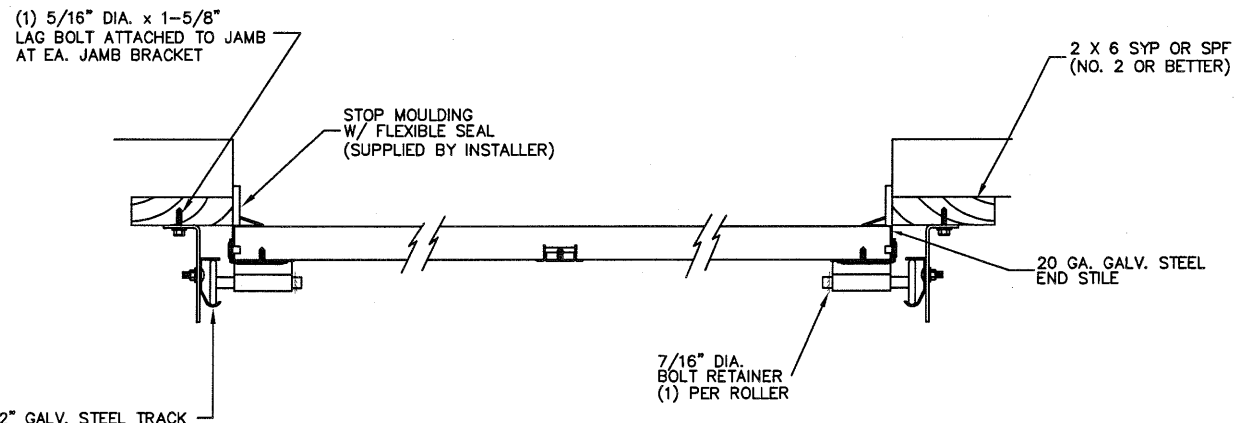
TYPICAL DURASAFE END HINGE  
N.T.S. ④



TYPICAL TOP STRUT ATTACHMENT  
N.T.S. ③



JAMB DESIGN LOADS  
+146.4 LBS/FT  
-166.4 LBS/FT  
SEE NOTES 1 & 2



TRACK MOUNTING DETAIL  
N.T.S.

THE METHOD OF TESTING WAS IN SUBSTANTIAL CONFORMANCE WITH THE PROCEDURE DESCRIBED IN DASMA 108. THE PRESSURES SHOWN ON THE DRAWINGS WERE CALCULATED USING ASCE 7-98/02/05 WITH THE FOLLOWING PARAMETERS (5 FEET OF DOOR WIDTH IN THE END ZONE, ROOF AT ANY SLOPE, AND I=1.0):

WIND SPEED (MPH)	110	100	95	91	87
EXPOSURE LEVEL	B	C	C	D	D
MEAN ROOF HEIGHT	30'	15'	25'	15'	25'

REV	DESCRIPTIONS OF REVISIONS	DATE	BY

MAX SIZE 16' x 14'

DESIGN LOADS  
+18.3 PSF  
-20.8 PSF

TEST LOADS  
+27.5 PSF  
-31.2 PSF

Thomas L. Shelmerdine, PE (TX PE #85829)  
Structural Solutions, PA (TX Firm #F-004063)

STATE OF TEXAS  
THOMAS L. SHELMERDINE  
85829  
LICENSED PROFESSIONAL ENGINEER  
TX

5921-G W. Friendly Ave., Greensboro, NC 27410

**ENTRE//MATIC**

165 CARRIAGE COURT WINSTON-SALEM, N.C. 27105

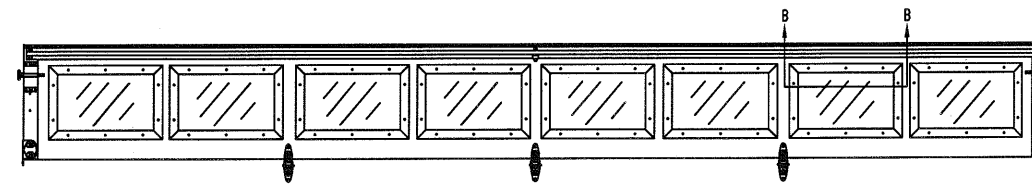
MODEL #1500 AMARR STRATFORD 3000  
MODEL #1200 AMARR HERITAGE 3000  
MODEL #1550 AMARR OAK SUMMIT 3000  
SHORT, LONG, FLUSH & OAK SUMMIT PANELS

SIZE	DRAWN BY RLR	DATE 04/22/14	DRAWING NUMBER
B	CHECKED BY RLR	DATE 04/22/14	IRC-1516-110-15

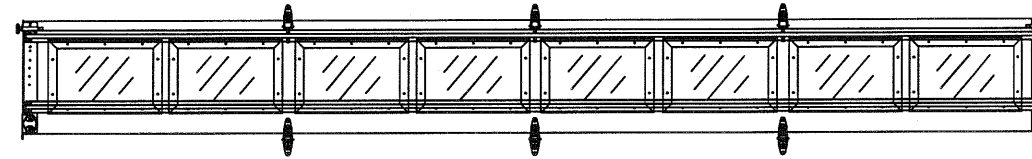
SHEET 1 OF 4

# OPTIONAL SHORT AND LONG PANEL GLAZING LAYOUTS

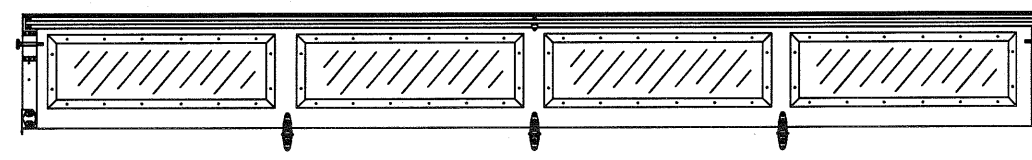
GLAZING MEETS ASTM E1300-04



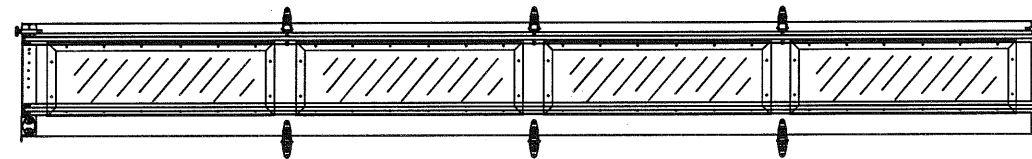
TOP SECTION



INTERMEDIATE SECTION



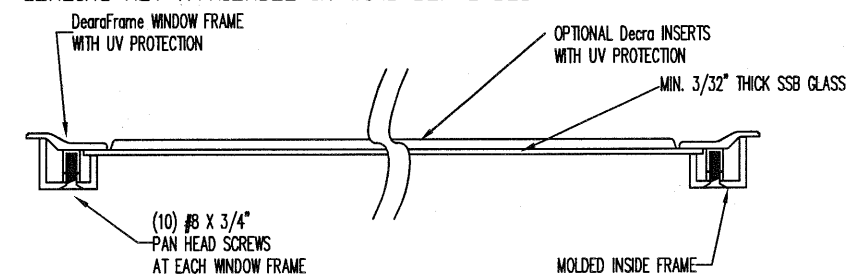
TOP SECTION



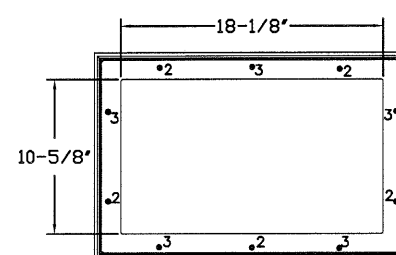
INTERMEDIATE SECTION

## GLAZING OPTION CROSS SECTION

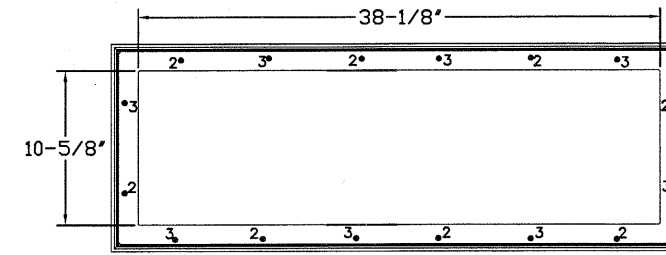
GLAZING NOT AVAILABLE IN WIND-BORNE DEBRIS REGION



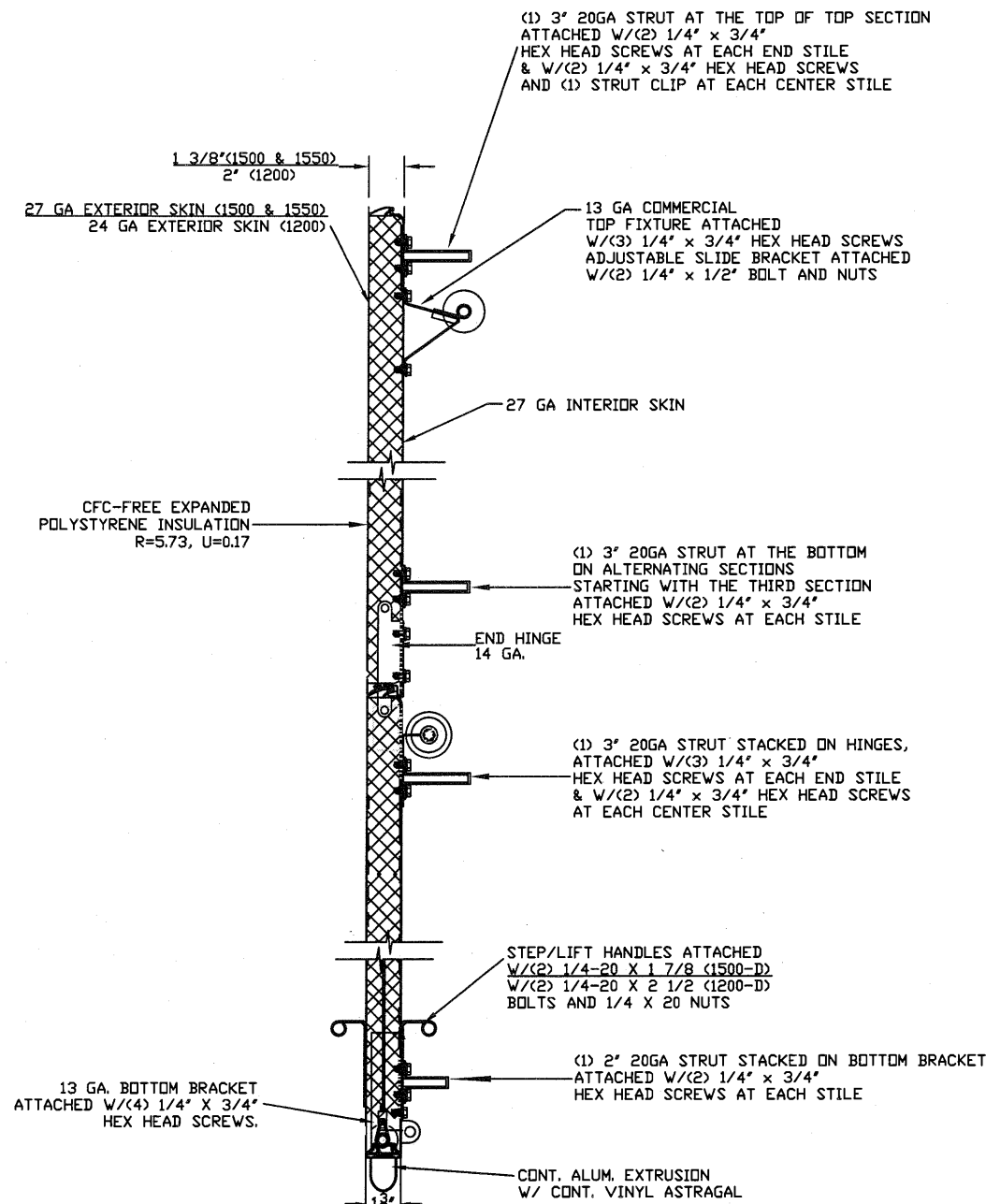
SECTION B-B



SHORT PANEL GLAZING FASTENER DETAIL  
N.T.S.



LONG PANEL GLAZING FASTENER DETAIL  
N.T.S.



SECTION A-A (SIDE VIEW)  
N.T.S.

REV	DESCRIPTIONS OF REVISIONS	DATE	BY

MAX SIZE  
16' x 14'

DESIGN LOADS  
+18.3 PSF  
-20.8 PSF

TEST LOADS  
+27.5 PSF  
-31.2 PSF

TX

Thomas L. Shelmerdine, PE (TX PE #85829)  
Structural Solutions, PA (TX Firm #F-004063)

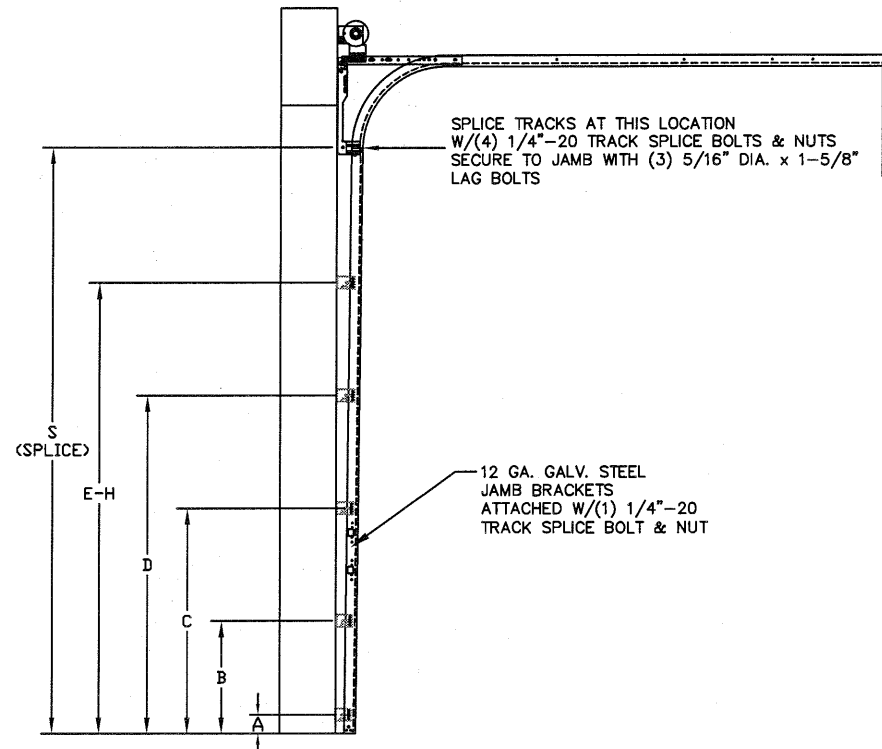
5921-G W. Friendly Ave., Greensboro, NC 27410

## ENTRE//MATIC

165 CARRIAGE COURT WINSTON-SALEM, N.C. 27105

**MODEL #1500 AMARR STRATFORD 3000**  
**MODEL #1200 AMARR HERITAGE 3000**  
**MODEL #1550 AMARR OAK SUMMIT 3000**  
 SHORT, LONG, FLUSH & OAK SUMMIT PANELS

SIZE	DRAWN BY	RLR	DATE	04/22/14	DRAWING NUMBER
B	CHECKED BY	RLR	DATE	04/22/14	IRC-1516-110-15



TRACK CONFIGURATION FOR 6'6" UP TO 14' TALL DOORS (SEE TABLE 1)  
N.T.S.

TABLE 1

DOOR HEIGHT	TRACK ATTACHMENT								SPLICE
	A	B	C	D	E	F	G	H	
6' 6"	10"	21"	42"	63"					70"
7'	10"	21"	42"	63"					76"
7' 6"	10"	21"	42"	63"					82"
8'	10"	21"	42"	63"					88"
8' 6"	10"	21"	42"	63"	84"				94"
9'	10"	21"	42"	63"	84"				100"
9' 6"	10"	21"	42"	63"	84"				106"
10'	10"	21"	42"	63"	84"	105"			112"
10' 6"	10"	21"	42"	63"	84"	105"			118"
11'	10"	21"	42"	63"	84"	105"			124"
11' 6"	10"	21"	42"	63"	84"	105"			130"
12'	10"	21"	42"	63"	84"	105"	126"		136"
12' 6"	10"	21"	42"	63"	84"	105"	126"		142"
13'	10"	21"	42"	63"	84"	105"	126"		148"
13' 6"	10"	21"	42"	63"	84"	105"	126"	147"	154"
14'	10"	21"	42"	63"	84"	105"	126"	147"	160"

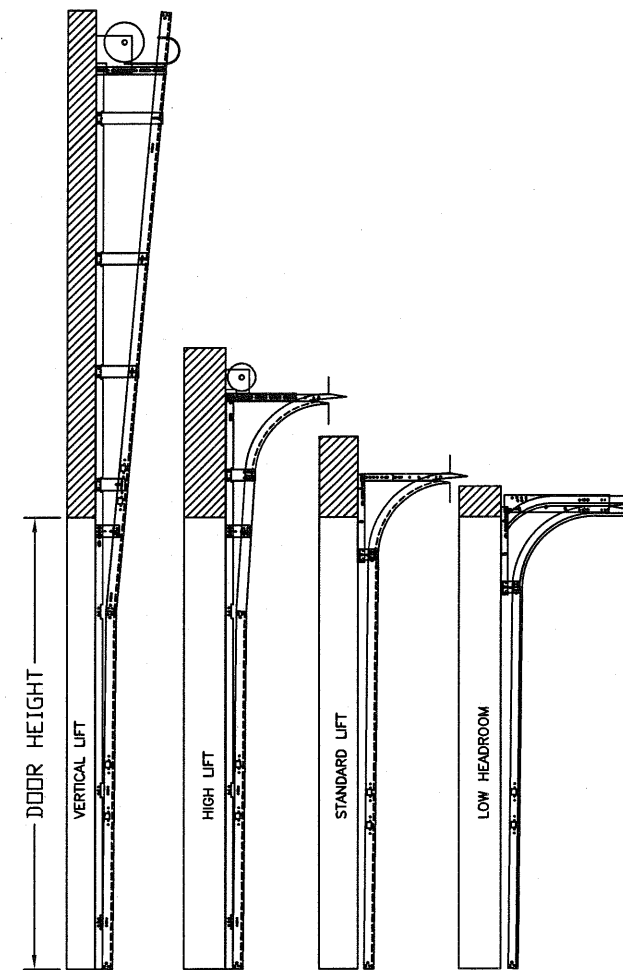
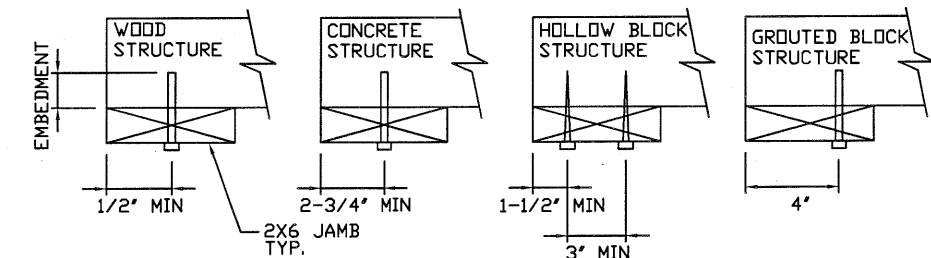
ALL TRACK ATTACHMENT SPACING +/-2" ALLOWED WITH SYP OR SPF NO. 2 OR BETTER ONLY

## WOOD JAMB ATTACHMENT TO STRUCTURE

**2 X 6 VERTICAL JAMB ATTACHMENT TO WOOD FRAME STRUCTURE**  
 5/16" X 3" LAG SCREWS STARTING 6" FROM ENDS THEN 24" O.C. (1 1/2" EMBEDMENT)  
**2 X 6 VERTICAL JAMB ATTACHMENT TO 2,000 PSI CONCRETE**  
 HILTI KWIK BOLT 3/8" X 4" STARTING 6" FROM ENDS THEN 24" O.C. (2 1/2" EMBEDMENT)  
 HILTI SLEEVE ANCHOR 3/8" X 2-3/4" STARTING 6" FROM ENDS THEN 24" O.C. (1 1/4" EMBEDMENT)  
 ITW/RAMSET REDHEAD (TRU-BOLT) 3/8" X 4" STARTING 6" FROM ENDS THEN 24" O.C. (2 1/2" EMBEDMENT)  
**2 X 6 VERTICAL JAMB ATTACHMENT TO HOLLOW C-90 BLOCK**  
 SIMPSON 1/4" X 3" TITEN SCREWS STARTING 6" FROM ENDS, USE PAIRS OF FASTENERS (3" APART) AT 24" O.C. (1 1/2" EMBEDMENT)  
 HILTI 1/4" X 2-3/4" KWIK-CON II+ SCREWS STARTING 6" FROM ENDS, USE PAIRS OF FASTENERS (3" APART) AT 24" O.C. (1 1/4" EMBEDMENT)

**2 X 6 VERTICAL JAMB ATTACHMENT TO GROUTED C-90 BLOCK (2000 PSI GROUT)**  
 HILTI SLEEVE ANCHOR 3/8" X 2-3/4" STARTING 6" FROM ENDS THEN 24" O.C. (1 1/4" EMBEDMENT) (OR, USE FASTENERS FOR HOLLOW C-90 BLOCK)

\*LAGS AND BOLTS CAN BE COUNTERSUNK TO PROVIDE A FLUSH MOUNTING SURFACE.  
 \*PREPARATION OF WOOD JAMBS BY OTHERS



AVAILABLE TRACK CONFIGURATIONS  
N.T.S.

REV	DESCRIPTIONS OF REVISIONS	DATE	BY

MAX SIZE  
16' x 14'

DESIGN LOADS  
+18.3 PSF  
-20.8 PSF

TEST LOADS  
+27.5 PSF  
-31.2 PSF

Thomas L. Shelmerdine, PE (TX PE #85829)  
Structural Solutions, PA (TX Firm #F-004063)

STATE OF TEXAS  
THOMAS L. SHELMERDINE  
85829  
LICENSED PROFESSIONAL ENGINEER  
TX

5921-G W. Friendly Ave., Greensboro, NC 27410

**ENTREMATIIC**

165 CARRIAGE COURT WINSTON-SALEM, N.C. 27105

MODEL #1500 AMARR STRATFORD 3000  
 MODEL #1200 AMARR HERITAGE 3000  
 MODEL #1550 AMARR OAK SUMMIT 3000  
 SHORT, LONG, FLUSH & OAK SUMMIT PANELS

SIZE	DRAWN BY	RLR	DATE	04/22/14	DRAWING NUMBER
B	CHECKED BY	RLR	DATE	04/22/14	IRC-1516-110-15

SHEET 3 OF 4

