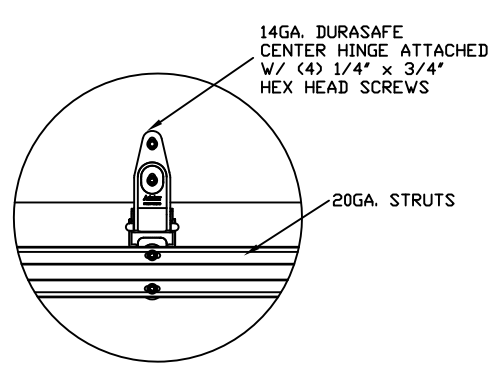
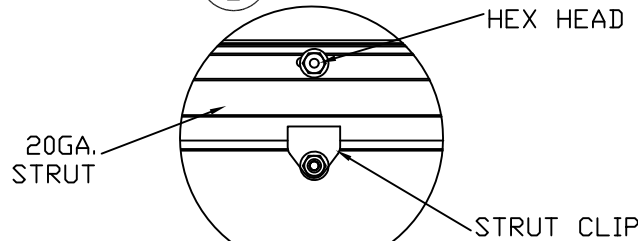


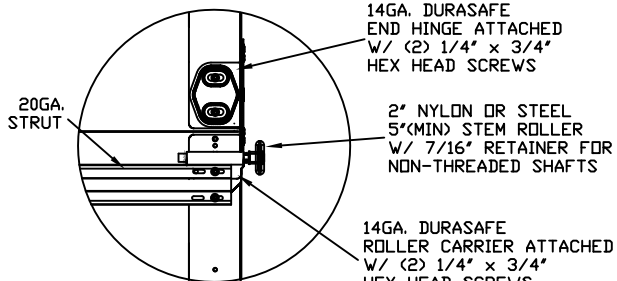
INSIDE ELEVATION



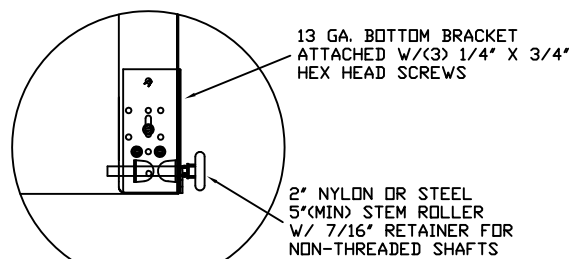
TYPICAL DURASAFE CENTER HINGE S1 2



TYPICAL TOP STRUT ATTACHMENT S1 3

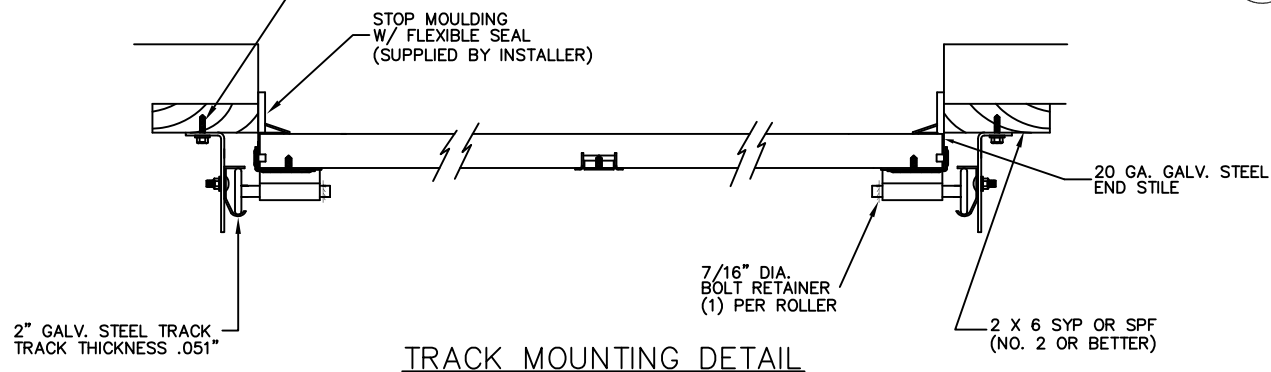


TYPICAL DURASAFE END HINGE S1 4



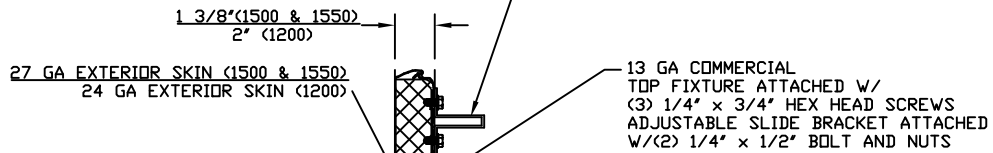
TYPICAL BOTTOM BRACKET S1 5

(1) 5/16" DIA. x 1-5/8" LAG BOLT ATTACHED TO JAMB AT EA. JAMB BRACKET

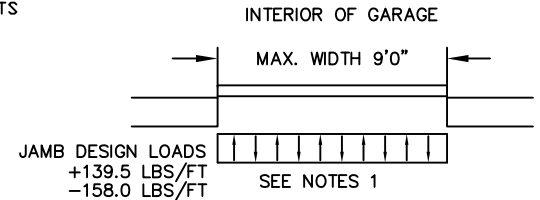


TRACK MOUNTING DETAIL

(1) 20GA STRUT PER SECTION ALTERNATING BETWEEN 3' & 2' STARTING WITH 3' STRUT ON THE BOTTOM SECTION. ALL STRUTS ATTACHED W/ (2) 1/4\"/>



SECTION A-A (SIDE VIEW)



SPECIFICATIONS AND NOTES

- DOORS AND HARDWARE WILL BE DESIGNED, MANUFACTURED AND INSTALLED WITH STANDARDS AS SET FORTH BY DASMA.
- DOOR SECTIONS SHALL BE 27 GA. MIN. (.016") INTERIOR AND EXTERIOR ROLLED FORMED LIGHT COMMERCIAL QUALITY
- DOORS UPTO 7'0" HIGH CONSIST OF (4) SECTIONS AS SHOWN.
- DOORS UPTO 8'0" HIGH CONSIST OF (5) SECTIONS AS SHOWN.
- SUPPORTING STRUCTURAL ELEMENTS SHALL BE DESIGNED BY A REGISTERED PROFESSIONAL ENGINEER FOR WIND LOADS INDICATED ON THIS DRAWING IN ADDITION TO OTHER LOADINGS.

REV	DESCRIPTIONS OF REVISIONS	DATE	BY
	MAX SIZE 9' x 8'		
	DESIGN LOADS +31.0 PSF -35.1 PSF		
	TEST LOADS +46.5 PSF -52.7 PSF		

THE METHOD OF TESTING WAS IN SUBSTANTIAL CONFORMANCE WITH THE PROCEDURE DESCRIBED IN ASTM E330 AND DASMA 108. THE PRESSURES SHOWN ON THE DRAWINGS WERE CALCULATED USING ASCE 7-98/02/05 WITH THE FOLLOWING PARAMETERS (5 FEET OF DOOR WIDTH IN THE END ZONE, ROOF AT ANY SLOPE):

WIND SPEED (MPH)	137	124	118	113	108
EXPOSURE LEVEL	B	C	C	D	D
MEAN ROOF HEIGHT	30'	15'	25'	15'	25'

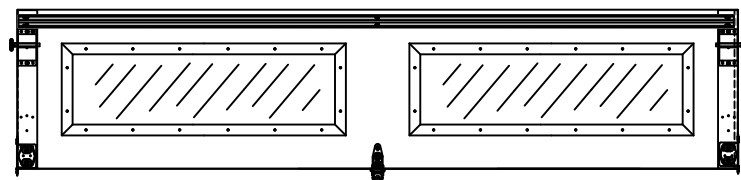
Amarr

165 CARRIAGE COURT WINSTON-SALEM, N.C. 27105 WWW.AMARR.COM

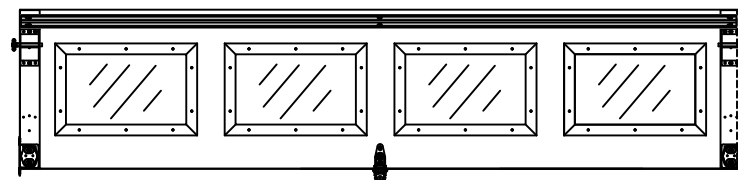
MODEL #1500 STRATFORD 3000
 MODEL #1200 HERITAGE 3000
 MODEL #1550 OAK SUMMIT 3000
 SHORT, LONG, FLUSH & OAK SUMMIT PANELS

SIZE	DRAWN BY	RLR	DATE	03/01/12	DRAWING NUMBER
B	CHECKED BY		DATE		IRC-1509-140-15

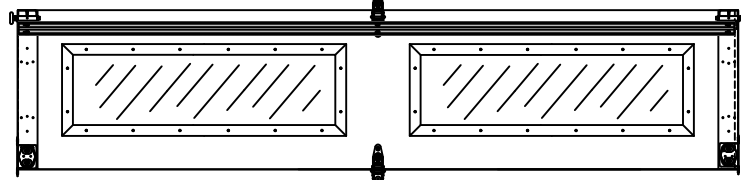
OPTIONAL SHORT AND LONG PANEL GLAZING LAYOUTS
GLAZING MEETS ASTM E1300-04



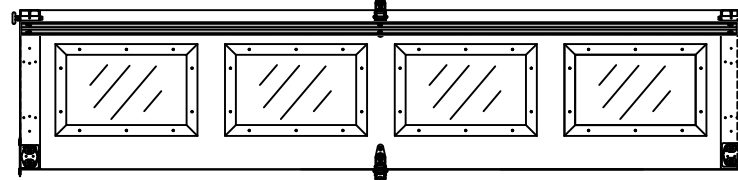
TOP SECTION



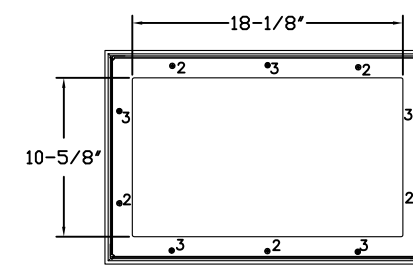
TOP SECTION



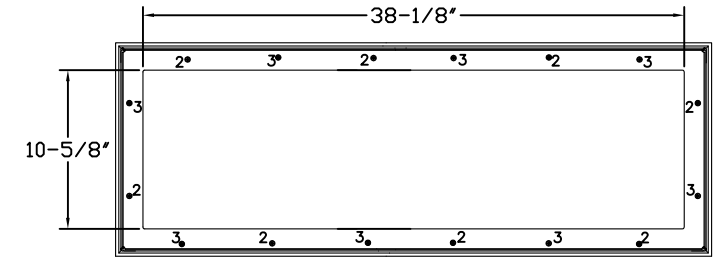
INTERMEDIATE SECTION



INTERMEDIATE SECTION



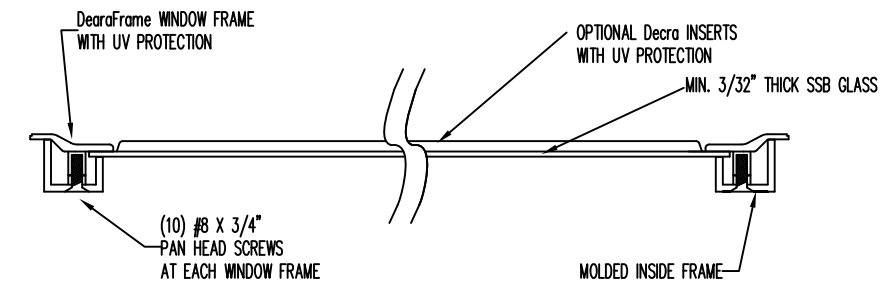
SHORT PANEL GLAZING FASTENER DETAIL
N.T.S.



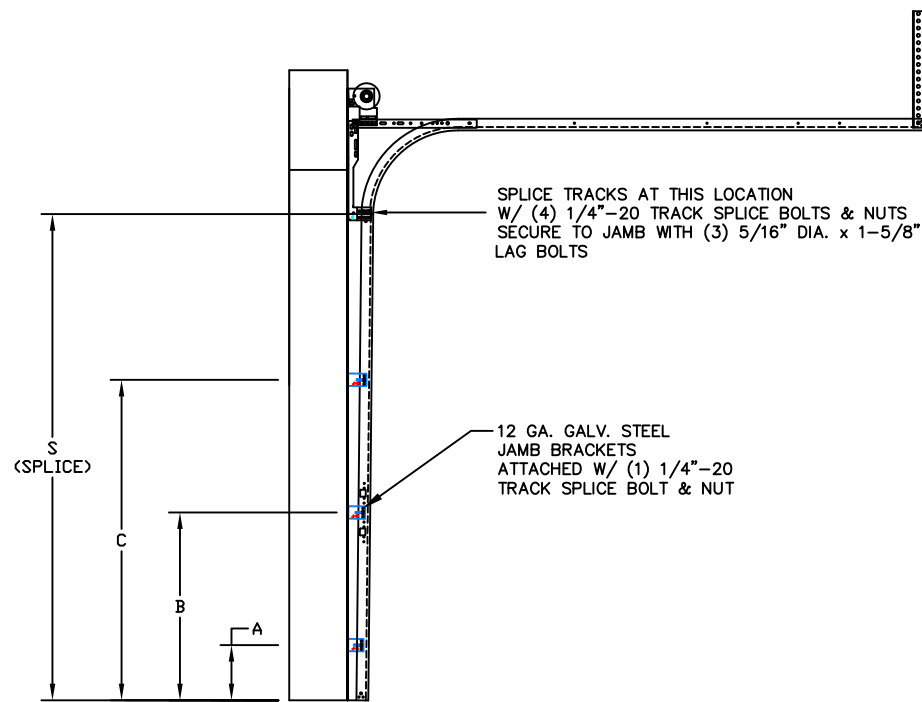
LONG PANEL GLAZING FASTENER DETAIL
N.T.S.

GLAZING OPTION CROSS SECTION

GLAZING NOT AVAILABLE IN WIND-BORNE DEBRIS REGION



SECTION B-B



SPLICE TRACKS AT THIS LOCATION
W/ (4) 1/4"-20 TRACK SPLICE BOLTS & NUTS
SECURE TO JAMB WITH (3) 5/16" DIA. x 1-5/8"
LAG BOLTS

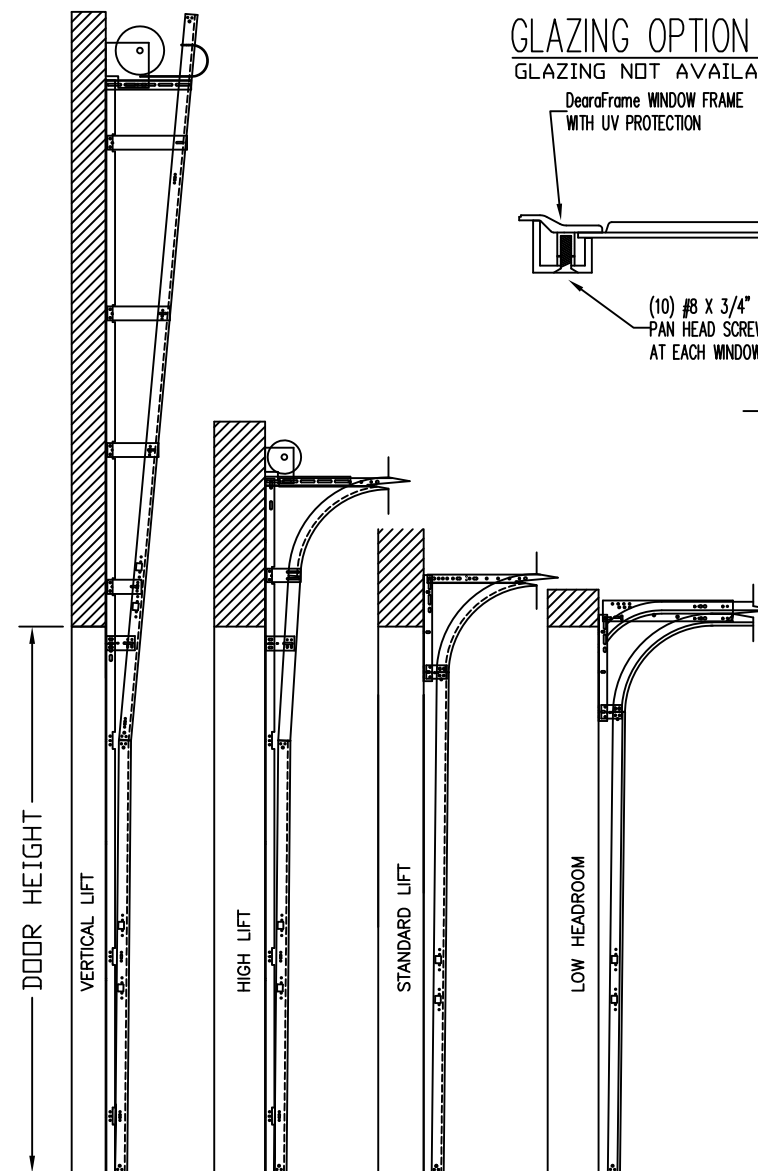
12 GA. GALV. STEEL
JAMB BRACKETS
ATTACHED W/ (1) 1/4"-20
TRACK SPLICE BOLT & NUT

TRACK CONFIGURATION FOR 6'6" UP TO 8' TALL DOORS

JAMB BRACKET LOCATIONS

	A	B	C	S
6'-6"	10"	38"		70"
7'-0"	10"	38"	58"	76"
7'-6"	10"	34"	58"	82"
8'-0"	10"	34"	58"	88"

ALL TRACK ATTACHMENT SPACING +/- 2"
WITH SYP OR SPF NO. 2 OR BETTER ONLY



AVAILABLE TRACK CONFIGURATIONS
N.T.S.

REV	DESCRIPTIONS OF REVISIONS	DATE	BY

MAX SIZE
9' x 8'

DESIGN LOADS
+31.0 PSF
-35.1 PSF

TEST LOADS
+46.5 PSF
-52.7 PSF



Amarr

165 CARRIAGE COURT WINSTON-SALEM, N.C. 27105 WWW.AMARR.COM

MODEL #1500 STRATFORD 3000
MODEL #1200 HERITAGE 3000
MODEL #1550 OAK SUMMIT 3000
SHORT, LONG, FLUSH & OAK SUMMIT PANELS

SIZE	DRAWN BY	RLR	DATE	03/01/12	DRAWING NUMBER
B	CHECKED BY		DATE		IRC-1509-140-15

TABLE 1

Section	Panel Type	Center Stile Location (Measured from Left Edge)		Max Design Loads Allowed	
		1st (in)	2nd (in)	Positive (PSF)	Negative (PSF)
6'0	Short	24.406	47.594	46.5	52.6
6'0	Oak Summit	24.644	47.357	46.5	52.6
7'0	Short	29.200	54.800	39.8	45.1
7'0	Oak Summit	29.144	54.857	39.8	45.1
7'2	Short	30.200	55.800	38.9	44.0
7'2	Oak Summit	29.894	56.107	38.9	44.0
7'4	Short	31.200	56.800	38.0	43.0
7'4	Oak Summit	30.644	57.357	38.0	43.0
7'6	Short	32.200	57.800	37.2	42.1
7'6	Long	45.000		37.2	42.1
7'6	Oak Summit	45.000		37.2	42.1
7'8	Short	32.200	60.000	36.3	41.2
7'8	Long	46.000		36.3	41.2
7'8	Oak Summit	46.000		36.3	41.2
7'10	Short	33.000	61.000	35.6	40.3
7'10	Long	47.000		35.6	40.3
7'10	Oak Summit	47.000		35.6	40.3
8'0	Short	48.000		34.8	39.4
8'0	Long	48.000		34.8	39.4
8'0	Oak Summit	48.000		34.8	39.4
8'2	Short	49.000		34.1	38.6
8'2	Long	49.000		34.1	38.6
8'2	Oak Summit	49.000		34.1	38.6
8'4	Short	50.000		33.4	37.9
8'4	Long	50.000		33.4	37.9
8'4	Oak Summit	50.000		33.4	37.9
8'6	Short	51.000		32.8	37.1
8'6	Long	51.000		32.8	37.1
8'6	Oak Summit	51.000		32.8	37.1
8'8	Short	52.000		32.1	36.4
8'8	Long	52.000		32.1	36.4
8'8	Oak Summit	52.000		32.1	36.4
8'10	Short	53.000		31.5	35.7
8'10	Long	53.000		31.5	35.7
8'10	Oak Summit	53.000		31.5	35.7
9'0	Short	54.000		31.0	35.1
9'0	Long	54.000		31.0	35.1
9'0	Oak Summit	54.000		31.0	35.1

WOOD JAMB ATTACHMENT TO STRUCTURE

2 X 6 VERTICAL JAMB ATTACHMENT TO WOOD FRAME STRUCTURE
 5/16" X 3" LAG SCREWS STARTING 6" FROM ENDS THEN 24" O.C. (1 1/2" EMBEDMENT)

2 X 6 VERTICAL JAMB ATTACHMENT TO 2,000 PSI CONCRETE
 HILTI KWIK BOLT 3/8" X 4" STARTING 6" FROM ENDS THEN 24" O.C. (2 1/2" EMBEDMENT)
 HILTI SLEEVE ANCHOR 3/8" X 2-3/4" STARTING 6" FROM ENDS THEN 24" O.C. (1 1/4" EMBEDMENT)
 ITW/RAMSET REDHEAD (TRU-BOLT) 3/8" X 4" STARTING 6" FROM ENDS THEN 24" O.C. (2 1/2" EMBEDMENT)

2 X 6 VERTICAL JAMB ATTACHMENT TO HOLLOW C-90 BLOCK
 SIMPSON 1/4" X 3" TITEN SCREWS STARTING 6" FROM ENDS, USE PAIRS OF FASTENERS (3" APART) AT 24" O.C. (1 1/2" EMBEDMENT)
 HILTI 1/4" X 2-3/4" KWIK-CON II+ SCREWS STARTING 6" FROM ENDS, USE PAIRS OF FASTENERS (3" APART) AT 24" O.C. (1 1/4" EMBEDMENT)

2 X 6 VERTICAL JAMB ATTACHMENT TO GROUTED C-90 BLOCK (2000 PSI GROUT)
 HILTI SLEEVE ANCHOR 3/8" X 2-3/4" STARTING 6" FROM ENDS THEN 24" O.C. (1 1/4" EMBEDMENT) (OR, USE FASTENERS FOR HOLLOW C-90 BLOCK)

*LAGS AND BOLTS CAN BE COUNTERSUNK TO PROVIDE A FLUSH MOUNTING SURFACE.
 *PREPARATION OF WOOD JAMBS BY OTHERS

REV	DESCRIPTIONS OF REVISIONS	DATE	BY

MAX SIZE
9' x 8'

DESIGN LOADS
+31.0 PSF
-35.1 PSF

TEST LOADS
+46.5 PSF
-52.7 PSF

Amarr

165 CARRIAGE COURT WINSTON-SALEM, N.C. 27105 WWW.AMARR.COM

MODEL #1500 STRATFORD 3000
 MODEL #1200 HERITAGE 3000
 MODEL #1550 OAK SUMMIT 3000
 SHORT, LONG, FLUSH & OAK SUMMIT PANELS

SIZE	DRAWN BY	RLR	DATE	03/01/12	DRAWING NUMBER IRC-1509-140-15
B	CHECKED BY		DATE		

SHEET 3 OF 3