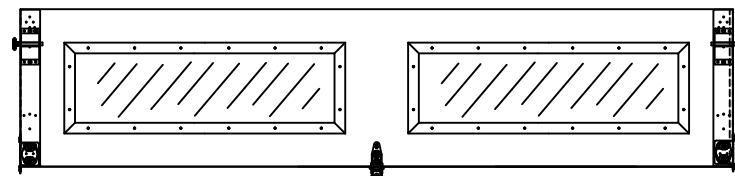
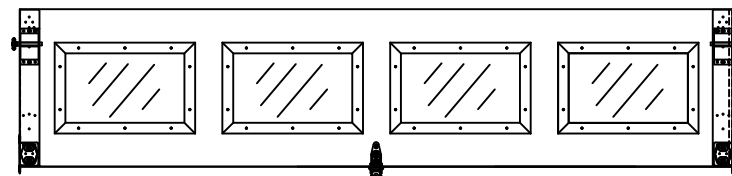


OPTIONAL SHORT AND LONG PANEL GLAZING LAYOUTS

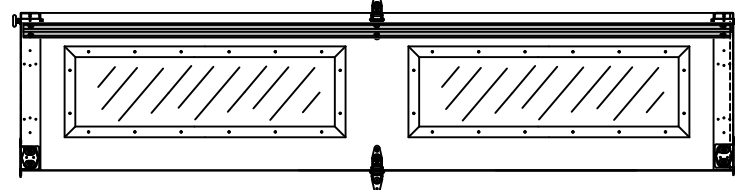
GLAZING MEETS ASTM E1300-04
STRUT LAYOUT BASED ON 7' TALL DOOR (LAYOUTS MAY VARY DEPENDING ON DOOR HEIGHT)



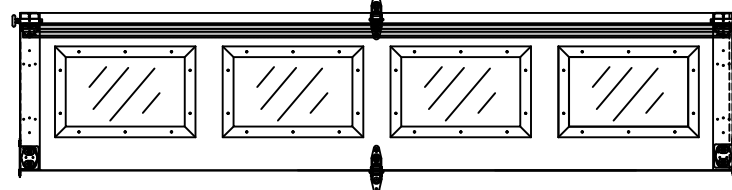
TOP SECTION



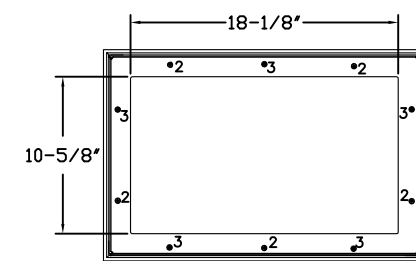
TOP SECTION



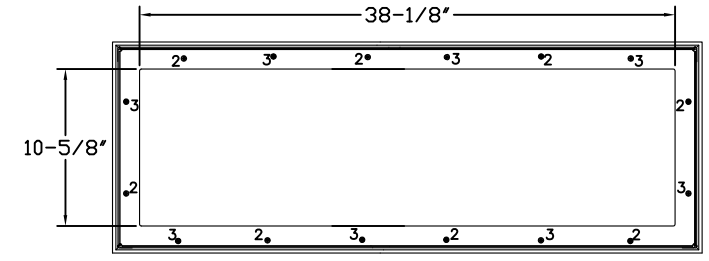
INTERMEDIATE SECTION



INTERMEDIATE SECTION



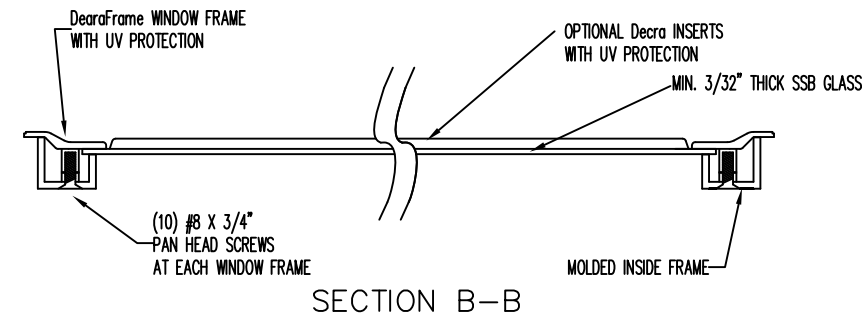
SHORT PANEL GLAZING FASTENER DETAIL
N.T.S.



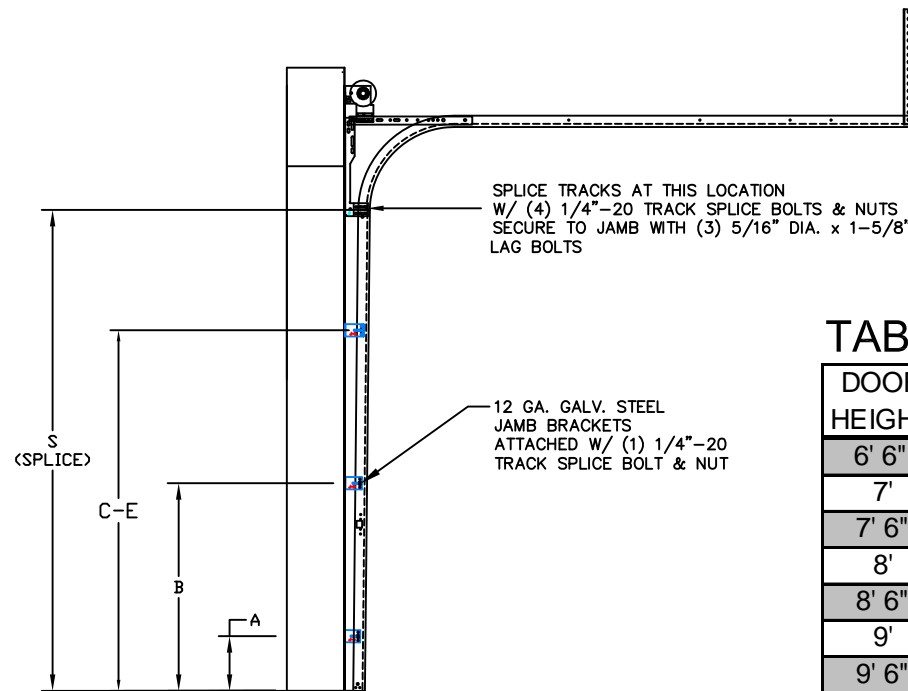
LONG PANEL GLAZING FASTENER DETAIL
N.T.S.

GLAZING OPTION CROSS SECTION

GLAZING NOT AVAILABLE IN WIND-BORNE DEBRIS REGION



SECTION B-B



TRACK CONFIGURATION FOR 6'6" UP TO 14' TALL DOORS (SEE TABLE 2)
N.T.S.

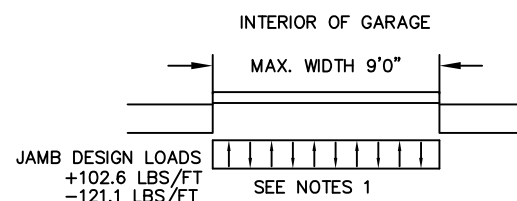


TABLE 2

DOOR HEIGHT	TRACK ATTACHMENT					SPLICE
	A	B	C	D	E	
6' 6"	10"	38"				70"
7'	10"	38"				76"
7' 6"	10"	38"				82"
8'	10"	38"				88"
8' 6"	10"	38"	66"			94"
9'	10"	38"	66"			100"
9' 6"	10"	38"	66"			106"
10'	10"	38"	66"			112"
10' 6"	10"	38"	66"	94"		118"
11'	10"	38"	66"	94"		124"
11' 6"	10"	38"	66"	94"		130"
12'	10"	38"	66"	94"		136"
12' 6"	10"	38"	66"	94"		142"
13'	10"	38"	66"	94"	122"	148"
13' 6"	10"	38"	66"	94"	122"	154"
14'	10"	38"	66"	94"	122"	160"

ALL TRACK ATTACHMENT SPACING +/-2" ALLOWED WITH SYP OR SPF NO. 2 OR BETTER ONLY

SPECIFICATIONS AND NOTES

- DOORS AND HARDWARE WILL BE DESIGNED, MANUFACTURED AND INSTALLED WITH STANDARDS AS SET FORTH BY DASMA.
- DOOR SECTIONS SHALL BE 27 GA. MIN. (.016") INTERIOR AND EXTERIOR ROLLED FORMED LIGHT COMMERCIAL QUALITY
- DOORS UP TO 7'0" HIGH CONSIST OF (4) SECTIONS AS SHOWN.
- DOORS UP TO 8'0" HIGH CONSIST OF (5) SECTIONS AS SHOWN.
- SUPPORTING STRUCTURAL ELEMENTS SHALL BE DESIGNED BY A REGISTERED PROFESSIONAL ENGINEER FOR WIND LOADS INDICATED ON THIS DRAWING IN ADDITION TO OTHER LOADINGS.

REV	DESCRIPTIONS OF REVISIONS	DATE	BY

MAX SIZE 9' x 14'

DESIGN LOADS
+22.8 PSF
-26.9 PSF

TEST LOADS
+34.2 PSF
-40.4 PSF

Amarr

165 CARRIAGE COURT WINSTON-SALEM, N.C. 27105 WWW.AMARR.COM

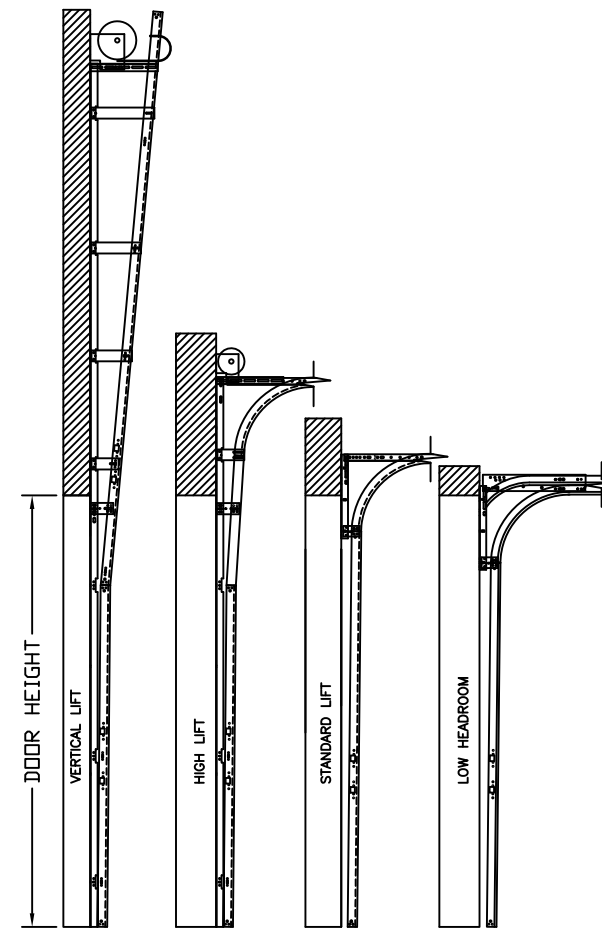
MODEL #1500 STRATFORD 3000
MODEL #1200 HERITAGE 3000
MODEL #1550 OAK SUMMIT 3000
SHORT, LONG, FLUSH & OAK SUMMIT PANELS

SIZE	DRAWN BY	RLR	DATE	07/07/12	DRAWING NUMBER
B	CHECKED BY		DATE		IRC-1509-120-15

SHEET 2 OF 3

TABLE 1

Section	Panel Type	Center Stile Location (Measured from Left Edge)		Max Design Loads Allowed	
		1st (in)	2nd (in)	Positive (PSF)	Negative (PSF)
6'0"	Short	24.406	47.594	34.2	40.3
6'0"	Oak Summit	24.644	47.357	34.2	40.3
7'0"	Short	29.200	54.800	29.3	34.5
7'0"	Oak Summit	29.144	54.857	29.3	34.5
7'2"	Short	30.200	55.800	28.6	33.7
7'2"	Oak Summit	29.894	56.107	28.6	33.7
7'4"	Short	31.200	56.800	27.9	33.0
7'4"	Oak Summit	30.644	57.357	27.9	33.0
7'6"	Short	32.200	57.800	27.3	32.2
7'6"	Long	45.000		27.3	32.2
7'6"	Oak Summit	45.000		27.3	32.2
7'8"	Short	32.200	60.000	26.7	31.5
7'8"	Long	46.000		26.7	31.5
7'8"	Oak Summit	46.000		26.7	31.5
7'10"	Short	33.000	61.000	26.1	30.9
7'10"	Long	47.000		26.1	30.9
7'10"	Oak Summit	47.000		26.1	30.9
8'0"	Short	48.000		25.6	30.2
8'0"	Long	48.000		25.6	30.2
8'0"	Oak Summit	48.000		25.6	30.2
8'2"	Short	49.000		25.1	29.6
8'2"	Long	49.000		25.1	29.6
8'2"	Oak Summit	49.000		25.1	29.6
8'4"	Short	50.000		24.6	29.0
8'4"	Long	50.000		24.6	29.0
8'4"	Oak Summit	50.000		24.6	29.0
8'6"	Short	51.000		24.1	28.4
8'6"	Long	51.000		24.1	28.4
8'6"	Oak Summit	51.000		24.1	28.4
8'8"	Short	52.000		23.6	27.9
8'8"	Long	52.000		23.6	27.9
8'8"	Oak Summit	52.000		23.6	27.9
8'10"	Short	53.000		23.2	27.4
8'10"	Long	53.000		23.2	27.4
8'10"	Oak Summit	53.000		23.2	27.4
9'0"	Short	54.000		22.8	26.9
9'0"	Long	54.000		22.8	26.9
9'0"	Oak Summit	54.000		22.8	26.9



AVAILABLE TRACK CONFIGURATIONS
N.T.S.

WOOD JAMB ATTACHMENT TO STRUCTURE

2 X 6 VERTICAL JAMB ATTACHMENT TO WOOD FRAME STRUCTURE
 5/16" X 3" LAG SCREWS STARTING 6" FROM ENDS THEN 24" O.C. (1 1/2" EMBEDMENT)

2 X 6 VERTICAL JAMB ATTACHMENT TO 2,000 PSI CONCRETE
 HILTI KWIK BOLT 3/8" X 4" STARTING 6" FROM ENDS THEN 24" O.C. (2 1/2" EMBEDMENT)
 HILTI SLEEVE ANCHOR 3/8" X 2-3/4" STARTING 6" FROM ENDS THEN 24" O.C. (1 1/4" EMBEDMENT)
 ITW/RAMSET REDHEAD (TRU-BOLT) 3/8" X 4" STARTING 6" FROM ENDS THEN 24" O.C. (2 1/2" EMBEDMENT)

2 X 6 VERTICAL JAMB ATTACHMENT TO HOLLOW C-90 BLOCK
 SIMPSON 1/4" X 3" TITEN SCREWS STARTING 6" FROM ENDS, USE PAIRS OF FASTENERS (3" APART) AT 24" O.C. (1 1/2" EMBEDMENT)
 HILTI 1/4" X 2-3/4" KWIK-CON II+ SCREWS STARTING 6" FROM ENDS, USE PAIRS OF FASTENERS (3" APART) AT 24" O.C. (1 1/4" EMBEDMENT)

2 X 6 VERTICAL JAMB ATTACHMENT TO GROUTED C-90 BLOCK (2000 PSI GROUT)
 HILTI SLEEVE ANCHOR 3/8" X 2-3/4" STARTING 6" FROM ENDS THEN 24" O.C. (1 1/4" EMBEDMENT) (OR, USE FASTENERS FOR HOLLOW C-90 BLOCK)

*LAGS AND BOLTS CAN BE COUNTERSUNK TO PROVIDE A FLUSH MOUNTING SURFACE.
 *PREPARATION OF WOOD JAMBS BY OTHERS

REV	DESCRIPTIONS OF REVISIONS	DATE	BY

MAX SIZE
9' x 14'

DESIGN LOADS
+22.8 PSF
-26.9 PSF

TEST LOADS
+34.2 PSF
-40.4 PSF

Amarr
 165 CARRIAGE COURT WINSTON-SALEM, N.C. 27105 WWW.AMARR.COM

MODEL #1500 STRATFORD 3000
MODEL #1200 HERITAGE 3000
MODEL #1550 OAK SUMMIT 3000
SHORT, LONG, FLUSH & OAK SUMMIT PANELS

SIZE	DRAWN BY	RLR	DATE	07/07/12	DRAWING NUMBER
B	CHECKED BY		DATE		IRC-1509-120-15

SHEET 3 OF 3