

THE METHOD OF TESTING WAS IN SUBSTANTIAL CONFORMANCE WITH THE PROCEDURES DESCRIBED IN DASMA 108. THE PRESSURES SHOWN ON THE DRAWINGS WERE CALCULATED USING ASCE 7-98/02/05 WITH THE FOLLOWING PARAMETERS (5 FEET OF DOOR WIDTH IN END ZONE, ROOF AT ANY SLOPE, AND I=1.0):

WIND SPEED (MPH)	130	118	112	107	103
EXPOSURE LEVEL	B	C	C	D	D
MEAN ROOF HEIGHT	30'	15'	25'	15'	25'

REV	DESCRIPTION OF REVISIONS	DATE	BY

MAX SIZE 9'2" x 14'
 DESIGN LOADS +26.4 PSF -31.1 PSF
 TEST LOADS +39.6 PSF -46.7 PSF

Thomas L. Shelmerdine, PE (TX PE #85829) Structural Solutions, PA (TX Firm #F-004063)

STATE OF TEXAS
 THOMAS L. SHELMERDINE
 85829
 LICENSED PROFESSIONAL ENGINEER
 TX

5921-G W. Friendly Ave., Greensboro, NC 27410

ENTRE//MATIC
 165 CARRIAGE COURT WINSTON-SALEM, N.C. 27105

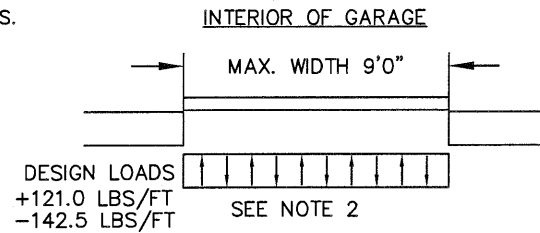
MODEL #1480 CARRIAGE COURT

SIZE	DRAWN BY RLR	DATE 11/25/14	DRAWING NUMBER
B	CHECKED BY RLR	DATE 11/25/14	IRC-1409-130-15

SHEET 1 OF 3

SPECIFICATIONS AND NOTES

1. ALL THE LOAD FROM THE DOOR IS TRANSFERRED TO THE VERTICAL TRACK, FROM THE TRACK THE LOAD IS TRANSFERRED TO THE VERTICAL JAMBS. THE HORIZONTAL JAMB OR HEADER RECEIVES NO PORTION OF THE LOAD TRANSFERRED FROM THE DOOR.
2. EACH VERTICAL JAMBS RECEIVES MAXIMUM DESIGN LOADS OF: +121.0 LBS/FT & -142.5 LBS/FT
3. DOOR AND HARDWARE WILL BE DESIGNED, MANUFACTURED AND INSTALLED WITH STANDARDS AS SET FORTH BY DASMA.
4. DOOR SECTIONS SHALL BE 27 GA. (.015) MIN. EXTERIOR SKIN ROLLED FORMED, W/ BAKED ON POLYESTER FINISH
5. DOORS UP TO 14'0" HIGH HAVE ALTERNATE BETWEEN (1) 3" 20GA STRUT AND (1) 2" 20 GA STRUT PER SECTION STARTING WITH A 3" ON THE BOTTOM SECTION
6. SUPPORTING STRUCTURAL ELEMENTS SHALL BE DESIGNED BY A REGISTERED PROFESSIONAL ENGINEER FOR WIND LOADS INDICATED ON THIS DRAWING IN ADDITION TO OTHER LOADINGS.



WOOD JAMB ATTACHMENT TO STRUCTURE (OPTIONAL)

2 X 6 VERTICAL JAMB ATTACHMENT TO WOOD FRAME STRUCTURE

5/16" X 3" LAG SCREWS STARTING 6" FROM ENDS THEN 24" O.C. (1 1/2" EMBEDMENT)

2 X 6 VERTICAL JAMB ATTACHMENT TO 2,000 PSI CONCRETE

HILTI KWIK BOLT 3/8" X 4" STARTING 6" FROM ENDS THEN 24" O.C. (2 1/2" EMBEDMENT)
HILTI SLEEVE ANCHOR 3/8" X 2-3/4" STARTING 6" FROM ENDS THEN 24" O.C. (1 1/4" EMBEDMENT)

ITW/RAMSET REDHEAD (TRU-BOLT) 3/8" X 4" STARTING 6" FROM ENDS THEN 24" O.C. (2 1/2" EMBEDMENT)

2 X 6 VERTICAL JAMB ATTACHMENT TO HOLLOW C-90 BLOCK

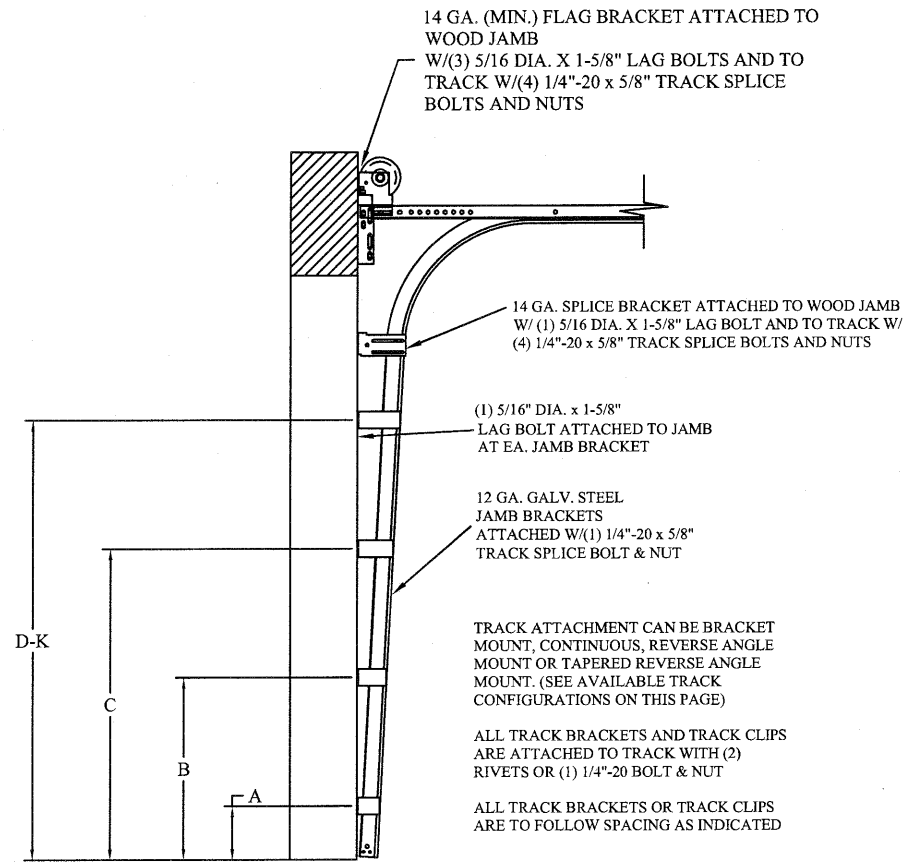
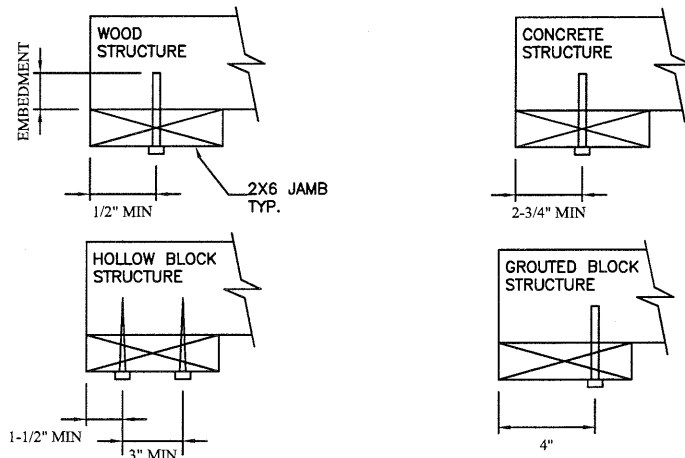
SIMPSON 1/4" X 3" TITEN SCREWS STARTING 6" FROM ENDS, USE PAIRS OF FASTENERS (3" APART) AT 24" O.C. (1 1/2" EMBEDMENT)

HILTI 1/4" X 2-3/4" KWIK-CON II+ SCREWS STARTING 6" FROM ENDS, USE PAIRS OF FASTENERS (3" APART) AT 24" O.C. (1 1/4" EMBEDMENT)

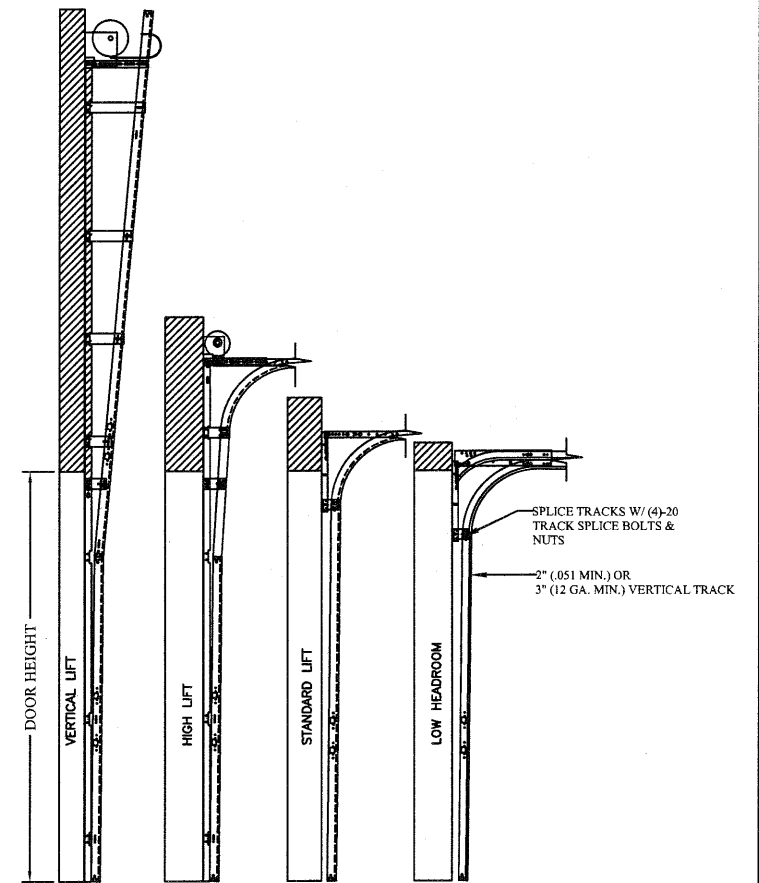
2 X 6 VERTICAL JAMB ATTACHMENT TO GROUTED C-90 BLOCK (2000 PSI GROUT)

HILTI SLEEVE ANCHOR 3/8" X 2-3/4" STARTING 6" FROM ENDS THEN 24" O.C. (1 1/4" EMBEDMENT)
(OR, USE FASTENERS FOR HOLLOW C-90 BLOCK)

*LAGS AND BOLTS CAN BE COUNTERSUNK TO PROVIDE A FLUSH MOUNTING SURFACE.
*PREPARATION OF WOOD JAMBS BY OTHERS



TRACK CONFIGURATION FOR UP TO 14' TALL DOORS
SEE TABLE 1



AVAILABLE TRACK CONFIGURATIONS
N.T.S.

TABLE 1

DOOR HEIGHT	TRACK ATTACHMENT											TYPICAL SPLICE
	A	B	C	D	E	F	G	H	I	J	K	
7' 0"	10.0"	34"	58"									76"
7' 6"	10.0"	34"	58"									82"
8' 0"	10.0"	34"	58"									88"
9' 0"	10.0"	34"	58"	82"								100"
9' 6"	10.0"	34"	58"	82"								106"
10' 0"	10.0"	34"	58"	82"								112"
11' 0"	10.0"	34"	58"	82"	106"							124"
12' 0"	10.0"	34"	58"	82"	106"							136"
13' 0"	10.0"	34"	58"	82"	106"	130"						148"
14' 0"	10.0"	34"	58"	82"	106"	130"						160"

ALL TRACK ATTACHMENTS +/- 2" ALLOWED USING SYP OR SPF NO.2 OR BETTER ONLY

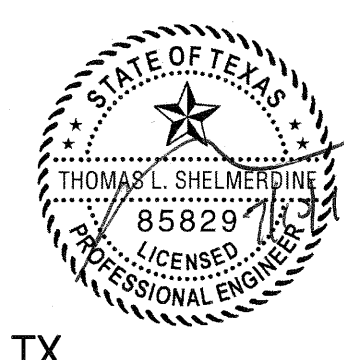
REV	DESCRIPTION OF REVISIONS	DATE	BY

MAX SIZE
9'2" x 14'

DESIGN LOADS
+26.4 PSF
-31.1 PSF

TEST LOADS
+39.6 PSF
-46.7 PSF

Thomas L. Shelmerdine, PE (TX PE #85829)
Structural Solutions, PA (TX Firm #F-004063)



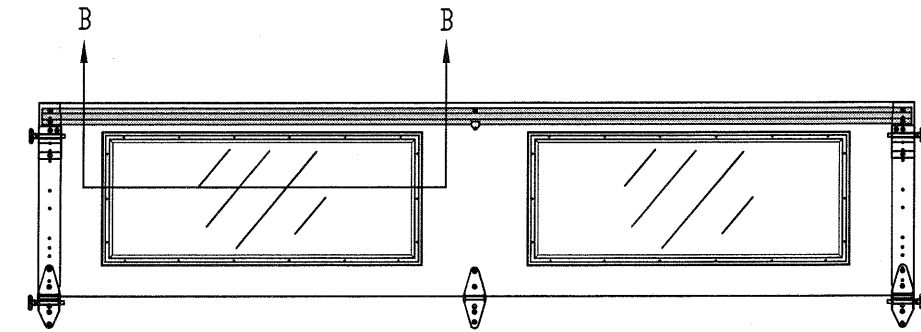
5921-G W. Friendly Ave., Greensboro, NC 27410

ENTRE//MATIC

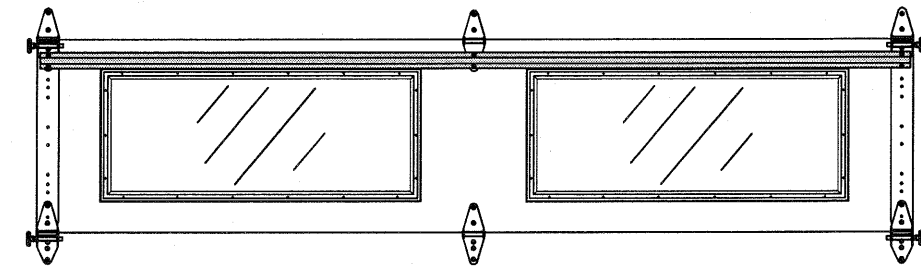
165 CARRIAGE COURT WINSTON-SALEM, N.C. 27105

MODEL #1480 CARRIAGE COURT

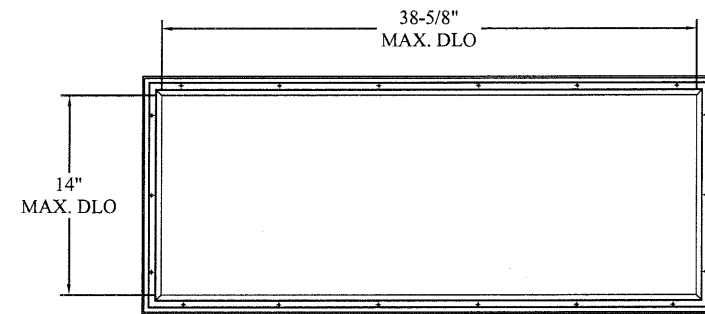
SIZE	DRAWN BY	RLR	DATE	11/25/14	DRAWING NUMBER
B	CHECKED BY	RLR	DATE	11/25/14	IRC-1409-130-15



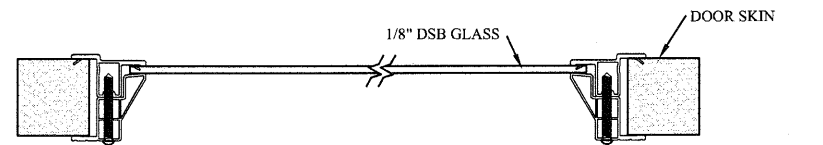
OPTIONAL GLAZED TOP SECTION W/ LONG PANEL 1480 (Carriage Court) WINDOWS AND STRUT LAYOUT
N.T.S.



OPTIONAL GLAZED INTERMEDIATE SECTION W/ LONG PANEL 1480 (Carriage Court) WINDOWS AND STRUT LAYOUT
N.T.S.



LONG PANEL 1480 (Carriage Court) GLAZING FASTENER DETAIL
N.T.S.



SECTION B-B LONG PANEL 1480 (Carriage Court) WINDOW DETAIL
N.T.S. (GLAZING MEETS ASTM E1300-04)

TABLE 2

Section Width (ft)	Center Stile 1st (in)	Max Design Loads Allowed	
		Positive (PSF)	Negative (PSF)
6' 0"	36"	40.3	47.5
6' 2"	37"	39.2	46.2
6' 4"	38"	38.2	45.0
6' 6"	39"	37.2	43.8
6' 8"	40"	36.3	42.7
6' 10"	41"	35.4	41.7
7' 0"	42"	34.5	40.7
7' 2"	43"	33.7	39.7
7' 4"	44"	33.0	38.8
7' 6"	45"	32.2	38.0
7' 8"	46"	31.5	37.1
7' 10"	47"	30.8	36.3
8' 0"	48"	30.2	35.6
8' 2"	49"	29.6	34.9
8' 4"	50"	29.0	34.2
8' 6"	51"	28.4	33.5
8' 8"	52"	27.9	32.8
8' 10"	53"	27.3	32.2
9' 0"	54"	26.8	31.6
9' 2"	55"	26.4	31.1

REV	DESCRIPTION OF REVISIONS	DATE	BY

MAX SIZE
9'2" x 14'

DESIGN LOADS
+26.4 PSF
-31.1 PSF

TEST LOADS
+39.6 PSF
-46.7 PSF

THOMAS L. SHELMERDINE
85829
LICENSED PROFESSIONAL ENGINEER
TX

Thomas L. Shelmerdine, PE (TX PE #85829)
Structural Solutions, PA (TX Firm #F-004063)

5921-G W. Friendly Ave., Greensboro, NC 27410

ENTRE//MATIC

165 CARRIAGE COURT WINSTON-SALEM, N.C. 27105

MODEL #1480 CARRIAGE COURT

SIZE	DRAWN BY	RLR	DATE	11/25/14	DRAWING NUMBER
B	CHECKED BY	RLR	DATE	11/25/14	IRC-1409-130-15
					SHEET 3 OF 3