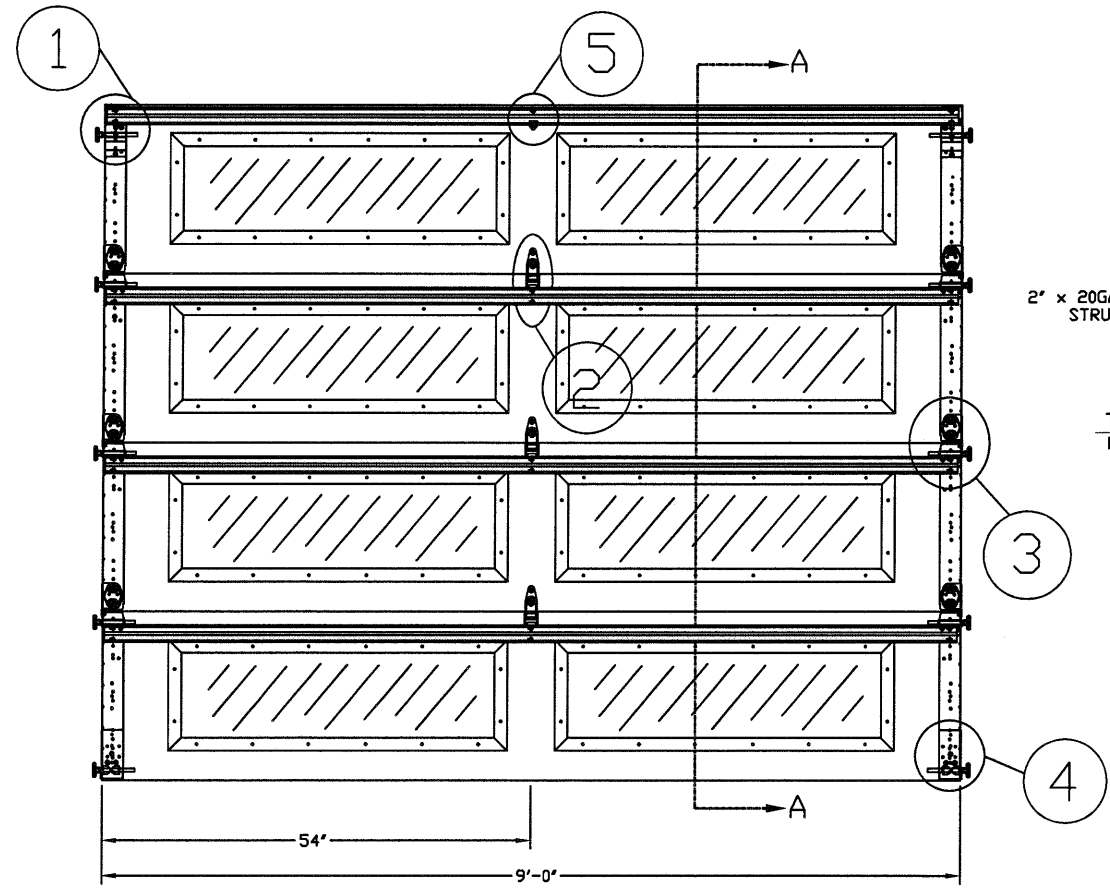


TYPICAL TOP FIXTURES  
N.T.S.

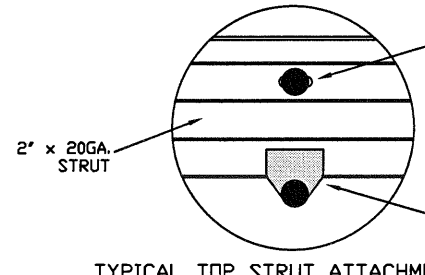
TYPICAL DURASAFE CENTER HINGE  
N.T.S.

TYPICAL DURASAFE END HINGE  
N.T.S.

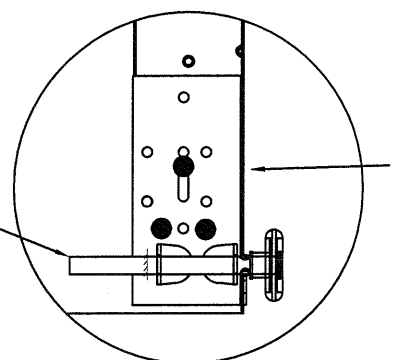
SECTION A-A (SIDE VIEW)  
N.T.S.



INSIDE ELEVATION  
N.T.S.



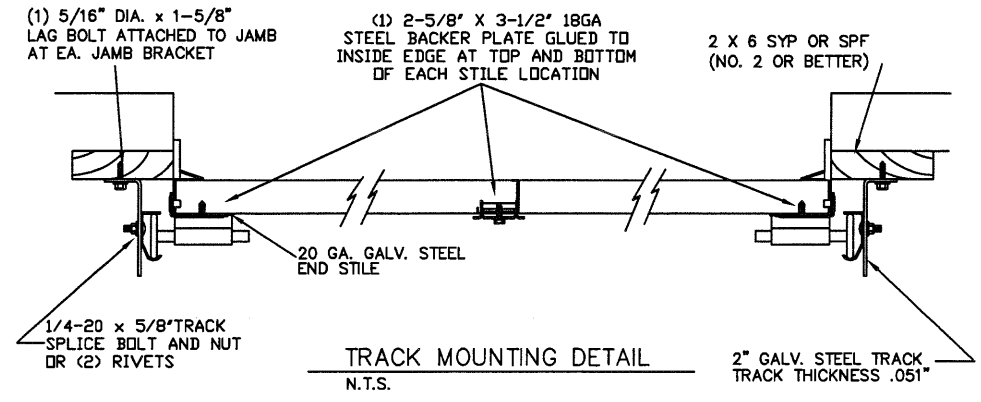
TYPICAL TOP STRUT ATTACHMENT  
N.T.S.



TYPICAL BOTTOM BRACKET  
N.T.S.

SPECIFICATIONS AND NOTES

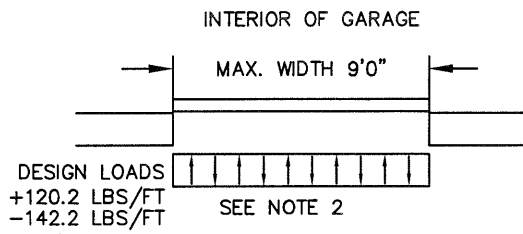
- ALL THE LOAD FROM THE DOOR IS TRANSFERRED TO THE VERTICAL TRACK, FROM THE TRACK THE LOAD IS TRANSFERRED TO THE VERTICAL JAMBS. THE HORIZONTAL JAMB OR HEADER RECEIVES NO PORTION OF THE LOAD
- EACH VERTICAL JAMBS RECEIVES MAXIMUM DESIGN LOADS OF: +120.2 LBS/FT & -142.2 LBS/FT
- DOOR AND HARDWARE WILL BE DESIGNED, MANUFACTURED AND INSTALLED WITH STANDARDS AS SET FORTH BY DASMA.
- DOOR SECTIONS SHALL BE 24 GA. (.0216) MIN. EXTERIOR SKIN ROLLED FORMED, W/ BAKED ON POLYESTER FINISH
- DOORS OVER (4) SECTIONS REFER TO TABLES 1 AND 2
- SUPPORTING STRUCTURAL ELEMENTS SHALL BE DESIGNED BY A REGISTERED PROFESSIONAL ENGINEER FOR WIND LOADS



TRACK MOUNTING DETAIL  
N.T.S.

THE METHOD OF TESTING WAS IN SUBSTANTIAL CONFORMANCE WITH THE PROCEDURE DESCRIBED IN DASMA 108 & 115, ASTM E330, E1886, E1996, & F588. THE PRESSURES SHOWN ON THE DRAWINGS WERE CALCULATED USING ASCE 7-98/02/05 WITH THE FOLLOWING PARAMETERS (5 FEET OF DOOR WIDTH IN THE END ZONE, ROOF AT ANY SLOPE I=1.0):

WIND SPEED (MPH)	130	118	112	107	103
EXPOSURE LEVEL	B	C	C	D	D
MEAN ROOF HEIGHT	30'	15'	25'	15'	25'



REV	DESCRIPTION OF REVISIONS	DATE	BY

MAX SIZE  
9' WIDTH  
14' HEIGHT

DESIGN LOADS  
+26.7 PSF  
-31.6 PSF

TEST LOADS  
(1.5 x DESIGN LOADS)  
+40.1 PSF  
-47.4 PSF

Thomas L. Shelmerdine, PE (TX PE #85829)  
Structural Solutions, PA (TX Firm #004063)

STATE OF TEXAS  
THOMAS L. SHELMERDINE  
85829  
LICENSED PROFESSIONAL ENGINEER  
TX

5921-G W. Friendly Ave., Greensboro, NC 27410

**Amarr**  
ENTREMATICS

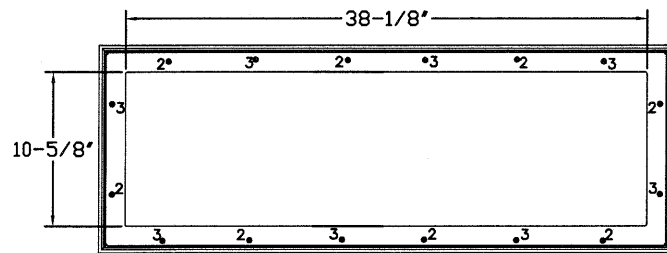
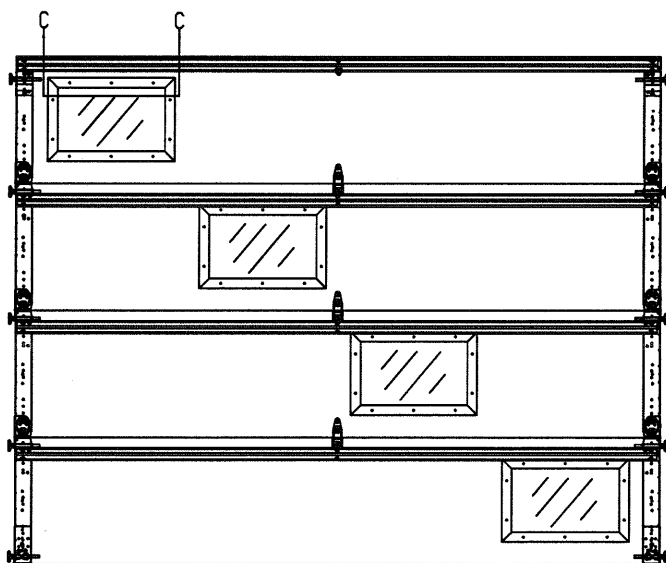
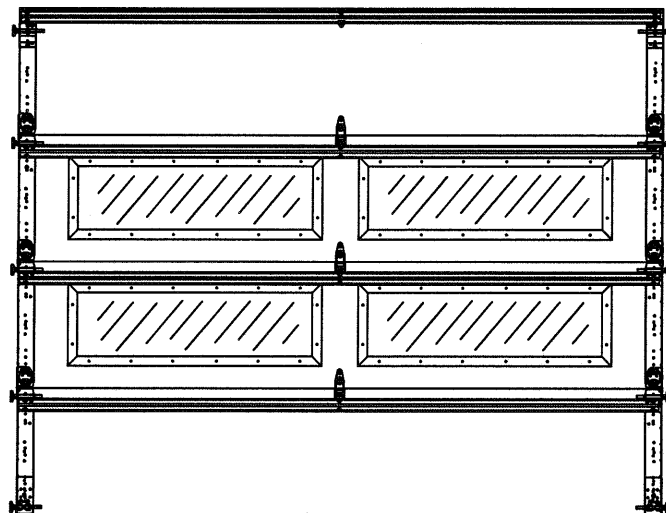
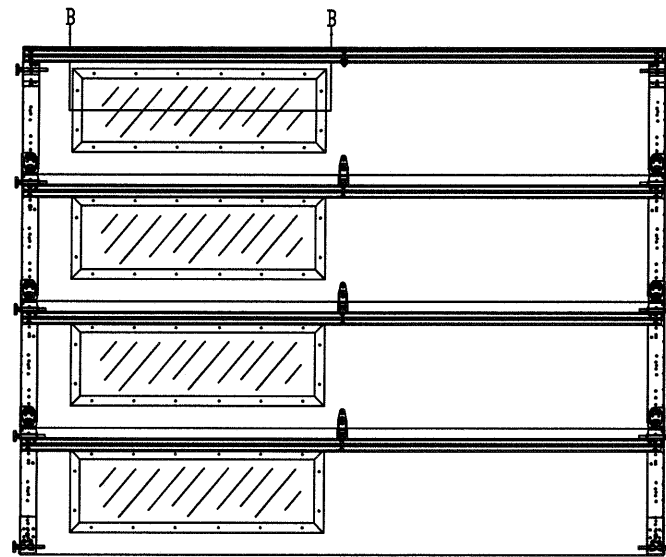
MODEL #1200 AMARR HERITAGE 3000  
MODEL #1200 AMARR OAK SUMMIT 3000  
SHORT, LONG, FLUSH & OAK SUMMIT PANELS

SIZE	DRAWN BY	RLR	DATE	01/31/18	DRAWING NUMBER
B	CHECKED BY	RLR	DATE	01/31/18	IRC-1209-130-11-M

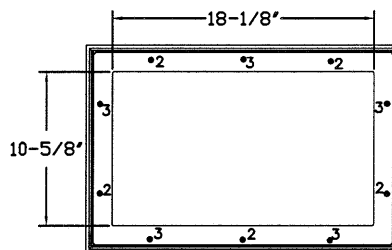
ENTREMATICS  
165 CARRIAGE COURT WINSTON-SALEM, N.C. 27105

SHEET 1 OF 3

**EXAMPLES OF OPTIONAL SHORT AND LONG PANEL GLAZING LAYOUTS**  
 GLAZING AVAILABLE IN ANY COMBINATION  
 GLAZING MEETS ASTM E1300-04



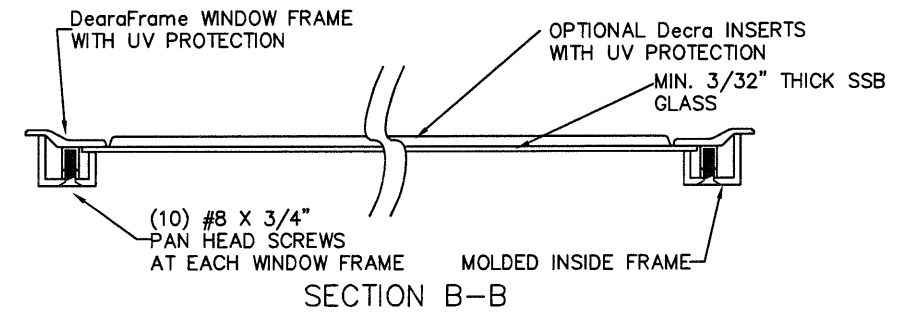
LONG PANEL GLAZING FASTENER DETAIL  
N.T.S.



SHORT PANEL GLAZING FASTENER DETAIL  
N.T.S.

**GLAZING OPTION CROSS SECTION**

GLAZING NOT AVAILABLE IN WIND-BORNE DEBRIS REGION

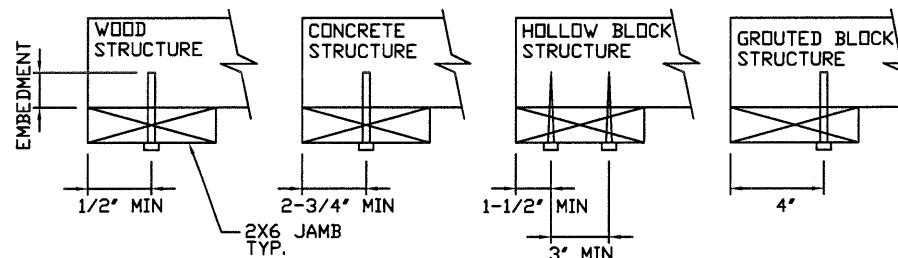


**WOOD JAMB ATTACHMENT TO STRUCTURE**

**2 X 6 VERTICAL JAMB ATTACHMENT TO WOOD FRAME STRUCTURE**  
 5/16" X 3" LAG SCREWS STARTING 6" FROM ENDS THEN 24" O.C. (1 1/2" EMBEDMENT)  
**2 X 6 VERTICAL JAMB ATTACHMENT TO 2,000 PSI CONCRETE**  
 HILTI KWIK BOLT 3/8" X 4" STARTING 6" FROM ENDS THEN 24" O.C. (2 1/2" EMBEDMENT)  
 HILTI SLEEVE ANCHOR 3/8" X 2-3/4" STARTING 6" FROM ENDS THEN 24" O.C. (1 1/4" EMBEDMENT)  
 ITW/RAMSET REDHEAD (TRU-BOLT) 3/8" X 4" STARTING 6" FROM ENDS THEN 24" O.C. (2 1/2" EMBEDMENT)  
**2 X 6 VERTICAL JAMB ATTACHMENT TO HOLLOW C-90 BLOCK**  
 SIMPSON 1/4" X 3" TITEN SCREWS STARTING 6" FROM ENDS, USE PAIRS OF FASTENERS (3" APART) AT 24" O.C. (1 1/2" EMBEDMENT)  
 HILTI 1/4" X 2-3/4" KWIK-CON II+ SCREWS STARTING 6" FROM ENDS, USE PAIRS OF FASTENERS (3" APART) AT 24" O.C. (1 1/4" EMBEDMENT)

**2 X 6 VERTICAL JAMB ATTACHMENT TO GROUTED C-90 BLOCK (2000 PSI GROUT)**  
 HILTI SLEEVE ANCHOR 3/8" X 2-3/4" STARTING 6" FROM ENDS THEN 24" O.C. (1 1/4" EMBEDMENT) (OR, USE FASTENERS FOR HOLLOW C-90 BLOCK)

\*LAGS AND BOLTS CAN BE COUNTERSUNK TO PROVIDE A FLUSH MOUNTING SURFACE.  
 \*PREPARATION OF WOOD JAMBS BY OTHERS



REV	DESCRIPTION OF REVISIONS	DATE	BY

MAX SIZE  
9' WIDTH  
14' HEIGHT

DESIGN LOADS  
+26.7 PSF  
-31.6 PSF

TEST LOADS  
(1.5 x DESIGN LOADS)  
+40.1 PSF  
-47.4 PSF

Thomas L. Shelmerdine, PE (TX PE #85829)  
 Structural Solutions, PA (TX Firm #F-004063)

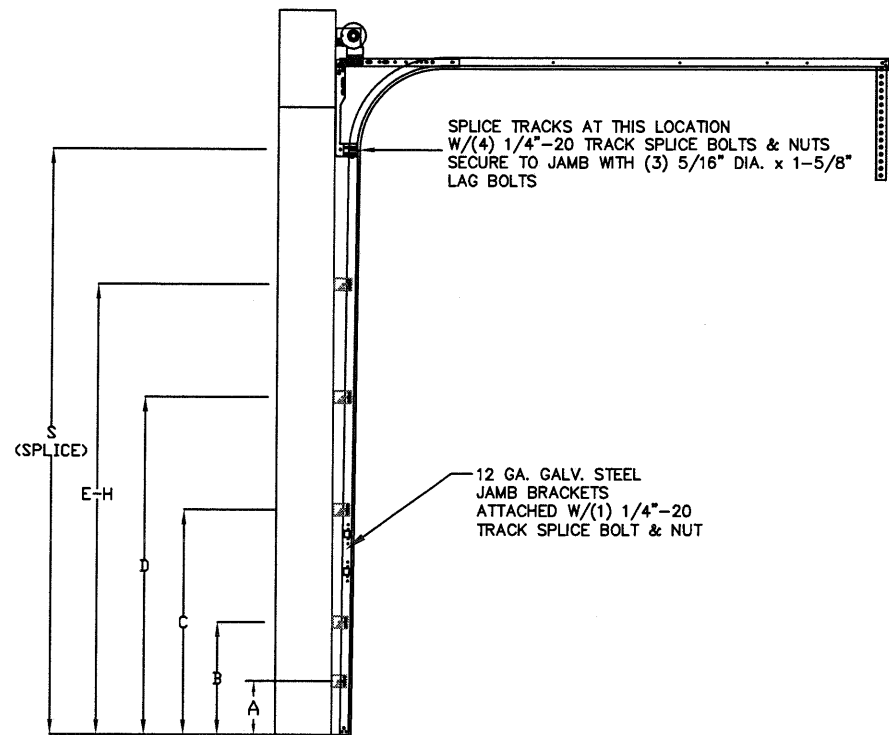
TX

5921-G W. Friendly Ave., Greensboro, NC 27410

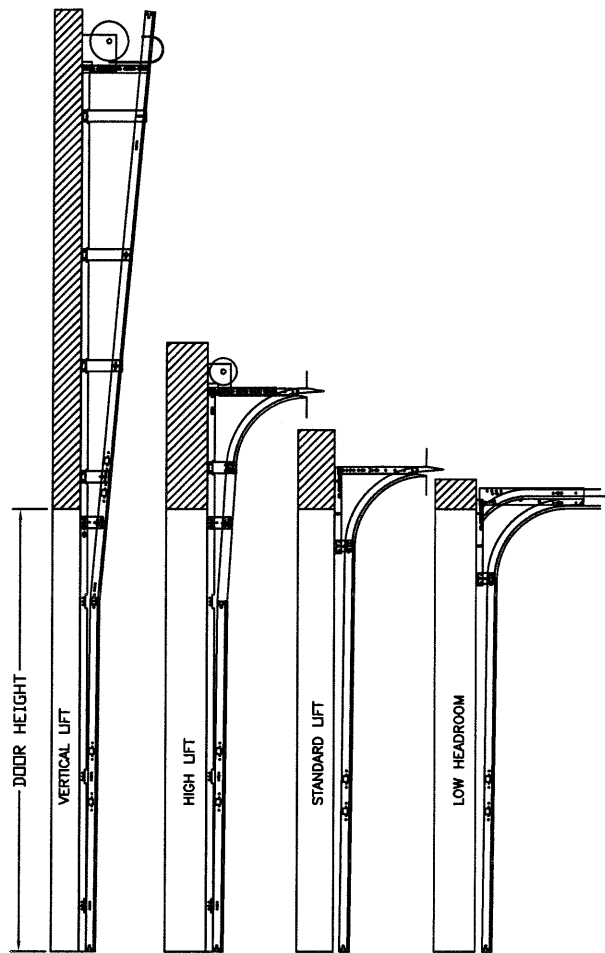
**Amarr**  
 ENTREMATIC

MODEL #1200 AMARR HERITAGE 3000  
 MODEL #1200 AMARR OAK SUMMIT 3000  
 SHORT, LONG, FLUSH & OAK SUMMIT PANELS

SIZE	DRAWN BY	RLR	DATE	01/31/18	DRAWING NUMBER
B	CHECKED BY	RLR	DATE	01/31/18	IRC-1209-130-11-M
ENTREMATIC 165 CARRIAGE COURT WINSTON-SALEM, N.C. 27105					SHEET 2 OF 3



TRACK CONFIGURATION FOR 6'6" UP TO 14' TALL DOORS (SEE TABLE 1)  
N.T.S.



AVAILABLE TRACK CONFIGURATIONS  
N.T.S.

TABLE 1

DOOR HEIGHT	TRACK ATTACHMENT						SPLICE
	A	B	C	D	E	F	
6' 6"	10"	38"	58"				70"
7'	10"	38"	58"				76"
7' 6"	10"	38"	58"				82"
8'	10"	38"	58"				88"
8' 6"	10"	38"	58"	82"			82"
9'	10"	38"	58"	82"			100"
9' 6"	10"	38"	58"	82"			106"
10'	10"	38"	58"	82"			112"
10' 6"	10"	38"	58"	82"	106"		118"
11'	10"	38"	58"	82"	106"		124"
11' 6"	10"	38"	58"	82"	106"		130"
12'	10"	38"	58"	82"	106"		136"
12' 6"	10"	38"	58"	82"	106"	130"	142"
13'	10"	38"	58"	82"	106"	130"	148"
13' 6"	10"	38"	58"	82"	106"	130"	154"
14'	10"	38"	58"	82"	106"	130"	160"

ALL TRACK ATTACHMENT SPACING +/-2" ALLOWED WITH SYP OR SPF NO. 2 OR BETTER ONLY

TABLE 2

DOOR HEIGHT	SECTION HEIGHTS							
	Btm	#2	#3	#4	#5	#6	#7	#8
14' 0"	21"	21"	21"	21"	21"	21"	21"	21"
13' 6"	21"	21"	21"	21"	21"	18"	18"	21"
13' 0"	21"	21"	21"	18"	18"	18"	18"	21"
12' 6"	21"	18"	18"	18"	18"	18"	18"	21"
12' 0"	21"	21"	21"	21"	21"	18"	21"	
11' 6"	21"	21"	21"	18"	18"	18"	21"	
11' 0"	21"	18"	18"	18"	18"	18"	21"	
10' 6"	21"	21"	21"	21"	21"	21"		
10' 0"	21"	21"	21"	18"	18"	21"		
9' 6"	21"	18"	18"	18"	18"	21"		
9' 0"	18"	18"	18"	18"	18"	18"		
8' 6"	21"	21"	21"	18"	21"			
8' 0"	21"	18"	18"	18"	21"			
7' 6"	18"	18"	18"	18"	18"			
7' 0"	21"	21"	21"	21"				
6' 6"	21"	18"	18"	21"				

TABLE 3

Section Width (ft)	Panel Type	Center Stile Location (Measured from Left Edge)	Max Design Loads Allowed	
			Positive (PSF)	Negative (PSF)
8' 0"	Short	48.000	30.0	35.5
8' 0"	Long	48.000	30.0	35.5
8' 2"	Short	49.000	29.4	34.8
8' 2"	Long	49.000	29.4	34.8
8' 4"	Short	50.000	28.8	34.1
8' 4"	Long	50.000	28.8	34.1
8' 6"	Short	51.000	28.2	33.4
8' 6"	Long	51.000	28.2	33.4
8' 8"	Short	52.000	27.7	32.8
8' 8"	Long	52.000	27.7	32.8
8' 10"	Short	53.000	27.2	32.1
8' 10"	Long	53.000	27.2	32.1
9' 0"	Short	54.000	26.7	31.6
9' 0"	Long	54.000	26.7	31.6

REV	DESCRIPTION OF REVISIONS	DATE	BY

MAX SIZE  
9' WIDTH  
14' HEIGHT

DESIGN LOADS  
+26.7 PSF  
-31.6 PSF

TEST LOADS  
(1.5 x DESIGN LOADS)  
+40.1 PSF  
-47.4 PSF

TX

Thomas L. Shelmerdine, PE (TX PE #85829)  
Structural Solutions, PA (TX Firm #F-004063)

5921-G.W. Friendly Ave., Greensboro, NC 27410

MODEL #1200 AMARR HERITAGE 3000  
MODEL #1200 AMARR OAK SUMMIT 3000  
SHORT, LONG, FLUSH & OAK SUMMIT PANELS

SIZE	DRAWN BY	RLR	DATE	01/31/18	DRAWING NUMBER
B	CHECKED BY	RLR	DATE	01/31/18	IRC-1209-130-11-M
ENTREMATIC 165 CARRIAGE COURT WINSTON-SALEM, N.C. 27105					SHEET 3 OF 3