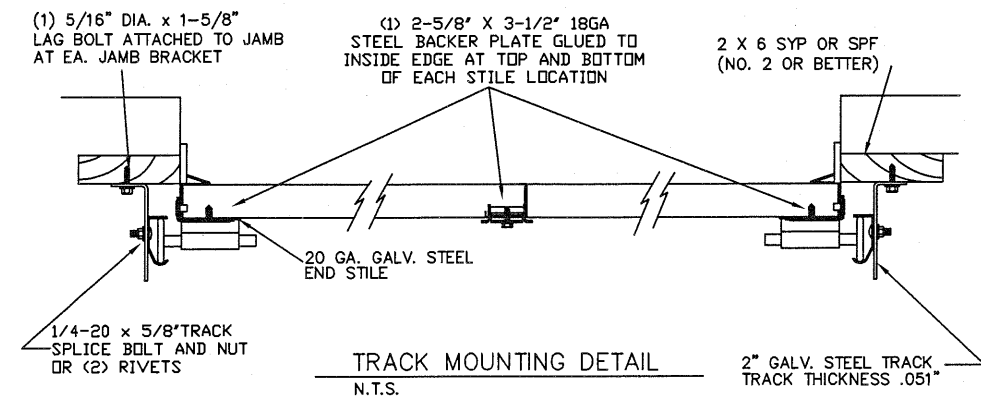
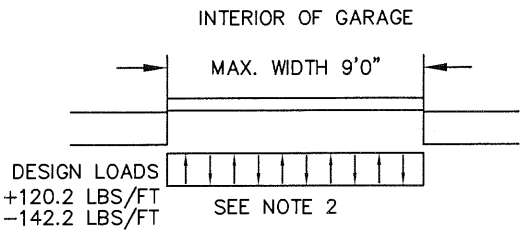


SPECIFICATIONS AND NOTES

- ALL THE LOAD FROM THE DOOR IS TRANSFERRED TO THE VERTICAL TRACK, FROM THE TRACK THE LOAD IS TRANSFERRED TO THE VERTICAL JAMBS. THE HORIZONTAL JAMB OR HEADER RECEIVES NO PORTION OF THE LOAD
- EACH VERTICAL JAMBS RECEIVES MAXIMUM DESIGN LOADS OF: +120.2 LBS/FT & -142.2 LBS/FT
- DOOR AND HARDWARE WILL BE DESIGNED, MANUFACTURED AND INSTALLED WITH STANDARDS AS SET FORTH BY DASMA.
- DOOR SECTIONS SHALL BE 24 GA. (.0216) MIN. EXTERIOR SKIN ROLLED FORMED, W/ BAKED ON POLYESTER FINISH
- DOORS OVER (4) SECTIONS REFER TO TABLES 1 AND 2
- SUPPORTING STRUCTURAL ELEMENTS SHALL BE DESIGNED BY A REGISTERED PROFESSIONAL ENGINEER FOR WIND LOADS

THE METHOD OF TESTING WAS IN SUBSTANTIAL CONFORMANCE WITH THE PROCEDURE DESCRIBED IN DASMA 108 & 115, ASTM E330, E1886, E1996, & F588. THE PRESSURES SHOWN ON THE DRAWINGS WERE CALCULATED USING ASCE 7-98/02/05 WITH THE FOLLOWING PARAMETERS (5 FEET OF DOOR WIDTH IN THE END ZONE, ROOF AT ANY SLOPE I=1.0):

WIND SPEED (MPH)	130	118	112	107	103
EXPOSURE LEVEL	B	C	C	D	D
MEAN ROOF HEIGHT	30'	15'	25'	15'	25'



REV	DESCRIPTION OF REVISIONS	DATE	BY

MAX SIZE 9' WIDTH 14' HEIGHT
DESIGN LOADS +26.7 PSF -31.6 PSF
TEST LOADS (1.5 x DESIGN LOADS) +40.1 PSF -47.4 PSF

Thomas L. Shelmerdine, PE (TX PE #85829) Structural Solutions, PA (TX Firm #F-004063)

STATE OF TEXAS
THOMAS L. SHELMERDINE
85829
LICENSED PROFESSIONAL ENGINEER
TX

5921-G W. Friendly Ave., Greensboro, NC 27410

Amarr
ENTRE/MATIC
165 CARRIAGE COURT WINSTON-SALEM, N.C. 27105

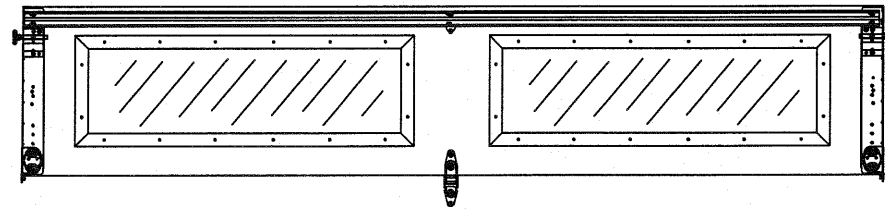
MODEL #1200 HERITAGE 3000
MODEL #1200 OAK SUMMIT 3000
SHORT, LONG, FLUSH & OAK SUMMIT PANELS

SIZE	DRAWN BY	RLR	DATE	07/28/14	DRAWING NUMBER
B	CHECKED BY		DATE		IRC-1209-130-11

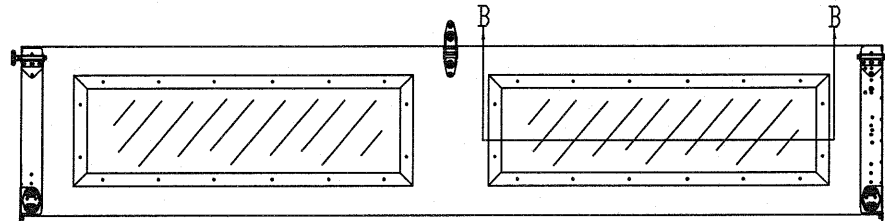
SHEET 1 OF 3

OPTIONAL SHORT AND LONG PANEL GLAZING LAYOUTS
GLAZING MEETS ASTM E1300-04

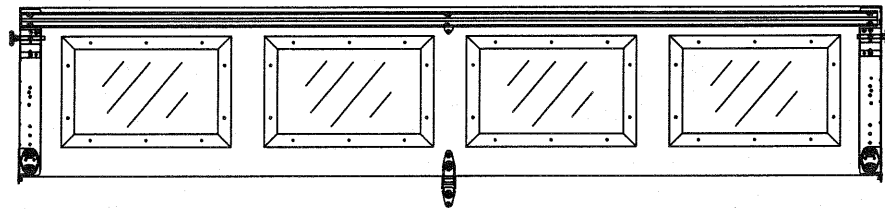
TOP SECTION



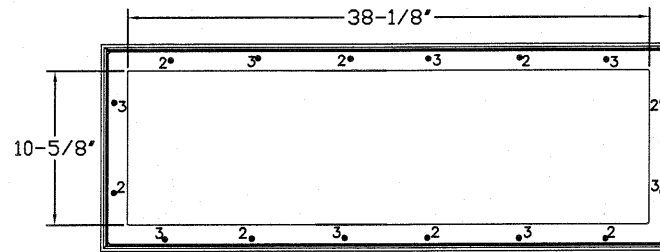
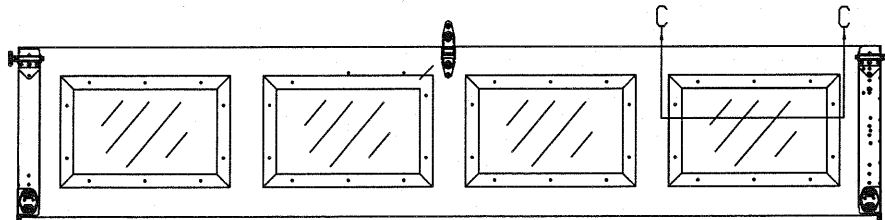
INTERMEDIATE SECTION



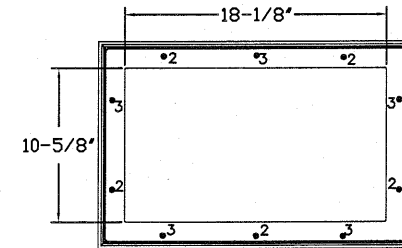
TOP SECTION



INTERMEDIATE SECTION



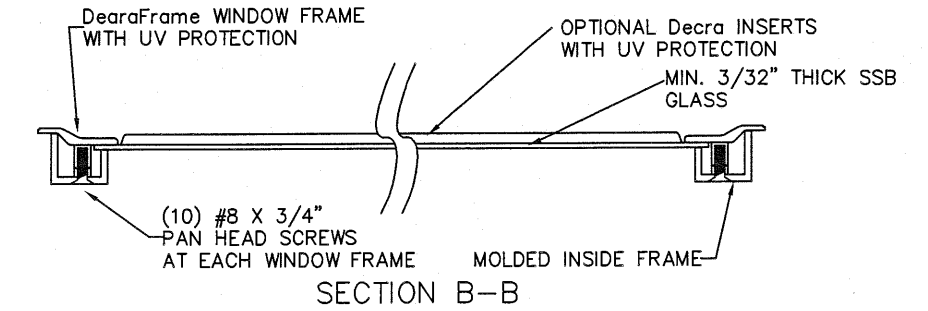
LONG PANEL GLAZING FASTENER DETAIL
N.T.S.



SHORT PANEL GLAZING FASTENER DETAIL
N.T.S.

GLAZING OPTION CROSS SECTION

GLAZING NOT AVAILABLE IN WIND-BORNE DEBRIS REGION



WOOD JAMB ATTACHMENT TO STRUCTURE

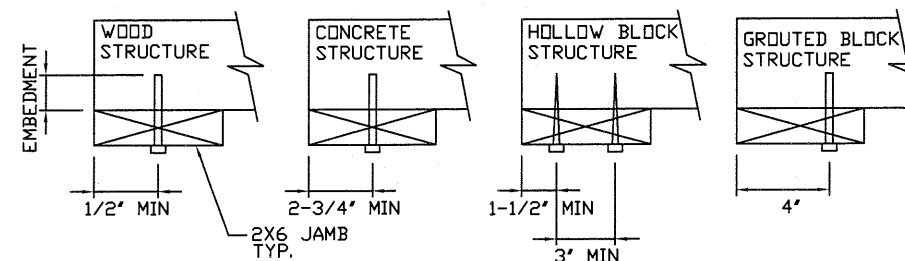
2 X 6 VERTICAL JAMB ATTACHMENT TO WOOD FRAME STRUCTURE
5/16" X 3" LAG SCREWS STARTING 6" FROM ENDS THEN 24" O.C. (1 1/2" EMBEDMENT)

2 X 6 VERTICAL JAMB ATTACHMENT TO 2,000 PSI CONCRETE
HILTI KWIK BOLT 3/8" X 4" STARTING 6" FROM ENDS THEN 24" O.C. (2 1/2" EMBEDMENT)
HILTI SLEEVE ANCHOR 3/8" X 2-3/4" STARTING 6" FROM ENDS THEN 24" O.C. (1 1/4" EMBEDMENT)
ITW/RAMSET REDHEAD (TRU-BOLT) 3/8" X 4" STARTING 6" FROM ENDS THEN 24" O.C. (2 1/2" EMBEDMENT)

2 X 6 VERTICAL JAMB ATTACHMENT TO HOLLOW C-90 BLOCK
SIMPSON 1/4" X 3" TITEN SCREWS STARTING 6" FROM ENDS, USE PAIRS OF FASTENERS (3" APART) AT 24" O.C. (1 1/2" EMBEDMENT)
HILTI 1/4" X 2-3/4" KWIK-CON II+ SCREWS STARTING 6" FROM ENDS, USE PAIRS OF FASTENERS (3" APART) AT 24" O.C. (1 1/4" EMBEDMENT)

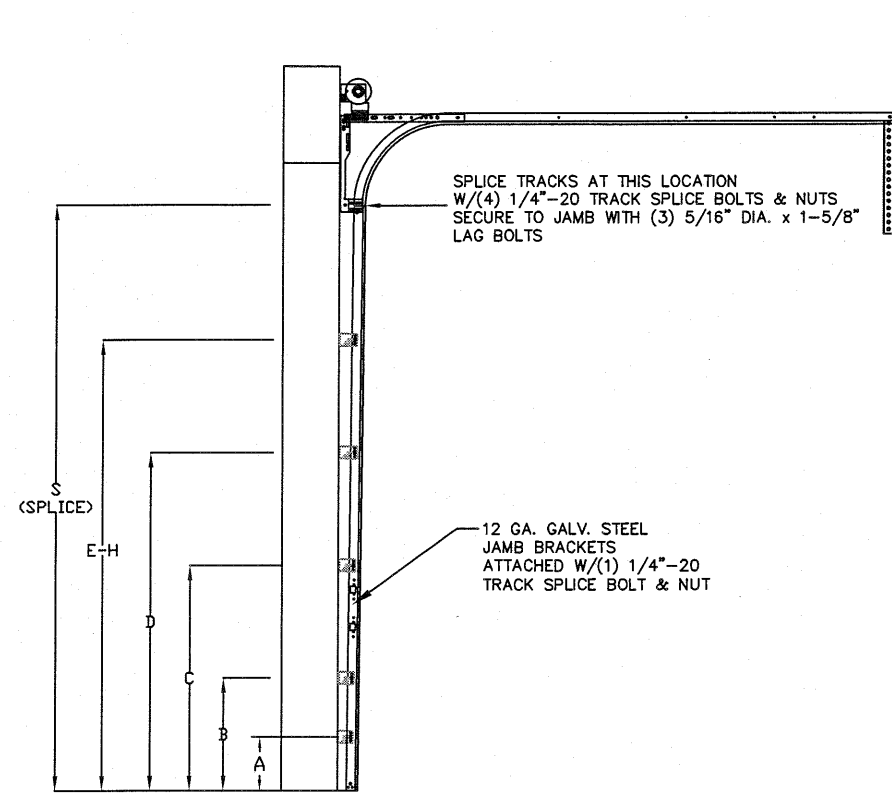
2 X 6 VERTICAL JAMB ATTACHMENT TO GROUTED C-90 BLOCK (2000 PSI GROUT)
HILTI SLEEVE ANCHOR 3/8" X 2-3/4" STARTING 6" FROM ENDS THEN 24" O.C. (1 1/4" EMBEDMENT) (OR, USE FASTENERS FOR HOLLOW C-90 BLOCK)

*LAGS AND BOLTS CAN BE COUNTERSUNK TO PROVIDE A FLUSH MOUNTING SURFACE.
*PREPARATION OF WOOD JAMBS BY OTHERS

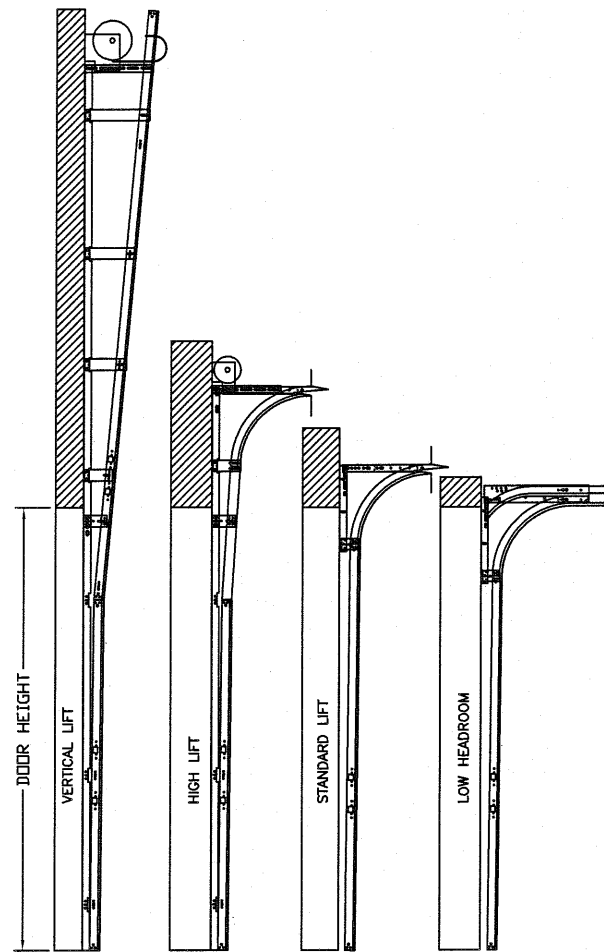


REV	DESCRIPTION OF REVISIONS	DATE	BY
MAX SIZE 9' WIDTH 14' HEIGHT DESIGN LOADS +26.7 PSF -31.6 PSF TEST LOADS (1.5 x DESIGN LOADS) +40.1 PSF -47.4 PSF		Thomas L. Shelmerdine, PE (TX PE #85829) Structural Solutions, PA (TX Firm #F-004063) STATE OF TEXAS TX	
Amarr ENTREMATIC 165 CARRIAGE COURT WINSTON-SALEM, NC. 27105 MODEL #1200 HERITAGE 3000 MODEL #1200 OAK SUMMIT 3000 SHORT, LONG, FLUSH & OAK SUMMIT PANELS			
SIZE	DRAWN BY RLR	DATE 07/28/14	DRAWING NUMBER
B	CHECKED BY	DATE	IRC-1209-130-11
			SHEET 2 OF 3

5921-G W. Friendly Ave., Greensboro, NC 27410



TRACK CONFIGURATION FOR 6'6" UP TO 14' TALL DOORS (SEE TABLE 1)
N.T.S.



AVAILABLE TRACK CONFIGURATIONS
N.T.S.

TABLE 1

DOOR HEIGHT	TRACK ATTACHMENT						SPLICE
	A	B	C	D	E	F	
6' 6"	10"	38"	58"				70"
7'	10"	38"	58"				76"
7' 6"	10"	38"	58"				82"
8'	10"	38"	58"				88"
8' 6"	10"	38"	58"	82"			82"
9'	10"	38"	58"	82"			100"
9' 6"	10"	38"	58"	82"			106"
10'	10"	38"	58"	82"			112"
10' 6"	10"	38"	58"	82"	106"		118"
11'	10"	38"	58"	82"	106"		124"
11' 6"	10"	38"	58"	82"	106"		130"
12'	10"	38"	58"	82"	106"		136"
12' 6"	10"	38"	58"	82"	106"	130"	142"
13'	10"	38"	58"	82"	106"	130"	148"
13' 6"	10"	38"	58"	82"	106"	130"	154"
14'	10"	38"	58"	82"	106"	130"	160"

ALL TRACK ATTACHMENT SPACING +/-2" ALLOWED WITH SYP OR SPF NO. 2 OR BETTER ONLY

TABLE 2

DOOR HEIGHT	SECTION HEIGHTS							
	Btm	#2	#3	#4	#5	#6	#7	#8
14' 0"	21"	21"	21"	21"	21"	21"	21"	21"
13' 6"	21"	21"	21"	21"	21"	18"	18"	21"
13' 0"	21"	21"	21"	18"	18"	18"	18"	21"
12' 6"	21"	18"	18"	18"	18"	18"	18"	21"
12' 0"	21"	21"	21"	21"	21"	18"	21"	
11' 6"	21"	21"	21"	18"	18"	18"	21"	
11' 0"	21"	18"	18"	18"	18"	18"	21"	
10' 6"	21"	21"	21"	21"	21"	21"		
10' 0"	21"	21"	21"	18"	18"	21"		
9' 6"	21"	18"	18"	18"	18"	21"		
9' 0"	18"	18"	18"	18"	18"			
8' 6"	21"	21"	21"	18"	21"			
8' 0"	21"	18"	18"	18"	21"			
7' 6"	18"	18"	18"	18"				
7' 0"	21"	21"	21"	21"				
6' 6"	21"	18"	18"	21"				

TABLE 3

Section Width (ft)	Panel Type	Center Stile Location (Measured from Left Edge)	Max Design Loads Allowed	
			Positive (PSF)	Negative (PSF)
8' 0"	Short	48.000	30.0	35.5
8' 0"	Long	48.000	30.0	35.5
8' 2"	Short	49.000	29.4	34.8
8' 2"	Long	49.000	29.4	34.8
8' 4"	Short	50.000	28.8	34.1
8' 4"	Long	50.000	28.8	34.1
8' 6"	Short	51.000	28.2	33.4
8' 6"	Long	51.000	28.2	33.4
8' 8"	Short	52.000	27.7	32.8
8' 8"	Long	52.000	27.7	32.8
8' 10"	Short	53.000	27.2	32.1
8' 10"	Long	53.000	27.2	32.1
9' 0"	Short	54.000	26.7	31.6
9' 0"	Long	54.000	26.7	31.6

REV	DESCRIPTION OF REVISIONS	DATE	BY

MAX SIZE
9' WIDTH
14' HEIGHT

DESIGN LOADS
+26.7 PSF
-31.6 PSF

TEST LOADS
(1.5 x DESIGN LOADS)
+40.1 PSF
-47.4 PSF

TX

Thomas L. Shelmerdine, PE (TX PE #85829)
Structural Solutions, PA (TX Firm #F-004063)

5921-G W. Friendly Ave., Greensboro, NC 27410

ENTREMATIC
165 CARRIAGE COURT WINSTON-SALEM, NC. 27105

MODEL #1200 HERITAGE 3000
MODEL #1200 OAK SUMMIT 3000
SHORT, LONG, FLUSH & OAK SUMMIT PANELS

SIZE	DRAWN BY	RLR	DATE	07/28/14	DRAWING NUMBER
B	CHECKED BY		DATE		IRC-1209-130-11

SHEET 3 OF 3