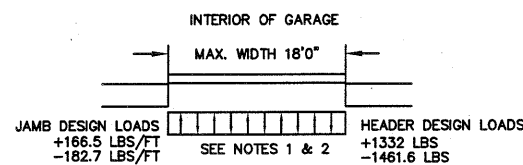
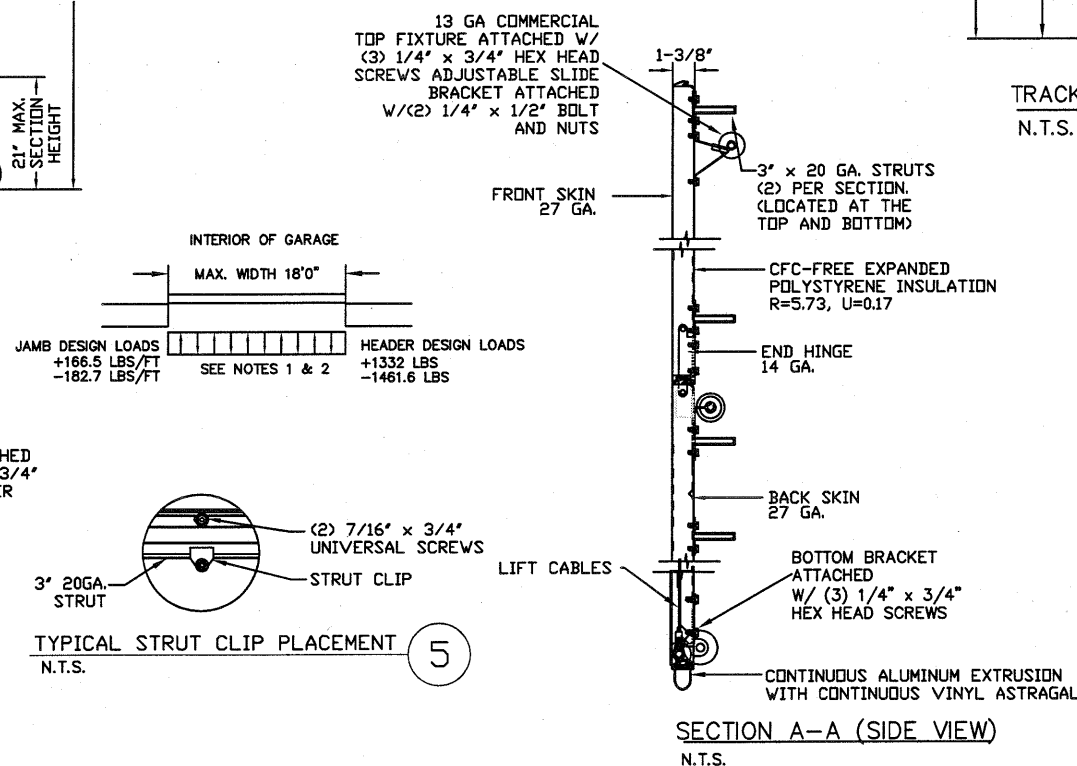
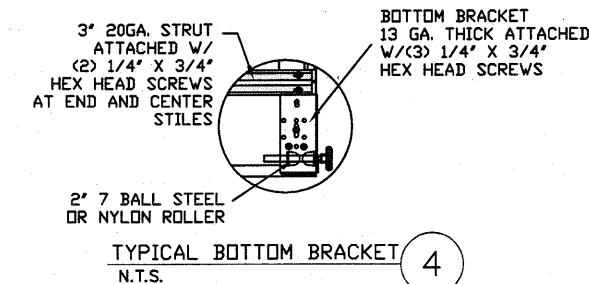
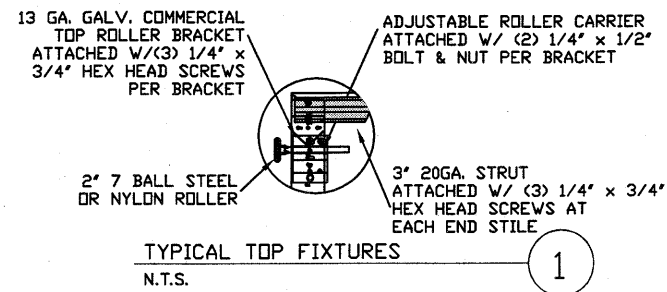
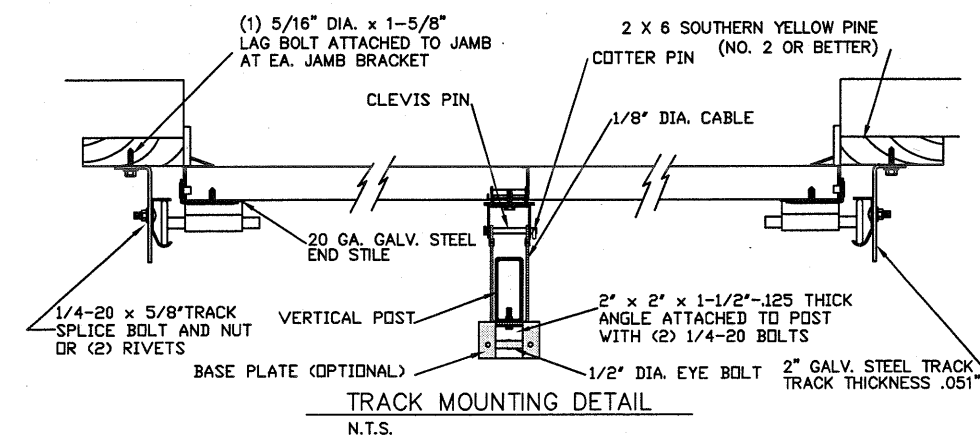
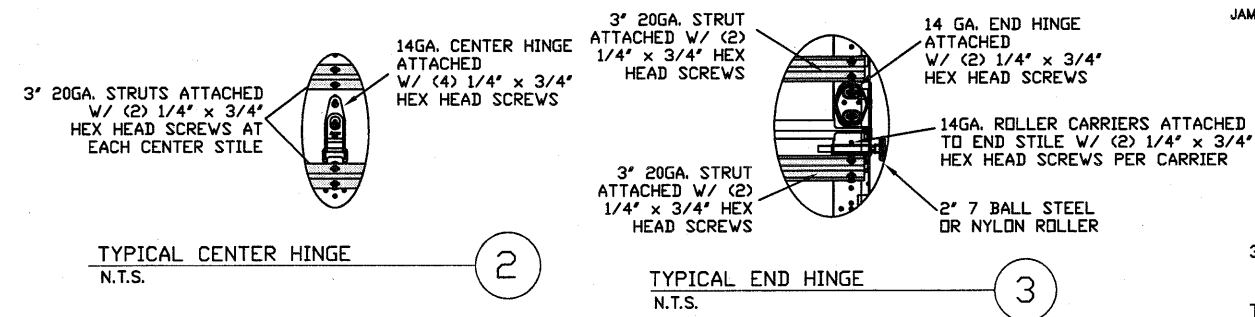


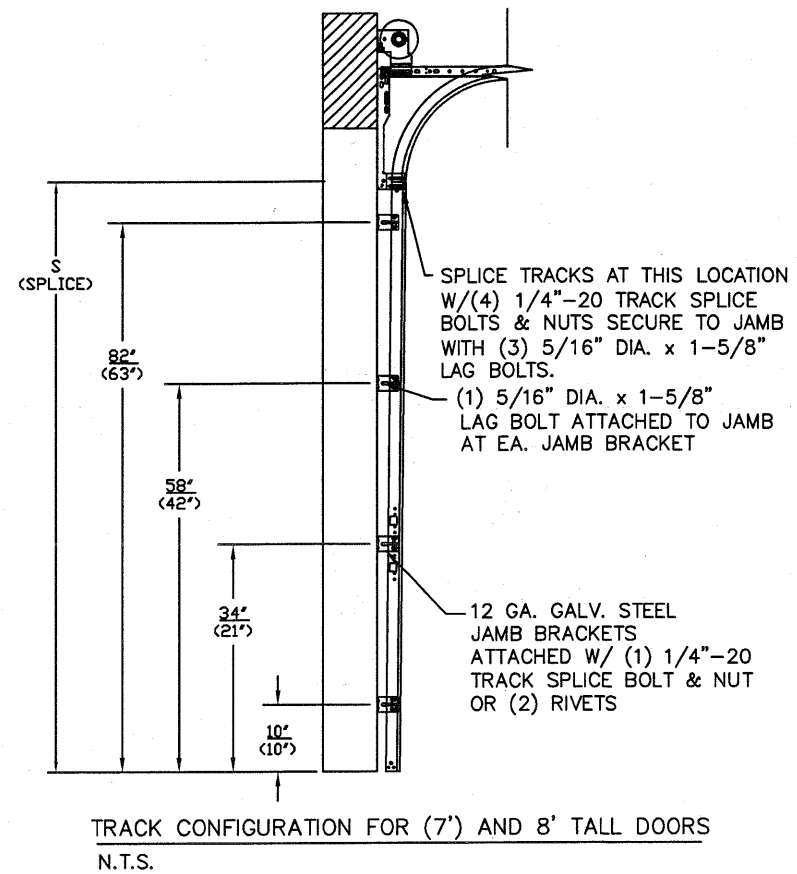
INSIDE ELEVATION
N.T.S.



THE METHOD OF TESTING WAS IN SUBSTANTIAL CONFORMANCE WITH THE PROCEDURE DESCRIBED IN ASTM E330 AND DASMA 108. THE PRESSURES SHOWN ON THE DRAWINGS WERE CALCULATED USING ASCE 7-98/02/05 WITH THE FOLLOWING PARAMETERS (5 FEET OF DOOR WIDTH IN THE END ZONE, ROOF AT ANY SLOPE):

WIND SPEED (MPH)	155	140	133	127	122
EXPOSURE LEVEL	B	C	C	D	D
MEAN ROOF HEIGHT	30'	15'	25'	15'	25'

- SPECIFICATIONS AND NOTES
- THE HEADER RECEIVES MAXIMUM DESIGN LOADS OF: +1332 LBS & -1461.6 LBS AT THE TOP OF THE POST.
 - EACH VERTICAL JAMBS RECEIVES MAXIMUM DESIGN LOADS OF: +166.5 LBS/FT & -182.7 LBS/FT
 - DOORS AND HARDWARE WILL BE DESIGNED, MANUFACTURED AND INSTALLED WITH STANDARDS AS SET FORTH BY DASMA.
 - DOOR SECTIONS SHALL BE 27 GA. MIN. (.0151") INTERIOR AND EXTERIOR SKIN ROLLED FORMED LIGHT COMMERCIAL QUALITY
 - SUPPORTING STRUCTURAL ELEMENTS SHALL BE DESIGNED BY A REGISTERED PROFESSIONAL ENGINEER FOR WIND LOADS INDICATED ON THIS DRAWING IN ADDITION TO OTHER LOADINGS.



REV	DESCRIPTION OF REVISIONS	DATE	BY
A	NOTE 4 SKIN GAUGE CORRECTED	2/21/08	SKW
B	REVISED NOTE 6	9/2/08	BHG
C	UPDATED WJATS, ASCE MPH DETAIL, ADDED TABLE 2	12/1/11	RLR
D	CORRECTED ADHESIVE BACKED STILE SIZE CALL OUT	8/20/19	DLJ

MAX SIZE 18' x 8'

DESIGN LOADS +37.0 PSF -40.6 PSF

TEST LOADS (1.5 x DESIGN LOADS) +55.5 PSF -61.0 PSF

Thomas L. Shelmerdine, PE (TX PE #85829) Structural Solutions, PA (TX Firm #F-04063)

STATE OF TEXAS
THOMAS L. SHELMERDINE
85829
LICENSED PROFESSIONAL ENGINEER
TX

5921-G W. Friendly Ave., Greensboro, NC 27410

Amarr

165 CARRIAGE COURT WINSTON-SALEM, N.C. 27105 WWW.AMARR.COM

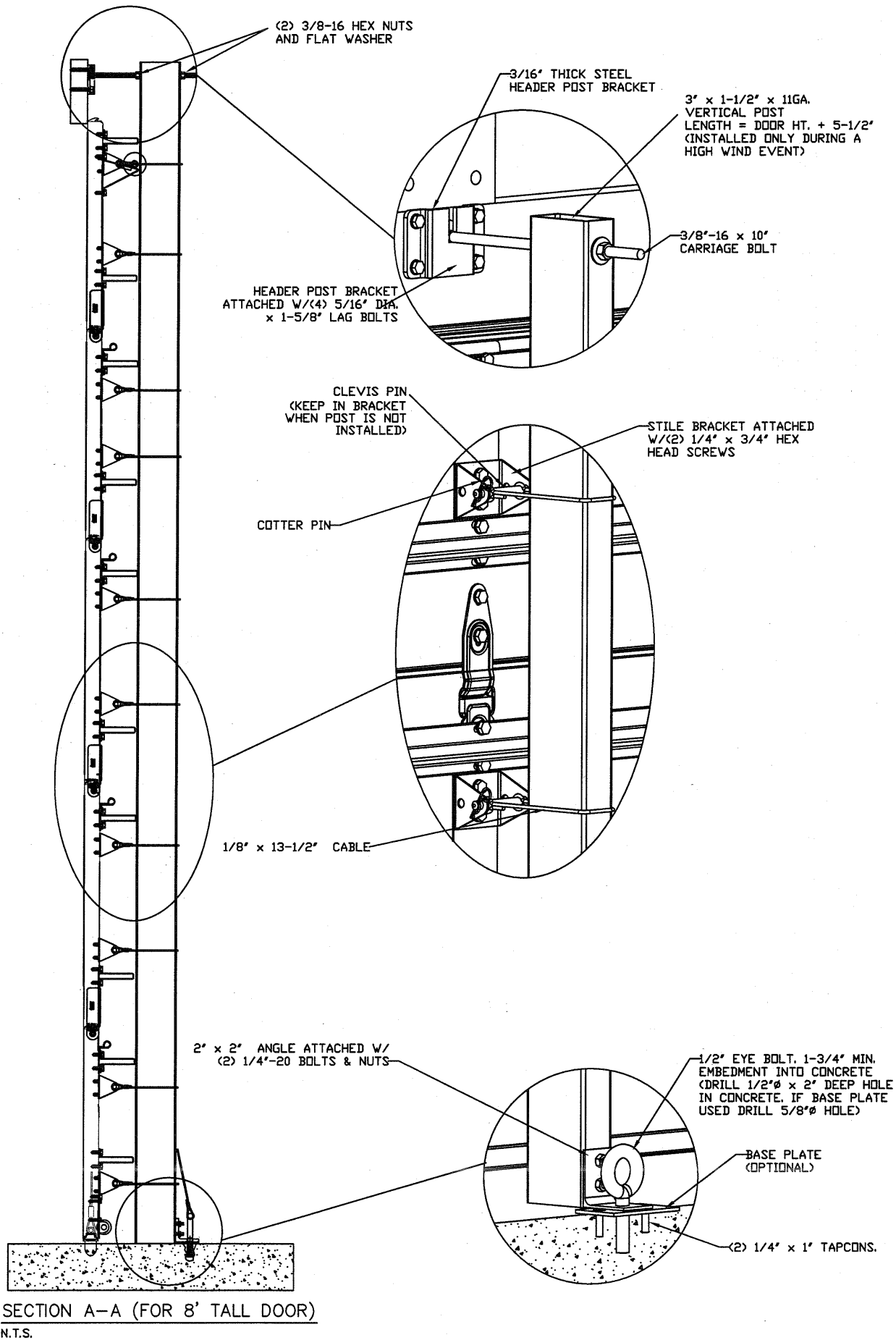
MODEL #1500 STRATFORD 3000
MODEL #1200 HERITAGE 3000
MODEL #1550 OAK SUMMIT 3000
SHORT, LONG, FLUSH & OAK SUMMIT PANELS

SIZE	DRAWN BY	BHG	DATE	11/08/06	DRAWING NUMBER
B	CHECKED BY	DLJ	DATE	11/08/06	IRC-1518-155-45

SHEET 1 OF 3

WOOD JAMB & HEADER ATTACHMENT TO STRUCTURE

SEE NOTE 1

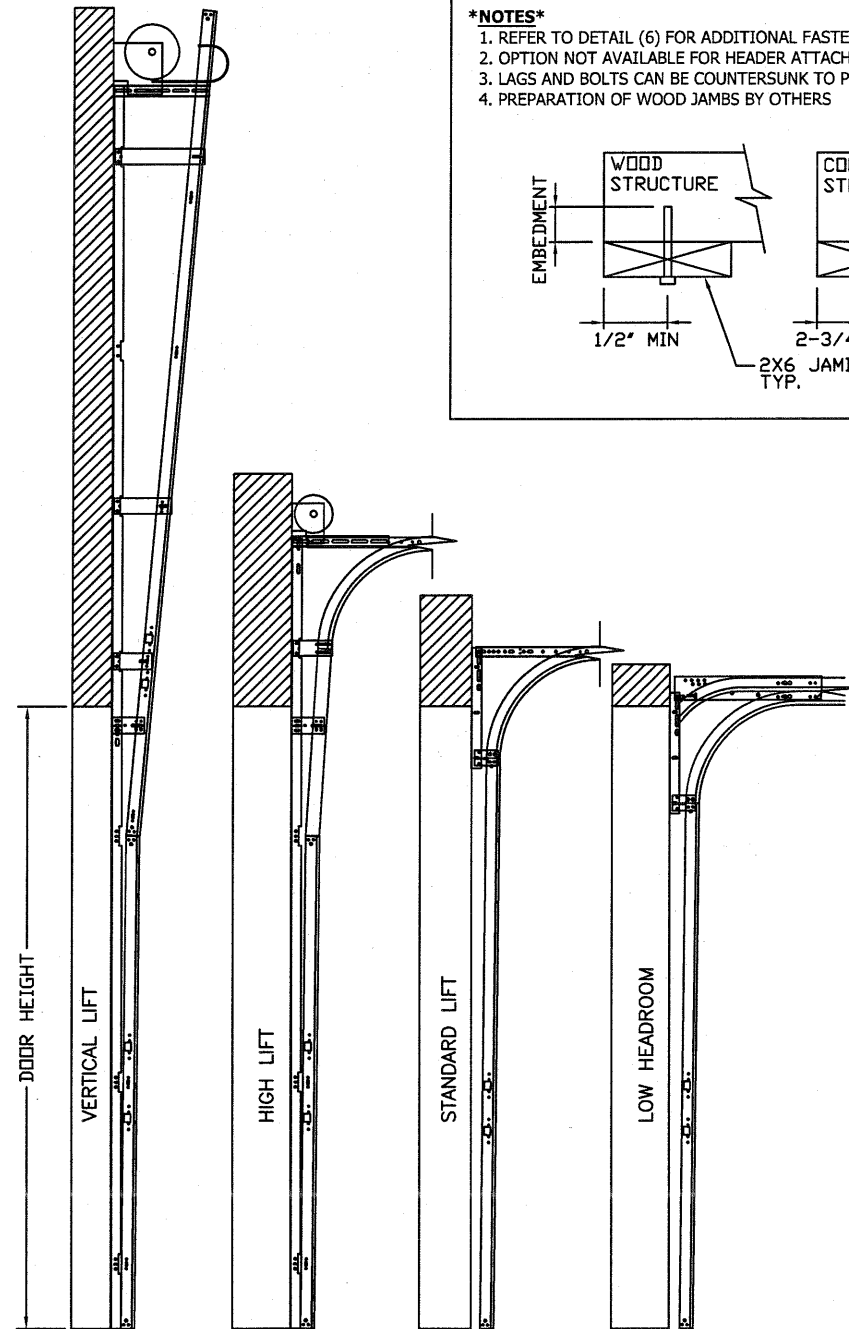
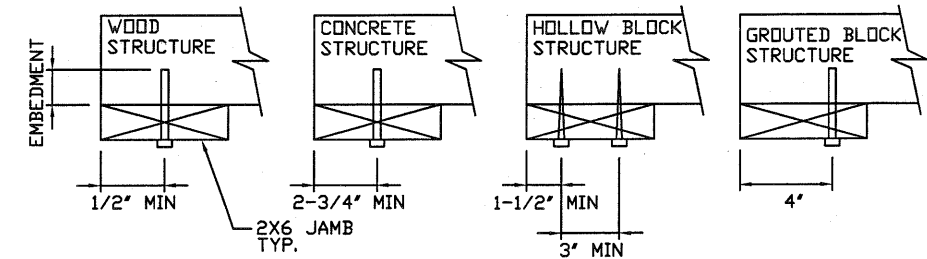


SECTION A-A (FOR 8' TALL DOOR)
N.T.S.

- 2 X 6 VERTICAL JAMB & HEADER ATTACHMENT TO WOOD FRAME STRUCTURE**
 5/16" X 3" LAG SCREWS STARTING 6" FROM ENDS THEN 24" O.C. (1 1/2" EMBEDMENT)
2 X 6 VERTICAL JAMB & HEADER ATTACHMENT TO 2,000 PSI CONCRETE
 HILTI KWIK BOLT 3/8" X 4" STARTING 6" FROM ENDS THEN 24" O.C. (2 1/2" EMBEDMENT)
 HILTI SLEEVE ANCHOR 3/8" X 2-3/4" STARTING 6" FROM ENDS THEN 24" O.C. (1 1/4" EMBEDMENT)
 ITW/RAMSET REDHEAD (TRU-BOLT) 3/8" X 4" STARTING 6" FROM ENDS THEN 24" O.C. (2 1/2" EMBEDMENT)
2 X 6 VERTICAL JAMB & HEADER ATTACHMENT TO HOLLOW C-90 BLOCK *SEE NOTE 2*
 SIMPSON 1/4" X 3" TITEN SCREWS STARTING 6" FROM ENDS, USE PAIRS OF FASTENERS (3" APART) AT 16" O.C. (1 1/2" EMBEDMENT)
 HILTI 1/4" X 2-3/4" KWIK-CON II+ SCREWS STARTING 6" FROM ENDS, USE PAIRS OF FASTENERS (3" APART) AT 16" O.C. (1 1/4" EMBEDMENT)
2 X 6 VERTICAL JAMB & HEADER ATTACHMENT TO GROUTED C-90 BLOCK (2000 PSI GROUT)
 HILTI SLEEVE ANCHOR 3/8" X 2-3/4" STARTING 6" FROM ENDS THEN 24" O.C. (1 1/4" EMBEDMENT)

NOTES

- REFER TO DETAIL (6) FOR ADDITIONAL FASTENERS AT HEADER
- OPTION NOT AVAILABLE FOR HEADER ATTACHMENT
- LAGS AND BOLTS CAN BE COUNTERSUNK TO PROVIDE A FLUSH MOUNTING SURFACE
- PREPARATION OF WOOD JAMBS BY OTHERS

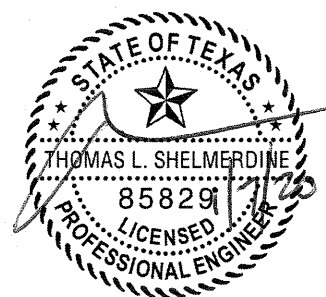


AVAILABLE TRACK CONFIGURATIONS
N.T.S.

REV	DESCRIPTION OF REVISIONS	DATE	BY
A	NOTE 4 SKIN GAUGE CORRECTED	2/21/08	SKW
B	REVISED NOTE 6	9/2/08	BHG
C	UPDATED WJATS, ASCE MPH DETAIL, ADDED TABLE 2	12/1/11	RLR
D	CORRECTED ADHESIVE BACKED STILE SIZE CALL OUT	8/20/19	DLJ

MAX SIZE
18' x 8'
DESIGN LOADS
+37.0 PSF
-40.6 PSF
TEST LOADS
(1.5 x DESIGN LOADS)
+55.5 PSF
-61.0 PSF

Thomas L. Shelmerdine, PE (TX PE #85829)
Structural Solutions, PA (TX Firm #004063)



TX



165 CARRIAGE COURT WINSTON-SALEM, N.C. 27105 WWW.AMARR.COM
MODEL #1500 STRATFORD 3000
MODEL #1200 HERITAGE 3000
MODEL #1550 OAK SUMMIT 3000
 SHORT, LONG, FLUSH & OAK SUMMIT PANELS

SIZE	DRAWN BY	BHG	DATE	11/08/06	DRAWING NUMBER
B	CHECKED BY	DLJ	DATE	11/08/06	IRC-1518-155-45

5921-G W. Friendly Ave., Greensboro, NC 27410


TABLE 1

Section			Panel Type	Stile Locations (Measured From Left Edge)		
Width (ft)	Width (in)	Height(s) (in)		1nd (in)	2nd (in)	3rd (in)
16'-2"	194	18&21	Short	50.272	97.000	143.728
16'-2"	194	18&21	Long	51.168	97.000	142.834
16'-2"	194	18&21	Oksmt	48.688	96.938	145.188
16'-4"	196	18&21	Short	51.272	98.000	144.728
16'-4"	196	18&21	Long	52.168	98.000	143.834
16'-4"	196	18&21	Oksmt	49.022	97.940	146.858
16'-6"	198	18&21	Short	52.272	99.000	145.728
16'-6"	198	18&21	Long	51.340	99.000	146.660
16'-6"	198	18&21	Oksmt	49.355	98.939	148.523
16'-8"	200	18&21	Short	51.340	100.000	148.660
16'-8"	200	18&21	Long	52.200	100.000	147.800
16'-8"	200	18&21	Oksmt	49.855	99.939	150.023
16'-10"	202	18&21	Short	51.500	101.000	150.500
16'-10"	202	18&21	Long	53.200	101.000	148.800
16'-10"	202	18&21	Oksmt	50.355	100.939	151.523
17'-0"	204	18&21	Short	53.340	102.000	150.660
17'-0"	204	18&21	Long	54.200	102.000	149.800
17'-0"	204	18&21	Oksmt	50.855	101.939	153.023
17'-2"	206	18&21	Short	53.000	103.000	153.000
17'-2"	206	18&21	Long	55.200	103.000	150.800
17'-2"	206	18&21	Oksmt	51.355	102.939	154.523
17'-4"	208	18&21	Short	54.000	104.000	154.000
17'-4"	208	18&21	Long	56.200	104.000	151.800
17'-4"	208	18&21	Oksmt	51.855	103.939	156.023
17'-6"	210	18&21	Short	55.000	105.000	155.000
17'-6"	210	18&21	Long	57.200	105.000	152.800
17'-6"	210	18&21	Oksmt	52.355	104.939	157.523
17'-8"	212	18&21	Short	54.800	106.000	157.200
17'-8"	212	18&21	Long	55.800	106.000	156.200
17'-8"	212	18&21	Oksmt	52.855	105.939	159.023
17'-10"	214	18&21	Short	55.800	107.000	158.200
17'-10"	214	18&21	Long	56.250	107.000	157.750
17'-10"	214	18&21	Oksmt	53.355	106.939	160.523
18'-0"	216	18&21	Short	57.250	108.000	158.750
18'-0"	216	18&21	Long	57.800	108.000	158.200
18'-0"	216	18&21	Oksmt	53.855	107.939	162.023

TABLE 2

Section	Positive (PSF)	Negative (PSF)
16'2	40.9	44.9
16'4	40.5	44.5
16'6	40.1	44
16'8	39.7	43.6
16'10	39.3	43.1
17'0	38.9	42.7
17'2	38.6	42.3
17'4	38.2	41.9
17'6	37.8	41.5
17'8	37.5	41.1
17'10	37.1	40.7
18'0	37	40.6

REV	DESCRIPTION OF REVISIONS	DATE	BY
A	NOTE 4 SKIN GAUGE CORRECTED	2/21/08	SKW
B	REVISED NOTE 6	9/2/08	BHG
C	UPDATED WJATS, ASCE MPH DETAIL, ADDED TABLE 2	12/1/11	RLR
D	CORRECTED ADHESIVE BACKED STILE SIZE CALL OUT	8/20/19	DLJ

<p>MAX SIZE 18' x 8'</p> <p>DESIGN LOADS +37.0 PSF -40.6 PSF</p> <p>TEST LOADS (1.5 x DESIGN LOADS) +55.5 PSF -61.0 PSF</p>	 <p>THOMAS L. SHELMERDINE 85829 LICENSED PROFESSIONAL ENGINEER TX</p>	<p>Thomas L. Shelmerdine, PE (TX PE #85829) Structural Solutions, PA (TX Firm #004063)</p> <p style="writing-mode: vertical-rl; transform: rotate(180deg);">5921-G W. Friendly Ave., Greensboro, NC 27410</p>
---	--	---

Amarr

165 CARRIAGE COURT WINSTON-SALEM, N.C. 27105 WWW.AMARR.COM

MODEL #1500 STRATFORD 3000
MODEL #1200 HERITAGE 3000
MODEL #1550 OAK SUMMIT 3000
SHORT, LONG, FLUSH & OAK SUMMIT PANELS

SIZE	DRAWN BY	BHG	DATE	11/08/06	DRAWING NUMBER
B	CHECKED BY	DLJ	DATE	11/08/06	IRC-1518-155-45

SHEET 3 OF 3