

12 GA. (MIN.) GALV. STEEL COMMERCIAL TOP ROLLER BRACKET ATTACHED W/ (3) 1/4" x 3/4" HEX HEAD SCREWS PER BRACKET

3" 18GA. STRUTS ATTACHED W/ (2) 1/4" x 3/4" HEX HEAD SCREWS AT EACH END STILE

2" 10B STL 4.5" STEM ROLLER (MIN) W/ 7/16" BOLT RETAINER

ADJUSTABLE ROLLER CARRIER ATTACHED W/ (2) 5/16" x 3/4" BOLT & NUT PER BRACKET

TYPICAL TOP FIXTURES  
N.T.S.

3" 18GA. STRUTS ATTACHED W/ (2) 1/4" x 3/4" HEX HEAD SCREWS AT EACH CENTER STILE

14GA. CENTER HINGE ATTACHED W/ (5) 1/4" x 3/4" HEX HEAD SCREWS

TYPICAL CENTER HINGE  
N.T.S.

12 GA COMMERCIAL TOP FIXTURE ATTACHED W/ (3) 1/4" x 3/4" HEX HEAD SCREWS ADJUSTABLE SLIDE BRACKET ATTACHED W/ (2) 1/4" x 1/2" BOLT AND NUTS

14 GA. (MIN.) FLAG BRACKET ATTACHED TO WOOD JAMB W/ (3) 5/16" DIA. X 1-5/8" LAG BOLTS AND TO TRACK W/ (4) 1/4"-20 x 5/8" TRACK SPLICE BOLTS AND NUTS

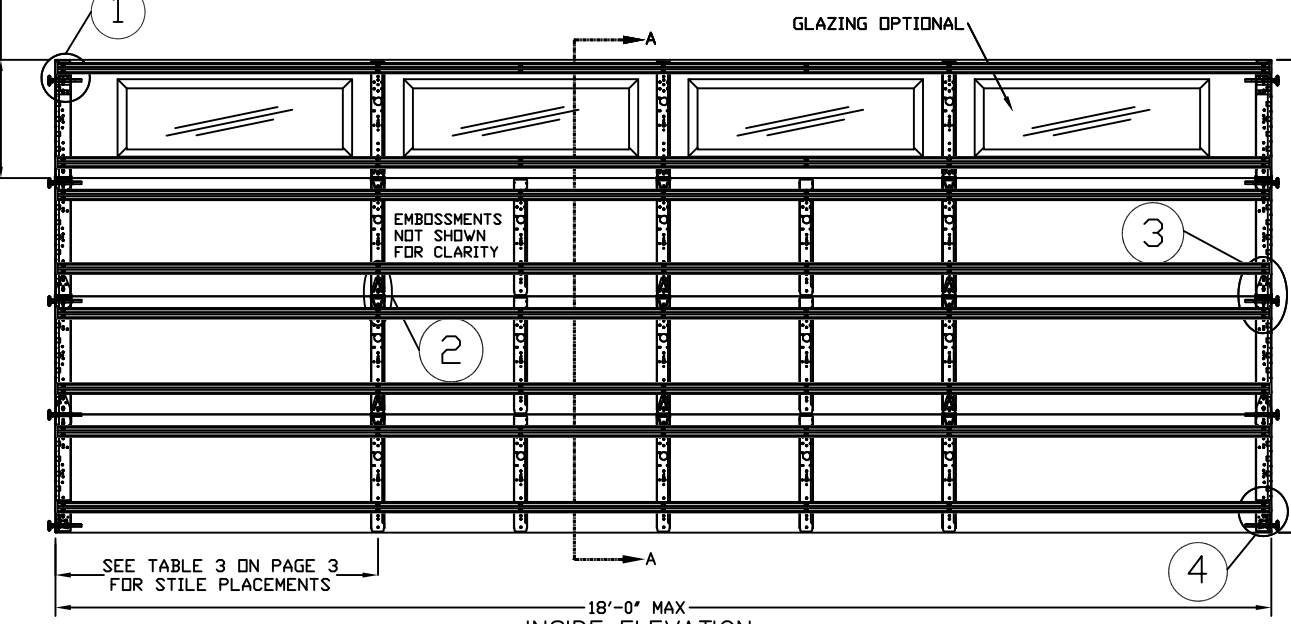
SPLICE TRACKS AT THIS LOCATION W/ (4) 1/4"-20 TRACK SPLICE BOLTS & NUTS SECURE TO JAMB WITH (3) 5/16" DIA. x 1-5/8" LAG BOLTS

(1) 5/16" DIA. x 1-5/8" LAG BOLT ATTACHED TO JAMB AT EA. JAMB BRACKET

12 GA. GALV. STEEL JAMB BRACKETS ATTACHED W/ (1) 1/4"-20 TRACK SPLICE BOLT & NUT OR (2) RIVETS

TRACK CONFIGURATION FOR 6'6" UP TO 14' TALL DOORS  
N.T.S.

SEE (TABLE 1) ON PAGE 3 FOR RECOMMENDED SECTION CONFIGURATION



18'-0" MAX  
INSIDE ELEVATION  
N.T.S.

3" 18GA. STRUTS ATTACHED W/ (2) 1/4" x 3/4" HEX HEAD SCREWS AT EACH CENTER STILE

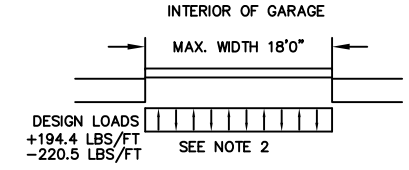
GLAZED SECTION END HINGE  
N.T.S.

14GA. CENTER HINGE ATTACHED W/ (6) 1/4" x 3/4" HEX HEAD SCREWS

GLAZED SECTION CENTER HINGE  
N.T.S.

3" x 18 GA. STRUTS (2) PER SECTION

SECTION A-A (SIDE VIEW)  
N.T.S.



SPECIFICATIONS AND NOTES

- ALL THE LOAD FROM THE DOOR IS TRANSFERRED TO THE VERTICAL TRACK. FROM THE TRACK THE LOAD IS TRANSFERRED TO THE VERTICAL JAMBS. THE HORIZONTAL JAMB OR HEADER RECEIVES NO PORTION OF THE LOAD TRANSFERRED FROM THE DOOR.
- EACH VERTICAL JAMB RECEIVES MAXIMUM DESIGN LOADS OF: +194.4 LBS/FT & -220.5 LBS/FT
- DOORS AND HARDWARE WILL BE DESIGNED, MANUFACTURED AND INSTALLED WITH STANDARDS AS SET FORTH BY DASMA.
- DOOR SECTIONS SHALL BE 25 GA. MIN. (.019") ROLLED FORMED LIGHT COMMERCIAL QUALITY
- SUPPORTING STRUCTURAL ELEMENTS SHALL BE DESIGNED BY A REGISTERED PROFESSIONAL ENGINEER FOR WIND LOADS INDICATED ON THIS DRAWING IN ADDITION TO OTHER LOADINGS.
- REFER TO TABLES ON PAGE 3 FOR ADDITIONAL DOOR WIDTHS AND THEIR DESIGN PRESSURES
- DOOR IS MANUFACTURED AND TESTED IN ACCORDANCE WITH THE 2018 IRC/IBC

3" 18GA. STRUTS ATTACHED W/ (2) 1/4" x 3/4" HEX HEAD SCREWS AT EACH CENTER STILE

14 GA. END HINGE ATTACHED W/ (5) 1/4" x 3/4" HEX HEAD SCREWS

3" 18GA. STRUT ATTACHED W/ (2) 1/4" x 3/4" HEX HEAD SCREWS AT END AND CENTER STILES

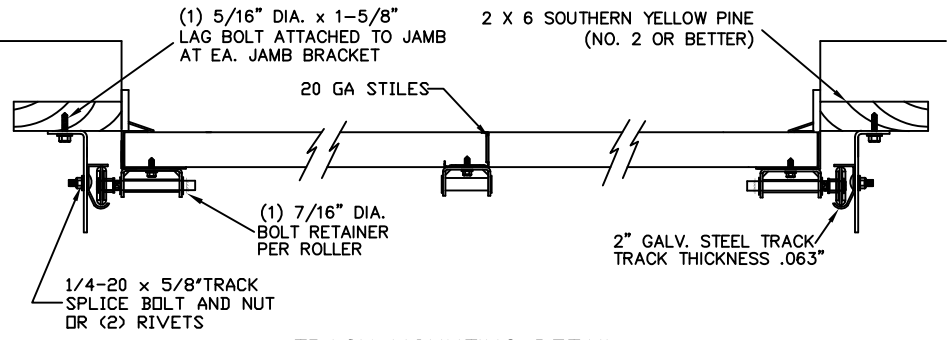
BOTTOM BRACKET 13 GA. THICK ATTACHED W/ (5) 1/4" x 3/4" HEX HEAD SCREWS

TYPICAL END HINGE  
N.T.S.

TYPICAL BOTTOM BRACKET  
N.T.S.

2" 10B STL 4.5" STEM ROLLER (MIN) W/ 7/16" BOLT RETAINER

2" 10B STL 4.5" STEM ROLLER (MIN) W/ 7/16" BOLT RETAINER



TRACK MOUNTING DETAIL  
N.T.S.

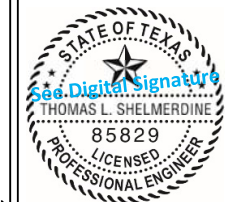
NOTE: FOR STRUT SCHEDULE SEE TABLE 4 ON PAGE 3

THE METHOD OF TESTING WAS IN SUBSTANTIAL CONFORMANCE WITH THE PROCEDURE DESCRIBED IN ASTM E330 AND ANSI/DASMA 108. THE PRESSURES SHOWN ON THE DRAWINGS WERE CALCULATED USING ASCE 7-16 WITH THE FOLLOWING PARAMETERS (5 FEET OF DOOR WIDTH IN THE END ZONE, ROOF AT ANY SLOPE):

WIND SPEED (MPH)	155	141	134	128	122
EXPOSURE LEVEL	B	C	C	D	D
MEAN ROOF HEIGHT	30'	15'	25'	15'	25'

REV	DESCRIPTION OF REVISIONS	DATE	BY
A	ADDED HERITAGE MODEL/DRAWING UPDATES	3/1/22	RLR

MAX SIZE  
18' x 14'  
DESIGN LOADS  
+21.6 PSF  
-24.5 PSF  
TEST LOADS  
(1.5 x DESIGN LOADS)  
+32.4 PSF  
-36.8 PSF



This document has been digitally signed & sealed by Thomas L. Shelmerdine, PE on the date shown. Printed copies of this document are not considered signed & sealed, and the signature must be verified on any electronic copies.

Thomas L. Shelmerdine, PE (TX PE #85829)  
Structural Solutions, PA (TX Firm #F-004063)  
5921-G W. Friendly Ave., Greensboro, NC 27410 TX

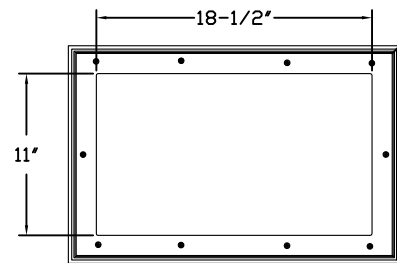
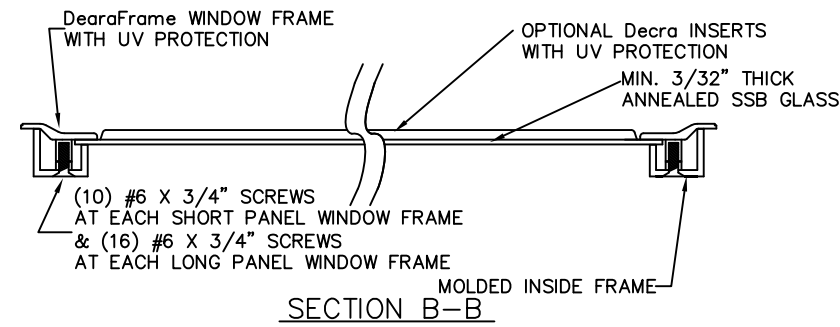


MODEL #625 AMARR LINCOLN 1000, 2000  
MODEL #675 AMARR HILLCREST 1000, 2000  
MODEL #950 AMARR HERITAGE 1000, 2000

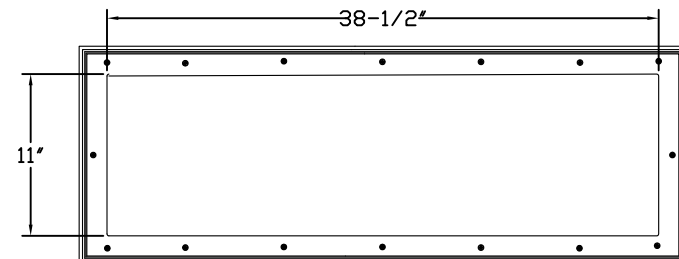
SIZE	DRAWN BY	DRC	DATE	05/12/21	DRAWING NUMBER
B	CHECKED BY	RLR	DATE	03/31/21	IRC-6218-120-17-L

# GLAZING OPTION CROSS SECTION

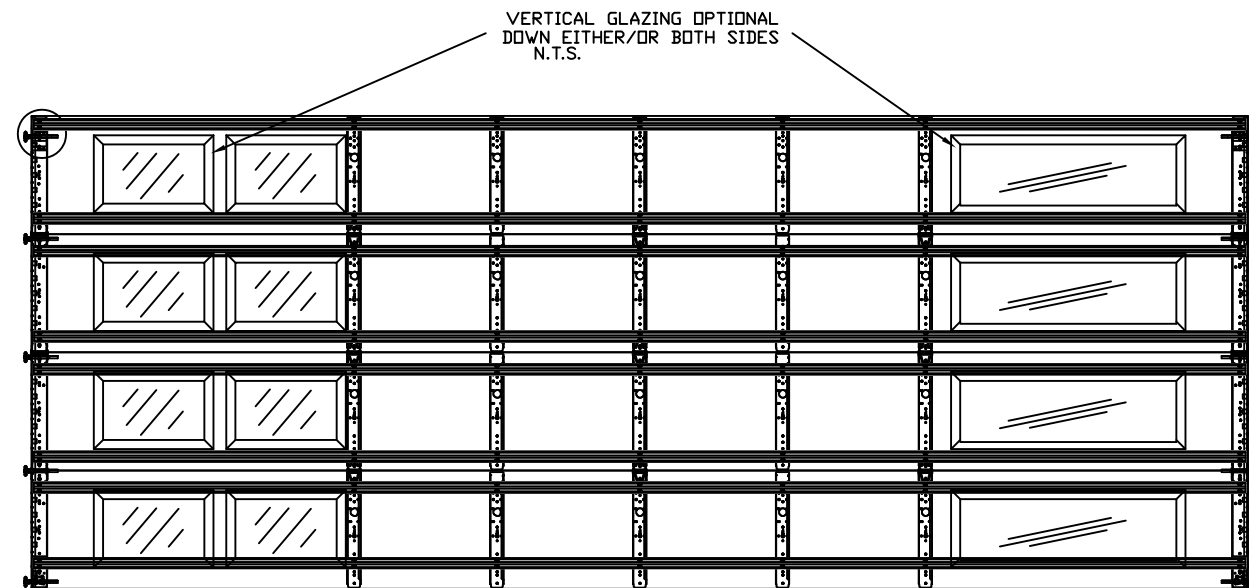
GLAZING NOT AVAILABLE IN WIND-BORNE DEBRIS REGION  
GLAZING MEETS ASTM E1300-04



SHORT PANEL GLAZING FASTENER DETAIL  
N.T.S.



LONG PANEL GLAZING FASTENER DETAIL  
N.T.S.

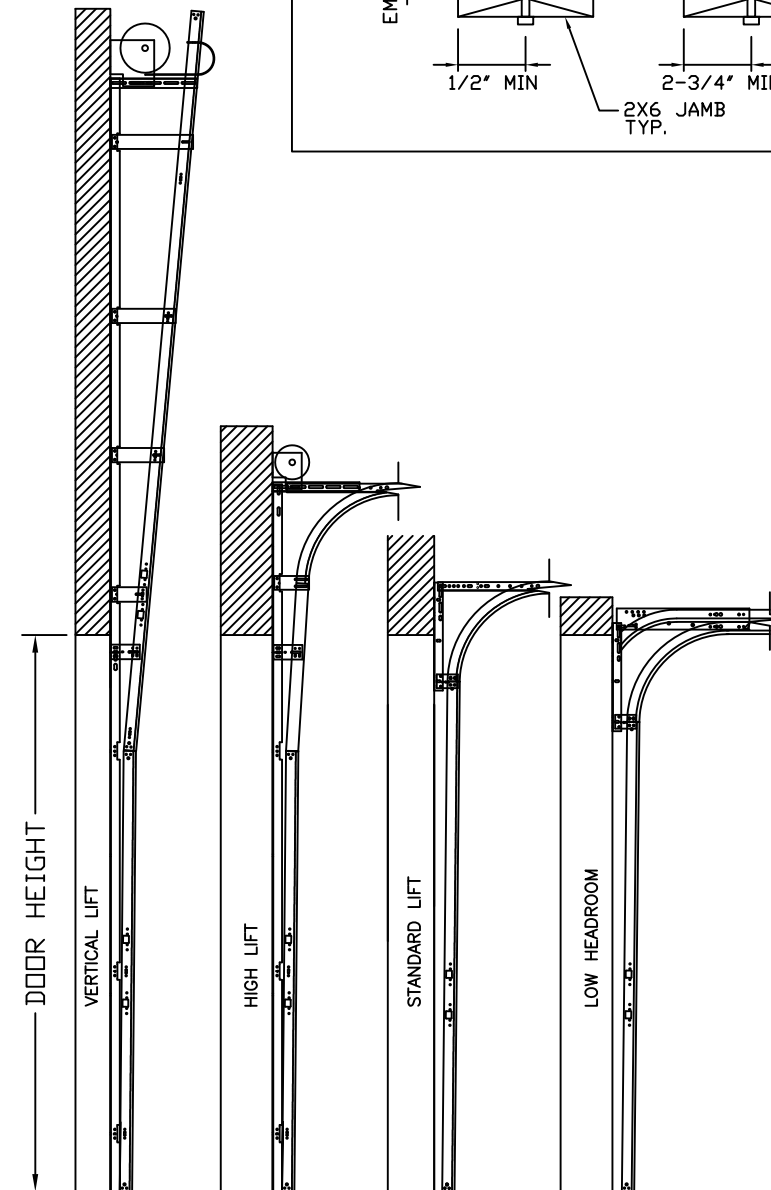
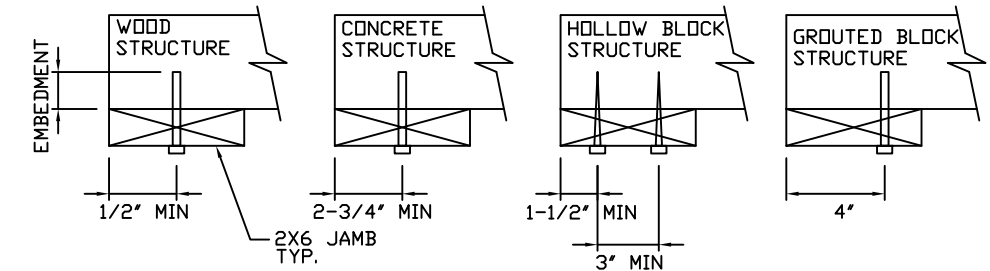


OPTIONAL SHORT/LONG PANEL VERTICAL GLAZING (STRUT AND STILE LAYOUT)  
\*SHORT PANEL GLAZING MAY BE DOUBLE VERTICAL ROWS (AS SHOWN) OR SINGLE VERTICAL ROW

# WOOD JAMB ATTACHMENT TO STRUCTURE

- 2 X 6 VERTICAL JAMB ATTACHMENT TO WOOD FRAME STRUCTURE  
5/16" X 3' LAG SCREWS STARTING 6" FROM ENDS THEN 24" O.C. (1 1/2" EMBEDMENT)
- 2 X 6 VERTICAL JAMB ATTACHMENT TO 2,000 PSI CONCRETE  
HILTI KWIK BOLT 3/8" X 4" STARTING 6" FROM ENDS THEN 24" O.C. (2 1/2" EMBEDMENT)  
HILTI SLEEVE ANCHOR 3/8" X 2-3/4" STARTING 6" FROM ENDS THEN 22" O.C. (1 1/4" EMBEDMENT)  
ITW/RAMSET REDHEAD (TRU-BOLT) 3/8" X 4" STARTING 6" FROM ENDS THEN 24" O.C. (2 1/2" EMBEDMENT)
- 2 X 6 VERTICAL JAMB ATTACHMENT TO HOLLOW C-90 BLOCK  
SIMPSON 1/4" X 3' TITEN SCREWS STARTING 6" FROM ENDS, USE PAIRS OF FASTENERS (3' APART) AT 16" O.C. (1 1/2" EMBEDMENT)  
HILTI 1/4" X 2-3/4" KWIK-CON II+ SCREWS STARTING 6" FROM ENDS, USE PAIRS OF FASTENERS (3' APART) AT 16" O.C. (1 1/4" EMBEDMENT)
- 2 X 6 VERTICAL JAMB ATTACHMENT TO GROUTED C-90 BLOCK (2000 PSI GROUT)  
HILTI SLEEVE ANCHOR 3/8" X 2-3/4" STARTING 6" FROM ENDS THEN 24" O.C. (1 1/4" EMBEDMENT) (OR, USE FASTENERS FOR HOLLOW C-90 BLOCK)

\*LAGS AND BOLTS CAN BE COUNTERSUNK TO PROVIDE A FLUSH MOUNTING SURFACE.  
\*PREPARATION OF WOOD JAMBS BY OTHERS



AVAILABLE TRACK CONFIGURATIONS  
N.T.S.

REV	DESCRIPTION OF REVISIONS	DATE	BY
A	ADDED HERITAGE MODEL/DRAWING UPDATES	3/1/22	RLR

MAX SIZE  
18' x 14'

DESIGN LOADS  
+21.6 PSF  
-24.5 PSF

TEST LOADS  
(1.5 x DESIGN LOADS)  
+32.4 PSF  
-36.8 PSF



This document has been digitally signed & sealed by Thomas L. Shelmerdine, PE on the date shown. Printed copies of this document are not considered signed & sealed, and the signature must be verified on any electronic copies.

Thomas L. Shelmerdine, PE (TX PE #85829)  
Structural Solutions, PA (TX Firm #F-004063)  
5921-G.W. Friendly Ave., Greensboro, NC 27410 TX



MODEL #625 AMARR LINCOLN 1000, 2000  
MODEL #675 AMARR HILLCREST 1000, 2000  
MODEL #950 AMARR HERITAGE 1000, 2000

SIZE	DRAWN BY	DRC	DATE	05/12/21	DRAWING NUMBER
B	CHECKED BY	RLR	DATE	03/31/21	IRC-6218-120-17-L

AMARR COMPANY  
165 CARRIAGE COURT WINSTON-SALEM, N.C. 27105 SHEET 2 OF 3

TABLE 1

DOOR HEIGHT	SECTION HEIGHTS							
	Btm	#2	#3	#4	#5	#6	#7	#8
14' 0"	21"	21"	21"	21"	21"	21"	21"	21"
13' 6"	21"	21"	21"	21"	21"	18"	18"	21"
13' 0"	21"	21"	21"	18"	18"	18"	18"	21"
12' 6"	21"	18"	18"	18"	18"	18"	18"	21"
12' 0"	21"	21"	21"	21"	21"	18"	21"	
11' 6"	21"	21"	21"	18"	18"	18"	21"	
11' 0"	21"	18"	18"	18"	18"	18"	21"	
10' 6"	21"	21"	21"	21"	21"	21"		
10' 0"	21"	21"	21"	18"	18"	21"		
9' 6"	21"	18"	18"	18"	18"	21"		
9' 0"	18"	18"	18"	18"	18"	18"		
8' 6"	21"	21"	21"	18"	21"			
8' 0"	21"	18"	18"	18"	21"			
7' 6"	18"	18"	18"	18"	18"			
7' 0"	21"	21"	21"	21"				
6' 6"	21"	18"	18"	21"				

TABLE 2

HEIGHT	TRACK ATTACHMENT								SPLICE
	A	B	C	D	E	F	G	H	
6' 0"	10"	18"	36"	54"					64"
6' 6"	10"	21"	38"	58"					70"
7' 0"	10"	21"	42"	63"					76"
7' 6"	10"	18"	36"	54"	72"				82"
8' 0"	10"	21"	39"	58"	75"				88"
8' 6"	10"	21"	42"	63"	81"				94"
9' 0"	10"	18"	36"	54"	72"	90"			100"
9' 6"	10"	21"	39"	57"	75"	93"			106"
10' 0"	10"	21"	42"	63"	81"	99"			112"
10' 6"	10"	21"	42"	63"	84"	105"			118"
11' 0"	10"	21"	39"	57"	75"	93"	111"		124"
11' 6"	10"	21"	42"	63"	81"	99"	117"		130"
12' 0"	10"	21"	42"	63"	84"	105"	123"		136"
12' 6"	10"	18"	36"	57"	75"	93"	111"	129"	142"
13' 0"	10"	21"	42"	63"	81"	99"	117"	135"	148"
13' 6"	10"	21"	42"	63"	84"	105"	123"	141"	154"
14' 0"	10"	21"	42"	63"	84"	105"	126"	147"	160"

ALL TRACK ATTACHMENT SPACING +/- 2" ALLOWED WITH SYP OR SPF NO. 2 OR BETTER ONLY

TABLE 3

Section	Panel Type	Center Stiles Locations (Measured from the Left Edge)					Max Design Loads Allowed	
		1st (in)	2nd (in)	3rd (in)	4th (in)	5th (in)	Positive (PSF)	Negative (PSF)
16' 2"	Short	50.27	73.64	97.00	120.36	143.73	24.0	27.3
16' 2"	Long	51.17	74.08	97.00	119.92	142.83	24.0	27.3
16' 2"	Bead Board	48.75	72.88	97.00	121.13	145.25	24.0	27.3
16' 4"	Short	51.27	74.64	98.00	121.36	144.73	23.8	27.0
16' 4"	Long	52.17	75.08	98.00	120.92	143.83	23.8	27.0
16' 4"	Bead Board	49.08	73.54	98.00	122.46	146.92	23.8	27.0
16' 6"	Short	52.27	75.64	99.00	122.36	145.73	23.6	26.7
16' 6"	Long	51.34	75.17	99.00	122.83	146.66	23.6	26.7
16' 6"	Bead Board	49.42	74.21	99.00	123.79	148.59	23.5	26.7
16' 8"	Short	51.34	75.67	100.00	124.33	148.66	23.3	26.5
16' 8"	Long	52.20	76.10	100.00	123.90	147.80	23.3	26.5
16' 8"	Bead Board	49.92	74.96	100.00	125.04	150.09	23.3	26.4
16' 10"	Short	51.50	76.25	101.00	125.75	150.50	23.1	26.2
16' 10"	Long	53.20	77.10	101.00	124.90	148.80	23.1	26.2
16' 10"	Bead Board	50.15	75.57	101.00	126.29	151.59	23.0	26.1
17' 0"	Short	53.34	77.67	102.00	126.33	150.66	22.9	25.9
17' 0"	Long	54.20	78.10	102.00	125.90	149.80	22.9	25.9
17' 0"	Bead Board	50.92	76.46	102.00	127.54	153.09	22.8	25.9
17' 2"	Short	53.00	78.00	103.00	128.00	153.00	22.6	25.7
17' 2"	Long	55.20	79.10	103.00	126.90	150.80	22.6	25.7
17' 2"	Bead Board	51.42	77.21	103.00	128.79	154.59	22.6	25.6
17' 4"	Short	54.00	79.00	104.00	129.00	154.00	22.4	25.4
17' 4"	Long	56.20	80.10	104.00	127.90	151.80	22.4	25.4
17' 4"	Bead Board	51.92	77.96	104.00	130.04	156.09	22.4	25.4
17' 6"	Short	55.00	80.00	105.00	130.00	155.00	22.2	25.2
17' 6"	Long	57.20	81.10	105.00	128.90	152.80	22.2	25.2
17' 6"	Bead Board	52.42	78.71	105.00	131.29	157.59	22.2	25.2
17' 8"	Short	54.80	80.40	106.00	131.60	157.20	22.0	25.0
17' 8"	Long	55.80	80.90	106.00	131.10	156.20	22.0	25.0
17' 8"	Bead Board	52.92	79.46	106.00	132.54	159.09	22.0	24.9
17' 10"	Short	55.80	81.40	107.00	132.60	158.20	21.8	24.7
17' 10"	Long	56.25	81.63	107.00	132.38	157.75	21.8	24.7
17' 10"	Bead Board	53.42	80.21	107.00	133.79	160.59	21.8	24.7
18' 0"	Short	57.25	82.63	108.00	133.38	158.75	21.6	24.5
18' 0"	Long	57.80	82.90	108.00	133.10	158.20	21.6	24.5
18' 0"	Bead Board	53.92	80.96	108.00	135.04	162.09	21.6	24.5

^ Stiles are not hinged.

TABLE 4

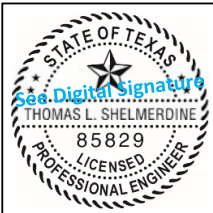
SECTION	STRUT SIZE
8TH	3"
	3"
7TH	3"
	3"
6TH	3"
	3"
5TH	3"
	3"
4TH	3"
	3"
3RD	3"
	3"
2ND	3"
	3"
BOTTOM	3"
	3"

REV	DESCRIPTION OF REVISIONS	DATE	BY
A	ADDED HERITAGE MODEL/DRAWING UPDATES	3/1/22	RLR

MAX SIZE  
18' x 14'

DESIGN LOADS  
+21.6 PSF  
-24.5 PSF


TEST LOADS  
(1.5 x DESIGN LOADS)  
+32.4 PSF  
-36.8 PSF



This document has been digitally signed & sealed by Thomas L. Shelmerdine, PE on the date shown. Printed copies of this document are not considered signed & sealed, and the signature must be verified on any electronic copies.

Thomas L. Shelmerdine, PE (TX PE #85829)  
Structural Solutions, PA (TX Firm #F-004063)  
5921-G.W. Friendly Ave., Greensboro, NC 27410

**TX**



**MODEL #625 AMARR LINCOLN 1000, 2000**  
**MODEL #675 AMARR HILLCREST 1000, 2000**  
**MODEL #950 AMARR HERITAGE 1000, 2000**

SIZE	DRAWN BY	DRC	DATE	05/12/21	DRAWING NUMBER
B	CHECKED BY	RLR	DATE	03/31/21	IRC-6218-120-17-L

AMARR COMPANY  
165 CARRIAGE COURT WINSTON-SALEM, N.C. 27105

SHEET 3 OF 3