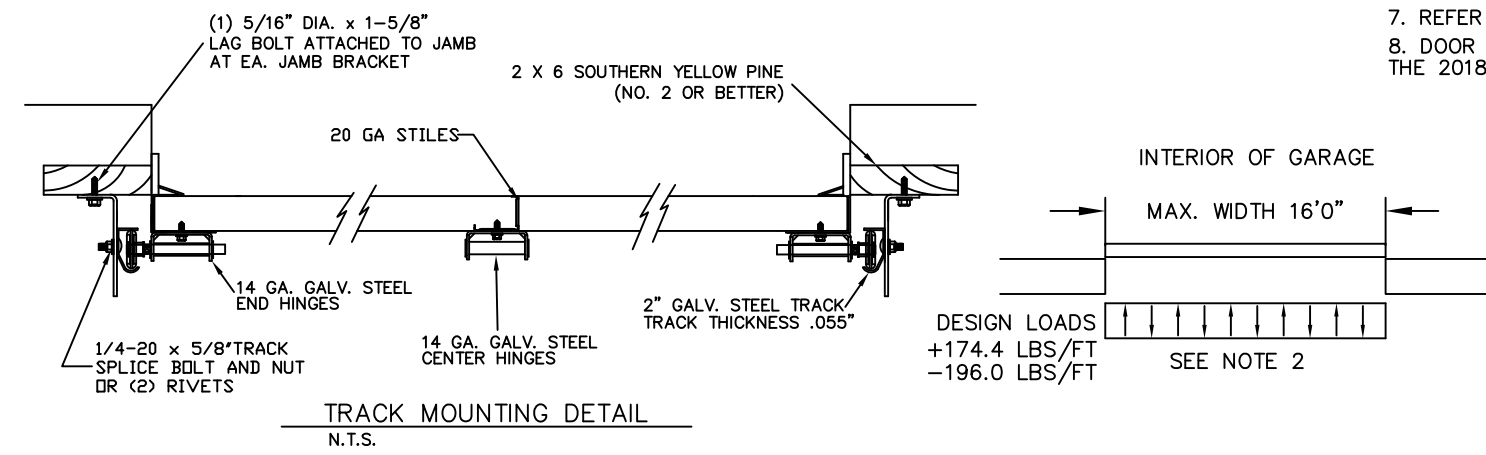


**SPECIFICATIONS AND NOTES**

1. ALL THE LOAD FROM THE DOOR IS TRANSFERRED TO THE VERTICAL TRACK, FROM THE TRACK THE LOAD IS TRANSFERRED TO THE VERTICAL JAMBS. THE HORIZONTAL JAMB OR HEADER RECEIVES NO PORTION OF THE LOAD TRANSFERRED FROM THE DOOR.
2. EACH VERTICAL JAMBS RECEIVES MAXIMUM DESIGN LOADS OF: +174.4 LBS/FT & -196.0 LBS/FT
3. DOOR AND HARDWARE WILL BE DESIGNED, MANUFACTURED AND INSTALLED WITH STANDARDS AS SET FORTH BY DASMA.
4. DOOR SECTIONS SHALL BE 25 GA. (.019) MIN. ROLLED FORMED LIGHT COMMERCIAL QUALITY
5. SUPPORTING STRUCTURAL ELEMENTS SHALL BE DESIGNED BY A REGISTERED PROFESSIONAL ENGINEER FOR WIND LOADS INDICATED ON THIS DRAWING IN ADDITION TO OTHER LOADINGS.
6. REFER TO TABLES ON PAGE 3 FOR ADDITIONAL DOOR WIDTHS AND THEIR DESIGN PRESSURES
7. REFER TO TABLE 4 ON PAGE 3 FOR STRUT SCHEDULE
8. DOOR IS MANUFACTURED AND TESTED IN ACCORDANCE WITH THE 2018 IRC/IBC



THE METHOD OF TESTING WAS IN SUBSTANTIAL CONFORMANCE WITH THE PROCEDURE DESCRIBED IN ASTM E330 AND DASMA 108. THE PRESSURES SHOWN ON THE DRAWINGS WERE CALCULATED USING ASCE 7-16 WITH THE FOLLOWING PARAMETERS (5 FEET OF DOOR WIDTH IN THE END ZONE, ROOF AT ANY SLOPE):

WIND SPEED (MPH)	155	140	133	127	122
EXPOSURE LEVEL	B	C	C	D	D
MEAN ROOF HEIGHT	30'	15'	25'	15'	25'

REV	DESCRIPTION OF REVISIONS	DATE	BY
A	ADDED HERITAGE MODEL/DRAWING UPDATES	3/1/22	RLR

MAX SIZE 16' x 14'

DESIGN LOADS  
+21.8 PSF  
-24.5 PSF

TEST LOADS (1.5 x DESIGN LOADS)  
+32.7 PSF  
-36.8 PSF

STATE OF TEXAS

THOMAS L. SHELMERDINE  
85829  
LICENSED PROFESSIONAL ENGINEER

This document has been digitally signed & sealed by Thomas L. Shelmerdine, PE on the date shown. Printed copies of this document are not considered signed & sealed, and the signature must be verified on any electronic copies.

Thomas L. Shelmerdine, PE (TX PE #85829)  
Structural Solutions, PA (TX Firm #F-004063)  
5921-G W. Friendly Ave., Greensboro, NC 27410 TX

# Amarr

**MODEL #625 AMARR LINCOLN 1000, 2000**  
**MODEL #675 AMARR HILLCREST 1000, 2000**  
**MODEL #950 AMARR HERITAGE 1000, 2000**

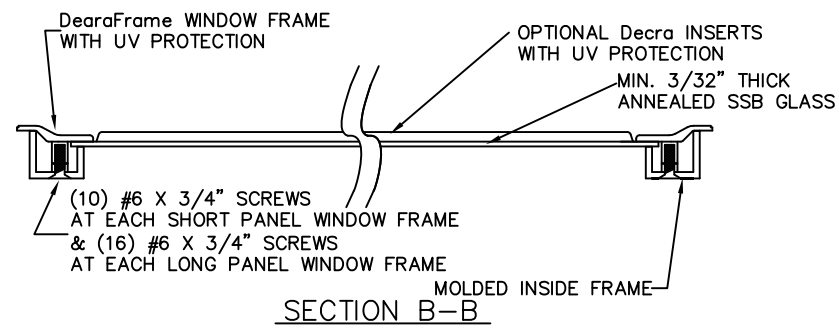
SIZE	DRAWN BY RLR	DATE 02/18/21	DRAWING NUMBER
B	CHECKED BY RLR	DATE 02/18/21	IRC-6216-120-15

AMARR COMPANY  
165 CARRIAGE COURT WINSTON-SALEM, N.C. 27105

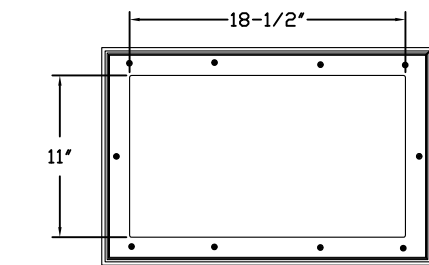
SHEET 1 OF 3

# GLAZING OPTION CROSS SECTION

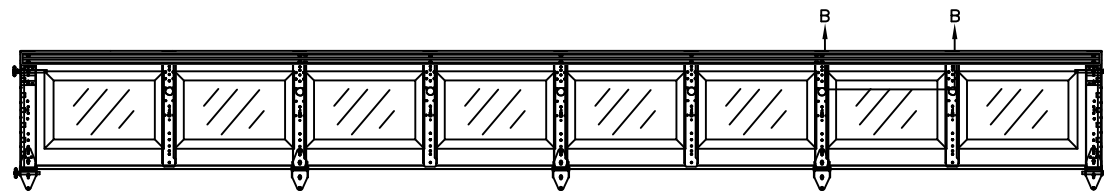
GLAZING NOT AVAILABLE IN WIND-BORNE DEBRIS REGION  
GLAZING MEETS ASTM E1300-04



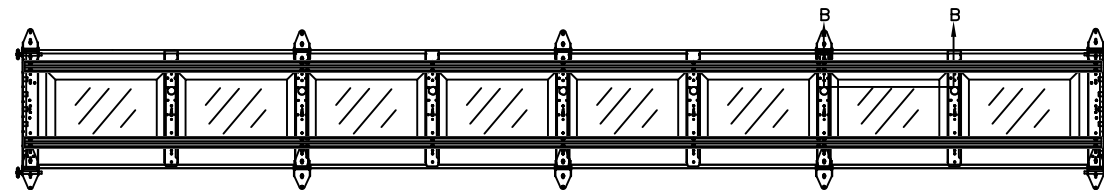
SECTION B-B



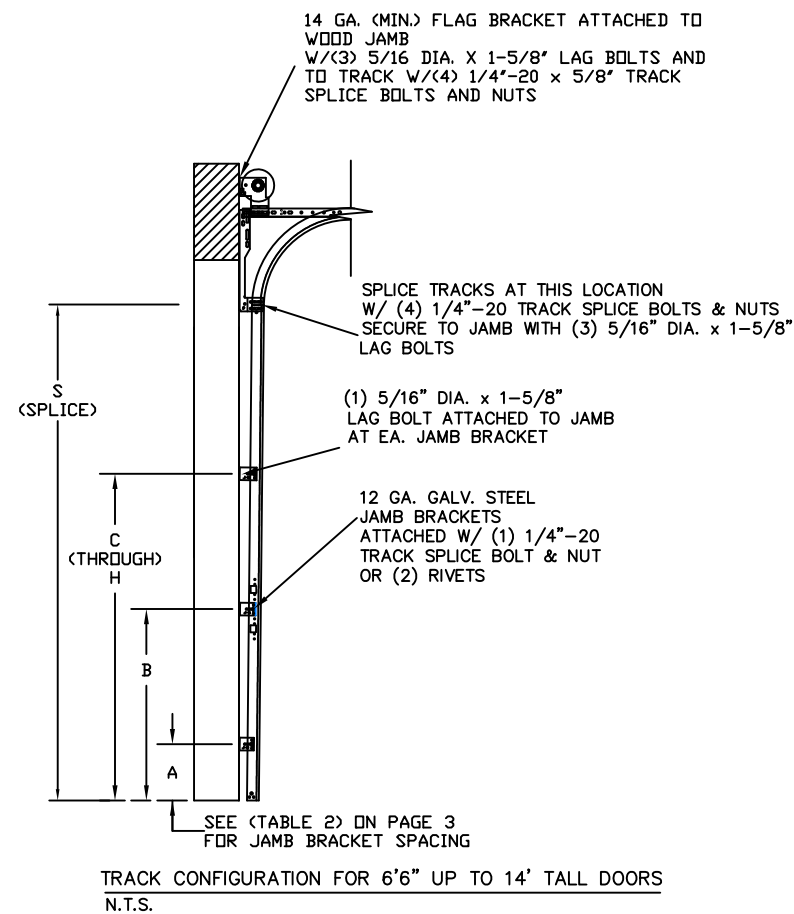
SHORT PANEL GLAZING FASTENER DETAIL  
N.T.S.



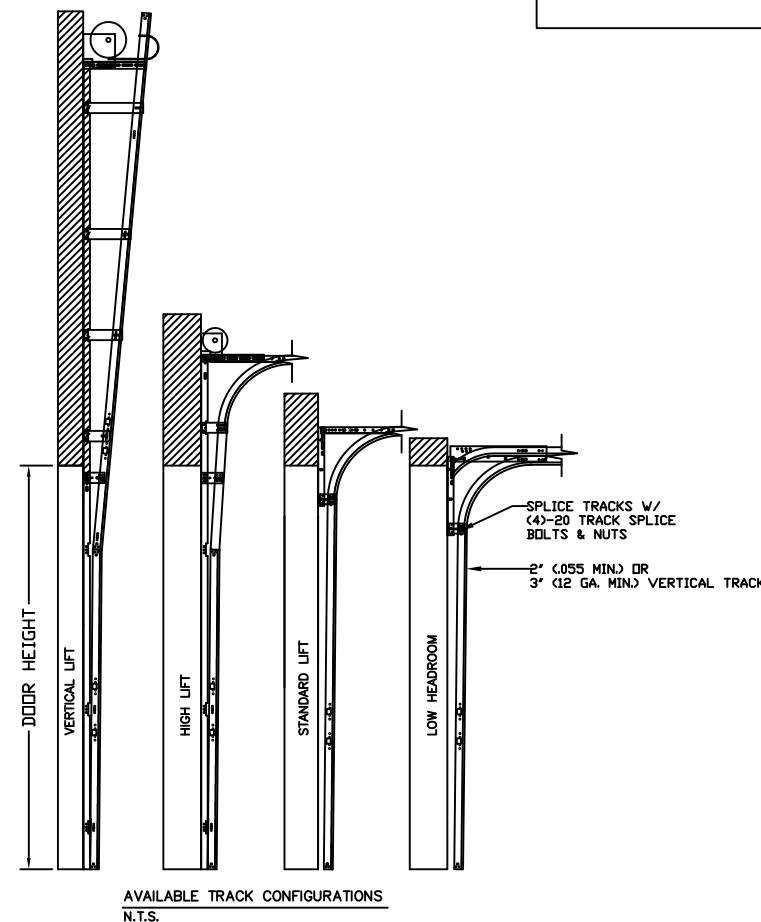
OPTIONAL SHORT PANEL TOP GLAZED SECTION (STRUT AND STILE LAYOUT)



OPTIONAL SHORT PANEL INTERMEDIATE GLAZED SECTION (STRUT AND STILE LAYOUT)



TRACK CONFIGURATION FOR 6'6" UP TO 14' TALL DOORS  
N.T.S.

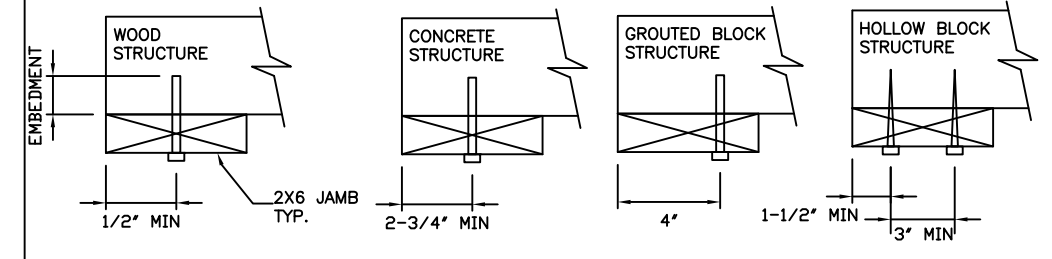


AVAILABLE TRACK CONFIGURATIONS  
N.T.S.

# WOOD JAMB ATTACHMENT TO STRUCTURE (OPTIONAL)

TABLE 4

- 2 X 6 VERTICAL JAMB ATTACHMENT TO WOOD FRAME STRUCTURE  
5/16" X 3" LAG SCREWS STARTING 6" FROM ENDS  
THEN 24" O.C. (1 1/2" EMBEDMENT)
  - 2 X 6 VERTICAL JAMB ATTACHMENT TO 2,000 PSI CONCRETE  
HILTI KWIK BOLT 3/8" X 4" STARTING 6" FROM ENDS  
THEN 24" O.C. (2 1/2" EMBEDMENT)  
HILTI SLEEVE ANCHOR 3/8" X 2-3/4" STARTING 6" FROM ENDS  
THEN 24" O.C. (1 1/4" EMBEDMENT)  
ITW/RAMSET REDHEAD (TRU-BOLT) 3/8" X 4" STARTING 6" FROM ENDS  
THEN 24" O.C. (2 1/2" EMBEDMENT)
  - 2 X 6 VERTICAL JAMB ATTACHMENT TO HOLLOW C-90 BLOCK  
SIMPSON 1/4" X 3" TITEN SCREWS STARTING 6" FROM ENDS,  
USE PAIRS OF FASTENERS (3" APART)  
AT 16" O.C. (1 1/2" EMBEDMENT)  
HILTI 1/4" X 2-3/4" KWIK-CON II+ SCREWS STARTING 6" FROM ENDS,  
USE PAIRS OF FASTENERS (3" APART) AT 16" O.C. (1 1/4" EMBEDMENT)
  - 2 X 6 VERTICAL JAMB ATTACHMENT TO GROUTED C-90 BLOCK (2000 PSI GROUT)  
HILTI SLEEVE ANCHOR 3/8" X 2-3/4" STARTING 6" FROM ENDS  
THEN 24" O.C. (1 1/4" EMBEDMENT)  
(OR, USE FASTENERS FOR HOLLOW C-90 BLOCK)
- \*LAGS AND BOLTS CAN BE COUNTERSUNK TO PROVIDE A FLUSH MOUNTING SURFACE.  
\*PREPARATION OF WOOD JAMBS BY OTHERS



REV	DESCRIPTION OF REVISIONS	DATE	BY
A	ADDED HERITAGE MODEL/DRAWING UPDATES	3/1/22	RLR

MAX SIZE  
16' x 14'

DESIGN LOADS  
+21.8 PSF  
-24.5 PSF

TEST LOADS  
(1.5 x DESIGN LOADS)  
+32.7 PSF  
-36.8 PSF

STATE OF TEXAS  
Professional Engineer  
THOMAS L. SHELMERDINE  
85829  
LICENSED PROFESSIONAL ENGINEER

This document has been digitally signed & sealed by Thomas L. Shelmerdine, PE on the date shown. Printed copies of this document are not considered signed & sealed, and the signature must be verified on any electronic copies.

Thomas L. Shelmerdine, PE (TX PE #85829)  
Structural Solutions, PA (TX Firm #F-004063)  
5921-G W. Friendly Ave., Greensboro, NC 27410 TX

Amarr

MODEL #625 AMARR LINCOLN 1000, 2000  
MODEL #675 AMARR HILLCREST 1000, 2000  
MODEL #950 AMARR HERITAGE 1000, 2000

SIZE	DRAWN BY	DATE	DRAWING NUMBER
B	RLR	02/18/21	IRC-6216-120-15
	CHECKED BY	DATE	
	RLR	02/18/21	

AMARR COMPANY  
165 CARRIAGE COURT WINSTON-SALEM, N.C. 27105

SHEET 2 OF 3

TABLE 1

DOOR HEIGHT	SECTION HEIGHTS							
	Btm	#2	#3	#4	#5	#6	#7	#8
14' 0"	21"	21"	21"	21"	21"	21"	21"	21"
13' 6"	21"	21"	21"	21"	21"	18"	18"	21"
13' 0"	21"	21"	21"	18"	18"	18"	18"	21"
12' 6"	21"	18"	18"	18"	18"	18"	18"	21"
12' 0"	21"	21"	21"	21"	21"	18"	21"	
11' 6"	21"	21"	21"	18"	18"	18"	21"	
11' 0"	21"	18"	18"	18"	18"	18"	21"	
10' 6"	21"	21"	21"	21"	21"	21"		
10' 0"	21"	21"	21"	18"	18"	21"		
9' 6"	21"	18"	18"	18"	18"	21"		
9' 0"	18"	18"	18"	18"	18"	18"		
8' 6"	21"	21"	21"	18"	21"			
8' 0"	21"	18"	18"	18"	21"			
7' 6"	18"	18"	18"	18"	18"			
7' 0"	21"	21"	21"	21"				
6' 6"	21"	18"	18"	21"				

TABLE 2

DOOR HEIGHT	TRACK ATTACHMENT								SPLICE
	A	B	C	D	E	F	G	H	
6' 6"	10"	21"	39"	57"					70"
7'	10"	21"	42"	63"					76"
7' 6"	10"	18"	36"	54"	72"				82"
8'	10"	21"	39"	57"	75"				88"
8' 6"	10"	21"	42"	63"	81"				94"
9'	10"	18"	36"	54"	72"	90"			100"
9' 6"	10"	21"	39"	57"	75"	93"			106"
10'	10"	21"	42"	63"	81"	99"			112"
10' 6"	10"	21"	42"	63"	84"	105"			118"
11'	10"	21"	39"	57"	75"	93"	111"		124"
11' 6"	10"	21"	42"	63"	81"	99"	117"		130"
12'	10"	21"	42"	63"	84"	105"	123"		136"
12' 6"	10"	21"	39"	57"	75"	93"	111"	129"	142"
13'	10"	21"	42"	63"	81"	99"	117"	135"	148"
13' 6"	10"	21"	42"	63"	84"	105"	123"	141"	154"
14'	10"	21"	42"	63"	84"	105"	126"	147"	160"

ALL TRACK AND ATTACHMENT SPACING +/-2" ALLOWED WITH SYP OR SPF NO. 2 OR BETTER ONLY

TABLE 3

Section Width (ft)	Panel Type	Center Stile Locations (Measured from Left Edge)							Max Design Loads Allowed	
		1st (in)	2st (in)	3rd (in)	4th (in)	5th (in)	6th (in)	7th (in)	Positive (PSF)	Negative (PSF)
10' 0"	Short	25.22	48.41	71.59	94.78				29.2	32.8
10' 0"	Bead Board	30.63	60.00	89.38					34.8	39.2
12' 0"	Short	25.62	48.81	72.00	95.19	118.38			29.0	32.6
12' 0"	Bead Board	24.63	48.31	72.00	95.69	119.38			29.0	32.6
12' 2"	Short	26.27	49.64	73.00	96.36	119.73			28.6	32.2
12' 2"	Bead Board	25.13	49.06	73.00	96.94	120.88			28.6	32.2
12' 4"	Short	27.27	50.64	74.00	97.36	120.73			28.2	31.7
12' 4"	Bead Board	25.63	49.81	74.00	98.19	122.38			28.2	31.7
12' 6"	Short	26.34	50.67	75.00	99.33	123.66			27.9	31.3
12' 6"	Bead Board	26.13	50.56	75.00	99.44	123.88			27.9	31.3
12' 8"	Short	27.34	51.67	76.00	100.33	124.66			27.5	30.9
12' 8"	Bead Board	26.63	51.31	76.00	100.69	125.38			27.5	30.9
12' 10"	Short	27.50	52.25	77.00	101.75	126.50			27.1	30.5
12' 10"	Bead Board	27.13	52.06	77.00	101.94	126.88			27.1	30.5
13' 0"	Short	28.00	53.00	78.00	103.00	128.00			26.8	30.1
13' 0"	Bead Board	27.63	52.81	78.00	103.19	128.38			26.8	30.1
13' 2"	Short	29.00	54.00	79.00	104.00	129.00			26.4	29.7
13' 2"	Bead Board	28.13	53.56	79.00	104.44	129.88			26.4	29.7
13' 4"	Short	28.80	54.40	80.00	105.60	131.20			26.1	29.4
13' 4"	Bead Board	28.63	54.31	80.00	105.69	131.38			26.1	29.4
13' 6"	Short	29.80	55.40	81.00	106.60	132.20			25.8	29.0
13' 6"	Bead Board	29.13	55.06	81.00	106.94	132.88			25.8	29.0
13' 8"	Short	30.80	56.40	82.00	107.60	133.20			25.5	28.6
13' 8"	Bead Board	29.63	55.81	82.00	108.19	134.38			25.5	28.6
13' 10"	Short	31.33	57.16	83.00	108.71	134.43			25.2	28.3
13' 10"	Bead Board	30.13	56.56	83.00	109.44	135.88			25.2	28.3
14' 0"	Short	31.53	57.76	84.00	110.11	136.23			24.9	28.0
14' 0"	Bead Board	30.63	57.31	84.00	110.69	137.38			24.9	28.0
14' 2"	Short	32.69	58.85	85.00	111.41	137.83			24.6	27.6
14' 2"	Bead Board	31.13	58.06	85.00	111.94	138.88			24.6	27.6
14' 4"	Short	32.33	59.16	86.00	112.71	139.43			24.3	27.3
14' 4"	Bead Board	31.63	58.81	86.00	113.19	140.38			24.3	27.3
14' 6"	Short	32.73	59.86	87.00	114.01	141.03			24.0	27.0
14' 6"	Bead Board	32.13	59.56	87.00	114.44	141.88			24.0	27.0
14' 8"	Short	33.13	60.56	88.00	115.31	142.63			23.7	26.7
14' 8"	Bead Board	32.63	60.31	88.00	115.69	142.93			23.7	26.7
14' 10"	Short	33.53	61.26	89.00	116.61	144.23			23.5	26.4
14' 10"	Bead Board	33.13	61.06	89.00	116.94	143.91			23.5	26.4
15' 0"	Short	33.94	61.94	89.94	117.94	145.94			23.2	26.1
15' 2"	Short	33.66	62.66	90.94	119.21	148.21			22.9	25.8
15' 4"	Short	28.00	53.60	79.20	104.80	130.40	156.00		22.7	25.5
15' 6"	Short	23.44	46.62	69.81	93.00	116.19	139.38	162.56	22.5	25.2
15' 6"	Bead Board	24.63	47.42	70.21	93.00	115.79	138.58	161.37	22.5	25.2
15' 8"	Short	24.44	47.62	70.81	94.00	117.19	140.38	163.56	22.2	25.0
15' 8"	Bead Board	25.03	48.02	71.01	94.00	116.99	139.98	162.97	22.2	25.0
15' 10"	Short	25.44	48.62	71.81	95.00	118.19	141.38	164.56	22.0	24.7
15' 10"	Bead Board	25.43	48.62	71.81	95.00	118.19	141.38	164.57	22.0	24.7
16' 0"	Short	26.44	49.62	72.81	96.00	119.19	142.38	165.56	21.8	24.5
16' 0"	Bead Board	24.63	48.42	72.21	96.00	119.79	143.58	167.37	21.8	24.5

^ Stiles do not need to be hinged

\*CONTACT ENGINEERING FOR SIZES NOT LISTED

TABLE 4

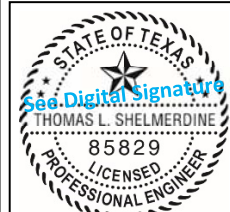
SECTION	STRUT SIZE
8TH	3"
7TH	3"
6TH	3"
5TH	3"
4TH	3"
3RD	3"
2ND	3"
BOTTOM	3"

REV	DESCRIPTION OF REVISIONS	DATE	BY
A	ADDED HERITAGE MODEL/DRAWING UPDATES	3/1/22	RLR

MAX SIZE  
16' x 14'

DESIGN LOADS  
+21.8 PSF  
-24.5 PSF


TEST LOADS  
(1.5 x DESIGN LOADS)  
+32.7 PSF  
-36.8 PSF



This document has been digitally signed & sealed by Thomas L. Shelmerdine, PE on the date shown. Printed copies of this document are not considered signed & sealed, and the signature must be verified on any electronic copies.

Thomas L. Shelmerdine, PE (TX PE #85829)  
Structural Solutions, PA (TX Firm #F-004063)  
5921-G W. Friendly Ave., Greensboro, NC 27410

**TX**



**MODEL #625 AMARR LINCOLN 1000, 2000**  
**MODEL #675 AMARR HILLCREST 1000, 2000**  
**MODEL #950 AMARR HERITAGE 1000, 2000**

SIZE	DRAWN BY RLR	DATE 02/18/21	DRAWING NUMBER
B	CHECKED BY RLR	DATE 02/18/21	IRC-6216-120-15

AMARR COMPANY  
165 CARRIAGE COURT WINSTON-SALEM, N.C. 27105

SHEET 3 OF 3