

NOTE: FOR STRUT SCHEDULE SEE TABLE 4 ON PAGE 3

THE METHOD OF TESTING WAS IN SUBSTANTIAL CONFORMANCE WITH THE PROCEDURE DESCRIBED IN ASTM E330 AND ANSI/DASMA 108. THE PRESSURES SHOWN ON THE DRAWINGS WERE CALCULATED USING ASCE 7-16 WITH THE FOLLOWING PARAMETERS (5 FEET OF DOOR WIDTH IN THE END ZONE, ROOF AT ANY SLOPE):

WIND SPEED (MPH)	215	195	185	177	170
EXPOSURE LEVEL	B	C	C	D	D
MEAN ROOF HEIGHT	30'	15'	25'	15'	25'

- SPECIFICATIONS AND NOTES
- ALL THE LOAD FROM THE DOOR IS TRANSFERRED TO THE VERTICAL TRACK, FROM THE TRACK THE LOAD IS TRANSFERRED TO THE VERTICAL JAMBS. THE HORIZONTAL JAMB OR HEADER RECEIVES NO PORTION OF THE LOAD TRANSFERRED FROM THE DOOR.
 - EACH VERTICAL JAMBS RECEIVES MAXIMUM DESIGN LOADS OF: +203.9 LBS/FT & -230.4 LBS/FT
 - DOORS AND HARDWARE WILL BE DESIGNED, MANUFACTURED AND INSTALLED WITH STANDARDS AS SET FORTH BY DASMA.
 - DOOR SECTIONS SHALL BE 25 GA. MIN. (.019") ROLLED FORMED LIGHT COMMERCIAL QUALITY
 - SUPPORTING STRUCTURAL ELEMENTS SHALL BE DESIGNED BY A REGISTERED PROFESSIONAL ENGINEER FOR WIND LOADS INDICATED ON THIS DRAWING IN ADDITION TO OTHER LOADINGS.
 - REFER TO TABLES ON PAGE 3 FOR ADDITIONAL DOOR WIDTHS AND THEIR DESIGN PRESSURES
 - DOOR IS MANUFACTURED AND TESTED IN ACCORDANCE WITH THE 2018 IRC/IBC

REV	DESCRIPTION OF REVISIONS	DATE	BY
A	ADDED HERITAGE MODEL/DRAWING UPDATES	3/1/22	RLR

MAX SIZE
9' x 14'

DESIGN LOADS
+45.3 PSF
-51.2 PSF

TEST LOADS
+68.0 PSF
-76.8 PSF

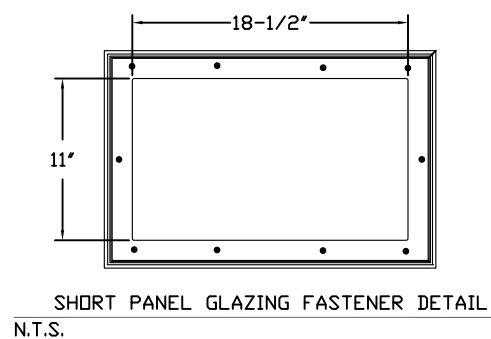
This document has been digitally signed & sealed by Thomas L. Shelmerdine, PE on the date shown. Printed copies of this document are not considered signed & sealed, and the signature must be verified on any electronic copies.

Thomas L. Shelmerdine, PE (TX PE #85829)
Structural Solutions, PA (TX Firm #F-004063)
5921-G.W. Friendly Ave., Greensboro, NC 27410 TX

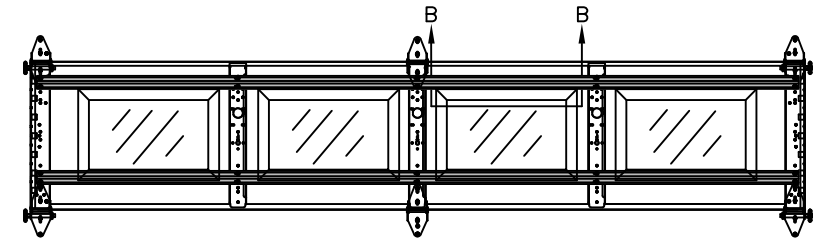
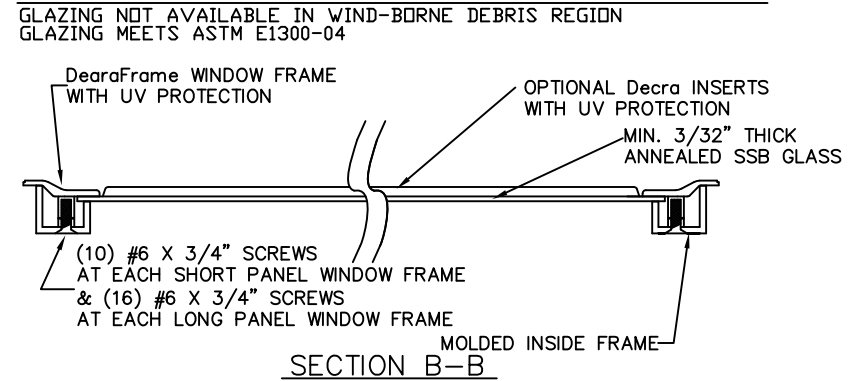


MODEL #625 AMARR LINCOLN 1000, 2000
MODEL #675 AMARR HILLCREST 1000, 2000
MODEL #950 AMARR HERITAGE 1000, 2000

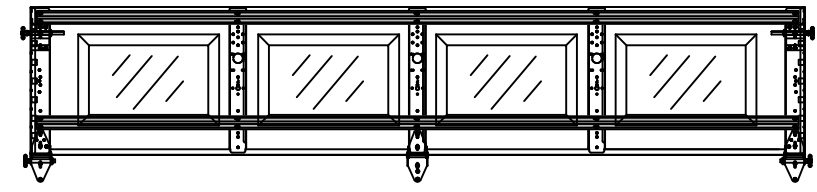
SIZE	DRAWN BY	DRC	DATE	12/26/19	DRAWING NUMBER
B	CHECKED BY	DLJ	DATE	01/03/20	IRC-6209-169-15
AMARR COMPANY 165 CARRIAGE COURT WINSTON-SALEM, N.C. 27105					SHEET 1 OF 3



GLAZING OPTION CROSS SECTION



OPTIONAL SHORT PANEL INTERMEDIATE GLAZED SECTION LAYOUT
N.T.S.



OPTIONAL SHORT PANEL TOP GLAZED SECTION LAYOUT
N.T.S.

WOOD JAMB ATTACHMENT TO STRUCTURE (OPTIONAL)

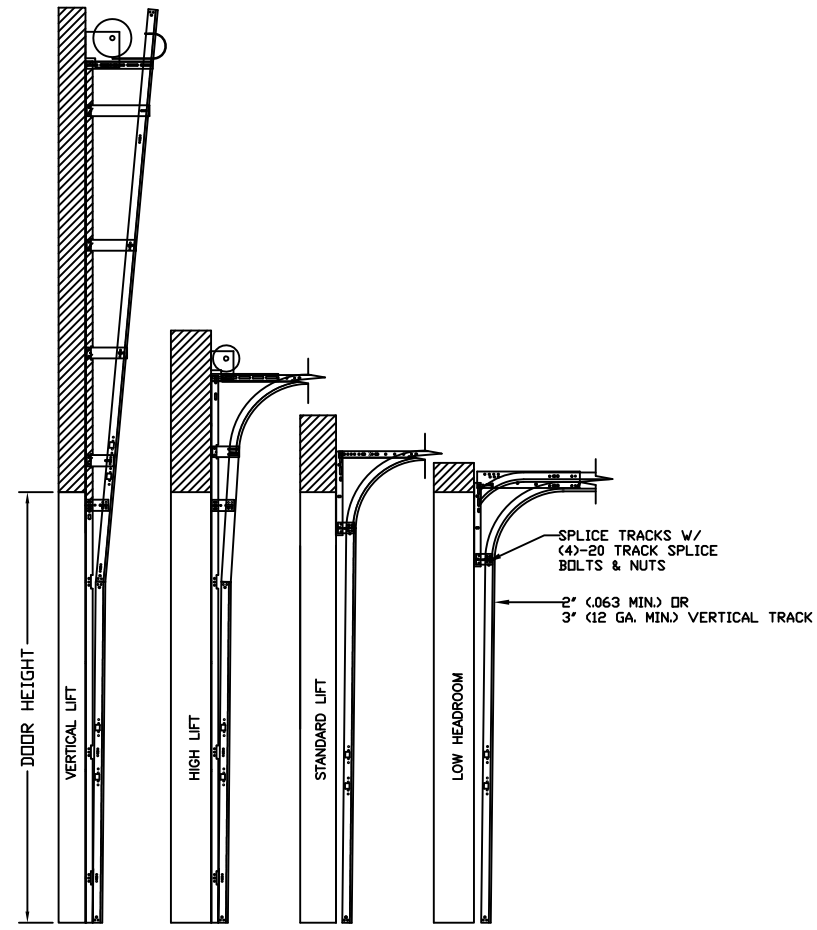
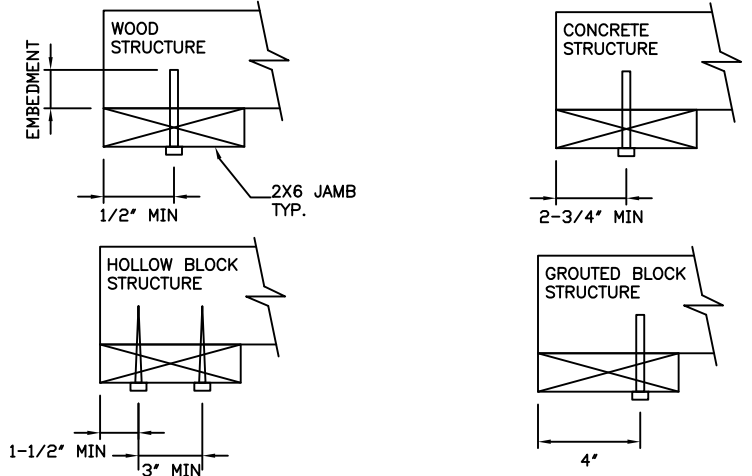
2 X 6 VERTICAL JAMB ATTACHMENT TO WOOD FRAME STRUCTURE
5/16" X 3" LAG SCREWS STARTING 6" FROM ENDS
THEN 24" O.C. (1 1/2" EMBEDMENT)

2 X 6 VERTICAL JAMB ATTACHMENT TO 2,000 PSI CONCRETE
HILTI KWIK BOLT 3/8" X 4" STARTING 6" FROM ENDS
THEN 24" O.C. (2 1/2" EMBEDMENT)
HILTI SLEEVE ANCHOR 3/8" X 2-3/4" STARTING 6" FROM ENDS
THEN 20" O.C. (1 1/4" EMBEDMENT)
ITW/RAMSET REDHEAD (TRU-BOLT) 3/8" X 4" STARTING 6" FROM ENDS
THEN 24" O.C. (2 1/2" EMBEDMENT)

2 X 6 VERTICAL JAMB ATTACHMENT TO HOLLOW C-90 BLOCK (1900 PSI MIN)
SIMPSON 1/4" X 3" TITEN SCREWS STARTING 6" FROM ENDS,
USE PAIRS OF FASTENERS (3" APART)
AT 16" O.C. (1 1/2" EMBEDMENT)
HILTI 1/4" X 2-3/4" KWIK-CON II+ SCREWS STARTING 6" FROM ENDS,
USE PAIRS OF FASTENERS (3" APART) AT 16" O.C. (1 1/4" EMBEDMENT)

2 X 6 VERTICAL JAMB ATTACHMENT TO GROUTED C-90 BLOCK (2000 PSI GROUT)
HILTI SLEEVE ANCHOR 3/8" X 2-3/4" STARTING 6" FROM ENDS
THEN 24" O.C. (1 1/4" EMBEDMENT)
(OR, USE FASTENERS FOR HOLLOW C-90 BLOCK)

*LAGS AND BOLTS CAN BE COUNTERSUNK TO PROVIDE A FLUSH MOUNTING SURFACE.
*PREPARATION OF WOOD JAMBS BY OTHERS



AVAILABLE TRACK CONFIGURATIONS
N.T.S.

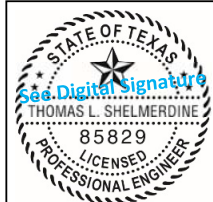
REV	DESCRIPTION OF REVISIONS	DATE	BY
A	ADDED HERITAGE MODEL/DRAWING UPDATES	3/1/22	RLR

MAX SIZE
9' x 14'

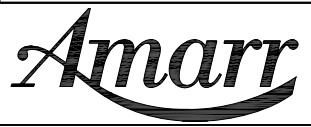
DESIGN LOADS
+45.3 PSF
-51.2 PSF

TEST LOADS
+68.0 PSF
-76.8 PSF

This document has been digitally signed & sealed by Thomas L. Shelmerdine, PE on the date shown. Printed copies of this document are not considered signed & sealed, and the signature must be verified on any electronic copies.



Thomas L. Shelmerdine, PE (TX PE #85829)
Structural Solutions, PA (TX Firm #F-004063)
5921-G W. Friendly Ave., Greensboro, NC 27410 TX



MODEL #625 AMARR LINCOLN 1000, 2000
MODEL #675 AMARR HILLCREST 1000, 2000
MODEL #950 AMARR HERITAGE 1000, 2000

SIZE	DRAWN BY	DRC	DATE	12/26/19	DRAWING NUMBER
B	CHECKED BY	DLJ	DATE	01/03/20	IRC-6209-169-15

AMARR COMPANY
165 CARRIAGE COURT WINSTON-SALEM, N.C. 27105

SHEET 2 OF 3

TABLE 1

DOOR HEIGHT	SECTION HEIGHTS							
	Btm	#2	#3	#4	#5	#6	#7	#8
14' 0"	21"	21"	21"	21"	21"	21"	21"	21"
13' 6"	21"	21"	21"	21"	21"	18"	18"	21"
13' 0"	21"	21"	21"	18"	18"	18"	18"	21"
12' 6"	21"	18"	18"	18"	18"	18"	18"	21"
12' 0"	21"	21"	21"	21"	21"	18"	21"	
11' 6"	21"	21"	21"	18"	18"	18"	21"	
11' 0"	21"	18"	18"	18"	18"	18"	21"	
10' 6"	21"	21"	21"	21"	21"	21"		
10' 0"	21"	21"	21"	18"	18"	21"		
9' 6"	21"	18"	18"	18"	18"	21"		
9' 0"	18"	18"	18"	18"	18"	18"		
8' 6"	21"	21"	21"	18"	21"			
8' 0"	21"	18"	18"	18"	21"			
7' 6"	18"	18"	18"	18"	18"			
7' 0"	21"	21"	21"	21"				
6' 6"	21"	18"	18"	21"				

TABLE 3

Section Width (ft)	Panel Type	Center Stile Location (Measured from Left Edge)			Max Design Loads Allowed	
					Positive (PSF)	Negative (PSF)
8' 0"	Bead Board	24.6	^48.00	71.4	50.7	57.3
8' 0"	Long	24.0	^48.00	72.0	50.7	57.3
8' 0"	Short	24.8	^48.00	71.2	50.7	57.3
8' 2"	Bead Board	25.1	^49.00	72.9	49.7	56.1
8' 2"	Long	24.5	^49.00	73.5	49.7	56.1
8' 2"	Short	25.8	^49.00	72.2	49.7	56.1
8' 4"	Bead Board	25.6	^50.00	74.4	48.7	55.0
8' 4"	Long	25.0	^50.00	75.0	48.7	55.0
8' 4"	Short	26.6	^50.00	73.4	48.7	55.0
8' 6"	Bead Board	26.1	^51.00	75.9	47.7	53.9
8' 6"	Long	25.5	^51.00	76.5	47.7	53.9
8' 6"	Short	26.7	^51.00	75.3	47.7	53.9
8' 8"	Bead Board	26.6	^52.00	77.4	46.8	52.9
8' 8"	Long	26.0	^52.00	78.0	46.8	52.9
8' 8"	Short	27.3	^52.00	76.8	46.8	52.9
8' 10"	Bead Board	27.1	^53.00	78.9	45.9	51.9
8' 10"	Long	26.5	^53.00	79.5	45.9	51.9
8' 10"	Short	28.0	^53.00	78.0	45.9	51.9
9' 0"	Bead Board	27.6	^54.00	80.4	45.3	51.2
9' 0"	Long	27.0	^54.00	81.0	45.3	51.2
9' 0"	Short	28.6	^54.00	79.4	45.3	51.2

^ HINGED STILES

TABLE 2

DOOR HEIGHT	TRACK ATTACHMENT											SPLICE S
	A	B	C	D	E	F	G	H	I	J	K	
6' 6"	10"	21"	37"	47"	63"							70"
7'	10"	21"	37"	47"	63"							76"
7' 6"	10"	18"	37"	47"	63"	73"						82"
8'	10"	21"	37"	47"	63"	73"						88"
8' 6"	10"	21"	37"	47"	63"	73"						94"
9'	10"	18"	37"	47"	63"	73"	89"					100"
9' 6"	10"	21"	37"	47"	63"	73"	89"					106"
10'	10"	21"	37"	47"	63"	73"	89"	99"				112"
10' 6"	10"	21"	37"	47"	63"	73"	89"	99"				118"
11'	10"	21"	37"	47"	63"	73"	89"	99"	115"			124"
11' 6"	10"	21"	37"	47"	63"	73"	89"	99"	115"			130"
12'	10"	21"	37"	47"	63"	73"	89"	99"	115"	125"		136"
12' 6"	10"	21"	37"	47"	63"	73"	89"	99"	115"	125"		142"
13'	10"	21"	37"	47"	63"	73"	89"	99"	115"	125"		148"
13' 6"	10"	21"	37"	47"	63"	73"	89"	99"	115"	125"	141"	154"
14'	10"	21"	37"	47"	63"	73"	89"	99"	115"	125"	141"	160"

ALL TRACK ATTACHMENTS +/- 2" ALLOWED USING SYP OR SPF NO.2 OR BETTER ONLY

TABLE 4


SECTION	STRUT SIZE
8TH	3"
	3"
7TH	3"
	3"
6TH	3"
	3"
5TH	3"
	3"
4TH	3"
	3"
3RD	3"
	3"
2ND	3"
	3"
BOTTOM	3"
	3"

REV	DESCRIPTION OF REVISIONS	DATE	BY
A	ADDED HERITAGE MODEL/DRAWING UPDATES	3/1/22	RLR

MAX SIZE
9' x 14'

DESIGN LOADS
+45.3 PSF
-51.2 PSF


TEST LOADS
+68.0 PSF
-76.8 PSF



This document has been digitally signed & sealed by Thomas L. Shelmerdine, PE on the date shown. Printed copies of this document are not considered signed & sealed, and the signature must be verified on any electronic copies.

Thomas L. Shelmerdine, PE (TX PE #85829)
Structural Solutions, PA (TX Firm #F-004063)
5921-G W. Friendly Ave., Greensboro, NC 27410

TX



MODEL #625 AMARR LINCOLN 1000, 2000
MODEL #675 AMARR HILLCREST 1000, 2000
MODEL #950 AMARR HERITAGE 1000, 2000

SIZE	DRAWN BY	DRC	DATE	12/26/19	DRAWING NUMBER
B	CHECKED BY	DLJ	DATE	01/03/20	IRC-6209-169-15
AMARR COMPANY 165 CARRIAGE COURT WINSTON-SALEM, N.C. 27105					SHEET 3 OF 3