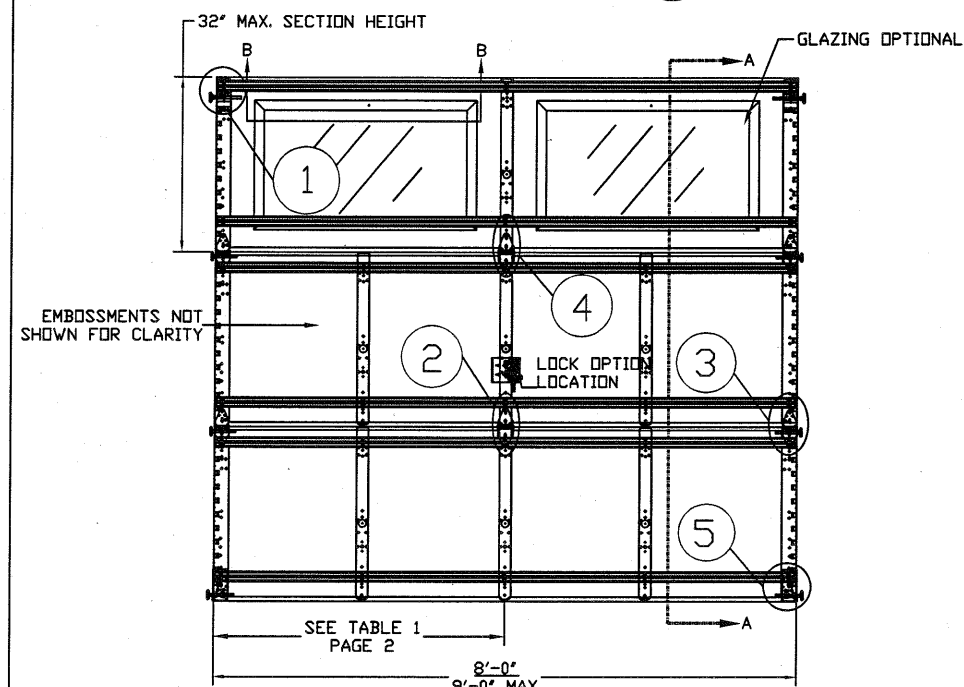
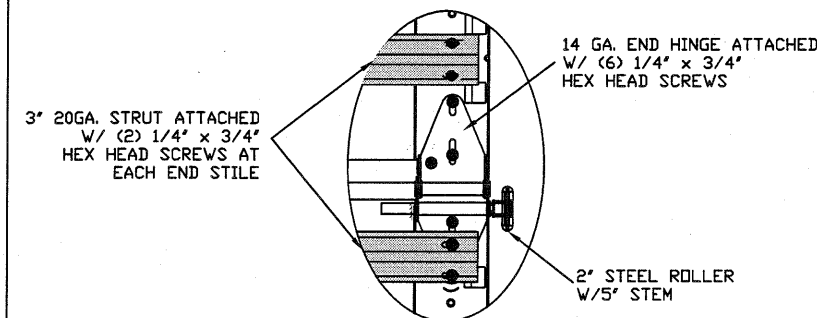


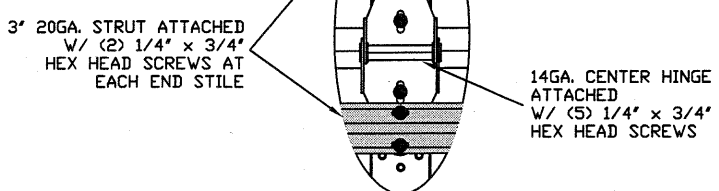
TYPICAL TOP FIXTURES  
N.T.S.



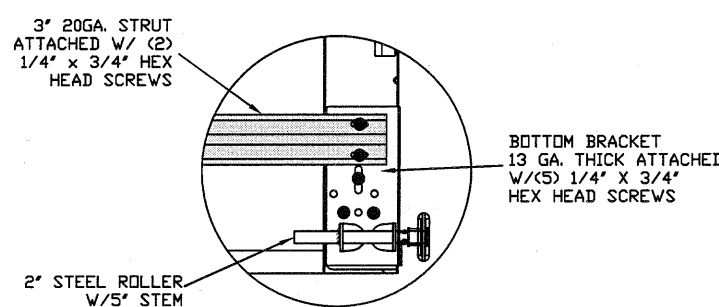
INSIDE ELEVATION  
N.T.S.



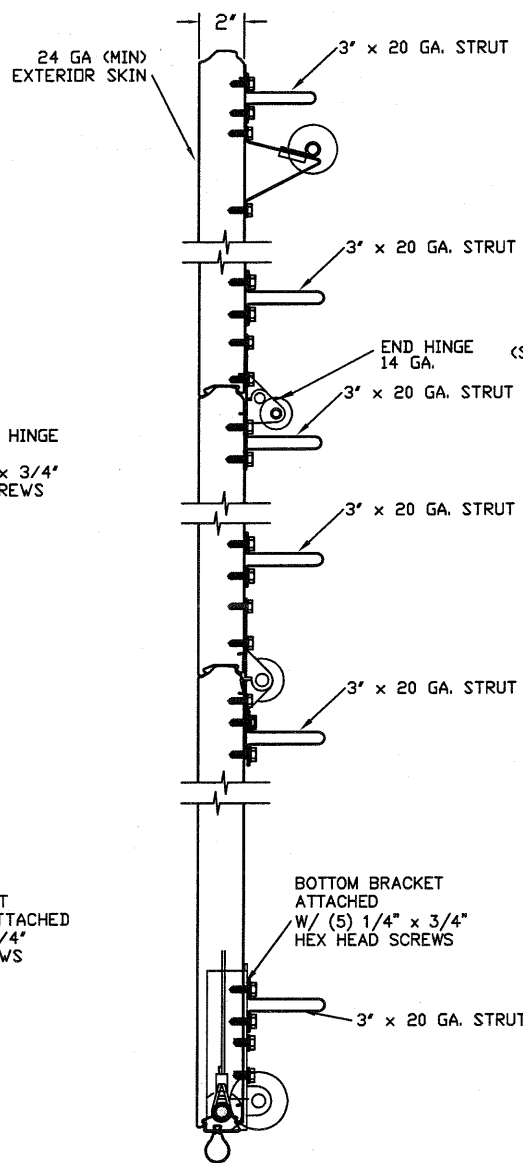
TYPICAL END HINGE  
N.T.S.



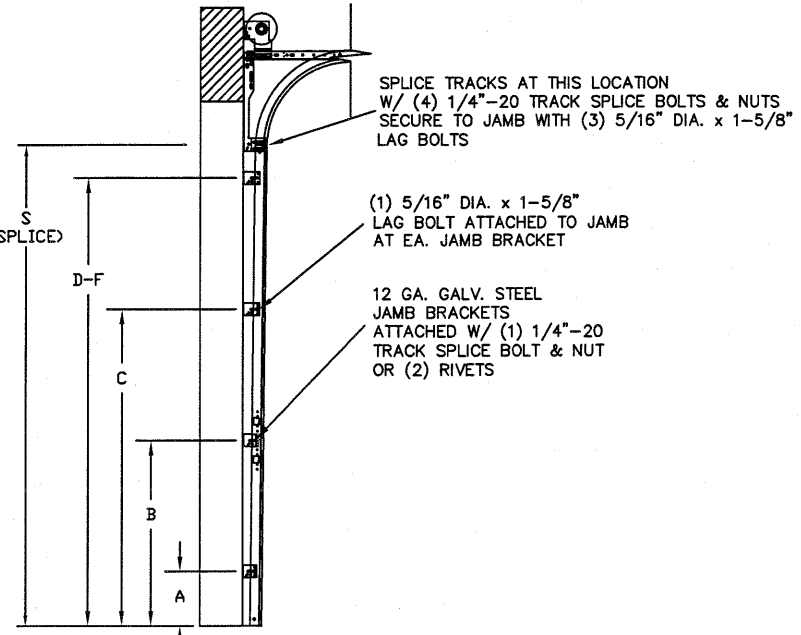
TYPICAL CENTER HINGE  
N.T.S.



TYPICAL BOTTOM BRACKET  
N.T.S.

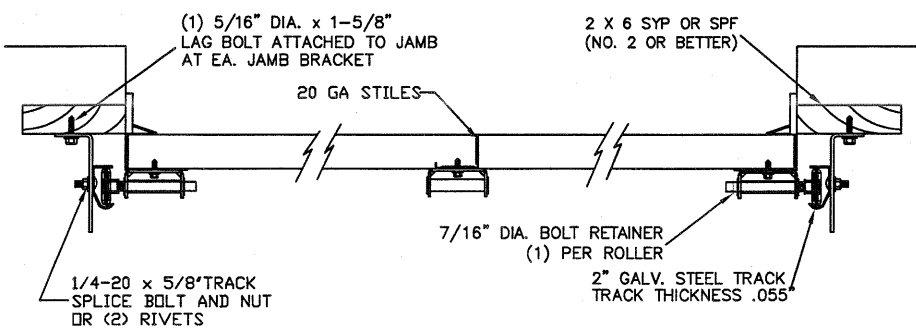


SECTION A-A (SIDE VIEW)  
N.T.S.

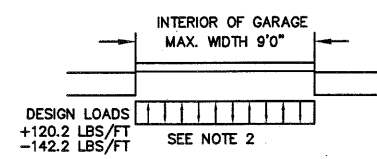


TRACK CONFIGURATION FOR 8' TALL DOORS  
N.T.S. SEE TABLE 2 PAGE 2

ALL TRACK ATTACHMENTS +/- 2\"/>



TRACK MOUNTING DETAIL  
N.T.S.



THE METHOD OF TESTING WAS IN SUBSTANTIAL CONFORMANCE WITH THE PROCEDURE DESCRIBED IN ASTM E330 AND ANSI/DASMA 108. THE PRESSURES SHOWN ON THE DRAWINGS WERE CALCULATED USING ASCE 7-16 WITH THE FOLLOWING PARAMETERS (5 FEET OF DOOR WIDTH IN THE END ZONE, ROOF AT ANY SLOPE):

WIND SPEED (MPH)	169	153	145	139	133
EXPOSURE LEVEL	B	C	C	D	D
MEAN ROOF HEIGHT	30'	15'	25'	15'	25'

- SPECIFICATIONS AND NOTES**
- ALL THE LOAD FROM THE DOOR IS TRANSFERRED TO THE VERTICAL TRACK. FROM THE TRACK THE LOAD IS TRANSFERRED TO THE VERTICAL JAMBS. THE HORIZONTAL JAMB OR HEADER RECEIVES NO PORTION OF THE LOAD TRANSFERRED FROM THE DOOR.
  - EACH VERTICAL JAMBS RECEIVES MAXIMUM DESIGN LOADS OF: +120.2 LBS/FT & -142.2 LBS/FT
  - DOORS AND HARDWARE WILL BE DESIGNED, MANUFACTURED AND INSTALLED WITH STANDARDS AS SET FORTH BY DASMA.
  - DOOR SECTIONS SHALL BE 24 GA. MIN. (.022") ROLLED FORMED LIGHT COMMERCIAL QUALITY.
  - SUPPORTING STRUCTURAL ELEMENTS SHALL BE DESIGNED BY A REGISTERED PROFESSIONAL ENGINEER FOR WIND LOADS INDICATED ON THIS DRAWING IN ADDITION TO OTHER LOADINGS.
  - DOOR IS MANUFACTURED AND TESTED IN ACCORDANCE WITH THE 2018 IRC/IBC

REV	DESCRIPTION OF REVISIONS	DATE	BY

MAX SIZE  
9' x 14'

DESIGN LOADS  
+26.7 PSF  
-31.6 PSF

TEST LOADS  
(1.5 x DESIGN LOADS)  
+40.1 PSF  
-47.4 PSF

Thomas L. Shelmerdine, PE (TX PE #85829)  
Structural Solutions, PA (TX Firm #F-004063)

STATE OF TEXAS  
THOMAS L. SHELMERDINE  
85829  
LICENSED PROFESSIONAL ENGINEER  
TX

5921-G W. Friendly Ave., Greensboro, NC 27410

**Amarr**

MODEL #500  
CLASSICA 1000, 2000

SIZE	DRAWN BY	DRC	DATE	01/06/21	DRAWING NUMBER
B	CHECKED BY	DLJ	DATE	01/18/21	IRC-5309-130-15

AMARR COMPANY  
165 CARRIAGE COURT WINSTON-SALEM, N.C. 27105

SHEET 1 OF 2

TABLE 1

Section	Center Stile Locations (Measured from Left)			Max Design Loads Allowed	
	1st (in)	2st (in)	3rd (in)	Positive (PSF)	Negative (PSF)
06' 0"	*24.6	*47.3		39.8	47.2
07' 6"	22.5	*44.9	67.4	31.9	37.7
07' 8"	22.6	*45.9	69.3	30.7	36.3
07' 10"	23.6	*46.9	70.3	30.5	36.1
08' 0"	24.6	*47.9	71.3	29.9	35.4
08' 2"	25.1	*48.9	72.8	29.3	34.7
08' 4"	25.6	*49.9	74.3	28.7	34.0
08' 6"	26.1	*50.9	75.8	28.1	33.3
08' 8"	26.6	*51.9	77.3	27.6	32.7
08' 10"	27.1	*52.9	78.8	27.1	32.0
09' 0"	27.6	*53.9	80.3	26.7	31.6

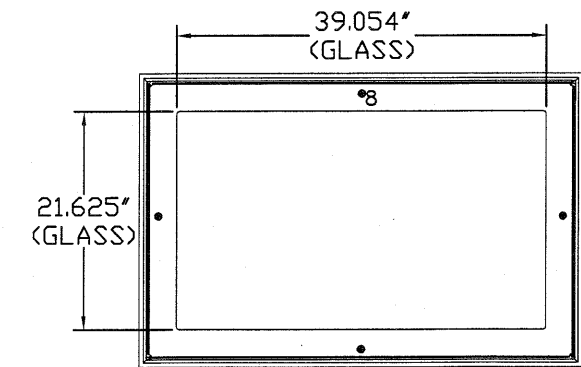
\* HINGED STILES

TABLE 2

DOOR HEIGHT	TRACK ATTACHMENT						SPLICE S
	A	B	C	D	E	F	
6' 6"	10"	34"	58"				70"
7'	10"	34"	58"				76"
7' 6"	10"	34"	58"				82"
8'	10"	34"	58"	82"			88"
8' 6"	10"	34"	58"	82"			94"
9'	10"	34"	58"	82"			100"
9' 6"	10"	34"	58"	82"			106"
10'	10"	34"	58"	82"			112"
10' 6"	10"	34"	58"	82"			118"
11'	10"	34"	58"	82"	106"		124"
11' 6"	10"	34"	58"	82"	106"		130"
12'	10"	34"	58"	82"	106"		136"
12' 6"	10"	34"	58"	82"	106"	130"	142"
13'	10"	34"	58"	82"	106"	130"	148"
13' 6"	10"	34"	58"	82"	106"	130"	154"
14'	10"	34"	58"	82"	106"	130"	160"

TABLE 3

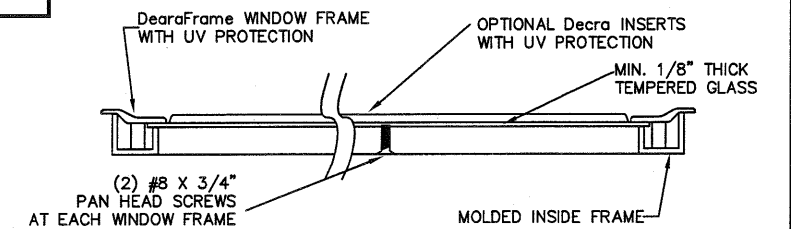
SECTION	STRUT SIZE
TOP	3"
5TH	3"
4TH	3"
3RD	3"
2ND	3"
BOTTOM	3"



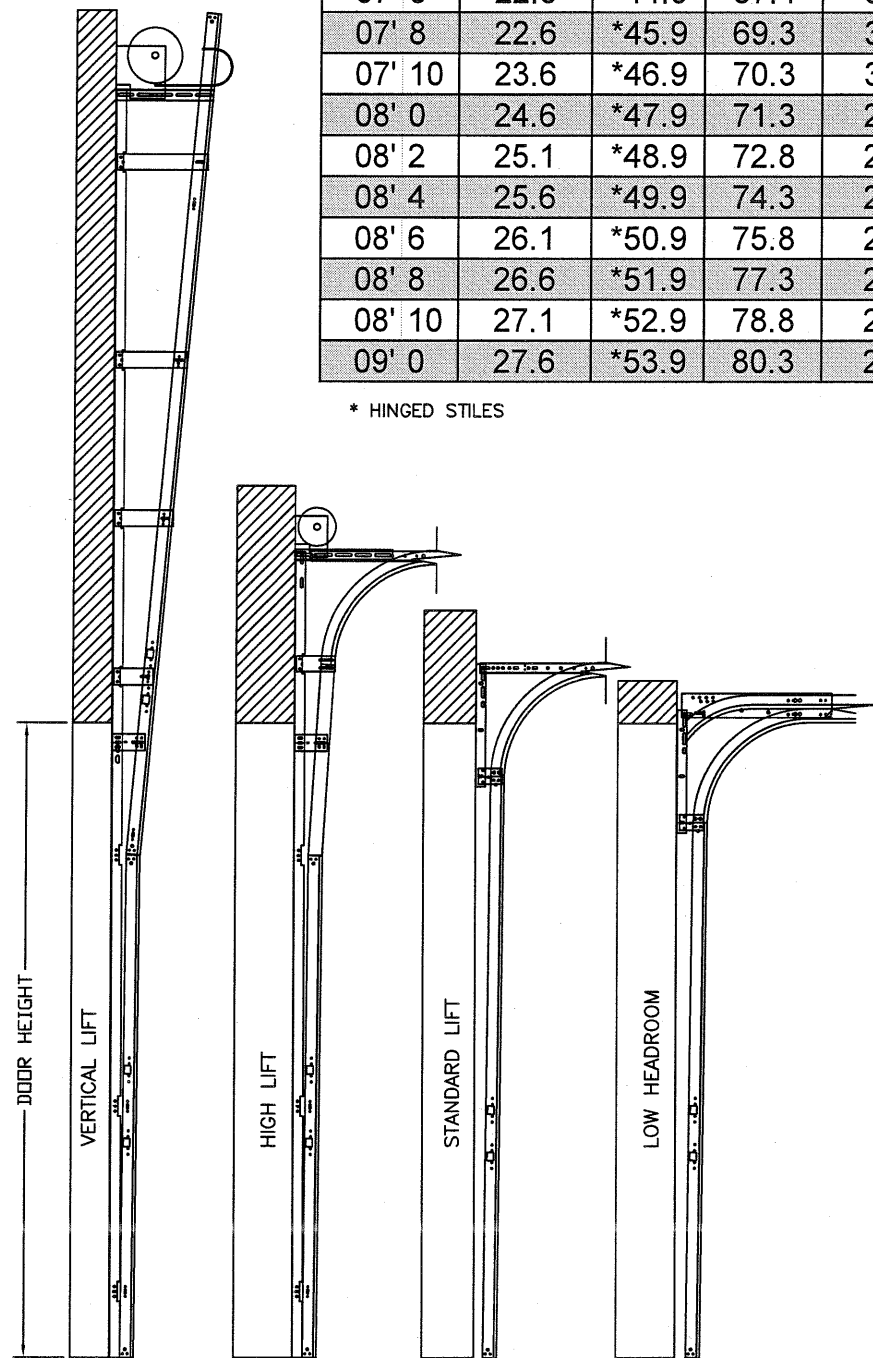
GLAZING FASTENER DETAIL  
N.T.S.

GLAZING OPTION CROSS SECTION

GLAZING NOT AVAILABLE IN WIND-BORNE DEBRIS REGION  
GLAZING MEETS ASTM E 1300-04



SECTION B-B



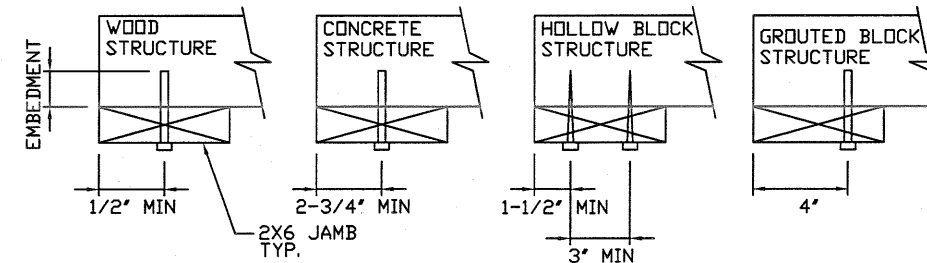
AVAILABLE TRACK CONFIGURATIONS  
N.T.S.

WOOD JAMB ATTACHMENT TO STRUCTURE

**2 X 6 VERTICAL JAMB ATTACHMENT TO WOOD FRAME STRUCTURE**  
5/16" X 3" LAG SCREWS STARTING 6" FROM ENDS THEN 24" O.C. (1 1/2" EMBEDMENT)  
**2 X 6 VERTICAL JAMB ATTACHMENT TO 2,000 PSI CONCRETE**  
HILTI KWIK BOLT 3/8" X 4" STARTING 6" FROM ENDS THEN 24" O.C. (2 1/2" EMBEDMENT)  
HILTI SLEEVE ANCHOR 3/8" X 2-3/4" STARTING 6" FROM ENDS THEN 24" O.C. (1 1/4" EMBEDMENT)  
ITW/RAMSET REDHEAD (TRU-BOLT) 3/8" X 4" STARTING 6" FROM ENDS THEN 24" O.C. (2 1/2" EMBEDMENT)  
**2 X 6 VERTICAL JAMB ATTACHMENT TO HOLLOW C-90 BLOCK**  
SIMPSON 1/4" X 3" TITEN SCREWS STARTING 6" FROM ENDS, USE PAIRS OF FASTENERS (3" APART) AT 24" O.C. (1 1/2" EMBEDMENT)  
HILTI 1/4" X 2-3/4" KWIK-CON II+ SCREWS STARTING 6" FROM ENDS, USE PAIRS OF FASTENERS (3" APART) AT 24" O.C. (1 1/4" EMBEDMENT)

**2 X 6 VERTICAL JAMB ATTACHMENT TO GROUTED C-90 BLOCK (2000 PSI GROUT)**  
HILTI SLEEVE ANCHOR 3/8" X 2-3/4" STARTING 6" FROM ENDS THEN 24" O.C. (1 1/4" EMBEDMENT) (OR, USE FASTENERS FOR HOLLOW C-90 BLOCK)

\*LAGS AND BOLTS CAN BE COUNTERSUNK TO PROVIDE A FLUSH MOUNTING SURFACE.  
\*PREPARATION OF WOOD JAMBS BY OTHERS



REV	DESCRIPTION OF REVISIONS	DATE	BY

MAX SIZE  
9' x 14'  
DESIGN LOADS  
+26.7 PSF  
-31.6 PSF  
TEST LOADS  
(1.5 x DESIGN LOADS)  
+40.1 PSF  
-47.4 PSF

Thomas L. Shelmerdine, PE (TX PE #85829)  
Structural Solutions, PA (TX Firm #F-004063)

TX  
5921-G W. Friendly Ave., Greensboro, NC 27410

**Amarr**

MODEL #500  
CLASSICA 1000, 2000

SIZE	DRAWN BY	DRC	DATE	01/06/21	DRAWING NUMBER
B	CHECKED BY	DLJ	DATE	01/18/21	IRC-5309-130-15

AMARR COMPANY  
165 CARRIAGE COURT WINSTON-SALEM, N.C. 27105

SHEET 2 OF 2