

TYPICAL TOP FIXTURES  
N.T.S.

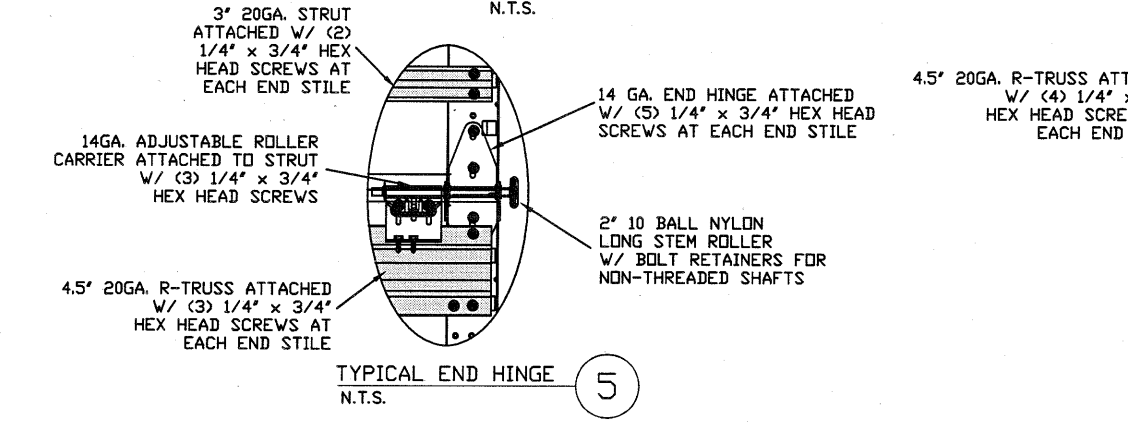
INSIDE ELEVATION  
N.T.S.

TYPICAL CENTER HINGE  
N.T.S.

GLAZED SECTION CENTER HINGE  
N.T.S.

GLAZED SECTION END HINGE  
N.T.S.

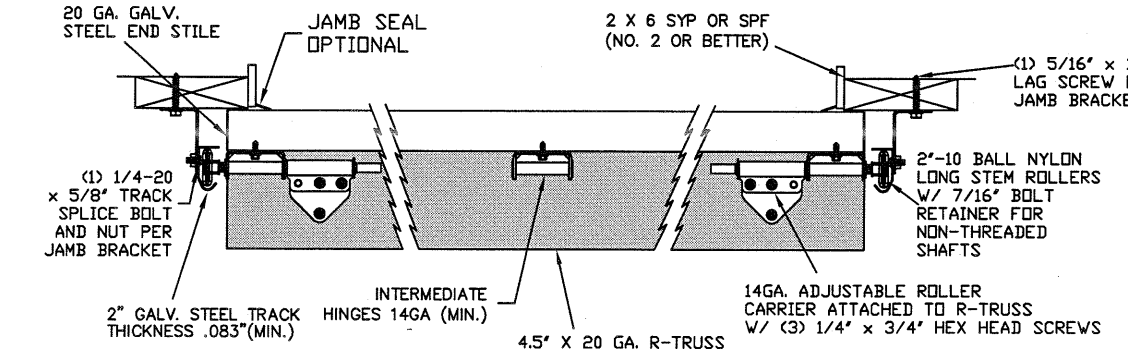
SECTION A-A (SIDE VIEW)  
N.T.S.



TYPICAL END HINGE  
N.T.S.

TYPICAL BOTTOM BRACKET  
N.T.S.

R-TRUSS SPACER  
N.T.S. GLAZED SECTION ONLY



TRACK MOUNTING DETAIL  
N.T.S.

THE METHOD OF TESTING WAS IN SUBSTANTIAL CONFORMANCE WITH THE PROCEDURE DESCRIBED IN DASMA 108 & 115, AND ASTM E330. THE PRESSURES SHOWN ON THE DRAWINGS WERE CALCULATED USING ASCE 7-16 WITH THE FOLLOWING PARAMETERS (5 FEET OF DOOR WIDTH IN THE END ZONE, ROOF AT ANY SLOPE):

WIND SPEED (MPH)	168	152	145	138	133
EXPOSURE LEVEL	B	C	C	D	D
MEAN ROOF HEIGHT	30'	15'	25'	15'	25'

REV	DESCRIPTION OF REVISIONS	DATE	BY

MAX SIZE  
16' x 14'

DESIGN LOADS  
+25.3 PSF  
-28.8 PSF

TEST LOADS  
(1.5 x DESIGN LOADS)  
+38.0 PSF  
-43.2 PSF

Thomas L. Shelmerdine, PE (TX PE #85829)  
Structural Solutions, PA (TX Firm #F-004063)

TX

5921-G.W. Friendly Ave., Greensboro, NC 27410

MODEL #3000 AMARR CLASSICA 3000

SIZE	DRAWN BY	DRC	DATE	05/28/20	DRAWING NUMBER
B	CHECKED BY	RLR	DATE	05/28/20	IRC-3316-130-24

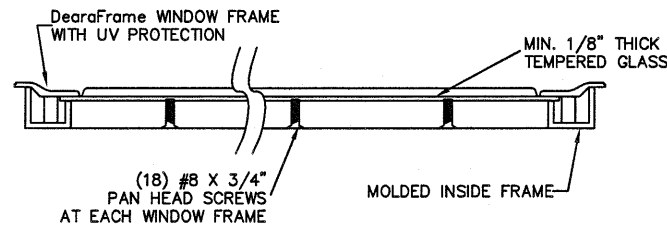
AMARR COMPANY  
165 CARRIAGE COURT WINSTON-SALEM, N.C. 27105

SHEET 1 OF 3

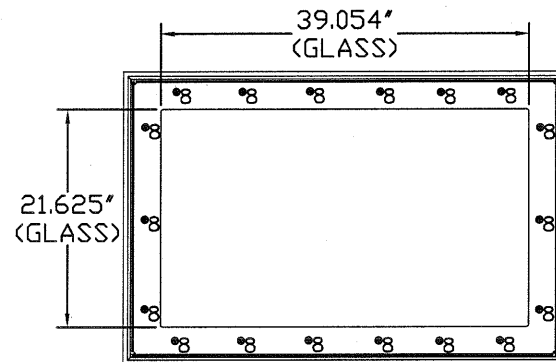
## WOOD JAMB ATTACHMENT TO STRUCTURE

### GLAZING OPTION CROSS SECTION

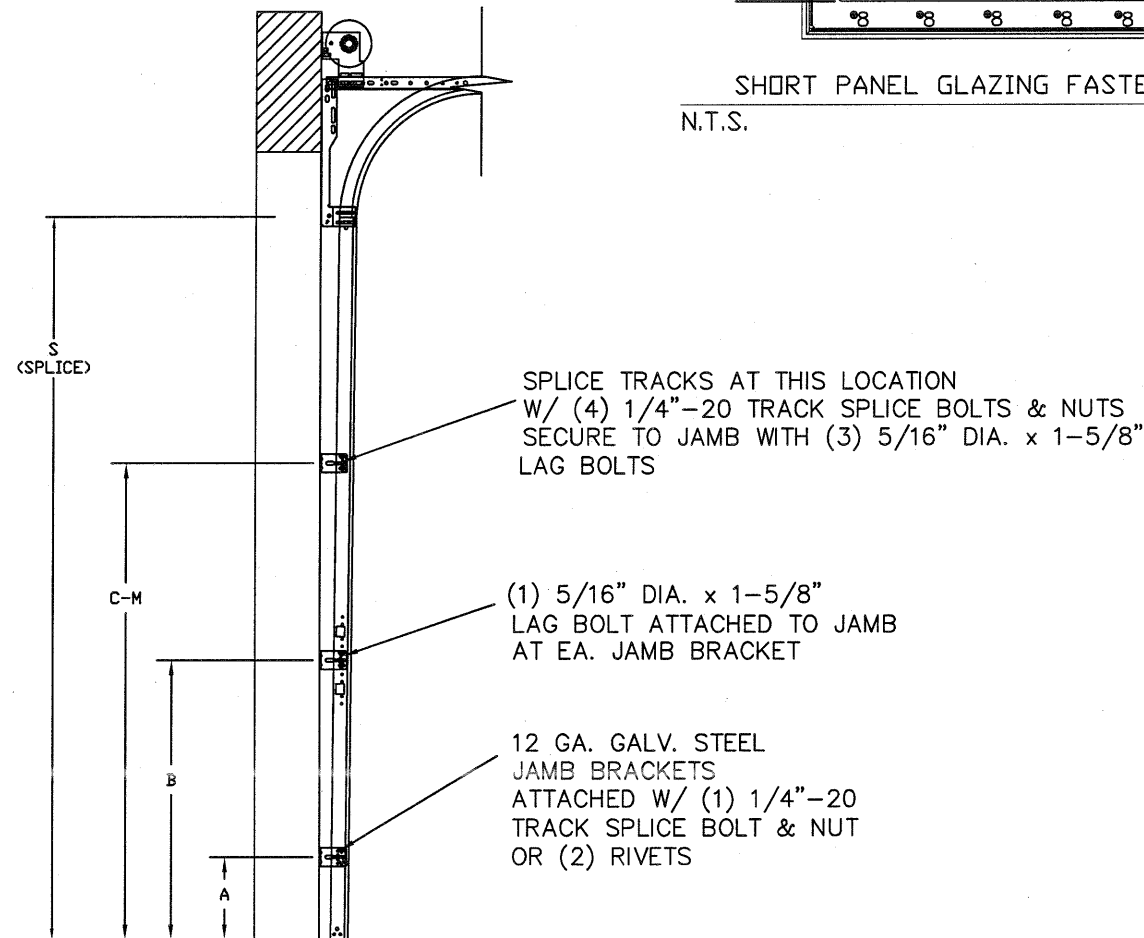
GLAZING NOT AVAILABLE IN WIND-BORNE DEBRIS REGION  
GLAZING MEETS ASTM E1300-04



SECTION B-B



SHORT PANEL GLAZING FASTENER DETAIL  
N.T.S.



TRACK CONFIGURATION FOR 8' TALL DOORS  
N.T.S. SEE TABLE 3 FOR LOCATIONS

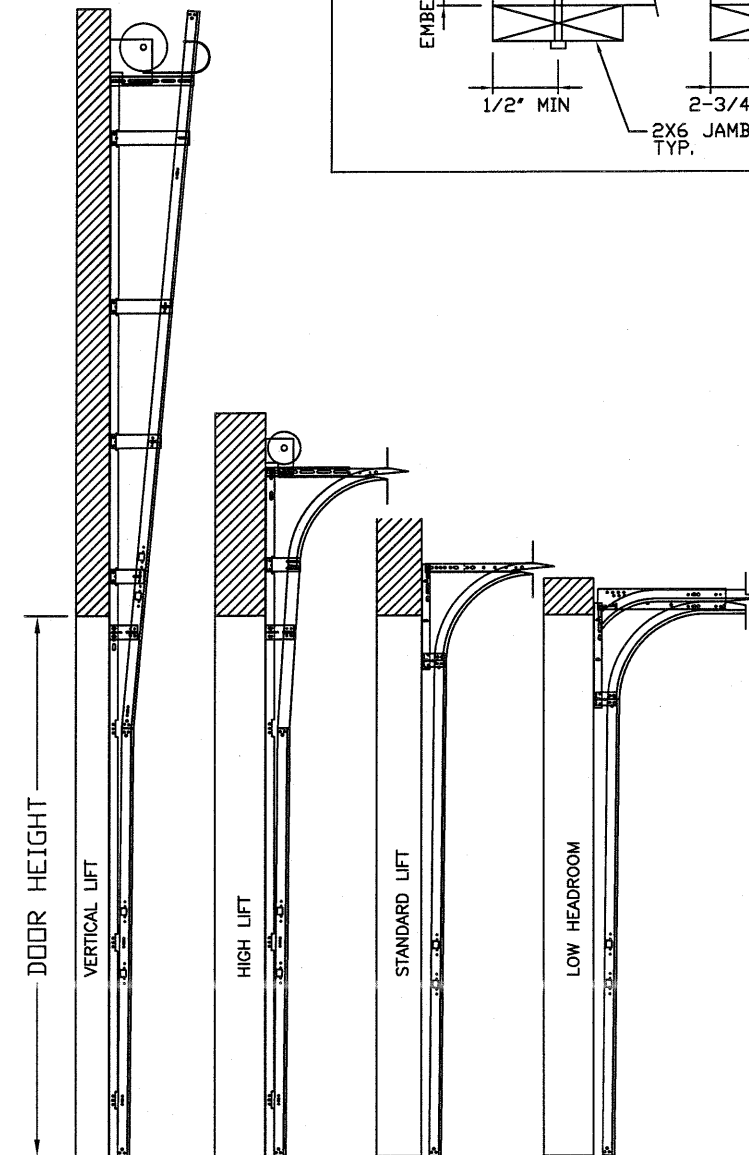
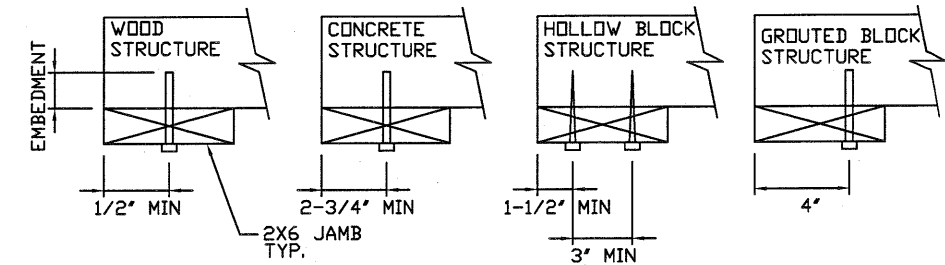
**2 X 6 VERTICAL JAMB ATTACHMENT TO WOOD FRAME STRUCTURE**  
5/16" X 3" LAG SCREWS STARTING 6" FROM ENDS THEN 24" O.C. (1 1/2" EMBEDMENT)

**2 X 6 VERTICAL JAMB ATTACHMENT TO 2,000 PSI CONCRETE**  
HILTI KWIK BOLT 3/8" X 4" STARTING 6" FROM ENDS THEN 24" O.C. (2 1/2" EMBEDMENT)  
HILTI SLEEVE ANCHOR 3/8" X 2-3/4" STARTING 6" FROM ENDS THEN 22" O.C. (1 1/4" EMBEDMENT)  
ITW/RAMSET REDHEAD (TRU-BOLT) 3/8" X 4" STARTING 6" FROM ENDS THEN 24" O.C. (2 1/2" EMBEDMENT)

**2 X 6 VERTICAL JAMB ATTACHMENT TO HOLLOW C-90 BLOCK**  
SIMPSON 1/4" X 3" TITEN SCREWS STARTING 6" FROM ENDS, USE PAIRS OF FASTENERS (3' APART) AT 16" O.C. (1 1/2" EMBEDMENT)  
HILTI 1/4" X 2-3/4" KWIK-CON II+ SCREWS STARTING 6" FROM ENDS, USE PAIRS OF FASTENERS (3' APART) AT 16" O.C. (1 1/4" EMBEDMENT)

**2 X 6 VERTICAL JAMB ATTACHMENT TO GROUTED C-90 BLOCK (2000 PSI GROUT)**  
HILTI SLEEVE ANCHOR 3/8" X 2-3/4" STARTING 6" FROM ENDS THEN 24" O.C. (1 1/4" EMBEDMENT) (OR, USE FASTENERS FOR HOLLOW C-90 BLOCK)

\*LAGS AND BOLTS CAN BE COUNTERSUNK TO PROVIDE A FLUSH MOUNTING SURFACE.  
\*PREPARATION OF WOOD JAMBS BY OTHERS



AVAILABLE TRACK CONFIGURATIONS  
N.T.S.

REV	DESCRIPTION OF REVISIONS	DATE	BY
<p>MAX SIZE 16' x 14'</p> <p>DESIGN LOADS +25.3 PSF -28.8 PSF</p> <p>TEST LOADS (1.5 x DESIGN LOADS) +38.0 PSF -43.2 PSF</p>			
		<p>TX</p>	
<p><b>Amarr</b></p>			
<p><b>MODEL #3000 AMARR CLASSICA 3000</b></p>			
SIZE	DRAWN BY DRC	DATE 05/28/20	DRAWING NUMBER
B	CHECKED BY RLR	DATE 05/28/20	IRC-3316-130-24
<p>AMARR COMPANY 165 CARRIAGE COURT WINSTON-SALEM, N.C. 27105</p>			<p>SHEET 2 OF 3</p>

5921-G.W. Friendly Ave., Greensboro, NC 27410

**SPECIFICATIONS AND NOTES**

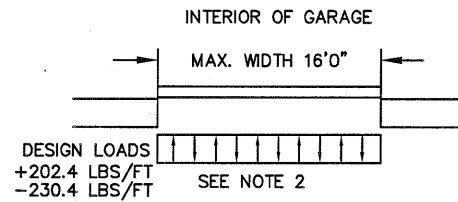
1. ALL THE LOAD FROM THE DOOR IS TRANSFERRED TO THE VERTICAL TRACK, FROM THE TRACK THE LOAD IS TRANSFERRED TO THE VERTICAL JAMBS. THE HORIZONTAL JAMB OR HEADER RECEIVES NO PORTION OF THE LOAD TRANSFERRED FROM THE DOOR.
2. EACH VERTICAL JAMBS RECEIVES MAXIMUM DESIGN LOADS OF: +202.4 LBS/FT & -230.4 LBS/FT
3. DOORS AND HARDWARE WILL BE DESIGNED, MANUFACTURED AND INSTALLED WITH STANDARDS AS SET FORTH BY DASMA.
4. DOOR SECTIONS SHALL BE 25 GA. EXTERIOR MIN. (.019"), AND 27 GA. INTERIOR MIN. (.014") ROLLED FORMED LIGHT COMMERCIAL QUALITY
5. SUPPORTING STRUCTURAL ELEMENTS SHALL BE DESIGNED BY A REGISTERED PROFESSIONAL ENGINEER FOR WIND LOADS INDICATED ON THIS DRAWING IN ADDITION TO OTHER LOADINGS.
6. DOOR IS MANUFACTURED AND TESTED IN ACCORDANCE WITH THE 2018 IRC/IBC

**TABLE 1**

SECTION	STRUT SIZE
TOP	4.5"
	3"
5TH	4.5"
	3"
4TH	4.5"
	3"
3RD	4.5"
	3"
2ND	4.5"
	3"
BOTTOM	4.5"
	4.5"

**TABLE 2**

Section	Center Stile Locations (Measured from Left Edge)				Max Design Loads Allowed		
	Width (ft)	1st (in)	2st (in)	3rd (in)	4th (in)	Positive (PSF)	Negative (PSF)
15' 6"	47.42	93.00	138.58			26.0	29.6
15' 8"	48.02	94.00	139.98			25.7	29.3
15' 10"	48.62	95.00	141.38			25.4	29.0
16' 0"	48.42	96.00	143.58			25.3	28.8



**TABLE 3**

DOOR HEIGHT	TRACK ATTACHMENT												
	A	B	C	D	E	F	G	H	I	J	K	L	M
7' 0"	3.5"	10.0"	22.0"	34"	46"	58"							
7' 6"	3.5"	10.0"	22.0"	34"	46"	58"	70"						
8' 0"	3.5"	10.0"	22.0"	34"	46"	58"	70"						
8' 6"	3.5"	10.0"	22.0"	34"	46"	58"	70"	82"					
9' 0"	3.5"	10.0"	22.0"	34"	46"	58"	70"	82"					
9' 6"	3.5"	10.0"	22.0"	34"	46"	58"	70"	82"	94"				
10' 0"	3.5"	10.0"	22.0"	34"	46"	58"	70"	82"	94"				
11' 0"	3.5"	10.0"	22.0"	34"	46"	58"	70"	82"	94"	106"			
12' 0"	3.5"	10.0"	22.0"	34"	46"	58"	70"	82"	94"	106"	118"		
13' 0"	3.5"	10.0"	22.0"	34"	46"	58"	70"	82"	94"	106"	118"	130"	
14' 0"	3.5"	10.0"	22.0"	34"	46"	58"	70"	82"	94"	106"	118"	130"	142"

ALL TRACK AND ATTACHMENT SPACING +/-2" ALLOWED WITH SYP OR SPF NO. 2 OR BETTER ONLY

REV	DESCRIPTION OF REVISIONS	DATE	BY

MAX SIZE  
16' x 14'

DESIGN LOADS  
+25.3 PSF  
-28.8 PSF

TEST LOADS  
(1.5 x DESIGN LOADS)  
+38.0 PSF  
-43.2 PSF

THOMAS L. SHELME RDINE  
85829  
LICENSED PROFESSIONAL ENGINEER  
TX

Thomas L. Shelmerdine, PE (TX PE #85829)  
Structural Solutions, PA (TX Firm #004063)

5921-G W. Friendly Ave., Greensboro, NC 27410

**MODEL #3000 AMARR CLASSICA 3000**

SIZE	DRAWN BY	DRC	DATE	05/28/20	DRAWING NUMBER
B	CHECKED BY	RLR	DATE	05/28/20	IRC-3316-130-24

AMARR COMPANY  
165 CARRIAGE COURT WINSTON-SALEM, N.C. 27105

SHEET 3 OF 3