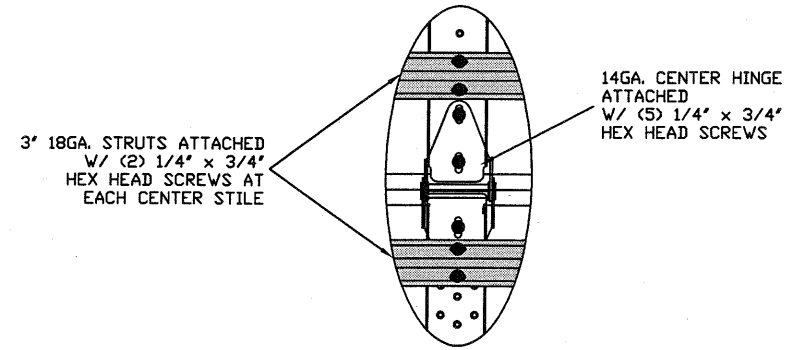
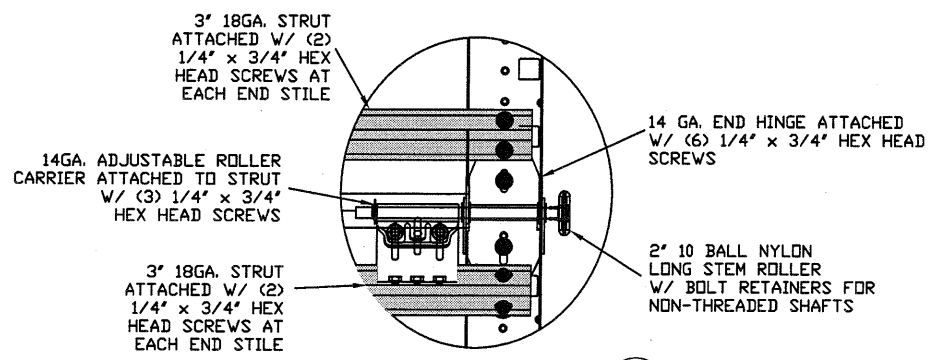


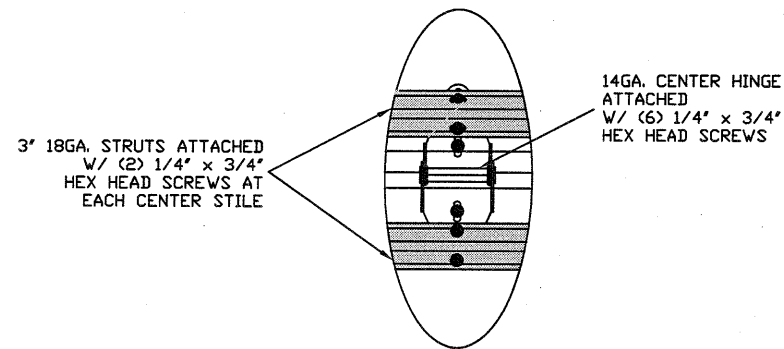
TYPICAL TOP FIXTURES
N.T.S.



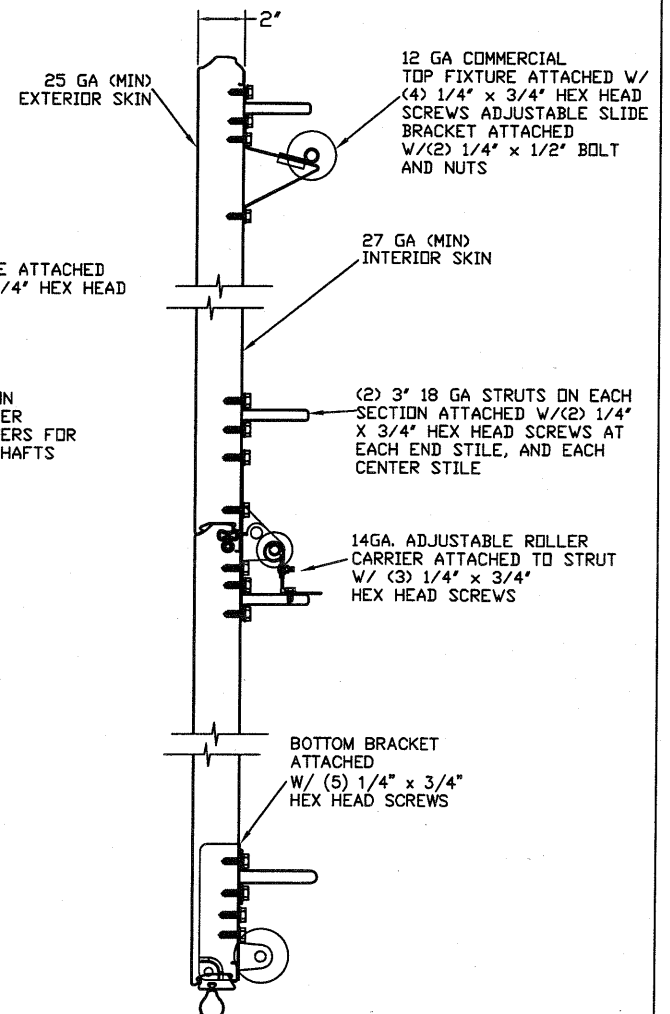
TYPICAL CENTER HINGE
N.T.S.



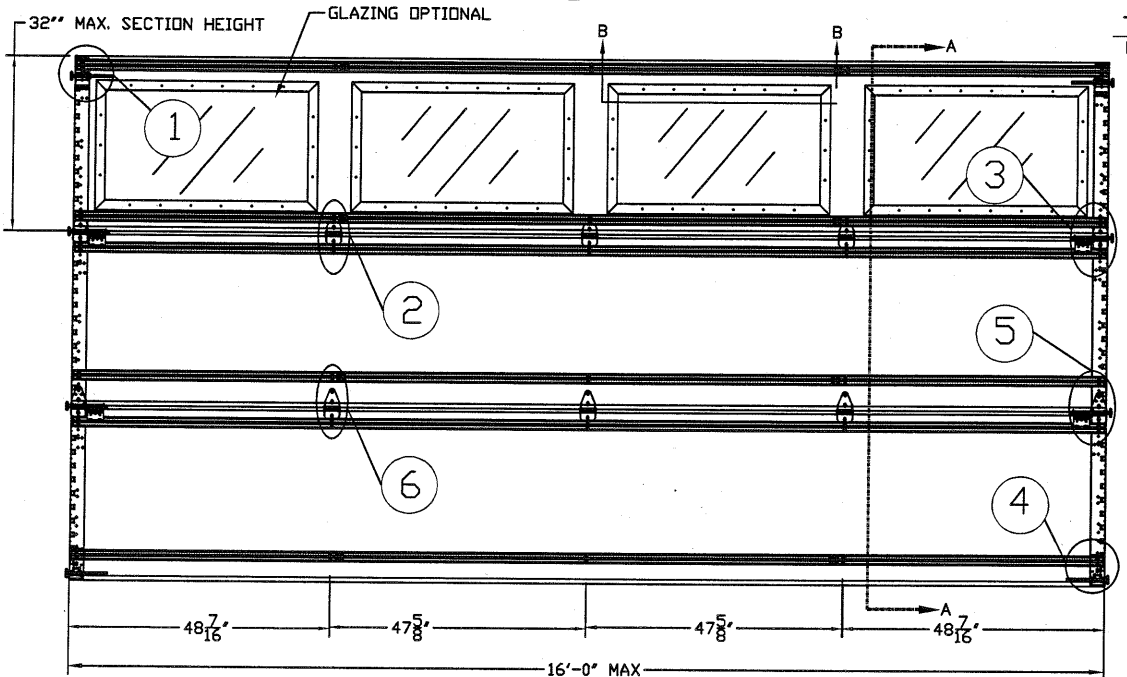
GLAZED SECTION END HINGE
N.T.S.



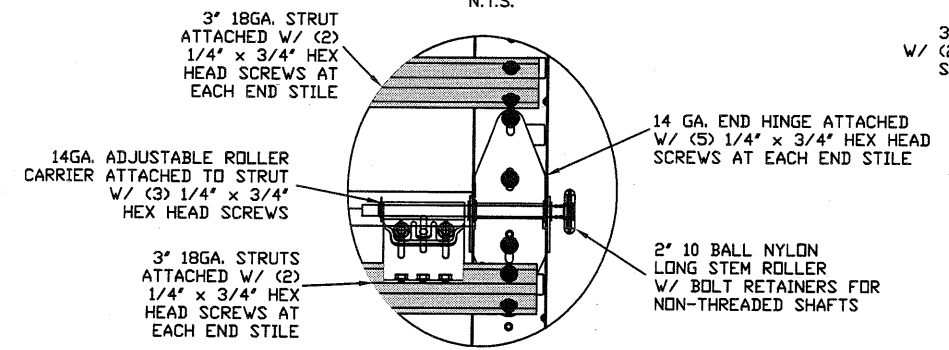
GLAZED SECTION CENTER HINGE
N.T.S.



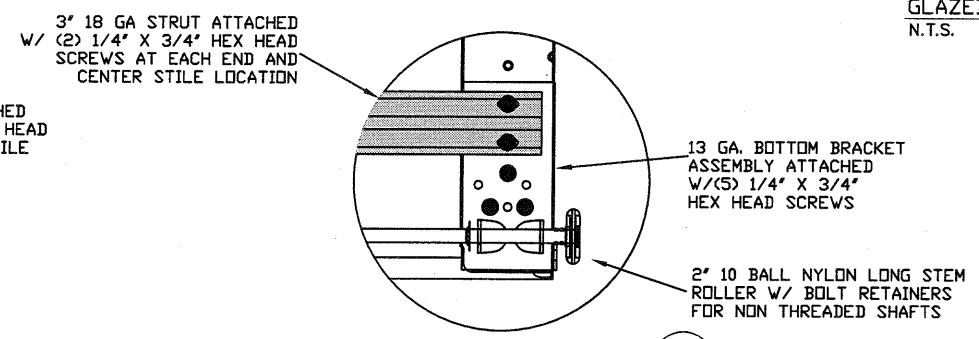
SECTION A-A (SIDE VIEW)
N.T.S.



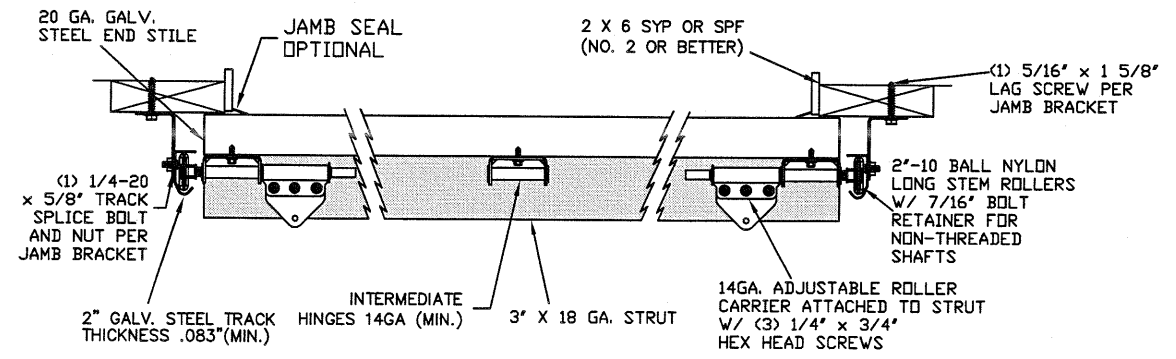
INSIDE ELEVATION
N.T.S.



TYPICAL END HINGE
N.T.S.



TYPICAL BOTTOM BRACKET
N.T.S.



TRACK MOUNTING DETAIL
N.T.S.

THE METHOD OF TESTING WAS IN SUBSTANTIAL CONFORMANCE WITH THE PROCEDURE DESCRIBED IN DASMA 108 & 115, AND ASTM E330. THE PRESSURES SHOWN ON THE DRAWINGS WERE CALCULATED USING ASCE 7-16 WITH THE FOLLOWING PARAMETERS (5 FEET OF DOOR WIDTH IN THE END ZONE, ROOF AT ANY SLOPE):

WIND SPEED (MPH)	156	141	134	128	123
EXPOSURE LEVEL	B	C	C	D	D
MEAN ROOF HEIGHT	30'	15'	25'	15'	25'

REV	DESCRIPTION OF REVISIONS	DATE	BY

MAX SIZE
16' x 14'

DESIGN LOADS
+21.8 PSF
-24.8 PSF

TEST LOADS
(1.5 x DESIGN LOADS)
+32.7 PSF
-37.2 PSF

Thomas L. Shelmerdine, PE (TX PE #85829)
Structural Solutions, PA (TX Firm #004063)

STATE OF TEXAS
THOMAS L. SHELMERDINE
85829
LICENSED PROFESSIONAL ENGINEER
TX

5921-G W. Friendly Ave., Greensboro, NC 27410

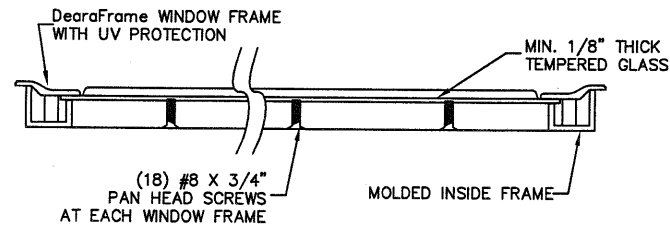
Amarr

MODEL #3000 AMARR CLASSICA 3000

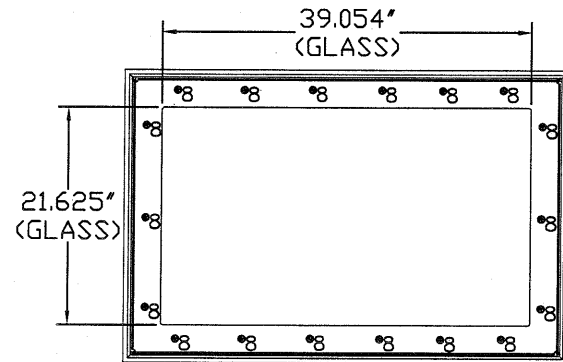
SIZE	DRAWN BY	DRC	DATE	05/28/20	DRAWING NUMBER
B	CHECKED BY	RLR	DATE	05/28/20	IRC-3316-120-17
AMARR COMPANY 165 CARRIAGE COURT WINSTON-SALEM, N.C. 27105					SHEET 1 OF 3

GLAZING OPTION CROSS SECTION

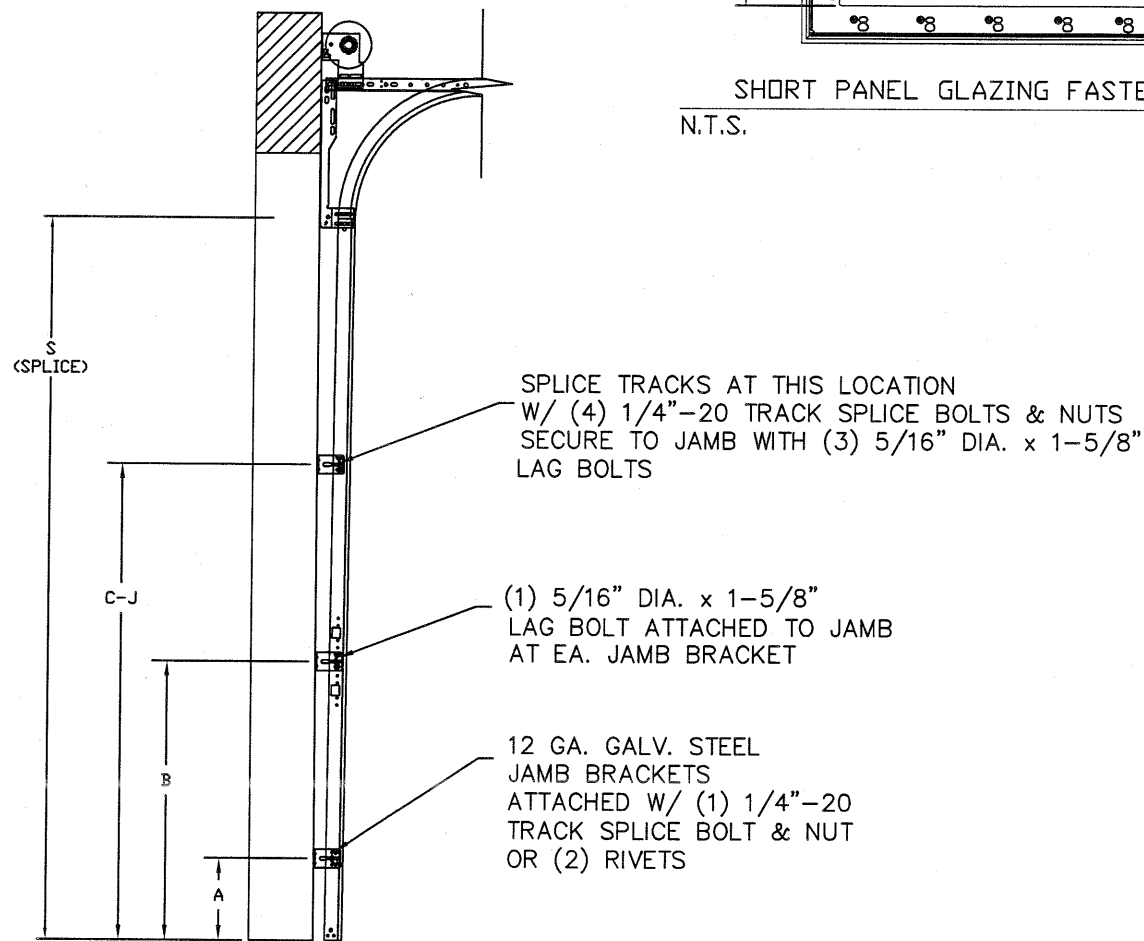
GLAZING NOT AVAILABLE IN WIND-BORNE DEBRIS REGION
GLAZING MEETS ASTM E1300-04



SECTION B-B



SHORT PANEL GLAZING FASTENER DETAIL
N.T.S.



TRACK CONFIGURATION FOR 8' TALL DOORS
N.T.S.

WOOD JAMB ATTACHMENT TO STRUCTURE

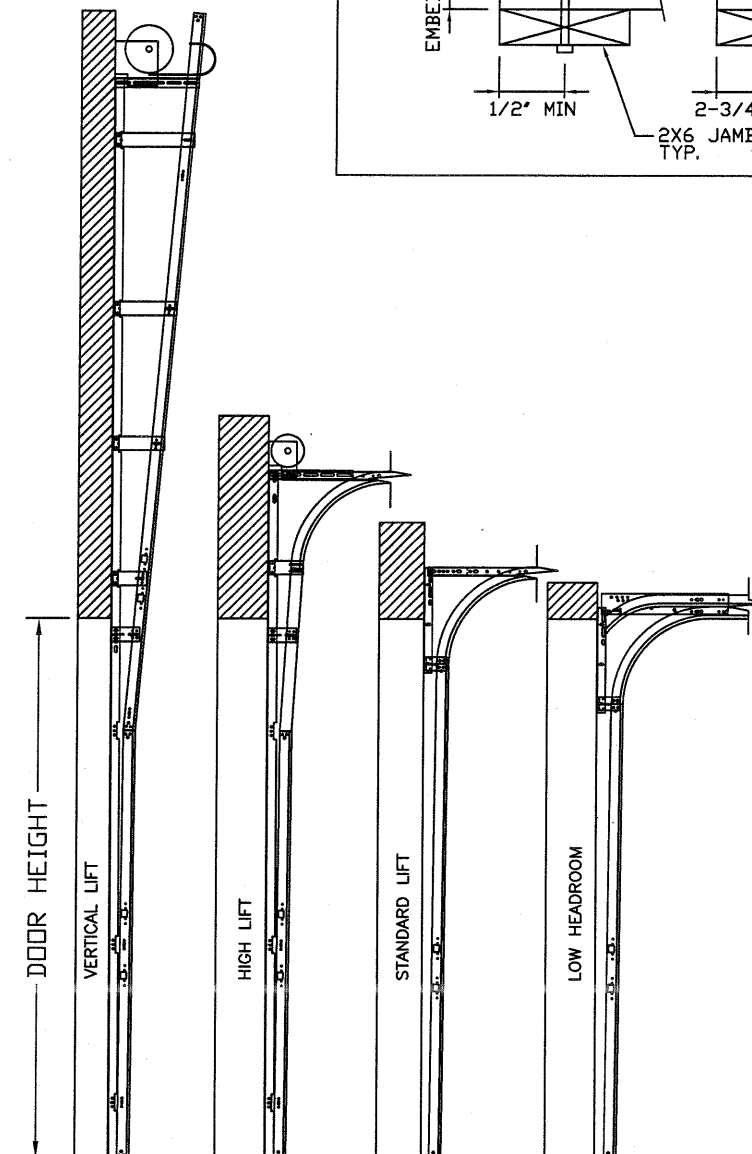
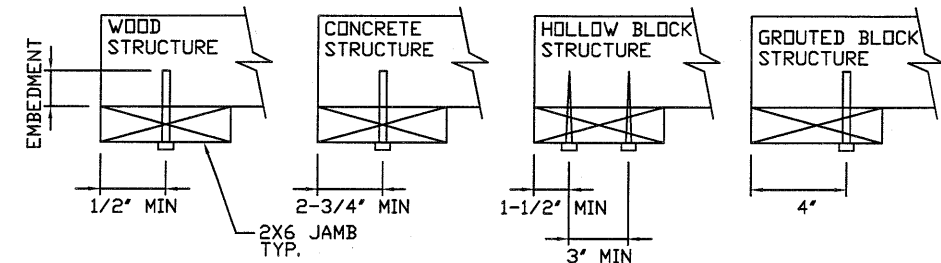
2 X 6 VERTICAL JAMB ATTACHMENT TO WOOD FRAME STRUCTURE
5/16" X 3" LAG SCREWS STARTING 6" FROM ENDS THEN 24" O.C. (1 1/2" EMBEDMENT)

2 X 6 VERTICAL JAMB ATTACHMENT TO 2,000 PSI CONCRETE
HILTI KWIK BOLT 3/8" X 4" STARTING 6" FROM ENDS THEN 24" O.C. (2 1/2" EMBEDMENT)
HILTI SLEEVE ANCHOR 3/8" X 2-3/4" STARTING 6" FROM ENDS THEN 24" O.C. (1 1/4" EMBEDMENT)
ITW/RAMSET REDHEAD (TRU-BOLT) 3/8" X 4" STARTING 6" FROM ENDS THEN 24" O.C. (2 1/2" EMBEDMENT)

2 X 6 VERTICAL JAMB ATTACHMENT TO HOLLOW C-90 BLOCK
SIMPSON 1/4" X 3" TITEN SCREWS STARTING 6" FROM ENDS, USE PAIRS OF FASTENERS (3' APART) AT 16" O.C. (1 1/2" EMBEDMENT)
HILTI 1/4" X 2-3/4" KWIK-CON II+ SCREWS STARTING 6" FROM ENDS, USE PAIRS OF FASTENERS (3' APART) AT 16" O.C. (1 1/4" EMBEDMENT)

2 X 6 VERTICAL JAMB ATTACHMENT TO GROUTED C-90 BLOCK (2000 PSI GROUT)
HILTI SLEEVE ANCHOR 3/8" X 2-3/4" STARTING 6" FROM ENDS THEN 24" O.C. (1 1/4" EMBEDMENT) (OR, USE FASTENERS FOR HOLLOW C-90 BLOCK)

*LAGS AND BOLTS CAN BE COUNTERSUNK TO PROVIDE A FLUSH MOUNTING SURFACE.
*PREPARATION OF WOOD JAMBS BY OTHERS



AVAILABLE TRACK CONFIGURATIONS
N.T.S.

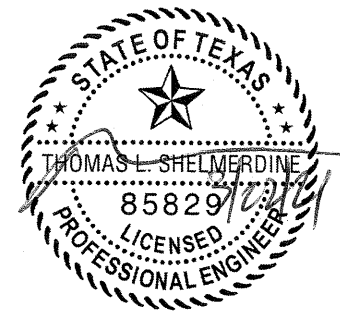
REV	DESCRIPTION OF REVISIONS	DATE	BY

MAX SIZE
16' x 14'

DESIGN LOADS
+21.8 PSF
-24.8 PSF

TEST LOADS
(1.5 x DESIGN LOADS)
+32.7 PSF
-37.2 PSF

Thomas L. Shelmerdine, PE (TX PE #85829)
Structural Solutions, PA (TX Firm #F-004063)



5921-G.W. Friendly Ave., Greensboro, NC 27410

Amarr

MODEL #3000 AMARR CLASSICA 3000

SIZE	DRAWN BY	DRC	DATE	05/28/20	DRAWING NUMBER
B	CHECKED BY	RLR	DATE	05/28/20	IRC-3316-120-17
AMARR COMPANY 165 CARRIAGE COURT WINSTON-SALEM, N.C. 27105					SHEET 2 OF 3

SPECIFICATIONS AND NOTES

1. ALL THE LOAD FROM THE DOOR IS TRANSFERRED TO THE VERTICAL TRACK, FROM THE TRACK THE LOAD IS TRANSFERRED TO THE VERTICAL JAMBS. THE HORIZONTAL JAMB OR HEADER RECEIVES NO PORTION OF THE LOAD TRANSFERRED FROM THE DOOR.
2. EACH VERTICAL JAMBS RECEIVES MAXIMUM DESIGN LOADS OF: +174.4 LBS/FT & -198.4 LBS/FT
3. DOORS AND HARDWARE WILL BE DESIGNED, MANUFACTURED AND INSTALLED WITH STANDARDS AS SET FORTH BY DASMA.
4. DOOR SECTIONS SHALL BE 25 GA. EXTERIOR MIN. (.019"), AND 27 GA. INTERIOR MIN. (.014") ROLLED FORMED LIGHT COMMERCIAL QUALITY
5. SUPPORTING STRUCTURAL ELEMENTS SHALL BE DESIGNED BY A REGISTERED PROFESSIONAL ENGINEER FOR WIND LOADS INDICATED ON THIS DRAWING IN ADDITION TO OTHER LOADINGS.
6. DOOR IS MANUFACTURED AND TESTED IN ACCORDANCE WITH THE 2018 IRC/IBC

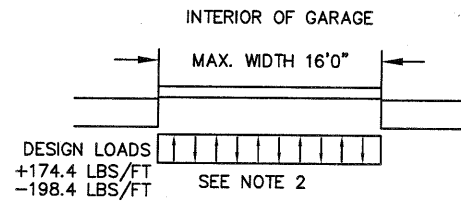


TABLE 2

SECTION	STRUT SIZE
TOP	3"
	3"
5TH	3"
	3"
4TH	3"
	3"
3RD	3"
	3"
2ND	3"
	3"
BOTTOM	3"
	3"

TABLE 4

Section	Center Stile Locations			Max Design Loads Allowed	
	Width (ft)	1st (in)	2st (in)	3rd (in)	Positive (PSF)
15' 6"	47.42	93.00	138.58	22.4	25.5
15' 8"	48.02	94.00	139.98	22.2	25.2
15' 10"	48.62	95.00	141.38	21.9	24.9
16' 0"	48.42	96.00	143.58	21.8	24.8

TABLE 3

DOOR HEIGHT		TRACK ATTACHMENT									
		A	B	C	D	E	F	G	H	I	J
7'	0"	10.0"	34"	58"							
7'	6"	10.0"	34"	58"							
8'	0"	10.0"	34"	58"	82"						
8'	6"	10.0"	34"	58"	82"						
9'	0"	10.0"	34"	58"	82"	94"					
9'	6"	10.0"	34"	58"	82"	94"					
10'	0"	10.0"	34"	58"	82"	94"	106"				
11'	0"	10.0"	34"	58"	82"	94"	106"	118"			
12'	0"	10.0"	34"	58"	82"	94"	106"	118"	130"		
13'	0"	10.0"	34"	58"	82"	94"	106"	118"	130"	142"	
14'	0"	10.0"	34"	58"	82"	94"	106"	118"	130"	142"	154"

ALL TRACK AND ATTACHMENT SPACING +/-2" ALLOWED WITH SYP OR SPF NO. 2 OR BETTER ONLY

REV	DESCRIPTION OF REVISIONS	DATE	BY

MAX SIZE
16' x 14'

DESIGN LOADS
+21.8 PSF
-24.8 PSF

TEST LOADS
(1.5 x DESIGN LOADS)
+32.7 PSF
-37.2 PSF

THOMAS L. SHELMERDINE
85829
LICENSED PROFESSIONAL ENGINEER
TX

Thomas L. Shelmerdine, PE (TX PE #85829)
Structural Solutions, PA (TX Firm #004063)

5921-G W. Friendly Ave., Greensboro, NC 27410

MODEL #3000 AMARR CLASSICA 3000

SIZE	DRAWN BY	DRC	DATE	05/28/20	DRAWING NUMBER
B	CHECKED BY	RLR	DATE	05/28/20	IRC-3316-120-17

AMARR COMPANY
165 CARRIAGE COURT WINSTON-SALEM, N.C. 27105

SHEET 3 OF 3