

NOTE: Track configuration above the door opening does not affect the wind load rating of the door.

This product has been tested per TAS202 for static air pressure.
 This product has been tested per TAS201/203 for large missile impact and cyclic wind pressure.

Jamb bracket quantities shown are for use with grade 2 or better southern pine jambs.
 Supporting structural element designs are to be the responsibility of the professional of record for the building or structure for the loads listed on this drawing.

Door Widths Up To	Design Pressures		End Stiles	Model Number						Impact Resistant
	+ psf	- psf		Minimum Center Stiles		Minimum Center Hinges		Minimum Center Hinges		
14'-2"	45.0	-50.0	Double	6	4	5	2	7	3	YES
16'-2"	45.0	-50.0	Double	7	3	7	3	7	3	YES
18'-2"	45.0	-50.0	Double	7	3	7	3	7	3	YES

This product is available in narrower sizes with the same PSF and constructed as shown.
 This product is designed and sold by PSF. The AHJ or Engineer of Record is responsible for determining the PSF required for any given site.

Door Height	Total # of Sections	Total # of Struts	Strut Configuration	Jamb Brkts/ Side
6'-0"	3	5	SEE SHEET 3	5
6'-0"	4	6		5
6'-3"	4	6		5
6'-6"	4	6		6
6'-9"	4	6		6
7'-0"	4	6		6
7'-3"	4	6		6
7'-6"	4	6		7
7'-6"	5	8		7
7'-9"	4	6		7
7'-9"	5	8		7
8'-0"	4	6		7
8'-0"	5	8	7	

NOTICE:
 These drawings are a supplement to the installation instructions for a standard door and only covers those procedures that vary from standard door installation. If these specific procedures are not followed, the door may not perform as designed.


John E. Scates, P.E.
 2560 King Arthur Blvd. Ste 124-54
 Lewisville, Texas 75056
 Texas P.E. 56308/F2203

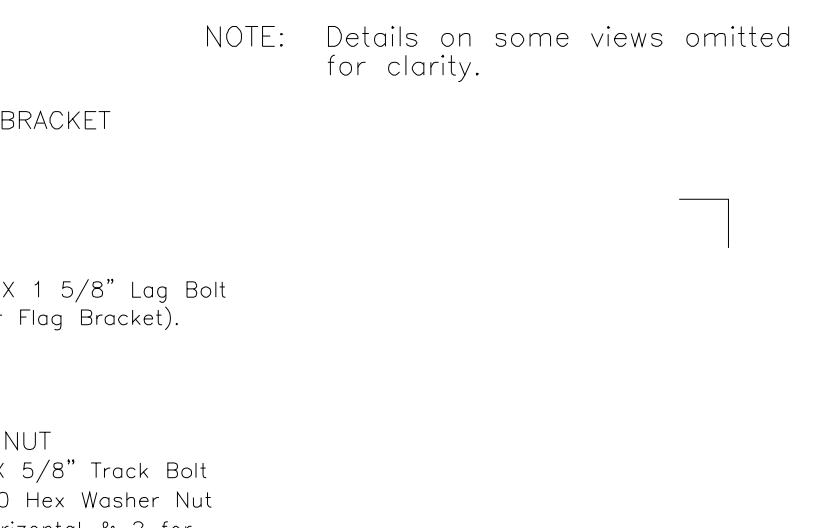
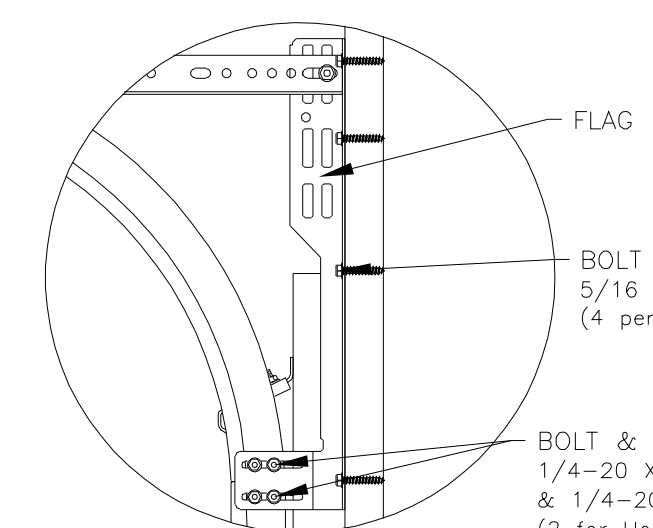
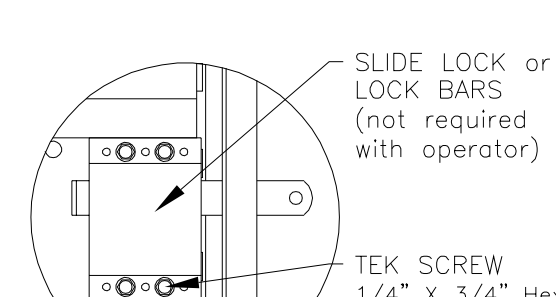
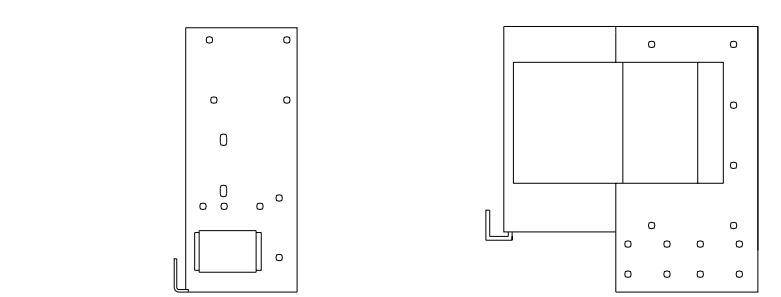
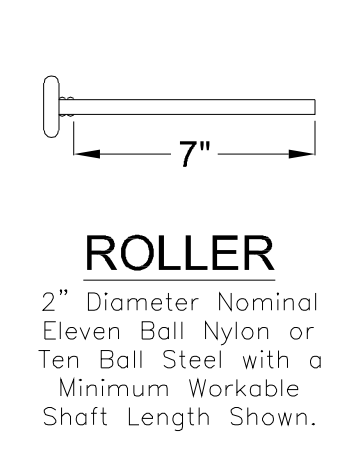
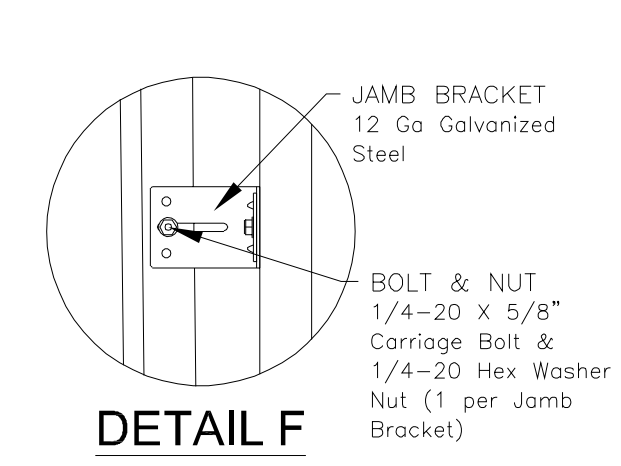
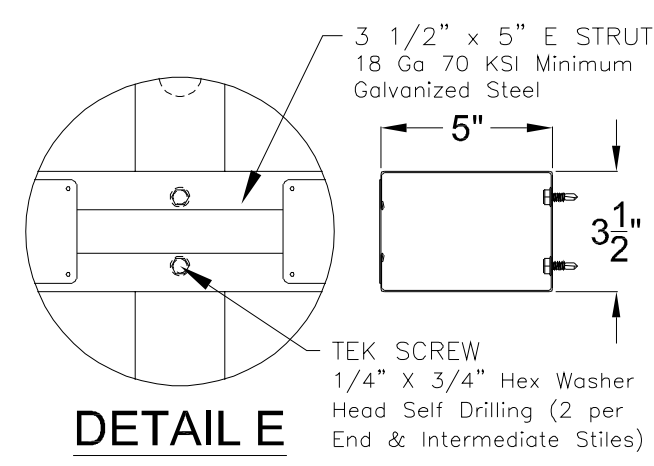
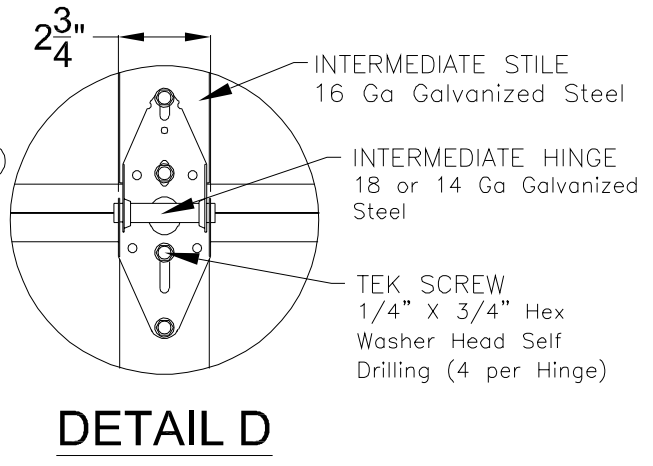
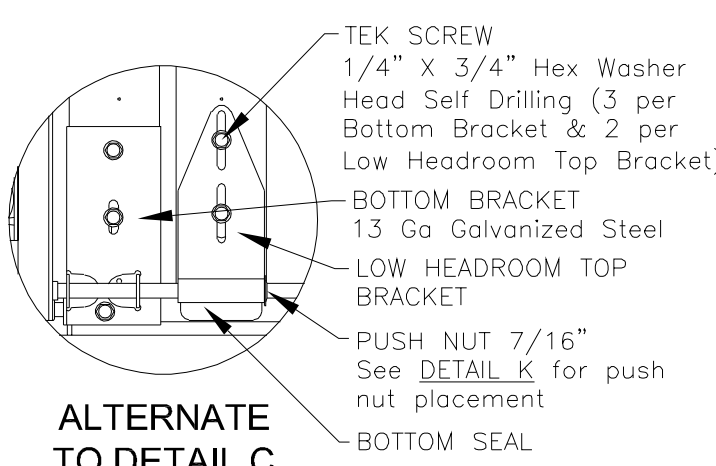
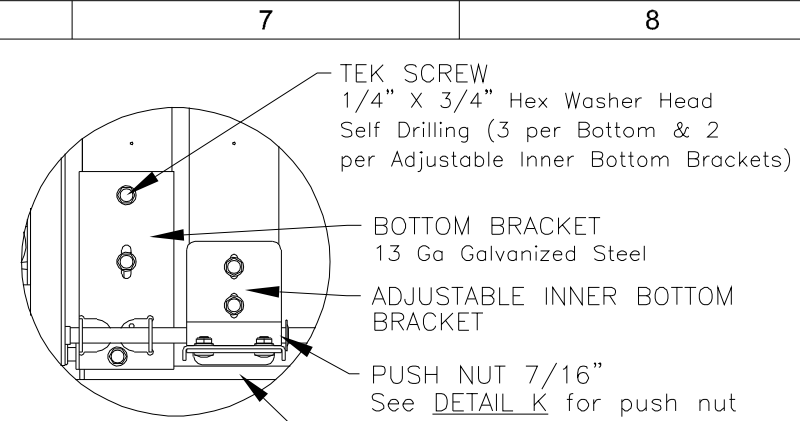
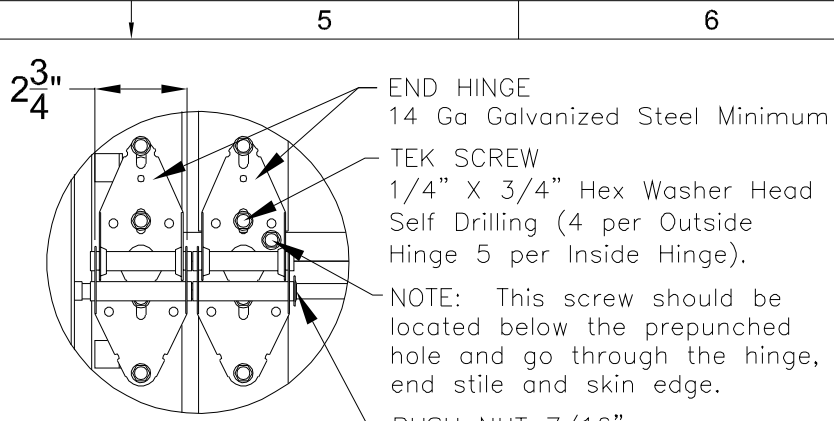
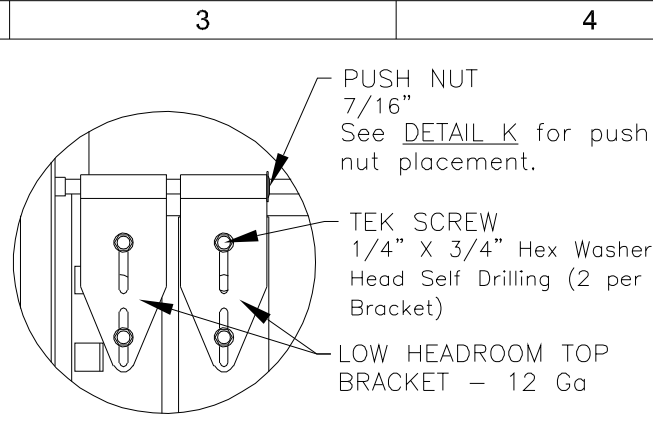
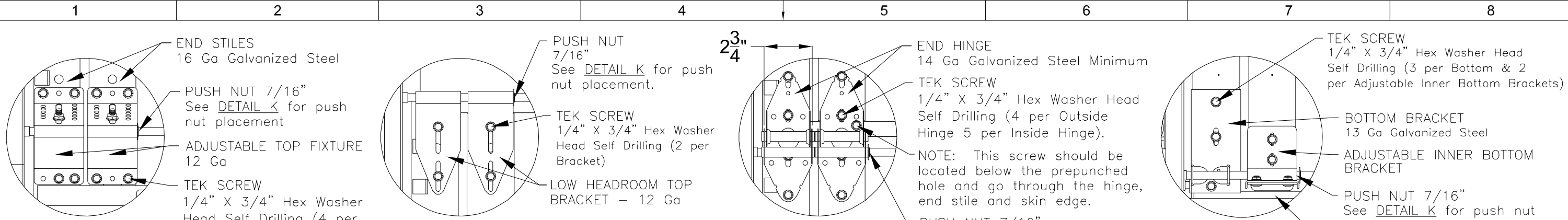
IMPACT RESISTANT

COMPLIES WITH IBC/IRC 2018 Professional Engineer seal provided only for verification of wind load construction details.

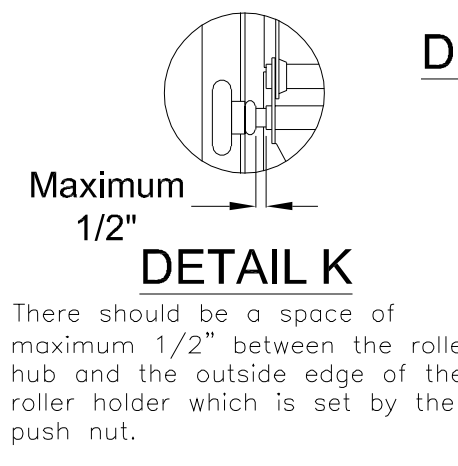
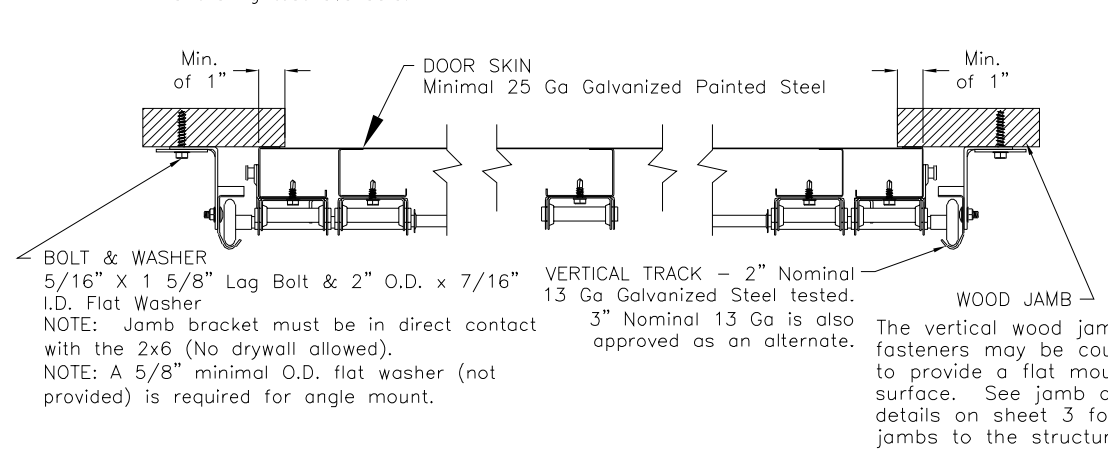
Maximum section height is 24 in.
 Maximum door height is 20 ft.

All doors, even those above the tested height, are available with jamb brackets or commercial full angle. The quantity and dimensional location of the jamb brackets/track clips and the jamb mounting shown above should be maintained.

 320 Sycamore Wauseon, Ohio 43567 © Copyright 2014	DESCRIPTION: 18' 2" PAN 2000 SERIES WIND LOAD SECTIONAL DOOR DESIGN PRESSURE +45.0/-50.0 PSF	
	DRAWING NO.: WLTI-2000-0218-08-45-50	REV.: A
	DRAWN BY: MVS	DATE DRAWN: 11/12/18
	MODEL(S): See Sheet 3	SHEET: 1 OF 4



NOTE: The bottom bracket configuration tested (shown in DETAIL C) is the lightest available.

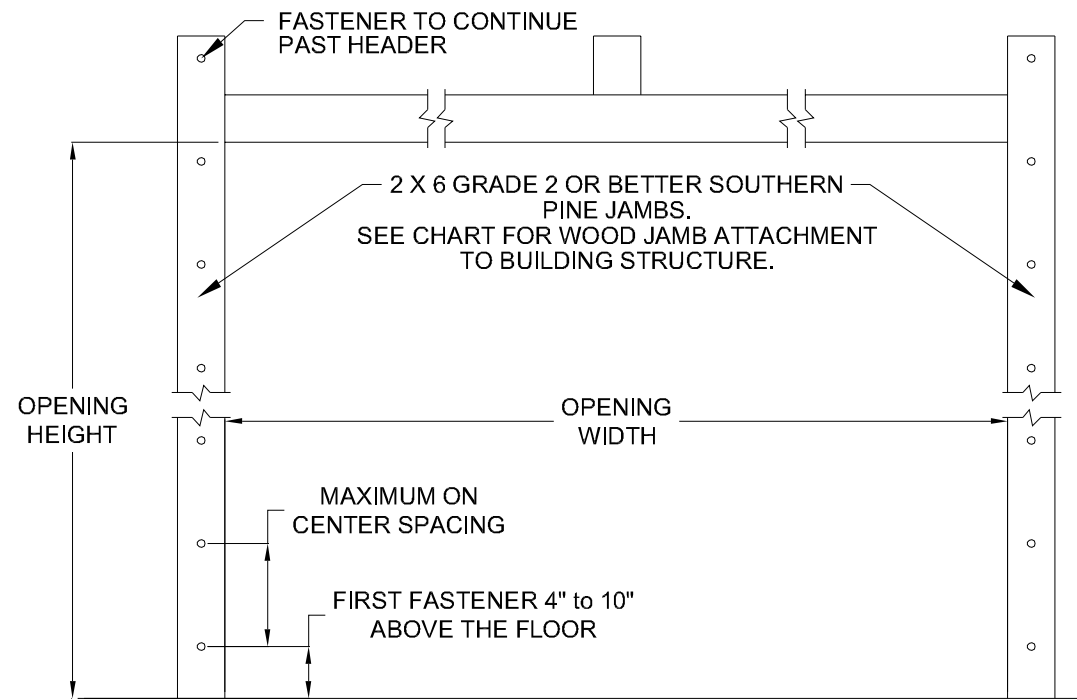


IMPACT RESISTANT

John E. Scates, P.E.
2560 King Arthur Blvd. Ste 124-54
Lewisville, Texas 75056
Texas P.E. 56308/F2203

Professional Engineer seal provided only for verification of wind load construction details.

<p>320 Sycamore Wauseon, Ohio 43567 © Copyright 2014</p>	DESCRIPTION:		REV. A
	18" 2" PAN 2000 SERIES WIND LOAD SECTIONAL DOOR		
	DESIGN PRESSURE +45.0/-50.0 PSF		
	DRAWING NO.: WLTI-2000-0218-08-45-50		
DRAWN BY: MVS	DATE DRAWN: 11/12/18	REV. DATE: 3/7/22	SHEET: 2 OF 4
MODEL(S): See Sheet 3			

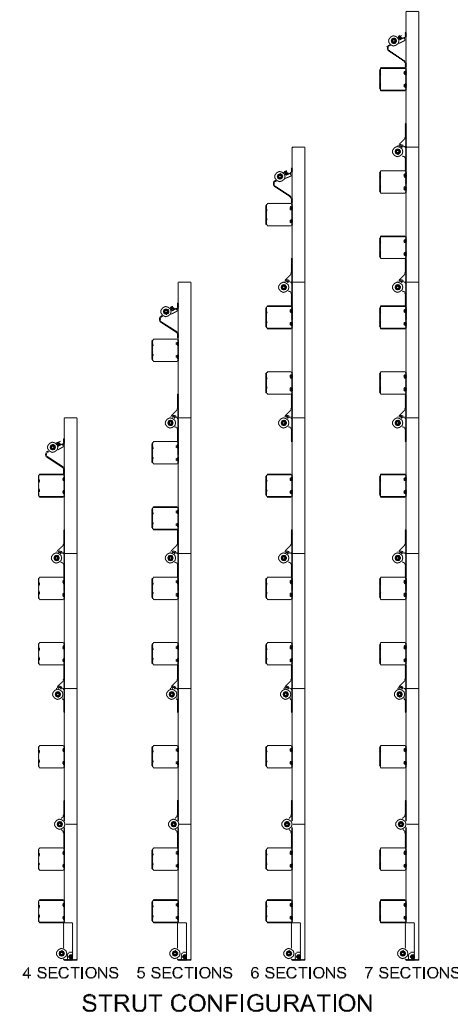


WOOD JAMB ATTACHMENT						
Building Structure	Fastener Type	Minimum Embedment	Minimum Edge Distance	Minimum on Center Spacing	Maximum on Center Spacing	Allowable Tension Load
Min. 2500 PSI to 4000 PSI Concrete	Tapcon + (PLUS) 1/4" w/ 1" OD washer	2"	2.50"	5.00"	16"	551
Southern Pine	3/8" Lag w/ 1 1/8" OD washer	1.50"	1.50"	1.50"	18"	620
Spruce Pine Fir	3/8" Lag w/ 1 1/8" OD washer	1.50"	1.50"	1.50"	14"	482

NOTE: 2X6 mounted to the wall must be Southern Pine Grade 2 or better.

MODEL NUMBERS

MODEL NUMBERS AVAILABLE
PAN C2011 SERIES
PAN C2015 SERIES
PAN C2411 SERIES
PAN C2415 SERIES
PAN C2410 & R2410 SERIES
PAN C2460 & R2460 SERIES
PAN C2461 & R2461 SERIES
PAN C2471 & R2471 SERIES
PAN C2472 & R2472 SERIES
PAN C2480 & R2480 SERIES
PAN C2481 & R2481 SERIES
PAN C2482 & R2482 SERIES



IMPACT RESISTANT

John E. Scates, P.E.
 2560 King Arthur Blvd. Ste 124-54
 Lewisville, Texas 75056
 Texas P.E. 56308/F2203

Professional Engineer seal provided only for verification of wind load construction details.



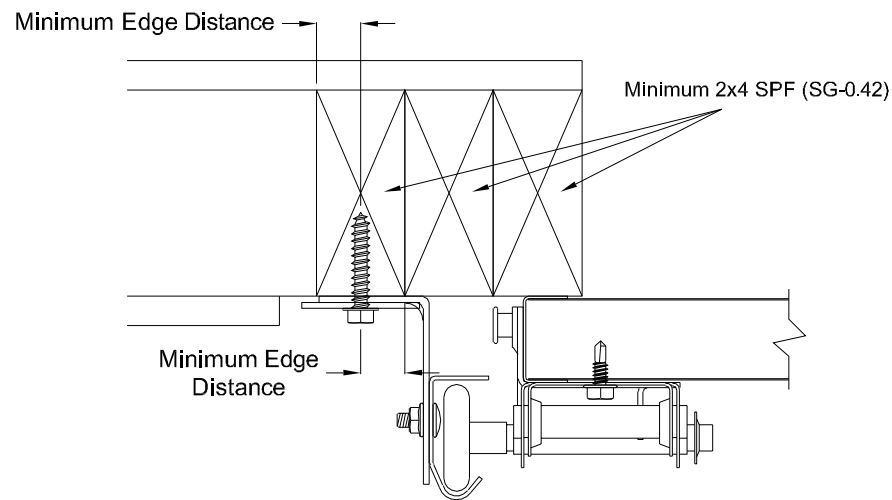
DESCRIPTION:
 18' 2" PAN 2000 SERIES WIND LOAD SECTIONAL DOOR
 DESIGN PRESSURE +45.0/-50.0 PSF

DRAWING NO.: WLTI-2000-0218-08-45-50 **REV.** A

DRAWN BY: MVS **DATE DRAWN:** 11/12/18 **REV. DATE:** 3/7/22

MODEL(S): See Sheet 3 **SHEET:** 3 OF 4

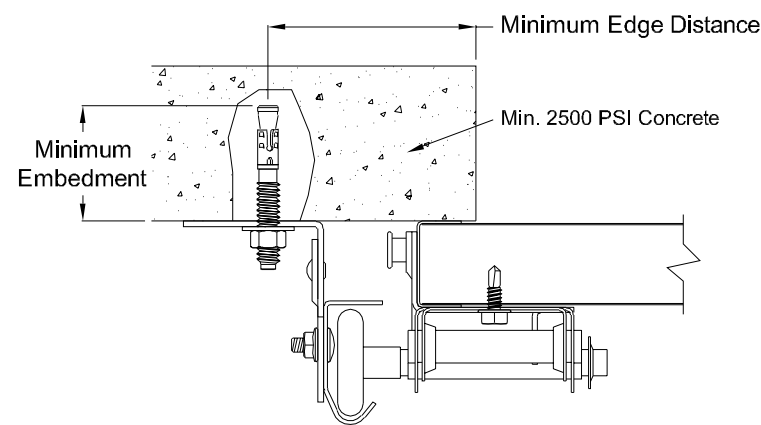
320 Sycamore
 Wauseon, Ohio 43567
 © Copyright 2014



Direct Wood Mounting Detail

Bracket Mount Shown, Reverse and Continuous Angle Mount Also Approved As Alternate.

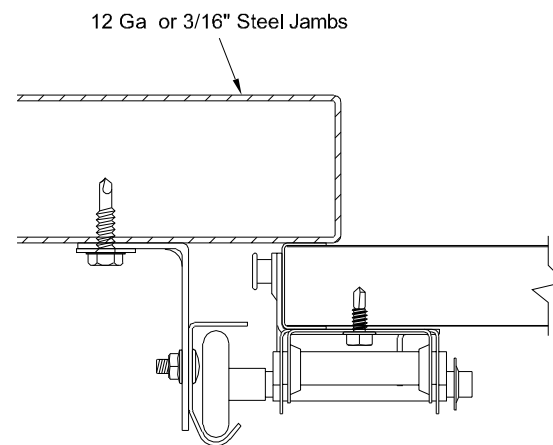
- 439 lbs. per anchor allowable load
- 5/16" Dia. Lag Screw w/1-1/8" O.D. Flat Washer (shall conform to ANSI/ASME standard B18.2.1)
- Minimum Screw Length: Spruce-Pine-Fur (SPF) - 2-1/2"
Southern Pine - 1-5/8"
- Minimum Edge Distance: 1/2"
- Maximum on Center Spacing: 13"



Direct Concrete Mounting Detail

Continuous Angle Clip Mount Shown, Bracket and Reverse Continuous Angle Mount Also Approved As Alternate.

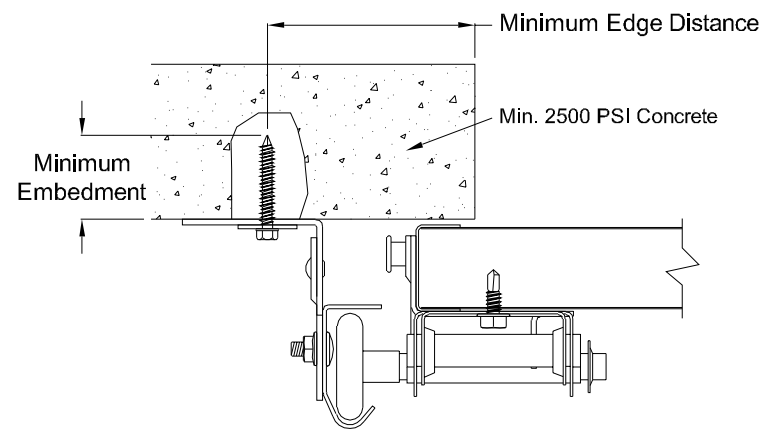
- 831 lbs. per anchor allowable load
- 3/8" Dia. Ankr-Tite CCAT w/1-1/8" O.D. Flat Washer (by Wej-It Fastening Systems)
- Minimum Embedment: 2-5/8"
- Minimum Edge Distance: 2-1/2"
- Minimum on Center Spacing: 6"
- Maximum on Center Spacing: 24"



Direct Steel Mounting Detail

Bracket Mount Shown, Reverse and Continuous Angle Mount Also Approved As Alternate.

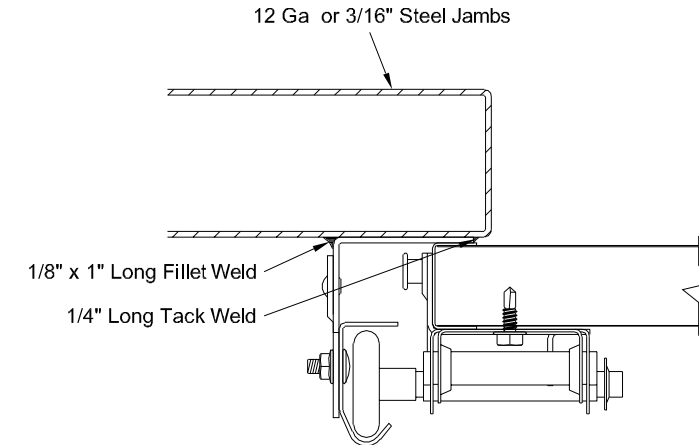
- 232 lbs. per anchor allowable load - 12 Ga Steel
- 569 lbs. per anchor allowable load - 3/16" Ga Steel
- 5/16"-12 Tek Self-Drilling Screw w/9/16" O.D. Flat Washer
- 12 Ga Maximum on Center Spacing: 7"
- 3/16" Maximum on Center Spacing: 17"



Direct Concrete Mounting Detail

Continuous Angle Clip Mount Shown, Bracket and Reverse Continuous Angle Mount Also Approved As Alternate.

- 562 lbs. per anchor allowable load
- 1/4" Dia. Concrete Self-Tapping & Wedge Anchor w/1" O.D. Flat Washer (Includes Tapcon+ (by ITW), Wedge-Bolt+ (by Powers Fasteners) & Red Head TruBolt wedge anchor (by ITW))
- Minimum Embedment: 2"
- Minimum Edge Distance: 2-1/2"
- Minimum on Center Spacing: 5"
- Maximum on Center Spacing: 16"



Direct Steel Mounting Detail

Reverse Continuous Angle Clip Mount Shown, Continuous Angle Mount Also Approved As Alternate.

- 1272 lbs. per anchor allowable load
- 1/8" Nom. x 1" Long Fillet and 1/4" Long Tack Weld (E60xx Electrodes Min.)
- Welds performed by a certified welder or inspected by a certified welding inspector to verify integrity of the welds.
- Maximum on Center Spacing: Apply welds at each roller location not to exceed 24"

IMPACT RESISTANT

John E. Scates, P.E.
2560 King Arthur Blvd. Ste 124-54
Lewisville, Texas 75056
Texas P.E. 56308/F2203

Professional Engineer seal provided only for verification of wind load construction details.



DESCRIPTION: 18' 2" PAN 2000 SERIES WIND LOAD SECTIONAL DOOR DESIGN PRESSURE +45.0/-50.0 PSF			
DRAWING NO.: WLTI-2000-0218-08-45-50	REV. A		
DRAWN BY: MVS	DATE DRAWN: 11/12/18	REV. DATE: 3/7/22	
MODEL(S): See Sheet 3			SHEET: 4 OF 4

320 Sycamore
Wauseon, Ohio 43567
© Copyright 2014