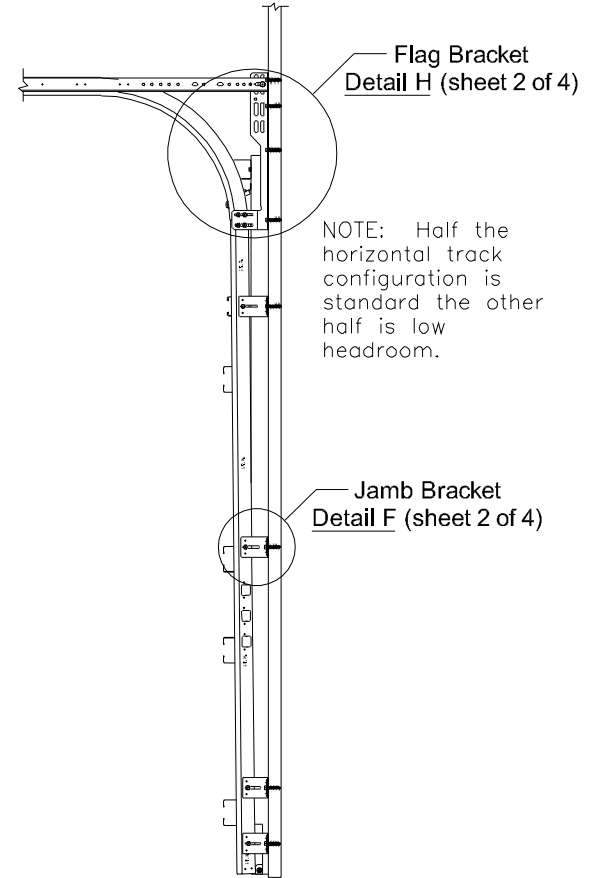


NOTE: Track configuration above the door opening does not affect the wind load rating of the door.



Door Height 8' - 0" Shown
See chart below for other door heights

Door Width 10' - 2" Shown
See chart below for other door widths

SEE SHEET 3 OF 4 FOR GLAZING DETAIL AND LITE OPTIONS.
NOTE: IMPACT LITES NOT AVAILABLE IN INSULATED PAN DOORS.

Slide Lock or Lock Bars Detail G (sheet 2 of 4)
Manual door locks are required unless an automatic operator is installed.

NOTE: Half the horizontal track configuration is standard the other half is low headroom.

Jamb Bracket Detail F (sheet 2 of 4)

Bottom Bracket Detail C (sheet 2 of 4) End Hinge Detail B (sheet 2 of 4) Strut & Strut Attachment Detail E (sheet 2 of 4) Intermediate Hinge Detail D (sheet 2 of 4)

66 1/2" +/- 3"

38 1/2" +/- 3"

4" +/- 3"
10 1/2" +/- 3"

This product has been evaluated per ANSI/DASMA 108 for static air pressure.
This product has been evaluated per ANSI/DASMA 115 for large missile impact and cyclic wind pressure.

Jamb bracket quantities shown are for use with grade 2 or better southern pine jambs.
Supporting structural elements are to be designed by a registered professional engineer for specific wind loads.

Model Number	
PAN C2460 & R2460 SERIES	PAN C2011 SERIES
PAN C2461 & R2461 SERIES	PAN C2015 SERIES
PAN C2470 & R2470 SERIES	PAN C2411 SERIES
PAN C2410 & R2410 SERIES	PAN C2415 SERIES
PAN C2480 & R2480 SERIES	PAN C2511 SERIES
PAN C2481 & R2481 SERIES	PAN C2460 & R2460 SERIES
PAN C2482 & R2482 SERIES	PAN C2461 & R2461 SERIES
PAN R2580 SERIES	PAN C2470 & R2470 SERIES
PAN R2581 SERIES	PAN C2471 & R2471 SERIES
PAN R2582 SERIES	PAN C2472 & R2472 SERIES
	PAN R2560 SERIES
	PAN R2561 SERIES
	PAN R2570 SERIES
	PAN R2571 SERIES
	PAN R2572 SERIES

Door Height	Total No. of Sections	Total # of Struts (When lite section is the top section. If not see the notice at the right)	Jamb Brkts/Side
6'-0"	3	5	3
6'-0"	4	6	3
6'-3"	4	6	3
6'-6"	4	6	4
6'-9"	4	6	4
7'-0"	4	6	4
7'-3"	4	6	4
7'-6"	4	6	4
7'-6"	5	8	4
7'-9"	4	6	4
7'-9"	5	8	4
8'-0"	4	6	4
8'-0"	5	8	4

NOTICE:
These drawings are a supplement to the installation instructions for a standard door and only covers those procedures that vary from standard door installation. If these specific procedures are not followed, the door may not perform as designed.

NOTICE:
The lite section of this door may be replaced with a section with another lite style or a solid section. In either case the strut and stile configuration should remain the same.

NOTICE:
Only one lite section per door is permitted. The lite section can be used anywhere except for the bottom section. If the lite section is not the top section then the struts must be located as shown in the STRUT CONFIGURATION on sheet 3 of 4.

Maximum section height is 24 in.
Maximum door height is 20 ft.
All doors, even those above the tested height, are available with jamb brackets or commercial full angle. The maximum spacing of the jamb brackets/track clips should be maintained.

Door Widths Up To	Design Pressures		End Stile	Minimum Center Stiles		Minimum Center Hinges		Impact Resistant
	+ psf	- psf		Stiles	Hinges	Stiles	Hinges	
8'-2"	35.0	-39.0	Single	3	1	3	1	YES
9'-2"	35.0	-39.0	Single	3	1	3	1	YES
10'-2"	35.0	-39.0	Single	4	2	3	1	YES

This product is available in narrower sizes with the same PSF and constructed as shown.
This product is designed and sold by PSF. The AHJ or Engineer of Record is responsible for determining the PSF required for any given site.

IMPACT RESISTANT

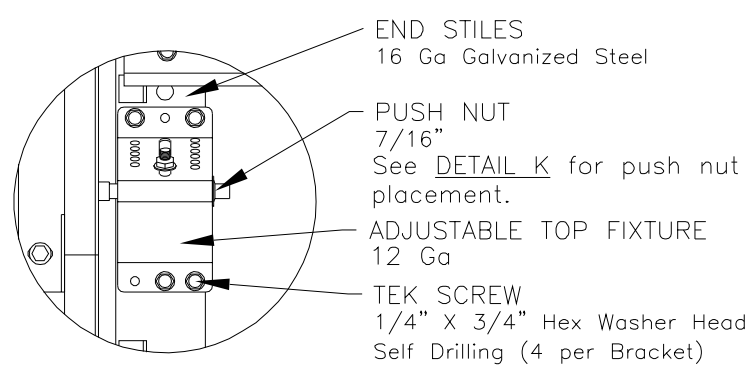
COMPLIES WITH IBC/IRC 2018

John E. Scates, P.E.
2560 King Arthur Blvd. Ste 124-54
Lewisville, Texas 75056
Texas P.E. 56308/F2203

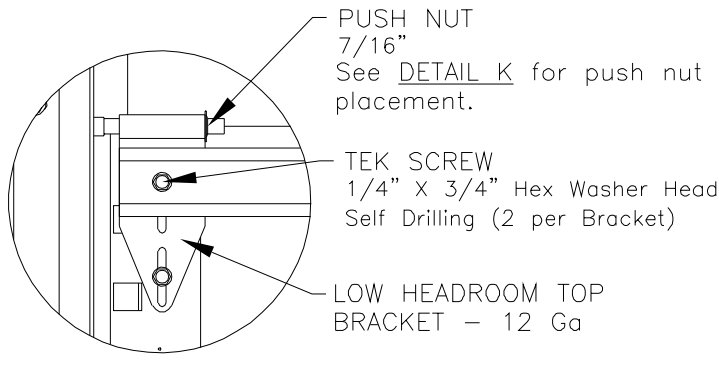
Professional Engineer seal provided only for verification of wind load construction details.



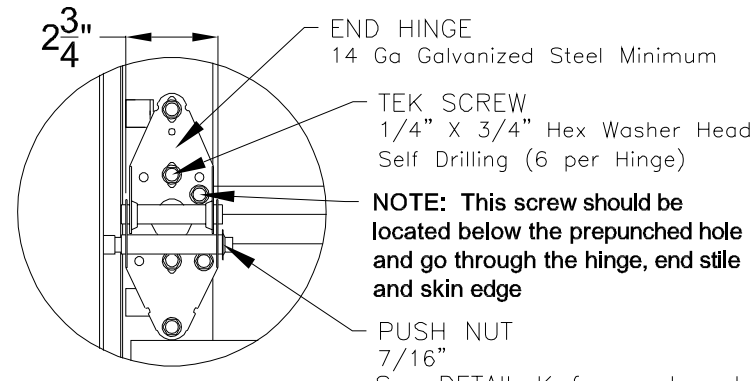
DESCRIPTION: 10' 2" PAN 2000 SERIES W/LITES WIND LOAD SECTIONAL DOOR DESIGN PRESSURE +35.0/-39.0 PSF	
DRAWING NO.: WLTl-2000-0122-08-35-39L	REV.: A
DRAWN BY: MVS	DATE DRAWN: 11/9/18
MODEL(S): See Sheet 3	REV. DATE: 3/7/22
SHEET: 1 OF 4	



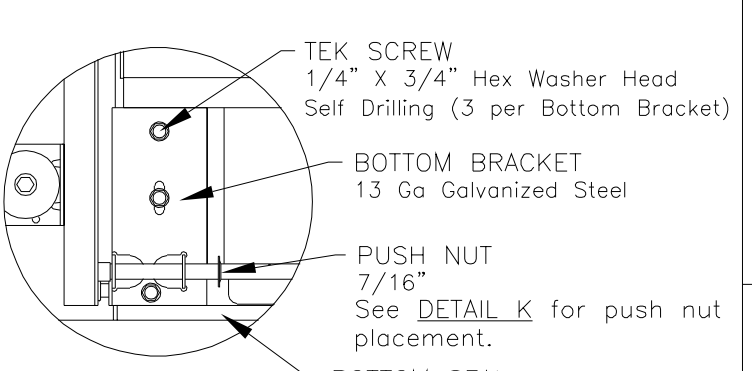
DETAIL A



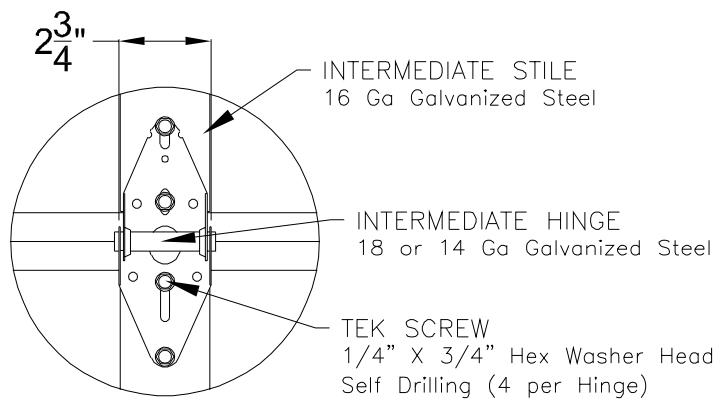
LOW HEADROOM TOP BRACKET



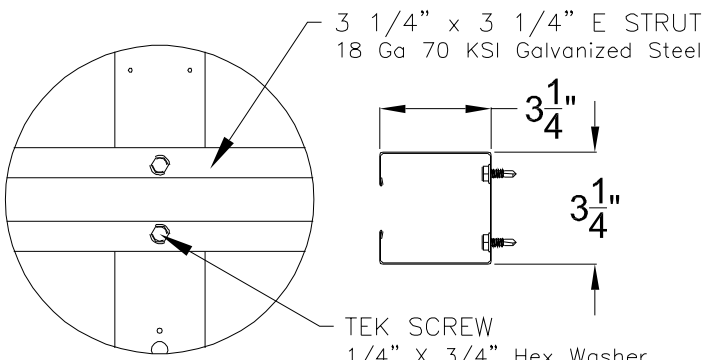
DETAIL B



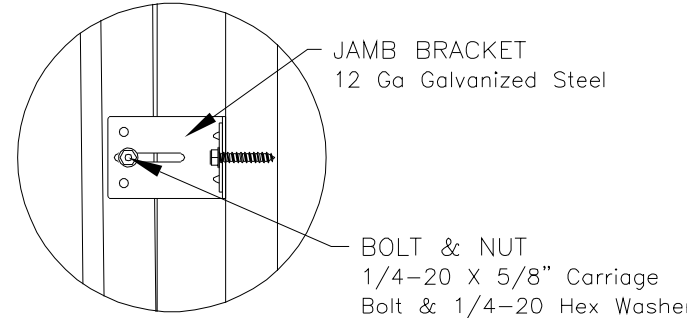
DETAIL C



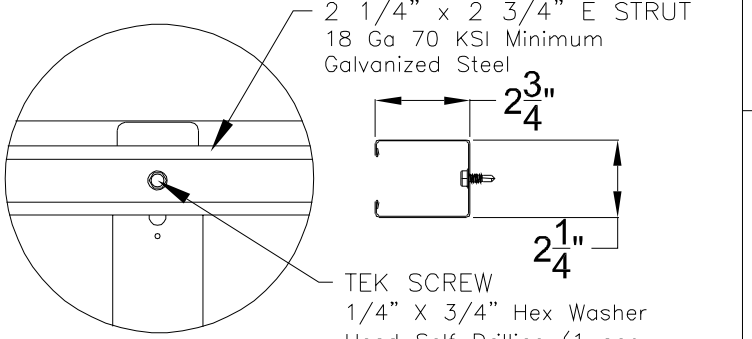
DETAIL D



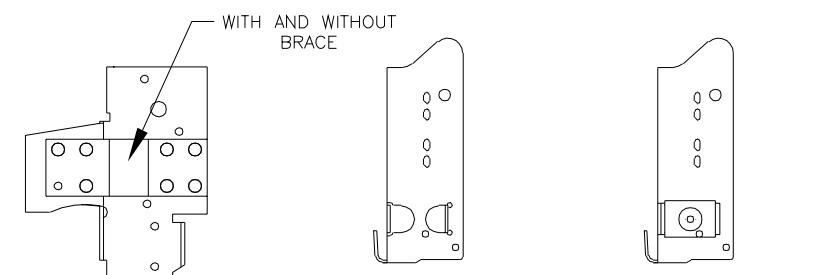
DETAIL E



DETAIL F

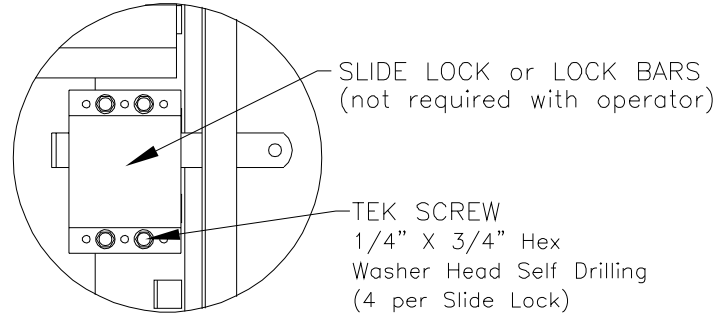


DETAIL J

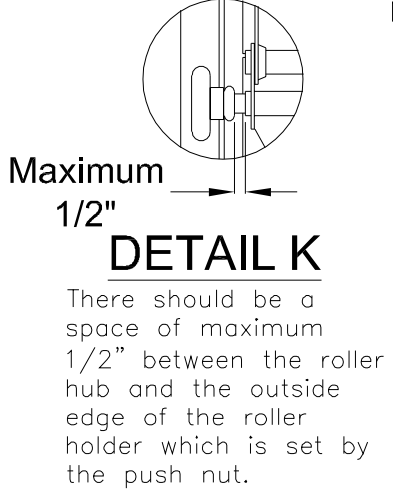
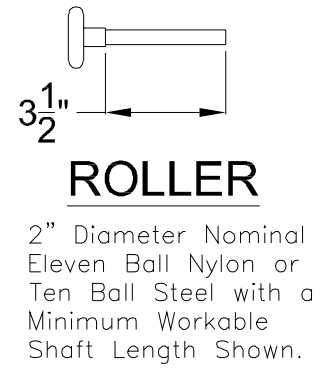


ALTERNATE BOTTOM BRACKETS

NOTE: The bottom bracket tested (shown in DETAIL C) is the lightest bracket available.



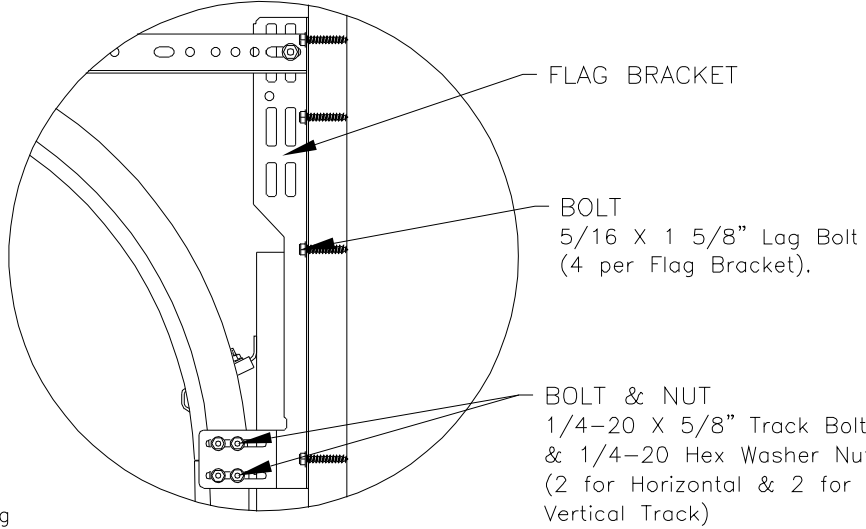
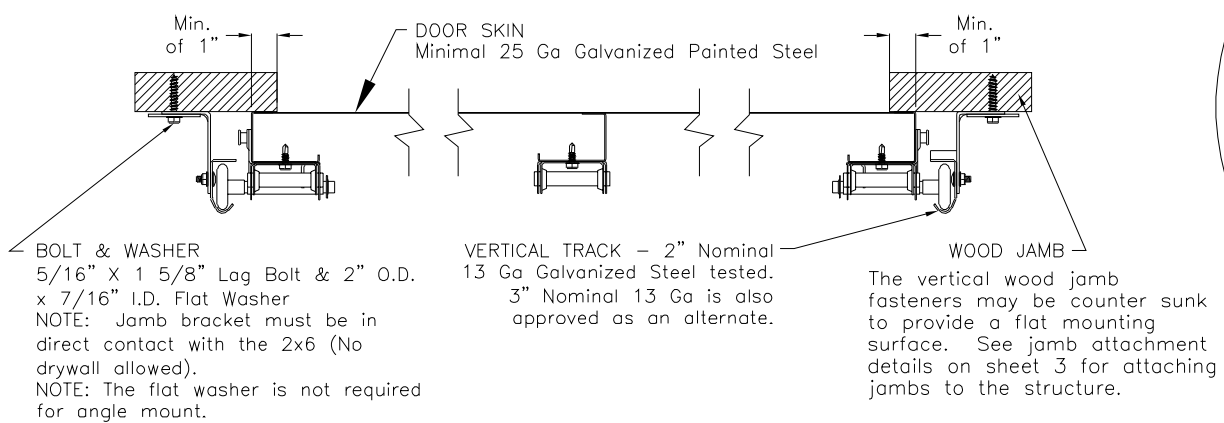
DETAIL G



IMPACT RESISTANT

John E. Scates, P.E.
2560 King Arthur Blvd. Ste 124-54
Lewisville, Texas 75056
Texas P.E. 56308/F2203

Professional Engineer seal provided only for verification of wind load construction details.



DETAIL H

Haas Door
A Nofziger Company

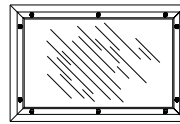
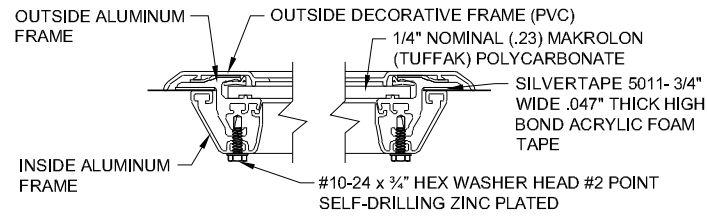
320 Sycamore
Wauseon, Ohio 43567
© Copyright 2014

DESCRIPTION:	
10' 2" PAN 2000 SERIES W/LITES WIND LOAD SECTIONAL DOOR DESIGN PRESSURE +35.0/-39.0 PSF	
DRAWING NO.: WLTl-2000-0122-08-35-39L	REV.: A
DRAWN BY: MVS	DATE DRAWN: 11/9/18
MODEL(S): See Sheet 3	REV. DATE: 3/7/22
SHEET: 2 OF 4	

MODEL NUMBERS AND LITE OPTIONS

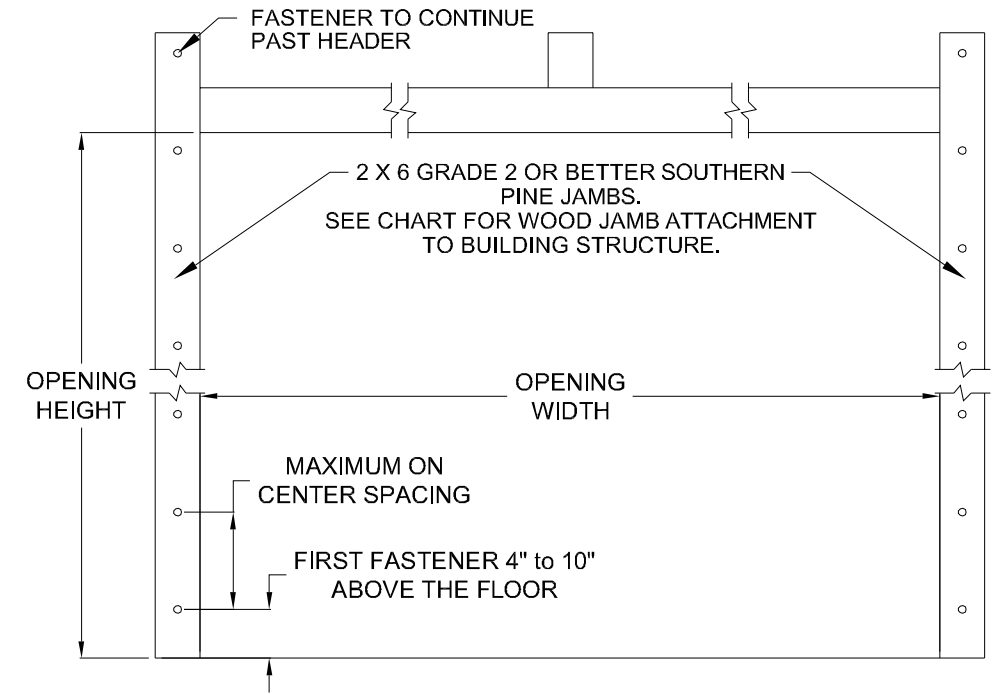
NOTE: IMPACT LITES NOT AVAILABLE IN INSULATED PAN DOORS.

MODEL NUMBERS AVAILABLE	LITE OPTIONS AVAILABLE				
	CARRIAGE HOUSE	RANCH	STANDARD	LARGE COMMERCIAL 24 x 12	SMALL COMMERCIAL 24 x 6
PAN C2011 SERIES					
PAN C2015 SERIES					
PAN C2411 SERIES					
PAN C2415 SERIES					
PAN C2511 SERIES					
PAN C2410 & R2410 SERIES			X		
PAN C2460 & R2460 SERIES					
PAN C2461 & R2461 SERIES					
PAN C2470 & R2470 SERIES					
PAN C2471 & R2471 SERIES					
PAN C2472 & R2472 SERIES					
PAN C2480 & R2480 SERIES			X		
PAN C2481 & R2481 SERIES			X		
PAN C2482 & R2482 SERIES			X		
PAN R2560 SERIES					
PAN R2561 SERIES					
PAN R2570 SERIES					
PAN R2571 SERIES					
PAN R2572 SERIES					
PAN R2580 SERIES			X		
PAN R2581 SERIES			X		
PAN R2582 SERIES			X		
	38 1/2" x 12 1/2"	38 1/2" x 10 1/2"	16 1/2" x 10 1/2"		
DAY LIGHT OPENING (DLO) - WIDE x TALL					



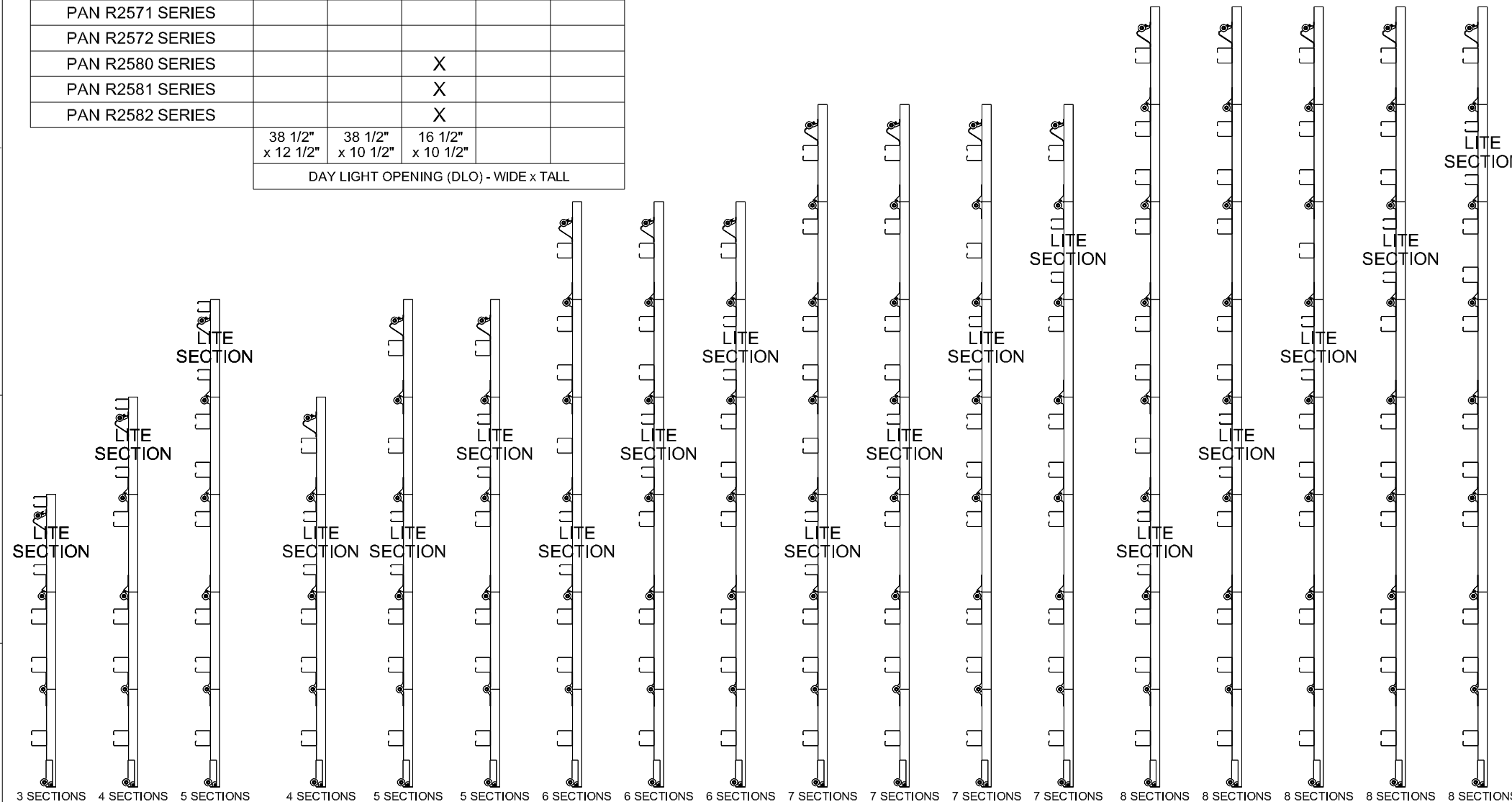
GLAZING DETAIL

NOTE: ALL GLAZING IS IMPACT RESISTANT MAKROLON (TUFFAK) GENERAL PURPOSE OR UV RESISTANT POLYCARBONATE WITH A 1/4" NOMINAL (.23) THICKNESS.



WOOD JAMB ATTACHMENT						
Building Structure	Fastener Type	Minimum Embedment	Minimum Edge Distance	Minimum on Center Spacing	Maximum on Center Spacing	Allowable Tension Load
Min. 2500 PSI to 4000 PSI Concrete	Tapcon + (PLUS) 1/4" w/ 1" OD washer	2"	2.50"	5.00"	24"	551
Southern Pine	3/8" Lag w/ 1 1/8" OD washer	1.50"	1.50"	1.50"	24"	620
Spruce Pine Fir	3/8" Lag w/ 1 1/8" OD washer	1.50"	1.50"	1.50"	24"	482

NOTE: 2X6 mounted to the wall must be Southern Pine Grade 2 or better.



WITH LITE SECTION ANYWHERE EXCEPT THE TOP AND BOTTOM SECTION
STRUT CONFIGURATION

IMPACT RESISTANT

John E. Scates, P.E.
2560 King Arthur Blvd. Ste 124-54
Lewisville, Texas 75056
Texas P.E. 56308/F2203

Professional Engineer seal provided only for verification of wind load construction details.



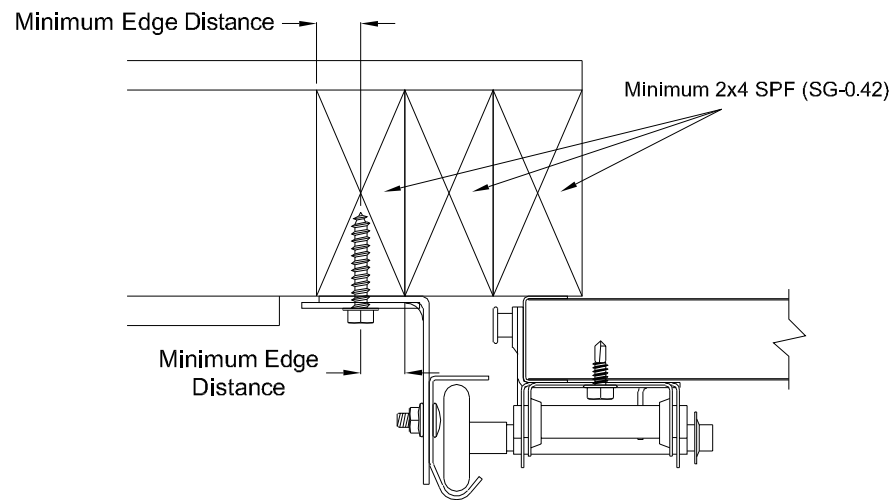
DESCRIPTION:
10' 2" PAN 2000 SERIES W/LITES WIND LOAD SECTIONAL DOOR
DESIGN PRESSURE +35.0-39.0 PSF

DRAWING NO.: WLTI-2000-0122-08-35-39L **REV.:** A

DRAWN BY: MVS **DATE DRAWN:** 11/9/18 **REV. DATE:** 3/7/22

MODEL(S): See Sheet 3 **SHEET: 3 OF 4**

320 Sycamore
Wauseon, Ohio 43567
© Copyright 2014



Direct Wood Mounting Detail

Bracket Mount Shown, Reverse and Continuous Angle Mount Also Approved As Alternate.

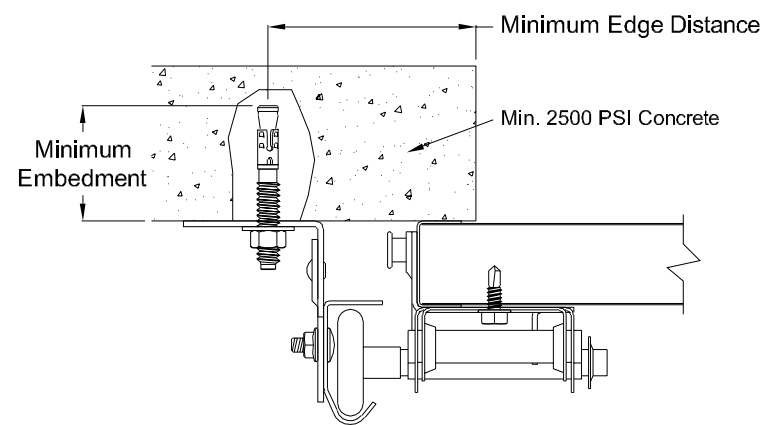
439 lbs. per anchor allowable load

5/16" Dia. Lag Screw w/1-1/8" O.D. Flat Washer (shall conform to ANSI/ASME standard B18.2.1)

Minimum Screw Length: Spruce-Pine-Fur (SPF) - 2-1/2"
Southern Pine - 1-5/8"

Minimum Edge Distance: 1/2"

Maximum on Center Spacing: 24"



Direct Concrete Mounting Detail

Continuous Angle Clip Mount Shown, Bracket and Reverse Continuous Angle Mount Also Approved As Alternate.

831 lbs. per anchor allowable load

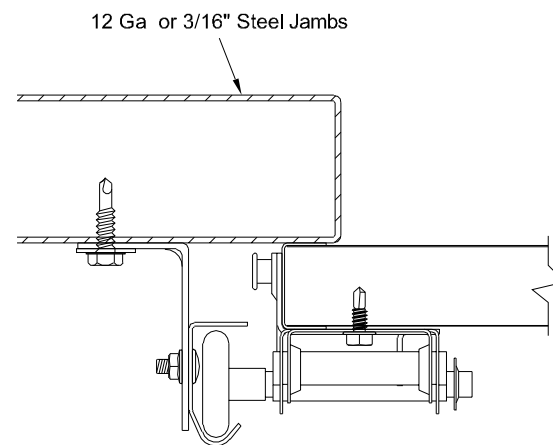
3/8" Dia. Ankr-Tite CCAT w/1-1/8" O.D. Flat Washer (by Wej-It Fastening Systems)

Minimum Embedment: 2-5/8"

Minimum Edge Distance: 2-1/2"

Minimum on Center Spacing: 6"

Maximum on Center Spacing: 24"



Direct Steel Mounting Detail

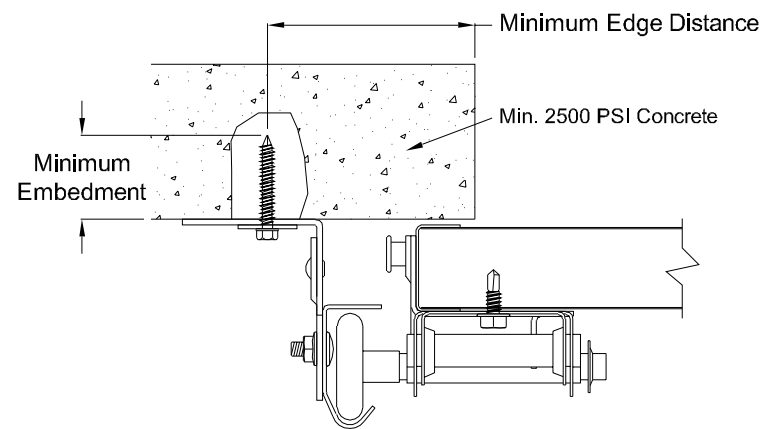
Bracket Mount Shown, Reverse and Continuous Angle Mount Also Approved As Alternate.

232 lbs. per anchor allowable load - 12 Ga Steel

569 lbs. per anchor allowable load - 3/16" Ga Steel
5/16"-12 Tek Self-Drilling Screw w/9/16" O.D. Flat Washer

12 Ga Maximum on Center Spacing: 16"

3/16" Maximum on Center Spacing: 24"



Direct Concrete Mounting Detail

Continuous Angle Clip Mount Shown, Bracket and Reverse Continuous Angle Mount Also Approved As Alternate.

562 lbs. per anchor allowable load

1/4" Dia. Concrete Self-Tapping & Wedge Anchor w/1" O.D. Flat Washer (Includes Tapcon+ (by ITW), Wedge-Bolt+ (by Powers Fasteners) & Red Head

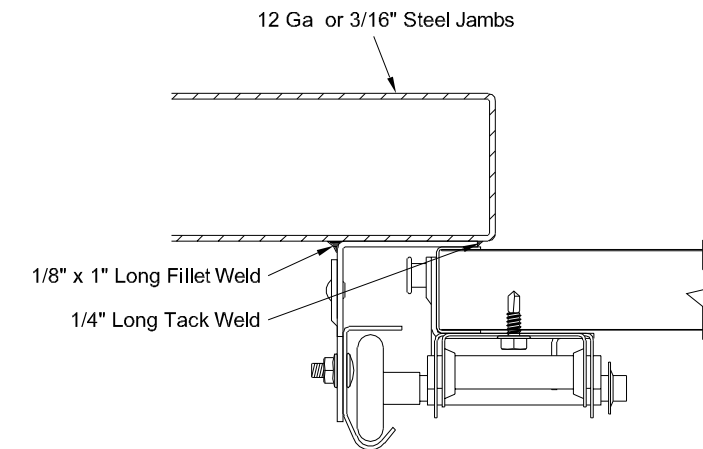
TruBolt wedge anchor (by ITW))

Minimum Embedment: 2"

Minimum Edge Distance: 2-1/2"

Minimum on Center Spacing: 5"

Maximum on Center Spacing: 24"



Direct Steel Mounting Detail

Reverse Continuous Angle Clip Mount Shown, Continuous Angle Mount Also Approved As Alternate.

1272 lbs. per anchor allowable load

1/8" Nom. x 1" Long Fillet and 1/4" Long Tack Weld (E60xx Electrodes Min.)

Welds performed by a certified welder or inspected by a certified welding inspector to verify integrity of the welds.

Maximum on Center Spacing: Apply welds at each roller location not to exceed 24"

IMPACT RESISTANT

John E. Scates, P.E.
2560 King Arthur Blvd. Ste 124-54
Lewisville, Texas 75056
Texas P.E. 56308/F2203

Professional Engineer seal provided only for verification of wind load construction details.



DESCRIPTION: 10' 2" PAN 2000 SERIES W/LITES WIND LOAD SECTIONAL DOOR DESIGN PRESSURE +35.0/-39.0 PSF	
DRAWING NO.: WLTI-2000-0122-08-35-39L	REV.: A
DRAWN BY: MVS	DATE DRAWN: 11/9/18
MODEL(S): See Sheet 3	REV. DATE: 3/7/22
SHEET: 4 OF 4	

320 Sycamore
Wauseon, Ohio 43567
© Copyright 2014