

NOTE: Track configuration above the door opening does not affect the wind load rating of the door.

Door Height 8' - 0" Shown
See chart below for other door heights

Door Width 10' - 2" Shown
See chart below for other door widths

This product has been evaluated per ANSI/DASMA 108 for static air pressure.

This product has been evaluated per ANSI/DASMA 115 for large missile impact and cyclic wind pressure.

Model Number
HT_10 & 2_10 SERIES
HT_12 & 2_12 SERIES
HT_32 & 2_32 SERIES
HT_33 & 2_33 SERIES

Door Widths Up To	Design Pressures		End Backers	Minimum Center		Impact Resistant
	+ psf	- psf		Stiles	Hinges	
8'-2"	48.0	-52.0	Single	1	1	YES
9'-2"	48.0	-52.0	Single	1	1	YES
10'-2"	48.0	-52.0	Single	1	1	YES

This product is available in narrower sizes with the same PSF and constructed as shown.

This product is designed and sold by PSF. The AHJ or Engineer of Record is responsible for determining the PSF required for any given site.

Jamb bracket quantities shown are for use with grade 2 or better southern pine jambs.

Supporting structural elements are to be designed by a registered professional engineer for specific wind loads.

Door Height	Total No. of Sections	Total # of Struts (When lite section is the top section. If not see the notice at the right)	Jamb Brkts/ Side
6'-0"	3	3	4
6'-0"	4	4	4
6'-3"	4	4	4
6'-6"	4	4	5
6'-9"	4	4	5
7'-0"	4	4	5
7'-3"	4	4	5
7'-6"	4	4	5
7'-6"	5	5	5
7'-9"	4	4	5
7'-9"	5	5	5
8'-0"	4	4	5
8'-0"	5	5	5

Maximum section height is 24 in.

Maximum door height is 20 ft.

All doors, even those above the tested height, are available with jamb brackets or commercial full angle. The maximum spacing of the jamb brackets/track clips should be maintained.

SEE SHEET 3 OF 4 FOR GLAZING DETAIL AND IMPACT LITE OPTIONS.

SINGLE STEEL END STILE
16 Ga Galvanized Steel

Slide Lock or Lock Bars
Detail G (sheet 2 of 4)
Manual door locks are required unless an automatic operator is installed.

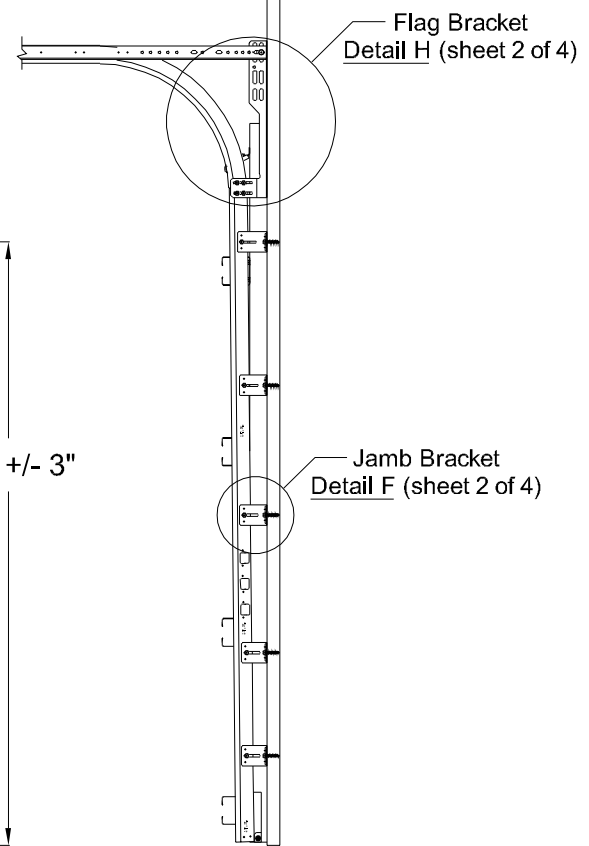
10 1/2" +/- 3"

65 1/2" +/- 3"

53 1/2" +/- 3"

38 1/2" +/- 3"

22 1/2" +/- 3"



Flag Bracket
Detail H (sheet 2 of 4)

Jamb Bracket
Detail F (sheet 2 of 4)

NOTICE:

These drawings are a supplement to the installation instructions for a standard door and only covers those procedures that vary from standard door installation. If these specific procedures are not followed, the door may not perform as designed.

NOTICE:

The only lite configurations available per section are shown on sheet 3 of 4. These configurations can be placed at different locations in the section. The lite sections of this door may be replaced with a solid section. In all cases the strut and stile configuration should remain the same.

IMPACT RESISTANT

COMPLIES WITH IBC/IRC 2018

Professional Engineer seal provided only for verification of wind load construction details.



DESCRIPTION:
10' 2" HT 600, 700, & 2000 SERIES W/IMPACT RESISTANT LITES WIND LOAD SECTIONAL DOOR DESIGN PRESSURE +48.0/-52.0 PSF

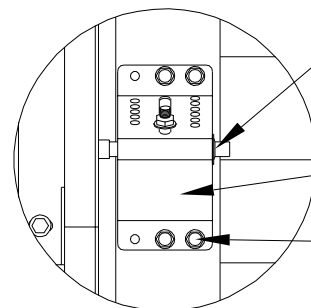
DRAWING NO.: WLT1-0600-0122-08-48-52L1 REV. A

DRAWN BY: MVS DATE DRAWN: 10/25/18 REV. DATE: 2/28/22

MODEL(S): See Sheet 3 SHEET: 1 OF 4

320 Sycamore
Wauseon, Ohio 43567
© Copyright 2014

John E. Scates, P.E.
2560 King Arthur Blvd. Ste 124-54
Lewisville, Texas 75056
Texas P.E. 56308/F2203

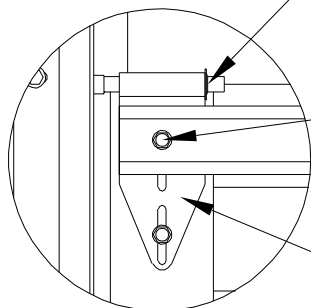


PUSH NUT
7/16"
See DETAIL K for push nut placement.

ADJUSTABLE TOP FIXTURE
12 Ga

TEK SCREW
1/4" X 3/4" Hex Washer Head Self Drilling (4 per Bracket)

DETAIL A

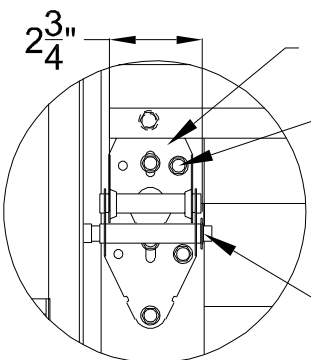


PUSH NUT
7/16"
See DETAIL K for push nut placement.

TEK SCREW
1/4" X 3/4" Hex Washer Head Self Drilling (2 per Bracket)

LOW HEADROOM TOP BRACKET - 12 Ga

LOW HEADROOM TOP BRACKET

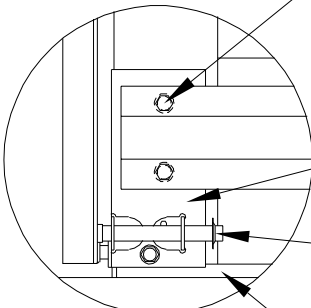


END HINGE
14 Ga Galvanized Steel Minimum

TEK SCREW
1/4" X 3/4" Hex Washer Head Self Drilling (6 per Hinge) (One through the strut and the top of the end hinge)

PUSH NUT
7/16"
See DETAIL K for push nut placement.

DETAIL B



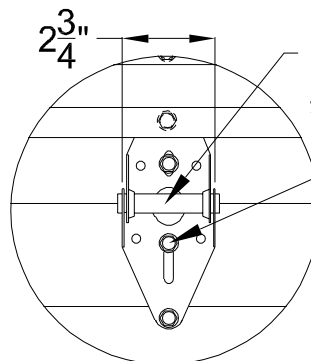
TEK SCREW
1/4" X 3/4" Hex Washer Head Self Drilling (3 per Bottom Bracket) (Two through the strut and the bottom bracket)

BOTTOM BRACKET
13 Ga Galvanized Steel

PUSH NUT
7/16"
See DETAIL K for push nut placement.

BOTTOM SEAL

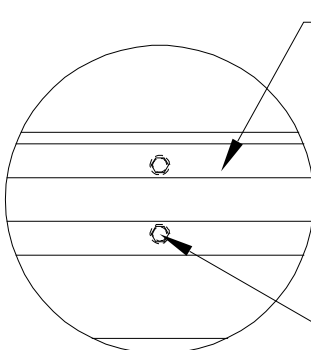
DETAIL C



INTERMEDIATE HINGE
18 or 14 Ga Galvanized Steel

TEK SCREW
1/4" X 3/4" Hex Washer Head Self Drilling (4 per Hinge) (One through the strut and the top of the intermediate hinge)

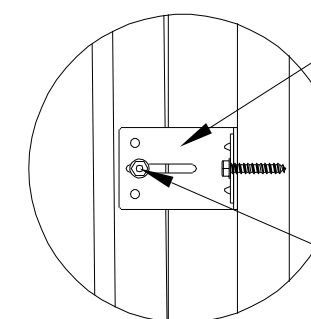
DETAIL D



3 1/4" x 3 1/4" E STRUT
18 Ga 70 KSI Galvanized Steel

TEK SCREW
1/4" X 3/4" Hex Washer Head Self Drilling (2 per End & Intermediate Stiles)

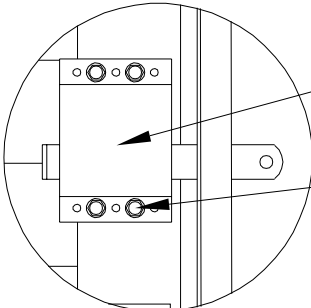
DETAIL E



JAMB BRACKET
12 Ga Galvanized Steel

BOLT & NUT
1/4-20 X 5/8" Carriage Bolt & 1/4-20 Hex Washer Nut (1 per Jamb Bracket)

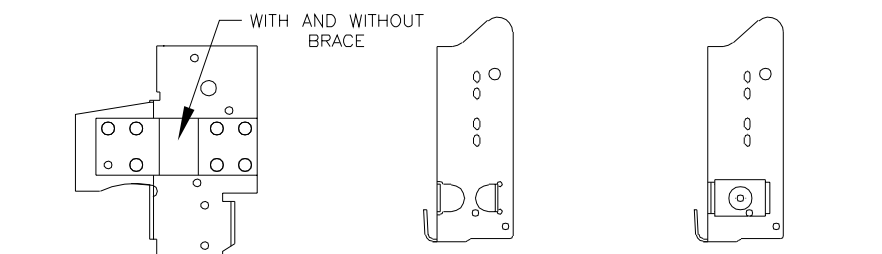
DETAIL F



SLIDE LOCK or LOCK BARS (not required with operator)

TEK SCREW
1/4" X 3/4" Hex Washer Head Self Drilling (4 per Slide Lock)

DETAIL G



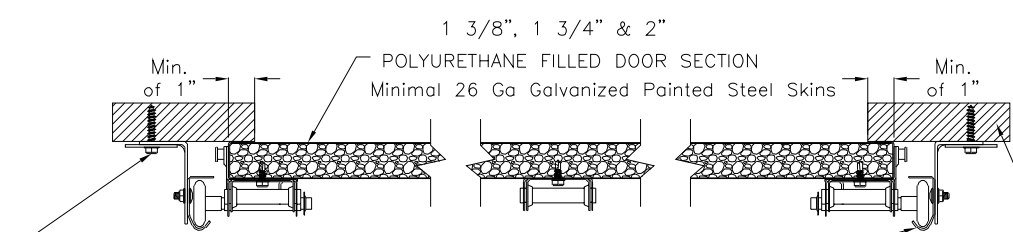
RESIDENTIAL & LIGHT COMMERCIAL For Low Headroom With 2" Track and Single End Stiles

COMMERCIAL For Standard, High & Vertical Lift With 2" Track and Single End Stiles

COMMERCIAL For Standard, High & Vertical Lift With 3" Track and Single End Stiles

ALTERNATE BOTTOM BRACKETS

NOTE: The bottom bracket tested (shown in DETAIL C) is the lightest bracket available.



1 3/8", 1 3/4" & 2"

Min. of 1"

POLYURETHANE FILLED DOOR SECTION

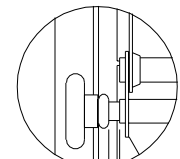
Minimal 26 Ga Galvanized Painted Steel Skins

Min. of 1"

BOLT & WASHER
5/16" X 1 5/8" Lag Bolt & 2" O.D. x 7/16" I.D. Flat Washer
NOTE: Jamb bracket must be in direct contact with the 2x6 (No drywall allowed).
NOTE: The flat washer is not required for angle mount.

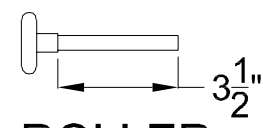
VERTICAL TRACK - 2" Nominal
13 Ga Galvanized Steel tested. 3" Nominal 13 Ga is also approved as an alternate.

WOOD JAMB
The vertical wood jamb fasteners may be counter sunk to provide a flat mounting surface. See jamb attachment details on sheet 3 for attaching jambs to the structure.



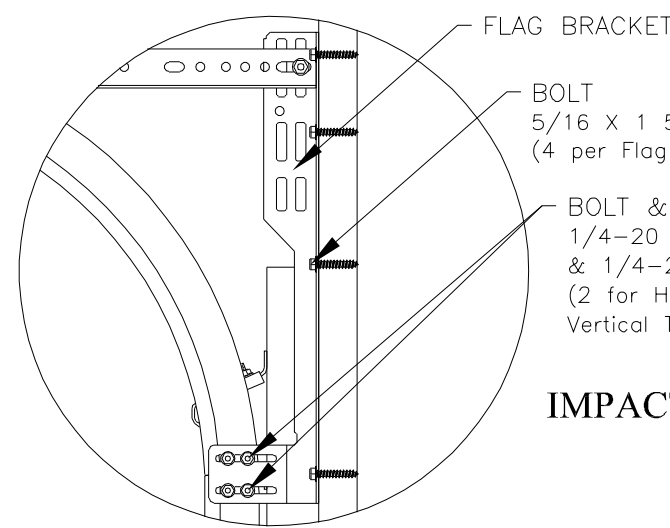
Maximum 1/2"
DETAIL K

There should be a space of maximum 1/2" between the roller hub and the outside edge of the roller holder which is set by the push nut.



3 1/2"
ROLLER
2" Diameter Nominal Eleven Ball Nylon or Ten Ball Steel with a Minimum Workable Shaft Length Shown.

NOTE: Details on some views omitted for clarity. Double end stiles and end hardware may be provided on wider or heavier doors.



FLAG BRACKET

BOLT
5/16 X 1 5/8" Lag Bolt (4 per Flag Bracket).

BOLT & NUT
1/4-20 X 5/8" Track Bolt & 1/4-20 Hex Washer Nut (2 for Horizontal & 2 for Vertical Track)

IMPACT RESISTANT

John E. Scates, P.E.
2560 King Arthur Blvd. Ste 124-54
Lewisville, Texas 75056
Texas P.E. 56308/F2203

Professional Engineer seal provided only for verification of wind load construction details.



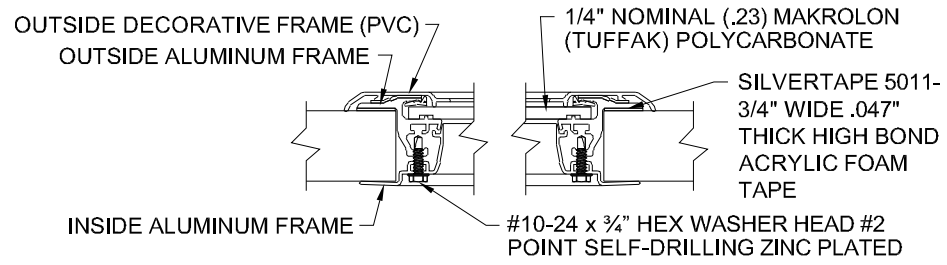
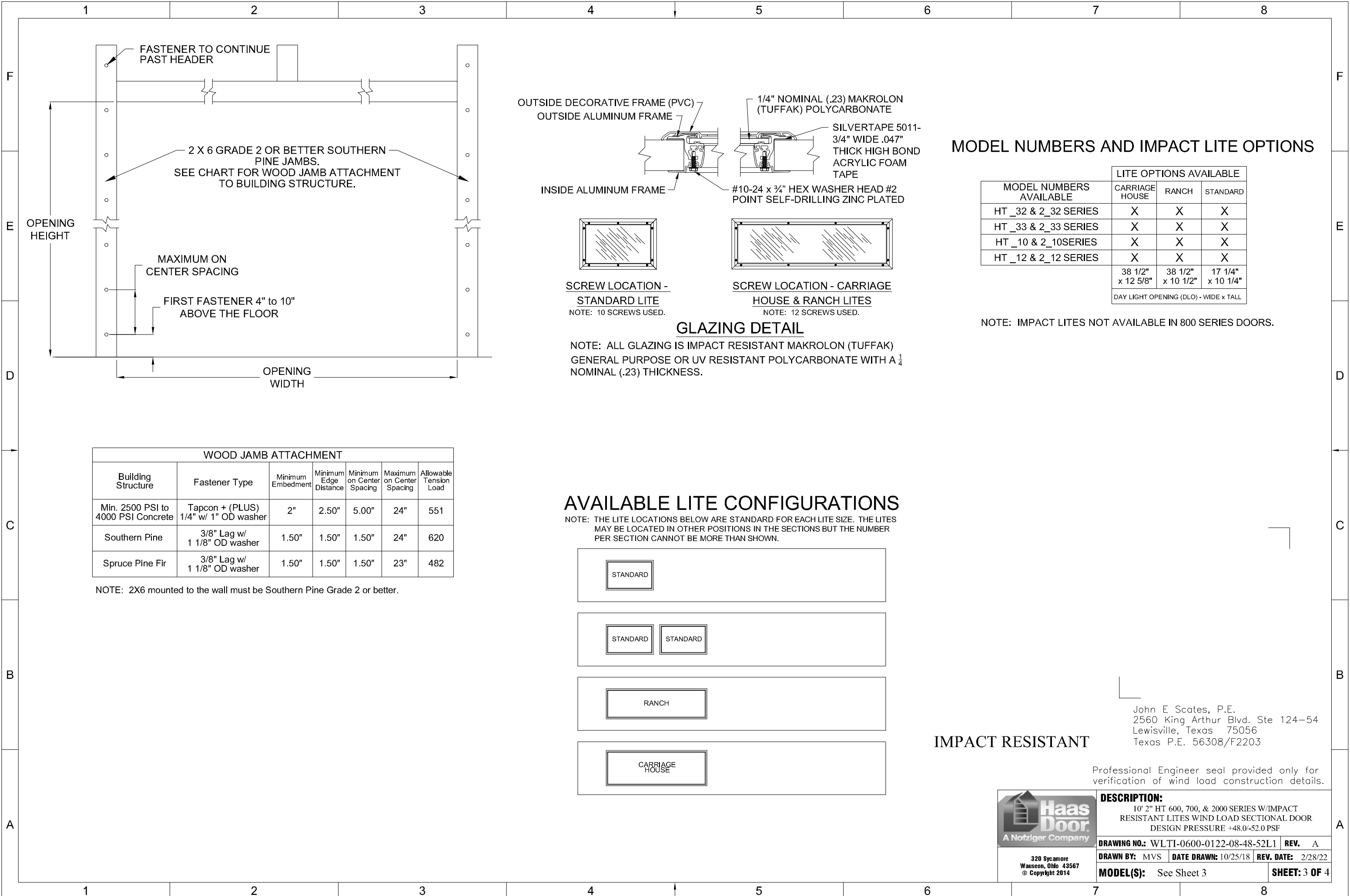
DESCRIPTION:
10' 2" HT 600, 700, & 2000 SERIES W/IMPACT RESISTANT LITES WIND LOAD SECTIONAL DOOR DESIGN PRESSURE +48.0-52.0 PSF

DRAWING NO.: WLTI-0600-0122-08-48-52L1 REV. A

DRAWN BY: MVS DATE DRAWN: 10/25/18 REV. DATE: 2/28/22

MODEL(S): See Sheet 3 SHEET: 2 OF 4

320 Sycamore
Wauseon, Ohio 43567
© Copyright 2014



GLAZING DETAIL

NOTE: ALL GLAZING IS IMPACT RESISTANT MAKROLON (TUFFAK) GENERAL PURPOSE OR UV RESISTANT POLYCARBONATE WITH A 1/4 NOMINAL (.23) THICKNESS.

MODEL NUMBERS AND IMPACT LITE OPTIONS

MODEL NUMBERS AVAILABLE	LITE OPTIONS AVAILABLE		
	CARRIAGE HOUSE	RANCH	STANDARD
HT_32 & 2_32 SERIES	X	X	X
HT_33 & 2_33 SERIES	X	X	X
HT_10 & 2_10SERIES	X	X	X
HT_12 & 2_12 SERIES	X	X	X
	38 1/2" x 12 5/8"	38 1/2" x 10 1/2"	17 1/4" x 10 1/4"
DAY LIGHT OPENING (DLO) - WIDE x TALL			

NOTE: IMPACT LITES NOT AVAILABLE IN 800 SERIES DOORS.

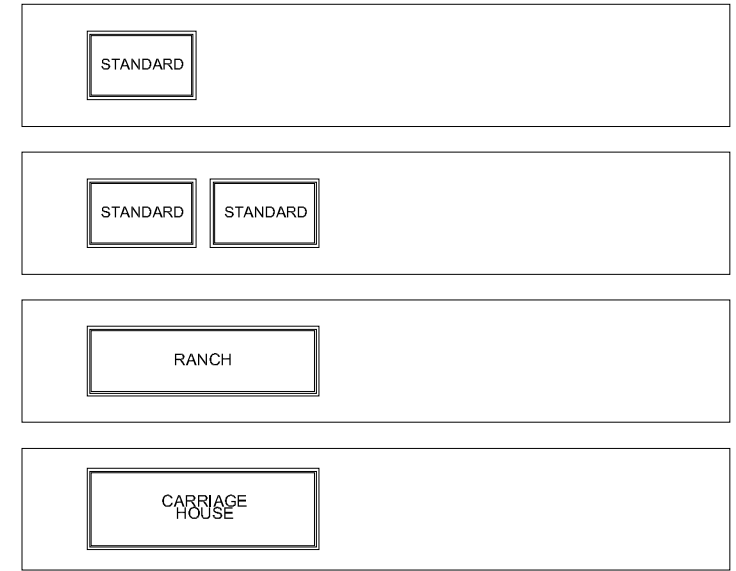
WOOD JAMB ATTACHMENT

Building Structure	Fastener Type	Minimum Embedment	Minimum Edge Distance	Minimum on Center Spacing	Maximum on Center Spacing	Allowable Tension Load
Min. 2500 PSI to 4000 PSI Concrete	Tapcon + (PLUS) 1/4" w/ 1" OD washer	2"	2.50"	5.00"	24"	551
Southern Pine	3/8" Lag w/ 1 1/8" OD washer	1.50"	1.50"	1.50"	24"	620
Spruce Pine Fir	3/8" Lag w/ 1 1/8" OD washer	1.50"	1.50"	1.50"	23"	482

NOTE: 2X6 mounted to the wall must be Southern Pine Grade 2 or better.

AVAILABLE LITE CONFIGURATIONS

NOTE: THE LITE LOCATIONS BELOW ARE STANDARD FOR EACH LITE SIZE. THE LITES MAY BE LOCATED IN OTHER POSITIONS IN THE SECTIONS BUT THE NUMBER PER SECTION CANNOT BE MORE THAN SHOWN.



IMPACT RESISTANT

John E. Scates, P.E.
2560 King Arthur Blvd. Ste 124-54
Lewisville, Texas 75056
Texas P.E. 56308/F2203

Professional Engineer seal provided only for verification of wind load construction details.

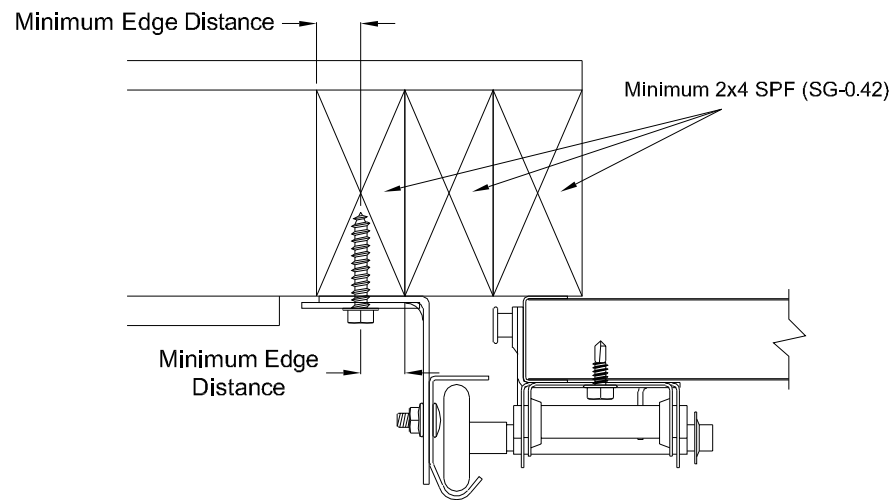
DESCRIPTION:
10' 2" HT 600, 700, & 2000 SERIES W/IMPACT RESISTANT LITES WIND LOAD SECTIONAL DOOR DESIGN PRESSURE +48.0/-52.0 PSF

DRAWING NO.: WLTI-0600-0122-08-48-52L1 **REV.:** A

DRAWN BY: MVS **DATE DRAWN:** 10/25/18 **REV. DATE:** 2/28/22

MODEL(S): See Sheet 3 **SHEET: 3 OF 4**

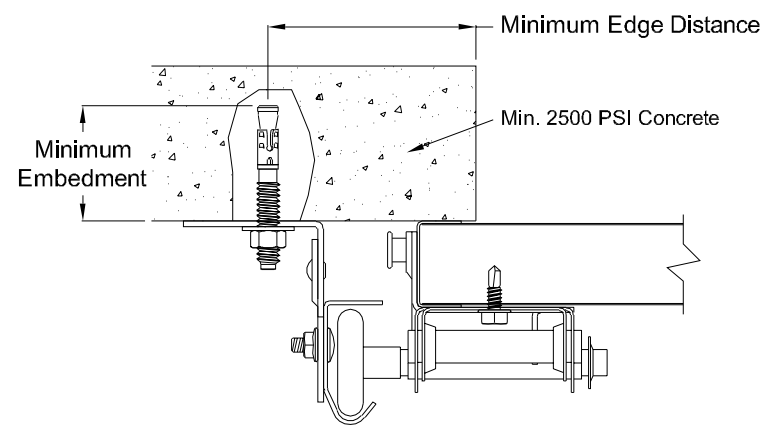
320 Sycamore
Wauseon, Ohio 43567
© Copyright 2014



Direct Wood Mounting Detail

Bracket Mount Shown, Reverse and Continuous Angle Mount Also Approved As Alternate.

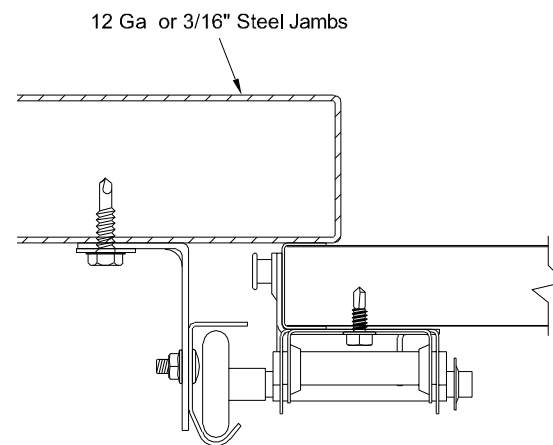
- 439 lbs. per anchor allowable load
- 5/16" Dia. Lag Screw w/1-1/8" O.D. Flat Washer (shall conform to ANSI/ASME standard B18.2.1)
- Minimum Screw Length: Spruce-Pine-Fur (SPF) - 2-1/2"
Southern Pine - 1-5/8"
- Minimum Edge Distance: 1/2"
- Maximum on Center Spacing: 22"



Direct Concrete Mounting Detail

Continuous Angle Clip Mount Shown, Bracket and Reverse Continuous Angle Mount Also Approved As Alternate.

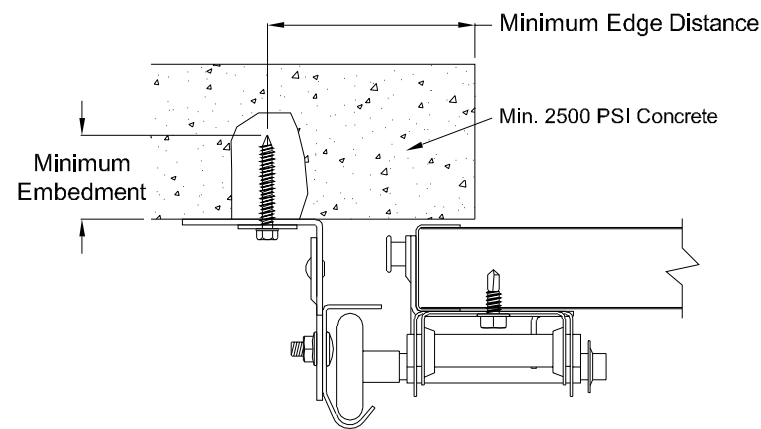
- 831 lbs. per anchor allowable load
- 3/8" Dia. Ankr-Tite CCAT w/1-1/8" O.D. Flat Washer (by Wej-It Fastening Systems)
- Minimum Embedment: 2-5/8"
- Minimum Edge Distance: 2-1/2"
- Minimum on Center Spacing: 6"
- Maximum on Center Spacing: 24"



Direct Steel Mounting Detail

Bracket Mount Shown, Reverse and Continuous Angle Mount Also Approved As Alternate.

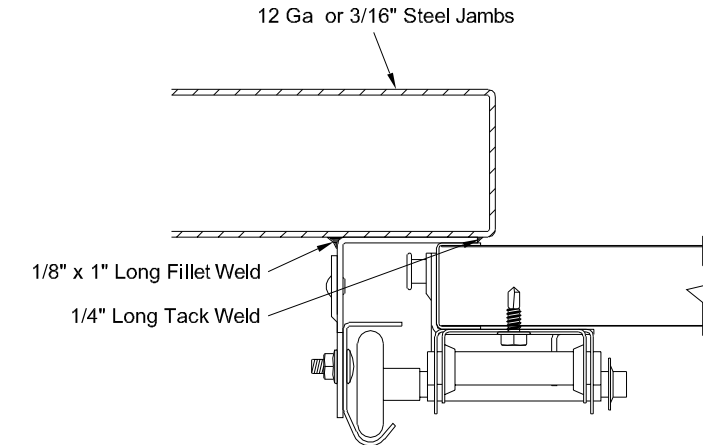
- 232 lbs. per anchor allowable load - 12 Ga Steel
- 569 lbs. per anchor allowable load - 3/16" Ga Steel
- 5/16"-12 Tek Self-Drilling Screw w/9/16" O.D. Flat Washer
- 12 Ga Maximum on Center Spacing: 11"
- 3/16" Maximum on Center Spacing: 24"



Direct Concrete Mounting Detail

Continuous Angle Clip Mount Shown, Bracket and Reverse Continuous Angle Mount Also Approved As Alternate.

- 562 lbs. per anchor allowable load
- 1/4" Dia. Concrete Self-Tapping & Wedge Anchor w/1" O.D. Flat Washer (Includes Tapcon+ (by ITW), Wedge-Bolt+ (by Powers Fasteners) & Red Head TruBolt wedge anchor (by ITW))
- Minimum Embedment: 2"
- Minimum Edge Distance: 2-1/2"
- Minimum on Center Spacing: 5"
- Maximum on Center Spacing: 24"



Direct Steel Mounting Detail

Reverse Continuous Angle Clip Mount Shown, Continuous Angle Mount Also Approved As Alternate.

- 1272 lbs. per anchor allowable load
- 1/8" Nom. x 1" Long Fillet and 1/4" Long Tack Weld (E60xx Electrodes Min.)
- Welds performed by a certified welder or inspected by a certified welding inspector to verify integrity of the welds.
- Maximum on Center Spacing: Apply welds at each roller location not to exceed 24"

IMPACT RESISTANT

John E. Scates, P.E.
2560 King Arthur Blvd. Ste 124-54
Lewisville, Texas 75056
Texas P.E. 56308/F2203

Professional Engineer seal provided only for verification of wind load construction details.



DESCRIPTION:
10' 2" HT 600, 700, & 2000 SERIES W/IMPACT RESISTANT LITES WIND LOAD SECTIONAL DOOR DESIGN PRESSURE +48.0/-52.0 PSF

DRAWING NO.: WLTI-0600-0122-08-48-52L1 **REV.:** A

DRAWN BY: MVS **DATE DRAWN:** 10/25/18 **REV. DATE:** 2/28/22

MODEL(S): See Sheet 3 **SHEET: 4 OF 4**

320 Sycamore
Wauseon, Ohio 43567
© Copyright 2014