

This product has been evaluated per ANSI/DASMA 108 for static air pressure.  
This product has been evaluated per ANSI/DASMA 115 for large missile impact and cyclic wind pressure.

Jamb bracket quantities shown are for use with grade 2 or better southern pine jambs.  
Supporting structural elements are to be designed by a registered professional engineer for specific wind loads.

		Model Number							
		HT_60 & 2_60 SERIES							
		HT_61 & 2_61 SERIES							
		HT_63 & 2_63 SERIES							
		HT_64 & 2_64 SERIES							
		HT_70 & 2_70 SERIES				HT_10 & 2_10 SERIES			
		HT_71 & 2_71 SERIES				HT_12 & 2_12 SERIES			
HT_80 & 2_80 SERIES		HT_72 & 2_72 SERIES				HT_14 & 2_14 SERIES			
HT_81 & 2_81 SERIES		HT_73 & 2_73 SERIES				HT_16 & 2_16 SERIES			
HT_82 & 2_82 SERIES		HT_74 & 2_74 SERIES				HT_32 & 2_32 SERIES			
HT_90 & 2_90 SERIES		American Tradition 900/9000 SERIES				HT_33 & 2_33 SERIES			

Door Widths Up To	Design Pressures		End Backers	Minimum Center		Minimum Center		Minimum Center		Impact Resistant
	+ psf	- psf		Stiles	Hinges	Stiles	Hinges	Stiles	Hinges	
8'-2"	41.1	-46.4	Single	1	1	1	1	1	1	YES
9'-2"	41.1	-46.4	Single	1	1	1	1	1	1	YES

This product is available in narrower sizes with the same PSF and constructed as shown.  
This product is designed and sold by PSF. The AHJ or Engineer of Record is responsible for determining the PSF required for any given site.

Door Height	Total # of Sections	Total # of Struts	Jamb Brkts per Side
6'-0"	3	3	3
6'-0"	4	4	3
6'-3"	4	4	3
6'-6"	4	4	4
6'-9"	4	4	4
7'-0"	4	4	4
7'-3"	4	4	4
7'-6"	4	4	4
7'-6"	5	5	4
7'-9"	4	4	4
7'-9"	5	5	4
8'-0"	4	4	4
8'-0"	5	5	4

Maximum section height is 24 in.  
Maximum door height is 20 ft.  
All doors, even those above the tested height, are available with jamb brackets or commercial full angle. The maximum spacing of the jamb brackets/track clips should be maintained.

**NOTICE:**  
These drawings are a supplement to the installation instructions for a standard door and only covers those procedures that vary from standard door installation. If these specific procedures are not followed, the door may not perform as designed.

### IMPACT RESISTANT

COMPLIES WITH IBC/IRC 2018 Professional Engineer seal provided only for verification of wind load construction details.

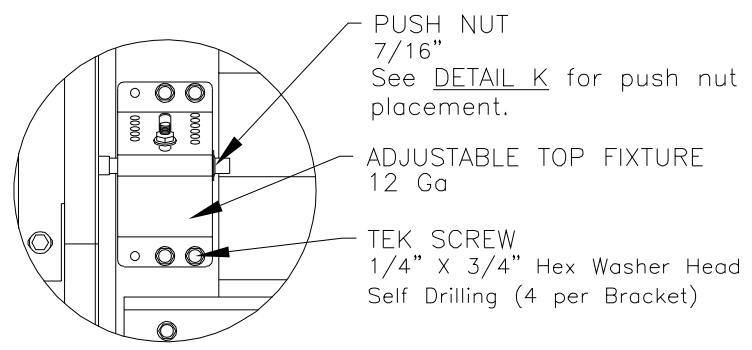
John E. Scates, P.E.  
2560 King Arthur Blvd. Ste 124-54  
Lewisville, Texas 75056  
Texas P.E. 56308/F2203



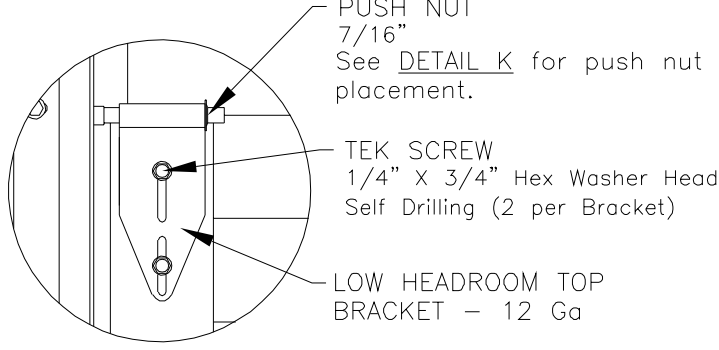
**DESCRIPTION:**  
9' 2" HT 600, 700, 2000, 800 & 900/9000 AMERICAN TRADITION SERIES WIND LOAD SECTIONAL DOOR  
DESIGN PRESSURE +41.1/-46.4 PSF

<b>DRAWING NO.:</b> WLT-0600-0110-08-41-46	<b>REV.:</b> A
<b>DRAWN BY:</b> MVS	<b>DATE DRAWN:</b> 10/25/18
<b>MODEL(S):</b> See Sheet 3	<b>REV. DATE:</b> 2/23/22
<b>SHEET: 1 OF 4</b>	

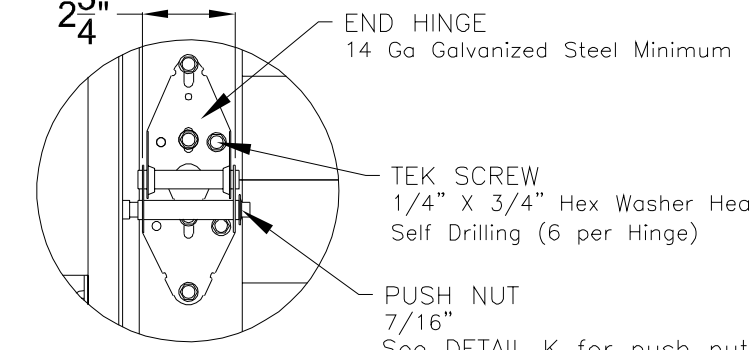
320 Sycamore  
Wauseon, Ohio 43567  
© Copyright 2014



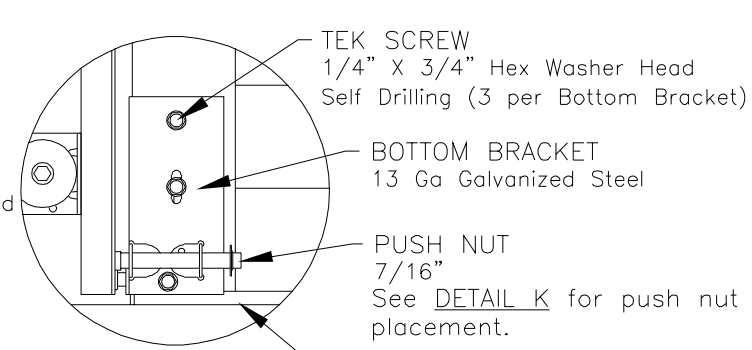
**DETAIL A**



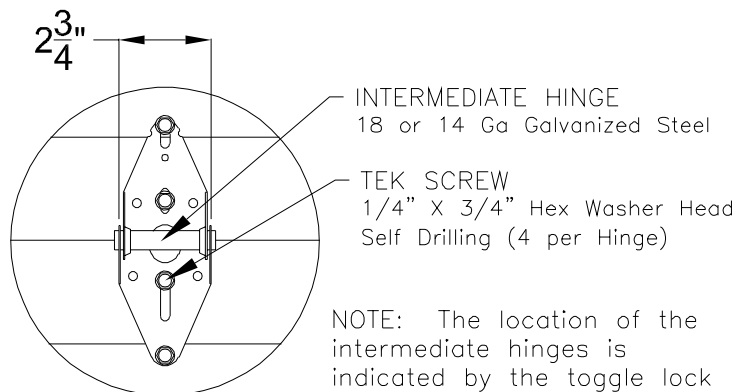
**LOW HEADROOM TOP BRACKET**



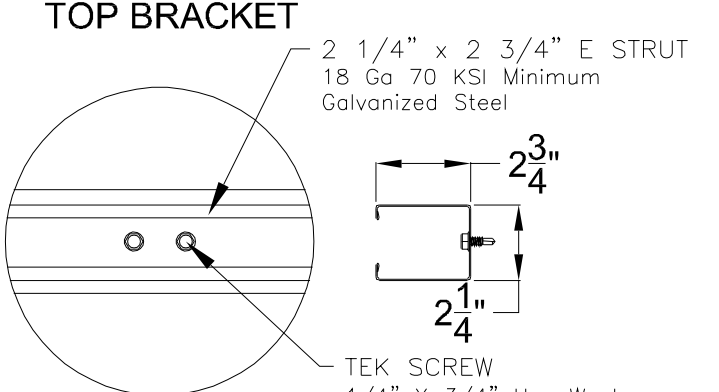
**DETAIL B**



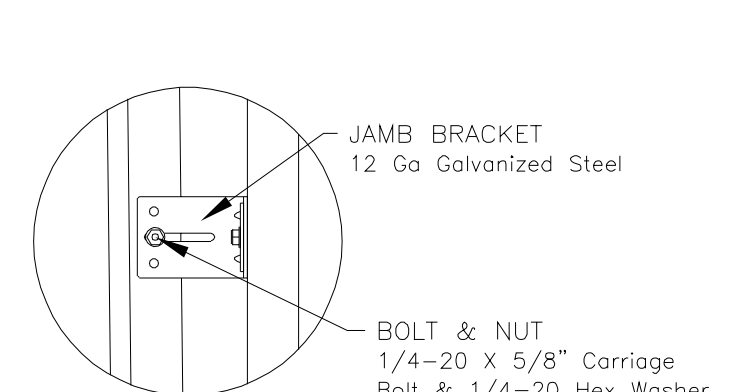
**DETAIL C**



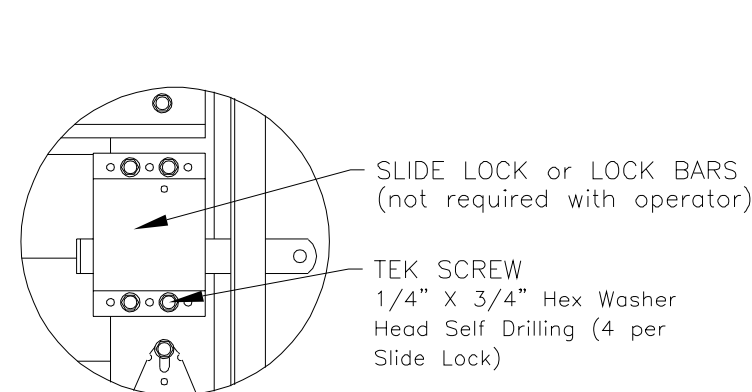
**DETAIL D**



**DETAIL E**

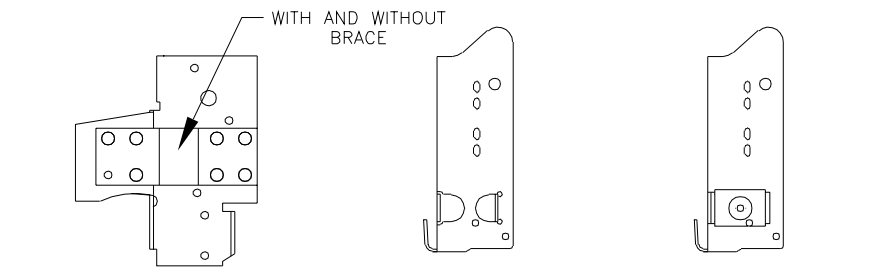


**DETAIL F**



**DETAIL G**

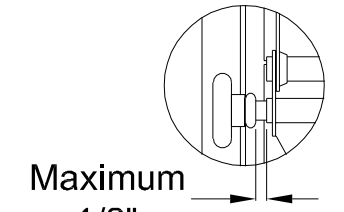
NOTE: The location of the intermediate hinges is indicated by the toggle lock dimples at the top of each section.



RESIDENTIAL & LIGHT COMMERCIAL For Low Headroom With 2" Track and Single End Stiles  
 COMMERCIAL For Standard, High & Vertical Lift With 2" Track and Single End Stiles  
 COMMERCIAL For Standard, High & Vertical Lift With 3" Track and Single End Stiles

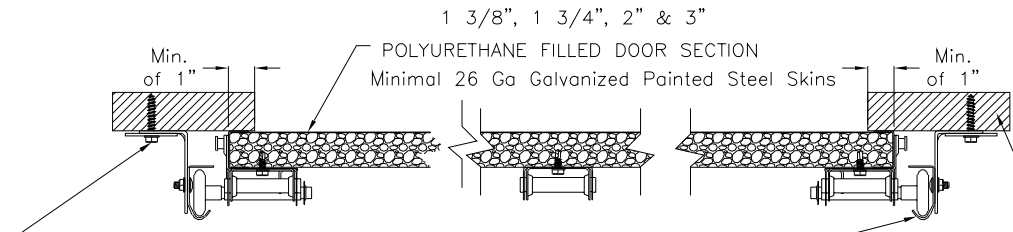
**ALTERNATE BOTTOM BRACKETS**

NOTE: The bottom bracket tested (shown in DETAIL C) is the lightest bracket available.

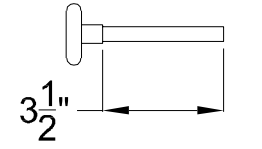


**DETAIL K**

There should be a space of maximum 1/2" between the roller hub and the outside edge of the roller holder which is set by the push nut.



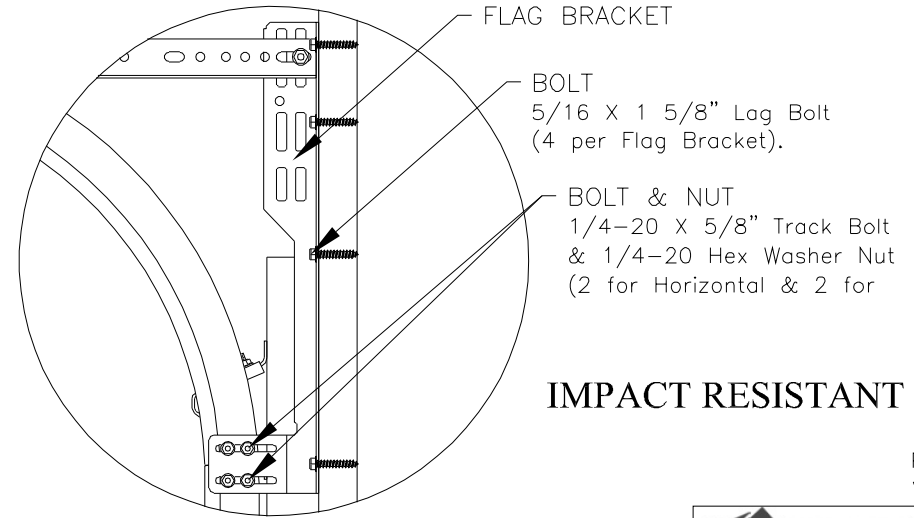
BOLT & WASHER 5/16" X 1 5/8" Lag Bolt & 2" O.D. x 7/16" I.D. Flat Washer  
 NOTE: Jamb bracket must be in direct contact with the 2x6 (No drywall allowed).  
 NOTE: The flat washer is not required for angle mount.  
 VERTICAL TRACK - 2" Nominal 13 Ga Galvanized Steel tested. 3" Nominal 13 Ga is also approved as an alternate.  
 WOOD JAMB The vertical wood jamb fasteners may be counter sunk to provide a flat mounting surface. See jamb attachment details on sheet 3 for attaching jamba to the structure.



**ROLLER**

2" Diameter Nominal Eleven Ball Nylon or Ten Ball Steel with a Minimum Workable Shaft Length Shown

NOTE: Details on some views omitted for clarity. Double end stiles and end hardware may be provided on wider or heavier doors.



**DETAIL H**

**IMPACT RESISTANT**

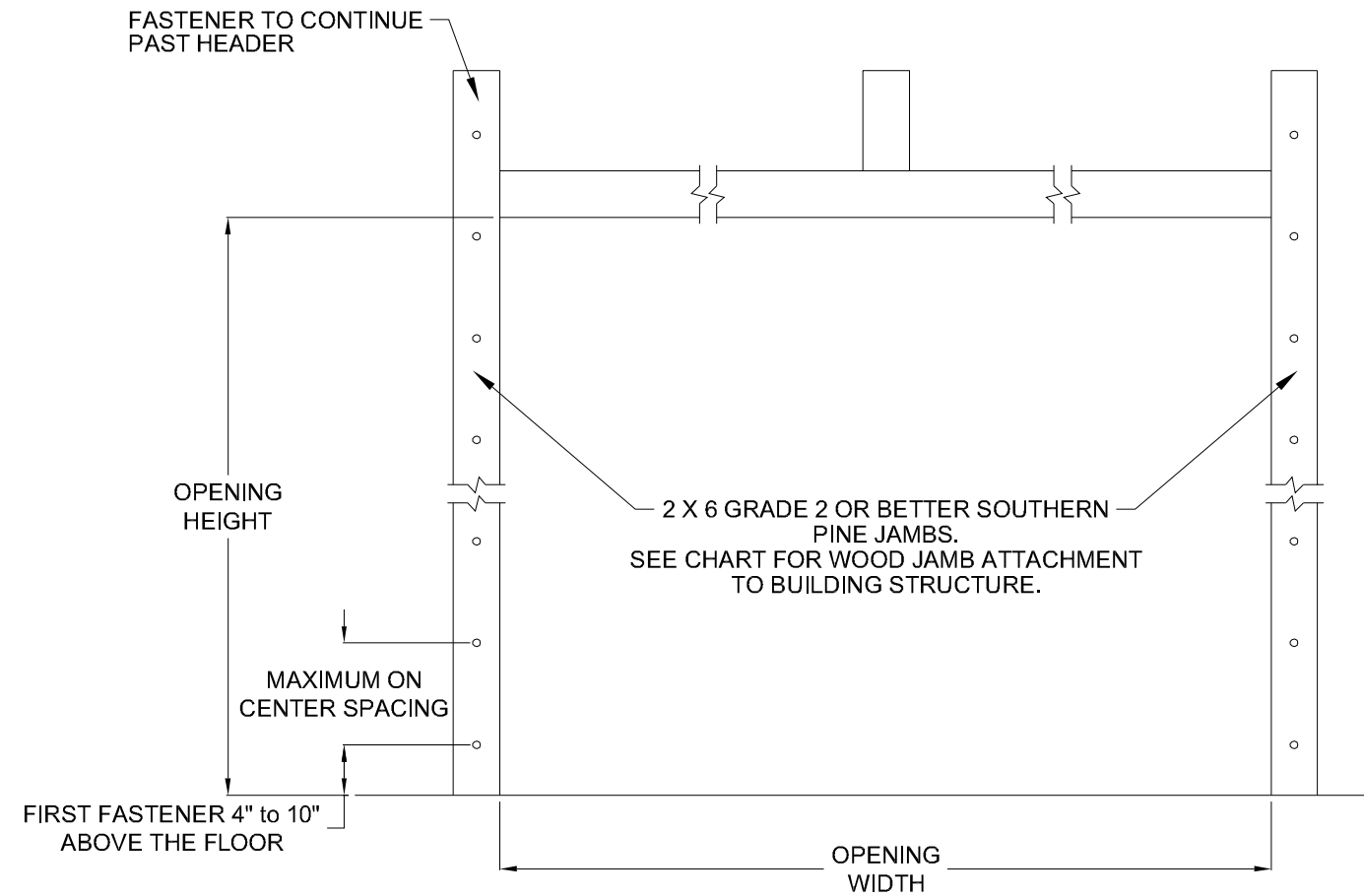
John E. Scates, P.E.  
 2560 King Arthur Blvd. Ste 124-54  
 Lewisville, Texas 75056  
 Texas P.E. 56308/F2203

Professional Engineer seal provided only for verification of wind load construction details.

<p>320 Sycamore        Wauseon, Ohio 43567        © Copyright 2014</p>	<b>DESCRIPTION:</b> 9' 2" HT 600, 700, 2000, 800 & 900/9000 AMERICAN TRADITION SERIES WIND LOAD SECTIONAL DOOR DESIGN PRESSURE +41.1/-46.4 PSF	
	<b>DRAWING NO.:</b> WLTl-0600-0110-08-41-46	<b>REV.:</b> A
	<b>DRAWN BY:</b> MVS	<b>DATE DRAWN:</b> 10/25/18
	<b>MODEL(S):</b> See Sheet 3	<b>REVISION DATE:</b> 2/23/22
		<b>SHEET: 2 OF 4</b>

# MODEL NUMBERS

MODEL NUMBERS AVAILABLE
HT_14 & 2_14 SERIES
HT_16 & 2_16 SERIES
HT_32 & 2_32 SERIES
HT_33 & 2_33 SERIES
HT_10 & 2_10SERIES
HT_12 & 2_12 SERIES
HT_60 & 2_60 SERIES
HT_61 & 2_61 SERIES
HT_63 & 2_63 SERIES
HT_64 & 2_64 SERIES
HT_70 & 2_70 SERIES
HT_71 & 2_71 SERIES
HT_72 & 2_72 SERIES
HT_73 & 2_73 SERIES
HT_74 & 2_74 SERIES
HT_80 & 2_80 SERIES
HT_81 & 2_81 SERIES
HT_82 & 2_82 SERIES
HT_90 & 2_90 SERIES
American Tradition 900/9000 SERIES



WOOD JAMB ATTACHMENT						
Building Structure	Fastener Type	Minimum Embedment	Minimum Edge Distance	Minimum on Center Spacing	Maximum on Center Spacing	Allowable Tension Load
Min. 2500 PSI to 4000 PSI Concrete	Tapcon + (PLUS) 1/4" w/ 1" OD washer	2"	2.50"	5.00"	24"	551
Southern Pine	3/8" Lag w/ 1 1/8" OD washer	1.50"	1.50"	1.50"	24"	620
Spruce Pine Fir	3/8" Lag w/ 1 1/8" OD washer	1.50"	1.50"	1.50"	24"	482

NOTE: 2X6 mounted to the wall must be Southern Pine Grade 2 or better.

## IMPACT RESISTANT

John E. Scates, P.E.  
 2560 King Arthur Blvd. Ste 124-54  
 Lewisville, Texas 75056  
 Texas P.E. 56308/F2203

Professional Engineer seal provided only for verification of wind load construction details.



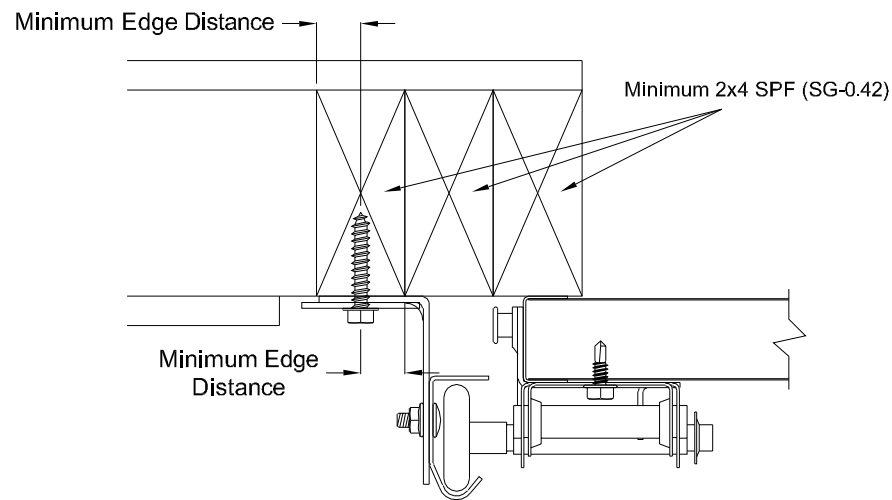
**DESCRIPTION:**  
 9' 2" HT 600, 700, 2000, 800 & 900/9000 AMERICAN TRADITION SERIES WIND LOAD SECTIONAL DOOR  
 DESIGN PRESSURE +41.1/-46.4 PSF

**DRAWING NO.:** WLTI-0600-0110-08-41-46 **REV.:** A

**DRAWN BY:** MVS **DATE DRAWN:** 10/25/18 **REV. DATE:** 2/23/22

**MODEL(S):** See Sheet 3 **SHEET: 3 OF 4**

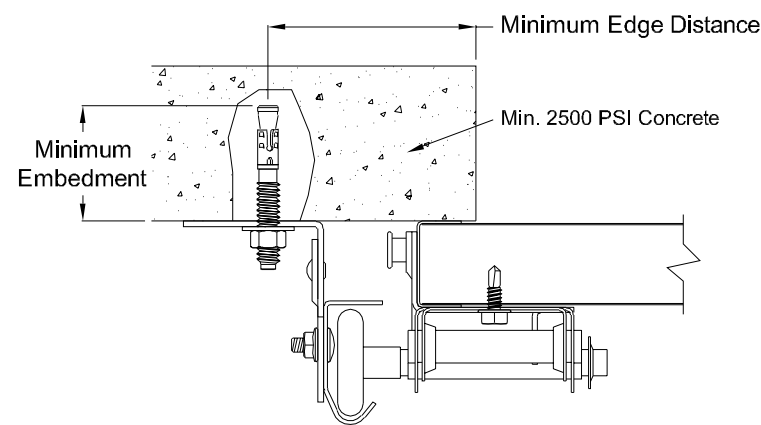
320 Sycamore  
 Wauseon, Ohio 43567  
 © Copyright 2014



### Direct Wood Mounting Detail

Bracket Mount Shown, Reverse and Continuous Angle Mount Also Approved As Alternate.

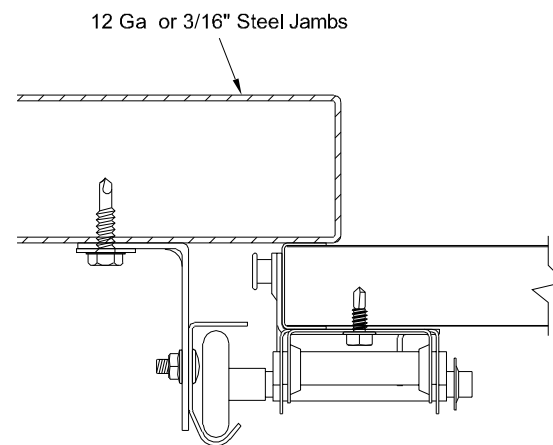
439 lbs. per anchor allowable load  
 5/16" Dia. Lag Screw w/1-1/8" O.D. Flat Washer (shall conform to ANSI/ASME standard B18.2.1)  
 Minimum Screw Length: Spruce-Pine-Fur (SPF) - 2-1/2"  
 Southern Pine - 1-5/8"  
 Minimum Edge Distance: 1/2"  
 Maximum on Center Spacing: 24"



### Direct Concrete Mounting Detail

Continuous Angle Clip Mount Shown, Bracket and Reverse Continuous Angle Mount Also Approved As Alternate.

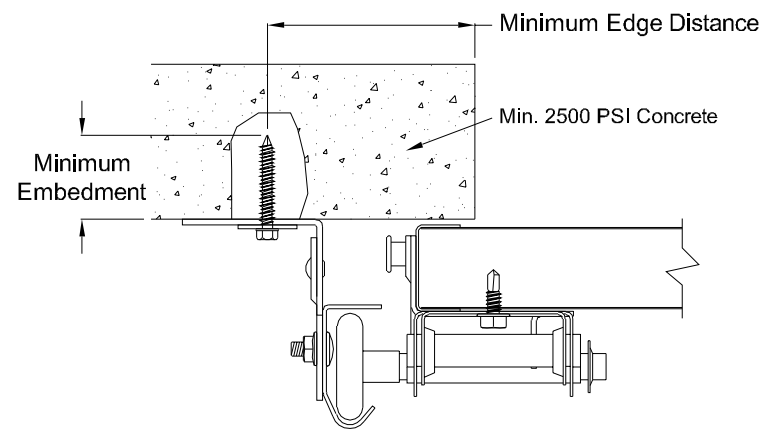
831 lbs. per anchor allowable load  
 3/8" Dia. Ankr-Tite CCAT w/1-1/8" O.D. Flat Washer (by Wej-It Fastening Systems)  
 Minimum Embedment: 2-5/8"  
 Minimum Edge Distance: 2-1/2"  
 Minimum on Center Spacing: 6"  
 Maximum on Center Spacing: 24"



### Direct Steel Mounting Detail

Bracket Mount Shown, Reverse and Continuous Angle Mount Also Approved As Alternate.

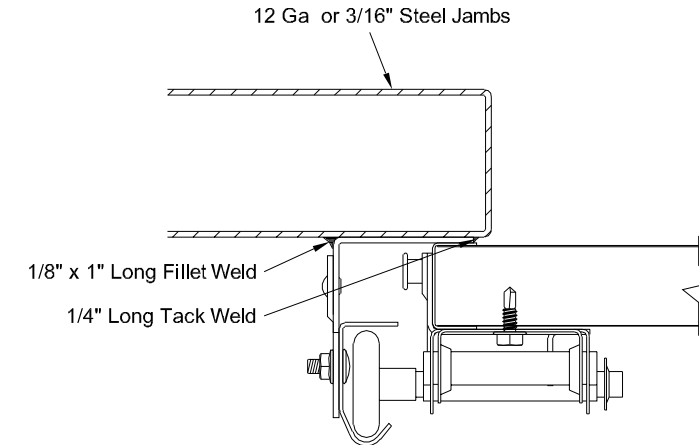
232 lbs. per anchor allowable load - 12 Ga Steel  
 569 lbs. per anchor allowable load - 3/16" Ga Steel  
 5/16"-12 Tek Self-Drilling Screw w/9/16" O.D. Flat Washer  
 12 Ga Maximum on Center Spacing: 15"  
 3/16" Maximum on Center Spacing: 24"



### Direct Concrete Mounting Detail

Continuous Angle Clip Mount Shown, Bracket and Reverse Continuous Angle Mount Also Approved As Alternate.

562 lbs. per anchor allowable load  
 1/4" Dia. Concrete Self-Tapping & Wedge Anchor w/1" O.D. Flat Washer (Includes Tapcon+ (by ITW), Wedge-Bolt+ (by Powers Fasteners) & Red Head TruBolt wedge anchor (by ITW))  
 Minimum Embedment: 2"  
 Minimum Edge Distance: 2-1/2"  
 Minimum on Center Spacing: 5"  
 Maximum on Center Spacing: 24"



### Direct Steel Mounting Detail

Reverse Continuous Angle Clip Mount Shown, Continuous Angle Mount Also Approved As Alternate.

1272 lbs. per anchor allowable load  
 1/8" Nom. x 1" Long Fillet and 1/4" Long Tack Weld (E60xx Electrodes Min.)  
 Welds performed by a certified welder or inspected by a certified welding inspector to verify integrity of the welds.  
 Maximum on Center Spacing: Apply welds at each roller location not to exceed 24"

**IMPACT RESISTANT**

John E. Scates, P.E.  
 2560 King Arthur Blvd. Ste 124-54  
 Lewisville, Texas 75056  
 Texas P.E. 56308/F2203

Professional Engineer seal provided only for verification of wind load construction details.



**DESCRIPTION:**  
 9' 2" HT 600, 700, 2000, 800 & 900/9000 AMERICAN TRADITION SERIES WIND LOAD SECTIONAL DOOR  
 DESIGN PRESSURE +41.1/-46.4 PSF

**DRAWING NO.:** WLTI-0600-0110-08-41-46 **REV.:** A

**DRAWN BY:** MVS **DATE DRAWN:** 10/25/18 **REV. DATE:** 2/23/22

**MODEL(S):** See Sheet 3 **SHEET: 4 OF 4**

320 Sycamore  
 Wauseon, Ohio 43567  
 © Copyright 2014