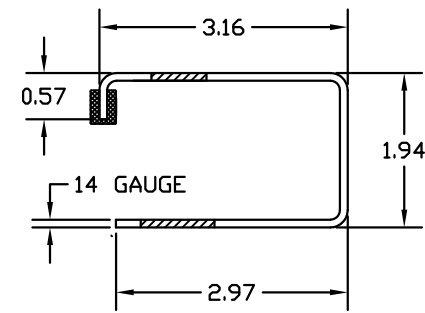


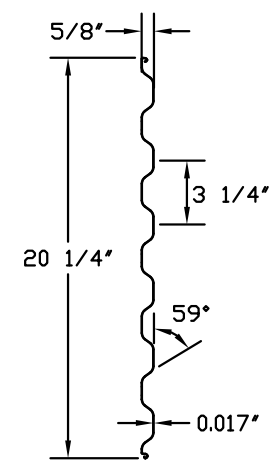
REVISIONS			
REV	RELEASE PER DRN	DATE	APPROVAL

MINIMUM HEADROOM DIMENSIONS

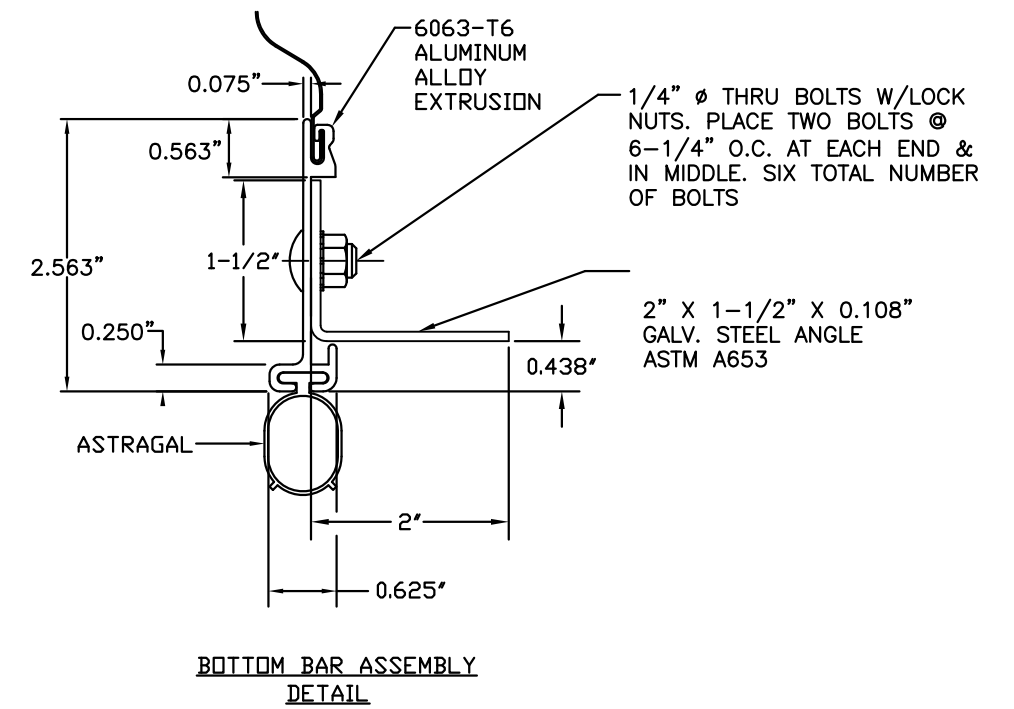
OPENING HEIGHT	THRU 8'-0"	OVER 8'-0" THRU 10'-0"	OVER 10'-0" THRU 14'-0"	OVER 14'-0" THRU 16'-0"	OVER 16'-0" THRU 18'-0"	OVER 18'-0" THRU 20'-0"
VERTICAL HEADROOM	18"	20"	21"	22"	23"	24"
HORIZONTAL HEADROOM	19"	21"	22"	23"	24"	25"



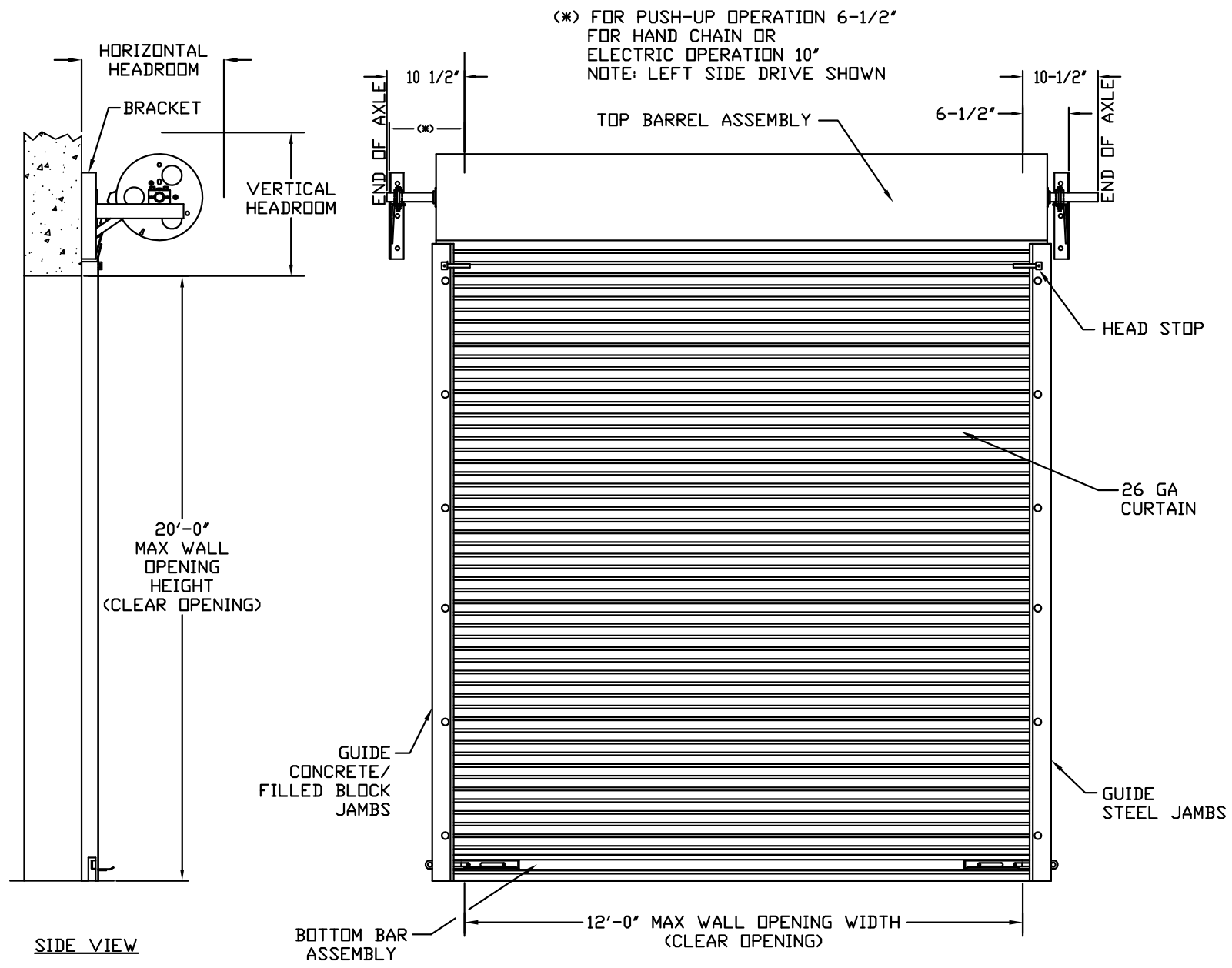
ASTM A653 G40 GALVANIZED CS TYPE B  
GUIDE DETAIL



ASTM A653 SS GRADE 80 WITH FULL COAT OF PRIMER AND BAKED POLYESTER FINISH COAT  
TYPICAL PANEL (26 GA.) DETAIL

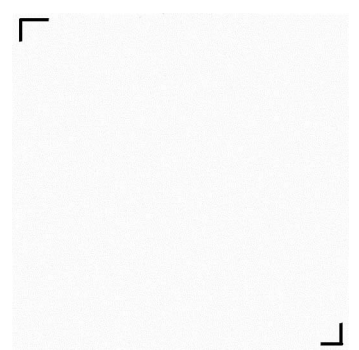


BOTTOM BAR ASSEMBLY DETAIL



(\* ) FOR PUSH-UP OPERATION 6-1/2" FOR HAND CHAIN OR ELECTRIC OPERATION 10" NOTE: LEFT SIDE DRIVE SHOWN

INSIDE ELEVATION



JOHN E. SCATES PE  
3121 FAIRGATE  
CARROLTON, TX 75007  
  
FL PE 51737  
TX PE 56308/F-2203

THESE CONFIDENTIAL DOCUMENTS SUBMITTED BY DBCI CONTAIN INFORMATION OF A PROPRIETARY NATURE AND MAY NOT BE REPRODUCED OR USED TO MANUFACTURE ANYTHING IN PART OR IN WHOLE FOR ANY PURPOSE OTHER THAN THAT WHICH IS NECESSARY FOR PREPARATION OF BIDS OR ENGINEERING WITHOUT THE EXPRESS PERMISSION OF DBCI WHICH MAY RECALL DOCUMENTS AT ANY TIME.

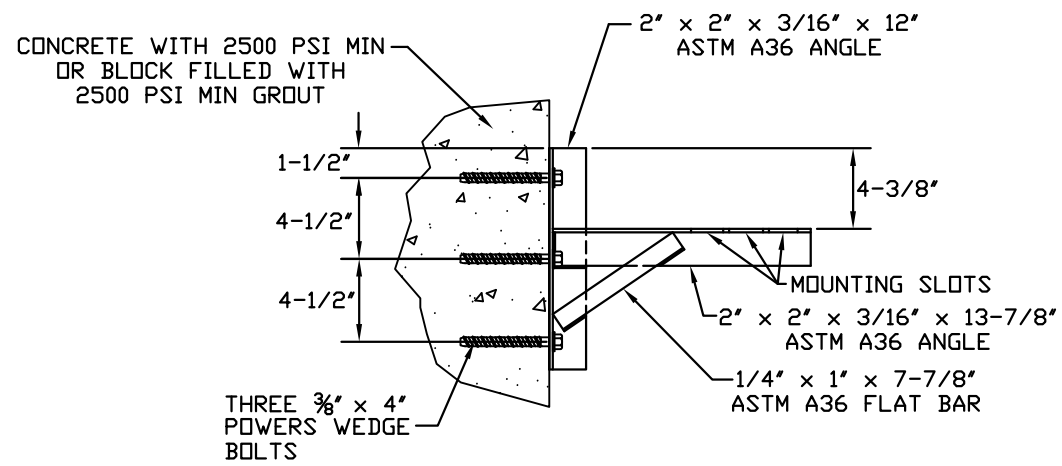
PART NUMBER: N/A	
MATERIAL: N/A	
APPLIED FINISH: N/A	
UNIT OF MEASURE: N/A	
APPROVALS	DATE:
DRAWN BRAY ALLEN	8/6/14
CHECKED BRAY ALLEN	11/14/08
APPROVED	



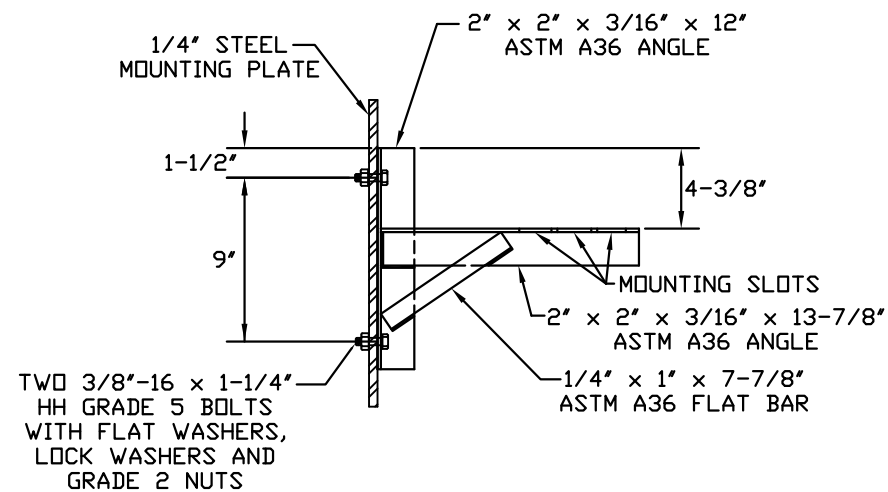
26 GA. WIND LOAD, MAX. SIZE 12'-0" x 20'-0"  
CURL-LOK K2400/K2500 SERIES

SIZE B	DRAWING NUMBER -K2500-14-0001	REV.
SCALE: NONE	SHEET 1	OF 2

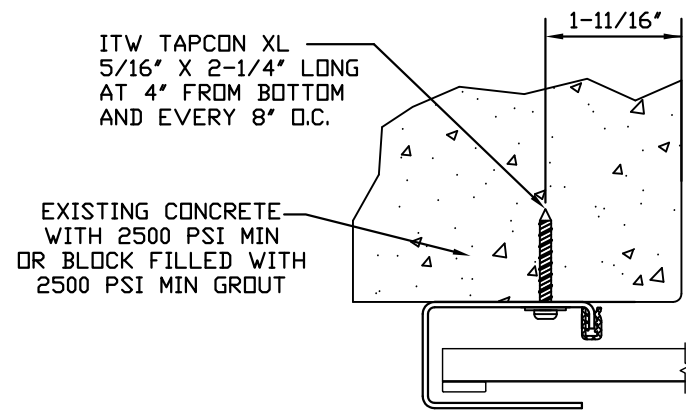
REVISIONS				
REV	RELEASE PER	DRN	DATE	APPROVAL



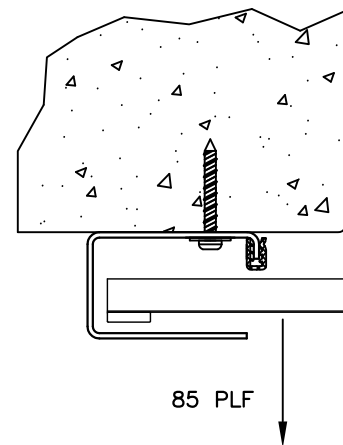
DOOR MOUNTING BRACKET TO MASONRY DETAIL



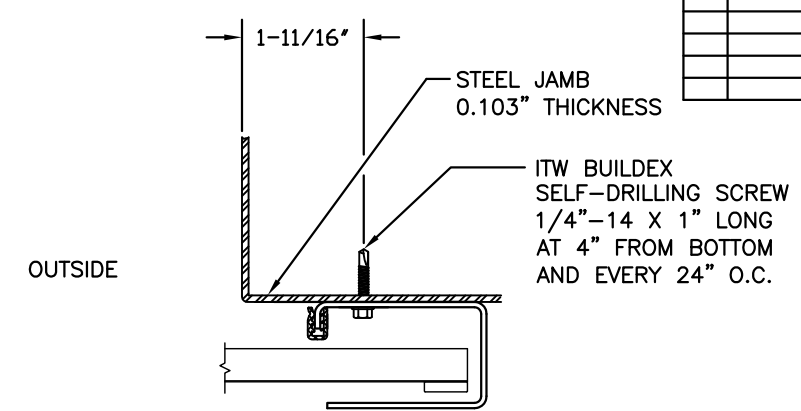
DOOR MOUNTING BRACKET TO STEEL DETAIL



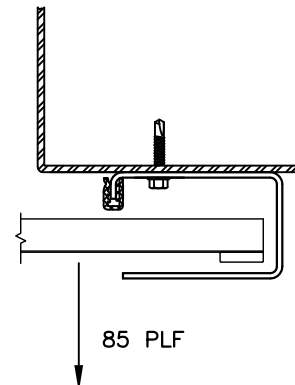
FOR MASONRY JAMBS:  
CURTAIN WIDTH=OPENING WIDTH+6"  
CONCRETE/FILLED BLOCK JAMBS  
LH GUIDE MOUNT SHOWN



CONCRETE/FILLED BLOCK JAMBS  
LH GUIDE MOUNT SHOWN



FOR STEEL JAMBS:  
CURTAIN WIDTH=OPENING WIDTH+4.5"  
STEEL JAMBS  
RH GUIDE MOUNT SHOWN



STEEL JAMBS  
RH GUIDE MOUNT SHOWN

SUPERIMPOSED LOAD DIAGRAM

DOOR SCHEDULE	
DOOR WIDTH	DESIGN PRESSURE (PSF)
≤ 3'-0"	+ 39.6
	- 46.2
4'-0"	+ 31.1
	- 36.3
5'-0"	+ 25.6
	- 29.9
6'-0"	+ 21.7
	- 25.4
7'-0"	+ 18.9
	- 22.1
8'-0"	+ 16.7
	- 19.5
9'-0"	+ 15.0
	- 17.5
10'-0"	+ 13.6
	- 15.9
11'-0"	+ 12.4
	- 14.5
12'-0"	+11.5
	-13.4

GENERAL NOTES:

1. THIS DOOR EVALUATED IN ACCORDANCE WITH TEST METHODS ASTM E330-02 AND ANSI/DASMA 108-05.
2. THIS PRODUCT EVALUATION IS GENERIC. IT DOES NOT INCLUDE INFORMATION PREPARED FOR A SPECIFIC SITE.
3. IT IS THE CONTRACTOR'S RESPONSIBILITY TO VERIFY THE STRUCTURAL CAPACITY OF THE SUBSTRATE (JAMB) TO RESIST THE LOADS IMPOSED BY THE ROLL-UP DOOR.
4. ALL DOOR JAMBS (MASONRY OR STEEL) MUST BE DESIGNED TO RESIST THE FORCES SHOWN IN SUPERIMPOSED LOAD DIAGRAM.
5. THE DOOR ASSEMBLY SHALL BE INSTALLED IN ACCORDANCE WITH THE MANUFACTURER'S INSTALLATION INSTRUCTIONS.

<p>JOHN E. SCATES PE 3121 FAIRGATE CARROLLTON, TX 75007</p> <p>FL PE 51737 TX PE 56308/F-2203</p>	<p>THESE CONFIDENTIAL DOCUMENTS SUBMITTED BY DBCI CONTAIN INFORMATION OF A PROPRIETARY NATURE AND MAY NOT BE REPRODUCED OR USED TO MANUFACTURE ANYTHING IN PART OR IN WHOLE FOR ANY PURPOSE OTHER THAN THAT WHICH IS NECESSARY FOR PREPARATION OF BIDS OR ENGINEERING WITHOUT THE EXPRESS PERMISSION OF DBCI WHICH MAY RECALL DOCUMENTS AT ANY TIME.</p>	<p>PART NUMBER: N/A</p>	<p><b>DBCI</b> DOORS &amp; BUILDING COMPONENTS DOUGLASVILLE, GA CHANDLER, AZ HOUSTON, TX © 2000 DBCI ALL RIGHTS RESERVED</p>	
		<p>MATERIAL: N/A</p>		<p>APPLIED FINISH: N/A</p>
<p>APPROVALS</p> <p>DRAWN: BRAY ALLEN 8/6/14</p> <p>CHECKED: BRAY ALLEN 8/6/14</p> <p>APPROVED:</p>	<p>UNIT OF MEASURE: N/A</p>	<p>26 GA. WIND LOAD, MAX. SIZE 12'-0" x 20'-0"</p>	<p>CURL-LOK K2400/K2500 SERIES</p>	
		<p>DATE:</p>		<p>SCALE: NONE</p>
		<p>SIZE: B</p>	<p>DRAWING NUMBER: -K2500-14-0001</p>	<p>REV.:</p>