

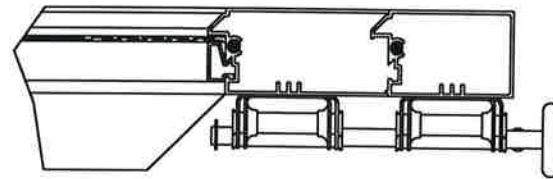
CLOPAY MODEL 902, 903  
IDEAL MODEL C2AL, C3AL

REVISIONS					
REV. NO.	ZONE:	DATE:	ECN NO.	APPVD:	DESCRIPTION
01	-	2/6/17	-	-	INITIAL RELEASE
02	-	02/2022	-	JDW	REVISED FOR TDI.

THIS PRODUCT COMPLIES WITH THE 2018 IBC/IRC.

DOOR IS MADE OF 6063-T5 ALUMINUM EXTRUSIONS. WALL THICKNESS:

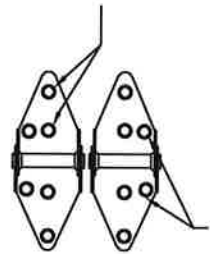
TOP RAIL	.075
INTER. TOP & BOTTOM RAILS	.075
TOP HAS .1 x 1.875" FIN	
INTER. TOP RAIL CAP	.040
SINGLE & DOUBLE END STILES	.075
CENTER STILES	.062
HD BTM RAIL	.179



REINFORCING FIN ON INTER. TOP RAILS ANGLE CUT AT END STILES

SECTION 4 - 4

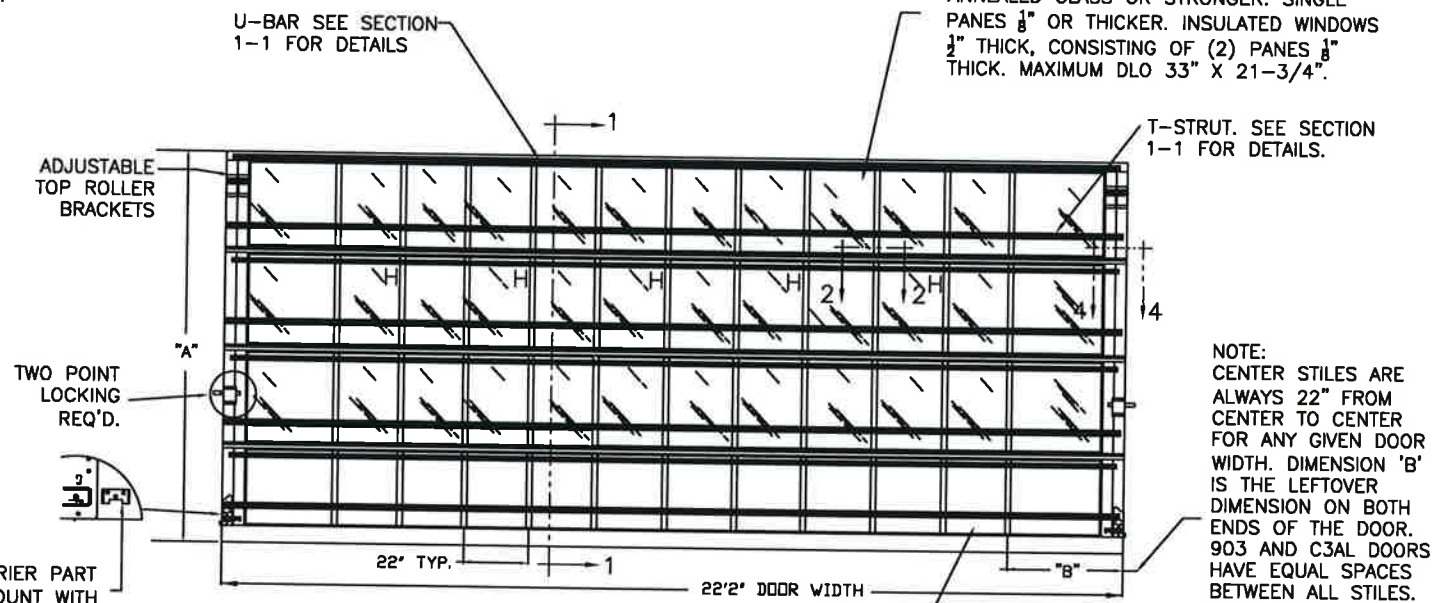
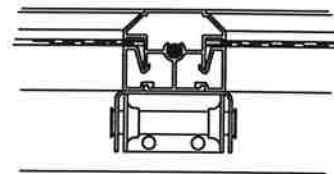
#14x5/8" SHEET METAL SCREWS



14 GA. END HINGES

1/4"x3/4" SELF TAPPING SCREWS.

CENTER HINGE OF 16 GA. GALV. STEEL, ATTACHED TO INTER. BOTTOM RAIL WITH (2) #14 X 5/8" SHT MTL SCREWS AND TO INTER. TOP RAIL WITH (2) 1/4 - 20 X 1/2" HEX HEAD MACHINE SCREWS & NUTS



ALUMINUM FULL VISION WINDOW LITES, SINGLE PANE OR INSULATED. ALL PANES ANNEALED GLASS OR STRONGER. SINGLE PANES 1/2" OR THICKER. INSULATED WINDOWS 1/2" THICK, CONSISTING OF (2) PANES 1/4" THICK. MAXIMUM DLO 33" X 21-3/4".

NOTE: CENTER STILES ARE ALWAYS 22" FROM CENTER TO CENTER FOR ANY GIVEN DOOR WIDTH. DIMENSION 'B' IS THE LEFTOVER DIMENSION ON BOTH ENDS OF THE DOOR. 903 AND C3AL DOORS HAVE EQUAL SPACES BETWEEN ALL STILES.

3" ROLLER CARRIER PART # 0120394. MOUNT WITH QTY 3 SELF DRILLING SCREWS AS SHOWN

NOTE: STILES MARKED WITH H ARE HINGE LOCATIONS.

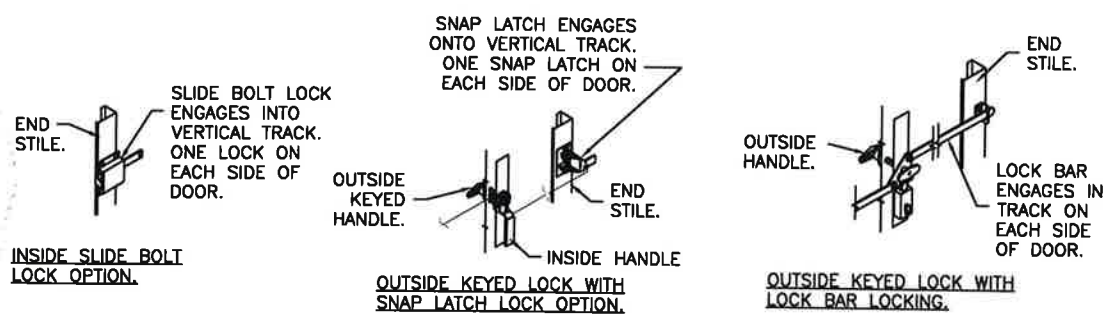
PANEL IN BOTTOM SECTION CAN BE .050" THICK SMOOTH ALUMINUM.

DOOR WIDTH	NUMBER OF CENTER STILES	NUMBER OF HINGES
20'-3" THRU 22'-2"	11	5

DOOR HEIGHT 'A'	NUMBER OF SECTIONS
UP TO 8'-0"	4
8'-3" THRU 10'-0"	5
10'-3" THRU 12'-0"	6
12'-3" THRU 14'-0"	7
14'-3" THRU 16'-0"	8
16'-3" THRU 18'-0"	9

MAX. SECTION HEIGHT: 24"

DESIGN ENGINEER: MARK WESTERFIELD, P.E.  
FLORIDA P.E. #48495, NC P.E. #23832, TEXAS P.E. #91513



DESIGN LOADS: +30 & -30 P.S.F.  
TEST LOADS +45 & -45 P.S.F.

Unless Stated Otherwise TOLERANCES are  
.0 = ±.031  
.00 = ±.015  
.000 = ±.005  
.0000 = ±.001  
Degrees = ±1/2'

**Clopay CORPORATION**  
8585 Duke Boulevard  
Mason, OH 45040 USA  
Tel. No. 513-770-4800  
Fax No. 513-770-4853

MANUFACTURING PRODUCT CODE:  
MPC: C-AL-1F499

PART NO.: N/A

CLOPAY WINDLOAD RATING  
**W5**

DESCRIPTION: M/N 902, C2AL, 22'2" WIDE DES. +30/-30 PSF

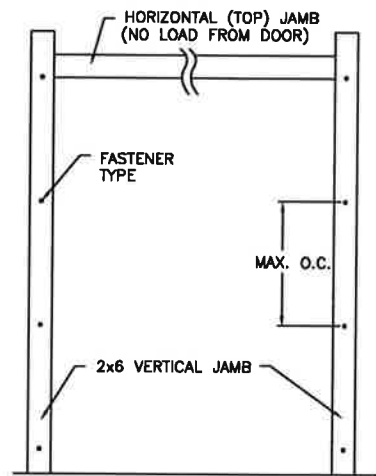
DRAWN BY: RJH DATE: 2/6/17 SCALE: NTS DWG. SIZE **B**

CHECKED BY: - DATE: - SHEET 1 OF 3

DWG. NO.: 105059 VER: TDI

CLOPAY MODEL 902, 903  
IDEAL MODEL C2AL, C3AL

REVISIONS					
REV. NO.	ZONE:	DATE:	ECN NO.	APPVD:	DESCRIPTION
02	-	-	-	-	SEE REVISION HISTORY ON SHEET 1



**JAMB TO SUPPORTING STRUCTURE ATTACHMENT**

- NOTES:**
1. ALL THE LOAD FROM THE DOOR IS TRANSFERRED TO THE TRACK AND THEN FROM THE TRACK TO THE 2x6 VERTICAL SYP (GRADE #2 OR BETTER) JAMBS. NO LOAD FROM THE DOOR IS TRANSFERRED TO THE HORIZONTAL (TOP) JAMB.
  2. EACH VERTICAL JAMB SEES A MAXIMUM DESIGN LOAD OF +330 LB & -330 LB. PER LINEAR FOOT OF JAMB.
  3. ALL JAMB FASTENERS MAY BE (BUT ARE NOT REQUIRED TO BE) COUNTERSUNK TO PROVIDE A FLUSH MOUNTING SURFACE.
  4. A 1/3 STRESS INCREASE FOR WIND LOAD WAS NOT USED IN THE CALCULATION OF ALLOWABLE LOADS FOR ANCHORS AND FASTENERS FOR STEEL, CONCRETE AND MASONRY.

**NOTE:** 2x6 WOOD JAMBS ARE NOT REQUIRED WITH CONTINUOUS ANGLE MOUNT TRACK. HOWEVER, IF DESIRED ON STEEL JAMBS OR CONCRETE OR BLOCK WALLS, APPROVED FASTENERS AS DETAILED BELOW SHOULD BE INCREASED IN LENGTH BY 1-1/2" AND INSTALLED DIRECTLY THROUGH THE ANGLE AND 2x6 WOOD JAMBS INTO THE STEEL JAMBS OR CONCRETE OR BLOCK WALLS. ANCHORS CAN BE (BUT ARE NOT REQUIRED TO BE) COUNTERSUNK TO PROVIDE A FLUSH MOUNTING SURFACE. CONTINUOUS ANGLE TRACK CAN BE ANCHORED DIRECTLY TO GROUT REINFORCED BLOCK WALL OR 3,000 PSI MIN. CONCRETE COLUMN OR STEEL JAMBS.

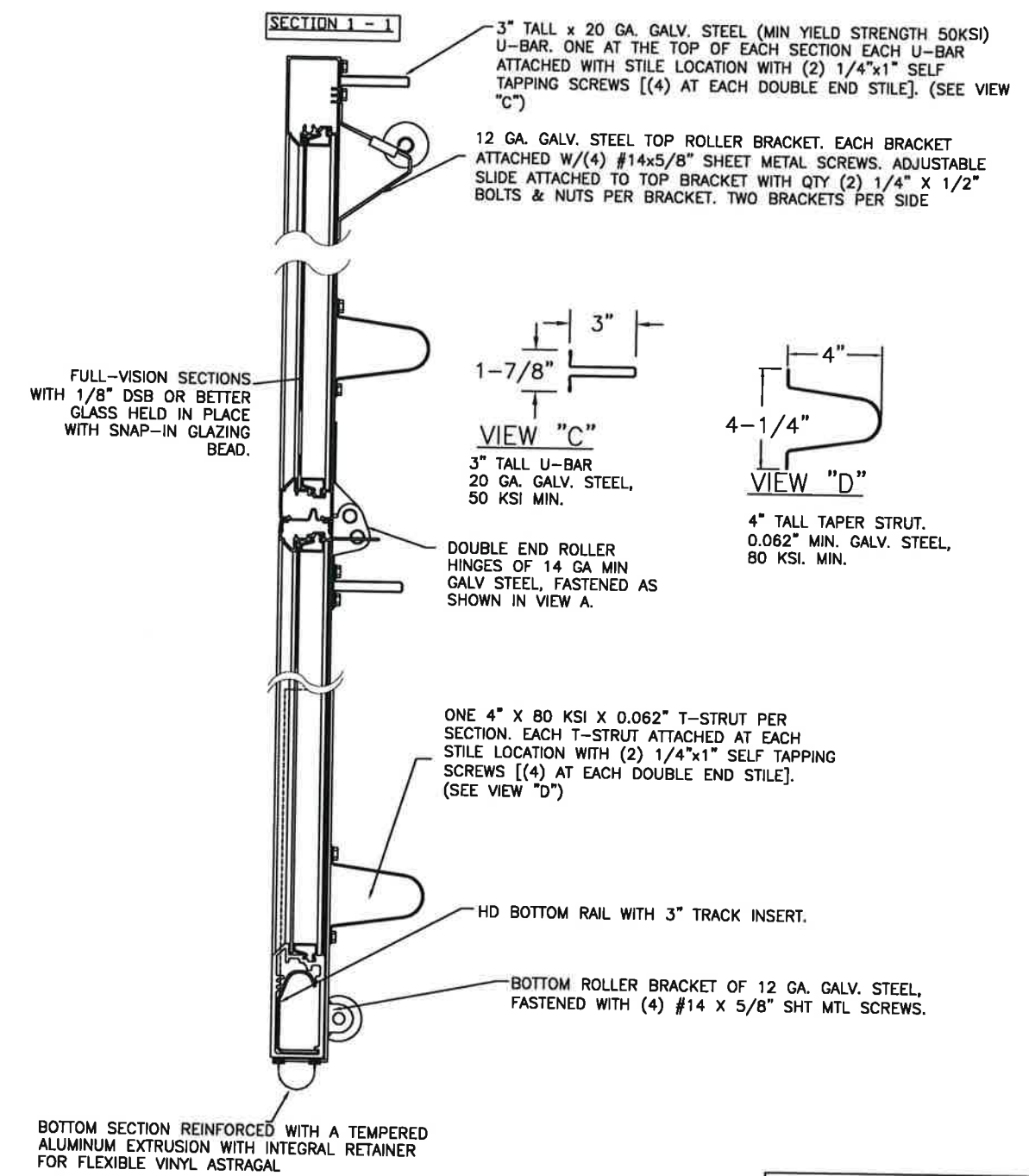
**FASTENER ATTACHMENT TO SUPPORTING STRUCTURE SCHEDULES**

BUILDING TYPE	FASTENER TYPE	MAXIMUM ON-CENTER DISTANCE BETWEEN FASTENERS*	STEEL WASHERS REQUIRED?
HOLLOW BLOCK WALL	1/4" x 1-1/4" MIN. EMBED ULTRACON CONCRETE ANCHOR	5"	1" O.D.
GROUT FILLED BLOCK WALL	1/4" x 1-3/4" MIN. EMBED ULTRACON CONCRETE ANCHOR	8-1/4"	1" O.D.
2000 PSI MIN. CONCRETE	1/4" x 1" MIN. EMBED ULTRACON CONCRETE ANCHOR	7-1/4"	1" O.D.
2000 PSI MIN. CONCRETE	1/4" x 1" MIN. EMBED TAPCON CONCRETE ANCHOR	6-3/4"	1" O.D.
2000 PSI MIN. CONCRETE	3/8" x 1-3/4" MIN. EMBED WEJ-IT ANKR TITE SLEEVE ANCHOR	15"	INCLUDED
4000 PSI MIN. CONCRETE	3/8" x 1-3/4" MIN. EMBED WEJ-IT ANKR TITE SLEEVE ANCHOR	24"	INCLUDED
WOOD FRAME (SYP 0.55 SG)	1/2" x 3" LAG SCREW (ASTM A307, GRADE A) 1-5/8" EMBED INTO STRUCTURE	16-1/2"	1" O.D.
14GA STEEL (0.060" MIN.)	1/4"-14 x 1" ITW BUILDDEX TEKS SELF-DRILLING FASTENER	6-3/4"	1" O.D.
12GA STEEL (0.105" MIN.)	1/4"-14 x 1" ITW BUILDDEX TEKS SELF-DRILLING FASTENER	12"	1" O.D.
1/8" STEEL	1/4"-14 x 1" ITW BUILDDEX TEKS SELF-DRILLING FASTENER	14-1/2"	1" O.D.

\* FIRST (BOTTOM) ANCHOR STARTING AT NO MORE THAN HALF OF THE MAXIMUM ON-CENTER DISTANCE. HIGHEST ANCHOR INSTALLED AT LEAST AS HIGH AS THE DOOR OPENING.  
CLOPAY DOES NOT SUPPLY JAMB ATTACHMENT FASTENERS.  
MINIMUM DISTANCE BETWEEN CENTER OF ANCHOR AND EDGE OF CONCRETE BLOCK: 2-1/2", EXCLUDING STUCCO THICKNESS.

DESIGNED BY: [Signature]  
DATE: 5/31/22

DESIGN ENGINEER: MARK WESTERFIELD, P.E.  
FLORIDA P.E. #48495, NC P.E. #23832, TEXAS P.E. #91513



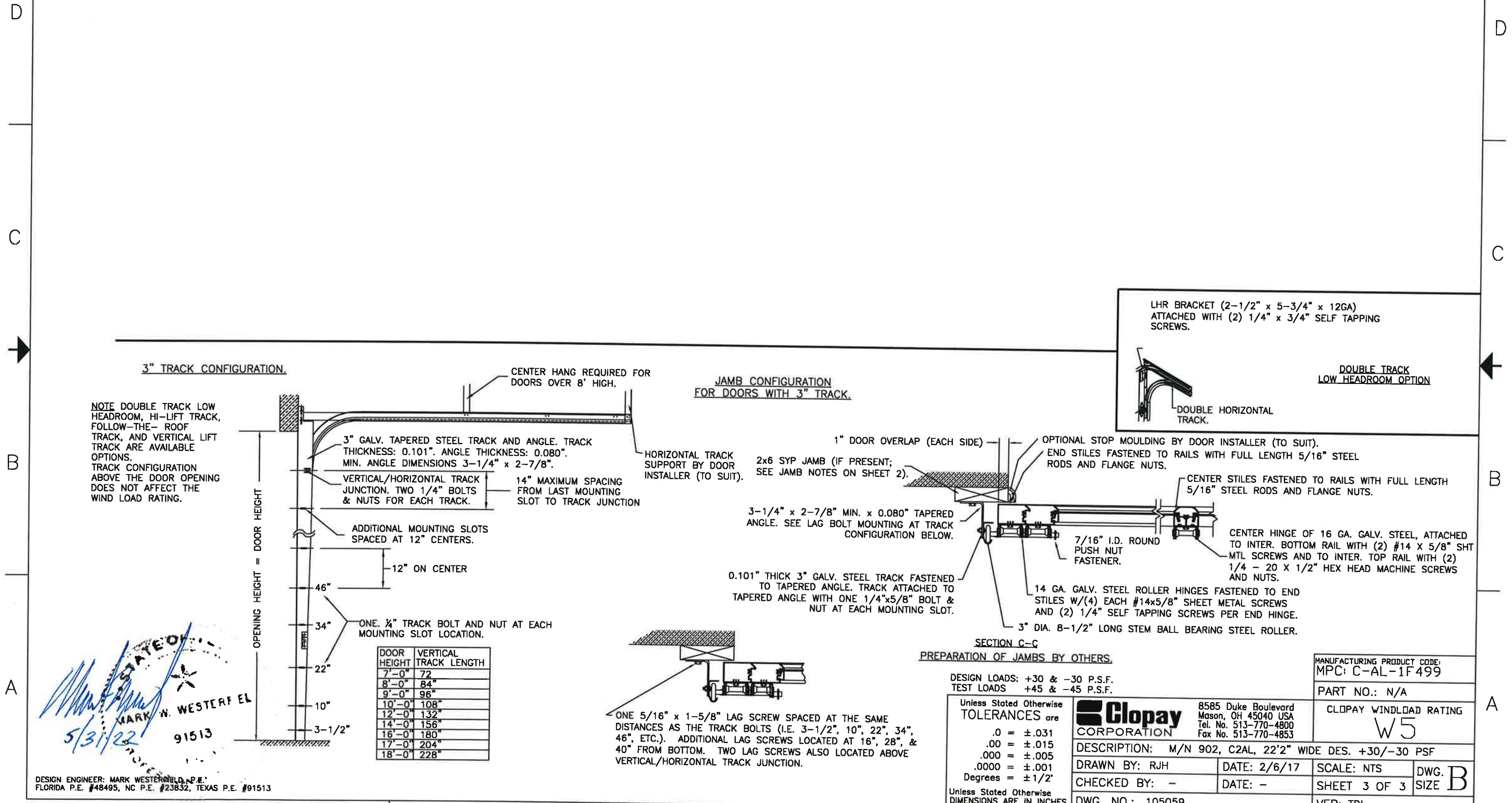
DESIGN LOADS: +30 & -30 P.S.F.  
TEST LOADS +45 & -45 P.S.F.

Unless Stated Otherwise  
TOLERANCES are  
.0 = ±.031  
.00 = ±.015  
.000 = ±.005  
.0000 = ±.001  
Degrees = ±1/2°  
Unless Stated Otherwise  
DIMENSIONS ARE IN INCHES.

	8585 Duke Boulevard Mason, OH 45040 USA Tel. No. 513-770-4800 Fax No. 513-770-4853		MANUFACTURING PRODUCT CODE: MPC: C-AL-1F499	
	DESCRIPTION: M/N 902, C2AL, 22'2" WIDE DES. +30/-30 PSF		PART NO.: N/A	
DRAWN BY: RJH	DATE: 2/6/17	SCALE: NTS	CLOPAY WINDLOAD RATING W5	
CHECKED BY: -	DATE: -	SHEET 2 OF 3	DWG. SIZE B	
DWG. NO.: 105059		VER: TDI		

CLOPAY MODEL 902, 903  
IDEAL MODEL C2AL, C3AL

REVISIONS					
REV. NO.	ZONE:	DATE:	ECN NO.	APPVD:	DESCRIPTION
02	-	-	-	-	SEE REVISION HISTORY ON SHEET 1



MARK H. WESTERFEL  
91513  
5/31/22

DESIGN ENGINEER: MARK WESTERFEL, P.E.  
FLORIDA P.E. #48495, NC P.E. #23832, TEXAS P.E. #91513

		8585 Duke Boulevard Mason, OH 45040 USA Tel. No. 513-770-4800 Fax No. 513-770-4853	
DESCRIPTION: M/N 902, C2AL, 22'2" WIDE DES. +30/-30 PSF		CLOPAY WINDLOAD RATING W5	
DRAWN BY: RJH	DATE: 2/6/17	SCALE: NTS	DWG. SIZE B
CHECKED BY: -	DATE: -	SHEET 3 OF 3	VER: TDI
DWG. NO.: 105059			