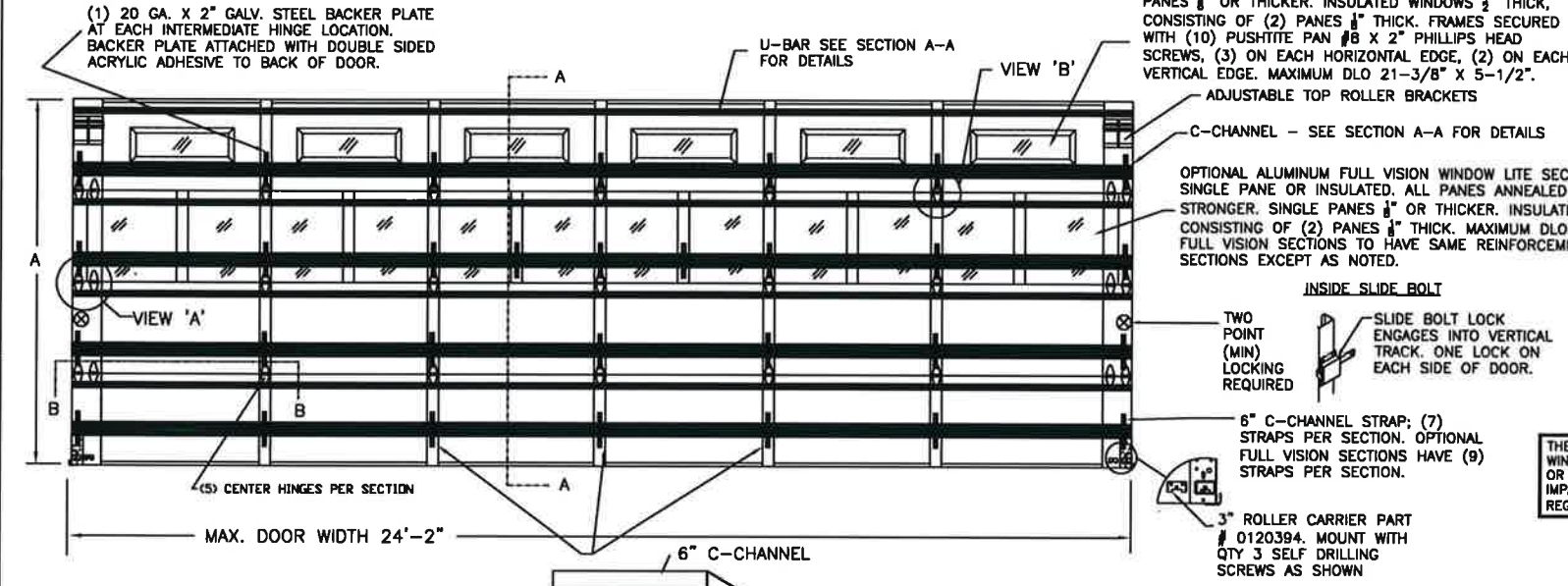


CLOPAY MODEL 3200: 24 GA. EXTERIOR STEEL SKIN
 CLOPAY MODEL 3220: 20 GA. EXTERIOR STEEL SKIN
 HOLMES MODEL 240/240G: 24 GA. EXTERIOR STEEL SKIN

UP TO 24'2"W x 18'0"H MAXIMUM

REVISIONS						
REV. NO.	ZONE	DATE	ECN NO.	APPVD.	DESCRIPTION	
04	-	08/2012	-	-	REVISED FOR TDI.	
05	-	06/2013	-	-	REMOVED ACRYLIC/WIRE GLASS. ADDED GLAZING SIZE FOR FV.	
06	-	08/2016	-	-	REMOVED WIND SPEED TABLE.	
07	-	02/2022	-	-	REVISED FOR TDI.	

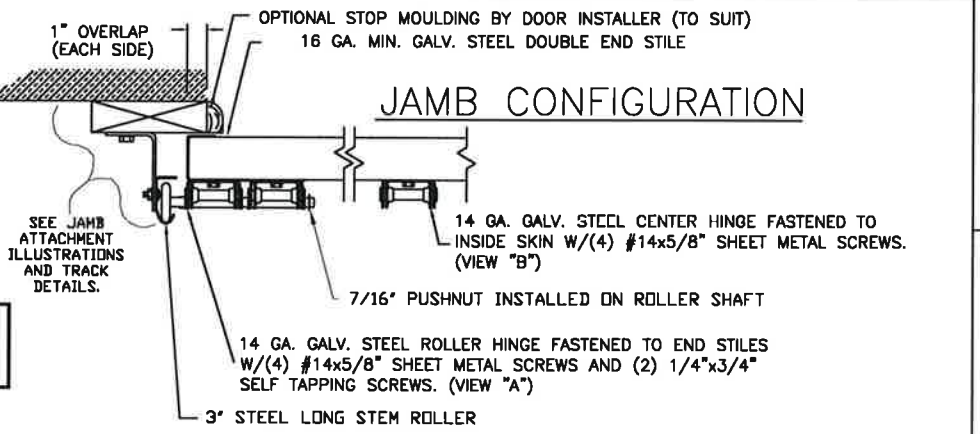


OPTIONAL SINGLE PANE OR INSULATED WINDOW LITES. ALL PANES ANNEALED GLASS OR STRONGER. SINGLE PANES 1/2" OR THICKER. INSULATED WINDOWS 1/2" THICK, CONSISTING OF (2) PANES 1/2" THICK. FRAMES SECURED WITH (10) PUSHITITE PAN #8 X 2" PHILLIPS HEAD SCREWS, (3) ON EACH HORIZONTAL EDGE, (2) ON EACH VERTICAL EDGE. MAXIMUM DLO 21-3/8" X 5-1/2".

OPTIONAL ALUMINUM FULL VISION WINDOW LITE SECTIONS AVAILABLE, SINGLE PANE OR INSULATED. ALL PANES ANNEALED GLASS OR STRONGER. SINGLE PANES 1/2" OR THICKER. INSULATED WINDOWS 1/2" THICK, CONSISTING OF (2) PANES 1/2" THICK. MAXIMUM DLO: 33" X 21-3/4". FULL VISION SECTIONS TO HAVE SAME REINFORCEMENT AS OTHER SECTIONS EXCEPT AS NOTED.

THIS PRODUCT COMPLIES WITH THE 2018 IBC/IRC.

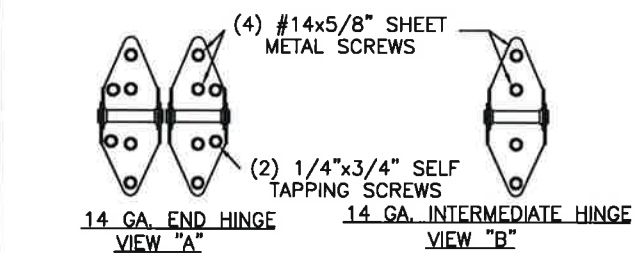
THE OPTIONAL GLAZING SHOWN ON THIS DRAWING MEETS THE WIND LOAD REQUIREMENTS OF THE FLORIDA BUILDING CODE OR INTERNATIONAL BUILDING CODE BUT DOES NOT MEET THE IMPACT RESISTANT REQUIREMENT FOR WINDBORNE DEBRIS REGIONS (FBC / IBC CHAPTER 16).



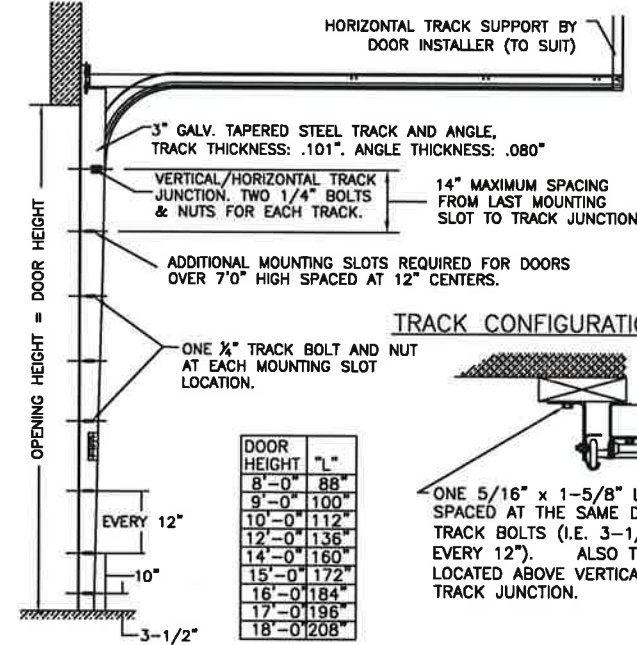
DOOR HEIGHT 'A'	NUMBER OF SECTIONS
UP TO 8'-0"	4
8'-3" THRU 10'-0"	5
10'-3" THRU 12'-0"	6
12'-3" THRU 14'-0"	7
14'-3" THRU 16'-0"	8
16'-3" THRU 18'-0"	9

MAX. SECTION HEIGHT: 24"

ATTACH THE 6" x 2-1/4" x 12 GA. STEEL REINFORCING PLATE TO THE UNDERSIDE OF THE C-CHANNEL WITH (4) 1/4"x3/4" SELF TAPPING SCREWS AT THESE LOCATIONS.

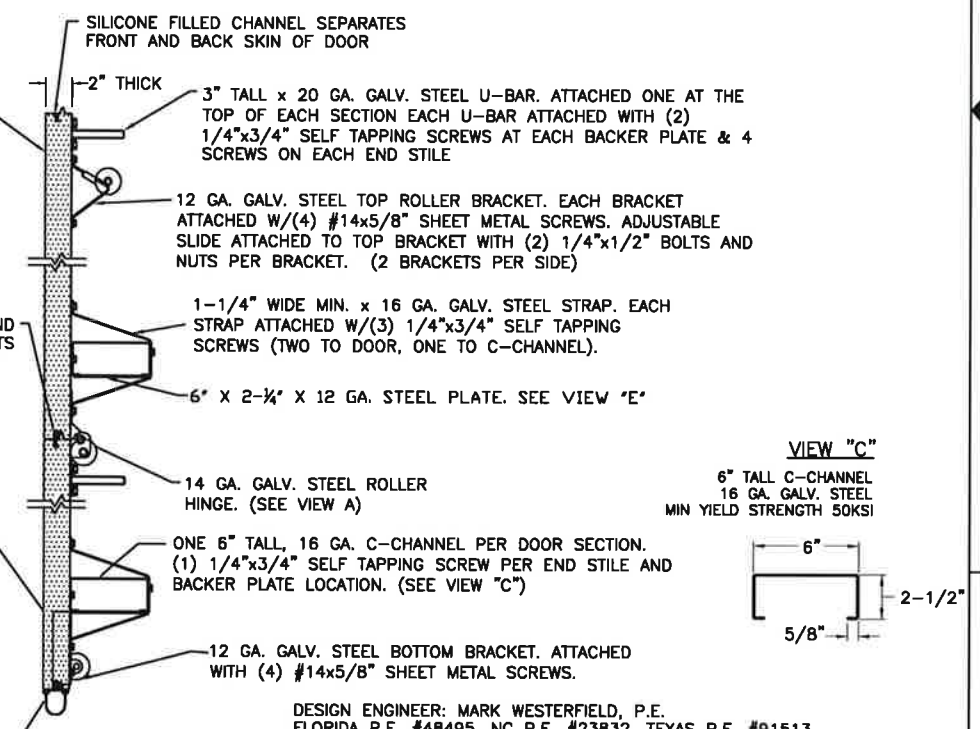


NOTE: TRACK CONFIGURATION ABOVE THE DOOR OPENING DOES NOT AFFECT THE WIND LOAD RATING OF THIS DOOR.

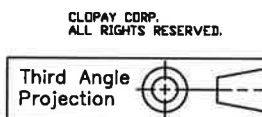
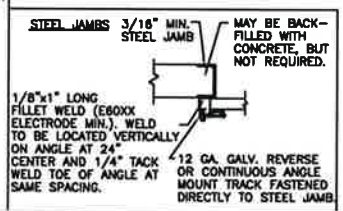
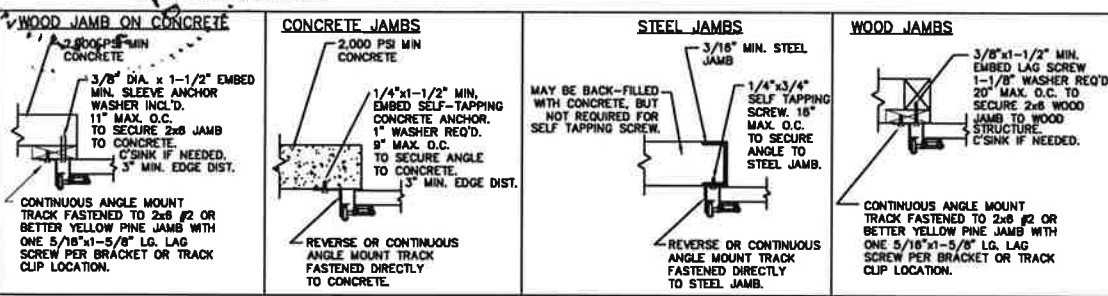


DOOR HEIGHT	"L"
8'-0"	88"
9'-0"	100"
10'-0"	112"
12'-0"	136"
14'-0"	160"
15'-0"	172"
16'-0"	184"
17'-0"	196"
18'-0"	208"

1.95" THICK, 1# DENSITY EXPANDED POLYSTYRENE FOAM INSULATION LAMINATED TO BOTH EXTERIOR AND INTERIOR SKINS.



NOTE: THE DESIGN OF THE SUPPORTING STRUCTURAL ELEMENTS ARE THE RESPONSIBILITY OF THE PROFESSIONAL OF RECORD FOR THE BUILDING OR STRUCTURE AND IN ACCORDANCE WITH CURRENT BUILDING CODES FOR THE LOADS LISTED ON THIS DRAWING.



Unless Stated Otherwise TOLERANCES are
 .0 = ±.031
 .00 = ±.015
 .000 = ±.005
 .0000 = ±.001
 Degrees = ±1/2"

DESIGN ENGINEER: MARK WESTERFIELD, P.E.
 FLORIDA P.E. #48495, NC P.E. #23832, TEXAS P.E. #91513
 DESIGN LOADS: +25.0, -25.0 PSF
 TEST LOADS: +37.5, -37.5 PSF

MANUFACTURING PRODUCT CODE: MPC: C-DSIE-1F447

8585 Duke Boulevard
 Mason, OH 45040 USA
 Tel. No. 513-770-4800
 Fax No. 513-770-4853

CLOPAY CORPORATION
 CLOPAY WINDLOAD RATING W4

DESCRIPTION: MODEL 240/3200/3220 WINDLOAD 24'-2"

DRAWN BY: BFA DATE: 11/08/04 SCALE: NONE DWG. NO.: 103334

CHECKED BY: - DATE: - SHEET 1 OF 1 SIZE B

VER: TDI

MARK WESTERFIELD
 6/18/22
 91513