

NOTE: DOUBLE TRACK LOW HEADROOM, HI-LIFT TRACK, FOLLOW-THE-ROOF TRACK, AND VERTICAL LIFT TRACK ARE AVAILABLE OPTIONS. 3" TRACK ALSO AVAILABLE.

MAX 10'-2" WIDE X 18'-0" HIGH

MODELS AVAILABLE (CLOPAY/ HOLMES/ IDEAL)  
 MODELS 524, 520/ 224/ C4ST, COST  
 INSULATED MODELS 524S, 520S, 524V/ 224S/ C4SS, COSS, C4SV

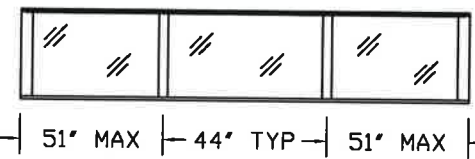
REVISIONS					
REV. NO.	ZONE:	DATE:	ECN NO.	APPVD:	DESCRIPTION
10	-	11/2008	-	-	ADDED MPC; UPDATED JAMB ATTACHMENT.
11	-	02/2012	-	-	UPDATED WINDCODE CHART.
12	-	08/2012	-	-	REVISED FOR TDI.
13	-	06/2013	-	-	REMOVED ACRYLIC/WIRE GLAZING. SPECIFIED GLAZING DIMENSIONS.
14	-	08/2016	-	-	REMOVED WIND SPEED TABLE.
15	-	02/2022	-	-	REVISED FOR TDI.

THIS PRODUCT COMPLIES WITH THE 2018 IBC/IRC.

SECTIONS ARE 1-7/8" THK PANELS ROLL FORMED OF .022" MIN. HOT DIPPED GALVANIZING, ROLL FORMED STEEL.

THE OPTIONAL GLAZING SHOWN ON THIS DRAWING MEETS THE WIND LOAD REQUIREMENTS OF THE FLORIDA BUILDING CODE OR INTERNATIONAL BUILDING CODE BUT DOES NOT MEET THE IMPACT RESISTANT REQUIREMENT FOR WINDBORNE DEBRIS REGIONS (REF. CHAPTER 16 FBC/IBC)

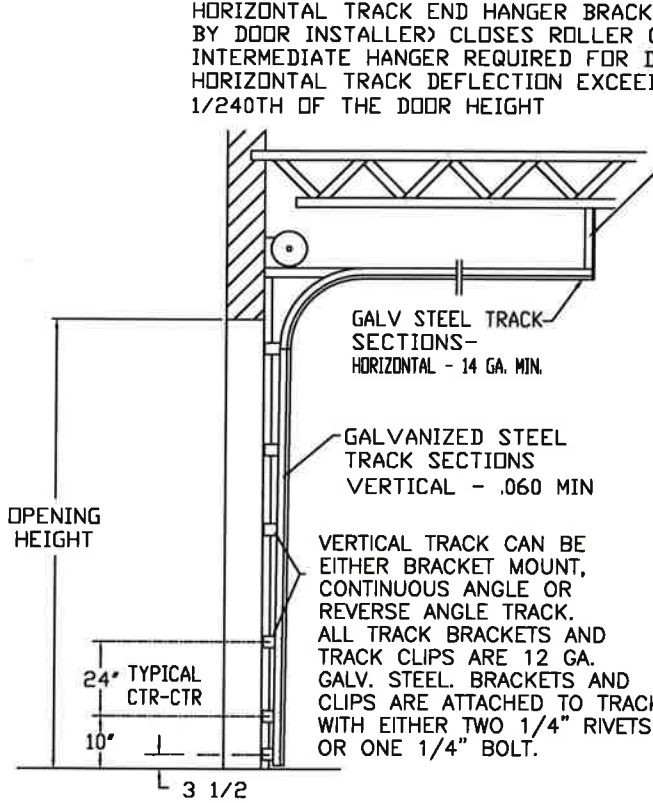
DOOR WIDTH	NUMBER OF CENTER STILES
UP TO 9'-2"	1
9'-3" THRU 10'-2"	2



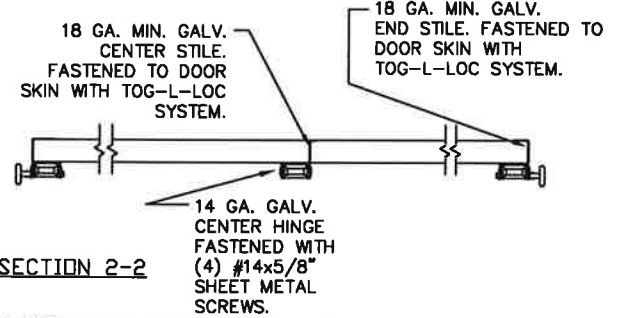
DOOR HEIGHT 'A'	NUMBER OF SECTIONS
UP TO 8'-0"	4
8'-3" THRU 10'-0"	5
10'-3" THRU 12'-0"	6
12'-3" THRU 14'-0"	7
14'-3" THRU 16'-0"	8
16'-3" THRU 18'-0"	9

OPTIONAL ALUMINUM FULL VISION WINDOW LITE SECTIONS AVAILABLE, SINGLE PANE OR INSULATED. ALL PANES ANNEALED GLASS OR STRONGER. SINGLE PANES 1/8" OR THICKER. INSULATED WINDOWS 1/2" THICK, CONSISTING OF (2) PANES 1/8" THICK. FULL VISION SECTIONS TO HAVE 2" X 2" X 1/8" L-ANGLE HORIZONTAL REINFORCEMENT, ATTACHED TO THE REINFORCING RIB WITH (2) 1/4"-20 X 5/8" HEX HEAD BOLTS AND NUTS AT EVERY HINGE LOCATION. MAXIMUM DLO: 51" X 21-3/4".

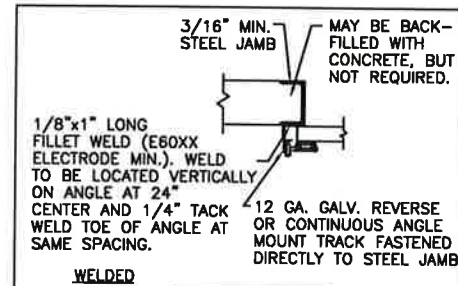
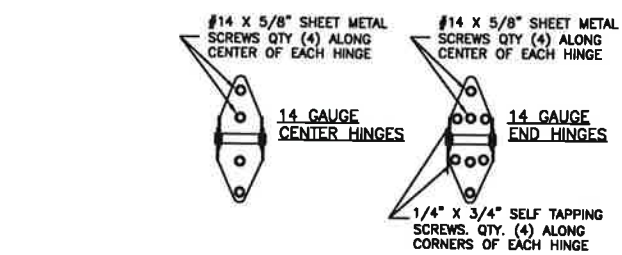
MAX. SECTION HEIGHT: 24"



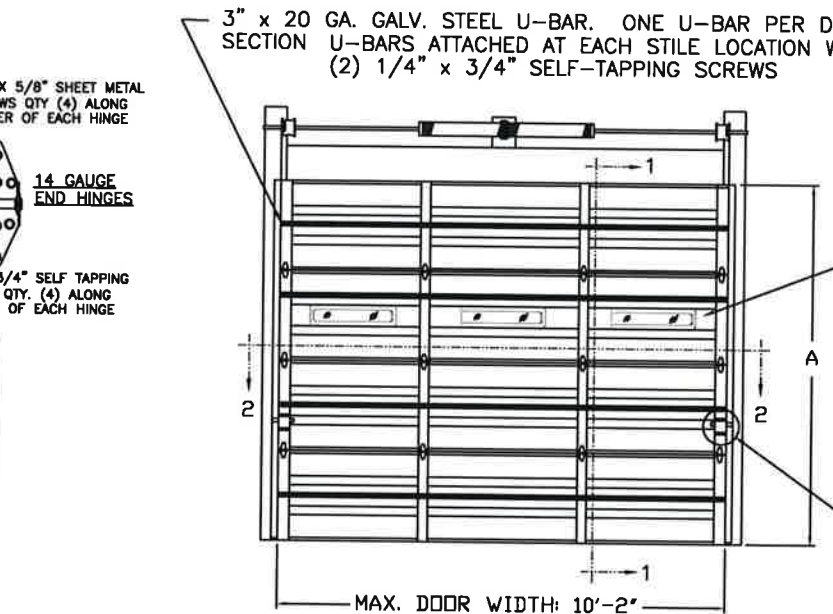
SIDE ELEVATION STANDARD-LIFT TRACK DETAILS



SECTION 2-2



WELDED STEEL JAMBS



SECTION 1-1

OPTIONAL SINGLE PANE OR INSULATED WINDOW LITES. ALL PANES ANNEALED GLASS OR STRONGER. SINGLE PANES 1/8" OR THICKER. INSULATED WINDOWS 1/2" THICK, CONSISTING OF (2) PANES 1/8" THICK. FRAMES SECURED WITH QTY. (10) #8-11 CROSS RECESSED PAN HEAD, TYPE A TAPPING SCREW WITH (3) SCREWS ON EACH HORIZONTAL EDGE AND (2) ON EACH VERTICAL EDGE. SCREW LENGTH 1.5" FOR INSULATED DOORS AND 0.75" FOR UNINSULATED DOORS. MAXIMUM DLO 21-1/4" X 3-1/4".

TWO POINT LOCKING REQ'D

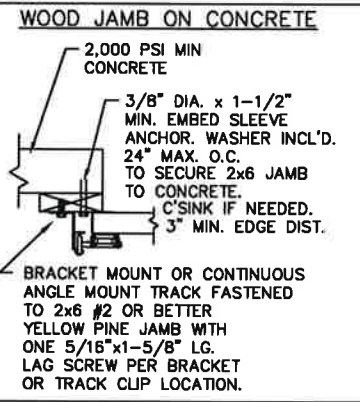
BOTTOM SECTION REINFORCED WITH TEMPERED ALUMINUM EXTRUSION WITH INTEGRAL RETAINER FOR FLEXIBLE VINYL ASTRAGAL

END ROLLER HINGES OF MIN. 14 GA. GALV. STEEL, FASTENED WITH (4) #14 X 5/8" LG. SHT. MTL. SCREWS AND (4) 1/4" X 3/4" SELF-TAPPING SCREWS.

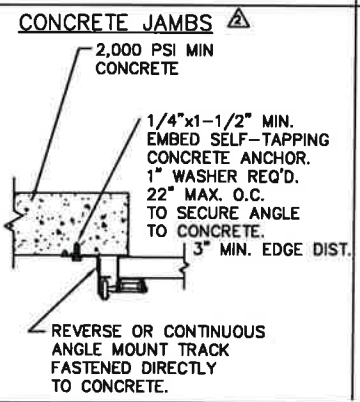
2" 10 BALL SHORT STEEL ROLLER WITH STEEL OR NYLON TIRE

BOTTOM ROLLER BRACKET OF 13 GA. GALV. STEEL, FASTENED WITH (4) #14 X 5/8" LG SHT. MTL. SCREWS

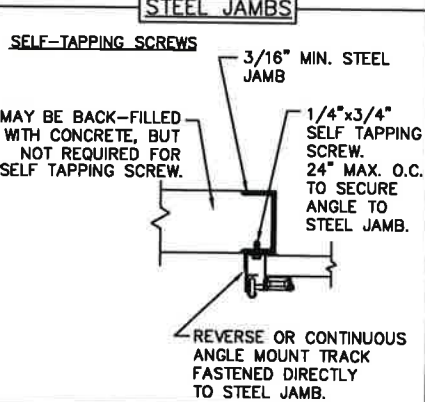
DESIGN LOADS: +30 & -30 P.S.F.  
 TEST LOADS +45 & -45 P.S.F.



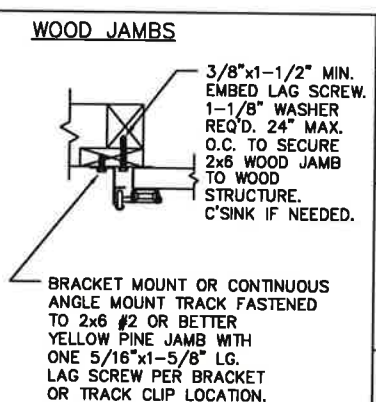
WOOD JAMB ON CONCRETE



CONCRETE JAMBS



STEEL JAMBS



WOOD JAMBS

THE DESIGN OF THE SUPPORTING STRUCTURAL ELEMENTS IS THE RESPONSIBILITY OF THE BUILDING ENGINEER OR ARCHITECT OF RECORD.

MARK WESTERFIELD, P.E.  
 FLORIDA P.E. #48495, NC P.E. #23832,  
 TEXAS P.E. #91513

CLOPAY CORP.  
 ALL RIGHTS RESERVED.



Unless Stated Otherwise TOLERANCES are  
 .0 = ±.031  
 .00 = ±.015  
 .000 = ±.005  
 .0000 = ±.001  
 Degrees = ±1/2"  
 Unless Stated Otherwise DIMENSIONS ARE IN INCHES.

**Clopay CORPORATION**  
 8585 Duke Boulevard  
 Mason, OH 45040 USA  
 Tel. No. 513-770-4800  
 Fax No. 513-770-4853

DESCRIPTION: COMMERCIAL RIBBED DOOR, +/- 30 PSF DESIGN LOAD

DRAWN BY: RJK DATE: 4/19/99 SCALE: NOTED DWG. SIZE B

CHECKED BY: MWW DATE: 4/99 SHEET 1 OF 1

DWG. NO.: 101875

MANUFACTURING PRODUCT CODE:  
 MPC: C-PAN-1E448

WINDLOAD RATING  
**W5**

