

BRAND	MODEL
CLOPAY	904, 904U*, AX*, AXU*
IDEAL	C4AL, C4ALU*

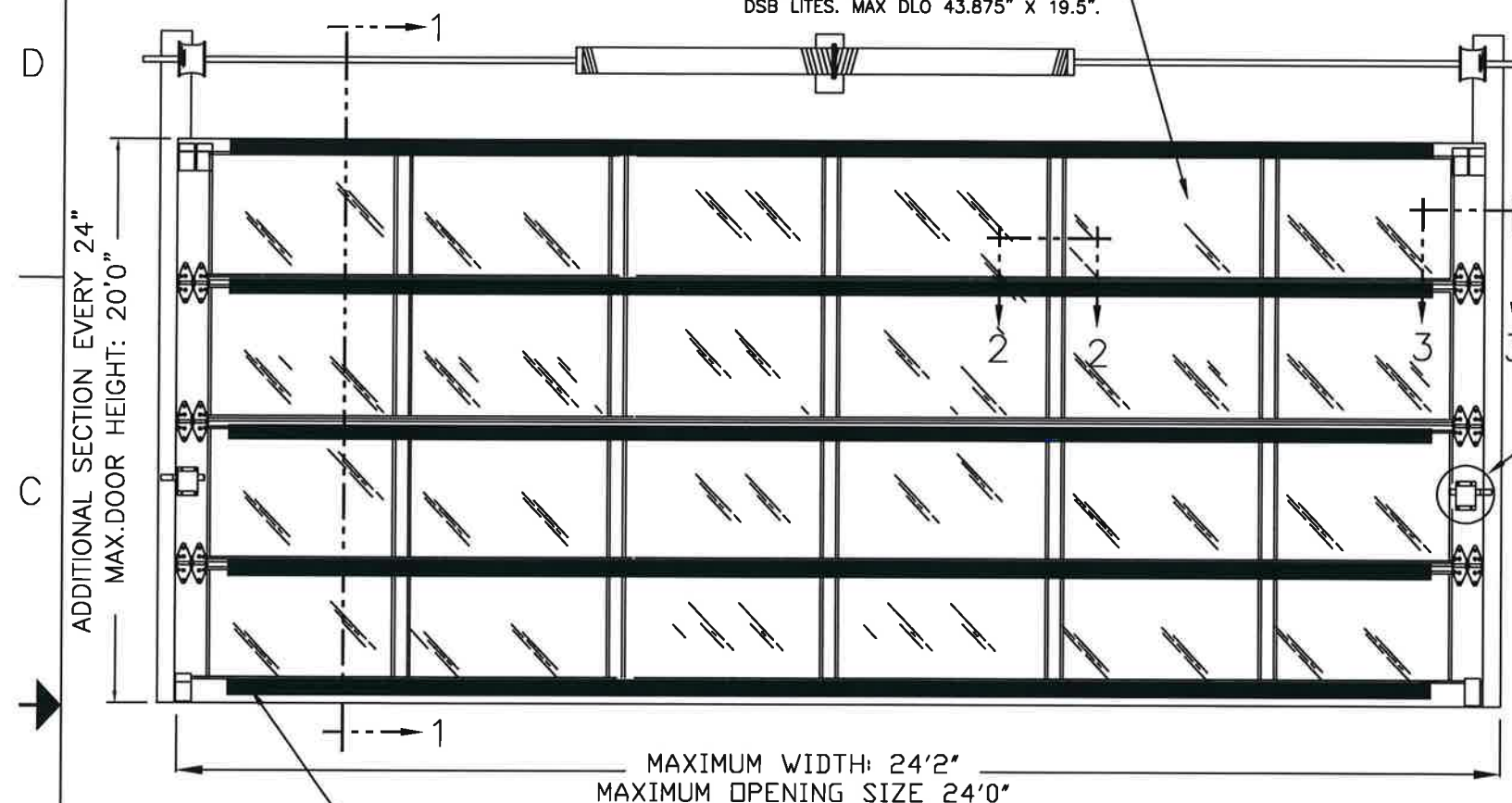
THIS PRODUCT COMPLIES WITH THE 2018 IBC/IRC

SHEET:
1 OF 2

REVISIONS					DESCRIPTION
REV. NO.	ZONE:	DATE:	ECN NO.	APPVD:	
00	ALL	10/22		JDW	INITIAL RELEASE

* - MODEL ONLY AVAILABLE TO 20'2" WIDE.

DSB LITES OR BETTER, ANNEALED OR TEMPERED. INSULATED GLAZING SHALL CONSIST OF 2 ANNEALED OR TEMPERED DSB LITES. MAX DLO 43.875" X 19.5".

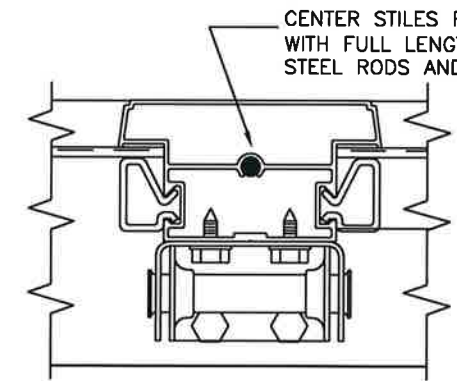


ADDITIONAL SECTION EVERY 24"
MAX. DOOR HEIGHT: 20'0"

MAXIMUM WIDTH: 24'2"
MAXIMUM OPENING SIZE 24'0"

3"x2"x1/4" ALUMINUM L-ANGLES AS SHOWN. ONE L-ANGLE ON TOP OF EACH SECTION PLUS ONE L-ANGLE ON BOTTOM OF DOOR. SEE SECTION 1-1 FOR DETAILS OF ATTACHMENT TO DOOR SECTIONS.

NOTE: DOORS 18'3" TO 20'2" WIDE ARE FIVE PANELS ACROSS. DOORS 20'3" TO 24'2" WIDE ARE SIX PANELS ACROSS (SHOWN).

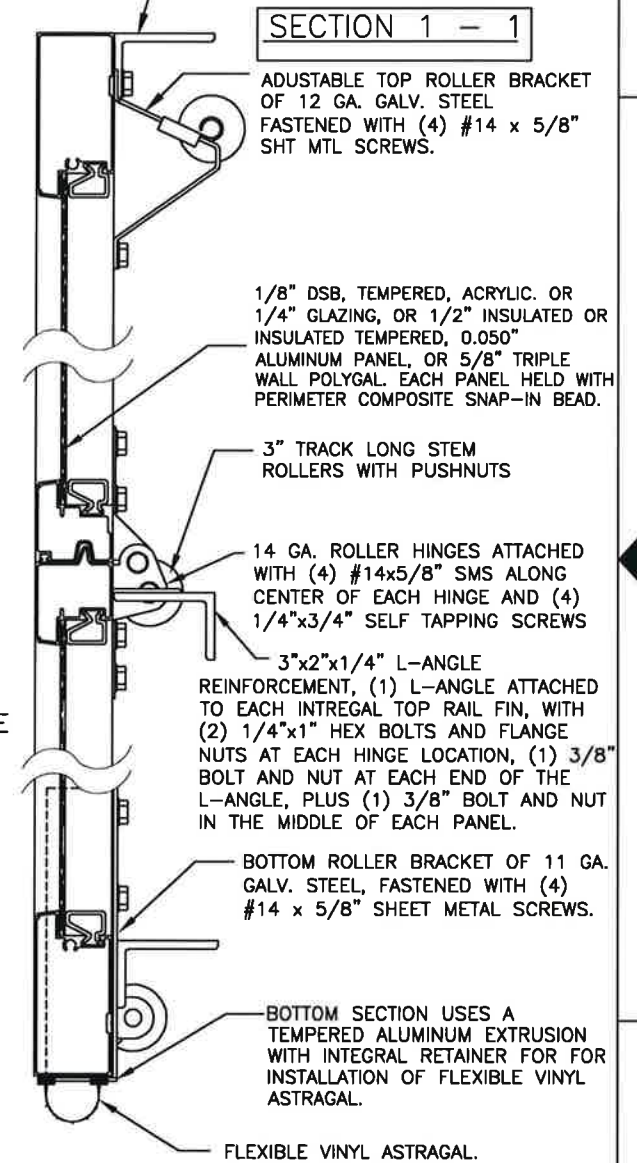


CENTER HINGES
ATTACHED TO INTERM. BOTTOM RAIL WITH (2) #14x5/8" SMS AND TO FIN ON INTERM. TOP RAIL WITH (2) 1/4"-20x1" HEX HEAD MACHINE SCREWS AND NUTS.

SECTIONS PER DOOR HEIGHT	
UP TO 6'0"	3
FROM 6'1" TO 8'0"	4
FROM 8'1" TO 10'0"	5
FROM 10'1" TO 12'0"	6
FROM 12'1" TO 14'0"	7
FROM 14'1" TO 16'0"	8
FROM 16'1" TO 18'0"	9
FROM 18'1" TO 20'0"	10

REINFORCEMENT:
3"x2"x1/4" L-ANGLE
6061 ALUMINUM

3"x2"x1/4" ALUMINUM L-ANGLE ON VERY TOP AND BOTTOM OF DOOR. ATTACHED WITH (2) 1/4"x1" SELF-TAPPING SCREWS AT EACH END, (1) 1/4"x1" SELF-TAPPING SCREW AT EACH INTERMEDIATE STILE LOCATION AND (1) 1/4"x1" SELF-TAPPING SCREW IN THE MIDDLE OF EACH PANEL. (15) TOTAL SELF-TAPPING SCREWS PER L-ANGLE.



ADJUSTABLE TOP ROLLER BRACKET OF 12 GA. GALV. STEEL FASTENED WITH (4) #14 x 5/8" SHT MTL SCREWS.

1/8" DSB, TEMPERED, ACRYLIC. OR 1/4" GLAZING, OR 1/2" INSULATED OR INSULATED TEMPERED, 0.050" ALUMINUM PANEL, OR 5/8" TRIPLE WALL POLYGL. EACH PANEL HELD WITH PERIMETER COMPOSITE SNAP-IN BEAD.

3" TRACK LONG STEM ROLLERS WITH PUSHNUTS

14 GA. ROLLER HINGES ATTACHED WITH (4) #14x5/8" SMS ALONG CENTER OF EACH HINGE AND (4) 1/4"x3/4" SELF TAPPING SCREWS

3"x2"x1/4" L-ANGLE REINFORCEMENT, (1) L-ANGLE ATTACHED TO EACH INTEGRAL TOP RAIL FIN, WITH (2) 1/4"x1" HEX BOLTS AND FLANGE NUTS AT EACH HINGE LOCATION, (1) 3/8" BOLT AND NUT AT EACH END OF THE L-ANGLE, PLUS (1) 3/8" BOLT AND NUT IN THE MIDDLE OF EACH PANEL.

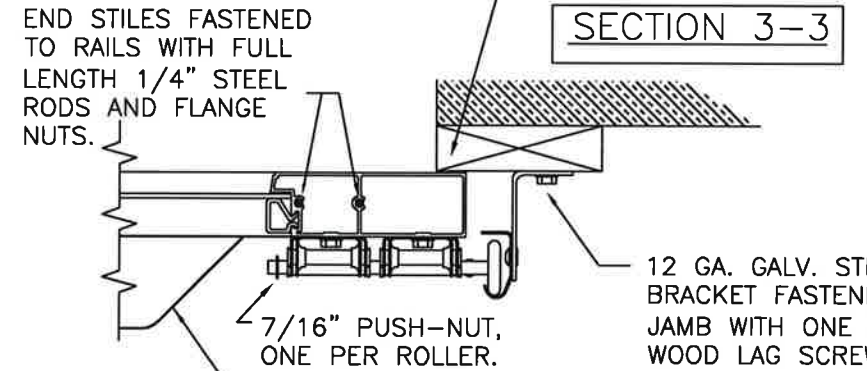
BOTTOM ROLLER BRACKET OF 11 GA. GALV. STEEL, FASTENED WITH (4) #14 x 5/8" SHEET METAL SCREWS.

BOTTOM SECTION USES A TEMPERED ALUMINUM EXTRUSION WITH INTEGRAL RETAINER FOR FOR INSTALLATION OF FLEXIBLE VINYL ASTRAGAL.

FLEXIBLE VINYL ASTRAGAL.

DESIGN LOADS: +25.0, -27.5 PSF
TEST LOADS: +37.5, -41.5 PSF

1" OVERLAP BOTH SIDES



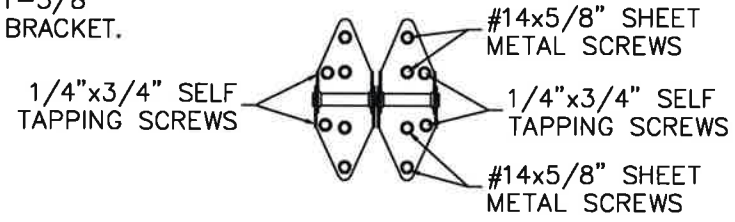
END STILES FASTENED TO RAILS WITH FULL LENGTH 1/4" STEEL RODS AND FLANGE NUTS.

12 GA. GALV. STEEL TRACK BRACKET FASTENED TO WOOD JAMB WITH ONE 5/16"x1-5/8" WOOD LAG SCREW PER BRACKET.

SEE PAGE 2 FOR DIFFERENT JAMB CONFIGURATIONS.

MODEL 904 (6063-T5 ALUMINUM):
TOP RAIL MIN THK 0.075"
STD END STILE MIN THICK 0.075"
STD BTM RAIL MIN THK 0.075"
CENTER STILE PMIN THK 0.075"
INTER. TOP RAIL MIN THK 0.062" W/ 0.100" FIN
INTER. BOTTOM RAIL MIN THK 0.062"

14 GAUGE DOUBLE END ROLLER HINGE FASTENERS



DESIGN ENGINEER:
MARK WESTERFIELD, P.E.
FLORIDA P.E. #48495, NC P.E. #23832, TEXAS P.E. #91513

Clopay CORPORATION	8585 Duke Boulevard Mason, OH 45040 USA Tel. No. 513-770-4800 Fax No. 513-770-4853	CLOPAY WINDLOAD RATING W4
DESCRIPTION: M/N 904 24' WIDE +25/-27.5 PSF		
DRAWN BY: MWW	DATE: 10/10/22	SCALE:
CHECKED BY:	DATE:	SHEET 1 OF 2
DWG. NO.: 105886	VERSION: TDI	

A

BRAND	MODEL
CLOPAY	904, 904U*, AX*, AXU*
IDEAL	C4AL, C4ALU*

SHEET:
2 OF 2

REVISIONS					DESCRIPTION
REV. NO.	ZONE	DATE	ECN NO.	APPVD:	
--	--	--	--	--	SEE PAGE 1 FOR REVISION DETAILS

* - MODEL ONLY AVAILABLE TO 20'2" WIDE.

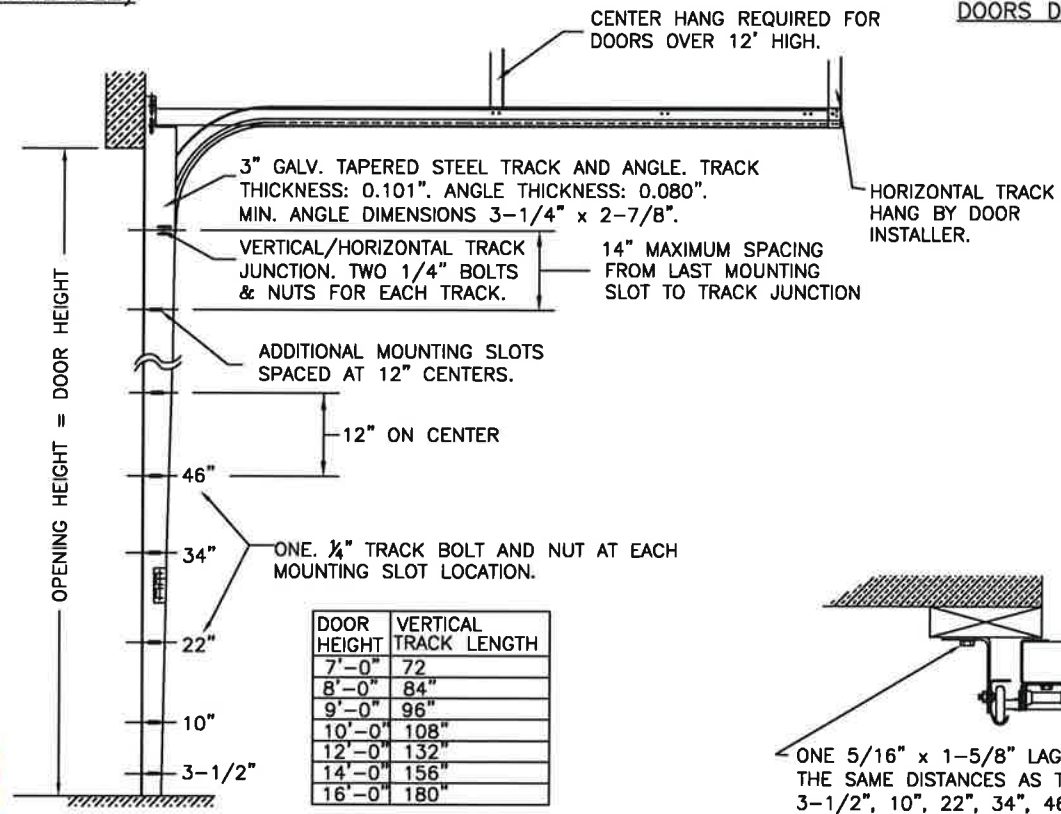
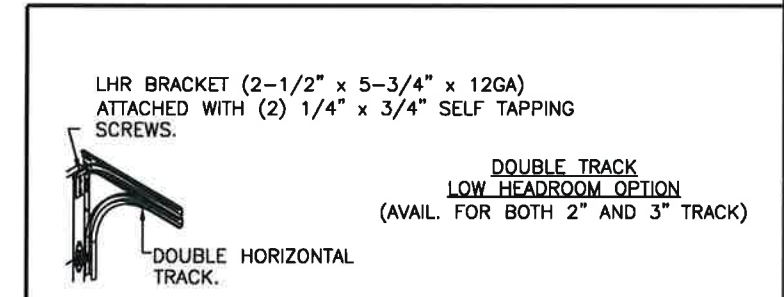
NOTE: HORIZONTAL TRACK CONFIGURATION ABOVE THE DOOR OPENING DOES NOT AFFECT THE WIND LOAD RATING OF THIS DOOR. STANDARD LIFT, LOW HEADROOM, HIGH LIFT, VERTICAL LIFT OR FOLLOW THE ROOF PITCH TRACK IS ALLOWED.

PREPARATION OF JAMBS BY OTHERS
JAMB NOTE: FOR JAMB TYPES AND JAMB ATTACHMENT FASTENER INFORMATION (INCLUDING FASTENER TYPE, SIZE AND SPACING) TO THE SUPPORTING STRUCTURE USE DASMA TDS-161. DESIGN OF THE SUPPORTING STRUCTURAL ELEMENTS SHALL BE THE RESPONSIBILITY OF THE PROFESSIONAL OF RECORD FOR THE BUILDING OR STRUCTURE AND IN ACCORDANCE WITH CURRENT BUILDING CODES FOR THE LOADS LISTED ON THIS DRAWING.

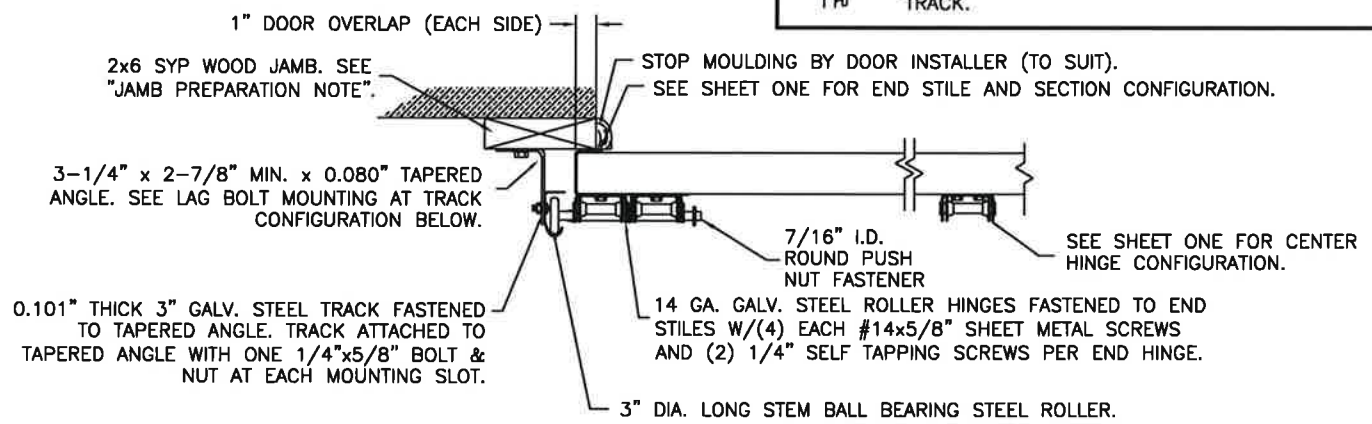
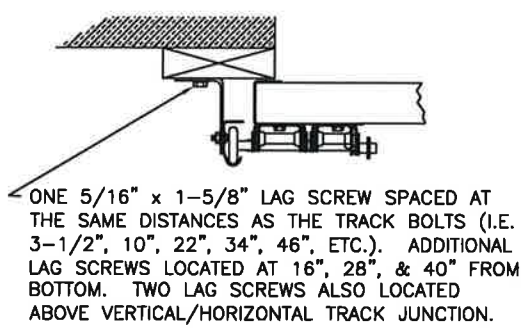
3" TRACK CONFIGURATION
(2" TRACK IS NOT AVAILABLE)

NOTE: HORIZONTAL TRACK CONFIGURATION ABOVE THE DOOR OPENING DOES NOT AFFECT THE WIND LOAD RATING OF THIS DOOR.

JAMB CONFIGURATION
DOORS DOORS WITH 3" TRACK.



DOOR HEIGHT	VERTICAL TRACK LENGTH
7'-0"	72"
8'-0"	84"
9'-0"	96"
10'-0"	108"
12'-0"	132"
14'-0"	156"
16'-0"	180"



SECTION C-C



DESIGN ENGINEER:
MARK WESTERFIELD, P.E.
FLORIDA P.E. #48495, NC P.E. #23832, TEXAS P.E. #91513

DESIGN LOADS: +25.0, -27.5 PSF
TEST LOADS: +37.5, -41.5 PSF

Clopay CORPORATION	8585 Duke Boulevard Mason, OH 45040 USA Tel. No. 513-770-4800 Fax No. 513-770-4853	CLOPAY WINDLOAD RATING W4	
	DESCRIPTION: M/N 904 24' WIDE +25/-27.5 PSF		
DRAWN BY: JDW	DATE: 10/10/22	SCALE:	DWG. SIZE B
CHECKED BY:	DATE:	SHEET 2 OF 2	
DWG. NO.: 105886	VERSION: TDI		