

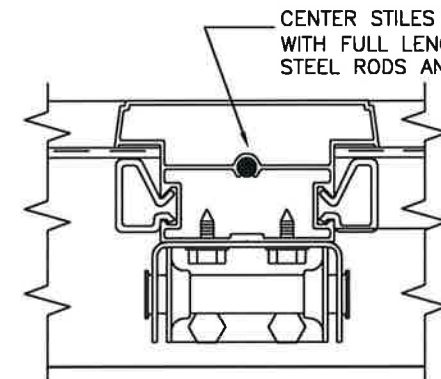
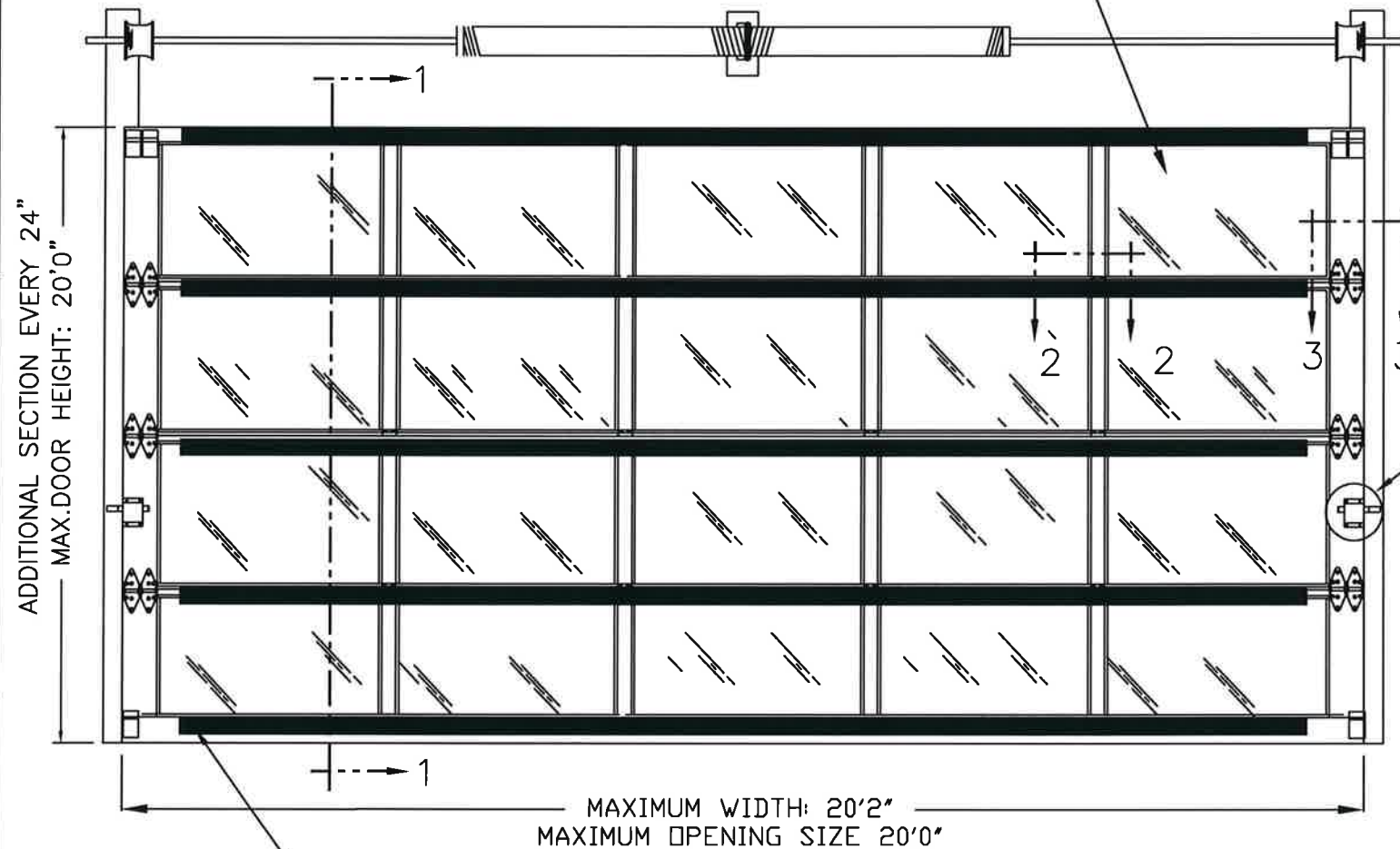
BRAND	MODEL
CLOPAY	904, 904U, AX, AXU
IDEAL	C4AL, C4ALU

THIS PRODUCT COMPLIES WITH THE 2018 IBC/IRC.

SHEET:  
1 OF 2

REVISIONS					DESCRIPTION
REV. NO.	ZONE:	DATE:	ECN NO.	APPVD:	
00		10/22		JDW	INITIAL RELEASE

DSB LITES OR BETTER, ANNEALED OR TEMPERED. INSULATED GLAZING SHALL CONSIST OF 2 ANNEALED OR TEMPERED DSB LITES. MAX DLO 38.0" X 19.5".



CENTER HINGES ATTACHED TO INTERM. BOTTOM RAIL WITH (2) #14x5/8" SMS AND TO FIN ON INTERM. TOP RAIL WITH (2) 1/4"-20x1" HEX HEAD MACHINE SCREWS AND NUTS.

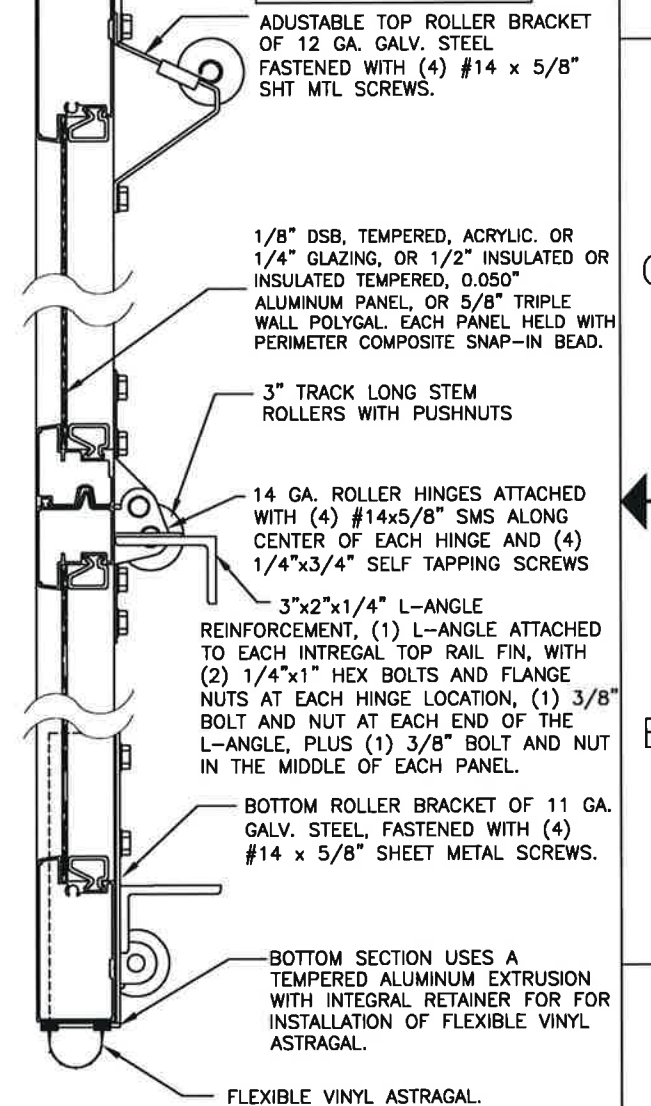
SECTION 2 - 2

SECTIONS PER DOOR HEIGHT	
UP TO 6'0"	3
FROM 6'1" TO 8'0"	4
FROM 8'1" TO 10'0"	5
FROM 10'1" TO 12'0"	6
FROM 12'1" TO 14'0"	7
FROM 14'1" TO 16'0"	8
FROM 16'1" TO 18'0"	9
FROM 18'1" TO 20'0"	10

REINFORCEMENT:  
3"x2"x1/4" L-ANGLE  
6061 ALUMINUM

3"x2"x1/4" ALUMINUM L-ANGLE ON VERY TOP AND BOTTOM OF DOOR. ATTACHED WITH (2) 1/4"x1" SELF-TAPPING SCREWS AT EACH END, (1) 1/4"x1" SELF-TAPPING SCREW AT EACH INTERMEDIATE STILE LOCATION AND (1) 1/4"x1" SELF-TAPPING SCREW IN THE MIDDLE OF EACH PANEL. (13) TOTAL SELF-TAPPING SCREWS PER L-ANGLE.

SECTION 1 - 1



ADJUSTABLE TOP ROLLER BRACKET OF 12 GA. GALV. STEEL FASTENED WITH (4) #14 x 5/8" SHT MTL SCREWS.

1/8" DSB, TEMPERED, ACRYLIC. OR 1/4" GLAZING, OR 1/2" INSULATED OR INSULATED TEMPERED, 0.050" ALUMINUM PANEL, OR 5/8" TRIPLE WALL POLYGL. EACH PANEL HELD WITH PERIMETER COMPOSITE SNAP-IN BEAD.

3" TRACK LONG STEM ROLLERS WITH PUSHNUTS

14 GA. ROLLER HINGES ATTACHED WITH (4) #14x5/8" SMS ALONG CENTER OF EACH HINGE AND (4) 1/4"x3/4" SELF TAPPING SCREWS

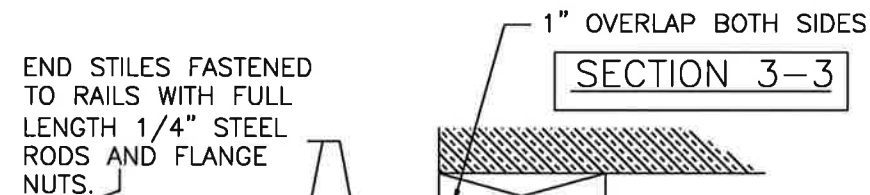
3"x2"x1/4" L-ANGLE REINFORCEMENT, (1) L-ANGLE ATTACHED TO EACH INTEGRAL TOP RAIL FIN, WITH (2) 1/4"x1" HEX BOLTS AND FLANGE NUTS AT EACH HINGE LOCATION, (1) 3/8" BOLT AND NUT AT EACH END OF THE L-ANGLE, PLUS (1) 3/8" BOLT AND NUT IN THE MIDDLE OF EACH PANEL.

BOTTOM ROLLER BRACKET OF 11 GA. GALV. STEEL, FASTENED WITH (4) #14 x 5/8" SHEET METAL SCREWS.

BOTTOM SECTION USES A TEMPERED ALUMINUM EXTRUSION WITH INTEGRAL RETAINER FOR INSTALLATION OF FLEXIBLE VINYL ASTRAGAL.

FLEXIBLE VINYL ASTRAGAL.

3"x2"x1/4" ALUMINUM L-ANGLES AS SHOWN. ONE L-ANGLE ON TOP OF EACH SECTION PLUS ONE L-ANGLE ON BOTTOM OF DOOR. SEE SECTION 1-1 FOR DETAILS OF ATTACHMENT TO DOOR SECTIONS.



SECTION 3-3

END STILES FASTENED TO RAILS WITH FULL LENGTH 1/4" STEEL RODS AND FLANGE NUTS.

1" OVERLAP BOTH SIDES

7/16" PUSH-NUT, ONE PER ROLLER.

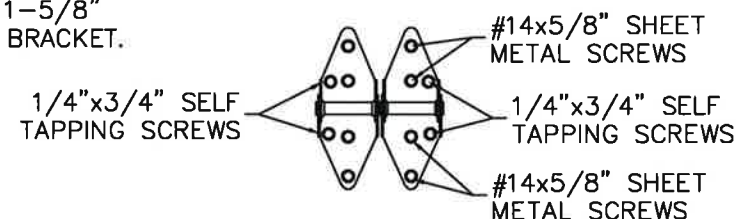
INTERGAL FIN ON INTER. TOP RAILS NOTCH CUT AT END STILES.

12 GA. GALV. STEEL TRACK BRACKET FASTENED TO WOOD JAMB WITH ONE 5/16"x1-5/8" WOOD LAG SCREW PER BRACKET.

SEE PAGE 2 FOR DIFFERENT JAMB CONFIGURATIONS.

MODEL 904 (6063-T5 ALUMINUM):  
TOP RAIL MIN THK 0.075"  
STD END STILE MIN THK 0.075"  
STD BTM RAIL MIN THK 0.075"  
CENTER STILE PMIN THK 0.075"  
INTER. TOP RAIL MIN THK 0.062" W/ 0.100" FIN  
INTER. BOTTOM RAIL MIN THK 0.062"

14 GAUGE DOUBLE END ROLLER HINGE FASTENERS



10/12/22

DESIGN ENGINEER:  
MARK WESTERFIELD, P.E.  
FLORIDA P.E. #48495, NC P.E. #23832, TEXAS P.E. #91513

DESIGN LOADS: +36.0, -40.0 PSF  
TEST LOADS: +54.0, -60.0 PSF

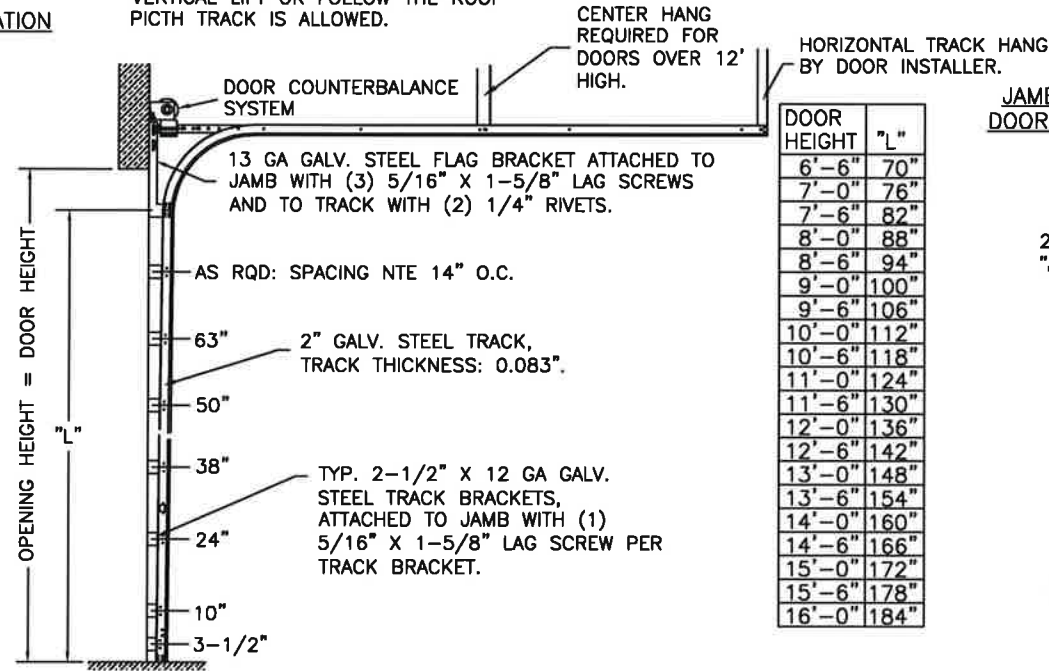
<b>Clopay CORPORATION</b>		8585 Duke Boulevard Mason, OH 45040 USA Tel. No. 513-770-4800 Fax No. 513-770-4853	CLOPAY WINDLOAD RATING <b>W6</b>
DESCRIPTION: M/N 904 20' WIDE +36/-40 PSF			
DRAWN BY: JDW	DATE: 10/10/22	SCALE:	DWG. SIZE <b>B</b>
CHECKED BY: JDW	DATE: 10/10/22	SHEET 1 OF 2	
DWG. NO.: 105882		VERSION: TDI	

BRAND	MODEL
CLOPAY	904, 904U, AX, AXU
IDEAL	C4AL, C4ALU

SHEET: 2 OF 2		REVISIONS			
REV. NO.	ZONE:	DATE:	ECN NO.	APPVD:	DESCRIPTION
--	--	--	--	--	SEE PAGE 1 FOR REVISION DETAILS

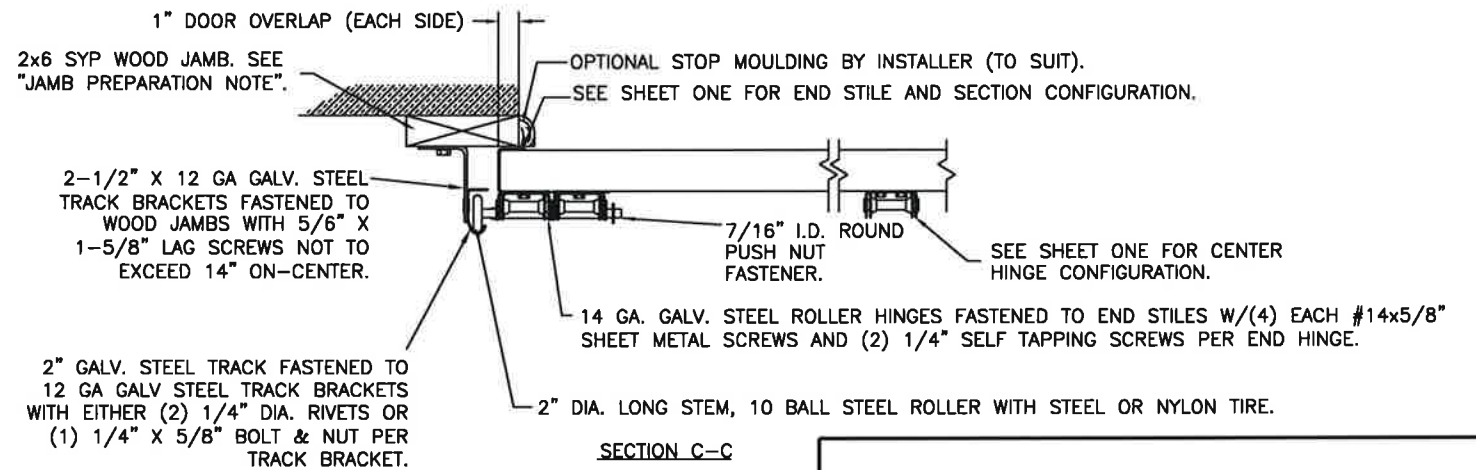
NOTE: HORIZONTAL TRACK CONFIGURATION ABOVE THE DOOR OPENING DOES NOT AFFECT THE WIND LOAD RATING OF THIS DOOR. STANDARD LIFT, LOW HEADROOM, HIGH LIFT, VERTICAL LIFT OR FOLLOW THE ROOF PITCH TRACK IS ALLOWED.

2" TRACK CONFIGURATION



DOOR HEIGHT	"L"
6'-6"	70"
7'-0"	76"
7'-6"	82"
8'-0"	88"
8'-6"	94"
9'-0"	100"
9'-6"	106"
10'-0"	112"
10'-6"	118"
11'-0"	124"
11'-6"	130"
12'-0"	136"
12'-6"	142"
13'-0"	148"
13'-6"	154"
14'-0"	160"
14'-6"	166"
15'-0"	172"
15'-6"	178"
16'-0"	184"

JAMB CONFIGURATION DOORS WITH 2" TRACK.



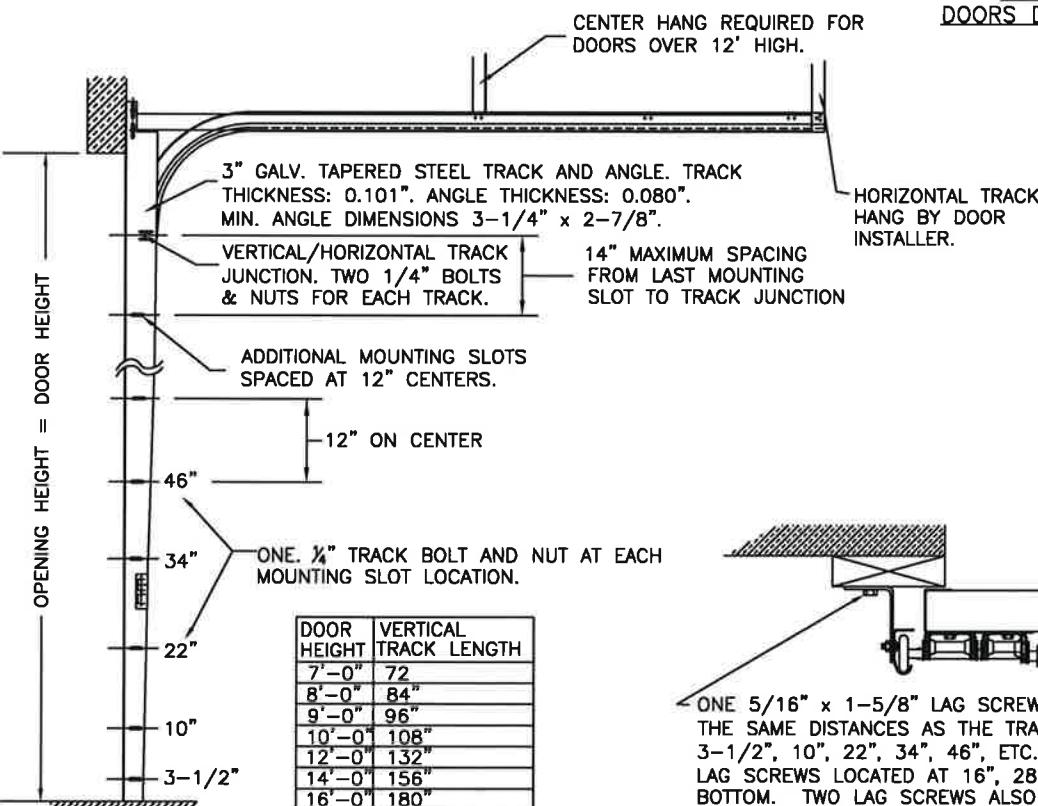
SECTION C-C

PREPARATION OF JAMBS BY OTHERS

JAMB NOTE: FOR JAMB TYPES AND JAMB ATTACHMENT FASTENER INFORMATION (INCLUDING FASTENER TYPE, SIZE AND SPACING) TO THE SUPPORTING STRUCTURE USE DASMA TDS-161. DESIGN OF THE SUPPORTING STRUCTURAL ELEMENTS SHALL BE THE RESPONSIBILITY OF THE PROFESSIONAL OF RECORD FOR THE BUILDING OR STRUCTURE AND IN ACCORDANCE WITH CURRENT BUILDING CODES FOR THE LOADS LISTED ON THIS DRAWING.

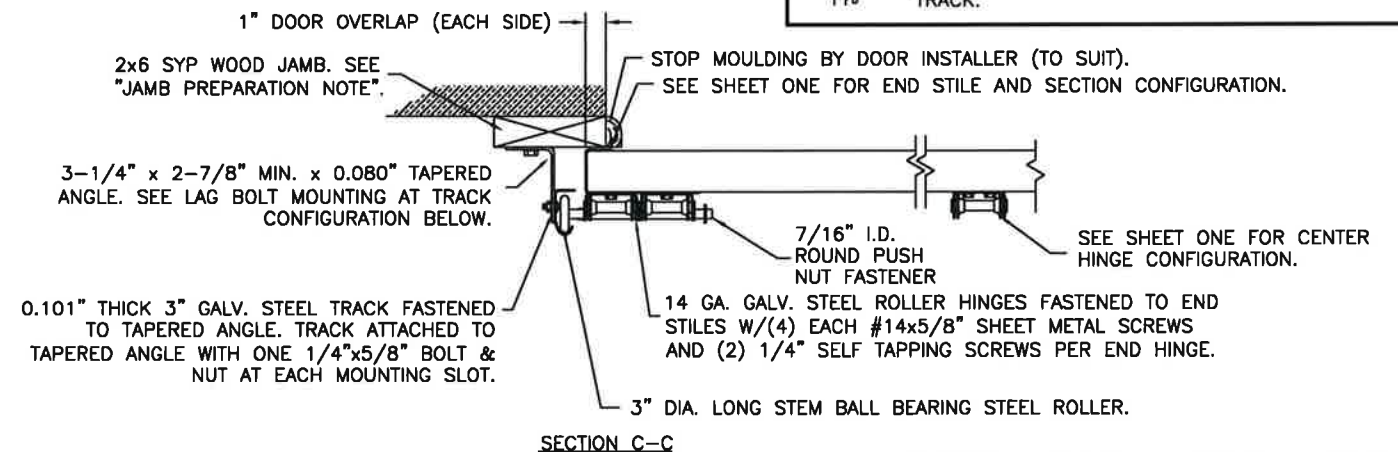
3" TRACK CONFIGURATION

NOTE: HORIZONTAL TRACK CONFIGURATION ABOVE THE DOOR OPENING DOES NOT AFFECT THE WIND LOAD RATING OF THIS DOOR.

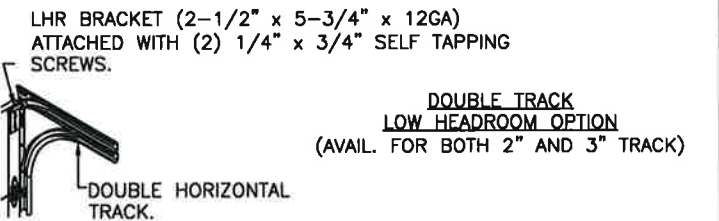


DOOR HEIGHT	VERTICAL TRACK LENGTH
7'-0"	72"
8'-0"	84"
9'-0"	96"
10'-0"	108"
12'-0"	132"
14'-0"	156"
16'-0"	180"

JAMB CONFIGURATION DOORS WITH 3" TRACK.



SECTION C-C



DESIGN LOADS: +36.0, -40.0 PSF  
TEST LOADS: +54.0, -60.0 PSF



DESIGN ENGINEER:  
MARK WESTERFIELD, P.E.  
FLORIDA P.E. #48495, NC P.E. #23832, TEXAS P.E. #91513

<b>Clopay</b> CORPORATION	8585 Duke Boulevard Mason, OH 45040 USA Tel. No. 513-770-4800 Fax No. 513-770-4853	CLOPAY WINDLOAD RATING <b>W6</b>
DESCRIPTION: M/N 904 20' WIDE +36/-40 PSF		
DRAWN BY: JDW	DATE: 10/10/22	SCALE: DWG. B
CHECKED BY: JDW	DATE: 10/10/22	SHEET 2 OF 2
DWG. NO.: 105882	VERSION: TDI	