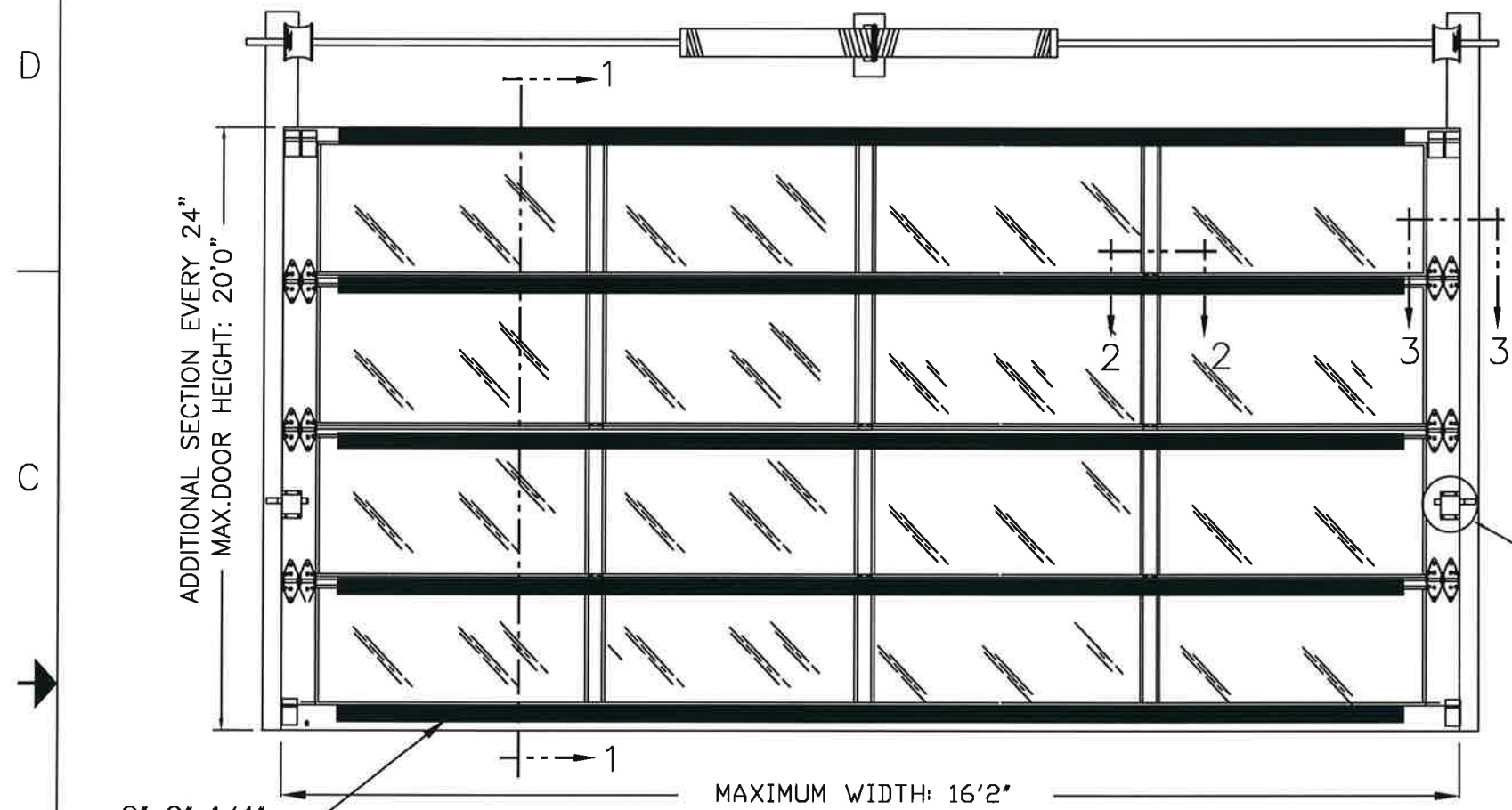


BRAND	MODEL
CLOPAY	904, 904U, AX, AXU
IDEAL	C4AL, C4ALU

THIS PRODUCT COMPLIES WITH THE 2018 IBC/IRC.

SHEET:
1 OF 4

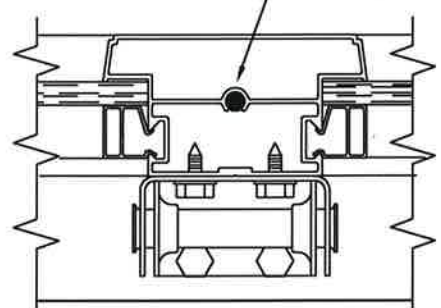
REVISIONS					DESCRIPTION
REV. NO.	ZONE:	DATE:	ECN NO.	APPVD:	
00	ALL	10/22		JDW	INITIAL RELEASE



3"x2"x1/4" ALUMINUM L-ANGLE. TOP OF EACH SECTION, PLUS ONE EXTRA AT BOTTOM OF DOOR.

MAXIMUM WIDTH: 16'2"
MAXIMUM OPENING SIZE 16'0"
MAX. DLO: 42-1/4" X 18-1/8"

CENTER STILES FASTENED TO RAILS WITH FULL LENGTH 1/4" DIA. THREADED STEEL RODS AND FLANGE NUTS.



CENTER HINGES (SEE DETAILS ON PAGE 4) ATTACHED TO INTERM. BOTTOM RAIL WITH (2) #14x5/8" SMS AND TO FIN ON INTERM. TOP RAIL WITH (2) 1/4"-20x1" HEX HEAD MACHINE SCREWS AND NUTS.

SECTION 2 - 2

TWO POINT LOCKING.

REINFORCEMENT: 3"x2"x1/4" L-ANGLE 6061 ALUMINUM

3" x 2" x 1/4" ALUMINUM ANGLE ON TOP SECTION AND BOTTOM OF BOTTOM SECTION ATTACHED WITH (1) 1/4"x3/4" SELF-TAPPING SCREW PER STILE LOCATION AND AT EACH END.

SECTION 1 - 1

ADJUSTABLE TOP ROLLER BRACKET OF 12 GA. GALV. STEEL FASTENED WITH (4) #14 x 5/8" SHT MTL SCREWS.

LAMINATED GLASS (SEE "GLAZING DETAIL" ON PAGE 2 FOR DETAILS)

SHORT-STEM NYLON TIRE 10 BALL ROLLERS.

14 GA. ROLLER HINGES ATTACHED WITH (4) #14x5/8" SMS ALONG CENTER OF EACH HINGE AND (4) 1/4"x3/4" SELF TAPPING SCREWS

3"x2"x1/4" L-ANGLE REINFORCEMENT, (1) ATTACHED TO EACH INTERGAL TOP RAIL FIN, WITH (2) 1/4" HEX BOLTS AND FLANGE NUTS AT EACH INTERMEDIATE HINGE LOCATION, AND (2) 3/8" BOLTS AND NUTS, (1) AT EACH END OF THE L-ANGLE.

BOTTOM ROLLER BRACKET OF 11 GA. GALV. STEEL, FASTENED WITH (4) #14 x 5/8" SHEET METAL SCREWS.

BOTTOM SECTION USES A TEMPERED ALUMINUM EXTRUSION WITH INTEGRAL RETAINER FOR FOR INSTALLATION OF FLEXIBLE VINYL ASTRAGAL. SEE PAGE 4.

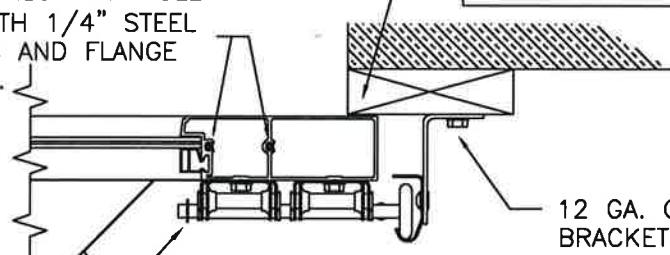
FLEXIBLE VINYL ASTRAGAL.

SECTIONS PER DOOR HEIGHT	
UP TO 6'0"	3
FROM 6'1" TO 8'0"	4
FROM 8'1" TO 10'0"	5
FROM 10'1" TO 12'0"	6
FROM 12'1" TO 14'0"	7
FROM 14'1" TO 16'0"	8
FROM 16'1" TO 18'0"	9
FROM 18'1" TO 20'0"	10

1" OVERLAP BOTH SIDES

SECTION 3-3

END STILES FASTENED TO RAILS WITH FULL LENGTH 1/4" STEEL RODS AND FLANGE NUTS.



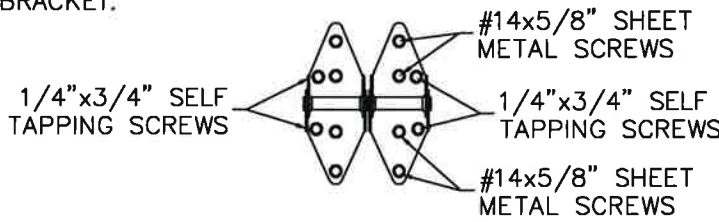
12 GA. GALV. STEEL TRACK BRACKET FASTENED TO WOOD JAMB WITH ONE 5/16"x1-5/8" WOOD LAG SCREW PER BRACKET.

7/16" PUSH-NUT, ONE PER ROLLER.

INTERGAL FIN ON INTER. TOP RAILS NOTCH CUT AT END STILES.

SEE PAGE 2 FOR DIFFERENT JAMB CONFIGURATIONS.

14 GAUGE DOUBLE END ROLLER HINGE FASTENERS



10/12/22

DESIGN ENGINEER:
MARK WESTERFIELD, P.E.
FLORIDA P.E. #48495, NC P.E. #23832, TEXAS P.E. #91513

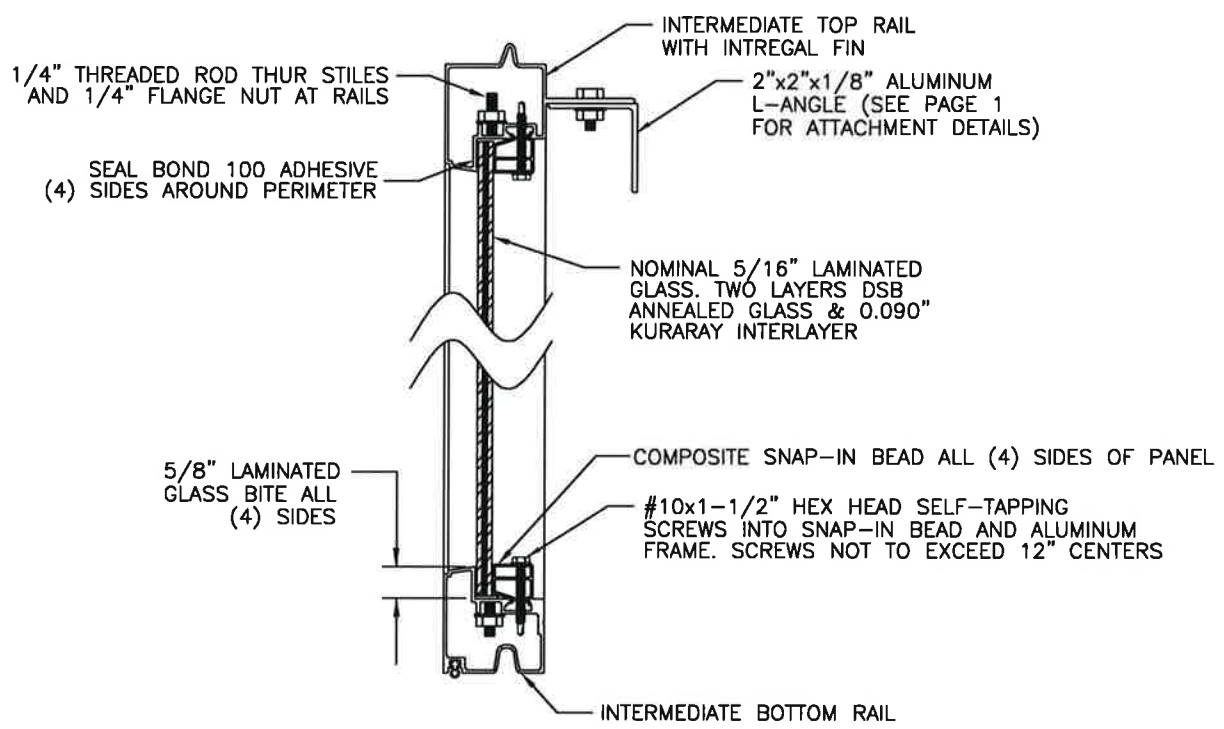
DESIGN LOADS: +46.0, -52.0 PSF

Clopay CORPORATION	8585 Duke Boulevard Mason, OH 45040 USA Tel. No. 513-770-4800 Fax No. 513-770-4853	CLOPAY WINDLOAD RATING W8
DESCRIPTION: M/N 904 16' WIDE +46/-52 PSF		
DRAWN BY: JDW	DATE: 10/10/22	SCALE:
CHECKED BY: JDW	DATE: 10/10/22	SHEET 1 OF 4
DWG. NO.: 105609	VERSION: TDI	

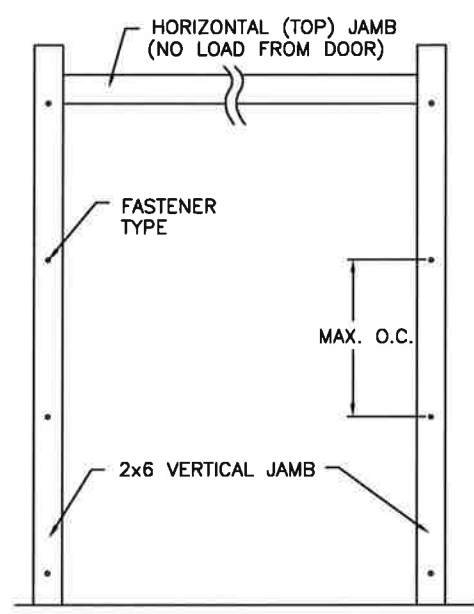
DWG. SIZE B

BRAND	MODEL
CLOPAY	904, 904U, AX, AXU
IDEAL	C4AL, C4ALU

SHEET: 2 OF 4		REVISIONS				
REV. NO.	ZONE:	DATE:	ECN NO.	APPVD:	DESCRIPTION	
---	---	---	---	---	SEE PAGE 1 FOR REVISION DETAILS	



GLAZING DETAIL
INTERMEDIATE SECTION SHOWN



JAMB TO SUPPORTING STRUCTURE ATTACHMENT

- NOTES:
- ALL THE LOAD FROM THE DOOR IS TRANSFERRED TO THE TRACK AND THEN FROM THE TRACK TO THE 2x6 VERTICAL SYP (GRADE #2 OR BETTER) JAMBS. NO LOAD FROM THE DOOR IS TRANSFERRED TO THE HORIZONTAL (TOP) JAMB.
 - EACH VERTICAL JAMB SEES A MAXIMUM DESIGN LOAD OF +368 LB. PER LINEAR FOOT OF JAMB.
 - ALL JAMB FASTENERS MAY BE (BUT ARE NOT REQUIRED TO BE) COUNTERSUNK TO PROVIDE A FLUSH MOUNTING SURFACE.
 - A 1/3 STRESS INCREASE FOR WIND LOAD WAS NOT USED IN THE CALCULATION OF ALLOWABLE LOADS FOR ANCHORS AND FASTENERS FOR STEEL, CONCRETE AND MASONRY.

PREPARATION OF JAMBS BY OTHERS

NOTE: THE DESIGN OF THE SUPPORTING STRUCTURAL ELEMENTS SHALL BE THE RESPONSIBILITY OF THE PROFESSIONAL OF RECORD FOR THE BUILDING OR STRUCTURE AND IN ACCORDANCE WITH CURRENT BUILDING CODES FOR THE LOADS LISTED ON THIS DRAWING.

2x6 JAMB TO SUPPORTING STRUCTURE ATTACHMENT
(NOT TO BE USED FOR ATTACHMENT OF TRACK ANGLE TO 2x6 VERTICAL JAMBS OR SUPPORTING STRUCTURE)

BUILDING TYPE	FASTENER TYPE	MAXIMUM ON-CENTER DISTANCE BETWEEN FASTENERS*	STEEL WASHERS REQUIRED?
C-90 CONCRETE BLOCK	1/4" x 1-1/4" EMBED CRETE-FLEX CONCRETE ANCHOR	7-3/4"	YES
3,350 PSI MIN. CONCRETE	1/4" x 1-3/4" EMBED CRETE-FLEX CONCRETE ANCHOR	20-1/4"	YES
2,000 PSI MIN. CONCRETE	1/4" x 1-3/4" EMBED TAPCON CONCRETE ANCHOR	14-1/4"	YES
2,500 PSI MIN. CONCRETE	3/8" x 1-3/4" EMBED ITW TRUBOLT WEDGE CONCRETE ANCHOR WITH SYP 0.55 SG	14"	1" O.D.
WOOD FRAME (SYP 0.55 SG)	1/2" x 1-1/2" EMBED LAG SCREW WITH 1-3/8" O.D. WASHER	17"	YES
14 GA MIN. STEEL JAMB	1/4" -14 ITW BUILDDEX TEKS SELF-DRILLING FASTENER	7-3/4"	NO
12 GA MIN. STEEL JAMB	1/4" -14 ITW BUILDDEX TEKS SELF-DRILLING FASTENER	10-3/4"	NO
1/8" MIN. STEEL JAMB	1/4" -14 ITW BUILDDEX TEKS SELF-DRILLING FASTENER	12-3/4"	NO

NOTE: FOR DOORS WITH CONTINUOUS OR REVERSE ANGLE TRACK, THESE VALUES CAN BE USED TO DIRECTLY ATTACH THE TRACK ANGLE TO THE WALL.

* FIRST (BOTTOM) ANCHOR STARTING AT NO MORE THAN HALF OF THE MAXIMUM ON-CENTER DISTANCE. HIGHEST ANCHOR INSTALLED AT LEAST AS HIGH AS THE DOOR OPENING.
CLOPAY DOES NOT SUPPLY JAMB ATTACHMENT FASTENERS.
MINIMUM DISTANCE BETWEEN CENTER OF ANCHOR AND EDGE OF CONCRETE BLOCK: 2-1/2", EXCLUDING STUCCO THICKNESS.



10/12/22

DESIGN ENGINEER:
MARK WESTERFIELD, P.E.
FLORIDA P.E. #48495, NC P.E. #23832, TEXAS P.E. #91513

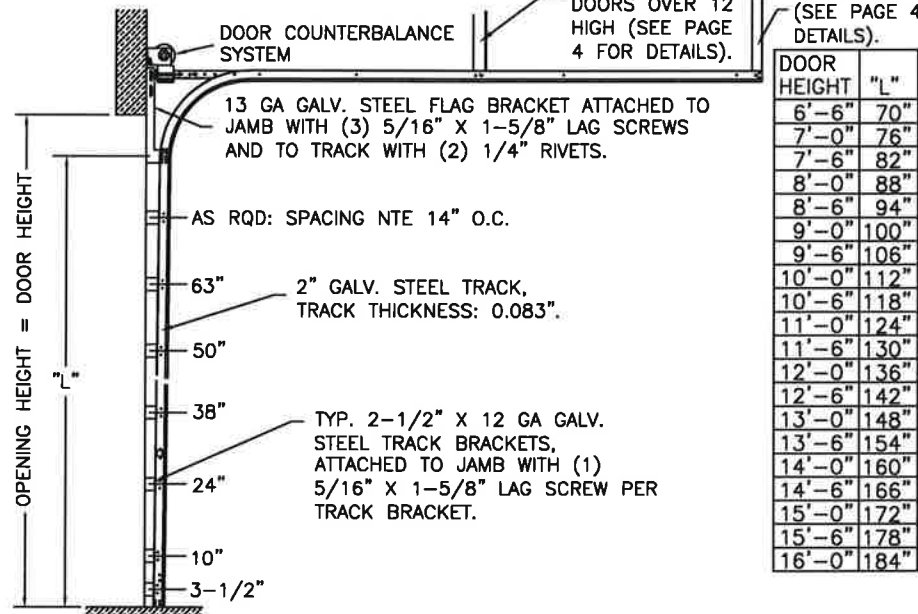
	8585 Duke Boulevard Mason, OH 45040 USA Tel. No. 513-770-4800 Fax No. 513-770-4853	CLOPAY WINDLOAD RATING	
	W8		
DESCRIPTION: M/N 904 16' WIDE +46/-52 PSF			
DRAWN BY: JDW	DATE: 10/10/22	SCALE:	DWG. SIZE B
CHECKED BY: JDW	DATE: 10/10/22	SHEET 2 OF 4	
DWG. NO.: 105609		VERSION: TDI	

BRAND	MODEL
CLOPAY	904, 904U, AX, AXU
IDEAL	C4AL, C4ALU

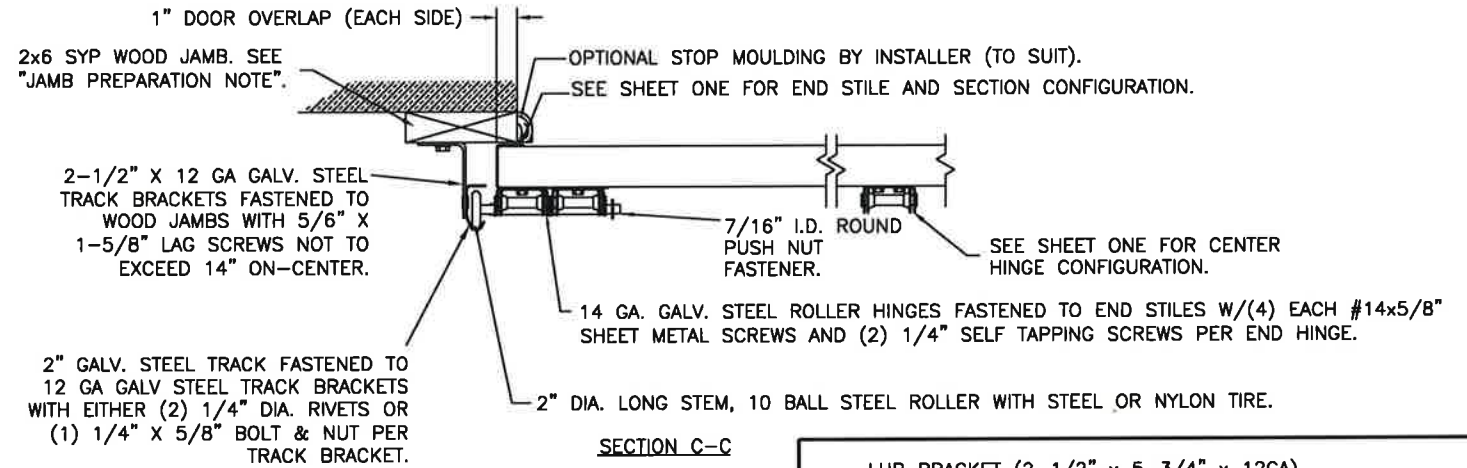
SHEET:	REVISIONS					
3 OF 4	REV. NO.	ZONE:	DATE:	ECN NO.	APPVD:	DESCRIPTION
	--	--	--	--	--	SEE PAGE 1 FOR REVISION DETAILS

2" TRACK CONFIGURATION

NOTE: HORIZONTAL TRACK CONFIGURATION ABOVE THE DOOR OPENING DOES NOT AFFECT THE WIND LOAD RATING OF THIS DOOR.



JAMB CONFIGURATION DOORS WITH 2" TRACK.



SECTION C-C

PREPARATION OF JAMBS BY OTHERS.

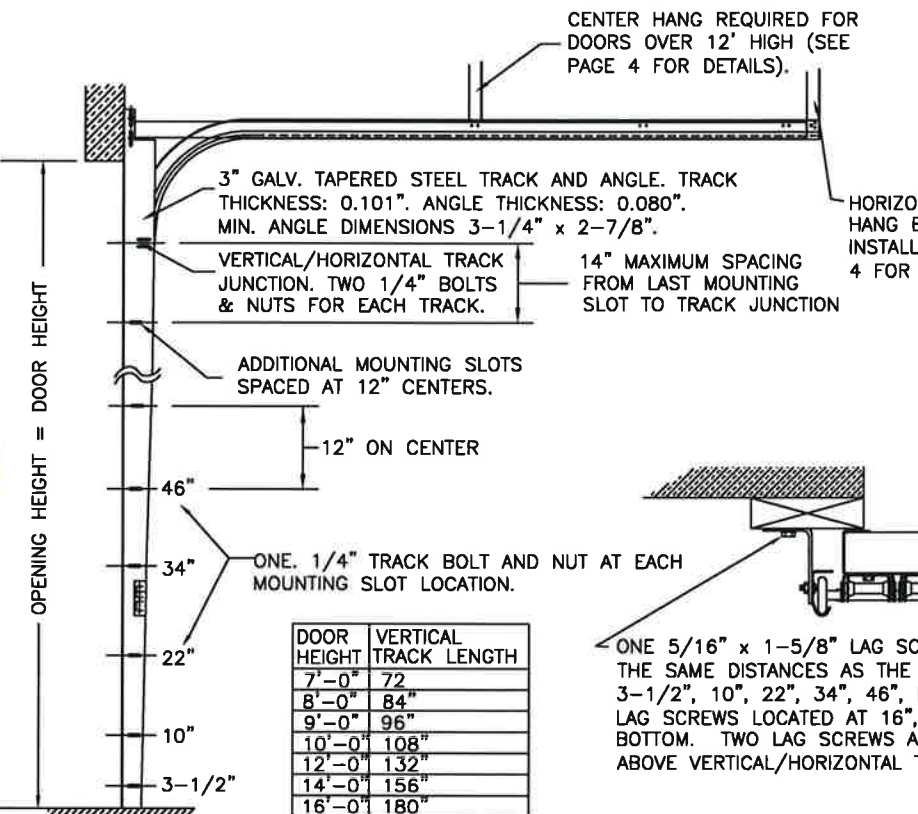
LHR BRACKET (2-1/2" x 5-3/4" x 12GA) ATTACHED WITH (2) 1/4" x 3/4" SELF TAPPING SCREWS. NOTE THAT LHR BRACKETS ARE ALSO USED WITH "DOUBLE END STILE" AS SHOWN IN ZONE B-3 SHEET 1.

DOUBLE TRACK LOW HEADROOM OPTION
(AVAIL. FOR BOTH 2" AND 3" TRACK)

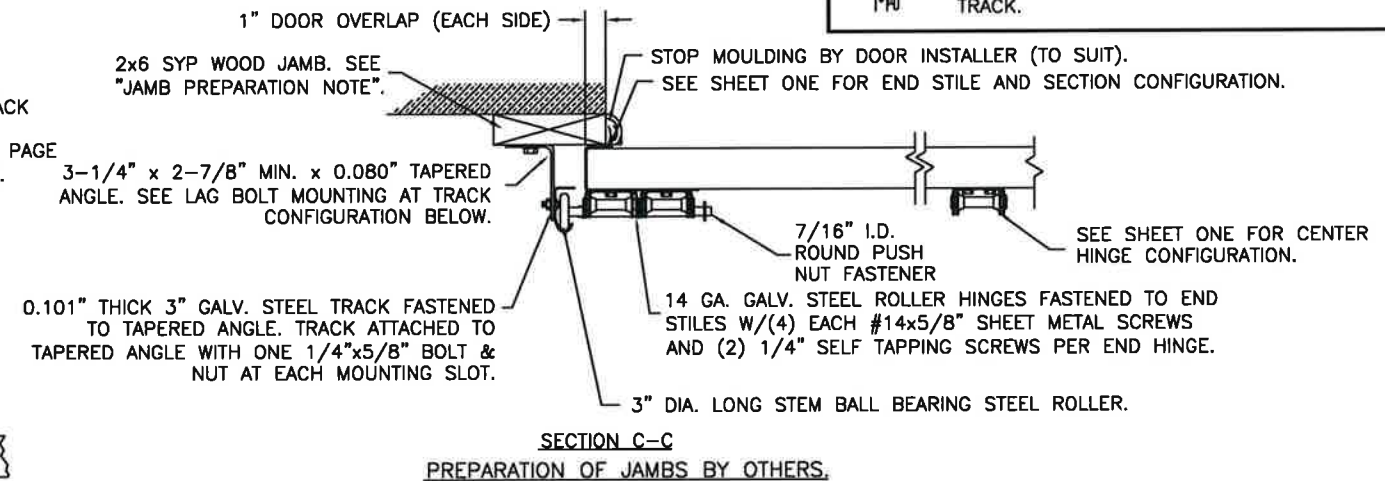
DOUBLE HORIZONTAL TRACK.

3" TRACK CONFIGURATION

NOTE: HORIZONTAL TRACK CONFIGURATION ABOVE THE DOOR OPENING DOES NOT AFFECT THE WIND LOAD RATING OF THIS DOOR.



JAMB CONFIGURATION DOORS WITH 3" TRACK.



SECTION C-C

PREPARATION OF JAMBS BY OTHERS.



DESIGN ENGINEER:
MARK WESTERFIELD, P.E.
FLORIDA P.E. #48495, NC P.E. #23832, TEXAS P.E. #91513

Clopay CORPORATION	8585 Duke Boulevard Mason, OH 45040 USA Tel. No. 513-770-4800 Fax No. 513-770-4853	CLOPAY WINDLOAD RATING W8
DESCRIPTION: M/N 904 16' WIDE +46/-52 PSF		
DRAWN BY: JDW	DATE: 10/10/22	SCALE: DWG. B
CHECKED BY: JDW	DATE: 10/10/22	SHEET 3 OF 4 SIZE B
DWG. NO.: 105608	VERSION: TD!	

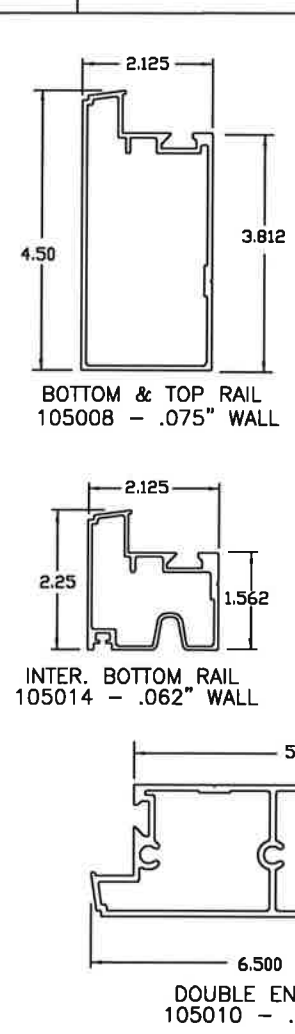
BRAND	MODEL
CLOPAY	904, 904U, AX, AXU
IDEAL	C4AL, C4ALU

ALUMINUM PROFILES, HARDWARE & TRACK PARTS

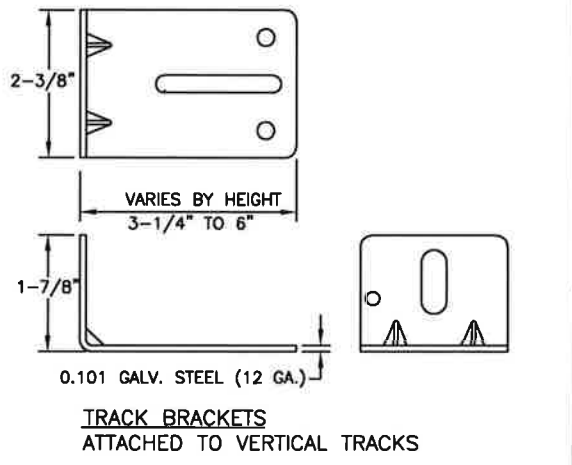
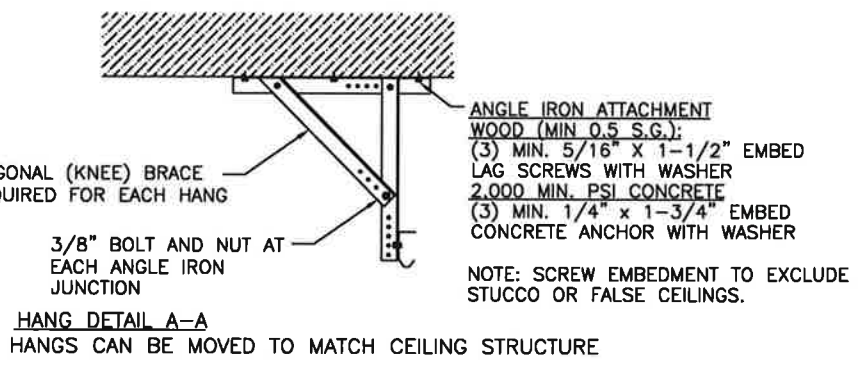
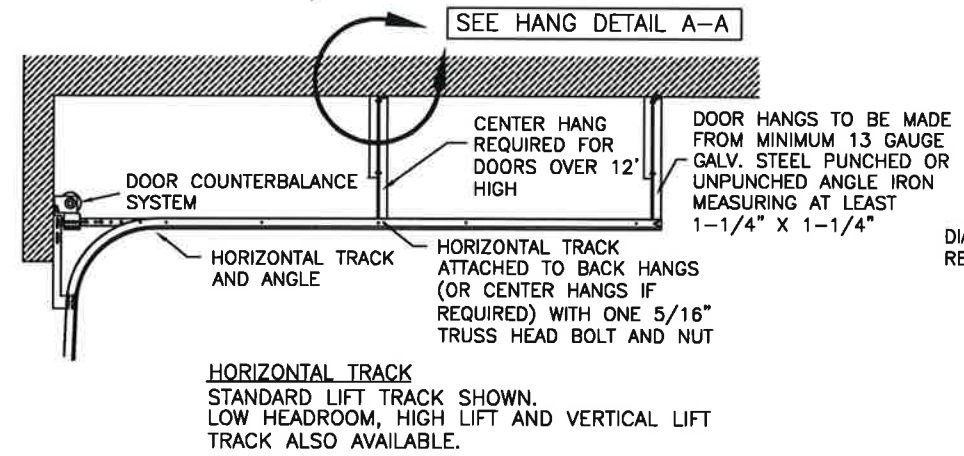
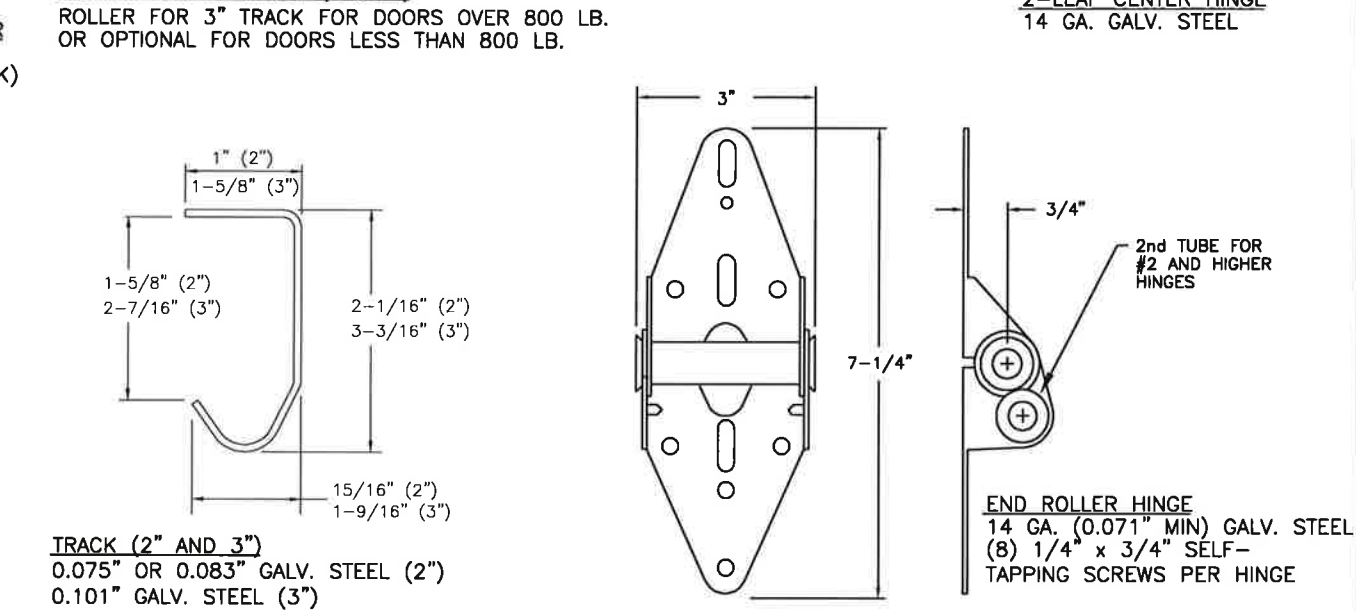
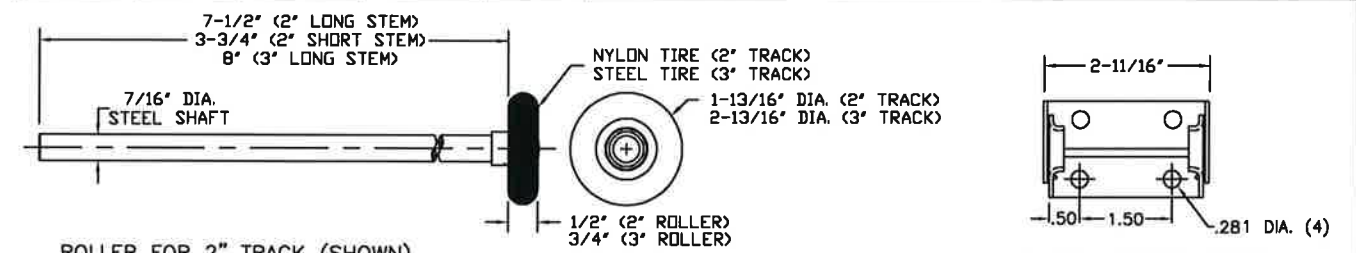
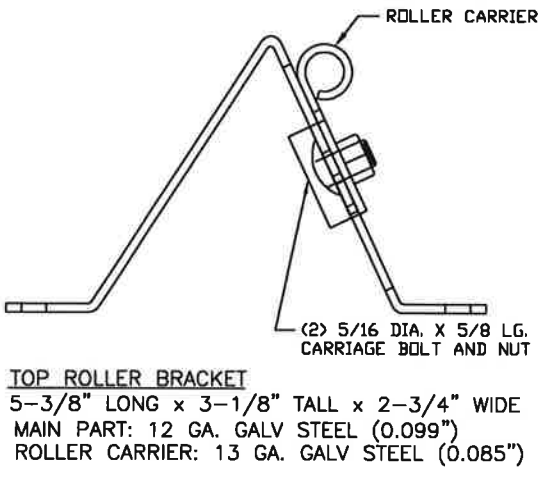
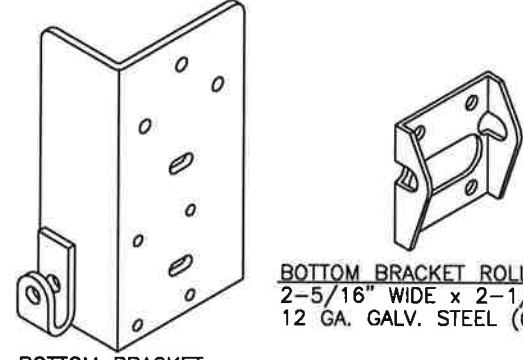
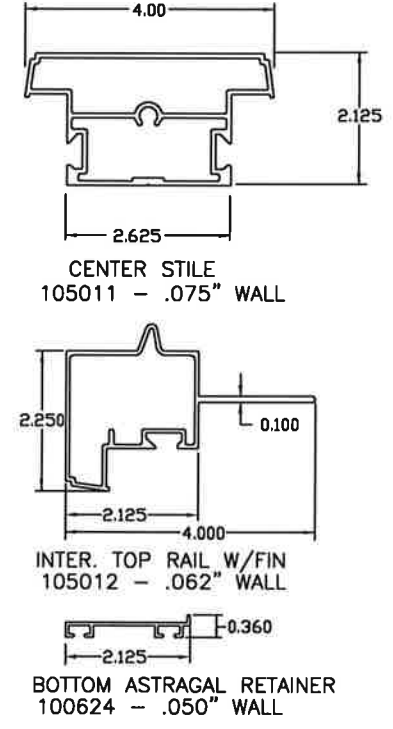
SHEET:
4 OF 4

REVISIONS					DESCRIPTION
REV. NO.	ZONE:	DATE:	ECN NO.	APPVD:	
---	---	---	---	---	SEE PAGE 1 FOR REVISION DETAILS

D
C
B
A



ALUMINUM PROFILES (6063-T5)



DESIGN ENGINEER:
MARK WESTERFIELD, P.E.
FLORIDA P.E. #48495, NC P.E. #23832, TEXAS P.E. #91513

Clopay CORPORATION	8585 Duke Boulevard Mason, OH 45040 USA Tel. No. 513-770-4800 Fax No. 513-770-4853	CLOPAY WINDLOAD RATING W8
DESCRIPTION: M/N 904 16' WIDE +46/-52 PSF		
DRAWN BY: JDW	DATE: 10/10/22	SCALE:
CHECKED BY: JDW	DATE: 10/10/22	SHEET 4 OF 4
DWG. NO.: 105609	VERSION: TDI	

4

3

2

1