

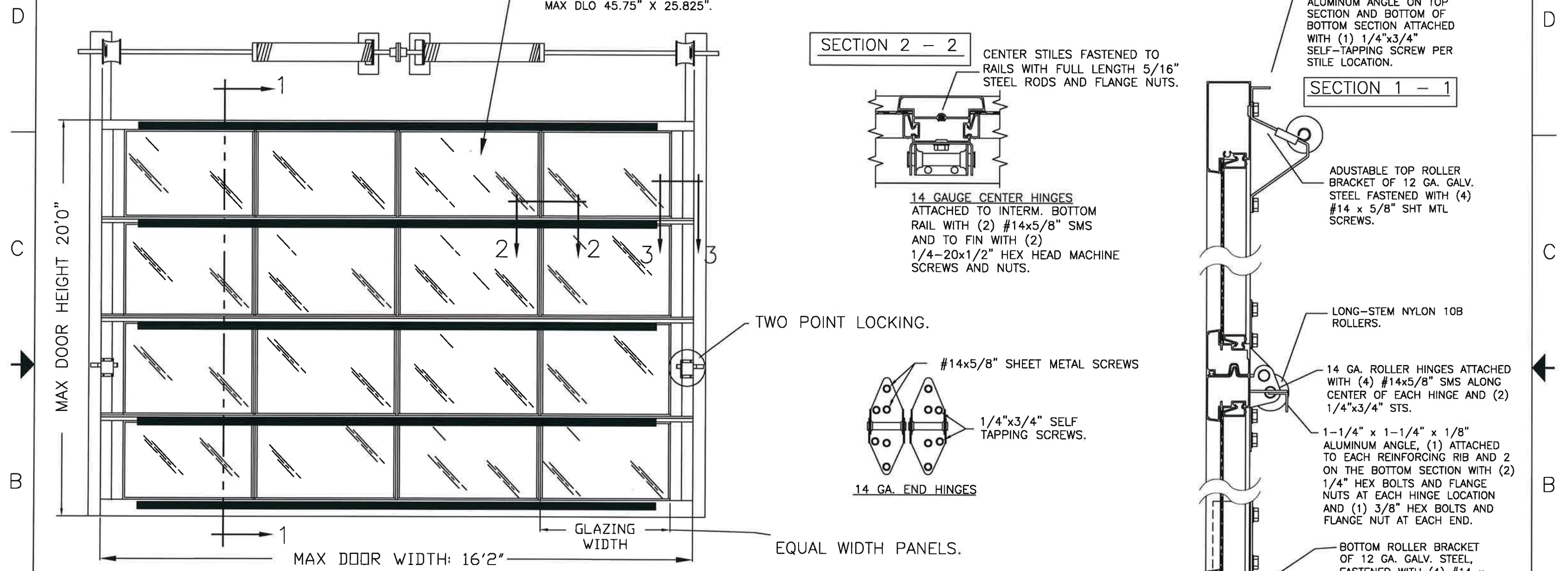
BRAND	MODEL
CLOPAY	904, 904U, AX, AXU
IDEAL	C4AL, C4ALU

THIS PRODUCT COMPLIES WITH THE 2018 IBC/IRC.

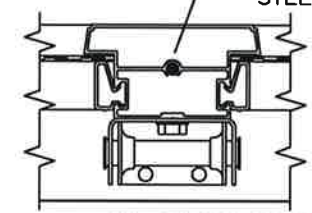
REVISIONS					
REV. NO.	ZONE:	DATE:	ECN NO.	APPVD:	DESCRIPTION
00	-	4/7/22	-	JDW	ISSUED FOR RELEASE

MADE FROM 6063-T5 ALUMINUM.

DSB LITES OR BETTER, ANNEALED OR TEMPERED.
INSULATED GLAZING SHALL CONSIST OF 2
ANNEALED OR TEMPERED DSB LITES.
MAX DLO 45.75" X 25.825".



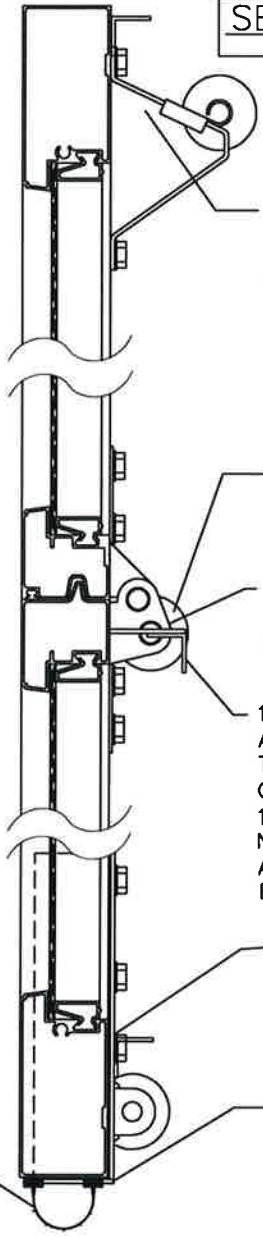
SECTION 2 - 2



CENTER STILES FASTENED TO RAILS WITH FULL LENGTH 5/16" STEEL RODS AND FLANGE NUTS.

14 GAUGE CENTER HINGES ATTACHED TO INTERM. BOTTOM RAIL WITH (2) #14x5/8" SMS AND TO FIN WITH (2) 1/4-20x1/2" HEX HEAD MACHINE SCREWS AND NUTS.

SECTION 1 - 1



1-1/4" x 1-1/4" x 1/8" ALUMINUM ANGLE ON TOP SECTION AND BOTTOM OF BOTTOM SECTION ATTACHED WITH (1) 1/4"x3/4" SELF-TAPPING SCREW PER STILE LOCATION.

ADJUSTABLE TOP ROLLER BRACKET OF 12 GA. GALV. STEEL FASTENED WITH (4) #14 x 5/8" SHT MTL SCREWS.

LONG-STEM NYLON 10B ROLLERS.

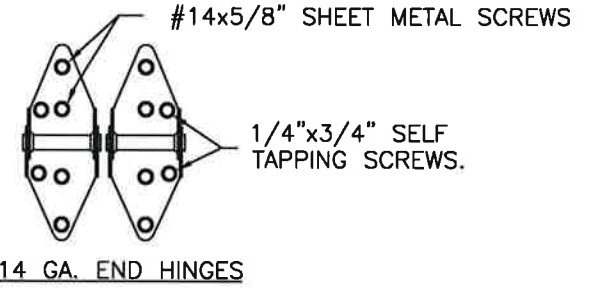
14 GA. ROLLER HINGES ATTACHED WITH (4) #14x5/8" SMS ALONG CENTER OF EACH HINGE AND (2) 1/4"x3/4" STS.

1-1/4" x 1-1/4" x 1/8" ALUMINUM ANGLE, (1) ATTACHED TO EACH REINFORCING RIB AND 2 ON THE BOTTOM SECTION WITH (2) 1/4" HEX BOLTS AND FLANGE NUTS AT EACH HINGE LOCATION AND (1) 3/8" HEX BOLTS AND FLANGE NUT AT EACH END.

BOTTOM ROLLER BRACKET OF 12 GA. GALV. STEEL, FASTENED WITH (4) #14 x 5/8" SHEET METAL SCREWS.

BOTTOM SECTION REINFORCED WITH A TEMPERED ALUMINUM EXTRUSION WITH INTEGRAL RETAINER FOR FLEXIBLE VINYL ASTRAGAL.

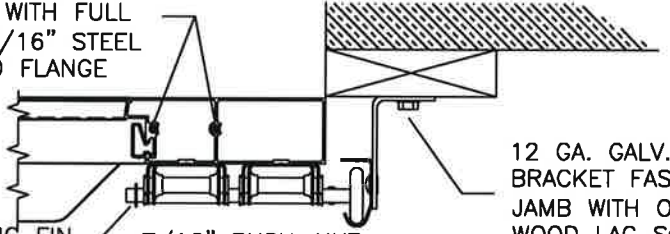
TWO POINT LOCKING.



14 GA. END HINGES

EQUAL WIDTH PANELS.

SECTION 3-3



SEE PAGE 2 FOR DIFFERENT JAMB CONFIGURATIONS

END STILES FASTENED TO RAILS WITH FULL LENGTH 5/16" STEEL RODS AND FLANGE NUTS.

REINFORCING FIN ON INTER. TOP RAILS ANGLE CUT AT END STILES.

12 GA. GALV. STEEL TRACK BRACKET FASTENED TO WOOD JAMB WITH ONE 5/16"x1-5/8" WOOD LAG SCREW PER BRACKET.

MANUFACTURING PRODUCT CODE
C-AL2-1F499

DESIGN PRESSURE: +25.0, -25.0 PSF
TEST PRESSURE: +37.5, -37.5 PSF

FLEXIBLE VINYL ASTRAGAL.

Mark Westerfield
4/21/22
STATE OF TEXAS
MARK W. WESTERFIELD
91513
PROFESSIONAL ENGINEER

DESIGN ENGINEER:
MARK WESTERFIELD, P.E.
FLORIDA P.E. #48495
NC P.E. #23832, TEXAS P.E. #91513

NOTICE: Confidential/Proprietary information of CLOPAY CORPORATION is contained herein and may not be disclosed, used, duplicated, made available, or distributed without its prior consent. Failure to observe this notice may result in liability for any damages and losses resulting therefrom.

Third Angle Projection

Unless Stated Otherwise TOLERANCES are
.0 = ±.031
.00 = ±.015
.000 = ±.005
.0000 = ±.001
Degrees = ±1/2'

Unless Stated Otherwise DIMENSIONS ARE IN INCHES.

PART NO.: -		CLOPAY WINDLOAD RATING	
		W4	
DESCRIPTION: M/N 904 16' WIDE DES. +25/-25 PSF			
DRAWN BY: J. WHEELER	DATE: 4/7/22	SCALE: NTS	DWG. B
CHECKED BY: SH	DATE: CHKD_DT	SHEET 1 OF 2	SIZE B
DWG. NO.: 105581		REV. NO. 00	

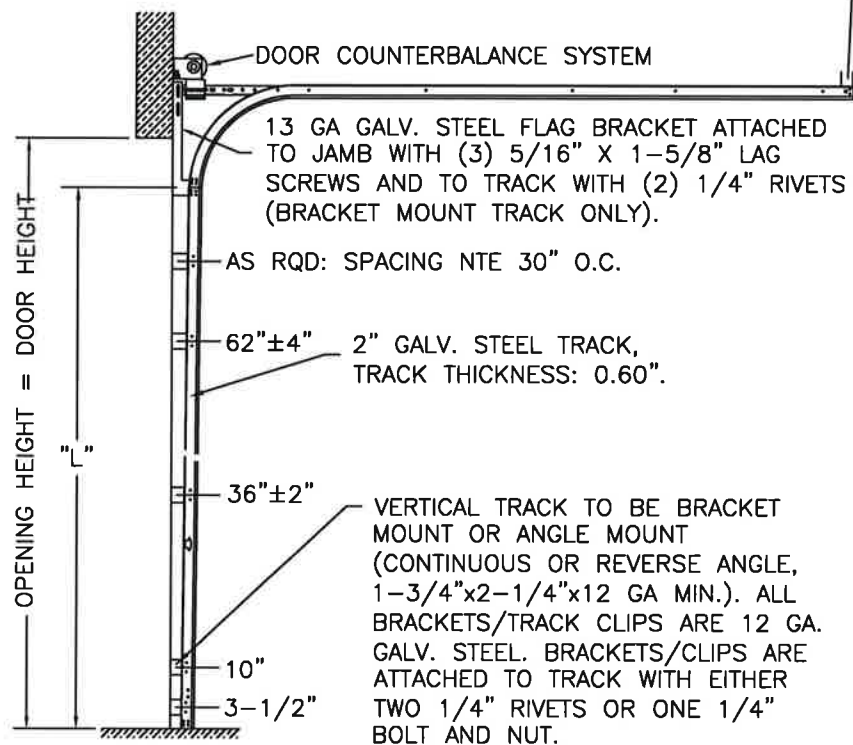
4

3

2

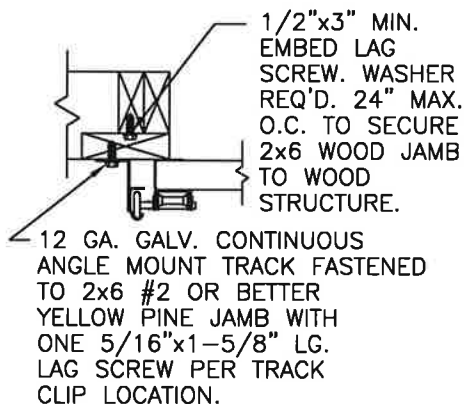
1

2" TRACK CONFIGURATION.



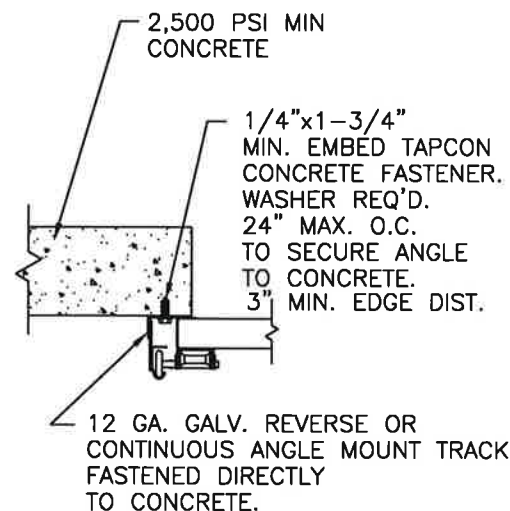
HORIZONTAL TRACK SUPPORT BY DOOR INSTALLER (TO SUIT).

WOOD JAMBS



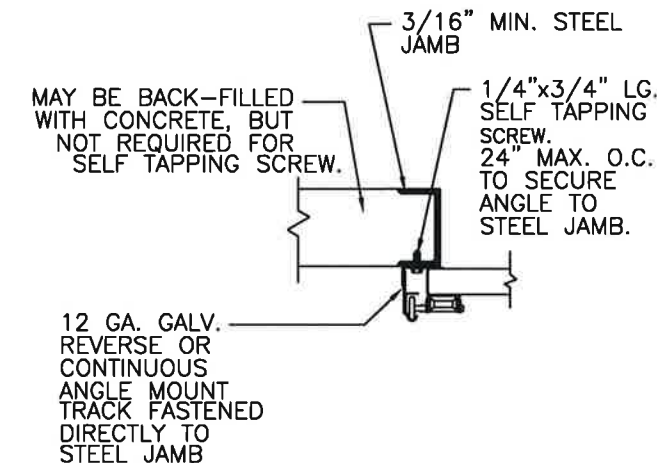
SECTION 3-3

CONCRETE JAMBS



SECTION 3-3

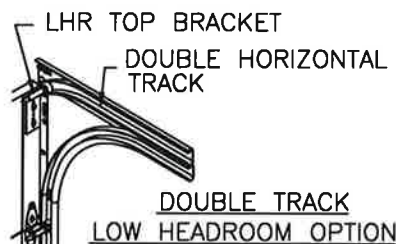
STEEL JAMBS



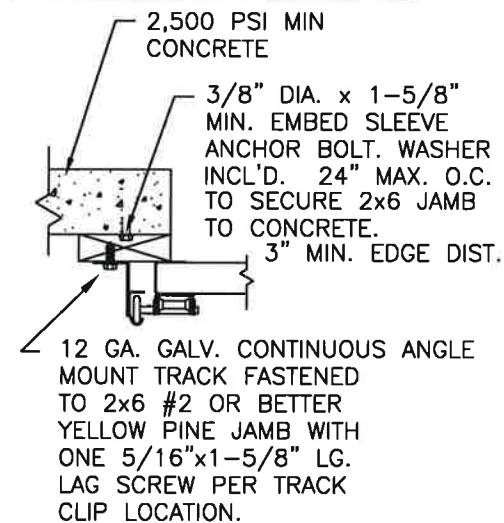
SECTION 3-3

DOOR HEIGHT	"L"
6'-6"	70"
7'-0"	76"
7'-6"	82"
8'-0"	88"
8'-6"	94"
9'-0"	100"
9'-6"	106"
10'-0"	112"
10'-6"	118"
11'-0"	124"
11'-6"	130"
12'-0"	136"
12'-6"	142"
13'-0"	148"
13'-6"	154"
14'-0"	160"
14'-6"	166"
15'-0"	172"
15'-6"	178"
16'-0"	184"
16'-6"	190"
17'-0"	196"
17'-6"	202"
18'-0"	208"
18'-6"	214"
19'-0"	220"
19'-6"	226"
20'-0"	232"

NOTE DOUBLE TRACK HEADROOM, HI-LIFT TRACK, FOLLOW-THE-ROOF TRACK, AND VERTICAL LIFT TRACK ARE AVAILABLE OPTIONS. TRACK CONFIGURATION ABOVE THE DOOR OPENING DOES NOT AFFECT THE WIND LOAD RATING.

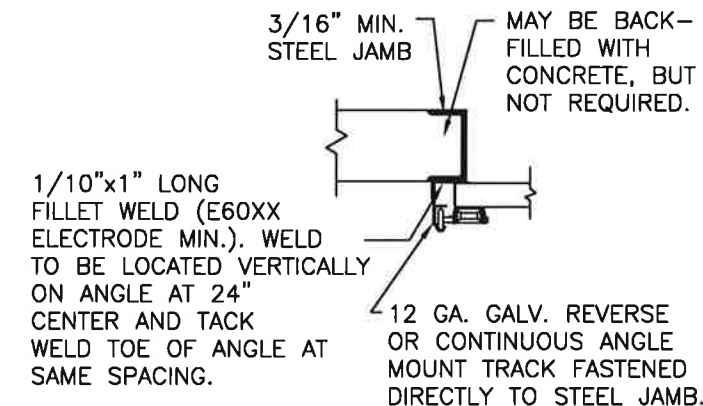


WOOD JAMB ON CONCRETE



SECTION 3-3

STEEL JAMBS



SECTION 3-3

Handwritten signature and date: 4/21/22

DESIGN ENGINEER: MARK WESTERFIELD, P.E. FLORIDA P.E. #48495 NC P.E. #23832, TEXAS P.E. #91513



<p>NOTICE: Confidential/Proprietary information of CLOPAY CORPORATION is contained herein and may not be disclosed, used, duplicated, made available, or distributed without its prior consent. Failure to observe this notice may result in liability for any damages and losses resulting therefrom.</p> <p>Third Angle Projection</p>	<p>Unless Stated Otherwise TOLERANCES are</p> <p>.0 = ±.031 .00 = ±.015 .000 = ±.005 .0000 = ±.001 Degrees = ±1/2'</p> <p>Unless Stated Otherwise DIMENSIONS ARE IN INCHES.</p>	<p>Clopay CORPORATION</p> <p>8585 Duke Boulevard Mason, OH 45040 USA Tel. No. 513-770-4800 Fax No. 513-770-4853</p>	PART NO.: -
			CLOPAY WINDLOAD RATING W4
DESCRIPTION: M/N 904 16' WIDE DES. +25/-25 PSF		DATE: 4/7/22	SCALE: NTS
DRAWN BY: J. WHEELER	CHECKED BY: SH	DATE: CHKD_DT	DWG. SIZE B
DWG. NO.: 105581		SHEET 2 OF 2	
REV. NO. 00			

4

3

2

1