

REVISIONS			
REV	DESCRIPTION	DATE	APPROVED
A	UPDATED COMPONENTS & DETAILS	08/15/18	R.L.
B	UPDATED PER NEW CODES	10/05/2021	R.L.

NOTES:

1. THE PRODUCT SHOWN HEREIN IS DESIGNED AND MANUFACTURED TO COMPLY WITH REQUIREMENTS OF THE 2018 IBC AND 2018 IRC.
2. WOOD FRAMING AND MASONRY OPENING TO BE DESIGNED AND ANCHORED TO PROPERLY TRANSFER ALL LOADS TO STRUCTURE. FRAMING AND MASONRY OPENING IS THE RESPONSIBILITY OF THE ARCHITECT OR ENGINEER OF RECORD.
3. 1X BUCK OVER MASONRY/CONCRETE IS OPTIONAL.
4. WHERE SHIM OR BUCK THICKNESS IS LESS THAN 1-1/2" WINDOW UNITS MUST BE ANCHORED THROUGH THE FRAME IN ACCORDANCE WITH MANUFACTURER'S PUBLISHED INSTALLATION INSTRUCTIONS. ANCHORS SHALL BE SECURELY FASTENED DIRECTLY INTO MASONRY, CONCRETE OR OTHER STRUCTURAL SUBSTRATE MATERIAL.
5. WHERE WOOD BUCK THICKNESS IS 1-1/2" OR GREATER, BUCK SHALL BE SECURELY FASTENED TO MASONRY, CONCRETE OR OTHER STRUCTURAL SUBSTRATE. WINDOW UNITS MAY BE ANCHORED THROUGH FRAME TO SECURED WOOD BUCK IN ACCORDANCE WITH MANUFACTURER'S PUBLISHED INSTALLATION INSTRUCTIONS.
6. WHERE 1X BUCK IS NOT USED DISSIMILAR MATERIALS MUST BE SEPARATED WITH APPROVED COATING OR MEMBRANE. SELECTION OF COATING OR MEMBRANE IS THE RESPONSIBILITY OF THE ARCHITECT OR ENGINEER OF RECORD.
7. BUCKS SHALL EXTEND BEYOND WINDOW INTERIOR FACE SO THAT FULL FRAME SUPPORT IS PROVIDED.
8. SHIM AS REQUIRED AT EACH ANCHOR LOCATION WITH LOAD BEARING SHIM. SHIM WHERE SPACE OF 1/16" OR GREATER OCCURS. MAXIMUM ALLOWABLE SHIM STACK TO BE 1/4".
9. SHIMS SHALL BE LOCATED, APPLIED AND MADE FROM MATERIALS AND THICKNESS CAPABLE OF SUSTAINING APPLICABLE LOADS.
10. WIND LOAD DURATION FACTOR Cd=1.6 WAS USED FOR WOOD ANCHOR CALCULATIONS.
11. FRAME MATERIAL: CO-EXTRUDED PVC FOAM.
12. UNITS MUST BE GLAZED WITH SAFETY GLASS PER ASTM E1300, WITH SAFETY GLAZING.
13. APPROVED IMPACT PROTECTIVE SYSTEM IS REQUIRED FOR THIS PRODUCT IN WIND BORNE DEBRIS REGIONS.

14. FOR ANCHORING INTO WOOD FRAMING OR 2X BUCK USE #10 WOOD SCREWS WITH SUFFICIENT LENGTH TO ACHIEVE A 1 1/4" MINIMUM EMBEDMENT INTO SUBSTRATE. LOCATE ANCHORS AS SHOWN IN ELEVATIONS AND INSTALLATION DETAILS.
15. FOR ANCHORING INTO MASONRY/CONCRETE USE 1/4" TAPCONS WITH SUFFICIENT LENGTH TO ACHIEVE A 1 3/4" MINIMUM EMBEDMENT INTO SUBSTRATE WITH 2" MINIMUM EDGE DISTANCE. LOCATE ANCHORS AS SHOWN IN ELEVATIONS AND INSTALLATION DETAILS.
16. FOR ANCHORING INTO METAL STRUCTURE USE #10 SMS OR SELF DRILLING SCREWS WITH SUFFICIENT LENGTH TO ACHIEVE 3 THREADS MINIMUM BEYOND STRUCTURE INTERIOR WALL. LOCATE ANCHORS AS SHOWN IN ELEVATIONS AND INSTALLATION DETAILS.
17. ALL FASTENERS TO BE CORROSION RESISTANT.
18. INSTALLATION ANCHORS SHALL BE INSTALLED IN ACCORDANCE WITH ANCHOR MANUFACTURER'S INSTALLATION INSTRUCTIONS AND ANCHORS SHALL NOT BE USED IN SUBSTRATES WITH STRENGTHS LESS THAN THE MINIMUM STRENGTH SPECIFIED BELOW:
 - A. WOOD – MINIMUM SPECIFIC GRAVITY OF G=0.42
 - B. CONCRETE – MINIMUM COMPRESSIVE STRENGTH OF 2,000 PSI.
 - C. MASONRY – GROUT FILLED BLOCK PER ASTM C90 WITH Fm=2,000PSI MINIMUM.
 - D. METAL STRUCTURE: STEEL 18GA, 33KSI OR ALUMINUM 6063-T5 1/8" THICK MINIMUM
19. APPROVED CONFIGURATIONS: X, OX, XO, X/O, O/X, XX, OXX, XXO, O/XX, XX/O, OXO, O/XO, OX/O, O/XXO, OXX/O AND OXXO, SEE SHEET 3.
20. SIDELITES ARE ASSEMBLED TO FRAME WITH #10X2 1/2" WOOD SCREWS LOCATED 4" FROM EACH END AND 26 7/8" MAX O.C. THEREAFTER AT JAMBS AND 4" FROM EACH END AND ONE AT MIDSPAN AT HEAD AND SILL.

TABLE OF CONTENTS	
SHEET NO.	DESCRIPTION
1	NOTES
2	ELEVATION
3	ADDITIONAL APPROVED CONFIGURATIONS
4 – 5	ANCHORING LAYOUTS
6 – 14	INSTALLATION DETAILS
15	COMPONENTS

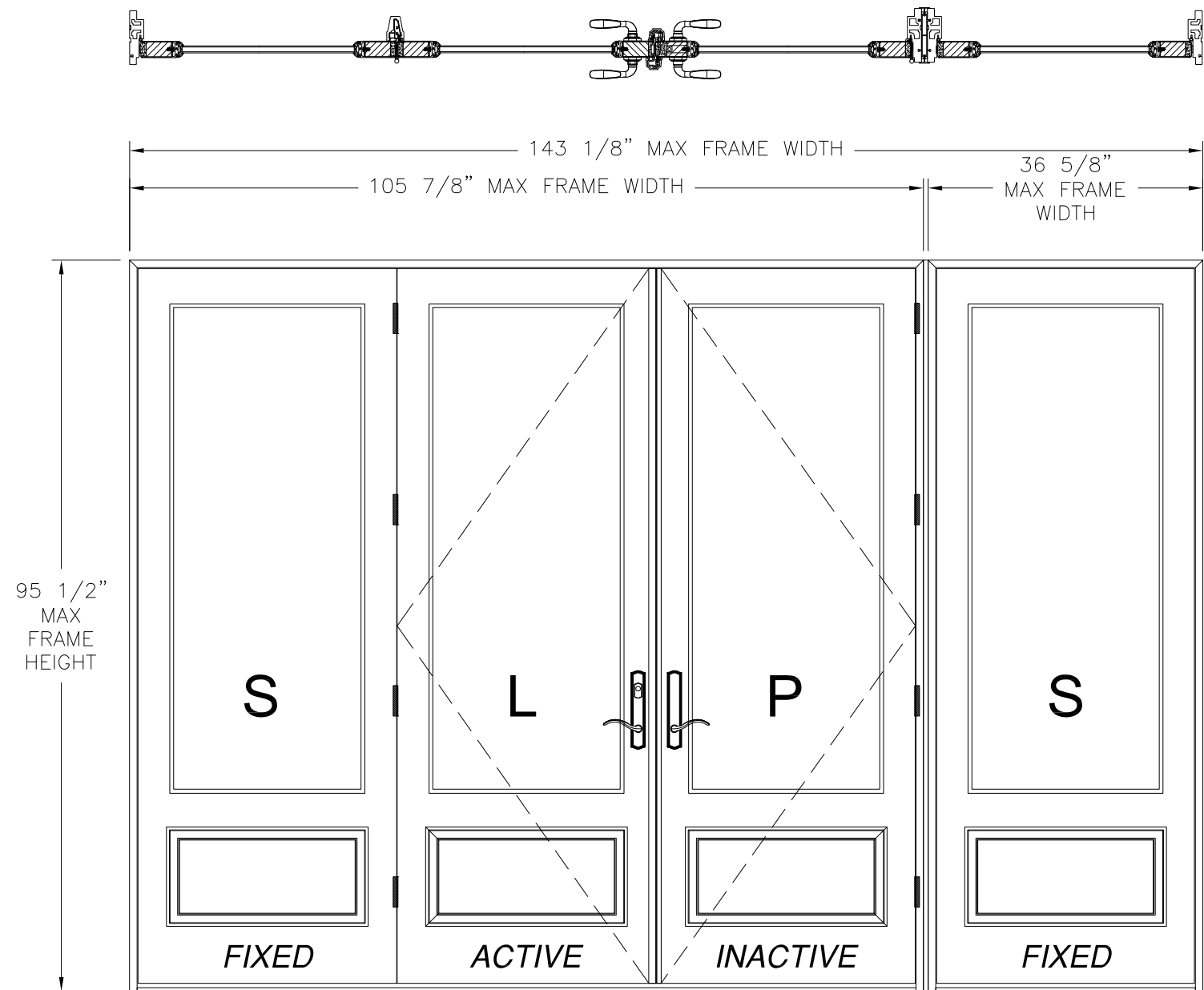
NAN YA PLASTICS CORP. USA 8989 NORTH LOOP EAST HOUSTON, TX 77029		
SERIES SLPS OUTSWING 3/4 LITE FIBERGLASS PATIO DOOR NON-IMPACT NOTES		
DRAWN: N.G.	DWG NO. 08-02502	REV B
SCALE NTS	DATE 10/20/14	SHEET 1 OF 15
L. ROBERTO LOMAS P.E. 1432 WOODFORD RD LEWISVILLE, NC 27023 434-688-0609 rllomas@rlomaspe.com		

SIGNED: 10/05/2021



Luis R. Lomas P.E.
TX No.: 101889

REVISIONS			
REV	DESCRIPTION	DATE	APPROVED
A	UPDATED COMPONENTS & DETAILS	08/15/18	R.L.
B	UPDATED PER NEW CODES	10/05/2021	R.L.



NOTES:

- PANEL SIZE: 34 1/2" X 93 5/16"
- D.L.O.: 25 1/4" X 63 1/4"

SERIES SLPS 12080 OS
3/4 LITE FIBERGLASS PATIO DOOR
 EXTERIOR VIEW

DESIGN PRESSURE RATING	IMPACT RATING
±50.0PSF	NONE

HARDWARE SCHEDULE

A.	(4) STEEL 4X4 BUTT HINGE BY WENZHOU LONGTAI (PER PANEL), AT 5 3/4", 31 1/4", 56 3/4" & 82 1/4" FROM FRAME HEAD
B.	STAINLESS STEEL MULTI-POINT (3) LOCKING SYSTEM WITH KEEPERS, 8 3/8", 51 3/4" AND 90 1/8" FROM FRAME HEAD AT ACTIVE AND PASSIVE PANEL
C.	STAINLESS STEEL TOP/BOTTOM DRIVE BAR SYSTEM WITH KEEPERS AT ACTIVE PANEL
D.	DIE CAST HANDLE SETS AT ACTIVE AND PASSIVE PANELS
E.	1/8" STEEL REINFORCEMENT AT ACTIVE, PASSIVE, FIXED AND STATIONARY PANEL STILES
F.	ALUMINUM REINFORCEMENT-A AT ASTRAGAL

SIGNED: 10/05/2021

NAN YA PLASTICS CORP. USA
 8989 NORTH LOOP EAST
 HOUSTON, TX 77029

SERIES SLPS OUTSWING 3/4 LITE FIBERGLASS
 PATIO DOOR NON-IMPACT
 ELEVATION

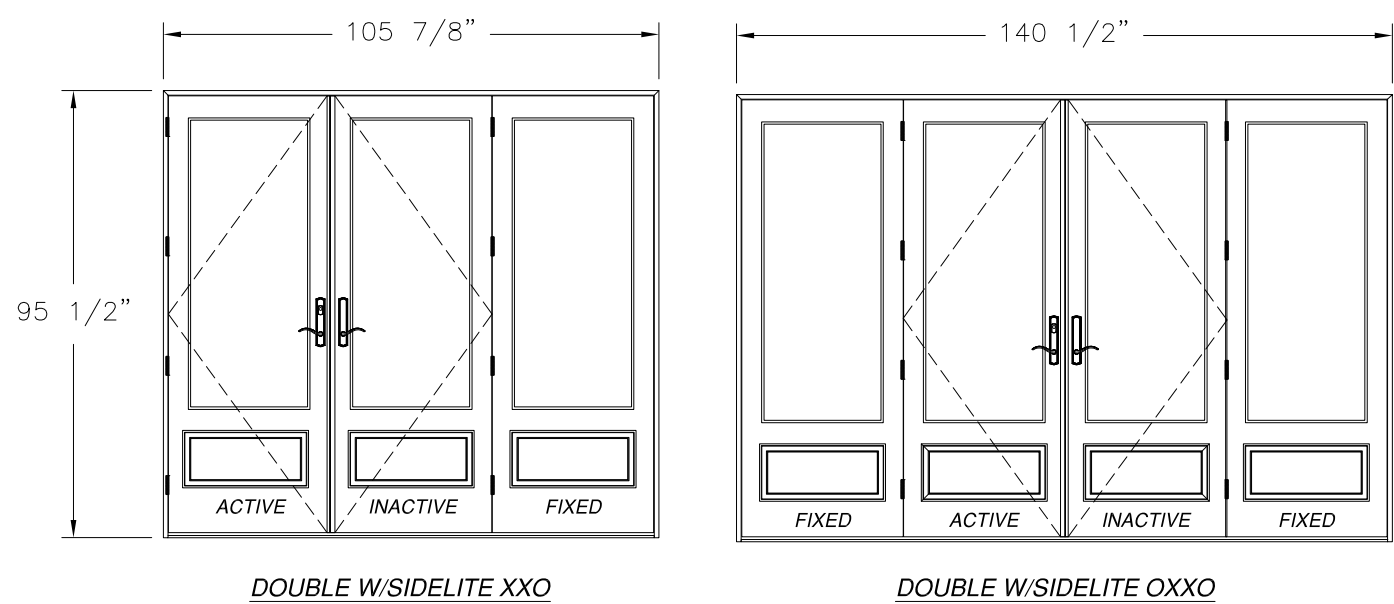
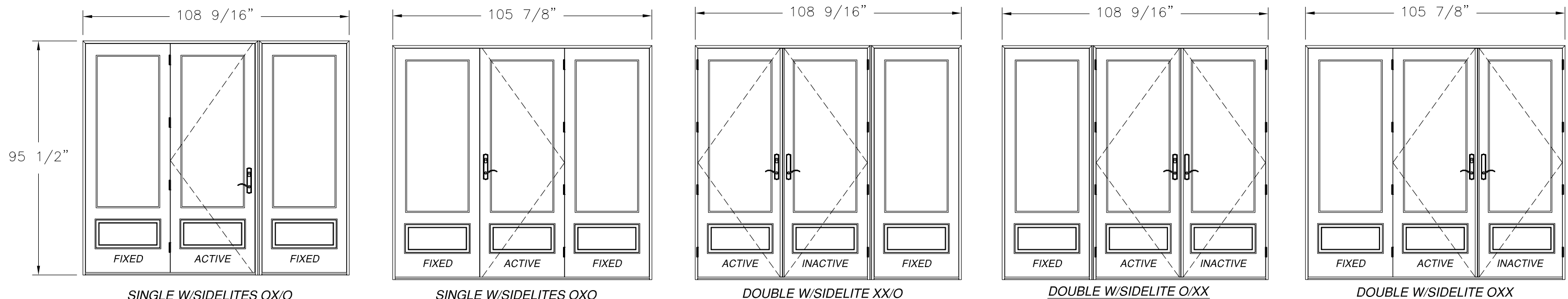
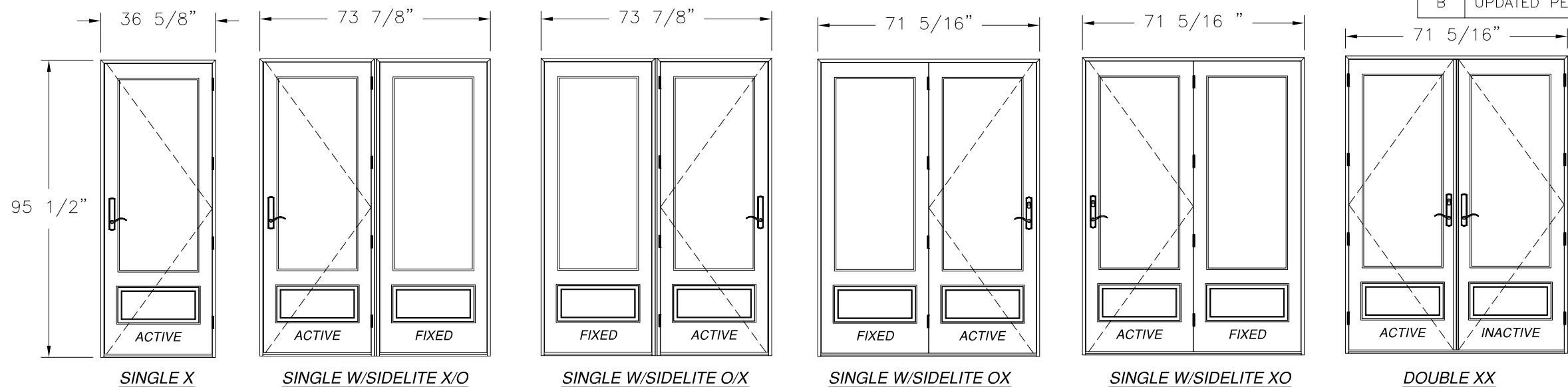
DRAWN: N.G.	DWG NO. 08-02502	REV B
SCALE NTS	DATE 10/20/14	SHEET 2 OF 15

L. ROBERTO LOMAS P.E.
 1432 WOODFORD RD LEWISVILLE, NC 27023
 434-688-0609 rllomas@rlomaspe.com



Luis R. Lomas P.E.
 TX No.: 101889

REVISIONS			
REV	DESCRIPTION	DATE	APPROVED
A	UPDATED COMPONENTS & DETAILS	08/15/18	R.L.
B	UPDATED PER NEW CODES	10/05/2021	R.L.



NAN YA PLASTICS CORP. USA
 8989 NORTH LOOP EAST
 HOUSTON, TX 77029

SERIES SLPS OUTSWING 3/4 LITE FIBERGLASS
 PATIO DOOR NON-IMPACT
 ADDITIONAL APPROVED CONFIGURATIONS

DRAWN: N.G.	DWG NO. 08-02502	REV B
SCALE NTS	DATE 10/20/14	SHEET 3 OF 15

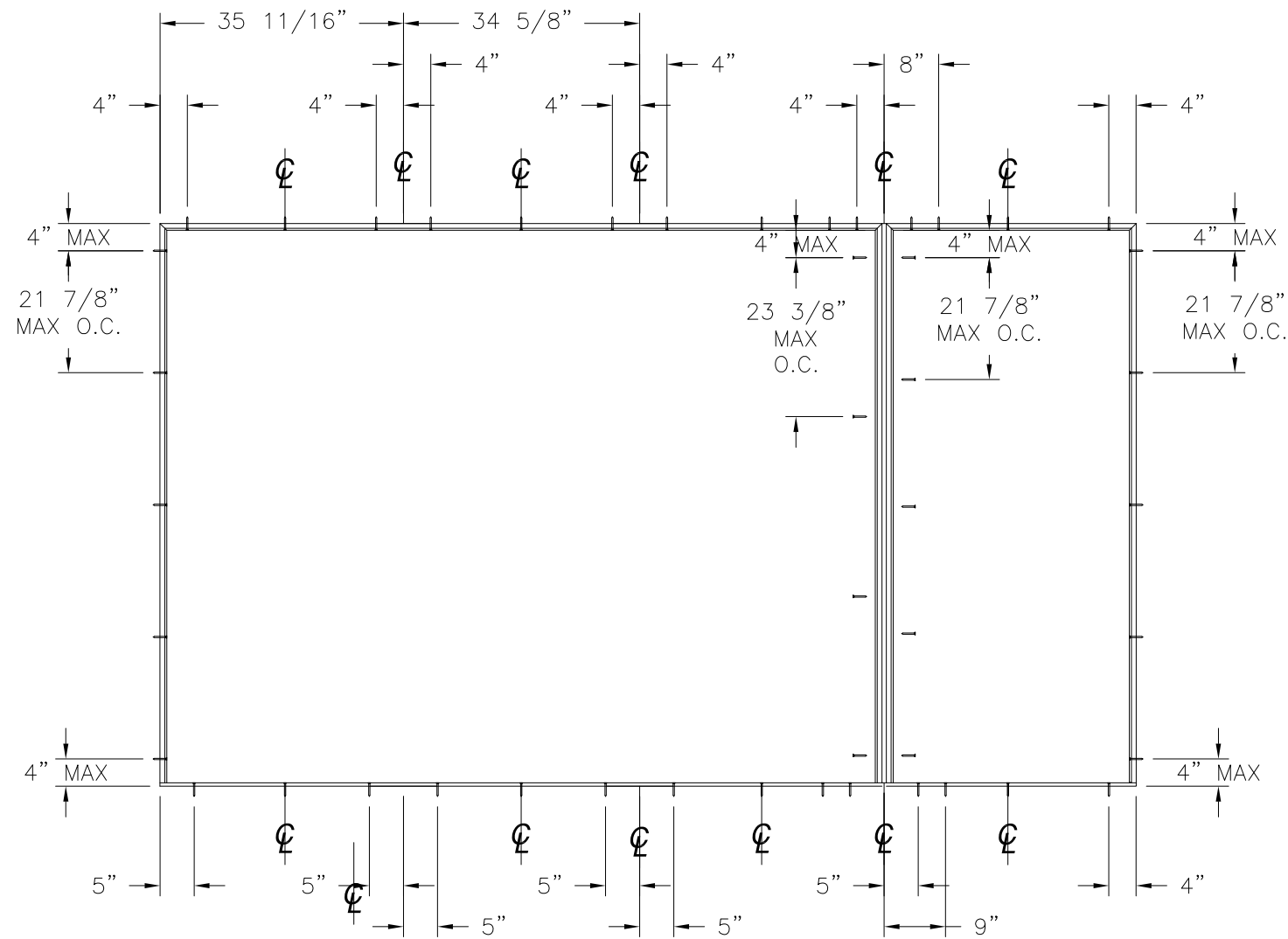
L. ROBERTO LOMAS P.E.
 1432 WOODFORD RD LEWISVILLE, NC 27023
 434-688-0609 rllomas@rlomaspe.com

SIGNED: 10/05/2021

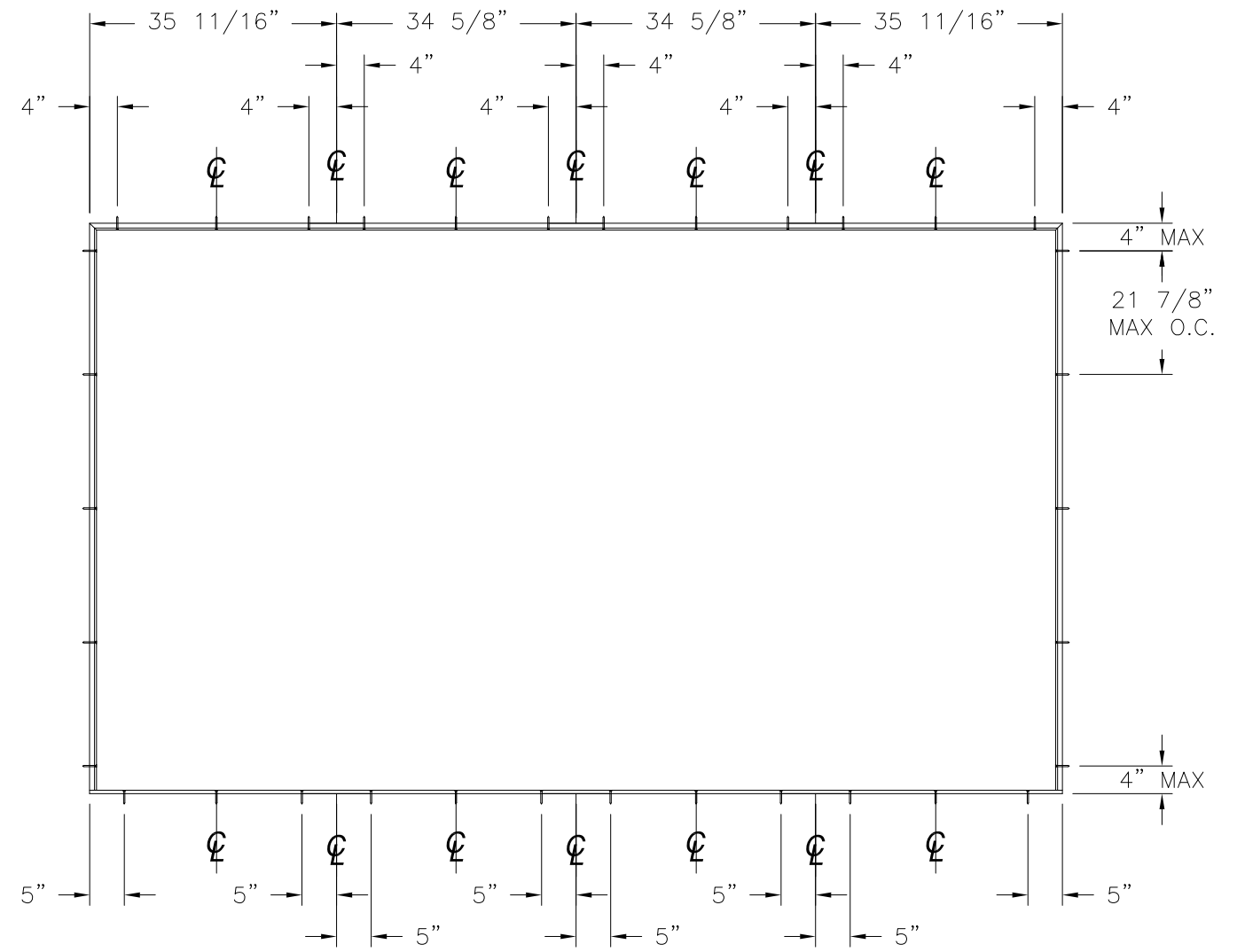


Luis R. Lomas P.E.
 TX No.: 101889

REVISIONS			
REV	DESCRIPTION	DATE	APPROVED
A	UPDATED COMPONENTS & DETAILS	08/15/18	R.L.
B	UPDATED PER NEW CODES	10/05/2021	R.L.



ANCHORING LAYOUT FOR O/XXO, OXX/O



ANCHORING LAYOUT FOR OXXO

SIGNED: 10/05/2021

NAN YA PLASTICS CORP. USA
 8989 NORTH LOOP EAST
 HOUSTON, TX 77029

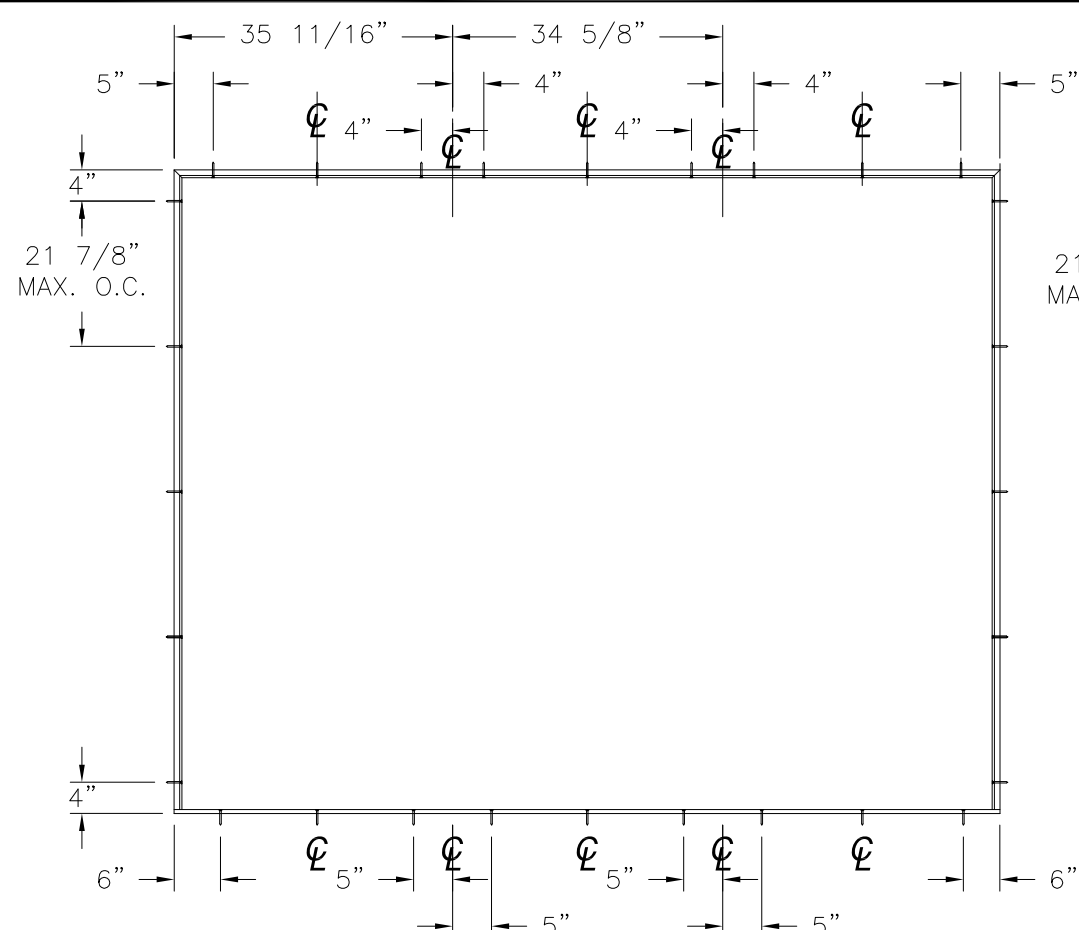
SERIES SLPS OUTSWING 3/4 LITE FIBERGLASS
 PATIO DOOR NON-IMPACT
 ANCHORING LAYOUTS

DRAWN: N.G.	DWG NO. 08-02502	REV B
SCALE NTS	DATE 10/20/14	SHEET 4 OF 15

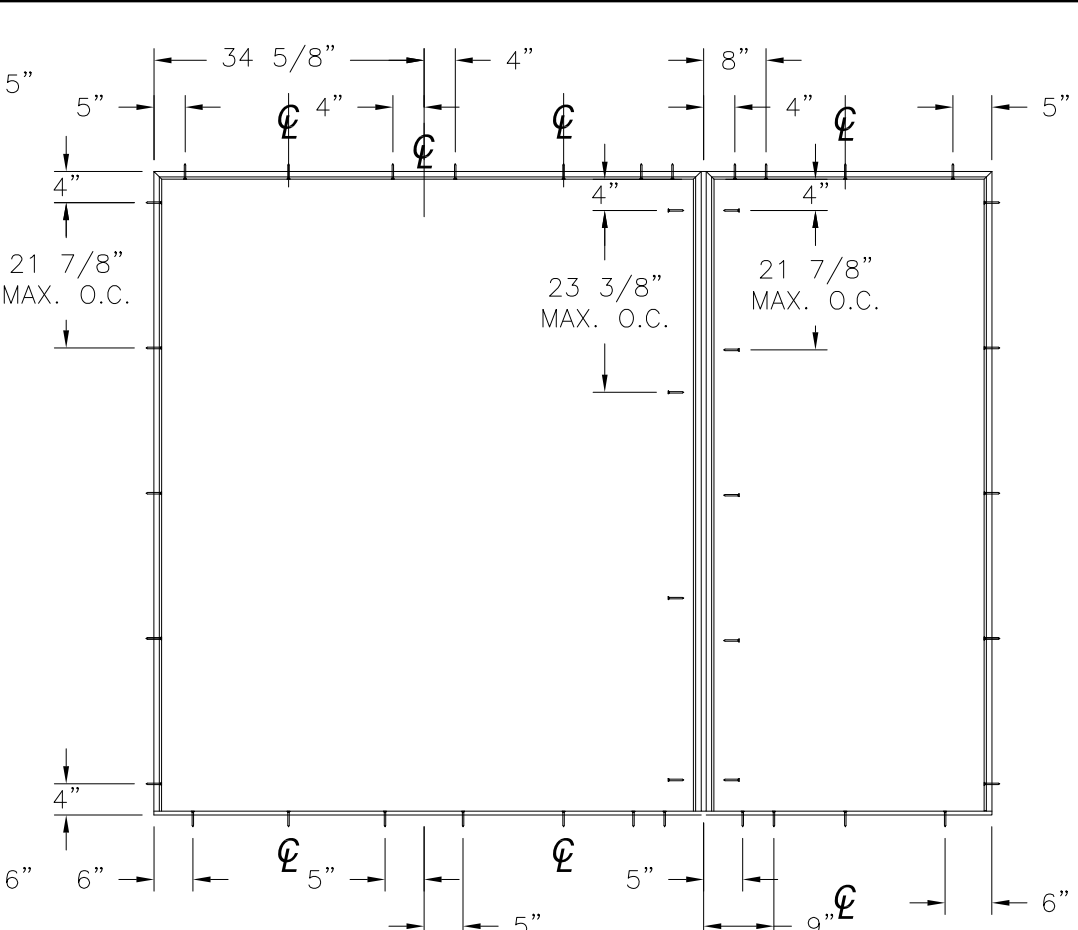
L. ROBERTO LOMAS P.E.
 1432 WOODFORD RD LEWISVILLE, NC 27023
 434-688-0609 rllomas@rlomaspe.com



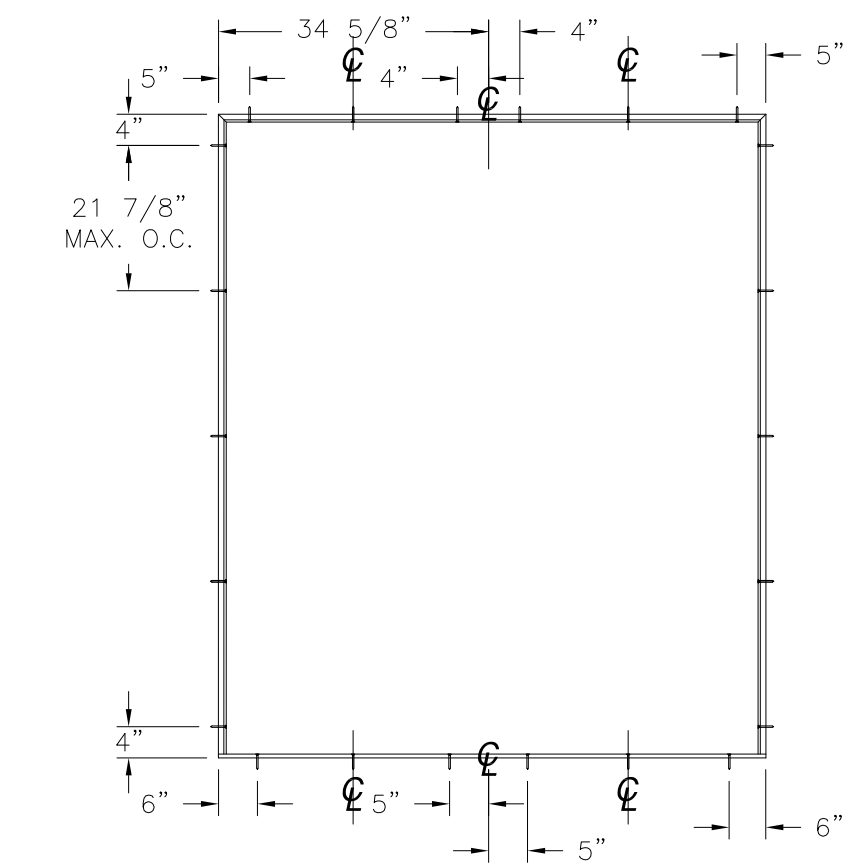
Luis R. Lomas P.E.
 TX No.: 101889



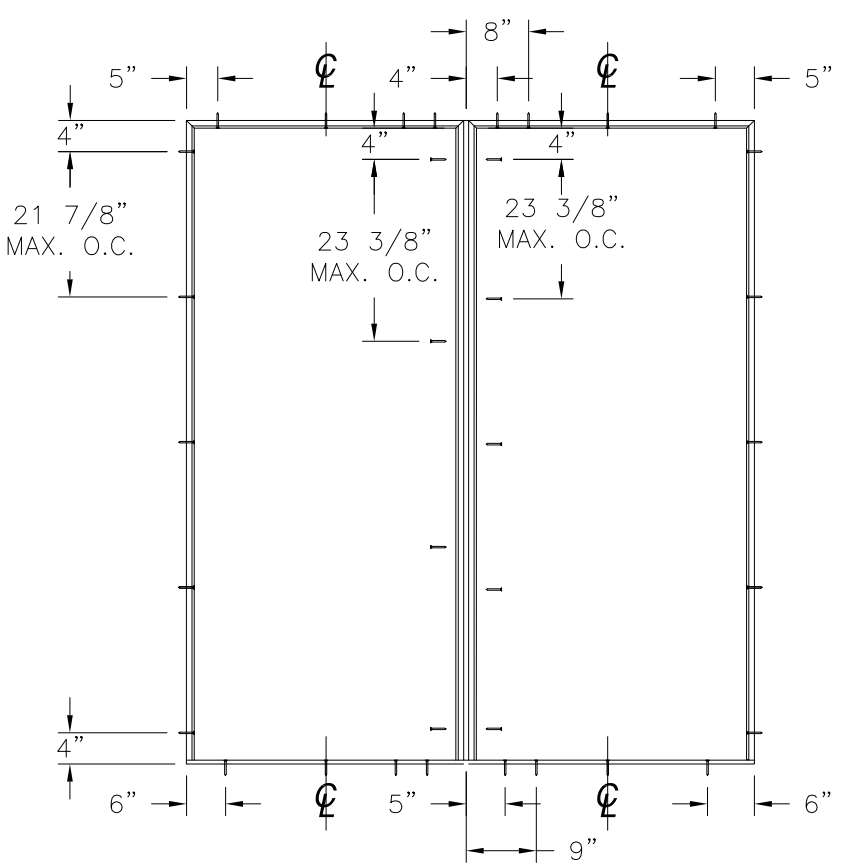
ANCHORING LAYOUT FOR OXO, XXO AND OXX



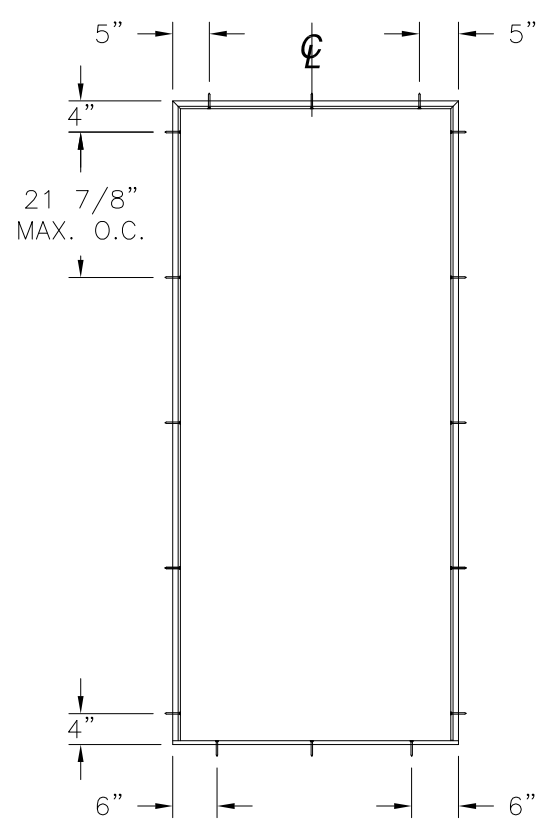
ANCHORING LAYOUT FOR OX/O, O/XO, XX/O AND O/XX



ANCHORING LAYOUT FOR XX, OX AND XO



ANCHORING LAYOUT FOR O/X AND X/O



ANCHORING LAYOUT FOR X

REVISIONS			
REV	DESCRIPTION	DATE	APPROVED
A	UPDATED COMPONENTS & DETAILS	08/15/18	R.L.
B	UPDATED PER NEW CODES	10/05/2021	R.L.

NAN YA PLASTICS CORP. USA
 8989 NORTH LOOP EAST
 HOUSTON, TX 77029

SERIES SLPS OUTSWING 3/4 LITE FIBERGLASS
 PATIO DOOR NON-IMPACT
 ANCHORING LAYOUTS

DRAWN: N.G.	DWG NO. 08-02502	REV B
SCALE NTS	DATE 10/20/14	SHEET 5 OF 15

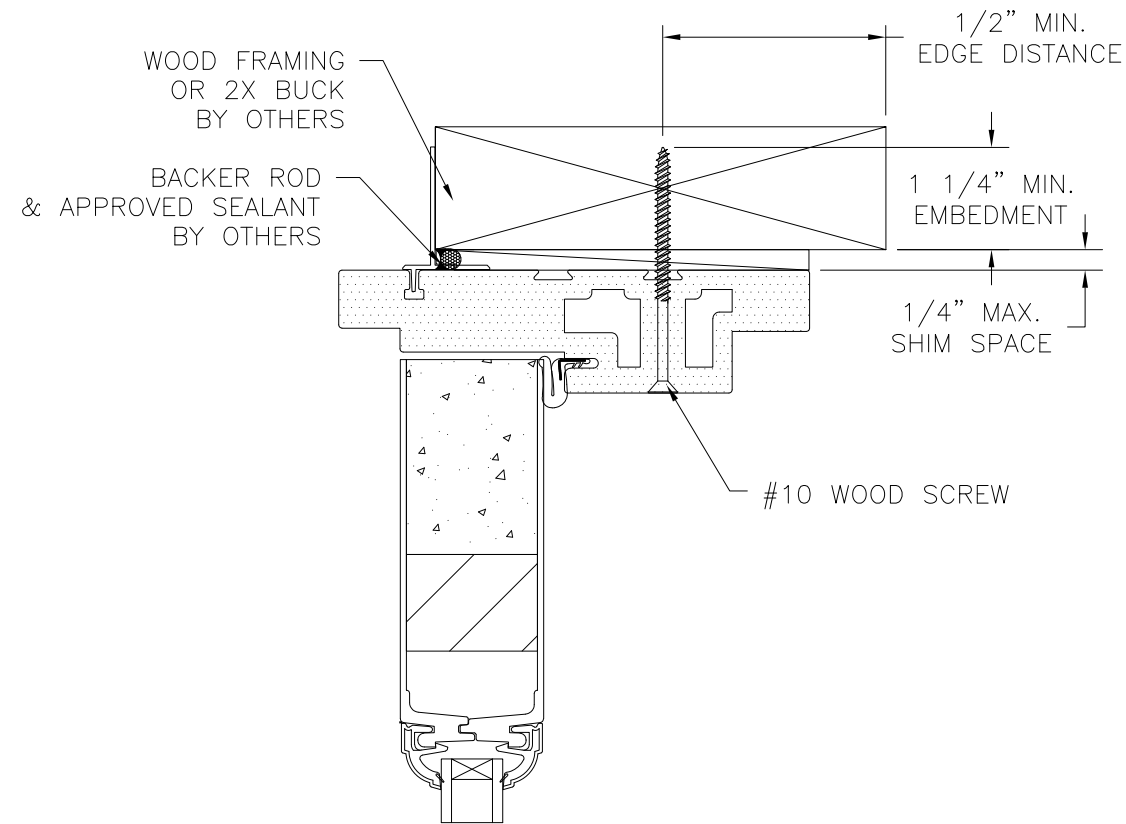
L. ROBERTO LOMAS P.E.
 1432 WOODFORD RD LEWISVILLE, NC 27023
 434-688-0609 rllomas@lrlomaspe.com

SIGNED: 10/05/2021



Luis R. Lomas P.E.
 TX No.: 101889

REVISIONS			
REV	DESCRIPTION	DATE	APPROVED
A	UPDATED COMPONENTS & DETAILS	08/15/18	R.L.
B	UPDATED PER NEW CODES	10/05/2021	R.L.

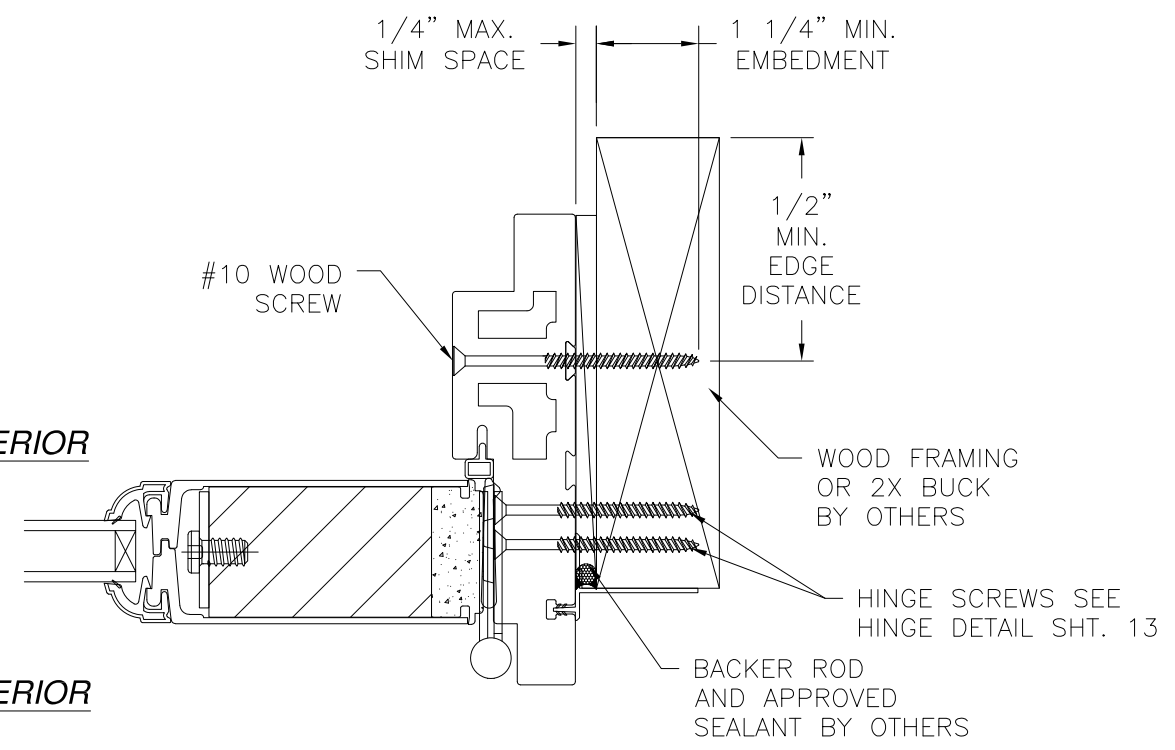


EXTERIOR

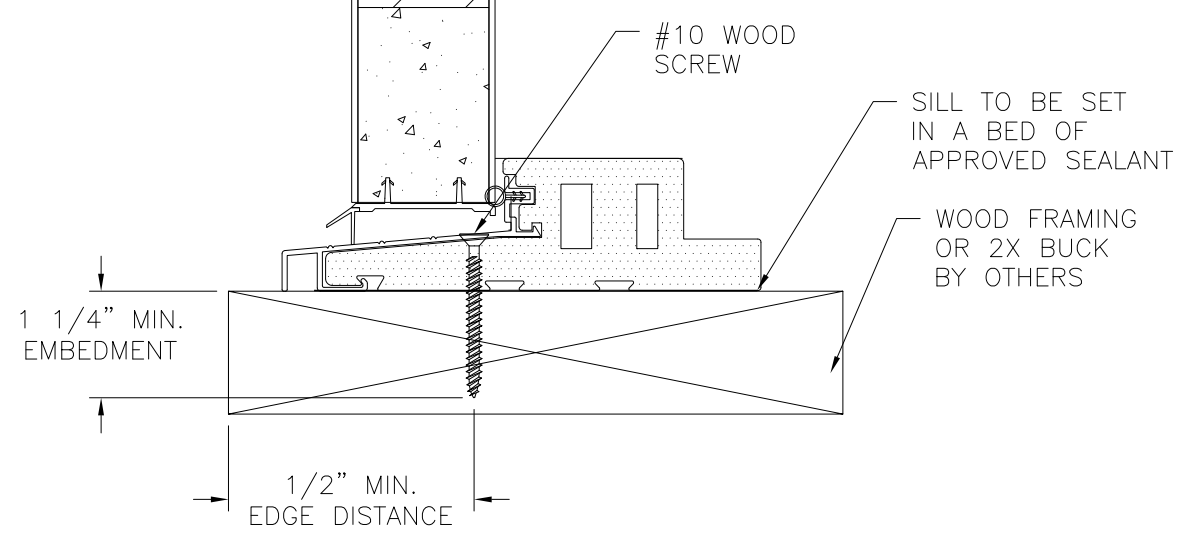
INTERIOR

INTERIOR

EXTERIOR



DOOR INSTALLATION DETAILS
2X BUCK/WOOD FRAMING INSTALLATION



DOOR INSTALLATION DETAILS
2X BUCK/WOOD FRAMING INSTALLATION

- NOTES:**
1. INTERIOR AND EXTERIOR FINISHES, BY OTHERS, NOT SHOWN FOR CLARITY.
 2. PERIMETER AND JOINT SEALANT BY OTHERS TO BE DESIGNED IN ACCORDANCE WITH ASTM E2112

SIGNED: 10/05/2021

NAN YA PLASTICS CORP. USA
8989 NORTH LOOP EAST
HOUSTON, TX 77029

SERIES SLPS OUTSWING 3/4 LITE FIBERGLASS
PATIO DOOR NON-IMPACT
DOOR INSTALLATION DETAILS

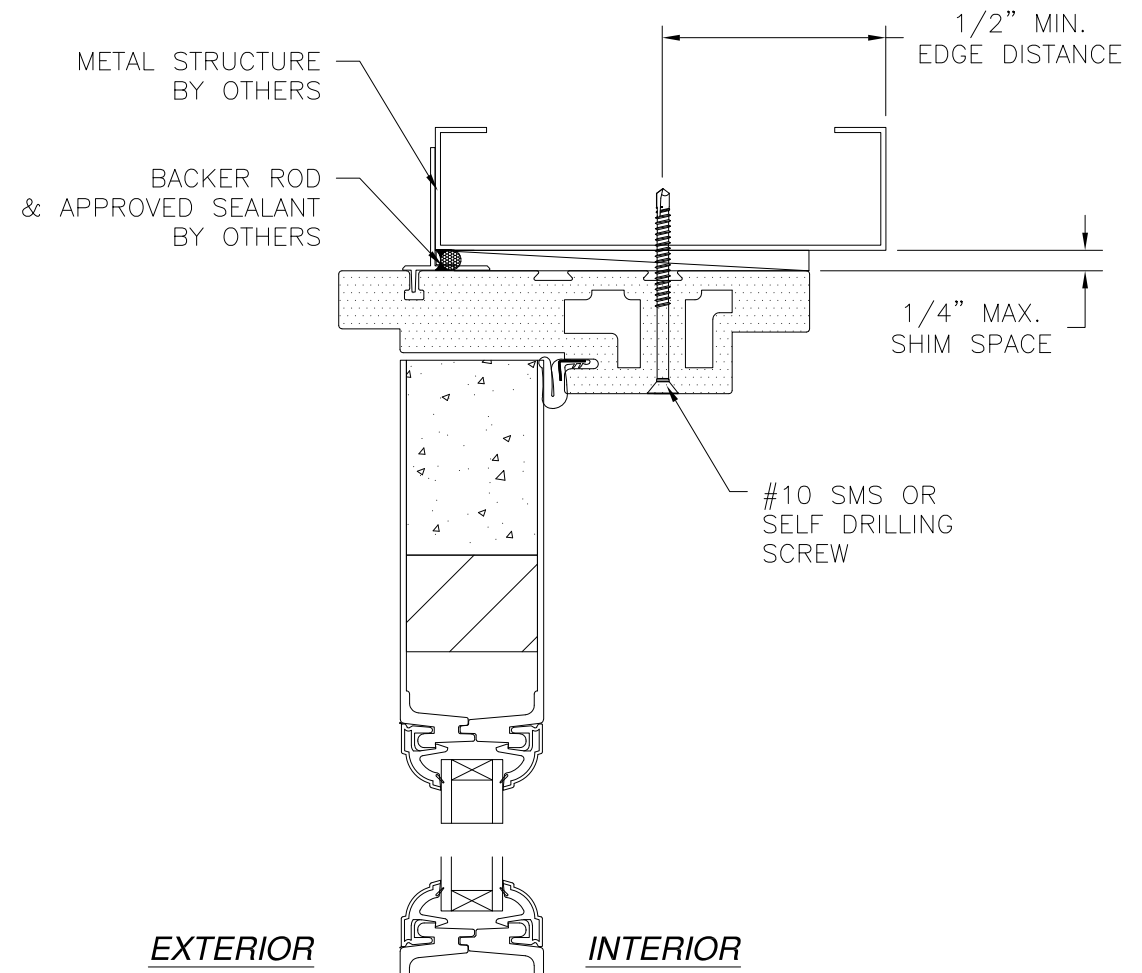
DRAWN: N.G.	DWG NO. 08-02502	REV B
SCALE NTS	DATE 10/20/14	SHEET 6 OF 15

L. ROBERTO LOMAS P.E.
1432 WOODFORD RD LEWISVILLE, NC 27023
434-688-0609 rllomas@rlomaspe.com

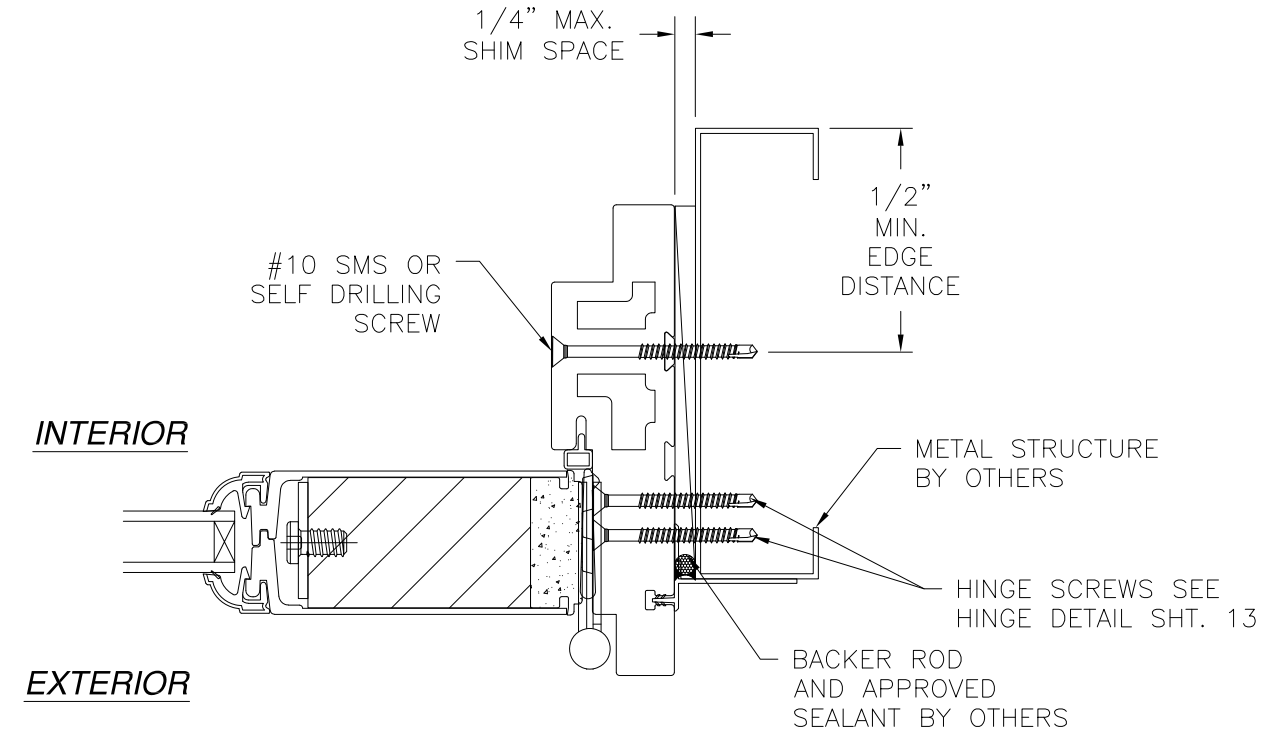


Luis R. Lomas P.E.
TX No.: 101889

REVISIONS			
REV	DESCRIPTION	DATE	APPROVED
A	UPDATED COMPONENTS & DETAILS	08/15/18	R.L.
B	UPDATED PER NEW CODES	10/05/2021	R.L.



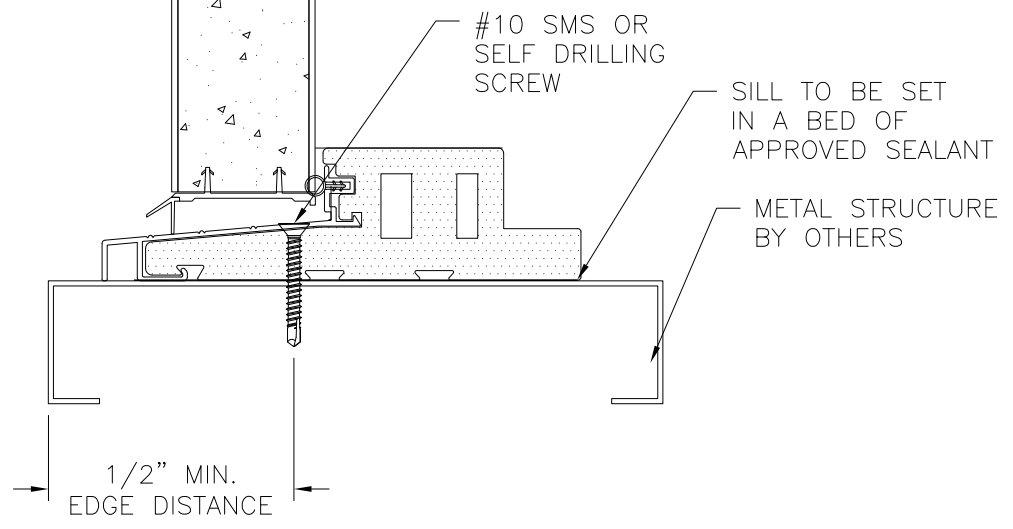
EXTERIOR **INTERIOR**



INTERIOR

EXTERIOR

DOOR INSTALLATION DETAILS
METAL STRUCTURE INSTALLATION



DOOR INSTALLATION DETAILS
METAL STRUCTURE INSTALLATION

- NOTES:**
1. **INTERIOR AND EXTERIOR FINISHES, BY OTHERS, NOT SHOWN FOR CLARITY.**
 2. **PERIMETER AND JOINT SEALANT BY OTHERS TO BE DESIGNED IN ACCORDANCE WITH ASTM E2112**

SIGNED: 10/05/2021

NAN YA PLASTICS CORP. USA
8989 NORTH LOOP EAST
HOUSTON, TX 77029

SERIES SLPS OUTSWING 3/4 LITE FIBERGLASS
PATIO DOOR NON-IMPACT
DOOR INSTALLATION DETAILS

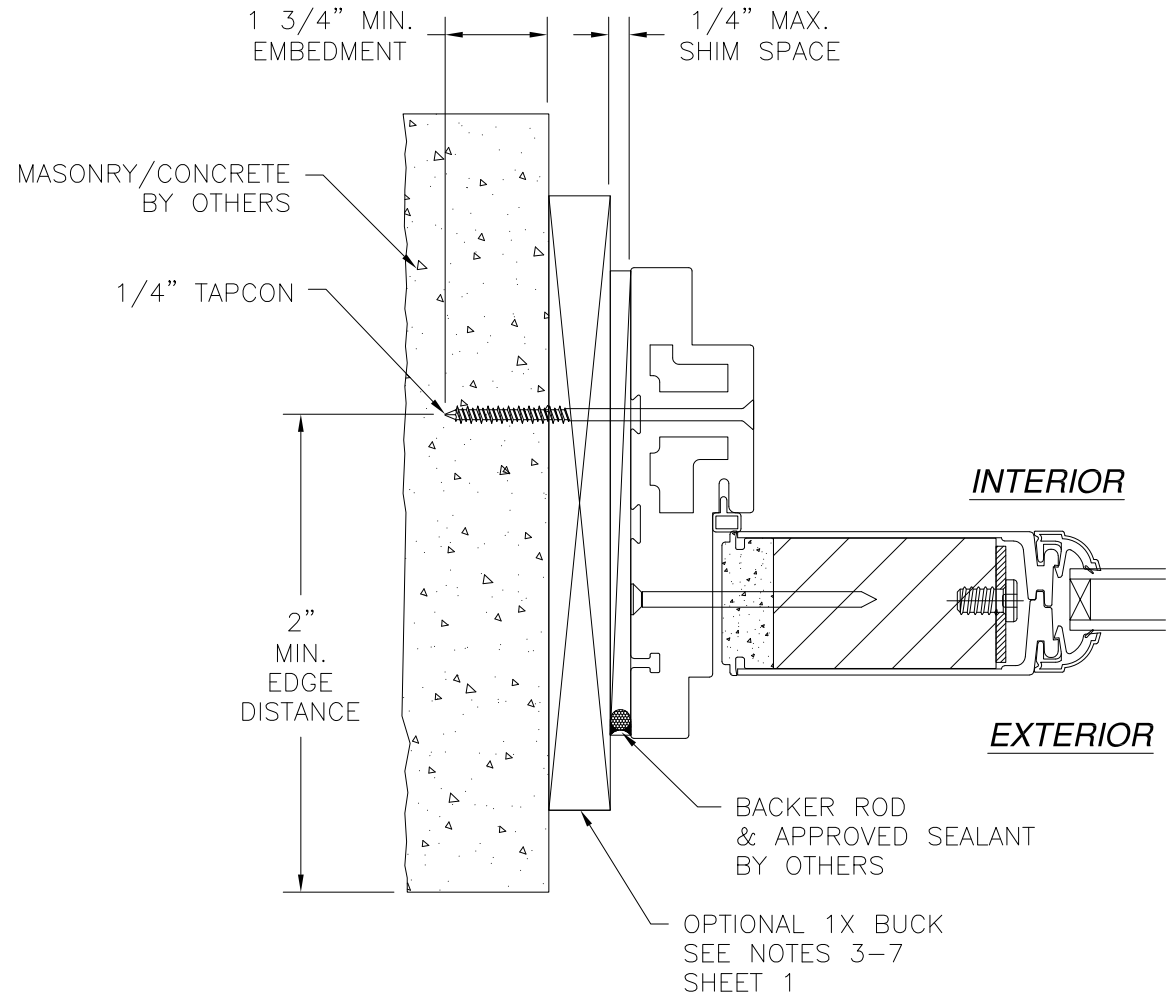
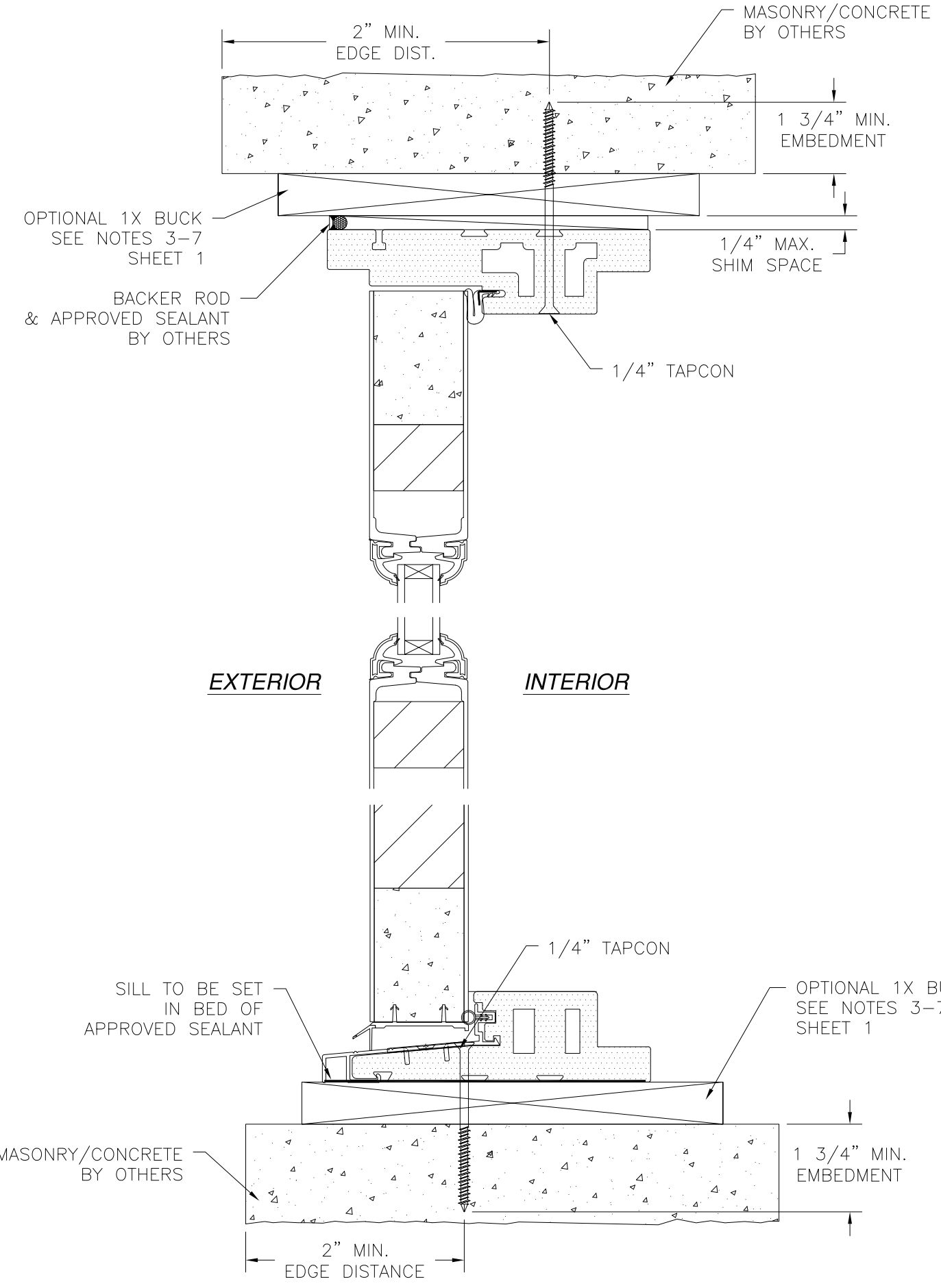
DRAWN: N.G.	DWG NO. 08-02502	REV B
SCALE NTS	DATE 10/20/14	SHEET 7 OF 15

L. ROBERTO LOMAS P.E.
1432 WOODFORD RD LEWISVILLE, NC 27023
434-688-0609 rllomas@rlomaspe.com



Luis R. Lomas P.E.
TX No.: 101889

REVISIONS			
REV	DESCRIPTION	DATE	APPROVED
A	UPDATED COMPONENTS & DETAILS	08/15/18	R.L.
B	UPDATED PER NEW CODES	10/05/2021	R.L.



DOOR INSTALLATION DETAILS
MASONRY/CONCRETE INSTALLATION

- NOTES:**
1. *INTERIOR AND EXTERIOR FINISHES, BY OTHERS, NOT SHOWN FOR CLARITY.*
 2. *PERIMETER AND JOINT SEALANT BY OTHERS TO BE DESIGNED IN ACCORDANCE WITH ASTM E2112*

SIGNED: 10/05/2021

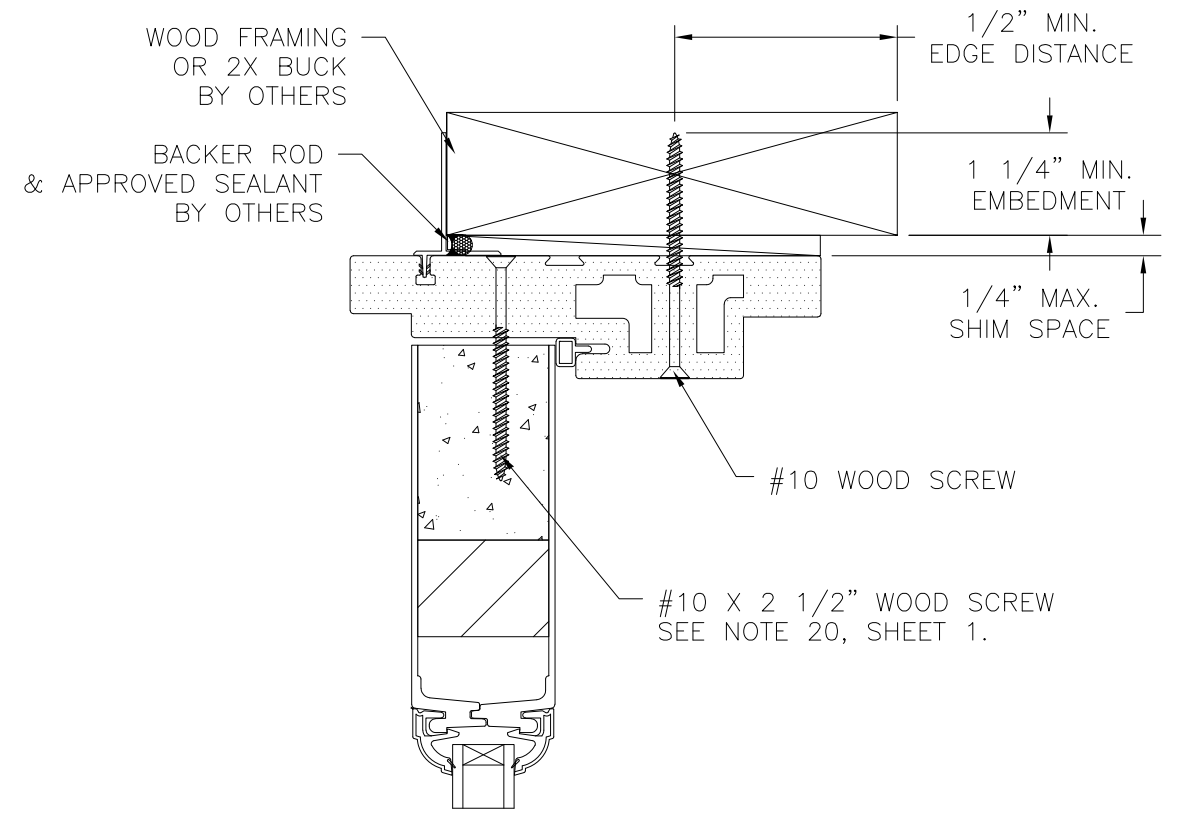
<p>NAN YA PLASTICS CORP. USA 8989 NORTH LOOP EAST HOUSTON, TX 77029</p>		
<p>SERIES SLPS OUTSWING 3/4 LITE FIBERGLASS PATIO DOOR NON-IMPACT DOOR INSTALLATION DETAILS</p>		
DRAWN: N.G.	DWG NO. 08-02502	REV B
SCALE NTS	DATE 10/20/14	SHEET 8 OF 15
<p>L. ROBERTO LOMAS P.E. 1432 WOODFORD RD LEWISVILLE, NC 27023 434-688-0609 rllomas@rlomaspe.com</p>		



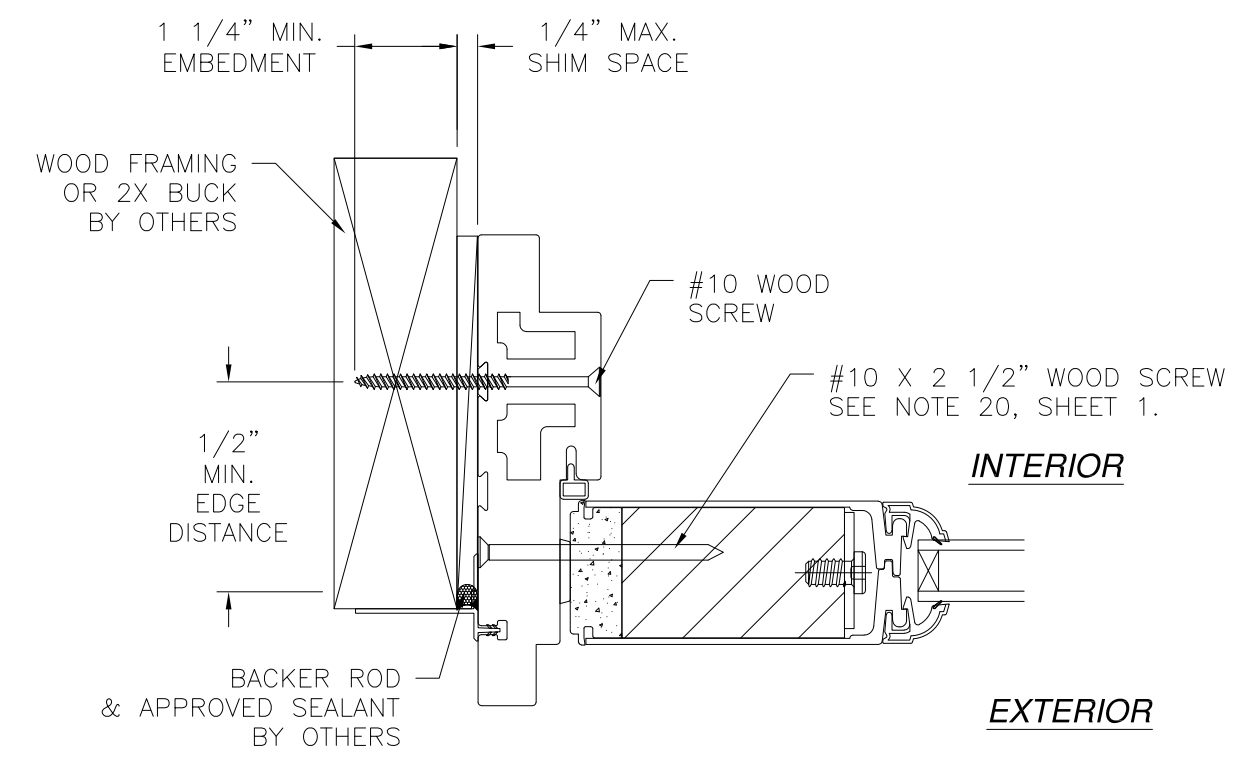
Luis R. Lomas P.E.
TX No.: 101889

DOOR INSTALLATION DETAILS
MASONRY/CONCRETE INSTALLATION

REVISIONS			
REV	DESCRIPTION	DATE	APPROVED
A	UPDATED COMPONENTS & DETAILS	08/15/18	R.L.
B	UPDATED PER NEW CODES	10/05/2021	R.L.



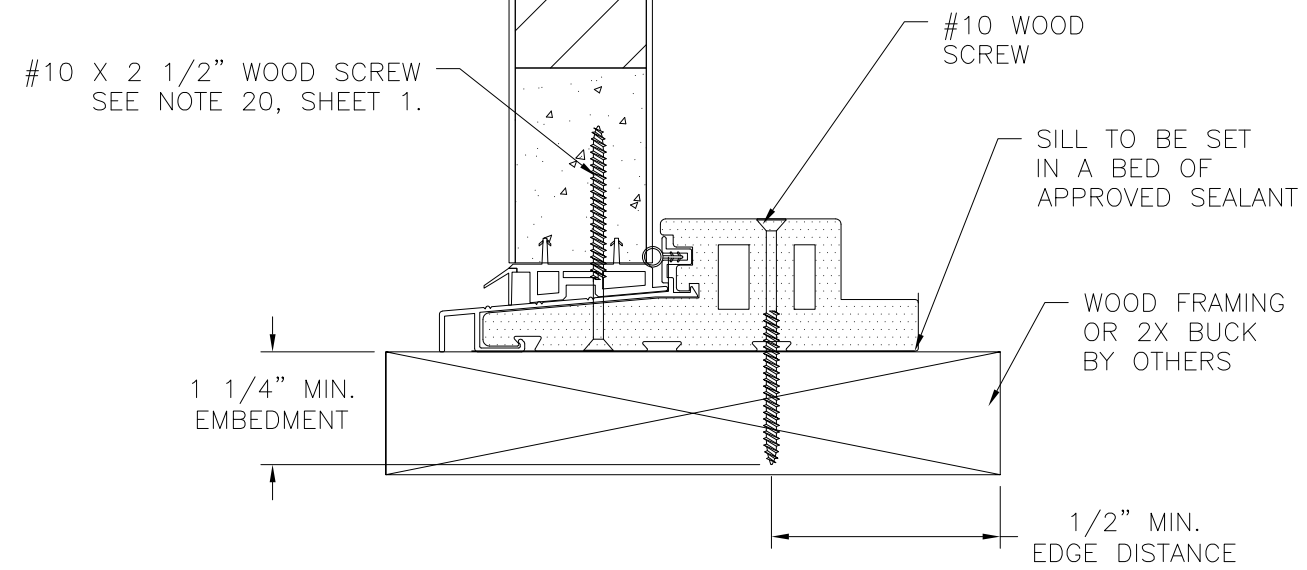
EXTERIOR INTERIOR



INTERIOR

EXTERIOR

SIDELITE INSTALLATION DETAILS
2X BUCK/WOOD FRAMING INSTALLATION



SIDELITE INSTALLATION DETAILS
2X BUCK/WOOD FRAMING INSTALLATION

- NOTES:**
1. INTERIOR AND EXTERIOR FINISHES, BY OTHERS, NOT SHOWN FOR CLARITY.
 2. PERIMETER AND JOINT SEALANT BY OTHERS TO BE DESIGNED IN ACCORDANCE WITH ASTM E2112

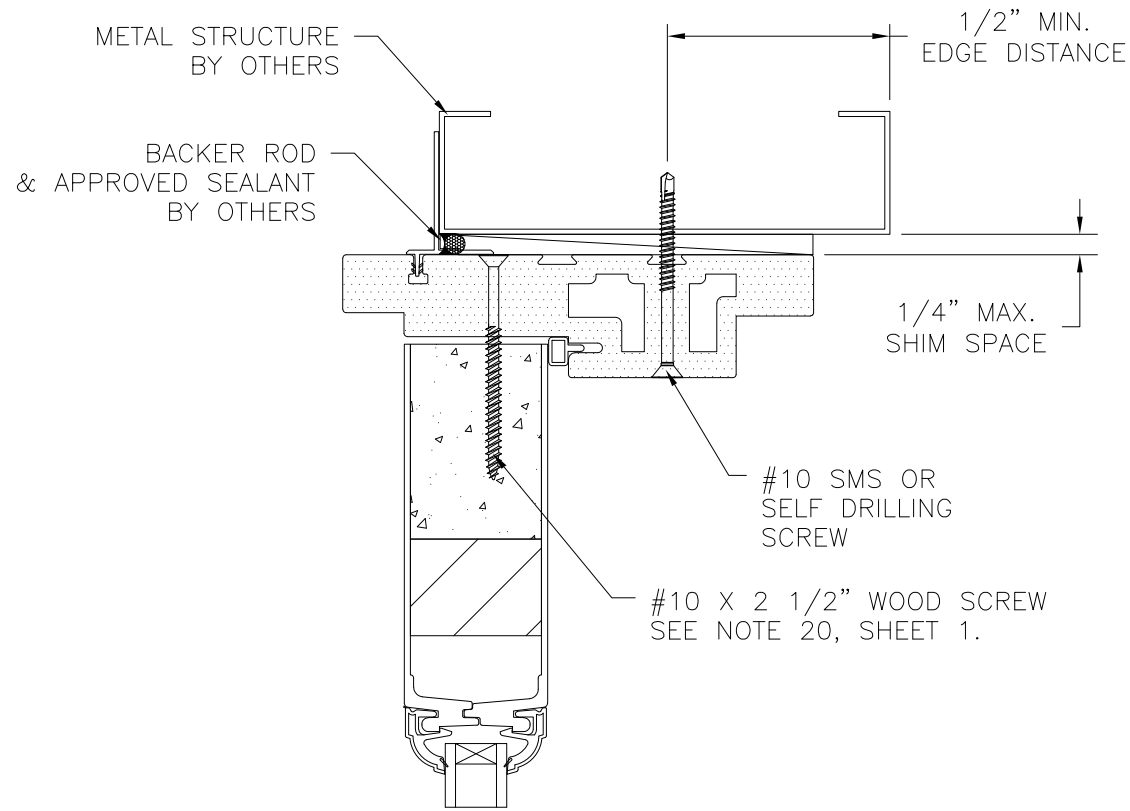
SIGNED: 10/05/2021

<p>NAN YA PLASTICS CORP. USA 8989 NORTH LOOP EAST HOUSTON, TX 77029</p>		
<p>SERIES SLPS OUTSWING 3/4 LITE FIBERGLASS PATIO DOOR NON-IMPACT SIDELITE INSTALLATION DETAILS</p>		
DRAWN: N.G.	DWG NO. 08-02502	REV B
SCALE NTS	DATE 10/20/14	SHEET 9 OF 15
<p>L. ROBERTO LOMAS P.E. 1432 WOODFORD RD LEWISVILLE, NC 27023 434-688-0609 rllomas@rlomaspe.com</p>		



Luis R. Lomas P.E.
TX No.: 101889

REVISIONS			
REV	DESCRIPTION	DATE	APPROVED
A	UPDATED COMPONENTS & DETAILS	08/15/18	R.L.
B	UPDATED PER NEW CODES	10/05/2021	R.L.



EXTERIOR INTERIOR

#10 SMS OR SELF DRILLING SCREW

#10 X 2 1/2" WOOD SCREW
SEE NOTE 20, SHEET 1.

1/4" MAX. SHIM SPACE

1/2" MIN. EDGE DISTANCE

#10 X 2 1/2" WOOD SCREW
SEE NOTE 20, SHEET 1.

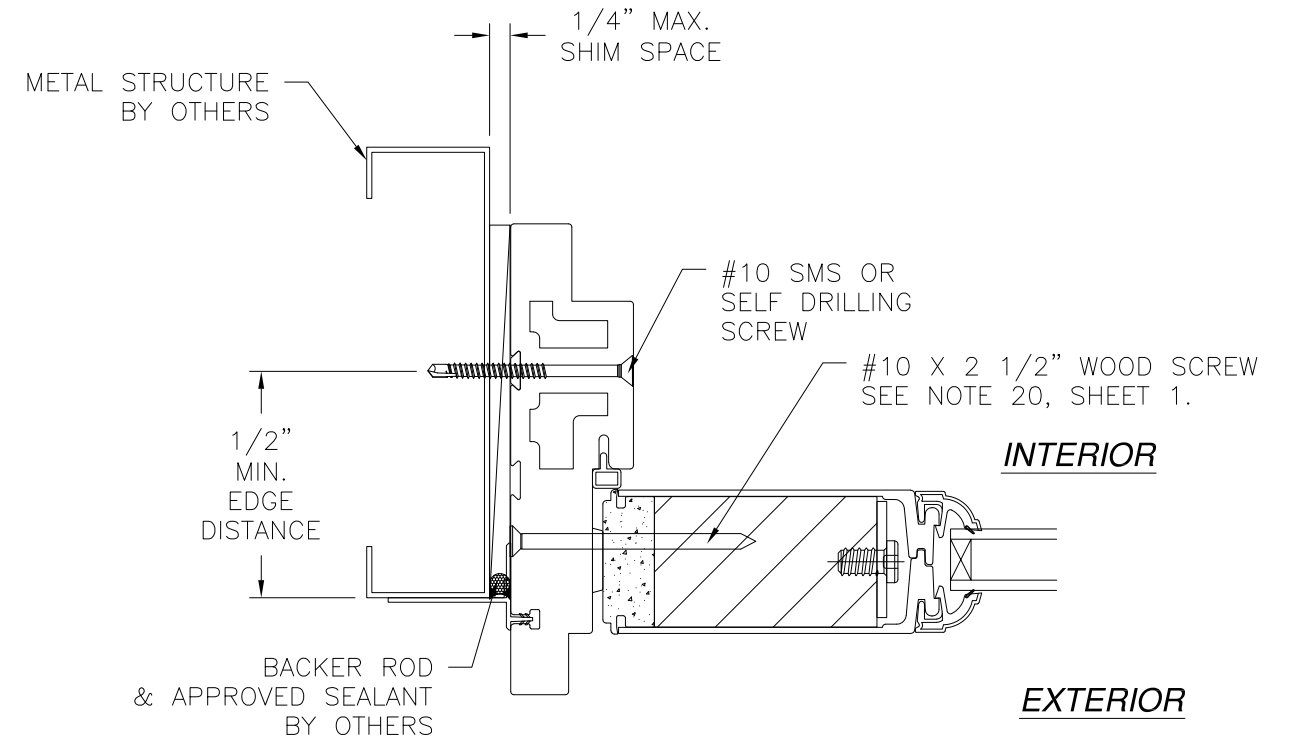
#10 SMS OR SELF DRILLING SCREW

SILL TO BE SET IN A BED OF APPROVED SEALANT

METAL STRUCTURE BY OTHERS

1/2" MIN. EDGE DISTANCE

SIDELITE INSTALLATION DETAILS
METAL STRUCTURE INSTALLATION



INTERIOR

EXTERIOR

#10 SMS OR SELF DRILLING SCREW

#10 X 2 1/2" WOOD SCREW
SEE NOTE 20, SHEET 1.

1/4" MAX. SHIM SPACE

1/2" MIN. EDGE DISTANCE

BACKER ROD & APPROVED SEALANT BY OTHERS

SIDELITE INSTALLATION DETAILS
METAL STRUCTURE INSTALLATION

NOTES:

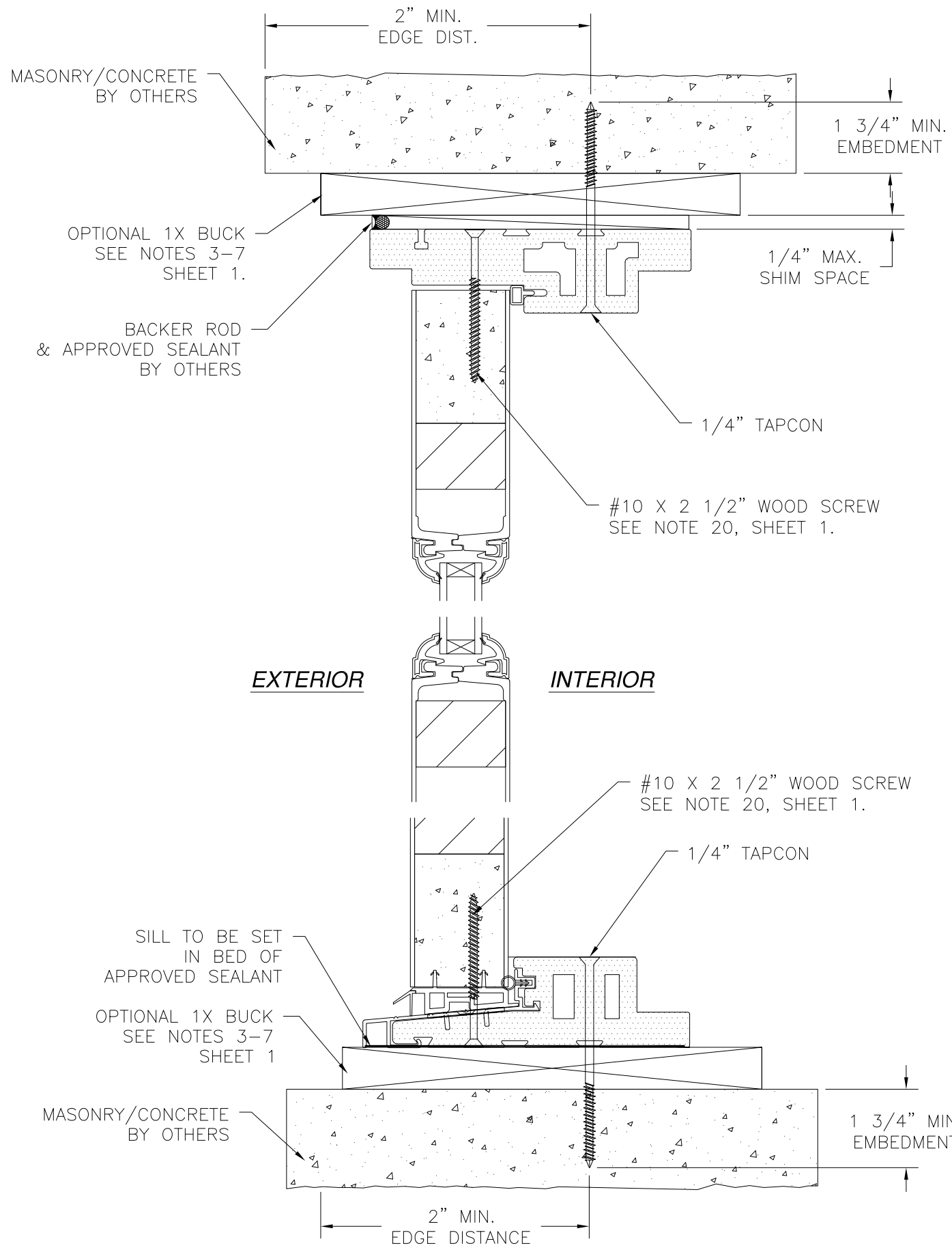
1. INTERIOR AND EXTERIOR FINISHES, BY OTHERS, NOT SHOWN FOR CLARITY.
2. PERIMETER AND JOINT SEALANT BY OTHERS TO BE DESIGNED IN ACCORDANCE WITH ASTM E2112

SIGNED: 10/05/2021

<p>NAN YA PLASTICS CORP. USA 8989 NORTH LOOP EAST HOUSTON, TX 77029</p>		
<p>SERIES SLPS OUTSWING 3/4 LITE FIBERGLASS PATIO DOOR NON-IMPACT SIDELITE INSTALLATION DETAILS</p>		
DRAWN: N.G.	DWG NO. 08-02502	REV B
SCALE NTS	DATE 10/20/14	SHEET 10 OF 15
<p>L. ROBERTO LOMAS P.E. 1432 WOODFORD RD LEWISVILLE, NC 27023 434-688-0609 rllomas@rlomaspe.com</p>		

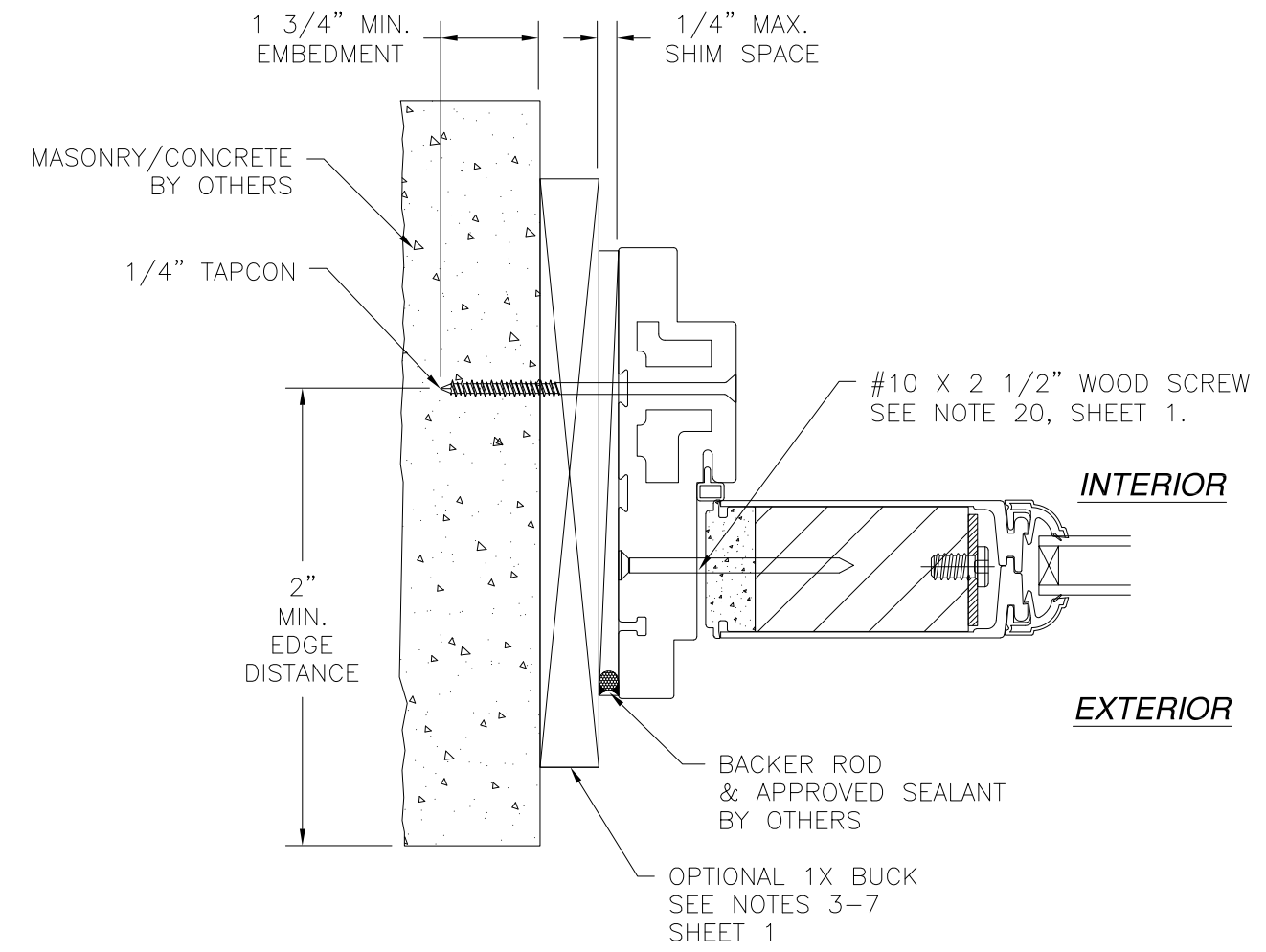


Luis R. Lomas P.E.
TX No.: 101889



SIDELITE INSTALLATION DETAILS
METAL STRUCTURE INSTALLATION

REVISIONS			
REV	DESCRIPTION	DATE	APPROVED
A	UPDATED COMPONENTS & DETAILS	08/15/18	R.L.
B	UPDATED PER NEW CODES	10/05/2021	R.L.



- NOTES:**
1. INTERIOR AND EXTERIOR FINISHES, BY OTHERS, NOT SHOWN FOR CLARITY.
 2. PERIMETER AND JOINT SEALANT BY OTHERS TO BE DESIGNED IN ACCORDANCE WITH ASTM E2112

SIGNED: 10/05/2021

NAN YA PLASTICS CORP. USA
8989 NORTH LOOP EAST
HOUSTON, TX 77029

SERIES SLPS OUTSWING 3/4 LITE FIBERGLASS
PATIO DOOR NON-IMPACT
SIDELITE INSTALLATION DETAILS

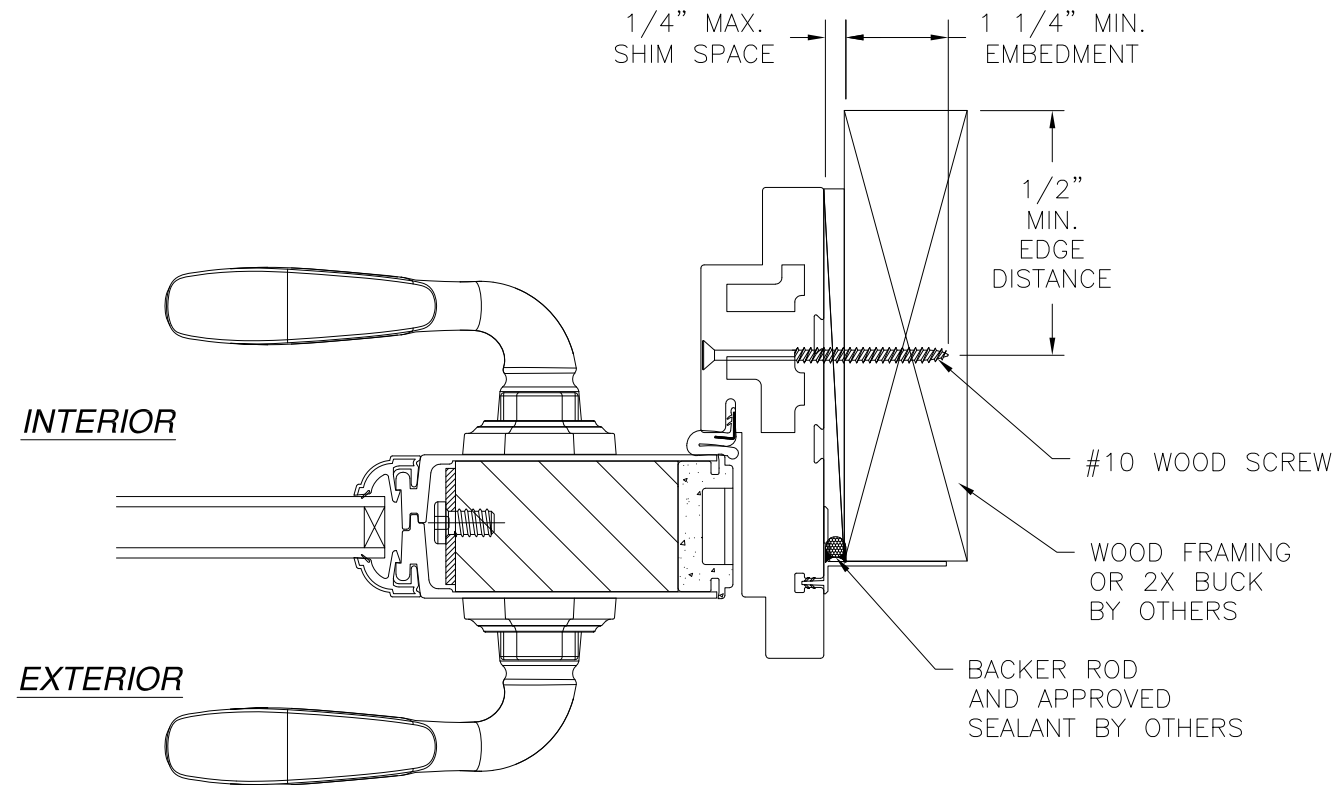
DRAWN: N.G.	DWG NO. 08-02502	REV B
SCALE NTS	DATE 10/20/14	SHEET 11 OF 15

L. ROBERTO LOMAS P.E.
1432 WOODFORD RD LEWISVILLE, NC 27023
434-688-0609 rllomas@rlomaspe.com

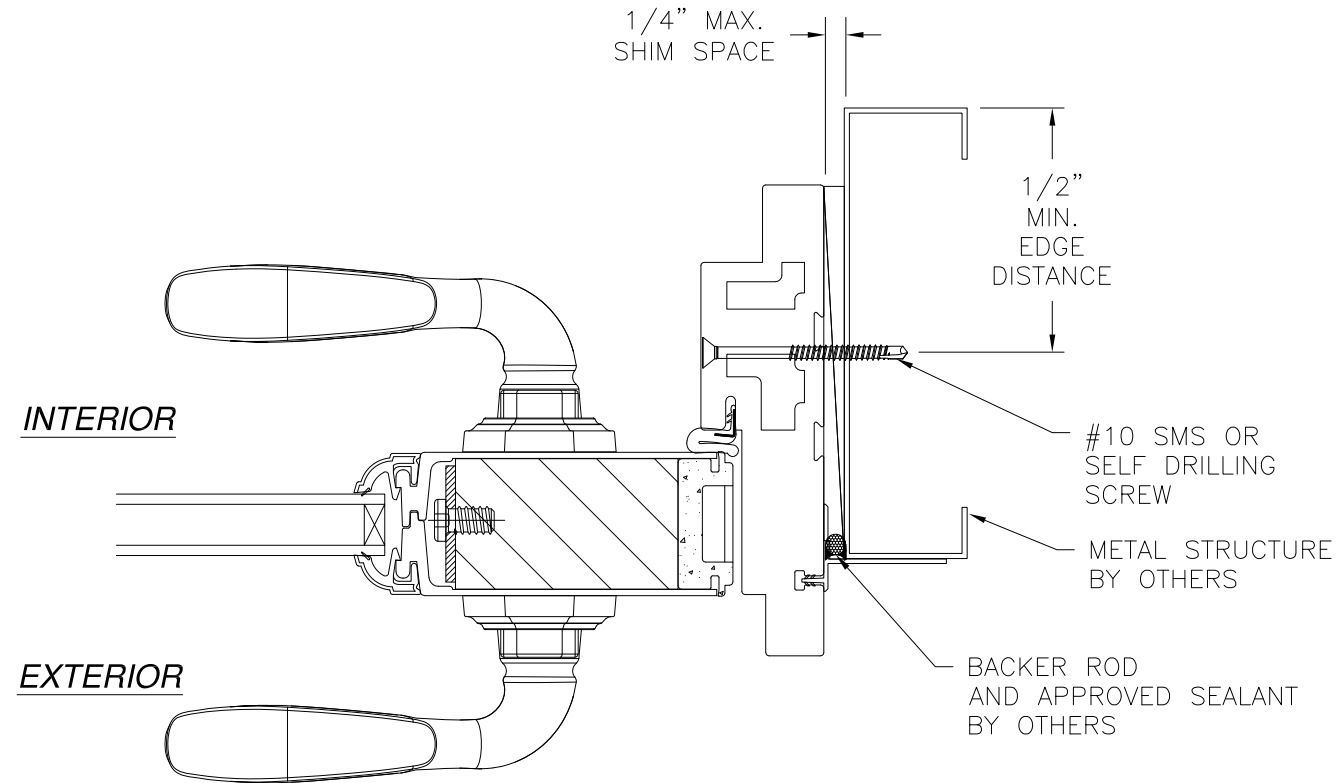


Luis R. Lomas P.E.
TX No.: 101889

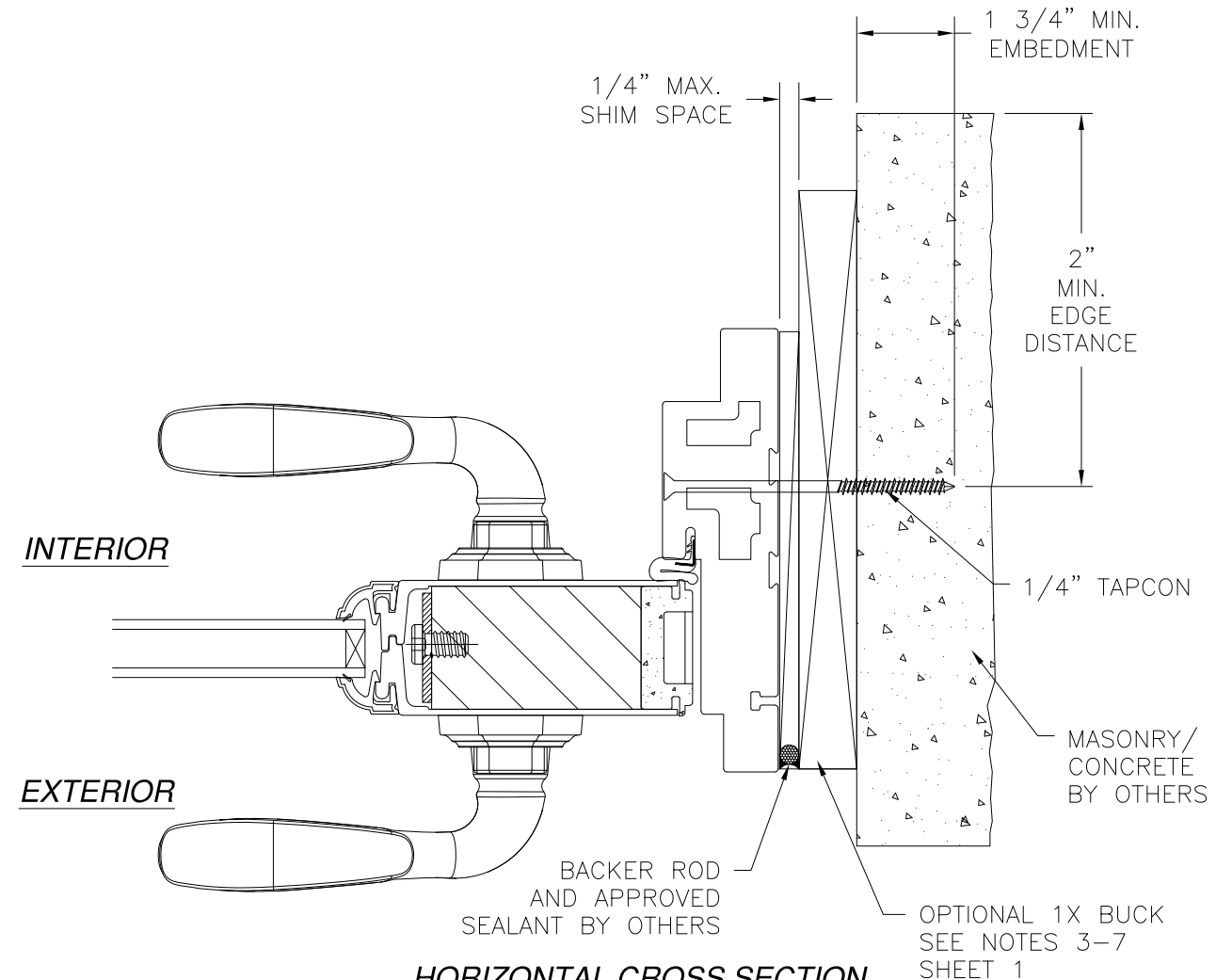
REVISIONS			
REV	DESCRIPTION	DATE	APPROVED
A	UPDATED COMPONENTS & DETAILS	08/15/18	R.L.
B	UPDATED PER NEW CODES	10/05/2021	R.L.



**HORIZONTAL CROSS SECTION
STRIKE JAMB DETAIL
2X BUCK/WOOD FRAMING INSTALLATION**



**HORIZONTAL CROSS SECTION
STRIKE JAMB DETAIL
METAL STRUCTURE INSTALLATION**



**HORIZONTAL CROSS SECTION
STRIKE JAMB DETAIL
CONCRETE/MASONRY INSTALLATION**

- NOTES:**
- INTERIOR AND EXTERIOR FINISHES, BY OTHERS, NOT SHOWN FOR CLARITY.
 - PERIMETER AND JOINT SEALANT BY OTHERS TO BE DESIGNED IN ACCORDANCE WITH ASTM E2112

SIGNED: 10/05/2021

NAN YA PLASTICS CORP. USA
8989 NORTH LOOP EAST
HOUSTON, TX 77029

SERIES SLPS OUTSWING 3/4 LITE FIBERGLASS
PATIO DOOR NON-IMPACT
INSTALLATION DETAILS

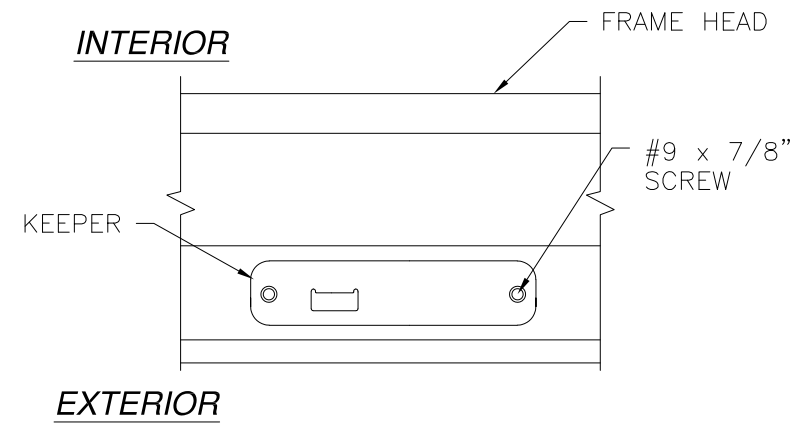
DRAWN: N.G.	DWG NO. 08-02502	REV B
SCALE NTS	DATE 10/20/14	SHEET 12 OF 15

L. ROBERTO LOMAS P.E.
1432 WOODFORD RD LEWISVILLE, NC 27023
434-688-0609 rllomas@rlomaspe.com

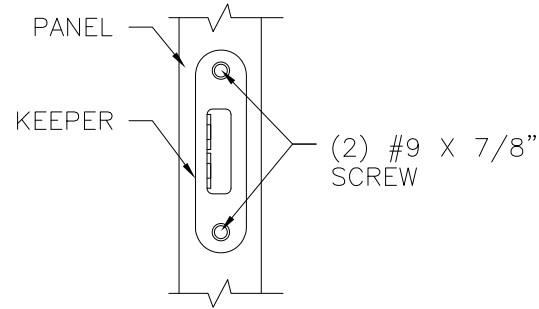


Luis R. Lomas P.E.
TX No.: 101889

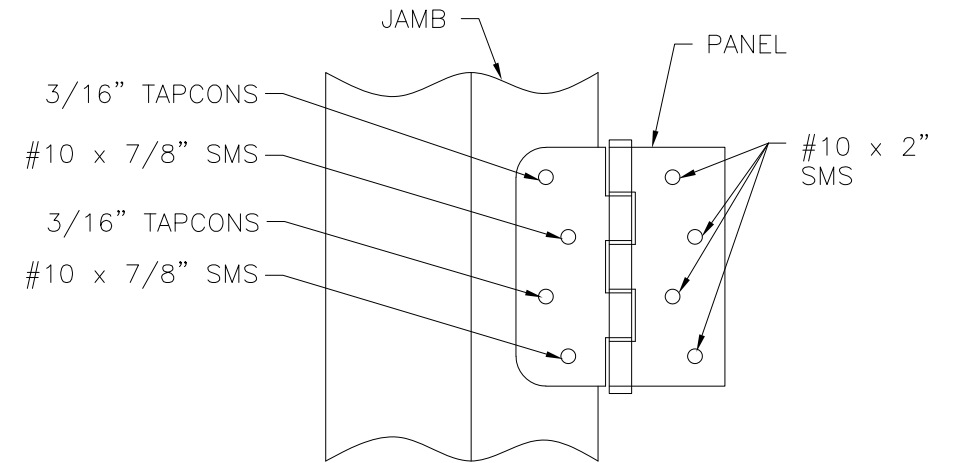
REVISIONS			
REV	DESCRIPTION	DATE	APPROVED
A	UPDATED COMPONENTS & DETAILS	08/15/18	R.L.
B	UPDATED PER NEW CODES	10/05/2021	R.L.



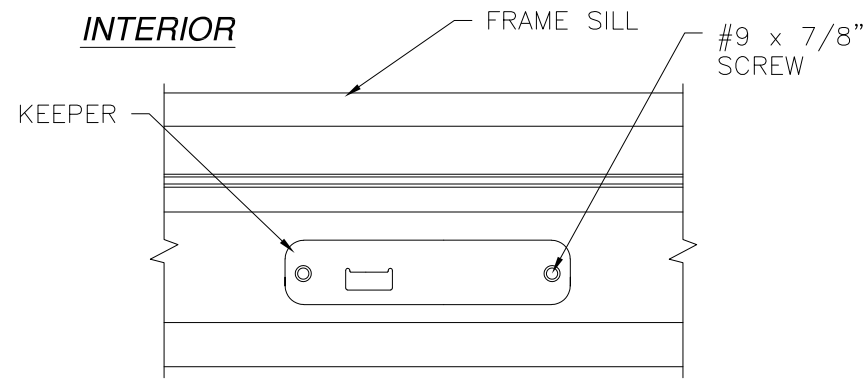
HEAD KEEPER DETAIL



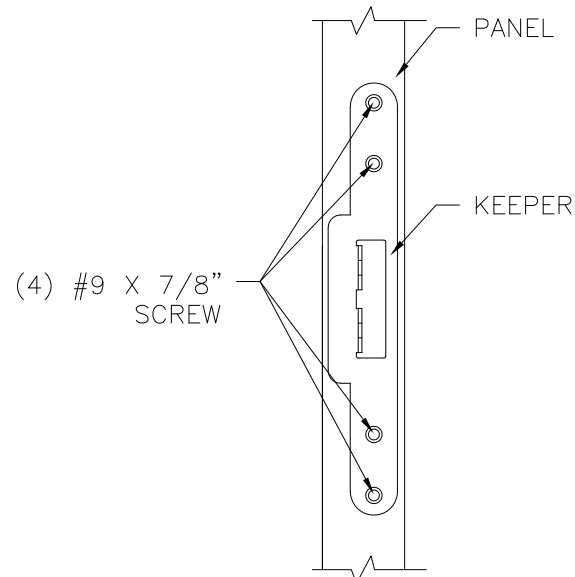
HOOK KEEPER DETAIL



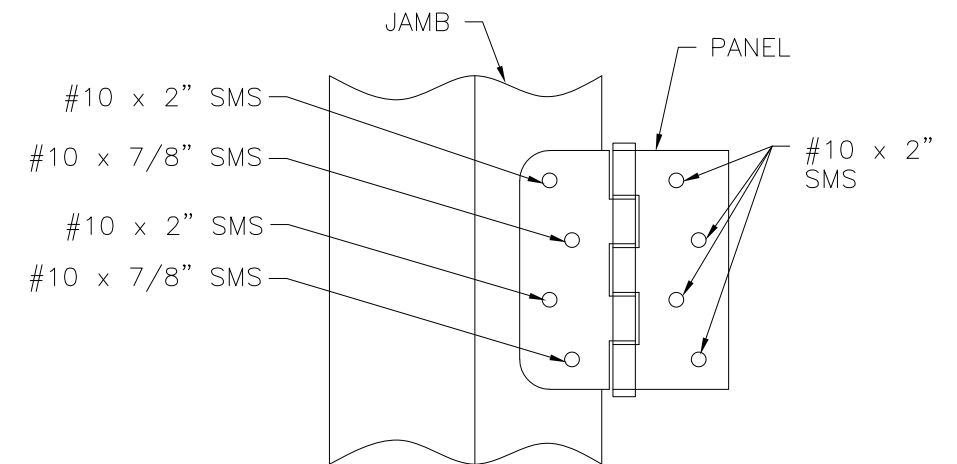
**HINGE INSTALLATION DETAIL
MASONRY/CONCRETE INSTALLATION**



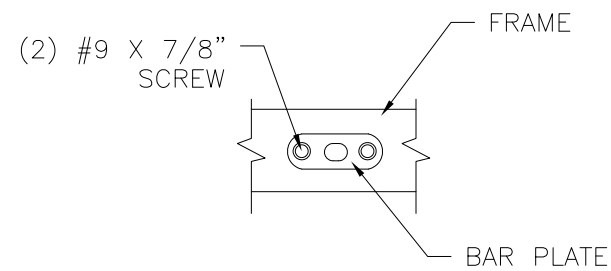
SILL KEEPER DETAIL



**SLAB MULTI-POINT
LOCK KEEPER DETAIL**



**HINGE INSTALLATION DETAIL
WOOD FRAMING INSTALLATION**



DRIVE BAR PLATE DETAIL

SIGNED: 10/05/2021

NAN YA PLASTICS CORP. USA
8989 NORTH LOOP EAST
HOUSTON, TX 77029

SERIES SLPS OUTSWING 3/4 LITE FIBERGLASS
PATIO DOOR NON-IMPACT
INSTALLATION DETAILS

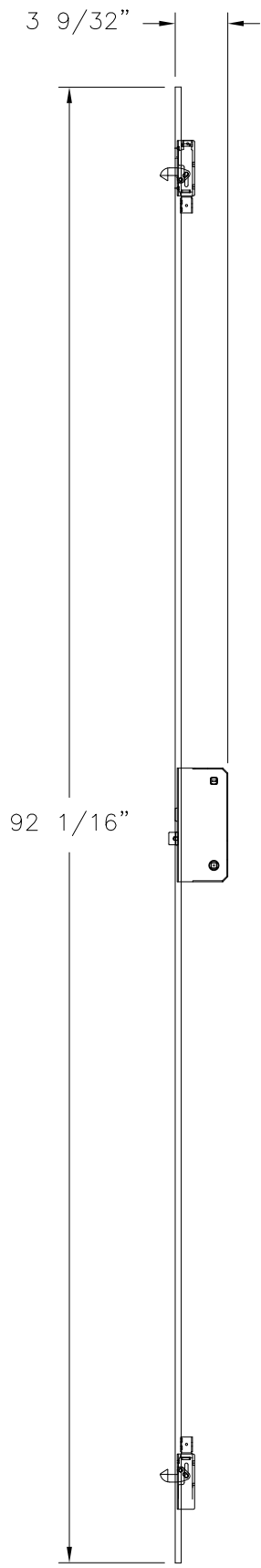
DRAWN: N.G.	DWG NO. 08-02502	REV B
SCALE NTS	DATE 10/20/14	SHEET 13 OF 15

L. ROBERTO LOMAS P.E.
1432 WOODFORD RD LEWISVILLE, NC 27023
434-688-0609 rllomas@lrlomaspe.com

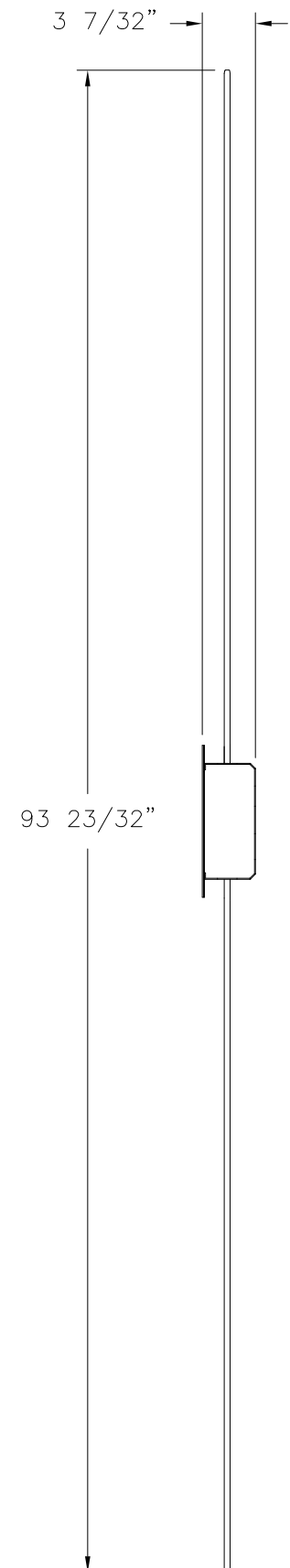


Luis R. Lomas P.E.
TX No.: 101889

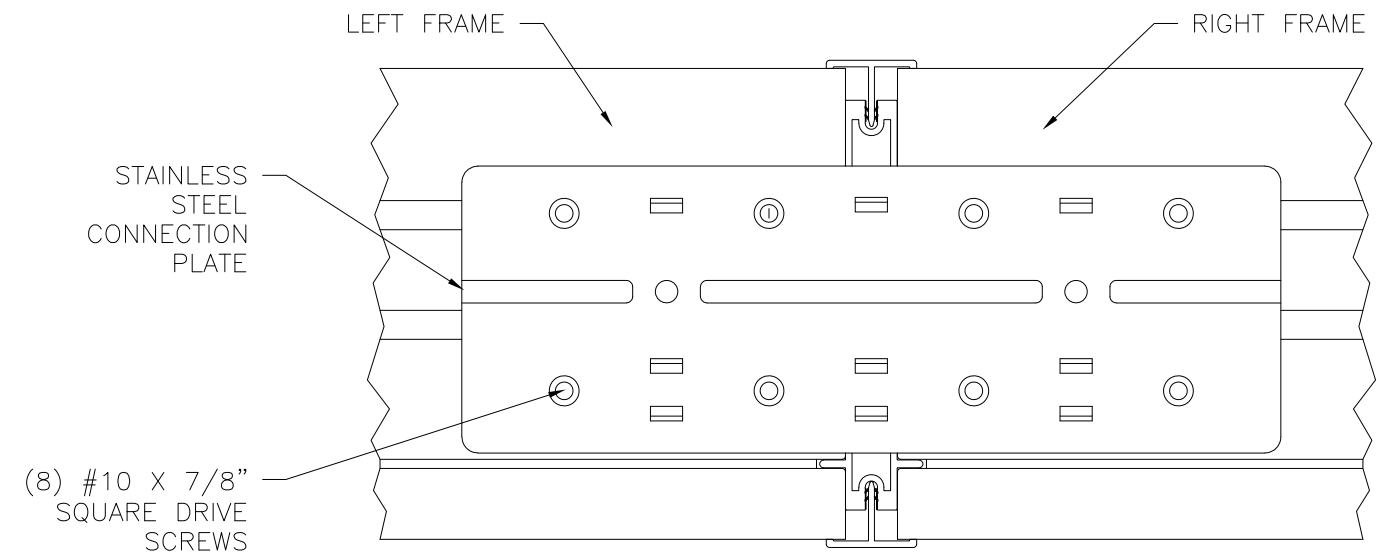
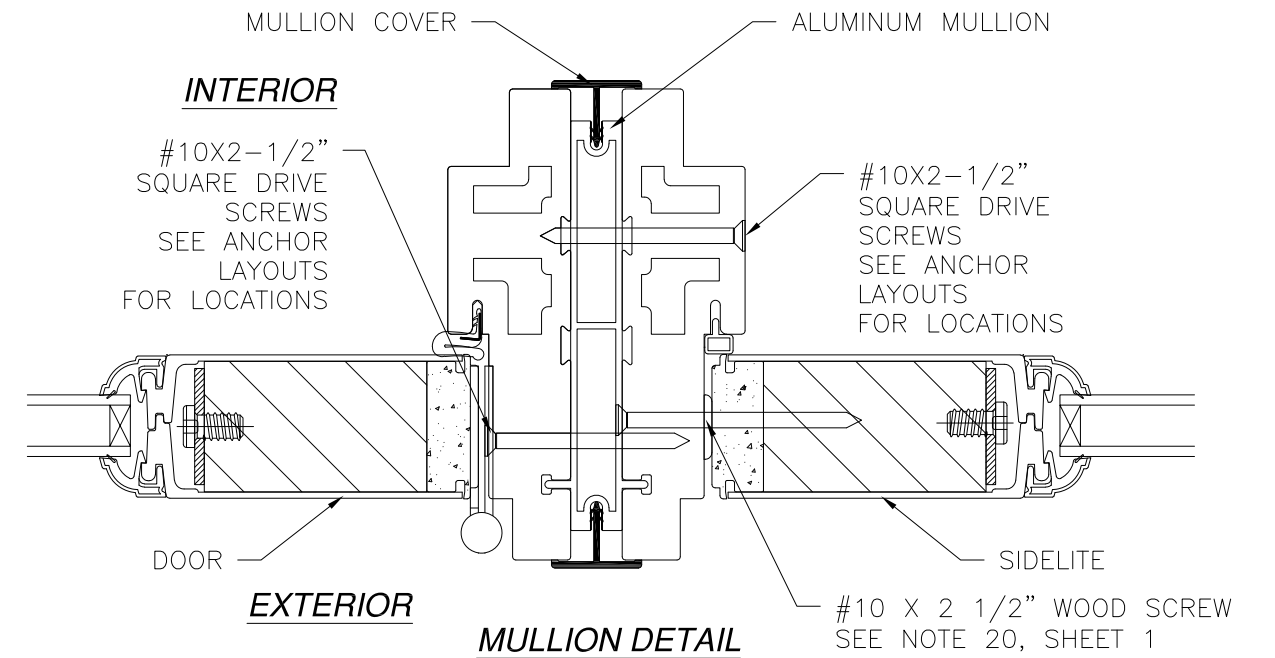
REVISIONS			
REV	DESCRIPTION	DATE	APPROVED
A	UPDATED COMPONENTS & DETAILS	08/15/18	R.L.
B	UPDATED PER NEW CODES	10/05/2021	R.L.



MULTI-POINT LOCKING SYSTEM
STAINLESS STEEL
(SS93 BY JAM YUAN ENTERPRISES CO. LTD)



TOP/BOTTOM DRIVE BAR SYSTEM
STAINLESS STEEL
(SS916 BY JAM YUAN ENTERPRISES CO. LTD)



FRAME CONNECTION DETAIL

SIGNED: 10/05/2021

NAN YA PLASTICS CORP. USA
8989 NORTH LOOP EAST
HOUSTON, TX 77029

SERIES SLPS OUTSWING 3/4 LITE FIBERGLASS
PATIO DOOR NON-IMPACT
INSTALLATION DETAILS

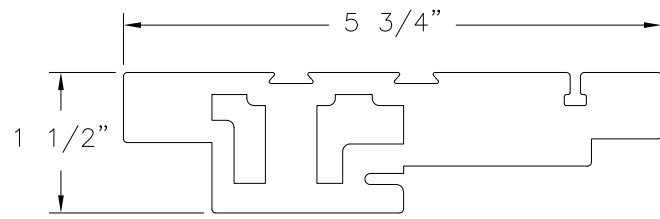
DRAWN: N.G.	DWG NO. 08-02502	REV B
SCALE NTS	DATE 10/20/14	SHEET 14 OF 15

L. ROBERTO LOMAS P.E.
1432 WOODFORD RD LEWISVILLE, NC 27023
434-688-0609 rllomas@rlomaspe.com

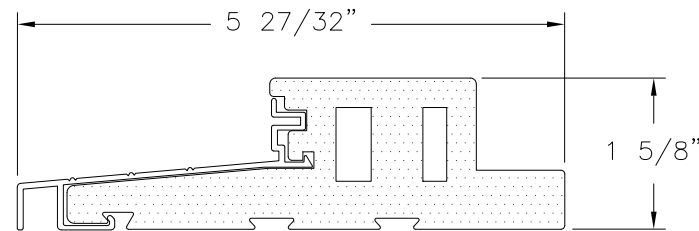


Luis R. Lomas P.E.
TX No.: 101889

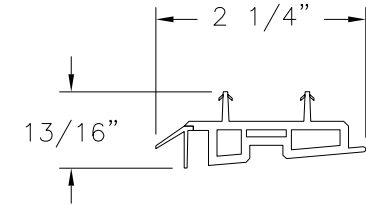
REVISIONS			
REV	DESCRIPTION	DATE	APPROVED
A	UPDATED COMPONENTS & DETAILS	08/15/18	R.L.
B	UPDATED PER NEW CODES	10/05/2021	R.L.



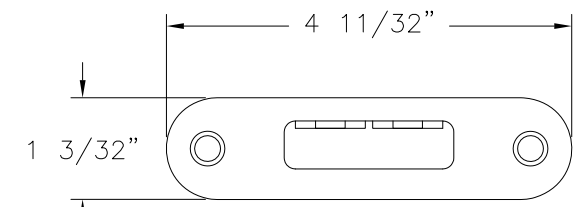
HEAD FRAME & JAMB
FOAM PVC CO-EX



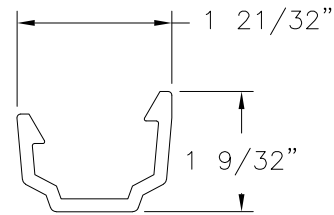
OUTSWING DOOR SILL DETAIL
FOAM PVC CO-EX & ALUMINUM



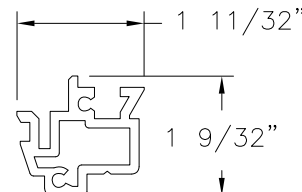
DOOR BOTTOM-A
PVC CO-EX



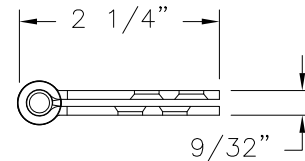
HOOK KEEPER
STAINLESS STEEL (SS92G)
BY JAM YUAN ENTERPRISES CO., LTD.



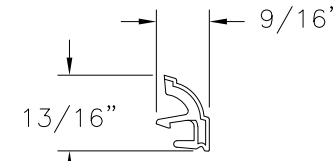
T-ASTRAGAL (A)
RIGID PVC



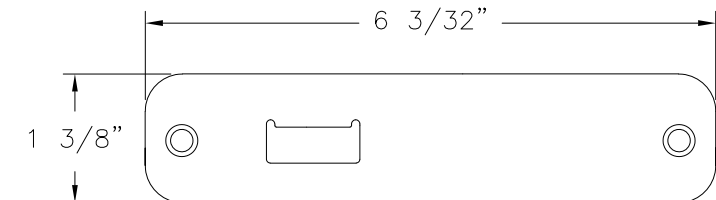
REINFORCEMENT (A)
ALUMINUM



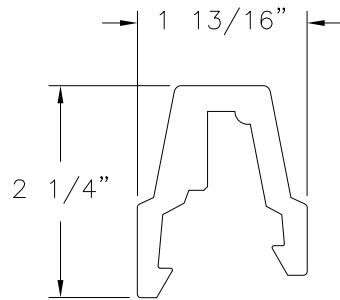
4" X 4" DOOR HINGE
STEEL



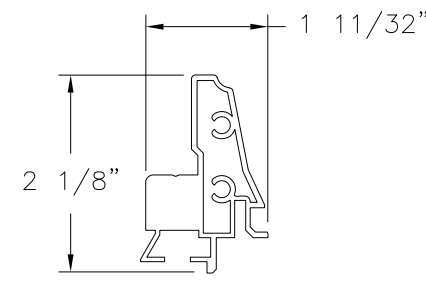
3/4" GLAZING BEAD
PVC



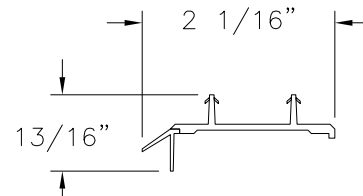
TOP/BOTTOM BAR KEEPER
STAINLESS STEEL (SS92H)
BY JAM YUAN ENTERPRISES CO., LTD



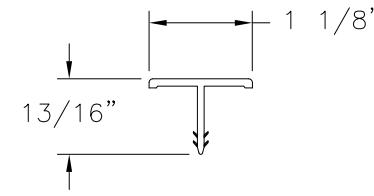
MULLION COVER (B)
FOAM PVC



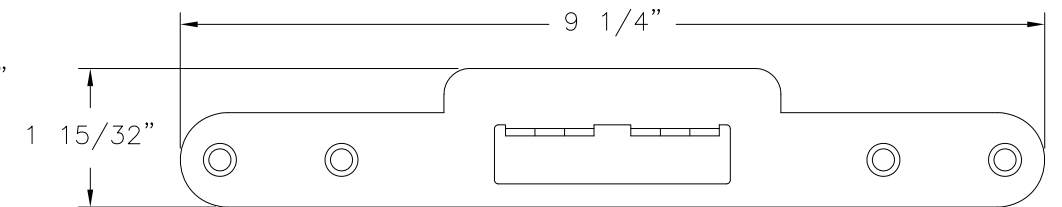
REINFORCEMENT (B)
ALUMINUM



DOOR BOTTOM-B
PVC CO-EX

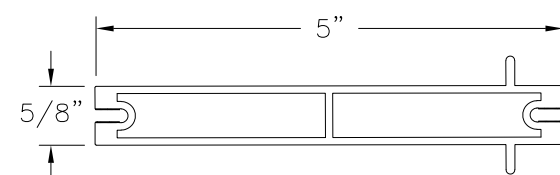


MULLION COVER
PVC CO-EX

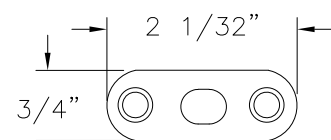


SLAB MULTI-POINT LOCK KEEPER
STAINLESS STEEL (SS92G)
BY JAM YUAN ENTERPRISES CO., LTD

SIGNED: 10/05/2021



ALUMINUM MULLION
ALUMINUM



DRIVE BAR PLATE
STAINLESS STEEL
BY JAM YUAN ENTERPRISES CO., LTD.

NAN YA PLASTICS CORP. USA
8989 NORTH LOOP EAST
HOUSTON, TX 77029

SERIES SLPS OUTSWING 3/4 LITE FIBERGLASS
PATIO DOOR NON-IMPACT
COMPONENTS

DRAWN: N.G.	DWG NO. 08-02502	REV B
SCALE NTS	DATE 10/20/14	SHEET 15 OF 15

L. ROBERTO LOMAS P.E.
1432 WOODFORD RD LEWISVILLE, NC 27023
434-688-0609 rllomas@rlomaspe.com



Luis R. Lomas P.E.
TX No.: 101889