

GENERAL NOTES AND SPECIFICATIONS:

1. SINGLE SERIES LS18 FLUSH/EMBOSSED OUTSWING COMMERCIAL STEEL DOOR W/SERIES "AS" FRAME, SHOWN ON THIS PRODUCT EVALUATION DOCUMENT (P.E.D.) HAS BEEN VERIFIED FOR CODE COMPLIANCE IN ACCORDANCE WITH THE 2018 EDITION OF THE INTERNATIONAL BUILDING CODE, (IBC).

DESIGN WIND LOADS SHALL BE DETERMINED AS PER SECTION 1609 OF THE INTERNATIONAL BUILDING CODE, FOR A BASIC WIND SPEED AS REQUIRED BY THE JURISDICTION WHERE PRODUCT WILL BE INSTALLED, AND FOR A DIRECTIONALITY FACTOR $K_d = 0.85$, IN ACCORDANCE WITH ASCE 7-16 STANDARD, AND SHALL NOT EXCEED THE DESIGN PRESSURE RATING INDICATED ON THIS SHEET.

IN ORDER TO VERIFY THAT ANCHORS ON THIS P.E.D., AS TESTED, WERE NOT OVERSTRESSED, A 33% INCREASE IN ALLOWABLE STRESS FOR WIND LOADS WAS NOT USED IN THEIR ANALYSIS. FASTENERS SPACING TO WOOD HAS BEEN DETERMINED IN ACCORDANCE WITH N.D.S. 2018.

THIS DOOR'S ADEQUACY FOR IMPACT AND CYCLIC RESISTANCE HAS BEEN VERIFIED IN ACCORDANCE WITH SECTION 1609.2 OF THE ABOVE MENTIONED CODE AS PER FLORIDA HIGH VELOCITY HURRICANE ZONE PROTOCOLS TAS-201, TAS-202, TAS-203 AS PER HURRICANE TESTING LABORATORY, INC. REPORT #0279-1017-01 AND AS PER SUBMITTED STRUCTURAL CALCULATIONS, PERFORMED AS PER SECTION 1604 OF THE ABOVE MENTIONED BUILDING CODE.

2. ALL COMPONENTS SHALL BE AS SPECIFIED ON APPLICABLE DETAIL SHEETS AND AT BILL OF MATERIALS (SHEET 14) OF THIS DRAWING.

3. COMPLIANCE OF EGRESS / ESCAPE REQUIREMENTS OF THESE DOORS PER IBC TO BE DETERMINED BY BUILDING OFFICIALS ON A CASE-BY-CASE BASIS.

4. ALL SCREWS INSTALLED TO BE STAINLESS STEEL 304 OR 316 AISI SERIES AND MEET ASTM A167, OR HOT DIPPED GALVANIZED (AFTER FABRICATION) CARBON STEEL AS PER ASTM A 123 OR ASTM A153, OR HOT DIPPED GALVANIZED OR GALVANNEALED (PRIOR TO FABRICATION) AND MEET ASTM A653 WITH 50 ksi YIELD STRENGTH AND 90 hsi TENSILE STRENGTH. BOLTS TO BE ASTM A-307 GALVANIZED STEEL OR AISI 304 SERIES STAINLESS STEEL, WITH 35 Ksi MINIMUM YIELD STRENGTH.

5. ALL WELDING TO CONFORM W/AMERICAN WELDING SOCIETY A.W.S. D.1.3 AND D-19.0 REGULATIONS. USE E60XX ELECTRODES

6. ALL ANCHORS FOR DOOR FRAME CONNECTIONS TO EXISTING STRUCTURE SHALL BE AS SPECIFIED ON SHEET 13 OF THIS DRAWING. MAXIMUM ANCHORS SPACINGS SHALL BE AS PER ELEVATIONS ON SHEET 1A OF THIS DRAWING.

7. PROVIDE 1/4" MAX. LOAD BEARING SHIM SPACE.

8. **THIS DOOR WILL NOT REQUIRE A HURRICANE PROTECTION DEVICE.** DOOR MEETS IMPACT RESISTANCE FOR TYPE "D" MISSILE FOR BASIC PROTECTION.

9. THESE DOOR ASSEMBLIES ARE APPROVED FOR WATER AND AIR INFILTRATION AS PER TESTING INDICATED ON NOTE 1, AND SHALL BE LIMITED TO DESIGN PRESSURE RATINGS INDICATED ON THIS SHEET.

10. ALL EXISTING WALLS (STRUCTURE) WHERE DOOR IS TO BE INSTALLED MUST BE BUILT IN ACCORDANCE WITH THE INTERNATIONAL BUILDING CODE AND SHALL BE DESIGNED TO SUSTAIN THE SUPERIMPOSED LOADS TRANSFERRED BY THE DOOR SYSTEM.

11. ALL ALUMINUM EXTRUSIONS IN CONTACT WITH DISSIMILAR MATERIALS SHALL COMPLY WITH SECTION III-6 OF THE ALUMINUM DESIGN MANUAL 2015 EDITION.

12. PROVIDE SPECIFIED SEALANT AT ALL DOOR FRAME AND THRESHOLD.

13. (a) THIS P.E.D. PREPARED BY THIS ENGINEER IS GENERIC AND DOES NOT PROVIDE INFORMATION FOR A SITE SPECIFIC PROJECT; i.e. WHERE THE SITE CONDITIONS DEVIATE FROM THE P.E.D.

(b) CONTRACTOR TO BE RESPONSIBLE FOR THE SELECTION, PURCHASE AND INSTALLATION INCLUDING LIFE SAFETY OF THIS PRODUCT, BASED ON THIS P.E.D. PROVIDED HE/SHE DOES NOT DEVIATE FROM THE CONDITIONS DETAILED ON THIS DOCUMENT. CONSTRUCTION SAFETY AT SITE IS THE CONTRACTOR RESPONSIBILITY.

(c) THIS P.E.D. WILL BE CONSIDERED INVALID IF ALTERED BY ANY MEANS.

(d) SITE SPECIFIC PROJECTS SHALL BE PREPARED BY A PROFESSIONAL ENGINEER OR ARCHITECT WHICH WILL BECOME THE ENGINEER OF RECORD (E.O.R.) FOR THE PROJECT AND WHO WILL BE RESPONSIBLE FOR THE PROPER USE OF THE P.E.D.

(e) ORIGINAL P.E.D. SHALL BEAR THE DATE AND ORIGINAL SEAL AND SIGNATURE OF THE PROFESSIONAL ENGINEER OF RECORD THAT PREPARED IT.

14. PRODUCT MANUFACTURER'S LABEL SHALL BE LOCATED ON A READILY VISIBLE LOCATION AT PRODUCT IN ACCORDANCE WITH TEXAS DEPARTMENT OF INSURANCE REQUIREMENTS. ONE LABEL SHALL BE PLACED FOR EVERY OPENING.

SHEETS CONTENT:

- PAGE #1 INDEX & COVER PAGE
- PAGE #1A ASSEMBLY ELEVATIONS, (DETAILS #20,21,22)
- PAGE #2 TYPICAL SECTION THROUGH, VERTICAL/HORIZONTAL.
- PAGE #3 FRAME SECTIONS AND REINFORCINGS, (DETAILS #15,16,17,18,19)
- PAGE #4 DOOR SECTION THROUGH EDGE SEAM, (DETAIL #6)
- PAGE #5 DOOR TOP AND BOTTOM TYPICAL END CHANNEL, (DETAIL #12)
- PAGE #6 DOOR SURFACE CLOSER REINFORCING, (DETAIL #11)
- PAGE #7 DOOR SURFACE CLOSER REINF AND END CHANNEL ASSEMBLY, (DETAIL #13)
- PAGE #8 DOOR STEEL TOP CAP, (DETAIL #14)
- PAGE #9 DOOR HINGE REINFORCING.
- PAGE #10 ANSI #A115.1 #86 MORTISE LOCK,RP REINFORCINGS, (DETAIL #9)
- PAGE #11 #161 LOCK, REINFORCINGS, (DETAIL #8)
- PAGE #12 RIM PANIC SURFACE BOLT REINFORCINGS, (DETAIL#10)
- PAGE #13 13A ANCHOR OPTIONS AND DETAILS
- PAGE #14 BILL OF MATERIALS

**MAX. DESIGN PRESSURE
RATING
+90, -90 PSF**

**THIS DRAWING SHALL ONLY BE USED TO
OBTAIN PERMITS UNDER THE TEXAS
DEPARTMENT OF INSURANCE JURISDICTION**



WALTER A. TILLIT Jr P.E.
PROFESSIONAL ENGINEER
6355 N.W 36 STREET, STE. 305
VIRGINIA GARDENS, FL 33166
PHONE(305) 871-1530 FAX (305) 871-1531
TEXAS LIC. # 90691
FIRM REGISTRATION # F-13790

TEXAS DEPARTMENT OF INSURANCE - 2018

SERIES LS18 FLUSH OUTSWING COMMERCIAL STEEL DOOR W/SERIES "AS" STEEL FRAME

DRAWN BY:
M.P.

DAYBAR INDUSTRIES LTD

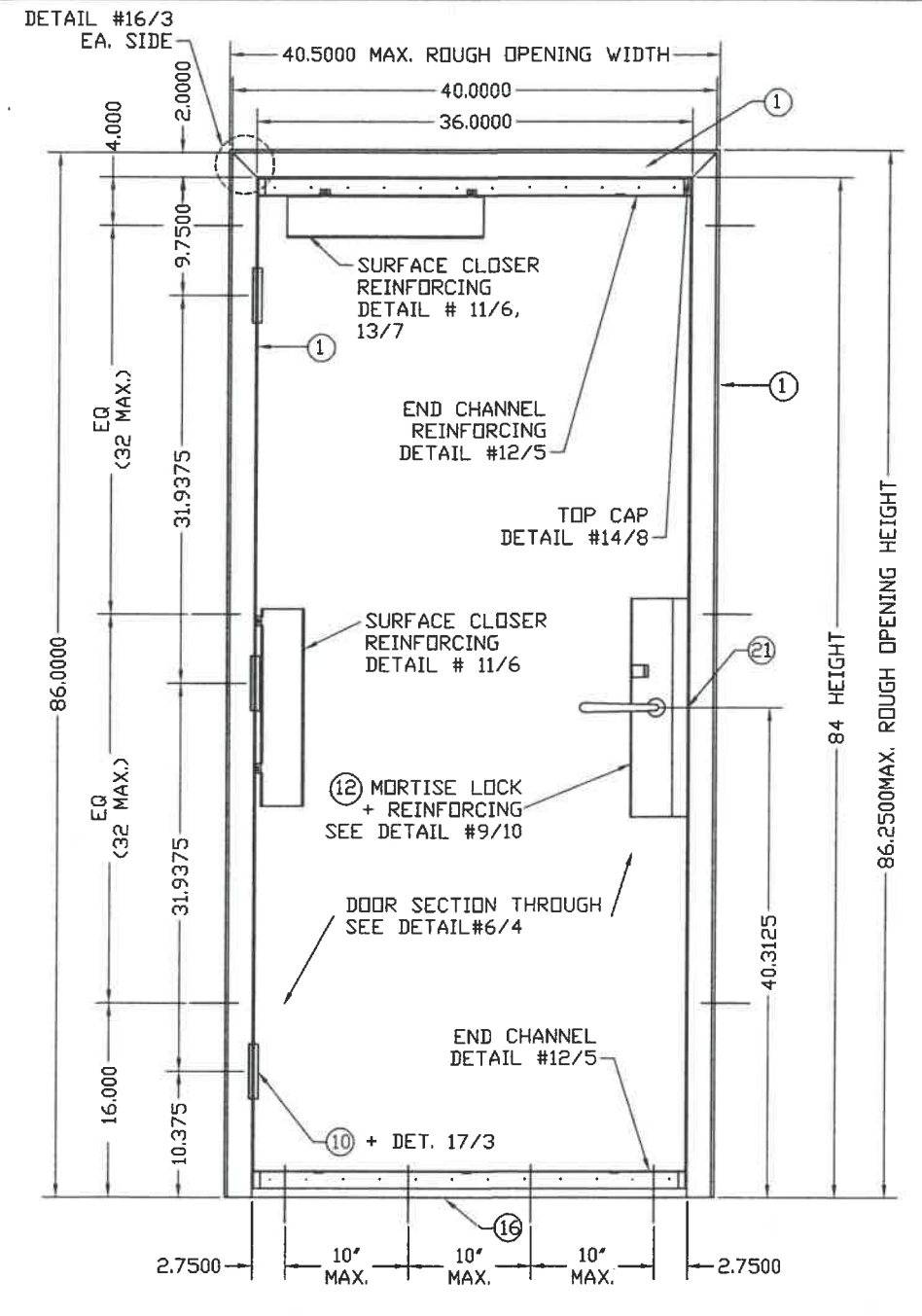
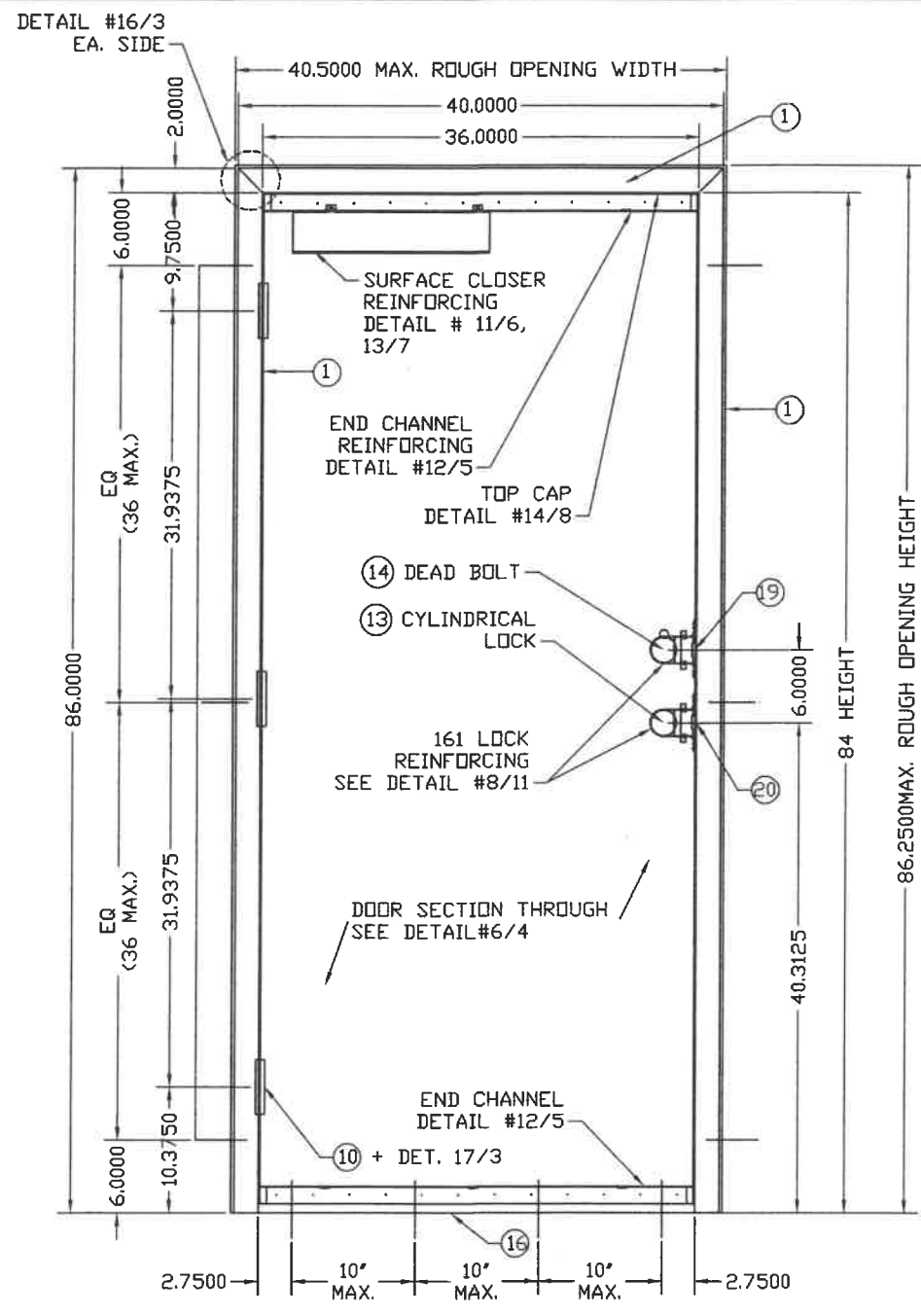
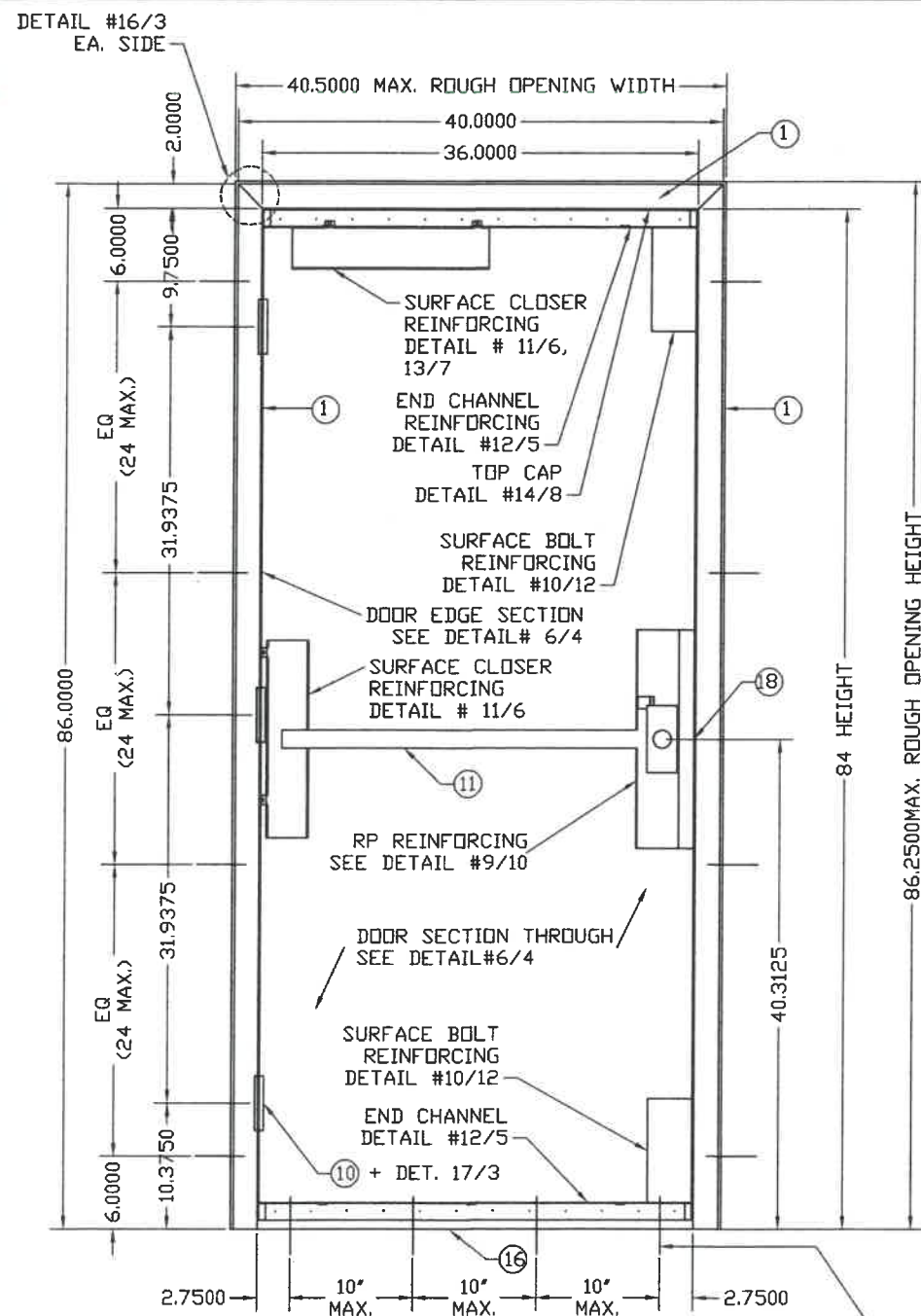
9/30/2021
DATE

50 WEST DRIVE, BRAMPTON,
ON CANADA, L6T 2J4
TEL: 905 625-8000 FAX: 905 625-4204

21-128
DRAWING No

REV. No	DESCRIPTION	DATE	REV. No	DESCRIPTION	DATE
1	OLD 17-059	9/30/21	3	-	-
2	-	-	4	-	-

SHEET 1 OF 14



ASSEMBLY #1 ELEVATION SINGLE DOOR EXTERIOR VIEW (OUTSWING)
WALL CONDITION - EXISTING MASONRY OR WOOD STUD WALL
ANCHOR: E.M.A DETAIL #22
DETEX RIM EXIT DEVICE

TAPCONS OR S.M.S. OR WOOD SCREWS (SEE SHEET 2)

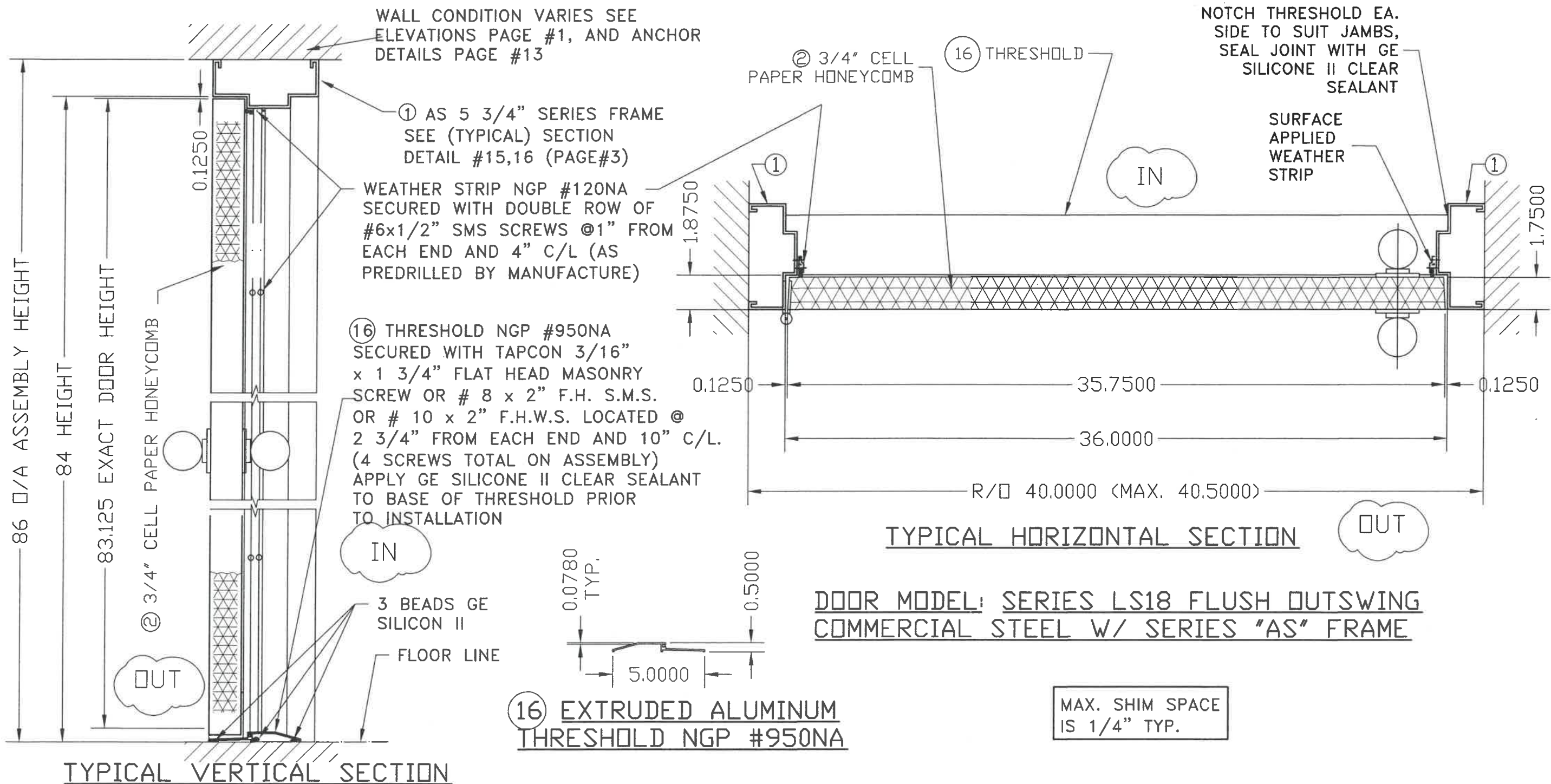
ASSEMBLY #2 ELEVATION SINGLE DOOR EXTERIOR VIEW (OUTSWING)
WALL CONDITION - WOOD STUD
ANCHOR: E.P.C. CLIP-IN DETAIL #20
CYLINDRICAL LOCK + DEAD BOLT

ASSEMBLY #3 ELEVATION SINGLE DOOR EXTERIOR VIEW (OUTSWING)
WALL CONDITION - MASONRY
ANCHOR: WIRE DETAIL #21
MORTISE LOCK.

WALTER A. TILLIT, JR.
 9069
 LICENSED PROFESSIONAL ENGINEER
 P.E. SEAL/SIGNATURE/DATE

WALTER A. TILLIT Jr P.E.
 PROFESSIONAL ENGINEER
 6355 N.W 36 STREET, STE. 305
 VIRGINIA GARDENS, FL 33166
 PHONE(305) 871-1530 FAX (305) 871-1531
 TEXAS LIC. # 90691
 FIRM REGISTRATION # F-13790

TEXAS DEPARTMENT OF INSURANCE - 2018					
SERIES LS18 FLUSH OUTSWING COMMERCIAL STEEL DOOR W/SERIES "AS" STEEL FRAME				DRAWN BY: M.P.	
DAYBAR INDUSTRIES LTD				9/30/2021 DATE	
50 WEST DRIVE, BRAMPTON, ON CANADA, L7T 2J4 TEL: 905 625-8000 FAX: 905 625-4204				21-128 DRAWING No	
REV. No	DESCRIPTION	DATE	REV. No	DESCRIPTION	DATE
1	OLD 17-059	9/30/21	3	-	-
2	-	-	4	-	-



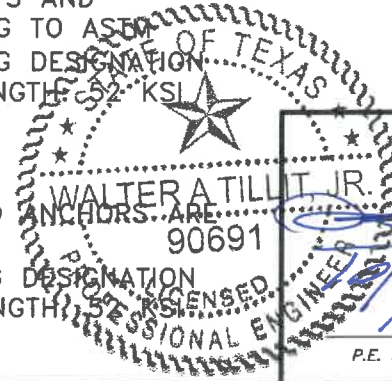
MATERIAL NOTE:

② DOOR 18 GAUGE .045 MINIMUM.

ALL STEEL COMPONENTS OF THIS ITEM, i.e., FACE SHEETS, INTERNAL COMPONENTS AND REINFORCEMENTS ARE MANUFACTURED FROM TENSION LEVELED STEEL CONFORMING TO ASTM A924, GALVANIZED TO ASTM A653/A653M, COMMERCIAL STEEL (TYPE B), COATING DESIGNATION A40, KNOWN COMMERCIALY AS PAINTABLE GALVANNEAL: AVERAGE TENSILE STRENGTH: 52 KSI; AVERAGE YIELD STRENGTH: 45 KSI, ELONGATION: 40%.

① FRAME 16 GAUGE .058 MINIMUM

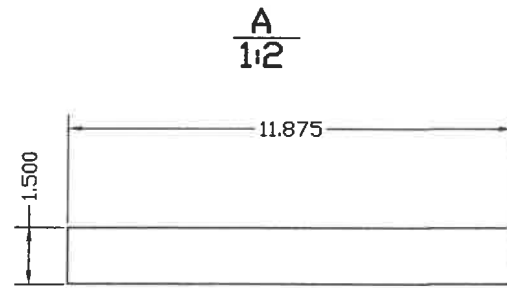
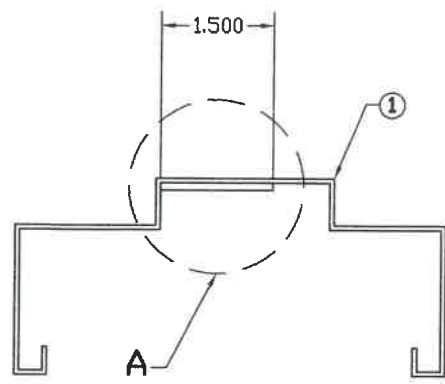
ALL STEEL COMPONENTS OF THIS ITEM, i.e., HEAD, JAMBS, REINFORCEMENTS AND ANCHORS ARE MANUFACTURED FROM COMMERCIAL STEEL (TYPE B), GALVANIZED TO ASTM A653/A653M, COATING DESIGNATION A40, KNOWN COMMERCIALY AS PAINTABLE GALVANNEAL: AVERAGE TENSILE STRENGTH: 52 KSI; AVERAGE YIELD STRENGTH, 45 KSI, ELONGATION: 40%.



WALTER A. TILLIT Jr P.E.
 6355 N.W 36 STREET, STE. 305
 VIRGINIA GARDENS, FL 33166
 PHONE(305) 871-1530 FAX (305) 871-1531
 TEXAS LIC. # 90691
 FIRM REGISTRATION # F-13790

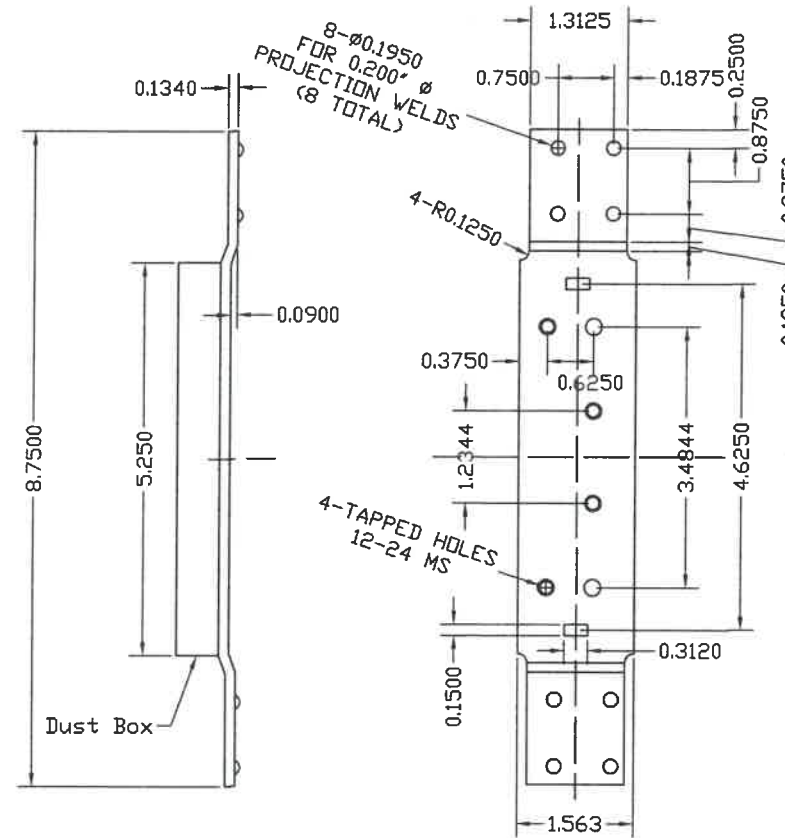
WALTER A. TILLIT Jr P.E.
 6355 N.W 36 STREET, STE. 305
 VIRGINIA GARDENS, FL 33166
 PHONE(305) 871-1530 FAX (305) 871-1531
 TEXAS LIC. # 90691
 FIRM REGISTRATION # F-13790

TEXAS DEPARTMENT OF INSURANCE - 2018					
SERIES LS18 FLUSH OUTSWING COMMERCIAL STEEL DOOR W/SERIES "AS" STEEL FRAME				DRAWN BY: M.P.	
DAYBAR INDUSTRIES LTD				9/30/2021 DATE	
50 WEST DRIVE, BRAMPTON, ON CANADA, L6T 2J4 TEL: 905 625-8000 FAX: 905 625-4204				21-128 DRAWING No	
REV. No	DESCRIPTION	DATE	REV. No	DESCRIPTION	DATE
1	OLD 17-059	9/30/21	3	-	-
2	-	-	4	-	-



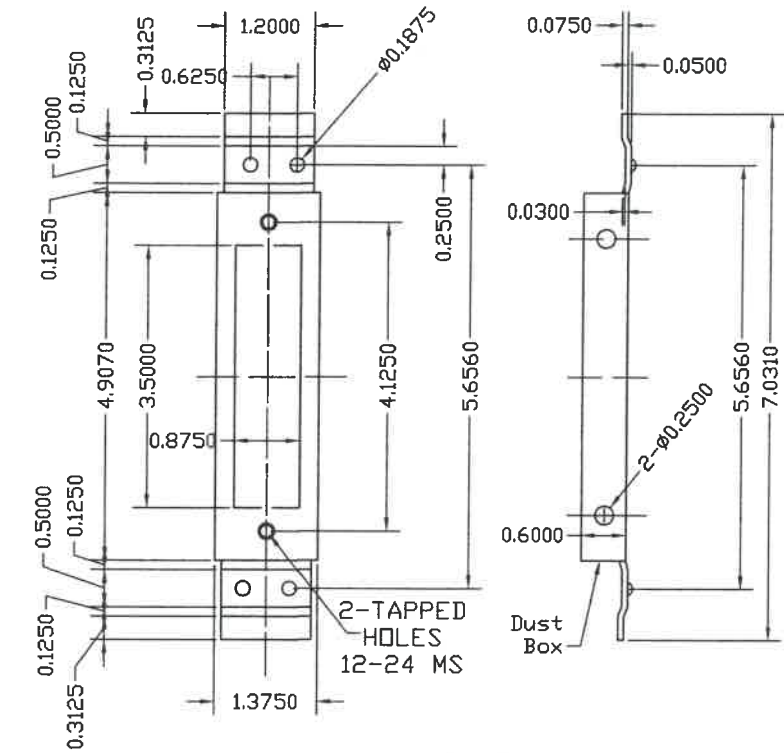
REINFORCING MATERIAL:
GAUGE 12 MINIMUM (0.097 THICK)
GALVANNEAL

**SURFACE STRIKE
REINFORCING
DETAIL #19**



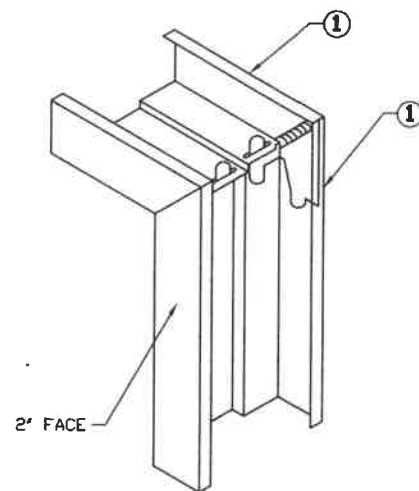
MATERIAL:
GAUGE 10 MINIMUM
GALVANNEAL

**③ ④ 4 1/2" FRAME HINGE
REINFORCING
DETAIL #17**



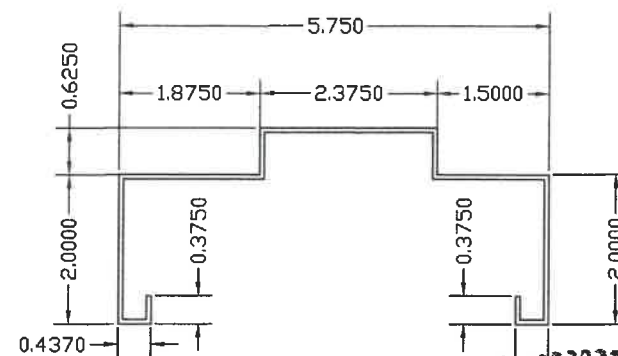
MATERIAL:
GAUGE 12 MINIMUM
GALVANNEAL

**⑤ 4 7/8" STRIKE
REINFORCEMENT FOR FRAME
DETAIL #18**



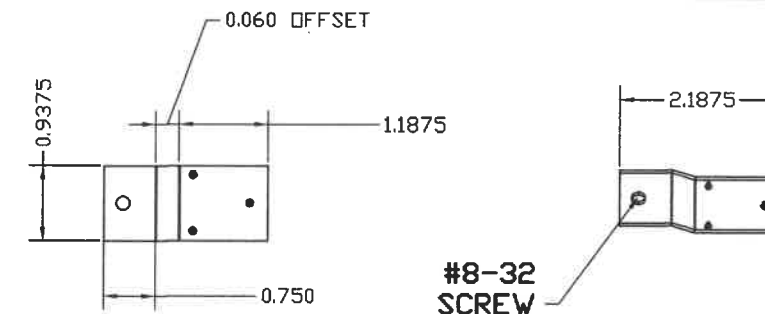
1. DIEMITERED CORNER CONT. WELDED INSIDE FACES & AT RETURNS
2. CAULK COMPLETE INSIDE CORNER WITH GE SILICONE II

**TYPICAL WELDED CORNER
DETAIL #16**



MATERIAL:
GAUGE 16 MINIMUM (0.057)
GALVANNEAL

**① AS 5 3/4" SECTION THROUGH
DETAIL #15**



**⑤A DEAD LOCK STRIKE TAB
14 GA (0.074) MIN**

ATTACHED TO STRIKE JAMB W/
(3) 1/8"Ø PROJECTION WELDS.



P.E. SEAL/SIGNATURE/DATE

WALTER A. TILLIT Jr P.E.
PROFESSIONAL ENGINEER
6355 N.W 36 STREET, STE. 305
VIRGINIA GARDENS, FL 33166
PHONE(305) 871-1530 FAX (305) 871-1531
TEXAS LIC. # 90691
FIRM REGISTRATION # F-13790

TEXAS DEPARTMENT OF INSURANCE - 2018

SERIES LS18 FLUSH OUTSWING COMMERCIAL
STEEL DOOR W/SERIES "AS" STEEL FRAME

DRAWN BY:
M.P.

DAYBAR INDUSTRIES LTD

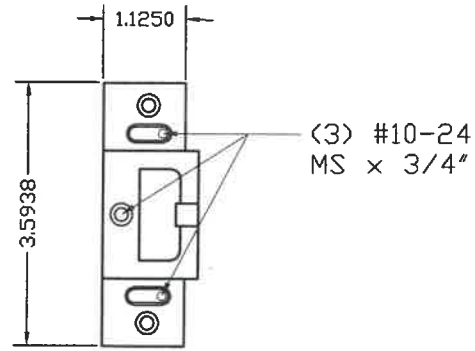
9/30/2021
DATE

50 WEST DRIVE, BRAMPTON,
ON CANADA, L6T 2J4
TEL: 905 625-8000 FAX: 905 625-4204

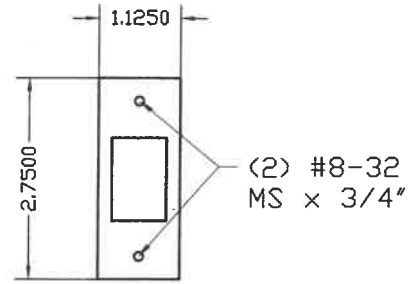
21-128
DRAWING No

REV. No	DESCRIPTION	DATE	REV. No	DESCRIPTION	DATE
1	OLD 17-059	9/30/21	3	-	-
2	-	-	4	-	-

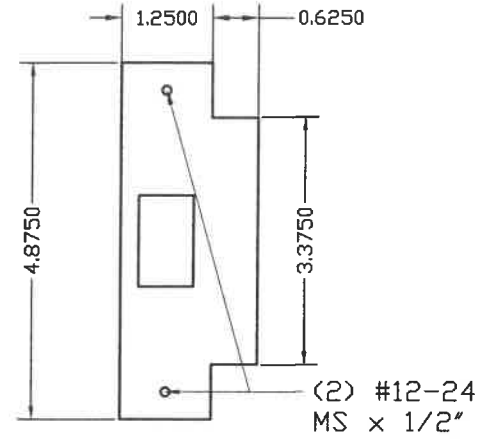
SHEET 3 OF 14



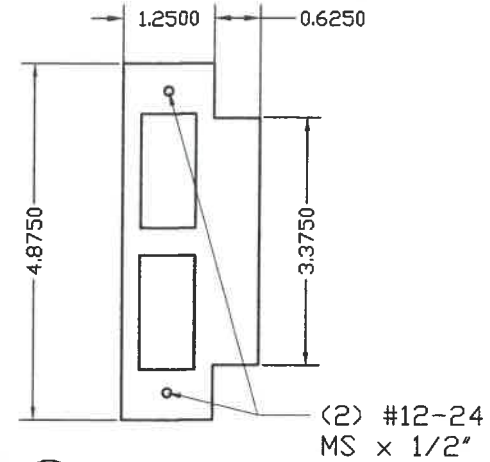
18 STRIKE FOR RIM EXIT DEVICE (11)
 MATERIAL: (0.125") Steel, Painted Finish



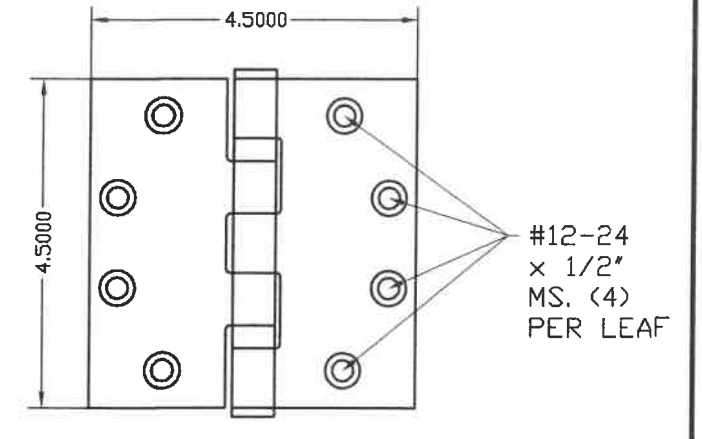
19 STRIKE FOR DEAD BOLT (14)
 MATERIAL: (0.095) Steel, Nickel Finish



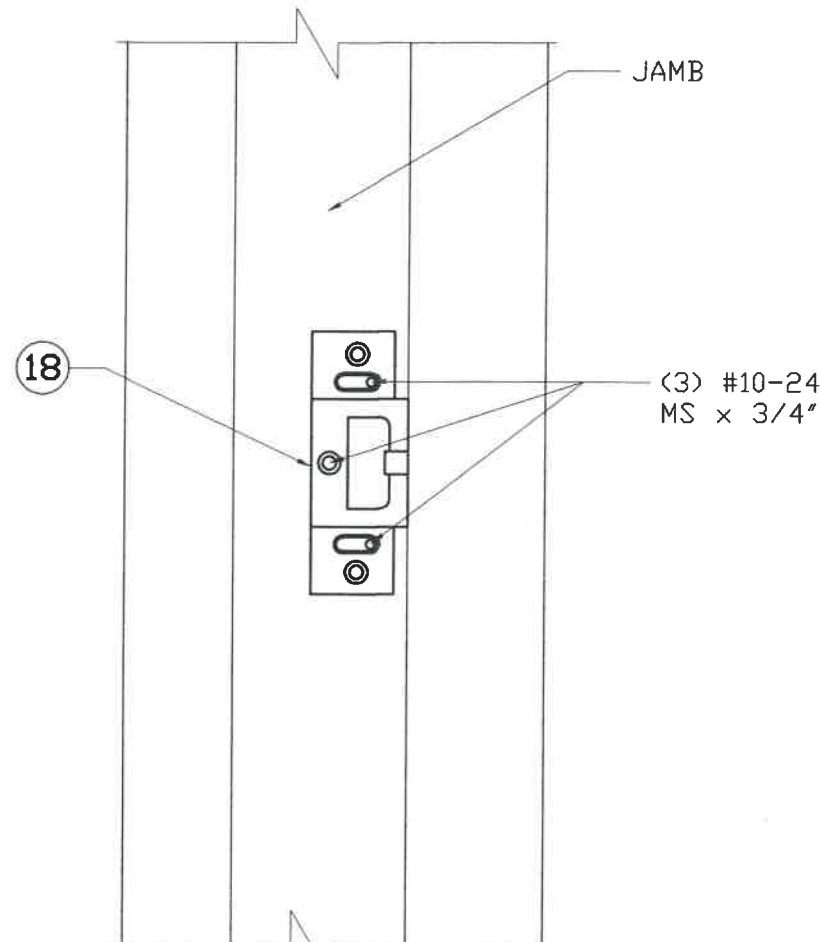
20 STRIKE FOR CYLINDRICAL LOCK (13)
 MATERIAL: (0.095) Steel, Nickel Finish



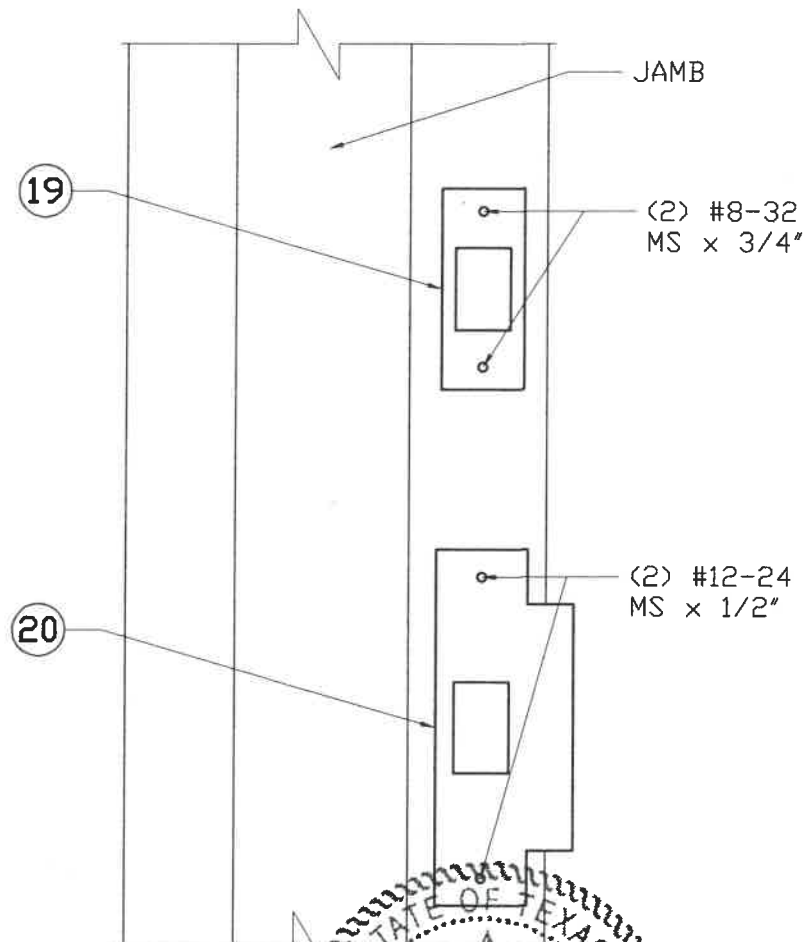
21 STRIKE FOR MORTISE LOCK (12)
 MATERIAL: (0.095) Steel, Nickel Finish



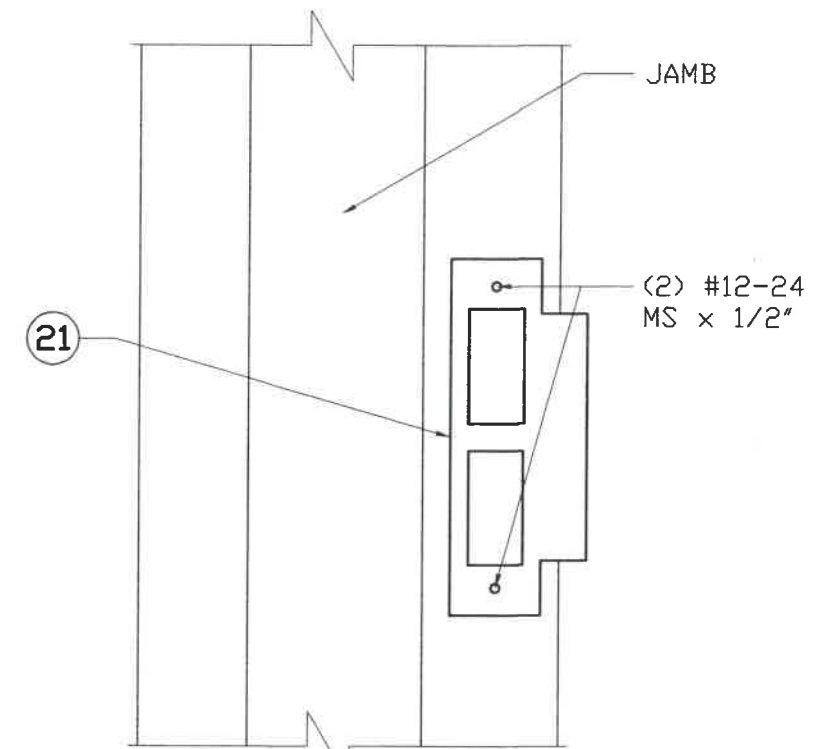
10 HINGE-HAGER
 MATERIAL: 0.134" STEEL, NICKEL FINISH



STRIKE DETAIL ELEVATION
 Rim Exit Device



STRIKE DETAIL ELEVATION
 Latch & Deadbolt



STRIKE DETAIL ELEVATION
 Mortised Device Latch



WALTER A. TILLIT JR.
 P.E. SEAL/SIGNATURE/DATE

WALTER A. TILLIT Jr P.E.
 PROFESSIONAL ENGINEER
 6355 N.W. 36 STREET, STE. 305
 VIRGINIA GARDENS, FL 33166
 PHONE(305) 871-1530 FAX (305) 871-1531
 TEXAS LIC. # 90691
 FIRM REGISTRATION # F-13790

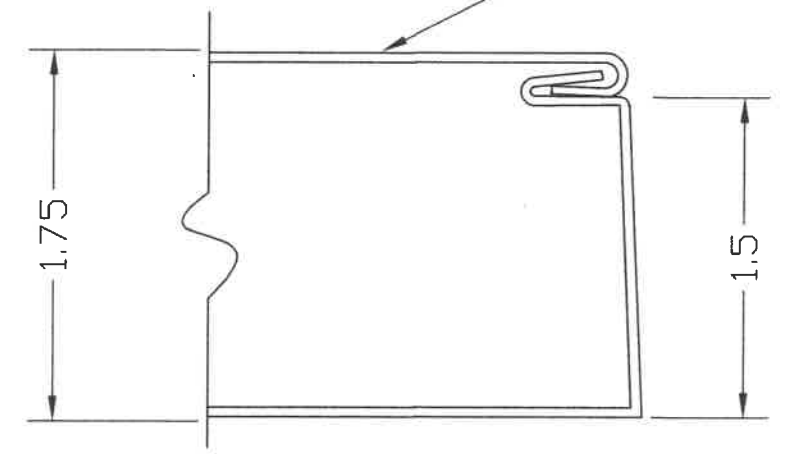
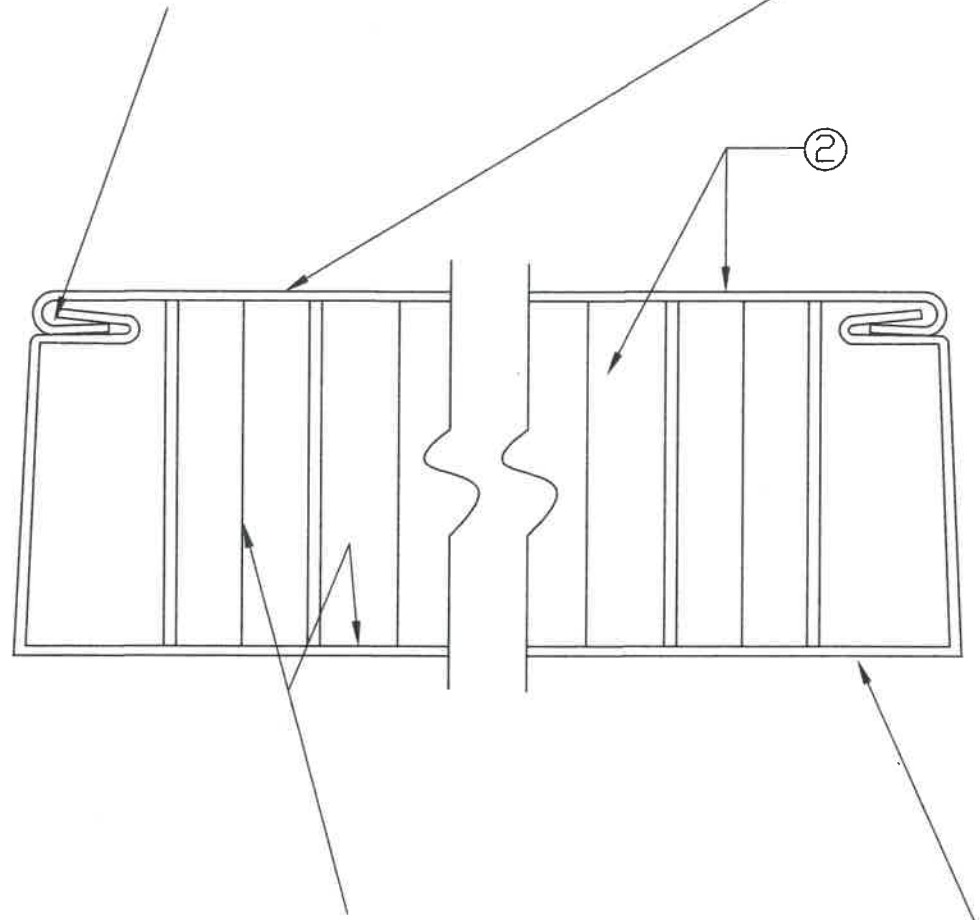
TEXAS DEPARTMENT OF INSURANCE - 2018					
SERIES LS18 FLUSH OUTSWING COMMERCIAL STEEL DOOR W/SERIES "AS" STEEL FRAME				DRAWN BY: M.P.	
DAYBAR INDUSTRIES LTD				9/30/2021 DATE	
50 WEST DRIVE, BRAMPTON, ON CANADA, L6T 2J4 TEL: 905 625-8000 FAX: 905 625-4204				21-128 DRAWING No	
REV. No	DESCRIPTION	DATE	REV. No	DESCRIPTION	DATE
1	OLD 17-059	9/30/21	3	-	-
2	-	-	4	-	-

LOCKSEAM FILLED WITH
HELMIPRENE # C8323-1
ADHESIVE -SEALANT

DOOR BACK OR NARROW SIDE

MATERIAL:

② 18 GAUGE = .045 MINIMUM
GALVANNEAL



BOTH DOOR EDGES
1/8" IN 2" BEVEL

3/4" CELL PAPER HONEYCOMB
BONDED TO FACE SHEET WITH
CONTACT ADHESIVE HELMIBOND # 8320-1

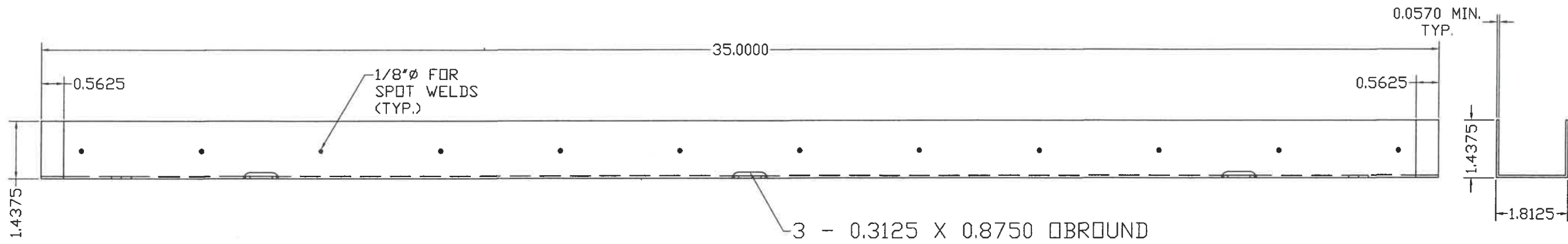
DOOR FRONT OR
WIDE SIDE

**DOOR SECTION THROUGH EDGE SEAM,
DETAIL #6**

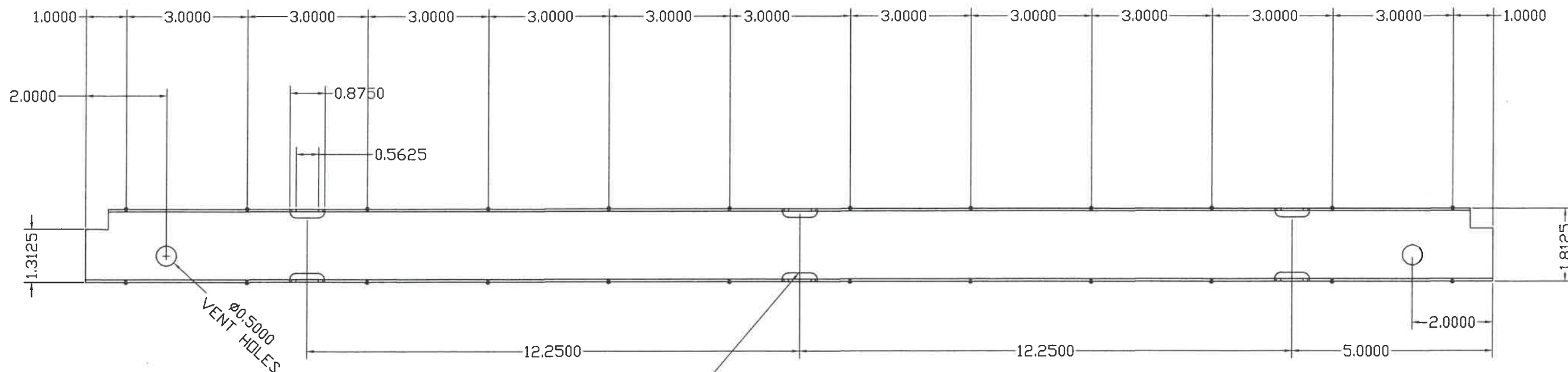
STATE OF TEXAS
WALTER A. TILLIT, JR.
90691
LICENSED PROFESSIONAL ENGINEER
P.E. SEAL/SIGNATURE/DATE

WALTER A. TILLIT Jr P.E.
PROFESSIONAL ENGINEER
6355 N.W 36 STREET, STE. 305
VIRGINIA GARDENS, FL 33166
PHONE(305) 871-1530 FAX (305) 871-1531
TEXAS LIC. # 90691
FIRM REGISTRATION # F-13790

TEXAS DEPARTMENT OF INSURANCE - 2018					
SERIES LS18 FLUSH OUTSWING COMMERCIAL STEEL DOOR W/SERIES "AS" STEEL FRAME				DRAWN BY: M.P.	
DAYBAR INDUSTRIES LTD 50 WEST DRIVE, BRAMPTON, ON CANADA, L6T 2J4 TEL: 905 625-8000 FAX: 905 625-4204				9/30/2021 DATE	
				21-128 DRAWING No	
REV. No	DESCRIPTION	DATE	REV. No	DESCRIPTION	DATE
1	OLD 17-059	9/30/21	3	-	-
2	-	-	4	-	-



ELEVATION



PLAN

MATERIAL:
16 GAUGE (0.057) MINIMUM
GALVANNEAL

SURFACE CLOSER
FASTENING SLOTS

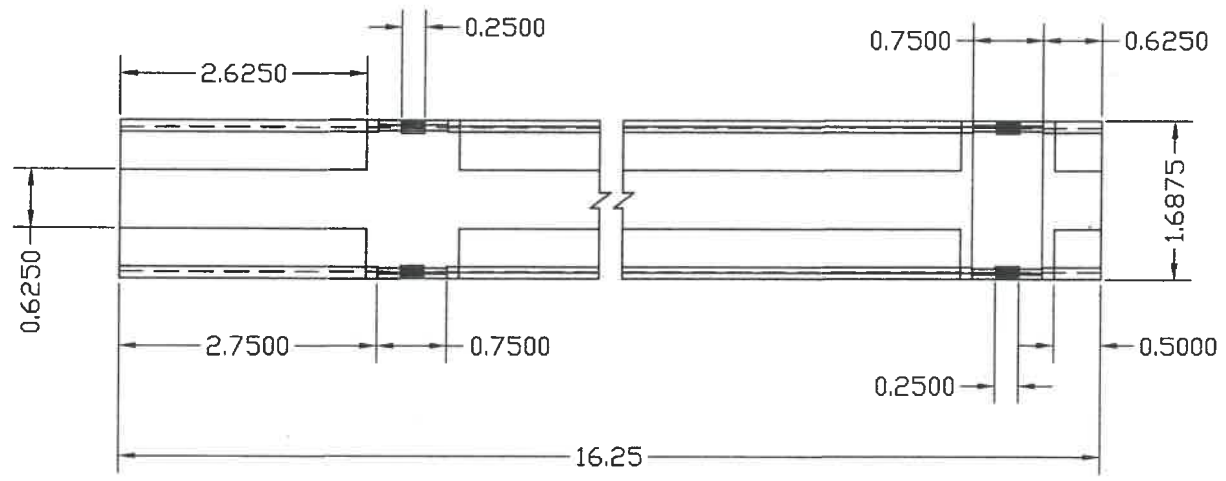
DOOR TOP AND BOTTOM TYPICAL END CHANNEL

DETAIL #12

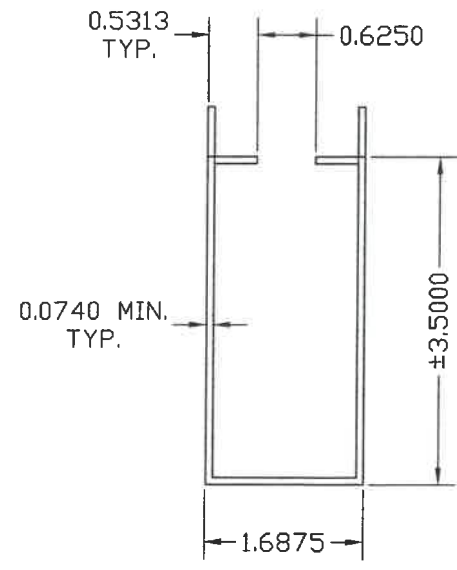
STATE OF FLORIDA
WALTER A. TILLIT, JR.
90691
LICENSED PROFESSIONAL ENGINEER
Walter Tillit Jr.
P.E. SEAL/SIGNATURE/DATE

WALTER A. TILLIT Jr P.E.
PROFESSIONAL ENGINEER
6355 N.W. 36 STREET, STE. 305
VIRGINIA GARDENS, FL 33166
PHONE(305) 871-1530 FAX (305) 871-1531
TEXAS LIC. # 90691
FIRM REGISTRATION # F-13790

TEXAS DEPARTMENT OF INSURANCE - 2018					
SERIES LS18 FLUSH OUTSWING COMMERCIAL STEEL DOOR W/SERIES "AS" STEEL FRAME				DRAWN BY: M.P.	
DAYBAR INDUSTRIES LTD				9/30/2021 DATE	
50 WEST DRIVE, BRAMPTON, ON CANADA, L6T 2J4 TEL: 905 625-8000 FAX: 905 625-4204				21-128 DRAWING No	
REV. No	DESCRIPTION	DATE	REV. No	DESCRIPTION	DATE
1	OLD 17-059	9/30/21	3	-	-
2	-	-	4	-	-

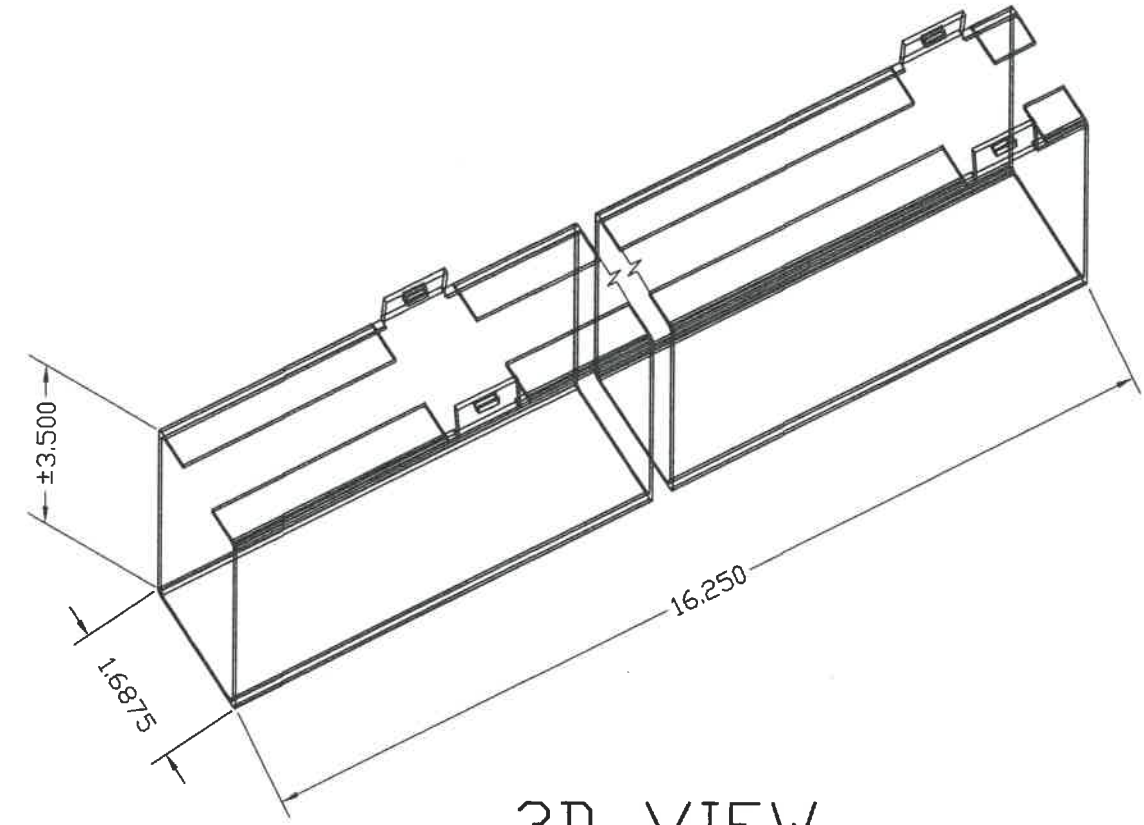


PLAN



SECTION

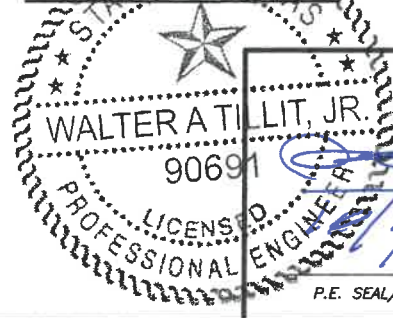
MATERIAL:
14 GAUGE (0.074)
MINIMUM GALVANNEAL



3D VIEW

DOOR SURFACE CLOSER REINFORCING

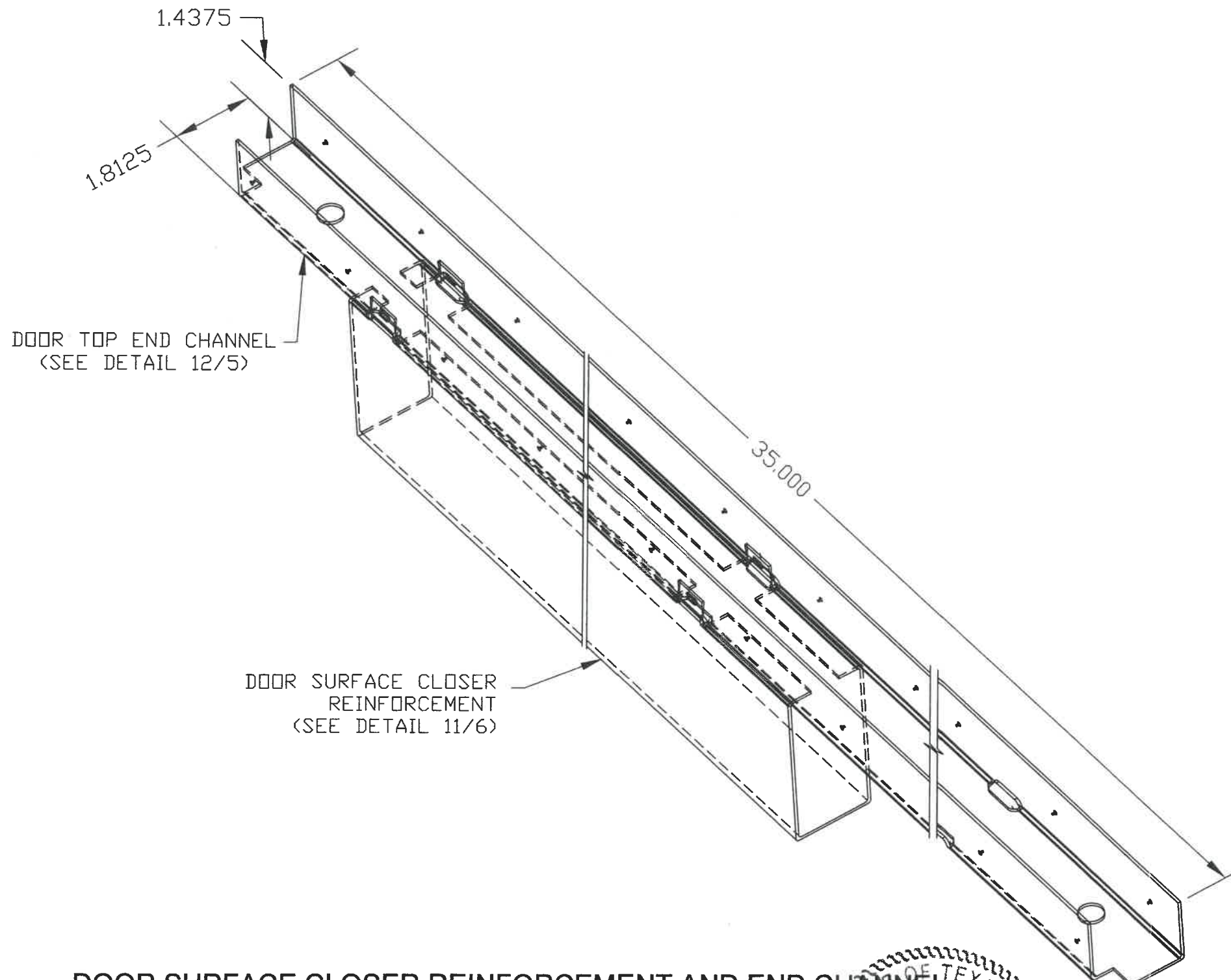
DETAIL #11



Walter A. Tillit, Jr.
P.E. SEAL/SIGNATURE/DATE

WALTER A. TILLIT Jr P.E.
PROFESSIONAL ENGINEER
6355 N.W 36 STREET, STE. 305
VIRGINIA GARDENS, FL 33166
PHONE(305) 871-1530 FAX (305) 871-1531
TEXAS LIC. # 90691
FIRM REGISTRATION # F-13790

TEXAS DEPARTMENT OF INSURANCE - 2018					
SERIES LS18 FLUSH OUTSWING COMMERCIAL STEEL DOOR W/SERIES "AS" STEEL FRAME				DRAWN BY: M.P.	
DAYBAR INDUSTRIES LTD 50 WEST DRIVE, BRAMPTON, ON CANADA, L6T 2J4 TEL: 905 625-8000 FAX: 905 625-4204				9/30/2021 DATE	
				21-128 DRAWING No	
REV. No	DESCRIPTION	DATE	REV. No	DESCRIPTION	DATE
1	OLD 17-059	9/30/21	3	-	-
2	-	-	4	-	-



**DOOR SURFACE CLOSER REINFORCEMENT AND END CHANNEL
ASSEMBLY DETAIL #13**



Walter A. Tillit, Jr.
P.E. SEAL/SIGNATURE/DATE

WALTER A. TILLIT Jr P.E.
PROFESSIONAL ENGINEER
6355 N.W 36 STREET, STE. 305
VIRGINIA GARDENS, FL 33166
PHONE(305) 871-1530 FAX (305) 871-1531
TEXAS LIC. # 90691
FIRM REGISTRATION # F-13790

TEXAS DEPARTMENT OF INSURANCE - 2018

SERIES LS18 FLUSH OUTSWING COMMERCIAL
STEEL DOOR W/SERIES "AS" STEEL FRAME

DRAWN BY:
M.P.

DAYBAR INDUSTRIES LTD

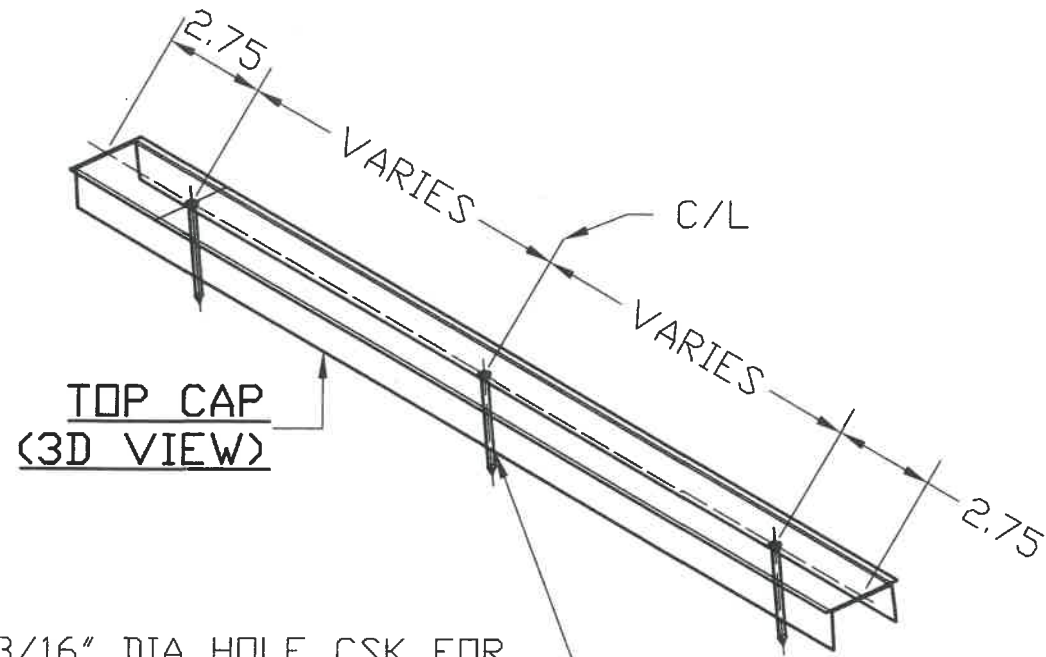
9/30/2021
DATE

50 WEST DRIVE, BRAMPTON,
ON CANADA, L6T 2J4
TEL: 905 625-8000 FAX: 905 625-4204

21-128
DRAWING No

REV. No	DESCRIPTION	DATE	REV. No	DESCRIPTION	DATE
1	OLD 17-059	9/30/21	3	-	-
2	-	-	4	-	-

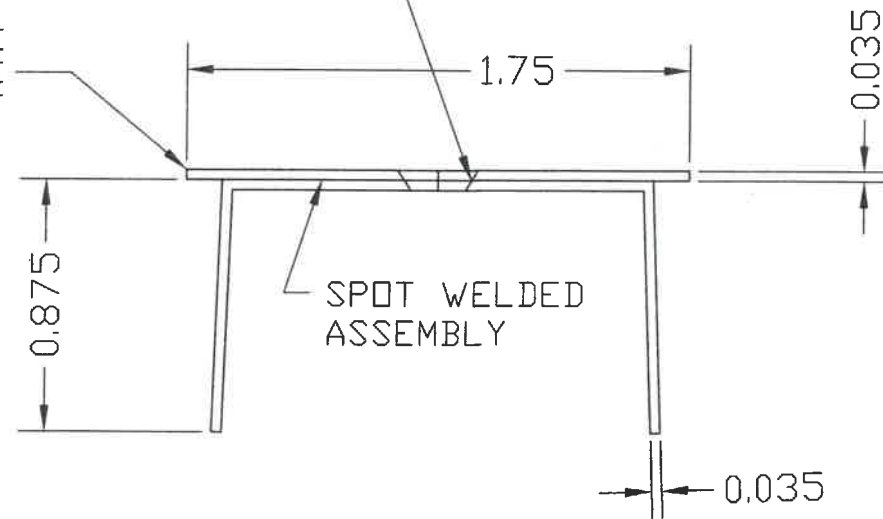
SHEET 7 OF 14



**TOP CAP
(3D VIEW)**

3/16" DIA HOLE CSK FOR
#10x2" SHEET METAL SCREW

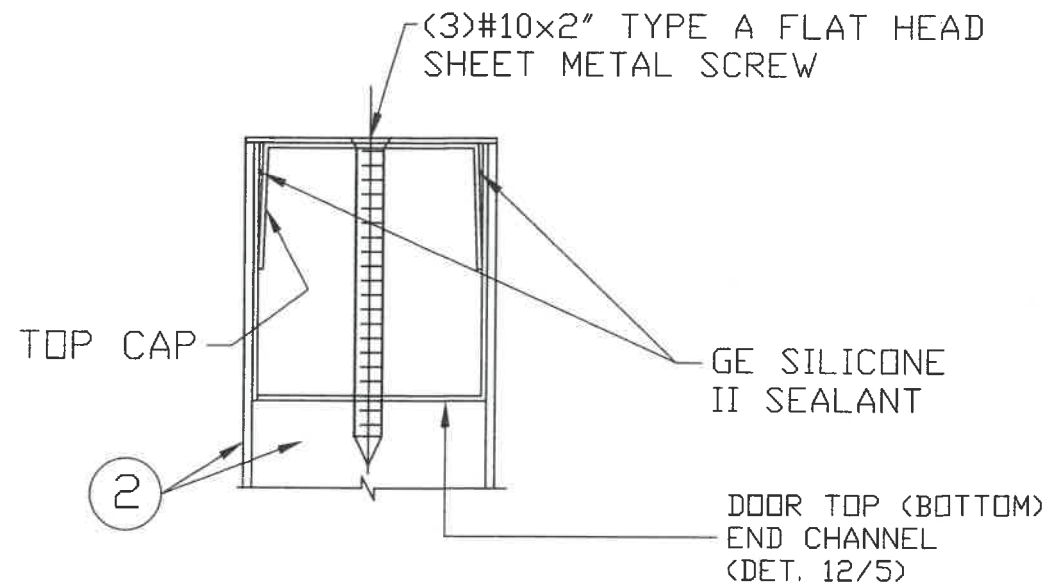
CONT. 20 GAGE
GALVANNEAL PLATE
REINFORCEMENT



TOP CAP (SECTION)

NOTE:
MATERIAL 20 GAUGE
(0.035) MINIMUM
GALVANNEAL

INSTALLATION:
APPLY BEAD OF GE SILICONE II SEALANT
TO INSIDE-TOP EDGE OF DOOR.
PRESS FIT TOP CAP INTO DOOR
TOP CHANNEL & SCREW FASTEN



**DOOR ASSEMBLY
AT TOP EDGE**

PAGE #8 DOOR STEEL TOP CAP

DETAIL #14



WALTER A. TILLIT Jr P.E.
PROFESSIONAL ENGINEER
6355 N.W 36 STREET, STE. 305
VIRGINIA GARDENS, FL 33166
PHONE(305) 871-1530 FAX (305) 871-1531
TEXAS LIC. # 90691
FIRM REGISTRATION # F-13790

TEXAS DEPARTMENT OF INSURANCE - 2018

SERIES LS18 FLUSH OUTSWING COMMERCIAL
STEEL DOOR W/SERIES "AS" STEEL FRAME

DRAWN BY:
M.P.

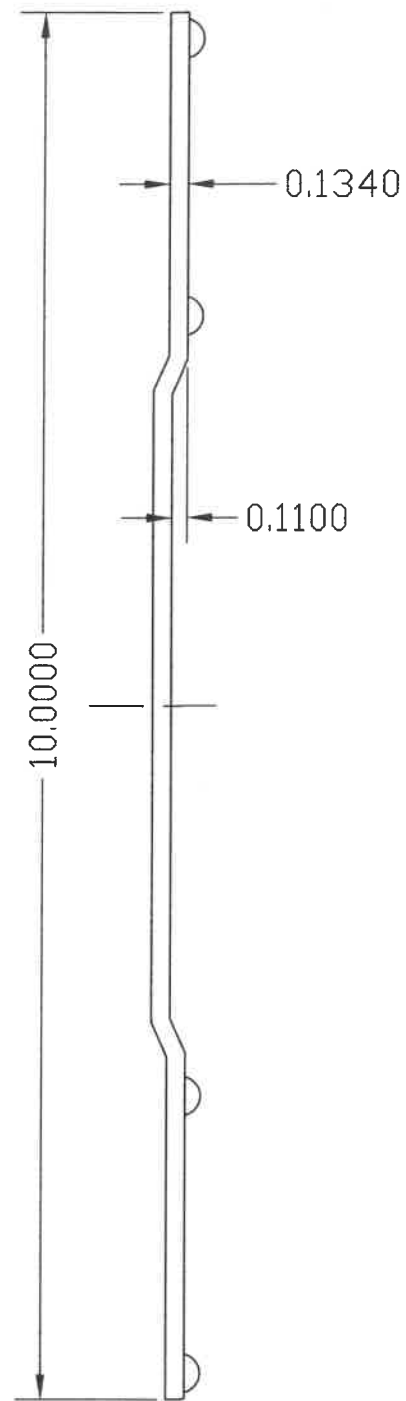
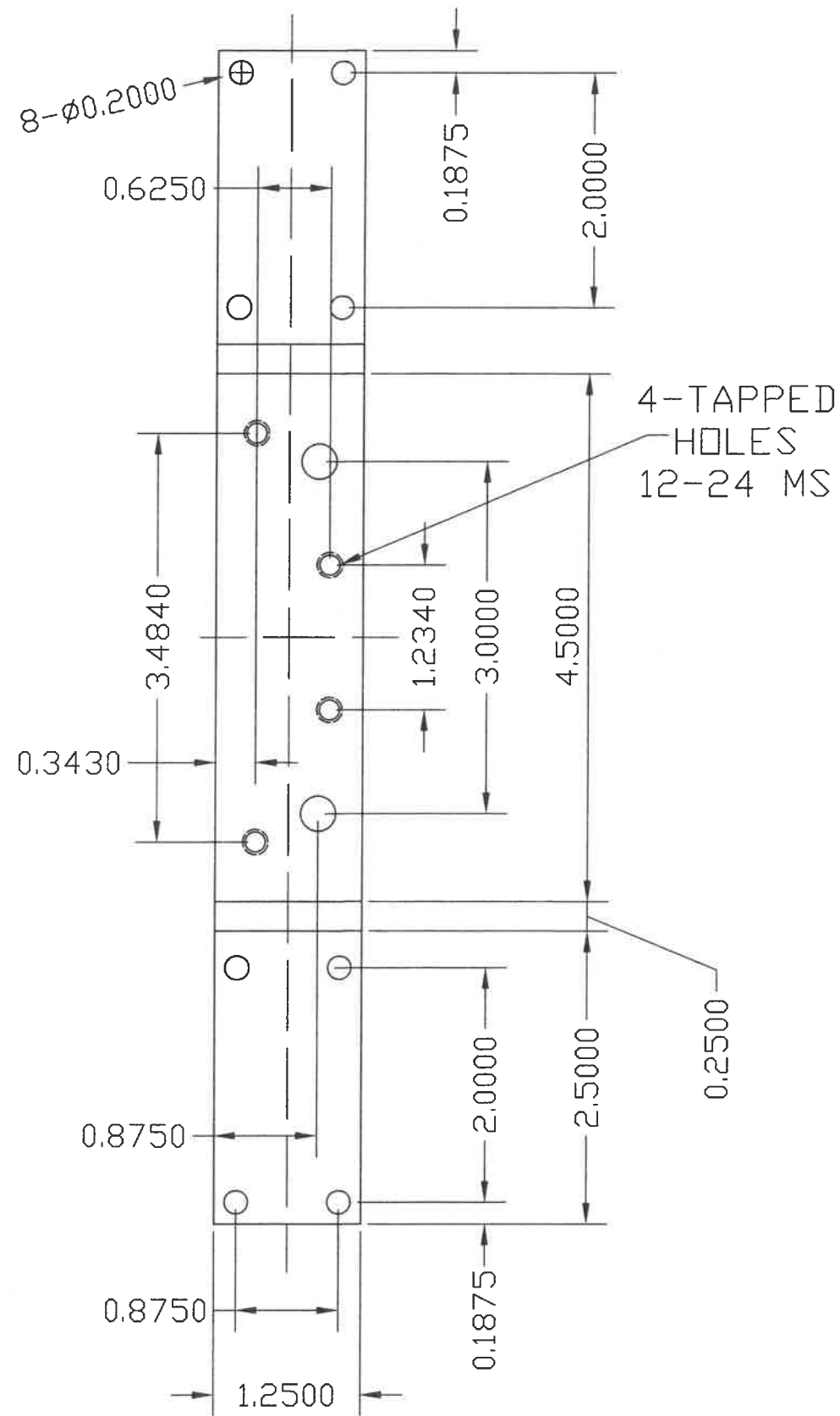
DAYBAR INDUSTRIES LTD

9/30/2021
DATE

50 WEST DRIVE, BRAMPTON,
ON CANADA, L7J 2J4
TEL: 905 625-8000 FAX: 905 625-4204

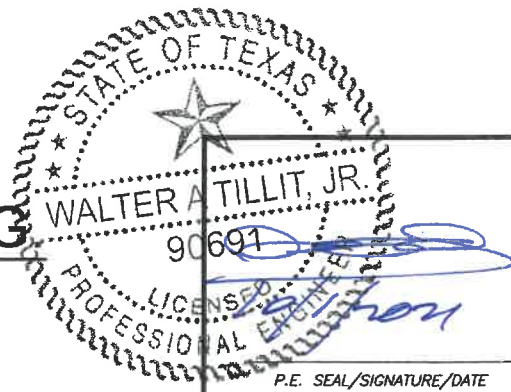
21-128
DRAWING No

REV. No	DESCRIPTION	DATE	REV. No	DESCRIPTION	DATE
1	OLD 17-059	9/30/21	3	-	-
2	-	-	4	-	-



MATERIAL:
GAUGE 10 MINIMUM
GALVANNEAL

DOOR HINGE REINFORCING



WALTER A. TILLIT Jr P.E.
PROFESSIONAL ENGINEER
6355 N.W 36 STREET, STE. 305
VIRGINIA GARDENS, FL 33166
PHONE(305) 871-1530 FAX (305) 871-1531
TEXAS LIC. # 90691
FIRM REGISTRATION # F-13790

TEXAS DEPARTMENT OF INSURANCE - 2018

SERIES LS18 FLUSH OUTSWING COMMERCIAL
STEEL DOOR W/SERIES "AS" STEEL FRAME

DRAWN BY:
M.P.

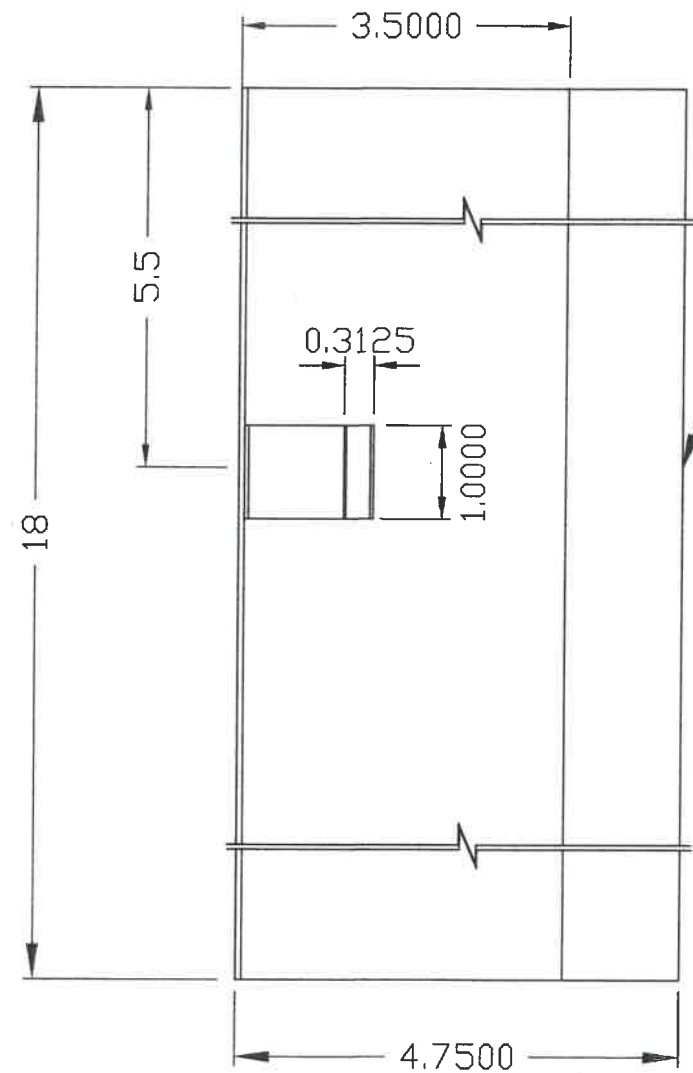
DAYBAR INDUSTRIES LTD

9/30/2021
DATE

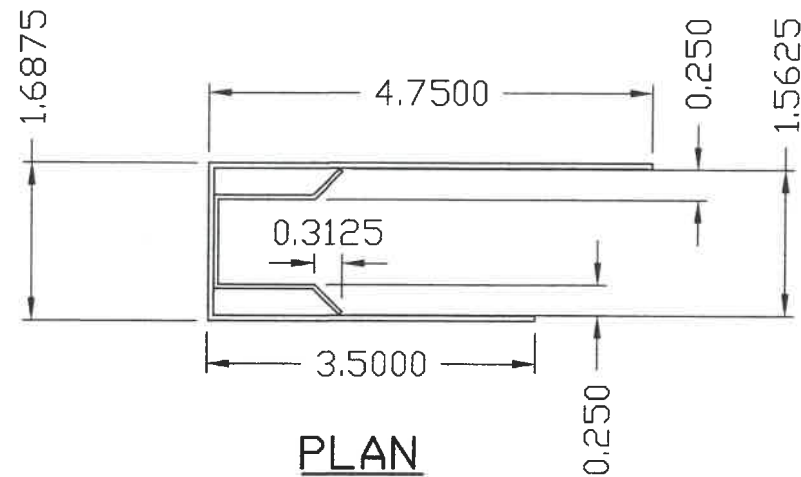
50 WEST DRIVE, BRAMPTON,
ON CANADA, L6T 2J4
TEL: 905 625-8000 FAX: 905 625-4204

21-128
DRAWING No

REV. No	DESCRIPTION	DATE	REV. No	DESCRIPTION	DATE
1	OLD 17-059	9/30/21	3	-	-
2	-	-	4	-	-



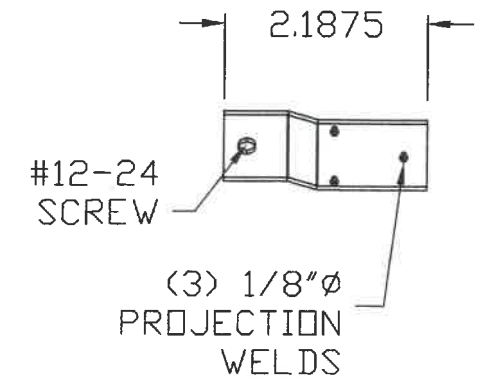
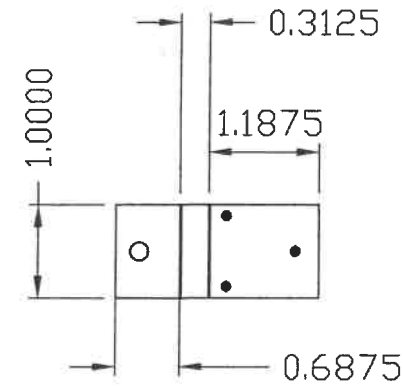
ELEVATION



PLAN

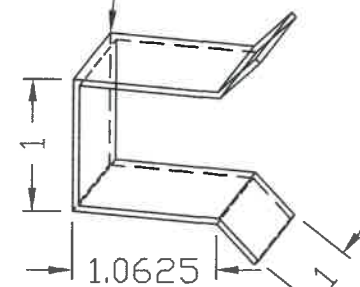
GAGE 14 (0.074) MINIMUM
RP REINFORCING SAME AS #86.
LESS LOCK CLIP & MOUNTING
TABS

MATERIAL: ALL GALVANNEAL

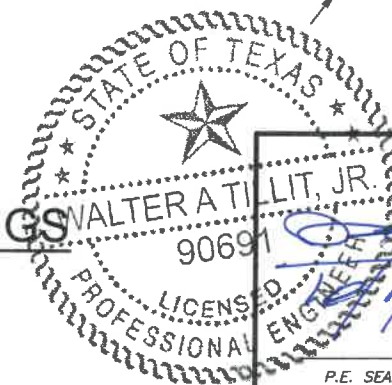


DOOR EDGE MOUNTING TAB
14 GA (0.074) MIN

LOCK CLIP-18GA
(0.045) MIN.
ONLY VALID FOR
ASSEMBLY #3



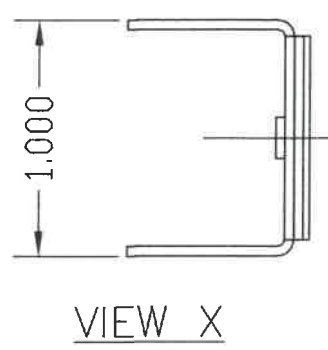
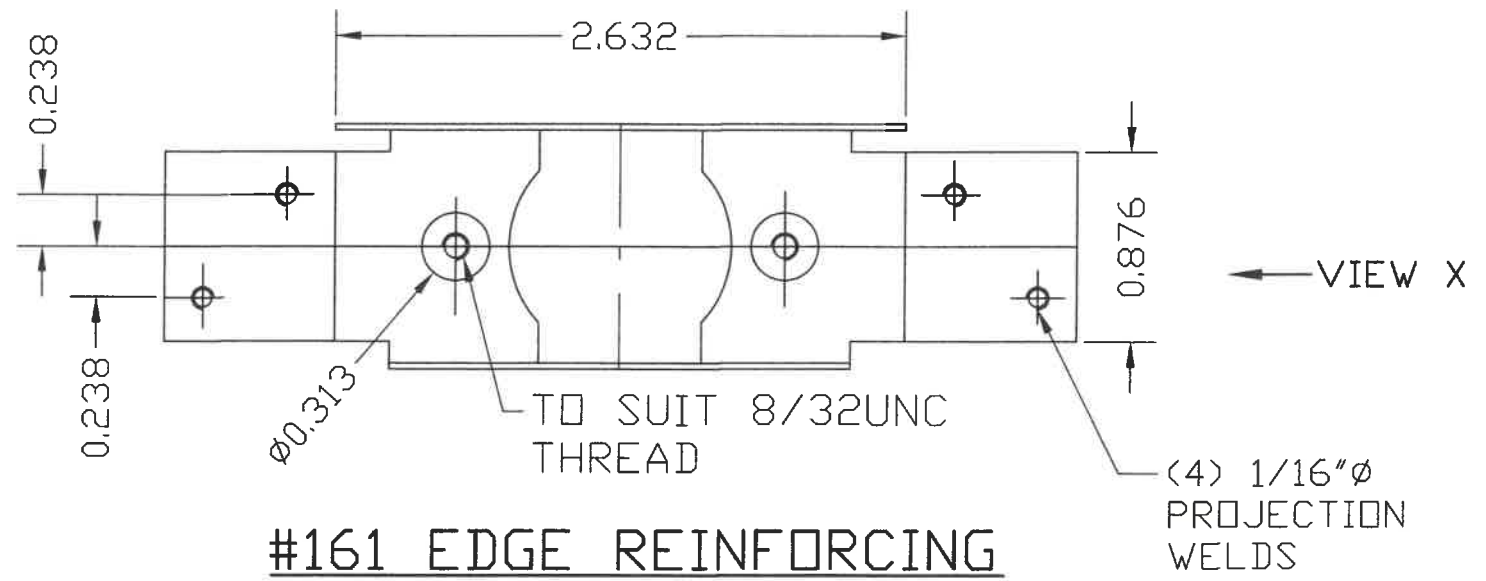
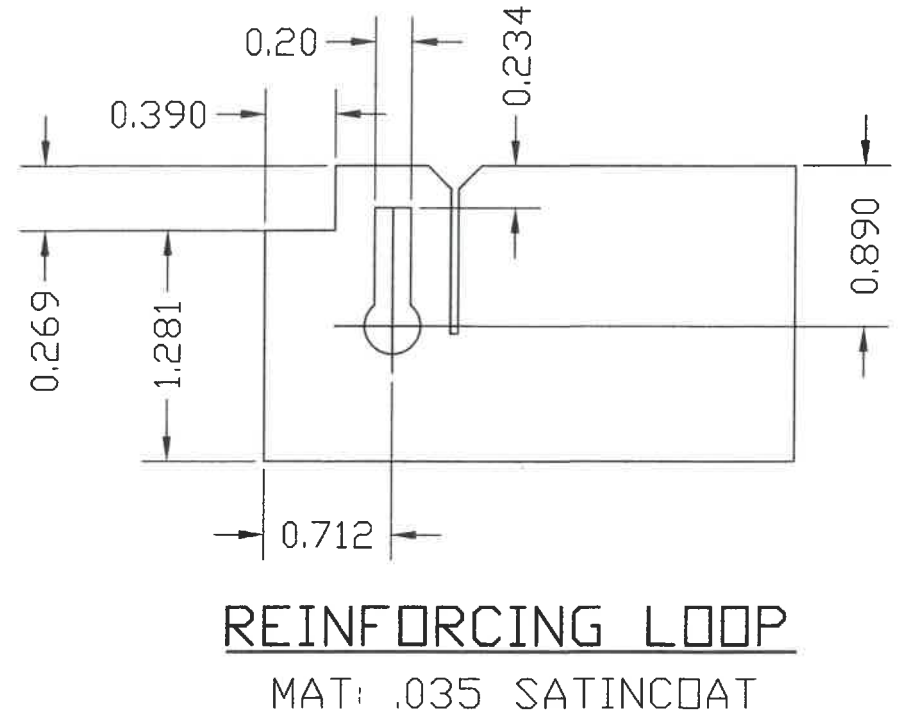
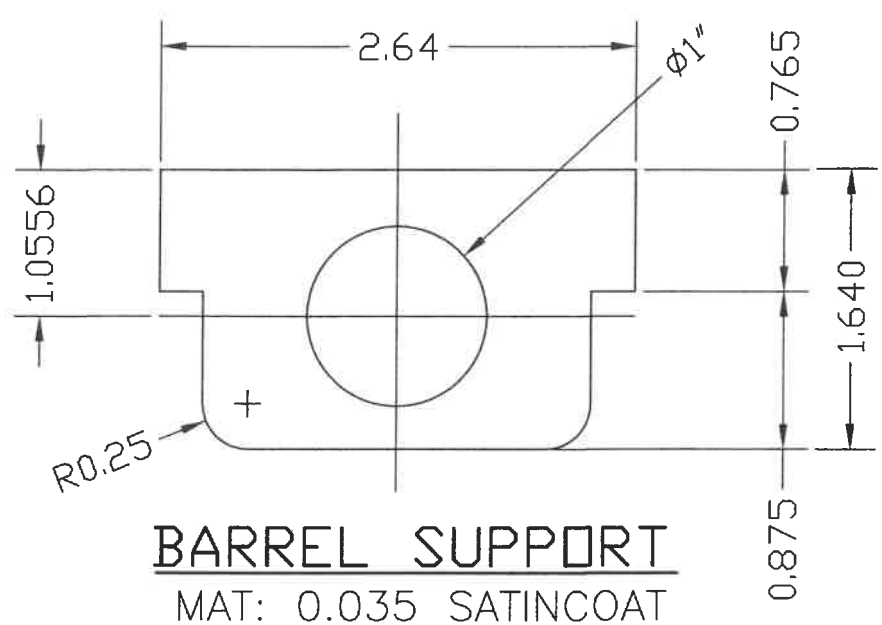
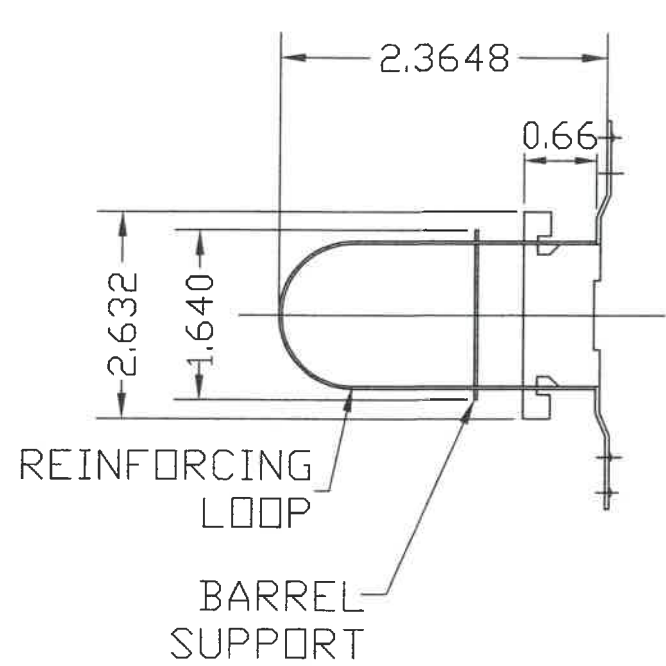
ANSI #A115.1 #86 MORTISE LOCK, RP REINFORCINGS
DETAIL #9



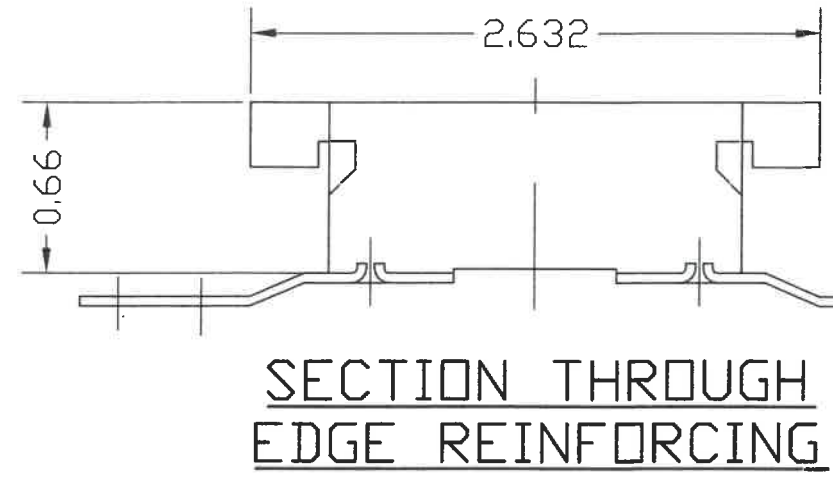
Walter A. Tillit, Jr.
P.E. SEAL/SIGNATURE/DATE

WALTER A. TILLIT Jr P.E.
PROFESSIONAL ENGINEER
6355 N.W 36 STREET, STE. 305
VIRGINIA GARDENS, FL 33166
PHONE(305) 871-1530 FAX (305) 871-1531
TEXAS LIC. # 90691
FIRM REGISTRATION # F-13790

TEXAS DEPARTMENT OF INSURANCE - 2018					
SERIES LS18 FLUSH OUTSWING COMMERCIAL STEEL DOOR W/SERIES "AS" STEEL FRAME				DRAWN BY: M.P.	
DAYBAR INDUSTRIES LTD				9/30/2021 DATE	
50 WEST DRIVE, BRAMPTON, ON CANADA, L6T 2J4 TEL: 905 625-8000 FAX: 905 625-4204				21-128 DRAWING No	
REV. No	DESCRIPTION	DATE	REV. No	DESCRIPTION	DATE
1	OLD 17-058	8/30/21	3	-	-
2	-	-	4	-	-



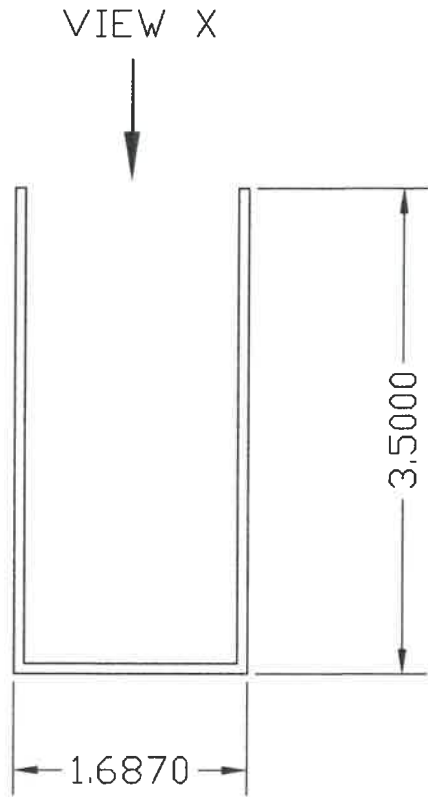
**#161 LOCK, REINFORCINGS
DETAIL #8**



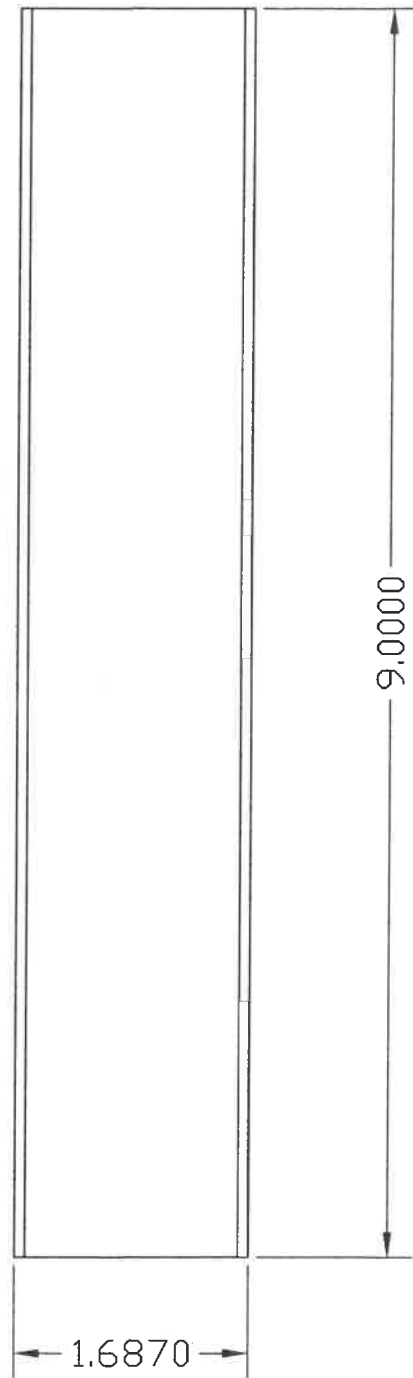
WALTER A. TILLIT, JR.
90691
P.E. SEAL/SIGNATURE/DATE

WALTER A. TILLIT Jr P.E.
PROFESSIONAL ENGINEER
6355 N.W 36 STREET, STE. 305
VIRGINIA GARDENS, FL 33166
PHONE(305) 871-1530 FAX (305) 871-1531
TEXAS LIC. # 90691
FIRM REGISTRATION # F-13790

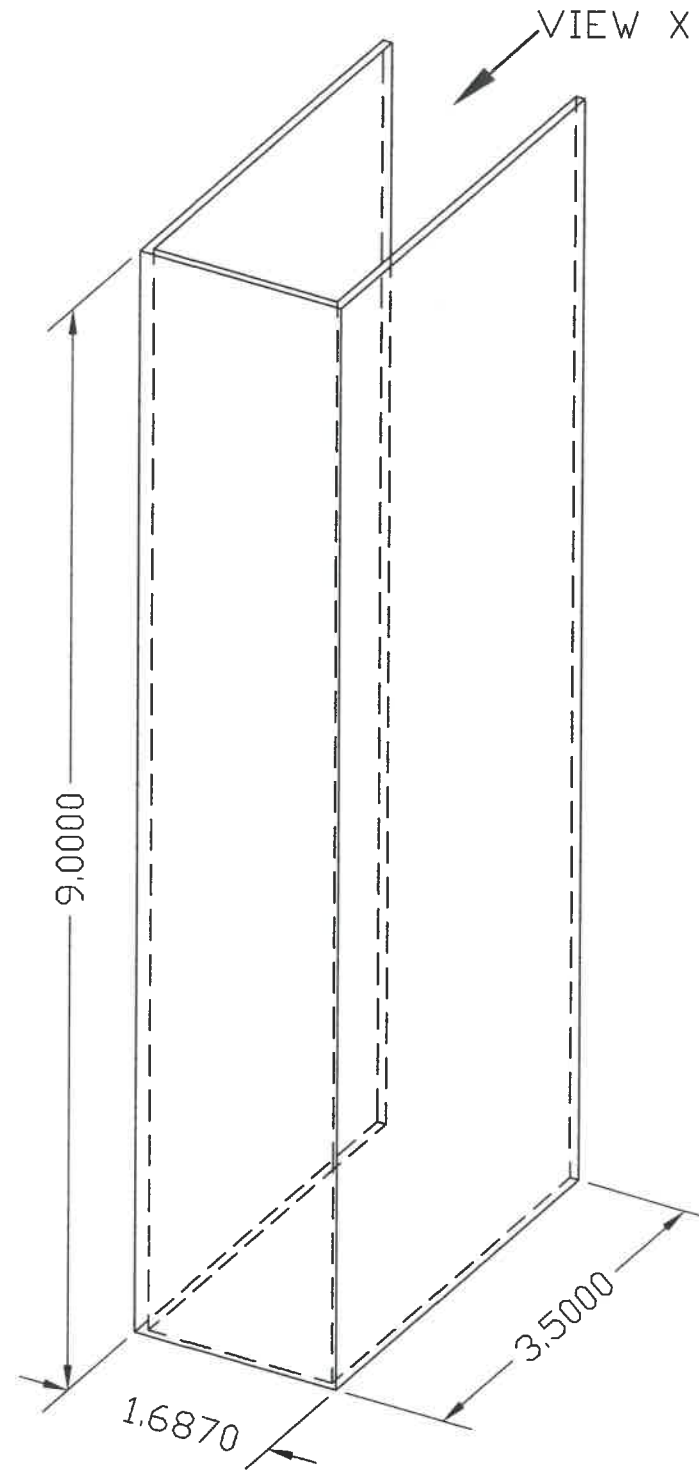
TEXAS DEPARTMENT OF INSURANCE - 2018					
SERIES LS18 FLUSH OUTSWING COMMERCIAL STEEL DOOR W/SERIES "AS" STEEL FRAME				DRAWN BY: M.P.	
DAYBAR INDUSTRIES LTD				9/30/2021 DATE	
50 WEST DRIVE, BRAMPTON, ON CANADA, L6T 2J4 TEL: 905 625-8000 FAX: 905 625-4204				21-128 DRAWING No	
REV. No	DESCRIPTION	DATE	REV. No	DESCRIPTION	DATE
1	OLD 17-059	9/30/21	3	-	-
2	-	-	4	-	-



PLAN



VIEW X



3D VIEW

MATERIAL:
 14 GAUGE (0.074) MINIMUM
 GALVANNEAL, GLUED TO
 DOOR AT HEAD & SILL
 USING HEMILBOND 8320-1
 CONTACT ADHESIVE.

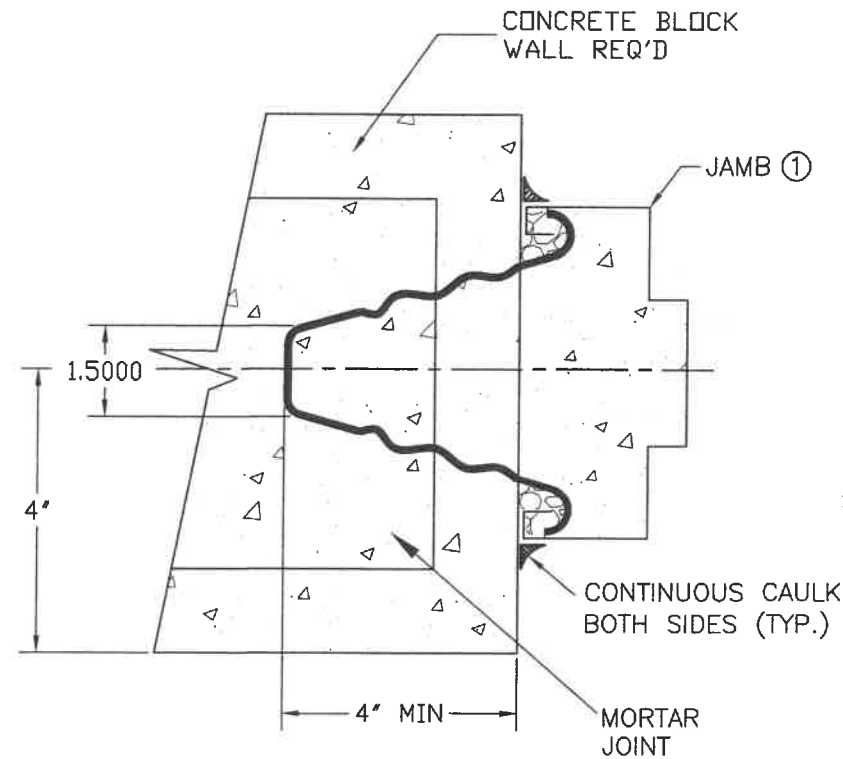
PAGE #12 RIM PANIC SURFACE BOLT REINFORCINGS
DETAIL #10



[Signature]
 P.E. SEAL/SIGNATURE/DATE

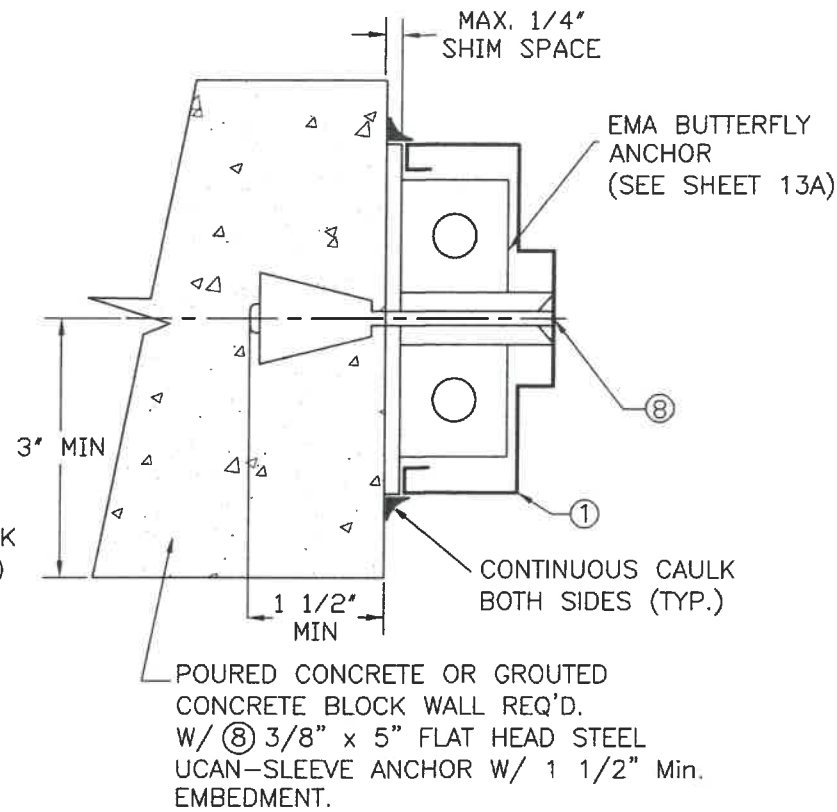
WALTER A. TILLIT Jr P.E.
 PROFESSIONAL ENGINEER
 6355 N.W 36 STREET, STE. 305
 VIRGINIA GARDENS, FL 33166
 PHONE(305) 871-1530 FAX (305) 871-1531
 TEXAS LIC. # 90691
 FIRM REGISTRATION # F-13790

TEXAS DEPARTMENT OF INSURANCE - 2018					
SERIES LS18 FLUSH OUTSWING COMMERCIAL STEEL DOOR W/SERIES "AS" STEEL FRAME				DRAWN BY: M.P.	
DAYBAR INDUSTRIES LTD				9/30/2021 DATE	
50 WEST DRIVE, BRAMPTON, ON CANADA, L6T 2J4 TEL: 905 625-8000 FAX: 905 625-4204				21-128 DRAWING No	
REV. No	DESCRIPTION	DATE	REV. No	DESCRIPTION	DATE
1	OLD 17-059	9/30/21	3	-	-
2	-	-	4	-	-

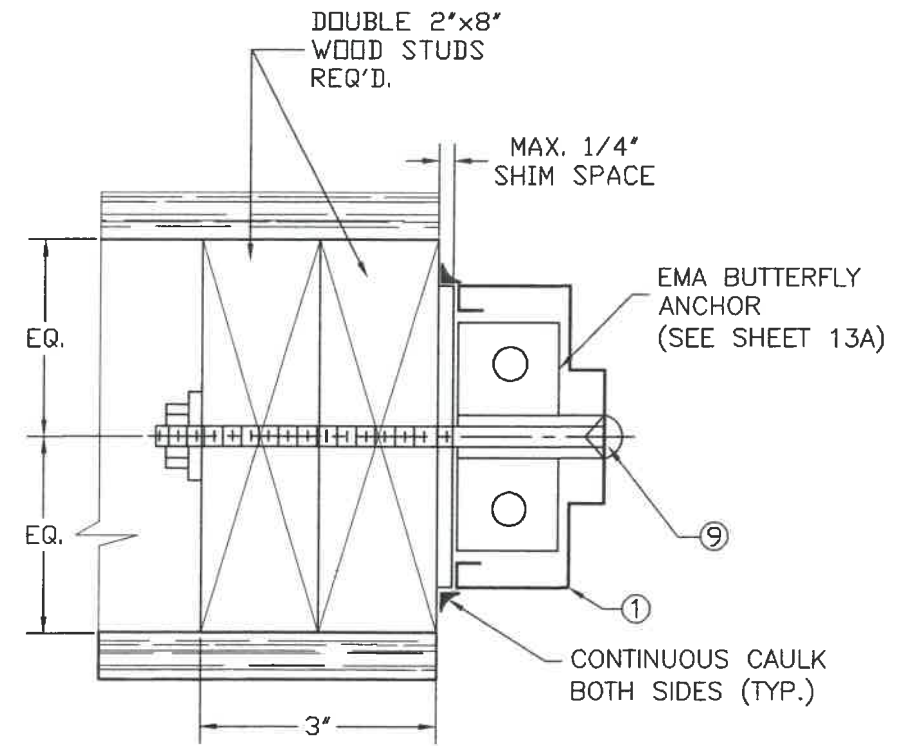


⑥ MASONRY WIRE ANCHORS (0.157" DIA, 9 1/2" LONG) IN HORIZ. MORTAR JOINTS; FILL JAMBS ① SOLID WITH MORTAR "DAYBAR # PT1-001"

WIRE ANCHOR DETAIL #21

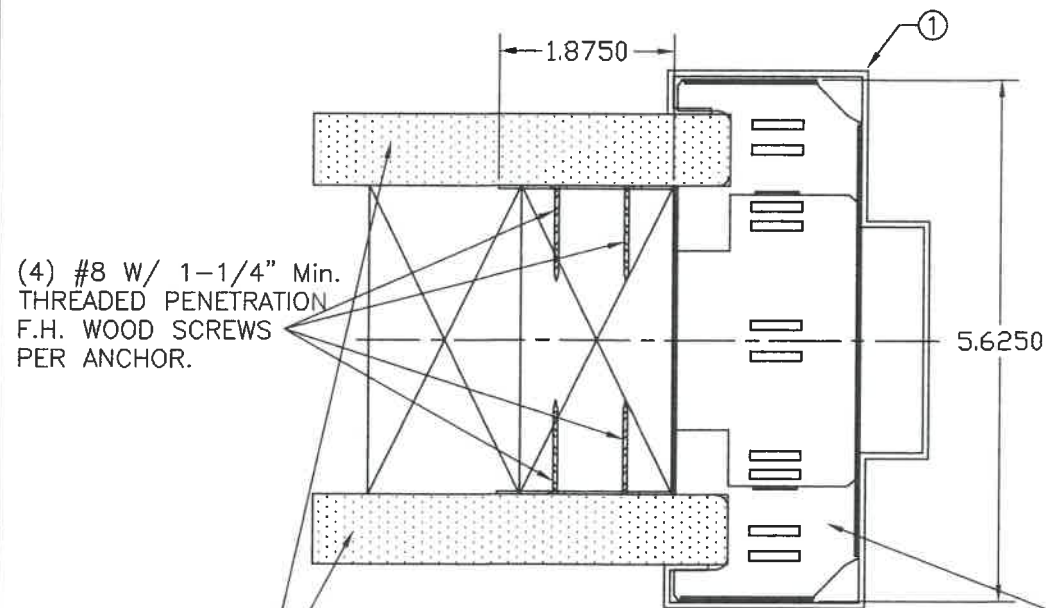


(E.M.A.) EXISTING MASONRY ANCHOR DETAIL #22



WOOD BUCK (MIN. 2"x 8" NOMINAL)
 (8) 3/8"-16 X 6" STEEL CARRIAGE BOLT C/W NUT AND WASHER

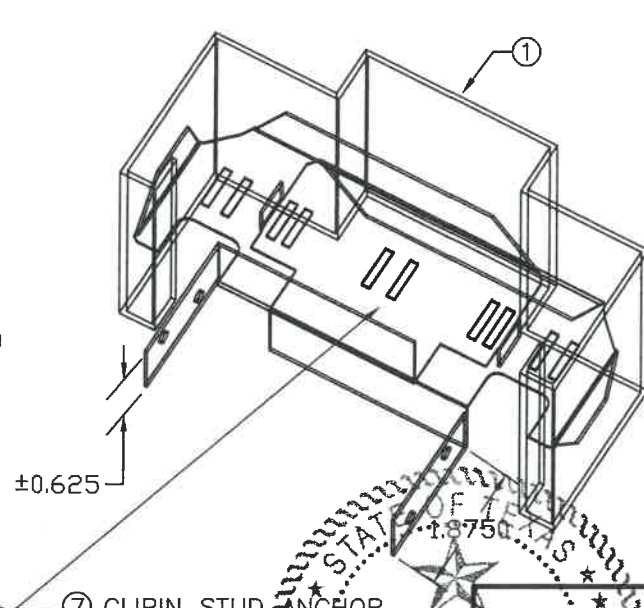
(E.M.A.) EXISTING WOOD BUCK ANCHOR OPTION FOR DETAIL #22



DAYBAR PART # PT1-004

⑦ 2 PIECE COMBINATION STUD ANCHOR DETAIL #20

1/2" Min. GYPSUM WALL BOARD OR PLYWOOD SHEATHING (TYP.)



⑦ CLIPIN STUD ANCHOR MATERIAL GAUGE 20 (0.035) GALVANNEAL

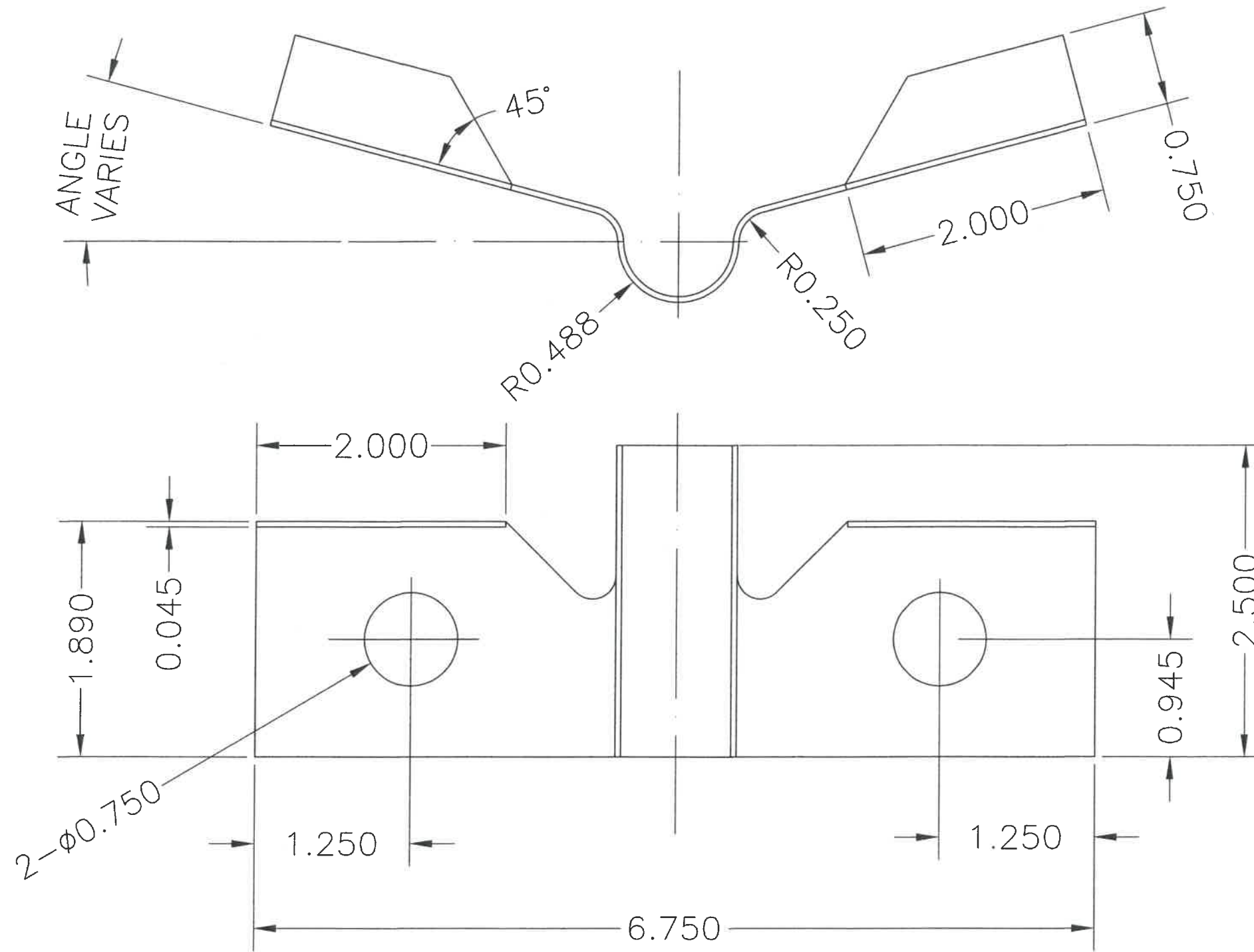
WALTER A. TILLIT, JR.
 90691
 P.E. SEAL/SIGNATURE/DATE

NOTES:

3 ANCHORS REQUIRED PER JAMB, 6 PER FRAME FOR DETAILS #20 & 21.
 4 ANCHORS REQUIRED PER JAMB, 8 PER FRAME FOR DETAIL #22.

WALTER A. TILLIT Jr P.E.
 PROFESSIONAL ENGINEER
 6355 N.W 36 STREET, STE. 305
 VIRGINIA GARDENS, FL 33166
 PHONE(305) 871-1530 FAX (305) 871-1531
 TEXAS LIC. # 90691
 FIRM REGISTRATION # F-13790

TEXAS DEPARTMENT OF INSURANCE - 2018					
SERIES LS18 FLUSH OUTSWING COMMERCIAL STEEL DOOR W/SERIES "AS" STEEL FRAME				DRAWN BY: M.P.	
DAYBAR INDUSTRIES LTD				9/30/2021 DATE	
50 WEST DRIVE, BRAMPTON, ON CANADA, L6T 2J4 TEL: 905 625-8000 FAX: 905 625-4204				21-128 DRAWING No	
REV. No	DESCRIPTION	DATE	REV. No	DESCRIPTION	DATE
1	OLD 17-059	9/30/21	3	-	-
2	-	-	4	-	-



MATERIAL:
18 GA SATIN COAT

EMA BUTTERFLY ANCHOR



WALTER A. TILLIT Jr P.E.
PROFESSIONAL ENGINEER
6355 N.W 36 STREET, STE. 305
VIRGINIA GARDENS, FL 33166
PHONE(305) 871-1530 FAX (305) 871-1531
TEXAS LIC. # 90691
FIRM REGISTRATION # F-13790

TEXAS DEPARTMENT OF INSURANCE - 2018

SERIES LS18 FLUSH OUTSWING COMMERCIAL
STEEL DOOR W/SERIES "AS" STEEL FRAME

DRAWN BY:
M.P.

DAYBAR INDUSTRIES LTD

9/30/2021
DATE

50 WEST DRIVE, BRAMPTON,
ON CANADA, L6T 2J4
TEL: 905 625-8000 FAX: 905 625-4204

21-128
DRAWING No

REV. No	DESCRIPTION	DATE	REV. No	DESCRIPTION	DATE
1	OLD 17-059	9/30/21	3	-	-
2	-	-	4	-	-

SHEET 13A OF 14

BILL OF MATERIALS:

ITEM	QUANTITY	MATERIAL	BASIC DIMENSIONS OR ADDITIONAL DETAILS
①	1	16 GAUGE WELDED FRAME	AS 5 3/4" JAMB DEPTH X 2" FACE X .057 MIN
②	1	18 GAUGE FLUSH DOOR COMMERCIAL STEEL	1 3/4" THICK X (.045 MIN). C/W PAPER HONEY COMB CORE
③	3	HINGE REINFORCINGS (DOOR)	1 1/4" X 10" X 10 GAUGE (.135 MIN)
④	3	HINGE REINFORCINGS (FRAME)	1 1/2" X 8 3/4" X 10 GAUGE (.135 MIN)
⑤	1	STRIKE REINFORCINGS (FRAME)	1 3/8" X 7 5/16" X 14 GAUGE (.072 MIN)
⑤A	1	DEAD LOCK STRIKE TAB	2 3/16" X 15/16" X 14 GAUGE (.072 MIN)
⑥	6	WIRE MASONRY FRAME ANCHORS (3 PER JAMB) (DR)	9 1/2" LONG X 10 GAUGE (.135 MIN)
⑦	6	CLIPIN STUD ANCHORS (3 PER JAMB) (DR)	1 7/8" X 5 5/8" X 20 GAUGE (.035 MIN)
⑧	6	EMA ANCHOR BOLTS (4 PER JAMB) (DR)	3/8" X 5" STEEL UNICAN-SLEEVE ANCHOR
⑨	6	CARRIAGE ANCHOR BOLTS (4 PER JAMB) (DR)	3/8"-16 X 6" STEEL CARRIAGE BOLT C/W NUT AND WASHER
⑩	3	HINGES-HAGER BB1191, STL. NICKEL FINISH	4.5" X 4.5" STANDARD WEIGHT (.134 THICK), ATTACHED TO FRAME W/ (4) 12-24 X 1/2" FHMS
⑪	1	RIM EXIT: DETEX VALUE SERIES C/W OPTIONAL ALARM	N/A
⑫	1	MORTISE LOCK: MARKS SERIES 5	N/A
⑬	1	CYLINDRICAL LOCK: MARKS SERIES 170 GRADE #1	N/A
⑭	1	DEAD BOLT: MARKS SERIES 130	N/A
⑮	1	WEATHER STRIP: NATIONAL GUARD PRODUCTS #120NA	SECURED WITH #6 X 1/2" SMS SCREWS
⑯	1	THRESHOLD: NATIONAL GUARD PRODUCTS #950NA	EXTRUDED ALUMINUM
⑰	1	CAULKING: GE SILICONE II	N/A
⑱	1	STRIKE FOR RIM EXIT DEVICE ⑪	0.125" THK., STL., PAINTED FINISH (SEE SHEET 3A FOR SIZES)
⑲	1	STRIKE FOR DEAD BOLT ⑭	0.095" THK., STL., NICKEL FINISH (SEE SHEET 3A FOR SIZES)
⑳	1	STRIKE FOR CYLINDRICAL LOCK ⑬	0.095" THK., STL., NICKEL FINISH (SEE SHEET 3A FOR SIZES)
㉑	1	STRIKE FOR MORTISE LOCK ⑫	0.095" THK., STL., NICKEL FINISH (SEE SHEET 3A FOR SIZES)



WALTER A. TILLIT Jr P.E.
 PROFESSIONAL ENGINEER
 6355 N.W 36 STREET, STE. 305
 VIRGINIA GARDENS, FL 33166
 PHONE(305) 871-1530 FAX (305) 871-1531
 TEXAS LIC. # 90691
 FIRM REGISTRATION # F-13790

TEXAS DEPARTMENT OF INSURANCE - 2018

SERIES LS18 FLUSH OUTSWING COMMERCIAL
 STEEL DOOR W/SERIES "AS" STEEL FRAME

DRAWN BY:
M.P.

DAYBAR INDUSTRIES LTD

9/30/2021
DATE

50 WEST DRIVE, BRAMPTON,
 ON CANADA, L6T 2J4
 TEL: 905 625-8000 FAX: 905 625-4204

21-128
DRAWING No

REV. No	DESCRIPTION	DATE	REV. No	DESCRIPTION	DATE
1	OLD 17-059	9/30/21	3	-	-
2	-	-	4	-	-

SHEET 14 OF 14