

WEILAND SLIDING DOORS AND WINDOWS, INC.

LIFTSLIDE DOOR (AWLS & ALS-T) (IMPACT)

INSTALLATION NOTES:

- THE NUMBER OF INSTALLATION ANCHORS DEPICTED IS THE MINIMUM NUMBER OF ANCHORS TO BE USED FOR PRODUCT INSTALLATION.
- INSTALL INSTALLATION ANCHORS AT ALL JACKING SCREW LOCATIONS (SEE SILL INSTALLATION).
- MINIMUM EMBEDMENT AND EDGE DISTANCE EXCLUDE WALL FINISHES, INCLUDING BUT NOT LIMITED TO STUCCO, FOAM, BRICK VENEER, AND SIDING.
- USE ONE (1) INSTALLATION ANCHOR PER TRACK AT EACH ANCHOR LOCATION SHOWN ON HEAD AND JAMB, UNLESS OTHERWISE NOTED. (SEE SHEET 3 & 5)
- USE ONE (1) INSTALLATION ANCHOR THROUGH HOOKSTRIP AT EACH ANCHOR LOCATIONS SHOWN ON POCKET APPLICATIONS. (SEE SHEET 3 & 5)
- USE TWO (2) INSTALLATION ANCHORS AT EACH ANCHOR LOCATION SHOWN ON SILL. (SEE SHEET 3 & 5)
- FOR HEAD & JAMB:** FOR INSTALLATION INTO WOOD FRAMING, USE #10 STAINLESS STEEL WOOD SCREWS OF SUFFICIENT LENGTH TO ACHIEVE 1 1/2 INCH MINIMUM EMBEDMENT. ANCHORS SHALL MAINTAIN MINIMUM 3/4" EDGE DISTANCE & 3" MIN. O.C. SPACING.
- FOR HEAD & JAMB:** FOR INSTALLATION THROUGH 1X BUCK TO CONCRETE/MASONRY OR DIRECTLY INTO CONCRETE/MASONRY, USE 3/16 INCH ELCO ULTRACONS OR HILTI KWIK-CON II+ ANCHORS OF SUFFICIENT LENGTH TO ACHIEVE 1 1/2 INCH MINIMUM EMBEDMENT THROUGH HEAD & JAMB TRACKS. CONCRETE/MASONRY ANCHORS SHALL MAINTAIN A MIN. EDGE DISTANCE 1-1/2" & 3" MIN. O.C. SPACING.
- FOR HEAD & JAMB:** FOR INSTALLATION INTO STEEL STUD FRAMING, USE #12 GRADE 5 OR STAINLESS STEEL SELF-DRILLING OR SELF-TAPPING SCREWS OF SUFFICIENT LENGTH TO ACHIEVE MINIMUM OF THREE THREADS PENETRATION BEYOND METAL WALL. ANCHORS SHALL MAINTAIN MINIMUM 1/2" EDGE DISTANCE & 3/4" MIN. O.C. SPACING.
- FOR SILL:** USE 1/4-20 GALVANIZED OR 300 SERIES STAINLESS STEEL STEEL THREADED RODS OR BOLT WITH 3/4 INCH STEEL WASHER AND LOCK & LEVELING NUTS OF SUFFICIENT LENGTH TO ACHIEVE 1-1/4 INCH MINIMUM EMBEDMENT AT SILL TRACK. CONCRETE/MASONRY ANCHORS SHALL MAINTAIN A MIN. EDGE DISTANCE 1-1/2" & 3" MIN. O.C. SPACING.
- FOR SILL:** FOR INSTALLATION INTO WOOD, USE #14 STAINLESS STEEL WOOD SCREWS OR 1/4" HANGER BOLTS OF SUFFICIENT LENGTH TO ACHIEVE 1-1/2 INCH MINIMUM EMBEDMENT AT SILL TRACK. ANCHORS SHALL MAINTAIN A MIN. EDGE DISTANCE 3/4" & 3" MIN. O.C. SPACING.
- INSTALLATION ANCHORS AND ASSOCIATED HARDWARE MUST BE MADE OF CORROSION RESISTANT MATERIAL OR HAVE A CORROSION RESISTANT COATING.
- FOR GROUT FILLED BLOCK, DO NOT INSTALL INSTALLATION ANCHORS INTO MORTAR JOINTS. EDGE DISTANCE IS MEASURED FROM FREE EDGE OF BLOCK OR EDGE OF MORTAR JOINT INTO FACE SHELL OF BLOCK.
- INSTALLATION ANCHORS SHALL BE INSTALLED IN ACCORDANCE WITH ANCHOR MANUFACTURER'S INSTALLATION INSTRUCTIONS, AND ANCHORS SHALL NOT BE USED IN SUBSTRATES WITH STRENGTHS LESS THAN THE MINIMUM STRENGTH SPECIFIED BY THE ANCHOR MANUFACTURER.
- INSTALLATION ANCHOR CAPACITIES FOR PRODUCTS HEREIN ARE BASED ON SUBSTRATE MATERIALS WITH THE FOLLOWING PROPERTIES:
 - WOOD - MINIMUM SPECIFIC GRAVITY OF 0.42.
 - CONCRETE -MINIMUM COMPRESSIVE STRENGTH OF 3000 PSI.
 - GROUT-FILLED CMU- UNIT STRENGTH CONFORMS TO ASTM C-90 WITH MINIMUM COMPRESSIVE STRENGTH OF 2000 PSI AND GROUT CONFORMS TO ASTM C 476, MINIMUM GROUT COMPRESSIVE STRENGTH OF 2000 PSI.
 - HOLLOW BLOCK CMU - UNIT STRENGTH CONFORMS TO ASTM C-90 WITH MINIMUM COMPRESSIVE STRENGTH OF 2000 PSI.
 - STEEL - MINIMUM YIELD STRENGTH OF 33 KSI. MINIMUM 14 GA. (0.0747") WALL THICKNESS.

GENERAL NOTES:

- THE PRODUCT SHOWN HEREIN IS DESIGNED AND MANUFACTURED TO COMPLY WITH THE 2018 INTERNATIONAL BUILDING CODE AND 2018 INTERNATIONAL RESIDENTIAL CODE, AND HAS BEEN EVALUATED IN ACCORDANCE WITH THE FOLLOWING STANDARDS:
 - AAMA/WDMA/CSA 101/I.S.2/A440-17
 - ASTM E1886-13a
 - ASTM E1996-14a
 - TAS 201-94
 - TAS 202-94
 - TAS 203-94
- ADEQUACY OF THE EXISTING STRUCTURAL CONCRETE/MASONRY AND 2X FRAMING AS A MAIN WIND FORCE RESISTING SYSTEM CAPABLE OF WITHSTANDING AND TRANSFERRING APPLIED PRODUCT LOADS TO THE FOUNDATION IS THE RESPONSIBILITY OF THE ENGINEER OR ARCHITECT OF RECORD FOR THE PROJECT OF INSTALLATION.
- 1X AND 2X BUCKS (WHEN USED) SHALL BE DESIGNED AND ANCHORED TO PROPERLY TRANSFER ALL LOADS TO THE STRUCTURE. BUCK DESIGN AND INSTALLATION IS THE RESPONSIBILITY OF THE ENGINEER OR ARCHITECT OF RECORD FOR THE PROJECT OF INSTALLATION.
- THE INSTALLATION DETAILS DESCRIBED HEREIN ARE GENERIC AND MAY NOT REFLECT ACTUAL CONDITIONS FOR A SPECIFIC SITE. IF SITE CONDITIONS CAUSE INSTALLATION TO DEVIATE FROM THE REQUIREMENTS DETAILED HEREIN, A LICENSED ENGINEER OR ARCHITECT SHALL PREPARE SITE SPECIFIC DOCUMENTS FOR USE WITH THIS DOCUMENT TO BE REVIEWED BY BUILDING OFFICIAL.
- APPROVED IMPACT PROTECTIVE SYSTEM **IS NOT REQUIRED** ON THIS PRODUCT IN AREAS REQUIRING IMPACT RESISTANCE.
- DOOR FRAME MATERIAL: ALUMINUM 6063-T5.
- GLASS MEET THE REQUIREMENTS OF ASTM E1300 GLASS CHARTS. SEE SHEETS 9 & 10 FOR GLAZING DETAILS.
- DESIGNATIONS "X", "O", "P", & "W" STAND FOR THE FOLLOWING:
 - X: OPERABLE PANEL
 - O: FIXED PANEL
 - P: POCKET
 - W: WALL
- APPROVED CONFIGURATIONS INCLUDE:
 - 1 TRACK - PX-XP, PX, XP, O, O-O
 - 2 TRACK - PXX-XXP, OX-XXP, PXX-XO, PXX, XXP, OX-XO, OX, XO, OXO, O-O
 - 3 TRACK - PXXX, XXXP, XXO, OXX, PXXX-XXXP, OXX-XXO, PXXX-XXO, OXX-XXXP
 - 4 TRACK - PXXXX, XXXXP, OXXX, XXXO, PXXXX-XXXXP, OXXX-XXXO, PXXXX-XXXO, OXXX-XXXXP
 - 5 TRACK - XXXXP, PXXXX, OXXXX, XXXO, PXXXX-XXXXP, OXXXX-XXXXO, PXXXX-XXXXO, OXXXX-XXXXP
 - CONFIGURATIONS USING 90 DEGREE CORNER MAY UTILIZE ABOVE TRACK CONFIGURATION OPTIONS SUCH THAT MAXIMUM SIZE LISTED ON SHEET 4 IS NOT EXCEEDED.
 - CUSTOM CONFIGURATIONS AVAILABLE UPON REQUEST.
 - X PANELS IN THE ABOVE CONFIGURATIONS MAY BE REPLACED BY O PANELS. POCKETS (P) MAY BE REPLACED BY WALLS (W).
 - UNLIMITED NUMBER OF TRACKS MAY BE USED SUCH THAT MAXIMUM OVERALL WIDTHS AS SPECIFIED ON SHEETS 2 & 4 ARE NOT EXCEEDED.

TABLE OF CONTENTS	
SHEET	SHEET DESCRIPTION
1	INSTALLATION & GENERAL NOTES
2	6 PANEL ELEVATION
3	6 PANEL ANCHOR LAYOUT
4	90° CORNER - 5 PANEL ELEVATION
5	90° CORNER - 5 PANEL ANCHOR LAYOUT
6	LOCKRAIL CONFIGURATIONS
7	VERTICAL SECTIONS
8	HORIZONTAL SECTIONS
9	HORIZONTAL SECTIONS & GLAZING DETAILS 1 & 2
10	VERTICAL & HORIZONTAL SECTIONS & PANEL DETAIL
11	SINGLE AND DOUBLE FIXED PANEL ANCHOR LAYOUTS
12	GU HARDWARE, LOCKRAIL & CORNER CONSTRUCTION
13	ALS-T DETAILS
14	TYPICAL FLUSH TRACK AND SHORT TRACK DETAILS
15	BILL OF MATERIAL
16	COMPONENTS
17	COMPONENTS
18	HURRICANE SHOOT BOLT ASSEMBLY

CONFIGURATION	SIZE	DESIGN PRESSURES	IMPACT RATING
PXXX-XXO (BI-PARTING)	350.5" X 147.75"	+45/-45 PSF	SMALL AND LARGE MISSILE IMPACT RATED (ASTM MISSILE LEVEL A & D)
OXX-XO (CORNER)	183"/122" X 147.75"	+45/-45 PSF	
PXXX-XXO (BI-PARTING)	352.5" X 99.875"	+80/-80 PSF	



1319 ROCKY POINT DR #100
OCEANSIDE, CA 92056
PH: (760) 722.8828 FX: (760) 722.8838

TITLE: LIFTSLIDE DOOR (AWLS & ALS-T)
(IMPACT)

INSTALLATION & GENERAL NOTES

PREPARED BY:
BUILDING DROPS, INC.
398 E. DANIA BEACH BLVD., STE. 338
DANIA BEACH, FL 33004
PH: (954)399-8478
FAX: (954)744-4738
WEB: www.buildingdrops.com



REMARKS	BY	DATE
A: 2018 IBC&IRC UPDATE	MS	01.17.22

THE INSTALLATION DETAILS DESCRIBED HEREIN ARE GENERIC AND MAY NOT REFLECT ACTUAL CONDITIONS FOR A SPECIFIC SITE. IF SITE CONDITIONS CAUSE INSTALLATION TO DEVIATE FROM THE REQUIREMENTS DETAILED HEREIN, A LICENSED ENGINEER OR ARCHITECT SHALL PREPARE SITE SPECIFIC DOCUMENTS FOR USE WITH THIS DOCUMENT.



HERMES F. NORERO, P.E.
TEXAS P.E. No 118471
BUILDING DROPS, INC
398 E. DANIA BEACH BLVD. # 338
DANIA BEACH, FL 33004
TBPE FIRM No. 13734

DATE: **03.03.17**

DWG. BY: **LA** CHK. BY: **SM**

SCALE: **NTS**

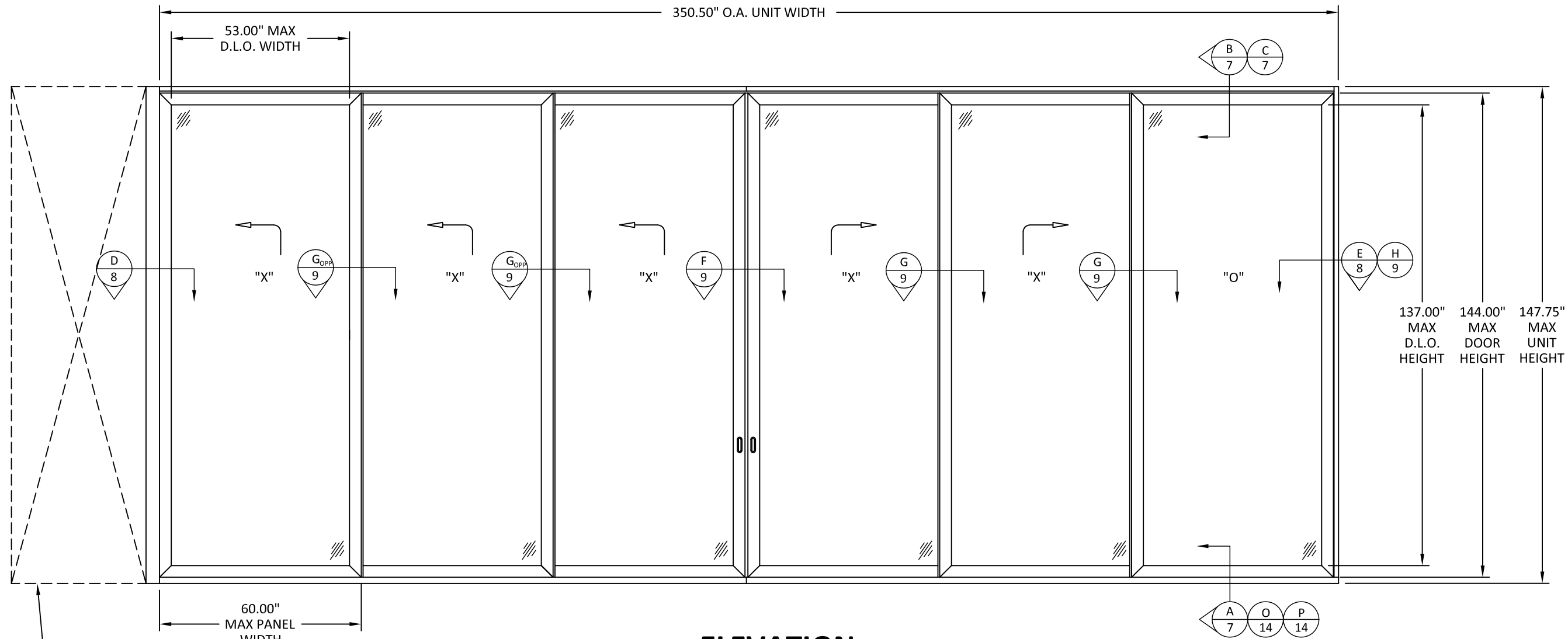
DWG. #: **WSD007**

SHEET:

1

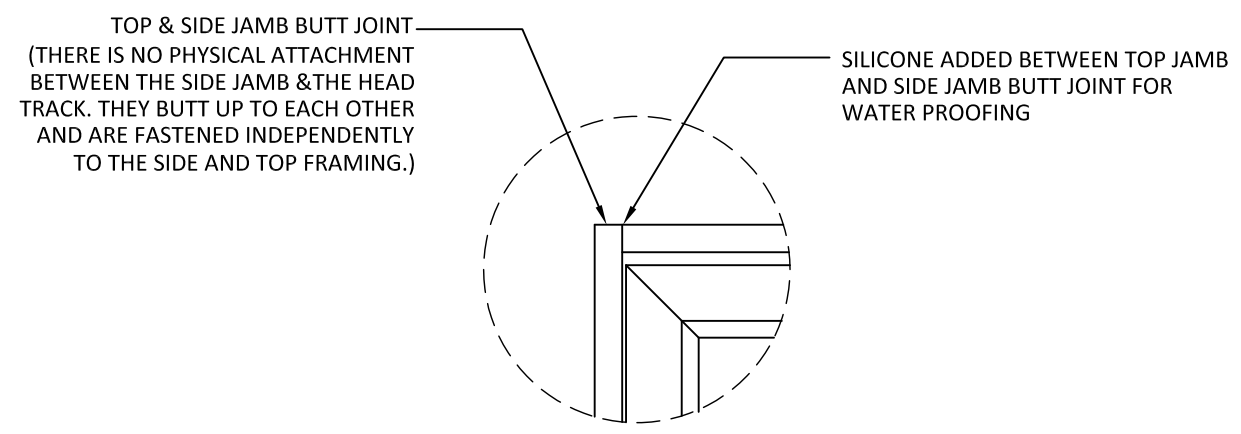
OF 18

s:\projects\andersen windows\tdi-22-0105 - tdi submittal - dr877 re-evaluation - weiland awls & als-t liftslide door.dwg\wstd007.dwg 1/17/2022 1:52 PM



OPTIONAL POCKET,
POCKET CONSTRUCTION
SHALL BE EVALUATED
ON A SITE-BY-SITE BASIS

ELEVATION
EXTERIOR VIEW - 3 TRACK (PXXX-XXO)



**FRAME CORNER
DETAIL**

- NOTES:**
1. DOOR SHALL USE SHOOT BOLT LOCKING HARDWARE BY WEILAND AT INTERLOCK STILES, MEETING STILES, AND CORNER STILES INTO THE HEAD AND SILL.
 2. DOOR SHALL USE LIFT AND SLIDE HARDWARE BY GU.
 3. SEE PAGE 1 FOR DESIGN PRESSURES.
 4. POCKET (P) OR WALL (W) CONDITIONS MAY BE USED AT EITHER SIDE OR BOTH SIDES OF DOOR ASSEMBLY.



1319 ROCKY POINT DR #100
OCEANSIDE, CA 92056
PH: (760) 722.8828 FX: (760) 722.8838

TITLE: LIFTSLIDE DOOR (AWLS & ALS-T)
(IMPACT)

6 PANEL ELEVATIONS

PREPARED BY: BUILDING DROPS, INC.
398 E. DANIA BEACH BLVD., STE. 338
DANIA BEACH, FL 33004
PH: (954)399-8478
FAX: (954)744-4738
WEB: www.buildingdrops.com

REMARKS	BY	DATE
A: 2018 IBC&IRC UPDATE	MS	01.17.22

THE INSTALLATION DETAILS DESCRIBED HEREIN ARE GENERIC AND MAY NOT REFLECT ACTUAL CONDITIONS FOR A SPECIFIC SITE. IF SITE CONDITIONS CAUSE INSTALLATION TO DEVIATE FROM THE REQUIREMENTS DETAILED HEREIN, A LICENSED ENGINEER OR ARCHITECT SHALL PREPARE SITE SPECIFIC DOCUMENTS FOR USE WITH THIS DOCUMENT.



HERMES F. NORERO, P.E.
TEXAS P.E. No. 118471
BUILDING DROPS, INC
398 E. DANIA BEACH BLVD. # 338
DANIA BEACH, FL 33004
TBPE FIRM No. 13734

DATE:	03.03.17
DWG. BY:	LA
CHK. BY:	SM
SCALE:	NTS
DWG. #:	WSD007
SHEET:	2

TITLE: LIFTSIDE DOOR (AWLS & ALS-T)
(IMPACT)
6 PANEL ANCHOR LAYOUT

PREPARED BY:
BUILDING DROPS, INC.
398 E. DANIA BEACH BLVD., STE. 338
DANIA BEACH, FL 33004
PH: (954)399-8478
FAX: (954)744-4738
WEB: www.buildingdrops.com

REMARKS	BY	DATE
A: 2018 IBC&IRC UPDATE	MS	01.17.22

THE INSTALLATION DETAILS DESCRIBED HEREIN ARE GENERIC AND MAY NOT REFLECT ACTUAL CONDITIONS FOR A SPECIFIC SITE. IF SITE CONDITIONS CAUSE INSTALLATION TO DEVIATE FROM THE REQUIREMENTS DETAILED HEREIN, A LICENSED ENGINEER OR ARCHITECT SHALL PREPARE SITE SPECIFIC DOCUMENTS FOR USE WITH THIS DOCUMENT.



HERMES F. NORERO, P.E.
TEXAS P.E. No. 118471
BUILDING DROPS, INC
398 E. DANIA BEACH BLVD. # 338
DANIA BEACH, FL 33004
TBPE FIRM No. 13734

DATE: 03.03.17

DWG. BY: LA CHK. BY: SM

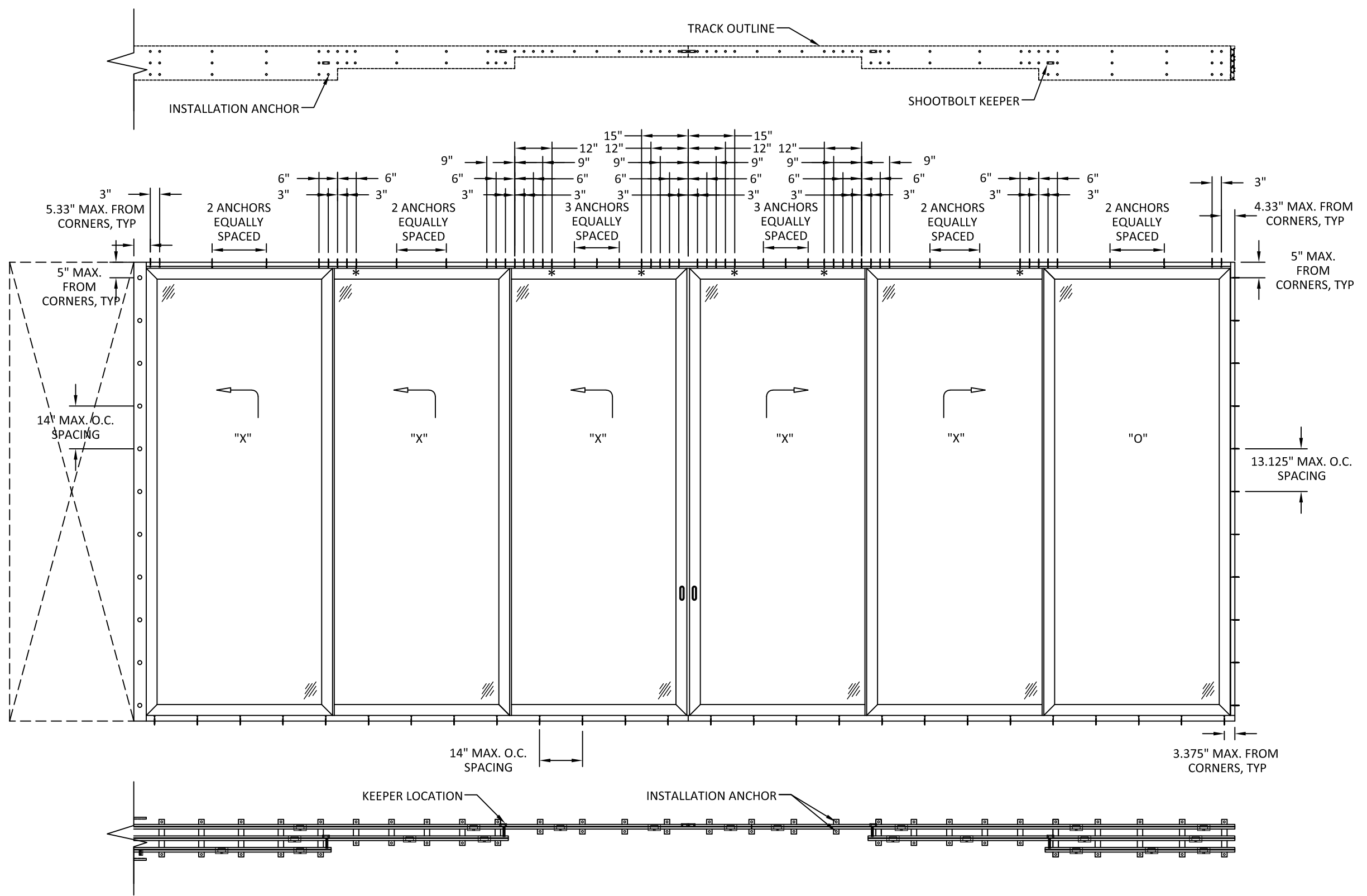
SCALE: NTS

DWG. #: WSD007

SHEET:

3

OF 18



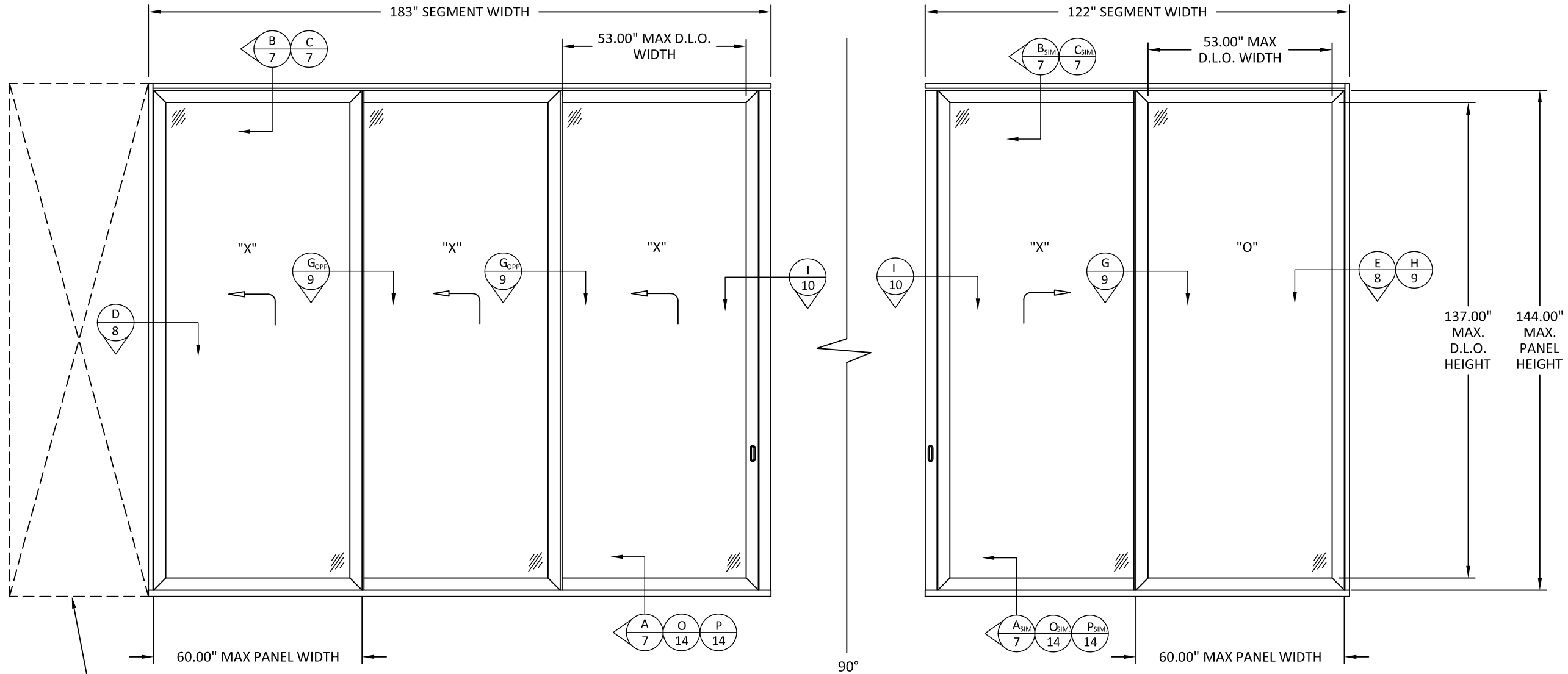
NOTE:
1) ANCHOR LOCATIONS AT THE HEAD MARKED WITH AN ASTERISK (*) ARE NOT REQUIRED WHEN INSTALLING TO WOOD SUBSTRATE.

ANCHOR LAYOUT

NOTE:
1) SEE SHEET 11 FOR ANCHOR LAYOUT FOR SINGLE AND DOUBLE FIXED PANELS.

s:\projects\andersen windows\tdi-22-0105 - tdi submittal - dr877 re-evaluation - weiland awls & als-t liftside door.dwg\wds007.dwg 1/17/2022 1:52 PM

s:\projects\andersen windows\tdi-22-0105 - tdi submittal - dr877 re-evaluation - weiland awls & als-t liftslide door.dwg\wds007.dwg 1/17/2022 1:52 PM



OPTIONAL POCKET,
POCKET CONSTRUCTION
SHALL BE EVALUATED
ON A SITE-BY-SITE BASIS

ELEVATION
EXTERIOR VIEW - 90° CORNER (OXX-XO)

- NOTES:
1. DOOR SHALL USE SHOOT BOLT LOCKING HARDWARE BY WEILAND AT INTERLOCK STILES, MEETING STILES, AND CORNER STILES INTO THE HEAD AND SILL.
 2. DOOR SHALL USE LIFT AND SLIDE HARDWARE BY GU.
 3. SEE PAGE 1 FOR DESIGN PRESSURES.
 4. POCKET (P) OR WALL (W) CONDITIONS MAY BE USED AT EITHER SIDE OR BOTH SIDES OF 90 DEGREE CORNER DOOR ASSEMBLY.



1319 ROCKY POINT DR #100
OCEANSIDE, CA 92056
PH: (760) 722.8828 FX: (760) 722.8838

TITLE: LIFTSLIDE DOOR (AWLS & ALS-T)
(IMPACT)
90° CORNER - 5 PANEL ELEVATION

PREPARED BY:
BUILDING DROPS, INC.
398 E. DANIA BEACH BLVD., STE. 338
DANIA BEACH, FL 33004
PH: (954)399-8478
FAX: (954)744-4738
WEB: www.buildingdrops.com

REMARKS	BY	DATE
A: 2018 IBC&IRC UPDATE	MS	01.17.22

THE INSTALLATION DETAILS DESCRIBED HEREIN ARE GENERIC AND MAY NOT REFLECT ACTUAL CONDITIONS FOR A SPECIFIC SITE. IF SITE CONDITIONS CAUSE INSTALLATION TO DEVIATE FROM THE REQUIREMENTS DETAILED HEREIN, A LICENSED ENGINEER OR ARCHITECT SHALL PREPARE SITE SPECIFIC DOCUMENTS FOR USE WITH THIS DOCUMENT.



HERMES F. NORERO, P.E.
TEXAS P.E. No. 118471
BUILDING DROPS, INC.
398 E. DANIA BEACH BLVD. # 338
DANIA BEACH, FL 33004
TBPE FIRM No. 13734

DATE: 03.03.17
DWG. BY: LA
CHK. BY: SM
SCALE: NTS
DWG. #: WSD007
SHEET:

4

TITLE: LIFTSLIDE DOOR (AWLS & ALS-T)
(IMPACT)

90° CORNER - 5 PANEL ANCHOR LAYOUT

PREPARED BY:
BUILDING DROPS, INC.
398 E. DANIA BEACH BLVD., STE. 338
DANIA BEACH, FL 33004
PH: (954)399-8478
FAX: (954)744-4738
WEB: www.buildingdrops.com



REMARKS	BY	DATE
A: 2018 IBC&IRC UPDATE	MS	01.17.22

THE INSTALLATION DETAILS DESCRIBED HEREIN ARE GENERIC AND MAY NOT REFLECT ACTUAL CONDITIONS FOR A SPECIFIC SITE. IF SITE CONDITIONS CAUSE INSTALLATION TO DEVIATE FROM THE REQUIREMENTS DETAILED HEREIN, A LICENSED ENGINEER OR ARCHITECT SHALL PREPARE SITE SPECIFIC DOCUMENTS FOR USE WITH THIS DOCUMENT.



HERMES F. NORERO, P.E.
TEXAS P.E. No. 118471
BUILDING DROPS, INC
398 E. DANIA BEACH BLVD. # 338
DANIA BEACH, FL 33004
TBPE FIRM No. 13734

DATE: 03.03.17

DWG. BY: LA CHK. BY: SM

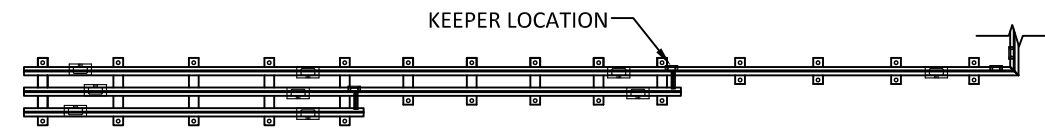
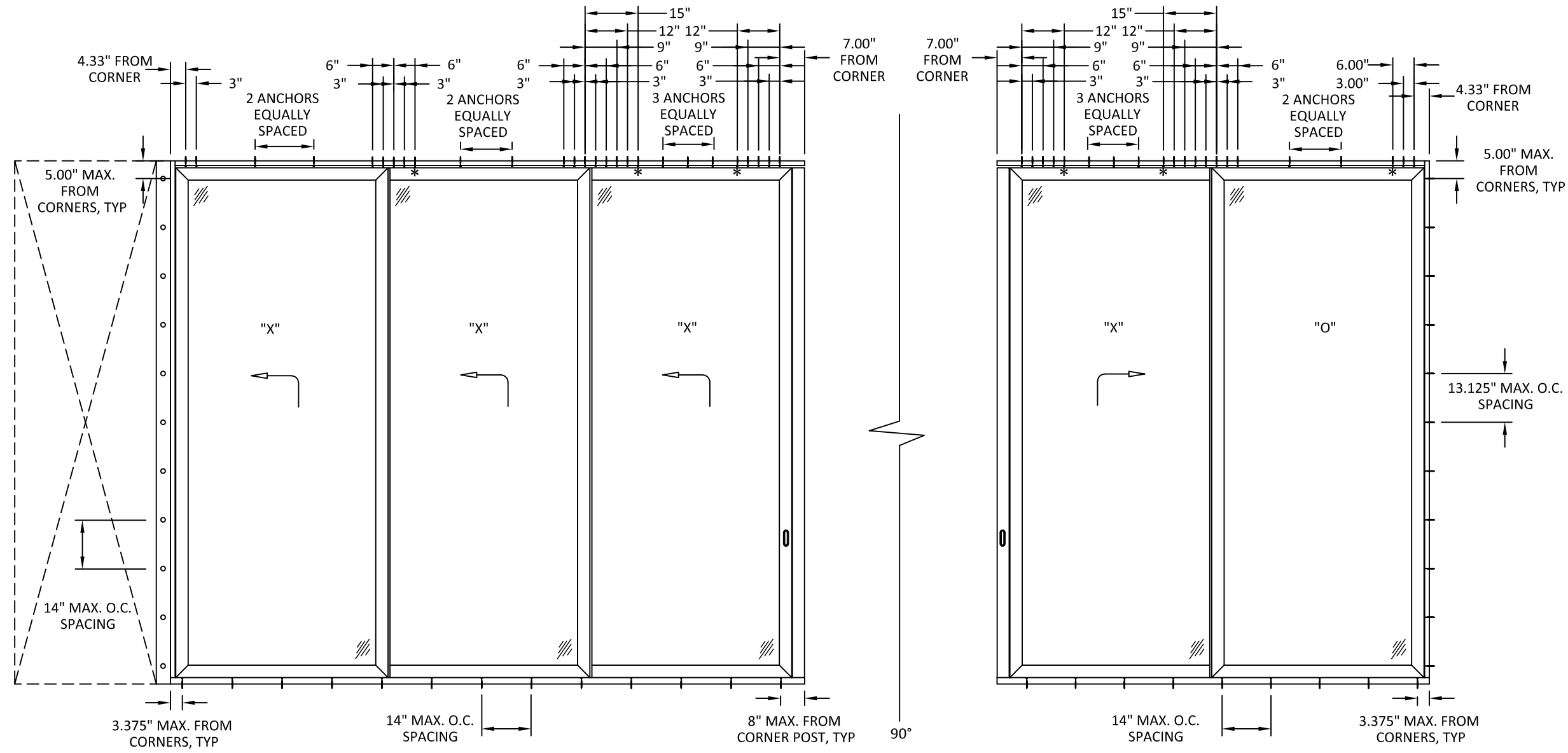
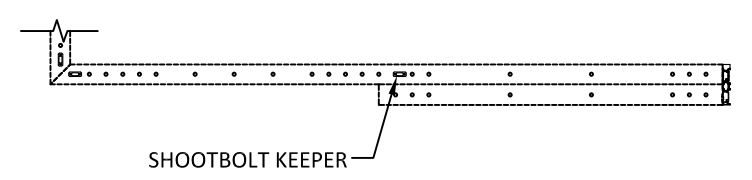
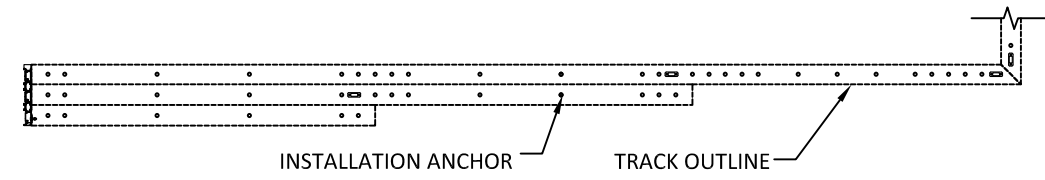
SCALE: NTS

DWG. #: WSD007

SHEET:

5

OF 18



ANCHOR LAYOUT

NOTE:
1) ANCHOR LOCATIONS AT THE HEAD MARKED WITH AN ASTERISK (*) ARE NOT REQUIRED WHEN INSTALLING TO WOOD SUBSTRATE.

NOTE:
1) SEE SHEET 11 FOR ANCHOR LAYOUT FOR SINGLE AND DOUBLE FIXED PANELS.

s:\projects\andersen windows\tdi-22-0105 - cfi submittal - dr877 re-evaluation - weiland awls & als-t liftslide door\dwg\wstd007.dwg 1/17/2022 1:52 PM



1319 ROCKY POINT DR #100
OCEANSIDE, CA 92056
PH: (760) 722.8828 FX: (760) 722.8838

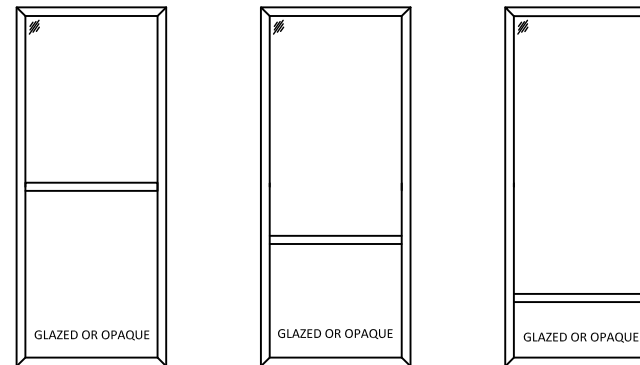
TITLE: LIFTSIDE DOOR (AWLS & ALS-T)
(IMPACT)

LOCKRAIL CONFIGURATIONS

PREPARED BY:
BUILDING DROPS, INC.
398 E. DANIA BEACH BLVD., STE. 338
DANIA BEACH, FL 33004
PH: (954)399-8478
FAX: (954)744.4738
WEB: www.buildingdrops.com



ALLOWED LOCKRAIL CONFIGURATIONS:



LOCKRAIL NOTES:

1. LOCKRAILS ARE LIMITED TO A MAXIMUM DESIGN PRESSURE OF +/- 75 PSF.
2. LOCKRAIL MAY BE USED AT ANY LOCATION ON THE PANEL SUCH THAT THE TESTED SQUARE FOOTAGE OF THE OPAQUE INFILL PANEL IS NOT EXCEEDED.
 - 2.1. TESTED INFILL PANEL SIZE (W x H):
53" x 67.04" = 24.67 SQ. FT.
3. LOCK RAIL USE SHALL BE LIMITED TO PANELS 60" WIDE OR LESS.

REMARKS	BY	DATE
A: 2018 IBC&IRC UPDATE	MS	01.17.22

THE INSTALLATION DETAILS DESCRIBED HEREIN ARE GENERIC AND MAY NOT REFLECT ACTUAL CONDITIONS FOR A SPECIFIC SITE. IF SITE CONDITIONS CAUSE INSTALLATION TO DEVIATE FROM THE REQUIREMENTS DETAILED HEREIN, A LICENSED ENGINEER OR ARCHITECT SHALL PREPARE SITE SPECIFIC DOCUMENTS FOR USE WITH THIS DOCUMENT.



HERMES F. NORERO, P.E.
TEXAS P.E. No 118471
BUILDING DROPS, INC
398 E. DANIA BEACH BLVD. # 338
DANIA BEACH, FL 33004
TBPE FIRM No. 13734

DATE: 03.03.17

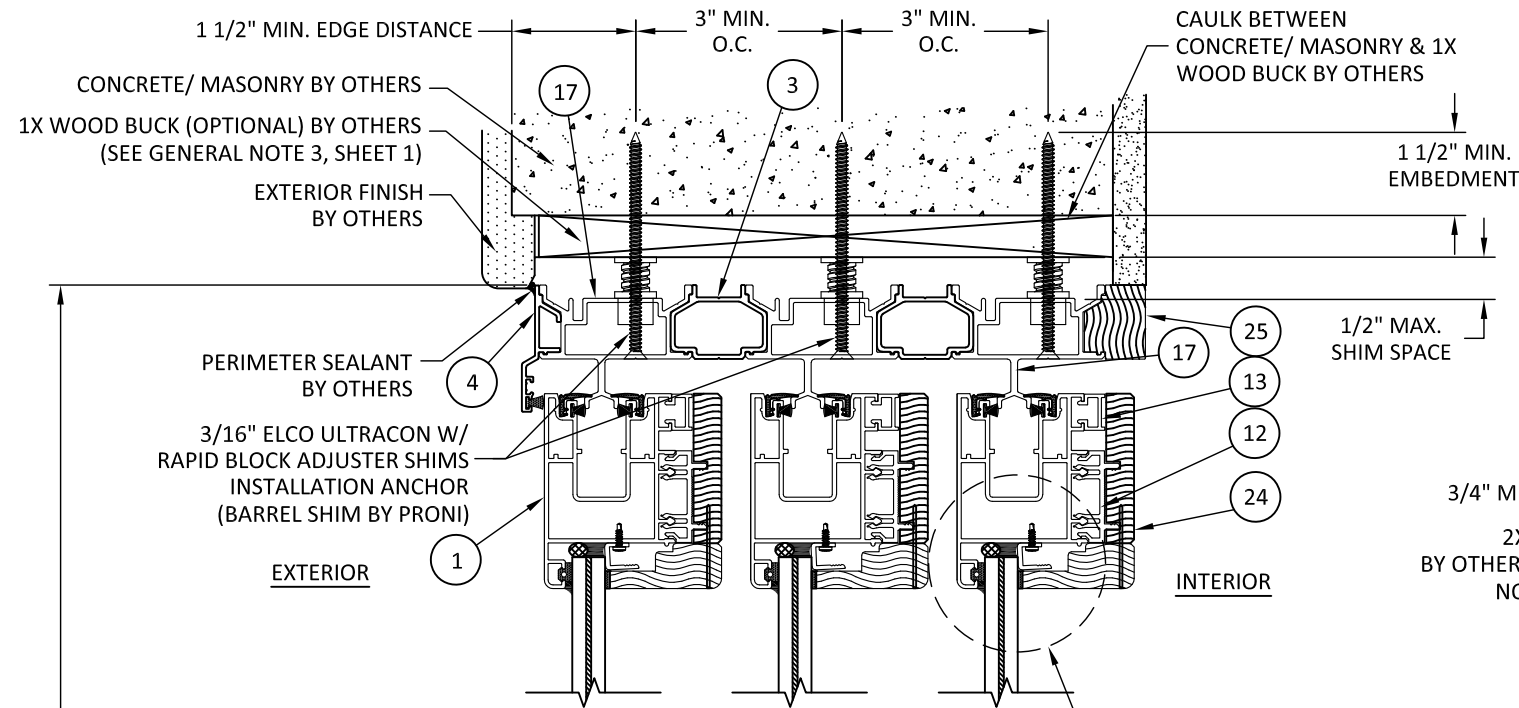
DWG. BY: LA	CHK. BY: SM
----------------	----------------

SCALE: NTS

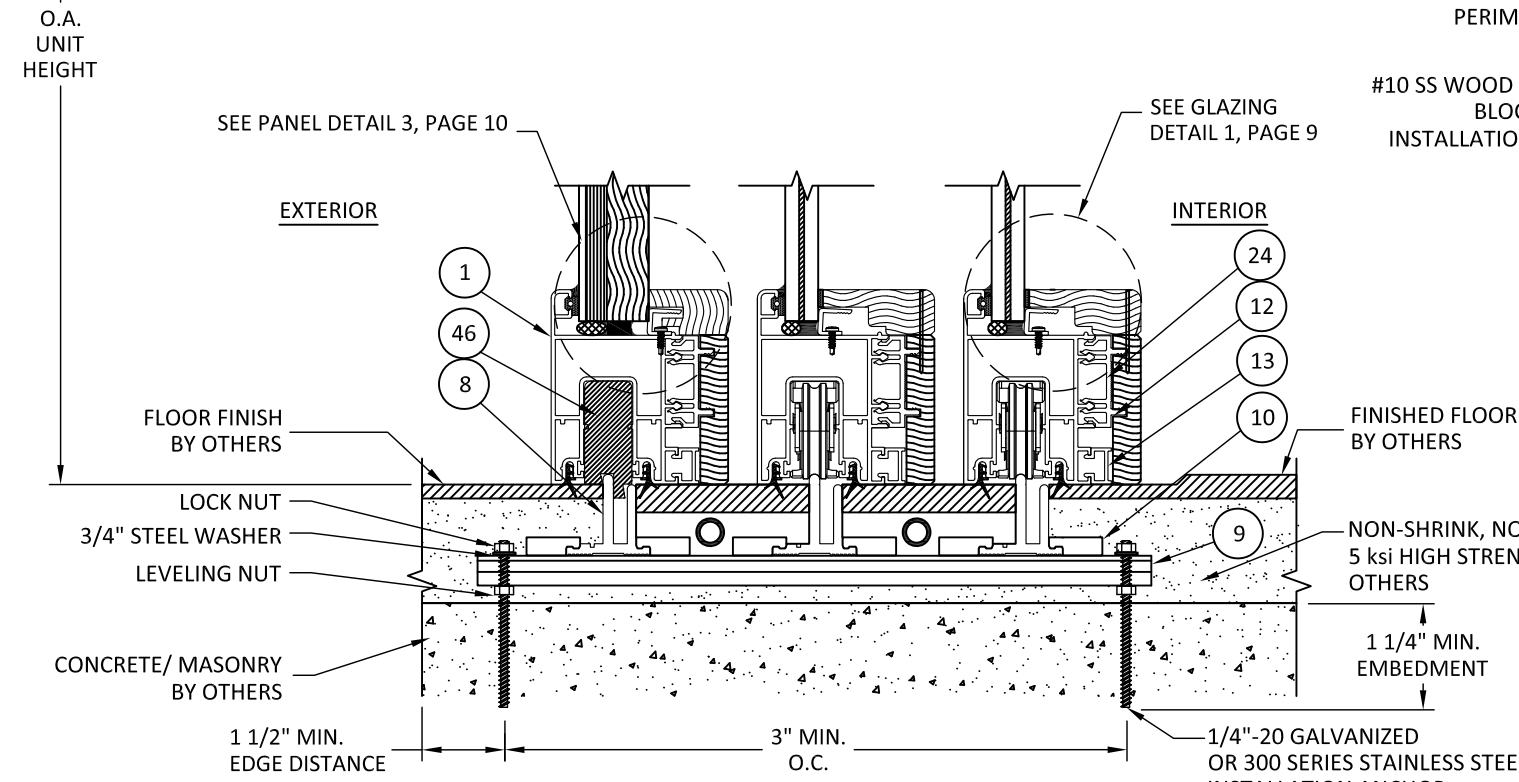
DWG. #: WSD007

SHEET:
6

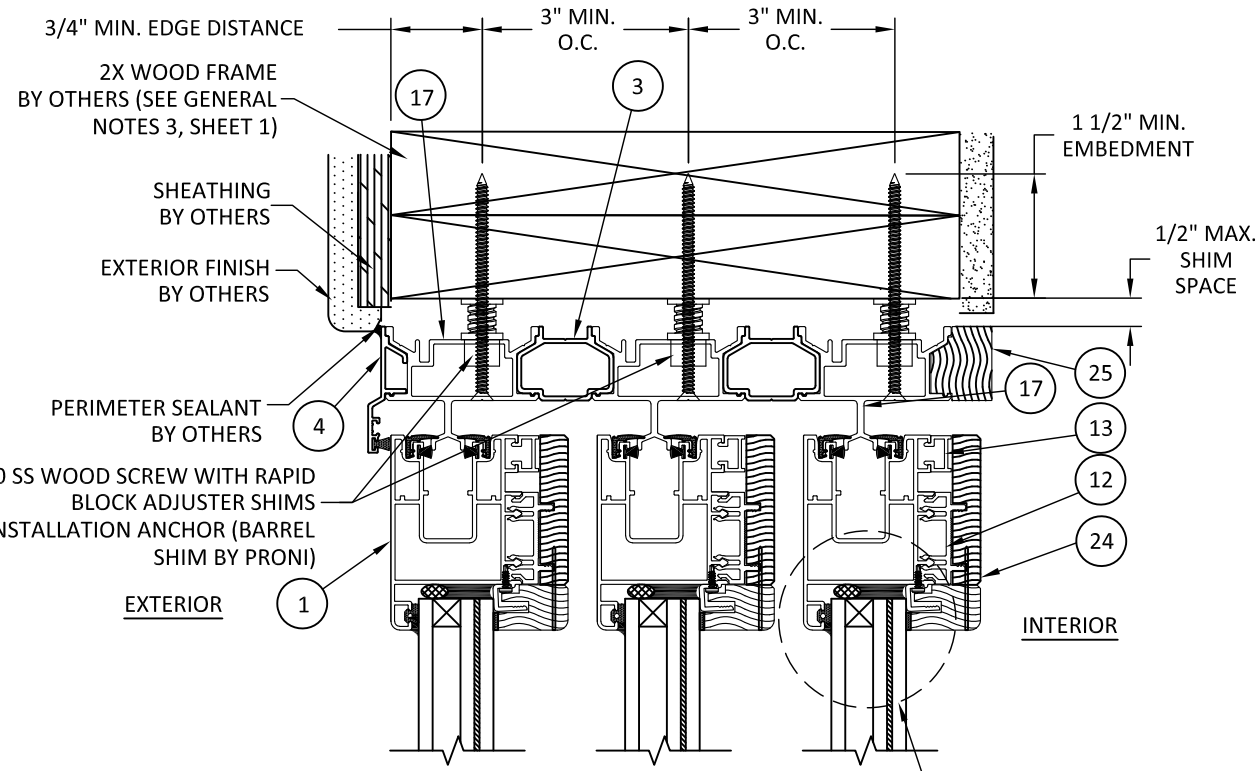
s:\projects\andersen windows\tdi-22-0105 - tdi submittal - dr877 re-evaluation - weiland awls & als-t liftslide door.dwg\wds007.dwg 1/17/2022 1:52 PM



B
7 VERTICAL SECTION
CONCRETE/MASONRY - HEAD
3 TRACK



A
7 VERTICAL SECTION
CONCRETE/MASONRY - SILL
3 TRACK - FULL DRAINAGE TRACK
(WITH TRANSVERSE AND PAN DRAINAGE)



C
7 VERTICAL SECTION
2X WOOD FRAME - HEAD
3 TRACK

SEE GLAZING
DETAIL 1, PAGE 9

SEE GLAZING
DETAIL 1, PAGE 9

SEE GLAZING
DETAIL 2, PAGE 9

#10 SS WOOD SCREW WITH RAPID
BLOCK ADJUSTER SHIMS
INSTALLATION ANCHOR (BARREL
SHIM BY PRONI)

- FOR INSTALLATION INTO PRESSURE TREATED WOOD AT SILL USE #14 STAINLESS STEEL WOOD SCREWS OR 1/4" GALVANIZED OR STAINLESS STEEL HANGER BOLT OF SUFFICIENT LENGTH TO ACHIEVE 1-1/2 INCH MINIMUM EMBEDMENT. ANCHORS SHALL MAINTAIN A MIN. EDGE DISTANCE OF 3/4" & 3" MIN. O.C. SPACING. MAXIMUM SHIM SPACE TO BE 1/2".
- REFER TO SHEET 14 FOR ALTERNATE TRACK DETAILS.



1319 ROCKY POINT DR #100
OCEANSIDE, CA 92056
PH: (760) 722.8828 FX: (760) 722.8838

TITLE: LIFTSLIDE DOOR (AWLS & ALS-T)
(IMPACT)
VERTICAL SECTIONS
PREPARED BY: BUILDING DROPS, INC.
398 E. DANIA BEACH BLVD., STE. 338
DANIA BEACH, FL 33004
PH: (954)399-8478
FAX: (954)744-4738
WEB: www.buildingdrops.com

REMARKS	BY	DATE
A: 2018 IBC&IRC UPDATE	MS	01.17.22

THE INSTALLATION DETAILS DESCRIBED HEREIN ARE GENERIC AND MAY NOT REFLECT ACTUAL CONDITIONS FOR A SPECIFIC SITE. IF SITE CONDITIONS CAUSE INSTALLATION TO DEVIATE FROM THE REQUIREMENTS DETAILED HEREIN, A LICENSED ENGINEER OR ARCHITECT SHALL PREPARE SITE SPECIFIC DOCUMENTS FOR USE WITH THIS DOCUMENT.



HERMES F. NORERO, P.E.
TEXAS P.E. No. 118471
BUILDING DROPS, INC.
398 E. DANIA BEACH BLVD. # 338
DANIA BEACH, FL 33004
TBPE FIRM No. 13734

DATE:	03.03.17	
DWG. BY:	LA	CHK. BY: SM
SCALE:	NTS	
DWG. #:	WSD007	
SHEET:	7	

s:\projects\andersen windows\tdi-22-0105 - tdi submittal - dr877 re-evaluation - weiland awls & als-t liftslide door.dwg\wds007.dwg 1/17/2022 1:53 PM



1319 ROCKY POINT DR #100
OCEANSIDE, CA 92056
PH: (760) 722.8828 FX: (760) 722.8838

TITLE: LIFTSLIDE DOOR (AWLS & ALS-T)
(IMPACT)
HORIZONTAL SECTIONS

HORIZONTAL SECTIONS

PREPARED BY:
BUILDING DROPS, INC.
398 E. DANIA BEACH BLVD., STE. 338
DANIA BEACH, FL 33004
PH: (954)399-8478
FAX: (954)744-4738
WEB: www.buildingdrops.com



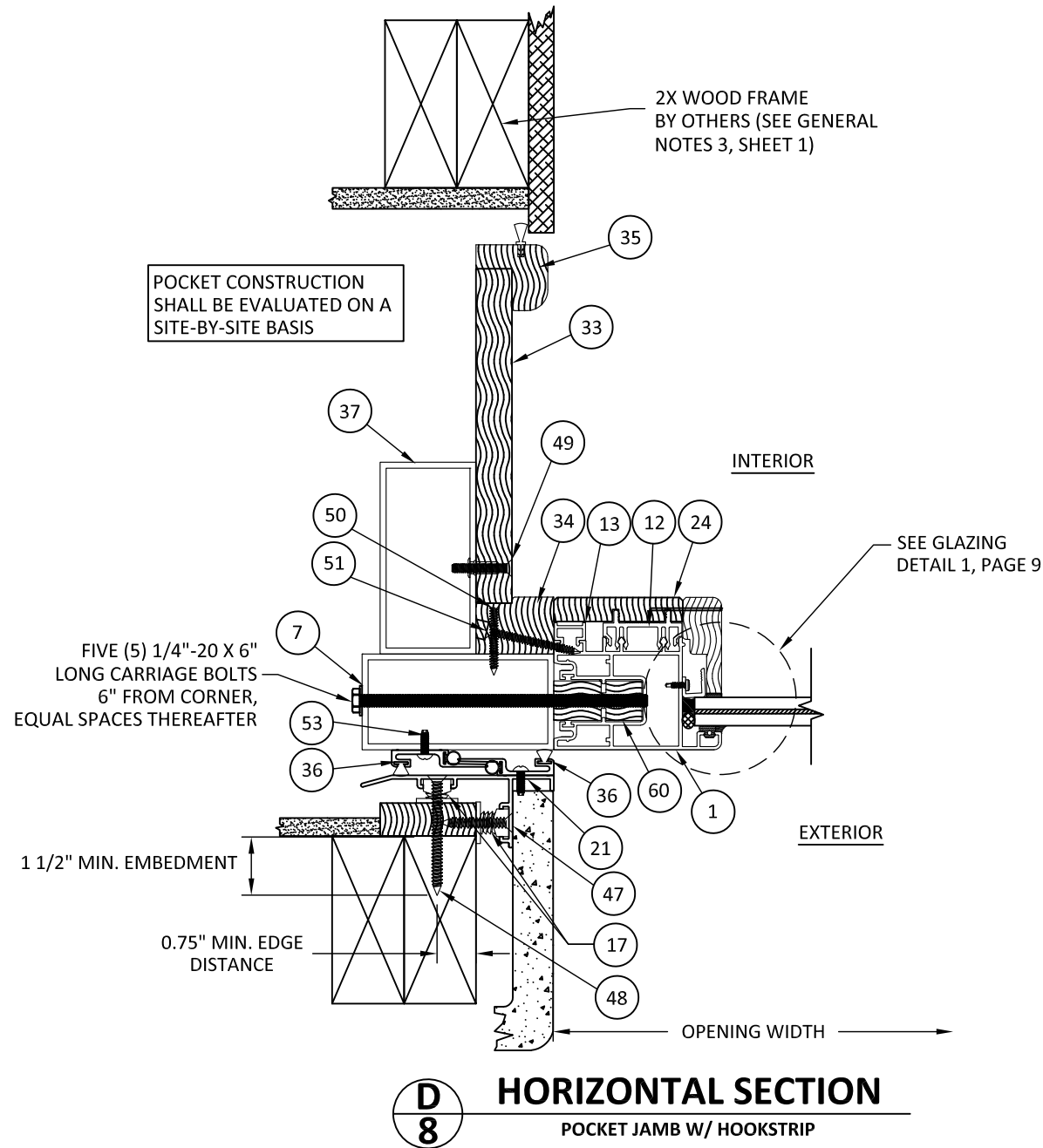
REMARKS	BY	DATE
A: 2018 IBC&IRC UPDATE	MS	01.17.22

THE INSTALLATION DETAILS DESCRIBED HEREIN ARE GENERIC AND MAY NOT REFLECT ACTUAL CONDITIONS FOR A SPECIFIC SITE. IF SITE CONDITIONS CAUSE INSTALLATION TO DEVIATE FROM THE REQUIREMENTS DETAILED HEREIN, A LICENSED ENGINEER OR ARCHITECT SHALL PREPARE SITE SPECIFIC DOCUMENTS FOR USE WITH THIS DOCUMENT.

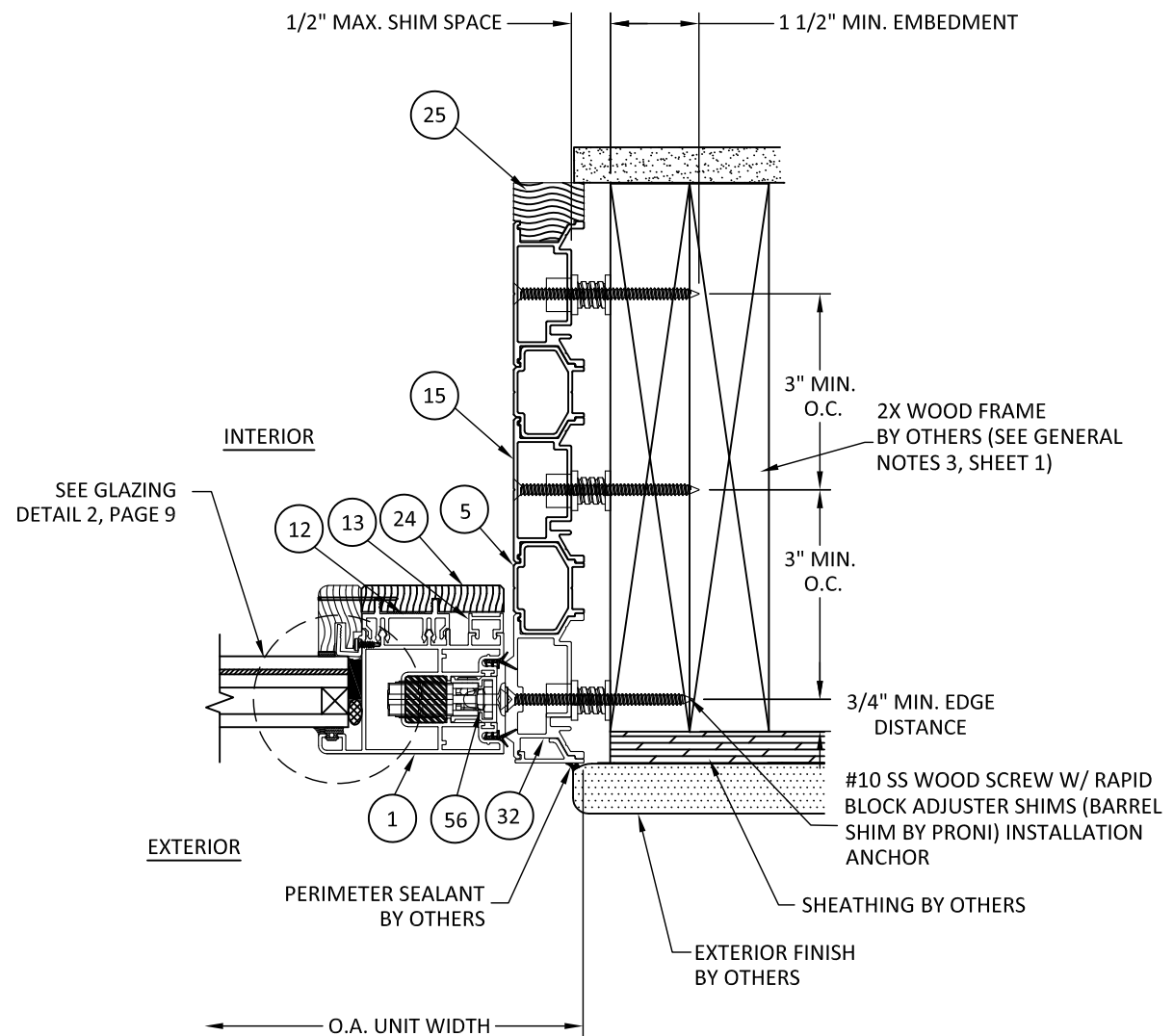


HERMES F. NORERO, P.E.
TEXAS P.E. No. 118471
BUILDING DROPS, INC.
398 E. DANIA BEACH BLVD. # 338
DANIA BEACH, FL 33004
TBPE FIRM No. 13734

DATE:	03.03.17
DWG. BY:	LA
CHK. BY:	SM
SCALE:	NTS
DWG. #:	WSD007
SHEET:	8



D
8
HORIZONTAL SECTION
POCKET JAMB W/ HOOKSTRIP



E
8
HORIZONTAL SECTION
2X WOOD FRAME - JAMB

1/17/2022 1:53 PM

s:\projects\anderson windows\tdi-22-0105 - tdi submittal - dr877 re-evaluation - weiland awls & als-t liftslide door.dwg\wds007.dwg



1319 ROCKY POINT DR #100
OCEANSIDE, CA 92056
PH: (760) 722.8828 FX: (760) 722.8838

TITLE: LIFTSLIDE DOOR (AWLS & ALS-T)
HORIZONTAL SECTIONS & GLAZING DETAILS

PREPARED BY: BUILDING DROPS, INC.
398 E. DANIA BEACH BLVD., STE. 338
DANIA BEACH, FL 33004
PH: (954)399-8478
FAX: (954)744-4738
WEB: www.buildingdrops.com

REMARKS	BY	DATE
A: 2018 IBC&IRC UPDATE	MS	01.17.22

THE INSTALLATION DETAILS DESCRIBED HEREIN ARE GENERIC AND MAY NOT REFLECT ACTUAL CONDITIONS FOR A SPECIFIC SITE. IF SITE CONDITIONS CAUSE INSTALLATION TO DEVIATE FROM THE REQUIREMENTS DETAILED HEREIN, A LICENSED ENGINEER OR ARCHITECT SHALL PREPARE SITE SPECIFIC DOCUMENTS FOR USE WITH THIS DOCUMENT.



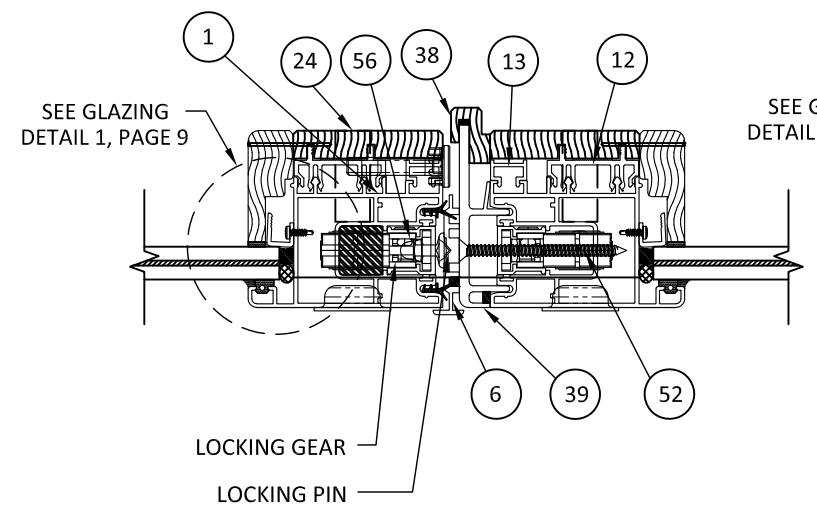
HERMES F. NORERO, P.E.
TEXAS P.E. No. 118471
BUILDING DROPS, INC
398 E. DANIA BEACH BLVD. # 338
DANIA BEACH, FL 33004
TBPE FIRM No. 13734

DATE: 03.03.17

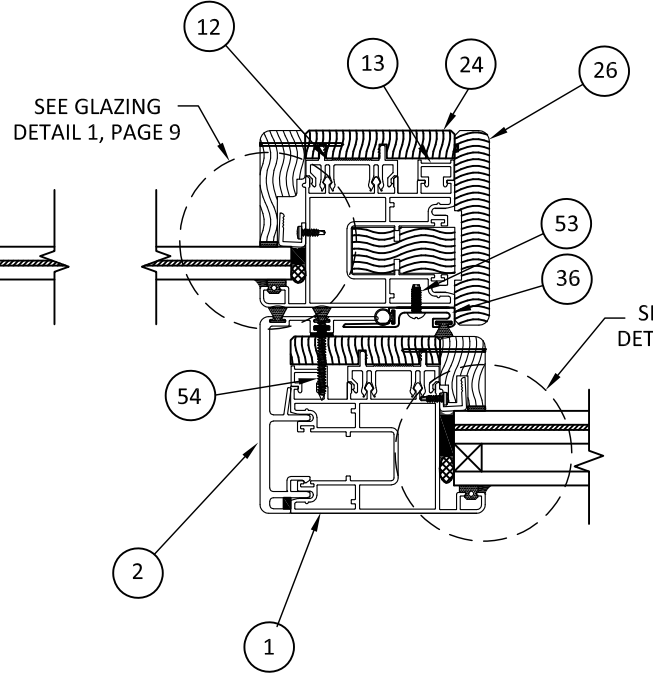
DWG. BY: LA	CHK. BY: SM
SCALE: NTS	
DWG. #: WSD007	
SHEET:	

9

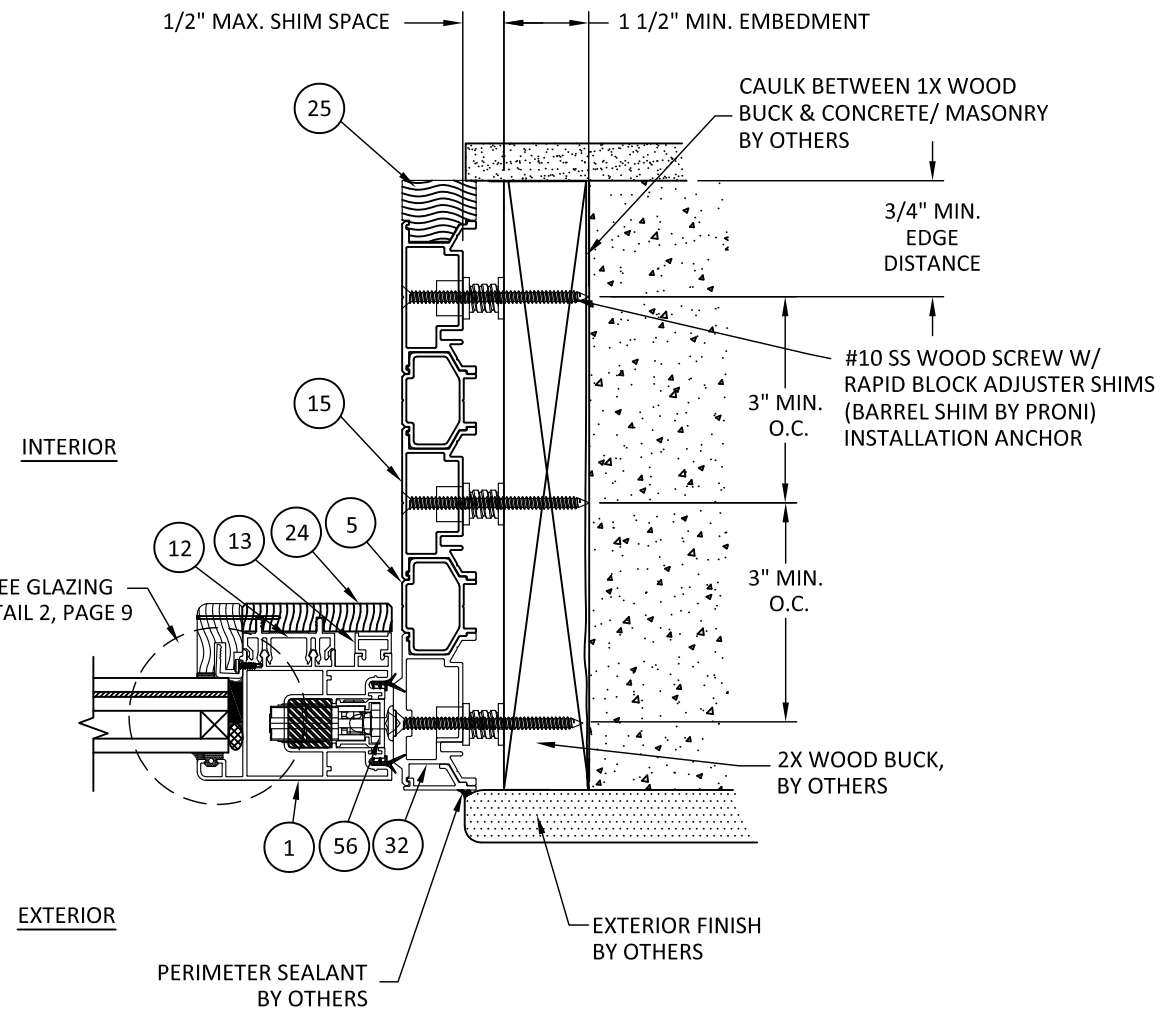
OF 18



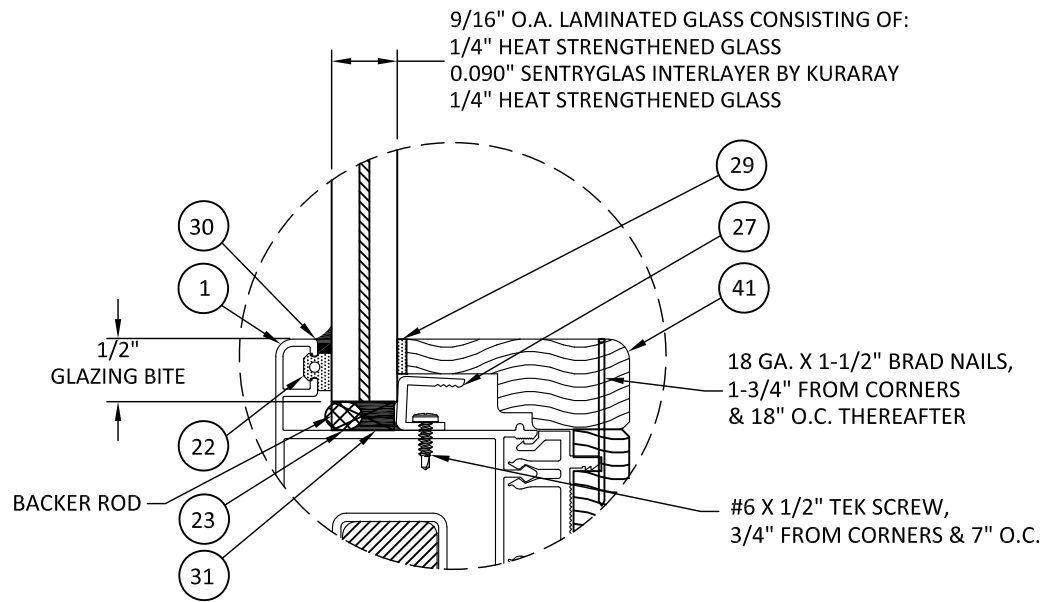
F
9 HORIZONTAL SECTION
PANEL BUTT STILE



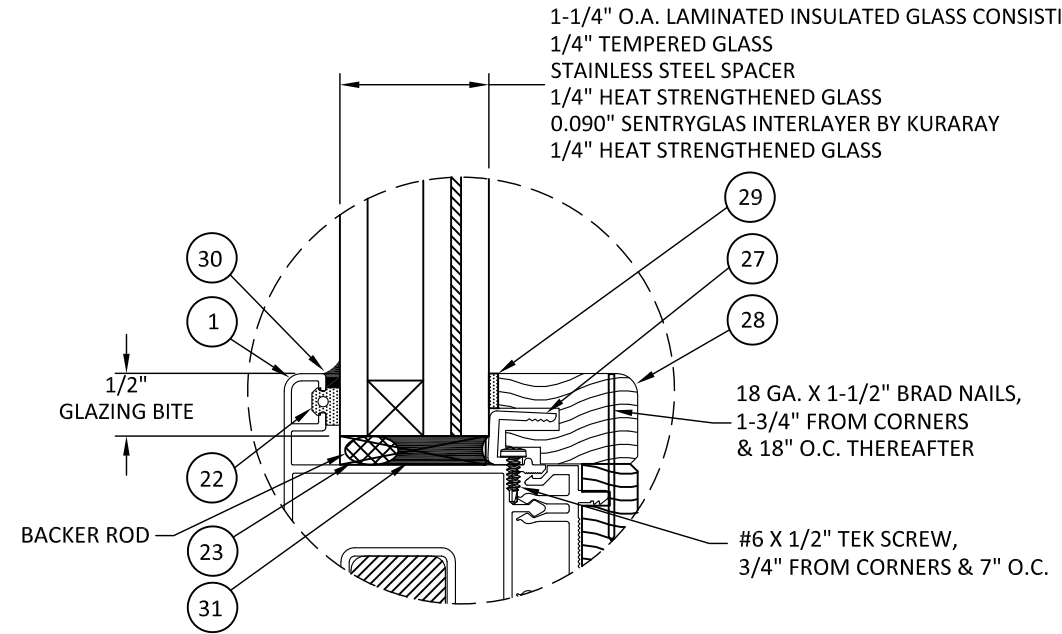
G
9 HORIZONTAL SECTION
PANEL INTERLOCK



H
9 HORIZONTAL SECTION
2X BUCK / CONCRETE/MASONRY - JAMB
3 TRACK



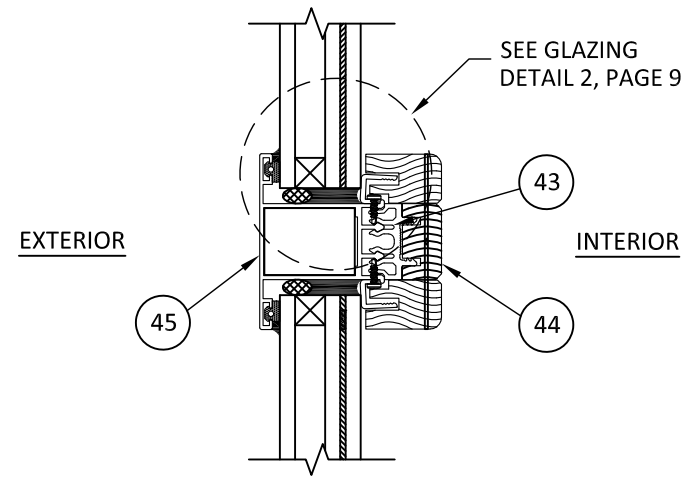
GLAZING DETAIL 1



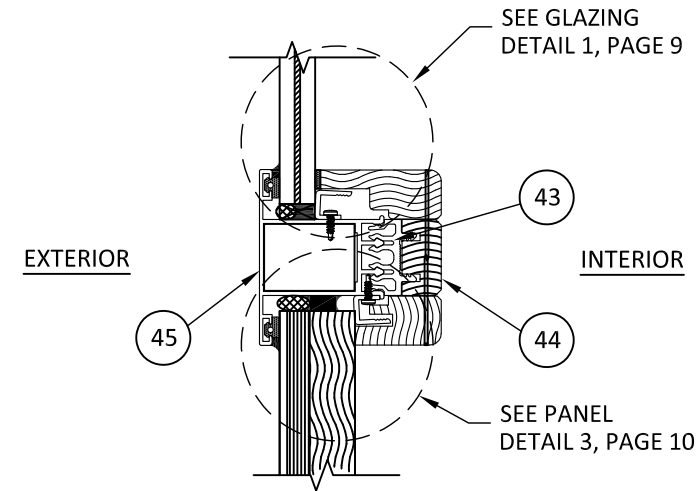
GLAZING DETAIL 2

- GLAZING NOTES:
- GLASS TYPE AND THICKNESS COMPLIES WITH ASTM E1300 REQUIREMENTS.
 - ALL GLAZING CONFIGURATIONS COMPLY WITH SAFETY GLAZING REQUIREMENTS OUTLINED IN IBC & IRC.

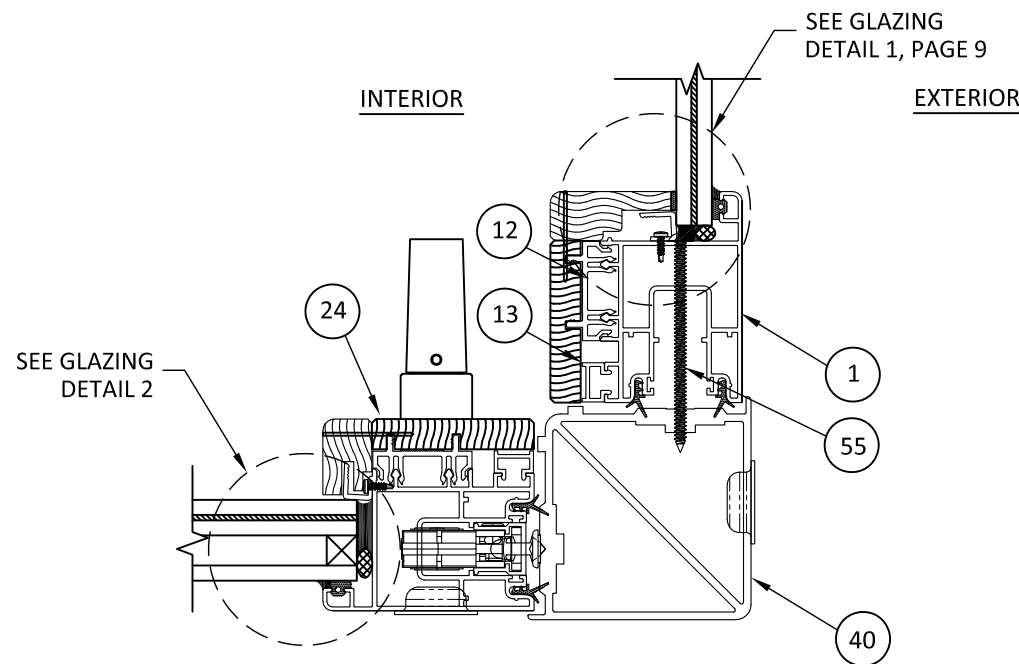
s:\projects\andersen windows\tdi-22-0105 - tdi submittal - dr877 re-evaluation - weiland awls & als-t liftslide door\dwgs\wstd007.dwg 1/17/2022 1:53 PM



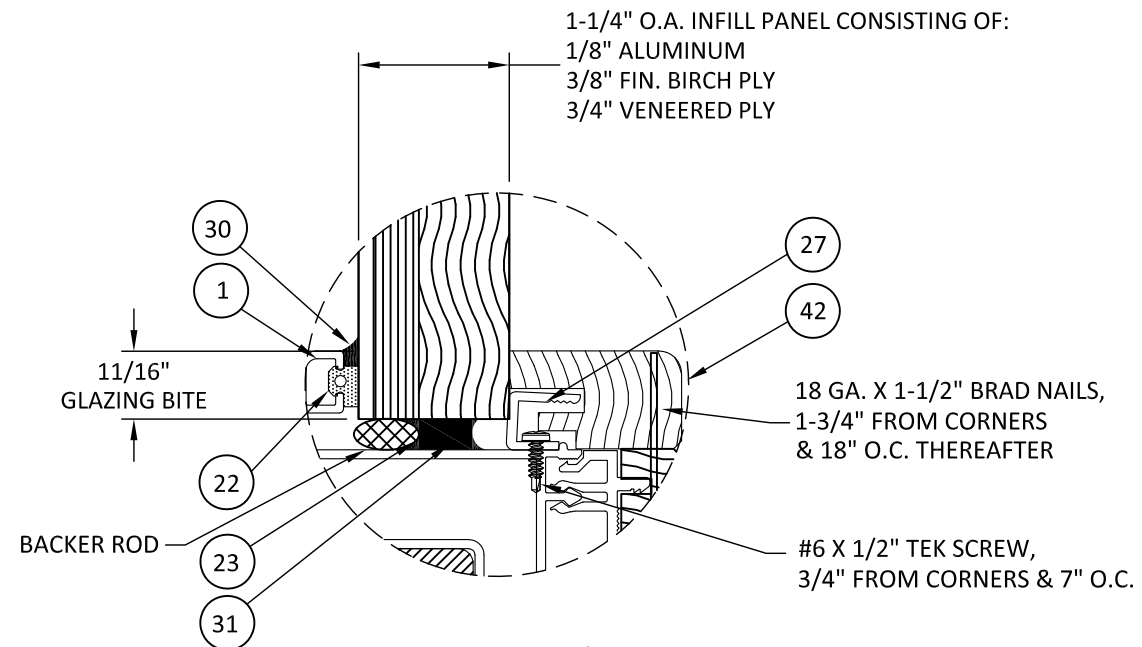
J
10 **VERTICAL SECTION**
MIDRAIL - GLASS OVER GLASS



K
10 **VERTICAL SECTION**
MIDRAIL - GLASS OVER INFILL PANEL



I
10 **HORIZONTAL SECTION**
CORNER POST



PANEL DETAIL 3
MAX. SIZE LIMITED TO 'HALF PANEL' OR LESS CONFIGURATIONS
SEE DIAGRAM ON SHEET 6



1319 ROCKY POINT DR #100
OCEANSIDE, CA 92056
PH: (760) 722.8828 FX: (760) 722.8838

TITLE: LIFTSLIDE DOOR (AWLS & ALS-T)
(IMPACT)
VERTICAL & HORIZONTAL SECTIONS
& GLAZING DETAIL 3

PREPARED BY:
BUILDING DROPS, INC.
398 E. DANIA BEACH BLVD., STE. 338
DANIA BEACH, FL 33004
PH: (954)399-8478
FAX: (954)744-4738
WEB: www.buildingdrops.com



REMARKS	BY	DATE
A: 2018 IBC&IRC UPDATE	MS	01.17.22

THE INSTALLATION DETAILS DESCRIBED HEREIN ARE GENERIC AND MAY NOT REFLECT ACTUAL CONDITIONS FOR A SPECIFIC SITE. IF SITE CONDITIONS CAUSE INSTALLATION TO DEVIATE FROM THE REQUIREMENTS DETAILED HEREIN, A LICENSED ENGINEER OR ARCHITECT SHALL PREPARE SITE SPECIFIC DOCUMENTS FOR USE WITH THIS DOCUMENT.



HERMES F. NORERO, P.E.
TEXAS P.E. No. 118471
BUILDING DROPS, INC.
398 E. DANIA BEACH BLVD. # 338
DANIA BEACH, FL 33004
TBPE FIRM No. 13734

DATE: **03.03.17**

DWG. BY: **LA** CHK. BY: **SM**

SCALE: **NTS**

DWG. #: **WSD007**

SHEET:

10

OF 18

TITLE: LIFTSIDE DOOR (AWLS & ALS-T)
(IMPACT)

VERTICAL & HORIZONTAL SECTIONS
& GLAZING DETAIL 3

PREPARED BY:
BUILDING DROPS, INC.
398 E. DANIA BEACH BLVD., STE. 338
DANIA BEACH, FL 33004
PH: (954)399-8478
FAX: (954)744-4738
WEB: www.buildingdrops.com



REMARKS	BY	DATE
A: 2018 IBC&IRC UPDATE	MS	01.17.22

THE INSTALLATION DETAILS DESCRIBED HEREIN ARE GENERIC AND MAY NOT REFLECT ACTUAL CONDITIONS FOR A SPECIFIC SITE. IF SITE CONDITIONS CAUSE INSTALLATION TO DEVIATE FROM THE REQUIREMENTS DETAILED HEREIN, A LICENSED ENGINEER OR ARCHITECT SHALL PREPARE SITE SPECIFIC DOCUMENTS FOR USE WITH THIS DOCUMENT.



HERMES F. NORERO, P.E.
TEXAS P.E. No. 118471
BUILDING DROPS, INC.
398 E. DANIA BEACH BLVD. # 338
DANIA BEACH, FL 33004
TBPE FIRM No. 13734

DATE: 03.03.17

DWG. BY: LA CHK. BY: SM

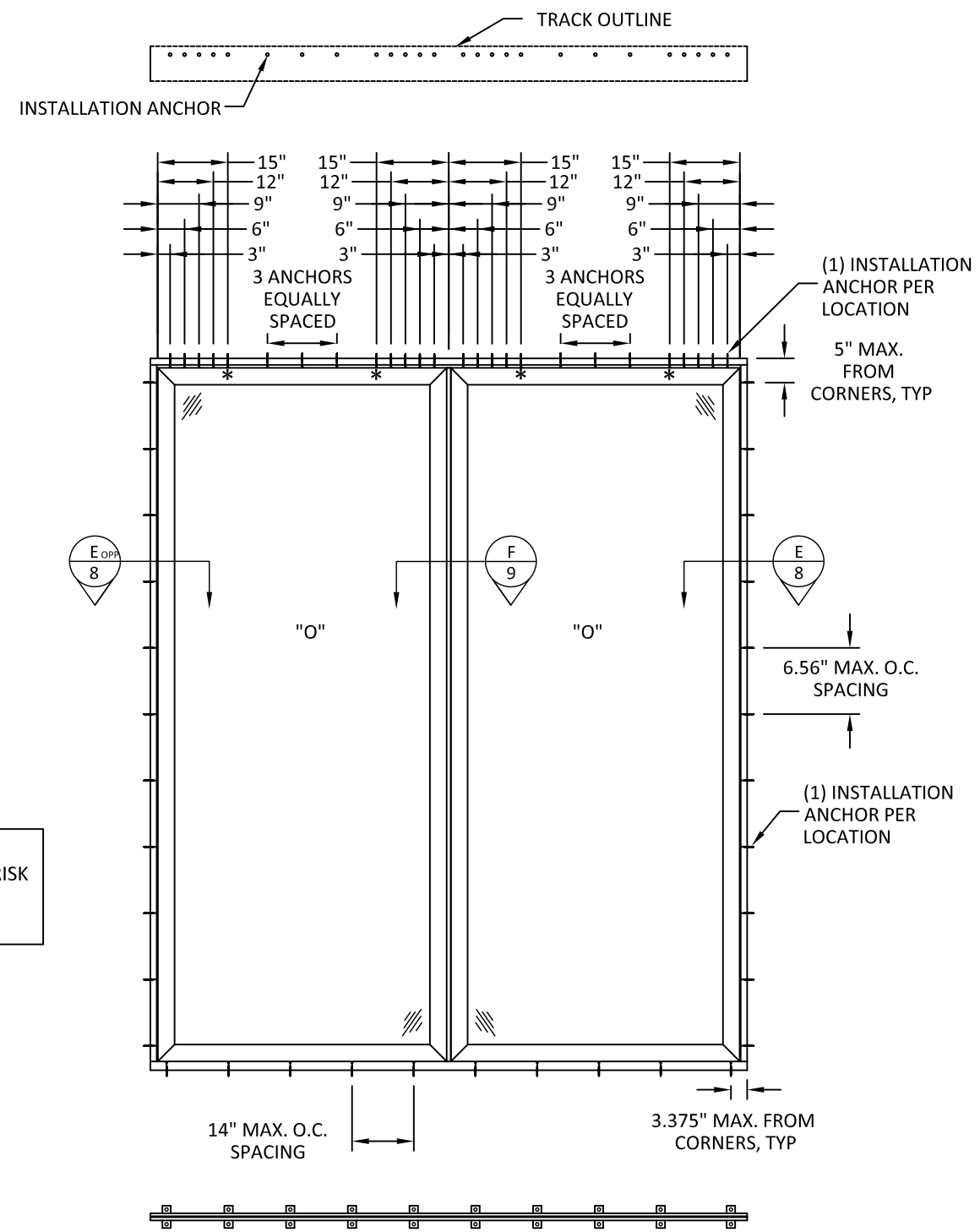
SCALE: NTS

DWG. #: WSD007

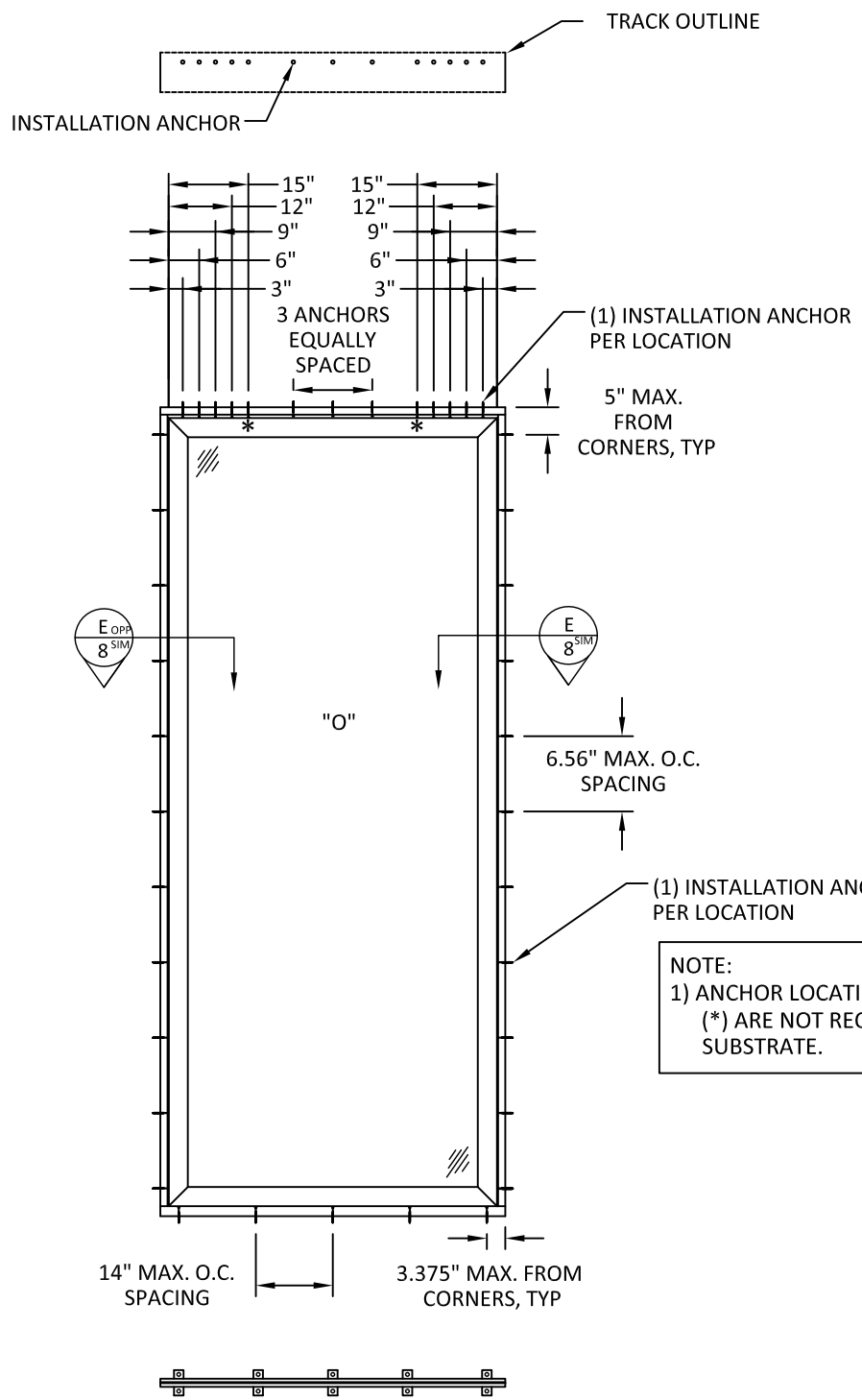
SHEET:

11

OF 18



ANCHOR LAYOUT
DOUBLE PANEL



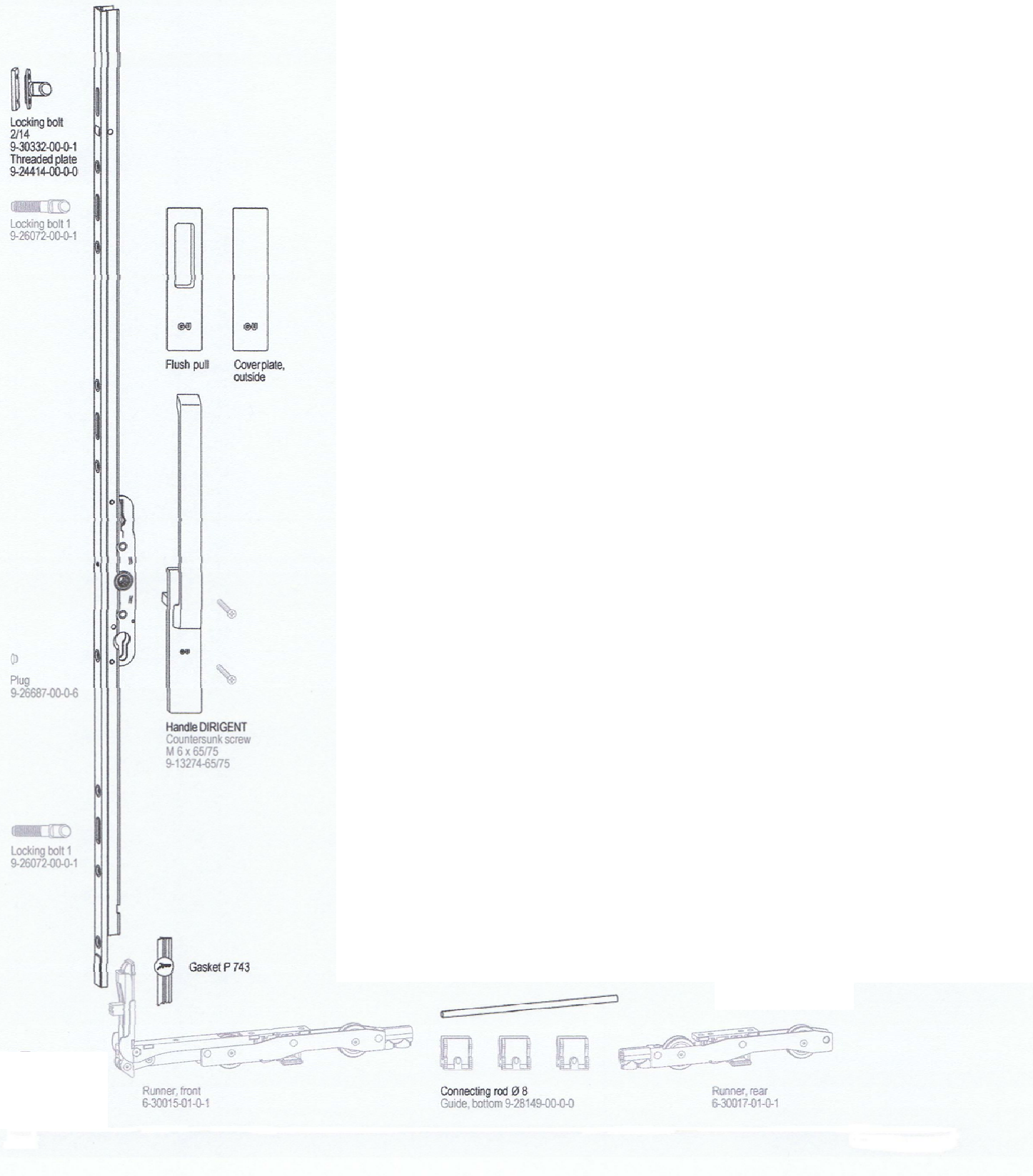
ANCHOR LAYOUT
SINGLE PANEL

NOTE:
1) ANCHOR LOCATIONS AT THE HEAD MARKED WITH AN ASTERISK (*) ARE NOT REQUIRED WHEN INSTALLING TO WOOD SUBSTRATE.

NOTE:
1) TESTED LOCK PIN HARDWARE SHALL BE USED TO ATTACH PANEL(S) TO JAMBS.
2) TESTED MEETING STILE HARDWARE SHALL BE USED ON DOUBLE FIXED DOORS.
3) ONE (1) SHOOT BOLT PER MEETING CONDITION, NONE REQUIRED AT JAMB CONDITION.

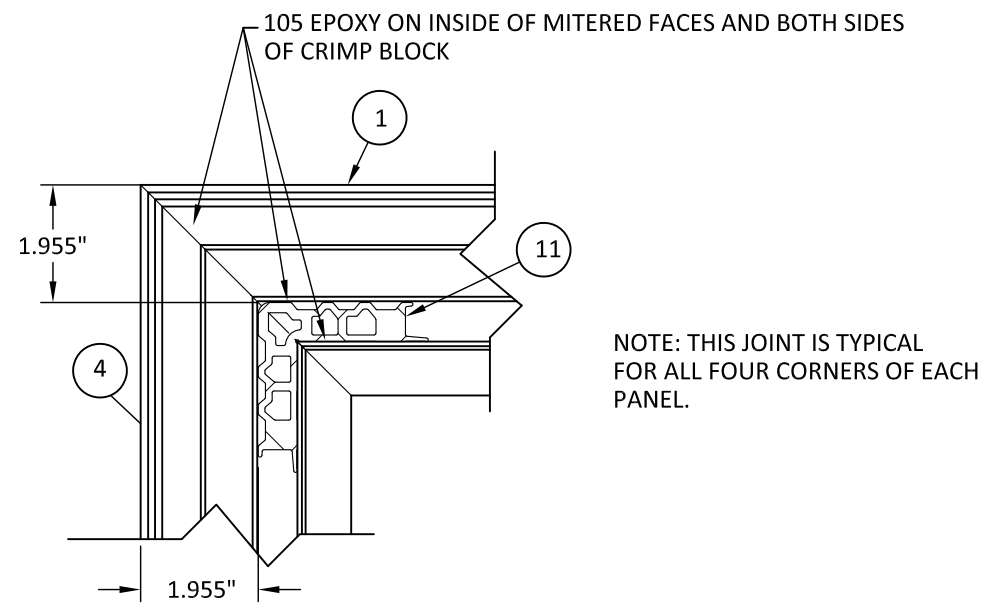
1/17/2022 1:53 PM s:\projects\andersen windows\tdi-22-0105 - tdi submittal - dr877 re-evaluation - weiland awls & als-t liftside door\dwg\wstd007.dwg

s:\projects\andersen windows\tdi-22-0105 - tdi submittal - dr877 re-evaluation - weiland awls & als-t liftslide door\dwgs\wstd007.dwg 1/17/2022 1:53 PM



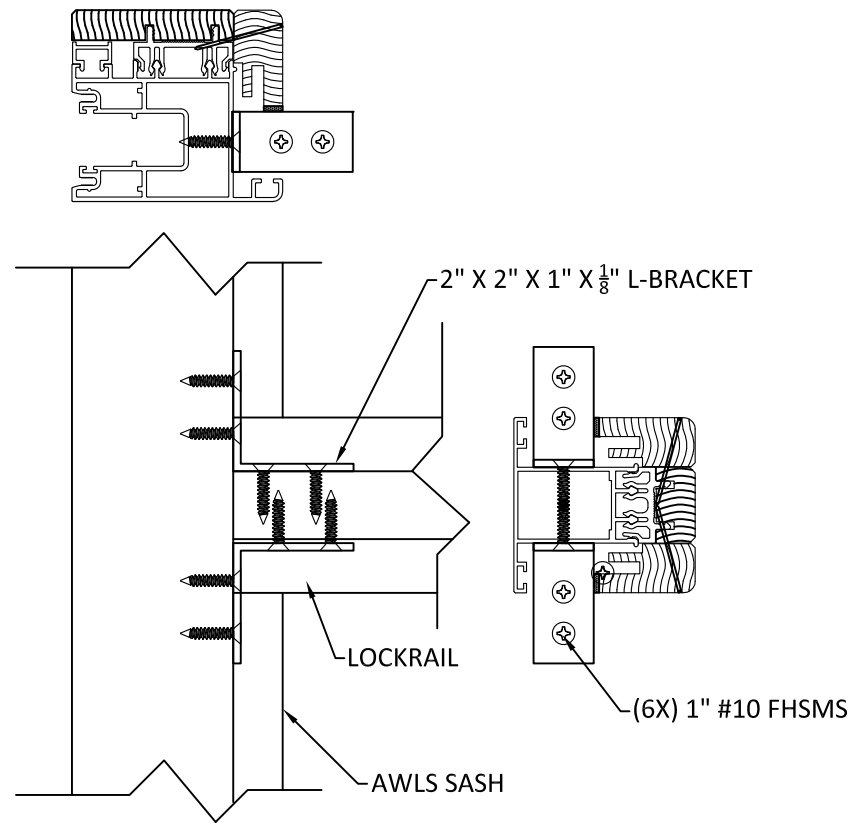
N
12

GU HARDWARE



M
12 **PANEL CORNER ASSEMBLY**

NOTE: THIS JOINT IS TYPICAL FOR ALL FOUR CORNERS OF EACH PANEL.



LOCKRAIL ATTACHMENT DETAIL



1319 ROCKY POINT DR #100
OCEANSIDE, CA 92056
PH: (760) 722.8828 FX: (760) 722.8838

TITLE: **LIFTSLIDE DOOR (AWLS & ALS-T) (IMPACT) GU HARDWARE, CORNER ASSEMBLY, & LOCKRAIL ATTACHMENT**

PREPARED BY: **BUILDING DROPS, INC.**
398 E. DANIA BEACH BLVD., STE. 338
DANIA BEACH, FL 33004
PH: (954)399-8478
FAX: (954)744.4738
WEB: www.buildingdrops.com

REMARKS	BY	DATE
A: 2018 IBC&IRC UPDATE	MS	01.17.22

THE INSTALLATION DETAILS DESCRIBED HEREIN ARE GENERIC AND MAY NOT REFLECT ACTUAL CONDITIONS FOR A SPECIFIC SITE. IF SITE CONDITIONS CAUSE INSTALLATION TO DEVIATE FROM THE REQUIREMENTS DETAILED HEREIN, A LICENSED ENGINEER OR ARCHITECT SHALL PREPARE SITE SPECIFIC DOCUMENTS FOR USE WITH THIS DOCUMENT.

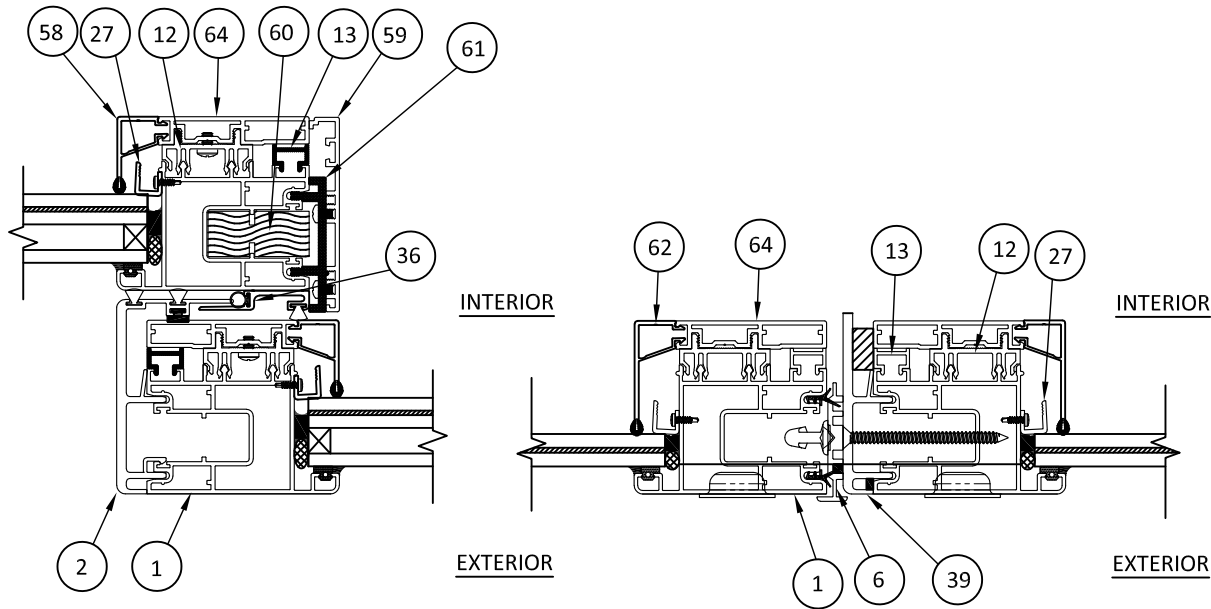


HERMES F. NORERO, P.E.
TEXAS P.E. No. 118471
BUILDING DROPS, INC
398 E. DANIA BEACH BLVD. # 338
DANIA BEACH, FL 33004
TBPE FIRM No. 13734

DATE:	03.03.17
DWG. BY:	LA
CHK. BY:	SM
SCALE:	NTS
DWG. #:	WSD007
SHEET:	12

1/17/2022 1:54 PM

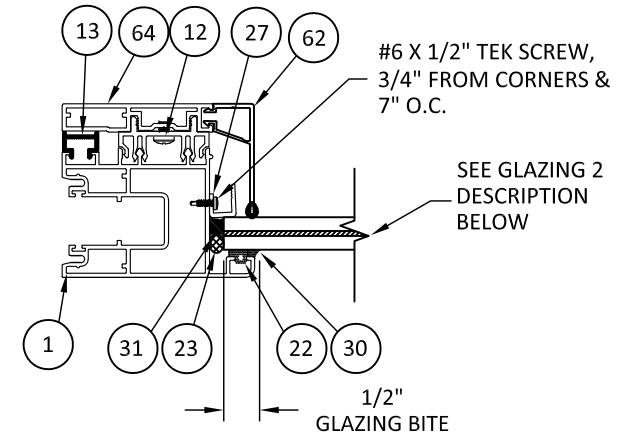
s:\projects\andersen windows\tdi-22-0105 - tdi submittal - dr877 re-evaluation - weiland awls & als-t liftslide door\dwgs\wds007.dwg



ALS-T INTERLOCK DETAIL

ALS-T MEETING STILES DETAIL

ALS-T RAIL / STILE DETAIL



ALS-T RAIL / STILE DETAIL

NOTES:
 1) DETAILS SHOWN ON THIS PAGE ARE REPRESENTATIVE OF THE COMPONENTS USED AT ALL MEMBERS OF THE LIFTSIDE DOOR.
 2) ALS-T FRAME PROFILES MAY BE USED AS AN ALTERNATIVE TO ANY AWLS FRAME IN THE CONFIGURATIONS APPROVED WITHIN THIS DOCUMENT.

GLAZING 1:
 1-1/4" O.A. LAMINATED INSULATED GLASS CONSISTING OF:
 1/4" TEMPERED GLASS
 AIR SPACE
 1/4" HEAT STRENGTHENED GLASS
 0.090" SENTRYGLAS INTERLAYER BY KURARAY
 1/4" HEAT STRENGTHENED GLASS

GLAZING 2:
 1/4" HEAT STRENGTHENED GLASS
 0.090" SENTRYGLAS INTERLAYER BY KURARAY
 1/4" HEAT STRENGTHENED GLASS

SEE SHEET 9 FOR SIMILAR DETAILS.



1319 ROCKY POINT DR #100
 OCEANSIDE, CA 92056
 PH: (760) 722.8828 FX: (760) 722.8838

TITLE: **LIFTSIDE DOOR (AWLS & ALS-T) (IMPACT)**
 ALS-T DETAILS

PREPARED BY:
BUILDING DROPS, INC.
 398 E. DANIA BEACH BLVD., STE. 338
 DANIA BEACH, FL 33004
 PH: (954)399-8478
 FAX: (954)744-4738
 WEB: www.buildingdrops.com

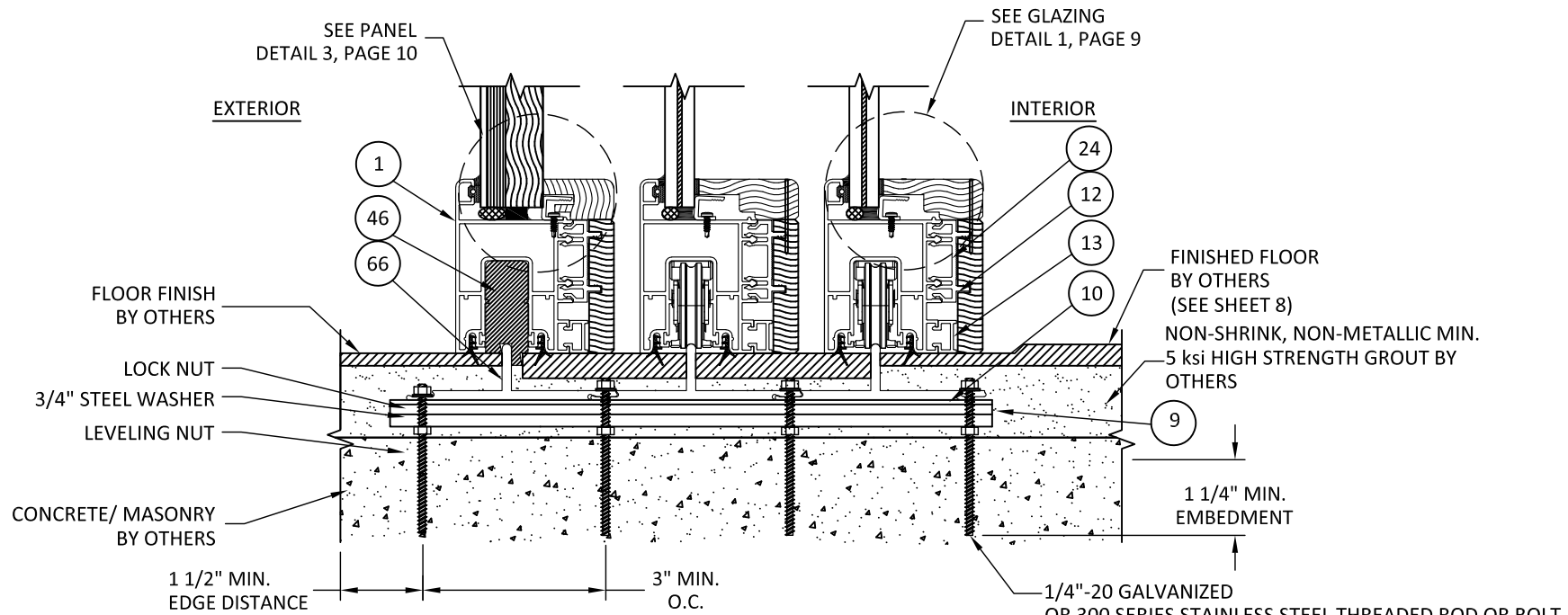
REMARKS	BY	DATE
A: 2018 IBC&IRC UPDATE	MS	01.17.22

THE INSTALLATION DETAILS DESCRIBED HEREIN ARE GENERIC AND MAY NOT REFLECT ACTUAL CONDITIONS FOR A SPECIFIC SITE. IF SITE CONDITIONS CAUSE INSTALLATION TO DEVIATE FROM THE REQUIREMENTS DETAILED HEREIN, A LICENSED ENGINEER OR ARCHITECT SHALL PREPARE SITE SPECIFIC DOCUMENTS FOR USE WITH THIS DOCUMENT.



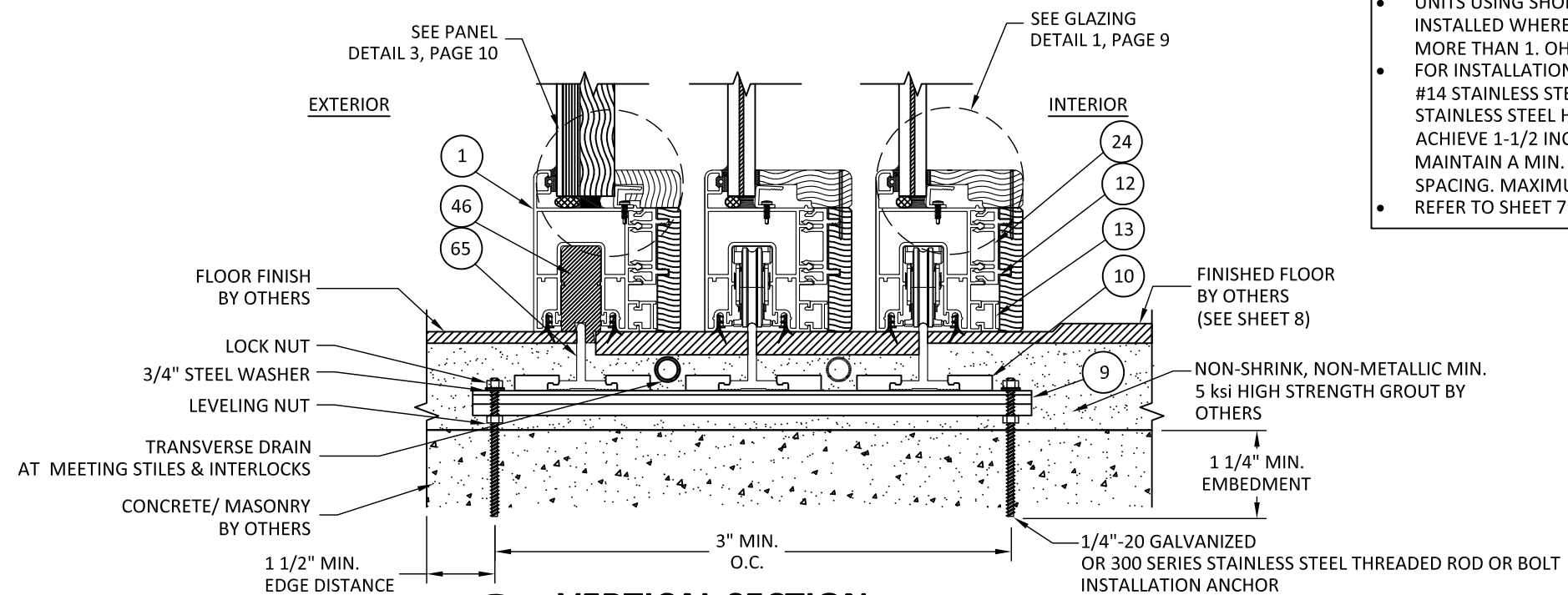
HERMES F. NORERO, P.E.
 TEXAS P.E. No. 118471
 BUILDING DROPS, INC
 398 E. DANIA BEACH BLVD. # 338
 DANIA BEACH, FL 33004
 TBPE FIRM No. 13734

DATE:	03.03.17
DWG. BY:	LA
CHK. BY:	SM
SCALE:	NTS
DWG. #:	WSD007
SHEET:	13



O
14
VERTICAL SECTION
CONCRETE/ MASONRY - SILL
3 TRACK - SHORT TRACK
(WITHOUT DRAINAGE)

FINISHED FLOOR BY OTHERS (SEE SHEET 8)
NON-SHRINK, NON-METALLIC MIN. 5 ksi HIGH STRENGTH GROUT BY OTHERS
1 1/4" MIN. EMBEDMENT
1/4"-20 GALVANIZED OR 300 SERIES STAINLESS STEEL THREADED ROD OR BOLT
INSTALLATION ANCHOR EMBEDDED INTO APPROVED ADHESIVE, HILTI HIT-HY 200, HILTI HIT-HY 150 MAX-SD, POWERS AC100+ GOLD, OR SIMPSON AT-XP



P
14
VERTICAL SECTION
CONCRETE/ MASONRY - SILL
3 TRACK - FLUSH TRACK
(WITH TRANSVERSE DRAINAGE ONLY)

- UNITS USING SHORT TRACK AND FLUSH TRACK SHALL BE INSTALLED WHERE OVERHANG (OH) RATIO IS EQUAL TO OR MORE THAN 1. OH RATIO = OH LENGTH/OH HEIGHT.
- FOR INSTALLATION INTO PRESSURE TREATED WOOD AT SILL USE #14 STAINLESS STEEL WOOD SCREWS OR 1/4" GALVANIZED OR STAINLESS STEEL HANGER BOLT OF SUFFICIENT LENGTH TO ACHIEVE 1-1/2 INCH MINIMUM EMBEDMENT. ANCHORS SHALL MAINTAIN A MIN. EDGE DISTANCE OF 3/4" & 3" MIN. O.C. SPACING. MAXIMUM SHIM SPACE TO BE 1/2".
- REFER TO SHEET 7 FOR TYPICAL FULL DRAINAGE TRACK DETAIL.

TITLE: LIFTSIDE DOOR (AWLS & ALS-T) (IMPACT)
TYPICAL FLUSH TRACK AND SHORT TRACK DETAILS
PREPARED BY: BUILDING DROPS, INC.
398 E. DANIA BEACH BLVD., STE. 338
DANIA BEACH, FL 33004
PH: (954)399-8478
FAX: (954)744-4738
WEB: www.buildingdrops.com

REMARKS	BY	DATE
A: 2018 IBC&IRC UPDATE	MS	01.17.22

THE INSTALLATION DETAILS DESCRIBED HEREIN ARE GENERIC AND MAY NOT REFLECT ACTUAL CONDITIONS FOR A SPECIFIC SITE. IF SITE CONDITIONS CAUSE INSTALLATION TO DEVIATE FROM THE REQUIREMENTS DETAILED HEREIN, A LICENSED ENGINEER OR ARCHITECT SHALL PREPARE SITE SPECIFIC DOCUMENTS FOR USE WITH THIS DOCUMENT.



HERMES F. NORERO, P.E.
TEXAS P.E. No. 118471
BUILDING DROPS, INC.
398 E. DANIA BEACH BLVD. # 338
DANIA BEACH, FL 33004
TBPE FIRM No. 13734

DATE:	03.03.17	
DWG. BY:	LA	CHK. BY: SM
SCALE:	NTS	
DWG. #:	WSD007	
SHEET:	14	

s:\projects\andersen windows\tdi-22-0105 - tdi submittal - dr877 re-evaluation - weiland awls & als-t liftslide door\dwgs\wds007.dwg 1/17/2022 1:54 PM

BILL OF MATERIALS

ITEM NO.	DESCRIPTION	MATERIAL	PART NO.
1	LS STILE / RAIL	6063-T5	1020
2	LS REAR INTERLOCK EXTRUSION	6063-T5	1240
3	LS KEY EXTRUSION	6063-T5	1023
4	LS EXTERIOR FASCIA TOP EXTRUSION	6063-T5	1244
5	NOT USED	-	-
6	LS MEETING STILE ADAPTOR	6063-T5	1026
7	LS FOLLOWER EXTRUSION	6063-T5	1035
8	LS DRAINAGE TRACK	6005-T5	1107
9	LS BRIDGE	6063-T5	1037
10	LS BRIDGE CLIP	6063-T5	20413-01
11	AWLS CRIMP BLOCK	6063-T5	1181
12	LARGE CLIP	PVC	40126
13	H-BAR	PVC	40146
14	TOP GUIDE	6063-T5	1018
15	JAMB EXTENSION	6063-T5	1017
16	JACKING SCREWS	STEEL	20228
17	JACKING SCREWS	PLASTIC	20229
18	HURRICANE SHOOT BOLT ASSEMBLY	ALUMINUM, STEEL	-
19	105 EPOXY RESIN	EPOXY	-
20	NOT USED		
21	POCKET INTERLOCK	6063-T5	1019
22	L/S GLAZING GASKET	EPDM	40106
23	SETTING BLOCKS 1/4" - 1 5/8" X 2"	NEOPRENE	NSB 85D
24	WOOD CLADDING	WOOD	5001
25	INTERIOR WOOD FASCIA	WOOD	5006
26	REAR WOOD CLADDING	WOOD	5005
27	J-CLIP (ATTACHED TO PANEL WITH #6 X 1/2" TEK SCREWS, 3/4" FROM CORNERS & 7" O.C.)	PVC	40201
28	I.G. WOOD GLAZING BEAD	WOOD	5003Cm
29	ADHESIVE FOAM GASKET	FOAM	
30	DOW 995 OR DOW 983 2-PART CAP BEAD	SILICONE	
31	DOW 995 OR DOW 983 2-PART	SILICONE	
32	LOCKING AWLS JAMB EXTRUSION	6063-T5	1022
33	SKIRT	WOOD	
34	BLOCK, SKIRT	WOOD	5012
35	TRIM, SKIRT, GROOVED	WOOD	5011
36	INTERLOCK FACE	6063-T5	1247
37	SKIRT BRACKET	6063-T5	20922
38	MEETING STILE CAP	WOOD	
39	STRENGTHENED MEETING STILE ADAPTOR	6063-T5	
40	90° CORNER POST	6063-T5	
41	MONO. WOOD GLAZING BEAD	WOOD	5002m
42	INFILL WOOD GLAZING BEAD	WOOD	
43	SMALL CLIP	PVC	40150
44	LOCKRAIL INTERIOR CLADDING	WOOD	5007
45	LOCKRAIL	6063-T5	1034

ITEM NO.	DESCRIPTION	MATERIAL	PART NO.
46	BLOCK, ANTI-DERAILEUR, FIXED, DRAINAGE	6061-T5	SHOP 205
47	#10 x 1-1/2" FHSMS		
48	#10 x 2-1/2" FHSMS		
49	#10-24 x 1-1/4" FHMS WITH RIVET NUT		
50	#8 x 1-1/2" FHSMS		
51	#8 x 2" FHSMS		
52	#12 x 3" FHSMS		
53	#8-32 x 1/2" PHTFS		
54	#6 SS FHSMS		
55	#10 x 3-1/2" PHSMS		
56	#10 - 32 x 3/4" F POINT SELF-TAPPING SCREWS		
ALS-T COMPONENTS			
57	NOT USED		
58	ALS-T I.G. GLASS STOP	6063-T5	
59	ALUMINUM REAR COVER	6063-T5	
60	LS WOOD BLOCK	WOOD	
61	CLIP	PVC	
62	ALS-T MONO. GLASS STOP	6063-T5	
63	ALUMINUM STRIP	6063-T5	
64	ALUMINUM CLADDING	6063-T5	
ALTERNATE TRACK COMPONENTS			
65	FLUSH TRACK	6005-T5	
66	SHORT TRACK	6005-T5	



1319 ROCKY POINT DR #100
OCEANSIDE, CA 92056
PH: (760) 722.8828 FX: (760) 722.8838

TITLE: LIFTSLIDE DOOR (AWLS & ALS-T)
(IMPACT)

BILL OF MATERIAL

PREPARED BY:
BUILDING DROPS, INC.
398 E. DANIA BEACH BLVD., STE. 338
DANIA BEACH, FL 33004
PH: (954)399-8478
FAX: (954)744-4738
WEB: www.buildingdrops.com



REMARKS	BY	DATE
A: 2018 IBC&IRC UPDATE	MS	01.17.22

THE INSTALLATION DETAILS DESCRIBED HEREIN ARE GENERIC AND MAY NOT REFLECT ACTUAL CONDITIONS FOR A SPECIFIC SITE. IF SITE CONDITIONS CAUSE INSTALLATION TO DEVIATE FROM THE REQUIREMENTS DETAILED HEREIN, A LICENSED ENGINEER OR ARCHITECT SHALL PREPARE SITE SPECIFIC DOCUMENTS FOR USE WITH THIS DOCUMENT.



HERMES F. NORERO, P.E.
TEXAS P.E. No. 118471
BUILDING DROPS, INC
398 E. DANIA BEACH BLVD. # 338
DANIA BEACH, FL 33004
TBPE FIRM No. 13734

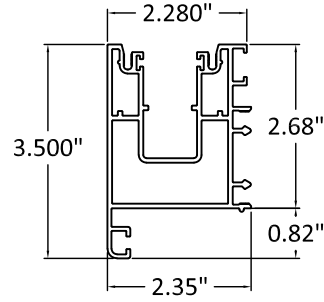
DATE:	03.03.17
DWG. BY:	LA
CHK. BY:	SM
SCALE:	NTS
DWG. #:	WSD007

SHEET:
15
OF 18

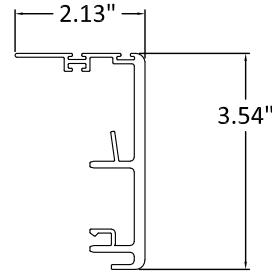
1/17/2022 1:54 PM

s:\projects\andersen windows\tdi-22-0105 - tdi submittal - dr877 re-evaluation - weiland awls & als-t liftslide door\dwgs\wstd007.dwg

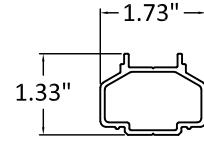
1 AWLS STILE / RAIL
6063-T5
TYPICAL WALL
THICKNESS: .075"



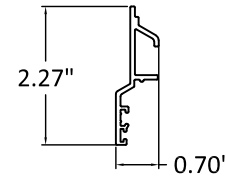
2 AWLS REAR INTERLOCK 6063-T5
TYPICAL WALL
THICKNESS: .175"



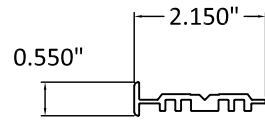
3 LS KEY
6063-T5
TYPICAL WALL
THICKNESS: .075"



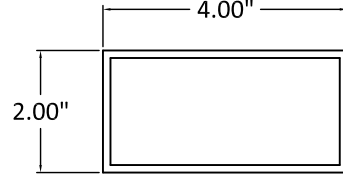
4 TOP EXTERIOR FASCIA
6063-T5
TYPICAL WALL
THICKNESS: .070"



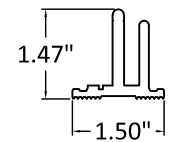
6 LS MEETING STILE ADAPTER
6063-T5
TYPICAL WALL
THICKNESS: .060"



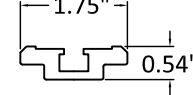
7 LS FOLLOWER
6063-T5
TYPICAL WALL
THICKNESS: .125"



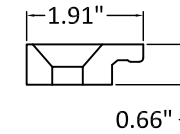
8 DRAINAGE TRACK
6005-T5
TYPICAL WALL
THICKNESS: .1875"



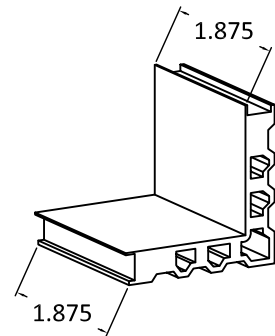
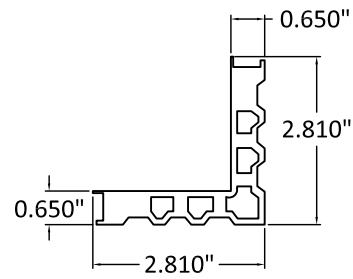
9 LS BRIDGE
6063-T5
TYPICAL WALL
THICKNESS: .137"



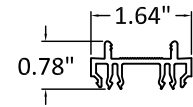
10 LS BRIDGE CLIP
6063-T5



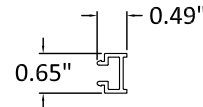
11 AWLS CRIMP BLOCK
6063-T5



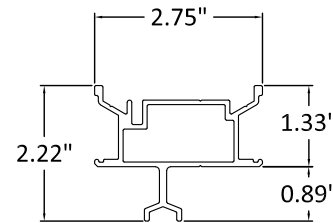
12 LARGE CLIP
PVC



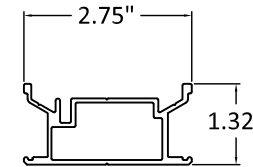
13 H-BAR
PVC



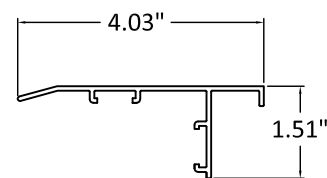
14 TOP GUIDE
6063-T5
TYPICAL WALL
THICKNESS: .075"



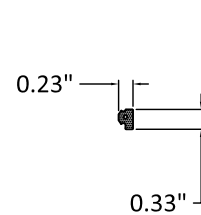
15 JAMB EXTENSION
6063-T5
TYPICAL WALL
THICKNESS: .075"



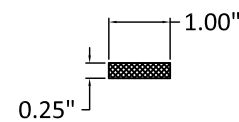
21 POCKET INTERLOCK
6063-T5 ALUMINUM
TYPICAL WALL
THICKNESS: .08"



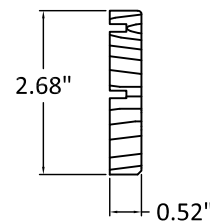
22 L/S GLAZING GASKET
EPDM



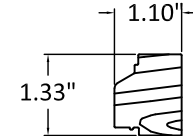
23 SETTING BLOCK
NEOPRENE



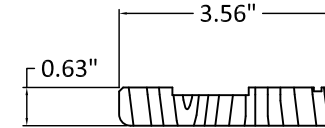
24 WOOD CLADDING
WOOD



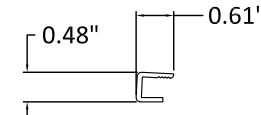
25 INTERIOR WOOD FASCIA
WOOD



26 REAR WOOD CLADDING
WOOD



27 J-CLIP
PVC



1319 ROCKY POINT DR #100
OCEANSIDE, CA 92056
PH: (760) 722.8828 FX: (760) 722.8838

TITLE: LIFTSLIDE DOOR (AWLS & ALS-T)
(IMPACT)

COMPONENTS

PREPARED BY:
BUILDING DROPS, INC.
398 E. DANIA BEACH BLVD., STE. 338
DANIA BEACH, FL 33004
PH: (954)399-8478
FAX: (954)744-4738
WEB: www.buildingdrops.com



REMARKS	BY	DATE
A: 2018 IBC&IRC UPDATE	MS	01.17.22

THE INSTALLATION DETAILS DESCRIBED HEREIN ARE GENERIC AND MAY NOT REFLECT ACTUAL CONDITIONS FOR A SPECIFIC SITE. IF SITE CONDITIONS CAUSE INSTALLATION TO DEVIATE FROM THE REQUIREMENTS DETAILED HEREIN, A LICENSED ENGINEER OR ARCHITECT SHALL PREPARE SITE SPECIFIC DOCUMENTS FOR USE WITH THIS DOCUMENT.

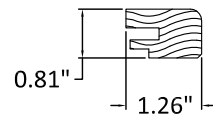


HERMES F. NORERO, P.E.
TEXAS P.E. No. 118471
BUILDING DROPS, INC
398 E. DANIA BEACH BLVD. # 338
DANIA BEACH, FL 33004
TBPE FIRM No. 13734

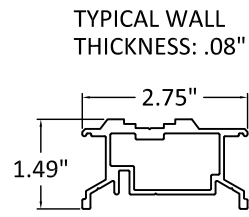
DATE:	03.03.17
DWG. BY:	LA
CHK. BY:	SM
SCALE:	NTS
DWG. #:	WSD007
SHEET:	16

s:\projects\anderson windows\tdi-22-0105 - tdi submittal - dr877 re-evaluation - weiland awls & als-t liftslide door\dwgs\wstd007.dwg 1/17/2022 1:54 PM

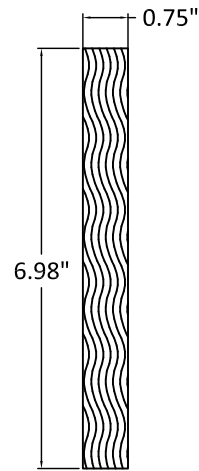
28 I.G. GLAZING BEAD WOOD



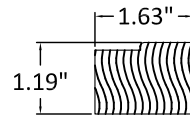
32 LOCKING AWLS JAMB EXT. 6063-T5



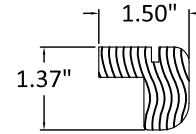
33 SKIRT WOOD



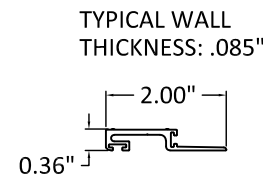
34 BLOCK, SKIRT WOOD



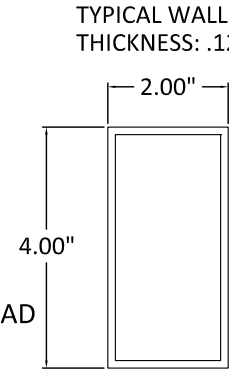
35 TRIM, SKIRT, GROOVED WOOD



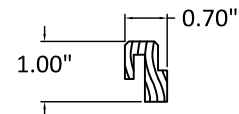
36 INTERLOCK FACE 6063-T5



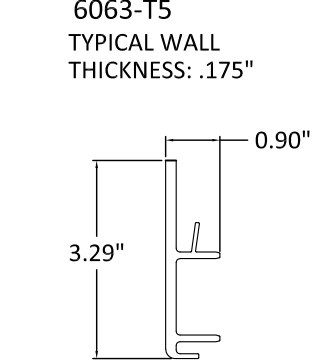
37 SKIRT BRACKET 6063-T5



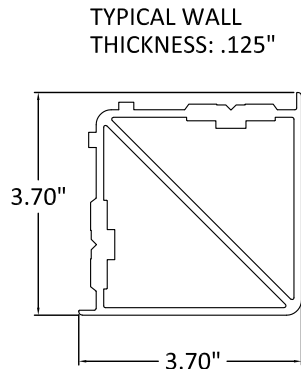
38 MEETING STILE CAP WOOD



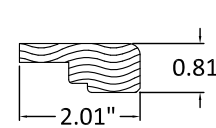
39 STRENGTHENED MEETING STILE ADAPTOR 6063-T5



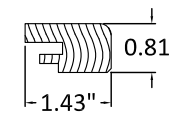
40 90° CORNER POST 6063-T5



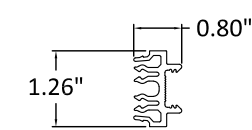
41 MONO. GLAZING BEAD WOOD



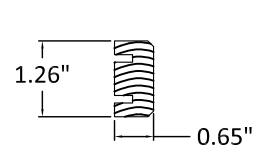
42 INFILL PANEL GLAZING BEAD WOOD



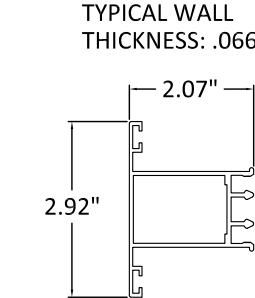
43 SMALL CLIP PVC



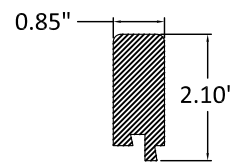
44 LOCKRAIL INT. CLADDING WOOD



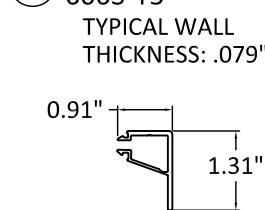
45 LOCKRAIL 6063-T5



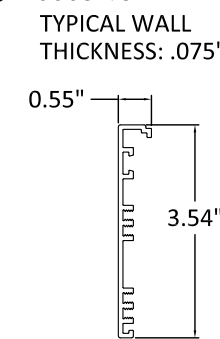
46 BLOCK, ANTI-DERAILLEUR, FIXED, DRAINAGE 6061-T5



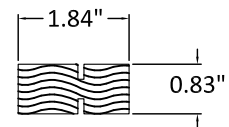
58 ALS-T I.G. GLASS STOP 6063-T5



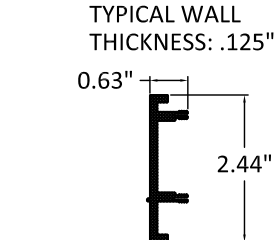
59 ALUMINUM REAR COVER 6063-T5



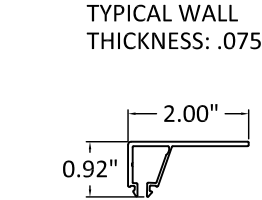
60 WOOD BLOCK 6063-T5



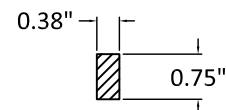
61 CLIP PVC



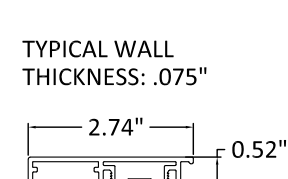
62 ALS-T MONO. GLASS STOP 6063-T5



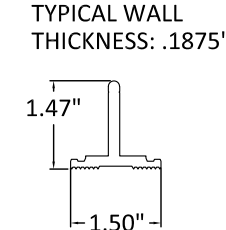
63 ALUMINUM STRIP 6063-T5



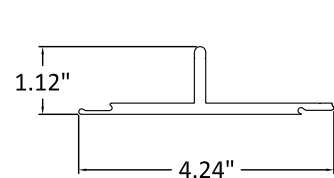
64 ALUMINUM CLADDING 6063-T5



65 FLUSH TRACK 6005-T5



66 SHORT TRACK 6005-T5



1319 ROCKY POINT DR #100
OCEANSIDE, CA 92056
PH: (760) 722.8828 FX: (760) 722.8838

TITLE: LIFTSLIDE DOOR (AWLS & ALS-T)
(IMPACT)

COMPONENTS

PREPARED BY:
BUILDING DROPS, INC.
398 E. DANIA BEACH BLVD., STE. 338
DANIA BEACH, FL 33004
PH: (954)399-8478
FAX: (954)744-4738
WEB: www.buildingdrops.com



REMARKS	BY	DATE
A: 2018 IBC&IRC UPDATE	MS	01.17.22

THE INSTALLATION DETAILS DESCRIBED HEREIN ARE GENERIC AND MAY NOT REFLECT ACTUAL CONDITIONS FOR A SPECIFIC SITE. IF SITE CONDITIONS CAUSE INSTALLATION TO DEVIATE FROM THE REQUIREMENTS DETAILED HEREIN, A LICENSED ENGINEER OR ARCHITECT SHALL PREPARE SITE SPECIFIC DOCUMENTS FOR USE WITH THIS DOCUMENT.



HERMES F. NORERO, P.E.
TEXAS P.E. No. 118471
BUILDING DROPS, INC
398 E. DANIA BEACH BLVD. # 338
DANIA BEACH, FL 33004
TBPE FIRM No. 13734

DATE: 03.03.17

DWG. BY: LA
CHK. BY: SM

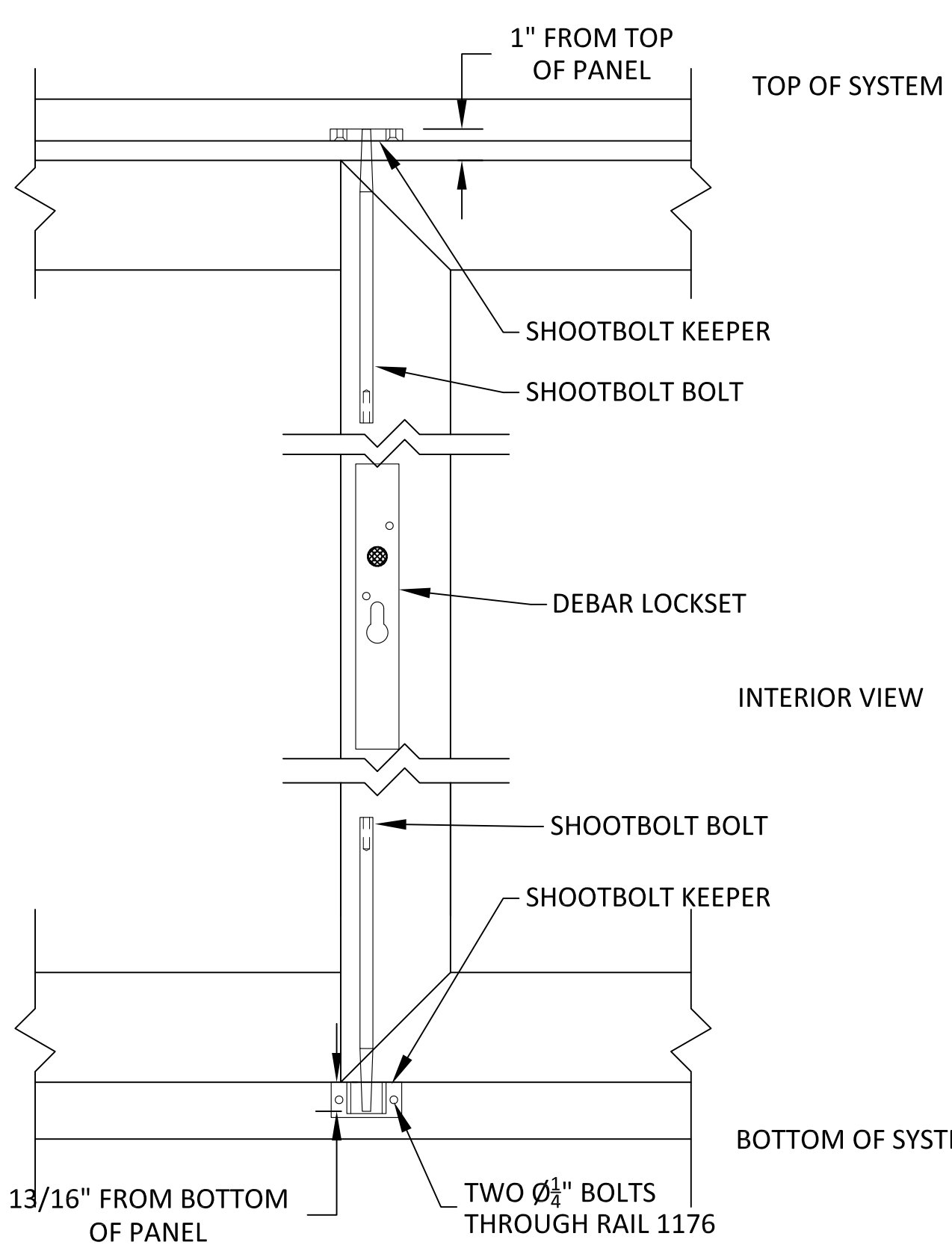
SCALE: NTS

DWG. #: WSD007

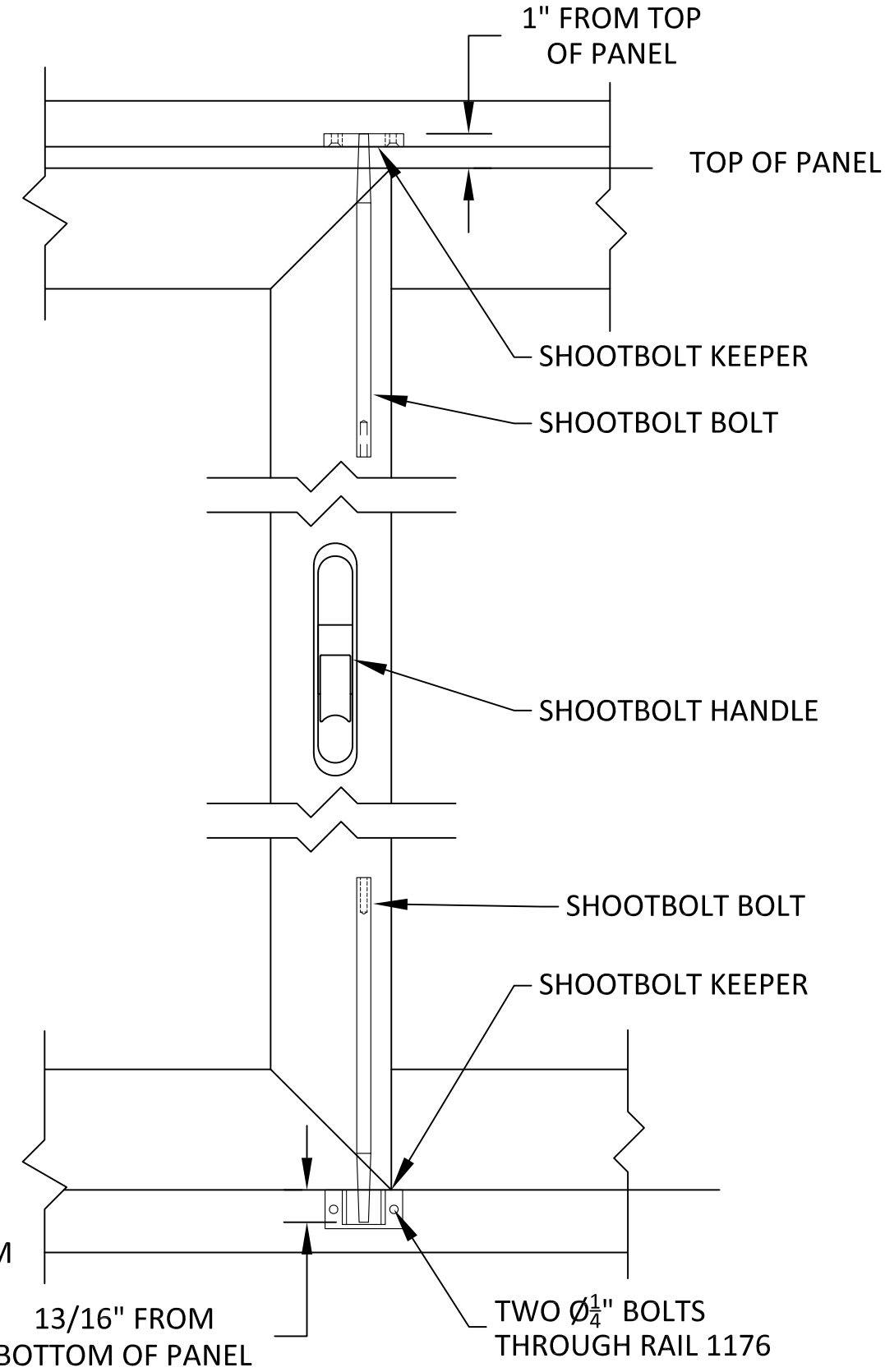
SHEET: 17

OF 18

s:\projects\andersen windows\tdi-22-0105 - tdi submittal - dr877 re-evaluation - weiland awls & als-t liftslide door\dwg\wds007.dwg 1/17/2022 1:54 PM



DEBAR LOCKSET OPTION



STANDARD LOCKSET OPTION

18 HURRICANE SHOOT BOLT ASSEMBLY



1319 ROCKY POINT DR #100
 OCEANSIDE, CA 92056
 PH: (760) 722.8828 FX: (760) 722.8838

TITLE: LIFTSLIDE DOOR (AWLS & ALS-T) (IMPACT)
HURRICANE SHOOT BOLT ASSEMBLY

PREPARED BY: BUILDING DROPS, INC.
 398 E. DANIA BEACH BLVD., STE. 338
 DANIA BEACH, FL 33004
 PH: (954)399-8478
 FAX: (954)744-4738
 WEB: www.buildingdrops.com

REMARKS	BY	DATE
A: 2018 IBC&IRC UPDATE	MS	01.17.22

THE INSTALLATION DETAILS DESCRIBED HEREIN ARE GENERIC AND MAY NOT REFLECT ACTUAL CONDITIONS FOR A SPECIFIC SITE. IF SITE CONDITIONS CAUSE INSTALLATION TO DEVIATE FROM THE REQUIREMENTS DETAILED HEREIN, A LICENSED ENGINEER OR ARCHITECT SHALL PREPARE SITE SPECIFIC DOCUMENTS FOR USE WITH THIS DOCUMENT.



HERMES F. NORERO, P.E.
 TEXAS P.E. No. 118471
 BUILDING DROPS, INC.
 398 E. DANIA BEACH BLVD. # 338
 DANIA BEACH, FL 33004
 TBPE FIRM No. 13734

DATE: 03.03.17
DWG. BY: LA **CHK. BY:** SM
SCALE: NTS
DWG. #: WSD007
SHEET:

18

OF 18