

DEANSTEEL MANUFACTURING COMPANY

STEEL FLUSH OUTSWING DOORS WITH DETEX HARDWARE



931 S. Flores St.
San Antonio, Texas 78204

PH: (210) 226-8271
FX: (210) 226-0913

INSTALLATION NOTES:

1. ONE (1) INSTALLATION ANCHOR IS REQUIRED AT EACH ANCHOR LOCATION SHOWN, UNLESS OTHERWISE STATED.
2. THE NUMBER OF INSTALLATION ANCHORS DEPICTED IS THE MINIMUM NUMBER OF ANCHORS TO BE USED FOR PRODUCT INSTALLATION.
3. INSTALL INDIVIDUAL INSTALLATION ANCHORS WITHIN A TOLERANCE OF ±1/16 INCH OF THE DEPICTED LOCATION IN THE ANCHOR LAYOUT DETAIL (I.E., WITHOUT CONSIDERATION OF TOLERANCES). TOLERANCES ARE NOT CUMULATIVE FROM ONE INSTALLATION ANCHOR TO THE NEXT.
4. FOR INSTALLATION INFORMATION AND ANCHOR LAYOUTS REFER TO SHEET 3 SEE SHEET 5 FOR ANCHOR DETAILS.
5. MINIMUM EMBEDMENT AND EDGE DISTANCE EXCLUDE WALL FINISHES, INCLUDING BUT NOT LIMITED TO STUCCO, FOAM, BRICK VENEER, AND SIDING.
6. INSTALLATION ANCHORS AND ASSOCIATED HARDWARE MUST BE MADE OF CORROSION RESISTANT MATERIAL OR HAVE A CORROSION RESISTANT COATING.
7. FOR GROUT FILLED BLOCK, DO NOT INSTALL INSTALLATION ANCHORS INTO MORTAR JOINTS. EDGE DISTANCE IS MEASURED FROM FREE EDGE OF BLOCK OR EDGE OF MORTAR JOINT INTO FACE SHELL OF BLOCK.
8. INSTALLATION ANCHORS SHALL BE INSTALLED IN ACCORDANCE WITH ANCHOR MANUFACTURER'S INSTALLATION INSTRUCTIONS, AND ANCHORS SHALL NOT BE USED IN SUBSTRATES WITH STRENGTHS LESS THAN THE MINIMUM STRENGTH SPECIFIED BY THE ANCHOR MANUFACTURER.
9. STEEL COMPONENTS SHALL BE COATED OR PROVIDED WITH CORROSION RESISTANCE PROTECTION IN CONFORMANCE WITH THE MATERIAL PROTECTION PROVISIONS.
10. INSTALLATION ANCHOR CAPACITIES FOR PRODUCTS HEREIN ARE BASED ON SUBSTRATE MATERIALS WITH THE FOLLOWING PROPERTIES:
 - A. WOOD - MINIMUM SPECIFIC GRAVITY OF 0.42 (SPRUCE PINE FIR OR BETTER).
 - B. CONCRETE - MINIMUM COMPRESSIVE STRENGTH OF 3000 PSI.
 - C. GROUT-FILLED CMU - UNIT STRENGTH CONFORMS TO ASTM C-90 & GROUT CONFORMS TO ASTM C 476. GROUT SHALL HAVE MINIMUM COMPRESSIVE STRENGTH OF 2500 PSI.
 - D. STEEL - MINIMUM 1/4" THICK STEEL (MIN. Fy = 36 KSI)

GENERAL NOTES:

1. THE PRODUCT SHOWN HEREIN IS DESIGNED AND MANUFACTURED TO COMPLY WITH 2018 INTERNATIONAL BUILDING CODE (IBC) AND INTERNATIONAL RESIDENTIAL CODE (IRC), AND HAS BEEN EVALUATED TO THE FOLLOWING:
 - ASTM E330-14
 - ASTM E1886-13a
 - ASTM E1996-17
2. ADEQUACY OF THE EXISTING STRUCTURAL CONCRETE/MASONRY, 2X AND STEEL STUD FRAMING AS A MAIN WIND FORCE RESISTING SYSTEM CAPABLE OF WITHSTANDING AND TRANSFERRING APPLIED PRODUCT LOADS TO THE FOUNDATION IS THE RESPONSIBILITY OF THE ENGINEER OR ARCHITECT OF RECORD FOR THE PROJECT OF INSTALLATION.
3. 2X BUCKS (WHEN USED) SHALL BE DESIGNED AND ANCHORED TO PROPERLY TRANSFER ALL LOADS TO THE STRUCTURE. BUCK DESIGN AND INSTALLATION IS THE RESPONSIBILITY OF THE ENGINEER OR ARCHITECT OF RECORD FOR THE PROJECT OF INSTALLATION.
4. THE INSTALLATION DETAILS DESCRIBED HEREIN ARE GENERIC AND MAY NOT REFLECT ACTUAL CONDITIONS FOR A SPECIFIC IF SITE CONDITIONS CAUSE INSTALLATION TO DEVIATE FROM THE REQUIREMENTS DETAILED HEREIN, A LICENSED ENGINEER OR ARCHITECT SHALL PREPARE SITE SPECIFIC DOCUMENTS FOR USE WITH THIS DOCUMENT.
5. APPROVED IMPACT PROTECTIVE SYSTEM **IS NOT REQUIRED** TO PROTECT SYSTEM IN AREAS REQUIRING IMPACT PROTECTION.
6. FRAME MATERIAL: STEEL 16 GAUGE (0.054") MIN.
DOOR MATERIAL: STEEL 18 GAUGE (0.045") MIN. OR STEEL 16 GAUGE (0.054") MIN. POLYSTYRENE FOAM CORE (STD. DENSITY)
7. DESIGNATION "X" STANDS FOR THE FOLLOWING:
X: OPERABLE PANEL

TABLE OF CONTENTS	
SHEET	SHEET DESCRIPTION
1	GENERAL NOTES
2	ELEVATIONS & DESIGN PRESSURE TABLES
3	ANCHOR LAYOUT
4	ASSEMBLY DETAILS
5	VERTICAL & HORIZONTAL SECTIONS
6	MULLION & H50 SVR & H40 RIM DETAILS
7	SVR AND RIM ASSEMBLIES
8	BILL OF MATERIALS & COMPONENTS

MISSILE IMPACT RATING
LARGE & SMALL MISSILE IMPACT RATED

NOTE: SEE SHEET 2 FOR DESIGN PRESSURES BASED ON GAUGE OF DOOR, SIZE, AND HARDWARE TYPE.

TITLE: STEEL FLUSH OUTSWING DOORS WITH DETEX HARDWARE (IMPACT)

GENERAL NOTES

PREPARED BY: BUILDING DROPS, INC.
398 E. DANIA BEACH BLVD., STE. 338
DANIA BEACH, FL 33004
PH: (954)399-8478
FAX: (954)744-4738
WEB: www.buildingdrops.com



REMARKS	BY	DATE
A. 2018 IBC, IRC REVISION	MS	10.22.20

THE INSTALLATION DETAILS DESCRIBED HEREIN ARE GENERIC AND MAY NOT REFLECT ACTUAL CONDITIONS FOR A SPECIFIC SITE. IF SITE CONDITIONS CAUSE INSTALLATION TO DEVIATE FROM THE REQUIREMENTS DETAILED HEREIN, A LICENSED ENGINEER OR ARCHITECT SHALL PREPARE SITE SPECIFIC DOCUMENTS FOR USE WITH THIS DOCUMENT.



HERMES F. NORERO, P.E.
TEXAS P.E. No 118471
BUILDING DROPS, INC
398 E. DANIA BEACH BLVD. # 338
DANIA BEACH, FL 33004
TBPE FIRM No. 13734

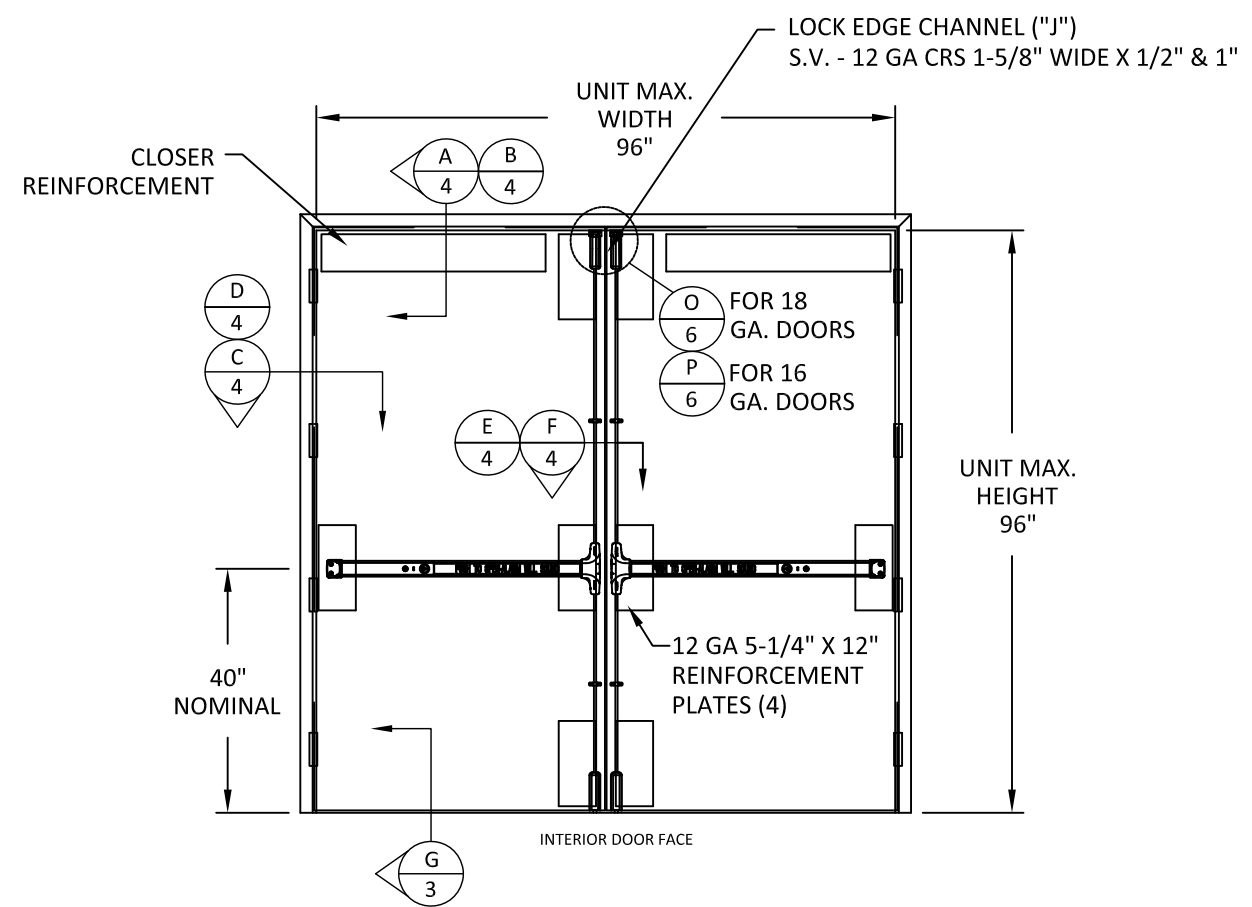
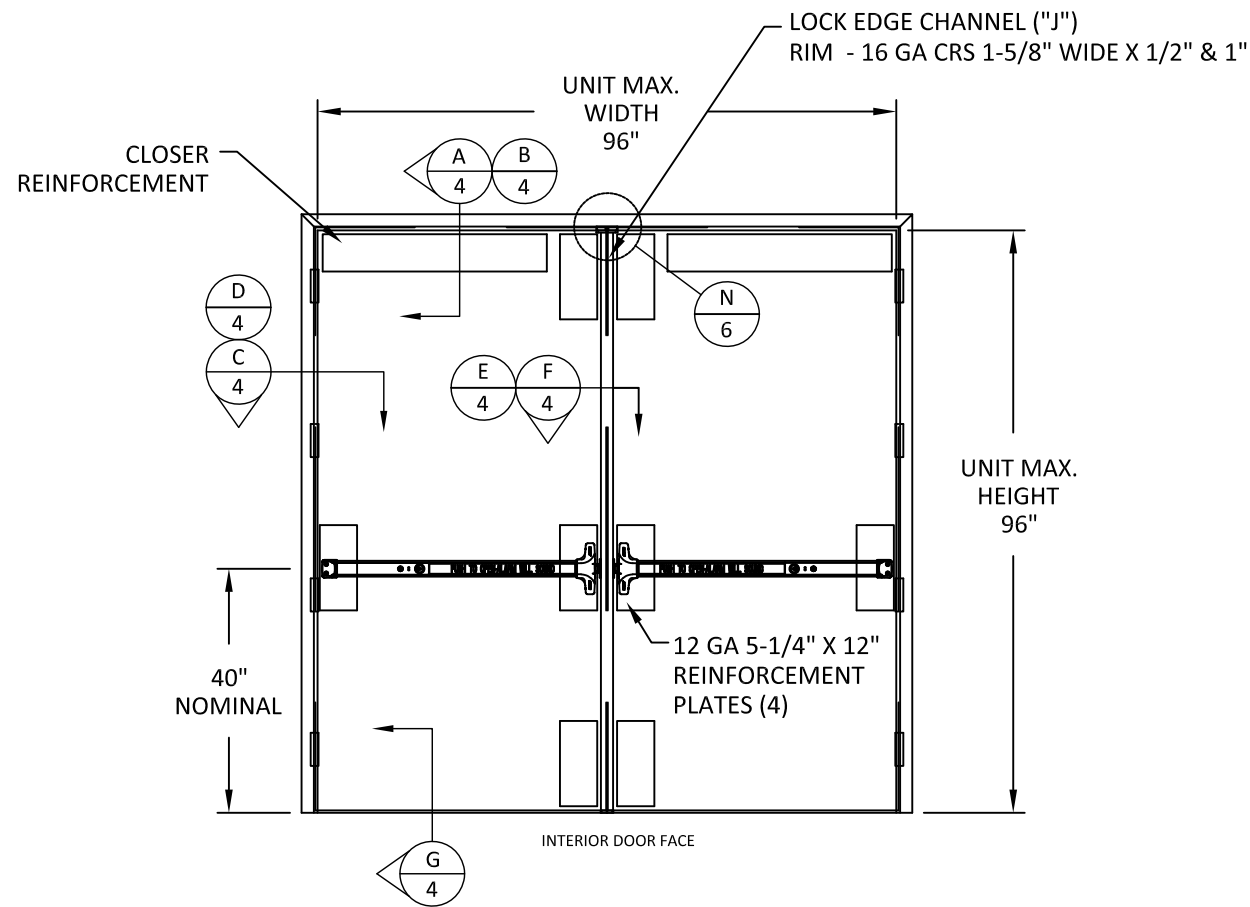
DATE:	12.22.15
DWG. BY:	LMS
CHK. BY:	HFN
SCALE:	NTS
DWG. #:	DMC002

SHEET:

1

OF 8

s:\projects\deansteel manufacturing company\tdr-20-0913-rdi submittal-df-842-steel flush outswing door with detex(dwgs)\rnc002.dwg 10/29/2020 9:12 AM



DOOR CONSTRUCTION	SIZE	DESIGN PRESSURE	HARDWARE
18 GAUGE	96" X 96"	+/- 50 PSF	HV40 RIM W/ H90R MULLION
16 GAUGE	96" X 96"	+/- 60 PSF	HV40 RIM W/ H90R MULLION

NOTE: REFER TO SHEET 6 FOR MULL ASSEMBLY AND FURTHER DETAILS. REFER TO HARDWARE MANUFACTURES INSTALLATION INSTRUCTION FOR PROPER ASSEMBLY

DOOR CONSTRUCTION	SIZE	DESIGN PRESSURE	HARDWARE
18 GAUGE	96" X 96"	+50 / -40 PSF	HV50 SVR
16 GAUGE	96" X 96"	+60 / -55 PSF	HV50 SVR
18 GAUGE	84" X 84"	+60 / -50 PSF	HV50 SVR

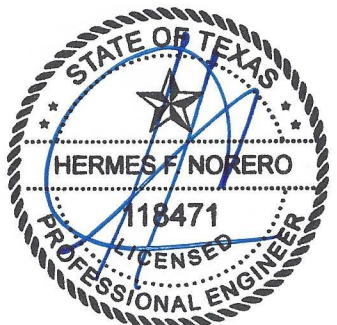
NOTE: REFER TO HARDWARE MANUFACTURER'S INSTALLATION INSTRUCTIONS FOR PROPER ASSEMBLY.

TITLE: STEEL FLUSH OUTSWING DOORS WITH DETEX HARDWARE (IMPACT) ELEVATIONS & DESIGN PRESSURE TABLES

PREPARED BY: **BUILDING DROPS, INC.**
398 E. DANIA BEACH BLVD., STE. 338
DANIA BEACH, FL 33004
PH: (954) 399-8478
FAX: (954) 744-4738
WEB: www.buildingdrops.com

REMARKS	BY	DATE

THE INSTALLATION DETAILS DESCRIBED HEREIN ARE GENERIC AND MAY NOT REFLECT ACTUAL CONDITIONS FOR A SPECIFIC SITE. IF SITE CONDITIONS CAUSE INSTALLATION TO DEVIATE FROM THE REQUIREMENTS DETAILED HEREIN, A LICENSED ENGINEER OR ARCHITECT SHALL PERFORM SITE SPECIFIC DOCUMENTS FOR USE WITH THIS DOCUMENT.



HERMES F. NORERO, P.E.
TEXAS P.E. No 118471
BUILDING DROPS, INC
398 E. DANIA BEACH BLVD. # 338
DANIA BEACH, FL 33004
TBPE FIRM No. 13734

DATE: 12.22.15

DWG. BY: LMS CHK. BY: HFN

SCALE: NTS

DWG. #: DMC002

SHEET: 2

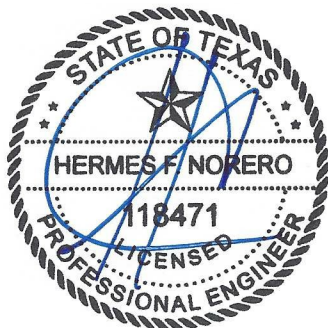
TITLE: STEEL FLUSH OUTSWING DOORS WITH DETEX HARDWARE (IMPACT) HV40, 10, 40 RIM W/ H90R MULLION

PREPARED BY: BUILDING DROPS, INC.
398 E. DANIA BEACH BLVD., STE. 338
DANIA BEACH, FL 33004
PH: (954) 399-8478
FX: (954) 744-4738
WEB: www.buildingdrops.com



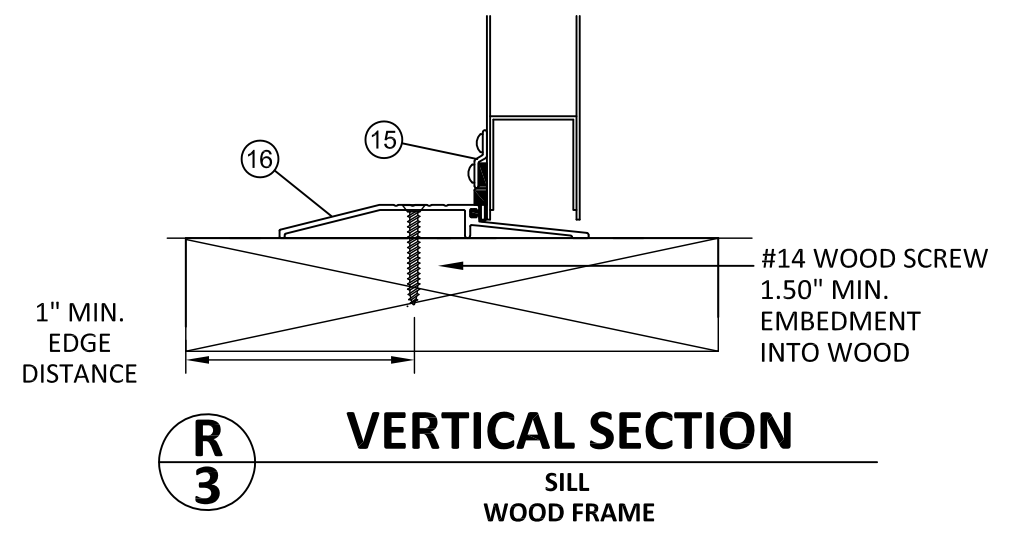
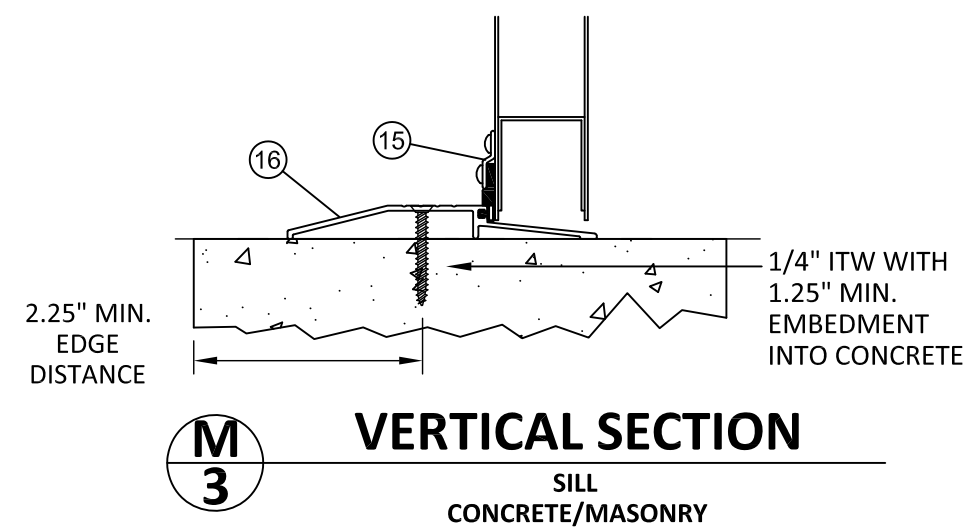
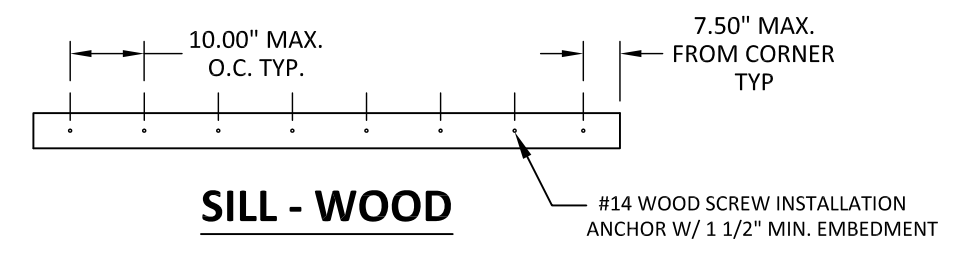
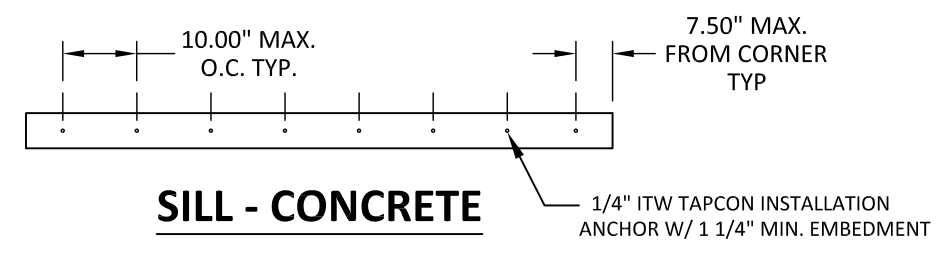
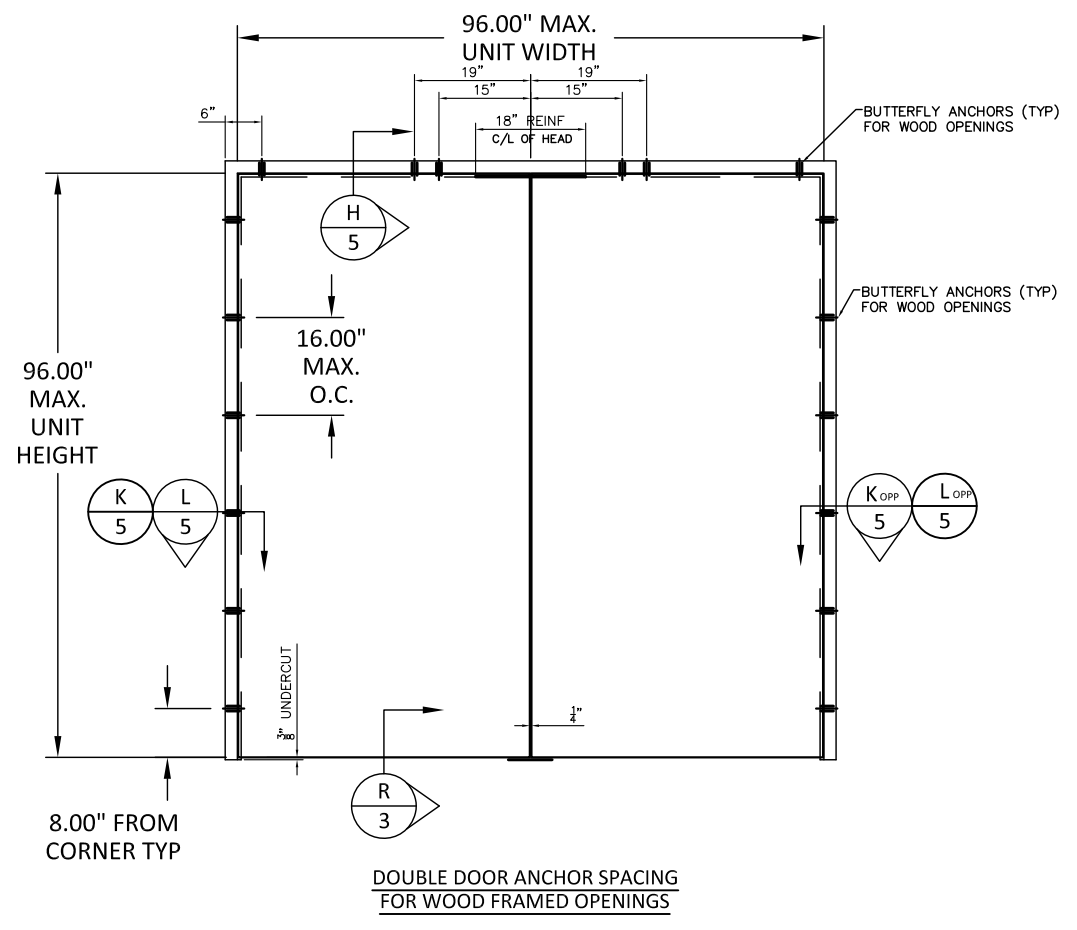
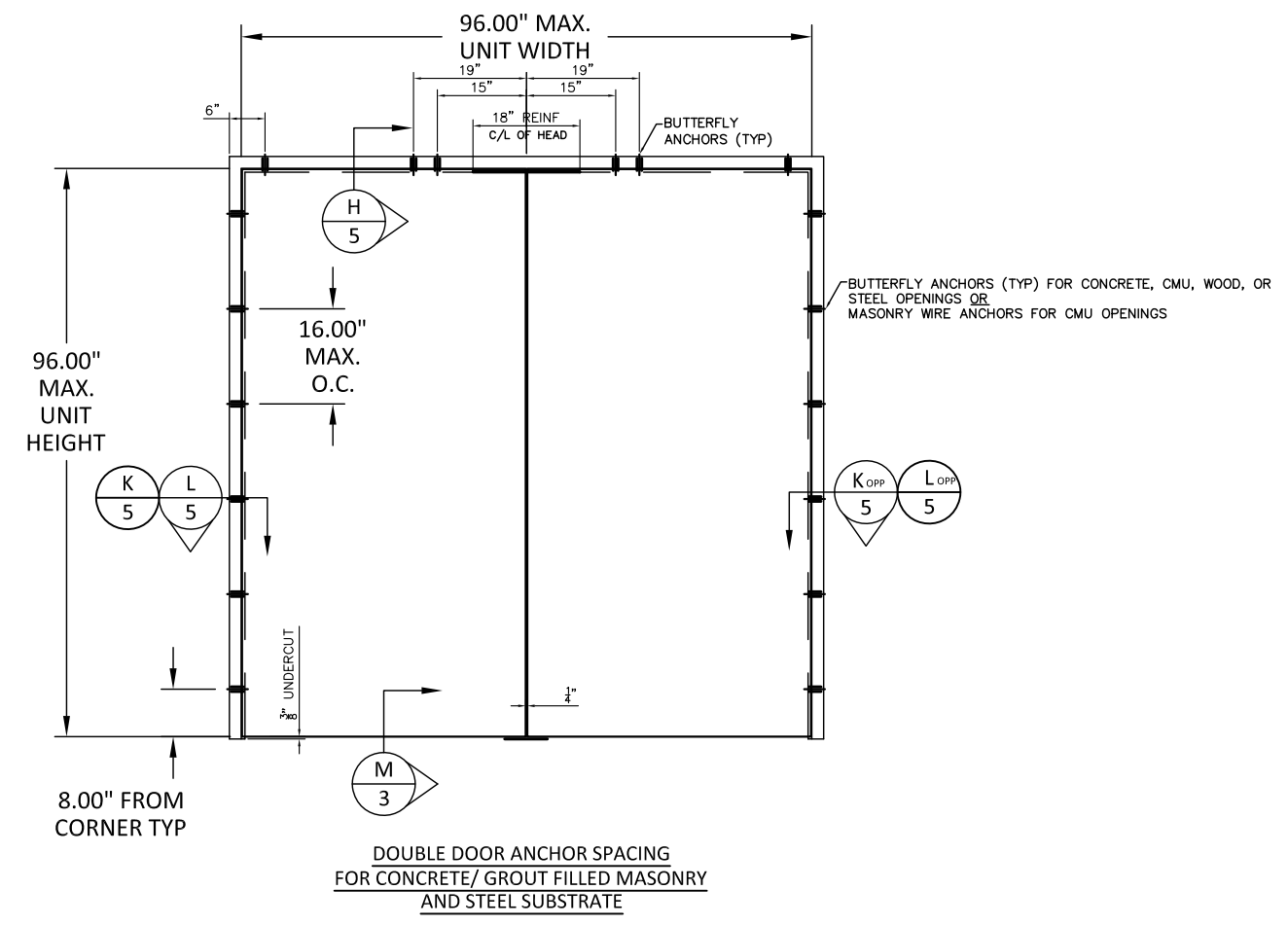
REMARKS	BY	DATE

THE INSTALLATION DETAILS DESCRIBED HEREIN ARE GENERIC AND MAY NOT REFLECT ACTUAL CONDITIONS FOR A SPECIFIC SITE. IF SITE CONDITIONS CAUSE INSTALLATION TO DEVIATE FROM THE REQUIREMENTS DETAILED HEREIN, A LICENSED ENGINEER OR ARCHITECT SHALL PERFORM SITE SPECIFIC DOCUMENTS FOR USE WITH THIS DOCUMENT.



HERMES F. NORERO, P.E.
TEXAS P.E. No 118471
BUILDING DROPS, INC
398 E. DANIA BEACH BLVD. # 338
DANIA BEACH, FL 33004
TBPE FIRM No. 13734

DATE:	12.22.15
DWG. BY:	LMS
CHK. BY:	HFN
SCALE:	NTS
DWG. #:	DMC002
SHEET:	3



s:\projects\deansteel manufacturing company\tdr-20-0913-rdi submittal-df-842-steel flush outswing door with detex\dwgs\lmc002.dwg 10/29/2020 9:13 AM

TITLE: STEEL FLUSH OUTSWING DOORS
WITH DETEX HARDWARE
(IMPACT)
HORIZONTAL AND VERTICAL
SECTIONS

PREPARED BY:
BUILDING DROPS, INC.
398 E. DANIA BEACH BLVD., STE. 338
DANIA BEACH, FL 33004
PH: (954) 399-8478
FAX: (954) 744-4738
WEB: www.buildingdrops.com



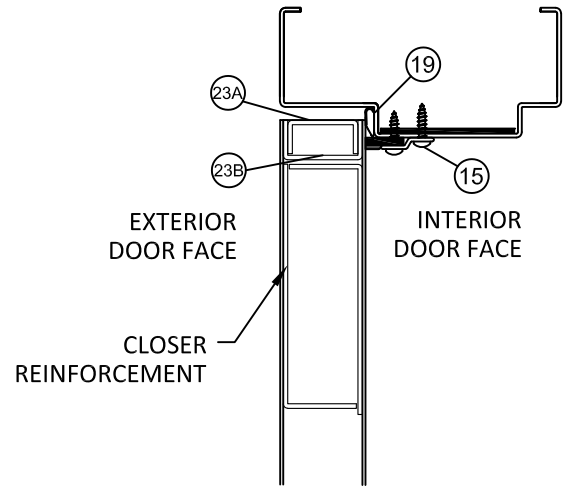
REMARKS	BY	DATE

THE INSTALLATION DETAILS DESCRIBED HEREIN ARE GENERIC AND MAY NOT REFLECT ACTUAL CONDITIONS FOR A SPECIFIC SITE. IF SITE CONDITIONS CAUSE INSTALLATION TO DEVIATE FROM THE REQUIREMENTS DETAILED HEREIN, A LICENSED ENGINEER OR ARCHITECT SHALL PERFORM SITE SPECIFIC DOCUMENTS FOR USE WITH THIS DOCUMENT.

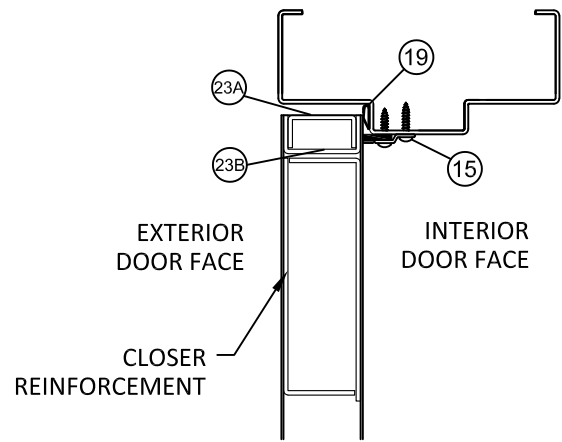


HERMES F. NORERO, P.E.
TEXAS P.E. No. 118471
BUILDING DROPS, INC
398 E. DANIA BEACH BLVD. # 338
DANIA BEACH, FL 33004
TBPE FIRM No. 13734

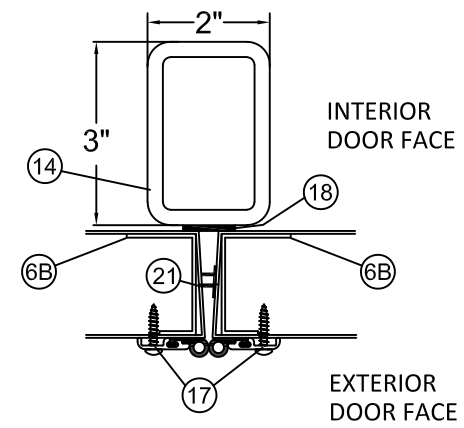
DATE:	12.22.15
DWG. BY:	LMS
CHK. BY:	HFN
SCALE:	NTS
DWG. #:	DMC002
SHEET:	4



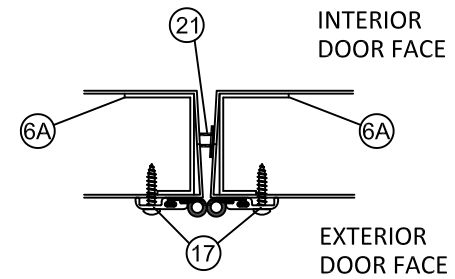
A
4 VERTICAL SECTION
HEAD RIM EXIT DEVICE



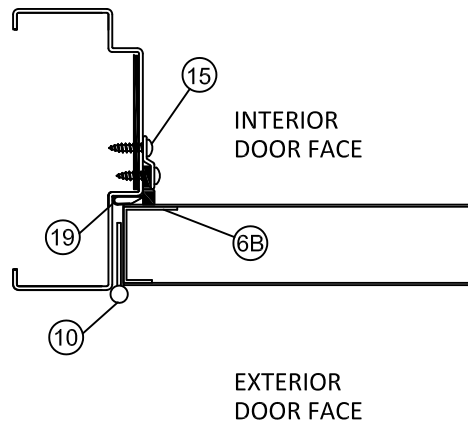
B
4 VERTICAL SECTION
HEAD SURFACE VERTICAL ROD



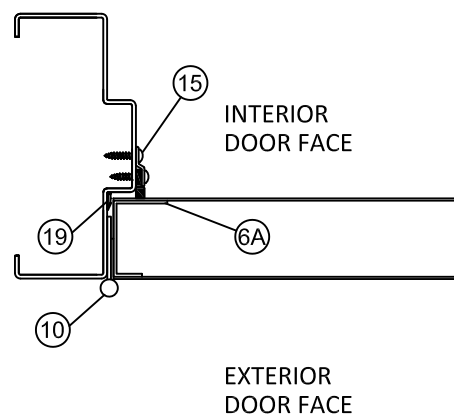
E
4 HORIZONTAL SECTION
HV40 RIM EXIT W/ H90R MULLION MEETING STILE



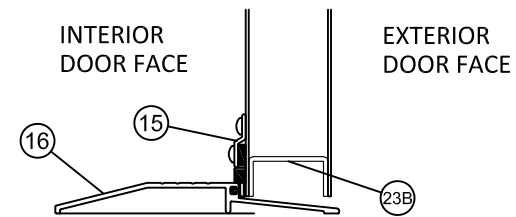
F
4 HORIZONTAL SECTION
HV50 SURFACE VERTICAL ROD MEETING STILE



C
4 HORIZONTAL SECTION
JAMB RIM EXIT DEVICE



D
4 HORIZONTAL SECTION
JAMB SURFACE VERTICAL ROD



G
4 VERTICAL SECTION
SILL

s:\projects\deansteel manufacturing company\tdr-20-0913-rdl submittal-df-842-steel flush outswing door with detex\dwgs\lrmc002.dwg 10/29/2020 9:13 AM

TITLE: STEEL FLUSH OUTSWING DOORS WITH DETEX HARDWARE (IMPACT) HV50, 20, 50 SURFACE VERTICAL ROD

PREPARED BY: BUILDING DROPS, INC.
398 E. DANIA BEACH BLVD., STE. 338
DANIA BEACH, FL 33004
PH: (954) 399-8478
FAX: (954) 744-4738
WEB: www.buildingdrops.com

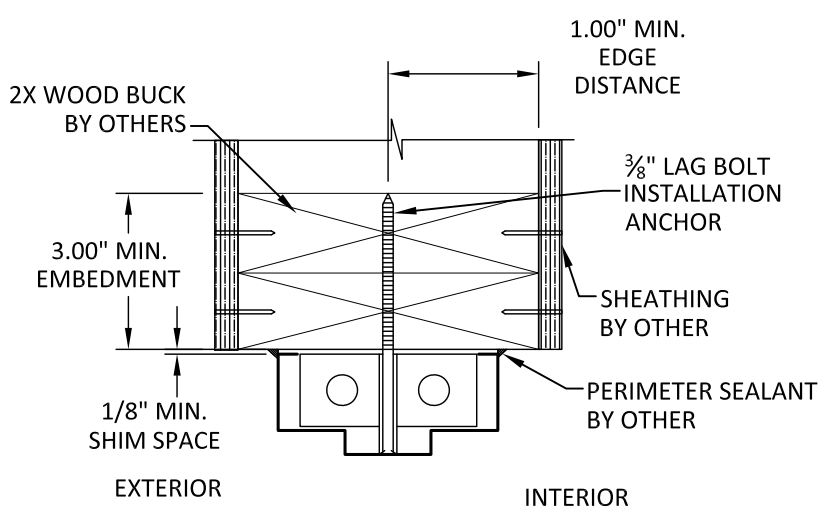
REMARKS	BY	DATE

THE INSTALLATION DETAILS DESCRIBED HEREIN ARE GENERIC AND MAY NOT REFLECT ACTUAL CONDITIONS FOR A SPECIFIC SITE. IF SITE CONDITIONS CAUSE INSTALLATION TO DEVIATE FROM THE REQUIREMENTS DETAILED HEREIN, A LICENSED ENGINEER OR ARCHITECT SHALL PERFORM SITE SPECIFIC DOCUMENTS FOR USE WITH THIS DOCUMENT.

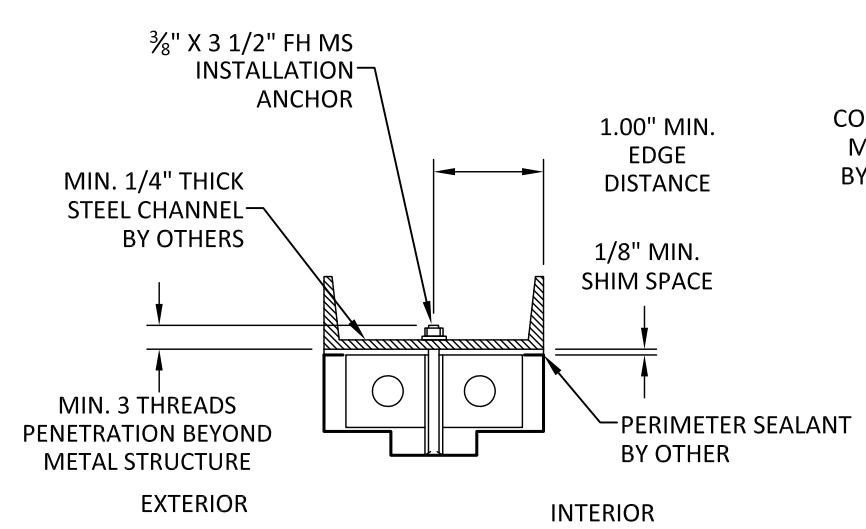


HERMES F. NORERO, P.E.
TEXAS P.E. No. 118471
BUILDING DROPS, INC
398 E. DANIA BEACH BLVD. # 338
DANIA BEACH, FL 33004
TBPE FIRM No. 13734

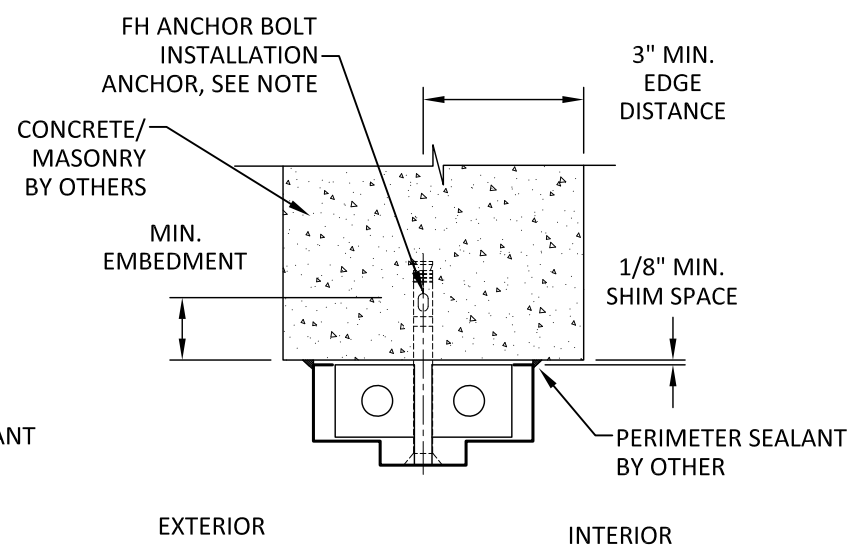
DATE:	12.22.15
DWG. BY:	LMS
CHK. BY:	HFN
SCALE:	NTS
DWG. #:	DMC002
SHEET:	5



H
5 **VERTICAL SECTION**
HEAD - 2X WOOD FRAME BUTTERFLY ANCHOR



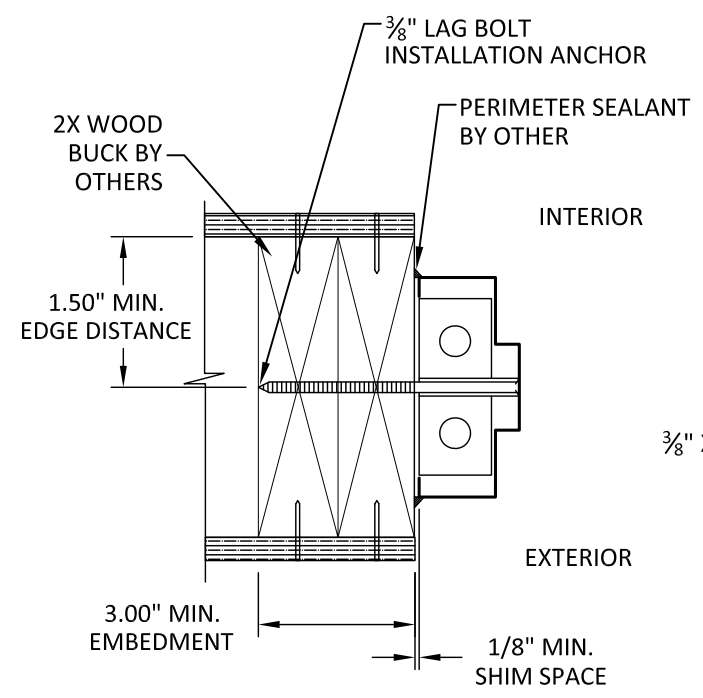
I
5 **VERTICAL SECTION**
HEAD - STEEL CHANNEL BUTTERFLY ANCHOR



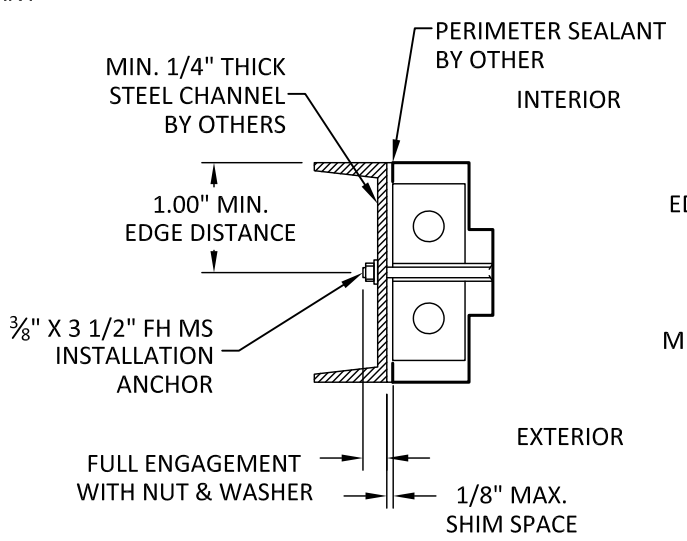
J
5 **VERTICAL SECTION**
HEAD - CONCRETE BUTTERFLY ANCHOR

NOTE: CONCRETE & GROUT FILLED CMU MECHANICAL ANCHORS THROUGH BUTTERFLY ANCHORS MAY BE AS FOLLOWS,

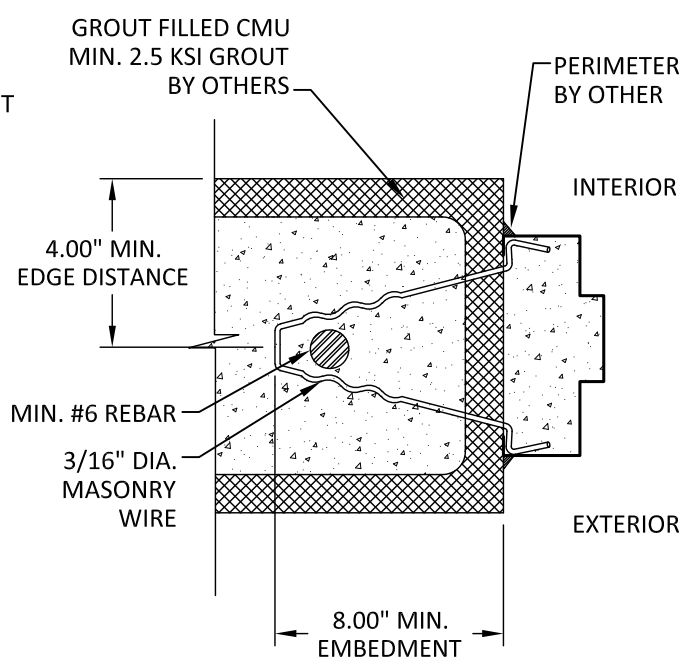
- 3/8" FH CS HILTI KWIKBOLT 3, MIN. 2 1/8" EMBEDMENT
- 3/8" FH CS POWERS LOK BOLT, MIN. 2" EMBEDMENT
- 3/8" FH CS POWERS POWER BOLT, MIN. 2" EMBEDMENT



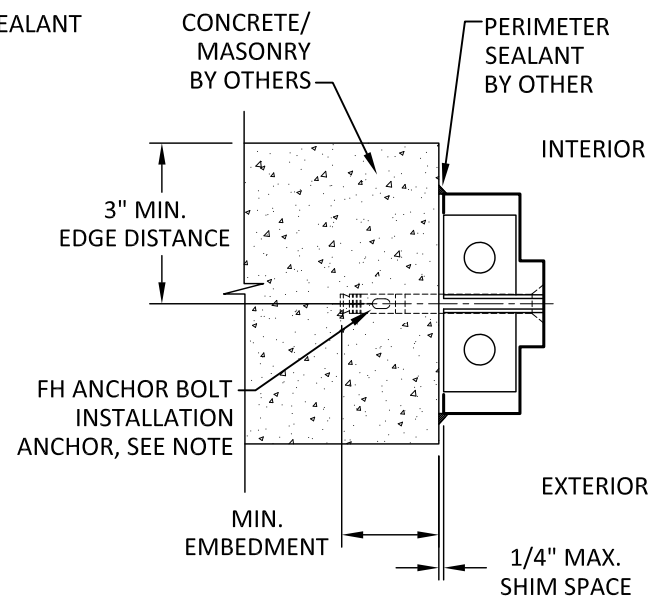
K
5 **HORIZONTAL SECTION**
JAMB - 2X WOOD FRAME BUTTERFLY ANCHOR



L
5 **HORIZONTAL SECTION**
JAMB - STEEL CHANNEL BUTTERFLY ANCHOR



L
5 **HORIZONTAL SECTION**
JAMB - GROUT FILLED CMU MASONRY WIRE ANCHOR



L
5 **HORIZONTAL SECTION**
JAMB - CONCRETE/GROUT FILLED CMU BUTTERFLY ANCHOR

TITLE: STEEL FLUSH OUTSWING DOORS WITH DETEX HARDWARE (IMPACT) HV40, 10, 40 RIM W/ H90R MULLION

PREPARED BY: BUILDING DROPS, INC.
398 E. DANIA BEACH BLVD., STE. 338
DANIA BEACH, FL 33004
PH: (954) 399-8478
FAX: (954) 744-4738
WEB: www.buildingdrops.com



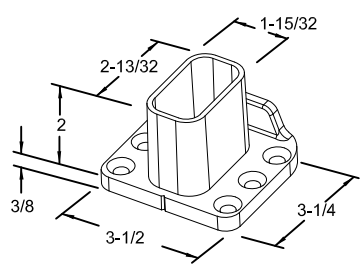
REMARKS	BY	DATE

THE INSTALLATION DETAILS DESCRIBED HEREIN ARE GENERIC AND MAY NOT REFLECT ACTUAL CONDITIONS FOR A SPECIFIC SITE. IF SITE CONDITIONS CAUSE INSTALLATION TO DEVIATE FROM THE REQUIREMENTS DETAILED HEREIN, A LICENSED ENGINEER OR ARCHITECT SHALL PERFORM SITE SPECIFIC DOCUMENTS FOR USE WITH THIS DOCUMENT.

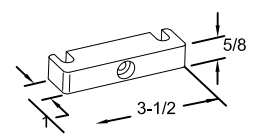


HERMES F. NORERO, P.E.
TEXAS P.E. No. 118471
BUILDING DROPS, INC.
398 E. DANIA BEACH BLVD. # 338
DANIA BEACH, FL 33004
TBPE FIRM No. 13734

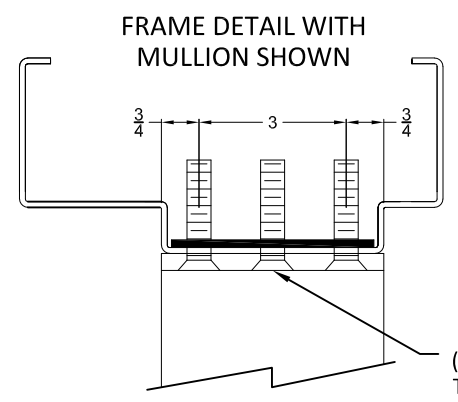
DATE:	12.22.15	
DWG. BY:	LMS	CHK. BY: HFN
SCALE:	NTS	
DWG. #:	DMC002	
SHEET:	6	



TOP FITTING

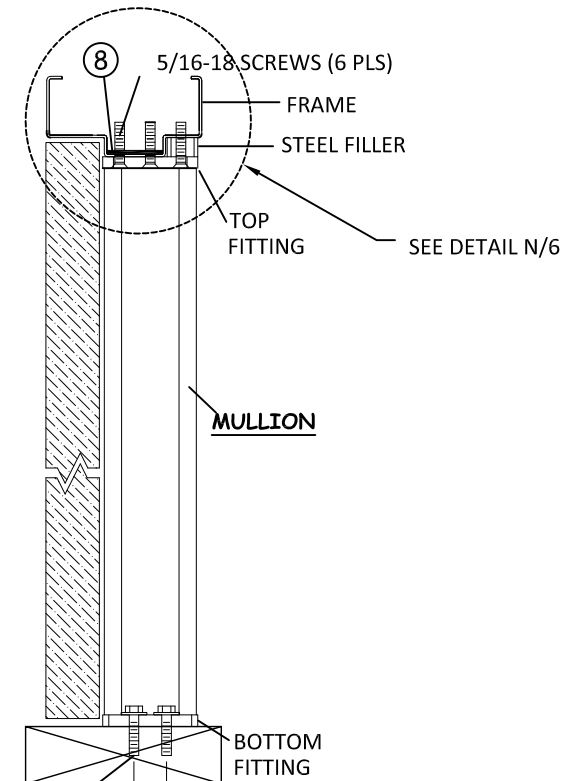


STEEL FILLER



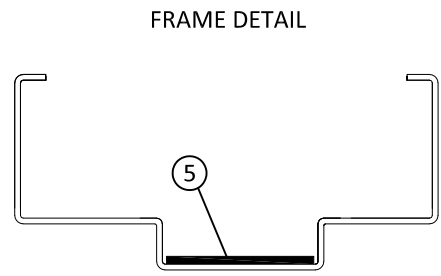
(6) 5/16-18 X 1-1/2" PFHS THROUGH TOP FITTING INTO FRAME AND REINFORCING

N HORIZONTAL SECTION
HV40 RIM EXIT W/ H90R MULLION

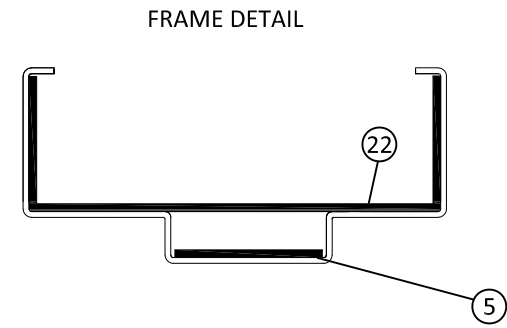


MULLION SECTION

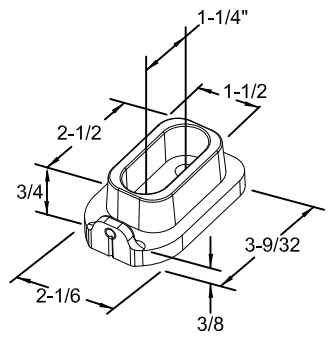
FOR INSTALLATION INTO WOOD
FOR INSTALLATION INTO CONCRETE SEE DETAIL G/4



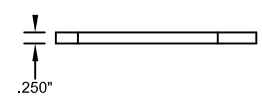
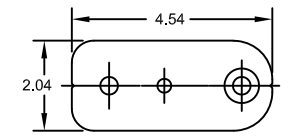
O HORIZONTAL SECTION
HV50 SURFACE VERTICAL ROD WITH 18 GA. DOORS



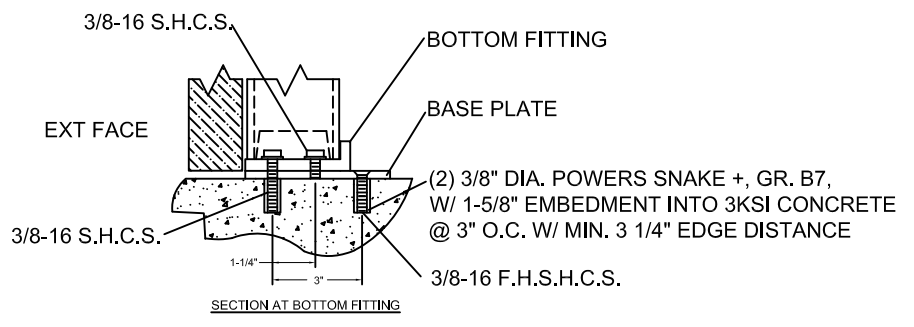
P HORIZONTAL SECTION
HV50 SURFACE VERTICAL ROD W/ REINF. WITH 16 GA. DOORS



H90R BOTTOM FITTING



BASE PLATE



Q INSTALLATION DETAILS
CONCRETE/MASONRY

TITLE:
STEEL FLUSH OUTSWING DOORS
WITH DETEX HARDWARE
(IMPACT)
HV50 SVR ASSEMBLY
HV40 RIM ASSEMBLY

PREPARED BY:
BUILDING DROPS, INC.
398 E. DANIA BEACH BLVD., STE. 338
DANIA BEACH, FL 33004
PH: (954) 399-8478
FAX: (954) 744-4738
WEB: www.buildingdrops.com



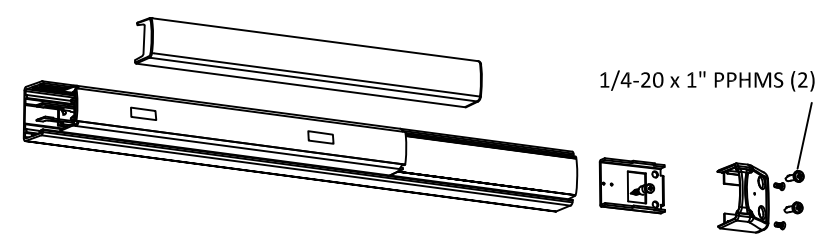
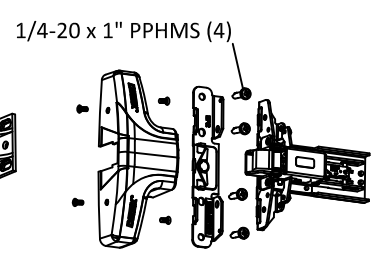
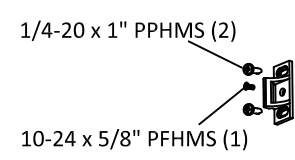
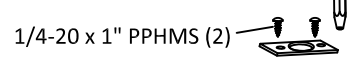
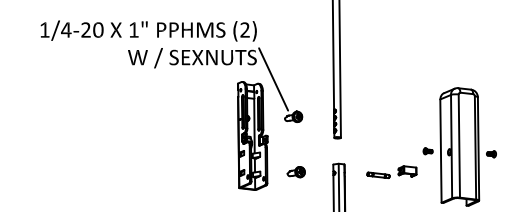
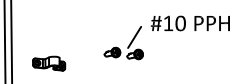
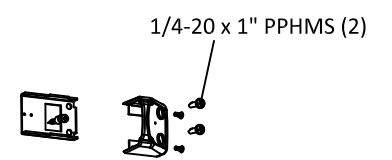
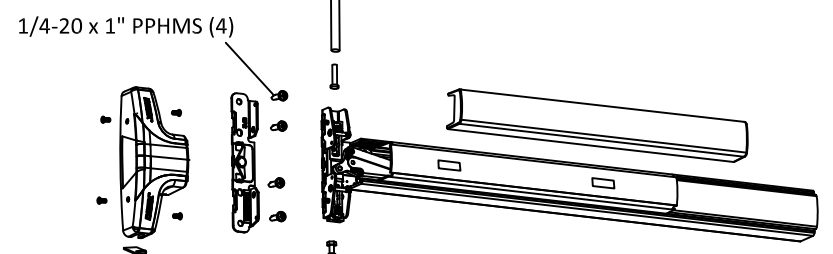
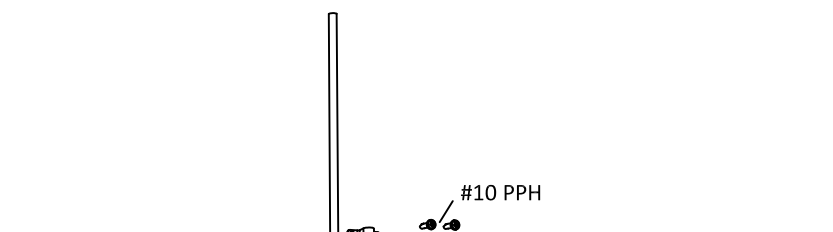
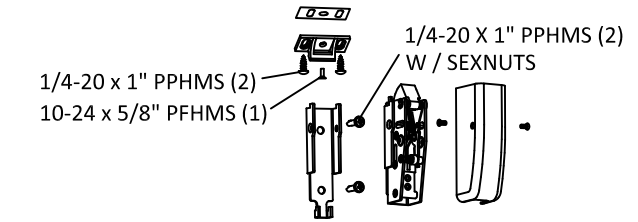
REMARKS	BY	DATE

THE INSTALLATION DETAILS DESCRIBED HEREIN ARE GENERIC AND MAY NOT REFLECT ACTUAL CONDITIONS FOR A SPECIFIC SITE. IF SITE CONDITIONS CAUSE INSTALLATION TO DEVIATE FROM THE REQUIREMENTS DETAILED HEREIN, A LICENSED ENGINEER OR ARCHITECT SHALL PERFORM SITE SPECIFIC DOCUMENTS FOR USE WITH THIS DOCUMENT.



HERMES F. NORERO, P.E.
TEXAS P.E. No 118471
BUILDING DROPS, INC
398 E. DANIA BEACH BLVD. # 338
DANIA BEACH, FL 33004
TBPE FIRM No. 13734

DATE:	12.22.15	
DWG. BY:	LMS	CHK. BY: HFN
SCALE:	NTS	
DWG. #:	DMC002	
SHEET:	7	



12 HV50 SVR
ADVANTECH H20, H50 ALTERNATE

13 HV40 RIM
O8DN LEVER TRIM ASSEMBLY

11 HV40 RIM
ADVANTECH H10, H40 ALTERNATE

s:\projects\deansteel manufacturing company\tdi-20-0913-rdi submittal-df-842-steel flush outswing door with detex\dwgs\lrmc002.dwg 10/29/2020 9:13 AM

BILL OF MATERIALS

ITEM	QTY	DESCRIPTION	MATERIAL	SIZE AND SPECIFICATIONS
1A 1B	1	16 GAUGE x 5-3/4" DEPTH FRAME	16 GAUGE, .054 MINIMUM, ALL COMPONENTS OF THIS ITEM, I.E. HEAD, JAMBS, REINFORCEMENTS AND ANCHORS ARE COMMERCIAL COLD ROLLED STEEL (OR OPTIONAL GALVANNEAL STEEL) ASTM A653/A653M, W/ MIN. TENSILE STRENGTH 52 KSI, MIN. YIELD STRENGTH 45 KSI, ELONGATION 40%.	5-3/4" DEPTH x 2" FACE x .054 MIN. THICK
2A 2B 2C	1	18 GAUGE 4-0 x 8-0 DOOR 18 GAUGE 3-6 x 7-0 DOOR 16 GAUGE 4-0 x 8-0 DOOR	18 GAUGE, MINIMUM THICKNESS = 0.045" 18 GAUGE, MINIMUM THICKNESS = 0.045" 16 GAUGE, MINIMUM THICKNESS = 0.054"	1-3/4" THICK
3	3	3/16" THICK DOOR HINGE REINFORCING	HRPO	
4	3	3/16" THICK GAUGE FRAME HINGE REINFORCING	HRPO	
5	1	12 GAUGE FRAME REINFORCEMENT	CRS	12 GAUGE x 2-1/4" x 18" L
6A 6B	AS REQ	J-CHANNEL	CRS	
7	1	14 GAUGE RIM PANIC DEVICE REINFORCEMENT	CRS	
8	1	HARDWARE MULLION REINFORCEMENT / SOFFIT (12 GAUGE)	CRS	12 GAUGE x 2-3/4" x 18" L
9	AS REQ	BUTTERFLY ANCHOR	STEEL	
10	AS REQ	HINGES	STEEL	(4) 4.5 X 4.5 HEAVYWEIGHT(.134 THICK) HINGES PER PANEL, ATTACHED TO FRAME WITH (4) 12-24 x 1/2 FHMS
11	1	HV40 RIM PANIC DEVICE (ADVANTECH H10 / H40 ALTERNATE)	SEE DETAIL DRAWINGS	RHR SPECIMEN 1: RIM EXIT DEVICE & Ø8DN TRIM ATTACHED TO DOOR WITH (7) 1/4-20 x 1" & (2) WITH SEX BOLTS STRIKE INSTALLED WITH (2) 1/4-20 x 1" PPH SCREWS & (1) 10-24 PFH x 5/8 SCREW LHR SPECIMEN 3: RIM EXIT DEVICE ATTACHED TO DOOR WITH (7) 1/4-20 x 1" & (4) WITH SEX BOLTS STRIKE SURFACE INSTALLED WITH (2) 1/4-20 x 1" PPH SCREWS & (1) 10-24 PFH x 5/8 SCREW
12	1	HV50 SVR PANIC DEVICE (ADVANTECH H20 / H50 ALTERNATE)	SEE DETAIL DRAWINGS	RHR SPECIMEN 2: 2 POINT SVR DEVICE & Ø8DN TRIM ATTACHED TO DOOR WITH (11) 1/4-20 x 1" & (6) SEX BOLTS STRIKE INSTALLED WITH (2) 1/4-20 x 1" PPH SCREWS & (1) 10-24 PFH x 5/8 SCREW LHR SPECIMEN 4: 2 POINT SVR DEVICE ATTACHED TO DOOR WITH (11) 1/4-20 x 1" & (8) SEX BOLTS STRIKE SURFACE INSTALLED WITH (2) 1/4-20 x 1" PPH SCREWS & (1) 10-24 PFH x 5/8 SCREW
13	1	TRIM, Ø8DN	DETEX P/N 101446	Ø8DN TRIM WITH KEY CYLINDER, THRU BOLTED TO DEVICE WITH 1/4-20 SCREWS
14	1	DETEX REMOVABLE MULLION, H90R DETEX P/N 106076-2	1/4" WALL ASTM A500 STEEL, GRADE B, SHAPED STRUCTURAL TUBING	2"x3"x 1/4" WALL TUBE, WITH TOP AND BOTTOM FITTINGS
15	4	EDGE SEAL (NATIONAL GUARD PRODUCTS #120NA)	NEOPRENE SEAL WITH EXTRUDED ALUMINUM HOLDER	7/8" EXTRUSION x 1/4 x 3/16 SEAL
16	1	THRESHOLD (NATIONAL GUARD PRODUCTS #950N)	EXTRUDED ALUMINUM (6063-T5 ALLOY)	1/2" x 5" ADA COMPLIANT ALUMINUM BUMPER THRESHOLD, ATTACHED TO BUCK WITH #10 x 1-1/4" PFH LAG SCREWS
17	2	SPLIT ASTRAGAL (NATIONAL GUARD PRODUCTS 137NA)	NEOPRENE SPLIT ASTRAGAL SEAL WITH EXTRUDED HOLDER	.31 ROUND LIP WITH .875 HOLDER
18	AS REQ	MULLION SEAL (NATIONAL GUARD PRODUCTS 5100S)	NEOPRENE SPONGE SEAL	3/32" x 1-1/8" WIDE
19	AS REQ	WEATHER STRIP (NATIONAL GUARD PRODUCTS 5050B)	SILICONE: SELF ADHESIVE SILICONE FIRE AND SMOKE SEAL	1/2" x 1/4" THICKNESS
20	AS REQ	CAULKING: GE SILICONE II	N/A	AS REQUIRED
21	AS REQ	WEATHER STRIP (NATIONAL GUARD PRODUCTS 5070B)	SILICONE: SELF ADHESIVE DOUBLE SHARK FIN SMOKE SEAL	1/2" x 3/16" THICKNESS
22	AS REQ	14 GAUGE FRAME REINFORCEMENT	STEEL	26" LONG, 14 GAUGE CHANNEL
23A 23B	AS REQ	12 GAUGE TOP U-CHANNEL 12 GAUGE BOTTOM U-CHANNEL	CRS	

NOTE: ALL DIMENSIONS SHOWN ARE IN INCHES.



931 S. Flores St.
San Antonio, Texas 78204

PH: (210) 226-8271
FX: (210) 226-0913

TITLE: STEEL FLUSH OUTSWING DOORS WITH DETEX HARDWARE (IMPACT)
BILL OF MATERIALS

PREPARED BY: BUILDING DROPS, INC.
398 E. DANIA BEACH BLVD., STE. 338
DANIA BEACH, FL 33004
PH: (954) 399-8478
FAX: (954) 744-4738
WEB: www.buildingdrops.com

REMARKS	BY	DATE

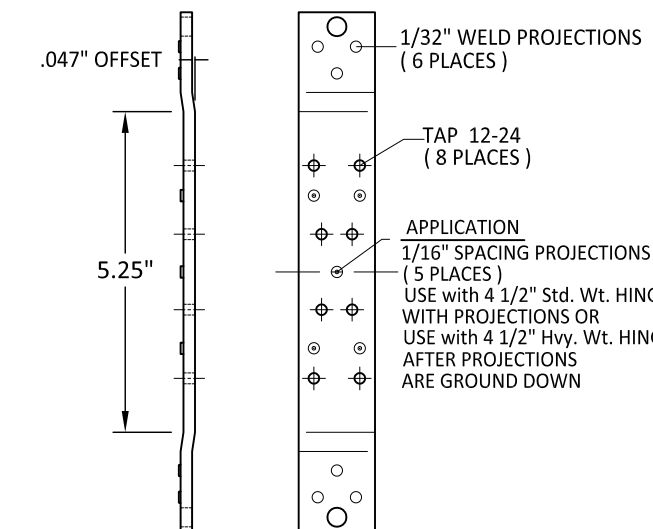
THE INSTALLATION DETAILS DESCRIBED HEREIN ARE GENERIC AND MAY NOT REFLECT ACTUAL CONDITIONS FOR A SPECIFIC SITE. IF SITE CONDITIONS CAUSE INSTALLATION TO DEVIATE FROM THE REQUIREMENTS DETAILED HEREIN, A LICENSED ENGINEER OR ARCHITECT SHALL PERFORM SITE SPECIFIC DOCUMENTS FOR USE WITH THIS DOCUMENT.



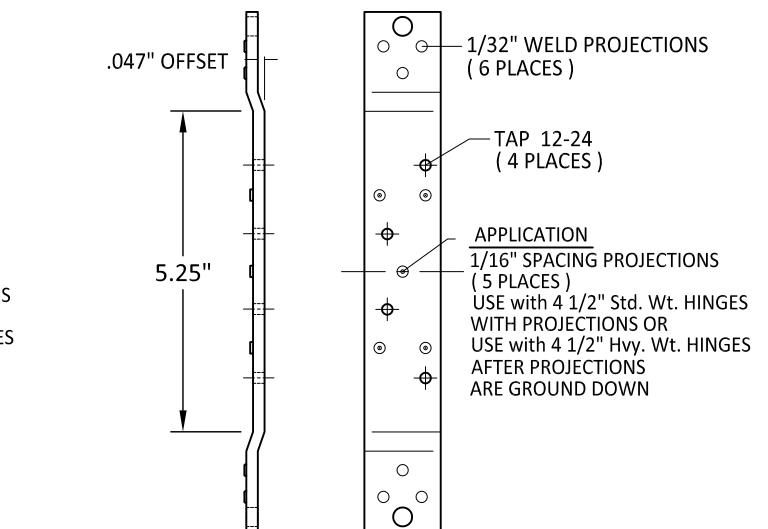
HERMES F. NORERO, P.E.
TEXAS P.E. No 118471
BUILDING DROPS, INC
398 E. DANIA BEACH BLVD. # 338
DANIA BEACH, FL 33004
TBPE FIRM No. 13734

DATE:	12.22.15
DWG. BY:	LMS
CHK. BY:	HFN
SCALE:	NTS
DWG. #:	DMC002
SHEET:	8

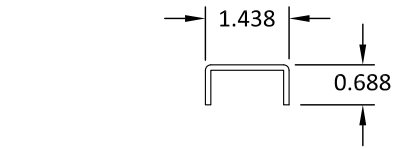
3 4 1/2" STD. HINGE REINFORCEMENT DOOR 1 1/4" x 8 1/2" x 7 Ga. HINGE REINF. (DOOR)



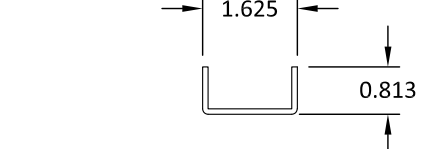
4 4 1/2" STD. & HEAVY HINGE REINFORCEMENT FRAME 1 1/4" x 8 1/2" x 7 Ga. HINGE REINF. (FRAME)



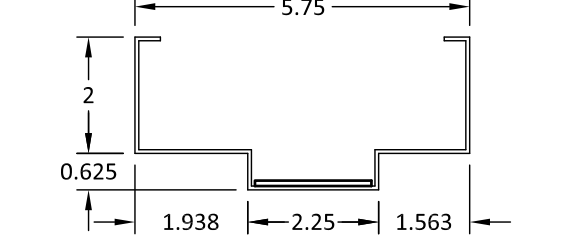
23A TOP U-CHANNEL 12 GA. CRS



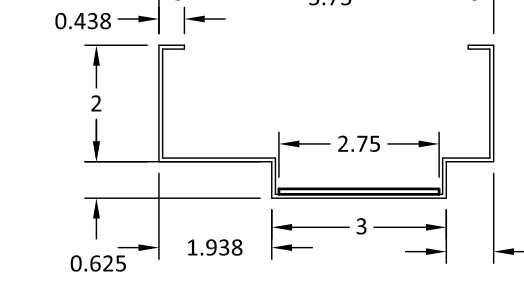
23B BOTTOM U-CHANNEL 12 GA. CRS



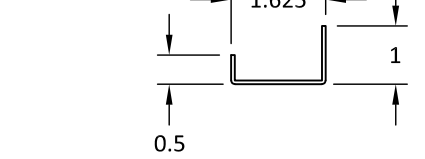
1A SURFACE VERTICAL ROD FRAME 16 GA. CRS



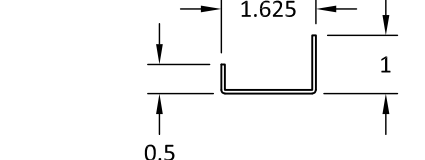
1B RIM EXIT MULLION FRAME 16 GA. CRS



6A J-CHANNEL 12 GA. CRS



6B J-CHANNEL 16 GA. CRS



9 BUTTERFLY ANCHOR 17 GA. GALVANNEALED

