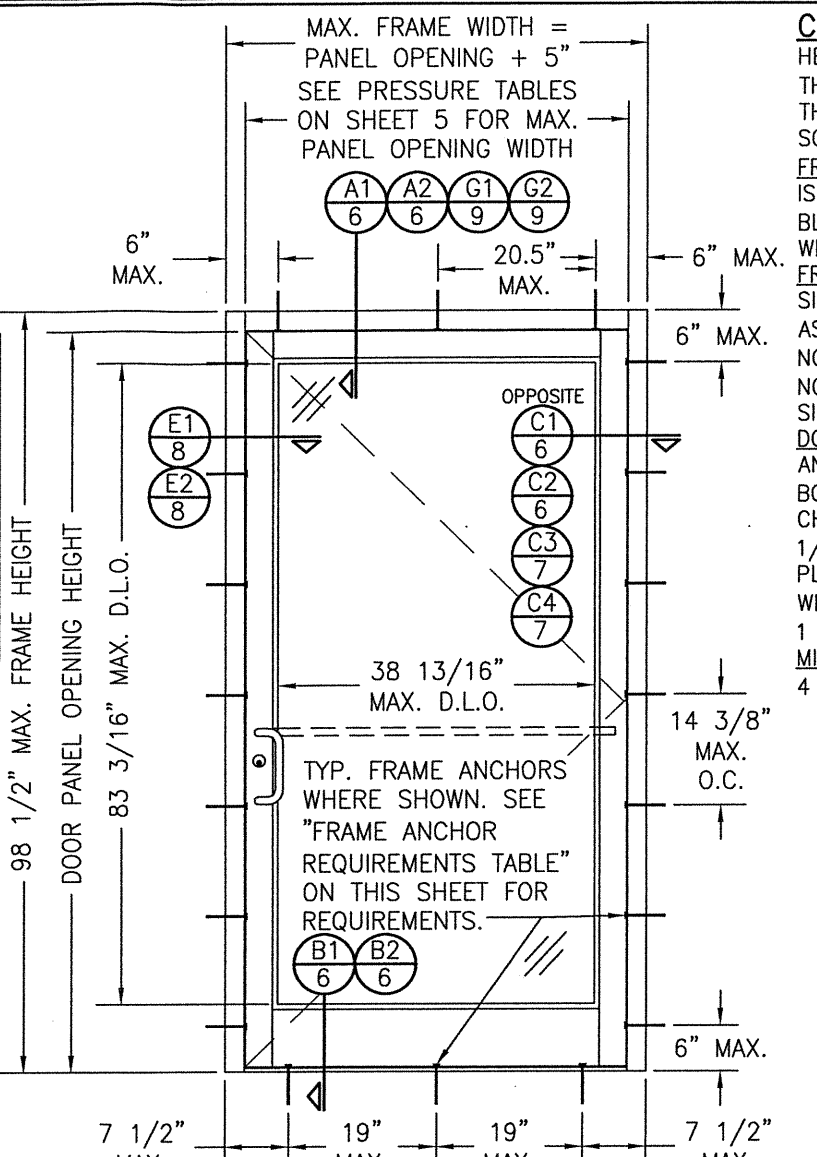


EXTERIOR ELEVATION; DOUBLE DOOR WITH STORE FRONT FRAMING & STANDARD INSTALLATION

SCALE: 1/2" = 1'-0"
(APPLICABLE WITH ALL HINGE TYPES)



EXTERIOR ELEVATION; SINGLE DOOR WITH STORE FRONT FRAMING & STANDARD INSTALLATION

SCALE: 1/2" = 1'-0"
(APPLICABLE WITH ALL HINGE TYPES)

CORNER & FRAME END CONSTRUCTION:
HEAD IS SQUARE CUT, BUTTED TO SIDE, FASTENED WITH THREE (3) NO. 12 X 1" S.S. PHTFS FASTENERS THROUGH THE SIDE MEMBER INTO THE HEAD MEMBER SCREW SPLINES & SEALED WITH SILICONE.
FRAME HEAD CORNER (TRIFAB 450/451 FRAME): HEAD IS SQUARE CUT, BUTTED TO SIDE, SECURED WITH SHEAR BLOCK ITEM# 16 (SEE SECTION G/5 & M/6) & SEALED WITH SILICONE.
FRAME SILL CORNER: SILL IS SQUARE CUT, BUTTED TO SIDE, SECURED TO THE SIDE MEMBER USING A PIVOT ASSEMBLY OR STEEL CLIP, FASTENED WITH THREE (3) NO. 12-24 X 3/8" FHMS AT THE FRAME & TWO (2) NO. 12-24 X 3/8" FHMS AT THE SILL, & SEALED WITH SILICONE.
DOOR PANEL CORNERS: VERTICAL STILES RUN THROUGH AND ARE SECURED TO THE RAILS AT THE TOP & BOTTOM WITH 1/4" THICK EXTRUDED CHANNELS. EACH CHANNEL IS FASTENED TO THE STILE & RAIL WITH 1/4-20 X 3/4" PHMS & 3/16" THICK STEEL NUT PLATES. THE INTERSECTION OF EACH CORNER JOINT WAS WELDED WITH A 1/2" DIA. PLUG WELD AND A 1 1/8" LONG FILLET WELD AT BOTH WEBS OF THE RAIL.
MIDRAIL ENDS: SECURED TO THE VERTICAL RAILS WITH 4 EACH 1 1/8" LONG FILLET WELDS

ALLOWABLE DESIGN PRESSURE
SEE SHEET 5

(* THESE DOORS ARE NOT APPROVED FOR USE WHERE WATER INFILTRATION RESISTANCE IS REQUIRED BY THE DOOR. UNLESS UNITS ARE INSTALLED IN NON-HABITABLE AREAS WHERE THE UNIT & THE AREA ARE DESIGNED TO ACCEPT WATER INFILTRATION, UNITS SHALL BE INSTALLED ONLY AT LOCATIONS PROTECTED BY A CANOPY OR OVERHANG WHERE-BY THE OVERHANG(OH) RATIO IS EQUAL TO OR MORE THAN 1.0

EVALUATION OF THIS PRODUCT IS BASED ON APPLICABLE STANDARDS AND/OR INFORMATION & RESULTS FROM APPLICABLE TEST REPORTS. THE BUILDING CODE VERSION CONSIDERED WITH THIS EVALUATION WAS THAT IN FORCE AT THE TIME OF THE EVALUATION. IN THE EVENT OF CODE VERSION CHANGES/UPDATES OR IN THE EVENT THAT NEW OR ADDITIONAL TESTING IS COMPLETED ON THIS PRODUCT, PRIOR TO STATING CODE COMPLIANCE, THE MANUFACTURER SHALL CONFIRM WITH THE EVALUATION ENGINEER OF RECORD THAT EVERYTHING SPECIFIED HERE-IN IS CURRENT WITH ALL CURRENT TESTING, CODES AND APPLICABLE STANDARDS.

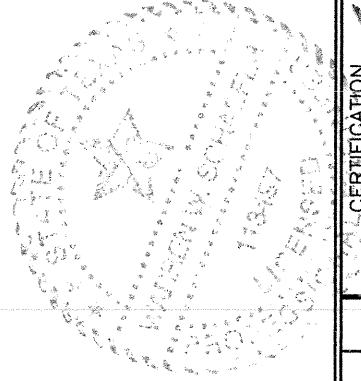
- GENERAL NOTES:**
1. THIS PRODUCT HAS BEEN TESTED, ANALYZED & APPROVED FOR DESIGN PRESSURES NOT TO EXCEED THOSE SHOWN IN THE "ALLOWABLE DESIGN PRESSURE TABLE(S).
 2. OPENINGS, BUCKING & BUCKING FASTENERS MUST BE PROPERLY DESIGNED & INSTALLED TO TRANSFER WIND LOADS TO THE STRUCTURE.
 3. ALL HARDWARE & FASTENERS SHALL BE IN ACCORDANCE WITH THESE DRAWINGS & SHALL NOT VARY UNLESS SPECIFICALLY MENTIONED ON THE DRAWINGS. SPECIFIED ANCHOR EMBED TO BASE MATERIAL SHALL BE BEYOND WALL FINISH OR STUCCO.
 4. THE DETAILS & SPECIFICATIONS SHOWN HEREIN REPRESENT THE PRODUCTS TESTED & PROPOSED FOR WATER, AIR, IMPACT, CYCLIC & UNIFORM STATIC AIR PRESSURE TESTING IN CONFORMANCE WITH 2018 IBC REFERENCED STANDARDS AAMA 1304 & ASTM E330, E1886 & E1996 FOR WIND ZONE 3 LARGE MISSILE IMPACT PRODUCTS. ALL TESTING OF THIS PRODUCT TO STANDARDS LESS CURRENT THAN THOSE SPECIFIED IN THE 2018 IBC HAS BEEN DETERMINED EQUIVALENT TO THE MORE CURRENT VERSIONS OF THOSE STANDARDS REFERENCED IN THE 2018 IBC.
 5. THIS PRODUCT HAS BEEN DESIGNED IN ACCORDANCE WITH AND MEETS THE REQUIREMENTS OF THE 2018 INTERNATIONAL BUILDING CODE (IBC).
 6. IMPACT SHUTTERS ARE NOT REQUIRED WITH THIS PRODUCT.
 7. ALL ANCHORS SECURING PRODUCT FRAMES TO PRESSURE TREATED BUCKS OR WOOD FRAMING SHALL BE CAPABLE OF RESISTING CORROSION CAUSED BY THE PRESSURE TREATING CHEMICALS IN THE WOOD.
 8. DETERMINE THE POSITIVE & NEGATIVE DESIGN LOADS TO USE WHEN REFERENCING THESE DOCUMENTS IN ACCORDANCE WITH THE GOVERNING CODE AND GOVERNING WIND VELOCITY. FOR WIND LOAD CALCULATIONS IN ACCORDANCE WITH THE INTERNATIONAL BUILDING CODE, A DIRECTIONALITY FACTOR OF KD = 0.85 MAY BE APPLIED PER THE ASCE-7 STANDARD.
 9. MATERIALS, INCLUDING BUT NOT LIMITED TO STEEL SCREWS, THAT COME INTO CONTACT WITH OTHER DISSIMILAR MATERIALS SHALL BE SEPARATED OR COATED AS REQUIRED TO AVOID CORROSION OF EITHER MATERIAL.
 10. TO THE BEST OF OUR KNOWLEDGE, THE PRODUCT SHOWN HEREIN ARE QUALITY ASSURED BY AN APPROVED CERTIFICATION/QA ENTITY & SHALL BE LABELED IN ACCORDANCE WITH APPLICABLE STANDARDS. THESE DRAWINGS SHOW ALL APPLICABLE ELEVATION, COMBINATION, INSTALLATION & COMPARATIVE ANALYSIS CONDITIONS AS DETERMINED THROUGH TESTING & ENGINEERING RATIONAL ANALYSIS. PRODUCT ASSEMBLY SHALL BE IN ACCORDANCE WITH THESE DRAWINGS, THE MANUFACTURER'S QUALITY ASSURANCE SPECIFICATIONS & TESTING REPORTS.
 11. CERTIFICATION OF THIS PRODUCT SHALL BE CONSIDERED VOID IF THEY ARE INSTALLED WITHOUT A BUILDING PERMIT FROM THE APPLICABLE LOCAL BUILDING DEPARTMENT OR IF THEY ARE INSTALLED BY ANYONE OTHER THAN A LICENSED CONTRACTOR EXPERIENCED WITH INSTALLATIONS OF THIS TYPE OF PRODUCT.

TO AVOID CONFUSION, LOCK CONDITIONS ARE NOT CALLED OUT/SPECIFIED IN THE ELEVATIONS. SEE PRESSURE TABLES ON SHEET 5 & PARTS LIST ON SHEET 13 FOR ALL LOCK OPTIONS.

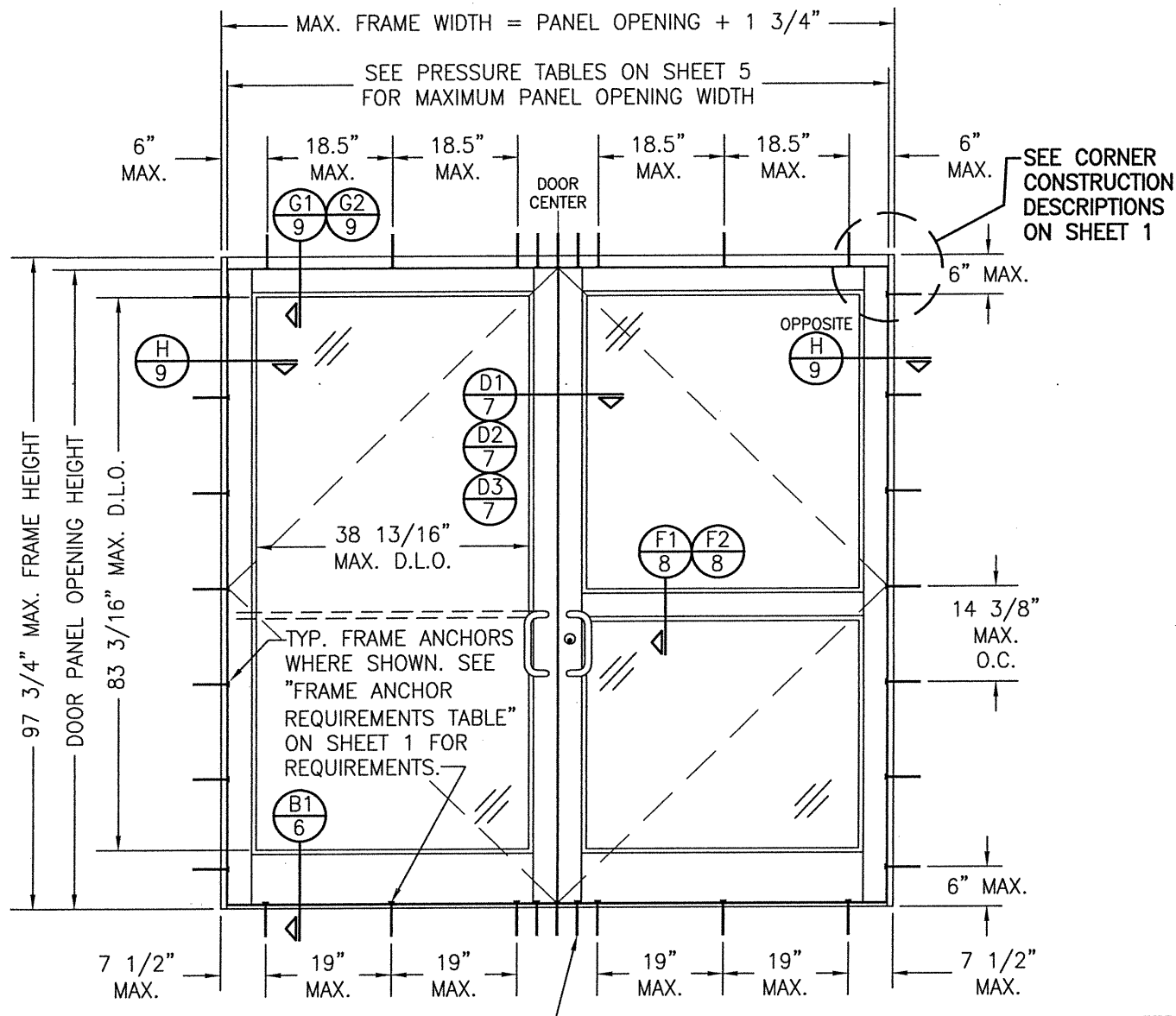
AT HEAD & SILL, CLUSTER ANCHORS AS SHOWN AT MEETING STILE ENDS SPACED 3" APART. CLUSTER 6 ANCHORS WITH ANCHOR TYPE A; CLUSTER 5 ANCHORS WITH ANCHOR TYPES B, C, D & F (ANCHOR "E" IS NOT APPLICABLE AT HEAD & SILL).

| FRAME ANCHOR REQUIREMENTS TABLE | | | | |
|---------------------------------|--|-------------------------------------|---------------|--------------------|
| FRAME & SILL ANCHORS | | | | |
| ANCHOR TYPE | OPENING TYPE (SUBSTRATE) | JAMB TO OPENING FASTENER TYPE | MINIMUM EMBED | MINIMUM EDGE DIST. |
| A | 2X_ WOOD FRAME OR BUCK (MIN. GR. 3 & G=0.55) | NO. 14 SMS SCREW | 1 1/4" | 3/4" |
| B | MIN. 16 GA. 50 KSI METAL STUD | (2) NO. 12 SELF DRILL/TAPPING SCREW | FULL | 1/2" |
| C | MIN. 0.22" THICK A36 STEEL | (2) 1/4-20 SELF DRILL/TAPPING SCREW | FULL | 1/2" |
| D | MIN. 3000 P.S.I. CONCRETE | (1) 1/4" CONCRETE SCREW | 1 3/4" | 2 1/2" |
| E | MIN. C90 CONCRETE FILLED BLOCK | (1) 1/4" CONCRETE SCREW | 1 1/2" | 2 1/2" |
| F | CURTAIN WALL | (2) 1/4-20 SELF DRILL/TAPPING SCREW | FULL | 1/2" |

(1) CONCRETE SCREWS SHALL BE ELCO ULTRACONS (C.S.), ELCO CRETE-FLEX (S.S.) OR HILTI KWIK-CON II (C.S OR S.S.).
(2) SELF DRILLING & SELF TAPPING SCREWS SHALL BE MIN. GRADE 5 CORROSION RESISTANT STEEL



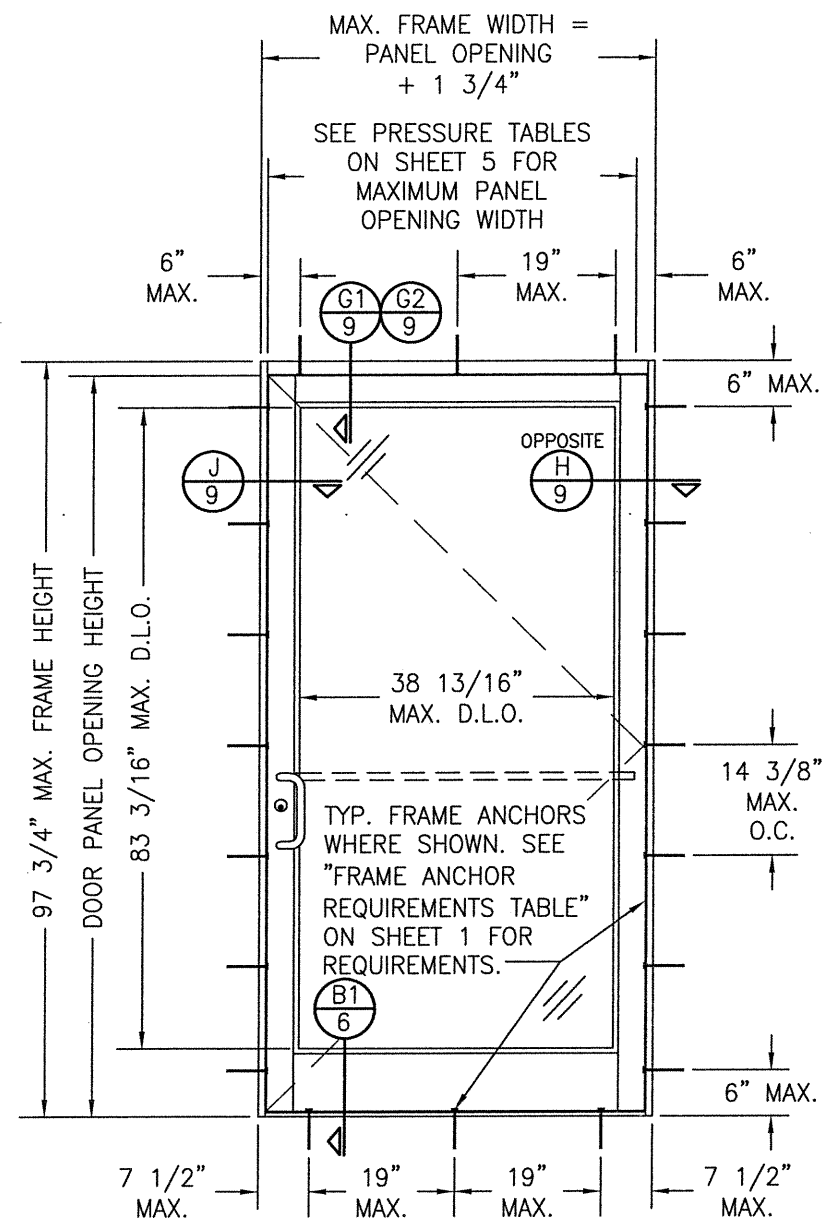
| | |
|--|-----------------------|
| DRAWN BY: W.R.M. | CHECKED BY: W.W.S. |
| PLOT: 1-24 | DATE: 08/11/14 |
| DATE: 02/11/21 | |
| BY: W.W.S. | |
| REVISION DESCRIPTION: | |
| NO.: | |
| AT UPDATE TO 2018 IBC | |
| DRAWING TITLE: 350/500IR OUTSWING ZONE 3 IMPACT STOREFRONT DOORS | |
| JOB INFORMATION: KAWNEER COMPANY, INC. 555 GUTHRIDGE COURT NORCROSS, GA 30092 770-449-5555 | |
| CONSULTANTS: W. W. SCHAEFER ENGINEERING & CONSULTING, P.A. (REG. NO. F-14980) 7480 150TH COURT NORTH, 33418 PALM BEACH GARDENS, FL PHONE: 561-744-3424 | |
| CERTIFICATION: MAY 13 2021 WARREN W. SCHAEFER, P.E. P.E. NO. 113497 | |
| DRAWING NO. 1882T | REV. A |
| SHEET NO. 1 OF 13 | |



**EXTERIOR ELEVATION:
DOUBLE DOOR WITH STANDARD
FRAMING & STANDARD INSTALLATION**
SCALE: 1/2" = 1'-0"
(APPLICABLE WITH ALL HINGE TYPES)

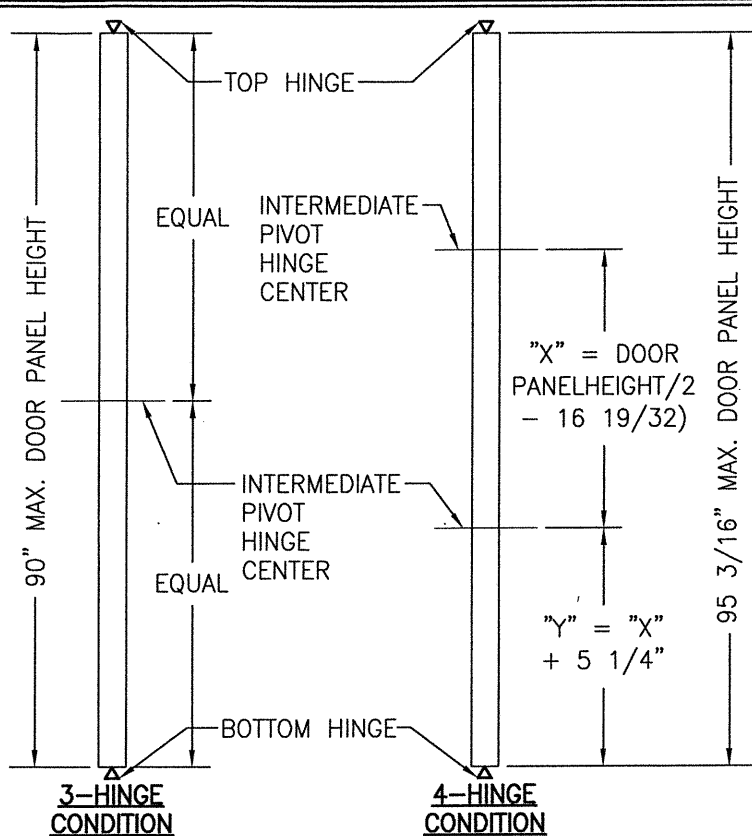
AT HEAD & SILL, CLUSTER ANCHORS AS SHOWN AT MEETING STILE ENDS SPACED 3" APART. CLUSTER 6 ANCHORS WITH ANCHOR TYPE A; CLUSTER 5 ANCHORS WITH ANCHOR TYPES B, C, D & F (ANCHOR "E" IS NOT APPLICABLE AT HEAD & SILL).

ALLOWABLE DESIGN PRESSURE
SEE SHEET 5

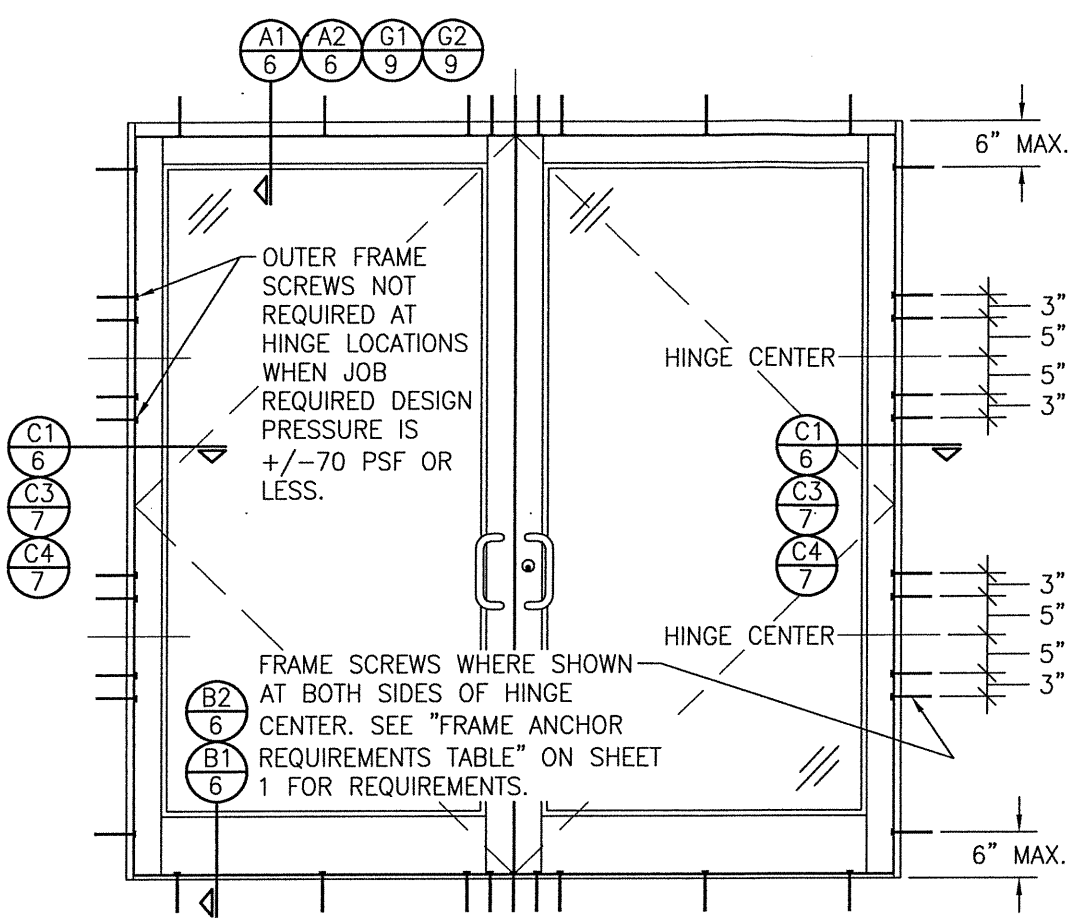


**EXTERIOR ELEVATION:
SINGLE DOOR WITH STANDARD
FRAMING & STANDARD INSTALLATION**
SCALE: 1/2" = 1'-0"
(APPLICABLE WITH ALL HINGE TYPES)

| | | | |
|--|----------------------|---|------|
| DRAWN BY: W.R.M. | | CHECKED BY: W.W.S. | |
| PLOT: 1-24 | | DATE: 08/11/14 | |
| NO. | REVISION DESCRIPTION | BY | DATE |
| | | | |
| DRAWING TITLE 350/500R OUTSWING ZONE 3 IMPACT STOREFRONT DOORS | | | |
| CONSULTANTS W. W. SCHAEFER ENGINEERING & CONSULTING, P.A. (REG. NO. F-14980) | | JOB INFORMATION: KAWNEER COMPANY, INC. 555 GUTHRIDGE COURT NORCROSS, GA 30092 770-449-5555 | |
| 7480 150TH COURT NORTH PALM BEACH GARDENS, FL 33418 PHONE: 561-744-3424 | | CERTIFICATION MAY 13 2021 WARREN W. SCHAEFER, P.E. P.E. NO. 113497 | |
| DRAWING NO. 1882T | | REV. A | |
| SHEET NO. 2 | | OF 13 | |

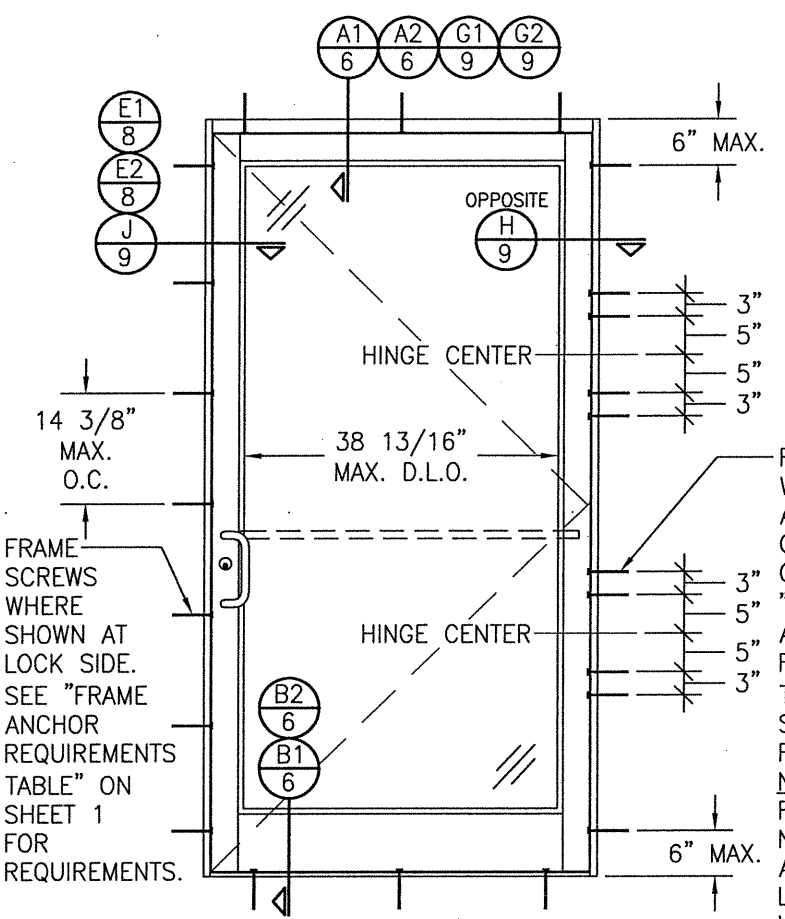


PIVOT HINGE LOCATION DIAGRAMS
(APPLICABLE TO ALL DOORS)



**EXTERIOR ELEVATION:
DOUBLE DOOR WITH ALTERNATE
INSTALLATION CONDITION**

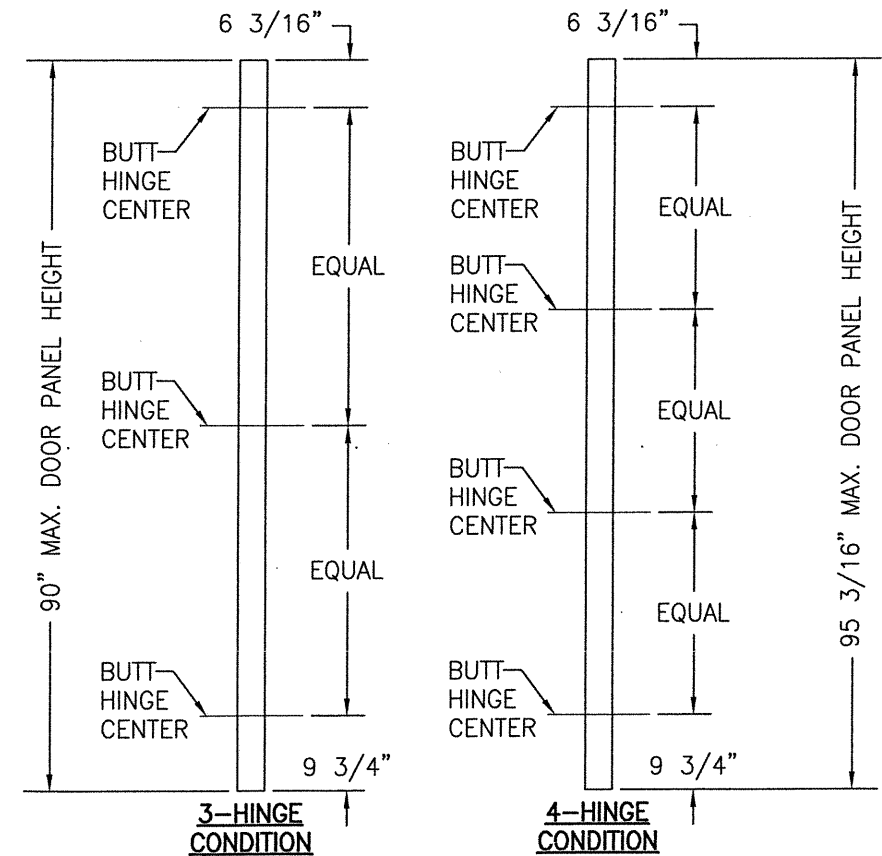
SCALE: 1/2" = 1'-0"
(APPLICABLE WITH BUTT & PIVOT HINGE DOORS ONLY)
(FOR DOOR DETAIL & HARDWARE NOT SHOWN, SEE
ELEVATIONS ON SHEETS 1 & 2)
(ELEVATION SHOWN WITH STANDARD FRAMING.
STOREFRONT FRAMING ALSO APPLIES)



**EXTERIOR ELEVATION:
SINGLE DOOR WITH ALTERNATE
INSTALLATION CONDITION**

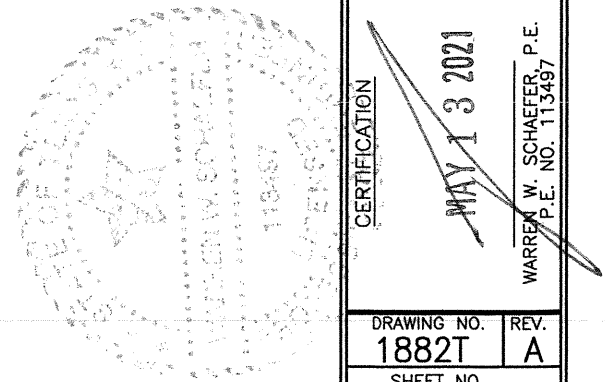
SCALE: 1/2" = 1'-0"
(APPLICABLE WITH BUTT & PIVOT HINGE DOORS ONLY)
(FOR DOOR DETAIL & HARDWARE NOT SHOWN, SEE
ELEVATIONS ON SHEETS 1 & 2)
(ELEVATION SHOWN WITH STANDARD FRAMING.
STOREFRONT FRAMING ALSO APPLIES)

FRAME SCREWS WHERE SHOWN AT BOTH SIDES OF HINGE CENTER. SEE "FRAME ANCHOR REQUIREMENTS TABLE" ON SHEET 1 FOR REQUIREMENTS. NOTE: OUTER FRAME SCREWS NOT REQUIRED AT HINGE LOCATIONS WHEN JOB REQUIRED DESIGN PRESSURE IS +/- 70 PSF OR LESS.

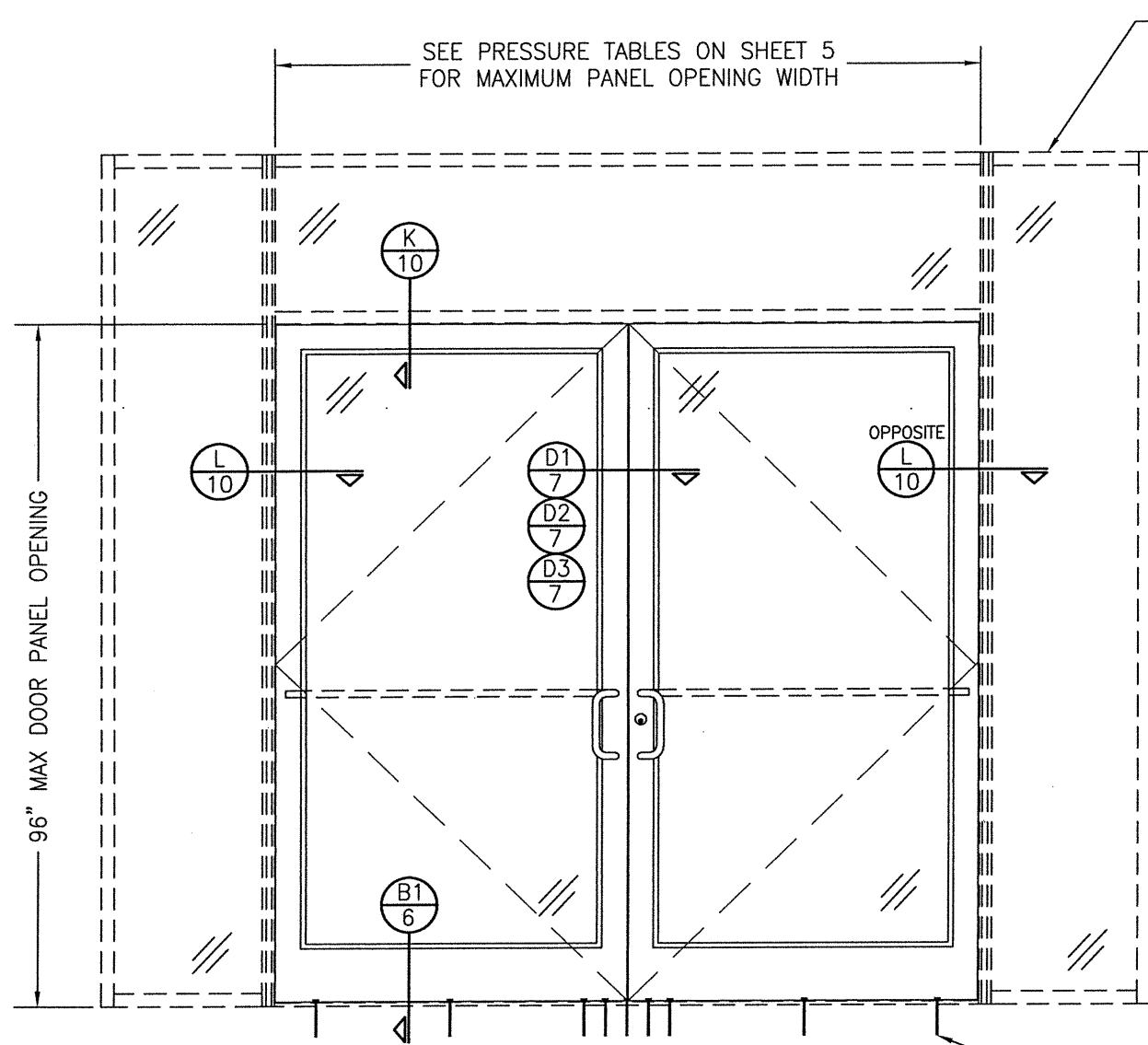


PIVOT HINGE LOCATION DIAGRAMS
(APPLICABLE TO ALL DOORS)

ALLOWABLE DESIGN PRESSURE
SEE SHEET 5



| | | | |
|---|----------|-----------------------|------|
| DRAWN BY: W.R.M. | | CHECKED BY: W.W.S. | |
| PLOT: 1-24 | | DATE: 08/11/14 | |
| NO. | REVISION | DESCRIPTION | DATE |
| | | | |
| DRAWING TITLE 350/500IR OUTSWING ZONE 3 IMPACT STOREFRONT DOORS | | | |
| JOB INFORMATION: KAWNEER COMPANY, INC. 555 GUTHRIDGE COURT NORCROSS, GA 30092 770-449-5555 | | | |
| CONSULTANTS W. W. SCHAEFER ENGINEERING & CONSULTING, P.A. (REG. NO. F-14980) 7480 150TH COURT NORTH PALM BEACH GARDENS, FL 33418 PHONE: 561-744-3424 | | | |
| DRAWING NO. 1882T | | | |
| REV. A | | | |
| SHEET NO. 3 OF 13 | | | |



EXTERIOR ELEVATION:
DOORS INSIDE IR-500 OR IR-501 STORE FRONT SYSTEM
 SCALE: 1/2"=1'-0"

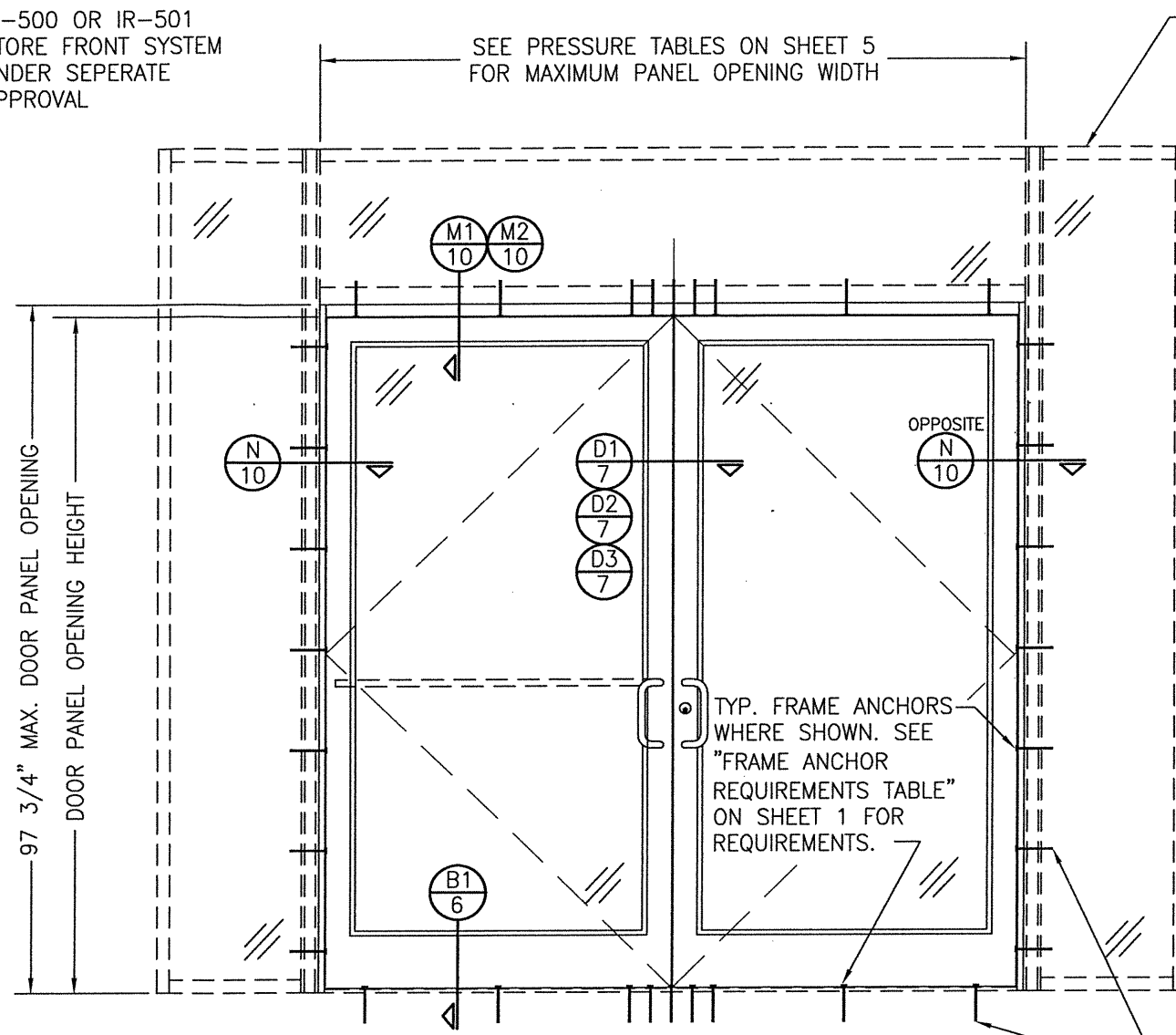
NOTES:

1. FOR DETAILS NOT SHOWN, SEE ELEVATIONS ON SHEETS 1 & 3.
2. DOUBLE DOOR SHOWN; SINGLE DOOR CONDITION ALSO APPLIES.
3. FOR STORE FRONT FRAMING REQUIREMENTS & INSTALLATION, SEE RESPECTIVE STORE FRONT APPROVAL.
4. LESSER ALLOWABLE PRESSURE RATING OF THE DOORS & STOREFRONT SHALL CONTROL FOR THE OVERALL ASSEMBLY.

IR-500 OR IR-501
 STORE FRONT SYSTEM
 UNDER SEPERATE
 APPROVAL

SEE ELEVATION
 SHEET 1 FOR SILL
 ANCHOR
 REQUIREMENTS &
 ANCHOR LOCATIONS

ALLOWABLE DESIGN PRESSURE
 SEE SHEET 5



EXTERIOR ELEVATION:
DOORS INSIDE 1600 SYSTEM 1 CURTAIN WALL
 SCALE: 1/2"=1'-0"

NOTES:

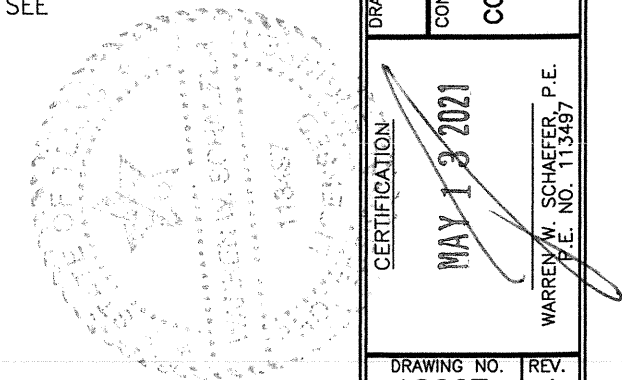
1. FOR DETAILS NOT SHOWN, SEE ELEVATIONS ON SHEETS 2 & 3.
2. DOUBLE DOOR SHOWN; SINGLE DOOR CONDITION ALSO APPLIES.
3. FOR STORE FRONT FRAMING REQUIREMENTS & INSTALLATION, SEE RESPECTIVE STORE FRONT APPROVAL.
4. LESSER ALLOWABLE PRESSURE RATING OF THE DOORS & STOREFRONT SHALL CONTROL FOR THE OVERALL ASSEMBLY.

SEE PRESSURE TABLES ON SHEET 5
 FOR MAXIMUM PANEL OPENING WIDTH

TYP. FRAME ANCHORS
 WHERE SHOWN. SEE
 "FRAME ANCHOR
 REQUIREMENTS TABLE"
 ON SHEET 1 FOR
 REQUIREMENTS.

1600 SYSTEM 1
 CURTAIN WALL
 UNDER
 SEPERATE
 APPROVAL

SEE ELEVATION
 SHEET 2 FOR
 ANCHOR
 REQUIREMENTS
 & ANCHOR
 LOCATIONS



| | | | |
|---|----------|-----------------------|------|
| DRAWN BY: W.R.M. | | CHECKED BY: W.W.S. | |
| PLOT: 1=24 | | DATE: 08/11/14 | |
| NO. | REVISION | DESCRIPTION | DATE |
| | | | |
| DRAWING TITLE 350/500IR OUTSWING ZONE 3 IMPACT STOREFRONT DOORS | | | |
| JOB INFORMATION: KAWNEER COMPANY, INC. 555 GUTHRIDGE COURT NORCROSS, GA 30092 770-449-5555 | | | |
| CONSULTANTS W. W. SCHAEFER ENGINEERING & CONSULTING, P.A. (REG. NO. F-14980) 7480 150TH COURT NORTH PALM BEACH GARDENS, FL 33418 PHONE: 561-744-3424 | | | |
| CERTIFICATION MAY 13 2021 WARREN W. SCHAEFER, P.E. P.E. NO. 113497 | | | |
| DRAWING NO. 1882T | | REV. A | |
| SHEET NO. 4 OF 13 | | | |

**ALLOWABLE DESIGN PRESSURE
(AS RESTRICTED BY GLASS & GLAZING)**

| MAXIMUM DOOR PANEL OPENING WIDTH (IN.) | | APPLICABLE GLAZING DETAIL | APPLICABLE GLASS OPTIONS | ALLOWABLE PRESSURE (+/-PSF) |
|--|-------------|---------------------------|--------------------------|-----------------------------|
| DOUBLE DOOR | SINGLE DOOR | | | |
| 96 | 48 | 1 | 1 & 2 | 65 |
| 96 | 48 | 2 | 1, 2, 3 & 5 | 70 |
| 96 | 48 | 2 & 4 | 4 & 6 | 90 |
| 96 | 48 | 4 | 7 & 8 | 60 |
| 96 | 48 | 3 & 5 | 3 & 6 | 70 |
| 84 | 42 | 1 | 3 & 4 | 90 |

**ALLOWABLE DESIGN PRESSURE
(AS RESTRICTED BY PANIC DEVICE LOCK CONDITIONS)**

| MAXIMUM DOOR PANEL OPENING WIDTH (IN.) | | PANIC DEVICE | ALLOWABLE PRESSURE (+/-PSF) |
|--|-------------|---------------------------|-----------------------------|
| DOUBLE DOOR | SINGLE DOOR | | |
| 96 | 48 | SARGENT AD8400 | 70 |
| 96 | 48 | ADAMS RITE G86 | 70 |
| 96 | 48 | CALIBRE 9100 | 70 |
| 96 | 48 | VON DUPRIN HH9947 | 65 |
| 96 | 48 | JACKSON 2086 | 90 |
| 84 | 42 | KAWNEER 1686 | 90 |
| 96 | 48 | | 70 |
| 96 | 48 | PANELINE CR-90 | 70 |
| 96 | 48 | SARGENT 8400 | 65 |
| 96 | 48 | CORBIN RUSSWIN ED5200S(A) | 50 |
| 84 | 42 | VON DUPRIN XP 98/99 | 50 |
| 72 | 36 | FALCON HH1690 | 65 |

THIS HARDWARE IS RESTRICTED TO USE IN DOORS WITH A MAXIMUM PANEL HEIGHT OF 90".

PRESSURE TABLE NOTES (ALL TABLES)

- CONDITIONS IN THESE TABLES ARE APPLICABLE FOR ALL DOORS TO THEIR MAXIMUM PANEL HEIGHT OF 96" EXCEPT FOR THE DOORS WITH VON DUPRIN XP 98/99 PANIC DEVICE WHICH ARE RESTRICTED TO A 90" PANEL HEIGHT.
- SEE GLAZING DETAILS ON THIS SHEET FOR GLAZING DETAILS & GLASS OPTIONS APPLICABLE TO THESE TABLES.
- SEE ELEVATIONS FOR VIEW OF DOOR PANEL OPENING HEIGHT & WIDTH.
- THE LESSER PRESSURE IN ANY ONE TABLE SHALL CONTROL AS THE ALLOWABLE PRESSURE ON THE DOOR ASSEMBLY.
- IF DOOR IS WATER RATED, THE POSITIVE DESIGN PRESSURE SHALL BE LIMITED TO +80 PSF. REFERENCE "WATER RATING NOTE" ON SHEET 1.

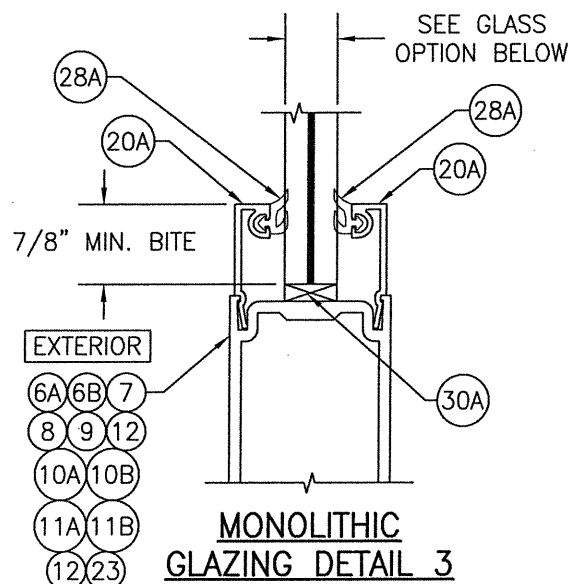
NOTE: 3 HINGES PER DOOR PANEL IS ONLY APPLICABLE WITH DOOR OPENING PANEL HEIGHTS OF 90" & LESS

**ALLOWABLE DESIGN PRESSURE
(AS RESTRICTED BY MULTI-POINT LOCK CONDITIONS)**

| MAXIMUM DOOR PANEL OPENING WIDTH (IN.) | | LOCK CONDITION | ALLOWABLE PRESSURE (+/-PSF) |
|--|-------------|----------------|-----------------------------|
| DOUBLE DOOR | SINGLE DOOR | | |
| 96 | 48 | 1 | 70 |
| 84 | 42 | 1 | 90 |
| 96 | 48 | 2 | 90 |

LOCK CONDITION 1:
ACTIVE DOOR: SEE ITEM #39 ON SHEET 13 FOR LOCK REQUIREMENTS
INACTIVE DOOR: SEE ITEM #40 ON SHEET 13 FOR LOCK REQUIREMENTS

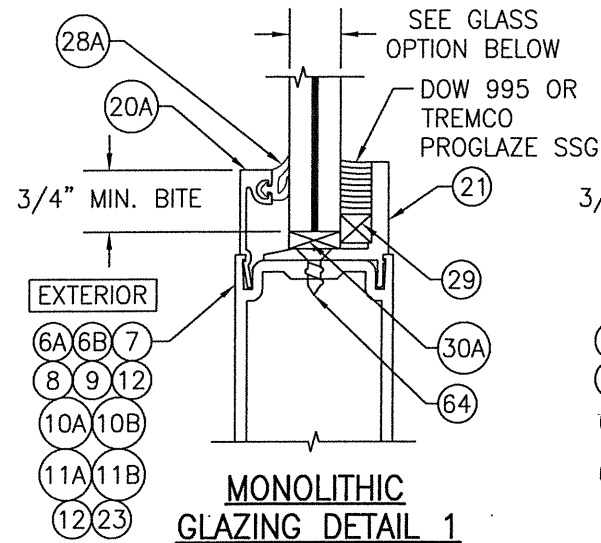
LOCK CONDITION 2:
ACTIVE DOOR: SEE ITEM #41 ON SHEET 13 FOR LOCK REQUIREMENTS
INACTIVE DOOR: SEE ITEM #42 ON SHEET 13 FOR LOCK REQUIREMENTS



GLASS OPTIONS FOR GLAZING DETAIL 3:
OPTION 3: 9/16" THICK LAMINATED GLASS (1/4" HT. ST./0.09 KURARAY SG/1/4" HT. ST.)

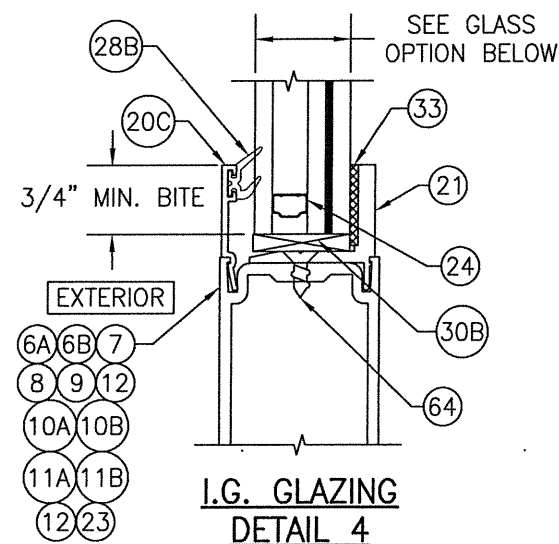
**ALLOWABLE DESIGN PRESSURE
(AS RESTRICTED BY BUTT & PIVOT HINGE QUANTITY)**

| HINGE QUANTITY PER PANEL | ALLOWABLE PRESSURE (+/-PSF) |
|--------------------------|-----------------------------|
| 3 | 70 |
| 4 | 90 |



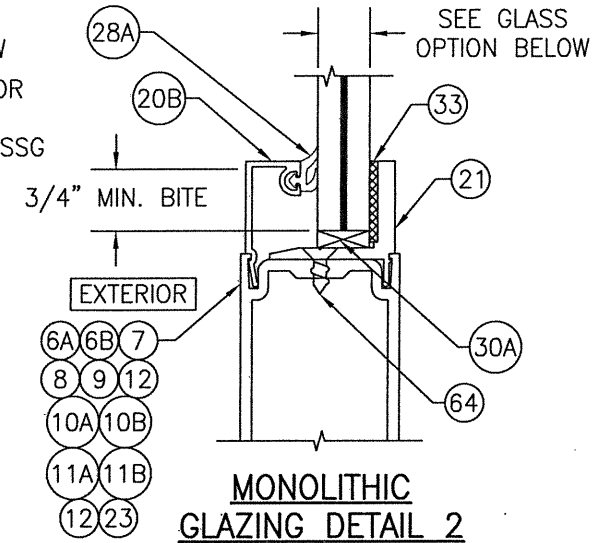
GLASS OPTIONS FOR GLAZING DETAIL 1:

- OPTION 1: 9/16" THICK LAMINATED GLASS (1/4" HT. ST./0.090 EASTMAN CHEMICAL CO. SAFLEX/1/4" HT. ST.)
- OPTION 2: 9/16" THICK LAMINATED GLASS (1/4" HT. ST./0.09 KURARAY BUTICITE PVB/1/4" HT. ST.)
- OPTION 3: 9/16" THICK LAMINATED GLASS (1/4" HT. ST./0.09 KURARAY SG/1/4" HT. ST.)
- OPTION 4: 9/16" THICK LAMINATED GLASS (1/4" HT. ST./0.077" EASTMAN CHEMICAL CO. SAFLEX STORM/1/4" HT. ST.)



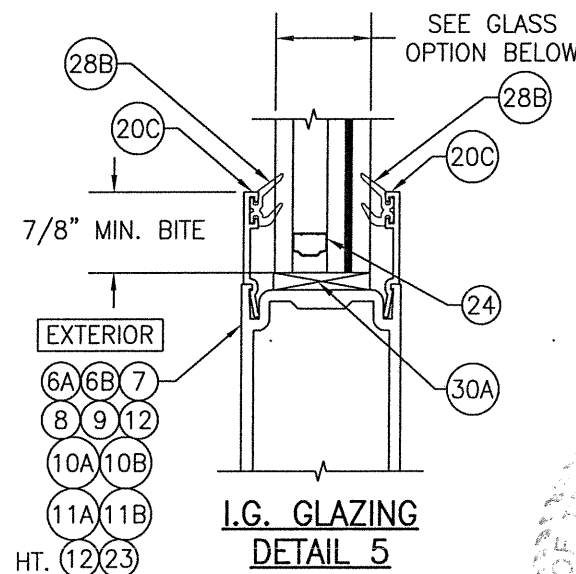
GLASS OPTIONS FOR GLAZING DETAIL 4:

- OPTION 6: 1" THICK I.G. LAMINATED GLASS (3/16" TEMP EXTERIOR; 3/8" AIR SPACE; 3/16" HT. ST./0.090" KURARAY SG/3/16" HT. ST. INTERIOR)
- OPTION 7: 1" THICK I.G. LAMINATED GLASS (3/16" TEMP EXTERIOR; 3/8" AIR SPACE; 3/16" HT. ST./0.090" KURARAY BUTICITE PVB/3/16" HT. ST. INTERIOR)
- OPTION 8: 1" THICK I.G. LAMINATED GLASS (3/16" TEMP EXTERIOR; 3/8" AIR SPACE; 3/16" HT. ST./0.090" EASTMAN CHEMICAL CO. SAFLEX/3/16" HT. ST. INTERIOR)



GLASS OPTIONS FOR GLAZING DETAIL 2:

- OPTION 1: 9/16" THICK LAMINATED GLASS (1/4" HT. ST./0.090 EASTMAN CHEMICAL CO. SAFLEX/1/4" HT. ST.)
- OPTION 2: 9/16" THICK LAMINATED GLASS (1/4" HT. ST./0.09 KURARAY BUTICITE PVB/1/4" HT. ST.)
- OPTION 3: 9/16" THICK LAMINATED GLASS (1/4" HT. ST./0.09 KURARAY SG/1/4" HT. ST.)
- OPTION 4: 9/16" THICK LAMINATED GLASS (1/4" HT. ST./0.077" EASTMAN CHEMICAL CO. SAFLEX STORM/1/4" HT. ST.)
- OPTION 5: 9/16" THICK LAMINATED GLASS (1/4" HT. ST./0.010" EASTMAN CHEMICAL CO. SAFLEX HP/1/4" HT. ST.)



GLASS OPTIONS FOR GLAZING DETAIL 5:

- OPTION 6: 1" THICK I.G. LAMINATED GLASS (3/16" TEMP EXTERIOR; 3/8" AIR SPACE; 3/16" HT. ST./0.090" KURARAY SG/3/16" HT. ST. INTERIOR)

| | |
|----------------------|-----------------------|
| DRAWN BY: W.R.M. | CHECKED BY: W.W.S. |
| PLOT: 1=24 | DATE: 08/11/14 |
| DATE | |
| BY | |
| REVISION DESCRIPTION | |
| NO. | |

DRAWING TITLE: 350/500R OUTSWING ZONE 3 IMPACT STOREFRONT DOORS

CONSULTANTS: W. W. SCHAEFER ENGINEERING & CONSULTING, P.A. (REG. NO. F-14980)

JOB INFORMATION: KAWNEER COMPANY, INC. 555 GUTHRIDGE COURT NORCROSS, GA 30092 770-449-5555

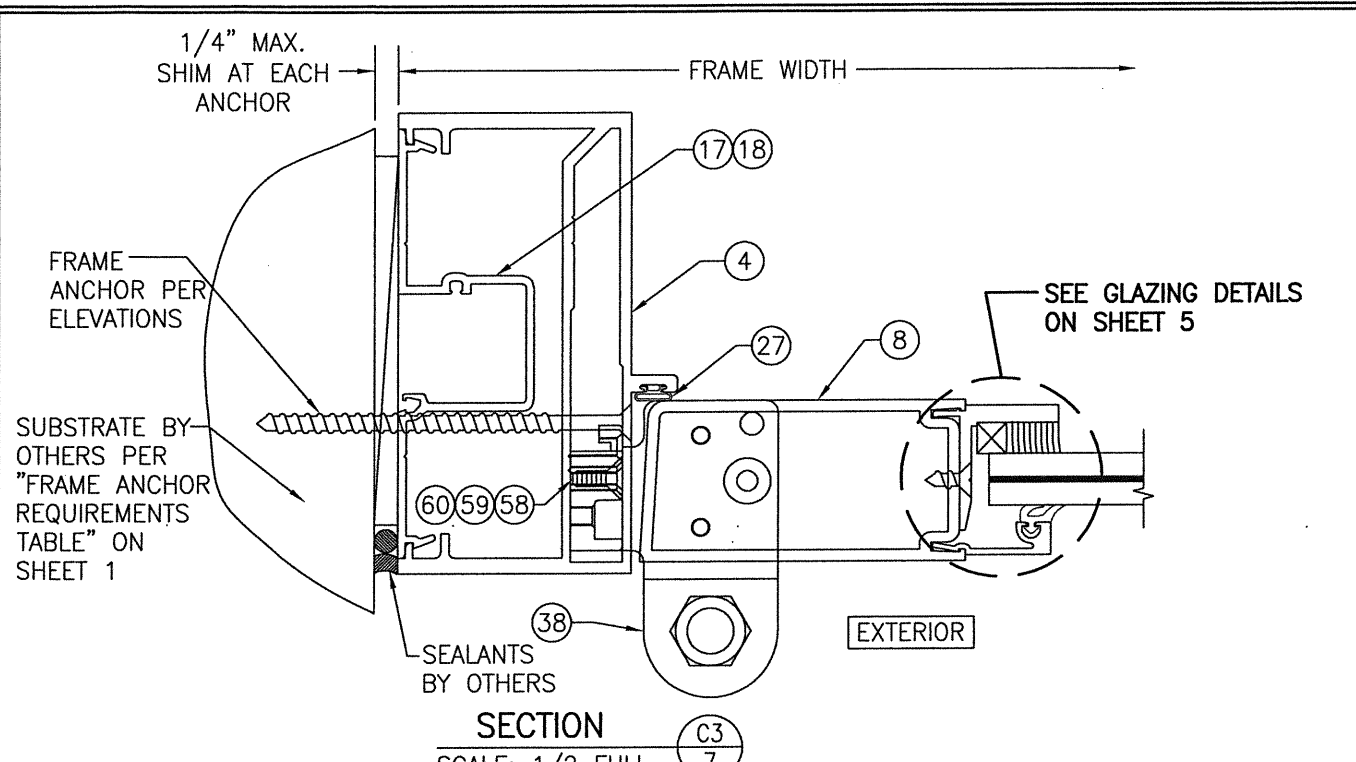
7480 150TH COURT NORTH PALM BEACH GARDENS, FL 33418 PHONE: 561-744-3424

CERTIFICATION: MAY 13 2021

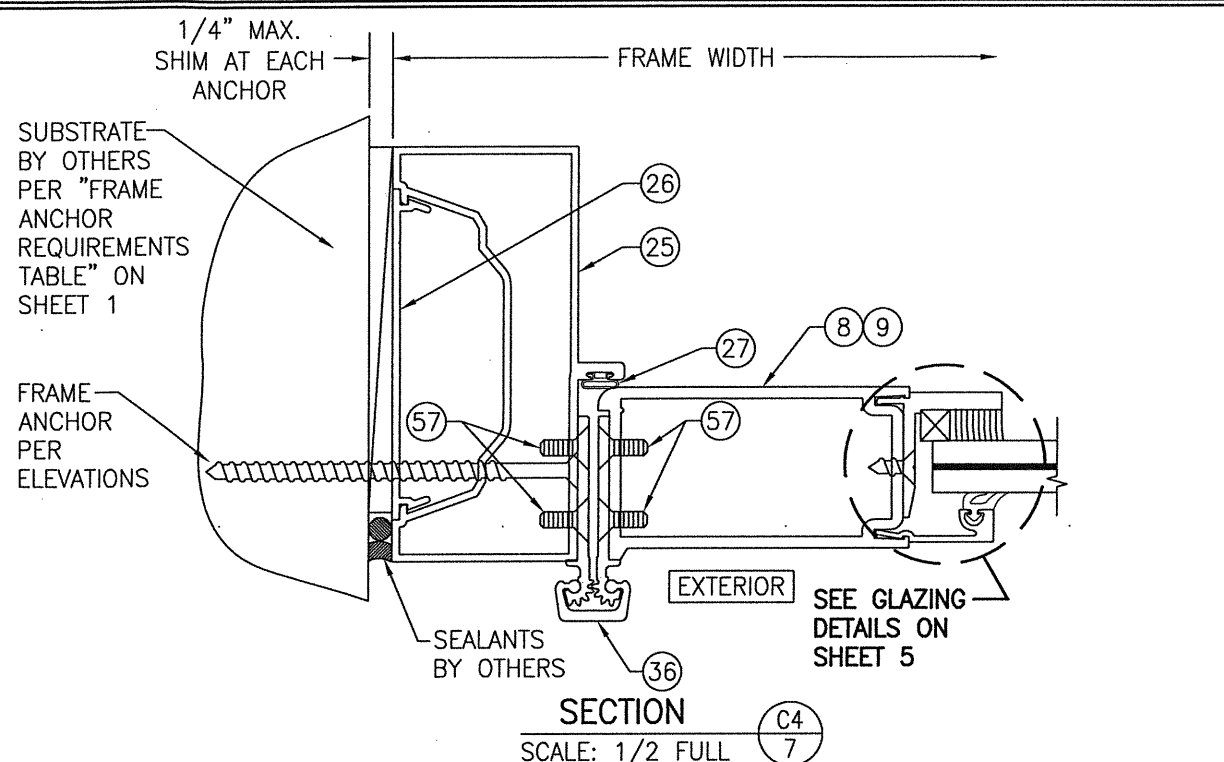
W. W. SCHAEFER, P.E. P.E. NO. 113497

DRAWING NO. 1882T REV. A

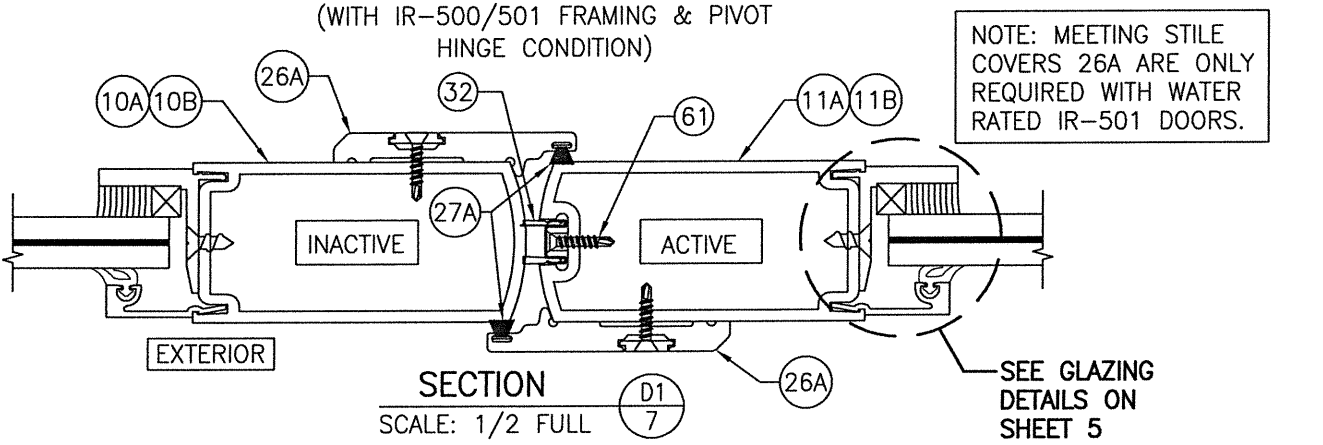
SHEET NO. 5 OF 13



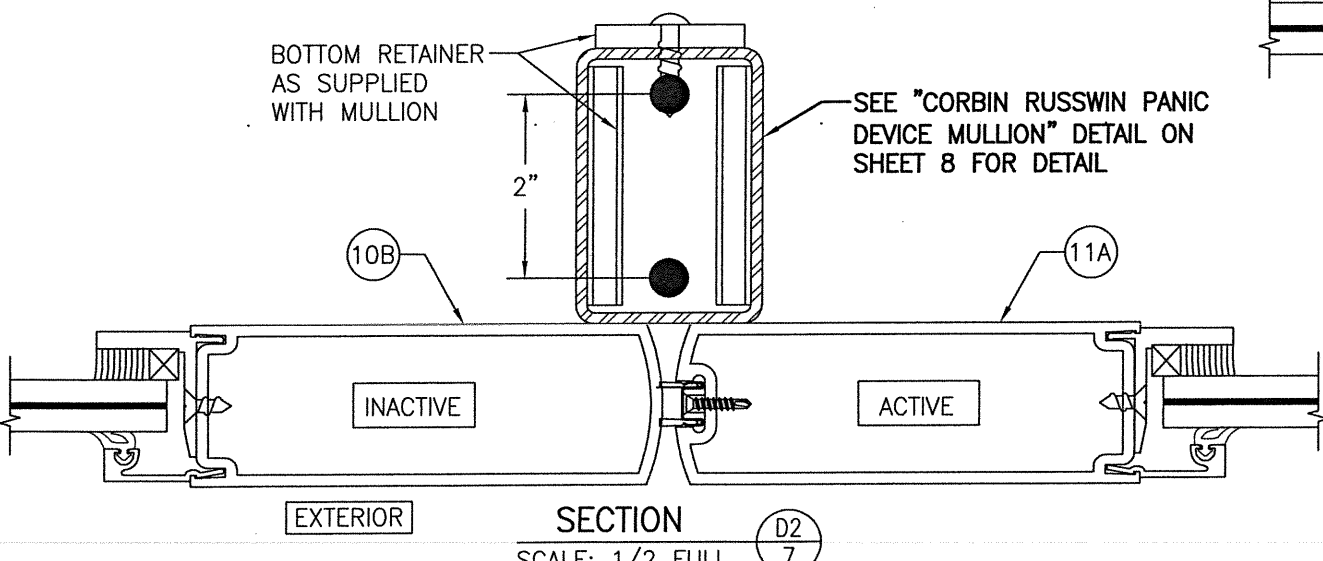
SECTION C3
 SCALE: 1/2 FULL
 (WITH IR-500/501 FRAMING & PIVOT HINGE CONDITION)



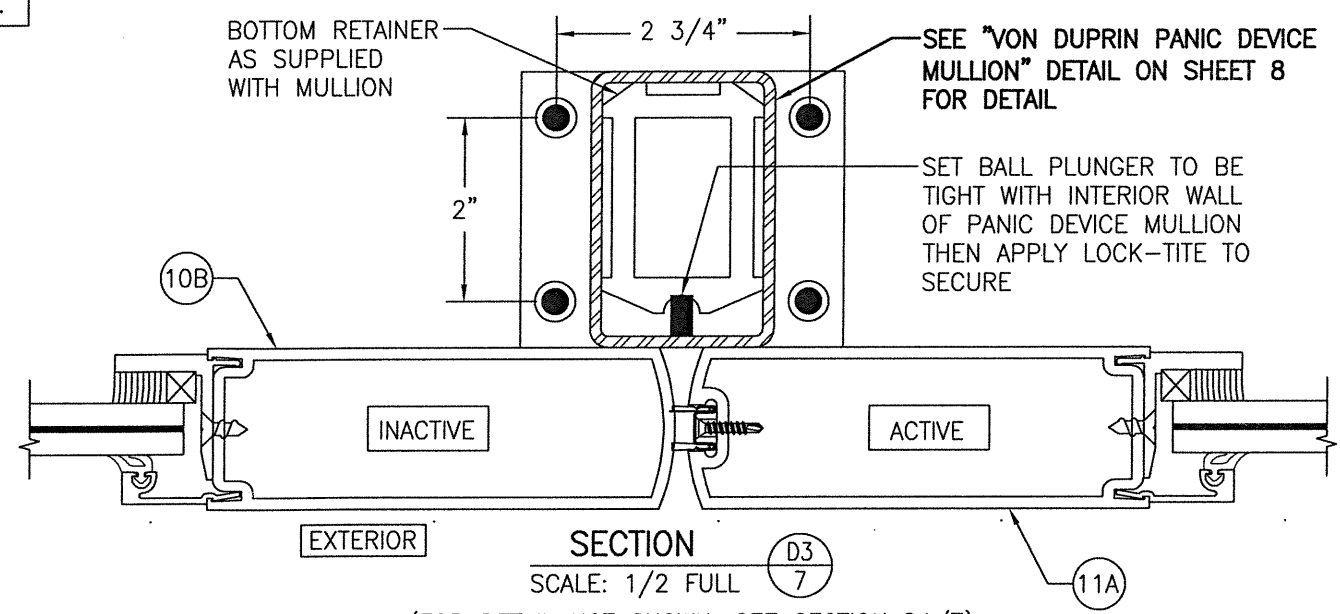
SECTION C4
 SCALE: 1/2 FULL
 (WITH TRIFAB 450/451 FRAMING)
 (GEAR HINGE CONDITION SHOWN. FOR OTHER HINGE CONDITIONS APPLICABLE TO THIS SECTION, SEE SECTIONS C1/6 & C3/7.)



SECTION D1
 SCALE: 1/2 FULL
 (APPLICABLE WITH ALL LOCK CONDITIONS WITH THE EXCEPTION OF CORBIN RUSSWIN & VON DUPRIN PANIC DEVICES ITEM #'S 54 & 44)

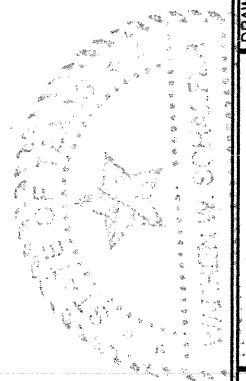


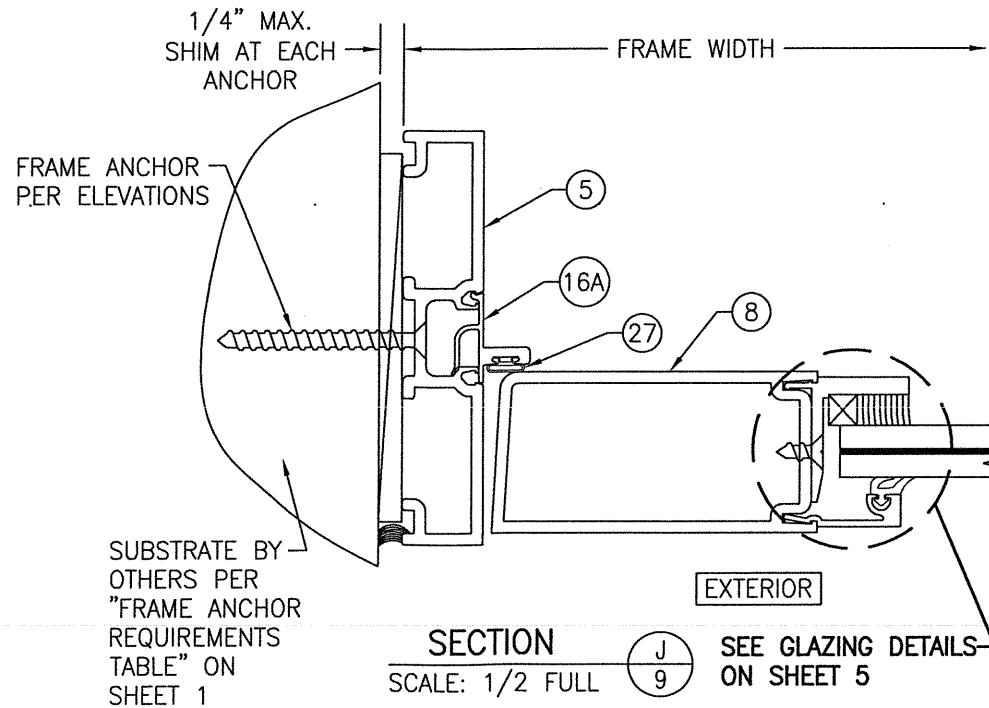
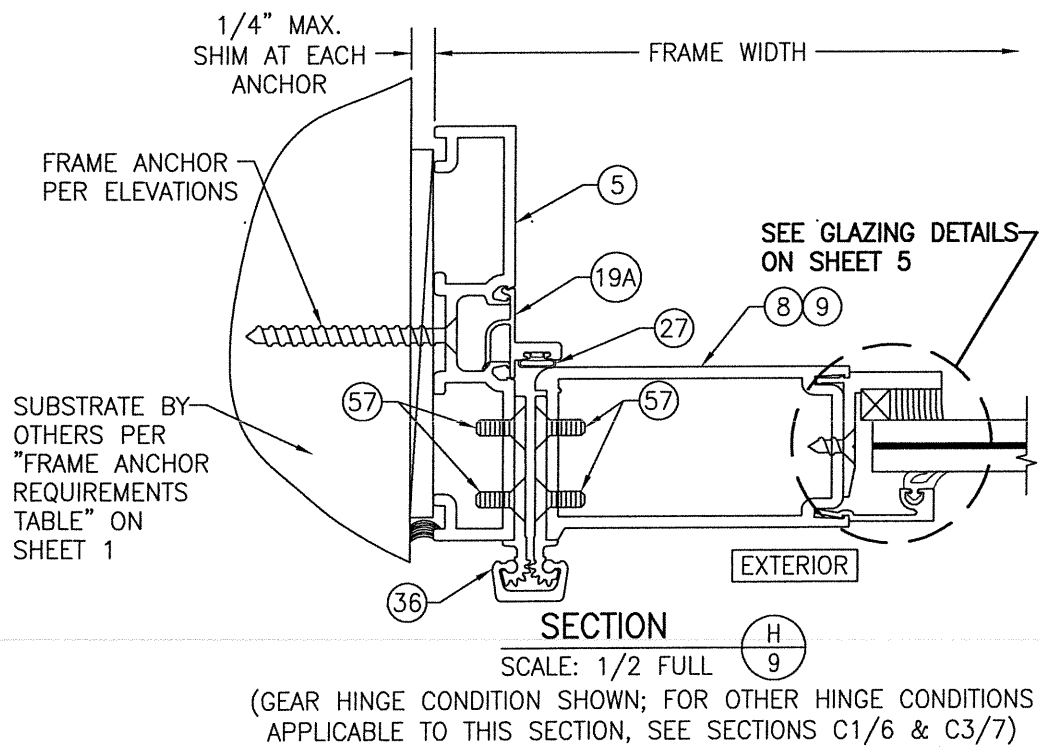
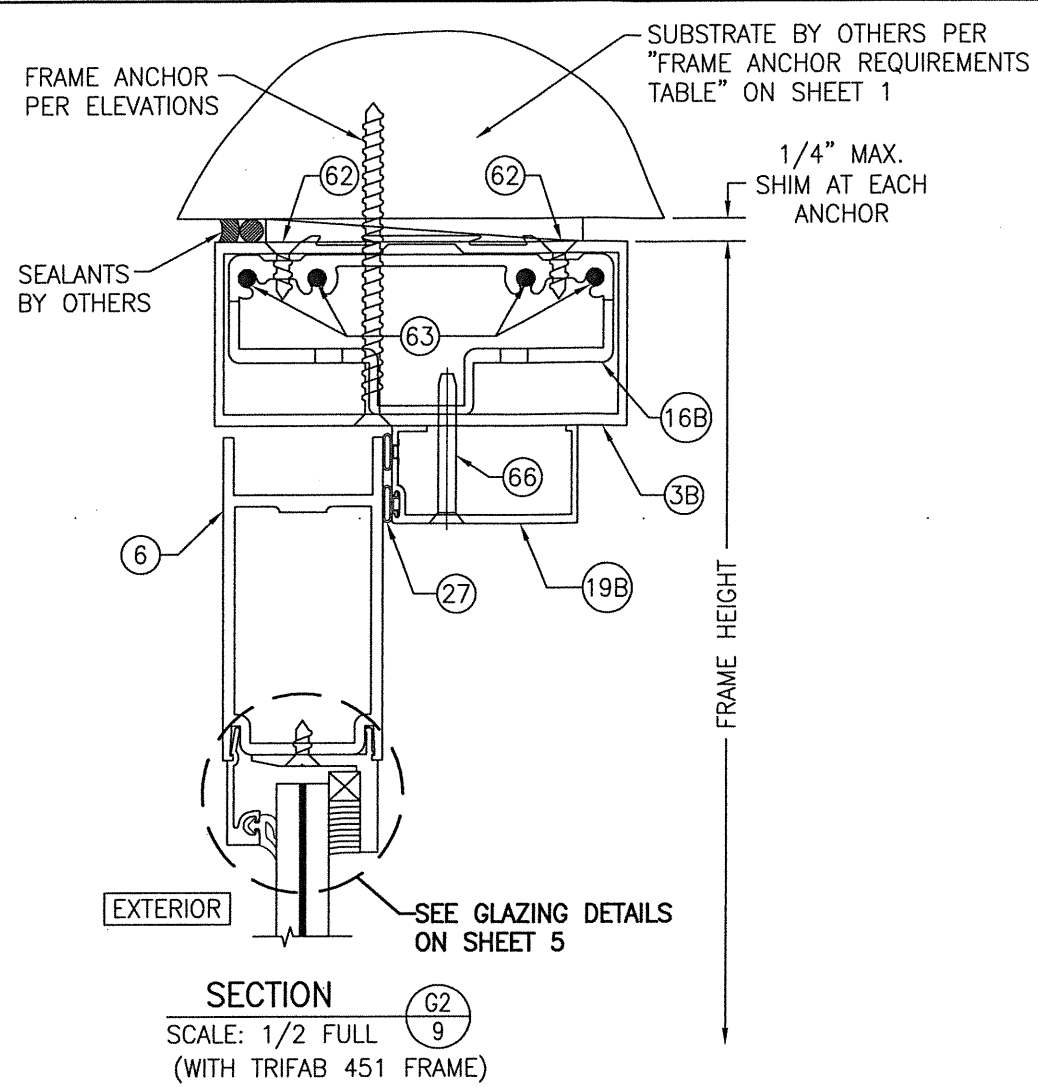
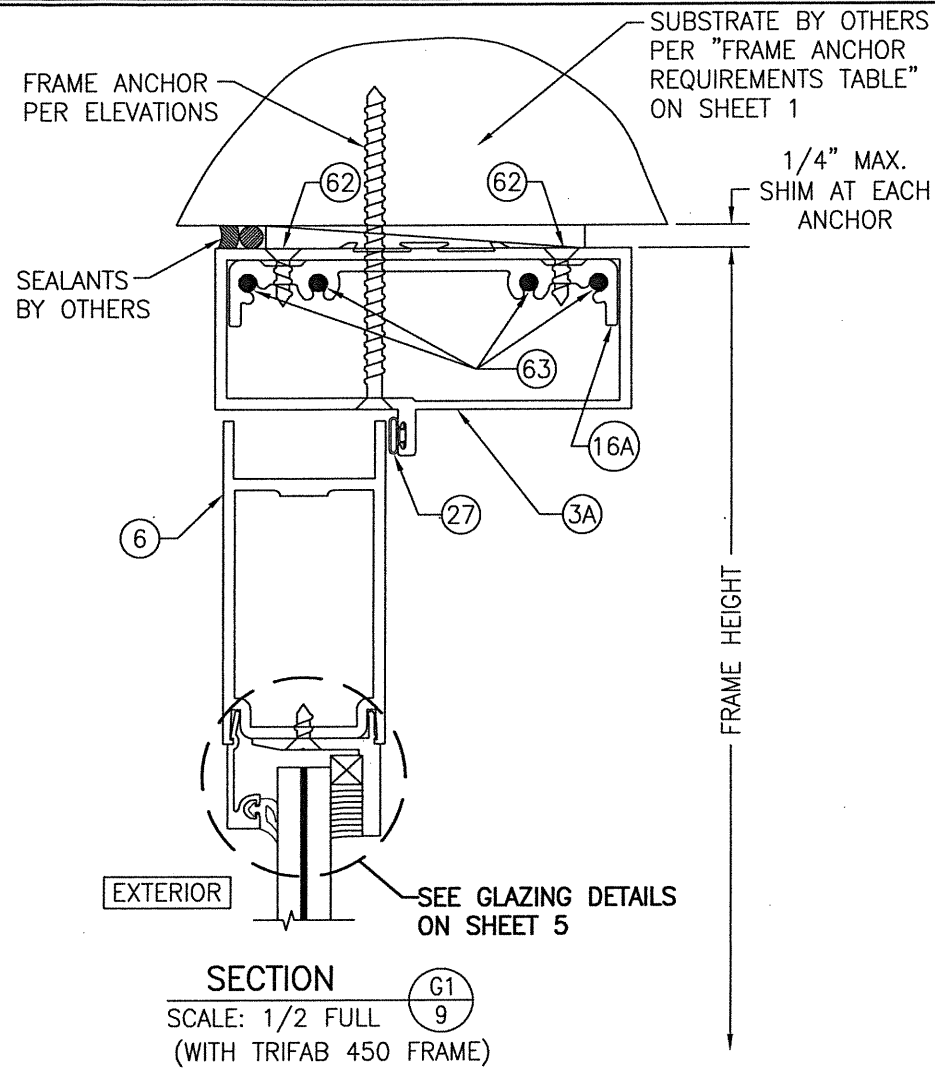
SECTION D2
 SCALE: 1/2 FULL
 (FOR DETAIL NOT SHOWN, SEE SECTION D1/7)
 (APPLICABLE WITH CORBIN RUSSWIN PANIC DEVICE ITEM #54 ONLY)



SECTION D3
 SCALE: 1/2 FULL
 (FOR DETAIL NOT SHOWN, SEE SECTION D1/7)
 (APPLICABLE WITH VON DUPRIN PANIC DEVICE ITEM #44 ONLY)

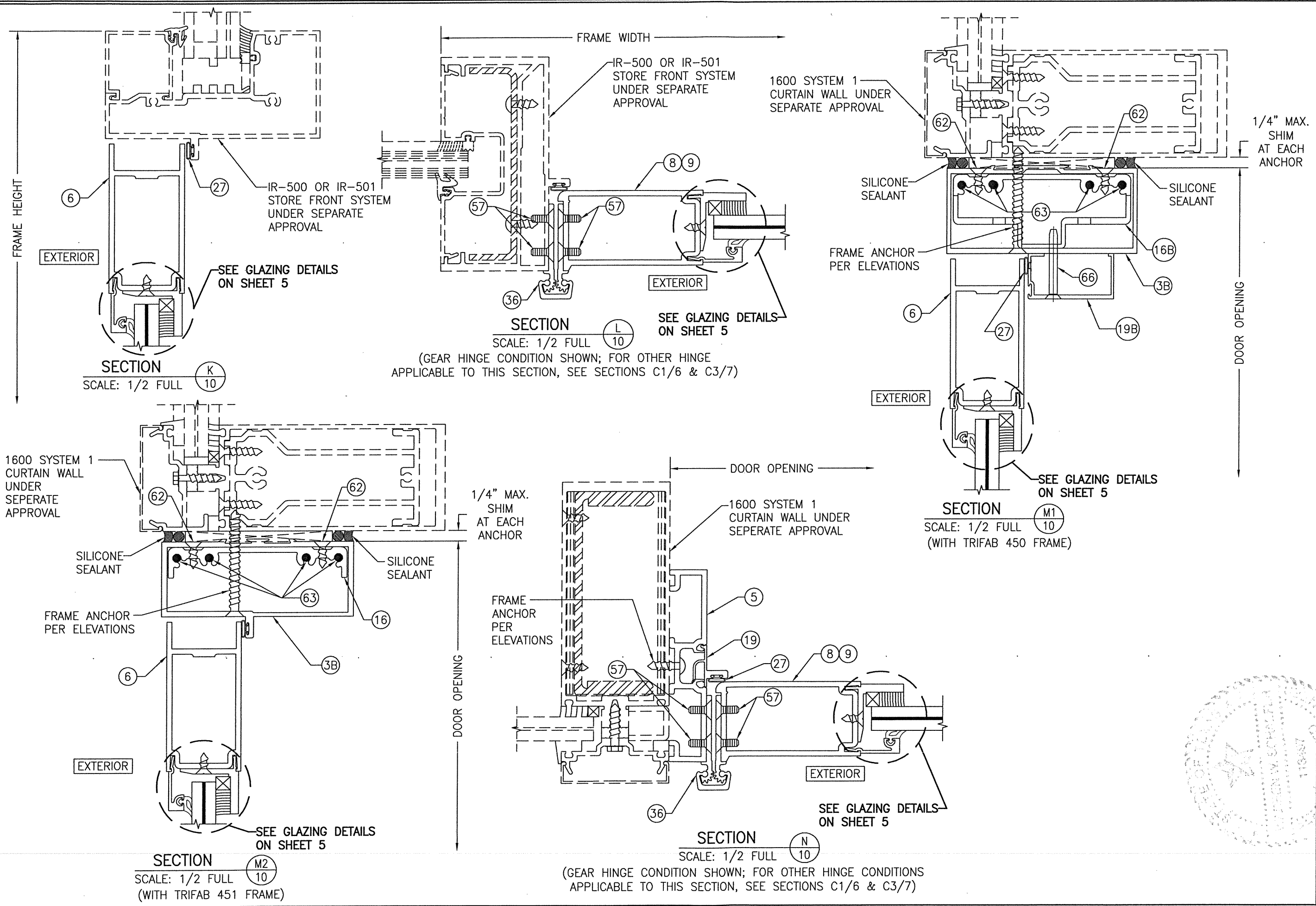
| | |
|---|---|
| DRAWN BY: W.R.M. | CHECKED BY: W.W.S. |
| PLOT: 1=24 | DATE: 08/11/14 |
| DATE | BY |
| REVISION DESCRIPTION | |
| NO. | |
| DRAWING TITLE 350/500IR OUTSWING ZONE 3 IMPACT STOREFRONT DOORS | |
| JOB INFORMATION: KAWNEER COMPANY, INC. 555 GUTHRIE COURT NORCROSS, GA 30092 770-449-5555 | |
| CONSULTANTS W. W. SCHAEFER ENGINEERING & CONSULTING, P.A. (REG. NO. F-14980) 7480 150TH COURT NORTH PALM BEACH GARDENS, FL 33418 PHONE: 561-744-3424 | |
| CERTIFICATION | WARREN W. SCHAEFER, P.E. P.E. NO. 113497 |
| DRAWING NO. 1882T | REV. A |
| SHEET NO. 7 OF 13 | |



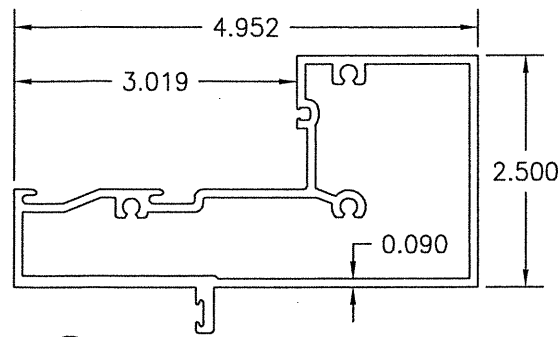


| | |
|---|---|
| DRAWN BY: W.R.M. | CHECKED BY: W.W.S. |
| PLOT: 1=24 | DATE: 08/11/14 |
| NO. | REVISION DESCRIPTION |
| BY | DATE |
| DRAWING TITLE 350/500IR OUTSWING ZONE 3 IMPACT STOREFRONT DOORS | |
| JOB INFORMATION: KAWNEER COMPANY, INC. 555 GUTHRIDGE COURT NORCROSS, GA 30092 770-449-5555 | |
| CONSULTANTS W. W. SCHAEFER ENGINEERING & CONSULTING, P.A. (REG. NO. F-14980) 7480 150TH COURT NORTH PALM BEACH GARDENS, FL 33418 PHONE: 561-744-3424 | |
| CERTIFICATION MAY 13 2014 | WARREN W. SCHAEFER, P.E. P.E. NO. 113487 |
| DRAWING NO. 1882T | REV. A |
| SHEET NO. 9 OF 13 | |

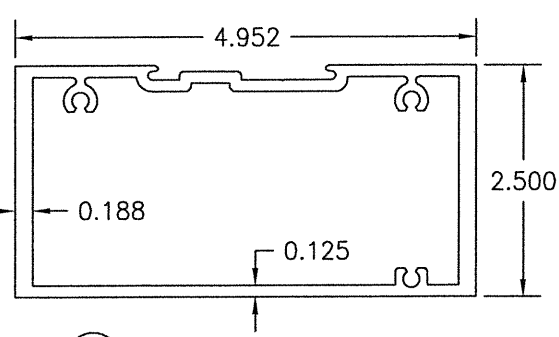




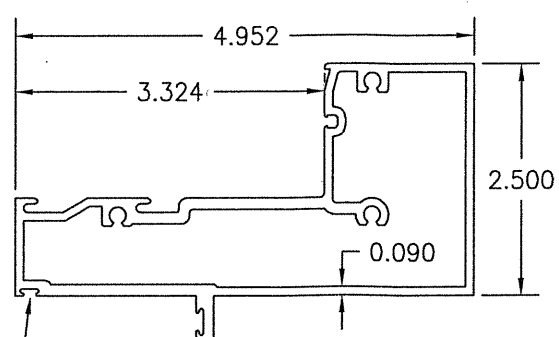
| | | | |
|---|----------------------|-----------------------|------|
| DRAWN BY: W.R.M. | | CHECKED BY: W.W.S. | |
| PLOT: 1=24 | | DATE: 08/11/14 | |
| NO. | REVISION DESCRIPTION | BY | DATE |
| | | | |
| DRAWING TITLE 350/500IR OUTSWING ZONE 3 IMPACT STOREFRONT DOORS | | | |
| JOB INFORMATION: KAWNEER COMPANY, INC. 555 GUTHRIE COURT NORCROSS, GA 30092 770-449-5555 | | | |
| CONSULTANTS W. W. SCHAEFER ENGINEERING & CONSULTING, P.A. (REG. NO. F-14980) 7480 150TH COURT NORTH PALM BEACH GARDENS, FL 33418 PHONE: 561-744-3424 | | | |
| CERTIFICATION MAY 13 2021 WARREN W. SCHAEFER, P.E. P.E. NO. 113497 | | | |
| DRAWING NO. 1882T | | REV. A | |
| SHEET NO. 10 OF 13 | | | |



①A HEAD JAMB (IR-500)

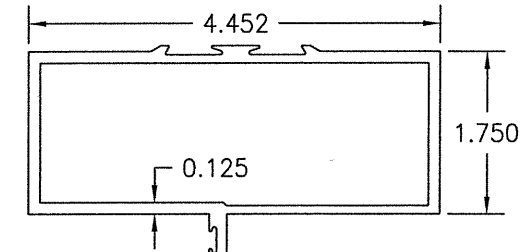


①B ALTERNATE HEAD JAMB (IR-501)

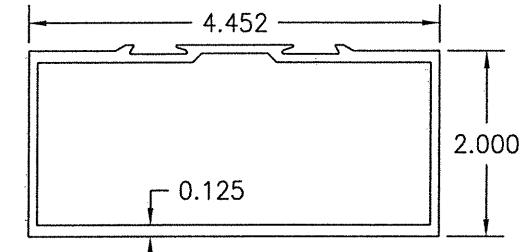


② HEAD JAMB (IR-501)

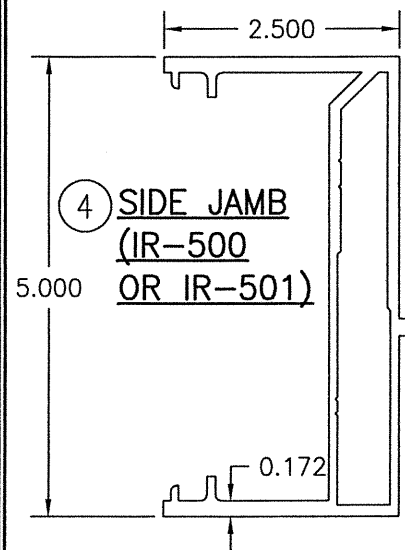
KERF ONLY REQUIRED WITH WATER RATED DOOR.



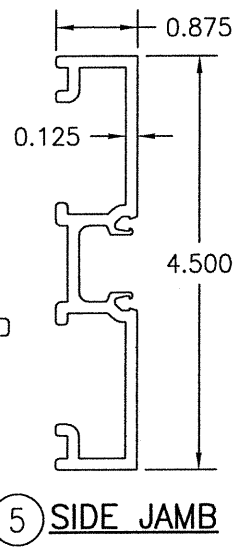
③A HEAD JAMB (TRIFAB 450)



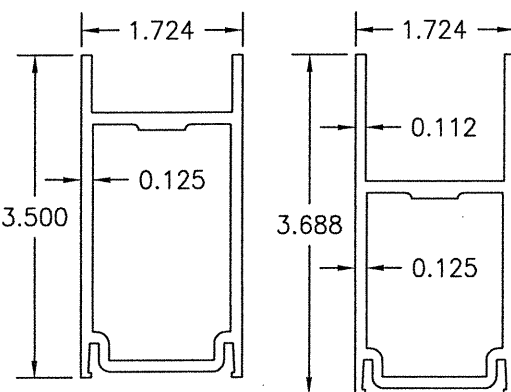
③B HEAD JAMB (TRIFAB 451)



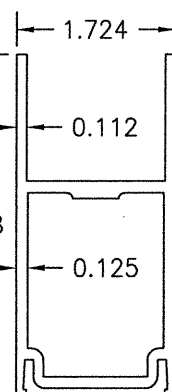
④ SIDE JAMB (IR-500 OR IR-501)



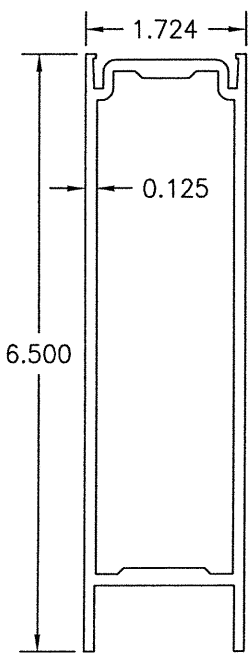
⑤ SIDE JAMB



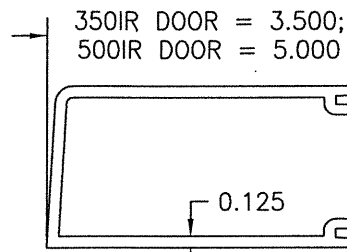
⑥A DOOR HEAD RAIL



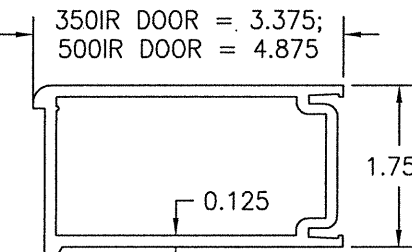
⑥B DOOR HEAD RAIL



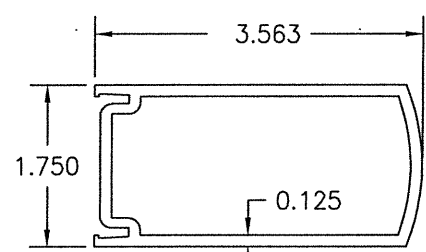
⑦ DOOR SILL RAIL



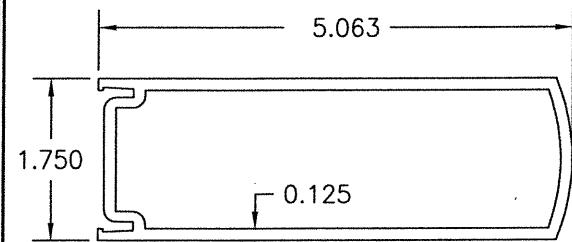
⑧ DOOR STILE (APPLICABLE WITH BUTT & PIVOT HINGES)



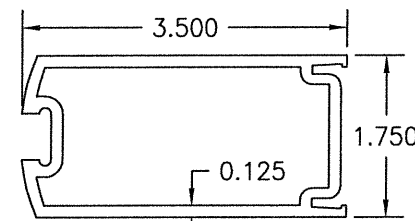
⑨ DOOR STILE (APPLICABLE WITH CONTINUOUS HINGE)



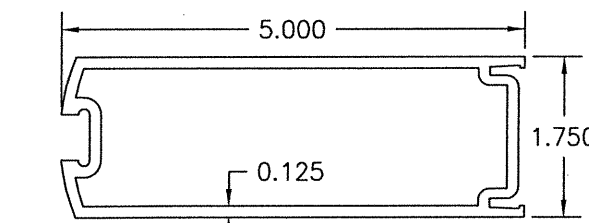
⑩A 350IR INACTIVE DOOR MEETING STILE (APPLICABLE WITH ALL LOCK/PANIC DEVICE OPTIONS WITH THE EXCEPTION OF CORBIN RUSSWIN ITEM #54 & VON DUPRIN ITEM #44)



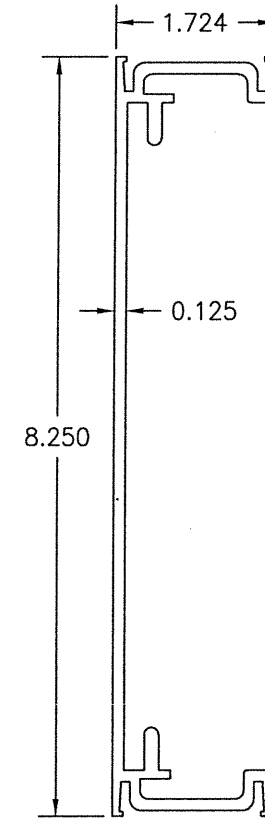
⑩B 500IR INACTIVE DOOR MEETING STILE (APPLICABLE WITH ALL LOCK/PANIC DEVICE OPTIONS)



⑩A 350IR ACTIVE DOOR MEETING STILE (APPLICABLE WITH ALL LOCK/PANIC DEVICE OPTIONS WITH THE EXCEPTION OF CORBIN RUSSWIN ITEM #54 & VON DUPRIN ITEM #44)

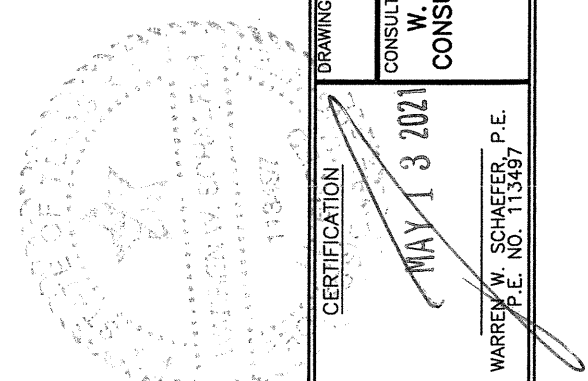


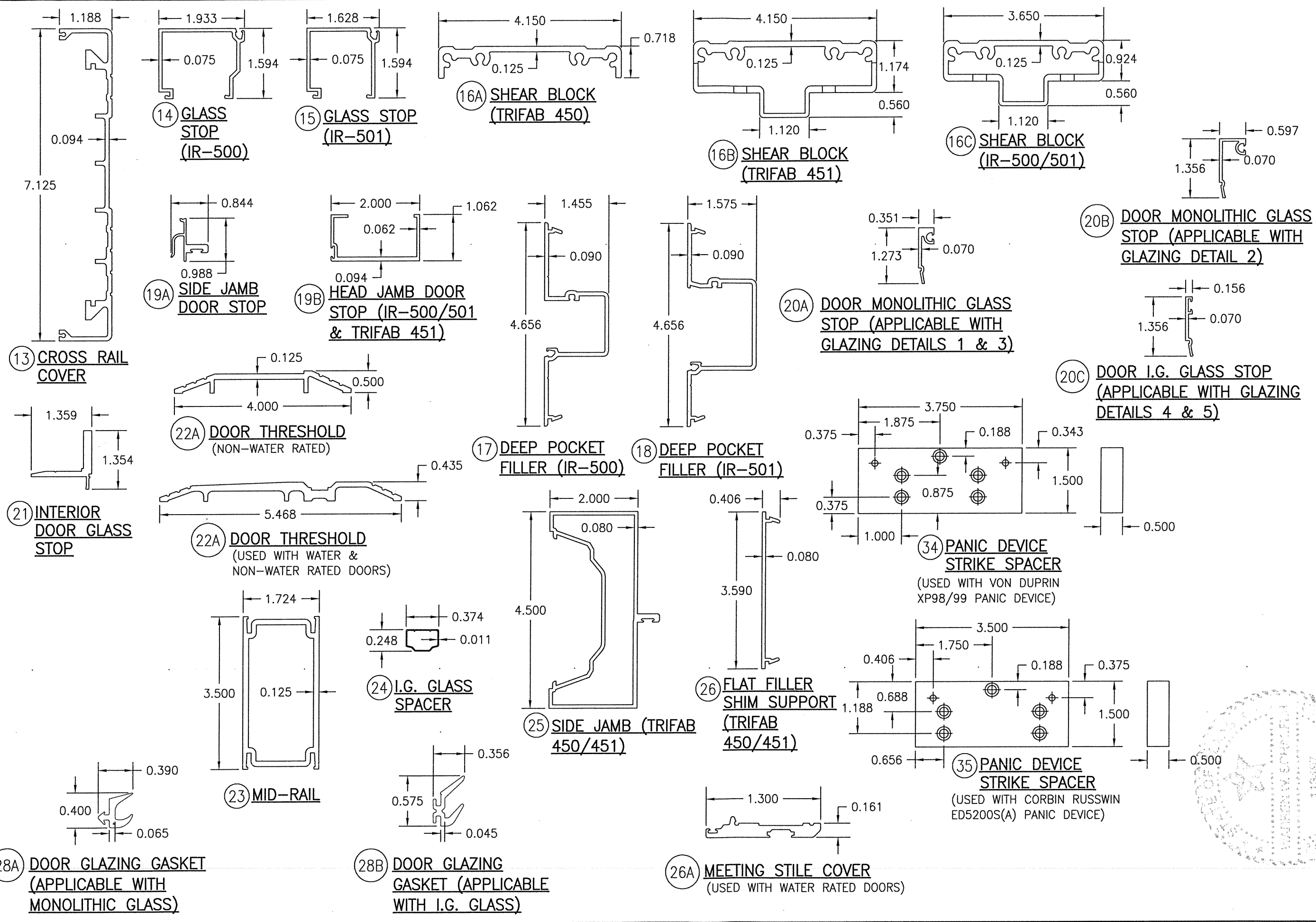
⑩B 500IR ACTIVE DOOR MEETING STILE (APPLICABLE WITH ALL LOCK/PANIC DEVICE OPTIONS)



⑩ DOOR CROSS RAIL

| | |
|--|---|
| DRAWN BY: W.R.M. | CHECKED BY: W.W.S. |
| PLOT: 1=24 | DATE: 08/11/14 |
| NO. | REVISION DESCRIPTION |
| DATE | BY |
| DRAWING TITLE 350/500IR OUTSWING ZONE 3 IMPACT STOREFRONT DOORS | |
| JOB INFORMATION: KAWNEER COMPANY, INC. 555 GUTHRIE COURT NORCROSS, GA 30092 770-449-5555 | |
| CONSULTANTS W. W. SCHAEFER ENGINEERING & CONSULTING, P.A. (REG. NO. F-14980) 7480 150TH COURT NORTH PALM BEACH GARDENS, FL 33418 PHONE: 561-744-3424 | |
| CERTIFICATION | WARREN W. SCHAEFER, P.E. P.E. NO. 113497 |
| DRAWING NO. 1882T | |
| REV. A | |
| SHEET NO. 11 OF 13 | |

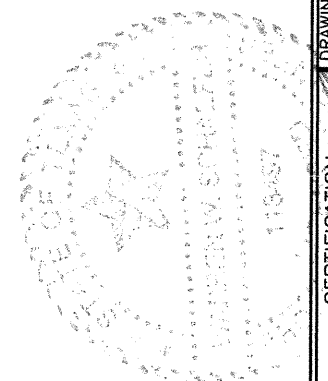




| | | | |
|---|----------------------|--------------------|------|
| DRAWN BY: W.R.M. | | CHECKED BY: W.W.S. | |
| PLOT: 1=24 | | DATE: 08/11/14 | |
| NO. | REVISION DESCRIPTION | BY | DATE |
| | | | |
| DRAWING TITLE: 350/500IR OUTSWING ZONE 3 IMPACT STOREFRONT DOORS | | | |
| JOB INFORMATION: KAWNEER COMPANY, INC. 555 GUTHRIE COURT NORCROSS, GA 30092 770-449-5555 | | | |
| CONSULTANTS: W. W. SCHAEFER ENGINEERING & CONSULTING, P.A. (REG. NO. F-14980) 7480 150TH COURT NORTH PALM BEACH GARDENS, FL 33418 PHONE: 561-744-3424 | | | |
| CERTIFICATION: MAY 13 2021 WARREN W. SCHAEFER, P.E. P.E. NO. 113497 | | | |
| DRAWING NO. 1882T | | REV. A | |
| SHEET NO. 12 OF 13 | | | |

| ITEM # | PART # | ITEM DESCRIPTION | MANUFACTURER/NOTES |
|--------------------|---------|---|--|
| PARTS | | | |
| 1A | 575-022 | HEAD JAMB (IR-500) | 6063-T6 ALUMINUM |
| 1B | 575-162 | ALTERNATE HEAD JAMB (IR-500/501) | 6063-T6 ALUMINUM |
| 2 | 575-122 | HEAD JAMB (IR-501) | 6063-T6 ALUMINUM |
| 3A | 450-502 | HEAD JAMB (TRIFAB 450) | 6063-T6 ALUMINUM |
| 3B | 451-079 | HEAD JAMB (TRIFAB 451) | 6063-T6 ALUMINUM |
| 4 | 575-051 | SIDE JAMB (IR 500-OR IR-501) | 6063-T6 ALUMINUM |
| 5 | 163-036 | SIDE JAMB (1600 DR JB ADAPTOR) | 6063-T6 ALUMINUM |
| 6A | 200-023 | DOOR; TOP RAIL | 6063-T6 ALUMINUM |
| 6B | 200-024 | DOOR; TOP RAIL | 6063-T6 ALUMINUM |
| 7 | 200-032 | DOOR; BOTTOM RAIL | 6063-T6 ALUMINUM |
| 8 | 200-005 | DOOR STILE (APPLICABLE WITH BUTT & PIVOT HINGES) | 6063-T6 ALUMINUM |
| 9 | 200-012 | DOOR STILE (APPLICABLE WITH CONTINUOUS HINGES) | 6063-T6 ALUMINUM |
| 10A | 200-007 | 350IR INACTIVE DOOR MEETING STILE (APPLICABLE WITH ALL LOCK/PANIC DEVICE OPTIONS WITH THE EXCEPTION OF CORBIN RUSSWIN ITEM #54 & VON DUPRIN ITEM #44) | 6063-T6 ALUMINUM |
| 10B | 200-010 | 500IR INACTIVE DOOR MEETING STILE (APPLICABLE WITH ALL LOCK/PANIC DEVICE OPTIONS) | 6063-T6 ALUMINUM |
| 11A | 200-006 | 350IR ACTIVE DOOR MEETING STILE (APPLICABLE WITH ALL LOCK/PANIC DEVICE OPTIONS WITH THE EXCEPTION OF CORBIN RUSSWIN ITEM #54 & VON DUPRIN ITEM #44) | 6063-T6 ALUMINUM |
| 11B | 200-009 | 500IR ACTIVE DOOR MEETING STILE (APPLICABLE WITH ALL LOCK/PANIC DEVICE OPTIONS) | 6063-T6 ALUMINUM |
| 12 | 233-013 | DOOR CROSS RAIL | 6063-T6 ALUMINUM |
| 13 | 033-105 | CROSS RAIL COVER | 6063-T6 ALUMINUM |
| 14 | 575-004 | GLASS STOP (IR-500) | 6063-T6 ALUMINUM |
| 15 | 575-104 | GLASS STOP (IR-501) | 6063-T6 ALUMINUM |
| 16A | 450-103 | SHEAR BLOCK (TRIFAB 450) | 6063-T6 ALUMINUM |
| 16B | 451-141 | SHEAR BLOCK (TRIFAB 451) | 6063-T6 ALUMINUM |
| 16C | 400-140 | SHEAR BLOCK (IR-500/501) | 6063-T6 ALUMINUM |
| 17 | 575-035 | DEEP POCKET FILLER (IR-500) | 6063-T6 ALUMINUM |
| 18 | 575-135 | DEEP POCKET FILLER (IR-501) | 6063-T6 ALUMINUM |
| 19A | 450-520 | SIDE JAMB DOOR STOP | 6063-T6 ALUMINUM |
| 19B | 041-045 | HEAD JAMB DOOR STOP (451 & 500/501) | 6063-T6 ALUMINUM |
| 20A | 575-043 | DOOR MONOLITHIC GLASS STOP (APPLICABLE WITH GLAZING DETAILS 1 & 3) | 6063-T6 ALUMINUM |
| 20B | 575-041 | DOOR MONOLITHIC GLASS STOP (APPLICABLE WITH GLAZING DETAIL 2) | 6063-T6 ALUMINUM |
| 20C | 575-040 | DOOR I.G. GLASS STOP (APPLICABLE WITH GLAZING DETAILS 4 & 5) | 6063-T6 ALUMINUM |
| 21 | 575-045 | INTERIOR DOOR GLASS STOP | 6063-T6 ALUMINUM |
| 22A | 069-139 | DOOR THRESHOLD (NON-WATER RESISTANCE RATED) | 6063-T6 ALUMINUM |
| 22B | 069-301 | DOOR THRESHOLD (WATER RESISTANCE RATED WITH DAM) | 6063-T6 ALUMINUM |
| 23 | 200-058 | MID-RAIL | 6063-T6 ALUMINUM |
| 24 | 200-058 | I.G. GLASS SPACER | 3005 OR 3105 ALUMINUM |
| 25 | 451-064 | SIDE JAMB (TRIFAB 450/451) | 6063-T6 ALUMINUM |
| 26 | 450-126 | FLAT FILLER SHIM SUPPORT (TRIFAB 450/451) | 6063-T6 ALUMINUM |
| 26A | 050-044 | C09 MEETING STILE COVER FOR WATER RATED DOOR | MATERIAL VARIES |
| SEALS AND SEALANTS | | | |
| 27 | 027-078 | DOOR BULB WEATHERING | ALCRYN |
| 27A | 027-474 | .210 PILE WEATHERSTRIP | PVC UNPLASTICIZED |
| 28A | 027-563 | DOOR GLAZING GASKET (APPLICABLE WITH MONOLITHIC GLASS) | TREMCO TR-13536E EPDM DUROMETER 70 +/-5 |
| 28B | 027-557 | DOOR GLAZING GASKET (APPLICABLE WITH I.G. GLASS) | KRP 027-557 POLYPROPYLENE & SANTOPRENE DUROMETER 65 +/-5 |
| 29 | 127-041 | GLAZING TAPE / SILICONE SPACER | SEMI-RIGID POLYURETHANE FOAM |
| 30A | 027-342 | DOOR SETTING BLOCK (APPLICABLE WITH MONOLITHIC GLASS) | NEOPRENE |
| 30B | 027-059 | DOOR SETTING BLOCK (APPLICABLE WITH I.G. GLASS) | NEOPRENE |
| 31 | 200-795 | DOOR BOTTOM RAIL WEATHER SWEEP | VARIED |

| ITEM # | PART # | ITEM DESCRIPTION | MANUFACTURER/NOTES |
|-------------------------|---------|---|--|
| 32 | 200-497 | ADJUSTABLE ASTRAGAL WEATHERING | VARIED |
| 33 | - | COMPRESSION TAPE | 3M |
| 34 | 966-632 | PANIC DEVICE STRIKE SPACER | ALUMINUM; USED W/LOCK ITEM #44 |
| 35 | 966-193 | PANIC DEVICE STRIKE SPACER | ALUMINUM; USED WITH LOCK ITEM #54 |
| HARDWARE | | | |
| 36 | 050-821 | CONTINUOUS GEAR HINGE | HAGER/ROTON, STANLEY OR ABH |
| 37 | 037-264 | BUTT HINGE | HAGER, STANLEY OR MCKINNEY |
| 38 | 050-322 | TOP OFFSET PIVOT HINGE | KAWNEER |
| | 050-331 | INTERMEDIATE OFFSET PIVOT HINGE | |
| | 050-326 | RH BOTTOM OFFSET PIVOT HINGE | |
| | 050-327 | LH BOTTOM OFFSET PIVOT HINGE | |
| 39 | - | ACTIVE DOOR LOCK ASSEMBLY | ADAMS-RITE 1850 3-POINT LOCK SYSTEM WITH KAWNEER'S CYLINDER, |
| 40 | 50-079 | INACTIVE DOOR TOP FLUSH BOLT | ADAMS-RITE 1850 FLUSH BOLT SYSTEM WITH KAWNEER'S PUSH PACKAGE |
| | 50-075 | INACTIVE DOOR BOTTOM FLUSH BOLT | |
| 41 | - | ACTIVE DOOR LOCK ASSEMBLY | ADAMS-RITE MS 1850 3-POINT LOCK SYSTEM WITH KAWNEER'S CYLINDER, THUMBTURN & PUSH PACKAGE |
| 42 | - | INACTIVE DOOR LOCK ASSEMBLY | ADAMS-RITE 2180 2-POINT LOCK SYSTEM WITH KAWNEER'S PUSH PACKAGE |
| 44 | - | RIM PANIC DEVICE WITH KEYED REMOVABLE MULLION | VON DUPRIN XP 98/99 |
| 45 | - | CONCEALED ROD EXIT/PANIC DEVICE | JACKSON 2086 |
| 46 | - | CONCEALED ROD EXIT/PANIC DEVICE | KAWNEER 1686 |
| 47 | - | CONCEALED ROD EXIT/PANIC DEVICE | SARGENT 8400 |
| 48 | - | CONCEALED ROD EXIT/PANIC DEVICE | PANELINE CR-90 |
| 49 | - | CONCEALED ROD EXIT/PANIC DEVICE | SARGENT ADB400 |
| 50 | - | CONCEALED ROD EXIT/PANIC DEVICE | VON DUPRIN HH9947 |
| 51 | - | CONCEALED ROD EXIT/PANIC DEVICE | CALIBRE 9100 |
| 52 | - | CONCEALED ROD EXIT/PANIC DEVICE | ADAMS RITE G86 |
| 53 | - | CONCEALED ROD EXIT/PANIC DEVICE | FALCON HH1690 |
| 54 | - | RIM PANIC DEVICE WITH KEYED REMOVABLE MULLION | CORBIN RUSSWIN ED5200S(A) |
| MISCELLANEOUS FASTENERS | | | |
| 55 | - | NO. 12 X 2" SCREW | 3" FROM ENDS & MAX. 11" O.C. |
| 56 | - | NO. 12-24 X 9/16" S.S. SCREW | 8 PER HINGE |
| 57 | - | NO. 12-24 X 13/32" SCREW | 2 9/16" FROM ENDS & MAX. 5 1/8" O.C. (52 MAX. PER HINGE) |
| 58 | - | 5/16"-18 X 5/8" SCREW | 2 PER TOP PIVOT HINGE |
| 59 | - | NO. 12-24 X 9/16" S.S. SCREW | 2 PER INTERMEDIATE PIVOT HINGE |
| 60 | - | 1/4-20 X 3/8" SCREW | 3 PER BOTTOM PIVOT HINGE |
| 61 | - | NO. 6 X 11/16" SCREW | 10 PER LEAF |
| 62 | - | NO. 10 X 9/16" S.S. SCREW | 2 PER CLIP |
| 63 | - | NO. 10 X 1 19/32" S.S. SCREW | 4 PER CLIP |
| 64 | - | NO. 10 X 1/2" S.S. SCREW | 3" FROM ENDS & MAX. 7 1/2" O.C. AT TOP & BOTTOM RAILS - 3" FROM ENDS & MAX. 11 1/8" O.C. AT STILES |
| 65 | - | NO. 6 X 3/4" S.S. SCREW | 1/4" FROM ENDS & MAX. 9 17/32" O.C. |
| 66 | - | NO. 10 X 1 5/8" FHTF "B" SCREW | 1" FROM ENDS & MAX. 16" O.C. |
| 67 | - | NO. 10 X 1 1/4" FHTF SCREW | 3 PER SPACER |



| | |
|---|-----------------------|
| DRAWN BY: W.R.M. | CHECKED BY: W.W.S. |
| PLOT: 1=24 | DATE: 08/11/14 |
| DATE | |
| BY | |
| REVISION DESCRIPTION | |
| NO. | |
| 350/500IR OUTSWING ZONE 3 IMPACT STOREFRONT DOORS | |
| JOB INFORMATION: KAWNEER COMPANY, INC. 555 GUTHRIDGE COURT NORCROSS, GA 30092 770-449-5555 | |
| CONSULTANTS W. W. SCHAEFER ENGINEERING & CONSULTING, P.A. (REG. NO. F-14980) 7480 150TH COURT NORTH PALM BEACH GARDENS, FL 33418 PHONE: 561-744-3424 | |
| DRAWING TITLE | |
| CERTIFICATION MAY 13 2021 WARREN W. SCHAEFER, P.E. P.E. NO. 113497 | |
| DRAWING NO. 1882T | REV. A |
| SHEET NO. 13 OF 13 | |