

REVISIONS			
REV	DESCRIPTION	DATE	APPROVED
A	ADDED STRIKE AND GLASS DETAILS	01/06/16	R.L.

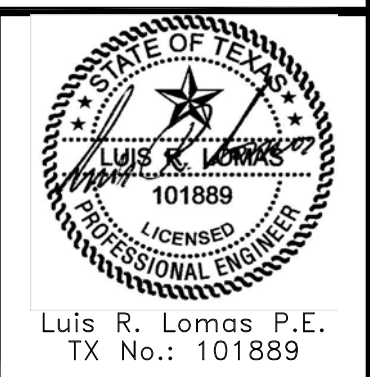
NOTES:

1. THE PRODUCT SHOWN HEREIN IS DESIGNED AND MANUFACTURED TO COMPLY WITH REQUIREMENTS OF THE 2006 IBC AND 2006 IRC WITH STATE OF TEXAS MODIFICATIONS.
2. WOOD FRAMING, METAL STRUCTURE AND MASONRY OPENING TO BE DESIGNED AND ANCHORED TO PROPERLY TRANSFER ALL LOADS TO STRUCTURE. FRAMING AND MASONRY OPENING IS THE RESPONSIBILITY OF THE ARCHITECT OR ENGINEER OF RECORD.
3. 1X BUCK OVER MASONRY/CONCRETE IS OPTIONAL. WHERE 1X BUCK IS NOT USED DISSIMILAR MATERIALS MUST BE SEPARATED WITH APPROVED COATING OR MEMBRANE. SELECTION OF COATING OR MEMBRANE IS THE RESPONSIBILITY OF THE ARCHITECT OR ENGINEER OF RECORD.
4. ALLOWABLE STRESS INCREASE OF 1/3 WAS NOT USED IN THE DESIGN OF THE PRODUCT SHOWN HEREIN. WIND LOAD DURATION FACTOR $C_d=1.6$ WAS USED FOR WOOD ANCHOR CALCULATIONS.
5. FRAME MATERIAL: COMPOSITE OR WOOD.
DOOR SKIN MATERIAL: STEEL .033" THICK (MINIMUM) AND FIBERGLASS .085" THICK (MINIMUM).
SIDELITE SKIN MATERIAL: STEEL .022" THICK (MINIMUM)
6. SIDELITES AND TRANSOM MUST BE GLAZED PER ASTM E1300-04, SEE SHEET 11 FOR GLASS DETAILS.
7. APPROVED IMPACT PROTECTIVE SYSTEM IS REQUIRED FOR THIS PRODUCT IN WIND BORNE DEBRIS REGIONS.
8. SHIM AS REQUIRED AT EACH INSTALLATION ANCHOR WITH LOAD BEARING SHIM. SHIM WHERE SPACE OF 1/16" OR GREATER OCCURS. MAXIMUM ALLOWABLE SHIM STACK TO BE 1/4".
9. FOR ANCHORING INTO WOOD FRAMING OR 2X BUCK USE #10 WOOD SCREWS WITH SUFFICIENT LENGTH TO ACHIEVE A 1 3/8" MINIMUM EMBEDMENT INTO SUBSTRATE. LOCATE ANCHORS AS SHOWN IN ELEVATIONS AND INSTALLATION DETAILS.
10. FOR ANCHORING INTO MASONRY/CONCRETE USE 3/16" TAPCONS WITH SUFFICIENT LENGTH TO ACHIEVE A 1 1/4" MINIMUM EMBEDMENT INTO SUBSTRATE WITH 2 1/2" MINIMUM EDGE DISTANCE. LOCATE ANCHORS AS SHOWN IN ELEVATIONS AND INSTALLATION DETAILS.
11. FOR ANCHORING INTO METAL STRUCTURE USE #10 SMS OR SELF DRILLING SCREWS WITH SUFFICIENT LENGTH TO ACHIEVE 3 THREADS MINIMUM BEYOND STRUCTURE INTERIOR WALL. LOCATE ANCHORS AS SHOWN IN ELEVATIONS AND INSTALLATION DETAILS.
12. ALL FASTENERS TO BE CORROSION RESISTANT.
13. INSTALLATION ANCHORS SHALL BE INSTALLED IN ACCORDANCE WITH ANCHOR MANUFACTURER'S INSTALLATION INSTRUCTIONS AND ANCHORS SHALL NOT BE USED IN SUBSTRATES WITH STRENGTHS LESS THAN THE MINIMUM STRENGTH SPECIFIED BELOW:
 - A. WOOD – MINIMUM SPECIFIC GRAVITY OF $G=0.42$
 - B. CONCRETE – MINIMUM COMPRESSIVE STRENGTH OF 3,192 PSI.
 - C. MASONRY – STRENGTH CONFORMANCE TO ASTM C-90, GRADE N, TYPE 1 (OR GREATER).
 - D. METAL STRUCTURE: STEEL 18GA, 33KSI OR ALUMINUM 6063-T5 1/8" THICK MINIMUM
14. DOOR CONSTRUCTION MAYBE CONTINUOUS HEAD FRAME AND CONTINUOUS THRESHOLD OR BOX CONSTRUCTION.

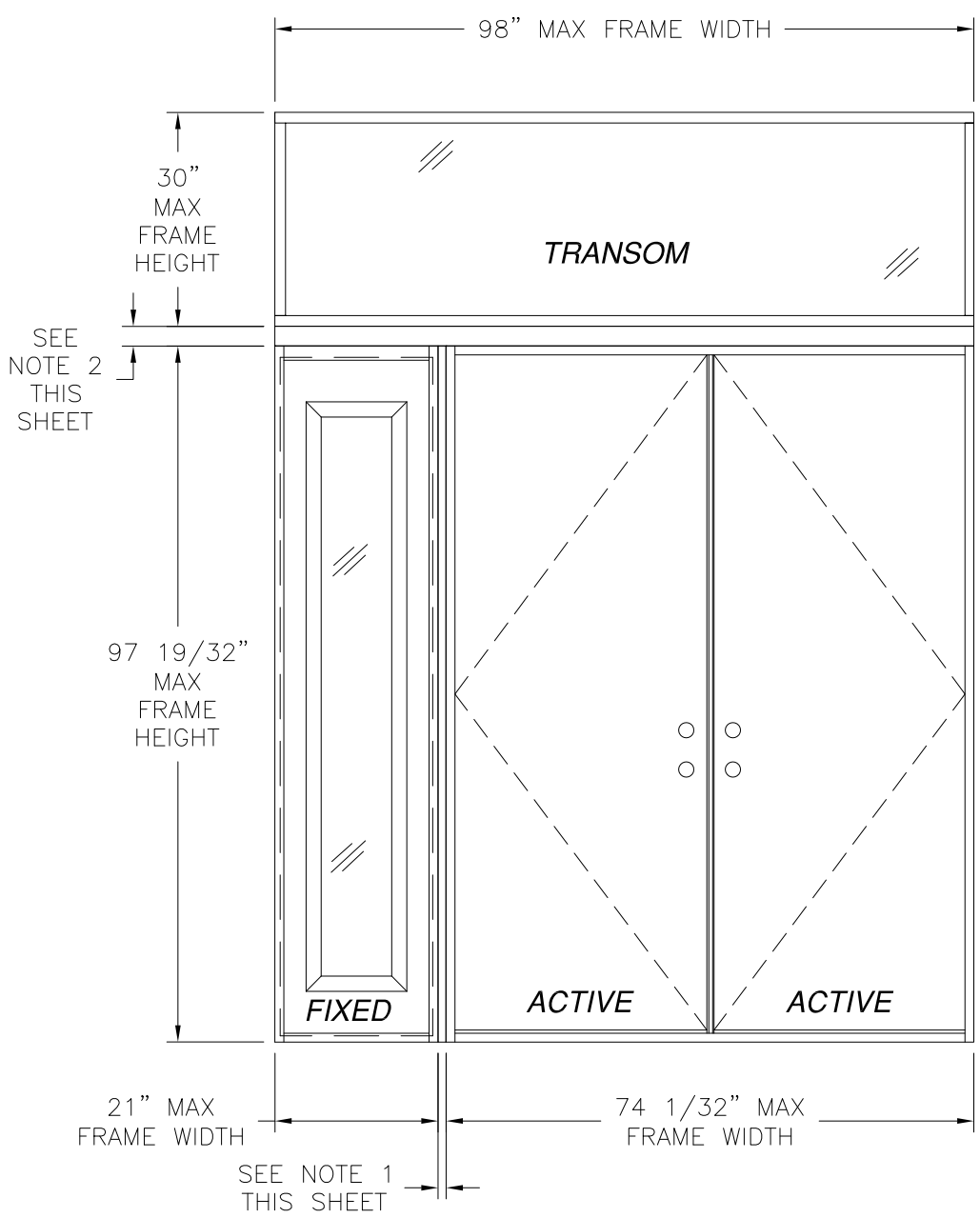
SIGNED: 01/08/2016

TABLE OF CONTENTS	
SHEET NO.	DESCRIPTION
1	NOTES
2 – 3	ELEVATIONS
4	MULLION DETAILS & COMPONENTS
5	ANCHORING LAYOUTS
6 – 8	INSTALLATION DETAILS
9 – 11	GLAZING DETAILS AND COMPONENTS

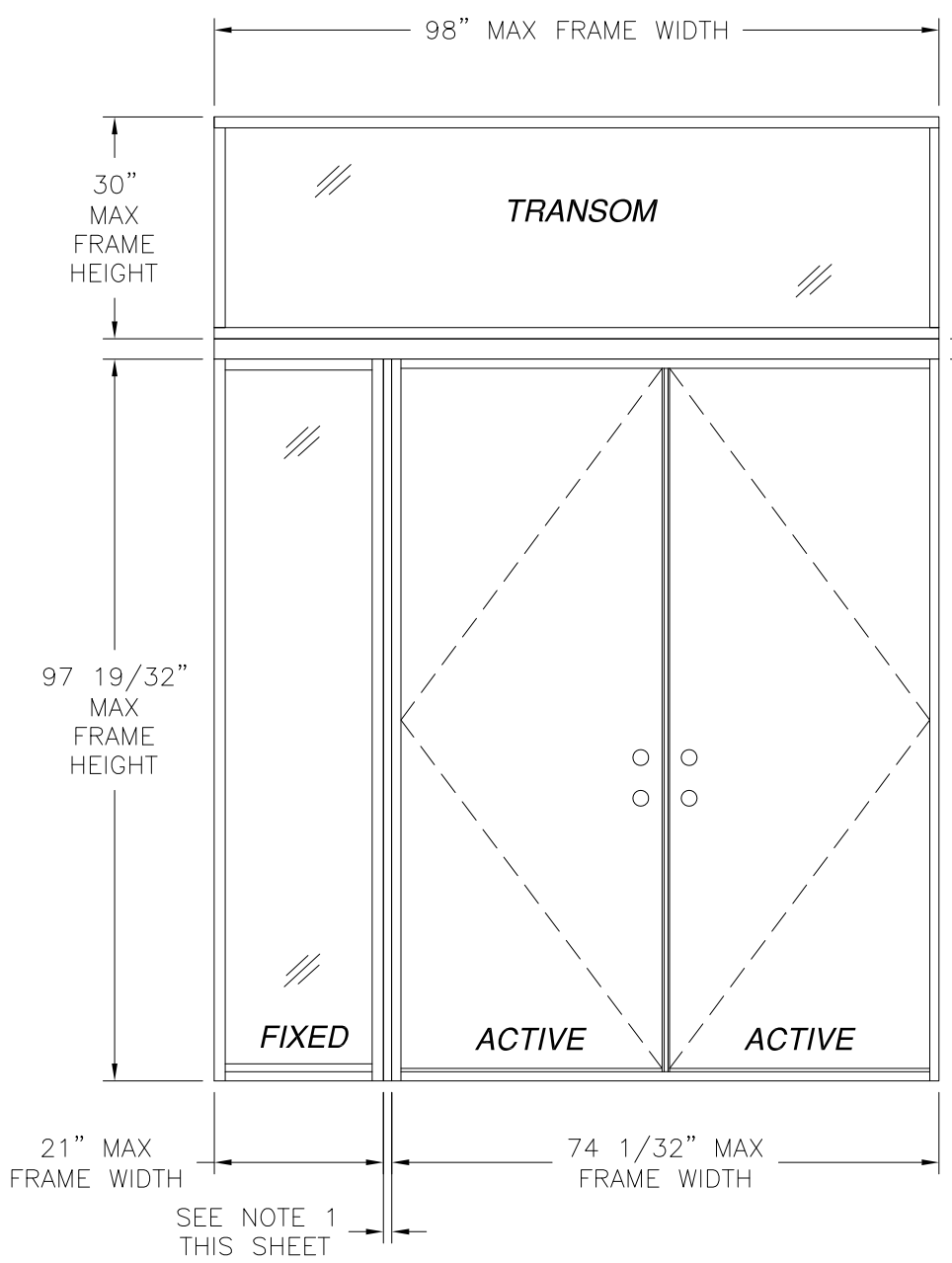
PROVIA DOOR, INC. 2150 STATE ROUTE 39 SUGARCREEK, OH 44681		
STEEL/FIBERGLASS IS OPAQUE DOUBLE DOOR NI W/SIDELITES & TRANSOM COMPOSITE/WOOD FRAME NOTES		
DRAWN: V.L.	DWG NO. 08-02409	REV A
SCALE NTS	DATE 07/21/14	SHEET 1 OF 11



REVISIONS			
REV	DESCRIPTION	DATE	APPROVED
A	ADDED STRIKE AND GLASS DETAILS	01/06/16	R.L.



DOUBLE W/ STD SIDELITE AND TRANSOM
EXTERIOR VIEW
OXX SHOWN XXO ALSO APPROVED



DOUBLE W/ DIRECT SET SIDELITE AND TRANSOM
EXTERIOR VIEW
OXX SHOWN XXO ALSO APPROVED

SEE NOTE 2 THIS SHEET

- D.L.O. NOTES:
1. MAXIMUM STD. SIDELITE D.L.O.: 8" X 78 3/8"
 2. MAXIMUM DIRECT SET SIDELITE D.L.O.: 18" X 93 3/4"
 3. MAXIMUM TRANSOM D.L.O.: 95" X 27"

DESIGN PRESSURE RATING	IMPACT RATING
±55.0PSF	NONE

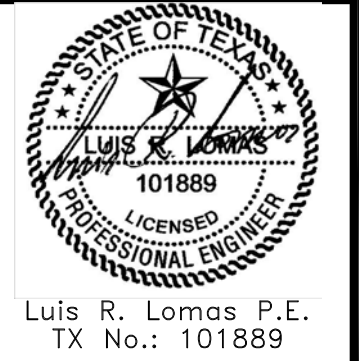
- NOTES:
1. 3/8" MULLION MINIMUM SEE DETAIL A, SHEET 4. MAXIMUM ALLOWED BUILDUP TO BE 3" AT VERTICAL MULLION. IF SIDELITE WIDTH IS 16" OR LESS NO VERTICAL MULLION IS REQUIRED.
 2. 3 1/4" MULLION MINIMUM SEE DETAIL B, SHEET 4. IF TRANSOM HEIGHT IS 16" OR LESS 2 3/4" MULLION MINIMUM IS REQUIRED.

PROVIA DOOR, INC.
2150 STATE ROUTE 39
SUGARCREEK, OH 44681

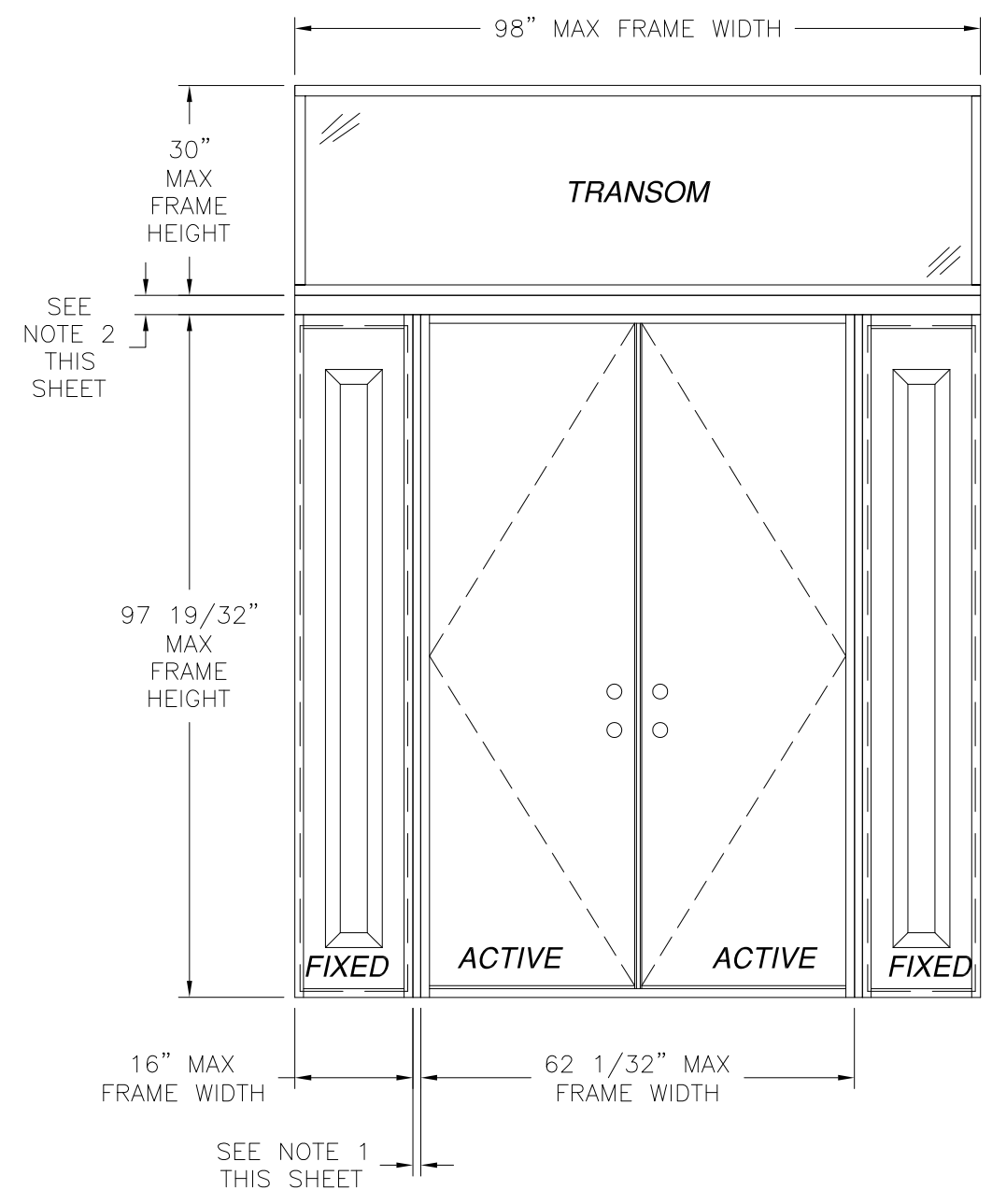
STEEL/FIBERGLASS IS OPAQUE DOUBLE DOOR NI
W/SIDELITES & TRANSOM COMPOSITE/WOOD FRAME
ELEVATIONS

DRAWN: V.L.	DWG NO. 08-02409	REV A
SCALE NTS	DATE 07/21/14	SHEET 2 OF 11

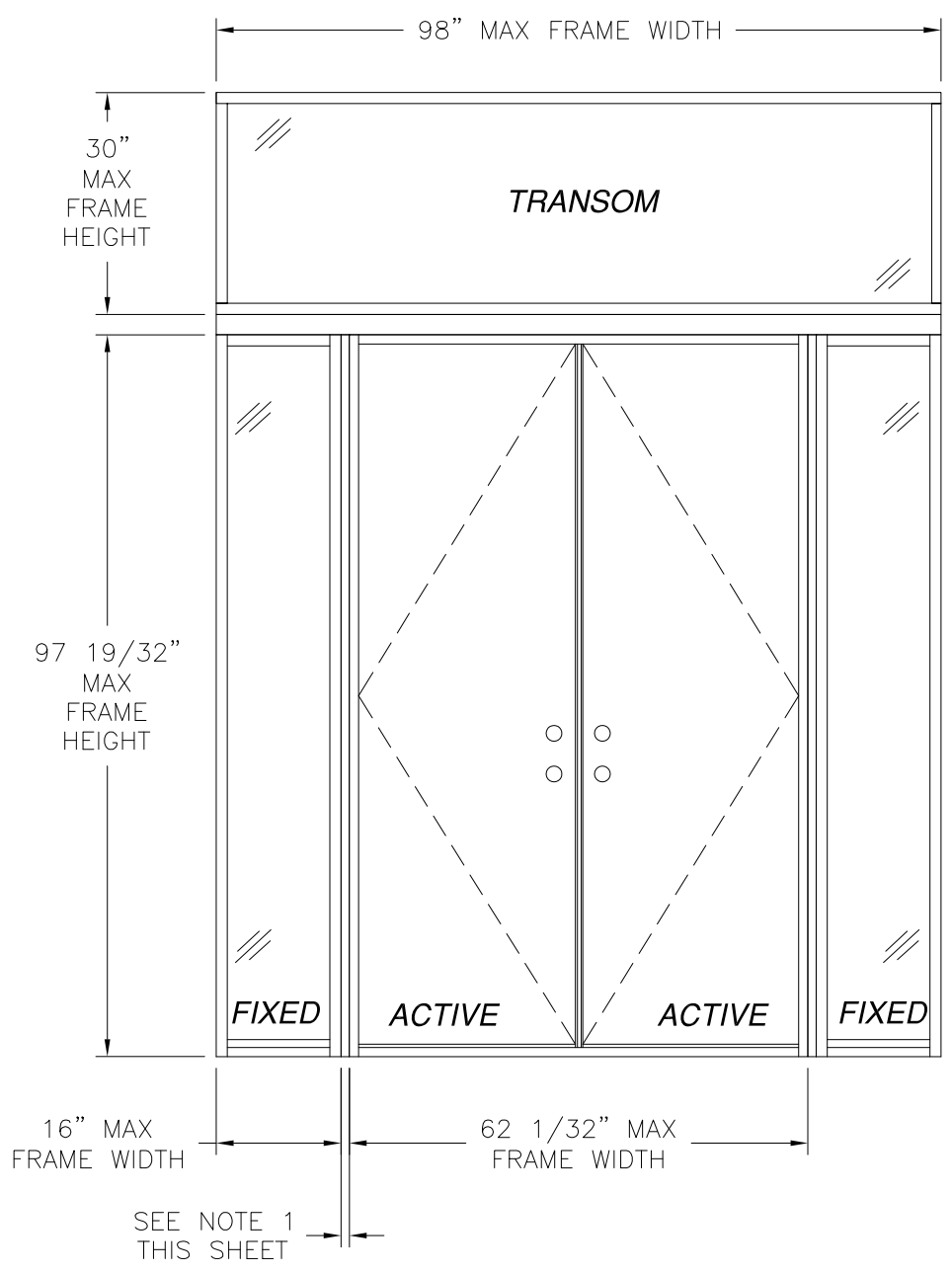
SIGNED: 01/08/2016



REVISIONS			
REV	DESCRIPTION	DATE	APPROVED
A	ADDED STRIKE AND GLASS DETAILS	01/06/16	R.L.



DOUBLE W/ STD SIDELITES AND TRANSOM
EXTERIOR VIEW



DOUBLE W/ DIRECT SET SIDELITES AND TRANSOM
EXTERIOR VIEW

DESIGN PRESSURE RATING	IMPACT RATING
±55.0PSF	NONE

- NOTES:
1. NO MULLION REQUIRED. MAXIMUM ALLOWED BUILDUP TO BE 3" AT VERTICAL MULLION.
 2. 2 1/2" MULLION MINIMUM SEE DETAIL B, SHEET 4. IF TRANSOM HEIGHT IS 16" OR LESS 2" MULLION MINIMUM IS REQUIRED.

PROVIA DOOR, INC.
2150 STATE ROUTE 39
SUGARCREEK, OH 44681

STEEL/FIBERGLASS IS OPAQUE DOUBLE DOOR NI
W/SIDELITES & TRANSOM COMPOSITE/WOOD FRAME
ELEVATIONS

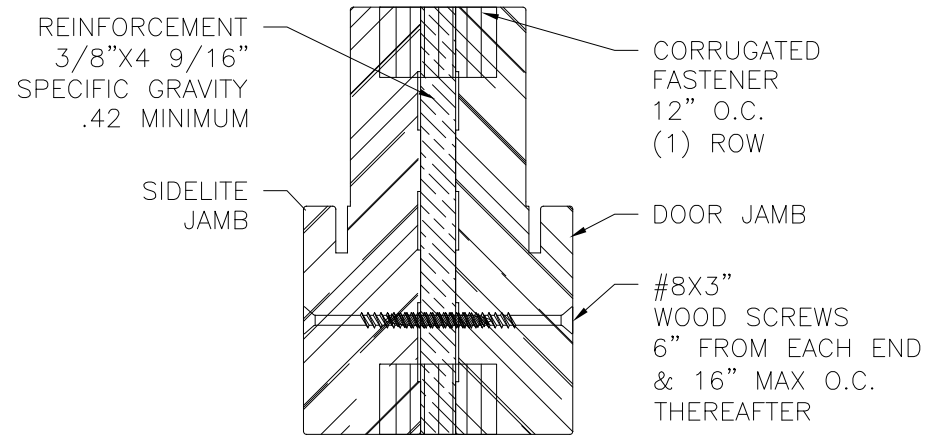
DRAWN: V.L.	DWG NO. 08-02409	REV A
SCALE NTS	DATE 07/21/14	SHEET 3 OF 11

SIGNED: 01/08/2016

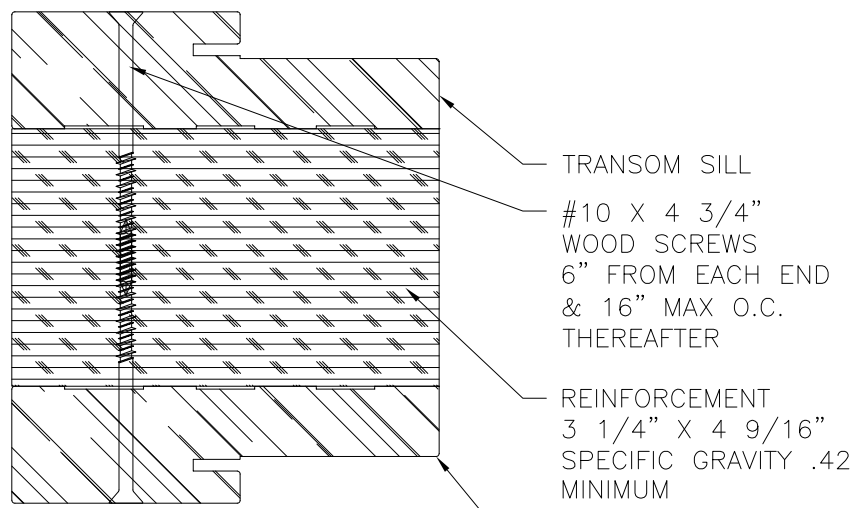


Luis R. Lomas P.E.
TX No.: 101889

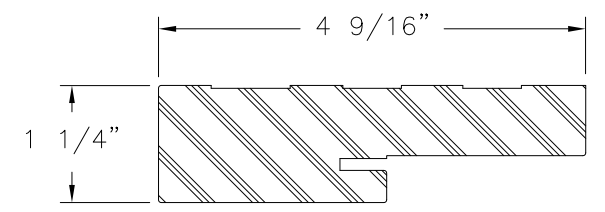
REVISIONS			
REV	DESCRIPTION	DATE	APPROVED
A	ADDED STRIKE AND GLASS DETAILS	01/06/16	R.L.



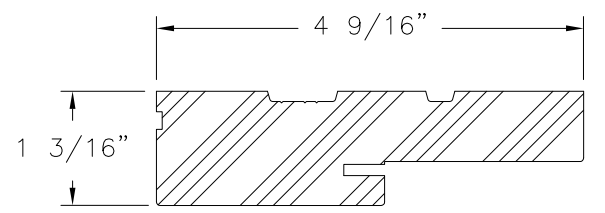
DETAIL A
VERTICAL MULLION



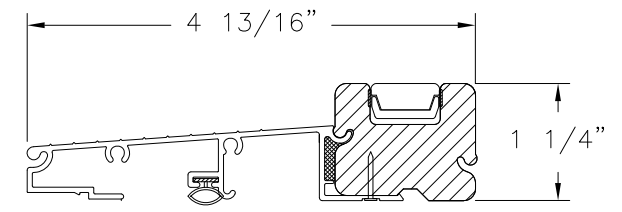
DETAIL B
HORIZONTAL MULLION



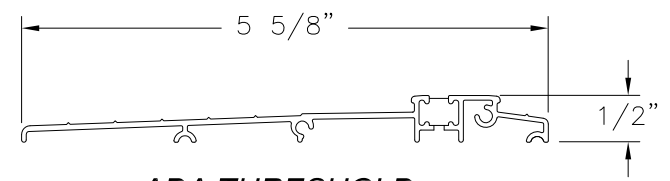
COMPOSITE FRAME PROFILE



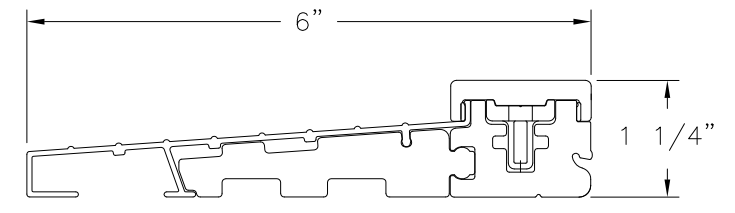
WOOD FRAME PROFILE



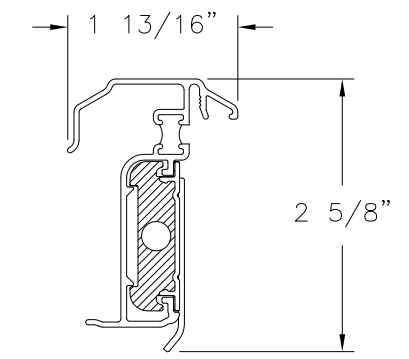
SAHARA INSWING THRESHOLD



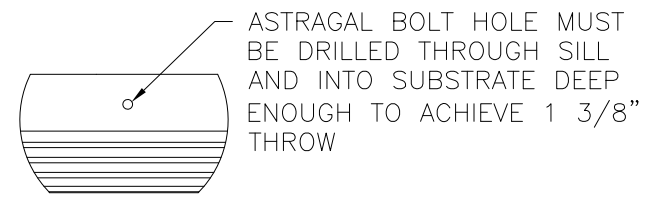
ADA THRESHOLD



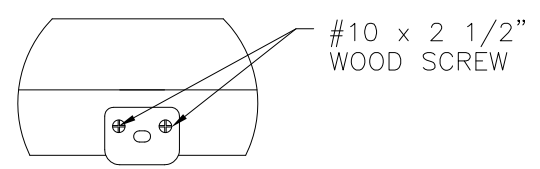
INSWING DOOR SILL DETAIL



HURRICANE ASTRAGAL DETAIL



ASTRAGAL SILL DETAIL



ASTRAGAL HEAD STRIKE DETAIL
2X BUCK/WOOD FRAMING

SIGNED: 01/08/2016

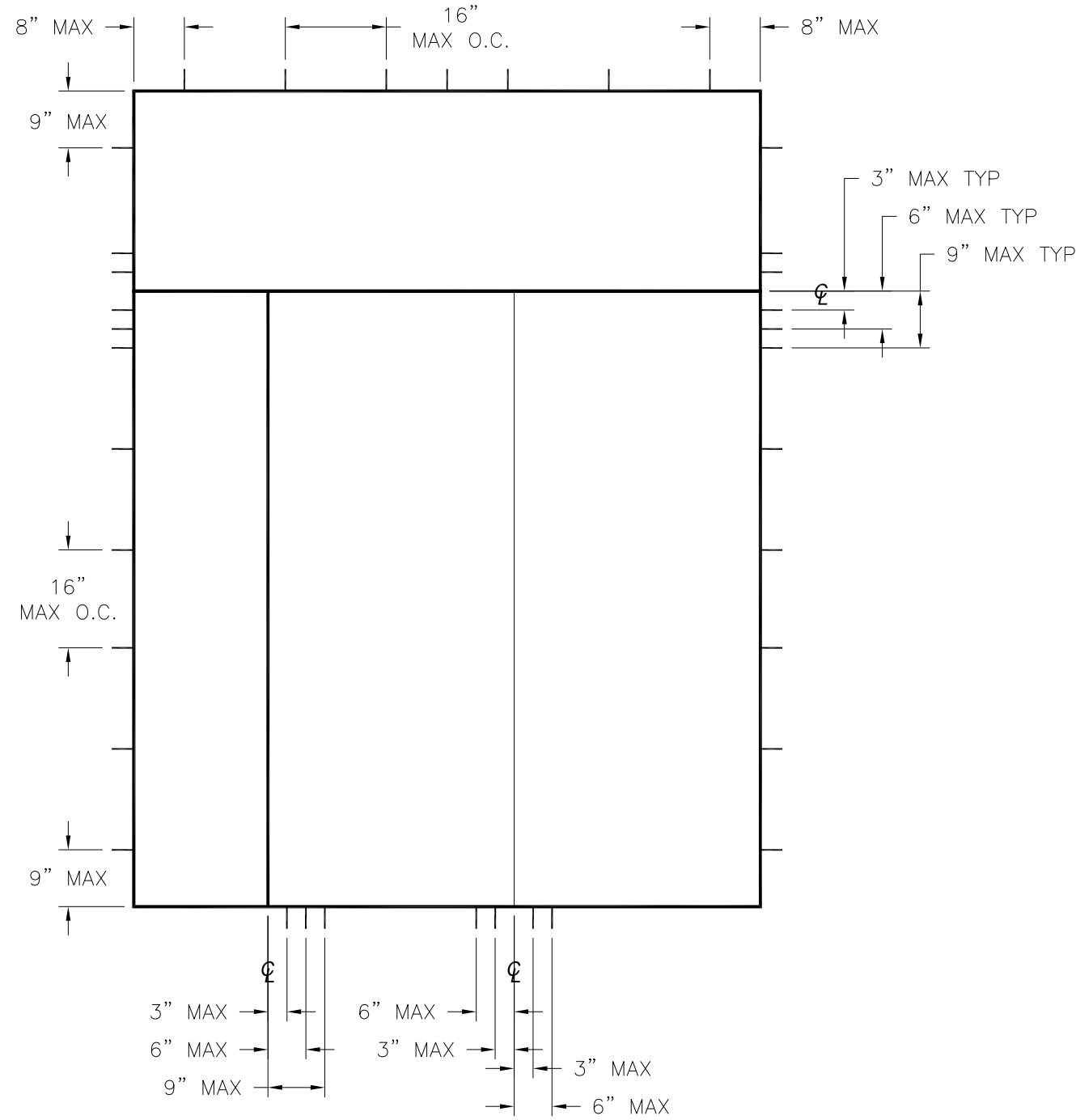
PROVIA DOOR, INC.
2150 STATE ROUTE 39
SUGARCREEK, OH 44681

STEEL/FIBERGLASS IS OPAQUE DOUBLE DOOR NI
W/SIDELITES & TRANSOM COMPOSITE/WOOD FRAME
MULLION DETAILS & COMPONENTS

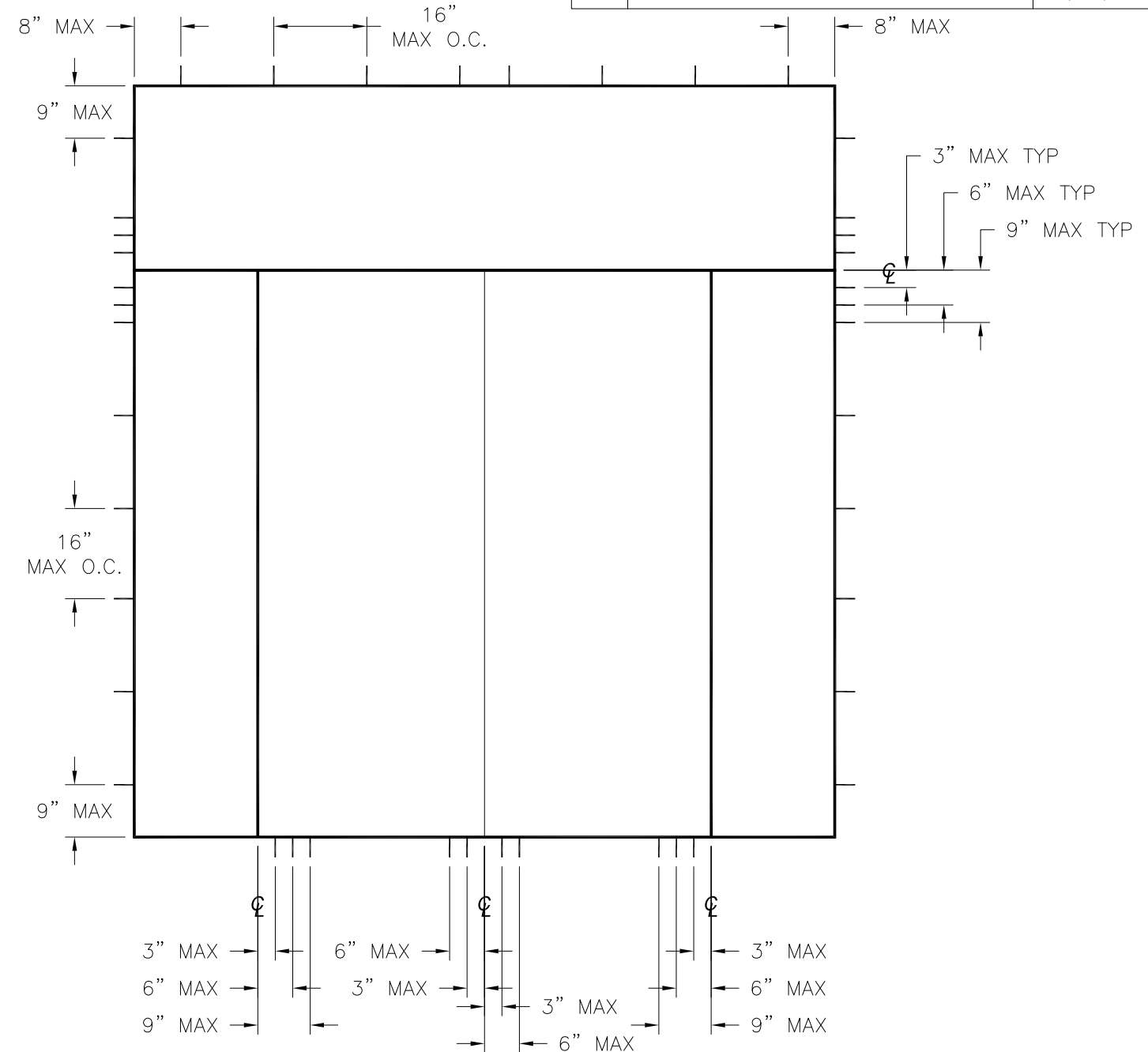
DRAWN: V.L.	DWG NO. 08-02409	REV A
SCALE NTS	DATE 07/21/14	SHEET 4 OF 11

Luis R. Lomas P.E.
TX No.: 101889

REVISIONS			
REV	DESCRIPTION	DATE	APPROVED
A	ADDED STRIKE AND GLASS DETAILS	01/06/16	R.L.



DOUBLE W/SIDELITE AND TRANSOM
ANCHORING LAYOUT



DOUBLE W/SIDELITES AND TRANSOM
ANCHORING LAYOUT

HARDWARE SCHEDULE	
A.	F-SERIES LOCK ASSEMBLY DOOR KNOB BY SCHLAGE.
B.	B-SERIES DEADBOLT ASSEMBLY BY SCHLAGE.
C.	F-SERIES DEADBOLT ASSEMBLY BY SCHLAGE.
D.	RESIDENTIAL GRADE DOOR HANDLE ASSEMBLY BY EMTEK (ALTERNATE).
E.	MULTI-POINT LOCK HANDLE ASSEMBLY BY TRILENNIUM (ALTERNATE).
F.	(3) 4" x 4" BALL BEARING HINGES BY PENROD.
G.	(3) 4" x 4" SPRING BOMMER HINGES BY PENROD. (ALTERNATE)

PROVIA DOOR, INC.
2150 STATE ROUTE 39
SUGARCREEK, OH 44681

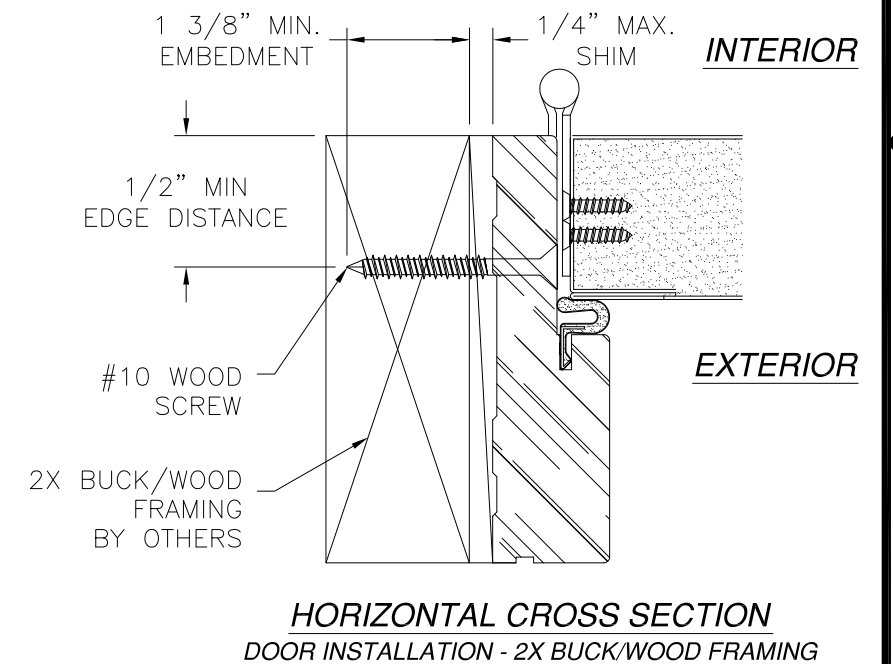
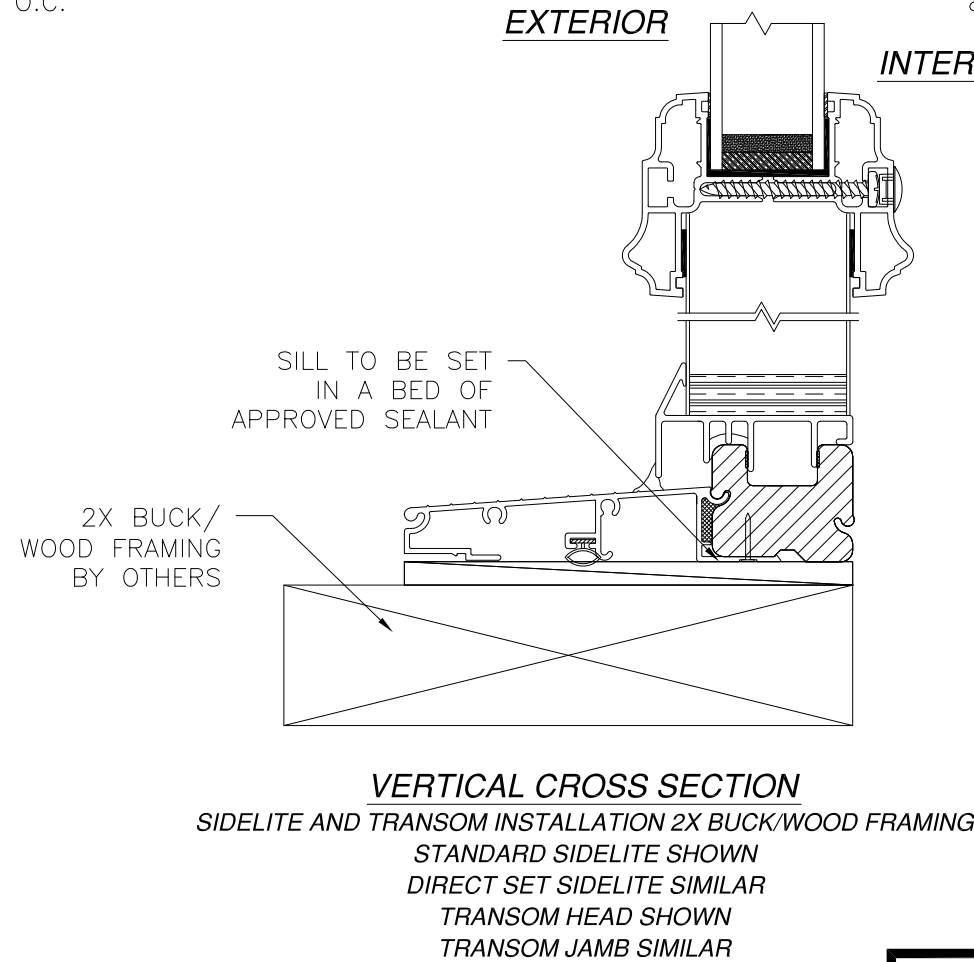
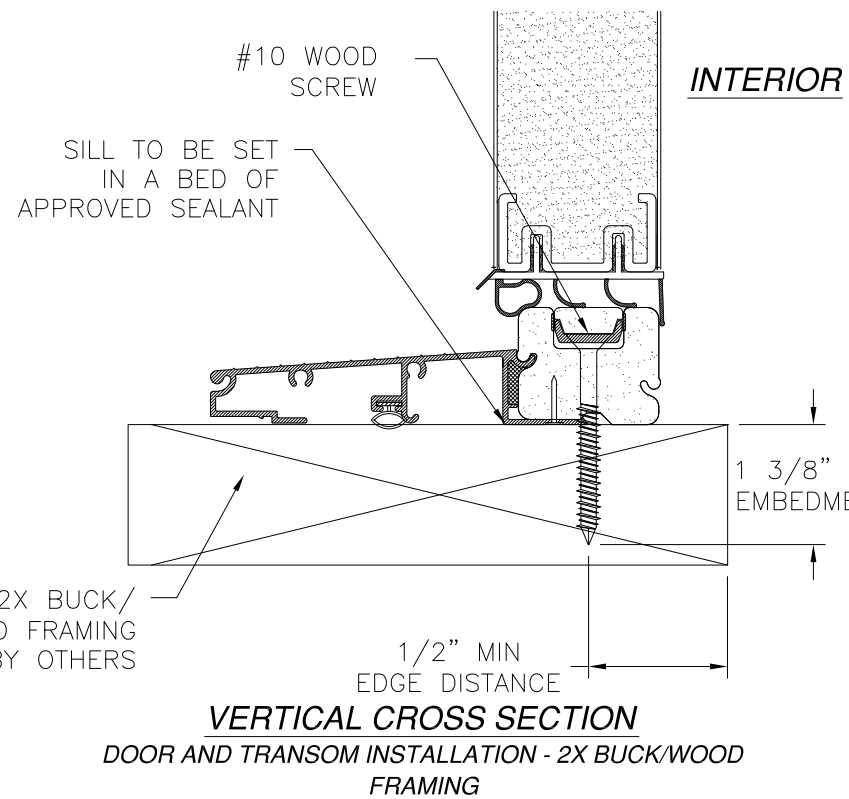
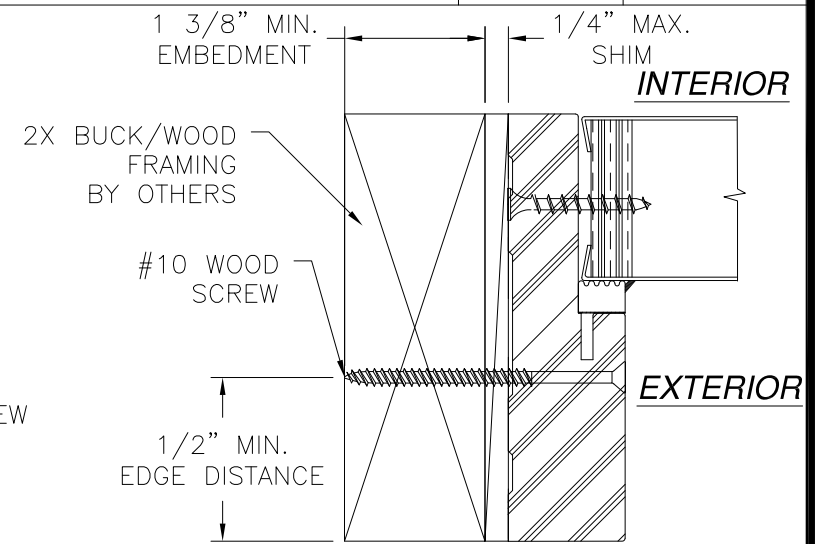
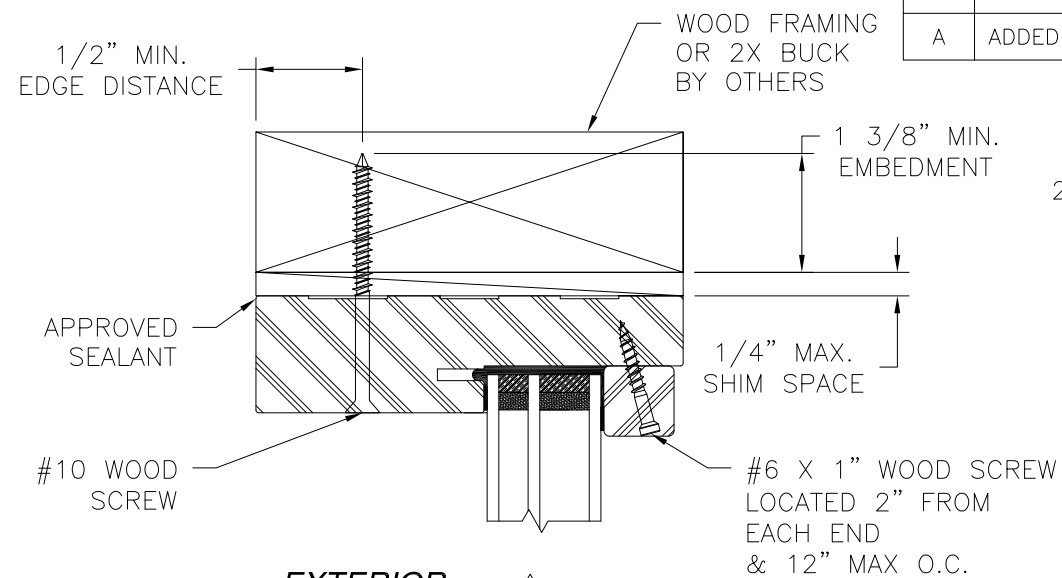
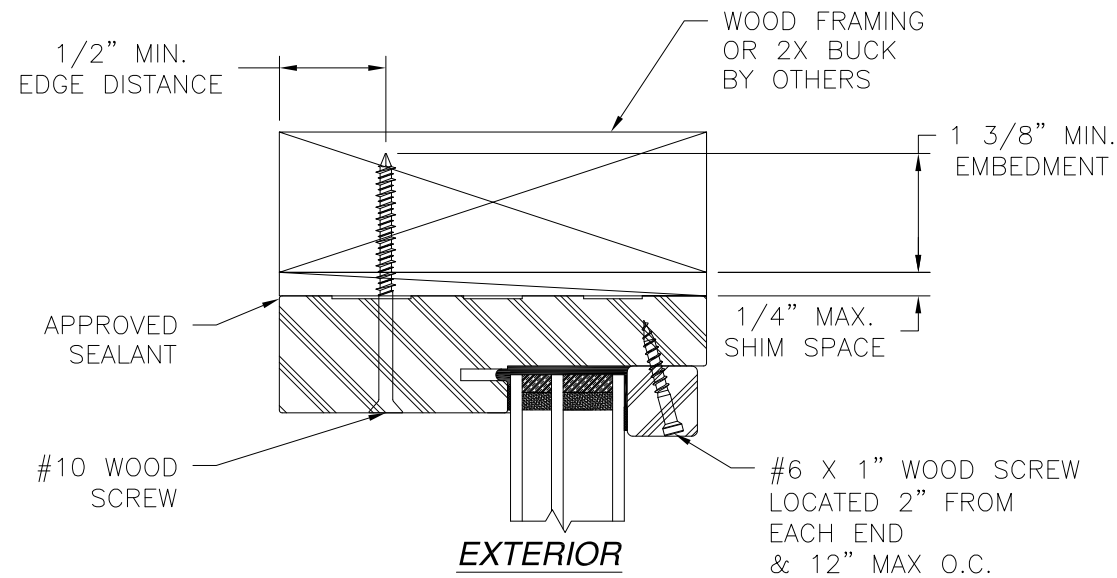
STEEL/FIBERGLASS IS OPAQUE DOUBLE DOOR NI
W/SIDELITES & TRANSOM COMPOSITE/WOOD FRAME
ANCHORING LAYOUTS

DRAWN: V.L.	DWG NO. 08-02409	REV A
SCALE NTS	DATE 07/21/14	SHEET 5 OF 11

SIGNED: 01/08/2016

Luis R. Lomas P.E.
TX No.: 101889

REVISIONS			
REV	DESCRIPTION	DATE	APPROVED
A	ADDED STRIKE AND GLASS DETAILS	01/06/16	R.L.



- NOTES:
1. INTERIOR AND EXTERIOR FINISHES, BY OTHERS, NOT SHOWN FOR CLARITY.
 2. PERIMETER AND JOINT SEALANT BY OTHERS TO BE DESIGNED IN ACCORDANCE WITH ASTM E2112

PROVIA DOOR, INC.
 2150 STATE ROUTE 39
 SUGARCREEK, OH 44681

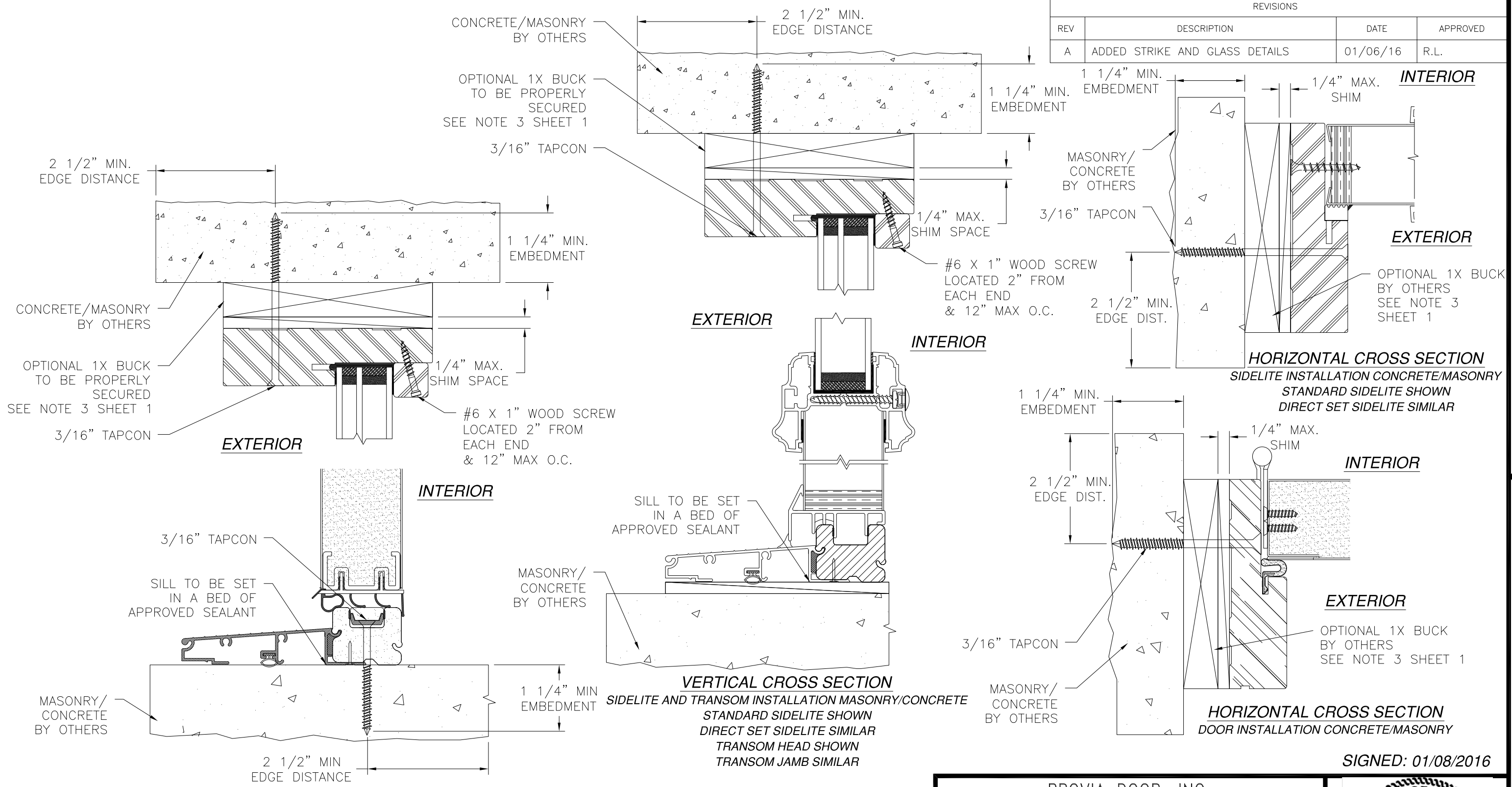
STEEL/FIBERGLASS IS OPAQUE DOUBLE DOOR NI
 W/SIDELITES & TRANSOM COMPOSITE/WOOD FRAME
 INSTALLATION DETAILS

DRAWN: V.L.	DWG NO. 08-02409	REV A
SCALE NTS	DATE 07/21/14	SHEET 6 OF 11

SIGNED: 01/08/2016

Luis R. Lomas P.E.
 TX No.: 101889

REVISIONS			
REV	DESCRIPTION	DATE	APPROVED
A	ADDED STRIKE AND GLASS DETAILS	01/06/16	R.L.



- NOTES:**
1. INTERIOR AND EXTERIOR FINISHES, BY OTHERS, NOT SHOWN FOR CLARITY.
 2. PERIMETER AND JOINT SEALANT BY OTHERS TO BE DESIGNED IN ACCORDANCE WITH ASTM E2112

PROVIA DOOR, INC.
 2150 STATE ROUTE 39
 SUGARCREEK, OH 44681

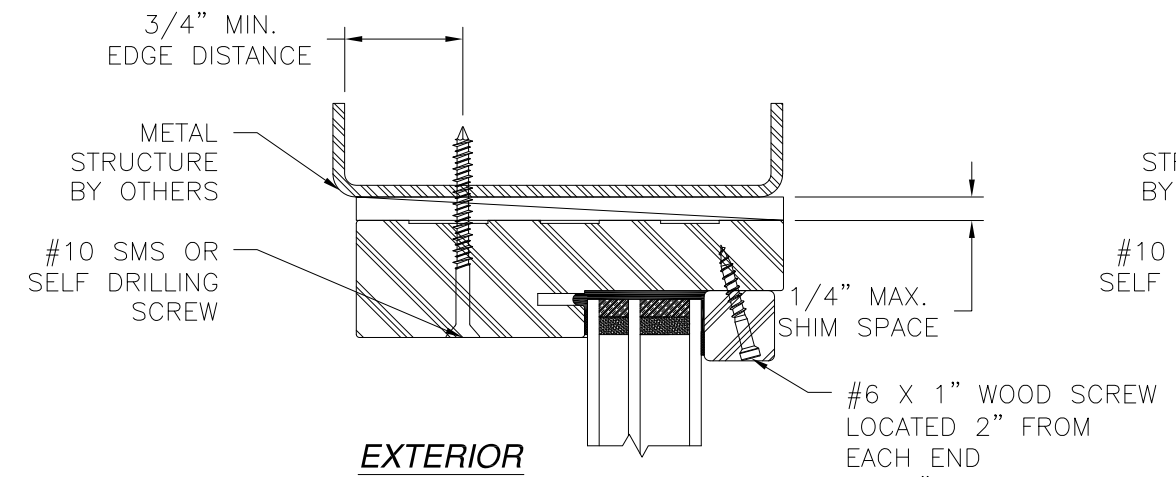
STEEL/FIBERGLASS IS OPAQUE DOUBLE DOOR NI
 W/SIDELITES & TRANSOM COMPOSITE/WOOD FRAME
 INSTALLATION DETAILS

DRAWN: V.L.	DWG NO. 08-02409	REV A
SCALE NTS	DATE 07/21/14	SHEET 7 OF 11

SIGNED: 01/08/2016

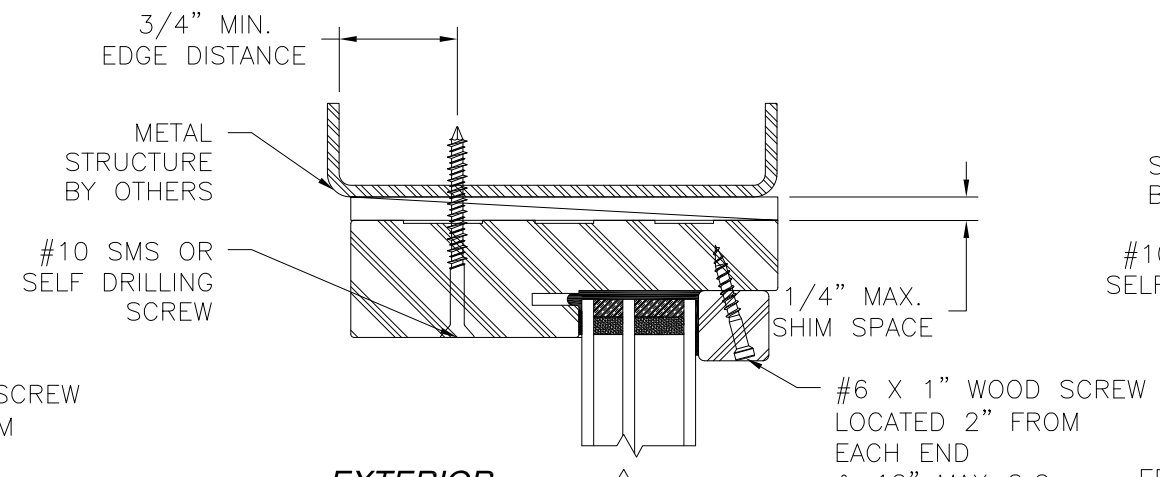
Luis R. Lomas P.E.
 TX No.: 101889

REVISIONS			
REV	DESCRIPTION	DATE	APPROVED
A	ADDED STRIKE AND GLASS DETAILS	01/06/16	R.L.



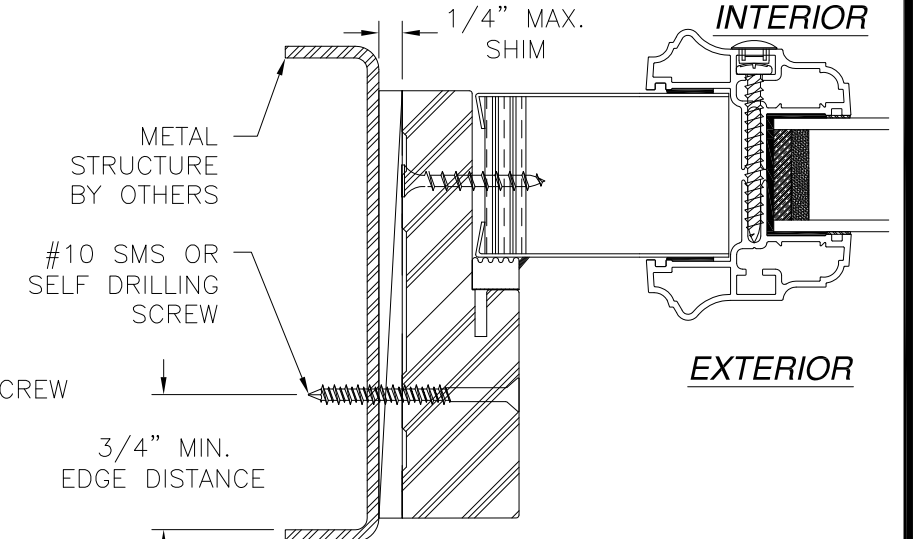
EXTERIOR

INTERIOR



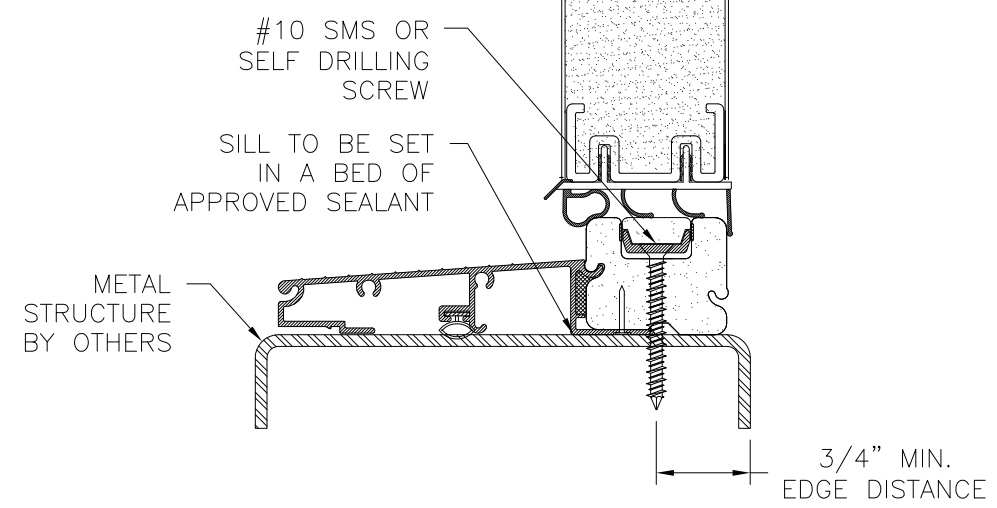
EXTERIOR

INTERIOR



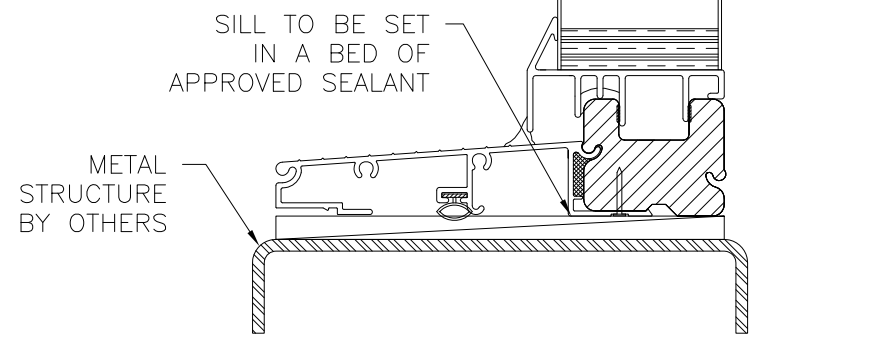
INTERIOR

EXTERIOR



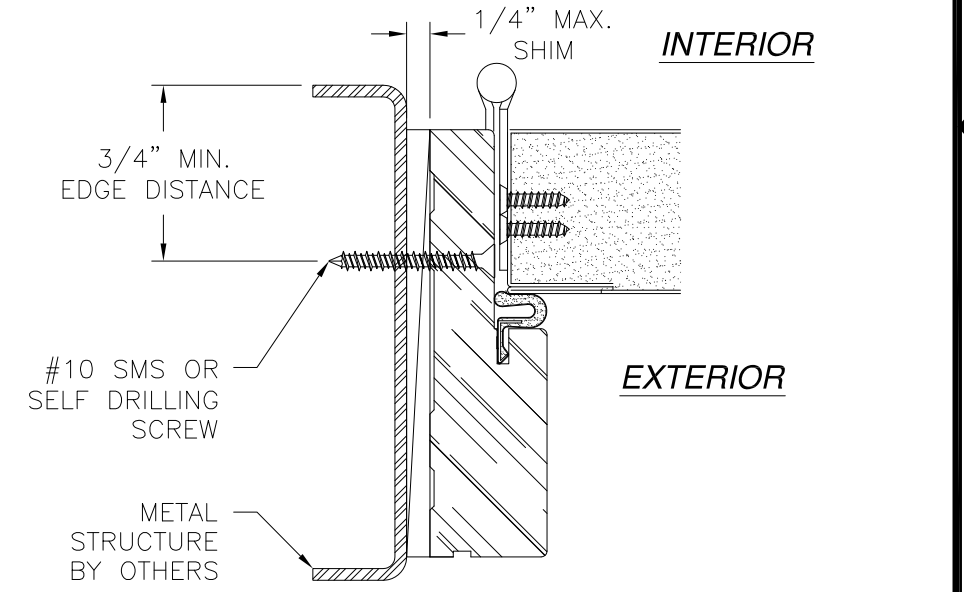
VERTICAL CROSS SECTION

DOOR AND TRANSOM INSTALLATION METAL STRUCTURE
TRANSOM HEAD SHOWN
TRANSOM JAMB SIMILAR



VERTICAL CROSS SECTION

SIDELITE AND TRANSOM INSTALLATION METAL STRUCTURE
STANDARD SIDELITE SHOWN
DIRECT SET SIDELITE SIMILAR
TRANSOM HEAD SHOWN
TRANSOM JAMB SIMILAR



INTERIOR

EXTERIOR

HORIZONTAL CROSS SECTION
DOOR INSTALLATION METAL STRUCTURE

SIGNED: 01/08/2016

- NOTES:
1. INTERIOR AND EXTERIOR FINISHES, BY OTHERS, NOT SHOWN FOR CLARITY.
 2. PERIMETER AND JOINT SEALANT BY OTHERS TO BE DESIGNED IN ACCORDANCE WITH ASTM E2112

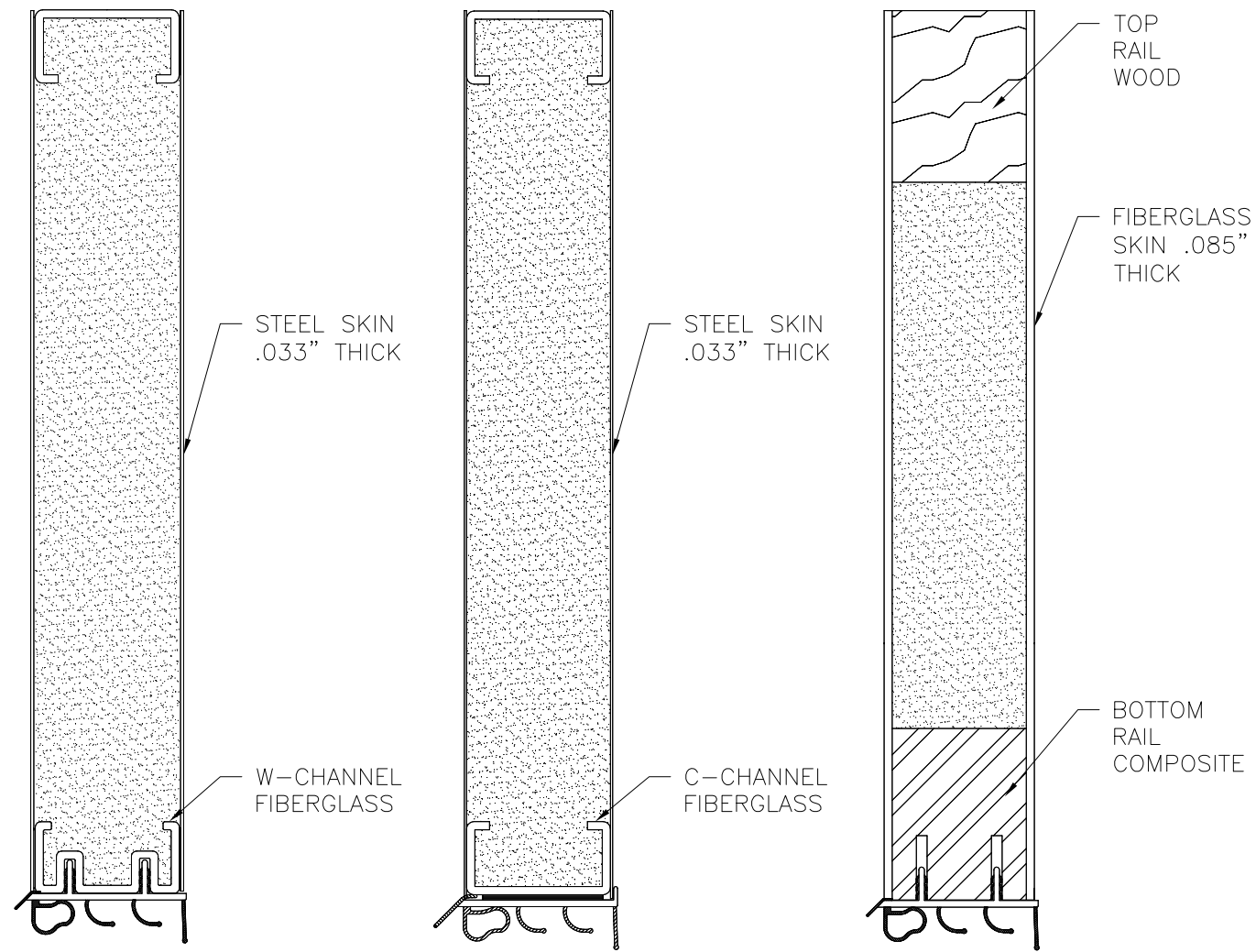
PROVIA DOOR, INC.
2150 STATE ROUTE 39
SUGARCREEK, OH 44681

STEEL/FIBERGLASS IS OPAQUE DOUBLE DOOR NI
W/SIDELITES & TRANSOM COMPOSITE/WOOD FRAME
INSTALLATION DETAILS

DRAWN: V.L.	DWG NO. 08-02409	REV A
SCALE NTS	DATE 07/21/14	SHEET 8 OF 11

Luis R. Lomas P.E.
TX No.: 101889

REVISIONS			
REV	DESCRIPTION	DATE	APPROVED
A	ADDED STRIKE AND GLASS DETAILS	01/06/16	R.L.

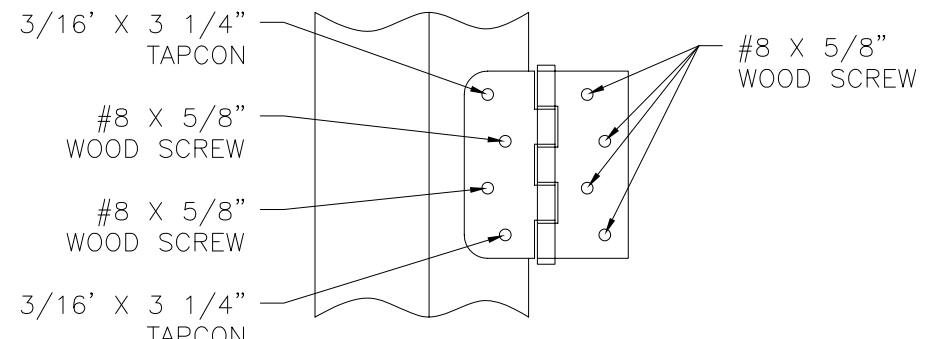


20GA STEEL

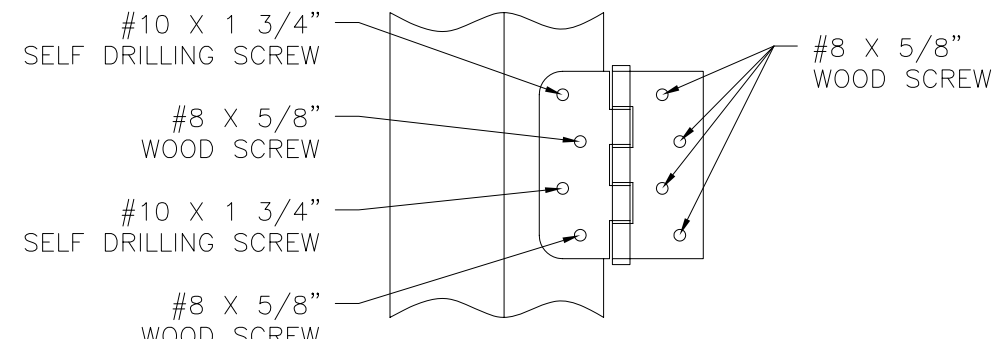
20GA STEEL

FIBERGLASS

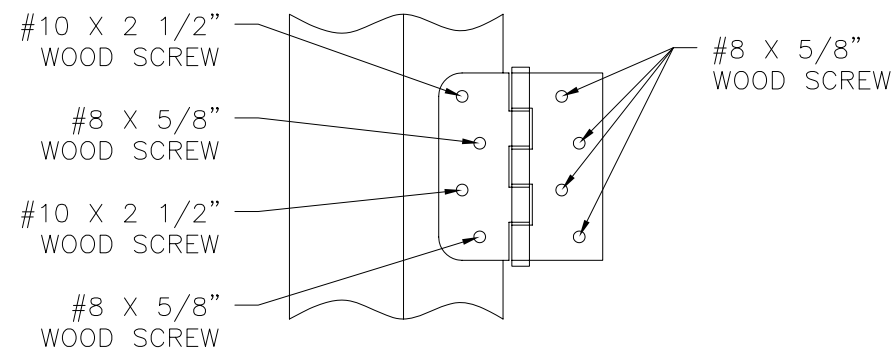
APPROVED SLABS



HINGE INSTALLATION DETAIL
MASONRY/CONCRETE



HINGE INSTALLATION DETAIL
METAL STRUCTURE



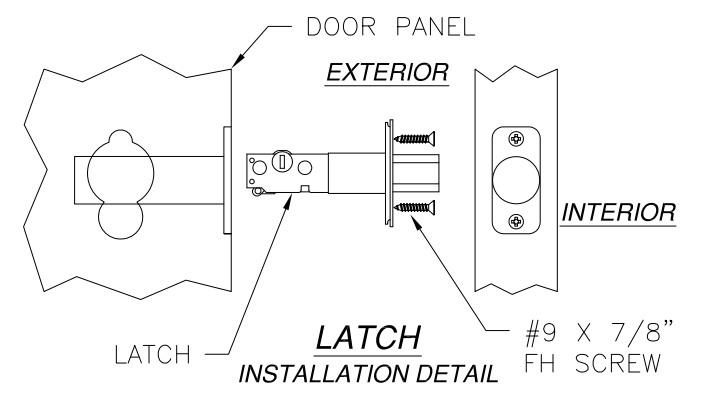
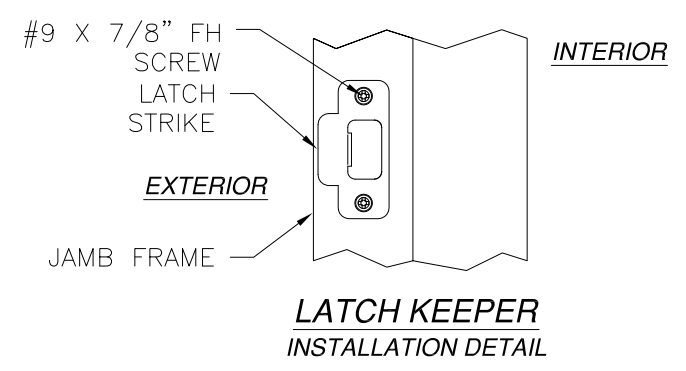
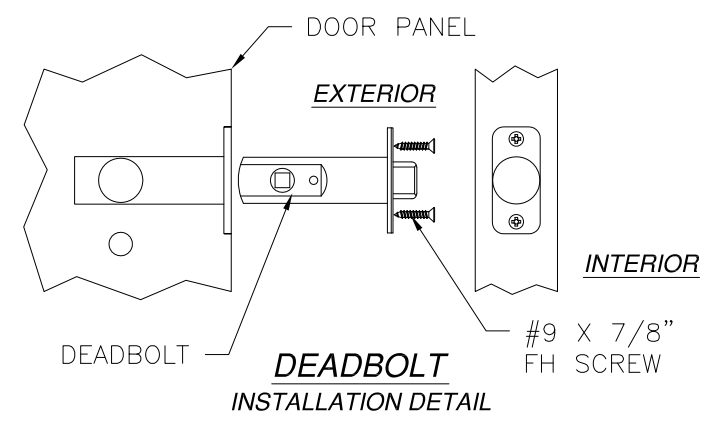
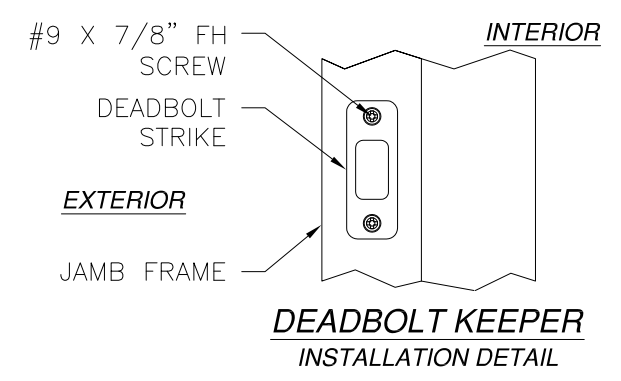
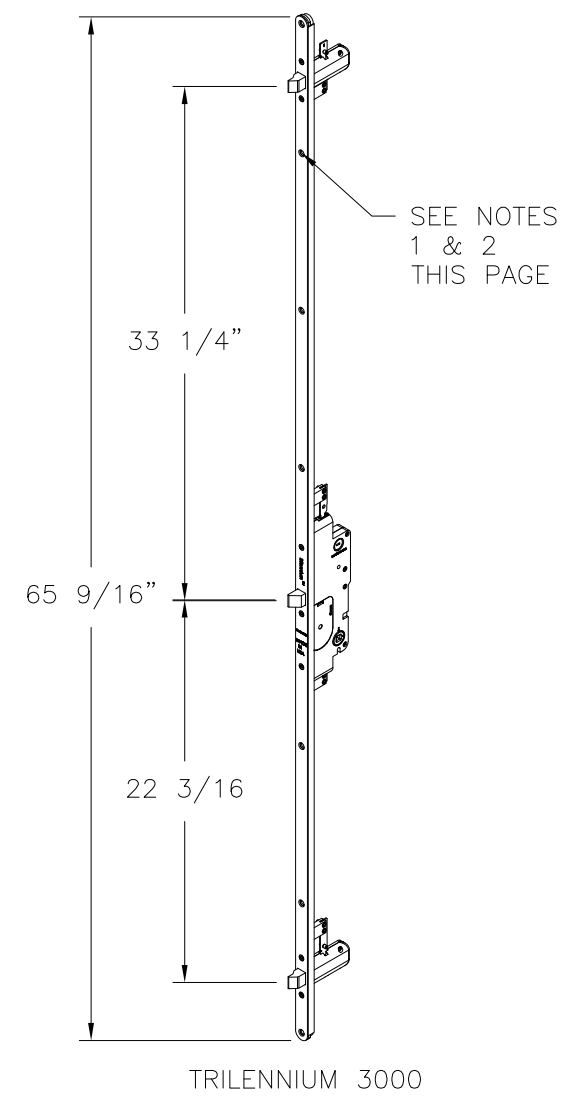
HINGE INSTALLATION DETAIL
2X BUCK/WOOD FRAMING

SIGNED: 01/08/2016

PROVIA DOOR, INC. 2150 STATE ROUTE 39 SUGARCREEK, OH 44681		
STEEL/FIBERGLASS IS OPAQUE DOUBLE DOOR NI W/SIDELITES & TRANSOM COMPOSITE/WOOD FRAME COMPONENTS		
DRAWN: V.L.	DWG NO. 08-02409	REV A
SCALE NTS	DATE 07/21/14	SHEET 9 OF 11

Luis R. Lomas P.E.
TX No.: 101889

REVISIONS			
REV	DESCRIPTION	DATE	APPROVED
A	ADDED STRIKE AND GLASS DETAILS	01/06/16	R.L.



- NOTES:
- MULTIPOINT LOCK TO BE ATTACHED TO DOOR STILE USING (7) #10 X 1" FH WOOD SCREWS LOCATED IN PRE-DRILLED HOLES.
 - MULTIPOINT LOCK STRIKE PLATES TO BE ATTACHED TO JAMBS OR DOOR PANELS USING (2) #10 X 1" FH WOOD SCREWS & (1) #10 X 2 1/2" FH WOOD SCREW AT EACH LOCK LOCATION.

PROVIA DOOR, INC.
2150 STATE ROUTE 39
SUGARCREEK, OH 44681

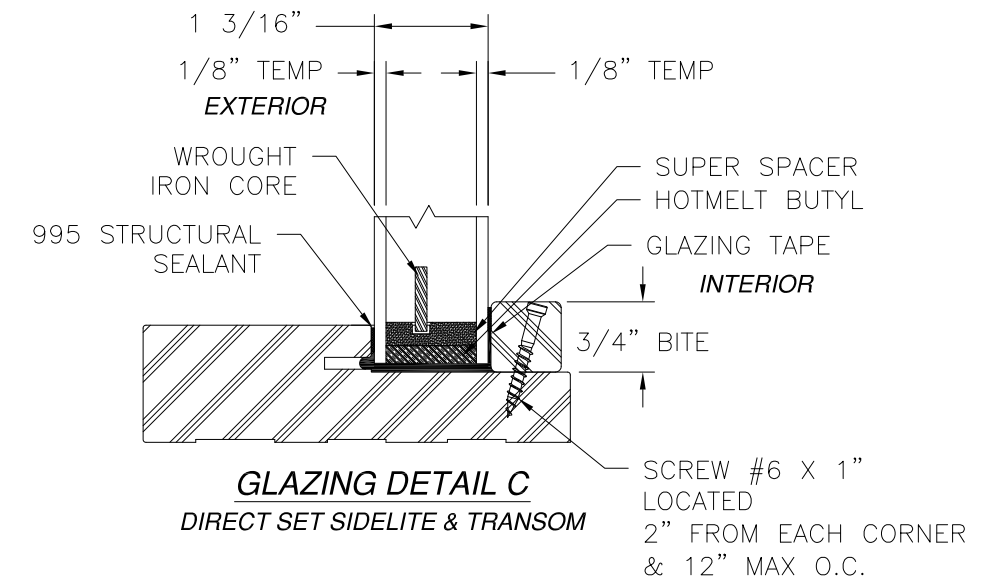
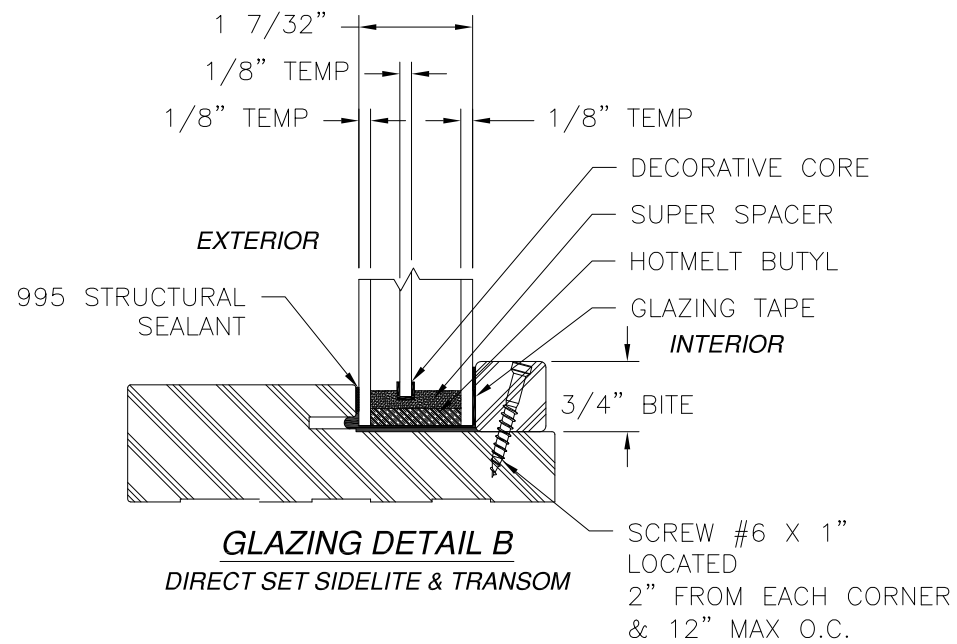
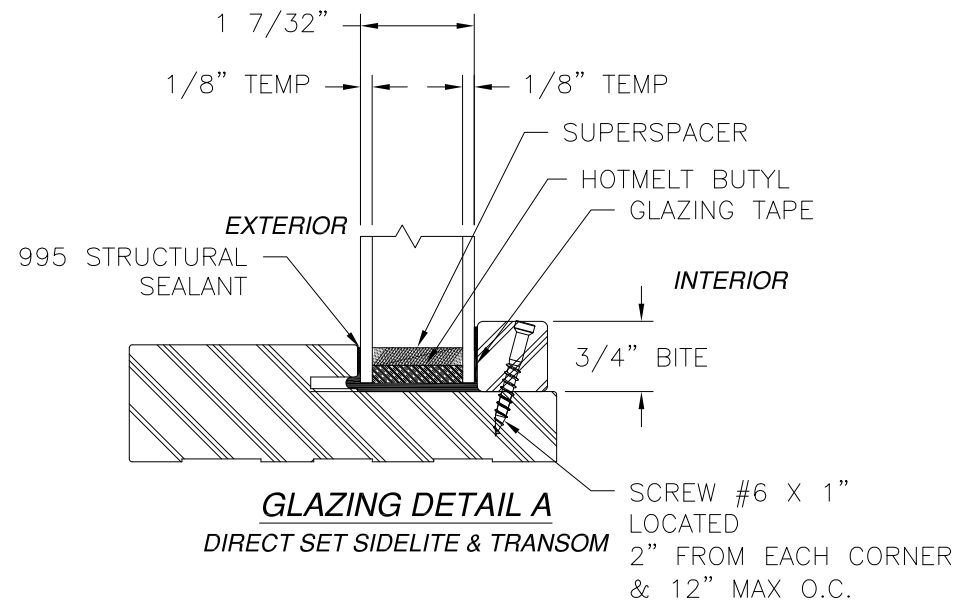
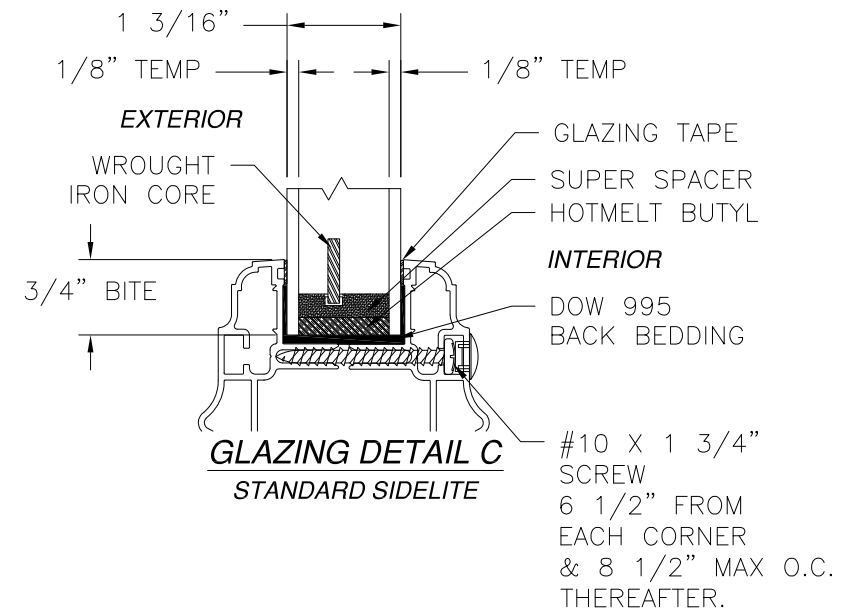
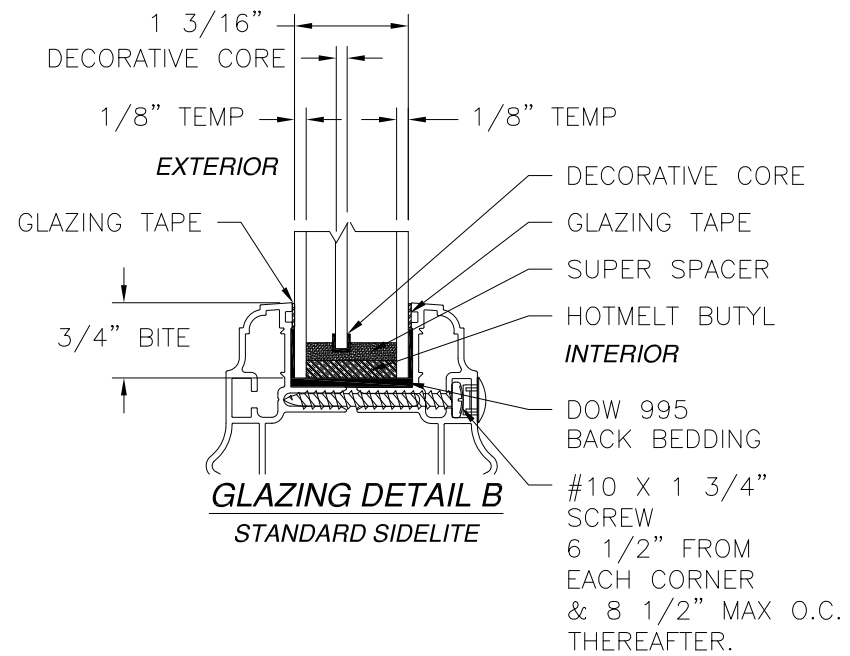
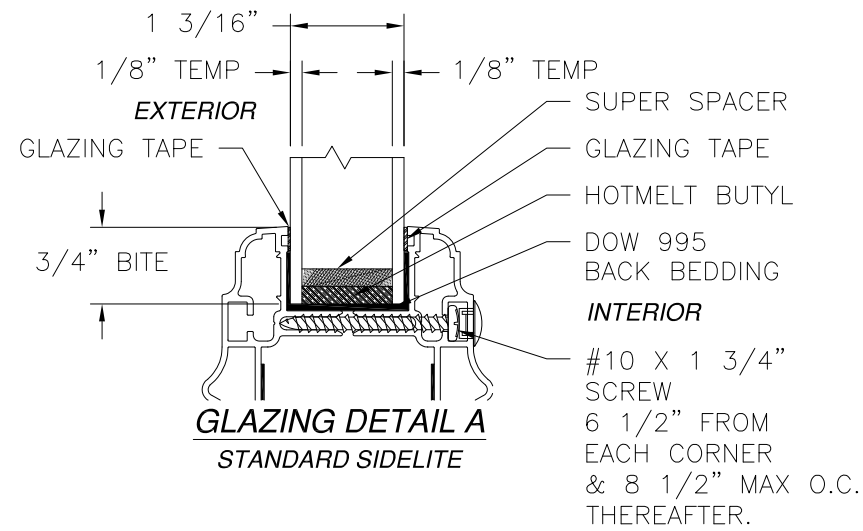
STEEL/FIBERGLASS IS OPAQUE DOUBLE DOOR NI
W/SIDELITES & TRANSOM COMPOSITE/WOOD FRAME
COMPONENTS

DRAWN: V.L.	DWG NO. 08-02409	REV A
SCALE NTS	DATE 07/21/14	SHEET 10 OF 11

SIGNED: 01/08/2016

Luis R. Lomas P.E.
TX No.: 101889

REVISIONS			
REV	DESCRIPTION	DATE	APPROVED
A	ADDED STRIKE AND GLASS DETAILS	01/06/16	R.L.



SIGNED: 01/08/2016

PROVIA DOOR, INC.
2150 STATE ROUTE 39
SUGARCREEK, OH 44681

STEEL/FIBERGLASS IS OPAQUE DOUBLE DOOR NI
W/SIDELITES & TRANSOM COMPOSITE/WOOD FRAME
COMPONENTS

DRAWN: V.L.	DWG NO. 08-02409	REV A
SCALE NTS	DATE 07/21/14	SHEET 11 OF 11



Luis R. Lomas P.E.
TX No.: 101889